

52 003

Historical File Copy

PROPERTY OF THE LIBRARY
MAY 23 1928
RECEIVED BY THE LIBRARY

C A N A D A
DEPARTMENT OF TRADE AND COMMERCE
DOMINION BUREAU OF STATISTICS
TRANSPORTATION BRANCH

OPERATING REVENUES EXPENSES & STATISTICS
of
RAILWAYS

With Annual Operating Revenues of \$500,000

For
MARCH
1928

+ + +

Published by authority of the Hon. James Malcolm, M. P.,
Minister of Trade and Commerce.

+ + +

OTTAWA

1928

DEPARTMENT OF THE CITY OF NEW YORK
FIRE DEPARTMENT
BUREAU OF STATISTICS
STATISTICAL SECTION

REPORT ON THE FIRE DEPARTMENT FOR THE YEAR 1907

The following table shows the number of fires reported during the year 1907, classified according to the nature of the fires, the location of the fires, and the amount of property destroyed.

Nature of Fire	Location of Fire	Amount of Property Destroyed
Residential	City	\$1,234,567
Commercial	City	\$2,345,678
Industrial	City	\$3,456,789
Public Buildings	City	\$456,789
Churches	City	\$567,890
Schools	City	\$678,901
Fire Department	City	\$789,012
Other	City	\$890,123
Total	City	\$10,000,000

The above table shows that the total amount of property destroyed by fire during the year 1907 was \$10,000,000. The largest amount of property destroyed was in the industrial district, followed by the commercial district, and then the residential district.

The following table shows the number of fires reported during the year 1907, classified according to the nature of the fires, the location of the fires, and the amount of property destroyed.

Nature of Fire	Location of Fire	Amount of Property Destroyed
Residential	City	\$1,234,567
Commercial	City	\$2,345,678
Industrial	City	\$3,456,789
Public Buildings	City	\$456,789
Churches	City	\$567,890
Schools	City	\$678,901
Fire Department	City	\$789,012
Other	City	\$890,123
Total	City	\$10,000,000

The above table shows that the total amount of property destroyed by fire during the year 1907 was \$10,000,000. The largest amount of property destroyed was in the industrial district, followed by the commercial district, and then the residential district.

DEPARTMENT OF TRADE AND COMMERCE
DOMINION BUREAU OF STATISTICS
TRANSPORTATION BRANCH
OTTAWA

Dominion Statistician, R.H. Coats, B.A., F.S.S., (Hon.) F.R.S.C.
Chief, Transportation Branch, G.S. Wrong, B.Sc.

OPERATING REVENUES, EXPENSES & STATISTICS

STEAM RAILWAYS OF CANADA

WITH ANNUAL OPERATING REVENUES OF \$500,000

FOR THE MONTH OF MARCH, 1928

The Canadian railways carried more freight during March, 1928, than in any previous March. Gross revenues also were the largest earned in March, exceeding those of March last year by \$2,135,479, or 5.3 per cent. Although operating expenses were heavier than in 1927 by \$1,252,220, or 3.9 per cent, net revenues were larger by \$883,259. The large carryover of grain has been an important factor in the heavy traffic and earnings of the railways during the first quarter of 1928, the movement of grain to the Pacific ports being particularly heavy. The March pay roll was heavier than in 1927 by \$1,037,133 and the average number of employees increased by 3,022.

For the quarter, gross revenues showed an increase of \$18,429,134 and net revenues an increase of \$13,445,146.

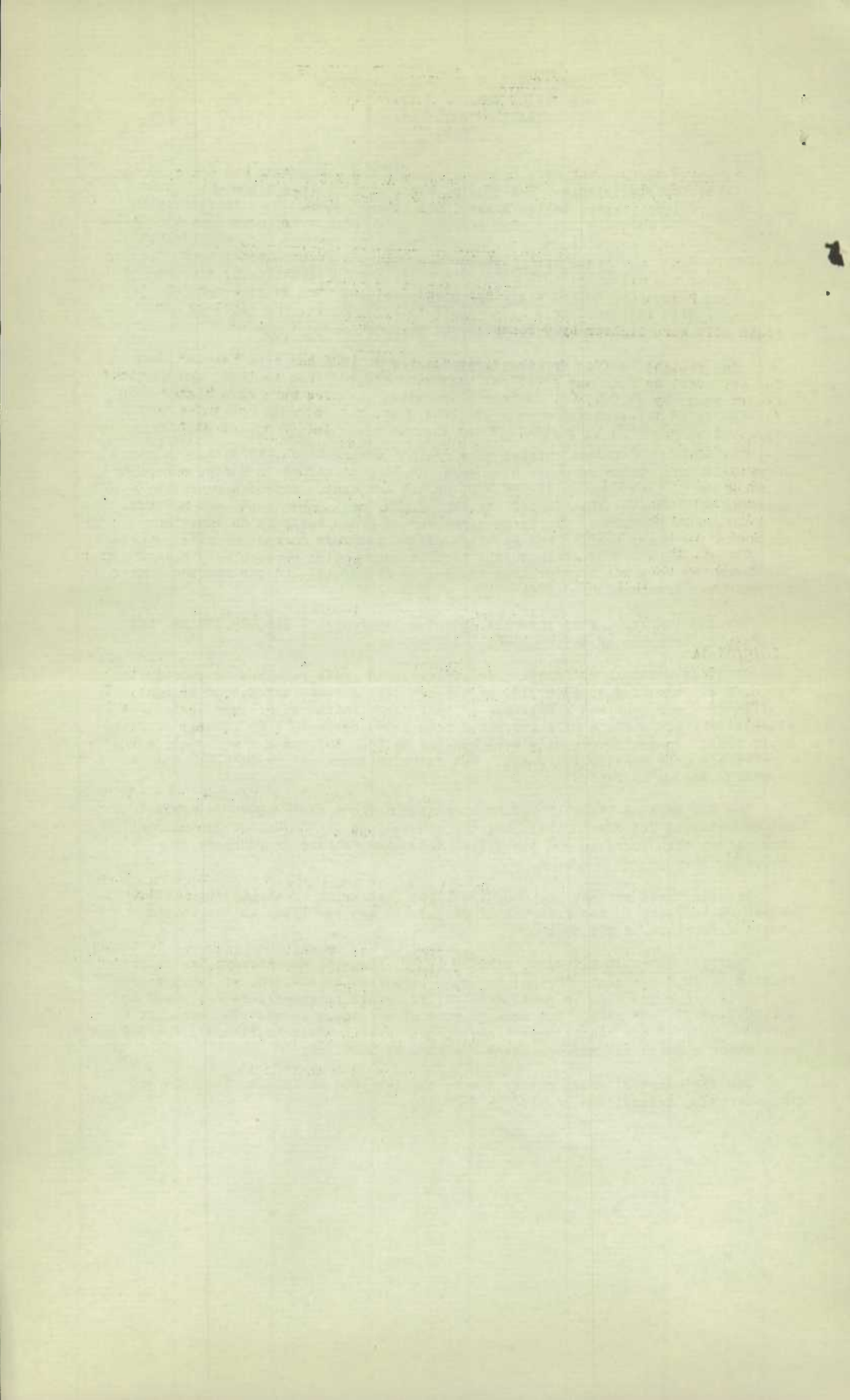
CANADIAN NATIONAL RAILWAYS: The increase in gross revenues, compared with March, 1927, amounted to \$756,717, or 4.5 per cent for an increase in freight traffic of 4 per cent and a decrease in passenger traffic of 6.3 per cent. The average receipts per ton mile increased from 1.044 cents to 1.067 cents, or by 2 per cent. Operating expenses were heavier by \$320,801, or 2.4 per cent, all general accounts showing increases. Net revenues increased by \$435,916 and the operating income by \$458,453.

The New England lines showed an operating deficit of \$42,994, as against net revenues of \$23,204 in 1927, but the other lines in the United States more than offset this decrease and the system net revenue showed an increase of \$448,866.

For the three months, the Canadian lines (exclusive of the Eastern lines) showed an increase in net revenues of \$2,347,173 and the lines in the United States a decrease of \$98,897.

CANADIAN NATIONAL RAILWAYS, EASTERN LINES: Despite an increase in freight traffic of 14.3 per cent, freight revenues were less by \$24,420, or 1.4 per cent, and, with a decline also in passenger traffic, gross revenues were decreased by \$52,094, or 2.1 per cent. The average receipt per ton mile was .796 cent, or a decrease of 13.7 per cent. Operating expenses were heavier by \$130,273, or 5.3 per cent which reduced the net operating revenues by \$182,368.

For the quarter, gross revenues were smaller than in 1927 by \$229,924 and the operating deficit was greater by \$529,480.



CANADIAN PACIFIC RAILWAY: Gross revenues for March ~~were~~ heavier than in 1927 by \$1,354,248, or 8.8 per cent. Passenger and express revenues showed decreases, but all other accounts were larger, freight revenues increasing by \$1,382,212, or 12.5 per cent. The increase in operating expenses amounted to \$728,346, or 5.9 per cent, making the net operating revenue larger by \$625,901. Freight revenue per train mile increased by 25 cents from a higher average revenue per ton mile, the revenue tons per train being practically the same as in 1927. Passenger traffic was lighter and, although the average receipts per passenger mile increased from 2.733 cents to 2.770 cents, the earnings per train mile were lighter by 9 cents.

The freight traffic for the first quarter of 1928 has been heavier than for any previous year and gross revenues were greater than in 1927, the previous record year, by \$4,021,865. Although operating expenses were also higher than for the first three months of any previous year, net operating revenues were larger than for 1927 by \$1,788,437 and the operating income was greater by \$1,651,673.

26/5/28/GA

OPERATING INSTRUCTIONS

1. 10. 1954

1. 10. 1954

1. 10. 1954

1. 10. 1954

1. 10. 1954

1. 10. 1954

1. 10. 1954

1. 10. 1954

1. 10. 1954

1. 10. 1954

1. 10. 1954

1. 10. 1954

1. 10. 1954

1. 10. 1954

1. 10. 1954

1. 10. 1954

1. 10. 1954

1. 10. 1954

1. 10. 1954

1. 10. 1954

1. 10. 1954

1. 10. 1954

1. 10. 1954

1. 10. 1954

1. 10. 1954

1. 10. 1954

1. 10. 1954

1. 10. 1954

1. 10. 1954

1. 10. 1954

1. 10. 1954

1. 10. 1954

1. 10. 1954

1. 10. 1954

1. 10. 1954

1. 10. 1954

1. 10. 1954

1. 10. 1954

1. 10. 1954

1. 10. 1954

1. 10. 1954

1. 10. 1954

1. 10. 1954

1. 10. 1954

1. 10. 1954

1. 10. 1954

1. 10. 1954

1. 10. 1954

1. 10. 1954

1. 10. 1954

1. 10. 1954

1. 10. 1954

1. 10. 1954

1. 10. 1954

1. 10. 1954

1. 10. 1954

1. 10. 1954

1. 10. 1954

1. 10. 1954

1. 10. 1954

1. 10. 1954

1. 10. 1954

1. 10. 1954

1. 10. 1954

1. 10. 1954

1. 10. 1954

1. 10. 1954

1. 10. 1954

1. 10. 1954

1. 10. 1954

1. 10. 1954

1. 10. 1954

1. 10. 1954

1. 10. 1954

1. 10. 1954

1. 10. 1954

1. 10. 1954

1. 10. 1954

1. 10. 1954

1. 10. 1954

1. 10. 1954

1. 10. 1954

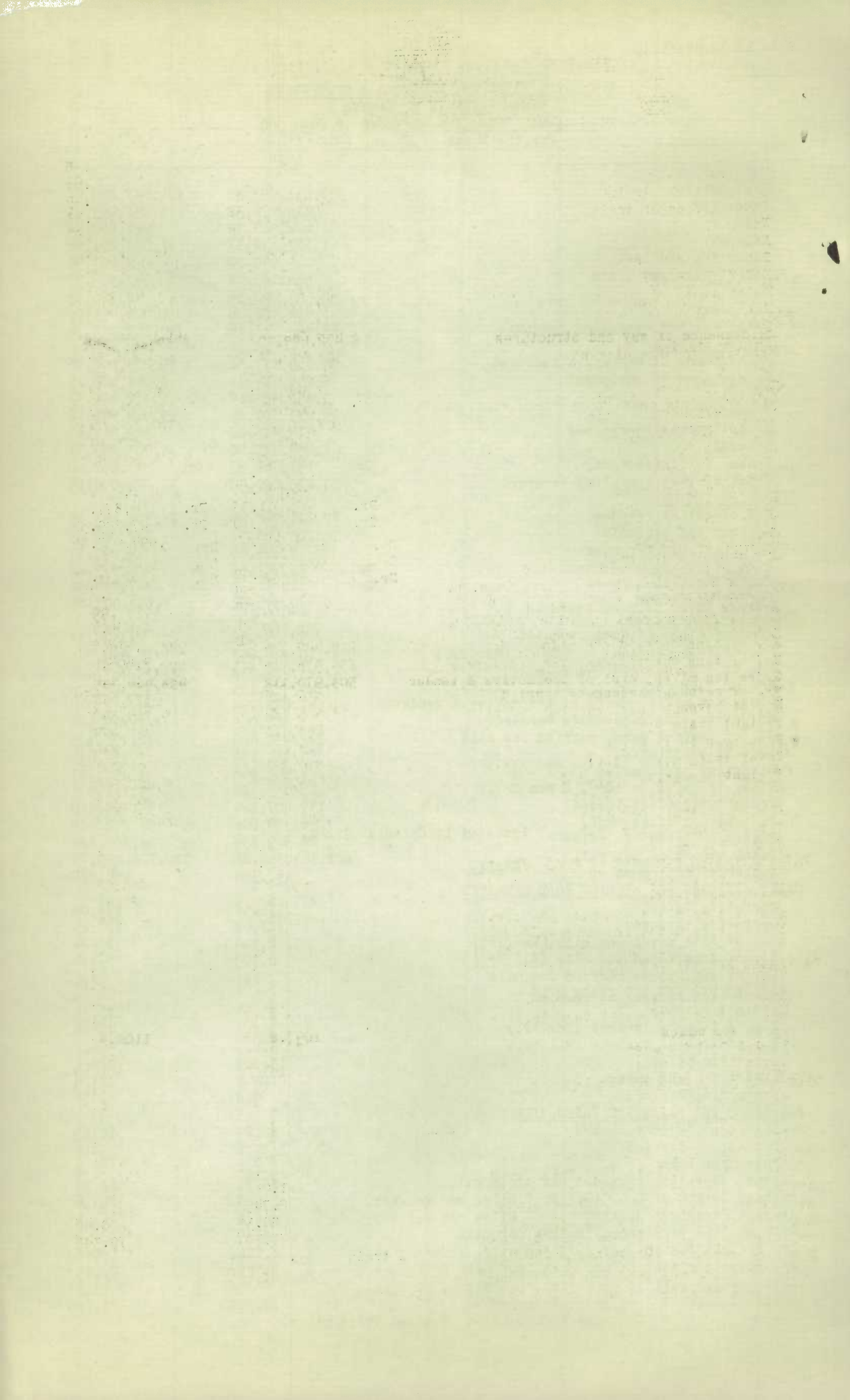
1. 10. 1954

1. 10. 1954

OPERATING REVENUES, EXPENSES & STATISTICS
STEAM RAILWAYS OF CANADA
WITH ANNUAL OPERATING REVENUES OF \$500,000
For the Month of March, 1928

	1928	1927
OPERATING REVENUES		
Freight	\$31,811,893.32	\$29,631,890.40
Passenger	6,115,870.30	6,252,243.05
Mail	622,473.32	618,560.58
Express	1,587,632.37	1,657,201.66
Other freight train	4,640.30	2,607.49
Other passenger train	594,183.28	547,976.33
Water line	61,367.52	48,300.83
All other	1,696,652.75	1,600,453.00
Total railway operating revenues	42,494,713.16	40,359,233.34
OPERATING EXPENSES		
Maintenance of way and structures	\$5,660,817.51	\$5,229,208.46
Maintenance of equipment	8,248,784.31	8,048,826.14
Traffic	1,398,455.12	1,372,681.13
Transportation	16,643,102.85	15,964,881.76
Miscellaneous operations	414,418.20	389,511.83
General	1,059,475.48	1,063,253.31
Trans. for investment	Cr. 151,762.57	Cr. 47,292.48
Total railway operating expenses	33,273,290.90	32,021,070.15
OPERATING INCOME		
Net operating revenue	\$9,221,422.26	\$8,338,163.19
Railway tax accruals	703,663.57	707,698.69
Uncollectable revenues	1,685.09	1,299.87
Hire of equipment	Dr. 33,701.58	Dr. 6,877.27
Joint facilities rents	Dr. 11,426.10	Dr. 27,289.51
Operating income	8,470,945.92	7,594,997.85
OPERATING STATISTICS		
Average miles of road operated	39,637.92	39,355.33
No. of tons carried (Rev. Fr.)	10,835,655	10,689,799
No. of tons carried one mile " "	2,923,456.738	2,774,767.011
No. of tons carried one mile (All Fr.)	3,328,338.021	3,139,852.306
Gross ton miles, excl. of locomotive & tender	7,541,688.794	7,140,417.042
No. of revenue passengers carried	3,420,069	3,605,688
No. of revenue pass. carried one mile	222,491.429	232,791.723
# Freight train miles	5,751,179	5,584,635
# Passenger train miles	4,003,966	3,955,393
Total train miles (Rev. & Non Rev.)	10,039,408	9,713,073
Freight car miles-loaded	139,407,124	131,455,810
Freight car miles-empty	56,394,001	58,292,488
Passenger train car miles	28,569,598	28,209,820
Total amount of pay roll	\$21,363,392.86	\$20,326,259.77
Number of employees	157,304	154,282
DAILY AVERAGES PER MILE OF ROAD OPERATED		
Operating revenue	\$34.58	\$33.08
Operating expenses	\$27.08	\$26.25
No. of tons moved one mile (Rev. Fr.)	2,379	2,274
No. of tons moved one mile (All Fr.)	2,709	2,574
No. of rev. pass. carried one mile	181	191
# AVERAGES PER FREIGHT TRAIN MILE		
Freight revenue	\$5.53	\$5.31
No. of tons of freight (Rev. Fr.)	508.3	496.8
No. of tons of freight (All Fr.)	578.7	566.2
Gross ton miles	1311.3	1278.6
Loaded freight cars	24.2	23.5
Empty freight cars	9.8	10.4
# AVERAGES PER PASSENGER TRAIN MILE		
Passenger train revenues	\$2.23	\$2.29
Passengers carried	55.6	58.9
Passenger cars	7.1	7.1
Average operating expenses per train mile	\$3.31	\$3.30
Average length of haul (Rev. Fr.) Miles per railway	269.8	259.6
Average Passenger journey Miles per railway	65.1	64.5
Average tons per loaded freight car mile	23.9	23.9
Av. freight receipt per rev. ton mile	1.088¢	1.068¢
Av. passenger receipt per pass. per mile	2.749¢	2.685¢
Ratio of pay roll to operating revenues	50.3%	50.4%
Ratio of operating expenses to revenues	78.30%	79.34%

Contains a proportion of mixed train miles.



OPERATING REVENUES, EXPENSES & STATISTICS

EASTERN LINES

CANADIAN NATIONAL RAILWAYS

For the month of March, 1928

	1928	1927
<u>OPERATING REVENUES</u>		
Freight	\$1,714,182.00	\$1,738,602.00
Passenger	411,633.00	438,348.00
Mail	65,200.00	66,848.17
Express	132,218.36	151,294.02
Other freight train	-	-
Other passenger train	48,788.05	37,186.82
Water Line	-	-
All other	84,071.59	75,908.93
Total railway operating revenues	2,456,093.00	2,508,187.94
<u>OPERATING EXPENSES</u>		
Maintenance of way and structures	\$ 402,695.90	\$ 394,888.52
Maintenance of equipment	523,035.74	516,872.36
Traffic	64,279.17	65,568.57
Transportation	1,475,345.21	1,372,865.27
Miscellaneous operations	32,124.43	30,209.15
General	107,761.22	101,044.84
Trans. for investment	Cr. 340.42	Cr. 6,821.19
Total railway operating expenses	2,604,901.25	2,474,627.52
<u>OPERATING INCOME</u>		
Net operating revenue	Dr. \$148,808.25	\$ 33,560.42
Railway tax accruals	21,608.01	21,927.25
Uncollectable revenues	45.11	88.09
Hire of equipment	Dr. 11,171.46	Dr. 17,455.51
Joint facilities rents	Dr. 3,622.35	Dr. 1,831.58
Operating income	Dr. 185,255.18	Dr. 7,742.01
<u>OPERATING STATISTICS</u>		
Average miles of road operated	3,108.04	3,107.99
No. of tons carried (Rev.Fr.)	738,667	634,967
No. of tons carried one mile " "	215,449,736	188,443,557
No. of tons carried one mile (All Fr.)	235,575,315	222,749,321
Gross ton miles, excl. of locomotive & tender	503,970,112	498,466,385
No. of revenue passengers carried	336,126	377,608
No. of revenue pass. carried one mile	18,585,484	19,730,500
# Freight train miles	459,312	452,975
# Passenger train miles	328,687	324,895
Total train miles (Rev. & Non Rev.)	810,349	792,201
Freight car miles - Loaded	9,445,084	9,028,545
Freight car miles - Empty	2,865,805	3,900,347
Passenger train car miles	2,265,966	2,280,421
Total amount of pay roll (Included in Canadian Lines)		
Number of employees " " " "		
<u>DAILY AVERAGES PER MILE OF ROAD OPERATED</u>		
Operating revenue	\$25.49	\$26.03
Operating expenses	\$27.04	\$25.68
No. of tons moved one mile (Rev.Fr.)	2,236	1,956
No. of tons moved one mile (All Fr.)	2,445	2,312
No. of rev. passengers carried one mile	193	205
<u>#AVERAGES PER FREIGHT TRAIN MILE</u>		
Freight revenue	\$3.73	\$3.84
No. of tons of freight (Rev.Fr.)	469.0	416.0
No. of tons of freight (All Fr.)	512.9	491.7
Gross ton miles	1097.2	1100.4
Loaded freight cars	20.6	19.9
Empty freight cars	6.2	8.6
<u>#AVERAGES PER PASSENGER TRAIN MILE</u>		
Passenger train revenues	\$2.00	\$ 2.14
Passengers carried	56.5	60.7
Passenger cars	6.9	7.0
Average operating expenses per train mile	\$3.21	\$ 3.12
Average length of haul (Rev.Fr.) Miles	291.7	296.7
Average passenger journey Miles	55.3	52.2
Average tons per loaded freight car mile	24.9	24.7
Av. freight receipt per rev. ton mile	.796¢	.923¢
Av. passenger receipt per pass. per mile	2.215¢	2.221¢
Ratio of pay roll to operating revenues	See Canadian National	
Ratio of operating expenses to revenues	106.06%	98.66%
# Contains a proportion of mixed train miles.		

OPERATING REVENUES, EXPENSES & STATISTICS

CANADIAN NATIONAL RAILWAYS

For the Month of March, 1928

	1928	1927
<u>OPERATING REVENUES</u>		
Freight	\$13,150,434.17	\$12,364,775.77
Passenger	2,278,935.56	2,331,370.86
Mail	193,157.47	191,518.25
Express	805,390.16	838,021.36
Other freight train	-	-
Other passenger train	211,109.70	197,532.53
Water line	-	-
All other	771,260.69	730,351.35
Total railway operating revenues	17,410,287.75	16,653,570.12
<u>OPERATING EXPENSES</u>		
Maintenance of way and structures	\$2,317,884.45	\$2,237,122.93
Maintenance of equipment	3,211,436.82	3,174,971.27
Traffic	481,264.54	466,915.32
Transportation	7,307,000.37	7,037,999.91
Miscellaneous operations	137,097.10	127,028.67
General	452,002.05	431,707.71
Trans. for investment	Cr. 150,316.10	Cr. 40,177.60
Total railway operating expenses	13,756,369.23	13,435,568.21
<u>OPERATING INCOME</u>		
Net operating revenue	\$3,653,918.52	\$3,218,001.91
Railway tax accruals	254,135.84	271,630.41
Uncollectable revenues	1,534.22	1,078.87
Hire of equipment	Cr. 133,567.18	Cr. 138,489.13
Joint facilities rents	Cr. 37,454.08	Cr. 27,034.57
Operating income	3,569,269.72	3,110,816.33
<u>OPERATING STATISTICS</u>		
Average miles of road operated	17,801.74	17,746.32
No. of tons carried (Rev. Fr.)	4,037,542	3,854,542
No. of tons carried one mile " "	1,232,677,924	1,184,920,321
No. of tons carried one mile (All Fr.)	1,419,024,248	1,389,379,635
Gross ton miles, excl. of locomotive & tender	3,110,349,985	3,054,958,955
No. of revenue passengers carried	1,375,027	1,526,789
No. of rev. passengers carried one mile	83,323,283	88,888,011
# Freight train miles	2,220,426	2,235,894
# Passenger train miles	1,614,218	1,584,811
Total train miles (Rev. & Non Rev.)	3,979,527	3,910,426
Freight car miles-loaded	57,405,140	56,020,374
Freight car miles-empty	23,107,222	23,890,207
Passenger train car miles	11,154,026	10,912,795
Total amount of pay roll (Including Eastern Lines)	\$11,489,396	\$ 11,072,952
Number of employees " " "	85,657	85,529
<u>DAILY AVERAGES PER MILE OF ROAD OPERATED</u>		
Operating revenue	\$31.55	\$30.27
Operating expenses	\$24.93	\$24.42
No. of tons moved one mile (Rev. Fr.)	2,234	2,154
No. of tons moved one mile (All Fr.)	2,571	2,526
No. of rev. passengers carried one mile	151	162
<u># AVERAGES PER FREIGHT TRAIN MILE</u>		
Freight revenue	\$5.92	\$5.53
No. of tons of freight (Rev. Fr.)	555.2	530.0
No. of tons of freight (All Fr.)	639.1	621.4
Gross ton miles	1400.8	1366.3
Loaded freight cars	25.9	25.1
Empty freight cars	10.4	10.5
<u># AVERAGES PER PASSENGER TRAIN MILE</u>		
Passenger train revenues	\$2.16	\$2.25
Passengers carried	51.6	56.1
Passenger cars	6.9	6.9
Average operating expenses per train mile	\$3.46	\$3.44
Average length of haul (Rev. Fr.) Miles	305.3	307.4
Average passenger journey Miles	60.6	58.2
Average tons per loaded freight car mile	24.7	24.8
Av. freight receipt per rev. ton mile	1.067¢	1.044¢
Av. passenger receipt per pass. per mile	2.735¢	2.623¢
x Ratio of pay roll to operating revenues	57.8%	57.8%
Ratio of Operating Expenses to Revenues	79.01%	80.68%
# Contains a proportion of mixed train miles.		
x Revenue of Eastern Lines included to determine ratio.		

OPERATING REVENUES, EXPENSES & STATISTICS

CANADIAN PACIFIC RAILWAY

For the Month of March, 1928

	1925	1927
<u>OPERATING REVENUES</u>		
Freight	\$12,397,50.29	\$11,015,438.26
Passenger	2,617,508.78	2,721,608.76
Mail	310,690.09	309,743.36
Express	444,287.00	445,755.30
Other freight train	4,404.95	949.78
Other passenger train	304,112.25	282,720.78
Water line	61,367.52	48,300.83
All other	679,113.35	640,368.73
Total railway operating revenues	16,819,134.23	15,464,885.80
<u>OPERATING EXPENSES</u>		
Maintenance of way and structures	2,177,728.52	1,919,509.46
Maintenance of equipment	3,563,598.21	3,407,468.65
Traffic	761,507.57	753,288.21
Transportation	6,036,522.69	5,716,685.51
Miscellaneous operations	192,876.94	187,840.41
General	315,771.77	334,866.60
Trans. for investment	-	-
Total railway operating expenses	13,048,005.70	12,319,058.84
<u>OPERATING INCOME</u>		
Net operating revenue	3,771,128.53	3,145,226.96
Railway tax accruals	293,778.59	290,372.40
Uncollectable revenues	-	-
Hire of equipment	Cr. 130,140.46	Cr. 127,696.37
Joint facilities rents	Cr. 25,716.20	Cr. 1,643.93
Operating income	3,633,206.60	2,984,194.86
<u>OPERATING STATISTICS</u>		
Average miles of road operated	14,241.8	14,004.0
No. of tons carried (Rev.Fr.)	2,887,133	2,626,099
No. of tons carried one mile " "	1,140,671.290	1,070,992.993
No. of tons carried one mile (All Fr.)	1,330,194.924	1,189,406.705
Gross ton miles, excl. of locomotive & tender	2,905,401.985	2,601,728.278
No. of revenue passengers carried	1,247,624	1,226,160
No. of rev. pass. carried one mile	94,482.013	99,575.533
# Freight train miles	2,307,178	2,146,163
# Passenger train miles	1,578,644	1,554,434
Total train miles (Rev. & Non Rev.)	3,975,714	3,756,632
Freight car miles-loaded	53,856.764	47,572,367
Freight car miles-empty	18,515,191	19,114,664
Passenger train car miles	11,546,181	11,471,053
Total amount of pay roll	\$8,065,121.10	\$7,503,594.33
Number of employees	58,978	56,153
<u>DAILY AVERAGES PER MILE OF ROAD OPERATED</u>		
Operating revenue	\$38.10	\$35.62
Operating expenses	\$29.55	\$28.38
No. of tons moved one mile (Rev.Fr.)	2,584	2,467
No. of tons moved one mile (All Fr.)	3,013	2,740
No. of rev. pass. carried one mile	214	229
<u>#AVERAGES PER FREIGHT TRAIN MILE</u>		
Freight revenue	\$5.38	\$ 5.13
No. of tons of freight (Rev.Fr.)	494.4	499.0
No. of tons of freight (All Fr.)	576.5	554.2
Gross ton miles	1259.3	1212.3
Loaded freight cars	23.3	22.2
Empty freight cars	8.0	8.9
<u>#AVERAGES PER PASSENGER TRAIN MILE</u>		
Passenger train revenues	\$2.33	\$2.42
Passengers carried	59.9	64.1
Passenger cars	7.3	7.4
Average operating expenses per train mile	\$3.28	\$3.23
Average length of haul (Rev.Fr.) Miles	395.1	407.7
Average passenger journey Miles	75.7	81.2
Average tons per loaded freight car mile	24.7	25.0
Av. freight receipt per rev. ton mile	1.0874	1.0294
Av. passenger receipt per pass. per mile	2.7704	2.7334
Ratio of pay roll to operating revenues	48.0%	48.5%
Ratio of operating expenses to revenues	77.58%	79.66%

Contains a proportion of mixed train miles.

7
CANADIAN NATIONAL SYSTEM
 (Steam Lines in Canada and United States)
 For the Month of March, 1928

OPERATING REVENUES

	<u>1928</u>	<u>1927</u>
Canadian Lines	\$17,410,287.75	\$16,653,570.12
Duluth, Winnipeg & Pacific	239,288.00	234,788.00
Grand Trunk Western Lines	3,246,462.00	3,100,170.00
New England Lines	261,612.25	278,578.30
Total	<u>21,157,650.00</u>	<u>20,267,106.42</u>

OPERATING EXPENSES

Canadian Lines	\$13,756,369.23	\$13,435,568.21
Duluth, Winnipeg & Pacific	172,232.89	177,496.01
Grand Trunk Western Lines	2,189,668.63	2,112,762.50
New England Lines	304,606.91	255,373.66
Total	<u>16,422,877.66</u>	<u>15,981,200.38</u>

NET OPERATING REVENUE

Canadian Lines	\$3,653,918.52	\$3,218,001.91
Duluth, Winnipeg & Pacific	67,055.11	57,291.99
Grand Trunk Western Lines	1,056,793.37	987,407.50
New England Lines	Dr. 42,994.66	23,204.64
Total	<u>4,734,772.34</u>	<u>4,285,906.04</u>

OPERATING INCOME

Canadian Lines	3,569,269.72	3,110,816.33
Duluth, Winnipeg & Pacific	34,837.34	42,354.62
Grand Trunk Western Lines	690,103.65	579,660.00
New England Lines	Dr. 127,781.41	Dr. 61,425.13
Total	<u>4,166,429.30</u>	<u>3,671,405.82</u>

S U M M A R Y

For Three Months Ended March 31st

	<u>1928</u>	<u>1927</u>
<u>ALL RAILWAYS</u>		

Operating Revenues	\$118,709,177.28	\$110,280,043.45
Operating Expenses	98,692,208.57	93,708,220.69
Net Operating Revenues	20,016,968.71	16,571,822.76
Operating Income	17,474,003.46	14,387,669.97

CANADIAN NATIONAL RAILWAYS

Operating Revenues- Canadian Lines	\$49,435,850.26	\$45,101,150.28
United States Lines	10,182,172.74	9,893,479.61
Total	<u>59,618,023.00</u>	<u>54,994,629.89</u>
Operating Expenses- Canadian Lines	41,607,682.58	39,620,155.30
United States Lines	7,486,346.29	7,098,755.75
Total	<u>49,094,028.87</u>	<u>46,718,911.05</u>
Net Operating Revenues- Canadian Lines	7,828,167.68	5,480,994.98
United States Lines	2,695,826.45	2,794,723.86
Total	<u>10,523,994.13</u>	<u>8,275,718.84</u>
Operating Income - Canadian Lines	7,317,669.07	4,997,176.74
United States Lines	1,272,695.61	1,358,950.79
Total	<u>8,590,364.68</u>	<u>6,356,127.53</u>

EASTERN LINES

CANADIAN NATIONAL RAILWAYS

Operating Revenues	\$6,242,826.00	\$6,472,750.31
Operating Expenses	7,422,842.26	7,123,287.26
Net Operating Revenue	Dr. 1,180,016.26	Dr. 650,536.95
Operating Income	1,300,870.99	740,859.38

CANADIAN PACIFIC RAILWAY

Operating Revenues	\$47,224,974.55	\$43,203,109.39
Operating Expenses	38,588,131.29	36,354,702.89
Net Operating Revenue	8,636,843.26	6,848,406.50
Operating Income	8,114,301.10	6,462,628.24

STATISTICS CANADA LIBRARY
BIBLIOTHEQUE STATISTIQUE CANADA



1010553423