

52 003

PROPERTY OF THE LIBRARY  
RECEIVED NOV 18 1928  
DOMINION BUREAU OF STATISTICS

C A N A D A  
DEPARTMENT OF TRADE AND COMMERCE  
DOMINION BUREAU OF STATISTICS  
TRANSPORTATION BRANCH

---

OPERATING REVENUES EXPENSES & STATISTICS  
of  
RAILWAYS

With Annual Operating Revenues of \$500,000

For  
SEPTEMBER  
1928

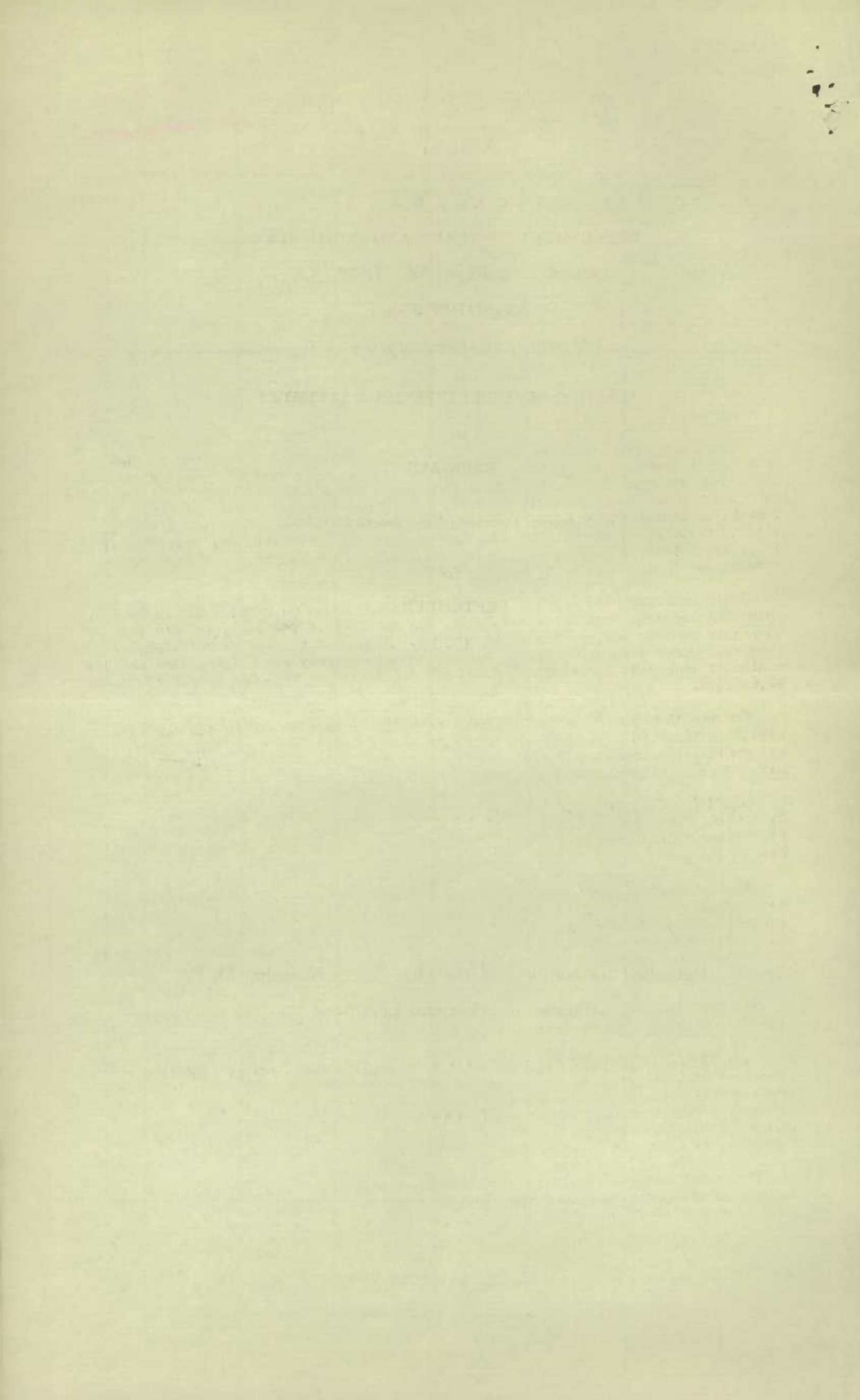
— + + + —

Published by authority of the Hon. James Malcolm, M. P.,  
Minister of Trade and Commerce

+ + +

OTTAWA

1928



DEPARTMENT OF TRADE AND COMMERCE  
DOMINION BUREAU OF STATISTICS  
TRANSPORTATION BRANCH  
OTTAWA

---

Dominion Statistician, R.H. Coats, B.A., F.S.S., (Hon.), F.R.S.C.  
Chief, Transportation Branch, G.S. Wrong, B.Sc.

---

OPERATING REVENUES, EXPENSES & STATISTICS

STEAM RAILWAYS OF CANADA

WITH ANNUAL OPERATING REVENUES OF \$500,000

FOR THE MONTH OF SEPTEMBER, 1928.

Canadian railways carried more freight during September, 1928, than in any previous September, the increase over last year being 57.7 per cent, and over 1925, the previous high September, 16 per cent. The large grain crop in the Prairie provinces, which was harvested early this year, was the main factor in this remarkable increase. Freight train loading jumped from 1,301.2 gross tons to 1,517.8 tons, or by 16 per cent, but the revenue per train mile was less than in September last year by 14 cents, which was due to the reduction in the average revenue per ton mile of .246 cent, or 20 per cent.

Gross revenues were heavier than in 1927 by \$8,100,055, or 18.9 per cent, operating expenses were increased by \$4,561,299, or 13.8 per cent, and the net operating revenue was greater by \$3,538,755. Passenger traffic showed a small increase; fewer persons travelled but the average journey was longer. The average number of employees increased by 9,653 and the total pay roll was larger by \$1,685,571.

For the nine months, gross revenues were the largest earned by the railways exceeding those of last year, the previous high record, by \$35,389,422, and the net revenue also made a new high record, exceeding that of 1927 by \$14,466,323 and of 1926, the previous high year, by \$6,917,378.

EASTERN LINES, CANADIAN NATIONAL RAILWAYS: The operating deficit for September, 1928, was \$600,688, or less than in 1927 by \$26,425, which was the first time this year that the operating deficit was less than for the same month last year.

Heavier traffic increased the freight revenue by \$180,123 and total revenues were larger by \$186,586. Operating expenses were heavier by \$160,161, maintenance expenses accounting for \$151,496 of this increase. Train loading averaged 1027.6 gross tons as against 1564.1 on the Canadian National and freight revenues per train mile, although larger than in 1927, were considerably less than on the Canadian National.

For the nine months, gross revenues were smaller than in 1927 by \$168,949 and the operating deficit increased by \$1,401,307.

CANADIAN NATIONAL RAILWAYS: The tons of freight handled during September increased by 21.8 per cent, but, from the much longer average haul, the ton miles increased by 61.2 per cent and freight revenues increased by \$3,022,833, or 23.8 per cent. Total gross revenues were larger by \$3,341,791, or 18.5 per cent, operating expenses increased by \$1,915,420, or 13.5 per cent, and the net revenue increased by \$1,263,957.

The lines in the United States showed a net increase in the net operating revenue of \$207,794, the increased deficit of the New England Lines being offset by larger net revenues on the other lines.





For the nine months, gross revenues increased by \$16,657,046 on the Canadian lines and by \$18,298,237 on the entire system, exclusive of the Eastern Lines, and the net revenues increased by \$8,606,913 on the Canadian Lines and by \$9,084,456 on the system.

CANADIAN PACIFIC RAILWAY: The revenue ton miles showed the remarkable increase over last year's of 74.6 per cent and were larger than for any previous September. Freight revenues increased by \$4,004,475, or 34.1 per cent and total revenues were larger by \$4,348,058, or 25.3 per cent. Maintenance expenses were high, especially maintenance of way and structures, which increased by \$1,004,610, or 45.1 per cent, and total expenses were heavier by \$2,495,749, or 19.9 per cent. The net operating revenue was larger by \$1,852,309 and the operating income increased by \$1,804,192. The heavy grain movement was the chief factor in the large increase in revenue ton miles, in the reduction of the average freight receipt per ton mile, in the increase in the average haul and in the freight train loading, also in the reduced revenue per freight train mile.

For the nine months, gross revenues were larger than in 1927 by \$17,997,603, net operating revenues by \$7,203,603, and the operating income by \$6,730,043.



OPERATING REVENUES, EXPENSES & STATISTICS  
STEAM RAILWAYS OF CANADA  
WITH ANNUAL OPERATING REVENUES OF \$500,000  
For the Month of September, 1928

	1928	1927
<u>OPERATING REVENUES</u>		
Freight	\$36,989,773.94	\$29,484,049.71
Passenger	7,407,171.29	7,302,633.15
Mail	647,151.60	633,586.28
Express	2,163,500.30	2,037,391.72
Other freight train	1,745.90	1,488.63
Other passenger train	883,811.87	864,914.45
Water line	301,624.07	298,064.35
All other	2,484,136.60	2,156,676.61
Total railway operating revenues	50,878,915.57	42,778,859.90
<u>OPERATING EXPENSES</u>		
Maintenance of way and structures	\$8,798,239.91	\$7,042,832.16
Maintenance of equipment	8,136,966.39	7,222,481.07
Traffic	1,518,237.06	1,516,870.53
Transportation	17,790,144.21	15,790,815.16
Miscellaneous operations	556,413.26	551,828.90
General	1,055,259.87	1,032,605.36
Trans. for investment	Cr. 240,866.18	Cr. 104,338.60
Total railway operating expenses	37,614,394.52	33,053,094.58
<u>OPERATING INCOME</u>		
Net operating revenue	\$13,264,521.05	\$9,725,765.32
Railway tax accruals	716,156.87	655,371.71
Uncollectable revenues	4,327.29	1,152.31
Hire of equipment	Dr. 204,088.65	Dr. 48,101.70
Joint facilities rents	Dr. 29,342.11	Cr. 23,287.94
Operating income	12,310,606.13	9,044,427.54
<u>OPERATING STATISTICS</u>		
Average miles of road operated	39,802.05	39,525.34
No. of tons carried (Rev. Fr.)	12,734,770	10,514,535
No. of tons carried one mile " "	3,869,850,750	2,453,532,877
No. of tons carried one mile (All Fr.)	4,250,599,969	2,835,194,000
Gross ton miles, excl. of locomotive & tender	10,072,157,498	6,719,254,395
No. of revenue passengers carried	3,025,404	3,096,165
No. of revenue passengers carried one mile	283,117,425	280,131,252
# Freight train miles	6,635,883	5,164,038
# Passenger train miles	4,371,087	4,449,913
Total train miles (Rev. & Non Rev.)	12,077,040	9,987,088
Freight car miles-loaded	168,626,373	122,813,216
Freight car miles-empty	81,799,167	58,968,520
Passenger train car miles	34,188,946	34,260,695
Total amount of pay roll	\$23,684,699.56	\$21,999,127.65
Number of employees	185,707	176,054
<u>DAILY AVERAGES PER MILE OF ROAD OPERATED</u>		
Operating revenue	\$42.61	\$36.08
Operating expenses	\$31.50	\$27.88
No. of tons moved one mile (Rev. Fr.)	3,241	2,069
No. of tons moved one mile (All Fr.)	3,560	2,391
No. of revenue passengers carried one mile	237	236
<u>#AVERAGES PER FREIGHT TRAIN MILE</u>		
Freight revenue	\$5.57	\$5.71
No. of tons of freight (Rev. Fr.)	583.2	475.1
No. of tons of freight (All Fr.)	640.5	549.0
Gross ton miles	1517.8	1301.2
Loaded freight cars	25.4	23.8
Empty freight cars	12.3	11.4
<u>#AVERAGES PER PASSENGER TRAIN MILE</u>		
Passenger train revenues	\$ 2.54	\$ 2.44
Passengers carried	64.8	63.0
Passenger cars	7.8	7.7
Average operating expenses per train mile	\$ 3.11	\$ 3.31
Average length of haul (Rev. Fr.) Miles	303.9	233.3
Average passenger journey Miles	93.6	90.5
Average tons per loaded freight car mile	25.2	23.1
Av. freight receipt per revenue ton mile	.956¢	1.202¢
Av. passenger receipt per passenger per mile	2.616¢	2.607¢
Ratio of pay roll to operating revenues	46.6%	51.4%
Ratio of operating expenses to revenues	73.93%	77.27%

# - Contains a proportion of mixed train miles.







OPERATING REVENUES, EXPENSES AND STATISTICS

EASTERN LINES

CANADIAN NATIONAL RAILWAYS

For the month of September, 1928

	1928	1927
<u>OPERATING REVENUES</u>		
Freight	\$1,235,728.00	\$1,055,605.00
Passenger	391,172.00	402,102.00
Mail	64,375.00	68,985.00
Express	164,119.16	160,799.75
Other freight train	-	-
Other passenger train	59,828.92	54,625.23
Water line	-	-
All other	79,004.92	65,524.41
Total railway operating revenues	1,994,228.00	1,807,641.39
<u>OPERATING EXPENSES</u>		
Maintenance of way and structures	\$765,399.58	\$670,848.16
Maintenance of equipment	456,389.39	399,444.84
Traffic	66,855.51	70,350.99
Transportation	1,163,863.34	1,152,782.40
Miscellaneous operations	36,834.96	37,340.22
General	109,003.33	109,016.38
Trans. for investment	Cr. 3,430.08	Cr. 5,027.53
Total railway operating expenses	2,594,916.53	2,434,755.46
<u>OPERATING INCOME</u>		
Net operating revenue	Dr. \$600,688.53	Dr. \$627,114.07
Railway tax accruals	21,639.77	21,970.34
Uncollectable revenues	3,160.23	4.54
Hire of equipment	Dr. 21,241.66	Cr. 16,072.27
Joint facilities rents	Cr. 594.02	Dr. 2,012.12
Operating income	Dr. 646,136.17	Dr. 635,028.80
<u>OPERATING STATISTICS</u>		
Average miles of road operated	3,108.04	3,107.99
No. of tons carried (Rev. Fr.)	531,553	438,847
No. of tons carried one mile " "	136,544,526	118,161,352
No. of tons carried one mile (All Fr.)	149,698,021	131,853,149
Gross ton miles, excl. of locomotive & tender	340,662,872	303,329,744
No. of revenue passengers carried	266,527	244,793
No. of revenue passengers carried one mile	17,461,385	17,848,928
# Freight train miles	331,519	314,301
# Passenger train miles	314,786	335,792
Total Train miles (Rev. & Non Rev.)	681,769	677,792
Freight car miles-loaded	6,759,872	5,960,673
Freight car miles-empty	2,157,090	2,060,077
Passenger train car miles	2,254,302	2,344,689
Total amount of pay roll	(Included in Canadian Lines)	
Number of employees	( " " " " )	
<u>DAILY AVERAGES PER MILE OF ROAD OPERATED</u>		
Operating Revenue	\$21.39	\$19.39
Operating Expenses	\$27.83	\$26.11
No. of tons moved one mile (Rev. Fr.)	1,464	1,267
No. of tons moved one mile (All Fr.)	1,605	1,414
No. of rev. passengers carried one mile	187	191
<u># AVERAGES PER FREIGHT TRAIN MILE</u>		
Freight revenue	\$3.73	\$3.36
No. of tons of freight (Rev. Fr.)	411.9	375.9
No. of tons of freight (All Fr.)	451.6	419.5
Gross ton miles	1027.6	965.7
Loaded freight cars	20.4	19.0
Empty freight cars	6.5	6.6
<u># AVERAGES PER PASSENGER TRAIN MILE</u>		
Passenger train revenues	\$2.16	\$2.04
Passengers carried	55.5	53.2
Passenger cars	7.2	7.0
Average operating expenses per train mile	\$3.81	\$3.59
Average length of haul (Rev. Fr.) Miles	256.9	269.3
Average passenger journey Miles	65.5	72.9
Average tons per loaded freight car mile	22.1	22.1
Av. freight receipt per revenue ton mile	.905¢	.893¢
Av. passenger receipt per passenger per mile	2.240¢	2.253¢
Ratio of pay roll to operating revenues	(Included in Canadian Lines)	
Ratio of operating expenses to revenues	130.12%	134.69%

\* Contains a proportion of mixed train miles.





## OPERATING REVENUES, EXPENSES &amp; STATISTICS

## CANADIAN NATIONAL RAILWAYS

For the Month of September, 1928

	1928	1927
<u>OPERATING REVENUES</u>		
Freight	\$15,729,316.04	\$12,706,482.13
Passenger	2,727,187.66	2,794,254.48
Mail	217,325.77	204,625.09
Express	1,220,587.97	1,069,822.11
Other freight train	-	-
Other passenger train	304,621.27	307,997.83
Water line	-	-
All other	1,218,109.27	992,174.66
Total railway operating revenues	21,417,147.98	18,075,356.30
<u>OPERATING EXPENSES</u>		
Maintenance of way and structures	\$3,919,701.29	\$3,188,112.42
Maintenance of equipment	3,342,257.15	2,980,861.89
Traffic	515,807.37	508,930.29
Transportation	7,983,627.07	7,021,083.97
Miscellaneous operations	190,347.21	194,316.72
General	436,592.92	437,230.58
Trans. for investment	Cr. 233,139.42	Cr. 90,762.81
Total railway operating expenses	16,155,193.59	14,239,773.06
<u>OPERATING INCOME</u>		
Net operating revenue	\$5,261,954.39	\$3,835,583.24
Railway tax accruals	253,800.76	238,043.68
Uncollectable revenues	979.48	1,099.69
Hire of equipment	Dr. 24,240.40	Cr. 92,531.04
Joint facilities rents	Cr. 17,556.50	Cr. 47,561.78
Operating income	5,000,490.25	3,736,532.69
<u>OPERATING STATISTICS</u>		
Average miles of road operated	17,821.47	17,729.33
No. of tons carried (Rev.Fr.)	4,539,049	3,725,363
No. of tons carried one mile " "	1,747,074.001	1,083,551.312
No. of tons carried one mile (All Fr.)	1,937,218.690	1,248,316.985
Gross ton miles, excl. of locomotive & tender	4,202,836.122	2,930,917.288
No. of revenue passengers carried	1,197,798	1,248,296
No. of revenue passengers carried one mile	112,646.154	111,969.967
# Freight train miles	2,687,017	2,127,476
# Passenger train miles	1,751,096	1,768,628
Total train miles (Rev. & Non Rev.)	4,679,538	4,071,589
Freight car miles-loaded	72,820,831	53,243,415
Freight car miles-empty	35,663,586	26,578,279
Passenger train car miles	13,387,264	13,525,685
Total amount of pay roll (Including Eastern Lines)	\$12,831,428	\$11,897,412
Number of employees " " "	101,951	96,532
<u>DAILY AVERAGES PER MILE OF ROAD OPERATED</u>		
Operating revenue	\$40.06	\$33.98
Operating expenses	\$30.22	\$26.75
No. of tons moved one mile (Rev.Fr.)	3,268	2,037
No. of tons moved one mile (All Fr.)	3,623	2,347
No. of revenue passengers carried one mile	211	211
<u>#AVERAGES PER FREIGHT TRAIN MILE</u>		
Freight revenue	\$5.85	\$5.97
No. of tons of freight (Rev.Fr.)	650.2	509.3
No. of tons of freight (All Fr.)	721.0	586.8
Gross ton miles	1564.1	1377.6
Loaded freight cars	27.1	25.0
Empty freight cars	13.3	12.5
<u>#AVERAGES PER PASSENGER TRAIN MILE</u>		
Passenger train revenues	\$2.55	\$2.47
Passengers carried	64.3	63.3
Passenger cars	7.6	7.6
Average operating expenses per train mile	\$3.45	\$3.50
Average length of haul (Rev.Fr.) Miles	384.9	290.9
Average passenger journey Miles	94.0	89.7
Average tons per loaded freight car mile	26.6	23.4
Av. freight receipt per revenue ton mile	.900¢	1.173¢
Av. passenger receipt per passenger per mile	2.421¢	2.496¢
x Ratio of pay roll to operating revenues	54.8%	59.8%
Ratio of operating expenses to revenues	75.43%	78.78%
x Revenue of Eastern Lines included to determine ratio.		
Contains a proportion of mixed train miles.		





## OPERATING REVENUES, EXPENSES &amp; STATISTICS

## CANADIAN PACIFIC RAILWAY

For the month of September, 1928

	1928	1927
<u>OPERATING REVENUES</u>		
Freight	\$15,754,655.23	\$11,750,180.21
Passenger	3,200,189.45	3,006,964.03
Mail	304,132.71	305,909.03
Express	538,930.81	510,197.20
Other freight train	911.08	779.42
Other passenger train	478,185.82	461,661.52
Water line	262,031.50	245,205.05
All other	986,402.33	896,483.93
Total railway operating revenues	21,525,438.93	17,177,380.39
<u>OPERATING EXPENSES</u>		
Maintenance of way and structures	\$3,232,886.49	\$2,228,275.59
Maintenance of equipment	3,447,589.63	2,958,018.39
Traffic	841,308.75	851,500.41
Transportation	6,911,999.37	5,943,484.08
Miscellaneous operations	270,211.92	259,693.06
General	329,416.35	296,691.59
Trans. for investment	Cr. --	--
Total railway operating expenses	15,033,412.51	12,537,663.12
<u>OPERATING INCOME</u>		
Net operating revenue	\$6,492,026.42	\$4,639,717.27
Railway tax accruals	303,805.38	273,603.93
Uncollectable revenues	--	--
Hire of equipment	Cr. 94,185.16	Cr. 91,611.61
Joint facilities rents	Cr. 15,797.78	Cr. 36,286.34
Operating income	6,298,203.98	4,494,011.29
<u>OPERATING STATISTICS</u>		
Average miles of road operated	14,376.7	14,181.7
No. of tons carried (Rev. Fr.)	4,367,545	3,171,270
No. of tons carried one mile " "	1,677,077,730	960,356,379
No. of tons carried one mile (All Fr.)	1,847,076,399	1,156,565,882
Gross ton miles, excl. of locomotive & tender	4,268,930,605	2,656,592,911
No. of revenue passengers carried	1,046,724	1,064,708
No. of rev. passengers carried one mile	117,543,840	114,077,410
# Freight Train miles	2,949,897	2,095,669
# Passenger Train miles	1,812,370	1,827,419
Total train miles (Rev. & Non Rev.)	5,515,434	4,050,742
Freight car miles-loaded	71,529,607	48,114,670
Freight car miles-empty	34,815,918	21,427,735
Passenger train car miles	14,367,231	14,294,097
Total amount of pay roll	\$8,934,825.78	\$8,227,829.80
Number of employees	69,080	65,425
<u>DAILY AVERAGES PER MILE OF ROAD OPERATED</u>		
Operating revenue	\$49.91	\$40.37
Operating expenses	\$34.86	\$29.47
No. of tons moved one mile (Rev. Fr.)	3,888	2,257
No. of tons moved one mile (All Fr.)	4,283	2,718
No. of rev. passengers carried one mile	273	268
<u>#AVERAGES PER FREIGHT TRAIN MILE</u>		
Freight revenue	\$5.34	\$5.61
No. of tons of freight (Rev. Fr.)	568.5	458.3
No. of tons of freight (All Fr.)	626.1	551.9
Gross ton miles	1447.1	1267.7
Loaded freight cars	24.2	23.0
Empty freight cars	11.8	10.2
<u>#AVERAGES PER PASSENGER TRAIN MILE</u>		
Passenger train revenues	\$2.49	\$2.34
Passengers carried	64.9	62.4
Passenger cars	7.9	7.8
Average operating expenses per train mile	\$2.73	\$3.10
Average length of haul (Rev. Fr.) Miles	384.0	302.8
Average passenger journey Miles	112.3	107.1
Average tons per loaded freight car mile	25.8	24.0
Av. freight receipt per revenue ton mile	.939¢	1.224¢
Av. passenger receipt per passenger per mile	2.723¢	2.636¢
Ratio of pay roll to operating revenues	41.5%	47.9%
Ratio of operating expenses to revenues	69.84%	72.99%

# Contains a proportion of mixed train miles.





7  
CANADIAN NATIONAL SYSTEM  
 (Steam Lines in Canada and United States)  
 For the Month of September, 1928

OPERATING REVENUES

	<u>1928</u>	<u>1927</u>
Canadian Lines	\$21,417,147.98	\$18,075,356.30
Duluth, Winnipeg and Pacific	232,204.00	226,076.00
Grand Trunk Western Lines	3,550,763.00	3,271,199.00
New England Lines	183,036.02	173,680.67
Total	<u>25,383,151.00</u>	<u>21,746,311.97</u>

OPERATING EXPENSES

Canadian Lines	\$16,155,193.59	\$14,239,773.06
Duluth, Winnipeg and Pacific	182,907.63	200,763.54
Grand Trunk Western Lines	2,332,707.89	2,240,870.42
New England Lines	198,681.10	185,409.50
Total	<u>18,869,490.21</u>	<u>16,866,816.52</u>

NET OPERATING REVENUE

Canadian Lines	\$5,261,954.39	\$3,835,583.24
Duluth, Winnipeg and Pacific	49,296.37	25,312.46
Grand Trunk Western Lines	1,218,055.11	1,030,328.58
New England Lines	Dr. 15,645.08	Dr. 11,728.83
Total	<u>6,513,660.79</u>	<u>4,879,495.45</u>

OPERATING INCOME

Canadian Lines	\$5,000,490.25	\$3,736,532.69
Duluth, Winnipeg and Pacific	44,017.06	17,912.42
Grand Trunk Western Lines	738,702.11	615,217.41
New England Lines	Dr. 78,564.76	Dr. 70,935.19
Total	<u>5,704,644.66</u>	<u>4,298,727.33</u>

S U M M A R Y  
 For Nine Months ended September 30th.

ALL RAILWAYS

	<u>1928</u>	<u>1927</u>
Operating Revenues	\$389,227,575.26	\$353,838,153.94
Operating Expenses	319,896,468.84	298,973,370.30
Net Operating Revenue	69,331,106.42	54,864,783.64
Operating Income	61,004,041.90	48,100,108.67

CANADIAN NATIONAL RAILWAY

Operating Revenues - Canadian Lines	\$163,072,066.19	\$146,415,020.25
United States Lines	33,245,755.81	31,604,565.17
Total	<u>196,317,822.00</u>	<u>178,019,585.42</u>
Operating Expenses - Canadian Lines	136,303,213.05	128,253,079.98
United States Lines	23,927,811.81	22,764,164.33
Total	<u>160,231,024.86</u>	<u>151,017,244.31</u>
Net Operating Revenue - Canadian Lines	26,768,853.14	18,161,940.27
United States Lines	9,317,944.00	8,840,400.84
Total	<u>36,086,797.14</u>	<u>27,002,341.11</u>
Operating Income - Canadian Lines	24,796,348.34	16,918,383.61
United States Lines	4,647,332.55	4,437,890.20
Total	<u>29,443,680.89</u>	<u>21,356,273.81</u>

CANADIAN NATIONAL - EASTERN LINES

Operating Revenues	\$18,749,989.00	\$18,918,938.07
Operating Expenses	24,196,516.17	22,964,158.09
Net Operating Revenue	Dr. 5,446,527.17	Dr. 4,045,220.02
Operating Income	Dr. 5,890,561.09	Dr. 4,298,082.28

CANADIAN PACIFIC RAILWAY

Operating Revenues	157,772,221.67	139,774,618.58
Operating Expenses	124,583,901.46	113,789,900.82
Net Operating Revenue	33,188,320.21	25,984,717.76
Operating Income	31,225,289.66	24,495,245.84

STATISTICS CANADA LIBRARY  
BIBLIOTHÈQUE STATISTIQUE CANADA



1010553429