

52 003

Historical File Copy

LIBRARY

1930

1930

C A N A D A
DEPARTMENT OF TRADE AND COMMERCE
DOMINION BUREAU OF STATISTICS
TRANSPORTATION BRANCH

OPERATING REVENUES EXPENSES & STATISTICS
of
RAILWAYS

With Annual Operating Revenues of \$500,000

For

NOVEMBER

1929

◆ ◆ ◆

Published by Authority of the Hon. James Malcolm, M.P..
Minister of Trade and Commerce

◆ ◆ ◆

OTTAWA

1930

REPORT OF THE
COMMISSIONER OF THE
GENERAL LAND OFFICE
FOR THE YEAR 1890

OTTAWA: PRINTED BY THE GOVERNMENT OF CANADA, 1891.

GENERAL STATEMENT OF THE LANDS

Under the provisions of the Act respecting the Lands of the Crown, passed in 1879, the Commission of the General Land Office has the honor to report to the Minister of the Interior, in relation to the lands of the Crown, for the year 1890.

CONTENTS

Page
General Statement of the Lands 1
Statement of the Lands of the Crown 2

Statement of the Lands of the Crown, as of the 1st of January, 1890, and of the 1st of January, 1891, and of the 1st of January, 1892, and of the 1st of January, 1893, and of the 1st of January, 1894, and of the 1st of January, 1895, and of the 1st of January, 1896, and of the 1st of January, 1897, and of the 1st of January, 1898, and of the 1st of January, 1899, and of the 1st of January, 1900.

Statement of the Lands of the Crown, as of the 1st of January, 1890, and of the 1st of January, 1891, and of the 1st of January, 1892, and of the 1st of January, 1893, and of the 1st of January, 1894, and of the 1st of January, 1895, and of the 1st of January, 1896, and of the 1st of January, 1897, and of the 1st of January, 1898, and of the 1st of January, 1899, and of the 1st of January, 1900.

Statement of the Lands of the Crown, as of the 1st of January, 1890, and of the 1st of January, 1891, and of the 1st of January, 1892, and of the 1st of January, 1893, and of the 1st of January, 1894, and of the 1st of January, 1895, and of the 1st of January, 1896, and of the 1st of January, 1897, and of the 1st of January, 1898, and of the 1st of January, 1899, and of the 1st of January, 1900.

Statement of the Lands of the Crown, as of the 1st of January, 1890, and of the 1st of January, 1891, and of the 1st of January, 1892, and of the 1st of January, 1893, and of the 1st of January, 1894, and of the 1st of January, 1895, and of the 1st of January, 1896, and of the 1st of January, 1897, and of the 1st of January, 1898, and of the 1st of January, 1899, and of the 1st of January, 1900.

Statement of the Lands of the Crown, as of the 1st of January, 1890, and of the 1st of January, 1891, and of the 1st of January, 1892, and of the 1st of January, 1893, and of the 1st of January, 1894, and of the 1st of January, 1895, and of the 1st of January, 1896, and of the 1st of January, 1897, and of the 1st of January, 1898, and of the 1st of January, 1899, and of the 1st of January, 1900.

Statement of the Lands of the Crown, as of the 1st of January, 1890, and of the 1st of January, 1891, and of the 1st of January, 1892, and of the 1st of January, 1893, and of the 1st of January, 1894, and of the 1st of January, 1895, and of the 1st of January, 1896, and of the 1st of January, 1897, and of the 1st of January, 1898, and of the 1st of January, 1899, and of the 1st of January, 1900.

DEPARTMENT OF TRADE AND COMMERCE
DOMINION BUREAU OF STATISTICS
TRANSPORTATION BRANCH
OTTAWA

Dominion Statistician, R.H. Coats, B.A., F.S.S., (Hon.), F.R.S.C.
Chief, Transportation Branch, G.S. Wrong, B.Sc.

OPERATING REVENUES, EXPENSES AND STATISTICS

STEAM RAILWAYS OF CANADA

WITH ANNUAL OPERATING REVENUES OF \$500,000

FOR THE MONTH OF NOVEMBER, 1929

Revenues of Canadian railways amounting to \$41,480,967 were the smallest for November for the past five years, being less than for November, 1928, by \$14,128,240, or 25.4 per cent. This slump in the revenues was largely due to the light movement of grain, the total revenue ton miles being less than in 1928 by 49.1 per cent. Operating expenses were reduced as compared with last year by \$6,809,890, but the net operating revenue was less by \$7,318,350. Passenger traffic also showed a decrease of 12.1 per cent. The average load per car mile was less by 4.9 tons and the freight train loading decreased by 186.5 gross tons.

For the eleven months, January - November, gross operating revenues were \$488,943,357 as against \$508,632,520 in 1928 and the operating income was less than in 1928 by \$16,855,846.

EASTERN LINES- CANADIAN NATIONAL RAILWAYS: The light grain movement did not affect the Eastern Lines to the same extent as the rest of the railways and the gross revenues showed an increase over those of November last year of \$151,592, or 6.7 per cent. Operating expenses also increased by \$166,842, thereby increasing the net operating revenue debit by \$15,249. Freight traffic showed a decrease of 20.2 per cent but passenger traffic increased by 15 per cent.

For the eleven months, gross revenues were heavier than in 1928 by \$2,933,556 and the operating income showed a debit of \$3,641,710 as against \$4,750,880 in 1928, or a betterment of \$1,109,170.

CANADIAN NATIONAL RAILWAYS: Freight traffic decreased by 48.7 per cent and passenger traffic by 17.9 per cent, causing a decrease in the gross revenues of \$5,486,904, or 23.8 per cent. Operating expenses were reduced by \$2,018,179, or 11.9 per cent, maintenance of way and structures showing practically no change, maintenance of equipment being lighter by 16.1 per cent and transportation by 15.2 per cent, and the net operating revenue decreased by \$3,468,724. The total pay roll, including the Eastern Lines, showed a decrease of only \$530,985, or 4.2 per cent, for a decrease of 4,665 in the number of employees. The effect of the light grain movement is reflected in the average receipt per revenue ton mile which increased from .769 cent to 1.075 cents, the average load per car which decreased by 5.1 tons, and the average load per train which decreased by 181.3 gross tons.

The lines in the United States also showed decreased gross and net earnings, the gross revenues for the system (exclusive of Eastern Lines) being less than for November, 1928, by \$6,354,310 and the net revenues by \$4,163,421.

For the eleven months, Canadian lines showed an operating income of \$28,799,105 as against \$39,169,690 in 1928 and the United States lines an operating income of \$5,485,648 as against \$5,569,445, the decrease for the system (exclusive of Eastern Lines) being \$10,454,382.

SECRET
U.S. DEPARTMENT OF THE ARMY
OFFICE OF THE CHIEF OF STAFF
WASHINGTON, D.C.

MEMORANDUM FOR THE CHIEF OF STAFF
SUBJECT: [Illegible]

1. [Illegible]

2. [Illegible]

3. [Illegible]

4. [Illegible]

[Illegible paragraph of text]

[Illegible paragraph of text]

[Illegible paragraph of text]

[Illegible paragraph of text]

[Illegible paragraph of text]

[Illegible paragraph of text]

[Illegible paragraph of text]

[Illegible paragraph of text]

[Illegible paragraph of text]

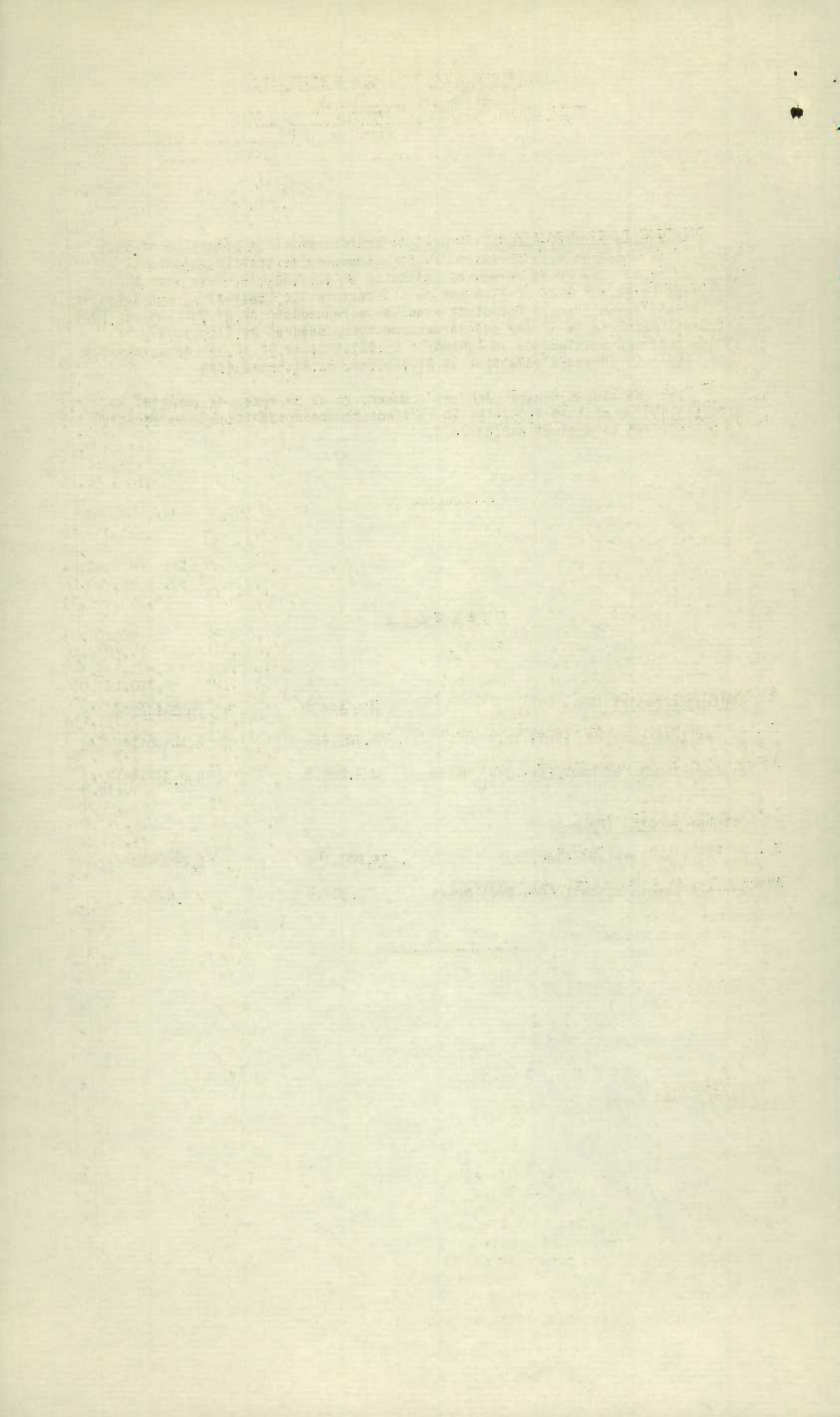
CANADIAN PACIFIC RAILWAY: Freight traffic showed a reduction of 56.5 per cent as compared with November, 1923, and passenger traffic a decrease of 12.2 per cent. The gross revenues, amounting to \$16,188,604, were less than last year by \$8,303,028, or 33.9 per cent, and were the lightest of any November in the past seven years. Operating expenses were reduced by \$4,966,909, or 30.9 per cent, maintenance of way and structures being reduced by \$1,669,684, or 53 per cent and maintenance of equipment by \$1,193,161, or 30 per cent, and the total pay roll showed a reduction of \$1,960,882, or 21.5 per cent.

For the eleven months, January - November, gross revenues amounted to \$196,183,499 as against \$209,419,410 in 1928 and the operating income amounted to \$39,991,275 as against \$48,537,678.

.....

E R R A T A

<u>September report (Page 6)</u>	<u>Reads</u>	<u>Should Read</u>
No. of tons carried (Rev. Fr.)	4,780,820	4,154,541
Average length of haul (Rev.Fr.) Miles	289.0	332.6
<u>October report (Page 6)</u>		
No. of tons carried (Rev.Fr.)	3,273,148	3,899,427
Average length of haul (Rev.Fr.) Miles	507.4	425.9



OPERATING REVENUES, EXPENSES & STATISTICS
STEAM RAILWAYS OF CANADA
WITH ANNUAL OPERATING REVENUES OF \$500,000
For the Month of November, 1929

	1929	1928
<u>OPERATING REVENUES</u>		
Freight	\$30,604,997.92	\$44,080,928.52
Passenger	5,290,967.73	5,897,745.00
Mail	647,426.53	619,586.94
Express	1,958,625.70	1,987,522.75
Other freight train	2,814.94	2,702.05
Other passenger train	593,472.36	558,667.90
Water line	253,717.04	304,789.27
All other	2,128,945.18	2,157,265.25
Total railway operating revenues	41,480,967.40	55,609,207.68
<u>OPERATING EXPENSES</u>		
Maintenance of way and structures	\$5,620,461.11	\$7,231,308.05
Maintenance of equipment	8,062,763.68	9,933,242.60
Traffic	1,321,637.21	1,485,432.23
Transportation	16,039,340.53	19,198,567.18
Miscellaneous operations	418,538.73	418,245.58
General	1,079,382.03	1,088,823.24
Trans. for investment	Cr. 190,261.22	Cr. 193,866.67
Total railway operating expenses	32,351,862.07	39,161,752.21
<u>OPERATING INCOME</u>		
Net operating revenue	\$9,129,105.33	\$16,447,455.47
Railway tax accruals	1,056,398.95	1,561,995.12
Uncollectable revenues	4,074.03	548.82
Hire of equipment	Dr. 255,666.20	Dr. 647,143.44
Joint facilities rents	Dr. 123,239.95	Dr. 30,769.16
Operating income	7,689,726.20	14,206,998.93
<u>OPERATING STATISTICS</u>		
Average miles of road operated	41,048.90	40,294.39
No. of tons carried (Rev.Fr.)	10,636,718	14,503,115
No. of tons carried one mile " "	2,786,107,459	5,471,447,340
No. of tons carried one mile (All Fr.)	3,019,537,120	5,780,183,036
Gross ton miles, excl. of locomotive & tender	6,769,906,218	12,141,549,379
No. of revenue passengers carried	2,543,280	2,631,238
No. of revenue passengers carried one mile	186,533,011	212,205,075
# Freight train miles	5,055,110	7,957,782
# Passenger train miles	3,993,130	3,955,779
Total train miles (Rev. & Non Rev.)	9,196,159	12,136,267
Freight car miles-loaded	120,745,401	193,159,918
Freight car miles-empty	58,552,121	115,697,204
Passenger train car miles	28,579,655	29,041,023
Total amount of pay roll	\$21,132,522.24	\$23,679,351.14
Number of employees	159,057	177,679
<u>DAILY AVERAGES PER MILE OF ROAD OPERATED</u>		
Operating revenue	\$33.68	\$46.00
Operating expenses	\$26.27	\$32.40
No. of tons moved one mile (Rev.Fr.)	2,262	4,526
No. of tons moved one mile (All Fr.)	2,452	4,782
No. of rev. passengers carried one mile	151	176
<u>#AVERAGES PER FREIGHT TRAIN MILE</u>		
Freight revenue	\$6.05	\$5.54
No. of tons of freight (Rev.Fr.)	551.1	687.6
No. of tons of freight (All Fr.)	597.3	726.4
Gross ton miles	1339.2	1525.7
Loaded freight cars	23.9	24.3
Empty freight cars	11.6	14.5
<u>#AVERAGES PER PASSENGER TRAIN MILE</u>		
Passenger train revenues	\$2.13	\$2.29
Passengers carried	46.7	53.6
Passenger cars	7.2	7.3
Average operating expenses per train mile	\$3.52	\$3.23
Average length of haul (Rev.Fr.) Miles	261.9	377.3
Average passenger journey Miles	73.3	80.6
Average tons per loaded freight car mile	25.0	29.9
Av. freight receipt per rev. ton mile	1.098¢	.806¢
Av. passenger receipt per passenger per mile	2.836¢	2.779¢
Ratio of pay roll to operating revenues	50.9%	42.6%
Ratio of operating expenses to revenues	77.99%	70.42%

Contains a proportion of mixed train miles.

OPERATING REVENUES, EXPENSES & STATISTICS

EASTERN LINES

CANADIAN NATIONAL RAILWAYS

For the month of November, 1929

	1929	1928
<u>OPERATING REVENUES</u>		
Freight xx	\$1,670,712.00	\$1,650,809.23
Passenger	348,529.00	317,586.00
Mail	65,940.00	62,500.00
Express	173,057.26	147,624.22
Other freight train	34.00	-
Other passenger train	44,681.03	34,298.21
Water line	-	-
All other	121,215.71	59,758.57
Total railway operating revenues	2,424,169.00	2,272,576.23
<u>OPERATING EXPENSES</u>		
Maintenance of way and structures	\$514,951.81	\$430,965.40
Maintenance of equipment	541,723.20	518,070.13
Traffic	65,178.13	60,984.85
Transportation	1,337,959.11	1,288,978.96
Miscellaneous operations	30,358.90	28,288.12
General	117,726.19	112,646.51
Trans. for investment	Cr. 3,593.96	Cr. 2,472.95
Total railway operating expenses	2,604,303.38	2,437,461.02
<u>OPERATING INCOME</u>		
Net operating revenue	Dr. \$180,134.38	Dr. \$164,884.79
Railway tax accruals	23,746.27	21,524.50
Uncollectable revenues	895.40	29.10
Hire of equipment	Dr. 26,486.70	Dr. 58,492.32
Joint facilities rents	Cr. 1,630.99	Cr. 20,120.84
Operating income	Dr. 229,631.76	Dr. 224,809.87
<u>OPERATING STATISTICS</u>		
Average miles of road operated	3,333.28	3,108.04
No. of tons carried (Rev.Fr.)	600,719	602,384
No. of tons carried one mile "	149,805.419	187,814.378
No. of tons carried one mile (All Fr.)	161,905,809	199,763,345
Gross ton miles, excl. of locomotive & tender	384,407,606	436,888,795
No. of revenue passengers carried	250,792	258,128
No. of revenue passengers carried one mile	14,413,569	12,531,280
# Freight train miles	392,491	412,414
# Passenger train miles	317,008	308,999
Total train miles (Rev. & Non Rev.)	720,082	732,478
Freight car miles-loaded	7,367,660	8,255,667
Freight car miles-empty	2,673,346	2,605,818
Passenger train car miles	2,104,457	1,994,110
Total amount of pay roll	Included in Canadian Lines	
Number of employees	" "	" "
<u>DAILY AVERAGES PER MILE OF ROAD OPERATED</u>		
Operating revenue	\$24.24	\$24.37
Operating expenses	\$26.04	\$26.14
No. of tons moved one mile (Rev.Fr.)	1,498	2,014
No. of tons moved one mile (All Fr.)	1,619	2,142
No. of rev. passengers carried one mile	144	134
<u>#AVERAGES PER FREIGHT TRAIN MILE</u>		
Freight revenue	\$4.26	\$4.00
No. of tons of freight (Rev.Fr.)	381.7	455.4
No. of tons of freight (All Fr.)	412.5	484.4
Gross ton miles	979.4	1059.3
Loaded freight cars	18.8	20.0
Empty freight cars	6.8	6.3
<u>#AVERAGES PER PASSENGER TRAIN MILE</u>		
Passenger train revenues	\$1.99	\$1.82
Passengers carried	45.5	40.6
Passenger cars	6.6	6.5
Average operating expenses per train mile	\$3.62	\$3.33
Average length of haul (Rev.Fr.) Miles	249.4	311.8
Average passenger journey Miles	57.5	48.5
Average tons per loaded freight car mile	22.0	24.2
Av. freight receipt per revenue ton mile	1.115¢	.879¢
Av. passenger receipt per passenger per mile	2.418¢	2.534¢
Ratio of operating expenses to revenues	107.43%	107.26%
xx - Including Acct. Maritime Freight Rates Act	\$192,753.00	\$228,810.23

Contains a proportion of mixed train miles.

OPERATING REVENUES, EXPENSES & STATISTICSCANADIAN NATIONAL RAILWAYS

For the month of November, 1929

	1929	1928
<u>OPERATING REVENUES</u>		
Freight	\$12,971,320.45	\$18,065,879.38
Passenger	1,894,488.18	2,254,055.22
Mail	210,988.51	209,054.67
Express	1,107,159.68	1,166,123.54
Other freight train	554.98	-
Other passenger train	217,966.75	200,874.69
Water line	-	-
All other	1,181,089.21	1,174,484.48
Total railway operating revenues	17,583,567.76	23,070,471.98
<u>OPERATING EXPENSES</u>		
Maintenance of way and structures	2,909,541.67	\$2,919,749.91
Maintenance of equipment	3,836,185.71	4,574,449.70
Traffic	496,367.84	477,235.98
Transportation	7,271,643.42	8,570,412.73
Miscellaneous operations	138,787.44	147,087.28
General	465,958.64	452,646.74
Trans. for investment	Cr. 183,912.35	Cr. 188,830.67
Total railway operating expenses	14,934,572.37	16,952,751.67
<u>OPERATING INCOME</u>		
Net operating revenue	\$2,648,995.39	\$6,117,720.31
Railway tax accruals	282,650.92	238,859.84
Uncollectable revenues	3,156.97	441.91
Hire of equipment	Dr. 34,708.48	Dr. 354,262.15
Joint facilities rents	Dr. 9,184.80	Cr. 12,468.90
Operating income	2,319,294.22	5,536,625.31
<u>OPERATING STATISTICS</u>		
Average miles of road operated	18,236.22	17,868.23
No. of tons carried (Rev.Fr.)	3,963,031	5,519,250
No. of tons carried one mile " "	1,206,113,229	2,349,218,439
No. of tons carried one mile (All Fr.)	1,338,891,606	2,503,551,135
Gross ton miles, excl. of locomotive & tender	3,019,669,700	5,238,855,789
No. of revenue passengers carried	1,078,802	1,114,609
No. of revenue passengers carried one mile	70,126,552	85,449,144
# Freight train miles	2,084,790	3,213,586
# Passenger train miles	1,650,366	1,641,227
Total train miles (Rev. & Non Rev.)	3,825,114	4,994,152
Freight car miles-loaded	53,704,832	83,418,275
Freight car miles-empty	25,641,770	49,943,575
Passenger train car miles	11,144,742	11,363,970
Total amount of pay roll (Including Eastern Lines)	\$12,197,901	\$12,728,886
Number of employees " " "	92,485	97,150
<u>DAILY AVERAGES PER MILE OF ROAD OPERATED</u>		
Operating revenue	\$32.14	\$43.04
Operating expenses	\$27.30	\$31.63
No. of tons moved one mile (Rev.Fr.)	2,205	4,382
No. of tons moved one mile (All Fr.)	2,447	4,670
No. of rev. passengers carried one mile	128	159
<u>#AVERAGES PER FREIGHT TRAIN MILE</u>		
Freight revenue	\$6.22	\$5.62
No. of tons of freight (Rev.Fr.)	578.5	731.0
No. of tons of freight (All Fr.)	642.2	779.1
Gross ton miles	1448.4	1630.2
Loaded freight cars	25.8	26.0
Empty freight cars	12.3	15.5
<u>#AVERAGES PER PASSENGER TRAIN MILE</u>		
Passenger train revenues	\$2.08	\$2.33
Passengers carried	42.5	52.1
Passenger cars	6.8	6.9
Average operating expenses per train mile	\$3.90	\$3.39
Average length of haul (Rev.Fr.) Miles	304.3	425.6
Average passenger journey Miles	65.0	76.7
Average tons per loaded freight car mile	24.9	30.0
Av. freight receipt per rev. ton mile	1.075¢	.769¢
Av. passenger receipt per passenger per mile	2.702¢	2.638¢
x Ratio of pay roll to operating revenues	61.0%	50.2%
Ratio of operating expenses to revenues	84.93%	73.48%
x - Revenue of Eastern Lines included to determine ratio.		
# - Contains a proportion of mixed train miles.		

OPERATING REVENUES, EXPENSES & STATISTICS

CANADIAN PACIFIC RAILWAY

For the month of November, 1929

	1929	1928
<u>OPERATING REVENUES</u>		
Freight	\$12,007,758.85	\$19,979,180.90
Passenger	2,284,168.65	2,517,726.80
Mail	294,749.83	294,767.86
Express	462,348.49	443,010.93
Other freight train	2,107.98	2,421.32
Other passenger train	298,138.30	289,159.52
Water line	212,587.98	229,484.27
All other	626,743.99	735,881.24
Total railway operating revenues	16,188,604.07	24,491,632.84
<u>OPERATING EXPENSES</u>		
Maintenance of way and structures	\$1,483,245.69	\$3,152,930.20
Maintenance of equipment	2,764,954.38	3,958,316.30
Traffic	662,301.02	858,209.76
Transportation	5,717,487.35	7,593,305.44
Miscellaneous operations	183,917.00	187,422.44
General	299,659.99	328,290.31
Trans. for investment	Cr. -	-
Total railway operating expenses	11,111,565.43	16,078,474.45
<u>OPERATING INCOME</u>		
Net operating revenue	\$5,077,038.64	\$8,413,158.39
Railway tax accruals	638,461.58	1,148,510.00
Uncollectable revenues	-	-
Hire of equipment	Cr. 120,423.40	Cr. 47,119.35
Joint facilities rents	Dr. 9,350.75	Dr. 5,657.99
Operating income	4,549,649.71	7,306,109.75
<u>OPERATING STATISTICS</u>		
Average miles of road operated	14,782.4	14,411.8
No. of tons carried (Rev.Fr.)	2,918,595	4,934,212
No. of tons carried one mile " "	1,136,006,436	2,611,501,123
No. of tons carried one mile (All Fr.)	1,217,761,313	2,748,672,308
Gross ton miles, excl. of locomotive & tender	2,511,755,183	5,582,630,661
No. of revenue passengers carried	865,497	871,708
No. of revenue passengers carried one mile	77,175,923	87,857,532
# Freight train miles	1,916,763	3,653,646
# Passenger train miles	1,540,844	1,533,584
Total train miles (Rev. & Non Rev.)	3,492,148	5,242,033
Freight car miles-loaded	44,776,863	84,893,774
Freight car miles-empty	19,921,090	53,512,824
Passenger train car miles	11,424,640	11,940,485
Total amount of pay roll	\$7,155,837.55	\$9,116,720.42
Number of employees	53,439	66,860
<u>DAILY AVERAGES PER MILE OF ROAD OPERATED</u>		
Operating revenue	\$36.50	\$56.65
Operating expenses	\$25.06	\$37.19
No. of tons moved one mile (Rev.Fr.)	2,562	6,040
No. of tons moved one mile (All Fr.)	2,746	6,357
No. of rev. passengers carried one mile	174	203
<u>#AVERAGES PER FREIGHT TRAIN MILE</u>		
Freight revenue	\$6.27	\$5.47
No. of tons of freight (Rev.Fr.)	592.7	714.8
No. of tons of freight (All Fr.)	635.3	752.3
Gross ton miles	1310.4	1528.0
Loaded freight cars	23.4	23.2
Empty freight cars	10.4	14.6
<u>#AVERAGES PER PASSENGER TRAIN MILE</u>		
Passenger train revenues	\$2.17	\$2.31
Passengers carried	50.1	57.3
Passenger cars	7.4	7.8
Average operating expenses per train mile	\$3.18	\$3.07
Average length of haul (Rev.Fr.) Miles	389.2	529.3
Average passenger journey Miles	89.2	100.8
Average tons per loaded freight car mile	27.2	32.4
Average freight receipt per revenue ton mile	1.057¢	.765¢
Average passenger receipt per passenger per mile	2.960¢	2.866¢
Ratio of pay roll to operating revenues	44.2%	37.2%
Ratio of operating expenses to revenues	68.64%	65.65%

Contains a proportion of mixed train miles.

7
CANADIAN NATIONAL SYSTEM
 (Steam Lines in Canada & United States)
 For the Month of November, 1929

OPERATING REVENUES

	1929	1928
Canadian Lines	\$17,583,567.76	\$23,070,471.98
Duluth, Winnipeg and Pacific	192,963.00	201,113.00
Grand Trunk Western Lines	2,275,577.00	3,076,489.00
New England Lines	151,894.24	210,238.02
Total	<u>20,204,002.00</u>	<u>26,558,312.00</u>

OPERATING EXPENSES

Canadian Lines	\$14,934,572.37	\$16,952,751.67
Duluth, Winnipeg and Pacific	165,621.62	161,974.48
Grand Trunk Western Lines	1,943,616.92	2,114,712.34
New England Lines	184,431.26	189,693.20
Total	<u>17,228,242.17</u>	<u>19,419,131.69</u>

NET OPERATING REVENUE

Canadian Lines	\$2,648,995.39	\$6,117,720.31
Duluth, Winnipeg & Pacific	27,341.38	39,138.52
Grand Trunk Western Lines	331,960.08	961,776.66
New England Lines	Dr. 32,537.02	20,544.82
Total	<u>2,975,759.83</u>	<u>7,139,180.31</u>

OPERATING INCOME

Canadian Lines	\$2,319,294.22	\$5,536,625.31
Duluth, Winnipeg and Pacific	20,628.19	29,037.78
Grand Trunk Western Lines	19,684.79	473,012.39
New England Lines	Dr. 97,667.46	Dr. 36,698.10
Total	<u>2,261,939.74</u>	<u>6,001,977.38</u>

S U M M A R Y

For Eleven Months ended November 30th

ALL RAILWAYS

	1929	1928
Operating Revenues	\$488,943,357.86	\$508,632,520.01
Operating Expenses	395,980,884.01	398,865,070.57
Net Operating Revenues	92,962,473.85	109,767,449.44
Operating Income	80,527,304.64	97,383,150.96

CANADIAN NATIONAL RAILWAYS

Operating Revenues - Canadian Lines	\$200,934,271.42	\$212,286,730.39
United States Lines	39,957,461.58	40,744,146.61
Total	<u>240,891,733.00</u>	<u>253,030,877.00</u>
Operating Expenses - Canadian Lines	168,728,831.34	170,093,853.90
United States Lines	29,035,436.93	29,387,731.82
Total	<u>197,764,268.27</u>	<u>199,481,585.72</u>
Net Operating Revenues - Canadian Lines	32,205,440.08	42,192,876.49
United States Lines	10,922,024.65	11,356,414.79
Total	<u>43,127,464.73</u>	<u>53,549,291.28</u>
Operating Income - Canadian Lines	28,799,105.65	39,169,690.50
United States Lines	5,485,648.18	5,569,445.41
Total	<u>34,284,753.83</u>	<u>44,739,135.91</u>

CANADIAN NATIONAL RAILWAYS - EASTERN LINES

Operating Revenues	\$27,904,539.00	\$24,970,983.21
Operating Expenses	30,932,673.02	29,159,532.39
Net Operating Revenues	Dr. 3,028,134.02	Dr. 4,188,549.18
Operating Income	Dr. 3,641,710.07	Dr. 4,750,880.55

CANADIAN PACIFIC RAILWAY

Operating Revenues	\$196,183,499.12	\$209,419,410.67
Operating Expenses	152,996,620.49	157,007,082.36
Net Operating Revenue	43,186,878.63	52,412,328.31
Operating Income	39,991,275.70	48,537,678.55



1010703567