

52 003

Historical File Copy

PROPERTY OF THE LIBRARY

APR 20 1930

STATISTICS CANADA

C A N A D A  
DEPARTMENT OF TRADE AND COMMERCE  
DOMINION BUREAU OF STATISTICS  
TRANSPORTATION BRANCH

OPERATING REVENUES EXPENSES & STATISTICS  
of  
RAILWAYS

With Annual Operating Revenues of \$500,000

For  
DECEMBER  
1929

---+ + +---

Published by Authority of the Hon. James Malcolm, M.P.,  
Minister of Trade and Commerce

+ + +

OTTAWA  
1930

5

11

DEPARTMENT OF TRADE AND COMMERCE  
DOMINION BUREAU OF STATISTICS  
TRANSPORTATION BRANCH  
OTTAWA

---

Dominion Statistician, R.H. Coats, B.A., F.S.S., (Hon.), F.R.S.C.  
Chief, Transportation Branch, G.S. Wrong, B.Sc.

---

OPERATING REVENUES, EXPENSES & STATISTICS

STEAM RAILWAYS OF CANADA

WITH ANNUAL OPERATING REVENUES OF \$500,000

FOR THE MONTH OF DECEMBER, 1929.

Canadian railways earned a smaller gross revenue in December, 1929, than any December in the past eight years, except 1924. The decrease from 1928 was \$9,394,177. The stagnation of the grain market with its effect on other traffic was the chief factor in the decrease in freight traffic of 48 per cent.

Operating expenses were cut by \$6,089,401, or 15.6 per cent, mainly through cuts in maintenance, but the net operating revenue was down \$3,304,775. The decrease in the pay roll was \$1,082,586, or 4.9 per cent, and in the number of employees, 11,650, or 7 per cent. The light grain movement increased the average revenue per ton mile and also the average revenue per freight train mile, the latter being \$5.61 as against \$5.34 in December, 1928.

EASTERN LINES- CANADIAN NATIONAL RAILWAYS: Gross revenues were less than in 1928 by \$274,895 and, with an increase in operating expenses of \$558,890, the net operating revenue showed a debit of \$169,241 as against a credit of \$664,544 in 1928. Freight traffic was lighter by 29.7 per cent, freight train loading showed a decrease of 163.7 gross tons, and revenues per train mile were reduced by 72 cents.

CANADIAN NATIONAL RAILWAYS: Freight traffic for December was 40.7 per cent lighter than in December, 1928, and freight revenues decreased by \$3,153,731, or 21.6 per cent, the average receipts per ton mile increasing from .877 cent to 1.160 cents. Passenger revenues also decreased and total gross revenues were less by \$3,502,649, or 17.4 per cent. Operating expenses were cut by \$1,523,294, or 9.4 per cent. The pay roll was increased by \$195,355 although the number of employees was less by 4,029, or 4.4 per cent.

The Duluth, Winnipeg and Pacific and Grand Trunk Western both showed decreases in gross and net revenues, but the New England Lines showed an increase in net operating revenue of \$6,482.

The system (excluding the Eastern Lines) showed a decrease in gross revenues of \$4,613,804 and in the operating income of \$2,169,335.





CANADIAN PACIFIC RAILWAY: Gross revenues amounting to \$15,452,161 were smaller than for any December in the past seven years. The decrease from 1928 was \$5,534,781, or 26.4 per cent. Passenger revenues contained adjustments for previous months and showed an increase, but freight revenues decreased by \$5,818,410, or 36.2 per cent.

Extensive reductions were made in operating expenses, maintenance of way and structures being reduced by \$1,902,223, or 45.5 per cent, and maintenance of equipment by \$1,829,837, or 44.8 per cent. Consequently the net operating revenues were increased by \$22,122. The total pay roll was reduced by \$1,211,606, or 14.3 per cent, for a reduction in the number of employees of 7,532, or 12.1 per cent.

550  
19/3/30/GA





OPERATING REVENUES, EXPENSES & STATISTICS  
STEAM RAILWAYS OF CANADA  
WITH ANNUAL OPERATING REVENUES OF \$500,000  
For the Month of December, 1929

	1929	1928
<u>OPERATING REVENUES</u>		
Freight	\$26,904,054.92	\$36,537,106.30
x Passenger	7,300,899.10	6,768,899.80
Mail	840,464.62	789,605.80
Express	2,288,836.63	2,356,877.93
Other freight train	3,810.06	1,385.21
Other passenger train	576,395.96	599,822.77
Water line	103,005.29	153,171.30
All other	1,973,178.74	2,177,952.64
Total railway operating revenues	39,990,645.32	49,384,822.35
<u>OPERATING EXPENSES</u>		
Maintenance of way and structures	\$6,163,265.71	\$8,412,794.65
Maintenance of equipment	7,555,955.25	9,546,226.07
Traffic	1,417,423.19	1,677,173.97
Transportation	16,684,582.62	18,324,798.21
Miscellaneous operations	421,084.76	453,900.37
General	1,017,271.82	933,675.46
Trans. for investment	Cr. 237,350.90	Cr. 236,934.92
Total railway operating expenses	33,022,232.45	39,111,633.81
<u>OPERATING INCOME</u>		
Net operating revenue	\$6,968,412.87	\$10,273,188.54
Railway tax accruals	1,785,819.67	1,789,284.05
Uncollectable revenues	5,255.08	13,713.94
Hire of equipment	Dr. 241,985.54	Dr. 417,384.39
Joint facilities rents	Cr. 181,314.72	Cr. 127,918.94
Operating income	5,116,667.30	8,180,725.10
<u>OPERATING STATISTICS</u>		
Average miles of road operated	41,063.04	40,442.38
No. of tons carried (Rev.Fr.)	9,371,554	11,678,731
No. of tons carried one mile " "	2,258,592,344	4,340,819,939
No. of tons carried one mile (All Fr.)	2,580,070,247	4,663,196,871
Gross ton miles, excl. of locomotive & tender	5,795,108,253	9,679,070,483
No. of revenue passengers carried	3,548,396	3,056,095
No. of revenue pass. carried one mile	228,855,375	237,351,687
# Freight train miles	4,797,333	6,844,800
# Passenger train miles	4,119,557	4,112,792
Total train miles (Rev. & Non Rev.)	9,144,696	11,067,032
Freight car miles-loaded	104,479,035	158,015,313
Freight car miles-empty	46,597,467	91,682,203
Passenger train car miles	30,013,096	30,757,656
Total amount of pay roll	\$20,924,005.25	\$22,006,591.53
Number of employees	155,840	167,490
<u>DAILY AVERAGES PER MILE OF ROAD OPERATED</u>		
Operating revenue	\$31.42	\$39.39
Operating expenses	\$25.94	\$31.20
No. of tons moved one mile (Rev.Fr.)	1,774	3,462
No. of tons moved one mile (All Fr.)	2,027	3,720
No. of rev. passengers carried one mile	180	189
<u>#AVERAGES PER FREIGHT TRAIN MILE</u>		
Freight revenue	\$5.61	\$5.34
No. of tons of freight (Rev.Fr.)	470.8	614.2
No. of tons of freight (All Fr.)	537.8	681.3
Gross ton miles	1208.0	1414.1
Loaded freight cars	21.8	23.1
Empty freight cars	9.7	13.4
<u>#AVERAGES PER PASSENGER TRAIN MILE</u>		
Passenger train revenues	\$2.67	\$2.56
Passengers carried	55.6	57.7
Passenger cars	7.3	7.5
Average operating expenses per train mile	\$3.61	\$3.53
Average length of haul (Rev.Fr.) Miles	241.0	371.7
Average passenger journey Miles	64.5	77.7
Average tons per loaded freight car mile	24.7	29.5
Av. freight receipt per rev. ton mile	1.191¢	.842¢
Av. passenger receipt per passenger per mile	3.190¢	2.852¢
Ratio of pay roll to operating revenues	52.3%	44.6%
Ratio of operating expenses to revenues	82.57%	79.20%
x - Adjustment in passenger revenue.		
# - Contains a proportion of mixed train miles.		

1941

1942

1943

1944

1945

1946

1947

1948

1949

1950

1951

1952

1953

1954

1955

1956

1957

1958

1959

1960

1961

1962

1963

1964

1965

1966

1967

1968

1969

1970

1971

1972

1973

1974

1975

1976

1977

1978

1979

1980

1981

1982

1983

1984

1985

1986

1987

1988

1989

1990

1991

1992

1993

1994

1995

1996

1997

1998

1999

2000

2001

2002

2003



## OPERATING REVENUES, EXPENSES &amp; STATISTICS

## EASTERN LINES

## CANADIAN NATIONAL RAILWAYS

For the month of December, 1929

	1929	1928
<b>OPERATING REVENUES</b>		
Freight xx	\$1,624,361.27	\$2,096,469.82
Passenger	564,896.71	473,084.92
Mail	93,454.48	86,319.10
Express	236,144.76	212,306.63
Other freight train	-	-
Other passenger train	48,440.53	43,610.27
Water line	-	-
All other	140,170.47	76,573.35
Total railway operating revenues	2,713,468.22	2,988,364.09
<b>OPERATING EXPENSES</b>		
Maintenance of way and structures	\$439,550.52	\$316,780.35
Maintenance of equipment	708,963.95	418,018.82
Traffic	108,425.24	76,448.33
Transportation	1,497,392.93	1,389,002.27
Miscellaneous operations	35,114.19	33,902.49
General	107,415.05	115,761.29
Trans. for investment	Cr. 14,152.60	Cr. 26,094.42
Total railway operating expenses	2,882,709.28	2,323,819.13
<b>OPERATING INCOME</b>		
Net operating revenue	Dr. \$169,241.06	\$664,544.96
Railway tax accruals	29,327.04	21,572.01
Uncollectable revenues	649.01	312.42
Hire of equipment	Dr. 316,772.10	Dr. 106,509.02
Joint facilities rents	Cr. 581.67	Cr. 10,632.84
Operating income	Dr. 515,407.54	546,784.35
<b>OPERATING STATISTICS</b>		
Average miles of road operated	3,332.54	3,104.36
No. of tons carried (Rev. Fr.)	455,795	681,473
No. of tons carried one mile " "	165,684,930	235,746,379
No. of tons carried one mile (All Fr.)	177,504,959	250,034,921
Gross ton miles, excl. of locomotive & tender	399,817,952	510,510,552
No. of revenue passengers carried	397,783	297,063
No. of rev. passengers carried one mile	23,754,221	19,702,892
# Freight train miles	404,791	443,387
# Passenger train miles	349,580	331,145
Total train miles (Rev. & Non Rev.)	776,565	779,968
Freight car miles-loaded	7,940,062	9,706,661
Freight car miles-empty	2,075,933	2,403,541
Passenger train car miles	2,407,583	2,316,240
Total amount of pay roll	(Included in Canadian Lines)	
Number of employees	" "	" "
<b>DAILY AVERAGES PER MILE OF ROAD OPERATED</b>		
Operating revenue	\$26.27	\$31.05
Operating expenses	\$27.90	\$24.15
No. of tons moved one mile (Rev. Fr.)	1,604	2,450
No. of tons moved one mile (All Fr.)	1,718	2,598
No. of rev. passengers carried one mile	229	205
<b>#AVERAGES PER FREIGHT TRAIN MILE</b>		
Freight revenue	\$4.01	\$4.73
No. of tons of freight (Rev. Fr.)	409.3	531.7
No. of tons of freight (All Fr.)	438.5	563.9
Gross ton miles	987.7	1151.4
Loaded freight cars	19.6	21.9
Empty freight cars	5.1	5.4
<b>#AVERAGES PER PASSENGER TRAIN MILE</b>		
Passenger train revenues	\$2.70	\$2.46
Passengers carried	68.0	59.5
Passenger cars	6.9	7.0
Average operating expenses per train mile	\$3.71	\$2.98
Average length of haul (Rev. Fr.) Miles	363.5	345.9
Average passenger journey Miles	59.7	66.3
Average tons per loaded freight car mile	22.4	25.8
Av. freight receipt per revenue ton mile	.980¢	.889¢
Av. passenger receipt per passenger per mile	2.378¢	2.401¢
Ratio of operating expenses to revenues	106.24%	77.76%
xx - Including Acc't. Maritime Freight Rates Act	\$141,795.82	\$172,320.54
# - Contains a proportion of mixed train miles.		



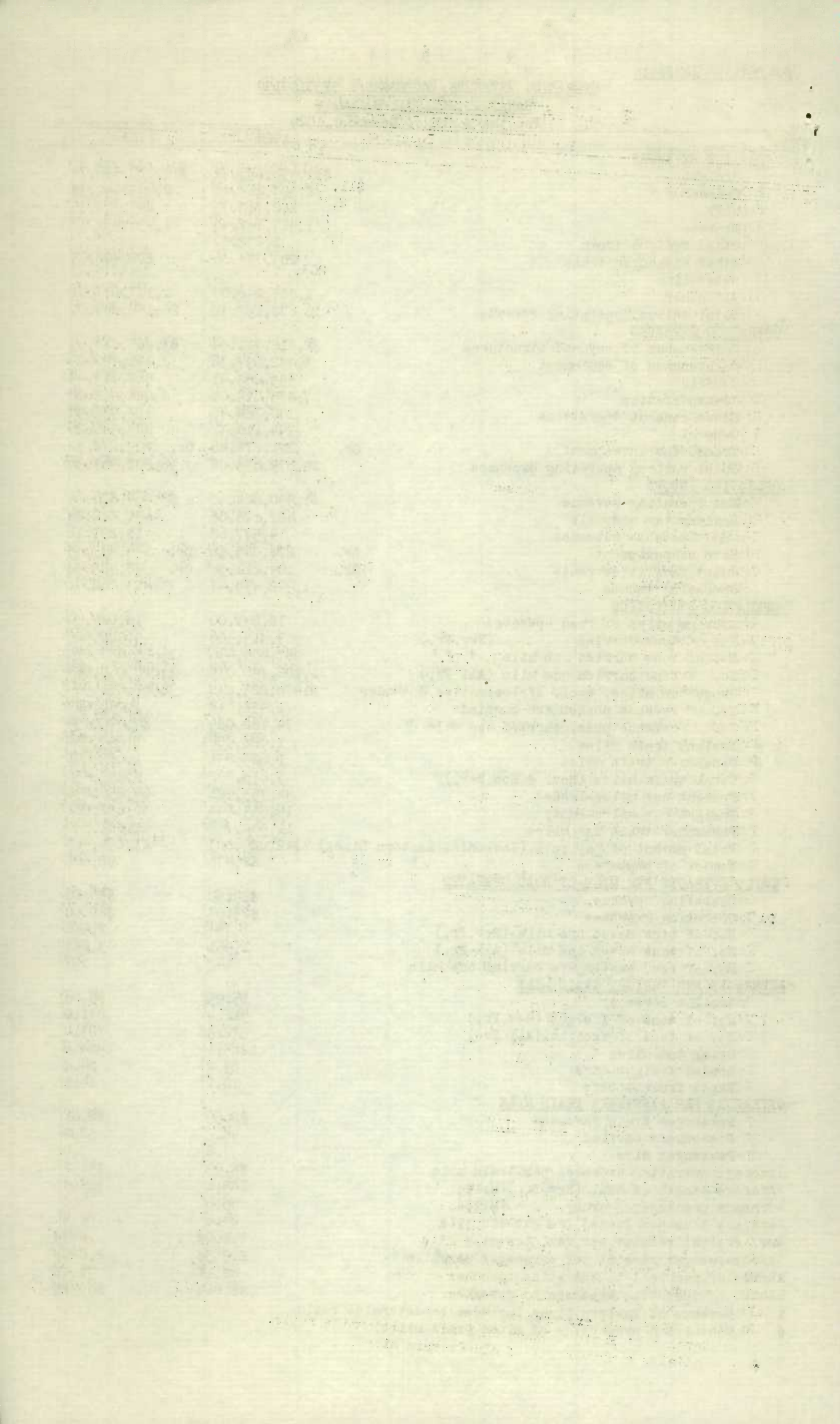


## OPERATING REVENUES, EXPENSES &amp; STATISTICS

## CANADIAN NATIONAL RAILWAYS

For the month of December, 1929

	1929	1928
<u>OPERATING REVENUES</u>		
Freight	\$11,456,855.71	\$14,610,586.75
Passenger	2,307,212.01	2,483,041.33
Mail	280,713.73	243,308.35
Express	1,413,162.44	1,436,431.11
Other freight train	1,232.57	-
Other passenger train	203,774.86	222,402.05
Water line	-	-
All other	1,007,246.07	1,177,077.41
Total railway operating revenues	16,670,197.39	20,172,847.00
<u>OPERATING EXPENSES</u>		
Maintenance of way and structures	\$2,815,711.94	\$3,285,818.69
Maintenance of equipment	3,482,697.36	3,841,797.29
Traffic	593,053.41	568,713.49
Transportation	7,475,014.04	8,088,411.26
Miscellaneous operations	140,764.42	153,938.90
General	394,110.31	473,560.25
Trans. for investment	Cr. 221,678.46	Cr. 209,272.52
Total railway operating expenses	14,679,673.02	16,202,967.36
<u>OPERATING INCOME</u>		
Net operating revenue	\$1,990,524.37	\$3,969,879.64
Railway tax accruals	427,173.08	431,812.28
Uncollectable revenues	4,577.68	13,293.16
Hire of equipment	Cr. 279,745.56	Dr. 175,437.43
Joint facilities rents	Cr. 104,211.30	Cr. 78,425.94
Operating income	1,942,730.47	3,427,762.71
<u>OPERATING STATISTICS</u>		
Average miles of road operated	18,231.00	18,024.10
No. of tons carried (Rev.Fr.)	3,415,506	4,520,905
No. of tons carried one mile " "	987,404,436	1,665,037,889
No. of tons carried one mile (All Fr.)	1,102,796,039	1,826,053,064
Gross ton miles, excl. of locomotive & tender	2,476,223,238	3,908,081,984
No. of revenue passengers carried	1,438,618	1,236,987
No. of revenue pass. carried one mile	79,162,085	87,775,179
# Freight train miles	1,926,906	2,597,382
# Passenger train miles	1,625,871	1,682,601
Total train miles (Rev. & Non Rev.)	3,675,592	4,353,450
Freight car miles-loaded	44,753,921	64,256,898
Freight car miles-empty	19,553,944	36,692,001
Passenger train car miles	11,343,753	11,822,570
Total amount of pay roll (Including Eastern Lines)	\$12,029,823	11,834,468
Number of employees " " "	88,476	92,505
<u>DAILY AVERAGES PER MILE OF ROAD OPERATED</u>		
Operating revenue	\$29.50	\$36.10
Operating expenses	\$25.97	\$29.00
No. of tons moved one mile (Rev.Fr.)	1,747	2,980
No. of tons moved one mile (All Fr.)	1,951	3,268
No. of rev. passengers carried one mile	140	157
<u>#AVERAGES PER FREIGHT TRAIN MILE</u>		
Freight revenue	\$5.95	\$5.63
No. of tons of freight (Rev.Fr.)	512.4	641.0
No. of tons of freight (All Fr.)	572.3	703.0
Gross ton miles	1285.1	1504.6
Loaded freight cars	23.2	24.7
Empty freight cars	10.1	14.1
<u>#AVERAGES PER PASSENGER TRAIN MILE</u>		
Passenger train revenues	\$2.59	\$2.61
Passengers carried	48.7	52.2
Passenger cars	7.0	7.0
Average operating expenses per train mile	\$3.99	\$3.72
Average length of haul (Rev.Fr.) Miles	289.1	368.3
Average passenger journey Miles	55.0	71.0
Average tons per loaded freight car mile	24.6	28.4
Av. freight receipt per rev. ton mile	1.160¢	.877¢
Av. passenger receipt per passenger per mile	2.915¢	2.829¢
xRatio of pay roll to operating revenues	62.1%	51.1%
Ratio of operating expenses to revenues	88.06%	80.32%
x - Revenue of Eastern Lines included to determine ratio.		
# - Contains a proportion of mixed train miles.		





Subject to Revision

## OPERATING REVENUES, EXPENSES &amp; STATISTICS

## CANADIAN PACIFIC RAILWAY

For the month of December, 1929

	1929	1928
<b>OPERATING REVENUES</b>		
Freight	\$10,249,543.38	\$16,067,954.18
x Passenger	3,333,656.23	2,874,537.12
Mail	391,935.45	391,119.64
Express	443,178.59	456,317.52
Other freight train	2,473.40	1,268.22
Other passenger train	293,042.60	299,191.73
Water line	102,280.53	142,029.64
All other	636,051.62	754,525.38
Total railway operating revenues	15,452,161.85	20,986,943.43
<b>OPERATING EXPENSES</b>		
Maintenance of way and structures	\$2,275,187.15	\$4,177,410.71
Maintenance of equipment	2,255,655.28	4,085,492.79
Traffic	609,348.43	931,994.20
Transportation	5,662,593.67	7,131,103.94
Miscellaneous operations	180,751.41	211,245.55
General	324,450.13	327,643.31
Trans. for investment	Cr. -	-
Total railway operating expenses	11,307,986.07	16,864,890.50
<b>OPERATING INCOME</b>		
Net operating revenue	\$4,144,175.78	\$4,122,052.93
Railway tax accruals	1,228,292.09	1,245,661.92
Uncollectable revenues	-	-
Hire of equipment	Cr. 112,767.54	Cr. 172,527.38
Joint facilities rents	Cr. 124,616.87	Cr. 107,854.75
Operating income	3,153,268.10	3,156,773.14
<b>OPERATING STATISTICS</b>		
Average miles of road operated	14,812.0	14,417.1
No. of tons carried (Rev.Fr.)	2,539,306	3,398,708
No. of tons carried one mile " "	909,504,673	2,144,240,263
No. of tons carried one mile (All Fr.)	1,015,767,483	2,284,735,866
Gross ton miles, excl. of locomotive & tender	2,132,008,343	4,428,423,819
No. of revenue passengers carried	1,226,360	1,043,548
No. of revenue passengers carried one mile	95,907,507	98,279,056
# Freight train miles	1,834,634	3,156,833
# Passenger train miles	1,617,289	1,607,150
Total train miles (Rev. & Non Rev.)	3,517,240	4,787,477
Freight car miles-loaded	38,080,163	68,798,269
Freight car miles-empty	15,973,797	42,366,899
Passenger train car miles	12,274,240	12,633,020
Total amount of pay roll	\$7,234,860.40	\$8,446,466.43
Number of employees	54,657	62,189
<b>DAILY AVERAGES PER MILE OF ROAD OPERATED</b>		
Operating revenue	\$33.65	\$46.96
Operating expenses	\$24.63	\$37.73
No. of tons moved one mile (Rev.Fr.)	1,981	4,798
No. of tons moved one mile (All Fr.)	2,212	5,112
No. of rev. passengers carried one mile	209	220
<b>#AVERAGES PER FREIGHT TRAIN MILE</b>		
Freight revenue	\$5.59	\$5.09
No. of tons of freight (Rev.Fr.)	495.7	679.2
No. of tons of freight (All Fr.)	553.7	723.7
Gross ton miles	1162.1	1402.8
Loaded freight cars	20.8	21.8
Empty freight cars	8.7	13.4
<b>#AVERAGES PER PASSENGER TRAIN MILE</b>		
Passenger train revenues	\$2.76	\$2.50
Passengers carried	59.3	61.2
Passenger cars	7.6	7.9
Average operating expenses per train mile	\$3.22	\$3.52
Average length of haul (Rev.Fr.) Miles	358.2	630.9
Average passenger journey Miles	78.2	94.2
Average tons per loaded freight car mile	26.7	33.2
Average freight receipt per rev. ton mile	1.127¢	.749¢
Average passenger receipt per passenger per mile	3.476¢	2.925¢
Ratio of pay roll to operating revenues	46.8%	40.2%
Ratio of operating expenses to revenues	73.18%	80.36%
x - Adjustment in passenger revenues.		
# - Contains a proportion of mixed train miles.		





CANADIAN NATIONAL SYSTEM  
(Steam Lines in Canada & United States)

For the Month of December, 1929

OPERATING REVENUES

	<u>1929</u>	<u>1928</u>
Canadian Lines	\$16,670,197.39	\$20,172,847.00
Duluth, Winnipeg & Pacific	171,771.48	199,679.97
Grand Trunk Western Lines	1,919,005.65	3,023,834.51
New England Lines	226,265.21	204,682.74
Total	<u>18,987,239.73</u>	<u>23,601,044.22</u>

OPERATING EXPENSES

Canadian Lines	\$14,679,673.02	\$16,202,967.36
Duluth, Winnipeg & Pacific	164,811.63	171,318.77
Grand Trunk Western Lines	2,016,071.88	2,215,503.81
New England Lines	192,067.61	176,968.02
Total	<u>17,052,624.14</u>	<u>18,766,757.96</u>

NET OPERATING REVENUE

Canadian Lines	\$1,990,524.37	\$3,969,879.64
Duluth, Winnipeg & Pacific	6,959.85	28,361.20
Grand Trunk Western Lines	Dr. 97,066.23	808,330.70
New England Lines	34,197.60	27,714.72
Total	<u>1,934,615.59</u>	<u>4,834,286.26</u>

OPERATING INCOME

Canadian Lines	\$1,942,730.47	\$3,427,762.71
Duluth, Winnipeg & Pacific	3,983.79	26,301.03
Grand Trunk Western Lines	Dr. 407,749.26	261,288.93
New England Lines	Dr. 25,238.35	Dr. 32,290.72
Total	<u>1,513,726.65</u>	<u>3,683,061.95</u>

