

52 008

Historical File Copy

R

C A N A D A
DEPARTMENT OF TRADE AND COMMERCE
DOMINION BUREAU OF STATISTICS
TRANSPORTATION BRANCH

OPERATING REVENUES EXPENSES & STATISTICS
of
RAILWAYS

With Annual Operating Revenues of \$500,000

For

FEBRUARY

1929

♦ ♦ ♦

Published by Authority of the Hon. James Malcolm, M.P.,
Minister of Trade and Commerce

♦ ♦ ♦

OTTAWA

1929

History of the City



DEPARTMENT OF TRADE AND COMMERCE
DOMINION BUREAU OF STATISTICS
TRANSPORTATION BRANCH
OTTAWA

Dominion Statistician, R.H. Coats, B.A., F.S.S., (Hon.), F.R.S.C.
Chief, Transportation Branch, G.S. Wrong, B.Sc.

OPERATING REVENUES, EXPENSES & STATISTICS

STEAM RAILWAYS OF CANADA

WITH ANNUAL OPERATING REVENUES OF \$500,000

FOR THE MONTH OF FEBRUARY, 1929.

The decrease in gross revenues of Canadian railways for February 1929, as against February 1928, of \$233,539, or .6 per cent, was entirely the effect of the extra day last year. One day is 3.57 per cent of a 28 day month and 3.45 per cent of a 29 day month. Freight traffic, however, decreased by 4.8 per cent due largely to a light movement of grain in the west. Passenger traffic showed a decrease of 2.1 per cent which was a slight gain on a daily basis. Operating expenses were heavier than in 1928 by \$692,849, or 2.2 per cent and the net operating revenue was reduced by \$926,389. With the exception of 1928's net revenue, however, it was considerably higher than for any previous February.

The car loading report shows that all the decrease in freight loading was in the western division but, with this picking up in March and April, total loadings caught up to and passed the record made last year by the end of the 15th week and consequently gross revenues may be expected to show increases.

For the two months, January and February, gross revenues were larger than in 1928 by \$336,936 but net operating revenues were less by \$663,499.

EASTERN LINES - CANADIAN NATIONAL RAILWAYS: Freight traffic was heavier than in 1928 by 2.4 per cent and freight revenues were larger by \$63,694, or 4.1 per cent. Passenger traffic also showed an increase of 9.3 per cent and passenger revenue an increase of \$20,514, or 6.7 per cent.

Total gross revenues were larger by \$105,183 or 5.0 per cent; but operating expenses were heavier by \$202,475, thus increasing the operating deficit by \$97,291. Included in freight revenues is \$153,831.00 for 1929 and \$150,169.36 for 1928 on account of differences in revenues earned under the Maritime Freight Rates Act. The average receipt per ton mile was 7.37 mills as against 8.78 mills in February 1928 - a larger movement of low class freight, chiefly grain for export, was the main cause of this decrease.

For January and February, gross revenues showed an increase of \$356,029 and the operating deficit was reduced by \$23,886, but larger hire of equipment debits increased the operating income debit which was \$9,951 larger than in 1928.

CANADIAN NATIONAL RAILWAYS (Eastern Lines Excluded): With a decrease in freight traffic of 9.4 per cent and in passenger traffic of 3.1 per cent, gross operating revenues decreased by \$191,623, or 1.2 per cent. Operating expenses increased by \$80,691, largely through heavier maintenance of equipment, and the net operating revenue showed a decrease of \$272,314. The pay roll showed little change and the earnings per freight and passenger mile were also practically the same. These latter are not affected by the difference in the length of the month and only 20 to 25 per cent of the pay roll is on a monthly basis.

The lines in the United States increased their net operating revenue by \$239,791, making the system net revenue (exclusive of Eastern Lines) \$3,435,687 as against \$3,468,210, a decrease of less than one per cent, whereas the one day less would have the effect of a decrease of 3.45 per cent.

For the two months, the Canadian lines showed a decrease of \$659,337 in net operating revenues, but the United States lines showed an increase of \$390,543, making the decrease \$268,794 for the system.

CANADIAN PACIFIC RAILWAY: The decrease in gross revenues of \$446,009, or 3.0 per cent, was slightly less than that caused by the difference of one day in the months, but operating expenses increased by \$303,950, or 2.5 per cent, decreasing the net operating revenues by \$749,959. Maintenance of way and structures showed an increase of \$109,554, or 6.3 per cent, and transportation expenses were heavier by \$122,392, or 2.1 per cent, despite the decrease in traffic, train miles and the one day in the month. Also the pay roll was heavier by \$335,260, or 4.5 per cent, for an increase of 4.3 per cent in the number of employees.

The cumulative totals for the two months show increases in gross revenues and expenses and a decrease in net operating revenues of \$645,720 and in the operating income of \$793,789.

550
29/4/29/GA

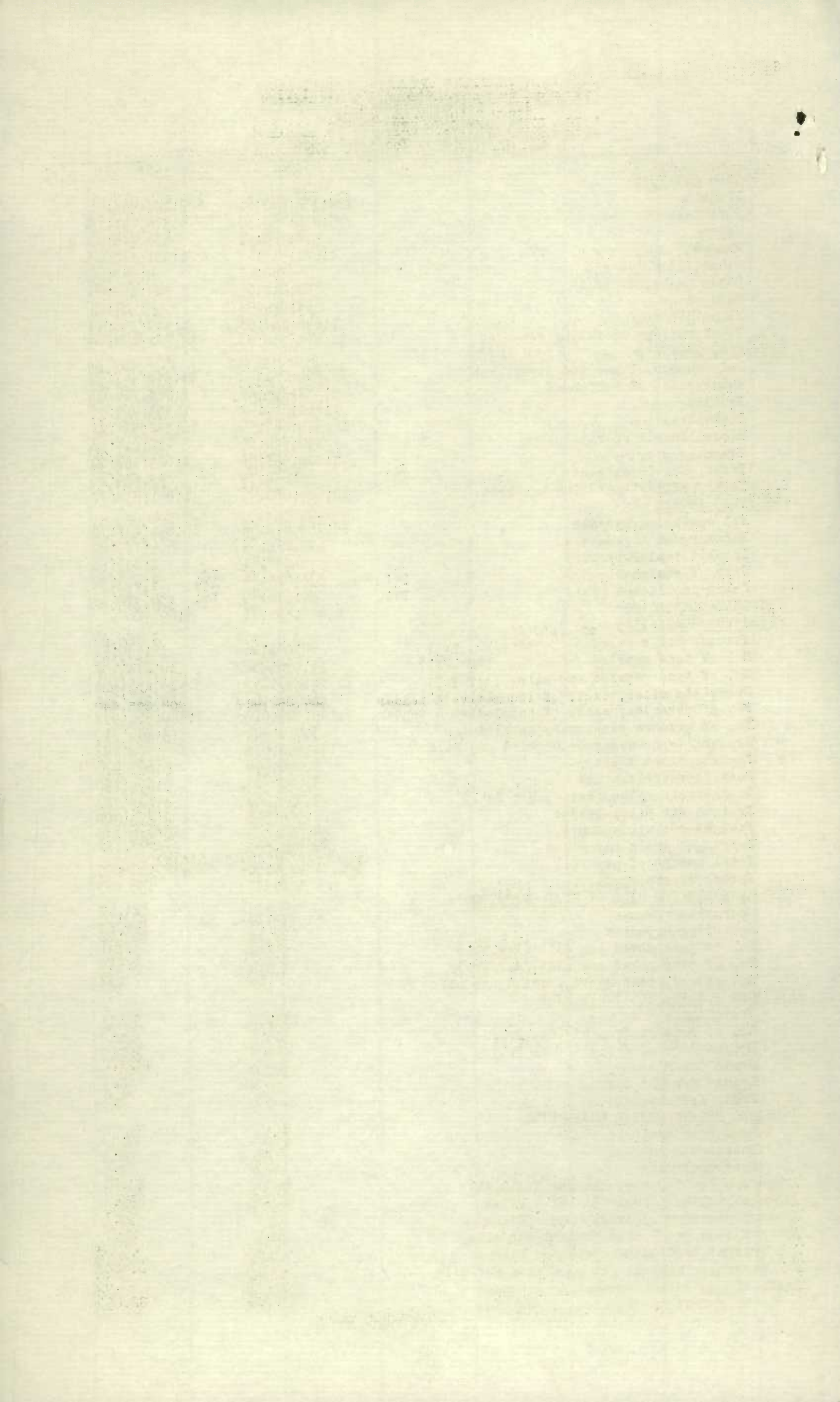
THE UNIVERSITY OF CHICAGO
DIVISION OF THE PHYSICAL SCIENCES
DEPARTMENT OF CHEMISTRY
JANUARY 1950
MEMORANDUM FOR THE RECORD
SUBJECT: [Illegible]
[Illegible text follows]

Prepared by [Illegible]
Checked by [Illegible]
Date [Illegible]

OPERATING REVENUES, EXPENSES & STATISTICS
STEAM RAILWAYS OF CANADA
WITH ANNUAL OPERATING REVENUES OF \$500,000
For the Month of February, 1929.

	1929	1928
<u>OPERATING REVENUES</u>		
Freight	\$28,778,666.61	\$29,108,938.21
Passenger	5,236,757.35	5,378,851.19
Mail	578,380.51	576,445.06
Express	1,601,515.47	1,511,832.07
Other freight train	780.48	5,247.65
Other passenger train	528,812.09	524,054.04
Water line	58,229.58	55,104.24
All other	1,646,187.98	1,502,396.99
Total railway operating revenues	38,429,330.07	38,662,869.45
<u>OPERATING EXPENSES</u>		
Maintenance of way and structures	\$4,866,041.00	\$4,948,467.98
Maintenance of equipment	8,358,964.64	7,888,786.07
Traffic	1,461,216.42	1,353,999.86
Transportation	16,578,647.56	16,392,524.27
Miscellaneous operations	432,494.19	412,014.16
General	1,022,958.95	1,023,888.02
Trans. for investment	Cr. 55,642.34	Cr. 47,849.66
Total railway operating expenses	32,664,680.42	31,971,830.70
<u>OPERATING INCOME</u>		
Net operating revenue	\$5,764,649.65	\$6,691,038.75
Railway tax accruals	695,222.54	665,779.20
Uncollectable revenues	397.41	1,039.76
Hire of equipment	Dr. 338,023.44	Dr. 74,603.50
Joint facilities rents	Dr. 81,114.49	Dr. 55,350.59
Operating income	4,649,891.77	5,894,265.70
<u>OPERATING STATISTICS</u>		
Average miles of road operated	40,043.15	39,550.72
No. of tons carried (Rev.Fr.)	10,638,257	10,212,152
No. of tons carried one mile " "	2,866,243,191	3,013,199,841
No. of tons carried one mile (All Fr.)	3,177,993,564	3,338,254,261
Gross ton miles, excl. of locomotive & tender	7,145,729,010	7,540,966,477
No. of revenue passengers carried	3,086,406	3,296,410
No. of rev. passengers carried one mile	181,590,677	185,502,197
# Freight train miles	5,666,496	5,699,479
# Passenger train miles	3,640,476	3,695,190
Total train miles (Rev. & Non Rev.)	9,466,266	9,649,323
Freight car miles-loaded	128,995,545	130,304,300
Freight car miles-empty	56,244,857	56,520,330
Passenger train car miles	25,164,222	25,262,180
Total amount of pay roll	\$20,718,830.56	\$20,327,616.20
Number of employees	160,727	156,583
<u>DAILY AVERAGES PER MILE OF ROAD OPERATED</u>		
Operating revenue	\$34.27	\$33.71
Operating expenses	\$29.13	\$27.88
No. of tons moved one mile (Rev.Fr.)	2,556	2,627
No. of tons moved one mile (All Fr.)	2,834	2,910
No. of rev. passengers carried one mile	162	162
<u>#AVERAGES PER FREIGHT TRAIN MILE</u>		
Freight revenue	\$5.08	\$5.11
No. of tons of freight (Rev.Fr.)	505.8	528.7
No. of tons of freight (All Fr.)	560.8	585.7
Gross ton miles	1261.0	1323.1
Loaded freight cars	22.8	22.9
Empty freight cars	9.9	9.9
<u>#AVERAGES PER PASSENGER TRAIN MILE</u>		
Passenger train revenues	\$2.18	\$2.16
Passengers carried	49.9	50.2
Passenger cars	6.9	6.8
Average operating expenses per train mile	\$3.45	\$3.31
Average length of haul (Rev.Fr.) Miles	269.4	295.1
Average passenger journey Miles	58.8	56.3
Average tons per loaded freight car mile	24.6	25.6
Av. freight receipt per rev. ton mile	1.004¢	.966¢
Av. passenger receipt per passenger per mile	2.884¢	2.900¢
Ratio of pay roll to operating revenues	53.9%	52.6%
Ratio of operating expenses to revenues	85.00%	82.69%

Contains a proportion of mixed train miles.



OPERATING REVENUES, EXPENSES & STATISTICS

EASTERN LINES

CANADIAN NATIONAL RAILWAYS

For the Month of February, 1929

	1929	1928
<u>OPERATING REVENUES</u>		
Freight	\$1,605,069.00	\$1,541,374.36
Passenger	328,972.00	308,458.00
Mail	65,500.00	65,200.00
Express	131,597.16	106,789.47
Other freight train	-	-
Other passenger train	37,094.48	31,971.49
Water line	-	-
All other	54,629.36	63,885.04
Total railway operating revenues	2,222,862.00	2,117,678.36
<u>OPERATING EXPENSES</u>		
Maintenance of way and structures	\$359,115.80	\$410,147.09
Maintenance of equipment	623,761.30	445,816.67
Traffic	60,842.92	65,010.42
Transportation	1,459,604.19	1,362,945.91
Miscellaneous operations	31,616.30	31,180.07
General	112,134.87	107,412.70
Trans. for investment	Cr. 22,332.51	Cr. 245.33
Total railway operating expenses	2,624,742.87	2,422,267.53
<u>OPERATING INCOME</u>		
Net operating revenue	Dr. \$401,880.87	Dr. \$304,589.17
Railway tax accruals	21,568.60	21,551.05
Uncollectable revenues	45.79	47.42
Hire of equipment	Dr. 39,094.94	Cr. 3,731.80
Joint facilities rents	Cr. 2,582.89	Dr. 1,810.12
Operating income	Dr. 460,007.31	Dr. 324,265.96
<u>OPERATING STATISTICS</u>		
Average miles of road operated	3,104.36	3,108.04
No. of tons carried (Rev. Fr.)	535,440	611,143
No. of tons carried one mile " "	217,796,478	175,619,320
No. of tons carried one mile (All Fr.)	232,216,377	190,528,049
Gross ton miles, excl. of locomotive & tender	504,252,417	404,295,542
No. of revenue passengers carried	315,182	281,235
No. of revenue pass. carried one mile	14,034,613	12,834,881
# Freight train miles	457,133	382,122
# Passenger train miles	291,194	297,928
Total train miles (Rev. & Non Rev.)	762,838	717,221
Freight car miles-loaded	9,091,628	7,899,980
Freight car miles-empty	3,553,254	2,090,156
Passenger train car miles	1,891,309	1,862,845
Total amount of pay roll	(Included in Canadian Lines)	
Number of Employees	" " "	" "
<u>DAILY AVERAGES PER MILE OF ROAD OPERATED</u>		
Operating revenue	\$25.57	\$23.49
Operating expenses	\$30.20	\$26.87
No. of tons moved one mile (Rev. Fr.)	2,506	1,948
No. of tons moved one mile (All Fr.)	2,672	2,114
No. of rev. passengers carried one mile	161	142
<u># AVERAGES PER FREIGHT TRAIN MILE</u>		
Freight revenue	\$3.51	\$4.03
No. of tons of freight (Rev. Fr.)	476.4	459.6
No. of tons of freight (All Fr.)	508.0	498.6
Gross ton miles	1103.1	1058.0
Loaded freight cars	19.9	20.7
Empty freight cars	7.8	5.5
<u># AVERAGES PER PASSENGER TRAIN MILE</u>		
Passenger train revenues	\$1.93	\$1.72
Passengers carried	48.2	43.1
Passenger cars	6.5	6.3
Average operating expenses per train mile	\$3.44	\$3.38
Average length of haul (Rev. Fr.) Miles	372.0	287.4
Average passenger journey Miles	44.5	45.6
Average tons per loaded freight car mile	25.5	24.1
Av. freight receipt per rev. ton mile	.737¢	.878¢
Av. passenger receipt per passenger per mile	2.344¢	2.403¢
Ratio of pay roll to operating revenues	(Included in Canadian Lines)	
Ratio of operating expenses to revenues	118.08%	114.38%
# Contains a proportion of mixed train miles.		

U.S. DEPARTMENT OF THE INTERIOR
BUREAU OF LAND MANAGEMENT
WASHINGTON, D.C. 20250

TO: [illegible]
FROM: [illegible]
SUBJECT: [illegible]
DATE: [illegible]
[The remainder of the page contains several paragraphs of extremely faint, illegible text, likely a memorandum or letter. Some fragments are visible, such as "The following information was obtained from..." and "It is recommended that..."]

OPERATING REVENUES, EXPENSES & STATISTICS

CANADIAN NATIONAL RAILWAYS

For the Month of February, 1929.

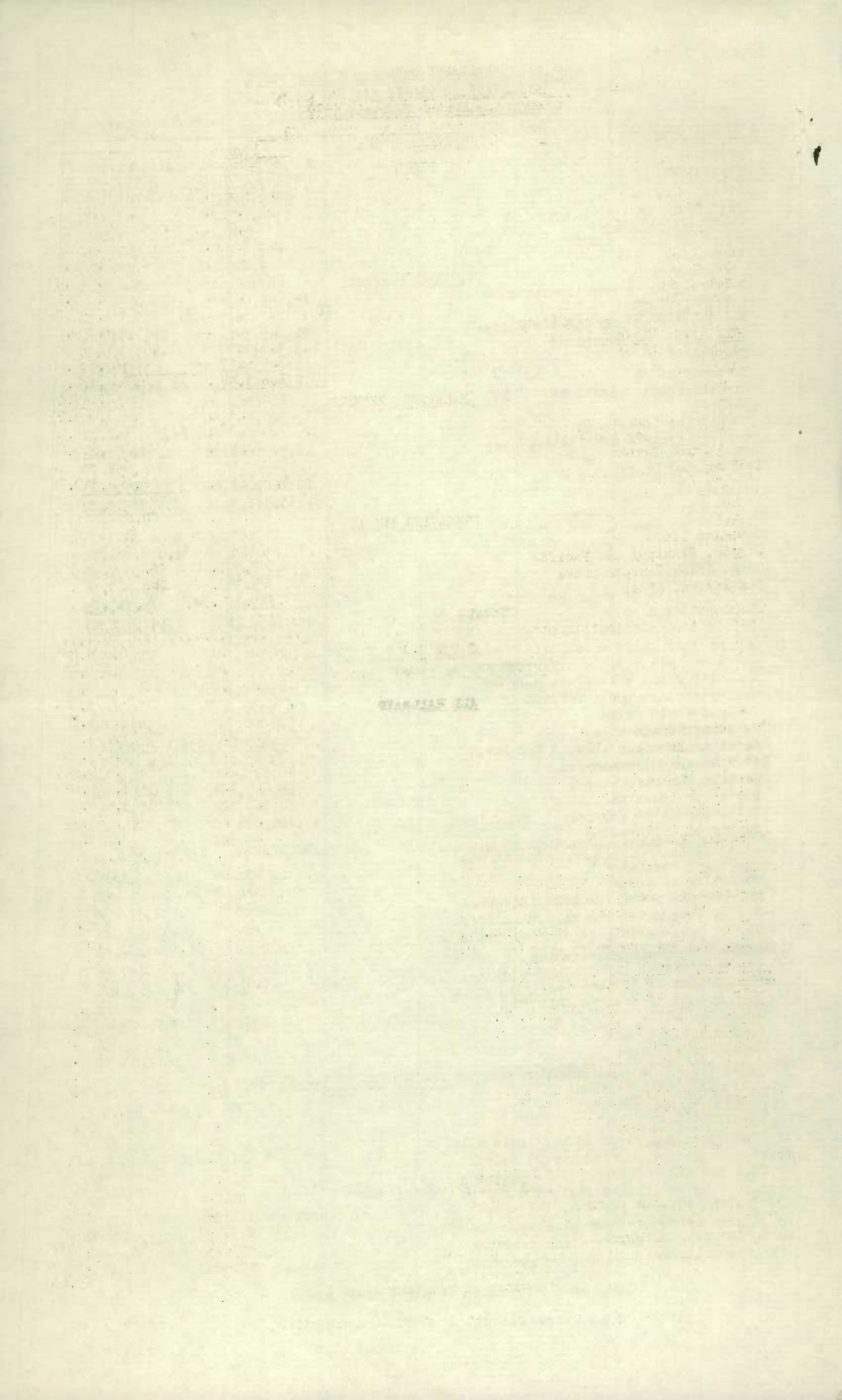
	1929	1928
<u>OPERATING REVENUES</u>		
Freight	\$12,076,113.73	\$12,297,028.74
Passenger	2,004,839.29	2,114,351.33
Mail	205,281.80	193,106.15
Express	841,776.48	799,257.59
Other freight train	--	--
Other passenger train	186,821.58	193,956.10
Water line	--	--
All other	798,188.99	706,945.04
Total railway operating revenues	16,113,021.87	16,304,644.95
<u>OPERATING EXPENSES</u>		
Maintenance of way and structures	\$2,058,206.60	\$2,159,611.32
Maintenance of equipment	3,425,485.14	3,239,589.58
Traffic	471,636.16	467,452.72
Transportation	7,331,545.99	7,358,687.28
Miscellaneous operations	135,290.99	134,704.25
General	446,074.02	441,215.06
Trans. for investment	Cr. 32,843.19	Cr. 46,556.08
Total railway operating expenses	13,835,395.71	13,754,704.13
<u>OPERATING INCOME</u>		
Net operating revenue	\$2,277,626.16	\$2,549,940.82
Railway tax accruals	238,199.74	254,278.79
Uncollectable revenues	299.49	738.02
Hire of equipment	Dr. 88,733.89	Cr. 113,307.79
Joint facilities rents	Cr. 7,007.78	Cr. 10,450.19
Operating income	1,957,400.82	2,418,681.99
<u>OPERATING STATISTICS</u>		
Average miles of road operated	18,021.29	17,795.66
No. of tons carried (Rev.Fr.)	3,913,022	3,885,784
No. of tons carried one mile " "	1,241,757.700	1,370,951.769
No. of tons carried one mile (All Fr.)	1,398,054.185	1,510,280.923
Gross ton miles, excl. of locomotive & tender	3,057,635.499	3,146,693.665
No. of revenue passengers carried	1,253,018	1,433,446
No. of rev. passengers carried one mile	69,610.285	71,817.163
# Freight train miles	2,267,831	2,317,473
# Passenger train miles	1,460,416	1,477,962
Total train miles (Rev. & Non Rev.)	3,820,507	3,925,614
Freight car miles-loaded	55,042,422	56,482,706
Freight car miles-empty	24,092,634	22,916,589
Passenger train car miles	9,564,673	9,620,938
Total amount of pay roll (Including Eastern Lines)	\$11,168,758	\$11,136,721
Number of employees " " "	88,757	87,127
<u>DAILY AVERAGES PER MILE OF ROAD OPERATED</u>		
Operating revenue	\$31.93	\$31.59
Operating expenses	\$27.42	\$26.65
No. of tons moved one mile (Rev.Fr.)	2,461	2,657
No. of tons moved one mile (All Fr.)	2,771	2,926
No. of rev. passengers carried one mile	138	139
<u>#AVERAGES PER FREIGHT TRAIN MILE</u>		
Freight Revenue	\$5.32	\$5.31
No. of tons of freight (Rev.Fr.)	547.6	591.6
No. of tons of freight (All Fr.)	616.5	651.7
Gross ton miles	1348.3	1357.8
Loaded freight cars	24.3	24.4
Empty freight cars	10.6	9.9
<u>#AVERAGES PER PASSENGER TRAIN MILE</u>		
Passenger train revenues	\$2.22	\$2.23
Passengers carried	47.7	48.6
Passenger cars	6.5	6.5
Average operating expenses per train mile	\$3.62	\$3.50
Average length of haul (Rev.Fr.) Miles	317.3	352.8
Average passenger journey Miles	55.6	50.1
Average tons per loaded freight car mile	25.4	26.7
Av. freight receipt per rev. ton mile	.973¢	.897¢
Av. passenger receipt per passenger per mile	2.880¢	2.944¢
x Ratio of pay roll to operating revenues	60.9%	60.5%
Ratio of operating expenses to revenues	85.86%	84.36%
x Revenue of Eastern Lines included to determine ratio.		
# Contains a proportion of mixed train miles.		

OPERATING REVENUES, EXPENSES & STATISTICSCANADIAN PACIFIC RAILWAY

For the month of February, 1929.

	1929	1928
<u>OPERATING REVENUES</u>		
Freight	\$10,803,869.91	\$11,261,629.17
Passenger	2,148,257.00	2,199,555.56
Mail	256,619.16	272,155.94
Express	444,665.87	443,792.64
Other freight train	598.14	4,936.66
Other passenger train	269,729.09	269,573.14
Water line	58,229.58	55,004.24
All other	627,121.13	548,451.72
Total railway operating revenues	14,609,089.88	15,055,099.07
<u>OPERATING EXPENSES</u>		
Maintenance of way and structures	\$1,839,321.42	\$1,729,767.39
Maintenance of equipment	3,362,807.70	3,377,662.66
Traffic	791,521.77	732,287.18
Transportation	6,040,356.30	5,917,964.09
Miscellaneous operations	214,090.67	187,909.22
General	300,943.40	299,500.24
Trans. for investment	-	-
Total railway operating expenses	12,549,041.26	12,245,090.78
<u>OPERATING INCOME</u>		
Net operating revenue	\$2,060,048.62	\$2,810,008.29
Railway tax accruals	303,193.32	287,552.66
Uncollectable revenues	-	-
Hire of equipment	Cr. 59,887.10	Cr. 84,138.38
Joint facilities rents	Dr. 25,369.98	Dr. 3,535.79
Operating income	1,791,372.42	2,603,058.22
<u>OPERATING STATISTICS</u>		
Average miles of road operated	14,417.1	14,170.2
No. of tons carried (Rev. Fr.)	2,793,822	2,775,281
No. of tons carried one mile " "	1,066,329,148	1,157,291,436
No. of tons carried one mile (All Fr.)	1,200,741,754	1,320,385,557
Gross ton miles, excl. of locomotive & tender	2,610,647,662	3,073,443,728
No. of revenue passengers carried	1,092,752	1,151,786
No. of revenue pass. carried one mile	73,339,585	76,169,353
# Freight train miles	2,206,793	2,290,500
# Passenger train miles	1,434,547	1,460,617
Total train miles (Rev. & Non Rev.)	3,684,369	3,816,078
Freight car miles-loaded	46,819,916	49,356,230
Freight car miles-empty	18,405,478	21,538,443
Passenger train car miles	10,269,801	10,419,954
Total amount of pay roll	\$7,806,076.02	\$7,470,815.57
Number of employees	59,188	56,758
<u>DAILY AVERAGES PER MILE OF ROAD OPERATED</u>		
Operating revenue	\$36.19	\$36.64
Operating expenses	\$31.09	\$29.80
No. of tons moved one mile (Rev. Fr.)	2,642	2,816
No. of tons moved one mile (All Fr.)	2,974	3,213
No. of rev. passengers carried one mile	182	185
<u>#AVERAGES PER FREIGHT TRAIN MILE</u>		
Freight revenue	\$4.90	\$4.92
No. of tons of freight (Rev. Fr.)	483.2	505.3
No. of tons of freight (All Fr.)	544.1	576.5
Gross ton miles	1183.0	1341.8
Loaded freight cars	21.2	21.5
Empty freight cars	8.3	9.4
<u>#AVERAGES PER PASSENGER TRAIN MILE</u>		
Passenger train revenues	\$2.17	\$2.18
Passengers carried	51.1	52.1
Passenger cars	7.2	7.1
Average operating expenses per train mile	\$3.41	\$3.21
Average length of haul (Rev. Fr.) Miles	381.7	417.0
Average passenger journey Miles	67.1	66.1
Average tons per loaded freight car mile	25.6	26.8
Av. freight receipt per rev. ton mile	1.013¢	.973¢
Av. passenger receipt per passenger per mile	2.929¢	2.888¢
Ratio of pay roll to operating revenues	53.4%	49.6%
Ratio of operating expenses to revenues	85.90%	81.34%

Contains a proportion of mixed train miles.



7
CANADIAN NATIONAL SYSTEM
 (Steam Lines in Canada and United States)
 For the Month of February, 1929

OPERATING REVENUES

	<u>1929</u>	<u>1928</u>
Canadian Lines	\$16,113,021.87	\$16,304,644.95
Duluth, Winnipeg and Pacific	216,067.00	251,642.00
Grand Trunk Western Lines	3,101,617.00	2,789,718.00
New England Lines	183,803.13	242,697.05
Total	<u>19,614,509.00</u>	<u>19,588,702.00</u>

OPERATING EXPENSES

Canadian Lines	\$13,835,395.71	\$13,754,704.13
Duluth, Winnipeg and Pacific	159,738.46	167,585.73
Grand Trunk Western Lines	1,998,616.44	1,965,059.30
New England Lines	185,070.93	233,142.12
Total	<u>16,178,821.54</u>	<u>16,120,491.28</u>

NET OPERATING REVENUE

Canadian Lines	\$2,277,626.16	\$2,549,940.82
Duluth, Winnipeg and Pacific	56,328.54	84,056.27
Grand Trunk Western Lines	1,103,000.56	824,658.70
New England Lines	Dr. 1,267.80	9,554.93
Total	<u>3,435,687.46</u>	<u>3,468,210.72</u>

OPERATING INCOME

Canadian Lines	\$1,957,400.82	\$2,418,681.99
Duluth, Winnipeg and Pacific	48,877.37	66,737.88
Grand Trunk Western Lines	727,713.78	445,960.78
New England Lines	Dr. 73,119.82	Dr. 79,767.85
Total	<u>2,660,872.15</u>	<u>2,851,612.80</u>

S U M M A R Y

For Two Months ended February

ALL RAILWAYS

	<u>1929</u>	<u>1928</u>
Operating Revenues	\$76,827,362.34	\$76,490,426.19
Operating Expenses	66,419,802.63	65,418,917.67
Net Operating Revenues	10,407,559.71	11,071,508.52
Operating Income	8,159,901.20	9,278,951.27

CANADIAN NATIONAL RAILWAYS

Operating Revenues - Canadian Lines	\$31,060,640.37	\$32,025,562.51
United States Lines	6,731,553.63	6,434,810.49
Total	<u>37,792,194.00</u>	<u>38,460,373.00</u>
Operating Expenses - Canadian Lines	27,545,728.08	27,851,313.35
United States Lines	4,726,037.81	4,819,837.86
Total	<u>32,271,765.89</u>	<u>32,671,151.21</u>
Net Operating Revenues - Canadian Lines	3,514,912.29	4,174,249.16
United States Lines	2,005,515.82	1,614,972.63
Total	<u>5,520,428.11</u>	<u>5,789,221.79</u>
Operating Income - Canadian Lines	2,843,831.65	3,748,399.35
United States Lines	1,157,524.97	675,536.03
Total	<u>4,001,356.62</u>	<u>4,423,935.38</u>

CANADIAN NATIONAL RAILWAYS-EASTERN LINES

Operating Revenues	\$4,418,724.00	\$4,062,695.07
Operating Expenses	5,150,083.42	4,817,941.01
Net Operating Revenue	Dr. 731,359.42	Dr. 755,245.94
Operating Income	Dr. 849,604.87	Dr. 839,653.74

CANADIAN PACIFIC RAILWAY

Operating Revenues	\$30,596,724.18	\$30,405,840.32
Operating Expenses	26,376,729.93	25,540,125.59
Net Operating Revenue	4,219,994.25	4,865,714.73
Operating Income	3,687,304.75	4,481,094.50

STATISTICS CANADA LIBRARY
BIBLIOTHÈQUE STATISTIQUE CANADA



1010703559