

52-003

Historical File Copy

JAN 8 1931
PROPERTY OF THE
LIBRARY.

C A N A D A

DEPARTMENT OF TRADE AND COMMERCE

DOMINION BUREAU OF STATISTICS

TRANSPORTATION BRANCH

OPERATING REVENUES EXPENSES & STATISTICS

of

RAILWAYS

With Annual Operating Revenues of \$500,000

For

OCTOBER

1930

♦ ♦ ♦

Published by Authority of the Hon. H. H. Stevens, M.P.,
Minister of Trade and Commerce

♦ ♦ ♦

OTTAWA

1931

DEPARTMENT OF THE INTERIOR
BUREAU OF LAND MANAGEMENT
STATISTICAL SECTION

RAILWAYS

With Annual Operating Statistics

REPORT

1910

Published by Authority of the Hon. H. H. Stewart, M. C.
Minister of the Interior

WASH.

11

DEPARTMENT OF TRADE AND COMMERCE
DOMINION BUREAU OF STATISTICS
TRANSPORTATION AND PUBLIC UTILITIES BRANCH
OTTAWA

Dominion Statistician, R.H. Coats, B.A., F.S.S., (Hon.), F.R.S.C.
Chief, Transportation & Public Utilities Branch, G.S. Wrong, B.Sc.

OPERATING REVENUES, EXPENSES & STATISTICS

STEAM RAILWAYS OF CANADA

WITH ANNUAL OPERATING REVENUES OF \$500,000

FOR THE MONTH OF OCTOBER, 1930

Gross revenues of Canadian railways for October amounted to \$42,092,633 which was a decrease from 1929 of \$7,432,672, or 15.1 per cent. Operating expenses amounting to \$30,684,677 were reduced by \$3,915,703, making a reduction in the net operating revenue of \$3,566,968. Freight traffic continued light, being 14.0 per cent below last year's, and passenger traffic was lighter by 21.2 per cent. The decrease in the pay roll was \$1,053,296, or 4.5 per cent, for a reduction of 4,658 in the number of employees.

For the ten months, January - October, gross revenues were \$381,474,326 and net revenues \$59,378,938, as against \$447,580,521 and \$83,830,488, respectively, in 1929, the decrease in the net revenue being \$24,451,550.

EASTERN LINES - CANADIAN NATIONAL RAILWAYS: Freight traffic decreased by 11.4 per cent but passenger traffic was heavier by 13.0 per cent. Gross revenues amounting to \$2,289,204 were less than in 1929 by \$345,452, or 13.1 per cent. With increases in maintenance of way and structures of \$31,126, in traffic of \$4,079 and in general expense of \$74,315 and a decrease in the credit for transportation for investment of \$7,023, the decrease in total operating expenses was only \$40,833, or 1.6 per cent. Net operating revenues showed a debit of \$228,780, as against a credit in 1929 of \$75,838, and the operating income was down by \$318,960.

For January - October, gross revenues amounted to \$24,174,733 and the operating income showed a debit of \$4,514,506, as against \$25,480,370 and a debit of \$3,412,078, respectively, in 1929.

CANADIAN NATIONAL RAILWAYS: With a decrease of 8.8 per cent in freight traffic and 26.0 per cent in passenger traffic, gross revenues declined by \$2,578,801, being the lightest since 1924 when the gross revenues in October, including the Eastern Lines, were \$19,839,351. Operating expenses were reduced by \$931,426, or 6.0 per cent, net operating revenues by \$1,647,374 and the operating income by \$1,526,753. The decrease in the pay roll, including Eastern Lines, was \$1,067,363, or 8.1 per cent, for a reduction in the number of employees of 5,965, or 6.0 per cent.

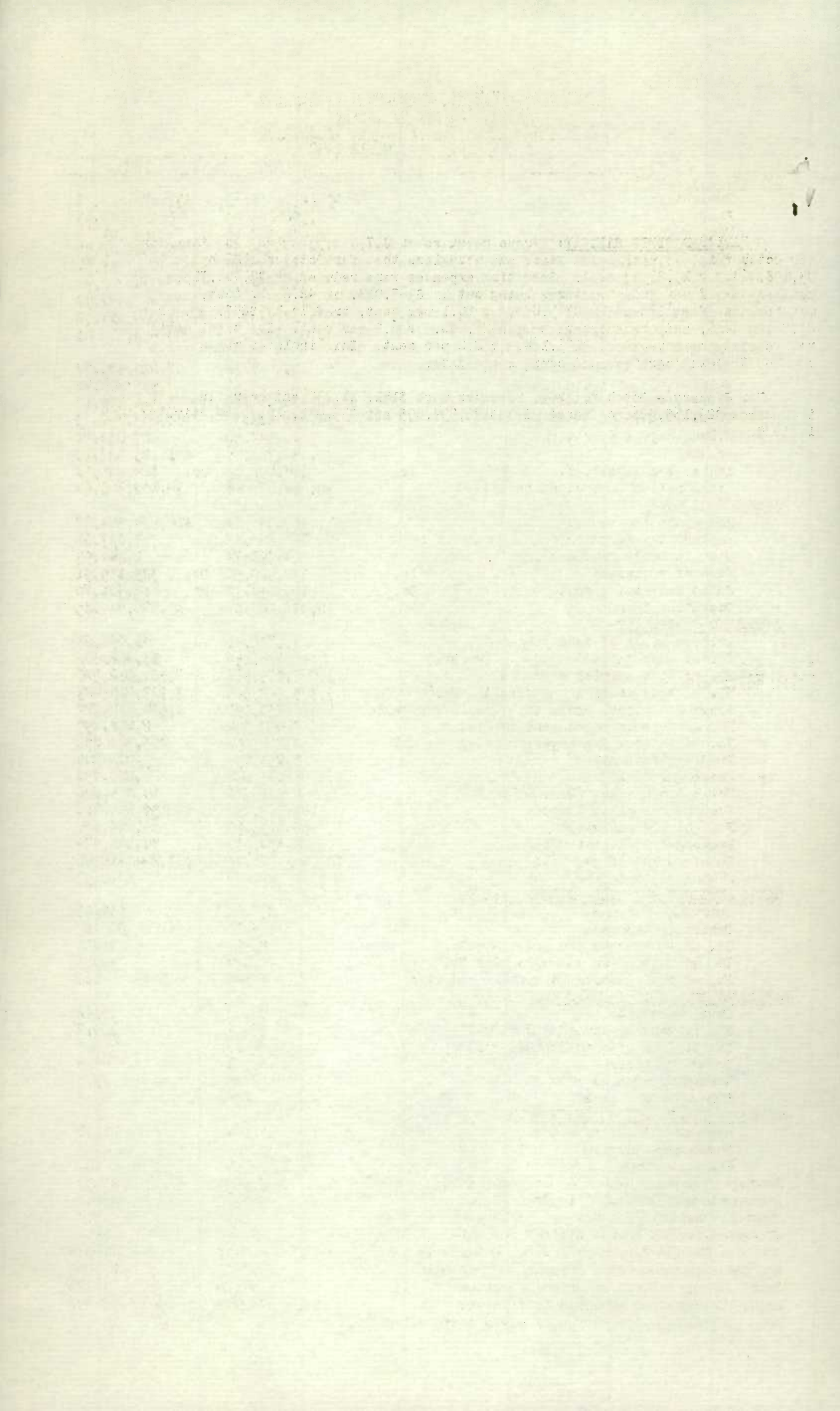
The lines in the United States also showed decreased gross revenues and operating expenses, the net revenue for the system (exclusive of Eastern Lines), being \$3,858,786, as against \$5,990,392 in 1929.

For January - October, the net operating revenues were: Canadian lines, \$18,962,376; United States lines, \$4,656,574; system, \$23,618,950; as against \$41,673,642 for the system in 1929.

CANADIAN PACIFIC RAILWAY: Gross revenues of \$17,032,553 were less than for any October in the past seven years and were less than for October 1929 by \$3,198,864, or 15.8 per cent. Operating expenses were reduced by \$2,433,715, maintenance of way and structures being cut by \$947,013, or 42.2 per cent, maintenance of equipment by \$795,850, or 28.1 per cent, traffic by \$257,339, or 29.3 per cent, and transportation by \$426,630, or 6.9 per cent. The total pay roll showed an increase of \$175,164, or 2.2 per cent. This includes wages charged to both operating and capital accounts.

For January - October, gross revenues were \$151,111,230 and operating income was \$29,165,526, compared with \$179,994,895 and \$35,441,626, respectively, in 1929.

550
30/12/30/GA



OPERATING REVENUES, EXPENSES & STATISTICS
STEAM RAILWAYS OF CANADA
WITH ANNUAL OPERATING REVENUES OF \$500,000
FOR THE MONTH OF OCTOBER, 1930

	1930	1929
<u>OPERATING REVENUES</u>		
Freight	\$32,277,555.63	\$37,879,477.72
Passenger	4,502,887.83	5,741,603.19
Mail	640,302.16	666,501.65
Express	1,742,505.28	1,988,301.55
Other freight train	3,677.64	4,758.94
Other passenger train	583,614.09	734,790.53
Water line	254,812.09	292,557.30
All other	2,087,278.76	2,266,814.70
Total railway operating revenues	42,092,633.48	49,575,305.61
<u>OPERATING EXPENSES</u>		
Maintenance of way and structures	\$6,251,442.32	\$7,024,309.77
Maintenance of equipment	6,227,469.59	7,583,205.41
Traffic	1,287,973.82	1,541,259.17
Transportation	15,439,328.30	17,003,796.75
Miscellaneous operations	411,544.50	487,038.70
General	1,251,711.36	1,125,527.12
Trans. for investment	Cr. 184,792.43	Cr. 164,805.98
Total railway operating expenses	30,684,677.46	34,600,380.94
<u>OPERATING INCOME</u>		
Net operating revenue	\$11,407,956.02	\$14,974,924.67
Railway tax accruals	760,280.17	757,897.66
Uncollectable revenues	4,992.74	1,544.95
Hire of equipment	Dr. 170,420.51	Dr. 323,135.51
Joint facilities rents	Dr. 100,139.77	Dr. 15,401.70
Operating income	10,372,122.83	13,876,944.85
<u>OPERATING STATISTICS</u>		
Average miles of road operated	41,742.41	41,052.25
No. of tons carried (Rev. Fr.)	10,916,159	13,402,802
No. of tons carried one mile " "	3,095,975,368	3,601,082,540
No. of tons carried one mile (All Fr.)	3,375,942,525	3,923,905,423
Gross ton miles, excl. of locomotive & tender	6,467,730,997	8,524,112,728
No. of revenue passengers carried	2,072,394	2,468,457
No. of revenue passengers carried one mile	162,220,156	205,764,896
# Freight train miles	5,233,099	5,901,200
# Passenger train miles	4,045,026	4,229,752
Total train miles (Rev. & Non Rev.)	9,511,770	10,375,826
Freight car miles-loaded	128,722,196	130,614,816
Freight car miles-empty	67,113,195	69,634,146
Passenger train car miles	28,858,435	31,101,974
Total amount of pay roll	\$22,191,186.75	\$23,244,482.91
Number of employees	167,099	171,757
<u>DAILY AVERAGES PER MILE OF ROAD OPERATED</u>		
Operating revenue	\$32.53	\$38.96
Operating expenses	\$23.71	\$27.19
No. of tons moved one mile (Rev. Fr.)	2,393	2,830
No. of tons moved one mile (All Fr.)	2,609	3,083
No. of rev. passengers carried one mile	125	162
<u># AVERAGES PER FREIGHT TRAIN MILE</u>		
Freight revenue	\$6.17	\$6.42
No. of tons of freight (Rev. Fr.)	591.6	610.2
No. of tons of freight (All Fr.)	645.1	664.9
Gross ton miles	147.0 1235.9	1444.5
Loaded freight cars	24.6	25.5
Empty freight cars	12.8	11.8
<u># AVERAGES PER PASSENGER TRAIN MILE</u>		
Passenger train revenues	\$1.85	\$2.16
Passengers carried	40.1	48.6
Passenger cars	7.1	7.4
Average operating expenses per train mile	\$3.23	\$3.33
Average length of haul (Rev. Fr.) Miles	283.6	268.7
Average passenger journey Miles	78.3	83.4
Average tons per loaded freight car mile	26.2	26.1
Average freight receipt per revenue ton mile	1.043¢	1.052¢
Av. passenger receipt per passenger per mile	2.776¢	2.790¢
Ratio of pay roll to operating revenues	52.7%	46.9%
Ratio of operating expenses to revenues	72.90%	69.79%
# - Contains a proportion of mixed train miles.		

OPERATING REVENUES, EXPENSES & STATISTICS

EASTERN LINES

CANADIAN NATIONAL RAILWAYS

FOR THE MONTH OF OCTOBER, 1930.

	1930	1929
<u>OPERATING REVENUES</u>		
Freight xx	\$1,523,021.00	\$1,914,929.00
Passenger	393,547.00	331,509.00
Mail	66,450.00	68,500.00
Express	154,000.00	177,332.66
Other freight train	-	-
Other passenger train	40,745.37	45,655.07
Water line	-	-
All other	111,440.63	96,730.27
Total railway operating revenues	2,289,204.00	2,634,656.00
<u>OPERATING EXPENSES</u>		
Maintenance of way and structures	\$581,732.61	\$550,606.24
Maintenance of equipment	402,845.82	451,296.63
Traffic	69,438.73	65,359.30
Transportation	1,247,510.68	1,351,938.22
Miscellaneous operations	27,524.43	32,023.58
General	195,497.52	121,182.16
Trans. for investment	Cr. 6,565.69	Cr. 13,588.71
Total railway operating expenses	2,517,984.10	2,558,817.42
<u>OPERATING INCOME</u>		
Net operating revenue	Dr. \$228,780.10	\$75,838.58
Railway tax accruals	27,798.44	23,727.12
Uncollectable revenues	137.11	Cr. 2.81
Hire of equipment	Dr. 43,191.58	Dr. 31,928.42
Joint facilities rents	Cr. 2,069.53	Cr. 937.30
Operating income	Dr. 297,837.70	21,123.15
<u>OPERATING STATISTICS</u>		
Average miles of road operated	3,342.49	3,333.28
No. of tons carried (Rev.Fr.)	568,384	705,391
No. of tons carried one mile " "	139,427,080	157,360,948
No. of tons carried one mile (All Fr.)	155,008,387	172,085,656
Gross ton miles, excl. of locomotive & tender	357,571,264	390,728,959
No. of revenue passengers carried	225,830	238,066
No. of revenue passengers carried one mile	16,668,600	14,747,580
# Freight train miles	359,132	394,176
# Passenger train miles	323,498	326,236
Total train miles (Rev. & Non Rev.)	705,171	740,180
Freight car miles-loaded	5,139,700	7,935,775
Freight car miles-empty	2,142,216	2,194,181
Passenger train car miles	2,090,611	2,203,009
Total amount of pay roll	(Included in Canadian Lines)	
Number of employees	" " "	" "
<u>DAILY AVERAGES PER MILE OF ROAD OPERATED</u>		
Operating revenue	\$22.09	\$25.50
Operating expenses	\$24.30	\$24.76
No. of tons moved one mile (Rev.Fr.)	1,346	1,523
No. of tons moved one mile (All Fr.)	1,496	1,665
No. of rev. passengers carried one mile	161	143
<u>#AVERAGES PER FREIGHT TRAIN MILE</u>		
Freight revenue	\$4.24	\$4.86
No. of tons of freight (Rev.Fr.)	388.2	399.2
No. of tons of freight (All Fr.)	431.6	436.6
Gross ton miles	995.7	991.3
Loaded freight cars	14.3	20.1
Empty freight cars	6.0	5.6
<u>#AVERAGES PER PASSENGER TRAIN MILE</u>		
Passenger train revenues	\$2.02	\$1.91
Passengers carried	51.5	45.2
Passenger cars	6.5	6.8
Average operating expenses per train mile	\$3.57	\$3.46
Average length of haul (Rev.Fr.) Miles	245.3	222.9
Average passenger journey Miles	73.8	61.9
Average tons per loaded freight car mile	30.2	21.7
Av. freight receipt per revenue ton mile	1.092¢	1.217¢
Av. passenger receipt per passenger per mile	2.361¢	2.248¢
Ratio of pay roll to operating revenues	(Included in Canadian Lines)	
Ratio of operating expenses to revenues	109.99%	97.12%
xx - Including account Maritime Freight Rates Act	\$221,000.00	\$251,518.00
# - Contains a proportion of mixed train miles.		

CONFIDENTIAL

1. The purpose of this document is to provide a comprehensive overview of the current status of the project and to identify the key areas that require further attention.

2. The project has been progressing well, with significant milestones achieved in the areas of research, development, and testing. However, there are several challenges that must be addressed in order to ensure the successful completion of the project.

3. The following table provides a summary of the project's progress and the key areas that require further attention:

Area	Progress	Key Areas Requiring Attention
Research	Completed 80% of the research phase.	Need to complete the remaining 20% of the research phase.
Development	Completed 60% of the development phase.	Need to complete the remaining 40% of the development phase.
Testing	Completed 40% of the testing phase.	Need to complete the remaining 60% of the testing phase.

4. The following table provides a summary of the project's budget and the key areas that require further attention:

Area	Budget	Key Areas Requiring Attention
Research	\$1,000,000	Need to complete the remaining 20% of the research phase.
Development	\$2,000,000	Need to complete the remaining 40% of the development phase.
Testing	\$1,000,000	Need to complete the remaining 60% of the testing phase.

5. The following table provides a summary of the project's schedule and the key areas that require further attention:

Area	Schedule	Key Areas Requiring Attention
Research	Completed 80% of the research phase.	Need to complete the remaining 20% of the research phase.
Development	Completed 60% of the development phase.	Need to complete the remaining 40% of the development phase.
Testing	Completed 40% of the testing phase.	Need to complete the remaining 60% of the testing phase.

6. The following table provides a summary of the project's resources and the key areas that require further attention:

Area	Resources	Key Areas Requiring Attention
Research	10 researchers	Need to complete the remaining 20% of the research phase.
Development	20 developers	Need to complete the remaining 40% of the development phase.
Testing	10 testers	Need to complete the remaining 60% of the testing phase.

7. The following table provides a summary of the project's risks and the key areas that require further attention:

Area	Risks	Key Areas Requiring Attention
Research	Low risk	Need to complete the remaining 20% of the research phase.
Development	Medium risk	Need to complete the remaining 40% of the development phase.
Testing	High risk	Need to complete the remaining 60% of the testing phase.

8. The following table provides a summary of the project's conclusions and the key areas that require further attention:

Area	Conclusions	Key Areas Requiring Attention
Research	Completed 80% of the research phase.	Need to complete the remaining 20% of the research phase.
Development	Completed 60% of the development phase.	Need to complete the remaining 40% of the development phase.
Testing	Completed 40% of the testing phase.	Need to complete the remaining 60% of the testing phase.

9. The following table provides a summary of the project's recommendations and the key areas that require further attention:

Area	Recommendations	Key Areas Requiring Attention
Research	Need to complete the remaining 20% of the research phase.	Need to complete the remaining 20% of the research phase.
Development	Need to complete the remaining 40% of the development phase.	Need to complete the remaining 40% of the development phase.
Testing	Need to complete the remaining 60% of the testing phase.	Need to complete the remaining 60% of the testing phase.

10. The following table provides a summary of the project's final status and the key areas that require further attention:

Area	Final Status	Key Areas Requiring Attention
Research	Completed 80% of the research phase.	Need to complete the remaining 20% of the research phase.
Development	Completed 60% of the development phase.	Need to complete the remaining 40% of the development phase.
Testing	Completed 40% of the testing phase.	Need to complete the remaining 60% of the testing phase.

OPERATING REVENUES, EXPENSES & STATISTICS
CANADIAN NATIONAL RAILWAYS
FOR THE MONTH OF OCTOBER, 1930.

	1930	1929
<u>OPERATING REVENUES</u>		
Freight	\$13,978,598.04	\$15,652,709.08
Passenger	1,595,381.32	2,157,845.25
Mail	206,321.25	207,512.17
Express	955,015.18	1,032,884.41
Other freight train	552.48	1,520.00
Other passenger train	212,422.44	272,077.17
Water line	-	-
All other	989,307.57	1,191,852.00
Total railway operating revenues	17,937,598.28	20,516,400.08
<u>OPERATING EXPENSES</u>		
Maintenance of way and structures	\$3,536,997.20	\$3,394,724.79
Maintenance of equipment	3,058,906.06	3,331,725.43
Traffic	508,200.15	504,609.55
Transportation	6,819,470.77	7,697,637.95
Miscellaneous operations	139,534.90	165,742.24
General	606,953.56	503,555.27
Trans. for investment	Cr. 151,355.31	Cr. 147,861.12
Total railway operating expenses	14,518,707.33	15,450,134.16
<u>OPERATING INCOME</u>		
Net operating revenue	\$3,418,890.95	\$5,066,265.92
Railway tax accruals	282,442.18	267,557.46
Uncollectable revenues	4,376.51	1,446.63
Hire of equipment	Cr. 63,150.31	Dr. 64,171.93
Joint facilities rents	Cr. 1,484.73	Dr. 9,628.95
Operating income	3,196,707.30	4,723,460.95
<u>OPERATING STATISTICS</u>		
Average miles of road operated	18,584.91	18,239.42
No. of tons carried (Rev.Fr.)	4,061,977	4,970,668
No. of tons carried one mile " "	1,314,159,337	1,441,734,529
No. of tons carried one mile (All Fr.)	1,445,672,190	1,598,276,489
Gross ton miles, excl. of locomotive & tender	3,277,677,167	3,566,486,027
No. of revenue passengers carried	818,896	1,034,546
No. of revenue pass. carried one mile	61,221,488	82,722,446
# Freight train miles	2,094,315	2,357,704
# Passenger train miles	1,623,419	1,781,149
Total train miles (Rev. & Non Rev.)	3,827,239	4,292,814
Freight car miles-loaded	57,565,113	63,654,345
Freight car miles-empty	30,210,146	29,065,424
Passenger train car miles	11,032,062	12,377,759
Total amount of pay roll (Including Eastern Lines)	\$12,185,038	\$13,252,401
Number of employees " " "	93,049	99,014
<u>DAILY AVERAGES PER MILE OF ROAD OPERATED</u>		
Operating revenue	\$31.13	\$36.29
Operating expenses	\$25.20	\$27.32
No. of tons moved one mile (Rev.Fr.)	2,281	2,550
No. of tons moved one mile (All Fr.)	2,509	2,827
No. of rev. passengers carried one mile	106	146
<u>#AVERAGES PER FREIGHT TRAIN MILE</u>		
Freight revenue	\$6.67	\$6.64
No. of tons of freight (Rev.Fr.)	627.5	611.5
No. of tons of freight (All Fr.)	690.3	677.9
Gross ton miles	1565.0	1512.7
Loaded freight cars	27.5	27.0
Empty freight cars	14.4	12.3
<u>#AVERAGES PER PASSENGER TRAIN MILE</u>		
Passenger train revenues	\$1.83	\$2.06
Passengers carried	37.7	46.4
Passenger cars	6.8	6.9
Average operating expenses per train mile	\$3.79	\$3.60
Average length of haul (Rev.Fr.) Miles	323.5	290.0
Average passenger journey Miles	74.8	80.0
Average tons per loaded freight car mile	25.1	25.1
Average freight receipt per rev. ton mile	1.064¢	1.086¢
Average passenger receipt per passenger per mile	2.606¢	2.609¢
xRatio of pay roll to operating revenues	60.2%	57.2%
Ratio of operating expenses to revenues	80.94%	75.31%

x - Revenue of Eastern Lines included to determine ratio.

- Contains a proportion of mixed train miles.

THE UNIVERSITY OF CHICAGO
LIBRARY

THE UNIVERSITY OF CHICAGO
LIBRARY
1215 EAST 58TH STREET
CHICAGO, ILL. 60637
TEL. 773-936-5000
FAX 773-936-5001
WWW.CHICAGO.EDU
LIBRARY@CHICAGO.EDU

Subject to Revision

OPERATING REVENUES, EXPENSES & STATISTICS

CANADIAN PACIFIC RAILWAY

For the Month of October, 1930

	1929	1930
<u>OPERATING REVENUES</u>		
Freight	\$13,152,293.15	\$15,644,657.12
Passenger	1,858,341.08	2,419,337.28
Mail	312,492.79	322,930.62
Express	443,462.16	481,871.39
Other freight train	2,901.06	2,848.68
Other passenger train	302,816.22	379,158.15
Water line	217,392.65	262,766.15
All other	792,859.47	767,853.42
Total railway operating revenues	17,082,558.58	20,281,422.81
<u>OPERATING EXPENSES</u>		
Maintenance of way and structures	\$1,299,260.39	\$2,246,274.17
Maintenance of equipment	2,037,582.46	2,833,433.16
Traffic	620,356.01	877,695.23
Transportation	5,801,258.10	6,227,938.18
Miscellaneous operations	183,334.73	219,920.14
General	288,216.34	313,462.16
Trans. for investment	Cr. -	-
Total railway operating expenses	10,230,008.03	12,718,723.04
<u>OPERATING INCOME</u>		
Net operating revenue	\$6,852,550.55	\$7,562,699.77
Railway tax accruals	328,962.74	338,479.84
Uncollectable revenues	-	-
Hire of equipment	Cr. 88,523.04	Cr. 62,073.62
Joint facilities rents	Dr. 58,018.36	Cr. 23,543.21
Operating income	6,554,092.49	7,309,836.76
<u>OPERATING STATISTICS</u>		
Average miles of road operated	15,064.8	14,782.4
No. of tons carried (Rev. Fr.)	3,313,995	3,970,245
No. of tons carried one mile " "	1,375,448,639	1,660,912,696
No. of tons carried one mile (All Fr.)	1,497,956,207	1,803,592,260
Gross ton miles, excl. of locomotive & tender	2,050,452,252	3,647,812,580
No. of revenue passengers carried	718,218	817,208
No. of revenue pass. carried one mile	62,676,794	81,149,139
# Freight train miles	2,161,188	2,457,036
# Passenger train miles	1,620,088	1,612,142
Total train miles (Rev. & Non Rev.)	3,855,316	4,117,673
Freight car miles-loaded	51,617,296	61,498,384
Freight car miles-empty	26,085,823	29,369,456
Passenger train car miles	11,926,586	12,339,259
Total amount of pay roll	\$8,191,471.22	\$8,016,306.28
Number of employees	60,810	58,785
<u>DAILY AVERAGES PER MILE OF ROAD OPERATED</u>		
Operating revenue	\$36.58	\$44.26
Operating expenses	\$21.91	\$27.75
No. of tons moved one mile (Rev. Fr.)	2,945	3,624
No. of tons moved one mile (All Fr.)	3,208	3,936
No. of rev. passengers carried one mile	134	177
<u>#AVERAGES PER FREIGHT TRAIN MILE</u>		
Freight revenue	\$6.09	\$6.37
No. of tons of freight (Rev. Fr.)	636.4	676.0
No. of tons of freight (All Fr.)	693.1	734.1
Gross ton miles	948.8	1484.6
Loaded freight cars	23.9	25.0
Empty freight cars	12.1	12.0
<u>#AVERAGES PER PASSENGER TRAIN MILE</u>		
Passenger train revenues	\$1.80	\$2.24
Passengers carried	38.7	50.3
Passenger cars	7.4	7.7
Average operating expenses per train mile	\$2.65	\$3.09
Average length of haul (Rev. Fr.) Miles	415.0	418.3
Average passenger journey Miles	87.3	99.3
Average tons per loaded freight car mile	29.0	29.3
Av. freight receipt per revenue ton mile	.956¢	.942¢
Av. passenger receipt per passenger per mile	2.965¢	2.981¢
Ratio of pay roll to operating revenues	48.0%	39.5%
Ratio of operating expenses to revenues	59.89%	62.71%

Contains a proportion of mixed train miles.

11. 1910	12. 1910	13. 1910	14. 1910	15. 1910	16. 1910	17. 1910	18. 1910	19. 1910	20. 1910	21. 1910	22. 1910	23. 1910	24. 1910	25. 1910	26. 1910	27. 1910	28. 1910	29. 1910	30. 1910	31. 1910	32. 1910	33. 1910	34. 1910	35. 1910	36. 1910	37. 1910	38. 1910	39. 1910	40. 1910	41. 1910	42. 1910	43. 1910	44. 1910	45. 1910	46. 1910	47. 1910	48. 1910	49. 1910	50. 1910	51. 1910	52. 1910	53. 1910	54. 1910	55. 1910	56. 1910	57. 1910	58. 1910	59. 1910	60. 1910	61. 1910	62. 1910	63. 1910	64. 1910	65. 1910	66. 1910	67. 1910	68. 1910	69. 1910	70. 1910	71. 1910	72. 1910	73. 1910	74. 1910	75. 1910	76. 1910	77. 1910	78. 1910	79. 1910	80. 1910	81. 1910	82. 1910	83. 1910	84. 1910	85. 1910	86. 1910	87. 1910	88. 1910	89. 1910	90. 1910	91. 1910	92. 1910	93. 1910	94. 1910	95. 1910	96. 1910	97. 1910	98. 1910	99. 1910	100. 1910
----------	----------	----------	----------	----------	----------	----------	----------	----------	----------	----------	----------	----------	----------	----------	----------	----------	----------	----------	----------	----------	----------	----------	----------	----------	----------	----------	----------	----------	----------	----------	----------	----------	----------	----------	----------	----------	----------	----------	----------	----------	----------	----------	----------	----------	----------	----------	----------	----------	----------	----------	----------	----------	----------	----------	----------	----------	----------	----------	----------	----------	----------	----------	----------	----------	----------	----------	----------	----------	----------	----------	----------	----------	----------	----------	----------	----------	----------	----------	----------	----------	----------	----------	----------	----------	----------	----------	----------	----------	-----------

- 7 -
CANADIAN NATIONAL RAILWAYS
 (Steam Lines in Canada & United States)
 FOR THE MONTH OF OCTOBER, 1930

OPERATING REVENUES

	1930	1929
Canadian Lines	\$17,937,598.28	\$20,516,400.08
Duluth, Winnipeg & Pacific	136,595.00	202,252.00
Grand Trunk Western	2,004,822.00	3,079,162.00
New England Lines	172,935.72	181,612.92
Central Vermont Railway	635,095.00	751,684.00
Total	<u>20,887,053.00</u>	<u>24,731,111.00</u>

OPERATING EXPENSES

Canadian Lines	\$14,518,707.33	\$15,450,134.16
Duluth, Winnipeg & Pacific	143,706.04	164,291.54
Grand Trunk Western	1,684,160.44	2,301,567.24
New England Lines	176,717.24	233,918.75
Central Vermont Railway	499,975.83	585,306.66
Total	<u>17,023,266.88</u>	<u>18,740,718.35</u>

NET OPERATING REVENUE

Canadian Lines	\$3,418,890.95	\$5,066,265.92
Duluth, Winnipeg & Pacific	Dr. 12,111.04	37,960.46
Grand Trunk Western	320,667.56	777,594.76
New England Lines	Dr. 3,781.52	Dr. 57,305.83
Central Vermont Railway	135,120.17	165,877.34
Total	<u>3,898,736.12</u>	<u>5,990,392.65</u>

OPERATING INCOME

Canadian Lines	\$3,196,707.30	\$4,723,460.95
Duluth, Winnipeg & Pacific	Dr. 6,405.74	20,118.95
Grand Trunk Western	1,700.70	402,413.93
New England Lines	Dr. 53,393.17	Dr. 123,553.09
Central Vermont Railway	130,841.52	164,193.76
Total	<u>3,264,450.61</u>	<u>5,136,634.50</u>

S U M M A R Y
 For Ten Months ended October 31st

ALL RAILWAYS

	1930	1929
Operating Revenues	\$381,474,326.74	\$447,680,521.48
Operating Expenses	322,095,333.52	363,350,032.30
Net Operating Revenue	59,378,933.22	83,830,488.68
Operating Income	49,379,665.88	72,815,436.41

CANADIAN NATIONAL RAILWAYS

Operating Revenues - Canadian Lines	\$157,430,092.97	\$183,350,703.66
# United States Lines	31,844,025.03	44,210,530.34
Total	<u>189,274,118.00</u>	<u>227,561,234.00</u>
Operating Expenses - Canadian Lines	133,467,716.93	153,794,258.97
# United States Lines	27,187,450.60	32,033,332.98
Total	<u>165,655,167.53</u>	<u>185,827,591.95</u>
Net Operating Revenue - Canadian Lines	18,962,375.04	29,556,444.69
# United States Lines	4,656,574.43	12,117,197.36
Total	<u>23,618,950.47</u>	<u>41,673,642.05</u>
Operating Income - Canadian Lines	16,861,430.36	26,479,311.43
# United States Lines	653,340.55	6,987,642.43
Total	<u>17,514,820.91</u>	<u>33,466,953.86</u>

CANADIAN NATIONAL RAILWAYS - EASTERN LINES

Operating Revenues	\$24,174,733.00	\$25,480,370.00
Operating Expenses	28,119,973.59	28,328,369.64
Net Operating Revenue	Dr. 3,945,240.59	Dr. 2,947,999.64
Operating Income	Dr. 4,614,506.32	Dr. 3,412,073.31

CANADIAN PACIFIC RAILWAY

Operating Revenue	\$151,111,230.00	\$179,994,895.05
Operating Expenses	119,275,398.73	141,885,055.06
Net Operating Revenue	31,835,831.27	38,109,839.99
Operating Income	<u>29,165,526.09</u>	<u>35,441,626.09</u>

- Including Central Vermont Railway.

STATISTICS CANADA LIBRARY
BIBLIOTHÈQUE STATISTIQUE CANADA



1010703555