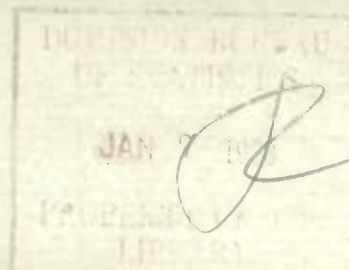


52 003

Historical File Copy



CANADA

DEPARTMENT OF TRADE AND COMMERCE

DOMINION BUREAU OF STATISTICS

TRANSPORTATION BRANCH

OPERATING REVENUES EXPENSES & STATISTICS

of

RAILWAYS

With Annual Operating Revenues of \$500,000

For

OCTOBER

1932

+++

Published by Authority of the Hon. H.H. Stevens, M.P.,
Minister of Trade and Commerce

+++

OTTAWA

1932

Historical Life Copy

1873

DEPARTMENT OF TRADE AND COMMERCE
DOMINION BUREAU OF STATISTICS
TRANSPORTATION AND PUBLIC UTILITIES BRANCH
OTTAWA

Dominion Statistician, R.H. Coats, B.A., F.S.S., (Hon.), F.R.S.C.
Chief, Transportation and Public Utilities Branch, G.S. Wrong, B.Sc.

OPERATING REVENUES, EXPENSES & STATISTICS

STEAM RAILWAYS OF CANADA

WITH ANNUAL OPERATING REVENUES OF \$500,000

FOR THE MONTH OF OCTOBER, 1932

The heavy grain movement of September was carried over into October, but the total freight carried by Canadian railways was less than in October last year and also less than in September this year although October has generally been the peak month for freight traffic, gross and net revenues. Gross revenues amounting to \$28,190,356 were less than in 1931 by \$4,184,887 and, with operating expenses cut by \$4,411,265, net operating revenues increased from \$7,125,127 to \$7,351,506. For January - October gross revenues amounted to \$244,753,718 in 1932 and \$295,952,963 in 1931, operating expenses were \$216,545,580 in 1932 and \$270,687,115 in 1931, producing an operating income of \$19,386,034 in 1932 and \$16,547,881 in 1931.

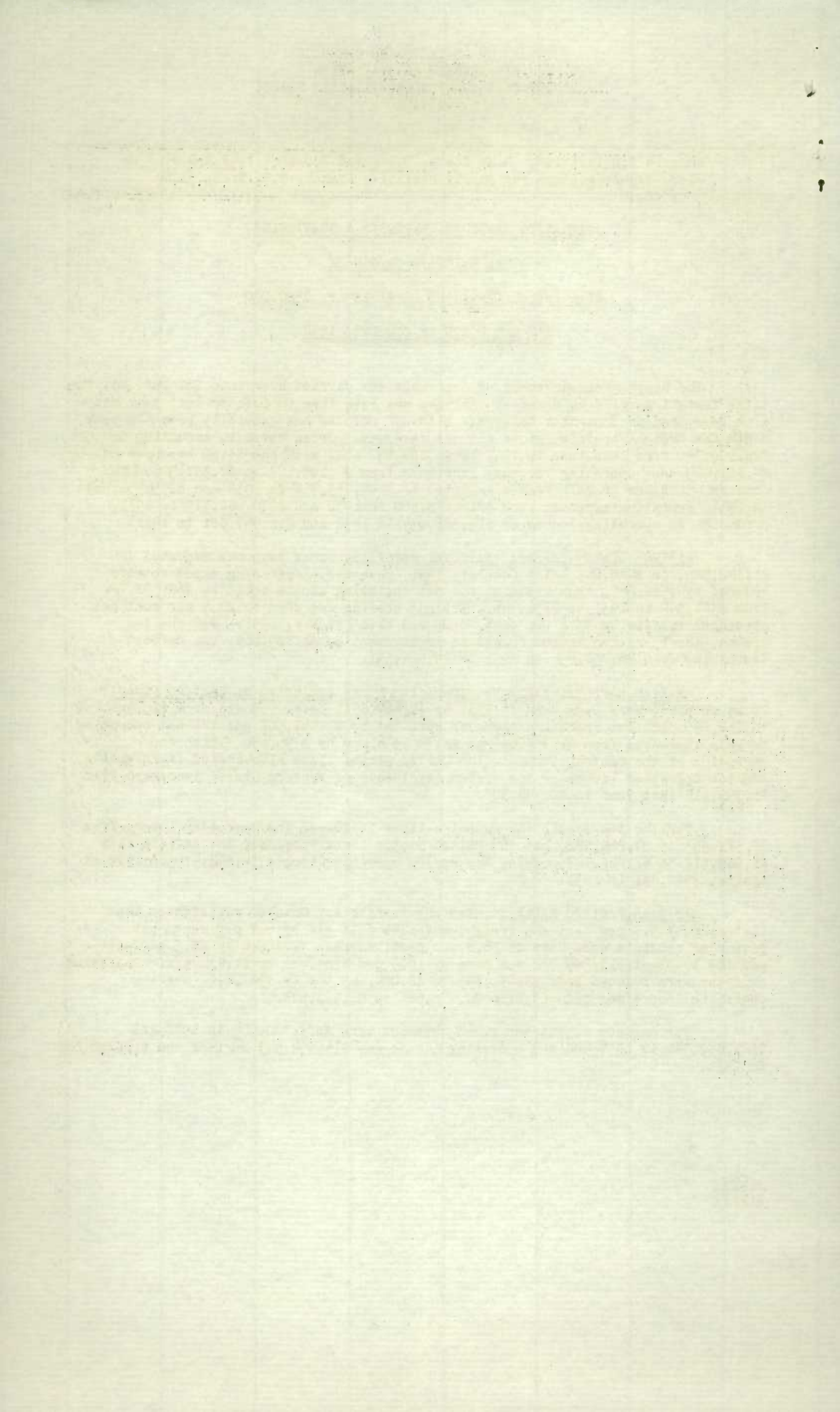
EASTERN LINES--CANADIAN NATIONAL RAILWAYS: Gross revenues amounted to \$1,342,085, or \$444,069 below October, 1931, revenues. Operating expenses were reduced by \$512,667, thus reducing the net operating income debit by \$68,598, or from \$301,344 in 1931 to \$232,746. Freight traffic was down by 26.5 per cent and passenger traffic by 33.8 per cent, compared with October, 1931. For the ten months, the operating income showed an improvement of \$1,889,065, the deficit decreasing from \$6,790,656 in 1931 to \$4,901,591.

CANADIAN NATIONAL RAILWAYS- (Canadian Lines exclusive of Eastern Lines): Gross revenues were less than in 1931 by \$1,664,851, being reduced from \$13,964,163 to \$12,299,312, but operating expenses were cut by \$2,461,501 and the net operating revenue increased from \$1,968,685 to \$2,765,336, or by \$796,650. With the exception of the Central Vermont, the United States lines also showed improvements and the operating income of the system (exclusive of Eastern Lines) increased from \$1,395,318 last year to \$2,453,303.

For the ten months the Canadian lines increased the operating income from \$2,511,993 to \$7,269,582, but the United States lines increased the deficit from \$1,989,512 to \$2,421,107, making the system operating income \$4,848,475 in 1932 as against \$522,481 in 1931.

CANADIAN PACIFIC RAILWAY: Freight traffic for October was lighter than last year by 5.8 per cent and freight revenues fell off by 6.7 per cent, but passenger receipts were down by 16.8 per cent, express revenues by 20.3 per cent and the total of \$12,289,722 was down by 10.5 per cent, or by \$1,434,571. Operating expenses were reduced from \$8,931,853 to \$8,004,563, or by \$927,290, and the operating income was reduced from \$4,476,662 to \$3,923,573.

For January to October gross revenues were \$103,300,506 in 1932 and \$121,889,341 in 1931 and the operating income was \$14,454,943 in 1932 and \$17,268,829 in 1931.



OPERATING REVENUES, EXPENSES, & STATISTICS
STEAM RAILWAYS OF CANADA
WITH ANNUAL OPERATING REVENUES OF \$500,000
For the Month of October, 1932

	1932	1931
<u>OPERATING REVENUES</u>		
Freight	\$22,802,383.33	\$25,307,684.98
Passenger	2,398,167.58	3,087,099.22
Mail	568,489.01	616,918.59
Express	987,125.29	1,215,020.32
Other freight train	766.44	1,333.69
Other passenger train	318,505.33	410,954.77
Water line	194,205.85	157,880.95
All other	920,712.83	1,578,349.96
Total railway operating revenues	28,190,355.66	32,375,242.48
<u>OPERATING EXPENSES</u>		
Maintenance of way and structures	\$4,403,111.90	\$4,943,969.49
Maintenance of equipment	3,491,557.76	4,553,490.90
Traffic	966,708.91	1,377,545.06
Transportation	10,914,437.60	13,209,649.24
Miscellaneous operations	218,425.19	318,763.06
General	888,109.69	1,000,389.94
Trans. for investment	Cr. 43,500.89	Cr. 153,692.64
Total railway operating expenses	20,838,850.16	25,250,115.05
<u>OPERATING INCOME</u>		
Net operating revenue	\$7,351,505.50	\$7,125,127.43
Railway tax accruals	718,654.45	789,399.32
Uncollectable revenues	26,712.51	3,408.12
Hire of equipment	Dr. 148,986.11	Dr. 103,927.89
Joint facilities rents	Dr. 71,874.81	Dr. 43,231.15
Operating income	6,385,277.62	6,185,160.95
<u>OPERATING STATISTICS</u>		
Average miles of road operated	42,323.29	42,041.40
No. of tons carried (Rev.Fr.)	6,818,244	8,172,213
No. of tons carried one mile " "	2,607,160,393	2,927,998,357
No. of tons carried one mile (All Fr.)	2,799,169,856	3,122,634,374
Gross ton miles, excl. of locomotive & tender	6,307,479,314	7,053,512,259
No. of revenue passengers carried	1,238,642	1,581,196
No. of revenue passengers carried one mile	96,439,656	112,546,560
# Freight train miles	4,231,171	4,795,162
# Passenger train miles	3,048,659	3,500,143
Total train miles (Rev. & Non Rev.)	7,365,904	8,439,849
Freight car miles-loaded	101,029,522	115,220,350
Freight car miles-empty	59,007,522	66,069,776
Passenger train car miles	21,383,640	24,738,175
Total amount of pay roll	\$13,873,946.91	\$17,191,260.31
Number of employees	118,476	133,234
<u>DAILY AVERAGES PER MILE OF ROAD OPERATED</u>		
Operating revenue	\$21.49	\$24.84
Operating expenses	\$15.88	\$19.37
No. of tons moved one mile (Rev.Fr.)	1,987	2,247
No. of tons moved one mile (All Fr.)	2,133	2,396
No. of rev. passengers carried one mile	74	86
<u>#AVERAGES PER FREIGHT TRAIN MILE</u>		
Freight revenue	\$5.39	\$5.28
No. of tons of freight (Rev.Fr.)	616.2	610.6
No. of tons of freight (All Fr.)	661.6	651.2
Gross ton miles	1490.7	1471.0
Loaded freight cars	23.9	24.0
Empty freight cars	13.9	13.8
<u>#AVERAGES PER PASSENGER TRAIN MILE</u>		
Passenger train revenues	\$1.40	\$1.52
Passengers carried	31.6	32.2
Passenger cars	7.0	7.1
Average operating expenses per train mile	\$2.83	\$2.99
Average length of haul (Rev.Fr.) Miles	382.4	358.3
Average passenger journey Miles	77.9	71.2
Average tons per loaded freight car mile	27.7	27.1
Average freight receipt per revenue ton mile	.875¢	.864¢
Average passenger receipt per passenger per mile	2.487¢	2.743¢
Ratio of pay roll to operating revenues	49.2%	53.1%
Ratio of operating expenses to revenues	73.92%	77.99%
# - Contains a proportion of mixed train miles.		

OPERATING REVENUES, EXPENSES & STATISTICS

EASTERN LINES

CANADIAN NATIONAL RAILWAYS

For the Month of October, 1932

	1932	1931
<u>OPERATING REVENUES</u>		
Freight xx	\$942,041.00	\$1,204,045.00
Passenger	158,860.00	273,722.00
Mail	60,734.00	66,810.00
Express	98,110.00	127,967.00
Other freight train		100.00
Other passenger train	19,765.54	24,393.65
Water line		
All other	62,574.46	89,116.35
Total railway operating revenues	1,342,085.00	1,786,154.00
<u>OPERATING EXPENSES</u>		
Maintenance of way and structures	\$353,288.00	\$399,257.17
Maintenance of equipment	208,126.00	441,313.48
Traffic	49,494.56	61,193.81
Transportation	821,097.27	1,036,843.89
Miscellaneous operations	14,656.56	22,609.31
General	133,215.29	128,767.04
Trans. for investment	Cr. 5,046.20	Cr. 2,485.74
Total railway operating expenses	1,574,831.48	2,087,498.96
<u>OPERATING INCOME</u>		
Net operating revenue	Dr. \$232,746.48	Dr. \$301,344.96
Railway tax accruals	25,556.51	24,924.44
Uncollectable revenues	162.53	145.00
Hire of equipment	Dr. 85,738.98	Dr. 62,723.00
Joint facilities rents	Cr. 1,145.67	Cr. 1,559.86
Operating income	Dr. 343,058.83	Dr. 387,577.54
<u>OPERATING STATISTICS</u>		
Average miles of road operated	\$3,342.37	\$3,342.39
No. of tons carried (Rev. Fr.)	301,803	419,347
No. of tons carried one mile " "	75,485.115	102,727,844
No. of tons carried one mile (All Fr.)	84,226,606	110,697,865
Gross ton miles, excl. of locomotive & tender	211,323,799	266,740,670
No. of revenue passengers carried	107,541	179,040
No. of revenue passengers carried one mile	7,041,575	10,632,359
# Freight train miles	216,803	274,581
# Passenger train miles	230,457	284,261
Total train miles (Rev. & Non Rev.)	453,229	563,154
Freight car miles-loaded	4,231,842	5,363,545
Freight car miles-empty	1,413,141	1,723,199
Passenger train car miles	1,557,007	1,843,084
Total amount of pay roll	\$1,015,388	1,314,465
Number of employees	9,498	11,132
<u>DAILY AVERAGES PER MILE OF ROAD OPERATED</u>		
Operating revenue	\$12.95	\$17.24
Operating expenses	\$15.20	\$20.15
No. of tons moved one mile (Rev. Fr.)	729	991
No. of tons moved one mile (All Fr.)	813	1,068
No. of rev. passengers carried one mile	68	103
<u>#AVERAGES PER FREIGHT TRAIN MILE</u>		
Freight revenue	\$4.35	\$4.39
No. of tons of freight (Rev. Fr.)	348.2	374.1
No. of tons of freight (All Fr.)	388.5	403.1
Gross ton miles	974.7	971.4
Loaded freight cars	19.5	19.5
Empty freight cars	6.5	6.3
<u>#AVERAGES PER PASSENGER TRAIN MILE</u>		
Passenger train revenues	\$1.46	\$1.73
Passengers carried	30.6	37.4
Passenger cars	6.8	6.5
Average operating expenses per train mile	\$3.47	\$3.71
Average length of haul (Rev. Fr.) Miles	250.1	245.0
Average passenger journey Miles	65.5	59.4
Average tons per loaded freight car mile	19.9	20.6
Average freight receipt per revenue ton mile	1.248¢	1.172¢
Average passenger receipt per passenger per mile	2.256¢	2.574¢
Ratio of pay roll to operating revenues	75.7%	73.6%
Ratio of operating expenses to revenues	117.34%	116.87%
xx Including Account Maritime Freight Rates Act	\$134,000.00	\$128,000.00
xx Including a proportion of mixed train miles.		

1. The first part of the document discusses the importance of maintaining accurate records of all activities. It emphasizes that this is essential for ensuring the integrity and reliability of the information collected.

2. The second part of the document outlines the procedures for collecting and analyzing data. It describes the various methods used to gather information and the steps involved in processing and interpreting the results.

3. The third part of the document provides a detailed account of the findings of the study. It presents the data in a clear and concise manner, highlighting the key trends and patterns observed.

4. The fourth part of the document discusses the implications of the findings and offers recommendations for future research. It suggests that further studies should be conducted to explore the underlying causes of the observed phenomena.

5. The fifth part of the document concludes the report and summarizes the main points. It reiterates the importance of accurate record-keeping and the need for ongoing research in this field.

OPERATING REVENUES, EXPENSES & STATISTICS
CANADIAN NATIONAL RAILWAYS
For the Month of October, 1932

	1932	1931
<u>OPERATING REVENUES</u>		
Freight	\$10,023,889.00	\$11,095,982.00
Passenger	858,314.00	1,056,619.00
Mail	171,013.36	198,976.77
Express	594,479.42	700,268.05
Other freight train		10.00
Other passenger train	99,458.96	134,513.41
Water line		
All other	552,157.26	777,793.77
Total railway operating revenues	12,299,312.00	13,964,163.00
<u>OPERATING EXPENSES</u>		
Maintenance of way and structures	\$1,926,160.26	\$2,529,731.95
Maintenance of equipment	1,935,837.37	2,626,456.23
Traffic	319,157.39	429,680.35
Transportation	4,922,760.34	5,969,518.09
Miscellaneous operations	64,067.28	94,588.89
General	389,678.39	466,213.82
Trans. for investment	Cr. 23,685.12	Cr. 120,711.76
Total railway operating expenses	9,533,975.91	11,995,477.57
<u>OPERATING INCOME</u>		
Net operating revenue	\$2,765,336.09	\$1,968,685.43
Railway tax accruals	289,582.77	313,778.23
Uncollectable revenues	26,152.91	3,210.88
Hire of equipment	Cr. 104,232.49	Cr. 128,181.36
Joint facilities rents	Dr. 17,151.97	Dr. 9,044.58
Operating income	2,536,680.93	1,770,833.10
<u>OPERATING STATISTICS</u>		
Average miles of road operated	18,744.51	18,646.02
No. of tons carried (Rev. Fr.)	2,788,621	2,985,637
No. of tons carried one mile " "	1,190,172,533	1,370,801,706
No. of tons carried one mile (All Fr.)	1,285,741,358	1,465,221,786
Gross ton miles, excl. of locomotive & tender	2,867,935,959	3,256,619,906
No. of revenue passengers carried	487,393	651,248
No. of revenue passengers carried one mile	36,778,909	38,812,494
# Freight train miles	1,831,225	2,032,691
# Passenger train miles	1,143,949	1,337,637
Total train miles (Rev. & Non Rev.)	3,013,167	3,470,552
Freight car miles-loaded	45,277,653	52,043,620
Freight car miles-empty	28,348,193	32,276,302
Passenger train car miles	8,278,325	9,401,694
Total amount of pay roll	6,694,838	8,654,301
Number of employees	57,755	68,090
<u>DAILY AVERAGES PER MILE OF ROAD OPERATED</u>		
Operating revenue	\$21.17	\$24.16
Operating expenses	\$16.41	\$20.75
No. of tons moved one mile (Rev. Fr.)	2,048	2,372
No. of tons moved one mile (All Fr.)	2,213	2,535
No. of rev. passengers carried one mile	63	67
<u># AVERAGES PER FREIGHT TRAIN MILE</u>		
Freight revenue	\$5.47	\$5.46
No. of tons of freight (Rev. Fr.)	649.9	674.4
No. of tons of freight (All Fr.)	702.0	720.8
Gross ton miles	1566.1	1602.1
Loaded freight cars	24.7	25.6
Empty freight cars	15.5	15.9
<u># AVERAGES PER PASSENGER TRAIN MILE</u>		
Passenger train revenues	\$1.51	\$1.56
Passengers carried	32.2	29.0
Passenger cars	7.2	7.0
Average operating expenses per train mile	\$3.16	\$3.46
Average length of haul (Rev. Fr.) Miles	426.8	459.1
Average passenger journey Miles	75.5	59.6
Average tons per loaded freight car mile	28.4	28.2
Average freight receipt per revenue ton mile	.842¢	.809¢
Average passenger receipt per passenger per mile	2.334¢	2.722¢
Ratio of pay roll to operating revenues	54.4%	62.0%
Ratio of operating expenses to revenues	77.52%	85.90%

- Contains a proportion of mixed train miles.

UNITED STATES DEPARTMENT OF AGRICULTURE BUREAU OF PLANT INDUSTRY WASHINGTON, D. C.

No.	Name	Quantity	Value	Remarks
1
2
3
4
5
6
7
8
9
10
11
12
13
14
15
16
17
18
19
20
21
22
23
24
25
26
27
28
29
30
31
32
33
34
35
36
37
38
39
40
41
42
43
44
45
46
47
48
49
50
51
52
53
54
55
56
57
58
59
60
61
62
63
64
65
66
67
68
69
70
71
72
73
74
75
76
77
78
79
80
81
82
83
84
85
86
87
88
89
90
91
92
93
94
95
96
97
98
99
100

OPERATING REVENUES, EXPENSES & STATISTICS

CANADIAN PACIFIC RAILWAY

For the Month of October, 1932

	1932	1931
<u>OPERATING REVENUES</u>		
Freight	\$10,078,535.13	\$10,804,230.24
Passenger	1,134,069.63	1,363,855.44
Mail	300,138.91	314,351.90
Express	216,446.90	271,733.45
Other freight train	348.43	1,163.12
Other passenger train	188,693.12	239,893.42
Water line	147,100.24	157,880.95
All other	224,390.40	571,185.99
Total railway operating revenues	12,289,722.76	13,724,294.51
<u>OPERATING EXPENSES</u>		
Maintenance of way and structures	\$1,837,666.79	\$1,570,595.75
Maintenance of equipment	943,847.16	986,356.38
Traffic	534,063.89	794,095.48
Transportation	4,348,803.36	5,190,568.38
Miscellaneous operations	99,714.53	144,301.32
General	254,021.29	272,734.78
Trans. for investment	Cr. 13,553.68	Cr. 26,758.14
Total railway operating expenses	8,004,563.34	8,931,853.95
<u>OPERATING INCOME</u>		
Net operating revenue	\$4,285,159.42	\$4,792,440.56
Railway tax accruals	351,359.86	355,532.73
Uncollectable revenues	234.39	...
Hire of equipment	Cr. 8,046.57	Cr. 31,032.29
Joint facilities rents	Dr. 18,038.25	Cr. 8,722.40
Operating income	3,923,573.49	4,476,662.52
<u>OPERATING STATISTICS</u>		
Average miles of road operated	16,961.9	16,772.6
No. of tons carried (Rev.Fr.)	2,478,125	3,079,126
No. of tons carried one mile " "	1,192,886,274	1,266,517,840
No. of tons carried one mile (All Fr.)	1,276,147,739	1,353,267,908
Gross ton miles, excl. of locomotive & tender	2,738,419,096	2,923,777,877
No. of revenue passengers carried	501,699	567,999
No. of revenue passengers carried one mile	42,371,098	48,783,748
# Freight train miles	1,834,633	2,070,062
# Passenger train miles	1,436,457	1,571,627
Total train miles (Rev. & Non Rev.)	3,303,084	3,678,653
Freight car miles-loaded	42,678,135	47,111,521
Freight car miles-empty	23,969,230	25,516,578
Passenger train car miles	9,365,489	10,752,878
Total amount of pay roll	\$5,366,142.45	\$6,137,882.33
Number of employees	44,618	46,230
<u>DAILY AVERAGES PER MILE OF ROAD OPERATED</u>		
Operating revenue	\$23.37	\$26.40
Operating expenses	\$15.22	\$17.18
No. of tons moved one mile (Rev.Fr.)	2,269	2,436
No. of tons moved one mile (All Fr.)	2,427	2,603
No. of rev. passengers carried one mile	81	94
<u>#AVERAGES PER FREIGHT TRAIN MILE</u>		
Freight revenue	\$5.49	\$5.22
No. of tons of freight (Rev.Fr.)	650.2	611.8
No. of tons of freight (All Fr.)	695.6	653.7
Gross ton miles	1492.6	1412.4
Loaded freight cars	23.3	22.8
Empty freight cars	13.1	12.3
<u>#AVERAGES PER PASSENGER TRAIN MILE</u>		
Passenger train revenues	\$1.28	\$1.39
Passengers carried	29.5	31.0
Passenger cars	6.5	6.8
Average operating expenses per train mile	\$2.42	\$2.43
Average length of haul (Rev.Fr.) Miles	481.4	411.3
Average passenger journey Miles	84.5	85.9
Average tons per loaded freight car mile	29.9	28.7
Average freight receipt per revenue ton mile	.845¢	.853¢
Average passenger receipt per passenger per mile	2.677¢	2.796¢
Ratio of pay roll to operating revenues	43.7%	44.7%
Ratio of operating expenses to revenues	65.13%	65.08%

- Contains a proportion of mixed train miles.

CANADIAN NATIONAL SYSTEM
(Steam Lines in Canada & United States)
For the Month of October, 1932

OPERATING REVENUES

	<u>1932</u>	<u>1931</u>
Canadian Lines	\$12,299,312.00	\$13,964,163.00
Duluth, Winnipeg and Pacific	70,074.00	80,064.00
Grand Trunk Western	1,256,513.00	1,393,622.00
New England Lines	121,187.00	66,702.00
Central Vermont Railway	439,810.00	514,215.00
Total	<u>14,186,896.00</u>	<u>16,018,766.00</u>

OPERATING EXPENSES

Canadian Lines	\$9,533,975.91	\$11,995,477.57
Duluth, Winnipeg and Pacific	91,394.82	105,398.15
Grand Trunk Western	1,139,817.26	1,510,936.24
New England Lines	104,314.41	128,205.63
Central Vermont Railway	391,921.16	437,000.36
Total	<u>11,261,423.56</u>	<u>14,177,017.95</u>

NET OPERATING REVENUE

Canadian Lines	\$2,765,336.09	\$1,968,685.43
Duluth, Winnipeg and Pacific	Dr. 21,320.82	Dr. 25,334.15
Grand Trunk Western	116,695.74	Dr. 117,314.24
New England Lines	16,872.59	Dr. 61,503.63
Central Vermont Railway	47,888.84	77,214.64
Total	<u>2,925,472.44</u>	<u>1,841,748.05</u>

OPERATING INCOME

Canadian Lines	\$2,536,680.93	\$1,770,833.10
Duluth, Winnipeg and Pacific	Dr. 6,251.32	Dr. 26,030.30
Grand Trunk Western	Dr. 65,587.25	Dr. 292,175.23
New England Lines	Dr. 27,966.74	Dr. 124,715.07
Central Vermont Railway	16,427.73	67,406.06
Total	<u>2,453,303.35</u>	<u>1,395,318.56</u>

S U M M A R Y

For Ten Months ended October 31st

ALL RAILWAYS

Operating revenues	\$244,753,718.03	\$295,952,962.68
Operating expenses	216,545,579.97	270,687,114.59
Net operating revenues	28,208,138.06	25,265,848.09
Operating income	19,386,033.57	16,547,880.68

CANADIAN NATIONAL RAILWAYS

Operating revenues - Canadian Lines	\$103,447,524.00	\$123,479,801.55
# United States Lines	17,966,353.00	25,091,779.45
Total	<u>121,413,877.00</u>	<u>148,571,581.00</u>
Operating expenses - Canadian Lines	94,458,101.90	119,484,269.60
# United States Lines	17,830,185.28	23,679,792.93
Total	<u>112,288,287.18</u>	<u>143,164,062.53</u>
Net operating revenues - Canadian Lines	8,989,422.10	3,995,531.95
# United States Lines	136,167.72	1,411,986.52
Total	<u>9,125,589.82</u>	<u>5,407,518.47</u>
Operating income - Canadian Lines	7,269,582.34	2,511,993.23
# United States Lines	Dr. 2,421,107.01	Dr. 1,989,512.05
Total	<u>4,848,475.33</u>	<u>522,481.18</u>

CANADIAN NATIONAL RAILWAYS - EASTERN LINES

Operating revenues	\$14,736,563.00	\$19,672,495.00
Operating expenses	18,567,597.89	25,609,247.62
Net operating revenues	Dr. 3,831,034.89	Dr. 5,936,752.62
Operating income	Dr. 4,901,590.88	Dr. 6,790,656.19

CANADIAN PACIFIC RAILWAY

Operating revenues	\$103,300,506.92	\$121,889,341.27
Operating expenses	85,527,073.23	101,580,657.12
Net operating revenues	17,773,433.69	20,308,684.15
Operating income	14,454,943.60	17,268,829.24

- Including Central Vermont Railway.

STATISTICS CANADA LIBRARY
BIBLIOTHÈQUE STATISTIQUE CANADA



1010703532