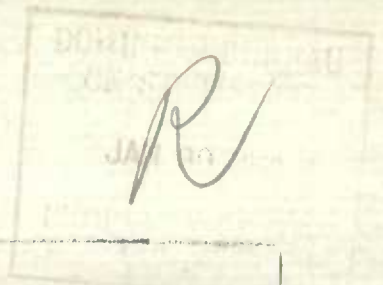


52 003

Historical File Copy



C A N A D A
DEPARTMENT OF TRADE AND COMMERCE
DOMINION BUREAU OF STATISTICS
TRANSPORTATION BRANCH

OPERATING REVENUES EXPENSES & STATISTICS
of
RAILWAYS

With Annual Operating Revenues of \$500,000

For
NOVEMBER
1932

+ + +

Published by Authority of the Hon. H.H. Stevens, M.P.,
Minister of Trade and Commerce

+ + +

OTTAWA

1933

DEPARTMENT OF TRADE AND COMMERCE
DOMINION BUREAU OF STATISTICS
TRANSPORTATION AND PUBLIC UTILITIES BRANCH
OTTAWA

Dominion Statistician, R.H. Coats, B.A., F.S.S., (Hon.), F.R.S.C.
Chief, Transportation and Public Utilities Branch, G.S. Wrcng, B.Sc.

OPERATING REVENUES, EXPENSES & STATISTICS

STEAM RAILWAYS OF CANADA

WITH ANNUAL OPERATING REVENUES OF \$500,000

FOR THE MONTH OF NOVEMBER, 1932

Gross revenues of Canadian railways for November amounted to \$24,276,278 as compared with \$31,424,404 in 1931. This decrease of \$7,148,125 more than offset the decrease in operating expenses of \$4,705,948 and the net operating revenue was reduced from \$7,410,779 in 1931 to \$4,968,602. Freight traffic was lighter than in November, 1931, by 22.3 per cent and passenger traffic declined by 2.3 per cent. The reduction in the pay roll was \$3,371,213 and the number of employees was reduced from 132,308 to 110,929. This is a loss during the past decade of 38 per cent from the highest November (1928), and a decrease of 16.2 per cent, or 21,379 employees, from November, 1931.

For the eleven months gross revenues amounted to \$269,029,996, as against \$327,377,367 in 1931, and ^{net} operating revenues amounted to \$33,176,740 as against \$32,676,627 in 1931.

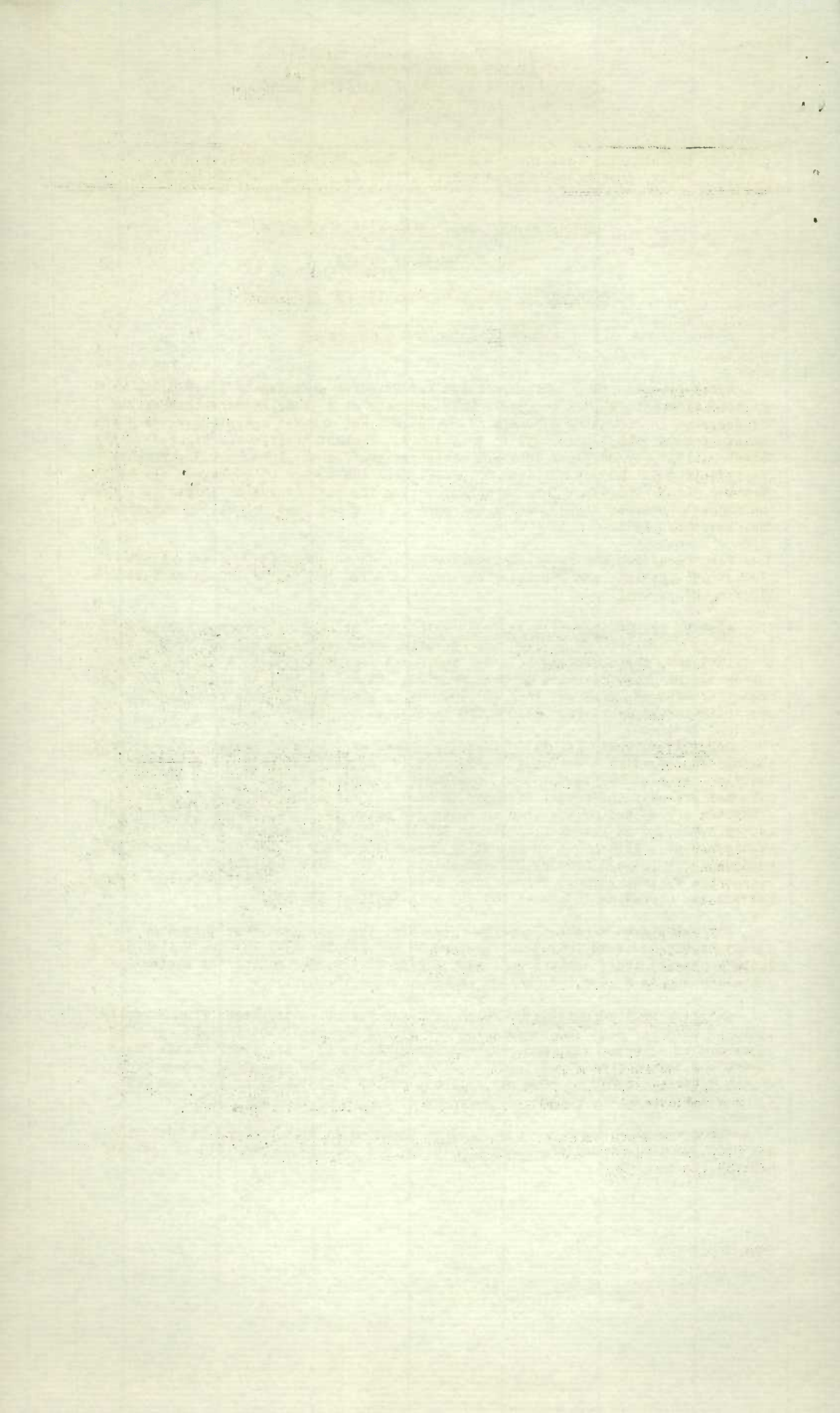
EASTERN LINES - CANADIAN NATIONAL RAILWAYS: With gross revenues declining from \$1,689,171 in 1931 to \$1,297,144 and operating expenses being reduced from \$1,888,501 to \$1,599,124, the operating loss was increased from \$199,330 to \$301,980. For the eleven months gross revenues dropped from \$21,361,666 in 1931 to \$16,033,707, but operating expenses were cut from \$27,497,749 to \$20,166,722, thus reducing the operating income debit from \$7,079,685 in 1931 to \$5,318,532 in 1932.

CANADIAN NATIONAL RAILWAYS- (Canadian Lines exclusive of Eastern Lines): Freight traffic decreased from November, 1931, by 30.4 per cent and although passenger traffic increased by 9.9 per cent, passenger receipts were less by 5.6 per cent. This was probably the result of cheap excursions increasing the passenger miles without a corresponding increase in passenger revenues. Total gross revenues fell from \$13,422,447 in November, 1931, to \$10,165,775, a decrease of \$3,256,672, or 24.3 per cent. With a cut in operating expenses of only \$2,134,817, net operating revenues were reduced from \$2,200,430 to \$1,078,575. All the lines except the Central Vermont showed lower losses than in 1931, but the Central Vermont reduced its operating income of \$33,203 to a debit of \$10,559.

For the eleven months, January - November, the Canadian lines showed an operating income of \$8,166,636 as against \$4,485,119 in 1931, but the United States lines increased their debit from \$2,370,271 to \$2,720,294, making the system operating income \$5,446,341 in 1932 and \$2,114,848 in 1931.

CANADIAN PACIFIC RAILWAY: Freight revenue ton miles decreased from November, 1931, by 12.9 per cent and passenger miles by 4.7 per cent, but freight revenues decreased by 23.4 per cent and passenger receipts by 13.7 per cent. Total gross revenues declined from \$13,713,407 to \$10,725,715 and the operating income from \$4,565,374 to \$3,324,291. The pay roll was cut by \$1,191,245, or 19.6 per cent, for a reduction in the number of employees of 8,010, or 16.7 per cent.

For the eleven months, gross revenues amounted to \$114,026,222 in 1932 and \$135,602,748 in 1931 and the operating income was \$17,779,235 in 1932 as against \$21,834,204 in 1931.



OPERATING REVENUES, EXPENSES & STATISTICS
STEAM RAILWAYS OF CANADA
WITH ANNUAL OPERATING REVENUES OF \$500,000
For the Month of November, 1932

	1932	1931
<u>OPERATING REVENUES</u>		
Freight	\$18,759,139.61	\$24,662,793.18
Passenger	2,232,814.70	2,600,517.73
Mail	552,116.56	557,525.61
Express	924,610.77	1,084,393.90
Other freight train	4,358.47	4,898.62
Other passenger train	250,931.98	327,606.86
Water line	151,235.25	156,666.51
All other	1,401,071.56	2,030,002.13
Total railway operating revenues	24,276,278.90	31,424,404.54
<u>OPERATING EXPENSES</u>		
Maintenance of way and structures	\$3,761,031.46	\$4,463,053.44
Maintenance of equipment	3,316,693.98	4,469,511.43
Traffic	889,250.80	1,382,106.24
Transportation	10,340,557.11	12,573,590.56
Miscellaneous operations	192,476.74	281,656.33
General	895,711.87	1,007,749.60
Trans. for investment	Cr. 88,045.66	Cr. 164,042.63
Total railway operating expenses	19,307,676.30	24,013,624.97
<u>OPERATING INCOME</u>		
Net operating revenue	\$4,968,602.60	\$7,410,779.57
Railway tax accruals	721,106.85	792,032.19
Uncollectable revenues	5,518.88	2,703.70
Hire of equipment	Dr. 150,128.91	Dr. 117,643.23
Joint facilities rents	Dr. 35,299.74	Dr. 81,567.29
Operating income	4,056,548.92	6,416,833.16
<u>OPERATING STATISTICS</u>		
Average miles of road operated	42,412.68	42,012.48
No. of tons carried (Rev. Fr.)	6,090,869	7,443,282
No. of tons carried one mile " "	2,181,191,509	2,805,611,664
No. of tons carried one mile (All Fr.)	2,348,460,620	2,991,502,738
Gross ton miles, excl. of locomotive & tender	5,221,804,980	6,684,132,699
No. of revenue passengers carried	1,224,881	1,451,957
No. of revenue passengers carried one mile	89,821,690	91,949,016
# Freight train miles	3,822,891	4,582,785
# Passenger train miles	2,980,534	3,306,137
Total train miles (Rev. & Non-rev.)	6,858,762	7,967,130
Freight car miles- loaded	85,808,061	108,860,569
Freight car miles- empty	43,728,205	62,107,717
Passenger train car miles	20,256,388	22,663,960
Total amount of pay roll	\$13,009,631.46	\$16,380,845.45
Number of employees	110,929	132,308
<u>DAILY AVERAGES PER MILE OF ROAD OPERATED</u>		
Operating revenue	\$19.08	\$24.93
Operating expenses	\$15.17	\$19.05
No. of tons moved one mile (Rev. Fr.)	1,714	2,226
No. of tons moved one mile (All Fr.)	1,846	2,374
No. of rev. passengers carried one mile	71	73
<u>#AVERAGES PER FREIGHT TRAIN MILE</u>		
Freight revenue	\$4.91	\$5.38
No. of tons of freight (Rev. Fr.)	570.6	612.2
No. of tons of freight (All Fr.)	614.3	652.8
Gross ton miles	1365.9	1458.5
Loaded freight cars	22.4	23.8
Empty freight cars	11.4	13.6
<u>#AVERAGES PER PASSENGER TRAIN MILE</u>		
Passenger train revenues	\$1.33	\$1.38
Passengers carried	30.1	27.8
Passenger cars	6.8	6.9
Average operating expenses per train mile	\$2.82	\$3.01
Average length of haul (Rev. Fr.) Miles	358.1	376.9
Average passenger journey Miles	73.3	63.3
Average tons per loaded freight car mile	27.4	27.5
Average freight receipt per revenue ton mile	.860¢	.879¢
Average passenger receipt per passenger per mile	2.486¢	2.828¢
Ratio of pay roll to operating revenues	53.6%	52.1%
Ratio of operating expenses to revenues	79.53%	76.42%
# - Contains a proportion of mixed train miles.		

Subject to Revis

OPERATING REVENUES, EXPENSES & STATISTICS

EASTERN LINES

CANADIAN NATIONAL RAILWAYS

For the month of November, 1932

	1932	1931
<u>OPERATING REVENUES</u>		
Freight xx	\$949,131.00	\$1,159,562.00
Passenger	151,634.00	183,773.00
Mail	60,649.00	61,744.00
Express	81,150.00	112,475.00
Other freight train		
Other passenger train	10,468.04	28,987.42
Water line		
All other	44,111.96	142,629.58
Total railway operating revenues	1,297,144.00	1,689,171.00
<u>OPERATING EXPENSES</u>		
Maintenance of way and structures	\$ 330,790.37	\$ 359,088.29
Maintenance of equipment	243,446.80	340,743.46
Traffic	47,046.67	59,278.96
Transportation	833,705.57	980,464.89
Miscellaneous operations	14,335.57	21,176.48
General	132,436.24	132,495.62
Trans. for investment	Cr. 2,636.50	Cr. 4,746.15
Total railway operating expenses	1,599,124.72	1,888,501.55
<u>OPERATING INCOME</u>		
Net operating revenue	Dr. \$301,980.72	Dr. \$199,330.55
Railway tax accruals	28,298.01	25,398.90
Uncollectable revenues	66.32	140.93
Hire of equipment	Dr. 86,699.31	Dr. 66,384.00
Joint facilities rents	Cr. 102.92	Cr. 2,224.71
Operating income	Dr. 416,941.44	Dr. 289,029.67
<u>OPERATING STATISTICS</u>		
Average miles of road operated	3,342.37	3,342.39
No. of tons carried (Rev.Fr.)	333,749	414,233
No. of tons carried one mile " "	89,005,740	109,958,068
No. of tons carried one mile (All Fr.)	96,002,915	117,451,025
Gross ton miles, excl. of locomotive & tender	228,903,204	273,980,138
No. of revenue passengers carried	121,438	154,109
No. of revenue passengers carried one mile	7,293,903	6,863,151
# Freight train miles	224,481	266,606
# Passenger train miles	225,589	265,364
Total train miles (Rev. & Non-rev.)	453,995	535,865
Freight car miles - loaded	4,305,824	5,338,513
Freight car miles - empty	1,582,199	1,693,895
Passenger train car miles	1,487,314	1,671,969
Total amount of pay roll	\$ 994,225	\$1,213,475
Number of employees	9,302	10,536
<u>DAILY AVERAGES PER MILE OF ROAD OPERATED</u>		
Operating revenue	\$12.94	\$16.85
Operating expenses	\$15.95	\$18.83
No. of tons moved one mile (Rev.Fr.)	888	1,097
No. of tons moved one mile (All Fr.)	957	1,171
No. of revenue passengers carried one mile	73	68
<u>#AVERAGES PER FREIGHT TRAIN MILE</u>		
Freight revenue	\$4.23	\$4.35
No. of tons of freight (Rev.Fr.)	396.5	412.4
No. of tons of freight (All Fr.)	427.7	440.5
Gross ton miles	1019.7	1027.7
Loaded freight cars	19.2	20.0
Empty freight cars	7.0	6.4
<u>#AVERAGES PER PASSENGER TRAIN MILE</u>		
Passenger train revenues	\$1.35	\$1.46
Passengers carried	32.3	25.9
Passenger cars	6.6	6.3
Average operating expenses per train mile	\$3.52	\$3.52
Average length of haul (Rev.Fr.) Miles	266.7	265.4
Average passenger journey Miles	60.1	44.5
Average tons per loaded freight car mile	22.3	22.0
Average freight receipt per revenue ton mile	1.066¢	1.055¢
Average passenger receipt per passenger per mile	2.079¢	2.678¢
Ratio of pay roll to operating revenues	76.6%	71.8%
Ratio of operating expenses to revenues	123.28%	111.80%
xx--Including account Maritime Freight Rates Act	\$119,000.00	\$137,000.00
# - Contains a proportion of mixed train miles.		

OPERATING REVENUES, EXPENSES & STATISTICS

CANADIAN NATIONAL RAILWAYS

For the Month of November, 1932

	1932	1931
<u>OPERATING REVENUES</u>		
Freight	\$7,982,938.00	\$10,854,454.00
Passenger	807,620.00	855,571.00
Mail	176,807.18	177,071.00
Express	542,262.09	669,781.59
Other freight train	540.00	15.36
Other passenger train	83,923.95	102,834.18
Water line		
All other	571,683.78	762,719.87
Total railway operating revenues	10,165,775.00	13,422,447.00
<u>OPERATING EXPENSES</u>		
Maintenance of way and structures	\$1,710,089.07	\$2,070,224.98
Maintenance of equipment	1,929,013.78	2,598,601.47
Traffic	307,230.77	418,557.15
Transportation	4,701,737.60	5,672,119.02
Miscellaneous operations	60,467.07	81,751.15
General	403,698.99	452,272.24
Trans. for investment	Cr. 25,037.83	Cr. 71,509.33
Total railway operating expenses	9,087,199.45	11,222,016.68
<u>OPERATING INCOME</u>		
Net operating revenue	\$1,078,575.55	\$2,200,430.32
Railway tax accruals	290,097.77	312,637.75
Uncollectable revenues	3,518.64	2,456.70
Hire of equipment	Cr. 93,124.67	Cr. 100,374.34
Joint facilities rents	Cr. 18,970.56	Dr. 12,583.84
Operating income	897,054.37	1,973,126.37
<u>OPERATING STATISTICS</u>		
Average miles of road operated	18,744.51	18,617.10
No. of tons carried (Rev.Fr.)	2,385,138	3,035,068
No. of tons carried one mile " "	936,461,310	1,346,442,733
No. of tons carried one mile (All Fr.)	1,025,138,331	1,433,433,161
Gross ton miles, excl. of locomotive & tender	2,221,782,227	3,143,113,158
No. of revenue passengers carried	480,264	594,016
No. of revenue passengers carried one mile	33,525,209	30,497,494
# Freight train miles	1,596,864	1,966,613
# Passenger train miles	1,126,947	1,259,473
Total train miles (Rev. & Non-rev.)	2,754,783	3,269,561
Freight car miles- loaded	36,854,509	50,063,629
Freight car miles- empty	18,032,702	30,770,519
Passenger train car miles	7,879,018	8,530,459
Total amount of pay roll	6,377,974	8,112,249
Number of employees	55,178	66,318
<u>DAILY AVERAGES PER MILE OF ROAD OPERATED</u>		
Operating revenue	\$18.08	\$24.03
Operating expenses	\$16.16	\$20.09
No. of tons moved one mile (Rev.Fr.)	1,665	2,411
No. of tons moved one mile (All Fr.)	1,823	2,567
No. of rev. passengers carried one mile	60	55
<u>#AVERAGES PER FREIGHT TRAIN MILE</u>		
Freight revenue	\$5.00	\$5.52
No. of tons of freight (Rev.Fr.)	586.4	684.7
No. of tons of freight (All Fr.)	642.0	728.9
Gross ton miles	1391.3	1598.2
Loaded freight cars	23.1	25.5
Empty freight cars	11.3	15.6
<u>#AVERAGES PER PASSENGER TRAIN MILE</u>		
Passenger train revenues	\$1.43	\$1.43
Passengers carried	29.7	24.2
Passenger cars	7.0	6.8
Average operating expenses per train mile	\$3.30	\$3.43
Average length of haul (Rev.Fr.) Miles	392.6	443.6
Average passenger journey Miles	69.8	51.3
Average tons per loaded freight car mile	27.8	28.6
Average freight receipt per revenue ton mile	.853¢	.806¢
Average passenger receipt per passenger per mile	2.409¢	2.805¢
Ratio of pay roll to operating revenues	62.7%	60.4%
Ratio of operating expenses to revenues	89.39%	83.61%

- Contains a proportion of mixed train miles.

OPERATING REVENUES, EXPENSES & STATISTICS

CANADIAN PACIFIC RAILWAY

For the Month of November, 1932

1932

1931

OPERATING REVENUES

Freight	\$8,170,930.09	\$10,662,348.50
Passenger	1,042,515.41	1,208,046.17
Mail	279,387.63	283,360.95
Express	250,179.41	220,091.87
Other freight train	3,142.28	4,033.94
Other passenger train	148,816.21	184,937.58
Water line	124,444.80	139,079.40
All other	706,300.68	1,011,509.15
Total railway operating revenues	10,725,715.91	13,713,407.56

OPERATING EXPENSES

Maintenance of way and structures	\$1,522,468.79	\$1,644,027.87
Maintenance of equipment	737,201.36	1,067,640.94
Traffic	474,380.34	826,503.67
Transportation	4,039,893.90	4,951,778.62
Miscellaneous operations	88,078.71	130,004.29
General	245,658.49	282,998.44
Trans. for investment	Cr. 55,031.01	Cr. 83,555.10
Total railway operating expenses	7,052,650.58	8,819,398.73

OPERATING INCOME

Net operating revenue	\$3,673,065.33	\$4,894,008.83
Railway tax accruals	351,960.58	358,432.54
Uncollectable revenues	1,929.35	
Hire of equipment	Cr. 11,724.60	Cr. 44,560.78
Joint facilities rents	Dr. 6,608.21	Dr. 14,762.12
Operating income	3,324,291.79	4,565,374.95

OPERATING STATISTICS

Average miles of road operated	16,961.9	16,772.6
No. of tons carried (Rev.Fr.)	2,172,366	2,550,285
No. of tons carried one mile " "	1,022,617,962	1,174,154,609
No. of tons carried one mile (All Fr.)	1,090,103,611	1,260,612,324
Gross ton miles, excl. of locomotive & tender	2,322,185,875	2,712,870,895
No. of revenue passengers carried	501,510	539,653
No. of revenue passengers carried one mile	40,122,385	42,106,835
# Freight train miles	1,665,450	1,964,812
# Passenger train miles	1,397,984	1,491,207
Total train miles (Rev. & Non Rev.)	3,079,950	3,481,539
Freight car miles - loaded	36,601,624	43,903,445
Freight car miles - empty	19,197,391	23,428,502
Passenger train car miles	8,852,946	9,978,689
Total amount of pay roll	\$4,872,569.72	\$6,063,815.65
Number of employees	39,993	48,003

DAILY AVERAGES PER MILE OF ROAD OPERATED

Operating revenue	\$21.08	\$27.25
Operating expenses	\$13.86	\$17.53
No. of tons moved one mile (Rev.Fr.)	2,010	2,333
No. of tons moved one mile (All Fr.)	2,142	2,505
No. of rev. passengers carried one mile	79	84

#AVERAGES PER FREIGHT TRAIN MILE

Freight revenue	\$4.91	\$ 5.43
No. of tons of freight (Rev.Fr.)	614.0	597.6
No. of tons of freight (All Fr.)	654.5	641.6
Gross ton miles	1394.3	1380.7
Loaded freight cars	22.0	22.3
Empty freight cars	11.5	11.9

#AVERAGES PER PASSENGER TRAIN MILE

Passenger train revenues	\$1.23	\$1.27
Passengers carried	28.7	28.2
Passenger cars	6.3	6.7
Average operating expenses per train mile	\$2.29	\$2.53
Average length of haul (Rev.Fr.) Miles	470.7	460.4
Average passenger journey Miles	80.0	78.0
Average tons per loaded freight car mile	29.8	28.7
Average freight receipt per revenue ton mile	.799¢	.908¢
Average passenger receipt per passenger per mile	2.598¢	2.869¢
Ratio of pay roll to operating revenues	45.4%	44.2%
Ratio of operating expenses to revenues	65.75%	64.31%

- Contains a proportion of mixed train miles.

CANADIAN NATIONAL SYSTEM
(Steam Lines in Canada & United States)

For the Month of November, 1932

OPERATING REVENUES

	<u>1932</u>	<u>1931</u>
Canadian Lines	\$10,165,775.00	\$13,422,447.00
Duluth, Winnipeg and Pacific	63,229.00	71,135.00
Grand Trunk Western	1,040,462.00	1,226,081.00
New England Lines	94,728.00	98,965.00
Central Vermont Railway, Inc.	378,135.00	472,365.00
Total	<u>11,742,329.00</u>	<u>15,290,993.00</u>

OPERATING EXPENSES

Canadian Lines	9,087,199.45	11,222,016.68
Duluth, Winnipeg and Pacific	82,930.91	99,274.44
Grand Trunk Western	1,056,685.61	1,338,760.14
New England Lines	117,785.51	130,515.24
Central Vermont Railway, Inc.	359,146.36	415,945.27
Total	<u>10,703,747.84</u>	<u>13,206,511.77</u>

NET OPERATING REVENUE

Canadian Lines	1,078,575.55	2,200,430.32
Duluth, Winnipeg and Pacific	Dr. 13,701.91	Dr. 28,139.44
Grand Trunk Western	Dr. 16,223.61	Dr. 112,679.14
New England Lines	Dr. 23,057.51	Dr. 31,550.24
Central Vermont Railway, Inc.	18,988.64	56,419.73
Total	<u>1,038,581.16</u>	<u>2,084,481.23</u>

OPERATING INCOME

Canadian Lines	897,054.37	1,973,126.37
Duluth, Winnipeg and Pacific	Dr. 3,174.68	Dr. 23,014.99
Grand Trunk Western	Dr. 214,596.76	Dr. 299,597.27
New England Lines	Dr. 70,856.42	Dr. 91,350.05
Central Vermont Railway, Inc.	Dr. 10,559.85	33,203.35
Total	<u>597,866.66</u>	<u>1,592,367.41</u>

S U M M A R Y

For Eleven Months ended November 30th

ALL RAILWAYS

Operating revenues	\$269,029,996.93	\$327,377,367.22
Operating expenses	235,853,256.27	294,700,739.56
Net operating revenues	33,176,740.66	32,676,627.66
Operating income	23,442,582.49	22,964,713.84

CANADIAN NATIONAL RAILWAYS

Operating revenues - Canadian Lines	113,613,299.00	136,902,248.55
# United States Lines	19,542,907.00	26,960,325.45
Total	<u>133,156,206.00</u>	<u>163,862,574.00</u>
Operating expenses - Canadian Lines	103,545,301.35	130,706,286.28
# United States Lines	19,446,733.57	25,664,288.02
Total	<u>122,992,035.02</u>	<u>156,370,574.30</u>
Net operating revenues - Canadian Lines	10,067,997.65	6,195,962.27
# United States Lines	96,173.33	1,296,037.43
Total	<u>10,164,170.98</u>	<u>7,491,999.70</u>
Operating Income - Canadian Lines	8,166,636.71	4,485,119.60
# United States Lines	Dr. 2,720,294.72	Dr. 2,370,271.01
Total	<u>5,446,341.99</u>	<u>2,114,848.59</u>

CANADIAN NATIONAL RAILWAYS - EASTERN LINES

Operating revenues	16,033,707.00	21,361,666.00
Operating expenses	20,166,722.61	27,497,749.17
Net operating revenue	Dr. 4,133,015.61	Dr. 6,136,083.17
Operating income	Dr. 5,318,532.32	Dr. 7,079,685.86

CANADIAN PACIFIC RAILWAY

Operating revenues	114,026,222.83	135,602,748.83
Operating expenses	92,579,723.81	110,400,055.85
Net operating revenue	21,446,499.02	25,202,692.98
Operating income	17,779,235.39	21,834,204.19

- Including Central Vermont Railway.

STATISTICS CANADA LIBRARY
BIBLIOTHÈQUE STATISTIQUE CANADA



1010703533