

02 005
63
Historical File Copy

R
PROPERTY OF THE
LIBRARY

C A N A D A
DEPARTMENT OF TRADE AND COMMERCE
DOMINION BUREAU OF STATISTICS
TRANSPORTATION BRANCH

OPERATING REVENUES EXPENSES & STATISTICS
of
RAILWAYS

With Annual Operating Revenues of \$500,000

For
FEBRUARY
1933

— + + + —

Published by Authority of the Hon. H.H. Stevens, M.P.,
Minister of Trade and Commerce

+ + +

OTTAWA

1933

Historical File Copy

CANADA

DEPARTMENT OF TRADE AND COMMERCE

STATISTICS BRANCH

TRANSIT AND TRAFFIC

RAILWAYS AND STEAMSHIP LINES

VI

RAILWAYS

THE CANADIAN PACIFIC RAILWAY

1900

PHOTOCOPY

1900

Published by the Department of Trade and Commerce

Statistics Branch

OTTAWA

DEPARTMENT OF TRADE AND COMMERCE
DOMINION BUREAU OF STATISTICS
TRANSPORTATION AND PUBLIC UTILITIES BRANCH
OTTAWA

Dominion Statistician, R.H. Coats, B.A., F.S.S., (Hon.), F.R.S.C.
Chief, Transportation and Public Utilities Branch, G.S. Wrong, B.Sc.

OPERATING REVENUES, EXPENSES AND STATISTICS

STEAM RAILWAYS OF CANADA

WITH ANNUAL OPERATING REVENUES OF \$500,000

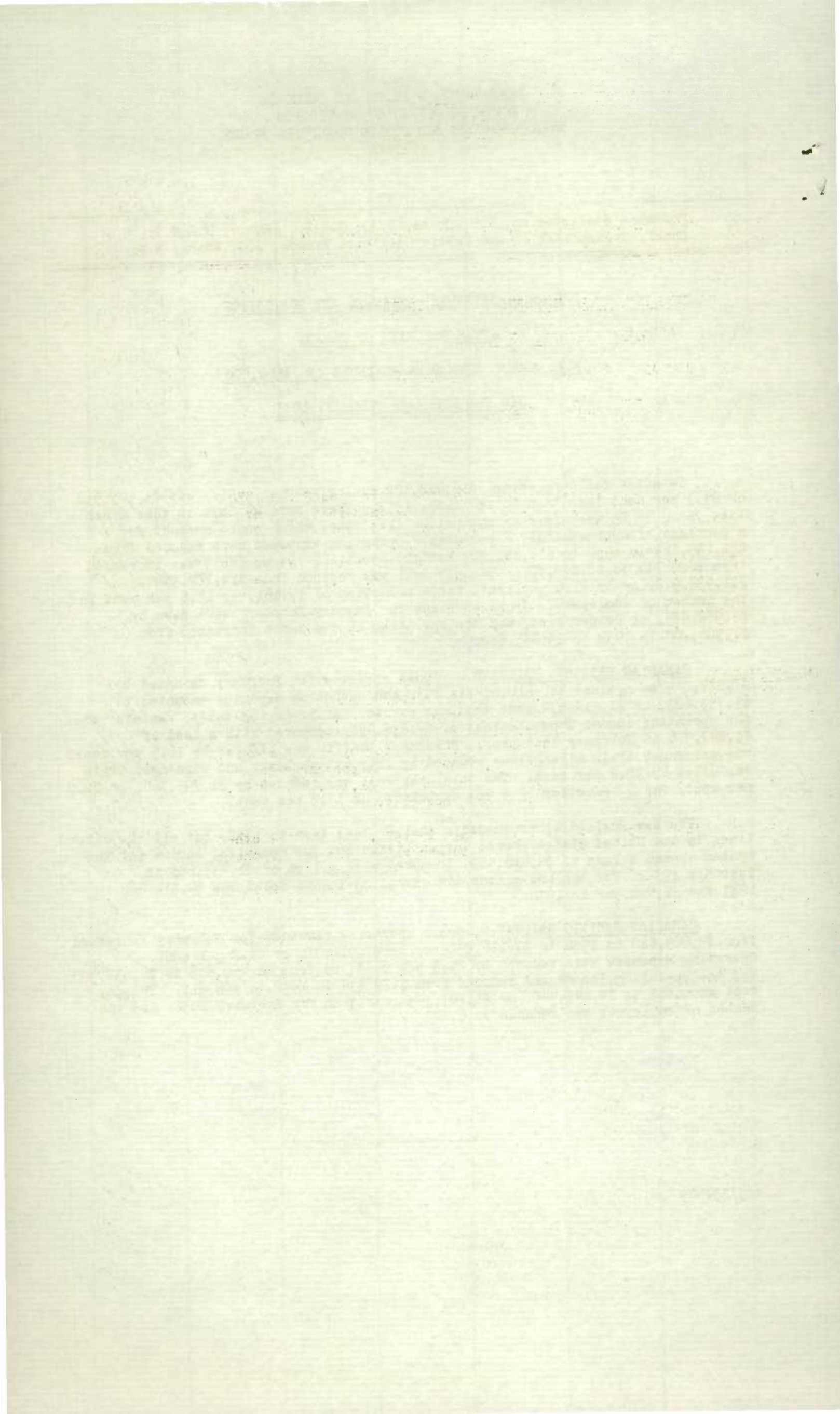
FOR THE MONTH OF FEBRUARY, 1933

Canadian railways earned \$16,788,129 during February which was \$5,505,532 or 24.7 per cent less than in February, 1932. There were 29 days in this month last year, or 25 week days as against 24 this year, which would account for a decrease of approximately 4 per cent. Operating expenses were reduced from \$22,195,613 in 1932 to \$17,881,527 and the operating income debit was increased from \$820,730 to \$2,072,805. The pay roll was reduced from \$15,104,986 to \$11,938,972, or by 21.0 per cent, for a reduction of 17,161, or 13.8 per cent in the number of employees. Gross revenues for January-February were down by \$9,982,875, or 22 per cent, and the operating income debit increased from \$1,306,708 in 1932 to \$3,885,622.

CANADIAN NATIONAL RAILWAYS.- Gross revenues for February amounted to \$7,834,249 as against \$10,910,634 in 1932 and operating expenses amounted to \$9,753,823, or \$1,919,574 more than was earned. After paying taxes, rentals, etc., the operating income showed a loss of \$2,238,098, compared with a loss of \$1,247,376 in February last year. Passenger traffic was lighter by 16.5 per cent, but passenger train mileage was reduced by only 6.3 per cent and passenger train car miles by 10.2 per cent. The total pay roll was reduced by \$1,755,760, or 20.9 per cent, for a reduction of 9,924 employees, or 13.9 per cent.

The New England lines showed a smaller loss than in 1932, but all the other lines in the United States showed larger losses and the operating income for the system showed a loss of \$2,426,489, compared with a loss of \$1,433,688 in February 1932. For the two months the operating income debit was \$4,914,662 in 1933 and \$2,966,562 in 1932.

CANADIAN PACIFIC RAILWAY.- Gross operating revenues for February decreased from \$9,029,822 in 1932 to \$7,116,852, or by \$1,912,970 or 21.2 per cent. Operating expenses were reduced by 21.5 per cent, or from \$8,460,516 to \$6,637,305, and the operating income was reduced from \$229,434 in 1932 to \$96,611. The pay roll amounted to \$4,643,445, or \$1,207,753 less than for February 1932, and the number of employees was reduced by 6,223.



OPERATING REVENUES, EXPENSES AND STATISTICS
STEAM RAILWAYS OF CANADA
WITH ANNUAL OPERATING REVENUES OF \$500,000
For the Month of February, 1933

1933

1932

OPERATING REVENUES

Freight	\$12,259,404.34	\$16,434,815.61
Passenger	2,178,982.94	2,885,026.43
Mail	493,838.93	552,249.44
Express	635,306.04	911,414.13
Other freight train	3,392.84	5,593.06
Other passenger train	240,728.60	331,769.50
Water line	8,322.05	12,744.86
All other	968,153.68	1,160,049.00
Total railway operating revenues	16,788,129.42	22,293,662.03

OPERATING EXPENSES

Maintenance of way and structures	\$ 2,877,905.35	\$3,643,218.97
Maintenance of equipment	3,775,085.65	4,895,192.71
Traffic	980,400.83	1,197,546.37
Transportation	9,181,463.27	11,230,996.93
Miscellaneous operations	185,996.36	258,592.81
General	887,103.15	994,138.06
Trans. for investment	Cr. 6,426.64	Cr. 24,072.04
Total railway operating expenses	17,881,527.97	22,195,613.81

OPERATING INCOME

Net operating revenue	Dr. \$1,093,398.55	\$ 98,048.22
Railway tax accruals	737,492.63	756,717.12
Uncollectable revenues	6,400.32	1,742.37
Hire of equipment	Dr. 109,929.40	Dr. 54,469.21
Joint facilities rents	Dr. 125,584.79	Dr. 105,850.08
Operating income	Dr. 2,072,805.69	Dr. 820,730.56

OPERATING STATISTICS

Average miles of road operated	42,337.47	42,141.68
No. of tons carried (Rev. Fr.)	4,077,537	5,364,921
No. of tons carried one mile " "	1,301,658,035	1,659,322,378
No. of tons carried one mile (All Fr.)	1,444,187,261	1,834,994,347
Gross ton miles, excl. of locomotive & tender	3,409,983,552	4,340,313,989
No. of revenue passengers carried	1,408,811	1,796,665
No. of revenue passengers carried one mile	87,675,894	106,974,091
# Freight train miles	2,910,013	3,558,036
# Passenger train miles	2,767,144	3,093,152
Total train miles (Rev. & Non Rev.)	5,846,294	6,803,078
Freight car miles - loaded	60,563,838	76,526,843
Freight car miles - empty	27,945,726	34,982,250
Passenger train car miles	18,014,729	21,087,519
Total amount of pay roll	\$11,938,972.44	\$15,104,986.17
Number of employees	107,400	124,561

DAILY AVERAGES PER MILE OF ROAD OPERATED

Operating revenue	\$14.16	\$18.24
Operating expenses	\$15.08	\$18.16
No. of tons moved one mile (Rev. Fr.)	1,098	1,358
No. of tons moved one mile (All Fr.)	1,218	1,501
No. of rev. passengers carried one mile	74	88

AVERAGES PER FREIGHT TRAIN MILE

Freight revenue	\$4.21	\$4.62
No. of tons of freight (Rev. Fr.)	447.3	466.4
No. of tons of freight (All Fr.)	496.3	515.7
Gross ton miles	1,171.8	1,219.9
Loaded freight cars	20.8	21.5
Empty freight cars	9.6	9.8

AVERAGES PER PASSENGER TRAIN MILE

Passenger train revenues	\$1.28	\$1.51
Passengers carried	31.7	34.6
Passenger cars	6.5	6.8
Average operating expenses per train mile	\$3.06	\$3.26
Average length of haul (Rev. Fr.) Miles	319.2	309.3
Average passenger journey Miles	62.2	59.5
Average tons per loaded freight car mile	23.8	24.0
Average freight receipt per revenue ton mile	.942¢	.990¢
Average passenger receipt per passenger per mile	2.485¢	2.697¢
Ratio of pay roll to operating revenues	71.1%	67.8%
Ratio of operating expenses to revenues	106.51%	99.56%

- Contains a proportion of mixed train miles.

OPERATING REVENUES, EXPENSES AND STATISTICS

CANADIAN NATIONAL RAILWAYS

For the month of February, 1933

	1933	1932
<u>OPERATING REVENUES</u>		
Freight	\$5,569,018.00	\$7,970,920.00
Passenger	968,050.00	1,273,121.00
Mail	208,745.00	233,183.08
Express	507,578.75	662,128.53
Other freight train	151.96	145.80
Other passenger train	95,623.62	130,944.25
Water line		
All other	485,081.67	640,391.34
Total railway operating revenues	7,834,249.00	10,910,634.00
<u>OPERATING EXPENSES</u>		
Maintenance of way and structures	\$1,732,793.96	\$1,995,783.01
Maintenance of equipment	2,179,398.18	2,754,294.94
Traffic	379,533.39	492,754.85
Transportation	4,860,798.55	5,966,569.79
Miscellaneous operations	71,414.22	91,745.09
General	534,319.05	591,944.50
Trans. for investment	Cr. 4,433.49	Cr. 14,915.43
Total railway operating expenses	9,753,823.86	11,878,176.75
<u>OPERATING INCOME</u>		
Net operating revenue	Dr. \$1,919,574.86	Dr. \$967,542.75
Railway tax accruals	325,186.54	335,213.01
Uncollectable revenues	2,496.40	1,229.43
Hire of equipment	Cr. 32,517.51	Cr. 70,841.29
Joint facilities rents	Dr. 23,358.63	Dr. 14,232.10
Operating income	Dr. 2,238,098.92	Dr. 1,247,376.00
<u>OPERATING STATISTICS</u>		
Average miles of road operated	21,932.95	22,056.44
No. of tons carried (Rev. Fr.)	1,674,871	2,334,313
No. of tons carried one mile "	593,189,141	827,960,493
No. of tons carried one mile (All Fr.)	671,650,242	921,367,183
Gross ton miles, excl. of locomotive & tender	1,584,450,291	2,116,246,169
No. of revenue passengers carried	704,572	876,395
No. of revenue passengers carried one mile	40,418,631	48,403,303
# Freight train miles	1,348,126	1,697,934
# Passenger train miles	1,272,772	1,358,902
Total train miles (Rev. & Non Rev.)	2,728,159	3,158,855
Freight car miles - loaded	28,260,882	37,726,990
Freight car miles - empty	12,258,734	16,358,020
Passenger train car miles	8,382,111	9,330,507
Total amount of pay roll	\$ 6,622,119	\$ 8,377,879
Number of employees	61,456	71,330
<u>DAILY AVERAGES PER MILE OF ROAD OPERATED</u>		
Operating revenue	\$12.76	\$17.06
Operating expenses	\$15.88	\$18.57
No. of tons moved one mile (Rev. Fr.)	966	1,294
No. of tons moved one mile (All Fr.)	1,094	1,440
No. of rev. passengers carried one mile	66	76
<u># AVERAGES PER FREIGHT TRAIN MILE</u>		
Freight revenue	\$4.13	\$4.69
No. of tons of freight (Rev. Fr.)	440.0	487.6
No. of tons of freight (All Fr.)	498.2	542.6
Gross ton miles	1,175.3	1,246.4
Loaded freight cars	21.0	22.2
Empty freight cars	9.1	9.6
<u># AVERAGES PER PASSENGER TRAIN MILE</u>		
Passenger train revenues	\$1.40	\$1.69
Passengers carried	31.8	35.6
Passenger cars	6.6	6.9
Average operating expenses per train mile	\$3.58	\$5.76
Average length of haul (Rev. Fr.) Miles	354.2	354.7
Average passenger journey Miles	57.4	55.2
Average tons per loaded freight car mile	23.8	24.4
Average freight receipt per revenue ton mile	.939¢	.963¢
Average passenger receipt per passenger per mile	2.395¢	2.630¢
Ratio of pay roll to operating revenues	84.5%	76.8%
Ratio of operating expenses to revenues	124.50%	108.87%

- Contains a proportion of mixed train miles.

THE UNIVERSITY OF CHICAGO
LIBRARY

THE UNIVERSITY OF CHICAGO
LIBRARY

THE UNIVERSITY OF CHICAGO
LIBRARY

THE UNIVERSITY OF CHICAGO
LIBRARY

THE UNIVERSITY OF CHICAGO
LIBRARY

OPERATING REVENUES, EXPENSES AND STATISTICS

CANADIAN PACIFIC RAILWAY

For the Month of February, 1933

	1933	1932
<u>OPERATING REVENUES</u>		
Freight	\$5,250,539.81	\$6,655,752.14
Passenger	973,172.50	1,277,873.72
Mail	252,786.22	282,741.70
Express	81,427.50	175,922.10
Other freight train	2,440.00	5,411.82
Other passenger train	137,469.80	190,349.75
Water line	8,322.05	12,744.86
All other	410,694.83	429,026.74
Total railway operating revenues	7,116,852.71	9,029,822.83
<u>OPERATING EXPENSES</u>		
Maintenance of way and structures	\$916,106.44	\$1,351,875.13
Maintenance of equipment	1,240,240.61	1,694,253.72
Traffic	540,065.92	629,911.03
Transportation	3,610,884.89	4,393,782.02
Miscellaneous operations	87,896.68	128,448.70
General	243,492.68	271,039.69
Trans. for investment	Cr. 1,381.26	Cr. 8,793.31
Total railway operating expenses	6,637,305.96	8,460,516.98
<u>OPERATING INCOME</u>		
Net operating revenue	\$479,546.75	\$569,305.85
Railway tax accruals	359,067.46	353,282.85
Uncollectable revenues	3,903.43	44.00
Hire of equipment	Cr. 14,656.16	Cr. 41,149.19
Joint facilities rents	Dr. 34,621.00	Dr. 27,694.00
Operating income	96,611.02	229,434.19
<u>OPERATING STATISTICS</u>		
Average miles of road operated	17,044.7	16,811.1
No. of tons carried (Rev. Fr.)	1,424,771	1,815,480
No. of tons carried one mile " "	587,243.035	679,467.531
No. of tons carried one mile (All Fr.)	647,955.023	756,417.564
Gross ton miles, excl. of locomotive & tender	1,427,199.817	1,697,418.630
No. of revenue passengers carried	577,917	741,235
No. of revenue passengers carried one mile	38,922.475	46,725.107
# Freight train miles	1,242,359	1,484,350
# Passenger train miles	1,278,988	1,466,515
Total train miles (Rev. & Non Rev.)	2,575,887	2,993,558
Freight car miles - loaded	24,494,882	29,465,846
Freight car miles - empty	10,750,687	12,745,926
Passenger train car miles	7,874,592	9,540,581
Total amount of pay roll	\$4,643,445.04	\$5,851,198.90
Number of employees	39,854	46,077
<u>DAILY AVERAGES PER MILE OF ROAD OPERATED</u>		
Operating revenue	\$14.91	\$18.52
Operating expenses	\$13.91	\$17.35
No. of tons moved one mile (Rev. Fr.)	1,230	1,394
No. of tons moved one mile (All Fr.)	1,358	1,552
No. of rev. passengers carried one mile	82	96
<u>#AVERAGES PER FREIGHT TRAIN MILE</u>		
Freight revenue	\$4.23	\$4.49
No. of tons of freight (Rev. Fr.)	472.7	457.8
No. of tons of freight (All Fr.)	521.6	509.6
Gross ton miles	1,148.8	1,143.5
Loaded freight cars	19.7	19.9
Empty freight cars	8.7	8.6
<u>#AVERAGES PER PASSENGER TRAIN MILE</u>		
Passenger train revenues	\$1.13	\$1.31
Passengers carried	30.4	31.9
Passenger cars	6.2	6.5
Average operating expenses per train mile	\$2.58	\$2.83
Average length of haul (Rev. Fr.) Miles	412.2	374.3
Average passenger journey Miles	67.3	63.0
Average tons per loaded freight car mile	26.5	25.7
Average freight receipt per revenue ton mile	.895¢	.980¢
Average passenger receipt per passenger per mile	2.500¢	2.735¢
Ratio of pay roll to operating revenues	68.2%	64.8%
Ratio of operating expenses to revenues	93.26%	93.70%

- Contains a proportion of mixed train miles.

CANADIAN NATIONAL SYSTEM
(Steam Lines in Canada & United States)
For the Month of February, 1933.

OPERATING REVENUES

	<u>1933</u>	<u>1932</u>
Canadian Lines	\$7,834,249.00	\$10,910,634.00
Duluth, Winnipeg and Pacific	56,771.00	96,854.00
Grand Trunk Western	1,146,685.00	1,317,434.00
New England Lines	88,938.00	104,814.00
Central Vermont	328,580.00	413,278.00
Total	<u>9,455,223.00</u>	<u>12,843,014.00</u>

OPERATING EXPENSES

Canadian Lines	\$9,753,823.86	\$11,878,176.75
Duluth, Winnipeg and Pacific	80,047.68	87,757.04
Grand Trunk Western	1,065,574.98	1,229,675.66
New England Lines	90,993.09	119,876.53
Central Vermont	325,295.79	382,316.21
Total	<u>11,315,735.40</u>	<u>13,697,802.19</u>

NET OPERATING REVENUE

Canadian Lines	Dr. \$1,919,574.86	Dr. \$967,542.75
Duluth, Winnipeg and Pacific	Dr. 23,276.68	9,096.96
Grand Trunk Western	81,110.02	87,758.34
New England Lines	Dr. 2,055.09	Dr. 15,062.53
Central Vermont	3,284.21	30,961.79
Total	Dr. <u>1,860,512.40</u>	Dr. <u>854,788.19</u>

OPERATING INCOME

Canadian Lines	Dr. \$ 2,238,098.92	Dr. \$1,247,376.00
Duluth, Winnipeg and Pacific	Dr. 6,201.90	23,464.09
Grand Trunk Western	Dr. 123,670.75	Dr. 132,172.49
New England Lines	Dr. 51,061.27	Dr. 74,354.65
Central Vermont	Dr. 7,456.47	Dr. 3,249.87
Total	Dr. <u>2,426,489.31</u>	Dr. <u>1,433,688.92</u>

S U M M A R Y

For Two Months ended February 28th

ALL RAILWAYS

Operating revenue	\$34,431,237.18	\$44,414,112.33
Operating expenses	36,409,182.45	43,976,520.88
Net operating revenue	Dr. 1,977,945.27	437,591.45
Operating income	Dr. 3,835,622.45	Dr. 1,306,708.32

CANADIAN NATIONAL RAILWAYS

Operating revenues - Canadian Lines	\$15,837,063.00	\$21,542,878.00
United States Lines	3,341,749.00	3,856,921.00
Total	<u>19,178,812.00</u>	<u>25,399,799.00</u>
Operating expenses - Canadian Lines	19,762,121.62	23,454,005.43
United States Lines	3,184,626.77	3,772,245.07
Total	<u>22,946,748.39</u>	<u>27,226,250.50</u>
Net operating revenue - Canadian Lines	Dr. 3,925,058.62	Dr. 1,911,127.43
United States Lines	157,122.23	84,675.93
Total	Dr. <u>3,767,936.39</u>	Dr. <u>1,826,451.50</u>
Operating income - Canadian Lines	Dr. 4,560,992.93	Dr. 2,479,289.37
United States Lines	Dr. 353,669.20	Dr. 487,272.83
Total	Dr. <u>4,914,662.13</u>	Dr. <u>2,966,562.20</u>

CANADIAN PACIFIC RAILWAY

Operating revenues	\$14,776,323.24	\$18,145,785.02
Operating expenses	13,642,152.37	16,710,399.18
Net operating revenues	1,134,170.87	1,435,385.84
Operating income	419,983.52	846,913.02

OPERATING REVENUES, EXPENSES AND STATISTICS

STEAM RAILWAYS OF CANADA

WITH ANNUAL OPERATING REVENUES OF \$500,000

FOR THE MONTH OF JANUARY, 1933

E R R A T A

		<u>Reads</u>	<u>Should Read</u>
<u>Page 2</u>			
No. of tons carried (Rev.Fr.)	1933	4,214,742	4,081,829
	1932	5,223,600	5,066,508
No. of revenue passengers carried	1933	1,459,511	1,454,176
	1932	1,823,719	1,813,802
Average length of haul	1933	329.2	339.9
	1932	307.2	316.7
Average passenger journey	1933	65.1	65.4
	1932	62.0	62.4
<u>Page 3</u>			
No. of tons carried (Rev.Fr.)	1933	1,780,330	1,647,417
	1932	2,344,980	2,187,888
No. of revenue passengers carried	1933	730,664	725,329
	1932	884,014	874,097
Average length of haul	1933	353.1	381.6
	1932	343.6	368.3
Average passenger journey	1933	61.6	62.0
	1932	56.1	56.7

29/4/33

STATISTICS CANADA LIBRARY
BIBLIOTHEQUE STATISTIQUE CANADA



1010553490