

c1

52

002

Historical File Copy

Published by Authority of the Hon. R.B. Hanson, K.C., M.P.,
Minister of Trade and Commerce

DOMINION BUREAU OF STATISTICS
TRANSPORTATION AND PUBLIC UTILITIES BRANCH
OTTAWA

DOMINION BUREAU
OF STATISTICS

JUL 5 1935

PROPERTY OF THE
LIBRARY.

Dominion Statistician, R.H. COATS, LL. D., F.R.S.C., F.S.S. (Hon.)

Chief, Transportation and Public Utilities Branch, G.S. Wrong, B.Sc.

OPERATING REVENUES, EXPENSES & STATISTICS
RAILWAYS IN CANADA
WITH ANNUAL OPERATING REVENUES OF
\$500,000 OR OVER

APRIL, 1935

NOT FOR LOAN
NE S'EMPRUNTE PAS

Gross earnings of Canadian railways for April increased from \$23,394,939 in 1934 to \$24,481,574 in 1935. Operating expenses also increased from \$19,488,410 to \$20,562,565 and the operating income was greater by \$150,563, increasing from \$2,839,087 to \$2,989,650. The increase in the total pay roll was \$324,956, or 2.6 per cent, but the number of employees declined from 113,230 to 110,706, or by 2.2 per cent. Freight train loading was lighter than last year by 18.1 revenue tons, but passenger trains showed an increase from 37.5 passengers to 44.3 and revenues increased by 11 cents per passenger train mile. For the four months, January to April, gross revenues were larger by \$1,172,250, but the operating income decreased by \$350,864.

CANADIAN NATIONAL RAILWAYS: Canadian lines showed an increase in gross revenues of \$350,870, or from \$11,213,358 for April 1934 to \$11,566,228 for April 1935. Operating expenses were larger by \$347,008 and the net operating revenue increased from \$1,108,598 to \$1,114,460. Despite a decrease of 3.1 revenue tons per train earnings increased 45 cents per freight train mile; light movement of grain was probably the chief factor in this. Gross revenues of the United States lines amounted to \$2,439,916, as against \$2,233,646 in 1934, operating expenses increased from \$1,836,034 to \$2,024,660 and the system operating income increased from \$836,014 to \$947,923.

For the four months, January - April, the Canadian lines reduced the operating income debit from \$1,196,787 to \$425,585, an improvement of \$771,202, but the United States lines showed a decline of \$88,914, making the system operating income debit \$251,658 as against \$933,946 in 1934.

CANADIAN PACIFIC RAILWAY: Gross revenues for April increased from \$9,294,417 in 1934 to \$9,956,784, or by 7.1 per cent. Operating expenses increased by \$585,900, or 7.7 per cent, and the operating income increased from \$1,270,465 to \$1,412,597. Freight carried increased by 143,243 tons, or 7.9 per cent, but the ton miles decreased by 5.5 per cent and the average revenue per ton mile increased from 0.902 cent to 1.033 cents, or by 14 per cent, due to decrease in long haul low rate freight, mostly grain. Passenger traffic, measured in passenger miles, increased by 18.9 per cent although the number of passengers carried showed practically no change.

For January to April gross revenues showed a decrease from \$36,845,622 to \$36,303,072 and, with an increase in operating expenses of \$633,551, the operating income was reduced from \$4,496,904 in 1934 to \$3,514,292.

27/6/35

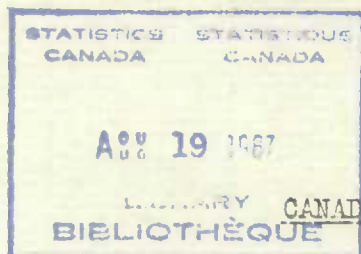
DEPARTMENT OF TRADE AND COMMERCE
DOMINION BUREAU OF STATISTICS
TRANSPORTATION AND PUBLIC UTILITIES BRANCH
OTTAWA

Dominion Statistician, R.H. Coats, LL.D., F.R.S.C., F.S.S.(Hon.).
Chief, Transportation and Public Utilities Branch, G.S. Wrong, B.Sc.

OPERATING REVENUES, EXPENSES AND STATISTICS

RAILWAYS IN CANADA

WITH ANNUAL OPERATING REVENUES OF \$500,000 OR OVER



APRIL, 1935

E R R A T A



1 9 3 4
Reads Should Read

DAILY AVERAGES PER MILE OF ROAD OPERATED

Operating revenue	\$17.26	\$17.04
Operating expenses	\$15.76	\$15.35
No. of tons moved one mile (Rev.Fr.)	1,415	1,358
No. of tons moved one mile (All Fr.)	1,598	1,542
No. of rev. passengers carried one mile	81	73

#AVERAGES PER FREIGHT TRAIN MILE

Freight revenue	\$4.63	\$4.98
No. of tons of freight (Rev.Fr.)	510.6	524.7
No. of tons of freight (All Fr.)	576.8	595.6
Gross ton miles	1343.3	1394.7
Loaded freight cars	23.8	25.0
Empty freight cars	10.1	10.6

#AVERAGES PER PASSENGER TRAIN MILE

Passenger train revenues	x \$1.73	x \$1.64
Passengers carried	39.8	37.5
Passenger cars	7.2	7.2
Average operating expenses per train mile	\$3.19	\$3.33
Average length of haul (Rev.Fr.) Miles	365.5	421.4
Average passenger journey Miles	53.3	56.9
Average tons per loaded freight car mile	24.2	23.9
Average freight receipt per revenue ton mile	.906¢	.950¢
Average passenger receipt per passenger per mile	2.430¢	2.327¢
Ratio of operating pay roll to operating revenues	56.2%	55.4%
Ratio of operating expenses to revenues	91.30%	90.11%

- Contains a proportion of mixed train miles.

x - Includes gross express revenue.

credits	\$39,516.73	\$40,797.71
---------------	-------------	-------------



1010543164

CANADIAN NATIONAL SYSTEM

(Steam Lines in Canada and United States)

APRIL, 1935

<u>OPERATING REVENUES</u>		1935	1934
Canadian Lines		\$11,566,228.00	\$11,213,358.00
Duluth, Winnipeg and Pacific		80,450.00	75,895.00
Grand Trunk Western		1,838,966.00	1,661,830.00
New England Lines		78,256.00	82,210.00
Central Vermont Railway, Inc.		442,244.00	413,711.00
Total		14,006,144.00	13,447,004.00
<u>OPERATING EXPENSES</u>			
Canadian Lines		\$10,451,767.39	\$10,104,759.28
Duluth, Winnipeg and Pacific		78,496.75	73,541.34
Grand Trunk Western		1,455,455.46	1,272,388.10
New England Lines		115,119.75	98,939.00
Central Vermont Railway, Inc.		375,588.86	391,165.86
Total		12,476,428.21	11,940,793.58
<u>NET OPERATING REVENUE</u>			
Canadian Lines		\$1,114,460.61	\$1,108,598.72
Duluth, Winnipeg and Pacific		1,953.25	2,353.66
Grand Trunk Western		383,510.54	389,441.90
New England Lines	Dr.	36,863.75	Dr. 16,729.00
Central Vermont Railway, Inc.		66,655.14	22,545.14
Total		1,529,715.79	1,506,210.42
<u>OPERATING INCOME</u>			
Canadian Lines		822,935.42	747,874.52
Duluth, Winnipeg and Pacific	Dr.	14,464.30	205.24
Grand Trunk Western		189,412.42	162,996.20
New England Lines	Dr.	87,432.49	Dr. 63,702.46
Central Vermont Railway, Inc.		37,472.21	Dr. 11,358.95
Total		947,923.26	836,014.55
<u>S U M M A R Y</u>			
For Four Months ended April 30th			
<u>ALL RAILWAYS</u>			
Operating revenues		\$90,860,919.06	\$89,688,668.47
Operating expenses		81,577,667.08	79,664,224.92
Net operating revenue		9,283,251.98	10,024,443.55
Operating income		5,620,746.71	5,971,611.29
<u>CANADIAN NATIONAL RAILWAYS</u>			
Operating revenues - Canadian Lines		\$43,338,792.00	\$42,215,202.00
United States Lines		9,043,752.00	8,598,244.00
Total		52,382,544.00	50,813,446.00
Operating expenses - Canadian Lines		42,664,272.12	41,997,624.58
United States Lines		7,701,193.73	7,244,608.87
Total		50,365,465.85	49,242,233.45
Net operating revenues - Canadian Lines		674,519.88	217,577.42
United States Lines		1,342,558.27	1,353,635.13
Total		2,017,078.15	1,571,212.55
Operating Income - Canadian Lines	Dr.	425,585.17	Dr. 1,196,787.29
United States Lines		173,926.37	262,840.98
Total	Dr.	251,658.80	Dr. 933,946.31
<u>CANADIAN PACIFIC RAILWAY</u>			
Operating revenues		\$36,303,072.52	\$36,845,622.80
Operating expenses		31,483,139.17	30,849,588.77
Net operating revenue		4,819,933.35	5,996,034.03
Operating income		3,514,292.62	4,496,904.88