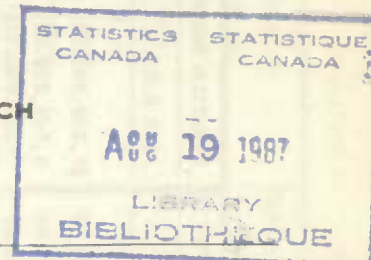


Published by Authority of the Hon. R.B. Hanson, K.C., M.P.,
Minister of Trade and Commerce

DOMINION BUREAU OF STATISTICS
TRANSPORTATION AND PUBLIC UTILITIES BRANCH
OTTAWA



Dominion Statistician, R.H. COATS, LL. D., F.R.S.C., F.S.S. (Hon.)
Chief, Transportation and Public Utilities Branch, G.S. Wrong, B.Sc.

OPERATING REVENUES, EXPENSES & STATISTICS
RAILWAYS IN CANADA
WITH ANNUAL OPERATING REVENUES OF
\$500,000 OR OVER



June, 1935.

Gross earnings of Canadian railways for June amounted to \$24,048,669 as against \$24,435,743 in 1934. Freight revenues were heavier by \$230,127 or 1.3 per cent, but passenger revenues decreased by \$496,883, or 14.3 per cent and mail and express also recorded decreases. Operating expenses increased from \$20,763,323 in 1934 to \$22,455,065 thus decreasing net operating revenues by \$2,078,815, or from \$3,672,419 to \$1,593,604.

For the six months January-June gross revenues were \$139,438,177 in 1935 and \$140,193,200 in 1934, and the operating incomes were \$8,092,238 in 1935 and \$12,421,701 in 1934.

CANADIAN NATIONAL RAILWAYS:- Canadian lines showed a decrease in gross revenues of \$451,318, or from \$11,724,637 in June, 1934 to \$11,273,319, and an increase in operating expenses of \$1,160,244, reducing the operating income from a credit of \$370,166 to a debit of \$1,168,094. The United States lines showed an increase in gross revenues of \$249,477 and an increase in operating expenses of \$120,540, making the system operating income a debit of \$1,061,816 as against a credit of \$384,930 last year.

For the first six months Canadian lines showed a decrease in gross revenues of \$270,407 and the United States lines an increase of \$916,982. Both showed increased operating expenses and the operating incomes were down for the Canadian lines by \$2,056,375 and up for the United States lines by \$149,844, making the system operating income a debit of \$1,209,655 in 1935 as against a credit of \$696,876 in 1934, a decrease of \$1,906,531.

CANADIAN PACIFIC RAILWAY:- Gross revenues for June increased by \$145,158 or from \$10,016,550 in 1934 to \$10,161,708. Operating expenses increased by \$530,038 and the operating income decreased by \$351,767 or from \$1,755,579 to \$1,403,812. Passenger traffic measured in passenger miles decreased by 33.5 per cent but freight traffic showed an increase of 9.9 per cent.

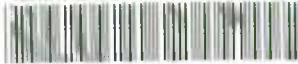
For January-June gross revenues were \$56,350,557 in 1935 and \$57,321,078 in 1934, and the operating incomes were \$6,062,018 in 1935 and \$8,054,412 in 1934.

OPERATING REVENUES, EXPENSES AND STATISTICS OF CANADIAN RAILWAYS

JUNE, 1935.

	ALL RAILWAYS		CANADIAN NATIONAL RAILWAYS		CANADIAN PACIFIC RAILWAY	
	1935	1934	1935	1934	1935	1934
OPERATING REVENUES						
Freight	\$17,624,180.57	\$17,394,053.22	\$8,195,595.00	\$8,290,844.00	\$7,388,392.34	\$7,027,793.02
Passenger	2,983,801.37	3,480,685.01	1,313,809.00	1,515,447.00	1,349,314.06	1,604,840.58
Mail	544,040.87	548,848.40	222,306.48	228,743.59	286,530.21	286,621.98
Express	1,072,391.08	1,224,477.33	x 738,835.76	x 791,791.22	270,738.14	354,406.46
Other freight train	5,018.41	3,437.89	-	167.56	1,396.83	1,944.86
Other passenger train	363,589.53	406,327.16	126,966.55	141,882.15	229,468.00	255,476.76
Water line	109,138.25	131,729.16	-	-	57,963.18	96,587.76
All other	1,346,509.49	1,247,185.14	675,807.21	755,761.48	577,905.99	388,879.31
Total railway operating revenues	24,048,669.57	24,435,743.31	x11,273,319.00	x11,724,637.00	10,161,708.81	10,016,550.73
OPERATING EXPENSES						
Maintenance of way and structures	6,093,298.98	5,182,667.86	3,807,141.22	2,978,626.58	1,861,150.25	1,816,391.81
Maintenance of equipment	4,641,523.32	4,261,355.25	2,408,569.38	2,288,228.99	1,833,251.00	1,503,345.03
Traffic	994,364.51	967,146.45	368,048.74	363,964.99	568,044.76	543,194.08
Transportation	9,521,494.78	9,156,325.75	5,020,446.39	4,803,170.38	3,664,114.09	3,557,273.36
Miscellaneous operations	212,415.42	221,785.81	81,933.27	84,297.28	99,612.62	102,948.16
General	1,043,875.88	1,000,714.08	519,238.97	506,168.23	416,707.51	385,690.91
Trans. for investment	Cr. 51,907.51	Cr. 26,671.40	Cr. 42,092.96	Cr. 21,416.21	Cr. 9,177.45	Cr. 5,178.67
Total railway operating expenses	22,455,065.38	20,763,323.80	12,163,285.01	11,003,040.24	8,433,702.78	7,903,664.68
OPERATING INCOME						
Net operating income	1,593,604.19	3,672,419.51	Dr. 889,966.01	721,596.76	1,728,006.03	2,112,886.05
Railway tax accruals	746,968.06	744,069.07	339,033.46	333,105.36	348,379.21	349,503.51
Uncollectable revenues	5,270.24	3,228.87	1,282.28	2,687.98	3,977.26	515.99
Hire of equipment	Dr. 110,609.37	Dr. 229,389.88	Cr. 61,341.44	Dr. 5,890.01	Cr. 23,131.58	Dr. 10,312.86
Joint facilities rents	Dr. 39,979.68	Dr. 59,567.67	Cr. 845.65	Dr. 9,747.21	Cr. 5,031.15	Cr. 3,026.08
Operating income	690,776.84	2,636,164.02	Dr. 1,168,094.66	370,166.20	1,403,812.29	1,755,579.77
OPERATING STATISTICS						
Average miles of road operated	42,339.83	42,225.36	21,925.88	21,940.40	17,210.6	17,017.7
No. of tons carried (Rev.Fr.)	5,795,759	5,676,948	2,227,306	2,259,097	1,897,171	1,875,907
No. of tons carried one mile " "	1,860,474,688	1,720,649,893	872,619,825	799,455,040	822,467,505	748,419,873
No. of tons carried one mile (All Fr.)	2,118,367,464	1,982,238,070	1,018,064,543	927,823,597	931,705,134	877,280,199
Gross ton miles, exclusive of locomotive & tender	4,920,971,000	4,804,663,000	2,332,237,526	2,215,295,195	2,047,496,712	1,995,385,093
No. of revenue passengers carried	1,395,775	1,553,314	657,127	730,478	554,142	612,882
No. of revenue passengers carried one mile	133,956,354	182,554,067	59,308,898	73,876,849	61,524,225	92,560,971
#Freight train miles	3,415,042	3,418,919	1,639,224	1,600,749	1,424,852	1,435,483
#Passenger train miles	2,847,891	2,888,472	1,316,425	1,326,923	1,314,034	1,341,582
Total train miles (Rev. & Non Rev.)	6,459,402	6,454,209	3,104,343	3,020,628	2,773,952	2,814,960
Freight car miles-loaded	85,537,874	82,422,805	41,189,125	38,399,856	34,676,676	33,659,222
Freight car miles-empty	38,111,410	41,971,296	17,229,905	18,906,179	15,415,426	16,459,234
Passenger train car miles	21,608,494	22,138,784	10,043,320	9,987,149	9,525,040	9,915,505
Total amount of pay roll	\$13,749,420.12	\$12,984,918.54	\$7,458,920	\$6,959,778	\$5,423,435.59	\$5,184,910.44
Number of employees	123,157	121,322	66,685	64,569	49,374	49,472
Pay roll chargeable to rly operating expenses	\$13,152,827.54	\$12,456,779.38	\$6,919,885	\$6,478,231	\$5,392,630.64	\$5,166,082.59
DAILY AVERAGES PER MILE OF ROAD OPERATED						
Operating revenue	\$18.93	\$19.29	\$17.14	\$17.81	\$19.68	\$19.62
Operating expenses	\$17.68	\$16.39	\$18.49	\$16.72	\$16.33	\$15.48
No. of tons moved one mile (Rev.Fr.)	1,465	1,358	1,327	1,215	1,593	1,466
No. of tons moved one mile (All Fr.)	1,668	1,565	1,548	1,410	1,805	1,718
No. of rev. passengers carried one mile	105	144	90	112	119	181
#AVERAGES PER FREIGHT TRAIN MILE						
Freight revenue	\$5.16	\$5.09	\$5.00	\$5.18	\$5.19	\$4.90
No. of tons of freight (Rev.Fr.)	544.8	503.3	532.3	499.4	577.2	521.4
No. of tons of freight (All Fr.)	620.3	579.8	621.1	579.6	653.9	611.1
Gross ton miles	1441.0	1405.3	1422.8	1383.9	1437.0	1390.0
Loaded freight cars	25.0	24.1	25.1	24.0	24.3	23.4
Empty freight cars	11.2	12.3	10.5	11.8	10.8	11.5
#AVERAGES PER PASSENGER TRAIN MILE						
Passenger train revenues	\$1.74	\$1.96	x \$1.82	x \$2.02	\$1.63	\$1.86
Passengers carried	47.0	63.2	45.1	55.7	46.8	69.0
Passenger cars	7.6	7.7	7.6	7.5	7.2	7.4
Average operating expenses per train mile	\$3.48	\$3.22	\$3.92	\$3.64	\$3.04	\$2.81
Average length of haul (Rev. Fr.) Miles	321.0	303.1	391.8	353.9	433.5	399.0
Average passenger journey Miles	96.0	117.5	90.3	101.1	111.0	151.0
Average tons per loaded freight car mile	24.8	24.0	24.7	24.2	26.9	26.1
Average freight receipt per revenue ton mile	.948¢	1.011¢	.939¢	1.037¢	.898¢	.939¢
Average passenger receipt per passenger per mile	2.227¢	1.907¢	2.215¢	2.061¢	2.193¢	1.734¢
Ratio of operating pay roll to operating revenues	54.7%	51.0%	61.4%	55.3%	53.1%	51.6%
Ratio of operating expenses to revenues	93.37%	84.97%	107.89%	93.85%	82.99%	78.91%

- Contains a proportion of mixed train miles. x - Includes gross express revenue. / Includes misc. credits..... \$59,187.51 \$57,913.01



1010543168

CANADIAN NATIONAL SYSTEM

(Steam Lines in Canada and United States)

For the Month of June, 1935

OPERATING REVENUES		1934	1935
Canadian Lines		\$11,273,319.00	\$11,724,637.00
Duluth Winnipeg and Pacific		81,874.00	67,062.00
Grand Trunk Western		1,759,351.00	1,608,980.00
New England Lines		83,668.00	82,438.00
Central Vermont Railway, Inc.		516,394.00	432,330.00
Total		\$13,713,606.00	\$13,915,447.00
OPERATING EXPENSES			
Canadian Lines		\$12,163,285.01	\$11,003,040.24
Duluth Winnipeg and Pacific		99,313.49	80,061.81
Grand Trunk Western		1,408,656.72	1,308,002.85
New England Lines		124,313.06	104,799.60
Central Vermont Railway, Inc.		412,370.63	431,249.67
Total		\$14,207,938.91	\$12,927,154.17
NET OPERATING REVENUE			
Canadian Lines	Dr. \$	889,966.01	\$ 721,596.76
Duluth Winnipeg and Pacific	Dr.	17,439.49	Dr. 12,999.81
Grand Trunk Western		350,694.28	300,977.15
New England Lines	Dr.	40,645.06	Dr. 22,361.60
Central Vermont Railway, Inc.		103,023.37	1,080.33
Total	Dr. \$	494,332.91	988,292.83
OPERATING INCOME			
Canadian Lines	Dr. \$	1,168,094.66	\$ 370,166.20
Duluth Winnipeg and Pacific	Dr.	30,506.80	Dr. 10,742.49
Grand Trunk Western		161,873.26	119,419.59
New England Lines	Dr.	92,317.65	Dr. 66,716.90
Central Vermont Railway, Inc.		77,229.57	Dr. 27,195.49
Total	Dr. \$	1,061,816.28	\$ 584,930.91
SUMMARY			
For Six Months ended June 30th.			
ALL RAILWAYS			
Operating revenues		\$139,438,177.18	\$140,193,200.34
Operating expenses		125,871,344.94	121,667,566.66
Net operating revenues		13,566,832.24	18,525,633.68
Operating income		8,092,238.92	22,421,701.33
CANADIAN NATIONAL RAILWAYS			
Operating revenues - Canadian Lines		\$66,306,018.00	\$66,578,425.00
United States Lines		13,835,304.00	12,918,322.00
Total		80,143,322.00	79,496,747.00
Operating expenses - Canadian Lines		66,260,969.43	64,046,679.34
United States Lines		11,703,288.51	11,071,527.06
Total		77,964,257.94	75,118,206.40
Net operating revenues - Canadian Lines		47,048.57	2,531,745.66
United States Lines		2,132,015.49	1,846,794.94
Total		2,179,064.06	4,378,540.60
Operating income - Canadian Lines	Dr.	1,609,710.99	446,664.75
United States Lines		400,055.67	250,211.74
Total	Dr.	1,209,655.32	696,876.49
CANADIAN PACIFIC RAILWAY			
Operating revenues		\$56,350,557.74	\$57,321,078.00
Operating expenses		48,336,172.23	47,060,753.17
Net operating revenues		8,014,385.51	10,270,324.83
Operating income		6,062,018.52	8,064,412.55