

CATALOGUE No.

52-003

MONTHLY

# DOMINION BUREAU OF STATISTICS

OTTAWA - CANADA

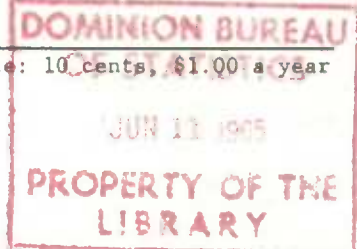
Published by Authority of the Minister of Trade and Commerce

Vol. 44, No. 12

Price: 10 cents, \$1.00 a year

## RAILWAY OPERATING STATISTICS

DECEMBER 1964



Presented in this report are the December 1964 financial statistics and the November 1964 traffic statistics of class 1 and 2 railways (the C.N.R., C.P.R and other lines having average gross revenues of \$500,000 or more annually). Excluded are details of class 3 and 4 roads (those with revenues of less than \$500,000) whose operations represent about one per cent of all common carrier railways.

While traffic statistics of the Cartier Railway Company are being included in certain other rail transport reports, they are omitted from this series because relative financial data is not available.

### Financial Statistics

Canadian common carrier railway operating revenues increased 2.4 per cent to \$106,739,714 while operating expenses rose 4.8 per cent to \$104,049,567. This resulted in a total net operating income of \$2,690,147 as compared to \$4,986,308 in December 1963. The December 1964 railway operating expenses amounted to 97.48 cents per dollar of revenue.

Canadian lines of the Canadian National Railways experienced a 1.0 per cent decline in operating revenues to \$53,494,206 and a 5.8 per cent rise in operating expenses to \$54,999,578 in December 1964. As a result, a net operating loss of \$1,505,372 was recorded in contrast to a gain of \$2,062,508 a year earlier. The Canadian Pacific Railway Company reported a 5.8 per cent rise in December 1964 revenues to \$41,656,710, and a 0.8 per cent drop in operating expenses to \$37,030,037. The C.P.R. net operating income totalled \$4,626,673, up from \$2,048,701 in December 1963.

Rail operating revenues, which comprise railway, express, commercial communications and high-way transport (rail) service revenues, rose 3.6 per cent to \$119,429,080. Operating expenses were higher by 6.3 per cent, rising to \$116,117,895 and, as a result, the net rail operating income dropped to \$3,311,185 from \$5,966,537 in the preceding year.

### Traffic Statistics

During November 1964, the railways carried 17.5 million tons of revenue freight, an increase of 6.7 per cent from the same period in 1963. For a more complete analysis and provincial breakdown of commodity statistics see the monthly series entitled "Freight Traffic", catalogue number 52-002. The number of revenue ton-miles dropped 2.0 per cent to 6,816 million in November 1964, while the average length of haul was down to 390 miles from 425. The average revenue per ton-mile of freight rose to 1.411 cents from 1.338. The number of passengers carried during the month of November rose 6.2 per cent to 1,849 thousand and passenger-miles increased 1.6 per cent to 159 million. The average passenger journey dropped to 86 miles from 90 while the average revenue earned per passenger-mile rose to 2.304 cents from 2.267.

Public Finance and Transportation Division  
Transportation Section

June 1965  
8504-505

# RAILWAY FINANCIAL OPERATING STATISTICS

December 1964

	Total 22 railways		Canadian National Railways		Canadian Pacific Railway Company	
	1964	1963 <sup>r</sup>	1964	1963 <sup>r</sup>	1964	1963
	dollars					
<b>RAILWAY</b>						
Operating revenues:						
Freight .....	93,502,068	89,611,720	46,652,395(1)	46,049,757(2)	36,010,946(1)	33,632,611(2)
Passenger .....	6,335,471	6,275,938	3,487,781	3,444,930	2,681,324	2,635,037
Sleeping and parlour car .....	859,100	651,632	540,164	350,651	302,541	279,068
Mail .....	1,888,701	1,842,163	1,101,159	1,093,540	591,032	591,801
Express .....	Dr. 274,648	975,758	Dr. 308,785	773,507	Dr. 149,067	69,103
Switching .....	627,220	593,631	234,561	255,951	241,129	168,449
Incidental .....	3,671,488	4,090,409	1,740,700	2,072,480	1,839,356	1,829,325
All other .....	130,314	244,338	46,231	16,840	139,449	167,663
Totals .....	106,739,714	104,285,589	53,494,206	54,057,656	41,656,710	39,373,057
Operating expenses:						
Road maintenance .....	21,246,501	21,704,870	11,265,902	11,037,543	7,373,105	8,638,172
Equipment maintenance .....	24,997,407	25,867,629	14,870,615	12,077,882	8,341,175	12,113,951
Traffic .....	3,003,956	2,788,433	1,940,435	1,610,968	875,703	1,036,896
Transportation (railway line) ....	41,121,229	38,328,198	21,251,102	20,350,984	15,925,628	14,663,449
Miscellaneous railway operations .	1,781,065	1,545,003	1,037,689	764,868	710,182	736,793
General .....	10,434,171	8,787,231	5,681,828	4,732,931	3,559,821	3,277,998
Equipment rents .....	Cr. 225,266	Cr. 9,327	Cr. 685,591	Cr. 311,688	Cr. 407,239	Cr. 366,416
Joint facility rents .....	Cr. 34,898	52,154	Cr. 9,558	Cr. 11,911	Cr. 61,675	6,429
Railway tax accruals .....	1,725,402	235,090	Cr. 352,844	1,743,571	713,337	Cr. 2,782,916
Totals .....	104,049,567	99,299,281	54,999,578	51,995,148	37,030,037	37,324,356
Net railway operating income .....	2,690,147	4,986,308	Dr. 1,505,372	2,062,508	4,626,673	2,048,701

(1) Includes accruals related to the recommendations of the MacPherson Royal Commission and under the Freight Rate Reduction Act.

(2) Includes payments related to the recommendations of the MacPherson Royal Commission and under the Freight Rate Reduction Act.

<sup>r</sup> Revised figures.

## RAIL FINANCIAL OPERATING STATISTICS

December 1964

	Total 22 railways		Canadian National Railways		Canadian Pacific Railway Company	
	1964	1963 <sup>r</sup>	1964	1963 <sup>r</sup>	1964	1963
	dollars					
<b>RAIL</b>						
Operating revenues:						
Railway .....	106,739,714	104,285,589	53,494,206	54,057,656	41,656,710	39,373,057
Express .....	6,617,777	5,305,906	4,396,143	3,341,617	2,199,053	1,944,862
Commercial communications .....	5,688,201	5,330,359	3,434,000	3,309,000	1,773,834	1,630,903
Highway transport (rail) .....	383,388	306,040	346,356	274,203	17,760	20,202
Totals .....	119,429,080	115,227,894	61,670,705	60,982,476	45,647,357	42,969,024
Operating expenses:						
Railway .....	104,049,567	99,299,281	54,999,578	51,995,148	37,030,037	37,324,356
Express .....	6,552,091	5,225,215	4,348,138	3,281,550	2,180,378	1,923,697
Commercial communications .....	5,262,681	4,465,590	3,356,816	2,669,222	1,636,604	1,506,366
Highway transport (rail) .....	253,556	271,271	220,006	243,114	16,141	16,040
Totals .....	116,117,895	109,261,357	62,924,538	58,189,034	40,863,160	40,770,459
Net rail operating income:						
Railway .....	2,690,147	4,986,308	Dr. 1,505,372	2,062,508	4,626,673	2,048,701
Express .....	65,686	80,691	48,005	60,067	18,675	21,165
Commercial communications .....	425,520	864,769	77,184	639,778	137,230	124,537
Highway transport (rail) .....	129,832	34,769	126,350	31,089	1,619	4,162
Totals .....	3,311,185	5,966,537	Dr. 1,253,833	2,793,442	4,784,197	2,198,565

<sup>r</sup> Revised figures.

RAIL FINANCIAL OPERATING STATISTICS  
December 1964

Railway	Operating revenues		Operating expenses		Net rail operating income	
	1964	1963	1964	1963 <sup>r</sup>	1964	1963 <sup>r</sup>
dollars						
Algoma Central & Hudson Bay Railway Co. ....	939,360	831,927	801,170	691,259	138,190	140,668
Alma & Jonquieres Railway Co. ....	52,392	57,949	50,227	51,969	2,165	5,980
British Columbia Hydro and Power Authority .....	346,726	339,933	230,374	225,558	116,352	114,375
Canada Southern Railway Co. (Michigan Central)(1) .....	1,900,375	1,440,042	1,677,998	1,447,678	222,377	Dr. 7,636
Canadian National Railways .....	61,670,705	60,982,476	62,924,538	58,189,034	Dr. 1,253,833	2,793,442
Canadian Pacific Railway Co. ....	45,647,357	42,969,024	40,863,160	40,770,459	4,784,197	2,198,565
Chesapeake & Ohio Railway Co. ....	1,156,933	1,233,957	1,130,913	935,907	26,020	298,050
Cumberland Railway Co. ....	301,556	221,979	256,187	291,731	45,369	Dr. 59,752
Essex Terminal Railway Co. ....	78,733	78,523	125,012	122,196	Dr. 46,279	Dr. 43,673
Grand Falls Central Railway Co. ....	142,014	137,187	96,686	91,800	45,328	45,387
Great Northern Railway Co.(1) .....	172,367	151,669	134,044	203,048	38,323	Dr. 51,379
Midland Railway of Manitoba(1) .....	35,889	41,096	96,150	106,001	Dr. 60,261	Dr. 64,905
Napierville Junction Railway Co. ....	83,676	85,502	72,120	84,639	11,556	863
Norfolk and Western Railway Company (formerly Wabash Railroad Co.) ....	941,460	985,160	1,032,258	801,929	Dr. 90,798	183,231
Northern Alberta Railways Co. ....	624,090	602,932	684,952	639,235	Dr. 60,862	Dr. 36,303
Ontario Northland Railway Co. ....	1,286,388	1,183,420	1,232,427	1,218,343	53,961	Dr. 34,923
Pacific Great Eastern Railway Co. ...	1,573,153	1,190,971	1,028,037	706,609	545,116	484,362
Quebec North Shore & Labrador Railway Co. ....	1,818,625	1,844,148	2,910,576	1,929,633	Dr. 1,091,951	Dr. 85,485
Roberval & Saguenay Railway Co. ....	192,229	220,653	173,587	196,634	18,642	24,019
St. Lawrence & Adirondack Railway Co.(1) .....	75,884	75,179	78,208	77,830	Dr. 2,324	Dr. 2,651
Toronto, Hamilton & Buffalo Railway Co. ....	476,257	441,059	414,395	386,625	61,862	54,434
White Pass & Yukon Route (lines in Canada) .....	Dr. 87,089	113,108	104,876	93,240	Dr. 191,965	19,868
Totals .....	119,429,080	115,227,894	116,117,895	109,261,357	3,311,185	5,966,537

(1) Financial results are those for November.

<sup>r</sup> Revised figures.

RAIL FINANCIAL OPERATING STATISTICS  
January 1 to December 31, 1964(1)

RAIL	Total 22 railways		Canadian National Railways		Canadian Pacific Railway Company	
	1964	1963	1964(2)	1963(2)	1964	1963 <sup>r</sup>
dollars						
Operating revenues:						
Railway .....	1,313,120,955	1,208,270,765	645,446,297	592,756,038	501,431,063	471,831,921
Express .....	61,130,393	58,813,112	37,156,541	37,198,030	23,735,589	21,379,248
Commercial communications .....	65,045,045	60,475,098	39,852,000	37,169,000	20,195,635	19,105,064
Highway transport (rail) .....	3,998,864	3,354,764	3,556,265(3)	2,993,276(3)	252,229	240,932
Totals .....	1,443,295,257	1,330,913,739	726,011,103	670,116,344	545,614,516	512,557,165
Operating expenses:						
Railway .....	1,237,610,263	1,151,085,698	632,929,163	586,923,034	462,490,673	439,461,408
Express .....	60,497,185	58,097,414	36,663,496	36,624,628	23,588,589	21,231,948
Commercial communications .....	58,505,837	53,507,814	36,296,309	32,660,113	19,061,607	17,966,015
Highway transport (rail) .....	3,321,458	2,945,398	2,905,215(3)	2,599,023(3)	228,874	213,618
Totals .....	1,359,934,743	1,265,636,324	708,794,183	658,806,798	505,369,743	478,872,989
Net rail operating income:						
Railway .....	75,510,692	57,185,067	12,517,134	5,833,004	38,940,390	32,370,513
Express .....	633,208	715,698	493,045	573,402	147,000	147,300
Commercial communications .....	6,539,208	6,967,284	3,555,691	4,508,887	1,134,028	1,139,049
Highway transport (rail) .....	677,406	409,366	651,050(3)	394,253(3)	23,355	27,314
Totals .....	83,360,514	65,277,415	17,216,920	11,309,546	40,244,773	33,684,176

(1) Based on cumulative monthly returns and subject to year-end adjustments, except where restated.

(2) Restated.

(3) Includes Canadian National Transportation Limited, only.

<sup>r</sup> Revised figures.





1010640732

- 4 -

RAILWAY OPERATING STATISTICS  
November 1964

	Total 22 railways		Canadian National Railways		Canadian Pacific Railway Company	
	1964	1963 <sup>r</sup>	1964	1963 <sup>r</sup>	1964	1963 <sup>r</sup>
Miles of road operated (monthly average) .....	44,237.73	44,210.26	23,021.50	22,971.83	16,678.00	16,700.30
Freight traffic:						
Tons carried - Revenue freight(1) .....	17,455,250	16,356,792	7,053,992	6,495,905	5,681,558	5,451,154
Ton-miles - Revenue freight .....(000)	6,815,700	6,954,504	3,372,451	3,599,596	2,796,655	2,833,980
Ton-miles - Revenue and non-revenue freight .....(000)	6,971,267	7,098,865	3,468,314	3,688,674	2,848,398	2,884,730
Passenger traffic:						
Revenue passengers(1) .....	1,849,205	1,741,908	1,220,034	1,104,302	564,230	565,150
Revenue passenger-miles .....(000)	159,309	156,765	94,507	86,914	57,304	63,318
Gross ton-miles:						
Freight train .....(000)	14,520,063	14,934,094	7,293,360	7,791,025	5,889,798	6,006,756
Passenger train .....(000)	1,515,860	1,456,190	942,869	847,992	477,258	506,414
Totals .....(000)	16,035,923	16,390,284	8,236,229	8,639,017	6,367,056	6,513,170
Train-miles:						
Freight service .....	5,443,591	5,519,194	2,861,114	2,936,099	2,092,560	2,128,601
Passenger service .....	2,313,076	2,218,906	1,437,129	1,248,684	715,491	789,447
Work service .....	107,966	136,457	79,440	121,072	7,768	5,880
Totals .....	7,864,633	7,874,557	4,377,683	4,305,855	2,815,819	2,923,928
Car-miles:						
Freight:						
Loaded .....	188,065,793	193,981,490	96,625,917	100,795,169	75,751,144	78,879,170
Empty .....	112,702,981	122,197,017	56,797,985	66,893,483	45,375,580	46,176,619
Caboose .....	5,769,982	5,863,888	3,000,847	3,045,069	2,281,440	2,375,564
Totals .....	306,538,756	322,042,395	156,424,749	170,733,721	123,408,164	127,431,353
Passenger .....	23,920,271	23,205,574	14,759,152	13,447,841	7,563,042	7,710,726
Total transportation service .....	330,459,027	345,247,969	171,183,901	184,181,562	130,971,206	135,142,079
Number of employees - Railway .....	132,986	130,380	74,193	71,716	49,662	49,980
Payroll - Railway ..... \$	57,031,420	52,736,974	31,970,422	28,658,848	20,685,275	20,024,959
Payroll chargeable to railway operating expenses ..... \$	52,599,953	49,200,982	29,395,352	26,816,732	19,153,059	18,527,037

(1) Includes traffic handled by more than one road.  
<sup>r</sup> Revised figures.

RAILWAY OPERATING STATISTICS  
November 1964

	Total 22 railways		Canadian National Railways		Canadian Pacific Railway Company	
	1964	1963 <sup>r</sup>	1964	1963	1964	1963 <sup>r</sup>
Averages per day per mile of road operated:						
Operating revenues ..... \$	80.79	78.57	77.21	73.81	81.14	85.47
Operating expenses ..... \$	76.11	74.00	75.30	70.63	75.53	78.31
Ton-miles - Revenue freight .....	5,136	5,244	4,883	5,223	5,590	5,657
Ton-miles - All freight .....	5,253	5,352	5,022	5,352	5,693	5,758
Passenger-miles - Revenue .....	120	118	137	126	115	126
Averages per freight train mile:						
Freight revenue ..... \$	17.67	16.86	16.57	15.29	17.42	18.07
Tons carried - Revenue freight .....	1,252	1,260	1,179	1,226	1,336	1,331
Tons carried - All freight .....	1,281	1,286	1,212	1,256	1,361	1,355
Freight cars - Loaded .....	34.5	35.1	33.8	34.3	36.2	37.1
Freight cars - Empty .....	20.7	22.1	19.9	22.8	21.7	21.7
Averages per passenger train mile:						
Passengers carried .....	69	71	66	70	80	80
Passenger cars .....	10.3	10.5	10.3	10.8	10.6	9.8
Miscellaneous averages:						
Operating expense per train-mile ..... \$	12.84	12.46	11.88	11.30	13.42	13.42
Miles hauled - Revenue freight .....	390	425	478	554	492	520
Miles carried - Revenue passengers .....	86	90	77	79	106	112
Tons carried per loaded freight-car-mile .....	37.1	36.6	35.9	36.6	37.6	36.6
Revenue per ton-mile of freight ..... ¢	1.411	1.338	1.405	1.247	1.303	1.357
Revenue per passenger per mile ..... ¢	2.304	2.267	2.337	2.378	2.279	2.078
Ratio of operating payroll to operating revenues %	49.06	47.21	55.13	52.72	47.18	43.27
Ratio of operating expenses to operating revenues %	94.21	94.18	97.54	95.70	93.08	91.63

<sup>r</sup> Revised figures.