

CATALOGUE No.

52-003

MONTHLY

DOMINION BUREAU OF STATISTICS

OTTAWA - CANADA

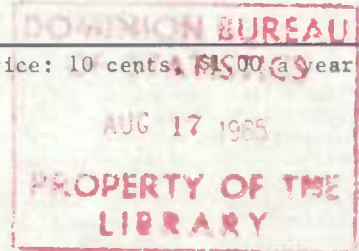
Published by Authority of the Minister of Trade and Commerce

Vol. 45, No. 3

Price: 10 cents, \$15.00 a year

Railway Operating Statistics

MARCH 1965



Presented in this report are the March 1965 financial results and the February 1965 traffic statistics of class 1 and 2 railways (the C.N.R., C.P.R. and other lines having average gross revenues of \$500,000 or more annually). Excluded are details of class 3 and 4 roads (those with revenues of less than \$500,000) whose operations represent about one per cent of all common carrier railways.

Traffic results of the Cartier Railway Company, which operates in the province of Quebec, are included in certain other rail transport reports, but are omitted from this particular series because relative financial data is not available.

Financial Statistics

Canadian common carrier railway operating revenues in March 1965 increased 7.0 per cent to \$116,660,330 from the preceding year, while operating expenses rose 9.5 per cent to \$108,684,445. This resulted in a total net operating income of \$7,975,885 as compared to \$9,765,327 in March 1964. March 1965 railway operating expenses amounted to 93.16 cents per dollar of revenue.

Canadian lines of the Canadian National Railways experienced a 9.2 per cent increase in operating revenues to \$59,315,259 and a 12.1 per cent rise in operating expenses to \$57,359,865. This resulted in a net operating income of \$1,955,394 as compared to \$3,122,496 a year earlier. The Canadian Pacific Railway Company reported a 3.4 per cent increase in March 1965 revenues to \$44,766,201, and a 5.6 per cent rise in operating expenses to \$40,054,310. The C.P.R. net operating income totalled \$4,711,891 down from \$5,360,486 in March 1964.

Rail operating revenues, which comprise railway, express, commercial communications and highway transport (rail) service revenues increased 7.1 per cent to \$127,847,604. Operating expenses were higher by 9.1 per cent, rising to \$119,157,485 resulting in a net income of \$8,690,119 as compared to \$10,226,857 in the preceding year.

Traffic Statistics

During February 1965, the railways carried 14.8 million tons of revenues freight, an increase of 3.5 per cent from the same period in 1964. For a more complete analysis and provincial breakdown of commodity statistics see the monthly series entitled "Freight Traffic", catalogue number 52-002. The number of revenue ton-miles dropped 7.4 per cent to 6,012 million in February 1965, while the average length of haul dropped to 405 miles from 453. The average revenue per ton-mile of freight rose to 1.448 cents from 1.397. The number of passengers carried during the month of February rose 7.6 per cent to 1,899 thousand while passenger-miles dropped 2.5 per cent to 156 million. The average passenger journey was down to 82 miles from 91, while the average revenue earned per passenger-mile increased to 2.491 cents from 2.442.

Public Finance and Transportation Division
Transportation Section

August 1965
8504-505

TABLE 1. Railway Operating Revenues, Expenses and Net Income
March 1965

	Total		Canadian National Railways		Canadian Pacific Railway Company	
	24 railways	22 railways				
	1965	1964 ^r	1965	1964	1965	1964 ^r
	dollars					
Operating revenues:						
Freight	104,448,573	97,148,578	52,698,704(1)	48,082,352(1)	39,976,268(1)	38,418,984(1)
Passenger	3,963,108	4,526,164	2,314,184	2,625,979	1,513,685	1,739,828
Sleeping and parlour car	488,161	617,643	204,176	340,073	261,683	253,734
Mail	1,379,508	1,356,561	808,517	779,815	403,027	421,156
Express	1,800,523	1,374,195	1,115,821	808,837	532,152	456,003
Switching	761,998	726,104	289,907	262,732	300,860	277,161
Incidental	3,545,431	3,167,012	1,809,557	1,456,359	1,631,614	1,594,236
All other	273,028	133,785	74,393	Dr. 55,802	146,912	129,278
Totals	116,660,330	109,050,042	59,315,259	54,300,345	44,766,201	43,290,380
Operating expenses:						
Road maintenance	20,299,113	18,856,949	11,268,204	10,368,379	6,740,540	6,296,709
Equipment maintenance	24,753,686	23,221,783	13,685,868	12,740,935	8,958,808	8,574,526
Traffic	2,990,322	2,589,314	1,627,560	1,315,920	1,191,085	1,084,528
Transportation (railway line)	42,104,236	38,370,613	22,595,176	20,097,111	15,910,748	14,930,337
Miscellaneous railway operations	1,673,617	1,354,544	985,401	617,891	661,938	710,817
General	9,715,793	9,067,621	5,530,741	4,973,947	3,448,705	3,310,252
Equipment rents	945,683	484,303	165,443	Cr. 171,892	Cr. 267,705	Cr. 209,407
Joint facility rents	185,234	48,539	Cr. 12,922	Cr. 153,664	73,391	92,127
Railway tax accruals	6,016,761	5,291,049	1,514,394	1,389,222	3,336,800	3,140,005
Totals	108,684,445	99,284,715	57,359,865	51,177,849	40,054,310	37,929,894
Net operating income	7,975,885	9,765,327	1,955,394	3,122,496	4,711,891	5,360,486

(1) Includes payments related to the recommendations of the MacPherson Royal Commission and under the Freight Rates Reduction Act.

^r Revised figures.

TABLE 2. Rail Operating Revenues, Expenses and Net Income
March 1965

	Total		Canadian National Railways		Canadian Pacific Railway Company	
	24 railways	22 railways				
	1965	1964 ^r	1965	1964	1965	1964 ^r
	dollars					
Operating revenues:						
Railway	116,660,330	109,050,042	59,315,259	54,300,345	44,766,201	43,290,380
Express	5,146,106	4,703,850	3,091,589	2,828,918	2,035,342	1,857,717
Commercial communications	5,723,775	5,298,171	3,520,000	3,297,000	1,760,989	1,617,078
Highway transport (rail)	317,393	370,342	274,116	341,952	26,293	17,832
Totals	127,847,604	119,422,405	66,200,964	60,768,215	48,588,825	46,783,007
Operating expenses:						
Railway	108,684,445	99,284,715	57,359,865	51,177,849	40,054,310	37,929,894
Express	5,086,904	4,642,752	3,051,644	2,782,291	2,015,240	1,842,271
Commercial communications	5,106,948	4,745,483	3,142,439	2,949,993	1,685,242	1,531,191
Highway transport (rail)	279,188	522,598	240,887	489,690	20,471	19,279
Totals	119,157,485	109,195,548	63,794,835	57,399,823	43,775,263	41,322,635
Net operating income:						
Railway	7,975,885	9,765,327	1,955,394	3,122,496	4,711,891	5,360,486
Express	59,202	61,098	39,945	46,627	20,102	15,446
Commercial communications	616,827	552,688	377,561	347,007	75,747	85,887
Highway transport (rail)	38,205	Dr. 152,256	33,229	Dr. 147,738	5,822	Dr. 1,447
Totals	8,690,119	10,226,857	2,406,129	3,368,392	4,813,562	5,460,372

^r Revised figures.

TABLE 3. Rail Operating Revenues, Expenses and Net Income, by Railway
March 1965

Railway	Operating revenues		Operating expenses		Net rail operating income	
	1965	1964 ^r	1965	1964 ^r	1965	1964 ^r
	dollars					
Algoma Central & Hudson Bay Rly. Co.	926,031	924,606	770,563	765,081	155,468	159,525
Alma & Jonquieres Railway Co.	58,884	56,326	50,863	48,696	8,021	7,630
Arnaud Railway Company	37,198	-	49,884	-	Dr. 12,686	-
British Columbia Hydro and Power Authority	397,676	444,528	292,078	265,331	105,598	179,197
Canada Southern Railway Co. (Michigan Central)(1)	1,729,168	1,697,675	1,536,213	1,512,144	192,955	185,531
Canadian National Railways	66,200,964	60,768,215	63,794,835	57,399,823	2,406,129	3,368,392
Canadian Pacific Railway Co.	48,588,825	46,783,007	43,775,263	41,322,635	4,813,562	5,460,372
Chesapeake & Ohio Railway Co.	1,633,951	1,387,705	1,239,247	1,034,847	394,704	352,858
Cumberland Railway Co.	309,392	213,280	370,458	272,332	Dr. 61,066	Dr. 59,052
Essex Terminal Railway Co.	95,024	67,799	86,569	50,325	8,455	17,474
Grand Falls Central Railway Co.	88,041	95,973	64,034	67,810	24,007	28,163
Great Northern Railway Co.	161,424	167,111	197,226	200,287	Dr. 35,802	Dr. 33,176
Midland Railway of Manitoba	46,203	42,575	99,887	98,829	Dr. 53,684	Dr. 56,254
Napierville Junction Railway Co.	90,231	75,494	86,127	76,306	4,104	812
Norfolk and Western Railway Company(2)	856,395	1,080,068	8,391,922	1,074,825	16,473	5,243
Northern Alberta Railways Co.	1,014,811	611,552	779,302	617,096	235,509	Dr. 5,544
Ontario Northland Railway Co.	1,423,904	1,213,408	1,307,555	1,202,432	116,349	10,976
Pacific Great Eastern Railway Co. ...	1,444,682	1,333,526	1,169,993	987,796	274,689	345,730
Quebec North Shore & Labrador Rly. Co.	1,838,712	1,609,568	1,752,053	1,445,149	86,659	164,419
Roberval & Saguenay Railway Co.	199,129	179,595	171,752	160,670	27,377	18,925
St. Lawrence & Adirondack Rly. Co.(1)	81,000	82,386	83,044	82,660	Dr. 2,044	Dr. 274
Toronto, Hamilton & Buffalo Rly. Co.	484,126	473,911	434,326	425,539	49,800	48,372
Wabush Lake Railway Company	43,230	-	116,021	-	Dr. 72,791	-
White Pass & Yukon Route (lines in Canada)	98,603	114,097	90,270	84,935	8,333	29,162
Totals	127,847,604	119,422,405	119,157,485	109,195,548	8,690,119	10,226,857

(1) Financial results are those for February.

(2) Formerly Wabash Railway Company.

^r Revised figures.

TABLE 4. Cumulative Rail Operating Revenues, Expenses and Net Income
January 1 to March 31, 1965

	Total		Canadian National Railways		Canadian Pacific Railway Company	
	24 railways	22 railways	Railways			
	1965	1964 ^r	1965	1964 ^r	1965	1964 ^r
	dollars					
Operating revenues:						
Railway	316,061,217	315,310,393	158,323,796	154,720,618	124,688,296	127,136,278
Express	14,922,931	14,069,318	8,900,118	8,425,571	5,969,473	5,593,627
Commercial communications	16,588,174	15,523,173	10,180,000	9,622,000	5,129,247	4,788,311
Highway transport (rail)	960,966	1,047,296	836,976	959,711	71,663	59,994
Totals	348,533,288	345,950,180	178,240,890	173,727,900	135,858,679	137,578,210
Operating expenses:						
Railway	313,182,597	297,930,483	164,130,383	151,594,085	117,128,348	116,696,632
Express	14,787,712	13,918,281	8,800,944	8,305,248	5,929,721	5,560,364
Commercial communications	14,927,459	13,798,028	9,210,112	8,545,502	4,890,865	4,506,062
Highway transport (rail)	784,531	1,323,930	671,634	1,231,849	61,416	57,494
Totals	343,682,299	326,970,722	182,813,073	169,676,684	128,010,350	126,820,552
Net operating income:						
Railway	2,878,620	17,379,910	Dr. 5,806,587	3,126,533	7,559,948	10,439,646
Express	135,219	151,037	99,174	120,323	39,752	33,263
Commercial communications	1,660,715	1,725,145	969,888	1,076,498	238,382	282,249
Highway transport (rail)	176,435	Dr. 276,634	165,342	Dr. 272,138	10,247	2,500
Totals	4,850,989	18,979,458	Dr. 4,572,183	4,051,216	7,848,329	10,757,658

^r Revised figures.



1010640735

TABLE 5. Railway Traffic and Employment Statistics
February 1965

	Total		Canadian National Railways		Canadian Pacific Railway Company	
	24 railways	22 railways	Railways		Company	
	1965	1964 ^r	1965	1964	1965	1964
Miles of road operated (monthly average) ..	44,282.83	44,302.23	23,007.02	23,074.00	16,677.50	16,690.00
Freight:						
Tons carried - Revenue freight (1)	14,844,025	14,343,400	6,053,943	5,714,694	4,790,167	4,804,935
Ton-miles - Revenue freight (000)	6,012,157	6,493,686	3,070,854	3,282,366	2,429,590	2,660,976
Ton-miles - Revenue and non-revenue freight (000)	6,112,097	6,615,539	3,135,526	3,356,940	2,462,671	2,702,688
Passengers:						
Revenue passengers (1)	1,899,203	1,765,837	1,256,621	1,082,860	576,445	607,801
Revenue passenger-miles (000)	156,499	160,492	91,105	83,267	58,200	69,616
Gross ton-miles:						
Freight train (000)	12,779,439	13,933,239	6,555,063	7,114,299	5,116,110	5,618,327
Passenger train (000)	1,387,727	1,347,241	878,266	796,374	414,050	458,420
Totals (000)	14,167,166	15,280,480	7,433,329	7,910,673	5,530,160	6,076,747
Train-miles:						
Freight service	5,196,863	5,331,838	2,744,378	2,731,520	2,013,335	2,148,912
Passenger service	2,183,314	2,113,502	1,355,886	1,207,949	683,762	728,705
Work service	191,375	131,042	138,438	103,969	33,690	11,685
Totals	7,571,552	7,576,382	4,238,702	4,043,438	2,730,787	2,889,302
Car-miles:						
Freight:						
Loaded	168,335,428	183,599,499	87,883,864	94,609,186	67,731,046	74,032,701
Empty	94,250,683	108,580,073	47,815,803	56,662,776	36,681,703	42,218,721
Cabooses	5,494,358	5,625,143	2,883,972	2,854,238	2,185,345	2,328,171
Totals	268,080,469	297,804,715	138,583,639	154,126,200	106,598,094	118,579,593
Passenger	21,202,325	21,225,218	13,408,122	12,554,834	6,435,438	7,181,847
Total transportation service	289,282,794	319,029,933	151,991,761	166,681,034	113,033,532	125,761,440
Number of employees - Railway	130,490	128,814	71,934	70,054	49,847	50,327
Payroll - Railway \$	56,023,762	51,730,963	31,316,251	28,328,508	20,578,224	19,535,101
Payroll chargeable to railway operating expenses \$	54,206,663	48,475,774	31,282,227	26,699,977	19,080,500	18,083,629

(1) Includes traffic handled by more than one road.

^r Revised figures.

TABLE 6. Miscellaneous Railway Averages
February 1965

	Total		Canadian National Railways		Canadian Pacific Railway Company	
	24 railways	22 railways	Railways		Company	
	1965	1964 ^r	1965	1964	1965	1964 ^r
Per day per mile of road operated:						
Operating revenues \$	78.93	78.63	75.16	72.99	85.14	84.95
Operating expenses \$	83.15	75.83	85.46	73.95	81.58	79.43
Ton-miles - Revenue freight	4,849	5,054	4,767	4,905	5,203	5,498
Ton-miles - All freight	4,929	5,149	4,867	5,017	5,274	5,584
Passenger-miles - Revenue	126	125	141	124	125	144
Per freight train mile:						
Freight revenue \$	16.75	17.01	15.68	16.05	17.47	17.04
Tons carried - Revenue freight	1,157	1,218	1,119	1,202	1,207	1,238
Tons carried - All freight	1,176	1,241	1,143	1,229	1,223	1,258
Freight cars - Loaded	32.4	34.4	32.0	34.6	33.6	34.5
Freight cars - Empty	18.1	20.4	17.4	20.7	18.2	19.6
Per passenger train mile:						
Passengers carried	72	76	67	69	85	96
Passenger cars	9.7	10.0	9.9	10.4	9.4	9.9
Other:						
Operating expense per train-mile \$	13.62	12.86	12.99	12.24	13.95	13.31
Miles hauled - Revenue freight	405	453	507	574	507	554
Miles carried - Revenue passengers	82	91	72	77	101	115
Tons carried per loaded freight-car-mile	36.3	36.0	35.7	35.5	36.4	36.5
Revenue per ton-mile of freight ¢	1.448	1.397	1.401	1.335	1.447	1.376
Revenue per passenger per mile ¢	2.491	2.442	2.443	2.385	2.549	2.521
Ratio of operating payroll to operating revenues ... %	55.39	47.99	64.61	54.67	47.99	43.98
Ratio of operating expenses to operating revenues .. %	105.34	96.44	113.71	101.31	95.81	93.50

^r Revised figures.