

52-204

C-3

CANADA
DEPARTMENT OF TRADE AND COMMERCE
DOMINION BUREAU OF STATISTICS
TRANSPORTATION BRANCH

EXPRESS STATISTICS

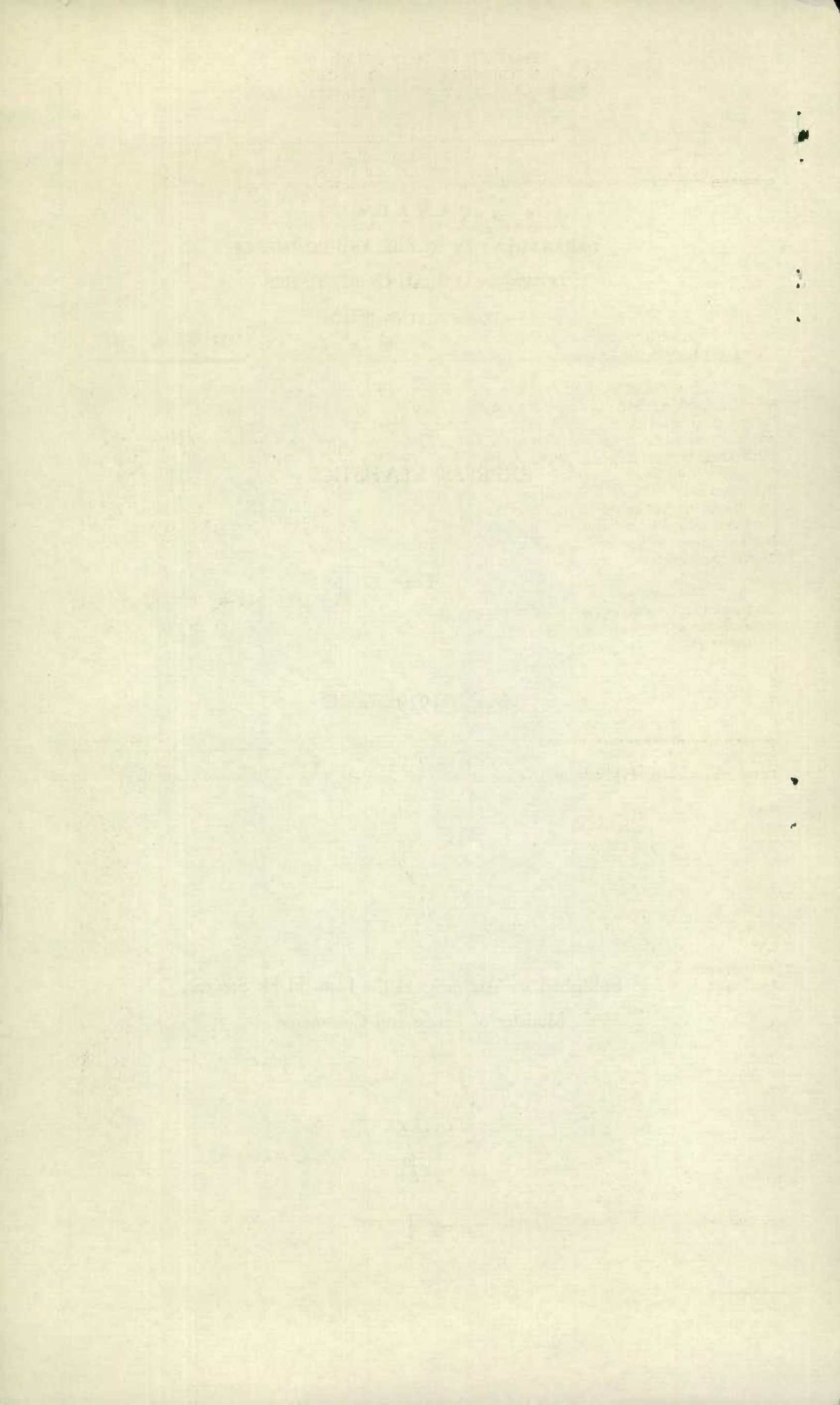
For

1929

Published by Authority of the Hon. H. H. Stevens,
Minister of Trade and Commerce

OTTAWA

1930



DEPARTMENT OF TRADE AND COMMERCE
DOMINION BUREAU OF STATISTICS
TRANSPORTATION AND PUBLIC UTILITIES BRANCH
OTTAWA

Dominion Statistician, R.H. Coats, B.A., F.S.S., (Hon.), F.R.S.C.
Chief, Transportation and Public Utilities Branch, G.S. Wrong, B.Sc.

EXPRESS STATISTICS

FOR

1929

The following tables show the financial and operating statistics for 1929 of the express companies operating in Canada.

The Canadian Pacific Express Company is a subsidiary company of the Canadian Pacific Railway and handles the express business of the parent company. The express business of the Canadian National system is handled by a department of the railway, but the accounts are kept separate and the data are included in this report. The British American Express Company operates over the Algoma Central and Hudson Bay and the Algoma Eastern railways. The business over the Central Canada, the Edmonton, Dunvegan and British Columbia and the Alberta Great Waterways railways was handled by the Canadian National railway up to October 31, and, for November and December, by the Northern Alberta Railways. The American Railway Express Company, succeeded by the Railway Express Agency, operates mainly over the Canadian sections of the United States railways.

The express privileges shown in the following tables are the amounts paid to carriers for transporting the express matter. The capital of the Canadian National Express Department is the capital stock of the express companies and expenditures by the railway.

SUMMARY OF ALL COMPANIES

Year Ended :	Gross	:	Operating	:	Express	:	Net Operating
June 30th :	Earnings	:	Expenses	:	Privileges	:	Revenue
	\$		\$		\$		\$
1911	9,913,018		4,151,228		4,553,861		1,207,969
1912	10,994,418		4,880,120		4,892,242		1,222,056
1913	12,827,479		5,743,545		6,324,320		759,614
1914	12,646,452		6,246,632		6,016,364		383,456
1915	11,311,797		5,632,904		5,610,224		68,669
1916	12,860,629		5,794,517		6,146,399		919,713
1917	16,836,374		7,687,656		8,052,606		1,096,112
1918	18,680,092		9,354,667		8,875,181		450,244
1919	21,157,930		11,792,500		11,347,767	Dr.	1,982,337
Year Ended Dec. 31st							
1919	24,933,219		13,227,652		12,936,615	Dr.	1,231,048
1920	30,512,504		16,120,880		16,009,460	Dr.	1,617,836
1921	32,504,894		15,601,187		16,549,915		353,792
1922	28,697,332		13,596,518		14,581,789		519,025
1923	27,625,700		13,217,780		14,342,410		65,511
1924	26,196,017		12,723,651		13,557,168	Dr.	84,802
1925	25,876,342		12,336,485		13,312,960		226,897
1926	26,554,378		12,442,257		13,466,863		645,258
1927	26,532,182		12,548,374		13,275,355		708,453
1928	27,674,270		13,032,376		13,459,187		1,182,707
1929	27,758,385		13,480,028		13,598,575		679,782

1917
1918
1919

1920
1921
1922

1923
1924
1925

1926
1927
1928
1929
1930
1931
1932
1933
1934
1935
1936
1937
1938
1939
1940
1941
1942
1943
1944
1945
1946
1947
1948
1949
1950
1951
1952
1953
1954
1955
1956
1957
1958
1959
1960
1961
1962
1963
1964
1965
1966
1967
1968
1969
1970
1971
1972
1973
1974
1975
1976
1977
1978
1979
1980
1981
1982
1983
1984
1985
1986
1987
1988
1989
1990
1991
1992
1993
1994
1995
1996
1997
1998
1999
2000
2001
2002
2003
2004
2005
2006
2007
2008
2009
2010
2011
2012
2013
2014
2015
2016
2017
2018
2019
2020
2021
2022
2023
2024
2025
2026
2027
2028
2029
2030
2031
2032
2033
2034
2035
2036
2037
2038
2039
2040
2041
2042
2043
2044
2045
2046
2047
2048
2049
2050
2051
2052
2053
2054
2055
2056
2057
2058
2059
2060
2061
2062
2063
2064
2065
2066
2067
2068
2069
2070
2071
2072
2073
2074
2075
2076
2077
2078
2079
2080
2081
2082
2083
2084
2085
2086
2087
2088
2089
2090
2091
2092
2093
2094
2095
2096
2097
2098
2099
2100

2101
2102
2103
2104
2105
2106
2107
2108
2109
2110
2111
2112
2113
2114
2115
2116
2117
2118
2119
2120
2121
2122
2123
2124
2125
2126
2127
2128
2129
2130
2131
2132
2133
2134
2135
2136
2137
2138
2139
2140
2141
2142
2143
2144
2145
2146
2147
2148
2149
2150
2151
2152
2153
2154
2155
2156
2157
2158
2159
2160
2161
2162
2163
2164
2165
2166
2167
2168
2169
2170
2171
2172
2173
2174
2175
2176
2177
2178
2179
2180
2181
2182
2183
2184
2185
2186
2187
2188
2189
2190
2191
2192
2193
2194
2195
2196
2197
2198
2199
2200

2201
2202
2203
2204
2205
2206
2207
2208
2209
2210
2211
2212
2213
2214
2215
2216
2217
2218
2219
2220
2221
2222
2223
2224
2225
2226
2227
2228
2229
2230
2231
2232
2233
2234
2235
2236
2237
2238
2239
2240
2241
2242
2243
2244
2245
2246
2247
2248
2249
2250
2251
2252
2253
2254
2255
2256
2257
2258
2259
2260
2261
2262
2263
2264
2265
2266
2267
2268
2269
2270
2271
2272
2273
2274
2275
2276
2277
2278
2279
2280
2281
2282
2283
2284
2285
2286
2287
2288
2289
2290
2291
2292
2293
2294
2295
2296
2297
2298
2299
2300

2301
2302
2303
2304
2305
2306
2307
2308
2309
2310
2311
2312
2313
2314
2315
2316
2317
2318
2319
2320
2321
2322
2323
2324
2325
2326
2327
2328
2329
2330
2331
2332
2333
2334
2335
2336
2337
2338
2339
2340
2341
2342
2343
2344
2345
2346
2347
2348
2349
2350
2351
2352
2353
2354
2355
2356
2357
2358
2359
2360
2361
2362
2363
2364
2365
2366
2367
2368
2369
2370
2371
2372
2373
2374
2375
2376
2377
2378
2379
2380
2381
2382
2383
2384
2385
2386
2387
2388
2389
2390
2391
2392
2393
2394
2395
2396
2397
2398
2399
2400

Table 1.

CAPITAL

	: American : Railway \$: British : American \$: Canadian : National \$
Stocks	100,000.00	2,768,800.00
Bonds	620,773.48
Total	100,000.00	3,389,573.48

Table 2.

INVESTMENTS IN LAND, BUILDINGS AND EQUIPMENT

Lands and buildings	393.06	332,276.05
Equipment	92,455.56	396.12	1,236,178.32
Total	92,848.62	396.12	1,568,454.37

Table 3.

INCOME ACCOUNT

Gross receipts from operation	192,835.63	36,653.50	14,628,708.63
Express privileges "Dr."	120,980.62	18,326.78	6,609,003.19
Operating revenues	71,855.01	18,326.72	8,019,705.44
Operating expenses	69,226.45	10,878.97	7,147,181.59
Net operating revenue	2,628.56	7,447.75	872,523.85
Net revenue from outside operations
Total net revenue	2,628.56	7,447.75	872,523.85
Taxes	1,625.69	640.74	90,071.81
Operating income	1,002.87	6,807.01	782,452.04
Other income	173.09	13,904.04
Gross corporate income	1,002.87	6,980.10	796,356.08
Deductions	3,092.83
Net corporate income	1,002.87	6,980.10	793,263.25

Table 4.

OPERATING REVENUES

Revenue from Transportation

Express revenue	172,858.90	36,653.50	14,282,276.64
Miscellaneous transportation revenue
Total from transportation	172,858.90	36,653.50	14,282,276.64

Revenue from Outside Operations other than Transportation

Custom Brokerage Fees	6,734.03
Money Orders - Domestic	141,016.43
" " - Foreign	5,719.06
Travellers' Cheques - Domestic	1,871.03
" " - Foreign
C.O.D. Cheques	177,615.40
Telegraphic Transfers
Letters of Credit
Other Revenue - Finance Department	8,049.68
Miscellaneous Revenue	19,976.73	5,426.36
Total	19,976.73	346,431.99
Gross receipts from operation	192,835.63	36,653.50	14,628,708.63

Table 5.

OPERATING EXPENSES

Maintenance	6,176.05	269,681.42
Traffic	160.66	1,166.89	81,499.78
Transportation	57,724.80	6,418.84	6,461,651.62
General	5,164.94	3,293.24	334,348.77
Total	69,226.45	10,878.97	7,147,181.59

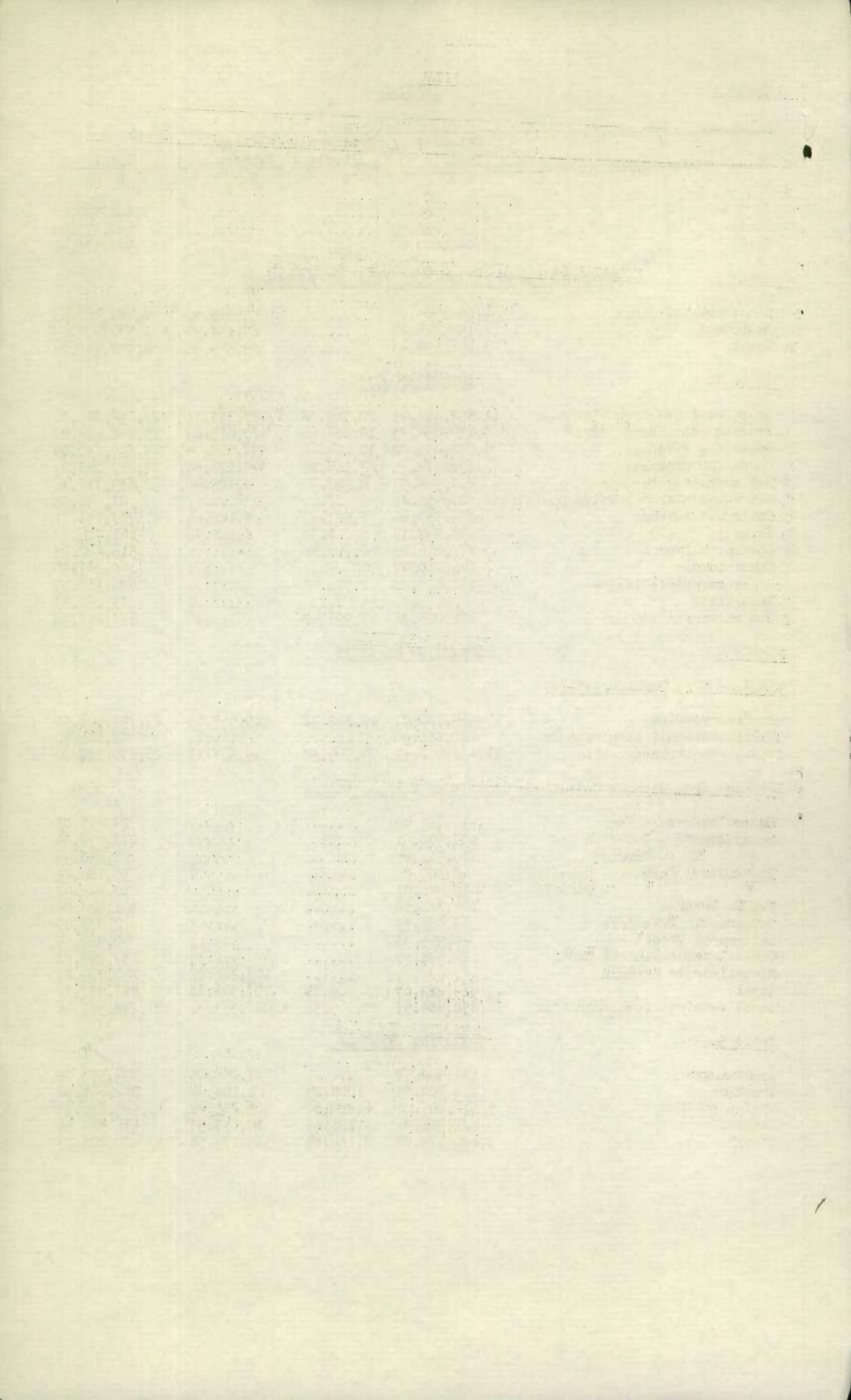


Table 6.

TAXES

	: American : Railway	: British : American	: Canadian : National
Prince Edward Island	\$	\$	\$ 10.00
Nova Scotia	14,804.25
New Brunswick	2,897.58
Quebec	254.52	6,190.79
Ontario	1,172.45	129.50	51,251.30
Manitoba	198.72
Saskatchewan	6,926.89
Alberta	6,610.42
British Columbia	391.76
Foreign	92.24
Dominion of Canada	511.24	896.58
Total	1,625.69	640.74	90,071.81

Table 7.

FINANCIAL PAPER

Money Orders - Domestic	\$	\$	\$32,122,742.58#
" " - Foreign	545,408.40
Trevellers' Cheques - Domestic	(
" " - Foreign	380,906.63
C.O.D. Cheques	(x)
Telegraphic Transfers
Others
Total	33,049,057.61

Table 8.

OFFICES

Number of express offices	136	14	1,841
Number of express offices selling money orders	-	-	3,107

Table 9.

MILEAGE OPERATED

Over steam railways	1,657.39	410.13	23,047.58
Over electric railways	23.60	218.26
Over steam boat lines	2,321.00	1,339.70
Over stage lines	1.50
Miscellaneous lines	18.00
Total	4,003.49	410.13	24,623.54
Ocean mileage
Total mileage	4,003.49	410.13	24,623.54

Table 10.

MILEAGE OPERATED BY PROVINCES

Prince Edward Island	276.10
Nova Scotia	1,078.66
New Brunswick	1,274.20
Quebec	159.40	3,000.23
Ontario	919.90	410.13	6,393.78
Manitoba	218.02	2,916.88
Saskatchewan	3,930.30
Alberta	3,014.41
British Columbia	1,862.17	2,665.08
Yukon	844.00
United States	73.90
Ocean mileage
Total	4,003.49	410.13	24,623.54

Table 11.

EMPLOYEES

Total number of employees	114	No full time employees	3,115
Amount of salaries and wages	(1)\$32,150.05	\$7,001.60	\$5,130,971.00 †

- Includes amount of C.O.D. cheques. (x) - Included in **Domestic** money orders.

(1) - Includes \$973.39 for wages of part time employees.

† - Includes \$347,509 back time pay for 1927 and 1928.

STATISTICS CANADA LIBRARY
BIBLIOTHEQUE STATISTIQUE CANADA



1010678643