

# DOMINION BUREAU OF STATISTICS

OTTAWA - CANADA

Published by Authority of the Minister of Industry, Trade and Commerce

# BUREAU FÉDÉRAL DE LA STATISTIQUE

Publication autorisée par le ministre de l'Industrie et du Commerce

CATALOGUE No.

32-206

ANNUAL - ANNUUEL

e-2

Vol. 50

Price - Prix: 25 cents

## RAILWAY OPERATING STATISTICS

YEAR 1970

## STATISTIQUE DE L'EXPLOITATION FERROVIAIRE

ANNÉE 1970

The financial and operating statistics presented in this report are based on cumulative monthly returns pertaining to the period January 1 to December 31, 1970. A number of retroactive revisions not appearing in figures published each month are reflected herein.

Les statistiques financières et d'exploitation ferroviaire contenues dans le présent rapport sont basées sur les données cumulatives des déclarations mensuelles visant la période du 1<sup>er</sup> janvier au 31 décembre 1970. Certaines révisions rétroactives qui ne sont pas indiquées dans les statistiques publiées chaque mois apparaissent dans le présent bulletin.

Data presented in this report covers the two major class 1 roads plus 22 other common carrier railways (class 2) whose revenues exceed \$500,000 annually. Excluded are statistics of class 3 and 4 roads whose operating revenues represent less than 1% of all reporting lines.

Les données contenues dans le bulletin ont trait aux deux réseaux principaux de chemin de fer, (1<sup>re</sup> classe) et à vingt-deux autres sociétés (2<sup>e</sup> classe) dont les recettes dépassent \$500,000 par année. Elles ne comprennent pas les statistiques des entreprises de 3<sup>e</sup> et de 4<sup>e</sup> classe dont les recettes d'exploitation sont inférieures à 1% du total des recettes.

### Financial Statistics

Railway operating revenues reported by these 24 railways for the year 1970 totalled \$1,671,402,228, up 5.9% over the 1969 total. Operating expenses rose 4.8% to \$1,568,758,534, leaving net operating income up 24.1% at \$102,643,694. The major mining strikes which reduced traffic considerably in the summer of 1969 would be a significant factor behind these increases.

### Statistiques financières

In 1970, les recettes d'exploitation déclarées par ces 24 sociétés ferroviaires ont atteint \$1,671,402,228, soit 5.9% de plus qu'en 1969. Les frais d'exploitation ont été de \$1,568,758,534 (+4.8); il en est résulté un revenu net d'exploitation de \$102,643,694 (+24.1%). Les grandes grèves des mines qui ont considérablement réduit le trafic ferroviaire au cours de l'été 1969 seraient la cause principale des augmentations de 1970.

### Traffic and Operating Statistics

Revenue freight carried totalled 261,101,357 tons, a 12.7% increase over 1969. Corresponding ton-miles were higher by 14.2% at 108,170,719,000. Average revenue per freight ton-mile however was lower at 1.383 cents compared with 1.485 cent in 1969.

### Statistiques du trafic et de l'exploitation

Le volume des marchandises payantes transportées par chemin de fer a été de 261,101,357 tonnes, soit 12.7% de plus qu'en 1969, et le nombre de tonnes-milles correspondant a été de 108,170,719,000 (+14.2%). Les recettes moyennes par tonne-mille de marchandises payantes a toutefois diminué, passant à 1.383 cent comparativement à 1.485 cent en 1969.

Revenue passengers carried totalled 23,838,815, up 0.6% over 1969, however the corresponding passenger-mile figure was 5.0% lower at 2,270,199,000. Average revenue per passenger-mile rose to 2.805 cents from 2.729 cents.

Le nombre de voyageurs payants transportés durant l'année a augmenté de 0.6% (23,838,815) par rapport à 1969; toutefois, le nombre de voyageurs-milles (2,270,199,000) a diminué de 5.0%. Les recettes moyennes par voyageur-mille sont passées de 2.729 cent à 2.805 cents.

Freight train-miles rose 4.1% to 62,548,237. The per cent of freight car-miles run out empty rose to 40.5% from 38.8%.

Le nombre de trains-milles du service marchandises a augmenté de 4.1%, en passant à 62,548,237. Le pourcentage de wagons-milles du (service marchandises) improductifs est passé de 38.8% à 40.6%.

The number of employees on railway payrolls eased 2.0% to 116,053, while compensation showed a rise of 5.3% to \$928,594,111.

Le nombre de personnes inscrites sur les listes de paye des entreprises ferroviaires a diminué de 2% (116,053) alors que la rémunération s'est accrue de 5.3% (\$928,594,111).

Transportation and Public Utilities Division  
Transportation Section

Division des transports et des services d'utilité publique  
Section des transports

The contents of this document may be used freely but DRS should be credited when republishing all or any part of it.

Le présent document peut être reproduit en toute liberté pourvu qu'on indique qu'il émane du B.F.S.

TABLE 1. Railway Operating Revenues, Expenses and Net Income

Year 1970

No.		Total 24 railways — Total, 24 sociétés ferroviaires		Canadian National Railways — Canadien National
		1970	1969 <sup>r</sup>	1970
		dollars		
	<u>Operating revenues</u>			
1	Freight .....	1,428,577,709	1,324,433,857	696,125,430
2	Passenger .....	63,672,015	65,923,944	45,814,418
3	Sleeping and parlour car .....	10,027,510	10,710,710	7,394,730
4	Mail .....	12,659,807	14,274,136	10,254,591
5	Express .....	26,550,881	20,188,424	19,606,761
6	Switching .....	10,964,385	10,346,549	4,333,836
7	Payments relating to the National Transportation Act .....	67,386,620	81,254,989	38,994,508
8	Incidental .....	47,452,906	47,917,520	27,347,273
9	All other .....	4,110,395	3,928,241	2,306,522
10	Total .....	1,671,402,228	1,578,978,370	852,178,069
	<u>Operating expenses</u>			
11	Road maintenance .....	283,033,901	274,396,413	153,278,109
12	Equipment maintenance .....	347,380,833	327,797,372	184,946,416
13	Traffic .....	43,159,401	41,817,009	24,474,842
14	Transportation (railway line) .....	609,769,232	583,334,256	320,705,657
15	Miscellaneous railway operations .....	20,824,857	22,307,395	14,925,252
16	General .....	147,045,064	143,308,254	77,090,509
17	Equipment rents .....	13,828,471	10,458,105	975,120
18	Joint facility rents .....	4,609,763	3,683,787	Dr. 1,268,847
19	Railway tax accruals .....	99,107,012	89,164,428	32,859,382
20	Total .....	1,568,758,534	1,496,267,019	807,986,440
21	Net operating income .....	102,643,694	82,711,351	44,191,629

<sup>r</sup> Revised figures.

TABLE 2. Rail Operating Revenues, Expenses and Net Income

Year 1970

No.		Total 24 railways — Total, 24 sociétés ferroviaires		Canadian National Railways — Canadien National
		1970	1969 <sup>r</sup>	1970
		dollars		
	<u>Operating revenues</u>			
1	Railway .....	1,671,402,228	1,578,978,370	852,178,069
2	Express .....	88,691,923	82,979,271	60,585,322
3	Commercial communications .....	108,240,034	97,686,700	65,605,343
4	Highway transport (rail) .....	12,494,210	9,671,332	11,624,648
5	Total .....	1,880,828,395	1,769,315,673	989,993,382
	<u>Operating expenses</u>			
6	Railway .....	1,568,758,534	1,496,267,019	807,986,440
7	Express .....	87,162,404	81,397,103	59,330,434
8	Commercial communications .....	87,999,410	81,607,142	50,975,026
9	Highway transport (rail) .....	11,718,462	9,995,218	10,954,279
10	Total .....	1,755,638,810	1,669,266,482	929,246,179
	<u>Net operating income</u>			
11	Railway .....	102,643,694	82,711,351	44,191,629
12	Express .....	1,529,519	1,582,168	1,254,888
13	Commercial communications .....	20,240,624	16,079,558	14,630,317
14	Highway transport (rail) .....	775,748	Dr. 323,886	670,369
15	Total .....	125,189,585	100,049,191	60,747,203

<sup>r</sup> Revised figures.

TABLEAU 1. Recettes, dépenses et revenus nets de l'exploitation ferroviaire (matériel roulant)

Année 1970

Canadian National Railways — Canadien National	Canadian Pacific — Canadien Pacifique			
1969	1970	1969		N <sup>o</sup>
dollars				
663,682,246	544,805,735	504,361,837	<u>Recettes d'exploitation</u>	
46,978,398	12,350,186	13,733,573	Marchandises .....	1
7,697,828	2,594,666	2,936,292	Voyageurs .....	2
11,338,009	2,054,293	2,395,239	Voitures-lits et voitures-salons .....	3
16,765,315	5,545,674	2,030,706	Transports postaux .....	4
3,810,413	3,262,847	3,268,859	Messageries .....	5
47,020,227	27,418,333	33,063,262	Manoeuvres .....	6
27,724,761	17,286,404	17,563,595	Versements en vertu de la loi nationale sur les transports	7
2,194,920	1,527,370	1,638,770	Occasionnelles .....	8
			Toutes autres .....	9
827,212,117	616,845,508	580,992,133	Total .....	10
			<u>Dépenses d'exploitation</u>	
153,813,890	88,413,108	83,990,741	Entretien de la voie .....	11
179,323,268	129,501,372	119,973,542	Entretien du matériel .....	12
23,146,656	16,653,349	16,644,639	Trafic .....	13
311,047,348	232,364,416	221,882,545	Transport (chemins de fer) .....	14
16,561,697	5,470,612	5,364,079	Services divers .....	15
74,480,506	55,684,265	53,113,945	Frais généraux .....	16
609,175	2,505,854	87,768	Frais de location de matériel .....	17
52,807	4,230,580	2,428,934	Frais de location d'installations exploitées en commun ...	18
32,478,044	43,438,330	42,619,059	Impôts .....	19
791,513,391	578,261,886	546,105,252	Total .....	20
35,698,726	38,583,622	34,886,881	Revenus nets d'exploitation .....	21

† Nombres rectifiés.

TABLEAU 2. Recettes, dépenses et revenus nets de l'exploitation ferroviaire (ensemble des sociétés)

Année 1970

Canadian National Railways — Canadien National	Canadian Pacific — Canadien Pacifique			
1969	1970	1969		N <sup>o</sup>
dollars				
827,212,117	616,845,508	580,992,133	<u>Recettes d'exploitation</u>	
55,730,479	27,899,027	26,989,450	Chemins de fer .....	1
59,161,894	35,210,674	31,713,189	Messageries .....	2
8,896,047	—	—	Communications commerciales .....	3
			Transport routier (entre terminus) .....	4
951,000,537	679,955,209	639,694,772	Total .....	5
			<u>Dépenses d'exploitation</u>	
791,513,391	578,261,886	546,105,252	Chemins de fer .....	6
54,338,311	27,521,427	26,799,450	Messageries .....	7
47,775,787	31,898,625	29,188,280	Communications commerciales .....	8
9,359,749	—	—	Transport routier (entre terminus) .....	9
902,987,238	637,681,938	602,092,982	Total .....	10
			<u>Revenus nets d'exploitation</u>	
35,698,726	38,583,622	34,886,881	Chemins de fer .....	11
1,392,168	377,600	190,000	Messageries .....	12
11,386,107	3,312,049	2,524,909	Communications commerciales .....	13
Dr. 463,702	—	—	Transport routier (entre terminus) .....	14
48,013,299	42,273,271	37,601,790	Total .....	15

† Nombres rectifiés.

TABLE 3. Cumulative Rail Operating Revenues, Expenses and Net Income

1965-1970

No.		Total class 1 and 2 railways(1)		
		1965	1966	1967
		dollars		
	<u>Operating revenues</u>			
1	Railway .....	1,368,790,292	1,476,285,085	1,514,068,668
2	Express .....	63,698,398	69,672,630	70,262,594
3	Commercial communications .....	70,330,785	76,834,696	82,750,345
4	Highway transport (rail) .....	3,784,085	3,709,740	5,163,220
5	Total .....	1,506,603,560	1,626,502,151	1,672,244,827
	<u>Operating expenses</u>			
6	Railway .....	1,288,066,218	1,367,176,643	1,438,207,122
7	Express .....	63,062,852	69,092,000	69,399,453
8	Commercial communications .....	62,188,927	67,670,306	71,770,191
9	Highway transport (rail) .....	2,966,011	3,182,146	4,794,339
10	Total .....	1,416,284,008	1,507,121,095	1,584,171,105
	<u>Net operating income</u>			
11	Railway .....	80,724,074	109,108,442	75,861,546
12	Express .....	635,546	580,630	863,141
13	Commercial communications .....	8,141,858	9,164,390	10,980,154
14	Highway transport (rail) .....	818,074	527,594	368,881
15	Total .....	90,319,552	119,381,056	88,073,722

(1) Represents 23 railways in 1965, 1966, 1967 and 24 in 1968, 1969, 1970.  
r Revised figures.

OPERATING REVENUES AND OPERATING EXPENSES, CLASS 1 AND 2 RAILWAYS, 1957-1970  
RECETTES ET DÉPENSES D'EXPLOITATION DES CHEMINS DE FER, 1ère ET 2<sup>e</sup> CLASSES, 1957-1970

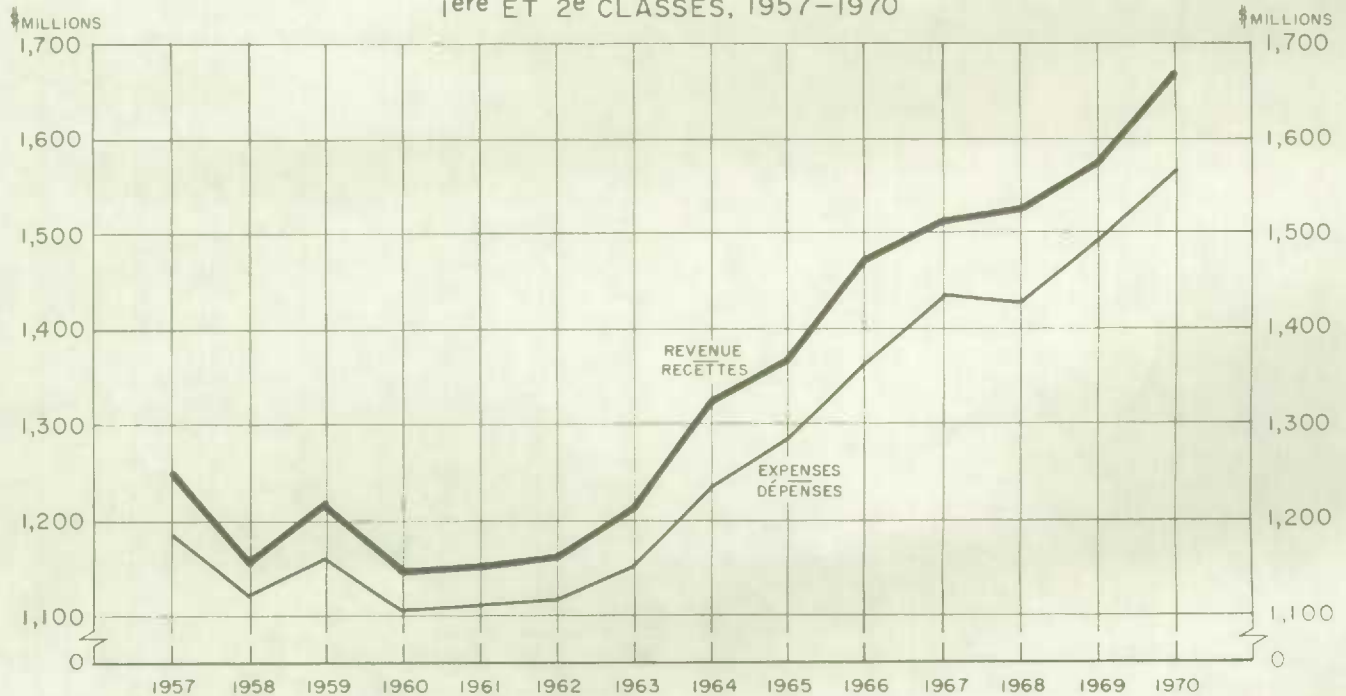




TABLEAU 3. Chiffres cumulés des recettes, dépenses et revenus nets de l'exploitation ferroviaire (ensemble des sociétés)

1965-1970

Ensemble des sociétés ferroviaires des classes 1 et 2(1)				
1968 <sup>r</sup>	1969 <sup>r</sup>	1970		
dollars				
1,527,646,715	1,578,978,370	1,671,402,228	<u>Recettes d'exploitation</u>	
77,095,203	82,979,271	88,691,923	Chemins de fer .....	1
89,626,975	97,686,700	108,240,034	Messageries .....	2
8,125,125	9,671,332	12,494,210	Communications commerciales .....	3
			Transport routier (entre terminus) .....	4
1,702,494,018	1,769,315,673	1,880,828,395	Total .....	5
1,433,022,128	1,496,267,019	1,568,758,534	<u>Dépenses d'exploitation</u>	
75,886,122	81,397,103	87,162,404	Chemins de fer .....	6
77,361,885	81,607,142	87,999,410	Messageries .....	7
7,765,457	9,995,218	11,718,462	Communications commerciales .....	8
			Transport routier (entre terminus) .....	9
1,594,035,592	1,669,266,482	1,755,638,810	Total .....	10
94,624,587	82,711,351	102,643,694	<u>Revenus nets d'exploitation</u>	
1,209,081	1,582,168	1,529,519	Chemins de fer .....	11
12,265,090	16,079,558	20,240,624	Messageries .....	12
359,668	323,886	775,748	Communications commerciales .....	13
	Dr.		Transport routier (entre terminus) .....	14
108,458,426	100,049,191	125,189,585	Total .....	15

(1) Représente 23 sociétés ferroviaires en 1965, 1966, 1967 et 24 en 1968, 1969, 1970.

<sup>r</sup> Nombres rectifiés.

NET OPERATING INCOME, CLASS 1 AND 2 RAILWAYS, 1957-1970  
REVENU NET D'EXPLOITATION DES CHEMINS DE FER,  
1ère ET 2e CLASSES, 1957-1970

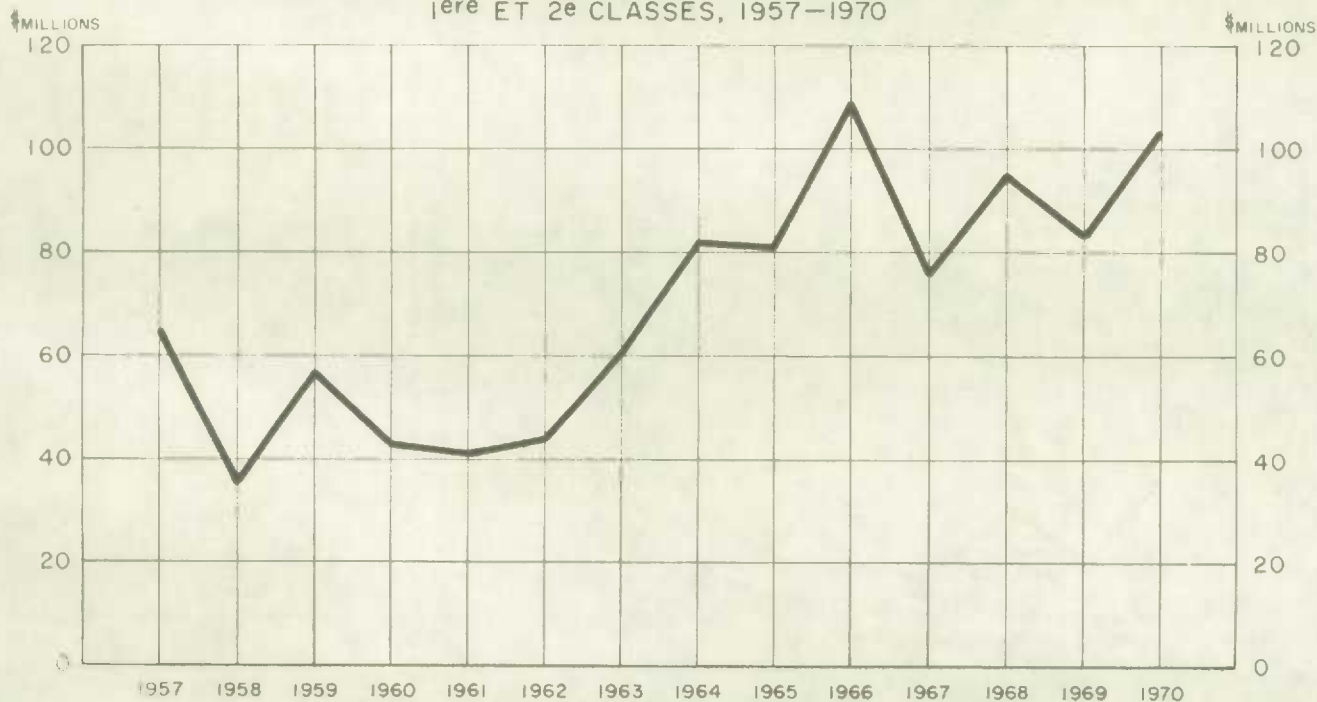


TABLE 4. Railway Traffic and Employment Statistics  
Year 1970

No.		Total 24 railways — Total, 24 sociétés ferroviaires		Canadian National Railways — Canadien National
		1970	1969 <sup>r</sup>	1970
		1	Miles of road operated (monthly average) .....	44,326.8
	<b>Freight</b>			
2	Tons carried - Revenue freight(1) .....	261,101,357	231,719,434	93,946,002
3	Ton-miles - Revenue freight ..... '000	108,170,719	94,687,799	51,952,251
4	Ton-miles - Revenue and non-revenue freight ..... "	110,935,320	97,170,505	53,727,989
	<b>Passengers</b>			
5	Revenue passengers(1) .....	23,838,815	23,699,848	12,871,646
6	Revenue passenger-miles ..... '000	2,270,199	2,415,633	1,687,887
	<b>Gross ton-miles</b>			
7	Freight train ..... "	216,575,181	194,695,834	107,145,066
8	Passenger train ..... "	13,165,769	14,915,067	9,931,427
9	Total ..... "	229,740,950	209,610,901	117,076,493
	<b>Train-miles</b>			
10	Freight service .....	62,548,237	60,105,832	31,556,764
11	Passenger service .....	24,743,057	27,170,887	17,546,334
12	Work service .....	2,367,460	2,639,958	1,796,227
13	Total .....	89,658,754	89,916,677	50,899,325
	<b>Car-miles</b>			
	<b>Freight:</b>			
14	Loaded .....	2,459,703,534	2,321,219,235	1,269,370,386
15	Empty .....	1,679,755,598	1,472,571,012	839,711,827
16	Cabooses .....	68,747,690	67,066,785	36,613,747
17	Total .....	4,208,206,822	3,860,857,032	2,145,695,960
18	Passenger .....	191,454,433	217,016,423	139,720,200
19	Total transportation service .....	4,399,661,255	4,077,873,455	2,285,416,160
20	Number of employees - Railway .....	116,053	118,380	66,601
21	Payroll - Railway ..... \$	928,594,111	881,761,759	536,322,119
22	Payroll chargeable to railway operating expenses ..... \$	839,593,933	797,442,999	478,887,111

(1) Includes duplication where traffic handled by more than one road. r Revised figures.

TABLE 5. Miscellaneous Railway Averages  
Year 1970

No.		Total 24 railways — Total, 24 sociétés ferroviaires		Canadian National Railways — Canadien National
		1970	1969 <sup>r</sup>	1970
		1	Per day per mile of road operated	
2	Operating revenues ..... \$	103.30	98.00	101.13
3	Operating expenses ..... \$	96.96	92.86	95.89
4	Ton-miles - Revenue freight .....	6,686	5,877	6,166
5	Ton-miles - All freight .....	6,857	6,031	6,376
6	Passenger-miles - Revenue .....	140	150	200
	<b>Per freight-train mile</b>			
7	Freight revenue(1) ..... \$	23.92	23.39	23.30
8	Tons carried - Revenue freight .....	1,729	1,575	1,646
9	Tons carried - All freight .....	1,774	1,617	1,703
10	Freight cars - Loaded .....	39.3	38.6	40.2
11	Freight cars - Empty .....	26.9	24.5	26.6
	<b>Per passenger-train mile</b>			
12	Passengers carried .....	92	89	96
13	Passenger cars .....	7.7	8.0	8.0
	<b>Other</b>			
14	Operating expense per train-mile ..... \$	17.50	16.64	15.87
15	Miles hauled - Revenue freight .....	414	409	553
16	Miles carried - Revenue passengers .....	95	102	131
17	Tons carried per loaded freight-car mile .....	45.1	41.9	42.5
18	Revenue per ton-mile of freight(1) ..... ¢	1.383	1.485	1.415
19	Revenue per passenger per mile .....	2.805	2.729	2.714
20	Ratio of operating payroll to operating revenues ..... %	50.23	50.50	56.20
21	Ratio of operating expenses to operating revenues ..... %	93.86	94.76	94.81
22	Ratio of transportation expenses to operating revenues ... %	36.48	36.94	37.63

(1) Payments relating to the National Transportation act have been added to freight revenues for compiling these averages. r Revised figures.

TABLEAU 4. Statistiques de l'exploitation ferroviaire sur le trafic et l'emploi

Année 1970

Canadian National Railways — Canadien National	Canadian Pacific — Canadien Pacifique			No
	1969 <sup>r</sup>	1970		
22,903,5	16,601.0	16,597.7	Milles de lignes exploitées (moyenne mensuelle) .....	1
92,061,440	77,400,405	67,240,263	<u>Marchandises</u>	
47,459,616	41,993,800	36,176,496	Tonnes transportées - trafic commercial(1) .....	2
49,117,063	42,801,919	36,905,797	Tonnes-milles - trafic commercial .....	3
			Tonnes-milles - trafic commercial et non commercial .....	4
			<u>Voyageurs</u>	
13,094,014	5,306,366	5,076,242	Voyageurs taxés(1) .....	5
1,773,743	427,549	484,864	Voyageurs-milles taxés .....	6
			<u>Tonnes-milles brutes</u>	
99,753,476	83,699,974	74,482,572	Train de marchandises .....	7
11,512,653	2,619,160	2,778,588	Train de voyageurs .....	8
111,266,129	86,319,134	77,261,160	Total .....	9
			<u>Trains-milles</u>	
31,130,085	24,392,790	23,112,391	Service marchandises .....	10
19,272,066	5,015,159	5,679,807	Service voyageurs .....	11
2,112,035	249,943	271,406	Trafic de service .....	12
52,514,186	29,657,892	29,063,604	Total .....	13
			<u>Wagons-milles</u>	
			<u>Marchandises:</u>	
1,222,531,446	958,154,155	906,272,647	Wagons chargés .....	14
765,673,036	636,091,338	545,075,883	Wagons vides .....	15
36,615,320	25,740,920	24,556,746	Fourgons de queue .....	16
2,024,819,802	1,619,986,413	1,475,905,276	Total .....	17
162,384,665	40,090,092	42,390,840	Voyageurs .....	18
2,187,204,467	1,660,076,505	1,518,296,116	Total, service de transport .....	19
68,290	39,719	40,887	Nombre d'employés - matériel roulant .....	20
511,059,657	310,497,154	298,728,790	Rémunération - matériel roulant .....	\$ 21
456,627,279	284,027,000	272,935,847	Rémunération imputable sur les dépenses de l'explo- tation ferroviaire (matériel roulant).	\$ 22

<sup>r</sup> Il y a eu double compte là où plusieurs compagnies assuraient le transport sur la même ligne. r Nombres rectifiés.

TABLEAU 5. Diverses moyennes relatives à l'exploitation ferroviaire

Année 1970

Canadian National Railways — Canadien National	Canadian Pacific — Canadien Pacifique			No
	1969 <sup>r</sup>	1970		
98.95	101.80	95.90	<u>Par jour par mille de voies exploitées</u>	
94.68	95.43	90.14	Recettes d'exploitation .....	\$ 1
5,677	6,930	5,972	Dépenses d'exploitation .....	\$ 2
5,875	7,064	6,092	Tonnes-milles - trafic commercial .....	3
212	71	80	Tonnes-milles - tous trafics .....	4
			Voyageurs-milles taxés .....	5
			<u>Par train-mille (marchandises)</u>	
22.83	23.46	23.25	Recettes(1) .....	\$ 6
1,525	1,722	1,565	Tonnes transportées - trafic commercial .....	7
1,578	1,755	1,597	Tonnes transportées - tous trafics .....	8
39.3	39.3	39.2	Wagons marchandises - chargés .....	9
24.6	26.1	23.6	Wagons marchandises - vides .....	10
			<u>Par train-mille (voyageurs)</u>	
92	85	85	Voyageurs transportés .....	11
8.4	8.0	7.5	Wagons voyageurs .....	12
			<u>Autres</u>	
15.07	19.50	18.79	Dépenses d'exploitation par train-mille .....	\$ 13
516	543	538	Parcours - trafic marchandises .....	14
135	81	96	Parcours - trafic voyageurs .....	15
40.2	44.7	40.7	Tonnes de marchandises transportées par wagon chargé-mille .....	16
1.497	1.363	1.486	Recettes par tonne-mille de marchandises(1) .....	¢ 17
1.649	2.889	2.832	Recettes par passager par mille .....	¢ 18
55.20	46.05	46.98	Rapport de la rémunération d'exploitation sur les recettes d'exploitation.	% 19
55.68	93.75	94.00	Rapport des dépenses d'exploitation sur les recettes d'exploitation.	% 20
37.60	37.67	38.19	Rapport des dépenses de transport sur les recettes d'exploitation.	% 21

(1) Les paiements effectués en vertu de la loi nationale sur les transports ont été ajoutés aux recettes provenant des marchandises pour le calcul de ces moyennes. r Nombres rectifiés.

BIBLIOTHÈQUE STATISTIQUE CANADA



1010553015