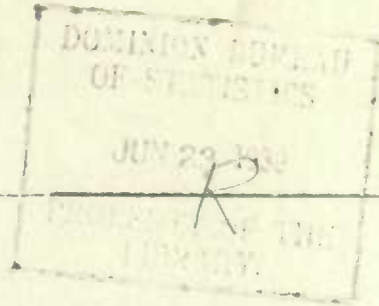


52-D-20

C.2

385 (70)

Historical File Copy



CANADA

DOMINION BUREAU OF STATISTICS

STATISTICS STATISTIQUE
CANADA CANADA

TRANSPORTATION BRANCH

MAY 20 2008

LIBRARY
BIBLIOTHÈQUE

LOCATION AND MILEAGE

of

RAILWAYS OF CANADA

JANUARY 1st, 1924



Published by Authority of the Hon. Thos. A. Low, M. P.,
Minister of Trade and Commerce

OTTAWA

1925

Historical Life Copy

1897
1898
1899
1900

NOT FOR SALE
THE STATE ARCHIVES

PREFACE

The railway mileage operated on January 1, 1924 by the steam railways of Canada is shown in the attached tables.

Tracks operated by two or more roads are shown under the name of the owning road, except that where such track bridges gaps in the railway having only trackage rights, the location of the track is shown but no mileage. The tables also include the track of the Canadian Pacific Railway across the state of Maine, of the Canadian National Railways through the state of Minnesota south of Lake of the Woods and several short stretches of track of Canadian railways running into the United States. They do not, however, include the United States lines of the Canadian National Railways, viz: Grand Trunk Western, Grand Trunk New England Lines, and the Duluth, Winnipeg and Pacific.

The mileages of the Canadian National and Canadian Pacific railways have been divided to show the mileages in each province. The location of the other railways, none of which operate in more than one province is also shown. It is thus possible to compute the mileage for any province. In designating main lines of the Canadian National and Canadian Pacific railways the object was to show the principal continuous lines across Canada rather than to make a separation between main and branch lines. These systems are so large that in many sections more than one line might properly be called a main line.

In compiling the detailed tables some corrections were made of data previously reported, the largest being a duplication of Kettle Valley railway mileage reported by both the Kettle Valley and the Canadian Pacific Railway.

It is the intention to compile these tables annually hereafter and thus maintain a specific record of Canadian railway mileage showing the increases year by year in each province and for each railway.

R.H. Coats,

DOMINION STATISTICIAN

Ottawa, Canada,
May 9, 1925.

INDEX

	<u>Page</u>
Alberta & Great Waterways Ry.	1
Algoma Central & Hudson Bay Ry.	1
Algoma Eastern Ry.	1
Atlantic, Quebec & Western Ry.	1
Brandon, Saskatchewan & Hudson Bay Ry.	1
British Yukon Ry.	1
Canada & Gulf Terminal Ry.	1
Canadian National Ry.	1 - 11
Canadian Pacific Ry.	12 - 17
Canada Southern Ry. (Operated by Michigan Central)	18
Central Canada Ry.	18
Central Vermont Ry.	18
Crow's Nest Southern Ry.	18
Cumberland Railway & Coal Co.	18
Detroit River Tunnel Co.	18
Dominion Atlantic Ry.	18
Eastern British Columbia Ry.	18
Edmonton, Dunvegan & British Columbia Ry.	18
Essex Terminal Ry.	18
Esquimalt & Nanaimo Ry.	18
Fredericton & Grand Lake Coal & Railway Co.	18
Greater Winnipeg Water District Ry.	18
Hereford Ry. (Operated by Maine Central Ry.)	18
Inverness Railway & Coal Co.	19
International Bridge & Terminal Co.	19
Kent Northern Ry.	19
Kettle Valley Ry.	19
Lake Erie & Detroit River Ry. Co. (Operated by Pere Marquette Ry.)	19
Lacombe & North Western Ry.	19
Maine Central Ry.	19
Maritime Coal Railway & Power Co.	19
Massawippi Valley Ry. (Operated by Boston & Maine Ry.)	19
Montreal & Atlantic Ry.	19
Manitoba Great Northern Ry.	19
Midland Railway of Manitoba	20
Morrissey, Fernie & Michel Ry.	20
Napierville Jct.	20
Nelson & Fort Sheppard Ry.	20
New Brunswick Coal & Railway Co.	20
New Westminster Southern Ry.	20
Ottawa & New York Ry.	20
Pacific Great Eastern Ry.	20
Pere Marquette	20
Quebec Central Ry.	20
Quebec, Montreal & Southern Ry.	20
Quebec Oriental Ry.	20
Quebec Railway, Light & Power Co.	20
Roberval & Saguenay Ry.	20
Rutland & Noyan Ry.	20
St. Lawrence & Adirondack Ry.	21
Sydney & Louisburg Ry.	21
Temiscouata Ry.	21
Temiskaming & Northern Ontario Ry.	21
Thousand Islands Ry.	21
Toronto, Hamilton & Buffalo Ry.	21
Van Buren Bridge Co.	21
Vancouver, Victoria & Eastern Ry.	21
Wabash Ry.	21
Mileage opened for operation during 1925	22

DOMINION BUREAU OF STATISTICS

TRANSPORTATION BRANCH

OTTAWA

Dominion Statistician, R.H. Coats, B.A., F.S.S., F.R.S.C.
 Chief, Transportation Branch, C.S. Wrong, B.Sc.

LOCATION OF STEAM RAILWAYS OPERATING IN CANADA

JANUARY 1ST, 1924

<u>NAME OF ROAD</u>	<u>LOCATION</u>	<u>MILES OF LINE</u>	
			<u>Total</u>
<u>ALBERTA & GR. WATERWAYS</u>	Carbondale, Alta. to Waterways, Alta.	232.00	
	Spurs	1.21	283.21
<u>ALGOMA CENTRAL & H.B.</u>	Sault Ste. Marie, Ont. to Hearst Jct. Ont.	292.87	
	Hark Jct. Ont. to Brient, Ont.	24.58	
	Branches & Spurs	19.72	337.17
Algoma Central Terminals (Leased)	Sault Ste. Marie	9.23	346.20
<u>ALGOMA EASTERN</u>	Sudbury, Ont. to Turner, Ont.	85.89	
Algoma Eastern Terminals (Leased)	Turner, Ont. to Little Current, Ont.	1.52	85.41
<u>ATLANTIC, QUEBEC AND WESTERN</u>	Paspebiac, Que. to Gaspé, Que.	102.75	
Under contract (Quebec Oriental)	New Carlisle, J. Que. to West Paspebiac, Que.	.75	103.50
<u>BRANDON, SASK. & H.B.</u>	Interprovincial Bdy. near Bannerman, Man. to Brandon.	69.45	69.45
<u>BRITISH YUKON</u>	White Pass, B.C. to White Horse, Y.T.	90.32	90.32
<u>CANADA & GULF TERMINAL</u>	Mont. Joli, Que. to Hammermill, Que.	38.1	38.1
<u>CANADIAN NATIONAL</u>			
<u>Prince Edward Island</u>			
Prince Edward Island (1)	Charlottetown to Royalty Jct. to Tignish	115.26	
" " "	(N) Charlottetown to Murray Harbour	47.70	
" " "	(N) Royalty Jct. to Harmony Jct. to Souris	54.98	
" " "	(N) Harmony Jct. to Elmira	9.89	
" " "	(N) Mt. Stewart Jct. to Georgetown	24.10	
" " "	(N) Montague Jct. to Montague	6.36	
" " "	Emerald Jct. to Borden	12.58	
" " "	Alberton Wye Switch to Alberton	0.30	
" " "	(N) Lake Verde to Vernon	4.43	
" " "	(N) Branches & Spurs	1.33	
	Total - Prince Edward Island		276.93
(N) Narrow Gauge 3' 6"			

<u>NAME OF ROAD</u>	<u>LOCATION</u>	<u>MILES OF LINE</u>
		<u>Total</u>
<u>CANADIAN NATIONAL- Cont'd.</u>		
<u>Nova Scotia</u>		
Intercolonial Ry.	(1) Halifax to Truro to Inter-provincial Bdy. near Port Lawrence	144.15
"	" Truro-Point Tupper-Sydney, C.B.	224.28
"	" St. Peter's Jct. to St. Peters	25.50
"	" Oxford Jct. to Brown's Point	67.51
"	" Stellarton to Pictou	13.81
Can. Govt. Rys.	Ferrona Jct. to Sunny Brae	12.48
Intercolonial Ry.	New Glasgow to Pictou Landing	8.24
"	" Pugwash Jct. to Pugwash	4.56
"	" Windsor Jct. to Stewart	81.87
Halifax & So. Western	(5) So. Western Jct., Halifax to Yarmouth	245.78
"	" Bridgewater to Port Jade	92.33
"	" Calidonia Jct. to Calidonia	21.92
"	" Mahone Jct. to Lunenburg	6.84
"	" Rapid Falls to Liverpool	4.63
Vale Ry. (Leased by Can. Govt. Rys.)	(3) New Glasgow to Thorburn	5.79
	Branches & Spurs	10.68
	Total - Nova Scotia	970.37
<u>New Brunswick</u>		
Intercolonial Ry.	(1) Interprovincial Bdy. near Port Lawrence to Franklin Jct.	48.11
National Transcontinental Ry.	(2) Franklin Jct. to Pacific Jct.	7.29
Intercolonial Ry.	(1) Pacific Jct. to Interprov. Bdy. at Matapedia, Que.	187.02
"	" Derby Jct. to Fredericton	110.47
"	" Moncton to St. John	89.31
St. John & Quebec	(3) St. John to Westfield Beach (C.P.R.) - Westfield Beach to Centreville	157.84
Intercolonial Ry.	(1) Nelson Jct. to Loggieville	13.77
"	" Dalhousie Jct. to Dalhousie	6.66
"	" Painses Jct. to Point du Chene	11.98
Nat. Transcontinental Ry.	(2) Pacific Jct. to Edmundston to Interprov. Bdy. N.B. & Que.	245.42
Can. Government Rys.	(3) Tidehead to N.T.R. Jct. St. Leonard	105.14
"	" Gloucester Jct. to Tracadie	72.98
"	" Pokemouche Jct. to Shippegan	6.85
"	" Stanley Jct. to Stanley	5.40
"	" Sackville to Cape Tormentine	36.13
"	" Buctouche Jct. to Buctouche	29.93
"	" Salisbury to Albert	44.77
"	" Elgin to Petitecodiac to Havelock	26.12
"	" Hampton to St. Martins	28.75
Van Buren Bridge Co. (Leased by Can. Govt. Rys.)	(3) Near St. Leonard N.B.	0.62
	Branches & Spurs	8.52
	Total - New Brunswick	1,243.08

<u>NAME OF ROAD</u>	<u>LOCATION</u>	<u>MILES OF LINE</u>
CANADIAN NATIONAL - Cont'd.		<u>Total</u>
<u>Quebec</u>		
Intercolonial Ry.	(1) Interprov. Bdy. Matapedia to Riv. du Loup to Levis to Point Levis	292.65
Grand Trunk Ry.	(6) Point Levis to Hadlow	0.95
Intercolonial Ry.	(1) Hadlow to Charny	5.77
Grand Trunk Ry.	(6) Charny to Chaudiere	1.53
Intercolonial Ry.	(1) Chaudiere to St. Leonard Jct. to St. Rosalie Jct.	115.96
"	" St. Charles Jct. to West Jct.	16.75
"	" St. Leonard Jct. to Nicolet	14.70
Nat. Transcontinental	(2) Interprov. Bdy. N.B. & Que. to Monk to Diamond Jct. Diamond Jct. to Joffre (Intercolonial)	199.14
Can. Government Ry.	(5) Joffre to N.I. 47 from Joffre towards Bridge	1.47
"	" Villeroy to Deschailions	16.58
Nat. Transcontinental	(2) N.I. 47 from Joffre to Cadorna	9.78
Can. Pacific Ry. (Under contract)	(2) Cadorna to Palais Stn. (Joint N.P.R. & C.P.R.)	2.96
Nat. Transcontinental	(2) Viaduc to St. Marc-St. Prospre-Fitzpatrick-Parent-O'Brien to Interprov. Bdy. - La Reine	493.51
Can. Northern Ry.	(5) Limoilon Jct. Quebec to St. Marc.	47.77
"	" St. Marc to St. Prospre (Nat. Transcontinental)	-
"	" (5) St. Prospre to Joliette to Montreal-Moreau St.	115.17
"	" (5) Montreal (Tunnel Terminals) to Interprov. Bdy. Grenville.	53.85
"	" Joliette to Cushing Jct.	61.58
"	" Aldred Jct. to Shawinigan Falls	5.80
"	" Riv. a Pierre Jct. to Garneau Jct.	39.84
"	" Paradis to Rawdon	15.77
"	" Rinfret Jct. to Huberdeau	45.23
"	" Lazard to Cartierville	0.79
"	" (5) Interprov. Bdy. Fitzroy to Interprov. Bdy. Portage du Fort	22.50
Grand Trunk Ry.	(6) International Bdy. Norton Mills to St. Henry East Jct.	130.21
"	" (6) Bonaventure to Interprov. Bdy. River Beaudette	45.12
"	" Chaudiere to Richmond	87.14
"	" Victoriaville to Doucetts Landing	35.34
"	" Brossau Jct. to Intern'l. Bdy. Fort Covington	61.56
"	" Intern'l. Bdy. Lacolle Jct. to St. Lambert	42.43
"	" Intern'l. Bdy. South of Hemmingford to St. Isidore Jct.	24.15
"	" St. Henri Wye-West Leg	0.34
"	" Intern'l. Bdy. Alburg Jct. to Interprov. Bdy. West of St. Justine	66.03
Beauharnois Jct. Ry.	(5) St. Martine Jct. to Beauharnois	5.90

<u>NAME OF ROAD</u>	<u>LOCATION</u>	<u>MILES OF LINE</u>
		<u>Total</u>
<u>CANADIAN NATIONAL - Cont'd.</u>		
<u>Quebec Cont'd.</u>		
Grand Trunk Ry.	(6) Wye at Lacolle Jct.	0.24
" "	Wye at Howick Jct.	0.17
Quebec R.L. & P. Ry. (Leased by Quebec & Saguenay Ry.)	(3) St. Joachim to Cap Tourmente	5.30
Quebec & Saguenay Ry. Quebec & Lake St. John Ry.	(3) Cap Tourmente to La Malbaie	57.30
	(5) Quebec to Lake Edward to Chicoutimi	227.50
James Bay & Eastern Montreal & Province Line (Leased by C.N.R.)	(5) Chambord Jct. to St. Pelicien	29.70
" " " "	(7) St. Lambert to Frelightsburg	50.26
	Marieville to St. Cesaire	8.60
Stanstead, Shefford & Chambly Ry. (Leased by C.N.R.)	(7) Farnham to Waterloo	29.86
	Branches & Spurs	63.83
	Total - Quebec	2,545.25
	# Not included in total	
<u>Ontario</u>		
Nat. Transcontinental	(2) Interprov. Bdy. La Reine to Cochrane to Sioux Lookout to Interprov. Bdy. Ophir. Long Lac to Nakina	758.55 29.50
Grand Trunk Pacific (Leased by N.T.R.)	(2) Syndicate Ave. Ft. William to Westport	0.98
" " "	Mission Terminals. to Empire Ave. Jct.	2.26
" " "	Midway to Dog River Jct.	28.89
" " "	Connee to Superior Jct.	159.56
Can. Northern Ry.	(5) Interprov. Bdy. Hawkesbury to Hurdman	57.32
" "	Conn. at Hawkesbury	0.19
" "	Hurdman to Rideau Jct. to Napanee to Brighton (Brighton-Cobourg, G.T.)	154.97
" "	Cobourg to Todmorden	73.53
" "	(5) Ottawa Jct. to Riverside	0.30
" "	(5) Rideau Jct. to Interprov. Bdy. near Pontiac	31.79
" "	(5) Interprov. Bdy. Portage du Fort to Brent to Capreol	248.54
" "	(5) Conn. at Pembroke	0.55
" "	(5) Conn. to T. & N.O. Yd. North Bay	0.45
" "	Conn. to T. & N.O. Ry. North Bay	0.25
" "	(5) C.N. Jct. to Jct. with Double Track, North Bay	0.82
" "	(5) Rosedale to Todmorden to Parry Sound to Capreol to Hornepayne to Current Jct.	864.94
" "	(5) Conn. at Otter Lake	0.12
" "	Oriole to Donlands	2.10
" "	Donlands to Dovercourt Rd (CPR)#	6.70
" "	Milnet to Sellwood	4.20
" "	Sudbury Jct. to Sudbury	5.37
" "	C.N. Jct. to Algo	2.40
" "	(5) Port Arthur to Intern'l Bdy. Rainy River	285.45
" "	Fort William Loop Line	1.80
" "	Conn. at Midway	0.19

<u>NAME OF ROAD</u>	<u>LOCATION</u>	<u>MILES OF LINE</u>
		<u>Total</u>
<u>CANADIAN NATIONAL - Cont'd.</u>		
<u>Ontario-Cont'd.</u>		
Can. Northern Ry.	(5) Duluth Jct. to Intern'l. Bdy. Jct. with D.R.L. & W. Ry.	1.48
" "	Twin City Jct. to Mackies	35.14
Brockville W. Port & N.W. Ry.	Lyn to West Port	40.14
Irondale, Bancroft & Ottawa Ry.	York River to Howland	50.96
Bay of Quinte Ry.	Yarker to Bannockburn	53.25
Central Ontario Ry.	Piston to Trenton	30.56
" "	Trenton to Haynooth	101.70
" "	Ormsby Jct. to Gee Hill	7.20
Grand Trunk Ry.	(6) Interprov. Bdy. St. Justine to Ottawa	65.80
" "	(6) Riverside to Rideau Canal	0.82
" "	(6) Gladstone Ave. Ottawa to Madawaska to Depot Harbour	262.84
" "	(6) Wye at Scotia Jct.	0.74
" "	(6) Interprov. Bdy. River Beaudette to Belleville to Toronto to Guelph to Stratford to Sarnia	457.72
" "	(6) Conn. at Brighton	0.47
" "	(6) Conn. at Cobourg	0.27
" "	Kingston Jct. to Kingston City	2.25
" "	Belleville Harbour to Lindsay to Midland	163.96
" "	Port Hope to Lakefield	40.19
" "	Madoc Jct. to Madoc	15.14
" "	Hillbrook Jct. to Omamee	15.12
" "	Blackwater Jct. to Coboconk	35.19
" "	Wye at Lorneville	0.20
" "	Scarboro Jct. to Lindsay	60.44
" "	Jhitby Jct. to Manilla Jct.	35.71
" "	Lindsay to Haliburton	54.38
" "	Stouffville Jct. to Jackson's Point	26.91
" "	Parkdale Jct. to Allandale to Mashago to Hipissing	220.07
" "	T. & N.O. Yd. to C.N. Jct. 1.12M (T. & N.O. Ry.)	-
" "	Burlington Jct. to Allandale	84.48
" "	Allandale to Meaford	52.29
" "	Colewell Jct. to Penetang	33.63
" "	Birch to Tay	8.90
" "	Beeton to Collingwood	41.50
" "	Bathurst St. Jct. to Canpa to Hamilton Jct.	36.22
" "	Don Jct. to Rosedale	1.99
" "	Galt - Kitchener - - Elmira	25.01
" "	Alford to Harrisburg to Southampton	131.35
" "	Wye at Guelph Jct.	0.37
" "	Stratford to Palmerston to Durham incl. wye at Palmerston	64.00
" "	Listowel to Kincardine	56.98
" "	Harriston to Owen Sound	65.26
" "	Parkhead Jct. to Warton	10.56
" "	Amigari to Bridgeburg	1.21
International Bridge Co.	Bridgeburg to Intern'l. Bdy.	0.34

NAME OF ROAD	LOCATION	MILES OF LINE	
			Total
<u>CANADIAN NATIONAL- Cont'd.</u>			
<u>Ontario-Cont'd.</u>			
Grand Trunk Ry.	Stratford to Cutoff	1.63	
" "	Tavistock Jet. to Port Dover	55.60	
" "	Jyes at Simcoe & Woodstock	0.38	
" "	Simcoe Jet. to Port Rowan	17.00	
" "	St. Mary's to London East	20.91	
" "	Brantford to Tilsonburg Jet.	35.97	
" "	Cannon St. Hamilton to Burlington incl. Grimsby Sub.Conn.	11.21	
" "	Stoney Creek to Beach Road	2.08	
" "	Gage's Spur	0.50	
" "	Port Dover Jet. to Port Dover	41.31	
" "	Jyes at Caledonia and Jarvis	0.39	
" "	Bayview to Redbank	0.36	
" "	Hamilton Jet. to London to Sarnia to Intern'l. Bdy. (excl. Brantford Jet. to Paris Jet.)	150.59	
" "	Hamilton Jet. to Clifton Jet.	43.96	
" "	Lynden Jet. to Paris Jet.	12.95	
" "	Port Dalhousie to Port Robinson	13.13	
" "	Niagara Falls to Port Robinson to Welland Jet. to Port Colborne	22.17	
" "	Jyes at Welland Jet.	0.47	
" "	Bridgeburg to Windsor	225.06	
" "	Hyde Park Jet. to Wingham Jet. incl. Clinton Jet. Jye.	68.75	
" "	Wyoning to Petrolia	5.74	
" "	Jet. at Sarnia to Point Edward	4.85	
" "	Komoka to Glencoe	20.44	
" "	Kingscourt Jet. to Glencoe	20.92	
Central Counties Ry. (Leased by G.T.R.)	Glen Robertson to Hawkesbury	21.92	
" " "	Jye at Glen Robertson	0.32	
Pembroke Southern Ry. (Leased by G.T.R.)	Golden Lake to Pembroke	21.09	
" " "	Jye at Golden Lake	0.27	
Buffalo & Lake Huron Ry. (Leased by G.T.R.)	Amigari to Stratford to Goderich	159.15	
Suspension Br. Co. (Leased by G.T.R.)	Niagara Falls to Intern'l Bdy. Branches & Spurs	0.13	32.83
	Total - Ontario		6,099.14
	# Not included in total		
<u>Manitoba</u>			
Nat. Transcontinental Ry.	(2) Interprov. Bdy. Ophir to Transcona to So. Side Water St. Winnipeg	89.48	
Can. Northern Ry.	(5) Intern'l. Bdy. Middleboro to Paddington to Terminals. Cutoff Winnipeg	107.42	
" "	Jet. St. Boniface to Clark St. Jet.	2.08	
Red River Valley Ry. (Leased by Can. Nor. Ry.)	Winnipeg South Side Water St. to Portage Jet. to Intern'l. Bdy. Emerson	65.70	

<u>NAME OF ROAD</u>	<u>LOCATION</u>	<u>MILES OF LINE</u>
		<u>Total</u>
<u>CANADIAN NATIONAL RY.- Cont'd.</u>		
<u>Manitoba - Cont'd.</u>		
Nor. Pac. & Manitoba Ry. (Leased by Can. Nor. Ry.)	(5) Portage Jet. to Carman Jet. to Portage La Prairie	52.41
Portage & N.W. Ry. (Leased by Can. Nor. Ry.)	(5) Portage La Prairie to Beaver	19.71
Can. Northern Ry.	(5) Beaver to Dauphin to Interprov. Bdy. near Sogo	181.45
Nor. Pac. & Manitoba Ry. (Leased by Can. Nor. Ry.)	Winnipeg Transfer Ry.	1.20
" " "	Morris to Somerset to Belmont to Hartney	156.31
" " "	Hartney Jet. to M&B Jet. to Brandon	39.85
" " "	Transfer to G.N. Ry. at Minto	0.20
Portage & N.W. Ry. (Leased by Can. Nor. Ry.)	Delta Jet. to Delta	14.70
Can. Northern Ry.	Oakland to Alonza	61.92
" "	St. James Jet. to Gypsum- ville	156.75
" "	Grosse Isle to Hodgson	80.73
" "	Steep Rock Jet. to Steep Rock	12.13
" "	Beach Jet. to Victoria Beach	70.22
" "	Grand Marais to Grand "	0.92
" "	South Jet. to G.N. Jet. Emerson	70.98
" "	Emerson Jet. Sw. to Intern'l Bdy.	1.72
" "	Ochre River to St. Rose	11.14
" "	Muir to McCreary Jet.	70.44
" "	Brandon Jet. to Carberry Jet.	22.83
" "	Hallboro to Beulah	74.40
" "	Rosburn Jet. to Russell to Interprov. Bdy.	133.35
" "	Conn. at Knox	0.10
" "	Connaught to Somerset Jet.	78.80
" "	Carman Jet. to Notre Dame de Lourdes	2.55
" "	Greenway to Deloraine	79.83
" "	Hartney to Verdun	57.15
" "	Conn. at Hartney	0.13
" "	West Tower Portage La Prairie to H.B. Jet. Brandon	77.00
" "	Sixth St. Brandon to Inter- provincial Bdy. near Butler	69.70
" "	North Jet. to Swan River to Interprov. Bdy. near Westgate	168.95
" "	Sifton Jet. to Winnipegosis	20.74
" "	Thunderhill Jet. to Interprov. Bdy. near Benito	20.17
" "	Interprov. Bdy. near Turnberry to The Pas.	38.10
Hudson Bay Ry. (CGR)	(3) The Pas. to Pikwitonei	214.00
Grand Trunk Pacific Ry.	(4) Woodward Ave. Jet. Winnipeg to Pacific Jet. to G.N. Jet. Portage La Prairie	52.42
" " "	Portage La Prairie to Rivers to Interprov. Bdy. near Victor	157.56
" "	Conn. at Portage La Prairie, Petrol & Knox	0.80
	Branches & Spurs	6.98
	Total - Manitoba	2,522.72

<u>NAME OF ROAD</u>	<u>LOCATION</u>	<u>MILES OF LINE</u>
		<u>Total</u>
<u>CANADIAN NATIONAL RY.- Cont'd.</u>		
<u>Saskatchewan</u>		
Can. Northern Ry. (5)	Interprov. Bdy. near Togo to Kamsack to Humbolt to No. Battleford to Interprov. Bdy., Lloydminster-Trans. at Totzke	400.54 0.10
"	Interprov. Bdy. Butler to Kipling to C.N. Jet. Regina	150.18
"	C.N. Jet. to Regina 1.25 ml. (C.P.R.)	-
"	Maryfield to Carlyle to Lampman to Radville to Moose Jaw	228.08
"	Transfer at Moose Jaw	1.07
"	Luxton to Estevan	25.00
"	Bengough Jet. to Bengough	42.85
"	Gravelbourg Jet. to Hodgeville	104.10
"	Wroxton to Ross Jet.	37.85
"	Eye at Wroxton	0.25
"	Interprov. Bdy. to Willowbrook	60.42
"	Conns. at Yorkton	0.24
"	Canora to Sturgis Jet.	21.46
"	Conn. at Canora	0.08
"	Interprov. Bdy. near Benito to Kelvington	93.35
"	Interprov. Bdy. to Hudson Bay Jet. to Melfort to Cudworth Jet. near Pr. Albert	188.15
"	Hudson Bay Jet. to Interprov. Bdy. near Turnberry	49.40
"	Conns. etc. at Prince Albert	1.08
"	Melfort to Ridgedale	22.92
"	Melfort to Humbolt	54.14
"	Prince Albert to Denholm	116.55
"	Shellbrook to Big River	57.08
"	No. Battleford to St. Walburg	76.97
"	Battleford Jet. to Battleford	7.76
"	Dalmeny to Carlton	35.93
"	Saskatoon to Yorath Jet. to Kindersley to Interpro. Bdy. Alsask	170.28
"	Conn. at N. 68.6 near Pym	0.32
Can. Pac. Ry. (Under contract)	" " " " " " (Joint CNR & CPR)	0.39
Can. Northern Ry.	Tichfield to Eatonia to Alsask	148.03
"	Delisle to Beechy	94.33
"	Conn. at Conquest	0.06
Can. Pacific Ry. (Under Contract) (5)	" " " (Joint CNR&CPR) #	0.25
Qu'Appelle Long Lake & Sask. Ry. (Under Contract-Can. Nor. Ry. (5)	Dewdney St. Regina to Qu'Appelle Jet.	1.17
"	Craik Jet. to Nutana to Jarmen to Prince Albert	246.04
"	So. Yd. Pr. Albert to East Pr. Albert	1.34
"	Conn. at Nutana	0.49
"	" " Saskatoon	0.75
"	" " Jarmen	0.75
Grand Trunk Pacific (4)	Interprov. Bdy. near Victor to Melville to Watrous to Biggar to Interprov. Bdy. near Artland	415.02
"	Connections at Yorath	0.24
"	Melville to Canora	54.71
"	Connections at Yorkton	0.14
"	Biggar to Loverna	103.45
"	Oban to Battleford	48.25
"	Connections at Battleford, bet. Porter & Outknife Subs.	0.62

<u>NAME OF ROAD</u>	<u>LOCATION</u>	<u>MILES OF LINE</u>
<u>CANADIAN NATIONAL RY.- Cont'd.</u>		<u>Total</u>
<u>Saskatchewan-Cont'd</u>		
Grand Trunk Pacific Ry.	Melville to Qu'Appelle Jct. to Craik Jct.to Riverhurst	206.07
"	" " West Leg of Wye at West Yd. Regina	0.23
"	" " West Yard to GTP Stn. Regina	2.97
"	" " Boundary Wye-North Switch to South Switch	0.34
"	" " Connections at Regina	0.14
"	" " Boundary wye to Northgate	154.32
"	" " Calmage to Weyburn	13.60
"	" " Young to Cudworth Jct.to Jct. at Pr.Albert	110.88
"	" " Battleford to Carruthers	46.28
"	" " Connection at Battleford	0.21
	Branches & Spurs	<u>4.51</u>
	Total - Saskatchewan	3,601.11
	# Not included in total	
<u>Alberta</u>		
Can.Northern Ry.	(5) Interprov.Bdy. Lloydminster to Vermilion to North Edmonton	166.29
"	" St.Paul Jct. to St.Paul	120.22
"	" Vegreville Jct. to Camrose Jct.	46.72
"	" Camrose S.E.Jct.to Alliance	59.25
"	" Terml.Jct.near Edmonton to Looma to Jct.Bashaw Sub.	43.82
"	" Calder Yd.Switch to Edmonton Stn.to E.Y&P Jct.to Terml. Jct. to Strathcona	14.19
"	" Connections near Edmonton	0.10
"	" St.Albert to Athabasca	84.91
"	" Cardiff Jct. to Cardiff	2.29
"	" Interprov.Bdy.Alsask to Hanna to Calgary	228.71
"	" Connection at Dunshalt	0.28
"	" Battle Jct. to Munson Jct.	100.03
"	" Medicine Hat Jct.to Steveville	58.75
"	" Warden to Alix North Jct.	22.01
"	" Alix South Jct.-Otway	91.12
"	" Otway - Ullin (C.P.R.)	55.00
"	" Ullin to Brazeau	6.06
Grand Trunk Pacific	Tofield to Jct.with Strathcona sub. near Camrose	23.27
Can.Northern Ry.	Jct. with Strathcona Sub. to Battle-Duhamel Conn.	10.65
Grand Trunk Pacific	Battle-Duhamel Conn. to Mirror to Barlow Jct. to Calgary	169.46
"	" Battle Jct. Wye	0.36
Can.Northern Ry.	Connection at Camrose	0.14
Grand Trunk Pacific	(4) Interprov.Bdy.Artland to Wainwright to East Jct. No. Edmonton to West Jct.	166.37
"	" East Jct.Switch to 101st. St.Edmonton	3.45
"	" 121st St.Edmonton to Union Jct. to Lobstick(M.73.50 Mabaun Sub.)	72.11
"	" Connections at Edmonton	0.57

<u>NAME OF ROAD</u>	<u>LOCATION</u>	<u>MILES OF LINE</u>	
			<u>Total</u>
<u>CANADIAN NATIONAL RY.- Cont'd.</u>			
<u>Alberta-Cont'd.</u>			
Can. Northern Ry.	(5) Lobstick (M.73.50) to Chip Lake (M.86.90)	13.40	
Grand Trunk Pac.	(4) Chip Lake (M.86.90 Mabamun Sub.) to Obed (M.55.53 Brule Sub.)	77.88	
Can. Northern Ry.	(5) Obed (M.55.53) to Snaring (M.94.94 Brule Sub.)	59.61	
Grand Trunk Pac.	(4) Snaring (M.94.94) to Jasper to Geikie	20.81	
Can. Northern Ry.	(5) Geikie to Interprov. Bdy. Mount Cavell	7.87	
Grand Trunk Pac.	Bickerdike Jet. to Lovett	55.53	
Mountain Park Coal Co. (Under contract GTRy.)	Coal Sour to Mountain Park	31.80	
Luscar Colliery Co. (Under Contract G.T.P. Ry.)	Leyland to Luscar	5.11	
Can. Northern Ry.	(5) Union Jet. to Peace River to Jet. with Mabamun Sub.	65.57	
" "	Peace River Jet. to Whitticourt	72.15	
	Branches and Spurs	<u>5.26</u>	
	Total - Alberta		1,964.92
<u>British Columbia</u>			
Grand Trunk Pac.	(4) Red Pass Jet. to McBride to Prince George to Smithers to Prince Rupert	676.76	
Can. Northern Ry.	(5) Interprov. Bdy. Mount Cavell to Blue River to Kamloops Jet. to Vancouver	499.00	
" "	Kamloops Jet. to Kamloops	2.78	
" "	Victoria to Cowichan	69.40	
" "	Jet. near Victoria to Patricia Bay	15.53	
" "	Sidney Jet. to Sidney	1.67	
	Branches & Spurs	<u>3.80</u>	
	Total - British Columbia		1,268.94
	TOTAL LINES IN CANADA		20,492.46

Lines Extending into the United States

<u>Vermont</u>			
Vermont & Province Line RR.	(6) Intern'l. Bdy. to Alburgh Jet.	3.11	3.11
<u>New York</u>			
Champlain & St. Lawrence RR.	(6) Intern'l. Bdy. to Rouses Point.	1.21	
U.S. & Canada RR.	(6) Intern'l. Bdy. Ft. Covington to Massena Springs	22.18	
Suspension Bridge Co. (Leased by G.T. Ry.)	(6) Intern'l. Bdy. (Niagara Falls) to N.Y.C. Conn. Suspension Br.	0.12	
Intern'l. Bridge Co.	(6) Intern'l. Bdy. to Black Rock	<u>0.68</u>	24.19

<u>NAME OF ROAD</u>	<u>LOCATION</u>	<u>MILES OF LINE</u>	
			<u>Total</u>
<u>CANADIAN NATIONAL RY.- Cont'd.</u>			
<u>Lines Extending into the United States-Cont'd.</u>			
<u>Michigan</u>			
St.Clair Tunnel Co.	(6) Intern'l Bdy. to Port Huron	1.01	1.01
<u>Minnesota</u>			
Minnesota & Manitoba Ry.	(5) Intern'l.Bdy. Rainy River to Intern'l.Bdy.Middleboro	43.76	43.76
Total Lines Extending into United States			72.07
Total Lines in Canada			20,492.46
Total Canadian National Railways			20,564.53

- (1) Main Line Intercolonial Railway
- (2) " " National Transcontinental Railway
- (3) " " Other Canadian Government Lines
- (4) " " Grand Trunk Pacific Railway
- (5) " " Canadian Northern Railway
- (6) " " Grand Trunk Railway
- (7) " " Canadian National Railways

NAME OF ROAD	LOCATION	MILES OF LINE	
			Total
<u>CANADIAN PACIFIC</u>			
<u>New Brunswick</u>			
#Carleton City of St. John Branch Ry.	X West St. John to Fairville	3.51	
St. John Bridge & Ry. Extension Co.	St. John to Fairville	1.75	
New Brunswick Ry.- # St. John & Maine	X Fairville - Fredericton Jct.- St. Croix River, Vanceboro	88.34	
#New Brunswick Southern.	West St. John to Shore Line Jct.	82.37	
New Brunswick Railway- # N. Brunswick & Canada	St. Andrews to Watt to		
" " "	Debec to Intern'l. Bdy.	87.95	
" " "	Watt to St. Stephen	19.10	
#St. Stephen & Milltown New Brunswick Railway- # N. Brunswick & Canada	Milltown Jct. to Milltown	4.64	
#Fredericton Railway	Debec to Woodstock	10.71	
Intercolonial Ry.	Fredericton Jct. to Fredericton	22.31	
	Fredericton to Gibson (Running Rights)		
	Gibson to Newburg	58.47	
#Southampton Railway	Southampton to Otis	12.62	
#New Brunswick Railway	Woodstock to Edmundston	111.83	
	Aroostook to Intern'l. Bdy.	4.81	
#Tobique Valley Ry.	Perth Jct. to Plaster Rock	28.07	
	Total New Brunswick		536.48

Lines in States of Maine & Vermont

Trackage rights			
Maine Central	X Intern'l. Bdy. to Mattawankeag to Vanceboro	56.58	
Atlantic & North West- # International Railway of Maine	Mattawankeag to Intern'l. Bdy. near Herantic	114.68 144.	
New Brunswick Railway- #Aroostook River Ry.	Intern'l. Bdy. (N.B.) to Presque Isle, Me.	29.52	
#Houlton Br. Railway	Intern'l. Bdy. (N.B.) to Houlton, Me.	3.16	
Orford Mountain Ry.- #Midland Ry. of Vt.	Intern'l. Bdy. (Que.) to Elkhurst, Vt.	.95	
	Total in Maine & Vermont		178.11

Quebec

Atlantic & Northwest- # International Ry.	X Intern'l. Bdy. near Merantic to Lennoxville	80.58	
	X Lennoxville to Brookport	60.24	
Montreal & Atlantic	Brookport to Farnham		
	X Farnham to St. Lawrence River	35.74	
#Ontario & Quebec	X St. Lawrence River to Mile End, Montreal	9.06	
Quebec, Montreal Ottawa & Occidental	X Montreal to Ottawa	119.2	
#Orford Mountain Ry.	Windsor Hills to Mansonville to Intern'l. Bdy.	57.95	
North Shore Ry.	Quebec to St. Martins	159.76	
	Piles Jct. to Grand Piles	27.03	
Cap de la Madeleine	" " to Cap de la Madeleine	2.44	
St. Maurice Valley Ry.	Three Rivers to Grand mere	27.47	
North Shore Ry.	Berthier Jct. to Berthier	2.08	
	Lanoraie to St. Felix	16.65	
#Joliette & Brandon Ry.	St. Felix to St. Gabriel	12.02	

- Leased

<u>NAME OF ROAD</u>	<u>LOCATION</u>	<u>MILES OF LINE</u>
		<u>Total</u>
<u>CANADIAN PACIFIC - Cont'd.</u>		
<u>Quebec - Cont'd.</u>		
St. Eustache Ry.	St. Therese to St. Eustache	6.02
Quebec, Montreal, Ottawa & Occidental	" " to St. Jerome	13.27
Montreal & Western	St. Jerome to Labelle	66.93
# Northern Colonization Co. Laurentian Railway	Labelle to Mont Laurier	58.47
" Ottawa Northern & Western Ry.	St. Lin Jct. to St. Lin	15.17
# Pontiac Pacific Jct.	Hull to Maniwaki	80.85
# Quebec, Montreal, Ottawa & Occidental	Interprov. Bdy. to Hull	1.31
# Pontiac Pacific Jct.	Hull to Aylmer	7.38
# Lake Temiskaming Colonization Ry.	Aylmer to Waltham	70.49
	Interp. Bdy. at Mattawa, Ont. to Temiskaming	37.10
# Interprovincial & James Bay	Temiskaming Jct. to Kipawa	9.13
	Gendreau to Angliers	69.05
# Ontario and Quebec Ry.	Gaboury to Ville Marie	7.64
	Montreal-Ballantyne-Vaudreuil -St. Polycarpe Jct.- Interprov. Bdy.	46.68
	Ballantyne to St. Luc	2.15
# Montreal & Ottawa Ry.	Highlands Jct. to End of Track	6.03
	Vaudreuil-Rigaud-Interprov- incial Bdy.	21.65
# Glengarry & Stormont Ry.	Rigaud to Point Fortune	6.80
	Soulanges to Interprov. Bdy.	4.72
	Total in Quebec	1,141.06
<u>Ontario</u>		
Canada Central Ry.	X Ottawa-Carleton Place- Pembroke-Bonfield	224.88
Canadian Pacific	X Bonfield-Sudbury-Port Arthur -Interprov. Bdy. near Ingolf	978.75
Lake Temiskaming Colon- ization Ry.	Mattawa to Interprov. Bdy.	1.0
Quebec, Montreal, Ottawa & Occidental Ry.	Broad St. Ottawa to Inter- prov. Bdy.	1.01
# Montreal & Ottawa Ry.	Interprov. Bdy-Caledonia Springs-Canada Atlantic Jct. Ottawa	65.16
# Ottawa Northern & Western- Pontiac Pacific Jct.	Union Station, Ottawa to Interprov. Bdy.	.91
# St. Lawrence & Ottawa	Ottawa to Prescott	53.93
	Ottawa to Ellwood	4.65
Canada Central Ry.- Brockville & Ottawa Ry.	Carleton Place to Brockville	44.95
# Kingston & Pembroke Ry.	Renfrew to Kingston	103.46
	Godfrey to Glendower	4.10
# Atlantic & North West Canadian Pacific	Payne to Eganville	19.60
	Sudbury to Intern'l. Bdy. at Sault Ste. Marie	181.25
	Sudbury to Blizzard Mine	4.91
Thessalon & Northern Fort William Terminal	Thessalon Jct. to Thessalon Tracks at Port William	1.85
# Ontario & Quebec	Interprov. Bdy. to Smith's Falls	8.00
# Brockville & Ottawa Ry.	Smiths Falls to Perth	82.52
	X Perth to Peterboro to West Toronto	11.56
# Credit Valley Ry.	Toronto to Woodstock	199.01
# West Ontario Pacific	Woodstock to London	87.75
# Detroit Extension	London to Windsor	26.72
	Leaside to Toronto	112.58
# Glengarry & Stormont	Interprov. Bdy. to Cornwall	5.29
		22.88

NAME OF ROAD	LOCATION	MILES OF LINE	
			Total
<u>CANADIAN PACIFIC - Cont'd.</u>			
<u>Ontario - Cont'd.</u>			
# Campbellford, Lake Ont. and Western	Glen Tay-Trenton-Agincourt	183.51	
# Georgian Bay & Seaboard	Dranoel to Lindsay to Port McNicoll	87.0	
	Portswitch to Coldwater	1.3	
# Lindsay, Bobcaygeon & Pontypool Ry.	Burketon to Bobcaygeon	38.79	
# Ontario & Quebec Ry.			
# Toronto, Grey & Bruce	Toronto to Owen Sound	119.50	
# Walkerton & Lucknow Ry.	Saugeen to Walkerton	37.77	
# Ontario, Quebec Ry.-			
# Toronto, Grey & Bruce	Fraxa to Teeswater	67.91	
	Mt. Forest to The Tank	1.20	
	Wingham Jct. to Wingham	4.64	
	Parkdale to Queen's Wharf, Toronto	1.20	
# Credit Valley Ry.	Streetsville Jct. to Melville	31.83	
	Cataract to Elora	27.38	
	Woodstock to St. Thomas	33.58	
# Tilsonburg, Lake Erie & Pacific	Embros-Ingersoll-Port Burwell	44.28	
St. Mary's & Western Ont.	Embros to St. Mary's	15.08	
# South Ontario Pacific	Hamilton to Guelph Jct.	16.30	
# Toronto, Hamilton & Buffalo	Hamilton Jct. to Garth St. Hamilton	1.47	
# Guelph Jct. Ry.	Guelph Jct. to Guelph	14.91	
# Guelph & Goderich	Guelph to Goderich	80.65	
	Linwood to Listowel	16.49	
Canadian Pacific Ry.	Bolton to Romford	226.16	
	Total in Ontario		3,297.67
<u>Manitoba</u>			
Canadian Pacific	X Interprov. Bdy. near Ingolf-Molson-Salado-Winnipeg-Portage La Prairie-McGregor-Virden-to Interprov. Bdy. near Kirkella	307.0	
	Molson to Lac du Bonnet	21.5	
	Molson-Lydiaff-Red River Bridge	36.0	
	Woodman to N. Transeona	13.98	
	Rugby to Selkirk-Riverton	82.64	
	Rugby to Stonewall-Teulon-Komarno-Arborg	74.97	
	Whittier to Emerson	64.10	
	Rugby to Manitou	100.40	
# Manitoba South West Col. Co.	Manitou to Deloraine	100.50	
# Canadian Pacific	Deloraine to Lyleton	37.46	
	Rosenfeld to Gretna	14.10	
	Rudyard to Kaleida	6.25	
	Woodbay to Windygates	32.4	
	Snowflake to Fallison	10.0	
	Boissevain to Lauder	35.5	
	Deloraine to Napinka	18.6	
# Manitoba South West Col. Co.	Rugby to Glenboro	102.7	
Canadian Pacific	Elm Creek to Carman	12.5	
	Glenboro to Souris	46.0	
	Souris to Schwitzer	---	
	Schwitzer-Reston to Interprov. Bdy. near Antler	47.7	
	Kemnay to Interprov. Bdy. near Gainsboro	77.2	
# Leased			

<u>NAME OF ROAD</u>	<u>LOCATION</u>	<u>MILES OF LINE</u>
		Total
<u>CANADIAN PACIFIC - Cont'd.</u>		
<u>Manitoba - Cont'd.</u>		
Canadian Pacific	Lauder to Interprov. Bdy. near Council	32.2
	Reston to Interprov. Bdy. near Maryfield	22.2
#Manitoba & North Western	Portage La Prairie-Gladstone to Interprov. Bdy. near Harrowby	170.6
Canadian Pacific	Binscarth to Inglis	23.88
Western Railway -	Macgregor to Varco	55.51
#Saskatchewan & Western	Minnedosa to Gauthier	17.97
#Great North West Central Railway	Chater to Miniota	71.8
	Forrest to Lenore	41.5
Canadian Pacific	Virden to McAuley	36.3
	Kirkella-McAuley to Interprov. Bdy. near Jellwyn	21.8
	Total in Manitoba	1,735.26
<u>Saskatchewan</u>		
Canadian Pacific	X Interprov. Bdy. near Kir- kella-Wolseley-Regina- Moose Jaw-Swift Current to Interprov. Bdy. near Walsh	414.8
	X Interprov. Bdy. near Jellwyn -Bulyea-Lanigan-Saskatoon- to Interprov. Bdy. near Macklin	473.9
#Calgary & Edmonton	Rural to Interprov. Bdy. near Compeer	41.0
Canadian Pacific	Wilkie (Bush) to Cutknife	28.0
	Wilkie " to Kelfield	35.4
	Brass (Redford) to Rural, (Kerrobert)	36.1
	Interprov. Bdy. near Mary- field to Wolseley	100.2
	Regina to Colonsay	132.6
	Euston to Bulyea	18.8
	Moose Jaw to Macklin	267.2
	Curle to Assiniboia	64.4
	Java to Interprov. Bdy. near Empress	111.5
	Leader to Burstall	25.0
	Swift Current to Vanguard	44.6
	Interprov. Bdy. near Gains- boro to Estevan to Pasqua	216.6
	Estevan to North Portal	23.1
	Hooper to Neptune	54.0
	Antler-Stoughton-Regina	162.5
	Interprov. Bdy. near Council to Alida	22.5
	Stoughton to Weyburn	36.8
	Weyburn-Assiniboia-Interprov. Bdy. near Altawana	317.0
	Consul to Climax	61.24
#Manitoba & North Western	Interprov. Bdy. near Harrowby to Sheho	100.9
Canadian Pacific Ry.	Sheho to Lanigan	77.2
	Lanigan to Naicam	49.5
	Total in Saskatchewan	2,914.84

<u>NAME OF ROAD</u>	<u>LOCATION</u>	<u>MILES OF LINE</u>
		<u>Tot</u>
<u>CANADIAN PACIFIC - Cont'd.</u>		
<u>Alberta</u>		
Canadian Pacific	X Interprov. Bdy. near Walsh-Medicine Hat-Bassano- Gleichen-Strathmore-Calgary to Interprov. Bdy. near Stephen	336.49
	Interprov. Bdy. near Macklin to Rossyth	61.0
# Calgary & Edmonton	Rossyth to Wetaskiwin	100.0
	Interprov. Bdy. near Compeer to Lacombe	180.6
Canadian Pacific	Coronation to Lorraine	18.8
	Interprov. Bdy. near Empress to Bassano	118.3
	Bassano to Irricana	72.2
	Gleichen to Shepard	40.3
	Langdon-Acme-Kirkpatrick	76.44
	Kirkpatrick to Kneehill	2.75
	Suffield to Lomond	84.1
# Alberta Ry. & Coal Co.	Dunmore to Lethbridge	108.36
# " " & Irrig.Co.	Lethbridge to Coutts	64.61
	Stirling to Cardston	46.75
	Rayley to Wolford	7.97
Canadian Pacific	Interprov. Bdy. near Altawana to Manyberries to Stirling	119.10
	Lethbridge to Interprov. Bdy. near Crow's Nest	101.11
# Calgary & Edmonton	Kipp to Aldersyde	84.88
	Macleod to Calgary	105.2
	Calgary to Strathcona to Edmonton	193.0
# Alberta Central Ry.	Forth to Ullin	64.72
	Total in Alberta	1,986.68
<u>British Columbia</u>		
Canadian Pacific	Interprov. Bdy. near Stephen to Port Moody	507.60
	Port Moody to Vancouver	12.08
	Revelstoke to Arrowhead	28.12
# Shuswap & Okanagan Landing Ry.	Sicamus-Okanagan Landing	51.17
Canadian Pacific	Mission to Huntingdon	10.05
	New Westminster Jct. to New Westminster	8.56
	English Bay Jct. to English Bay	3.20
	Vancouver to Coal Harbour	1.20
	Port Moody to End of track	3.20
# Vancouver & Lulu Island	Greer's Beach, Vancouver to Steveston	14.15
	Eburne Jct. to New West- minster	9.65
# Kootenay Central	Golden to Colvalli	166.50
	Caithness to Waldo	10.84

<u>NAME OF ROAD</u>	<u>LOCATION</u>	<u>MILES OF LINE</u>
		Total
<u>CANADIAN PACIFIC - Cont'd.</u>		
<u>British Columbia - Cont'd.</u>		
# British Columbia Southern	Crow's Nest to Kootenay Landing	181.60
	North Star to Kimberley	19.17
	Yahk to Kingsgate	10.57
	Proctor to Nelson	20.47
# Columbia, Kootenay Ry. & Navigation Co.	Nelson to Columbia R. Bridge	25.02
	S. Slocan to Slocan City	31.38
# Columbia & Western	Columbia R. Bridge to Midway	101.80
	Castlegar to Rossland	30.60
	Tadouac to Trail	1.74
# Kootenay & Arrowhead Ry.	Lardeau to Gerrard	33.30
# Kaslo & Slocan	Kaslo to Retallack	17.70
# Nakusp & Slocan	Sandow to Nakusp	40.67
	Retallack to Three Forks	7.80
	Total in British Columbia	1,348.14
	TOTAL FOR CANADA	13,138.64

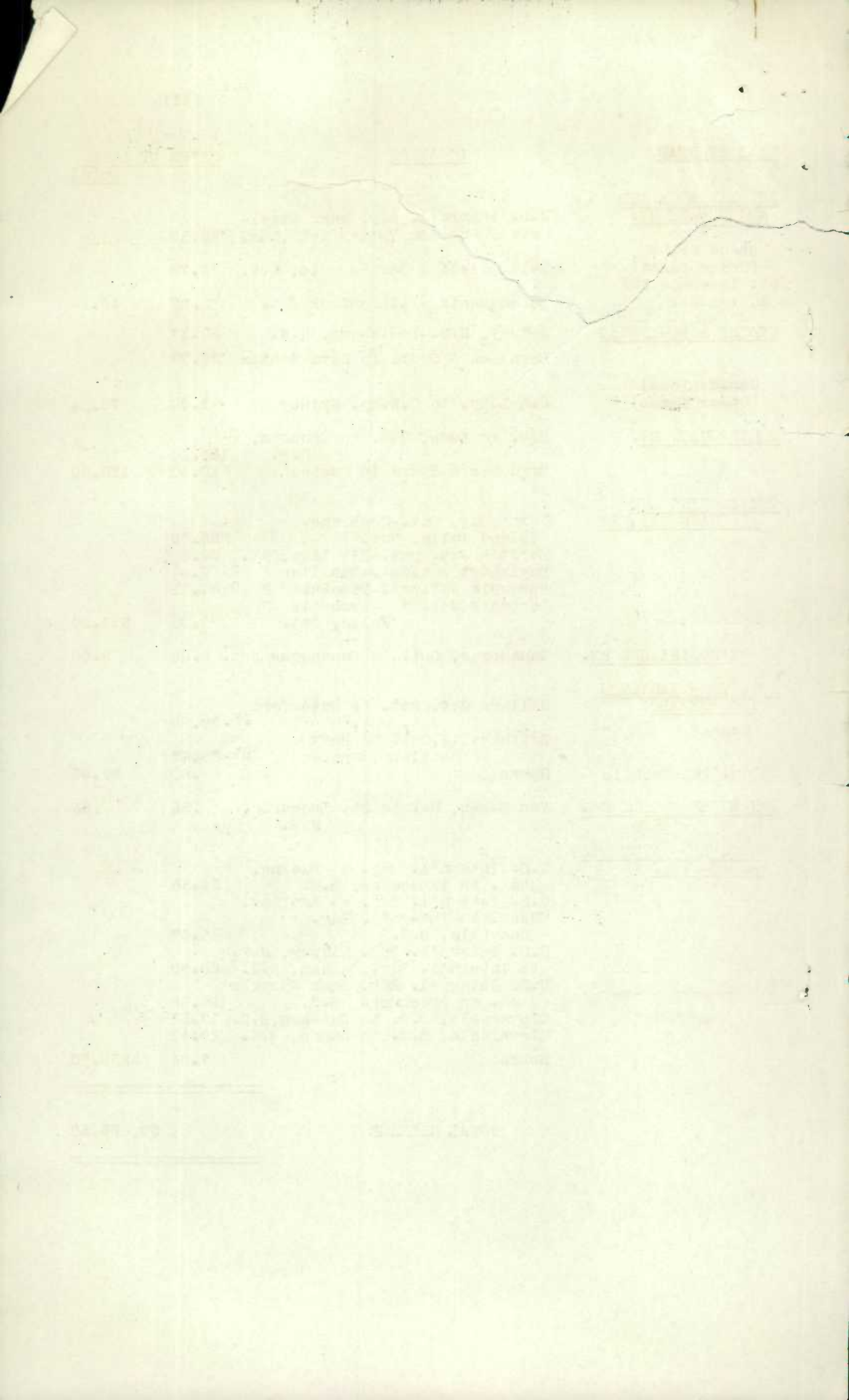
X Main Line.

<u>NAME OF ROAD</u>	<u>LOCATION</u>	<u>MILES OF LINE</u>	<u>TOTAL</u>
<u>CANADA SOUTHERN</u> (Main Line)	Windsor, Ont. to Niagara Falls, Ont.	226.18	
	Welland, Ont. to Bridgeburg, Ont.	17.56	
	St. Clair Jct. Ont. to Court- right, Ont.	62.29	
	Comber, Ont. to Leamington, Ont.	16.06	
	Amherstburg, Ont. to Essex "	16.94	
	Oil City, Ont. to Eddy's, Ont.	5.50	
	Petrolia Jct. Ont. to Petrolia	6.62	
	Victoria to Montrose Jct. Ont.)		
	Niagara Falls-Niagara-on-the Lake)	25.15	
	Spurs	4.65	380.55
<u>CENTRAL CANADA</u>	Winagami, Alta. to Berwyn, Alta.	72.12	72.12
<u>CENTRAL VERMONT</u>	U.S. Intern'l. Bdy. near St. Armand, Que. to St. Johns, Que.	25.53	25.53
<u>CROW'S NEST SOUTHERN</u>	U.S. Intern'l. Bdy. at Gateway, Mont. to Michel, Alta.	74.18	74.18
<u>CUMBERLAND RY. AND COAL CO.</u>	Springhill Jct. to Parrsboro, N.S.	32.00	32.00
<u>DETROIT RIVER TUNNEL CO.</u>	Detroit, Mich. to Windsor, Ont.	3.26	3.26
<u>DOMINION ATLANTIC</u>	Yarmouth, N.S.-Windsor-Truro	227.42	
	Kentville, N.S.-Kingsport, N.S.	14.02	
	Centreville, N.S.-Weston, N.S.	14.81	
	Spurs	.45	
Canadian National (Under Lease)	Windsor Jct. N.S.-Windsor, N.S.	81.66	288.36
<u>EASTERN BRITISH COLUMBIA</u>	McGillivray, B.C. to Corbin, B.C.	14.00	14.00
<u>EDMONTON-DUNVEGAN AND B.C. (Main line)</u>	Edmonton, Alta. to Spirit River, Alta.	357.00	
	Ryecroft, Alta. to Grand Prairie	49.8	
	Spurs	.28	407.08
<u>ESSEX TERMINAL</u>	Ford, Ont.-Walkerville-Windsor -Quarries, Ont.	19.00	
	Spurs	2.00	21.00
<u>ESQUIMALT & NANAIMO (Main Line)</u>	Victoria, B.C. to Courtney, B.C.	139.7	
	Parksville Jct. to Port Alberni, B.C.	39.0	
	Hayward Jct. B.C. to Lake Cowichan, B.C.	18.0	
	Osborne Jct. B.C. to Crofton, B.C.	2.5	199.2
<u>FREDERICTON AND GRAND LAKE COAL AND RAILWAY CO.</u>	Fredericton, N.B. to Minto, N.B.	31.1	31.1
<u>GREATER WINNIPEG WATER DISTRICT</u>	St. Boniface, Man. to Waugh, Man.	92.0	92.0
<u>HEREFORD</u> (Operated by Maine Central)	Beecher Falls, Vt. to Lime Ridge, Que.	52.85	
	Spurs	.21	53.06

NAME OF ROAD	LOCATION	MILES OF LINE	
			Total
<u>INVERNESS RAILWAY</u>			
<u>& COAL COMPANY</u>	Inverness Jct. N.S. to Inverness, N.S.	60.91	60.91
<u>INTERNATIONAL BRIDGE</u>			
<u>& TERMINAL CO.</u>	International Falls, Minn. to Fort Frances, Ont.	2.58	2.58
<u>KENT NORTHERN</u>			
	Richibucto, N.B. to Kent Jct. N.B.	27.00	
	Spurs	2.00	29.00
<u>KETTLE VALLEY</u>			
	Midway, B.C. - South Penticton, B.C. - Princeton, B.C.	204.86	
	Princeton, B.C. - Brookmere, B.C. (Trackage rights over Vancouver, Victoria & Eastern)		
"	Brookmere, B.C. - Petain, B.C.	56.86	
"	Brodie, B.C. - Merritt, B.C.	24.60	
"	Okanagan Falls, B.C. to end of steel	16.60	
"	So. Penticton, B.C. - Skaha, B.C.	2.40	
"	Carson, B.C. - Archibald, B.C.	23.89	
Canadian Pacific (Under Lease)	Nicola, B.C. to Spence's Bridge, BC.	47.17	376.38
<u>LAKE ERIE & DETROIT</u>			
<u>RIVER RY. COMPANY</u>	(See Pere Marquette)		
<u>LACOMBE & NORTH</u>			
<u>WESTERN</u>	Lacombe, Alta. to Hoadley, Alta.	49.39	49.39
<u>MAINE CENTRAL</u>			
	U.S. Intern'l. Bdy. at Barings, Me. to U.S. Intern'l. Bdy. Woodlawn, Me.	5.10	5.10
<u>MARITIME COAL RY.</u>			
<u>AND POWER CO.</u>	Joggins, N.S. to Maccan, N.S.	12.20	
	Branches and Spurs	4.27	16.47
<u>MASSAWIPPI VALLEY</u>			
(Operated under lease by Boston & Maine Ry.)	U.S. Intern'l. Bdy. near Beebe Jct. Que. to Lennoxville, Que.	31.96	
	Branches	3.52	35.48
<u>MONTREAL & ATLANTIC</u>			
	Farnham, Que. to U.S. Intern'l. Bdy. near Richford	43.3	
	Drummondville, Que. to Enlaurga, Que.	59.2	
Newport & Richford (Under Lease)	U.S. Intern'l. Bdy. at Elkhurst Vt. to Newport, Vt.	21.5	
Lake Champlain & St. Lawrence Jct. (Under lease)	Stanbridge, Que. to St. Guillaume, Que.	60.6	184.6
<u>MANITOBA GREAT NORTHERN</u>			
	U.S. Intern'l. Bdy. at Gretna, Man. to Portage La Prairie, Man.	76.67	
	U.S. Intern'l. Bdy. near Haskett, Man. to Morden, Man.	15.25	91.92

<u>NAME OF ROAD</u>	<u>LOCATION</u>	<u>MILES OF LINE</u>	
			<u>Total</u>
<u>MIDLAND RAILWAY</u> <u>OF MANITOBA</u>	Freight Terminals in Winnipeg	6.40	6.40
<u>MORRISSEY - FERNIE</u> <u>AND MICHEL</u>	Swinton Jct. B.C. to Carbonada, Wash.	4.70	
	C. U. S. Ry. Jct. B.C. to Coal Creek, B.C.	6.15	10.85
<u>NAPIERVILLE JCT.</u>	Intern'l. Bdy. to Delson Jct. Que.	27.15	
	Spurs	1.30	28.45
<u>NELSON & FORT SHEPPARD</u>	U.S. Intern'l. Bdy. at Waneta, Wash. to Troupe Jct. B.C.	54.84	54.84
<u>NEW BRUNSWICK COAL</u> <u>AND RAILWAY CO.</u>	Hinto, N.B. to Norton, N.B.	59.2	59.2
<u>NEW WESTMINSTER</u> <u>SOUTHERN</u>	Spurs at Cloverdale, B.C.	2.60	
	" " Brownsville, B.C.	1.12	3.72
<u>OTTAWA & NEW YORK</u>	U.S. Intern'l. Bdy. at Uscau, Ont. to Ottawa, Ont.	56.81	56.81
<u>PACIFIC GREAT EASTERN</u>	Squamish, B.C. to Quesnel, B.C.	348.50	
	No. Vancouver, to Whytecliff BC.	12.70	361.20
<u>PERE MARQUETTE</u> (Lake Erie and Detroit Ry.)	Walkerville, Ont. to St. Thomas, Sarnia, Ont. to Ericau, Ont.	126.86 72.18	199.04
<u>QUEBEC CENTRAL</u>	Sherbrooke Jct. Que. to Diamond Jct. Que.	129.63	
	Valley Jct. Que. to Lake Fron- tier, Que.	79.14	
	Truro Jct. Que. to Megantic, Que.	59.27	
	Scotts, Que. to Harlake, Que.	27.49	295.53
<u>QUEBEC, MONTREAL</u> <u>AND SOUTHERN</u>	St. Lambert, Que. to Fortierville Que.	109.69	
	Bellevue Jct. Que. to Noyan Jct. Que.	81.09	190.78
<u>QUEBEC ORIENTAL</u>	Matapedia, Que. to New Carlisle, Que.	99.25	99.25
<u>QUEBEC RAILWAY, LIGHT</u> <u>AND POWER CO.</u> (Montmorency Div.)	Quebec to St. Joachim, Que.	24.60	
	Beauport, Que. to Kent House, Que.	3.50	
	Spurs	.50	28.60
<u>ROBERVILLE - SAGUENAY</u>	Port Alfred, Que. to HaHa Bay Jct. Que.	19.2	
	Laterriere Jct. Que. to Kenogami, Que.	12.2	
	LaBrosso Jct. Que. to Chicoutimi	3.4	
	Port Alfred, Que. to Bagotville Que.	.8	
	" " " to Alexis, Que.	1.4	37.0
<u>RIVIERE & NOYAN</u>	Vermont State Line to Noyan Jct. Que.	3.36	3.36

<u>NAME OF ROAD</u>	<u>LOCATION</u>	<u>MILES OF LINE</u>	
			<u>Total</u>
<u>ST. LAWRENCE AND ADIRONDACK RY.</u>	U.S. Intern'l. Bdy. near Athel- stan, Ont. to Valleyfield, Que.	20.17	
Grand Trunk (Under Lease)	Valleyfield - Beauharnois, Que.	12.70	
St. Lawrence and Adirondack	Beauharnois - Adirondack Jct.	13.27	46.14
<u>SYDNEY & LOUISBURG</u>	Sydney, N.S.-Louisburg, N.S.	39.17	
	Branches & Spurs in Nova Scotia	38.77	
Can. National (Under Lease)	S. & L. Ry. to C.N. Ry. Sydney	1.20	79.14
<u>TEMISCOUATA RY.</u>	Riv. du Loup, Que. to Connors, N.B.	133.00	
	Branches & Spurs in Quebec	10.60	123.60
<u>TEMISKAMING AND NORTHERN ONTARIO</u>	North Bay, Ont.-Cochrane- Island Falls, Ont.	295.29	
	Earlton Jct. Ont.-Elk Lake, Ont.	28.5	
	Englehart Jct. Ont.-Charlton "	7.6	
	Porquois Jct. Ont.-Timmins "	33.11	
	Porquois Jct. " -Iroquois " Falls, Ont.	7.00	371.50
<u>THOUSAND ISLANDS RY.</u>	Gananoque, Ont. to Gananoque Jct.	6.08	6.08
<u>TORONTO - HAMILTON AND BUFFALO</u>	Welland Jct. Ont. to Waterford Jct. Ont.	79.88	
	Smithsville, Ont. to Port Maitland, Ont.	19.47	
	Spurs	.60	99.95
<u>VAN BUREN BRIDGE CO.</u>	Van Buren, Me. to St. Leonards, N.B.	.36	.36
<u>VANCOUVER - VICTORIA AND EASTERN</u>	U.S. Intern'l. Bdy. at Blaine, Wash. to Vancouver, B.C.	34.35	
	U.S. Intern'l. Bdy. at Laurier, Wash. to Intern'l. Bdy. Danville, B.C.	16.47	
	U.S. Intern'l. Bdy. Midway, B.C. to Intern'l. Bdy. Molson, B.C.	28.89	
	U.S. Intern'l. Bdy. near Chopoka Wash. to Brookmere, B.C.	96.68	
	Cloverdale, B.C. to Guichon, B.C.	17.31	
	Cloverdale, B.C. to Sumas, B.C.	29.41	
	Spurs	7.64	230.75
TOTAL MILEAGE			39,656.58



MILEAGE OPENED FOR OPERATION DURING 1923

<u>NAME OF ROAD</u>	<u>LOCATION</u>	<u>Increase</u>	<u>Decrease</u>
		<u>Miles</u>	
<u>ALBERTA & GREAT</u> <u>WATERWAYS</u>	Lac La Biche, Alta. to Waterways, Alta.	168.8	
<u>CANADIAN NATIONAL</u> <u>RAILWAYS</u>	Near Point Tupper, N.S.	.51	
	At Napanee, Ont.	.78	
	At Conmee, Ont.	3.05	
	Near Ripissing Jct. Ont.	.56	
	Craik Jct. Sask. to Ardmore, Sask.	3.71	
	Ansell, Alta. to Rikerdike, Alta.	3.9	
	Battle, Alta. to Duhamel, Alta.	3.48	
	Milne's Landing, B.C. to Cowichan Lake, B.C.	42.8	
	Long Lac, Ont. to Nakina, Ont.	29.5	
<u>CANADIAN PACIFIC</u>			
Interprovincial & James Bay	Opemicon, Que. to Angliers, Q. Gaboury, Que. to Ville Marie Que.	59.1	
		7.6	
Leader S.E. Branch	Leader, Sask. to Burstall, Sask.	25.3	
Consul " " "	Hotaken, " to Clinax, Sask.	61.2	
Canadian Pacific	Decrease due to line aban- doned or straightened		48.2
<u>KUTTLE VALLEY</u>	South Penticton to Skaha Okanagan Falls, B.C. to end of steel	2.4	
		16.6	
<u>LACOMBE AND NORTH</u> <u>WESTERN</u>	Lacombe, Alta. to Hoadley, Alta.	49.39	
<u>PEMISKAMING AND</u> <u>NORTH. ONTARIO</u>	Cochrane, Ont. to Island Falls, Ont.	45.00	

STATISTICS CANADA LIBRARY
BIBLIOTHÈQUE STATISTIQUE CANADA



1010701202