

Historical File Copy

5.971

6e1

1927

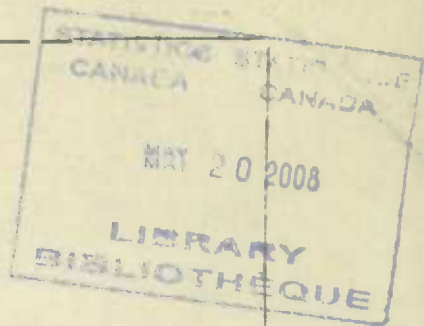
57-D-20
0.7

CANADA

DEPARTMENT OF TRADE AND COMMERCE

Canada DOMINION BUREAU OF STATISTICS

TRANSPORTATION BRANCH



LOCATION AND MILEAGE

of

RAILWAYS OF CANADA

1927



Published by authority of the Hon. James Malcolm, M. P.,
Minister of Trade and Commerce.

♦ ♦ ♦

OTTAWA

1928

CANCELLED

Date _____

2.101
6/17
MSD

1940

DEPARTMENT OF TRADE AND COMMERCE

COMMISSION OF ENQUIRY

REPORT

FOR A TRADE PROTECTION

COMMISSION OF ENQUIRY

1940

(17 June '40 - Subs)

DEPARTMENT OF TRADE AND COMMERCE
DOMINION BUREAU OF STATISTICS
TRANSPORTATION BRANCH
OTTAWA

Dominion Statistician, R.H. Coats, B.A., F.S.S., (Hon.), F.R.S.C.
Chief, Transportation Branch, G.S. Wrong, B.Sc.

CHANGES IN SINGLE TRACK MILEAGE

OPERATED BY

STEAM RAILWAYS IN CANADA

1 9 2 7

The Bureau issued a report in 1925 showing the location and mileage of all the steam railways in Canada as at January 1st, 1924, and, in 1927, a supplementary report showing the additions and reductions during 1924, 1925 and 1926. The present report further supplements the original report by including all changes in single track during 1927.

Single track here is route miles, or mileage between terminals, and does not include sidings, industrial spurs, etc., but only main line and branch lines. The latter are defined for classification purposes as lines serving one or more stations beyond the point of junction with the main line or other branch lines and to and from which stations train service or its equivalent is performed.

300
1/11/28/GA

THE UNIVERSITY OF CHICAGO
LIBRARY

THE UNIVERSITY OF CHICAGO
LIBRARY

THE UNIVERSITY OF CHICAGO
LIBRARY

THE UNIVERSITY OF CHICAGO
LIBRARY

THE UNIVERSITY OF CHICAGO
LIBRARY

THE UNIVERSITY OF CHICAGO
LIBRARY

THE UNIVERSITY OF CHICAGO
LIBRARY

THE UNIVERSITY OF CHICAGO
LIBRARY

THE UNIVERSITY OF CHICAGO
LIBRARY

THE UNIVERSITY OF CHICAGO
LIBRARY

THE UNIVERSITY OF CHICAGO
LIBRARY

THE UNIVERSITY OF CHICAGO
LIBRARY

THE UNIVERSITY OF CHICAGO
LIBRARY

THE UNIVERSITY OF CHICAGO
LIBRARY

THE UNIVERSITY OF CHICAGO
LIBRARY

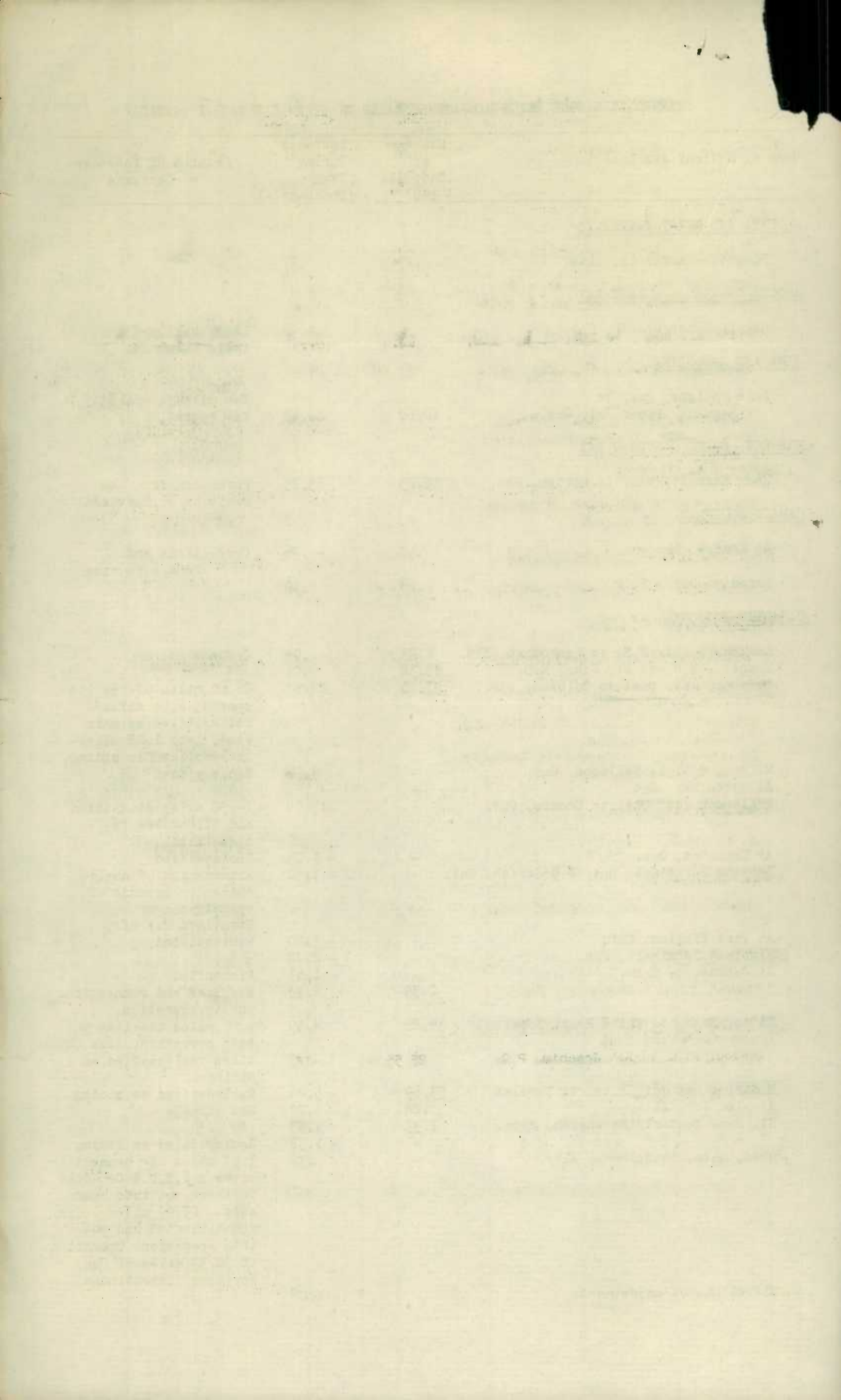
THE UNIVERSITY OF CHICAGO
LIBRARY

2

CHANGES IN SINGLE TRACK MILEAGE OPERATED BY STEAM RAILWAYS IN CANADA

1927

Name of Railway and Location	Mileage at Dec. 31, 1927	Increase During Year (Decrease -)	Details of Increase or Decrease
<u>ALBERTA AND GREAT WATERWAYS</u>			
Edmonton Terminals, Alta.	.23	.23	
<u>ALGOMA CENTRAL & HUDSON BAY</u>			
Magpie Mines Branch, Ont.	-	-9.42	Line abandoned and rails taken up.
<u>ALMA AND JONQUIERE</u>			
Isle Maligne, Que. to Saguenay Power Jct. Que.	10.60	10.60	New mileage opened for operation.
<u>BRANDON, SASK. & HUDSON BAY</u>			
Near Haskett, Man. to Morden, Man.	15.25	15.25	Purchased from the Manitoba Gr. Northern.
<u>CANADA SOUTHERN</u>			
At London, Ont.	.50	- .56	Corrections and remeasurements
Paradise Grove Spur	.26	.10	" "
<u>CANADIAN NATIONAL</u>			
Lockeport Jct. N.S. to Lockeport, N.S.	4.23	.04	Correction
Moncton, N.B. to St. John, N.B.	89.32	.01	"
Chambord Jct. Que. to Dolbeau, Que.	57.40	27.88	26.60 miles of new line opened; 2.55 miles reclassified as main line, less 1.27 miles reclassified as siding.
Milnet, Ont. to Sellwood, Ont.	-	-4.20	Reclassified
At North Bay, Ont.	-	- .22	"
Millbrook Jct. Ont. to Omamee, Ont.	-	-15.64	14.50 miles dismantled and 1.14 miles reclassified.
At Hamilton, Ont.	-	- 1.05	Reclassified
Between Paris Jct. Ont. & Goderich, Ont.	-	- 1.32	Elimination of duplication on account of operation over Stratford Cut off.
At Fort William, Ont.	-	- 3.20	Reclassified
Winnipeg Terminals, Man.	-	- 2.72	"
At Saskatoon, Sask.	-	- 1.63	Dismantled
" " " "	2.39	2.39	New line and connections put in operation.
Eston, Sask. to White Bear, Sask.	34.29	4.59	5.05 miles new line put into operation, less .46 miles reclassified as siding.
Medicine Hat Jct. Alta. to Wardlaw	53.69	- 5.06	Reclassified as siding
At Alix Jct. Alta.	.28	.28	New mileage
St. Paul Easterly Extension, Alta.	1.33	1.33	" "
" " " " "	-	- 1.52	Reclassified as siding.
Obed, Alta. to Solomon, Alta.	-	- .39	3.97 miles new connection between G.T.P. & Canadian Northern put into operation. 25.97 miles G.T.P. rehabilitated and put into operation. Operation of 30.33 miles of Can. Northern discontinued.
Miscellaneous adjustments	-	- 1.06	



CHANGES IN SINGLE TRACK MILEAGE OPERATED BY STEAM RAILWAYS IN CANADA

Name of Railway and Location	Mileage at Dec. 31, 1927	Increase During Year (Decrease -)	Details of Increase or Decrease
<u>CANADIAN PACIFIC</u>			
Cookshire, Que. to Malvina, Que.	22.5	22.5	New mileage put in operation.
Ardwick, Sask. to Coronach, Sask.	59.9	59.9	" " " "
Wilkie, Sask. to Clandonald, Sask.	145.8	40.8	" " " "
Southall, Sask. to Lake Alma, Sask.	26.3	26.3	Lloydminster to Clandonald. New mileage put in operation.
Sterling, Alta. to Glenwood, Alta.	74.95	28.2	New mileage put in operation, Cardston to Glenwood.
Gaithness, B.C. to End of Track	-	-11.40	Line abandoned.
Re-alignment of Company's mileage	-	-.10	Increase 1.5 miles, Decrease 1.6 miles.
<u>CROW'S NEST SOUTHERN</u>			
International Boundary at Gateway, Montana to Elko, B.C.	33.77	.02	New mileage
<u>CUMBERLAND RAILWAY & COAL COMPANY</u>			
Springhill Jct. N.S. to Parrsboro, N.S.	31.29	-.71	
<u>EASTERN BRITISH COLUMBIA</u>			
McGillivray, B.C. to Corbin, B.C.	13.04	-.96	Re-measurement
<u>MANITOBA GREAT NORTHERN</u>			
International Boundary at Neche, N.D. to West Gretna, Man.	-	-.53	Line sold to Brandon, Sask. & Hudson Bay Ry.
International Boundary near Haskett, Man. to Morden, Man.	-	-15.28	Line sold to Brandon, Sask. & Hudson Bay Ry.
<u>NAPIERVILLE JUNCTION</u>			
At Delson Jct. Que.	1.28	-.02	Re-measurement
<u>NIPISSING CENTRAL</u>			
Swastika Jct. Ont. to Rouyn, Que.	58.60	26.40	New mileage put into operation from Cheminis, Ont. at Interprovincial Boundary to Rouyn, Que.
<u>PEMBINA VALLEY</u>			
Busby, Alta. to Barrhead, Alta.	26.51	26.51	Opened for operation October 18, 1927.
<u>QUEBEC RAILWAY, LIGHT AND POWER COMPANY (Montmorency Division)</u>			
Quebec, P.Q. to St. Joachim, P.Q.	25.55	.18	
<u>ROBERVAL-SAGUENAY</u>			
Ha Ha Bay Jct. Que. to Shipshaw, Que.	4.82	4.82	New mileage opened for operation.
<u>SYDNEY AND LOUISBURG</u>			
Branches and Spurs in Nova Scotia	36.60	- 1.21	

STATISTICS CANADA LIBRARY
BIBLIOTHÈQUE STATISTIQUE CANADA



1010701207

