

54 001

C1

PROPERTY OF THE LIBRARY

Rec'd. JAN 5 1929

DOMINION BUREAU OF STATISTICS

R

CANADA  
DEPARTMENT OF TRADE AND COMMERCE  
DOMINION BUREAU OF STATISTICS  
TRANSPORTATION BRANCH

His. orig. File Copy

SUMMARY REPORT  
CANAL STATISTICS

For  
DECEMBER  
and  
SEASON OF NAVIGATION  
1928

-----+ + +-----

Published by Authority of the Hon. James Malcolm, M.P.,  
Minister of Trade and Commerce

+ + +

OTTAWA

1929

1800  
1800  
1800  
1800

DEPARTMENT OF TRADE AND COMMERCE  
DOMINION BUREAU OF STATISTICS  
TRANSPORTATION BRANCH  
OTTAWA

Dominion Statistician, R.H. Coats, B.A., F.S.S., (Hon.), F.R.S.C.  
Chief, Transportation Branch, G.S. Wrong, B.Sc.

SUMMARY OF CANAL STATISTICS

FOR

DECEMBER

AND

SEASON OF NAVIGATION

1928

Sault Ste. Marie Canals:

Canadian and United States Locks:

Although the canals opened almost three weeks later than in 1927 and closed two days earlier, the total traffic was heavier by 3,640,084 tons and this tonnage has been exceeded only thrice, viz. in 1916, 1917 and 1923. The large increases were 3,223,484 tons of iron ore, 76,020,730 bushels, or 253,400 tons, of wheat, and 12,057,806 bushels of other grains. Bituminous coal was lighter by 1,906,343 tons and anthracite coal by 372,866 tons.

Welland Canal:

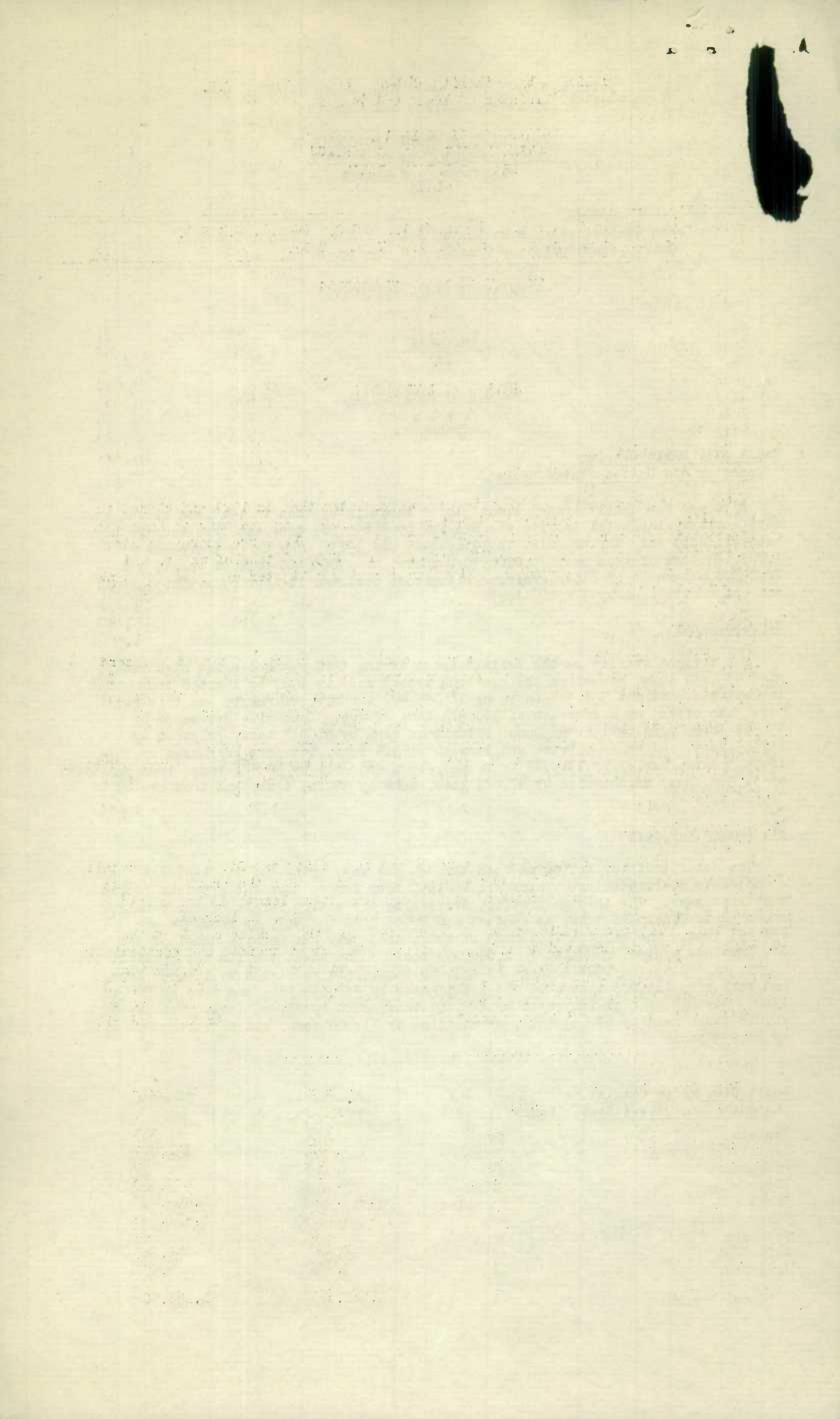
The freight traffic on the Welland canal during 1928 reached a new high record of 7,439,617 tons, exceeding the previous record made in 1927 by 192,158 tons. The largest increase was 332,564 tons, or 11,085,460 bushels, of wheat, but this was more than offset by a decrease of 376,918 tons of rye. Corn also decreased by 45,358 tons, sand by 158,398 tons, bituminous coal by 91,334 tons, pulpwood by 25,353 tons, and cement, brick and lime by 21,314 tons, but oats increased by 186,383 tons, barley by 131,737 tons, petroleum and oils by 38,842 tons, iron and steel by 34,588 tons, merchandise by 47,628 tons, coke by 59,223 tons, and iron ore by 24,568 tons.

St. Lawrence Canals:

The total traffic, including both through and way, using the St. Lawrence canals amounted to 8,411,542 tons, which was 1,498,590 tons larger than the previous record made last year. The through traffic, traversing the entire length of the canals, amounted to 7,321,348 tons as against 6,862,655 tons in 1927, an increase of 458,693 tons. The way traffic, much of which used only the Lachine canal of the St. Lawrence system, amounted to 1,090,194 tons. The wheat traffic was particularly heavy, exceeding the 1927 tonnage by 253,000 tons, oats increased by 174,559 tons and barley by 123,083 tons, but rye was lighter by 386,599 tons and corn by 50,712 tons. Bituminous coal increased by 242,207 tons, coke by 23,465 tons, iron ore by 20,088 tons, sand by 67,663 tons, merchandise by 33,705 tons, and petroleum and oils by 28,993 tons.

Sault Ste. Marie Canals:

<u>Canadian and United States Locks:</u>		<u>December</u>	<u>December</u>
		<u>1928</u>	<u>1927</u>
Vessels	No.	363	313
Registered Tonnage	Tons	927,742	852,809
Passengers	No.	32	90
Flour	Ebbs.	371,630	577,990
Wheat	Bushels	30,204,494	28,453,257
Other Grains	"	7,741,625	6,407,759
Iron Ore	Tons	100	--
Soft Coal	"	95,200	48,783
Hard Coal	"	9,775	6,500
Total Freight	"	1,261,667	1,168,906



Gault Ste. Marie Canal:  
Canadian Lock:

		December 1928	December 1927
Vessels	No.	113	95
Registered Tonnage	Tons	97,101	117,332
Passengers	No.	32	90
Barley	Tons	7,334	1,440
Oats	"	9,829	2,252
Wheat	"	18,531	16,883
Flour	"	16,133	22,215
Total Freight	"	75,425	70,717

Welland Canal:

Vessels	No.	83	51
Registered Tonnage	Tons	87,610	48,788
Barley	"	-	-
Corn	"	6,596	5,040
Oats	"	8,076	5,544
Wheat	"	56,824	8,766
Soft Coal	"	10,859	17,496
Total Freight	"	109,793	53,883

St. Lawrence Canals:

Vessels	No.	97	86
Registered Tonnage	Tons	85,009	64,951
Passengers	No.	-	-
Barley	Tons	1,481	-
Corn	"	8,656	5,786
Oats	"	-	13,438
Wheat	"	48,034	23,842
Petroleum and oils	"	-	1,600
Hard Coal	"	-	-
Soft Coal	"	6,072	-
Total Freight	"	84,838	53,793

St. Peters Canal:

Vessels	No.	41	80
Registered Tonnage	Tons	2,613	5,769
Passengers	No.	-	-
Total Freight	Tons	1,200	3,983

Chambly Canal:

Vessels	No.	-	3
Registered Tonnage	Tons	-	103
Passengers	No.	-	-
Total Freight	Tons	-	-

Trent Canal:

Vessels	No.	-	2
Registered Tonnage	Tons	-	20
Passengers	No.	-	-
Total Freight	Tons	-	60

Murray Canal:

Vessels	No.	3	2
Registered Tonnage	Tons	617	140
Passengers	No.	-	-
Total Freight	Tons	-	2

Other canals closed.

December  
1952

100,000  
150,000  
200,000  
250,000  
300,000  
350,000  
400,000  
450,000  
500,000

December  
1952

100,000  
150,000  
200,000  
250,000  
300,000  
350,000  
400,000  
450,000  
500,000

January  
1953

100,000  
150,000  
200,000  
250,000  
300,000  
350,000  
400,000  
450,000  
500,000



SUMMARY OF CANAL STATISTICS  
FOR SEASON OF NAVIGATION, 1928

		Season of Navigation	
		1928	1927
<u>Sault Ste. Marie Canal:</u>			
<u>Canadian &amp; United States Locks:</u>			
Vessels	No.	19,286	13,759
Registered Tonnage	Tons	66,833,136	64,327,325
Passengers	No.	56,064	55,107
Flour	Bbls.	9,283,583	9,383,441
Wheat	Bushels	406,760,720	330,739,990
Other Grains	"	131,039,529	118,981,723
Iron Ore	Tons	53,321,552	50,098,064
Soft Coal	"	14,047,616	15,953,959
Hard Coal	"	781,289	1,154,155
Total Freight	"	86,993,124	83,353,040
<u>Sault Ste. Marie Canal:</u>			
<u>Canadian Lock:</u>			
Vessels	No.	3,358	3,239
Registered Tonnage	Tons	4,586,489	4,484,724
Passengers	No.	34,289	34,483
Barley	Tons	107,462	91,320
Oats	"	165,420	45,677
Wheat	"	521,767	313,082
Flour	"	441,858	412,303
Total Freight	"	2,008,007	1,470,077
<u>Welland Canal:</u>			
Vessels	No.	6,587	7,654
Registered Tonnage	Tons	6,649,957	6,850,597
Barley	"	601,938	477,151
Corn	"	56,551	101,909
Oats	"	327,701	142,316
Rye	"	316,574	691,697
Wheat	"	3,947,173	3,611,406
Pulpwood	"	328,740	354,093
Soft Coal	"	475,266	506,600
Sand	"	263,949	422,347
Total Freight	"	7,439,617	7,247,459
<u>St. Lawrence Canals:</u>			
Vessels	No.	14,410	14,970
Registered Tonnage	Tons	8,338,803	8,330,894
Passengers	No.	85,926	87,567
Corn	Tons	62,804	113,516
Oats	"	299,889	125,330
Rye	"	294,462	681,041
Wheat	"	3,836,921	3,583,921
Petroleum & Oils	"	200,064	171,071
Pulpwood	"	679,499	746,762
Hard Coal	"	34,450	30,362
Soft Coal	"	856,088	613,881
Sand	"	543,169	475,506
Total Freight	"	8,411,542	7,912,954
<u>Ottawa Canal:</u>			
Vessels	No.	3,872	3,210
Registered Tonnage	Tons	629,201	576,195
Passengers	No.	24,116	27,565
Total Freight	Tons	437,786	459,759
<u>Rideau Canal:</u>			
Vessels	No.	955	1,169
Registered Tonnage	Tons	79,053	85,606
Passengers	No.	1,441	3,405
Total Freight	Tons	51,999	57,951

STATE OF TEXAS

COUNTY OF [illegible]

[illegible]

[illegible]

[illegible]

[illegible]

[illegible]

[illegible]



SUMMARY OF CANAL STATISTICS  
FOR SEASON OF NAVIGATION, 1928.

		Season of Navigation	
		1928	1927
<u>Chambly Canal:</u>			
Vessels	No.	1,164	1,411
Registered Tonnage	Tons	146,662	174,772
Passengers	No.	446	609
Total Freight	Tons	179,868	204,536
<u>Trent Canal:</u>			
Vessels	No.	2,478	2,656
Registered Tonnage	Tons	82,387	84,453
Passengers	No.	39,291	47,954
Total Freight	Tons	36,311	27,754
<u>Murray Canal:</u>			
Vessels	No.	376	581
Registered Tonnage	Tons	47,363	115,617
Passengers	No.	2,325	8,339
Total Freight	Tons	1,385	712
<u>St. Peter's Canal:</u>			
Vessels	No.	948	922
Registered Tonnage	Tons	69,173	64,185
Passengers	No.	<del>174</del>	302
Total Freight	Tons	51,260	46,306
<u>St. Andrew's Canal:</u>			
Vessels	No.	364	350
Registered Tonnage	Tons	74,259	70,019
Passengers	No.	138	262
Total Freight	Tons	51,948	64,331

.....  
TRAFFIC ON CANADIAN CANALS, 1928

Canal	Freight Tonnage	Compared with 1927	
		Increase	Decrease
Sault Ste. Marie	2,008,007	537,456	
Welland	7,439,617	192,158	
St. Lawrence	8,411,542	498,590	
Chambly	179,868	•	24,668
St. Peter's	51,260	4,954	
Murray	1,385	673	
Ottawa	487,786	32,027	
Rideau	51,999		5,952
Trent	36,311	8,557	
St. Andrew's	51,948		12,383
<b>TOTAL</b>	<b>18,719,723</b>	<b>1,231,412</b>	



1010702232

*[Faint, illegible text, likely bleed-through from the reverse side of the page]*

FINANCIAL STATEMENTS

Item	Amount	Percentage	Notes
101	100,000.0	100.0%	
102	100,000.0	100.0%	
103	100,000.0	100.0%	
104	100,000.0	100.0%	
105	100,000.0	100.0%	
106	100,000.0	100.0%	
107	100,000.0	100.0%	
108	100,000.0	100.0%	
109	100,000.0	100.0%	
110	100,000.0	100.0%	