

DEPARTMENT OF TRADE AND COMMERCE  
DOMINION BUREAU OF STATISTICS  
TRANSPORTATION BRANCH  
OTTAWA

PROPERTY OF THE  
DEC 1929  
R  
DOMINION BUREAU OF STATISTICS

Dominion Statistician, R.H. Coats, B.A., F.S.S., (Hon.), F.R.S.C.  
Chief, Transportation Branch, G.S. Wrong, B.Sc.

SUMMARY OF CANAL STATISTICS

FOR

NOVEMBER, 1929

Sault Ste. Marie Canals:

Canadian & United States Locks:

Total freight traffic through the locks at Sault Ste. Marie was only 6,952,390 tons as against 10,458,102 tons in November 1928. Iron ore decreased by 570,530 tons, wheat by 2,192,437 tons, or 73,081,223 bushels, and other grains decreased by 23,118,489 bushels.

Welland Canal:

The wheat shipments through the Welland Canal were less than a fifth of the shipments during November 1928, amounting to only 114,309 tons as against 613,997 tons last year. Other grains also showed large decreases, the total traffic being lighter by 560,333 tons.

To the end of November the 1929 traffic amounted to 4,722,263 tons as against 7,329,824 tons in 1928. This was a decrease of 2,607,561 tons, or over 35 per cent. The decrease in wheat alone accounted for 2,222,012 tons of the total.

St. Lawrence Canals:

Total traffic was lighter than in November 1928 by 559,217 tons, or over 50 per cent, wheat accounting for 501,076 tons of the decrease. Only 3,299,230 bushels of wheat passed down the canals as against 20,001,760 in November 1928. Barley declined from 65,711 tons last year to 26,601 tons and oats from 50,855 tons to 6,357 tons.

From the opening of navigation in April to the end of November, the total traffic amounted to 5,694,709 tons in 1929 and 8,326,704 tons in 1928, which was a decrease for this year of 2,631,995 tons.

Sault Ste. Marie Canals:

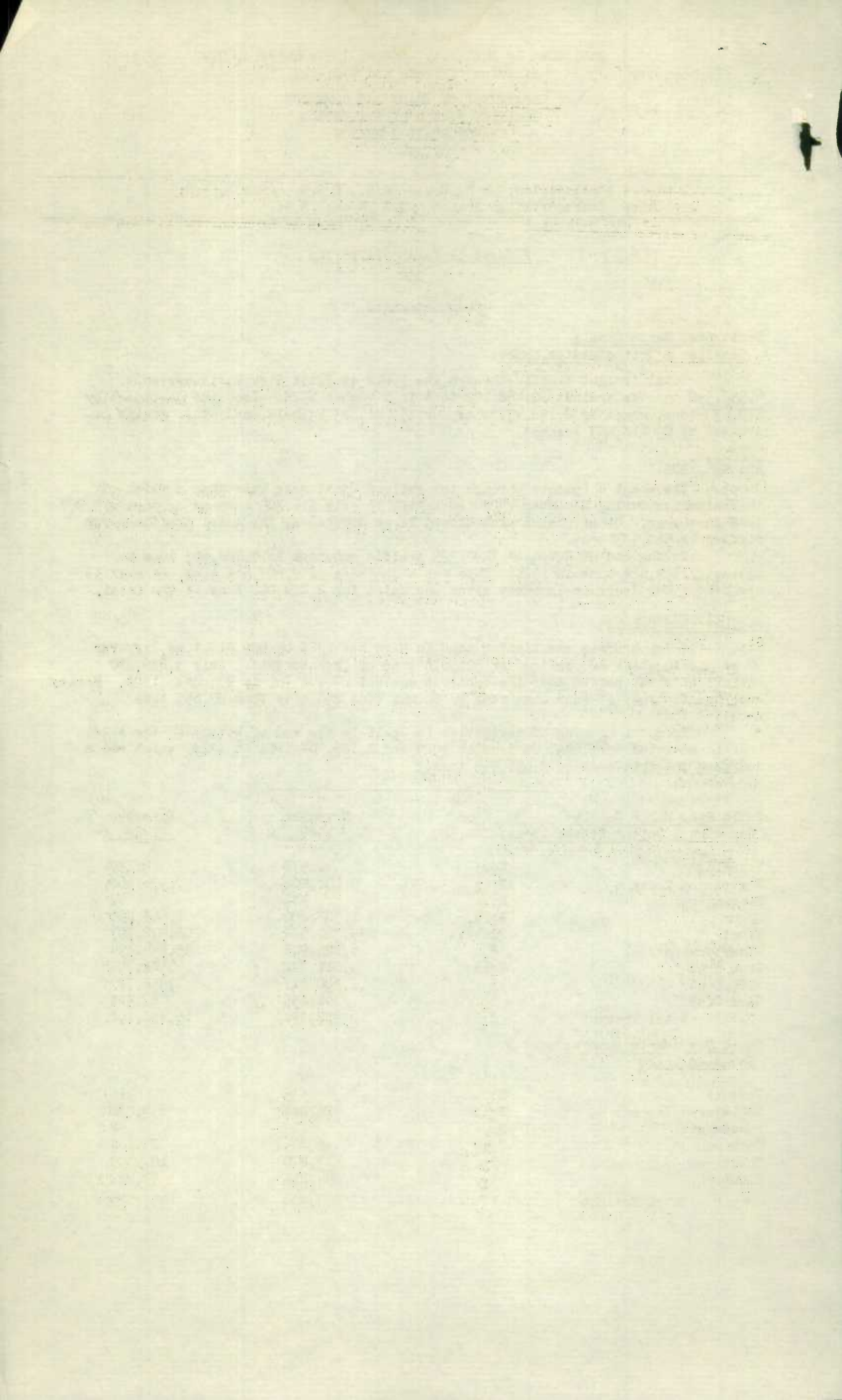
Canadian & United States Locks:

		November 1929	November 1928
Vessels	No.	1,572	2,239
Registered Tonnage	Tons	5,101,802	7,976,668
Passengers	No.	132	49
Flour	Bbls.	1,307,200	1,663,890
Wheat	Bushels	35,391,574	108,472,797
Other Grains	"	6,125,905	29,244,394
Iron ores	Tons	4,011,222	4,581,752
Soft Coal	"	1,320,417	1,458,727
Hard Coal	"	41,855	87,918
Total Freight	"	6,952,390	10,458,102

Sault Ste. Marie Canals:

Canadian Lock:

		1929	1928
Vessels	No.	335	416
Registered Tonnage	Tons	421,284	639,930
Passengers	No.	127	42
Oats	Tons	8,726	24,868
Wheat	"	43,872	107,705
Flour	"	54,213	73,282
Total Freight	"	204,900	357,229





		November 1929	November 1928
<u>Welland Canal:</u>			
Vessels	No.	420	816
Registered Tonnage	Tons	419,209	932,182
Barley	"	25,386	55,472
Oats	"	16,875	55,298
Rye	"	1,403	20,182
Wheat	"	114,309	613,997
Iron and Steel	"	42,934	65,670
Soft Coal	"	94,599	46,593
Sand	"	9,250	13,700
Total Freight	"	448,150	1,008,483
<u>St. Lawrence Canals:</u>			
Vessels	No.	1,191	1,717
Registered Tonnage	Tons	565,601	1,080,541
Passengers	No.	157	149
Barley	Tons	26,601	65,711
Oats	"	6,357	50,855
Rye	"	1,403	12,406
Wheat	"	98,977	600,053
Iron and Steel	"	43,046	51,577
Petroleum and Oils	"	23,351	33,691
Sugar	"	23,095	8,894
Pulpwood	"	18,420	9,750
Sawed Lumber	"	6,207	10,147
Hard Coal	"	2,092	2,661
Soft Coal	"	93,478	89,498
Sand	"	83,110	60,790
Total Freight	"	523,328	1,082,545
<u>Ottawa Canal:</u>			
Vessels	No.	345	417
Registered Tonnage	Tons	64,225	65,125
Passengers	No.	-	2
Total Freight	Tons	57,809	58,207
<u>Rideau Canal:</u>			
Vessels	No.	70	78
Registered Tonnage	Tons	7,211	7,962
Passengers	No.	-	2
Total Freight	Tons	4,753	5,367
<u>Chambly Canal:</u>			
Vessels	No.	98	117
Registered Tonnage	Tons	12,883	15,605
Passengers	No.	2	9
Total Freight	Tons	12,462	19,965
<u>Trent Canal:</u>			
Vessels	No.	26	69
Registered Tonnage	Tons	877	2,545
Passengers	No.	-	6
Total Freight	Tons	108	1,836
<u>Murray Canal:</u>			
Vessels	No.	26	21
Registered Tonnage	Tons	3,134	3,183
Passengers	No.	-	-
Total Freight	Tons	284	247
<u>St. Peters Canal:</u>			
Vessels	No.	99	106
Registered Tonnage	Tons	11,108	6,957
Passengers	No.	3	1
Total Freight	Tons	6,659	5,507
<u>St. Andrews Canal:</u>			
Vessels	No.	7	4
Registered Tonnage	Tons	779	1,142
Passengers	No.	4	19
Total Freight	Tons	32	782

STATISTICS CANADA LIBRARY  
BIBLIOTHEQUE STATISTIQUE CANADA



1010702240