

Published by Authority of Hon. James Malcolm, M.P.
Minister of Trade and Commerce

DEPARTMENT OF TRADE AND COMMERCE
DOMINION BUREAU OF STATISTICS
TRANSPORTATION AND PUBLIC UTILITIES BRANCH
OTTAWA

DOMINION BUREAU OF STATISTICS
JUL 15 1930
PRINTED BY THE

Dominion Statistician, R.H. Coats, B.A., F.S.S., (Hon.), F.R.S.C.
Chief, Transportation & Public Utilities Branch, G.S. Wrong, B.Sc.

SUMMARY OF CANAL STATISTICS

FOR

JUNE, 1930

Sault Ste. Marie Canals: Total traffic through the Canadian and United States locks during June amounted to 12,650,458 tons which was a decrease of 1,425,686 tons from the 1929 traffic. The largest decrease was in iron ore which was lighter than in 1929 by 1,449,276 tons. Bituminous coal increased by 128,825 tons and wheat by 2,110,684 bushels, or 23,320 tons, but other grains decreased by 5,450,806 bushels.

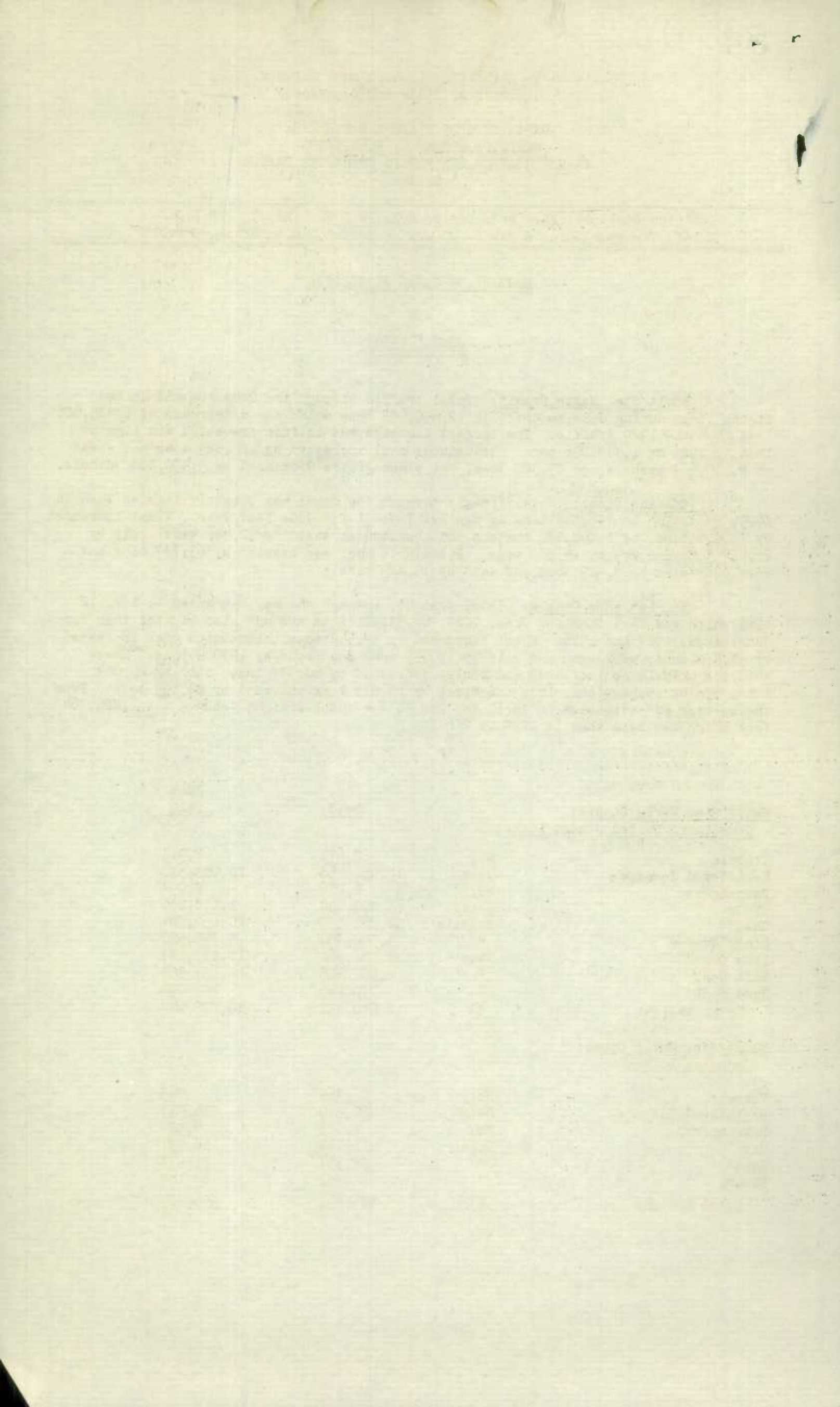
Welland Canal: Total freight through the canal was slightly lighter than in 1929, amounting to 756,563 tons as against 760,431 for June last year. Wheat increased by 54,001 tons, or 1,800,030 bushels, but barley decreased by 72,446 tons, oats by 26,412 tons and rye by 15,580 tons. Bituminous coal was heavier by 63,757 tons but coke decreased by 7,429 tons and sand by 19,429 tons.

St. Lawrence Canals: Total freight, through and way, amounted to 874,612 tons which was less than for June, 1929, by 53,321 tons and was also lighter than for June, 1928, 1927 and 1926. Wheat increased by 39,532 tons, bituminous coal increased by 33,470 tons, petroleum and oils by 19,695 tons and flour by 12,064 tons. These were the only large increases and barley decreased by 60,337 tons, oats by 29,084 tons, rye by 15,580 tons, iron and steel by 13,219 tons and sand by 23,199 tons. From the opening of navigation in April to June 30 the total freight tonnage was 1,826,764 tons which was less than in 1929 by 226,751 tons.

| | | June 1930 | June 1929 |
|--|---------|--------------|--------------|
| <u>Sault Ste. Marie Canals:</u> | | | |
| <u>Canadian & United States Locks:</u> | | | |
| Vessels | No. | 2,671 | 2,913 |
| Registered Tonnage | Tons | 12,650,458 | 10,043,532 |
| Passengers | No. | 6,266 | 7,094 |
| Flour | Ebbs. | 890,030 | 1,178,290 |
| Wheat | Bushels | 22,761,385 | 20,650,701 |
| Other Grains | " | 3,302,700 | 8,753,506 |
| Iron Ores | Tons | 8,727,861 | 10,177,137 |
| Soft Coal | " | 2,523,810 | 2,394,985 |
| Hard Coal | " | 170,286 | 148,080 |
| Total Freight | " | 12,650,458 | 14,076,144 |

Sault Ste. Marie Canal:
Canadian Lock:

| | | | |
|--------------------|------|---------|---------|
| Vessels | No. | 369 | 545 |
| Registered Tonnage | Tons | 456,270 | 736,257 |
| Passengers | No. | 4,053 | 4,584 |
| Oats | Tons | 11,142 | 24,231 |
| Wheat | " | 59,397 | 81,933 |
| Flour | " | 41,383 | 63,164 |
| Total Freight | " | 196,441 | 356,429 |



| | | June 1930 | June 1929 |
|-----------------------------|------|--------------|--------------|
| <u>Welland Canal:</u> | | | |
| Vessels | No. | 621 | 662 |
| Registered Tonnage | Tons | 681,759 | 689,782 |
| Passengers | No. | 1,576 | -- |
| Barley | Tons | 6,378 | 78,824 |
| Oats | " | 16,086 | 42,498 |
| Rye | " | 4,629 | 20,209 |
| Wheat | " | 359,918 | 305,917 |
| Soft Coal | " | 155,486 | 91,729 |
| Sand | " | 2,200 | 21,629 |
| Total Freight | " | 756,563 | 760,431 |
| <u>St. Lawrence Canals:</u> | | | |
| Vessels | No. | 1,435 | 1,604 |
| Registered Tonnage | Tons | 892,350 | 944,713 |
| Passengers | No. | 9,494 | 12,611 |
| Barley | Tons | 5,850 | 66,187 |
| Oats | " | 14,429 | 43,513 |
| Rye | " | 4,629 | 20,209 |
| Wheat | " | 351,835 | 312,303 |
| Iron and Steel | " | 13,605 | 26,824 |
| Petroleum & Other Oils | " | 54,381 | 34,686 |
| Pulpwood | " | 95,956 | 99,829 |
| Sawed Lumber | " | 6,759 | 6,939 |
| Soft Coal | " | 151,308 | 117,838 |
| Hard Coal | " | 11,730 | 8,733 |
| Sand | " | 66,850 | 90,049 |
| Total Freight | " | 874,612 | 927,933 |
| <u>Ottawa Canal:</u> | | | |
| Vessels | No. | 408 | 560 |
| Registered Tonnage | Tons | 102,926 | 97,361 |
| Passengers | No. | 5,983 | 5,325 |
| Total Freight | Tons | 80,810 | 77,178 |
| <u>Rideau Canal:</u> | | | |
| Vessels | No. | 71 | 128 |
| Registered Tonnage | Tons | 6,866 | 10,748 |
| Passengers | No. | 74 | 127 |
| Total Freight | Tons | 4,037 | 7,460 |
| <u>Chambly Canal:</u> | | | |
| Vessels | No. | 75 | 110 |
| Registered Tonnage | Tons | 8,255 | 16,332 |
| Passengers | No. | - | 6 |
| Total Freight | Tons | 11,721 | 12,732 |
| <u>Trent Canal:</u> | | | |
| Vessels | No. | 151 | 266 |
| Registered Tonnage | Tons | 5,814 | 11,523 |
| Passengers | No. | 2,057 | 3,114 |
| Total Freight | Tons | 3,406 | 3,074 |
| <u>Murray Canal:</u> | | | |
| Vessels | No. | 54 | 47 |
| Registered Tonnage | Tons | 2,283 | 7,347 |
| Passengers | No. | - | - |
| Total Freight | Tons | - | 1,097 |
| <u>St. Peter's Canal:</u> | | | |
| Vessels | No. | 95 | 142 |
| Registered Tonnage | Tons | 10,007 | 8,819 |
| Passengers | No. | 9 | 195 |
| Total Freight | Tons | 8,200 | 7,142 |
| <u>St. Andrew's Canal:</u> | | | |
| Vessels | No. | 98 | 87 |
| Registered Tonnage | Tons | 14,167 | 15,431 |
| Passengers | No. | 64 | 25 |
| Total Freight | Tons | 7,938 | 11,557 |

STATISTICS CANADA LIBRARY
BIBLIOTHÈQUE STATISTIQUE CANADA



1010702244