

Published by Authority of Hon. H.H. Stevens, M.P.,
Minister of Trade and Commerce

DOMINION BUREAU OF STATISTICS
AUG 19 1930
PROPERTY OF THE
LIBRARY

DEPARTMENT OF TRADE AND COMMERCE
DOMINION BUREAU OF STATISTICS
TRANSPORTATION AND PUBLIC UTILITIES BRANCH
OTTAWA

Dominion Statistician, R.H. Coats, B.A., F.S.S., (Hon.), F.R.S.C.
Chief, Transportation & Public Utilities Branch, G.S. Wrong, B.Sc.

SUMMARY OF CANAL STATISTICS

FOR
JULY, 1930

Historical File Copy

Sault Ste. Marie Canals:

12,367,494 tons of freight passed through the Canadian and United States locks during July, being a decrease of 1,752,314 tons as compared with July, 1929. Wheat showed an increase of 9,145,513 bushels over the corresponding month last year and hard coal increased by 83,281 tons. Iron ore decreased by 1,832,106 tons and other grains by 1,616,104 bushels.

Welland Canal:

The traffic through this canal amounted to 350,918 tons, an increase of 222,877 tons over July, 1929. Wheat shipments were 224,998 tons more than for last July and soft coal increased by 68,556 tons. Other grains showed a decrease of 62,040 tons and sand of 37,178 tons.

St. Lawrence Canals:

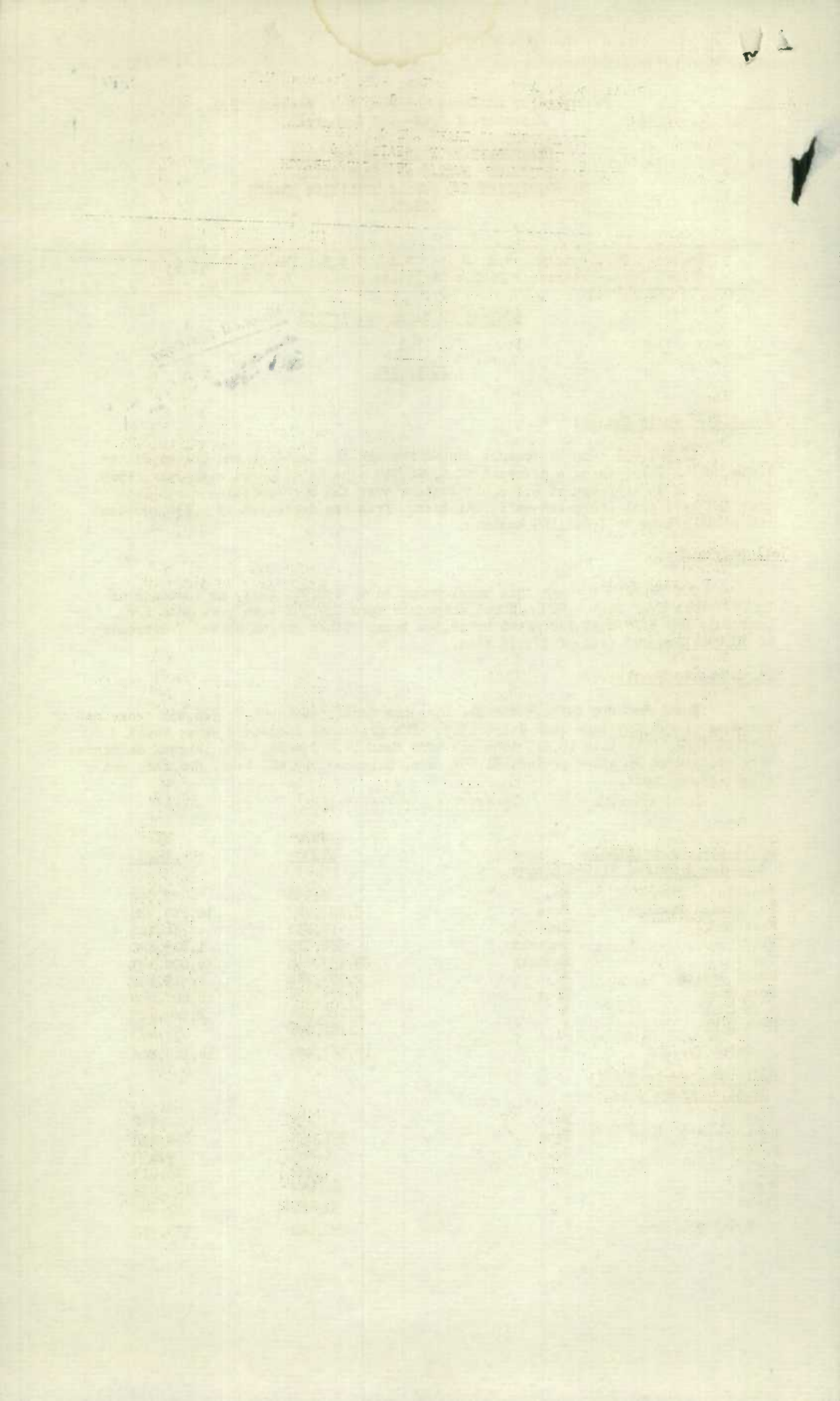
Total traffic through the St. Lawrence Canals amounted to 928,453 tons, an increase of 144,959 tons over July, 1929. The principal increases were: wheat 205,120 tons, petroleum 16,815 tons and hard coal 14,470 tons. The largest decreases were registered by other grains, 71,857 tons, pulpwood, 19,802 tons, and iron and steel, 13,053 tons.

.....

<u>Sault Ste. Marie Canals:</u>		<u>July</u>	<u>July</u>
<u>Canadian & United States Locks:</u>		<u>1930</u>	<u>1929</u>
Vessels	No.	2,958	2,955
Registered Tonnage	Tons	9,227,927	10,223,726
Passengers	No.	14,830	16,108
Flour	Barrels	982,700	1,019,840
Wheat	Bushels	25,153,656	16,008,143
Other Grains	"	2,903,748	4,519,852
Iron Ores	Tons	8,775,524	10,607,630
Soft Coal	"	2,122,084	2,284,625
Hard Coal	"	182,956	99,675
Total Freight	"	12,367,494	14,119,808

Sault Ste. Marie Canal:

<u>Canadian Lock:</u>		<u>July</u>	<u>July</u>
Vessels	No.	498	562
Registered Tonnage	Tons	591,658	680,893
Passengers	No.	8,863	9,659
Oats	Tons	6,582	15,013
Wheat	"	66,454	105,579
Flour	"	45,193	55,320
Total Freight	"	250,122	336,712



		July 1930	July 1929
<u>Welland Canal:</u>			
Vessels	No.	730	623
Registered Tonnage	Tons	728,636	559,953
Barley	"	11,427	44,788
Oats	"	4,720	23,666
Rye	"	1,254	8,070
Wheat	"	411,482	186,484
Soft Coal	"	173,210	104,654
Total Freight	"	850,918	628,041
<u>St. Lawrence Canals:</u>			
Vessels	No.	1,540	1,610
Registered Tonnage	Tons	942,925	853,717
Passengers	No.	17,359	24,188
Barley	Tons	6,603	56,135
Oats	"	2,730	20,872
Rye	"	-	6,222
Wheat	"	380,072	174,952
Iron and Steel	"	11,664	24,717
Pulpwood	"	138,244	158,046
Sawed Lumber	"	5,524	5,821
Soft Coal	"	126,241	126,895
Hard Coal	"	14,800	330
Sand	"	61,800	66,780
Total Freight	"	928,453	783,484
<u>Ottawa Canal:</u>			
Vessels	No.	684	552
Registered Tonnage	Tons	114,868	108,184
Passengers	No.	6,150	8,020
Total Freight	Tons	75,774	82,381
<u>Rideau Canal:</u>			
Vessels	No.	99	144
Registered Tonnage	Tons	7,529	9,610
Passengers	No.	322	524
Total Freight	Tons	3,954	8,470
<u>Chambly Canal:</u>			
Vessels	No.	93	151
Registered Tonnage	Tons	7,558	18,792
Passengers	No.	-	169
Total Freight	Tons	9,487	18,340
<u>Trent Canal:</u>			
Vessels	No.	449	637
Registered Tonnage	Tons	14,229	21,229
Passengers	No.	11,635	15,685
Total Freight	Tons	5,702	4,143
<u>Murray Canal:</u>			
Vessels	No.	132	126
Registered Tonnage	Tons	7,633	7,383
Passengers	No.	-	-
Total Freight	Tons	236	501
<u>St. Peters Canal:</u>			
Vessels	No.	121	124
Registered Tonnage	Tons	15,075	9,779
Passengers	No.	86	72
Total Freight	Tons	14,392	6,152
<u>St. Andrews Canal:</u>			
Vessels	No.	169	121
Registered Tonnage	Tons	19,375	15,621
Passengers	No.	373	153
Total Freight	Tons	14,956	7,638

STATISTICS CANADA LIBRARY
BIBLIOTHÈQUE STATISTIQUE CANADA



1010702245