

C-1
DOMINION BUREAU OF STATISTICS
TRANSPORTATION AND PUBLIC UTILITIES BRANCH
OTTAWA

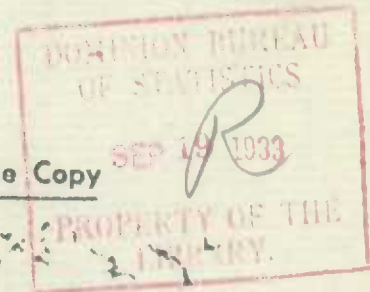
 Dominion Statistician, R.H. Coats, B.A., F.S.S., (Hon.), F.R.S.C.
 Chief, Transportation and Public Utilities Branch, G.S. Wrong, B.Sc.

SUMMARY OF CANAL TRAFFIC

FOR

AUGUST, 1933

Historical File Copy

Sault Ste. Marie Canal:
Canadian & United States Locks:

Iron ore traffic continued to increase amounting to 5,277,137 tons in August, as against 3,461,141 tons in July and only 748,189 tons in August last year. Wheat was considerably lighter than last year, but flour increased and also upbound coal. The total traffic using the canals amounted to 7,690,863 tons, or almost two and a half times the tonnage of August last year.

Welland Ship Canal:

Total freight traffic of 1,211,652 tons used the Welland Ship Canal during August which was an increase of 49,307 tons over the total tonnage for August, 1932. Wheat shipments decreased by 132,470 tons, or 4,415,670 bushels, barley by 34,206 tons, oats by 17,130 tons and petroleum and oils by 20,840 tons. Five other commodities showed small decreases, but all other commodities were heavier than in 1932. Bituminous coal increased by 53,671 tons, merchandise by 50,265 tons, cement, brick and lime by 27,628 tons, pulpwood by 20,768 tons, corn by 19,619 tons, gasoline by 19,370 tons and flour by 17,739 tons. Total traffic for the season to August 31 was 5,268,693 tons for 1933 and 4,760,141 tons for 1932.

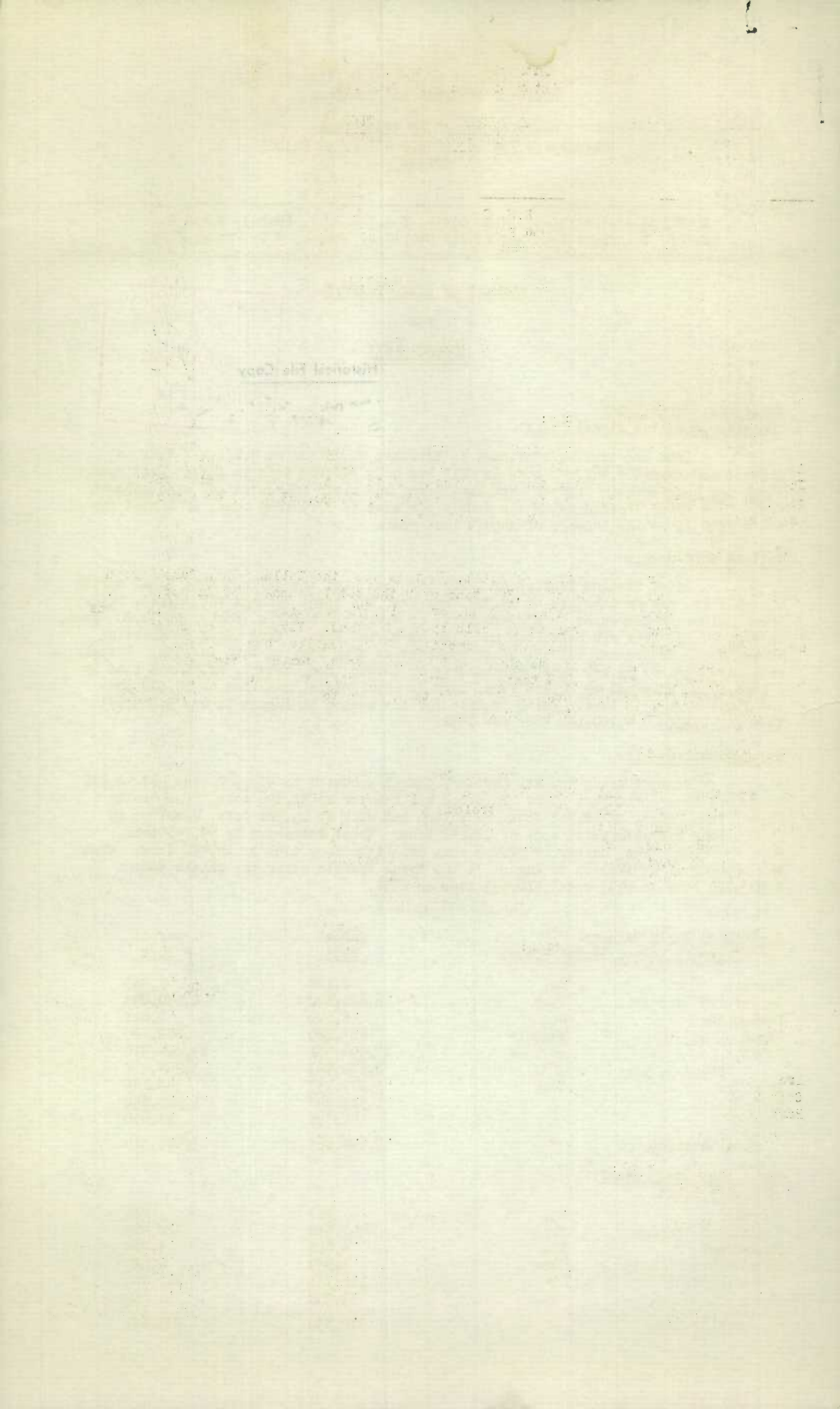
St. Lawrence Canals:

Freight using the St. Lawrence Canals amounted to 979,522 tons, or 40,382 tons more than for August 1932. Pulpwood was heavier by 32,696 tons, iron ore by 23,587 tons, paper by 12,355 tons, petroleum and oils by 15,781 tons, gasoline by 11,085 tons and anthracite coal by 12,147 tons. Wheat decreased by 99,751 tons, oats by 16,029 tons, barley by 32,012 tons and bituminous coal by 15,492 tons. From the opening of navigation to August 31 the total traffic using the canals was 4,000,722 tons in 1933 and 3,816,593 tons in 1932.

<u>Sault Ste. Marie Canals:</u>		August	August
<u>Canadian and United States Locks:</u>		1933	1932
Vessels	No.	2,168	1,389
Registered Tonnage	Tons	6,621,892	2,640,298
Passengers	No.	8,540	7,811
Flour	Barrels	863,120	802,460
Wheat	Bushels	17,994,551	23,084,516
Other Grains	"	3,639,987	3,924,168
Iron Ore	Tons	5,277,137	748,189
Soft Coal	"	1,315,997	1,220,842
Hard Coal	"	41,798	23,670
Total Freight	"	7,690,863	3,095,319

Sault Ste. Marie Canal:
Canadian Lock:

Vessels	No.	467	486
Registered Tonnage	Tons	497,932	422,429
Passengers	No.	4,265	4,948
Oats	Tons	3,639	9,633
Wheat	"	118,731	111,705
Flour	"	53,238	51,053
Total Freight	"	271,839	273,111



<u>Welland Ship Canal:</u>		<u>August</u> <u>1933</u>	<u>August</u> <u>1932</u>
Vessels	No.	731	721
Registered Tonnage	Tons	1,109,047	1,140,074
Passengers	No.
Barley	Tons	4,488	38,694
Corn	"	35,458	15,839
Oats	"	6,345	23,475
Rye	"	4,430	3,332
Wheat	"	289,766	422,236
Flour	"	37,328	19,589
Gasoline	"	36,651	17,281
Petroleum & Other Oils	"	25,140	45,980
Sugar	"	26,627	24,728
Merchandise	"	111,201	60,936
Pulpwood	"	88,998	68,230
Paper	"	25,534	18,634
Soft Coal	"	320,960	267,289
Coke	"	63,782	70,035
Iron Ore	"	41,816	29,300
Sand	"	1,400	4,900
Total Freight	"	1,211,652	1,162,345

<u>St. Lawrence Canals:</u>			
Vessels	No.	1,550	1,286
Registered Tonnage	Tons	852,521	832,514
Passengers	No.	344	769
Barley	Tons	1,176	33,188
Corn	"	6,976	5,098
Oats	"	2,825	18,854
Rye	"	3,198	5,080
Wheat	"	307,615	407,366
Flour	"	28,619	17,704
Gasoline	"	31,047	19,962
Petroleum & Other Oils	"	75,819	60,038
Sugar	"	18,492	21,033
Merchandise	"	121,312	59,823
Pulpwood	"	119,388	86,692
Paper	"	22,444	10,089
Hard Coal	"	34,053	21,906
Soft Coal	"	96,632	112,124
Sand	"	52,339	40,880
Total Freight	"	979,522	939,140

		<u>Ottawa Canal</u>		<u>Rideau Canal</u>	
		<u>1933</u>	<u>: 1932</u>	<u>1933</u>	<u>: 1932</u>
Vessels	No.	284	311	136	95
Registered Tonnage	Tons	67,242	57,128	7,296	6,751
Passengers	No.	472	374
Total Freight	Tons	62,324	49,974	3,090	3,980
		<u>Chambly Canal</u>		<u>Trent Canal</u>	
Vessels	No.	83	42	484	437
Registered Tonnage	Tons	6,125	1,623	9,629	11,278
Passengers	No.	63	35	7,790	7,280
Total Freight	Tons	7,070	1,139	1,874	1,165
		<u>Murray Canal</u>		<u>St. Peter's Canal</u>	
Vessels	No.	135	82	102	88
Registered Tonnage	Tons	7,329	2,116	7,300	7,864
Passengers	No.	429	35	83	91
Total Freight	Tons	1,248	...	3,556	3,265
		<u>St. Andrew's Canal</u>		<u>All Canadian Canals</u>	
Vessels	No.	62	41	4,034	3,589
Registered Tonnage	Tons	4,639	8,606	2,569,060	2,490,383
Passengers	No.	205	3	13,651	13,535
Total Freight	Tons	1,774	5,545	2,543,949	2,439,664

STATISTICS CANADA LIBRARY
BIBLIOTHÈQUE STATISTIQUE CANADA



1010702273