

DOMINION BUREAU OF STATISTICS  
TRANSPORTATION AND PUBLIC UTILITIES BRANCH  
OTTAWA

Dominion Statistician: R. H. Coats, LL.D., F.R.S.C., F.S.S. (Hon.)  
Chief, Transportation and Public Utilities Branch: G. S. Wrong, B.Sc.

SUMMARY OF CANAL TRAFFIC  
AUGUST, 1935.Sault Ste. Marie Canal - Canadian and United States Locks:

Total freight passing through the canal during August amounted to 7,731,060 tons as against 6,989,719 tons in 1934, an increase of 10.6 per cent. Wheat shipments more than doubled, increasing from 17,314,202 bushels last year to 38,722,817 bushels, but other grains declined from 4,439,417 bushels to 1,287,846 bushels. Iron ore increased from 4,316,053 tons to 4,801,324 tons and west bound stone increased from 33,537 tons to 101,459 tons.

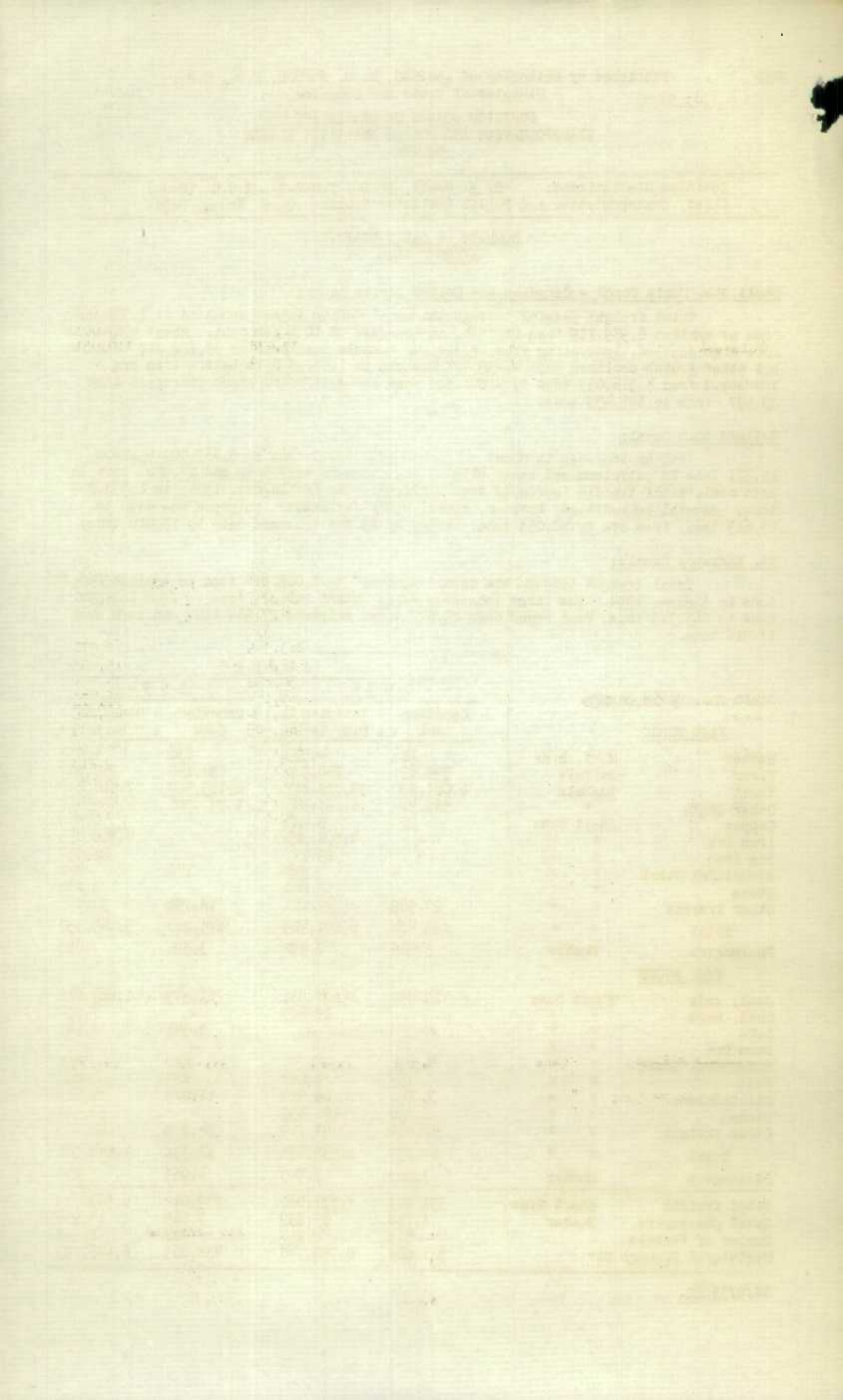
Welland Ship Canal:

With an increase in wheat shipments of 176,010 tons or 5,867,000 bushels, 12,371 tons in petroleum and other oils, 80,899 tons in wood pulp and 24,972 tons in soft coal, total traffic increased from 1,272,951 tons for August, 1934, to 1,333,875 tons. Several commodities, however, showed heavy decreases: pulpwood was down by 77,613 tons, iron ore by 58,053 tons, barley by 23,845 tons and oats by 13,012 tons.

St. Lawrence Canals:

Total freight through the canals amounted to 1,023,684 tons as against 866,256 tons in August, 1934. The large increases were: wheat 100,379 tons or from 162,970 tons to 263,349 tons, west bound corn 29,547 tons, pulpwood 17,964 tons and hard coal 17,516 tons.

		AUGUST			
		1935		1934	
		Canadian Lock	Canadian & U.S. Locks	Canadian Lock	Canadian & U.S. Locks
<u>Sault Ste. Marie Canals</u>					
<u>EAST BOUND</u>					
Lumber	M Ft. B.M.	126	4,533	636	4,832
Flour	Barrels	399,650	750,580	434,140	752,500
Wheat	Bushels	6,021,800	38,722,817	2,185,500	17,314,202
Other Grain	"	568,914	1,287,846	1,257,206	4,439,417
Copper	Short Tons	100	5,420	-	1,865
Iron Ore	" "	-	4,801,324	-	4,316,053
Pig Iron	" "	-	29,277	-	27,850
Structural Steel	" "	4	914	140	260
Stone	" "	-	5,640	-	3,250
Other Freight	" "	20,969	47,121	16,752	32,293
Total	" "	265,404	6,191,409	175,280	5,145,357
Passengers	Number	5,515	7,990	3,596	7,653
<u>WEST BOUND</u>					
Coal, soft	Short Tons	11,857	1,222,937	11,549	1,663,411
Coal, hard	" "	-	29,625	-	7,050
Coke	" "	-	-	2,541	2,541
Iron Ore	" "	-	-	-	-
Structural Steel	" "	1,055	1,240	540	595
Salt	" "	1,133	3,657	823	823
Oil-Gasclene	" "	5,611	63,920	11,275	71,688
Stone	" "	2,396	101,459	-	33,537
Other Freight	" "	40,461	93,719	34,972	62,085
Total	" "	65,837	1,539,651	64,332	1,844,362
Passengers	Number	3,223	7,949	4,069	7,281
Total freight	Short Tons	331,241	7,731,060	239,612	6,939,719
Total passengers	Number	8,738	15,939	7,665	14,934
Number of Vessels		519	2,218	482	1,992
Registered Tonnage Net		526,208	6,752,748	458,063	6,146,285





Welland Ship Canal:

		August, 1935	August, 1934
Vessels	No.	740	708
Registered Tonnage	Tons	1,214,844	1,228,369
Passengers	No.	28	-
Barley	Tons	14,006	37,851
Corn	"	34,073	31,952
Oats	"	3,624	16,636
Rye	"	336	-
Wheat	"	400,076	224,066
Flour	"	19,684	24,309
Gasolene	"	36,755	54,482
Petroleum & Other Oils	"	29,441	17,070
Sugar	"	17,607	19,662
Merchandise	"	51,762	42,003
Pulpwood	"	32,438	110,051
Autos and Parts	"	7,372	7,407
Paper	"	20,501	20,381
Wood Pulp	"	113,312	32,413
Soft Coal	"	402,760	377,788
Coke	"	49,966	94,381
Iron Ore	"	49,726	107,779
Sand	"	11,030	9,388
Total Freight	"	1,333,875	1,272,951

St. Lawrence Canals:

Vessels	No.	1,571	1,380
Registered Tonnage	Tons	866,922	820,373
Passengers	No.	351	525
Barley	Tons	18,958	22,922
Corn	"	34,047	4,500
Oats	"	4,508	10,869
Rye	"	336	-
Wheat	"	263,349	162,970
Flour	"	17,421	15,695
Gasolene	"	50,832	34,791
Petroleum & Other Oils	"	68,164	86,472
Sugar	"	21,190	26,285
Merchandise	"	62,905	46,829
Pulpwood	"	176,924	158,960
Autos and Parts	"	3,115	2,218
Paper	"	10,629	15,645
Wood Pulp	"	44,125	35,964
Hard Coal	"	43,837	26,321
Soft Coal	"	145,304	154,532
Sand	"	14,042	6,483
Total Freight	"	1,023,684	866,256

		Ottawa Canal		Rideau Canal	
		1935	1934	1935	1934
Vessels	No.	140	230	169	157
Registered Tonnage	Tons	21,262	42,479	6,620	7,736
Passengers	No.	-	707	1,556	1,911
Total Freight	Tons	13,175	34,134	3,144	3,686
		Chambly Canal		Trent Canal	
Vessels	No.	71	102	894	936
Registered Tonnage	Tons	5,943	7,709	10,755	11,105
Passengers	No.	80	66	9,172	9,737
Total Freight	Tons	3,606	6,666	405	776
		Murray Canal		St. Peter's Canal	
Vessels	No.	90	74	129	120
Registered Tonnage	Tons	16,414	4,262	18,004	11,585
Passengers	No.	529	22	222	75
Total Freight	Tons	113	1,079	10,238	8,998
		St. Andrew's Canal		All Canadian Canals	
Vessels	No.	79	65	4,402	4,257
Registered Tonnage	Tons	12,902	7,481	2,699,874	2,599,162
Passengers	No.	622	716	21,298	21,424
Total Freight	Tons	4,284	1,537	2,723,765	2,435,695

STATISTICS CANADA LIBRARY  
BIBLIOTHÈQUE STATISTIQUE CANADA



1010702295

Faint table with multiple columns and rows, likely containing statistical data. The text is too light to transcribe accurately.