

57-D-21  
D-21

For later refs. see  
Historical File Copy  
Use of electric power  
manufacturing and  
mining - statistics in Canada.

R

CANADA  
DEPARTMENT OF TRADE AND COMMERCE  
DOMINION BUREAU OF STATISTICS  
PUBLIC UTILITIES BRANCH

PRODUCTION AND USE OF ELECTRIC ENERGY

in

CANADA

1933

\*\*\*

Published by Authority of the Hon. H.H. Stevens, M.P.  
Minister of Trade and Commerce.

\*\*\*

OTTAWA

1934

THE UNIVERSITY OF TORONTO

LIBRARY

1285 UNIVERSITY AVE.

ST. JEROME, QUEBEC

10

1953

1953

PROPERTY OF THE UNIVERSITY OF TORONTO

LIBRARY

1953

10

DEPARTMENT OF TRADE AND COMMERCE  
DOMINION BUREAU OF STATISTICS  
TRANSPORTATION AND PUBLIC UTILITIES BRANCH  
OTTAWA

---

Dominion Statistician, R.H. Coats, B.A., F.S.S., (Hon.), F.R.S.C.  
Chief, Transportation and Public Utilities Branch, G.S. Wrong, B.Sc.

---

PRODUCTION AND USE OF ELECTRIC ENERGY IN CANADA

1 9 3 3

Central electric stations in Canada produced 17,746,000,000 kilowatt hours in 1933, including an estimate of 194,400,000 for small stations which do not make monthly reports. Over 98 per cent of this was produced by water power and the remainder by thermal engines. Compared with the final production data for 1932, this output was an increase of 1,694,000,000 kilowatt hours, or 10.5 per cent. Exports to the United States, amounting to 989,364,000 kilowatt hours, increased by 321,484,000 kilowatt hours, or by 48.1 per cent; 83,042,000 kilowatt hours of this increase was in surplus power exported.

Electric energy produced for use in electric boilers also showed a large increase, growing from 2,836,339,000 kilowatt hours in 1932 to 3,608,400,000 kilowatt hours in 1933. This was an increase of 772,061,000 kilowatt hours, or 27.2 per cent. The greater part of this is used in pulp and paper mills which also use enormous quantities of power for driving machines, the quantity in 1932 for these other uses being 3,000,402,000 kilowatt hours; complete returns for 1933 have not yet been received from pulp and paper mills.

Deducting exports and electric boiler consumptions from the total output leaves 12,547,838,000 kilowatt hours in 1932 and 13,148,236,000 kilowatt hours in 1933 for other uses in Canada, including all line losses. The increase here was 600,398,000 kilowatt hours, or 4.8 per cent, including the estimate for small stations.

Table 1 shows the production by stations having annual outputs of a million or more kilowatt hours. These stations produce close to 99 per cent of all stations in Canada. These are production data and do not indicate consumptions in each province. Quebec stations have been exporting to Ontario increasing quantities of power, principally to the Ontario Hydro Electric Power Commission. In 1932 these exports amounted to 1,583,467,000 kilowatt hours and in 1933 they increased to 1,911,558,000 kilowatt hours, or by 21 per cent.

Table 2.- The exports to the United States are the quantities measured at the point of export and do not include line losses from the power plants to the export point.

Table 3.- Monthly production data are published each month by the Bureau and this table is a consolidation of these data with corrections made by the stations at the end of the year. Because these corrections were so small in comparison with the totals, the monthly data were left as issued in the monthly reports. The majority of these corrections are due to errors in including station use with the output, or reporting total production including station use as net output.

Table 4.- The average daily outputs are the total monthly outputs divided by the number of days in each month. This treatment corrects only in a partial way the errors of comparing outputs of unequal periods. The consumption of electricity is considerably less on Sundays than on other days of the week. There are also reductions on Saturdays and smaller reductions on other days and the unequal number of these days in the months and also in the same month in different years has an appreciable effect on the average daily output. An extra Sunday may reduce the average by 2 per cent to 3 per cent and a month with five Sundays and five Saturdays, such as April, July and December, 1933, and January, July and October, 1932, would have a reduction of



probably over 3 per cent as compared with months with only four Sundays and four Saturdays, due entirely to the deficiencies of the present calendar. Holidays in any month also reduce the daily average output.

Table 5.- Over 95 per cent of the total output of all Canadian stations was produced by 27 large systems and over 59 per cent was produced by the four largest of these. The data in this table are production data only and do not include power purchased by these systems for distribution.

Table 6.- The increasing use of electric drive is indicated by the steadily increasing ratio of rated capacity of electric motors in manufacturing industries to total capacity of power equipment. These ratios have increased from 61 per cent in 1923 to 77 per cent in 1932 with scarcely a halt, and are as follows:

1923 .....	61 per cent	1928 .....	72 per cent
1924 .....	65 " "	1929 .....	74.7 " "
1925 .....	68.7 " "	1930 .....	74.0 " "
1926 .....	69.0 " "	1931 .....	76 " "
1927 .....	70 " "	1932 .....	77.2 " "

There is an error in these ratios in as much as an industry generating its own electricity might have motor capacity much in excess of the capacity of the prime movers and while it is correct to consider such an industry as 100 per cent electric drive, the excess is credited to other plants without electric drive or with less than 100 per cent in computing the subtotals and grand total ratios. The ratios, however, are closely relative and do indicate the great and rapid growth of electricity for power purpose in Canadian industry as a whole and in particular industries. The data in table 6 are for all manufacturing industries by groups and the data for only the large power consuming industries in each group have been shown. There were, however, many smaller industries which used electric energy entirely as a source of power and many more which were above 90 per cent electric drive. Over 83 per cent of the electric motor capacity is driven by power purchased from central electric stations and almost 65 per cent of the total power equipment in manufacturing industries is driven by central electric station power. The corresponding ratios in 1929, the last year for which data have been published for the United States, were 53.1 per cent for the United States and 58.5 per cent for Canada. Hydro-electric power is a much larger proportion of the total power used in manufacturing in Canada than in the United States and this is probably the chief factor in the greater use of central electric station power in Canada.

Table 7.- Decreased mining operations in 1932 reduced the power equipment used. The ratio of motor capacity to total capacity, however, for all mines remained practically unchanged.

Table 8.- Power equipment in manufacturing industries is here shown by provinces. In Manitoba over 91 per cent of the power machinery was electric drive and in New Brunswick and Ontario over 81 per cent was electric drive. The ratios of motor capacity to total power increased in all provinces except Nova Scotia, Alberta and British Columbia.

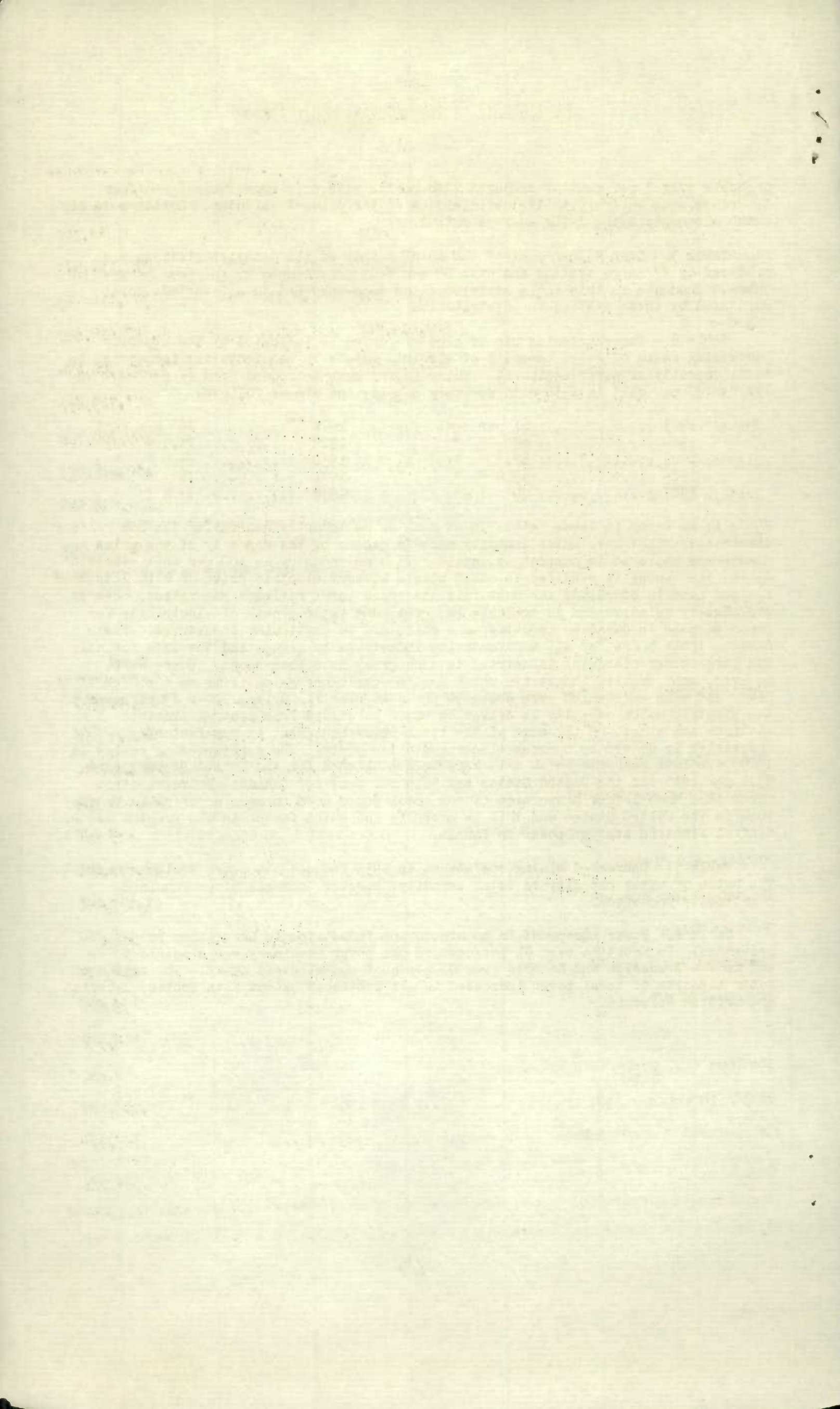


Table 1. KILOWATT HOURS GENERATED BY PROVINCES (1)

<u>1 9 3 3</u>			
Province	Water	Fuel	Total
Prince Edward Island .....	170,075	3,714,315	3,884,390
Nova Scotia .....	225,773,225	101,378,345	327,151,570
New Brunswick .....	347,305,290	29,810,855	377,116,145
Quebec .....	9,627,614,820	.....	9,627,614,820
Ontario .....	4,625,779,298	121,600	4,625,900,898
Manitoba .....	877,618,693	84,600	877,703,293
Saskatchewan .....	196,012,300	129,688,408	325,700,708
Alberta .....	132,639,780	48,036,237	180,676,017
British Columbia .....	1,204,922,421	960,395	1,205,882,816
<b>TOTAL</b> .....	<b>17,237,835,902</b>	<b>313,794,755</b>	<b>17,551,630,657</b>

Table 2. KILOWATT HOURS EXPORTED

<u>1 9 3 3</u>		Total
Hydro Electric Power Commission of Ontario .....		348,221,500
" " " " " " (Surplus) .....		82,783,408
Cedars Rapids Manufacturing and Power Co., Ltd. ....		334,128,741
Canadian Niagara Company .....		188,646,789
" " " (Surplus) .....		493,300
Ontario and Minnesota Power Company .....		16,538,050
Maine and New Brunswick Electric Power Co. ....		11,165,650
British Columbia Electric Company .....		151,249
Northport Power and Light Company .....		254,732
Maritime Electric Company .....		495,240
Sherbrooke Railway and Power Company .....		382,562
Northern B.C. Power Company .....		42,210
Fraser Companies, Ltd. ....		5,803,400
Detroit and Windsor Subway Co. ....		257,300
<b>TOTAL</b> .....		<b>989,364,131</b>

(1) Production of stations having annual outputs of a million or more kilowatt hours.

RECORDS OF THE DEPARTMENT OF THE INTERIOR

DATE	DESCRIPTION	AMOUNT	BY	FOR
1892				
1893				
1894				
1895				
1896				
1897				
1898				
1899				
1900				
1901				
1902				
1903				
1904				
1905				
1906				
1907				
1908				
1909				
1910				
1911				
1912				

STATE DEPARTMENT

1912

RECORDS OF THE DEPARTMENT OF THE INTERIOR

STATE DEPARTMENT

1912



Table 3.

OUTPUT OF LARGE CENTRAL ELECTRIC STATIONS IN CANADA (A) MONTHLY OUTPUT  
(Thousands of Kilowatt Hours)

Month	Totals for Canada			Generated by Water Power					Generated by Fuel		Total Exports
	Water	Fuel	Total	Maritime Provinces	Quebec	Ontario	Prairie Provinces	British Columbia	Prairie Provinces	Other Provinces	
<u>1 9 3 2</u>											
January .....	1,382,794	31,124	1,413,918	48,584	721,827	374,534	129,950	107,899	20,382	10,742	61,767
February .....	1,297,892	27,241	1,325,133	46,998	682,589	355,865	115,399	97,041	18,125	9,116	52,422
March .....	1,363,912	24,784	1,388,696	44,292	713,227	394,206	110,943	101,244	15,410	9,374	55,414
April .....	1,306,753	22,736	1,329,489	50,445	700,575	363,099	99,544	93,090	12,413	10,323	54,982
May .....	1,249,226	21,789	1,271,015	53,897	661,740	344,635	95,863	93,091	12,294	9,495	51,354
June .....	1,176,673	21,559	1,198,232	47,894	633,614	325,476	83,542	86,147	11,996	9,563	64,864
July .....	1,133,555	22,026	1,155,581	38,583	606,872	317,815	81,519	88,766	11,986	10,040	59,015
August .....	1,206,682	23,538	1,230,220	44,786	663,911	326,021	82,129	89,835	13,530	10,008	69,192
September .....	1,254,644	24,496	1,279,140	48,069	687,536	337,472	90,082	91,485	13,976	10,520	71,500
October .....	1,362,670	27,474	1,390,144	50,989	763,577	348,530	104,780	94,794	16,072	11,402	50,737
November .....	1,417,074	31,153	1,448,227	53,110	823,035	333,565	111,404	95,960	18,393	12,760	35,023
December .....	1,400,793	32,398	1,433,191	52,587	801,939	326,173	116,933	103,161	19,679	12,719	41,609
Undistributed corrections ...	+ 3,654	- 173	+ 3,481	- 2	- 2,711	+ 2,268	+ 3,998	+ 101	....	- 173	....
TOTAL .....	15,556,322	310,145	15,866,467	580,232	8,457,731	4,149,659	1,226,086	1,142,614	184,256	125,889	667,880
<u>1 9 3 3</u>											
January .....	1,366,358	30,303	1,396,661	44,557	785,142	318,039	116,099	102,521	18,230	12,073	48,018
February .....	1,273,127	26,453	1,299,580	33,157	718,527	323,816	104,085	93,542	16,217	10,236	46,440
March .....	1,346,862	24,198	1,371,060	40,477	747,878	350,959	108,015	99,533	15,388	8,810	45,343
April .....	1,275,420	21,385	1,296,805	43,968	703,886	338,386	97,162	92,018	12,122	9,263	35,272
May .....	1,328,370	21,572	1,349,942	50,146	757,717	335,789	90,707	94,011	12,511	9,061	42,874
June .....	1,349,267	21,633	1,370,900	54,152	774,039	349,167	80,471	91,438	12,210	9,423	86,673
July .....	1,419,853	22,804	1,442,657	53,130	818,059	374,263	81,191	93,210	12,518	10,286	119,192
August .....	1,483,131	25,085	1,508,216	43,785	865,746	392,773	83,178	97,649	13,296	11,789	109,592
September .....	1,462,491	26,831	1,489,322	44,478	829,045	400,098	90,253	98,617	13,720	13,111	122,907
October .....	1,589,072	28,536	1,617,608	55,778	878,097	434,037	111,937	109,223	15,390	13,146	127,243
November .....	1,670,149	32,214	1,702,363	59,094	888,123	492,937	117,639	112,356	17,804	14,410	106,457
December .....	1,675,105	32,780	1,707,885	50,520	862,635	515,568	125,544	120,838	18,403	14,377	99,353
Undistributed corrections ...	- 1,369	+ 1	- 1,368	+ 7	- 1,279	- 53	- 10	- 34	....	+ 1	....
TOTAL .....	17,237,836	313,795	17,551,631	573,249	9,627,615	4,625,779	1,206,271	1,204,922	177,809	135,986	989,364

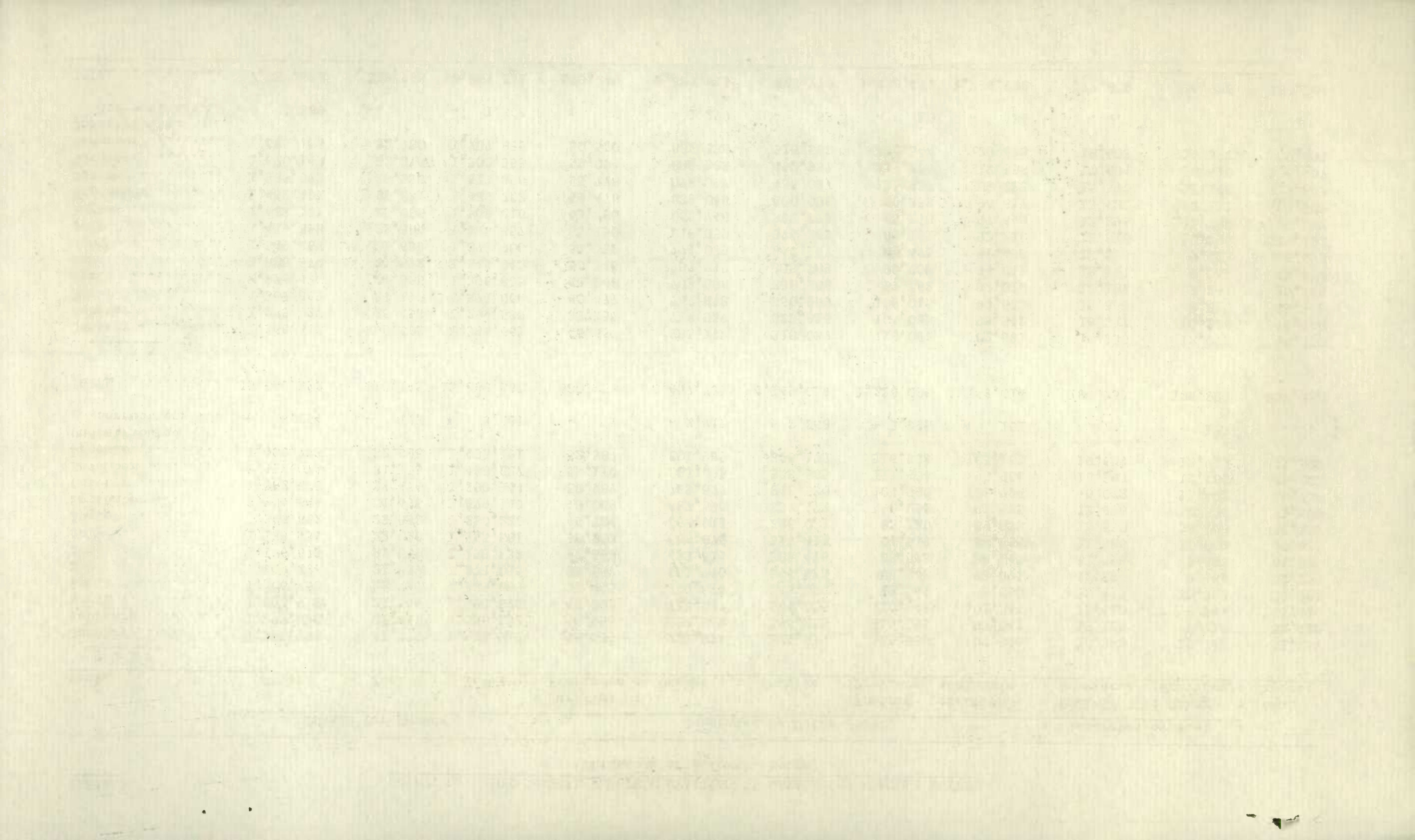


Table 4.

(B) AVERAGE DAILY OUTPUT  
(Thousands of Kilowatt Hours)

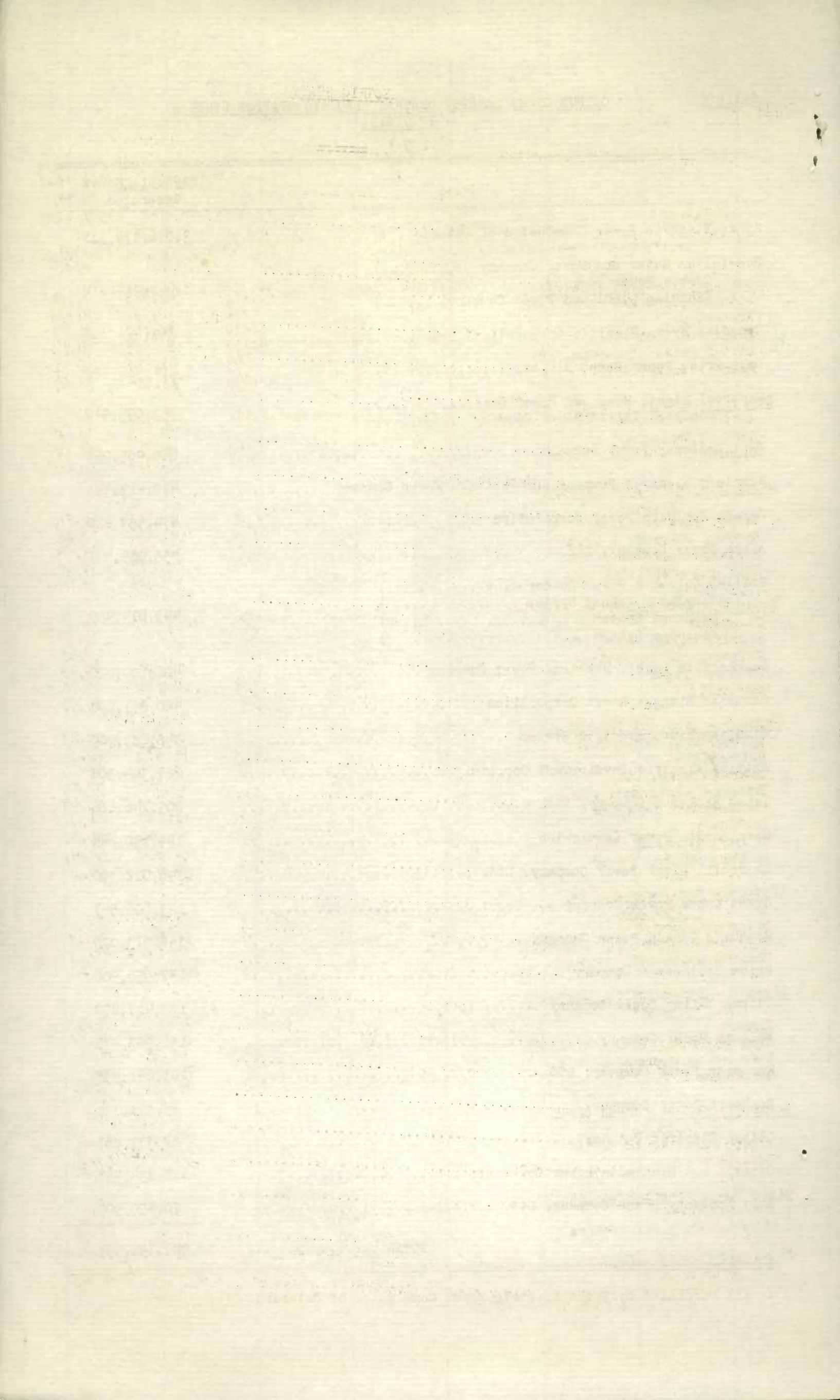
Month	Totals for Canada			Generated by Water Power					Generated by Fuel		Total Exports
	Water	Fuel	Total	Maritime Provinces	Quebec	Ontario	Prairie Provinces	British Columbia	Prairie Provinces	Other Provinces	
<u>1932</u>											
January .....	44,606	1,004	45,610	1,567	23,285	12,081	4,192	3,481	657	347	1,992
February .....	44,754	939	45,693	1,621	23,537	12,271	3,979	3,346	625	314	1,808
March .....	43,997	799	44,796	1,429	23,007	12,716	3,579	3,266	497	302	1,788
April .....	43,558	758	44,316	1,681	23,353	12,103	3,318	3,103	414	344	1,833
May .....	40,298	702	41,000	1,739	21,346	11,117	3,092	3,003	396	306	1,657
June .....	39,222	719	39,941	1,597	21,120	10,849	2,785	2,872	400	319	2,162
July .....	36,566	711	37,277	1,244	19,577	10,252	2,630	2,863	387	324	1,904
August .....	38,925	759	39,684	1,445	21,416	10,517	2,649	2,898	436	323	2,232
September .....	41,821	817	42,638	1,602	22,918	11,249	3,003	3,049	466	351	2,383
October .....	43,957	886	44,843	1,642	24,632	11,243	3,380	3,058	518	368	1,637
November .....	47,236	1,038	48,274	1,770	27,435	11,119	3,713	3,199	613	425	1,167
December .....	45,186	1,045	46,231	1,696	25,868	10,522	3,772	3,328	635	410	1,342
Undistributed corrections ...	+ 10	...	+ 10	...	- 7	+ 6	+ 11	...	...	...	...
AVERAGE .....	42,504	847	43,351	1,585	23,109	11,338	3,350	3,122	503	344	1,825
<u>1933</u>											
January .....	44,076	978	45,054	1,438	25,327	10,259	3,745	3,307	589	389	1,549
February .....	45,469	945	46,414	1,185	25,662	11,564	3,717	3,341	579	366	1,659
March .....	43,447	780	44,227	1,305	24,125	11,321	3,485	3,211	496	284	1,463
April .....	42,514	713	43,227	1,465	23,463	11,280	3,239	3,067	404	309	1,176
May .....	42,851	696	43,547	1,618	24,442	10,832	2,926	3,033	404	292	1,383
June .....	44,976	721	45,697	1,805	25,802	11,639	2,682	3,048	407	314	2,889
July .....	45,802	735	46,537	1,714	26,389	12,073	2,619	3,007	404	331	3,854
August .....	47,843	809	48,652	1,413	27,927	12,670	2,683	3,150	429	380	3,535
September .....	48,750	894	49,644	1,483	27,635	13,337	3,008	3,287	457	437	4,097
October .....	51,260	921	52,181	1,799	28,326	14,001	3,611	3,523	497	424	4,105
November .....	55,671	1,074	56,745	1,970	29,604	16,431	3,921	3,745	594	480	3,549
December .....	54,036	1,057	55,093	1,630	27,827	16,631	4,050	3,898	594	463	3,205
Undistributed corrections ...	- 4	...	- 4	...	- 4	...	...	...	...	...	...
AVERAGE .....	47,227	859	48,086	1,571	26,377	12,673	3,305	3,301	487	372	2,711

No.	Date	Particulars	Debit	Credit	Balance	Total	Total	Total
1	1/1/19	By Balance b/d		1000	1000			
2	1/15/19	To Cash	500			500		
3	1/20/19	To Cash	250			750		
4	1/25/19	To Cash	250			1000		
5	1/30/19	To Cash	250			1250		
6	2/5/19	To Cash	250			1500		
7	2/10/19	To Cash	250			1750		
8	2/15/19	To Cash	250			2000		
9	2/20/19	To Cash	250			2250		
10	2/25/19	To Cash	250			2500		
11	2/28/19	To Cash	250			2750		
12	3/5/19	To Cash	250			3000		
13	3/10/19	To Cash	250			3250		
14	3/15/19	To Cash	250			3500		
15	3/20/19	To Cash	250			3750		
16	3/25/19	To Cash	250			4000		
17	3/30/19	To Cash	250			4250		
18	4/5/19	To Cash	250			4500		
19	4/10/19	To Cash	250			4750		
20	4/15/19	To Cash	250			5000		
21	4/20/19	To Cash	250			5250		
22	4/25/19	To Cash	250			5500		
23	4/30/19	To Cash	250			5750		
24	5/5/19	To Cash	250			6000		
25	5/10/19	To Cash	250			6250		
26	5/15/19	To Cash	250			6500		
27	5/20/19	To Cash	250			6750		
28	5/25/19	To Cash	250			7000		
29	5/30/19	To Cash	250			7250		
30	6/5/19	To Cash	250			7500		
31	6/10/19	To Cash	250			7750		
32	6/15/19	To Cash	250			8000		
33	6/20/19	To Cash	250			8250		
34	6/25/19	To Cash	250			8500		
35	6/30/19	To Cash	250			8750		
36	7/5/19	To Cash	250			9000		
37	7/10/19	To Cash	250			9250		
38	7/15/19	To Cash	250			9500		
39	7/20/19	To Cash	250			9750		
40	7/25/19	To Cash	250			10000		
41	7/30/19	To Cash	250			10250		
42	8/5/19	To Cash	250			10500		
43	8/10/19	To Cash	250			10750		
44	8/15/19	To Cash	250			11000		
45	8/20/19	To Cash	250			11250		
46	8/25/19	To Cash	250			11500		
47	8/30/19	To Cash	250			11750		
48	9/5/19	To Cash	250			12000		
49	9/10/19	To Cash	250			12250		
50	9/15/19	To Cash	250			12500		
51	9/20/19	To Cash	250			12750		
52	9/25/19	To Cash	250			13000		
53	9/30/19	To Cash	250			13250		
54	10/5/19	To Cash	250			13500		
55	10/10/19	To Cash	250			13750		
56	10/15/19	To Cash	250			14000		
57	10/20/19	To Cash	250			14250		
58	10/25/19	To Cash	250			14500		
59	10/30/19	To Cash	250			14750		
60	11/5/19	To Cash	250			15000		
61	11/10/19	To Cash	250			15250		
62	11/15/19	To Cash	250			15500		
63	11/20/19	To Cash	250			15750		
64	11/25/19	To Cash	250			16000		
65	11/30/19	To Cash	250			16250		
66	12/5/19	To Cash	250			16500		
67	12/10/19	To Cash	250			16750		
68	12/15/19	To Cash	250			17000		
69	12/20/19	To Cash	250			17250		
70	12/25/19	To Cash	250			17500		
71	12/30/19	To Cash	250			17750		
72	1/5/20	To Cash	250			18000		
73	1/10/20	To Cash	250			18250		
74	1/15/20	To Cash	250			18500		
75	1/20/20	To Cash	250			18750		
76	1/25/20	To Cash	250			19000		
77	1/30/20	To Cash	250			19250		
78	2/5/20	To Cash	250			19500		
79	2/10/20	To Cash	250			19750		
80	2/15/20	To Cash	250			20000		
81	2/20/20	To Cash	250			20250		
82	2/25/20	To Cash	250			20500		
83	2/28/20	To Cash	250			20750		
84	3/5/20	To Cash	250			21000		
85	3/10/20	To Cash	250			21250		
86	3/15/20	To Cash	250			21500		
87	3/20/20	To Cash	250			21750		
88	3/25/20	To Cash	250			22000		
89	3/30/20	To Cash	250			22250		
90	4/5/20	To Cash	250			22500		
91	4/10/20	To Cash	250			22750		
92	4/15/20	To Cash	250			23000		
93	4/20/20	To Cash	250			23250		
94	4/25/20	To Cash	250			23500		
95	4/30/20	To Cash	250			23750		
96	5/5/20	To Cash	250			24000		
97	5/10/20	To Cash	250			24250		
98	5/15/20	To Cash	250			24500		
99	5/20/20	To Cash	250			24750		
100	5/25/20	To Cash	250			25000		

Table 5.- OUTPUT OF 27 LARGEST CENTRAL ELECTRIC STATION SYSTEMS  
IN CANADA  
1 9 3 3

	Kilowatt Hours Generated
Hydro Electric Power Commission of Ontario .....	3,076,479,311
Shawinigan Water and Power Company .....	
Quebec Power Company .....	3,005,812,940
Canadian Light and Power Company.....)	
Canadian Hydro Electric Corporation, Ltd. ....	2,674,387,629
Duke Price Power Company, Ltd. ....	1,724,566,120
Montreal Light, Heat and Power Cons. ....)	
Montreal Island Power Company .....	753,095,910
West Kootenay Power Company .....	660,905,059
Winnipeg Electric Company and Manitoba Power Company .....	479,413,393
Canada Northern Power Corporation .....	474,553,410
Alcoa Power Company, Ltd. ....	455,089,497
British Columbia Power Corporation .....	
Vancouver Island System .....	
Mainland System .....	443,014,459
Kamloops System .....	
Beauharnois Light, Heat and Power Company .....	422,100,000
Canadian Niagara Power Corporation .....	420,851,200
Winnipeg Hydro Electric System .....	398,289,900
Abitibi Electric Development Co.,Ltd. ....	227,324,308
James Maclaren Company, Ltd. ....	205,146,166
Nova Scotia Power Commission .....	199,150,648
Churchill River Power Company, Ltd. ....	196,012,300
Great Lakes Power Company .....	173,606,547
Southern Canada Power Company .....	157,973,070
Price Brothers & Company .....	157,950,900
Ottawa Valley Power Company .....	/ 139,417,890
Calgary Power Company .....	131,983,470
Huronian Power Company, Ltd. ....	103,241,435
Seaboard Power Company .....	85,971,334
Ottawa Electric Company .....	82,777,267
Ontario and Minnesota Power Co. ....	78,234,490
East Kootenay Power Company, Ltd. ....	70,450,900
TOTAL .....	16,997,799,553

/ All purchased by Hydro Electric Power Commission of Ontario.



POWER EQUIPMENT OF MANUFACTURING INDUSTRIES<sup>†</sup>

Table 6.

IN CANADA

1932

INDUSTRIES	Electric Motors Operated					: Electric Power : Per cent : of : total
	: Total : power : employed	: By : purchased : power	: By power : generated : in the : industries:	: Total : motor : capacity	: Total : Power	
	H.P.	H.P.	H.P.	H.P.	P.C.	
<u>Group 1.- Vegetable Products</u>	326,829	217,432	28,153	245,585	75.14	
Biscuits, confectionery, etc.	22,731	18,668	268	18,936	83.30	
Breweries	23,418	17,032	1,830	18,862	80.54	
Flour and feed mills	123,030	63,627	2,979	66,606	54.14	
Rubber goods, footwear, etc.	63,330	60,420	697	61,117	96.51	
Sugar refineries	21,539	6,859	14,255	21,114	98.03	
<u>Group 2.- Animal Products</u>	100,069	73,615	1,981	75,596	75.54	
Butter and cheese	27,673	20,373	...	20,373	73.62	
Leather tanneries	12,793	10,514	222	10,736	83.92	
Slaughtering & meat packing	32,248	27,271	430	27,701	85.90	
<u>Group 3.- Textiles &amp; Textile Products</u>	189,915	132,786	38,536	171,322	90.21	
Cotton yarn and cloth	81,471	50,169	24,801	74,970	92.02	
Dyeing, cleaning & laundry	14,762	9,241	5,320	14,561	98.64	
Hosiery & knitted goods	19,222	11,687	3,185	14,872	77.37	
Silk and artificial silk	14,423	13,998	...	13,998	97.05	
<u>Group 4.- Wood and Paper Products</u>	2,094,010	1,168,212	331,837	1,500,049	71.64	
Furniture	20,759	10,730	833	11,563	55.70	
Planing mills, sash & door	47,262	26,958	1,028	27,986	59.21	
Printing and publishing	24,026	22,523	...	22,523	93.74	
Pulp and Paper	1,662,146	1,031,670	294,812	1,326,482	79.81	
Saw mills	257,172	20,644	30,526	51,170	19.90	
<u>Group 5.- Iron and Iron Products</u>	623,888	444,951	74,713	519,664	83.29	
Agricultural implements	23,779	18,556	690	19,246	80.94	
Automobiles	43,377	21,839	19,717	41,556	95.80	
Automobile supplies	20,873	19,214	...	19,214	92.05	
Bridge & structural steel	28,093	27,073	570	27,643	98.40	
Castings and forgings	65,868	61,401	1,066	62,467	94.84	
Machinery	32,945	24,996	8,620	33,616	100.00	
Primary iron and steel	237,063	126,118	32,542	158,660	66.93	
Railway rolling stock	109,775	91,161	6,644	97,805	89.10	
<u>Group 6.- Non-ferrous Metal Products</u>	450,271	354,327	22,023	376,350	83.58	
Brass and copper	19,192	18,514	340	18,854	98.24	
Electrical apparatus & supplies	87,634	74,478	4,930	79,408	90.61	
Non-ferrous metal smelting	334,675	252,565	16,753	269,318	80.47	
<u>Group 7.- Non-metallic Mineral Products</u>	209,484	175,364	11,701	187,065	89.30	
Cement	75,996	75,493	...	75,493	99.34	
Clay products (domestic clay)	23,406	15,833	302	16,135	68.94	
Coke and gas products	26,643	19,293	6,858	25,151	94.40	
Petroleum	31,674	16,272	1,902	18,174	57.38	
<u>Group 8.- Chemicals and Chemical Products</u>	105,671	78,109	7,213	85,322	80.74	
Acids, alkalies and salts	52,923	32,970	5,977	38,947	73.59	
Fertilizers	15,631	15,579	...	15,579	99.67	
<u>Group 9.- Miscellaneous Industries</u>	57,283	49,368	...	49,368	86.18	
Ice, artificial	10,216	10,166	...	10,166	99.51	
Ship building and repairs	30,868	26,669	...	26,669	86.40	
<u>Total All Manufacturing Industries</u> †	4,157,420	2,694,164	516,157	3,210,321	77.22	

† Excluding central electric stations.

Faint, illegible text, possibly bleed-through from the reverse side of the page. The text is arranged in several columns and appears to be a list or a series of entries.



Table 7. POWER EMPLOYED IN THE MINING INDUSTRIES<sup>†</sup> IN CANADA, 1932

INDUSTRIES	: Total : Power : Employed : H.P.	: Electric Motors Operated			: Total : motor : capacity : H.P.	: Electric : Power : Per cent : of : total : P.C.
		: By : purchased : power : H.P.	: By power : generated : in the : industries : H.P.	: Total : motor : capacity : H.P.		
Metal mining	228,352	181,571	12,497	194,068	84.99	
Non-metal mining	44,603	38,708	387	39,095	87.65	
Sand, gravel and stone	44,826	31,683	699	32,382	72.24	
Coal, gas, petroleum	164,563	35,168	63,043	98,211	59.68	
Total Mining <sup>†</sup>	482,344	287,130	76,626	363,756	75.41	

<sup>†</sup> Excluding non-ferrous smelting, salt, cement, clay products and lime.

Table 8. TOTAL POWER EMPLOYED IN MANUFACTURING INDUSTRIES<sup>#</sup> IN CANADA  
1932

PROVINCES	: Total : Power : Employed : H.P.	: Electric Motors Operated			: Total : motor : capacity : H.P.	: Electric : Power : Per cent : of : total : P.C.
		: By : purchased : power : H.P.	: By power : generated : in the : industries : H.P.	: Total : motor : capacity : H.P.		
Prince Edward Island	4,203	660	377	1,037	24.67	
Nova Scotia	198,470	89,673	12,458	102,131	51.46	
New Brunswick	159,521	83,706	45,950	129,656	81.28	
Quebec	1,480,415	1,037,504	115,646	1,153,150	77.89	
Ontario	1,629,426	1,085,019	236,659	1,321,678	81.11	
Manitoba	141,254	128,889	511	129,400	91.61	
Saskatchewan	30,207	19,334	57	19,391	64.19	
Alberta	68,624	42,468	2,476	44,944	65.49	
British Columbia and Yukon	445,300	206,911	102,023	308,934	69.38	
CANADA	4,157,420	2,694,164	516,157	3,210,321	77.22	

<sup>#</sup> Excluding central electric stations.



1010311040

c1

*(The following table is a reconstruction of the data visible on the page, which is oriented upside down. The text is mirrored and difficult to read, but the structure appears to be a multi-column table with numerical values.)*

Province	1950	1951	1952	1953	1954	1955	1956	1957	1958	1959	1960
Alberta	1,200,000	1,300,000	1,400,000	1,500,000	1,600,000	1,700,000	1,800,000	1,900,000	2,000,000	2,100,000	2,200,000
Saskatchewan	800,000	850,000	900,000	950,000	1,000,000	1,050,000	1,100,000	1,150,000	1,200,000	1,250,000	1,300,000
Manitoba	600,000	650,000	700,000	750,000	800,000	850,000	900,000	950,000	1,000,000	1,050,000	1,100,000
Ontario	1,500,000	1,600,000	1,700,000	1,800,000	1,900,000	2,000,000	2,100,000	2,200,000	2,300,000	2,400,000	2,500,000
Quebec	1,000,000	1,100,000	1,200,000	1,300,000	1,400,000	1,500,000	1,600,000	1,700,000	1,800,000	1,900,000	2,000,000
Atlantic	400,000	450,000	500,000	550,000	600,000	650,000	700,000	750,000	800,000	850,000	900,000
Total	5,500,000	5,800,000	6,100,000	6,400,000	6,700,000	7,000,000	7,300,000	7,600,000	7,900,000	8,200,000	8,500,000