

DOMINION BUREAU OF STATISTICS

OTTAWA - CANADA

Published by Authority of the Minister of Industry, Trade and Commerce

Vol. 10, No. 8

Price: 20 cents, \$2.00 a year

System of National Accounts

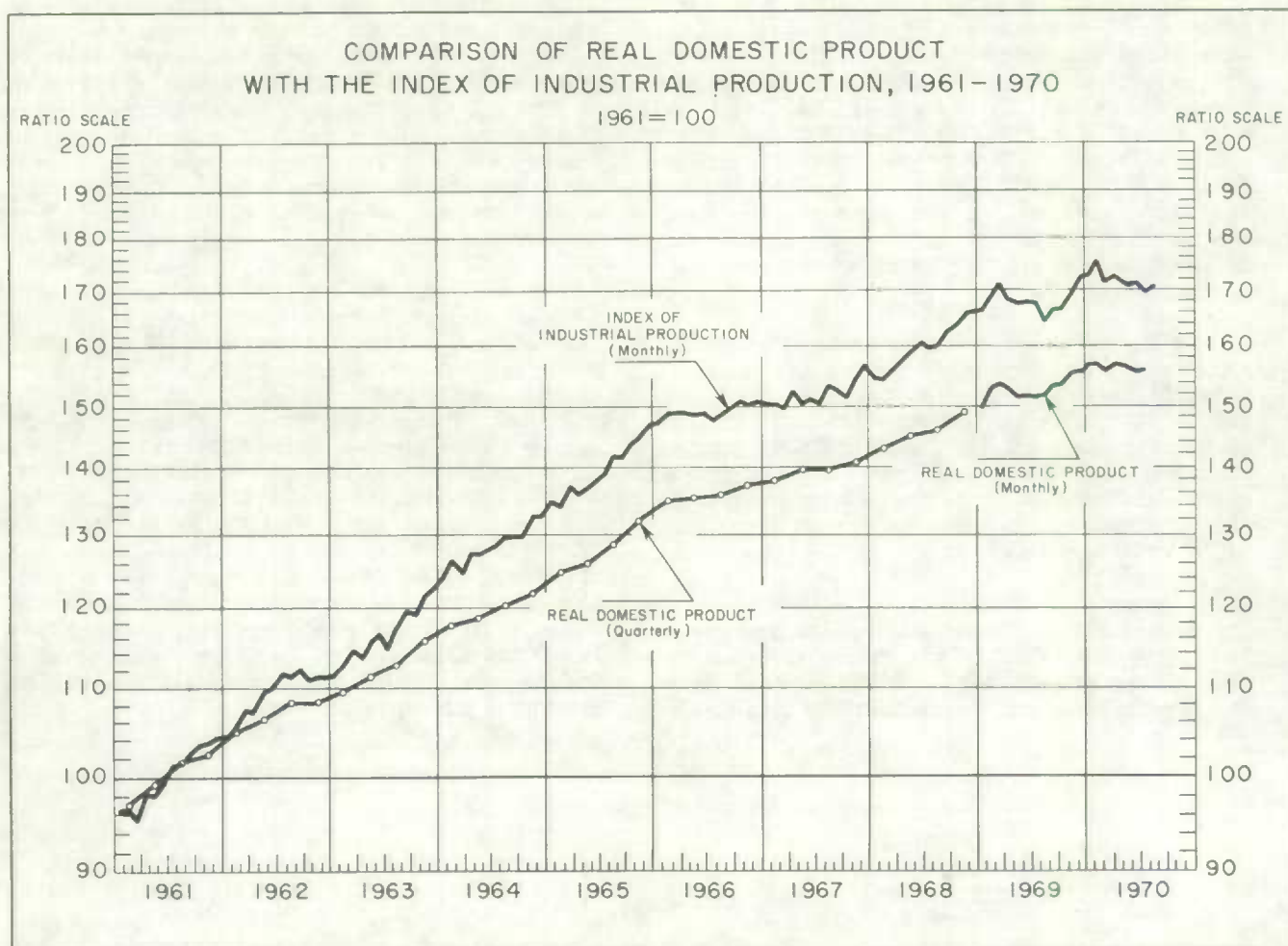
Domestic Product by Industry

INDEX OF INDUSTRIAL PRODUCTION (1961=100)

AUGUST 1970

The seasonally adjusted index of industrial production increased by 0.3 per cent in August.

Real Domestic Product (seasonally adjusted) increased by 0.4 per cent in July.



Indexes of Real Domestic Product for August will appear in the September issue. These data will appear earlier in the D.B.S. Daily.

National Output and Productivity Division
Industrial Output Section

October 1970
2505-502

THE SYSTEM OF NATIONAL ACCOUNTS

In Canada, the National Accounts have been developed since the close of the Second World War in a series of publications relating to their constituent parts. These have now reached a stage of evolution where they can be termed a "System of National Accounts". For purposes of identification, all publications (containing tables of statistics, descriptions of conceptual frameworks, and descriptions of sources and methods) which make up this System will now carry the term "System of National Accounts" as a general title.

The System of National Accounts in Canada consists of several parts. The annual and quarterly Income and Expenditure Accounts (included with Catalogue Nos. carrying the prefix 13) were, historically speaking, the first set of statistics to be referred to with the title "National Accounts" (National Accounts, Income and Expenditure). The Balance of International Payments data, (Catalogue Nos. with prefix 67), in their more summary form, are also part of the System of National Accounts and they, in fact, pre-date the Income and Expenditure Accounts.

Greatly expanded structural detail on industries and on goods and services is portrayed in the Input-Output Tables of the System (Catalogue Nos. with prefix 15). The Indexes of Real Domestic Product by Industry (included with Catalogue Nos. carrying the prefix 61) provide "constant dollar" measures of the contribution of each industry to gross domestic product at factor cost. Inputs and outputs are related in Productivity Studies (Catalogue Nos. with prefix 14).

Both the Input-Output Tables and Indexes of Real Domestic Product by Industry use the establishment as the primary unit of industrial production. Measures of financial transactions are provided by

the Financial Flow Accounts (Catalogue Nos. with prefix 13). Types of lenders and financial instruments are the primary detail in these statistics, and the legal entity is the main unit of classification of transactors. Also, provision is made in the System for incorporation of balance sheet (wealth) estimates when such data are sufficiently developed.

The System of National Accounts provides an overall conceptually integrated framework in which the various parts can be considered as interrelated sub-systems. At present, direct comparisons amongst those parts which use the establishment as the basic unit and those which use the legal entity can be carried out only at highly aggregated levels of data. However, the Dominion Bureau of Statistics is continuing research on enterprise-company-establishment relationships; it may eventually be feasible to reclassify the data which are on one basis (say the establishment basis) to correspond to the units employed on another (the company or the enterprise basis).

In its broad outline, the Canadian System of National Accounts bears a close relationship to the international standard as described in the United Nations publication, "A System of National Accounts" (Studies in Methods, Series F., No. 2, Rev. 3, Statistical Office, Department of Economic and Social Affairs, United Nations, New York, 1968). In the future, a document on the conceptual framework of the Canadian System of National Accounts will be prepared for publication by the Dominion Bureau of Statistics. This document will furnish the broad theoretical outline of the System. The finer conceptual details, the statistical tables, and the descriptions of sources and methods as they pertain to the individual parts of the System, will appear in the various regular and occasional publications relating to those parts.

August Index of Industrial Production

The seasonally adjusted Index of Industrial Production for August rose by 0.3% to 170.2 from a revised July level of 169.7. Most of the increase came from Mining where the index rose from 171.6 to 174.0 (+ 1.4%). Manufacturing increased by 0.2% to reach a level of 165.4. Utilities fell from 206.3 to 205.9 (- 0.2%).

In Mining, metal mines went up by 0.8%. Iron ore mines showed an increase of 3.7%, which is in line with increases in primary metal industries. Output of the coal mining industry increased by 7.9% in response to increased export demand, largely from Japan. Most of this larger production occurred in Alberta and British Columbia. All components contributed to the increase in the non-metal mining industries.

In manufacturing, non-durables fell by 0.4%. Most of the decrease came from the pulp and paper industries, where there were several strikes. Canadian exports of wood pulp also declined. The rubber industries decreased by 8.7%, from an unusually high level for July. In foods and beverages, the output of fish products manufacturers continued to increase, due to large salmon catches in British Columbia. Sugar refineries returned to more normal production levels, following some inventory decumulation during the last 2 months. Tobacco production also resumed to its more normal levels, after a decline in July. In the chemicals group, mixed fertilizers production responded to increased exports demand; and manufacturers of soaps and cleaning compounds increased production, following decreases in output for the preceding three months. Movements in the output of this industry were probably in response to government regulations regarding the phosphate content of detergents which went into effect on August 1st.

Durable manufacturing went up by 0.8%. Within durables, only the electrical products industries group declined, due to a strike at the end of the month in manufacturers of major appliances and layoffs in communication equipment manufacturers. The increases in primary metal industries (steel pipes and tubes mills, iron and steel mills and iron foundries), caused partly by increased export demand for pipes from the United States, were damped by a decline in the output of smelting and refining manufacturers due to a strike in this industry. In the transportation industries, a decline of 3.6% in motor vehicles manufacturers was offset by an increase of 16.2% in motor vehicles parts and accessories output, due to increased exports to the United States. All other major groups went up.

In utilities, all the decline was due to electric power utilities while gas distribution and water systems and other utilities increased.

NOTES TO USERS

1. For a continuous record of the Index of Industrial Production, please consult the following publications:

Indexes of Real Domestic Product by Industry (1961 Base), Catalogue No. 61-506, for the period 1919 to 1967; 1970 Annual Supplement to Monthly Index of Industrial Production, Catalogue No. 61-005 for the years 1968 and 1969, (published with April 1970 issue); and current issues for the year 1970.
2. The figures in table 1 and 2 may not reconcile with those on the Index of Industrial production in tables 3, 4, 5 and 6 because of small revisions to earlier months which have not been incorporated in the latter tables.

TABLE 1. Seasonally Adjusted Indexes of Industrial Production

(1961=100)

S.I.C.	Industry or industry group	1961 percentage weights	Seasonally adjusted					
			1970					
			Mar.	Apr.	May	June	July	Aug.
	INDEX OF INDUSTRIAL PRODUCTION	31.851	171.5	172.4	170.5	171.2	169.7	170.2
4	MINES (including Milling), QUARRIES AND OIL WELLS	4.298	170.6	164.2	166.6	170.8	171.6	174.0
4:01	Metal mines	2.463	148.4	145.9	149.0	153.9	156.3	157.5
051;052	Placer gold and gold quartz mines325	50.4	47.0	51.0	50.3	48.4	44.9
058	Iron mines309	330.6	338.3	349.1	336.2	347.0	359.7
053-057;059	Miscellaneous metal mines, n.e.s.	1.829	135.0	130.9	132.5	141.5	143.2	143.4
4:02	Mineral fuels	1.030	200.8	182.6	190.8	203.5	202.3	205.0
061	Coal mines152	106.5	128.5	139.1	155.9	158.9	171.5
064	Crude petroleum and natural gas878	217.1	191.9	199.8	211.7	209.8	210.8
4:03	Non-metal mines except coal mines385	263.9	258.0	248.3	218.8	218.2	230.3
071	Asbestos mines274	154.1	147.3	157.7	143.4	150.2	158.7
5	MANUFACTURING	24.741	168.1	170.0	167.5	167.4	165.1	165.4
5:01-07;10-11; 18-20	NON-DURABLE MANUFACTURING	13.608	152.8	154.8	155.0	152.4	151.8	151.2
5:01	Foods and beverages	3.547	147.0	148.4	147.2	144.1	145.9	148.8
101;103	Meat products546	134.7	146.4	142.4	140.7	153.0	144.7
105;107	Dairy products524	145.2	140.0	147.2	134.1	135.5	141.3
123-125	Grain mills211	136.8	143.6	151.8	144.5	145.4	145.5
128;129	Bakery products517	106.0	106.3	106.1	106.1	101.5	103.7
131-139	Other food processors561	166.0	167.9	169.6	162.7	157.4	164.5
141-147	Beverage manufacturers820	176.0	175.6	167.9	171.1	172.4	177.8
141	Soft drink manufacturers234	208.3	201.1	195.0	183.5	205.5	202.6
143	Distilleries264	189.0	191.8	177.3	192.4	183.1	189.0
145	Breweries298	139.4	140.1	137.2	141.7	137.6	149.4
5:02	Tobacco products industries233	111.3	125.4	141.2	126.9	114.2	129.4
5:03	Rubber industries411	147.3	142.6	170.1	167.1	176.3	160.9
5:04	Leather industries293	95.4	98.5	96.9	99.0	100.6	102.8
174	Shoe factories195	96.3	98.3	96.4	99.2	98.5	101.9
5:05	Textile industries904	180.3	188.6	182.6	183.8	175.5	173.3
183	Cotton yarn and cloth mills211	96.5	105.2	105.6	99.9	102.7	96.1
201	Synthetic textile mills304	262.4	273.7	260.0	261.8	250.8	248.1
5:06	Knitting mills218	138.8	136.2	138.1	133.2	128.8	132.9
5:07	Clothing industries854	118.4	118.1	121.4	123.1	117.6	120.5
5:10	Paper and allied industries	2.675	155.5	153.6	150.5	145.5	143.2	134.8
271	Pulp and paper mills	2.170	157.5	154.3	150.3	144.7	142.6	132.4
273;274	Paper box and bag manufacturers and other paper converters453	147.9	152.6	153.6	150.5	146.9	145.2
5:11	Printing, publishing and allied industries	1.353	141.2	144.5	147.3	149.5	151.3	148.7
5:18	Petroleum and coal products industries583	152.0	152.3	166.9	156.7	154.3	162.2

TABLE 1. Seasonally Adjusted Indexes of Industrial Production - Concluded
(1961=100)

S.I.C.	Industry or industry group	1961 percentage weights	Seasonally adjusted					
			1970					
			Mar.	Apr.	May	June	July	Aug.
NON-DURABLE MANUFACTURING - Concluded:								
5:19 374	Chemical and chemical products industries ... Manufacturers of pharmaceuticals and medicines	1.682 .215	175.7 223.1	182.4 239.2	175.7 223.9	173.3 212.4	176.0 253.8	177.0
375 376	Paint and varnish manufacturers Manufacturers of soap and cleaning compounds150 .148	114.4 158.8	119.2 186.9	120.8 151.3	120.9 131.4	120.9 124.8	120.8 150.5
378	Manufacturers of industrial chemicals660	189.3	196.0	189.7	190.4	186.7	185.1
5:20	Miscellaneous manufacturing industries855	185.3	186.9	190.4	188.6	185.8	188.0
5:08-09;12-17	DURABLE MANUFACTURING	11.133	186.7	188.6	182.8	185.8	181.4	182.9
5:08 251 252	Wood industries Sawmills and planing mills Veneer and plywood mills	1.117 .678 .153	141.6 150.4 152.4	140.8 149.4 153.7	127.6 132.9 130.7	129.5 135.3 129.4	133.2 140.7 139.5	136.4 145.1 137.4
5:09	Furniture and fixture industries448	152.3	147.6	148.6	147.5	146.6	147.2
5:12 291 292 294 295	Primary metal industries Iron and steel mills Steel pipe and tube mills Iron foundries Smelting and refining	2.256 1.007 .126 .136 .786	167.0 187.7 175.2 114.2 139.9	165.8 182.6 189.4 122.9 140.4	159.4 171.8 149.7 126.0 141.4	169.2 190.8 156.9 107.7 146.0	158.0 181.6 142.5 106.4 132.2	161.7 190.5 206.9 117.1 119.0
5:13	Metal fabricating industries (except machinery and transportation equipment industries)	1.857	165.4	169.0	169.1	168.8	162.6	166.8
301	Boiler and plate works078	176.7	171.5	182.3	183.6	171.3	176.4
302	Fabricated structural metal industry259	167.0	177.6	183.0	191.7	175.9	185.4
303	Ornamental and architectural metal industry168	145.1	150.4	150.6	144.9	140.6	141.9
304	Metal stamping, pressing and coating industry458	173.5	173.9	166.7	174.1	166.4	175.2
305	Wire and wire products manufacturers250	152.5	160.8	168.8	149.9	154.5	151.0
306	Hardware, tool and cutlery manufacturers ..	.165	200.4	201.8	194.4	190.8	182.3	183.5
5:14	Machinery industries (except electrical machinery)995	222.9	222.1	213.7	218.9	214.2	215.4
5:15 321 323;324	Transportation equipment industries Aircraft and parts manufacturers Motor vehicle and truck body and trailer manufacturers	2.001 .486 .788	249.6 133.4 347.1	260.3 128.7 375.6	256.3 125.3 364.6	259.0 119.8 366.3	253.0 107.5 362.5	254.8 104.5 349.3
325	Motor vehicle parts and accessories manufacturers397	229.8	229.8	237.3	255.2	235.2	273.4
326	Railroad rolling stock industry076	251.2	260.3	265.8	235.5	254.7	269.0
327	Shipbuilding and repair225	152.7	152.4	143.6	151.4	166.6	163.8
5:16 332	Electrical products industries Manufacturers of major appliances (elec- tric and non-electric)	1.572 .187	206.5 173.4	208.2 179.2	199.5 146.0	197.2 148.2	196.2 165.1	189.7 156.2
334	Manufacturers of household radio and television receivers132	228.6	232.1	220.4	205.2	179.0	166.3
335	Communications equipment manufacturers479	267.0	267.9	264.4	260.2	262.8	249.7
336	Manufacturers of electrical industrial equipment305	190.2	188.8	185.6	182.8	183.9	176.7
5:17 341 348 356	Non-metallic mineral products industries Cement manufacturers Ready-mix concrete manufacturers Glass and glass products manufacturers887 .171 .079 .168	138.1 117.5 147.1 192.6	134.6 122.2 144.3 173.3	127.6 111.9 134.2 166.3	131.1 107.8 156.5 167.5	134.7 124.6 164.3 169.2	135.9 121.0 158.5 177.0
7:04	ELECTRIC POWER, GAS AND WATER UTILITIES	2.812	203.0	206.4	202.7	205.0	206.3	205.9
572	Electric power	2.270	201.7	205.3	202.0	205.2	206.4	205.1
574	Gas distribution336	256.7	260.5	252.3	249.5	251.7	256.3

TABLE 2. Indexes of Industrial Production, without Seasonal Adjustment
(1961=100)

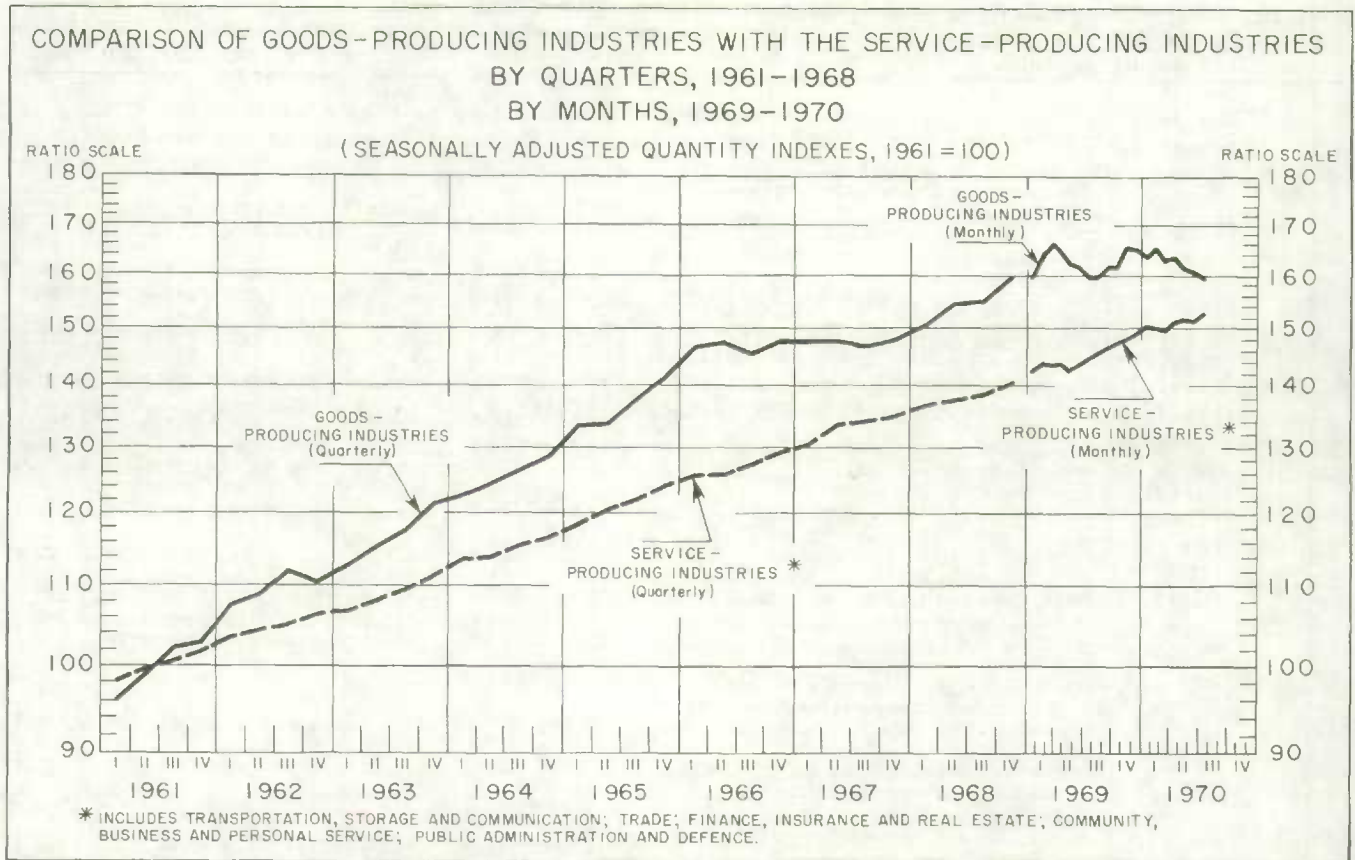
S.I.C.	Industry or industry group	Annual averages		Without seasonal adjustment					
		1968	1969	1969	1970				
				Aug.	Apr.	May	June	July	Aug.
	INDEX OF INDUSTRIAL PRODUCTION	159.8	167.9	159.5	174.0	173.5	175.6	157.3	163.8
4	MINES (including Milling), QUARRIES AND OIL WELLS	152.7	149.8	134.2	163.4	170.7	173.9	166.8	170.8
4:01	Metal mines	142.6	126.7	96.8	147.0	158.2	160.2	154.0	150.5
051;052	Placer gold and gold quartz mines	58.8	52.4	48.5	48.3	51.3	52.9	46.3	43.6
058	Iron mines	311.4	267.7	212.2	308.2	382.3	359.7	367.8	388.5
053-057;059	Miscellaneous metal mines, n.e.s.	129.0	116.1	85.8	137.3	139.3	145.6	137.1	129.3
4:02	Mineral fuels	164.3	180.0	177.7	176.9	181.5	196.2	197.5	203.7
061	Coal mines	96.6	93.3	62.6	127.6	132.7	147.1	129.7	145.8
064	Crude petroleum and natural gas	176.1	195.0	197.6	185.4	190.0	204.7	209.2	213.7
4:03	Non-metal mines except coal mines	196.1	221.6	231.0	263.7	254.1	221.7	180.5	230.6
071	Asbestos mines	124.9	138.0	146.1	156.1	161.9	150.1	144.2	158.1
5	MANUFACTURING	159.4	168.5	163.6	171.4	171.5	175.0	154.0	161.3
5:01-07;10-11; 18-20	NON-DURABLE MANUFACTURING	143.9	152.0	155.7	153.7	157.1	158.5	145.6	154.1
5:01	Foods and beverages	139.8	143.4	163.7	140.4	148.1	159.7	155.2	171.0
101;103	Meat products	138.2	136.3	134.9	141.8	140.0	134.9	141.7	144.0
105;107	Dairy products	137.0	141.0	171.4	137.6	162.9	183.4	165.3	168.5
123-125	Grain mills	125.7	130.1	129.2	138.2	150.3	145.1	137.3	142.6
128;129	Bakery products	106.8	106.2	110.0	102.6	106.3	110.4	105.1	106.9
131-139	Other food processors	153.0	159.7	160.6	160.1	163.7	164.5	148.0	164.0
141-147	Beverage manufacturers	155.4	168.9	199.8	173.3	172.4	202.6	168.8	203.8
141	Soft drink manufacturers	169.4	188.1	254.8	189.6	197.3	228.3	245.1	263.7
143	Distilleries	175.9	193.9	212.4	187.1	173.6	210.3	102.0	196.1
145	Breweries	125.2	131.3	148.1	148.8	152.6	178.6	169.2	167.2
5:02	Tobacco products industries	119.1	121.7	107.8	135.4	143.1	143.4	78.9	124.5
5:03	Rubber industries	137.3	153.7	111.5	152.2	160.4	171.7	135.2	121.1
5:04	Leather industries	113.0	108.6	111.7	101.4	96.2	99.6	74.5	104.8
174	Shoe factories	115.2	109.1	116.7	102.2	93.7	99.8	66.9	106.0
5:05	Textile industries	175.0	184.6	180.6	188.7	186.6	187.9	150.9	170.5
183	Cotton yarn and cloth mills	103.7	109.1	101.0	105.5	110.5	96.2	65.7	89.2
201	Synthetic textile mills	241.0	258.5	252.3	277.5	259.0	264.4	216.4	245.9
5:06	Knitting mills	136.7	141.3	145.4	135.1	136.3	132.7	127.0	136.4
5:07	Clothing industries	122.4	122.0	128.0	117.0	119.3	120.0	110.8	126.0
5:10	Paper and allied industries	136.7	152.0	154.6	153.2	154.8	147.7	137.3	135.6
271	Pulp and paper mills	135.1	152.0	154.6	154.6	155.3	146.0	135.6	132.1
273;274	Paper box and bag manufacturers and other paper converters	142.4	151.6	152.6	149.8	153.1	152.6	145.2	148.9
5:11	Printing, publishing and allied industries	138.0	144.8	143.8	149.0	154.0	153.1	139.3	142.3
5:18	Petroleum and coal products industries	143.2	149.0	163.0	141.6	149.5	158.4	161.1	168.3

TABLE 2. Indexes of Industrial Production, without Seasonal Adjustment - Concluded

(1961=100)

S.I.C.	Industry or industry group	Annual averages		Without seasonal adjustment						
		1968	1969	1969	1970					
				Aug.	Apr.	May	June	July	Aug.	
NON-DURABLE MANUFACTURING - Concluded:										
5:19	Chemical and chemical products industries	165.2	172.3	159.2	189.0	186.1	178.3	161.6	161.3	
374	Manufacturers of pharmaceuticals and medicines	195.7	204.1	186.8	242.8	219.2	200.2	233.5		
375	Paint and varnish manufacturers	126.6	130.0	135.9	139.7	148.3	155.7	131.3	128.2	
376	Manufacturers of soap and cleaning compounds	144.3	148.9	127.1	190.3	143.1	135.7	97.7	129.3	
378	Manufacturers of industrial chemicals ...	180.9	189.1	170.4	204.3	201.3	192.0	164.3	159.2	
5:20	Miscellaneous manufacturing industries	161.8	181.5	186.1	184.6	189.1	188.8	181.5	191.7	
5:08-09;12-17	DURABLE MANUFACTURING	178.4	188.7	173.2	193.1	189.9	195.2	164.2	170.2	
5:08	Wood industries	143.9	146.6	151.0	146.4	132.3	138.5	132.0	143.1	
251	Sawmills and planing mills	151.7	154.5	159.9	158.4	139.1	147.5	140.7	153.1	
252	Veneer and plywood mills	154.7	155.7	151.4	159.8	137.9	134.6	123.0	137.0	
5:09	Furniture and fixture industries	152.9	161.7	168.9	144.2	143.9	146.5	142.2	152.0	
5:12	Primary metal industries	153.0	152.9	119.8	173.8	166.7	174.2	149.6	153.4	
291	Iron and steel mills	169.7	166.6	111.0	194.0	184.2	198.6	169.8	180.6	
292	Steel pipe and tube mills	174.4	159.0	132.4	210.2	167.7	186.7	145.9	185.6	
294	Iron foundries	139.4	139.9	115.9	126.8	123.6	105.1	79.4	92.7	
295	Smelting and refining	123.7	125.0	108.6	144.6	144.1	145.9	127.7	115.1	
5:13	Metal fabricating industries (except machinery and transportation equipment industries)	162.9	169.9	169.3	167.8	170.6	173.5	159.6	170.4	
301	Boiler and plate works	171.8	177.1	175.0	170.3	178.6	180.1	171.2	179.8	
302	Fabricated structural metal industry	152.7	169.0	182.1	173.9	181.0	194.5	178.9	191.4	
303	Ornamental and architectural metal industry	143.5	149.4	156.0	141.5	143.9	148.4	145.3	147.6	
304	Metal stamping, pressing and coating industry	171.9	179.6	182.2	172.1	169.8	179.7	167.0	181.8	
305	Wire and wire products manufacturers	165.4	159.9	135.6	166.3	180.1	167.5	136.7	154.9	
306	Hardware, tool and cutlery manufacturers	181.6	195.2	190.3	202.8	197.5	191.6	175.8	178.0	
5:14	Machinery industries (except electrical machinery)	198.7	215.5	215.4	223.0	213.3	219.5	211.1	209.8	
5:15	Transportation equipment industries	243.1	265.7	206.0	281.7	285.4	289.3	184.1	183.0	
321	Aircraft and parts manufacturers	142.4	136.6	133.8	126.5	121.3	117.2	102.8	102.8	
323;324	Motor vehicle and truck body and trailer manufacturers	322.4	369.2	217.1	431.9	440.8	445.4	199.4	167.7	
325	Motor vehicle parts and accessories manufacturers	242.9	253.4	251.6	230.2	236.1	251.4	225.8	271.7	
326	Railroad rolling stock industry	249.0	265.3	278.2	256.9	273.5	234.6	256.7	274.4	
327	Shipbuilding and repair	164.0	170.4	167.6	157.0	150.7	157.4	154.8	165.8	
5:16	Electrical products industries	192.0	210.6	209.8	203.7	195.7	197.3	175.5	188.1	
332	Manufacturers of major appliances (electric and non-electric)	182.9	199.2	179.3	176.3	143.0	158.1	104.8	150.6	
334	Manufacturers of household radio and television receivers	230.4	271.1	275.6	206.1	196.4	189.1	98.4	169.1	
335	Communications equipment manufacturers ..	238.4	260.4	263.1	265.5	263.1	260.2	247.8	246.5	
336	Manufacturers of electrical industrial equipment	175.2	185.7	184.8	184.8	183.4	184.8	182.2	175.8	
5: 17	Non-metallic mineral products industries ..	139.1	142.8	160.8	126.9	133.2	147.4	145.5	151.1	
341	Cement manufacturers	121.2	121.9	164.1	109.9	124.3	140.5	154.8	156.4	
348	Ready-mix concrete manufacturers	173.4	171.3	222.7	121.8	156.3	197.2	197.3	200.5	
356	Glass and glass products manufacturers ..	173.4	174.0	178.8	168.8	166.6	176.0	168.5	177.1	
7:04	ELECTRIC POWER, GAS AND WATER UTILITIES	174.4	190.4	162.0	212.3	191.8	183.1	171.7	174.4	
572	Electric power	173.6	189.3	172.2	204.7	195.5	192.0	183.4	186.5	
574	Gas distribution	211.4	236.7	114.2	313.9	204.3	154.7	117.3	119.2	

REAL DOMESTIC PRODUCT



Real Domestic Product*, July 1970

Canada's index of real domestic product, seasonally adjusted, increased by 0.4% in July. The increase resulted from a 1.1% gain in output of the service-producing group of industries, as output of the goods-producing group declined by 0.5%.

No clear pattern has been established by movements of RDP and its components during recent months. The index shows increases in January and February (continuing the upward trend of the latter part of 1969); a significant drop in March; a moderate rise in April; declines in May and June and the small increase in July -- which brought the index back to its level of December 1969.

As a group, the service-producing industries more than recovered in July from losses in June. Trade rose strongly with wholesale merchants overcoming their sharp drop in June (which followed their large increases in April and May). Retail trade also reversed its June decline, but still remained below the output levels reached at the beginning of the year.

The output of transportation, storage and communication (largely dominated by transportation) continued its increase in July. Air transport maintained its almost unbroken advance. Railway transport increased only fractionally, far from recovering from sharp drops earlier in the year. Water transport also rose in July (the B.C. towboat strike had been settled), but most other types of transport decreased. Storage was also up noticeably due to large increases in receipts and shipments of grain. In the communication component, the post office industry, affected by the labour dispute, continued to decline.

The group of goods-producing industries experienced its third consecutive monthly decline in July, but the combinations of individual industries which accounted for the declines were different in each month. In May, the set-back arose mainly from substantial declines in manufacturing, construction and forestry, which outweighed a gain in agriculture. The drop in June came chiefly from the continued decline in construction and forestry and a drop in agriculture. In July, agriculture and manufacturing were the only major goods-producing industries which declined. As a result of the May, June and July decreases, the index of output for the goods-producing industries was back at its strike-affected levels of July and August of 1969.

The July decrease in manufacturing came entirely from a drop in output of durables. This, in turn, was accounted for mostly by declines in the primary metal, metal fabricating and machinery industries.

In agriculture, the July drop was due mostly to decreases in poultry, cattle and calf production.

After significant drops in May and June, the index for construction increased in July -- only the second increase in eight months. This new strength came almost entirely from residential construction, as output movements in other types of construction were largely offsetting. The estimate of multiple housing units put in place sharply reversed its downward movement of May and June (reflecting the increase in low-income housing starts financed by CMHC) while output of single housing units increased slightly.

Forestry output was up in July, reflecting chiefly a recovery from the towboat strike in British Columbia which affected output in May and June. However, the level of production in this industry was still much lower than during the first four months of the year.

* Real Domestic Product movements may not always coincide with the constant price gross national expenditure data in the quarterly national income and expenditures accounts due to conceptual and statistical differences. For example, factor costs (rather than market prices) are used in calculating RDP and domestic boundaries rather than national boundaries.

Index of Real Domestic Product**
(1961=100)

(Seasonally Adjusted)

1970	Real Domestic Product	Agriculture	Goods-producing Industries	Commercial Industries
January	156.2	127.2	163.7	157.1
February	156.9	129.1	165.6	157.7
March	155.5	136.6	163.0	156.0
April	156.6	133.2	163.7	157.0

** The agriculture indexes and affected aggregates have now been revised in light of the July preliminary estimates of crop and June livestock surveys. No other indexes for the first four months of 1970 have been revised.

TABLE 3. Seasonally Adjusted Indexes of Real Domestic Product, by months

(1961=100)

S.I.C.	Industry or industry group	1961 percentage weights	Seasonally Adjusted					
			Feb.	Mar.	Apr.	May	June	July
	REAL DOMESTIC PRODUCT	100.000	156.9	155.5	156.6	156.2	155.2	155.8
1	AGRICULTURE	4.557	129.1	136.6	133.2	145.1	136.3	124.5
2	FORESTRY	1.257	153.8	150.5	152.5	129.8	119.8	133.5
3	FISHING AND TRAPPING262	103.1	99.7	92.4	90.0	74.1	97.3
4	MINES (including Milling), QUARRIES AND OIL WELLS	4.298	174.3	170.6	164.2	166.6	170.6	171.1
5	MANUFACTURING	24.741	171.9	168.1	170.0	167.5	167.5	165.9
5:01-07;10-11; 18-20	NON-DURABLE MANUFACTURING	13.608	154.8	152.8	154.8	155.0	153.2	153.2
5:08-09;12-17	DURABLE MANUFACTURING	11.133	192.9	186.7	188.6	182.8	185.0	181.6
6	CONSTRUCTION INDUSTRY	5.840	148.0	143.0	145.4	137.1	132.7	137.7
7:04	ELECTRIC POWER, GAS AND WATER UTILITIES	2.812	203.9	203.0	206.4	202.7	205.1	206.3
7	TRANSPORTATION, STORAGE AND COMMUNICATION ...	9.985	165.8	163.4	164.2	163.6	164.4	165.8
7:01	Transportation	7.039	166.2	163.8	163.9	162.3	163.4	164.6
501;502	Air Transport423	311.6	325.6	324.6	338.1	335.4	347.9
506	Railway transport	2.969	163.6	157.5	161.1	156.4	155.6	156.3
508	Bus transport, interurban and rural097	180.8	174.4	175.9	169.9	166.2	163.6
509	Urban transit systems348	105.7	102.7	107.6	98.3	103.1	98.8
515	Pipeline transport475	251.2	249.0	236.3	234.9	251.3	246.6
7:02	Storage363	122.5	122.9	121.5	125.3	125.5	135.2
524	Grain elevators273	115.7	116.2	113.5	118.0	119.9	133.4
7:03	Communication	2.583	170.8	168.2	171.0	172.4	172.7	173.5
8	TRADE	12.721	145.1	144.1	147.5	149.7	145.7	151.1
8:01	WHOLESALE TRADE	4.788	146.2	144.9	151.0	155.2	147.2	156.9
..	Wholesale Merchants	3.449	141.6	138.5	145.0	150.2	141.7	151.0
8:02	RETAIL TRADE	7.933	144.4	143.6	145.3	146.4	144.7	147.8
..	Food stores	1.530	138.5	139.4	138.6	137.8	134.9	141.9
..	Department stores	1.160	150.8	145.8	157.9	165.6	160.3	158.1
..	General stores232	120.9	119.7	120.3	123.8	121.9	126.2
..	Variety stores300	155.7	151.2	133.9	148.2	143.2	141.9
..	Motor vehicle dealers918	144.3	153.2	155.5	157.4	162.2	162.9
..	Clothing stores503	129.8	128.5	127.0	129.9	126.3	127.4
..	Shoe stores118	121.9	112.2	117.9	118.9	115.6	117.1
..	Hardware stores164	127.1	127.2	125.3	136.3	127.2	128.5
..	Furniture, television, radio and appliance stores336	136.1	132.9	136.2	133.8	133.3	149.1
..	Drug stores341	163.5	161.0	156.6	164.6	165.0	166.8
9	FINANCE, INSURANCE AND REAL ESTATE	12.013	141.9	141.9	142.2	143.2	143.4	143.7
10	COMMUNITY, BUSINESS AND PERSONAL SERVICE INDUSTRIES	13.789	164.4	165.4	166.4	167.0	166.6	167.2
10:01	Education and related services	3.527	211.7	214.2	216.7	219.2	221.7	224.3
10:02	Health and welfare services	3.563	146.0	146.5	146.4	147.2	147.1	147.6
10:04	Motion picture and recreational services389	158.5	164.0	162.8	166.5	170.2	162.8
10:05	Services to business management	1.643	171.3	171.8	173.8	169.8	168.4	166.7
10:06	Personal services	3.623	128.9	128.7	128.5	129.1	127.2	128.1
875	Hotels, restaurants and taverns	2.326	132.7	133.0	132.8	133.7	130.0	131.0
11	PUBLIC ADMINISTRATION AND DEFENCE	7.725	124.7	125.4	126.5	126.5	127.5	127.5
	SPECIAL INDUSTRY INDEXES:							
	Real domestic product less agriculture	95.443	158.2	156.5	157.7	156.7	156.1	157.3
1-6;7:04	Goods-producing industries	43.767	165.6	163.0	163.7	161.7	160.4	159.6
2-6;7:04	Goods-producing industries less Agriculture	39.210	169.9	166.1	167.2	163.7	163.2	163.7
7:01-03;8-11	Service-producing industries	56.233	150.0	149.7	151.1	151.8	151.1	152.8
(1)	Commercial industries	84.355	157.7	156.0	157.0	156.4	155.1	155.7
(1)	Commercial industries less Agriculture	79.798	159.4	157.1	158.4	157.0	156.2	157.5
(1)	Non-commercial industries	15.645	152.2	153.3	154.3	155.0	155.5	156.2
4;5;7:04	Index of Industrial Production	31.851	175.1	171.5	172.4	170.5	171.2	170.2

(1) The non-commercial industry group includes the following industries (S.I.C. code shown in brackets): Highway and bridge maintenance (516), Water systems and other utilities (576-9), Hospitals (821), Welfare organizations (828), Religious organizations (831), Private households (873), Education and related services (10-1), Miscellaneous services (10-7), Public administration and defence (11); all other industries are considered to be commercial.

TABLE 4. Indexes of Real Domestic Product, without Seasonal Adjustment, by months.

(1961=100)

S.I.C.	Industry or industry group	Without seasonal adjustment						
		Annual averages		1969			1970	
		1968	1969	July	Mar.	Apr.	May	June
	REAL DOMESTIC PRODUCT	145.4	152.8	145.5	150.3	156.3	156.9	155.4
1	AGRICULTURE	133.5	145.2	40.8	83.5	154.3	113.5	27.3
2	FORESTRY	132.6	138.9	143.1	143.9	115.0	113.4	147.4
3	FISHING AND TRAPPING	116.0	104.7	189.8	61.8	52.1	105.6	105.3
4	MINES (including Milling), QUARRIES AND OIL WELLS	152.7	149.8	134.7	169.4	163.4	170.7	173.7
5	MANUFACTURING	159.4	168.5	157.3	167.6	171.4	171.8	175.1
5:01-07;10-11; 18-20	NON-DURABLE MANUFACTURING	143.9	152.0	145.9	151.0	153.7	157.1	159.1
5:08-09;12-17	DURABLE MANUFACTURING	178.4	188.7	171.3	188.0	193.1	189.9	194.5
6	CONSTRUCTION INDUSTRY	149.7	153.9	172.0	118.1	132.6	139.0	150.5
7:04	ELECTRIC POWER, GAS AND WATER UTILITIES ...	174.4	190.4	159.5	223.7	212.3	191.8	183.2
7	TRANSPORTATION, STORAGE AND COMMUNICATION	150.2	156.8	158.7	160.1	165.6	167.9	173.3
7:01	Transportation	153.0	157.9	163.1	159.5	166.9	169.5	175.6
501;502	Air transport	248.5	277.3	372.2	295.6	290.2	321.2	386.3
506	Railway transport	156.1	155.6	153.9	165.2	174.9	171.8	171.2
508	Bus transport, interurban and rural ...	157.3	166.2	219.4	143.5	160.2	158.5	178.9
509	Urban transit systems	110.4	108.4	99.1	105.5	106.1	98.3	103.1
515	Pipeline transport	185.6	213.9	193.1	257.9	235.0	227.5	237.6
7:02	Storage	107.6	113.8	132.1	108.8	114.4	129.6	141.5
524	Grain elevators	101.2	105.6	129.2	100.1	105.4	124.9	139.9
7:03	Communication	148.5	159.7	150.4	168.9	169.2	168.8	171.6
8	TRADE	140.1	146.0	137.9	138.8	147.0	155.4	150.5
8:01	WHOLESALE TRADE	138.9	146.1	137.2	147.7	153.3	167.6	151.9
..	Wholesale Merchants	135.9	142.3	136.4	140.1	149.0	167.0	150.7
8:02	RETAIL TRADE	140.8	145.9	138.4	133.5	143.2	148.0	149.6
..	Food stores	128.2	133.1	127.4	137.3	138.1	140.0	137.8
..	Department stores	141.0	152.3	134.6	127.6	148.7	153.0	152.7
..	General stores	113.8	110.9	114.8	100.8	116.7	126.3	131.5
..	Variety stores	175.1	171.2	165.1	114.2	116.5	140.3	150.9
..	Motor vehicle dealers	164.1	171.3	161.2	165.4	178.5	189.4	192.2
..	Clothing stores	121.0	125.0	111.8	112.0	117.0	128.3	136.6
..	Shoe stores	122.2	120.3	112.0	88.8	126.2	119.0	122.2
..	Hardware stores	132.5	131.8	142.2	96.3	109.0	153.1	149.8
..	Furniture, television, radio and appliance stores	142.8	146.8	153.0	114.5	134.5	129.8	130.7
..	Drug stores	155.6	161.9	153.0	154.7	150.5	157.5	163.7
9	FINANCE, INSURANCE AND REAL ESTATE	130.6	136.7	138.7	141.0	141.6	143.5	144.8
10	COMMUNITY, BUSINESS AND PERSONAL SERVICE INDUSTRIES	144.1	156.5	160.9	163.3	164.5	167.2	169.5
10:01	Education and related services	167.1	192.9	193.4	214.2	216.7	219.2	221.7
10:02	Health and welfare services	132.7	139.1	141.0	145.8	146.0	147.3	148.1
10:04	Motion picture and recreational services	151.1	164.1	196.6	149.3	157.7	172.8	186.0
10:05	Services to business management	155.6	169.6	174.5	169.2	171.3	170.5	171.8
10:06	Personal services	123.4	127.2	134.8	125.1	124.6	128.9	132.8
875	Hotels, restaurants and taverns	127.8	131.8	142.5	127.8	126.9	133.1	138.0
11	PUBLIC ADMINISTRATION AND DEFENCE	120.1	122.3	127.3	123.2	123.7	126.7	131.2
	SPECIAL INDUSTRY INDEXES:							
	Real domestic product less agriculture	145.9	153.1	150.5	153.5	156.4	158.9	161.6
1-6;7:04	Goods-producing industries	154.7	162.5	144.9	154.7	164.0	160.5	155.6
2-6;7:04	Goods-producing industries less Agriculture	157.1	164.5	157.0	163.0	165.1	165.9	170.5
7:01-03;8-11	Service-producing industries	138.1	145.2	145.9	146.9	150.3	154.0	155.3
(1)	Commercial industries	147.1	154.2	144.9	150.1	157.0	157.2	155.0
(1)	Commercial industries less Agriculture	147.9	154.8	150.9	153.9	157.1	159.7	162.2
(1)	Non-commercial industries	135.9	144.8	148.5	151.4	152.4	155.2	158.0
4;5;7:04	Index of Industrial Production	159.8	167.9	154.5	172.8	174.0	173.5	175.6

(1) The non-commercial industry group includes the following industries (S.I.C. code shown in brackets): Highway and bridge maintenance (516), Water systems and other utilities (576-9), Hospitals (821), Welfare organizations (828), Religious organizations (831), Private households (873), Education and related services (10-1), Miscellaneous services (10-7), Public administration and defence (11); all other industries are considered to be commercial.

TABLE 5. Seasonally Adjusted Indexes of Real Domestic Product, by quarters

(1961=100)

S.I.C.	Industry or industry group	Seasonally adjusted						
		1961 percentage weights	1969				1970	
			I	II	III	IV	I	II
	REAL DOMESTIC PRODUCT	100.000	152.0	151.8	152.0	155.0	156.2	156.0
1	AGRICULTURE	4.557	147.0	149.5	139.8	146.7	131.0	138.2
2	FORESTRY	1.257	135.2	144.3	133.1	146.2	153.0	134.0
3	FISHING AND TRAPPING262	117.6	109.6	103.2	108.3	104.7	85.5
4	MINES (including Milling), QUARRIES AND OIL WELLS	4.298	159.4	148.5	138.0	153.5	171.8	167.1
4:01	Metal mines	2.463	147.0	129.2	105.6	125.1	150.3	149.5
4:02	Mineral fuels	1.030	176.2	171.2	180.3	192.1	206.5	192.3
4:03	Non-metal mines except coal mines385	208.5	214.0	223.2	240.6	251.0	241.7
5	MANUFACTURING	24.741	168.1	168.8	167.8	169.3	169.8	168.3
5:01-07;10-11; 18-20	NON-DURABLE MANUFACTURING	13.608	150.6	150.7	153.0	153.7	154.1	154.3
5:01	Foods and beverages	3.547	144.2	141.7	144.0	143.8	147.9	146.5
5:02	Tobacco products industries233	123.1	121.5	119.5	122.6	118.7	131.1
5:03	Rubber industries411	148.9	156.9	151.4	157.6	156.6	159.9
5:04	Leather industries293	112.9	111.6	108.9	101.6	97.6	98.1
5:05	Textile industries904	186.8	192.2	182.5	176.8	183.4	185.8
5:06	Knitting mills218	141.3	142.6	141.5	140.0	141.6	135.9
5:07	Clothing industries854	121.8	122.9	121.5	121.7	121.5	120.7
5:10	Paper and allied industries	2.675	148.8	149.3	153.4	156.5	153.9	149.9
5:11	Printing, publishing and allied industries	1.353	140.9	142.0	148.2	148.3	140.5	147.1
5:18	Petroleum and coal products industries583	149.9	139.7	153.2	153.1	156.6	158.6
5:19	Chemical and chemical products industry ...	1.682	171.0	170.6	174.3	173.5	175.9	179.0
5:20	Miscellaneous manufacturing industries855	172.8	178.4	183.0	191.4	188.9	188.7
5:08-09;12-17	DURABLE MANUFACTURING	11.133	189.6	190.9	185.9	188.3	189.1	185.5
5:08	Wood industries	1.117	145.6	151.0	141.3	148.5	147.0	132.6
5:09	Furniture and fixture industries448	159.6	161.2	162.8	163.1	156.8	147.7
5:12	Primary metal industries	2.256	162.3	165.4	137.5	146.3	169.7	164.8
5:13	Metal fabricating industries (except machinery and transportation equipment industries)	1.857	170.5	170.6	168.5	170.1	169.2	169.1
5:14	Machinery industries (except electrical machinery)995	210.7	213.9	216.5	220.8	222.0	218.6
5:15	Transportation equipment industries	2.001	266.4	259.8	269.4	267.3	251.7	256.9
5:16	Electrical products industries	1.572	206.5	213.0	212.4	210.5	207.8	201.7
5:17	Non-metallic mineral products industries ..	.887	142.2	143.3	143.7	141.8	138.5	131.1
6	CONSTRUCTION INDUSTRY	5.840	155.3	153.7	154.4	152.5	146.5	138.4
7:04	ELECTRIC POWER, GAS AND WATER UTILITIES	2.812	185.0	187.1	192.9	196.6	203.0	204.8
572	Electric power	2.270	184.0	187.1	190.8	195.2	202.8	204.2
574	Gas distribution336	228.3	224.1	246.8	247.8	248.8	254.1
7	TRANSPORTATION, STORAGE AND COMMUNICATION	9.985	157.7	150.5	153.4	160.2	165.2	164.0
7:01	Transportation	7.039	160.0	150.2	153.6	160.4	166.3	163.2
501;502	Air Transport423	294.6	230.9	287.8	294.2	310.1	332.7
506	Railway transport	2.969	157.4	148.9	143.3	154.8	164.5	157.7
508	Bus transport, interurban and rural097	169.9	165.9	159.2	174.1	177.5	170.7
509	Urban transit systems348	114.8	105.2	105.3	108.2	103.5	103.0
515	Pipeline transport475	203.0	195.0	218.7	238.4	252.6	240.8
7:02	Storage363	110.8	113.6	117.8	113.8	120.2	124.1
524	Grain elevators273	102.6	105.0	111.3	104.8	112.8	117.1
7:03	Communication	2.583	158.1	156.4	157.7	166.5	168.5	172.0

TABLE 5. Seasonally Adjusted Indexes of Real Domestic Product by quarters - Concluded
(1961=100)

S.I.C.	Industry or industry group	Seasonally adjusted						
		1961 percentage weights	1969				1970	
			I	II	III	IV	I	II
8	TRADE	12.721	144.3	144.8	147.5	147.2	145.8	147.6
8:01	WHOLESALE TRADE	4.788	141.8	144.7	149.4	148.6	146.8	151.1
..	Wholesale Merchants	3.449	138.8	140.5	145.6	144.7	141.2	145.6
8:02	RETAIL TRADE	7.933	145.8	144.9	146.3	146.4	145.2	145.5
..	Food stores	1.530	132.0	132.6	132.9	134.9	138.6	137.1
..	Department stores	1.160	150.7	153.3	150.8	153.7	151.0	161.3
..	General stores232	112.6	109.7	110.6	110.9	119.2	122.0
..	Variety stores300	177.2	165.4	167.0	172.2	158.3	141.7
..	Motor vehicle dealers918	171.5	168.0	179.1	168.2	151.8	158.4
..	Clothing stores503	124.3	125.5	123.3	125.6	128.7	127.8
..	Shoe stores118	117.6	120.2	119.3	123.5	116.9	117.5
..	Hardware stores164	133.3	131.4	132.0	131.0	128.6	129.6
..	Furniture, television, radio and appliance stores336	144.6	145.6	151.1	146.4	137.8	134.4
..	Drug stores341	159.8	158.9	161.5	166.3	164.0	162.1
9	FINANCE, INSURANCE AND REAL ESTATE	12.013	133.9	135.9	137.4	139.6	141.6	143.0
10	COMMUNITY, BUSINESS AND PERSONAL SERVICE INDUSTRIES	13.789	152.0	154.6	157.8	161.4	164.4	166.6
10:01	Education and related services	3.527	182.9	188.9	195.9	203.8	211.7	219.2
10:02	Health and welfare services	3.563	136.6	138.3	139.5	142.2	146.1	146.9
10:04	Motion picture and recreational services389	158.3	163.0	171.4	162.0	160.7	166.5
10:05	Services to business management	1.643	167.4	168.4	170.5	172.2	171.9	170.7
10:06	Personal services	3.623	125.5	126.5	127.6	129.2	128.3	128.3
875	Hotels, restaurants and taverns	2.326	129.7	131.0	132.1	134.3	132.1	132.2
11	PUBLIC ADMINISTRATION AND DEFENCE	7.725	121.8	122.2	122.4	122.8	125.0	126.8
	SPECIAL INDUSTRY INDEXES:							
	Real domestic product less agriculture	95.443	152.2	151.9	152.6	155.4	157.4	156.8
1-6;7:04	Goods-producing industries	43.767	163.2	162.9	160.4	163.9	164.1	161.9
2-6;7:04	Goods-producing industries less Agriculture	39.210	165.1	164.5	162.8	165.8	168.0	164.7
7:01-03;8-11	Service-producing industries	56.233	143.3	143.2	145.5	148.0	150.0	151.3
(1)	Commercial industries	84.355	153.9	153.3	153.2	156.2	156.9	156.2
(1)	Commercial industries less Agriculture	79.798	154.3	153.6	153.9	156.7	158.4	157.2
(1)	Non-commercial industries	15.645	141.7	143.6	145.7	148.5	152.3	155.0
4;5;7:04	Index of Industrial Production	31.851	168.4	167.7	166.0	169.5	173.0	171.4

(1) The non-commercial industry group includes the following industries (S.I.C. code shown in brackets): Highway and bridge maintenance (516), Water systems and other utilities (576-9), Hospitals (821), Welfare organizations (828), Religious organizations (831), Private households (873), Education and related services (10-1), Miscellaneous services (10-7), Public administration and defence (11); all other industries are considered to be commercial.

TABLE 6. Indexes of Real Domestic Product, without Seasonal Adjustment, by quarters
(1961=100)

S.I.C.	Industry or industry group	Without seasonal adjustment							
		Annual averages		1969				1970	
		1968	1969	I	II	III	IV	I	II
	REAL DOMESTIC PRODUCT	145.4	152.8	143.0	150.8	162.8	154.4	148.2	156.2
1	AGRICULTURE	133.5	145.2	66.5	86.8	352.3	75.1	67.0	98.3
2	FORESTRY	132.6	138.9	126.2	133.5	152.1	143.6	144.1	125.3
3	FISHING AND TRAPPING	116.0	104.7	65.3	117.5	152.3	83.7	58.7	87.7
4	MINES (including Milling), QUARRIES AND OIL WELLS	152.7	149.8	154.7	150.4	138.2	155.9	167.6	169.3
4:01	Metal mines	142.6	126.7	139.9	133.8	105.8	127.4	143.3	155.0
4:02	Mineral fuels	164.3	180.0	185.1	164.7	177.9	192.3	216.5	184.9
4:03	Non-metal mines except coal mines	196.1	221.6	199.8	220.1	217.9	248.6	240.5	246.5
5	MANUFACTURING	159.4	168.5	164.7	173.0	164.9	171.4	166.2	172.8
5:01-07;10-11; 18-20	NON-DURABLE MANUFACTURING	143.9	152.0	146.1	153.1	153.6	155.2	149.5	156.6
5:01	Foods and beverages	139.8	143.4	125.0	144.7	159.3	144.6	128.4	149.2
5:02	Tobacco products industries	119.1	121.7	127.9	128.6	107.6	122.7	123.3	140.7
5:03	Rubber industries	137.3	153.7	154.1	159.0	131.1	170.6	162.1	161.4
5:04	Leather industries	113.0	108.6	120.4	112.4	100.9	100.9	103.8	99.0
5:05	Textile industries	175.0	184.6	186.4	194.5	175.3	182.0	182.8	188.5
5:06	Knitting mills	136.7	141.3	139.3	141.3	142.6	142.0	139.7	134.8
5:07	Clothing industries	122.4	122.0	124.0	120.7	122.8	120.4	123.7	118.8
5:10	Paper and allied industries	136.7	152.0	148.3	151.2	150.7	157.8	153.6	151.9
5:11	Printing, publishing and allied industries	138.0	144.8	139.1	146.8	142.5	151.0	138.6	152.0
5:18	Petroleum and coal products industries ..	143.2	149.0	152.9	132.2	156.3	154.6	159.7	149.8
5:19	Chemical and chemical products industry ..	165.2	172.3	174.1	178.1	164.9	172.3	179.4	186.2
5:20	Miscellaneous manufacturing industries ..	161.8	181.5	169.2	177.3	185.0	194.4	185.0	187.5
5:08-09;12-17	DURABLE MANUFACTURING	178.4	188.7	187.4	197.5	178.7	191.1	186.7	192.5
5:08	Wood industries	143.9	146.6	145.0	156.5	146.0	138.8	145.4	139.0
5:09	Furniture and fixture industries	152.9	161.7	154.8	157.9	166.1	168.1	152.0	144.7
5:12	Primary metal industries	153.0	152.9	164.1	172.2	131.2	143.9	171.7	171.5
5:13	Metal fabricating industries (except machinery and transportation equipment industries)	162.9	169.9	166.0	172.3	170.7	170.6	164.6	170.7
5:14	Machinery industries (except electrical machinery)	198.7	215.5	211.4	214.5	214.9	221.1	222.6	219.0
5:15	Transportation equipment industries	243.1	265.7	269.1	284.4	228.4	280.9	252.8	283.9
5:16	Electrical products industries	192.0	210.6	204.1	210.0	208.1	220.1	205.7	199.0
5:17	Non-metallic mineral products industries ..	139.1	142.8	119.7	148.5	158.8	144.1	116.9	135.9
6	CONSTRUCTION INDUSTRY	149.7	153.9	124.8	155.6	178.9	156.4	117.1	140.7
7:04	ELECTRIC POWER, GAS AND WATER UTILITIES	174.4	190.4	214.9	179.2	164.0	203.5	235.8	195.8
572	Electric power	173.6	189.3	200.5	180.9	173.6	202.2	221.4	197.5
574	Gas distribution	211.4	236.7	366.7	200.1	121.5	258.6	398.2	224.3
7	TRANSPORTATION, STORAGE AND COMMUNICATION ...	150.2	156.8	150.0	155.0	159.6	162.5	157.5	168.9
7:01	Transportation	153.0	157.9	150.0	157.3	162.9	161.6	156.3	170.7
501;502	Air transport	248.5	277.3	253.3	234.2	368.3	253.5	266.8	332.6
506	Railway transport	156.1	155.6	153.7	163.2	146.1	159.4	160.9	172.6
508	Bus transport, interurban and rural	157.3	166.2	136.9	161.0	214.1	152.6	143.1	165.8
509	Urban transit systems	110.4	108.4	117.0	104.8	101.5	110.3	105.4	102.5
515	Pipeline transport	185.6	213.9	214.9	189.4	208.7	242.7	263.8	233.4
7:02	Storage	107.6	113.8	100.2	114.5	120.6	119.7	109.4	128.5
524	Grain elevators	101.2	105.6	90.7	106.7	113.2	111.8	100.8	123.4
7:03	Communication	148.5	159.7	157.2	154.4	156.3	171.0	167.6	169.8

TABLE 6. Indexes of Real Domestic Product, without Seasonal Adjustment, by quarters - Concluded
(1961=100)

S.I.C.	Industry or industry group	Without seasonal adjustment							
		Annual averages		1969				1970	
		1968	1969	I	II	III	IV	I	II
8	TRADE	140.1	146.0	132.0	148.0	142.1	161.8	133.8	151.0
8:01	WHOLESALE TRADE	138.9	146.1	135.5	150.1	146.4	152.2	141.3	157.6
..	Wholesale Merchants	135.9	142.3	128.1	149.2	146.3	145.5	131.6	155.6
8:02	RETAIL TRADE	140.8	145.9	129.9	146.7	139.5	167.6	129.3	147.0
..	Food stores	128.2	133.1	128.2	134.1	129.3	140.9	134.7	138.6
..	Department stores	141.0	152.3	119.1	143.6	143.0	203.5	119.0	151.5
..	General stores	113.8	110.9	92.9	111.9	114.2	124.5	98.7	124.8
..	Variety stores	175.1	171.2	121.5	159.9	160.9	242.5	106.3	135.9
..	Motor vehicle dealers	164.1	171.3	164.4	198.2	157.1	165.6	144.8	186.7
..	Clothing stores	121.0	125.0	104.7	125.1	112.6	157.7	108.2	127.3
..	Shoe stores	122.2	120.3	88.7	125.7	115.7	151.1	87.9	122.5
..	Hardware stores	132.5	131.8	98.7	139.2	139.2	150.4	95.1	137.3
..	Furniture, television, radio and appliance stores	142.8	146.8	128.9	142.6	147.3	168.2	122.7	131.6
..	Drug stores	155.6	161.9	157.7	154.7	155.9	179.4	161.8	157.3
9	FINANCE, INSURANCE AND REAL ESTATE	130.6	136.7	132.5	136.2	138.8	139.2	140.1	143.3
10	COMMUNITY, BUSINESS AND PERSONAL SERVICE INDUSTRIES	144.1	156.5	149.6	155.0	161.0	160.2	161.9	167.1
10:01	Education and related services	167.1	192.9	182.9	188.9	195.9	203.8	211.7	219.2
10:02	Health and welfare services	132.7	139.1	136.0	138.5	140.2	141.8	145.4	147.1
10:04	Motion picture and recreational services ..	151.1	164.1	144.5	168.9	188.0	155.2	146.9	172.2
10:05	Services to business management	155.6	169.6	164.4	169.2	174.4	170.3	169.0	171.2
10:06	Personal services	123.4	127.2	121.0	127.0	134.1	126.8	123.4	128.8
875	Hotels, restaurants and taverns	127.8	131.8	123.0	131.5	142.1	130.4	124.9	132.7
11	PUBLIC ADMINISTRATION AND DEFENCE	120.1	122.3	119.3	122.6	126.2	121.1	122.4	127.2
SPECIAL INDUSTRY INDEXES:									
	Real domestic product less agriculture	145.9	153.1	146.7	153.9	153.8	158.2	152.1	158.9
1-6;7:04	Goods-producing industries	154.7	162.5	149.7	158.4	183.2	158.6	152.7	160.0
2-6;7:04	Goods-producing industries less Agriculture ..	157.1	164.5	159.3	166.8	163.5	168.3	162.6	167.2
7:01-03;8-11	Service-producing industries	138.1	145.2	137.9	144.9	147.0	151.1	144.7	153.2
(1)	Commercial industries	147.1	154.2	143.7	152.1	165.5	155.7	147.8	156.4
(1)	Commercial industries less Agriculture	147.9	154.8	148.1	155.9	154.8	160.3	152.4	159.7
(1)	Non-commercial industries	135.9	144.8	139.7	143.8	148.4	147.5	150.3	155.2
4;5;7:04	Index of Industrial Production	159.8	167.9	167.8	170.5	161.2	172.1	172.5	174.3

(1) The non-commercial industry group includes the following industries (S.I.C. code shown in brackets): Highway and bridge maintenance (516), Water systems and other utilities (576-9), Hospitals (821), Welfare organizations (828), Religious organizations (831), Private households (873), Education and related services (10-1), Miscellaneous services (10-7), Public administration and defence (11); all other industries are considered to be commercial.

CATALOGUE No.

61-005

MONTHLY

System of National Accounts

Domestic Product by Industry

Index of Industrial Production (1961=100)

August 1970

ERRATUM

The second half of Table 6, on page 15, was omitted from the publication. It is attached.

2505-502

STATISTICS CANADA LIBRARY
BIBLIOTHÈQUE STATISTIQUE CANADA



1010546172