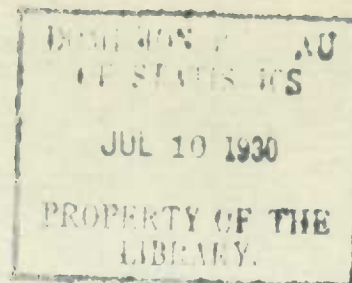


62 002

C1



CANADA

DEPARTMENT OF TRADE AND COMMERCE

DOMINION BUREAU OF STATISTICS

INTERNAL TRADE BRANCH

Vol. 8

No. 6

## PRICES & PRICE INDEXES

JUNE 1930

Wholesale Prices  
Retail Prices  
Security Prices  
Stocks  
Bonds  
Foreign Price Indexes

---

Published by Authority of the Hon. James Malcolm, M.P.,  
Minister of Trade and Commerce

♦ ♦ ♦

OTTAWA

1930

# TABLE OF CONTENTS

	Pages
1. Summary and analysis of the movement of Commodity Prices in Canada.....	1 - 4
2. Building and Construction Materials Index 1913=100.....	4
3. Summary Tables of Index Numbers of Commodity Prices (Canada) arranged according to (a) component material, (b) purpose, (c) origin.....	5
4. Detailed tables of Index Numbers arranged according to (a) component material, (b) purpose.....	6 - 8
5. Wholesale Prices of Important Commodities.....	9
6. Index Numbers of Retail Prices, Rents and Costs of Services...	10
7. Security Prices - Traders' and Investors' Indexes of Common Stocks - Preferred Stocks - Bonds - Mining Stocks.....	11 - 16
8. Sterling and New York Fund Quotations at Montreal, 1926-1930..	17
9. Stock Indexes - Standard Statistics Co. Inc.....	18
10. Review of World Price Movements.....	19 - 20
11. Tables of Foreign Index Numbers.....	21 - 28
12. Charts.....	29



Published by Authority of Hon. James Malcolm, M.P.,  
Minister of Trade and Commerce

DEPARTMENT OF TRADE AND COMMERCE  
DOMINION BUREAU OF STATISTICS - CANADA  
INTERNAL TRADE BRANCH

(Issued July 10th, 1930)

Dominion Statistician:	R. H. Coats, B.A., F.S.S. (Hon.), F.R.S.C.
Chief, Internal Trade Branch:	Herbert Marshall, B.A., F.S.S.

INDEX NUMBERS OF WHOLESALE PRICES  
JUNE, 1930.

The Dominion Bureau of Statistics index number of wholesale prices 1926=100, fell from 89.9 in May to 88.0 in June. 22 quotations were higher, 126 were lower, while 354 remained unchanged.

Vegetable Products fell from 85.3 to 83.0, due principally to lower prices for grains, flour, tea, and rubber. Animals and Their Products dropped from 103.3 to 98.8, reduced prices for steers, calves, milk, butter and eggs, more than offsetting gains made by hogs, lambs, and hides. Fibres, Textiles and Textile Products moved down from 83.0 to 82.1, due largely to price decreases for cotton, silk, hemp and jute which were of more consequence than the gain made by wool. Wood, Wood Products and Paper fell fractionally from 89.7 to 89.3, owing to easier prices for pine, hemlock, and fir. Iron and Its Products declined slightly from 91.6 to 91.3 because of the lower prices which obtained for automobile body plates, steel sheets, and scrap steel. Non-Ferrous Metals and Their Products were lower at 77.8 as against 80.6, both figures being appreciably less than at any time since the index was commenced in 1913. This was accounted for largely by reduced quotations for silver, copper, brass sheets, tin, and zinc. Non-Metallic Minerals and Their Products declined from 90.8 to 90.5, due chiefly to lower prices for fuel oil and cement. Chemicals and Allied Products moved down from 93.4 to 92.9, influenced by easier quotations for copper sulphate, calcium chloride, shellac and citric acid.

Consumers' Goods fell from 91.3 in May to 89.8 in June, due chiefly to reduced prices for flour, tea, foreign fruits, eggs, milk and butter.

Producers' Goods moved down from 87.1 to 85.2, owing to easier quotations for white pine, spruce, raw cotton, raw silk, copper, tin and silver.

Raw and Partly Manufactured Goods declined from 88.6 to 84.9. Lower prices for grains, tea, steers, milk, eggs, copper, tin and silver influenced the index more than gains in hides, raw sugar, and wool.

Fully and Chiefly Manufactured Goods fell from 89.1 to 87.6 because of weaker quotations for leather, butter, copper wire bars, brass, cement, and cotton yarn and thread.

Farm Products were lower at 86.4 as compared with 92.1, reduced prices for grains, steers, calves, milk, eggs, and wool being the main influences causing the decline.

RESUME OF IMPORTANT PRICE CHANGES: GRAINS.- A decline almost equal in severity to that of last November brought wheat prices to the lowest point since April of 1924. The general movement of the market was downward for the first few days, followed by a slight re-action, and then again downward very sharply, until another brief upturn checked the recession, in the closing days of the month. The strength apparent in the first week was supplied chiefly by Western Canada, where lack of moisture coupled with heavy drifting gave cause for grave concern. A probable reduction of 44,000,000 bushels in the Italian crop when compared with 1929, and bullish news from France and Jugo-Slavia also gave support to the market. The chronic inactivity of export trade was undisturbed by crop prospects however, and when heavy rains came to the prairie provinces towards the middle of the month, prices broke sharply, to bring cash wheat down 14¢ within a single week. To accentuate the decline, visible supplies of Canadian wheat began to increase materially, a very rare occurrence for this time of year. Export demand failed to be greatly strengthened by easier prices, and support from that direction continued indifferent until the final week.





The Canadian visible on June 20th was estimated at 128,444,213 bushels as against 119,592,239 bushels at the same time last year. Canadian exports of wheat and flour from August 1st, 1929 to May 31st, 1930, have amounted to 116,908,258 bushels, as against 311,818,121 bushels for the corresponding period of the crop year, 1928-1929.

No.1 Manitoba Northern cash wheat Ft. William and Pt. Arthur basis, dropped from \$1.08 in May to \$1.032 per bushel in June. No.2 Ontario wheat likewise declined from \$1.10 to \$1.081 per bushel.

Coarse grains, especially rye, were lower. No.3 C.W. barley fell from 44.9¢ to 39.3¢ per bushel, No.2 American yellow corn moved down from 92.9¢ to 91.2¢ per bushel; No.1 N.W.C. flax was \$2.12 as against \$2.19 per bushel in May; No.2 C.W. oats averaged 47.6¢ as compared with 49.9¢ per bushel in May; No.2 C.W. rye dropped from 62¢ to 53.8¢ per bushel.

MILLED PRODUCTS.- Flour prices dropped more sharply in June than for many months past, and even after the reductions had been made it was considered that the market was still in a very weak position. Flour remained on practically the same level as in June of 1929, while wheat prices were much lower. Manitoba spring No.1 patent flour averaged \$7.23 as against \$7.72 per 2-98's jute bag in May.

Although the market was weak, and rumors of price cutting indicative of very keen competition were current, no change occurred in the quotation given for rolled oats in 90 pound bags at Toronto. It remained at \$3.30.

Bran and shorts prices averaged appreciably lower than in May. Manitoba bran, ex track Montreal, declined from \$32.40 to \$27.21 per ton, while Manitoba shorts, selling on the same basis dropped from \$33.81 to \$29.21 per ton.

SUGAR.- Considered on a monthly basis, raw sugar prices scored the first advance of the year, in June. The feature among market news was the signing by President Hoover of the Smoot-Hawley tariff bill on June 17th, which placed a new duty of 2.00¢ per pound upon Cuban 96° test raw sugars and 2.50¢ per pound upon world 96° test raw sugars. Previously these duties had been 1.76¢ and 2.2¢ per pound. The new tariff had the immediate effect of checking imports of other than duty free sugars, and allowed U.S. Warehouse stocks of Cuban sugars to be fairly well disposed of. The Cuban crop was lately estimated at 4,661,429 tons as against 5,156,315 tons in 1929, and quiet optimism regarding the long run trend of prices from now on could be noted in trade reports.

Cuban 96° centrifugal raw sugar at New York advanced from \$1.438 to \$1.563 per cwt. C. and F. Standard granulated sugar at Montreal remained unchanged at \$4.65 per 100 pounds.

RUBBER.- This commodity fell to lower and lower levels during June. New records occurred repeatedly to stand only for a few days, before renewed liquidation drove prices still lower. The restriction program apparently has exerted very little effect upon shipments as yet, for stocks on hand reached new records in London and Liverpool, and U.S. imports continued to be relatively high. Crude rubber consumption in the United States for the first quarter of 1930 has been estimated at 101,610 tons, 19.7% above that for the last quarter of 1929, but 20.9% below consumption for the first quarter of 1929.

Ceylon ribbed smoked sheets at New York, fell from 14.6¢ to 12.3¢ per pound, while upriver fine Para averaged 14.4¢ as against 15.5¢ per pound in May.

COFFEE.- Coffee prices marked time, traders being hesitant to make commitments until the effect of the liquidation loan to the Defense Institute, could be determined. In the meantime no change of any account could be discerned in the statistical position of coffee. The U.S. visible supply at the middle of June was given as 1,221,041 bags, roughly 130,000 more than at the same time last year, but indicating a decline of 32,000 bags from the supplies estimated a week earlier.

Green Santos, green Rio and green Jamaica coffee at Toronto remained steady at 21¢, 18¢ and 20¢ respectively.

LIVE STOCK.- Trends were mixed in the field of livestock prices during June, but whereas the gains made for hogs proved to be very moderate, declines for cattle, calves and lambs were very abrupt. The prospect of moderate supplies continued to keep the hog market in a strong position. Cattle offerings in general showed noticeably poorer quality, and markets were affected also by the new U.S. tariff. Carry-overs



THE FIRST PART OF THE HISTORY OF THE  
LIFE OF THE LATE KING OF GREAT BRITAIN  
AND IRELAND CHARLES THE SECOND

BY JOHN BURNET  
OF THE SOCIETY OF THE APOSTOLICAL APOSTLES

IN TWO VOLUMES  
THE SECOND VOLUME

LONDON  
Printed by J. Sturges, in Pall-mall

1724

THE SECOND VOLUME

OF THE HISTORY OF THE  
LIFE OF THE LATE KING OF GREAT BRITAIN  
AND IRELAND CHARLES THE SECOND

BY JOHN BURNET  
OF THE SOCIETY OF THE APOSTOLICAL APOSTLES

IN TWO VOLUMES  
THE SECOND VOLUME

LONDON  
Printed by J. Sturges, in Pall-mall

1724

THE SECOND VOLUME

OF THE HISTORY OF THE  
LIFE OF THE LATE KING OF GREAT BRITAIN  
AND IRELAND CHARLES THE SECOND

BY JOHN BURNET  
OF THE SOCIETY OF THE APOSTOLICAL APOSTLES

IN TWO VOLUMES  
THE SECOND VOLUME



were not infrequent, with demand very narrow and selective. Early export demand steadied calf prices, but when this was removed markets softened appreciably. Lambs tended to be plain and light, while runs were affected by seasonal increases, which favoured a buyer's market.

Steers at Toronto fell from \$10.70 to \$9.47, and from \$10.71 to \$9.52 at Winnipeg. Good veal calves at Toronto averaged \$9.72 as against \$10.84 in May, and dropped even more sharply from \$11.54 to \$9.04 at Winnipeg. Bacon hogs rose from \$12.13 to \$12.42 at Toronto, and from \$11.15 to \$11.34 at Winnipeg. Good handyweight lambs at Toronto fell from \$14.63 to \$13.95.

HIDES.- There was little change in hide prices, but the market appeared firm. The only movement noted was for native steer packer hides which advanced from 13¢-14¢ to 13.5¢-15.5¢ per pound.

MILK.- Further reductions were made in milk quotations during June, more especially in eastern centres such as Montreal, Quebec, Toronto, and Hamilton, as well as in Regina and Edmonton. New prices ranged from 2¢ to 5¢ per gallon lower than previously.

BUTTER.- Quotations for creamery butter again averaged much lower, moving down commonly from 1¢ to 3¢ per pound. Storage holdings on June 1st were 10,798,828 pounds, which represented an increase of 31.9% within a month and of 245.66% when compared with June 1st, 1929. An average of No.1 creamery prints was reduced from 33.07¢ to 30.1¢ per pound at Montreal, and from 33.73¢ to 31.7¢ per pound at Toronto.

EGGS.- With the major part of the into storage movement complete and production on the wane, markets remained quiet throughout June. Considerable buying of seconds for breaking, helped to keep the market balanced more evenly than it otherwise would have been. Cold storage eggs on June 1st were 11,541,123 dozen, a decrease of 6.11% from last year. This reduction was due to lower holdings in the west, as Ontario and Quebec were ahead of their 1929 figures.

Fresh extras at Montreal averaged 35.9¢ as against 35.8¢ per dozen in May, but eased slightly at Toronto from 33.6¢ to 32.8¢ per dozen.

COTTON.- Cotton prices in June reached the lowest level recorded since March 1927. Among the bearish factors influencing the market were unfavourable statistics which showed the world's visible supply of cotton on June 27th to be 3,357,222 bales as compared with 2,324,000 bales a year ago. Fear that Farm Board might liquidate its 1,000,000 bales holdings together with outlook for another good crop also had a depressing effect upon the market. A favourable feature of the situation was the formation of the Cotton Stabilization Company with the intimation that it would take over the 1,000,000 bales of cotton from the market prior to the advent of the new crop.

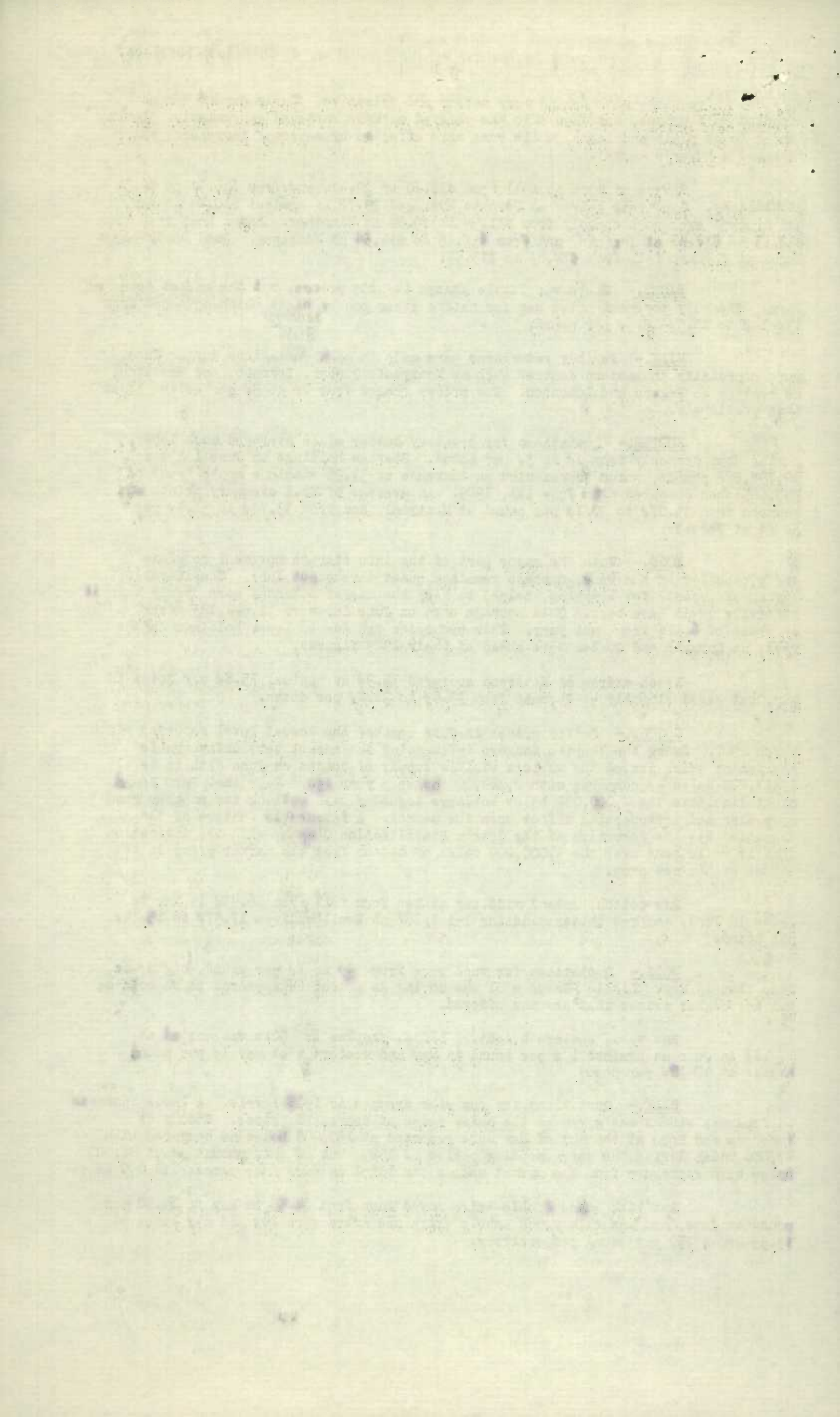
Raw cotton, upland middling at New York fell from 16.43¢ in May to 14.4¢ in June, and raw cotton middling 1-1 1/16" at Hamilton from 17.57¢ to 15.14¢ per pound.

WOOL.- Quotations for wool were from 1/2¢ to 1¢ per pound, higher in June than in May. Little fleece wool was moving as producers appeared to be holding out for higher prices than are now offered.

Raw wool, eastern bright, 1/4 blood, staples or 50's was quoted at 17-18¢ in June as against 17¢ per pound in May and western wool was 1¢ per pound higher at 17-18¢ per pound.

SILK.- Quotations for raw silk dropped to 1915 levels. A large increase in Japanese stocks was given as the chief cause of depressed prices. Stocks at Yokohama and Kobe at the end of May were reported at 130,000 bales as compared with 17,000 bales during the corresponding period of 1929, but of this amount about 28,000 bales were withdrawn from the market making the total in warehouse almost 112,000 bales.

Raw silk grand double extra moved down from \$4.55 in May to \$4.00 per pound in June, and raw silk crack double extra and extra were 70¢ and 65¢ lower at \$3.55 and \$3.30 per pound respectively.





**LUMBER AND PULP.**- Lumber trade conditions continued depressed. In British Columbia, production was said to have been cut to approximately 65% of normal capacity with no immediate effect observable. B.C. shingle production was given as less than 50% of average output. In eastern Canada, business remained very quiet, but relatively to other branches of industry, it was felt that lumber was holding its own.

Several reductions in white pine prices were noted. No.1 and 2 common, 1" thick, f.o.b. mill dropped from \$43.00 to \$42.00 per 1000 board feet, while "C" selects and better, 5/4" and thicker, fell from \$110.00 to \$100.00 per 1000 board feet. No.1 common fir timber 6"x6" - 12"x12" also declined from \$18.00 to \$17.00 per 1000 board feet f.o.b. mill.

Demand for groundwood pulp was reported to be very slack, but with selling pressure absent prices have been firmly maintained. Chemical pulp has not fared so well lately, and trade intimations stated that consumers were practically out of the market.

**IRON AND STEEL.**- Towards the latter part of the month, interest in forward requirements of pig iron picked up noticeably, while spot sales continued fair for small lots. Lack of buying interest was said to have caused reductions in some grades of scrap.

Structural steel fabricators were busier as the month progressed, but buyers appeared in no hurry to cover future requirements.

The following declines in steel prices were noted. Automobile body plates f.o.b. mill Pittsburgh fell from \$3.80 to \$3.60 per 100 pounds. Black steel sheets, No.24 U.S.G. f.o.b. Montreal dropped from \$3.50 to \$3.39 per 100 pounds, while No.10 U.S.G. quoted on the same basis were reduced from \$2.97 to \$2.87.

**TIN.**- Conditions obtaining in the tin market offered little that was optimistic for the immediate future. World's supplies for May reached a record of 40,000 tons and it was felt that further curtailment of production would be necessary to bring supplies back to normal. Reports indicate that the Malayan Chamber of Mines and The Federated Malay States government favour the proposal for the stoppage of tin mines for not less than two months, and there are indications that British and Dutch tin interests also favour the temporary shutting down of mines.

Tin ingots f.o.b. Toronto fell from 34<sup>3</sup>/<sub>4</sub>¢ in May to 32<sup>1</sup>/<sub>4</sub>¢ per pound in June.

**COPPER.**- Copper prices in the United States market reached the lowest level for nearly nine years in June, dropping from 13¢ at the beginning of the month to 11<sup>1</sup>/<sub>2</sub>¢, but then mounted to 12¢ per pound as June 19. This weakness was held to be due partly to the heavy May buying which placed consumers in a position to wait for low prices and partly to unfavourable May statistics. Stocks on hand on the American continent showed an increase of 7,652 tons of refined copper, and world production was also higher at 147,352 tons as compared with 144,298 tons in the previous month.

Electrolytic, domestic copper f.o.b. Montreal was quoted at \$14.28 as compared with \$14.84 per 100 pounds in May.

Prices for copper sulphate following the lead of the base metal fell from \$5.25 to \$5.00 per 100 pounds in 5 ton lots c.i.f. ocean ports.

**SHELLAC.**- Despite the fact that demand for shellac was better in June, prices of dry shellac T.M. fell from 27.15¢ to 25¢ per pound.

#### BUILDING AND CONSTRUCTION MATERIALS -1913=100

The following table giving indexes of building and construction costs on a 1913 base, is included in the monthly bulletin in addition to the same data on the base 1926=100, given on page 8.

	No. of price series	1929 Nov.	1929 Dec.	1930 Jan.	1930 Feb.	1930 Mar.	1930 Apr.	1930 May	1930 June
Building and Construction Materials	97	150.5	149.7	148.6	147.5	146.6	144.8	141.9	141.1
Lumber	27	146.0	145.7	144.1	142.6	140.7	139.4	136.1	134.1
Painters' Materials	11	185.4	182.2	177.5	174.6	175.1	175.3	165.4	164.9
Miscellaneous	59	146.3	145.7	145.7	145.5	145.3	142.4	141.5	141.8

INDEX FOR THE YEAR 1961  
The following is a list of the names of the persons who have been elected to the office of the President of the United States since the year 1789.

1789-1796: George Washington  
1797-1800: John Adams  
1801-1809: Thomas Jefferson  
1817-1825: James Monroe  
1829-1837: Andrew Jackson

1837-1845: Martin Van Buren  
1845-1849: Zachary Taylor  
1850-1853: Millard Fillmore  
1853-1861: Franklin Pierce  
1861-1869: Abraham Lincoln

1869-1877: Ulysses S. Grant  
1877-1881: Rutherford B. Hayes  
1881-1885: James A. Garfield  
1885-1893: Chester A. Arthur  
1893-1901: Grover Cleveland

1901-1909: William McKinley  
1909-1913: Theodore Roosevelt  
1913-1921: Woodrow Wilson  
1921-1923: Warren G. Harding  
1923-1929: Calvin Coolidge

1929-1933: Herbert Hoover  
1933-1945: Franklin D. Roosevelt  
1945-1953: Dwight D. Eisenhower  
1953-1961: John F. Kennedy  
1961-1969: Lyndon B. Johnson

1969-1977: Richard M. Nixon  
1977-1981: Jimmy Carter  
1981-1989: Ronald Reagan  
1989-1993: George H. W. Bush  
1993-2001: Bill Clinton

2001-2009: George W. Bush  
2009-2017: Barack Obama  
2017-2021: Donald Trump  
2021-Present: Joe Biden

The following is a list of the names of the persons who have been elected to the office of the Vice President of the United States since the year 1789.

1789-1796: John Adams  
1797-1800: Thomas Jefferson  
1801-1809: James Monroe  
1817-1825: Andrew Jackson  
1829-1837: Martin Van Buren

1837-1845: Zachary Taylor  
1845-1849: Millard Fillmore  
1850-1853: Franklin Pierce  
1853-1861: Abraham Lincoln  
1861-1869: Ulysses S. Grant



SUMMARY TABLES OF INDEX NUMBERS

	Price Series	June 1929	Mar. 1930	Apr. 1930	May 1930	June 1930
Total Index 502 Commodities	502	93.5	91.9	91.7	89.9	88.0
INDEX NUMBERS OF COMMODITIES CLASSIFIED ACCORDING TO THEIR CHIEF COMPONENT MATERIAL						
I. Vegetable Products, (grain, fruits, etc.)	124	84.9	85.0	86.5	85.3	83.0
II. Animals and Their Products	74	107.7	106.2	104.3	103.3	98.8
III. Fibres, Textiles & Textile Products	60	91.6	85.8	83.4	83.0	82.1
IV. Wood, Wood Products and Paper	44	94.0	91.8	91.4	89.7	89.3
V. Iron and Its Products	39	93.8	92.6	92.5	91.6	91.3
VI. Non-Ferrous Metals and Their Products	15	98.7	93.1	86.8	80.6	77.8
VII. Non-Metallic Minerals and Their Products	73	93.0	93.3	93.0	90.8	90.5
VIII. Chemicals and Allied Products	73	95.5	94.0	93.9	93.4	92.9
INDEX NUMBERS OF COMMODITIES CLASSIFIED ACCORDING TO PURPOSE						
I. Consumers' Goods	204	93.4	93.5	92.6	91.3	89.8
Food Beverages and Tobacco	116	96.8	100.3	99.7	98.3	95.0
Other Consumers' Goods	88	91.2	89.0	87.8	86.7	86.4
II. Producers' Goods	351	93.5	89.7	89.0	87.1	85.2
Producers' Equipment	22	94.0	96.2	96.2	91.6	91.5
Producers' Materials	329	93.4	89.0	88.2	86.6	84.5
Building and Construction Materials	97	98.6	96.0	94.8	92.9	92.4
Manufacturers' Materials	232	92.3	87.4	86.7	85.2	82.8
INDEX NUMBERS OF COMMODITIES CLASSIFIED ACCORDING TO ORIGIN						
Total Raw and Partly Manufactured	232	92.9	89.7	90.3	88.6	84.9
Total Fully and Chiefly Manufactured	276	91.2	91.6	90.3	89.1	87.6
I. Articles of Farm Origin (Domestic and Foreign)						
A. Field, (grain, fruits, cotton, etc.)						
(a) Raw and partly manufactured	98	81.3	76.0	78.5	77.2	74.9
(b) Fully and chiefly manufactured	69	86.9	89.5	88.4	87.1	85.1
(c) Total	167	84.2	83.2	83.7	82.5	80.4
B. Animal						
(a) Raw and partly manufactured	41	112.1	112.8	111.9	110.2	100.6
(b) Fully and chiefly manufactured	49	96.9	95.5	93.2	91.6	89.2
(c) Total	90	103.5	103.0	101.3	99.7	94.1
C. Canadian Farm Products						
(1) Field (grain, etc.)	46	83.7	78.6	82.4	81.4	79.3
(2) Animal	13	108.8	112.5	110.4	109.9	98.2
(3) Total	59	93.1	91.3	92.9	92.1	86.4
II. Articles of Marine Origin						
(a) Raw and partly manufactured	5	91.1	83.3	80.0	82.2	85.1
(b) Fully and chiefly manufactured	11	107.1	105.2	101.7	99.9	99.5
(c) Total	16	102.8	99.3	95.8	95.1	95.6
III. Articles of Forest Origin						
(a) Raw and partly manufactured	31	100.8	96.3	95.3	93.5	92.7
(b) Fully and chiefly manufactured	21	87.8	87.5	87.5	86.0	86.0
(c) Total	52	93.9	91.6	91.1	89.5	89.1
IV. Articles of Mineral Origin						
(a) Raw and partly manufactured	57	92.8	90.4	89.5	85.6	84.8
(b) Fully and chiefly manufactured	126	93.2	91.9	91.1	90.8	90.4
(c) Total	183	93.0	91.2	90.3	88.5	87.9





INDEX NUMBERS OF COMMODITIES  
(Classified According to Chief Component Material)  
1926=100

Commodities	No. of Price Series	June 1929	March 1930	April 1930	May 1930	June 1930
Total Index	502	93.5	91.9	91.7	89.9	88.0
1. Vegetable Products	124	84.9	84.9	86.4	85.3	83.0
Fruits	15	116.1	106.2	106.6	110.9	110.9
Fresh, Domestic	3	148.0	110.0	112.1	119.6	123.4
Fresh, Foreign	4	80.7	109.4	110.0	115.7	113.4
Dried	5	88.8	90.5	86.2	83.2	80.4
Canned	3	100.1	101.0	100.0	97.9	96.1
Grains	23	84.0	75.5	78.0	76.2	73.4
Flour and Milled Products	9	85.7	93.5	93.3	90.5	83.8
Bakery Products	2	97.3	103.2	103.2	103.2	103.2
Vegetable Oils	6	86.9	89.7	90.1	87.5	83.0
Rubber and Its Products	6	65.1	61.6	61.6	61.6	61.6
Sugar and Its Products and Glucose	5	84.1	86.0	82.2	79.5	79.5
Tea, Coffee, Cocoa and Spices	13	100.1	90.4	88.2	83.6	77.6
Tobacco	8	78.8	78.8	78.8	78.8	78.8
Vegetables	15	64.9	98.0	114.4	117.1	118.8
Miscellaneous	22	90.2	88.4	88.7	88.1	88.7
11. Animals and Their Products	74	107.7	106.4	104.4	103.3	98.8
Fishery Products	16	102.8	99.3	95.8	95.1	95.7
Furs	9	134.6	121.0	125.1	125.1	125.1
Hides and Skins	5	119.1	98.1	96.9	95.4	98.8
Leather, Unmanufactured	5	112.5	106.1	105.1	104.5	103.8
Boots and Shoes	3	107.8	100.7	98.3	98.3	98.3
Live Stock	4	139.9	127.6	125.9	131.6	121.1
Meats and Poultry	10	118.5	113.8	113.3	112.8	108.7
Milk and Its Products	12	99.6	105.1	101.7	98.4	89.8
Fats	5	89.4	88.2	88.5	87.2	85.4
Eggs	5	85.8	89.1	84.9	87.9	85.9
111. Fibres, Textiles & Textile Products	60	91.6	85.8	83.4	83.0	82.1
Cotton, raw	2	107.2	87.1	93.9	93.9	82.3
Cotton Yarn and Thread	2	99.0	97.4	96.7	96.7	94.3
Cotton Fabrics	17	91.3	90.8	87.6	87.6	87.6
Knit Goods	1	94.4	92.2	92.2	92.2	92.2
Sash Cord	1	113.0	105.2	105.2	105.2	105.2
Flax, Hamm & Jute Products	8	85.1	76.2	73.9	73.6	73.0
Silk, raw	3	78.3	73.1	71.8	66.1	56.3
" thread and yarn	2	82.0	82.7	82.7	82.7	80.1
" hosiery	2	98.6	90.9	90.9	84.1	84.1
" fabrics	4	76.0	67.9	64.0	63.0	63.0
Artificial Silk & Products	2	79.5	69.4	69.4	69.4	69.4
Wool, raw	3	89.8	56.8	54.3	54.3	56.8
" yarns	4	96.2	81.9	81.0	81.0	81.0
" hosiery and knit goods	2	112.9	99.4	99.4	99.4	94.1
" blankets	1	107.1	99.0	93.9	93.9	93.9
" cloth	4	97.6	86.9	83.5	83.5	81.9
Carpets	2	92.4	92.4	92.4	92.4	92.4





Commodities	No. of Price Series	June 1929	Mar. 1930	Apr. 1930	May 1930	June 1930
IV. Wood, Wood Products and Paper	44	94.0	91.8	91.4	89.7	89.3
Newsprint	2	86.5	86.5	86.5	84.7	84.7
Lumber and Timber	27	104.3	97.0	96.1	93.8	92.4
Pulp	3	92.8	94.7	93.4	92.8	93.4
Furniture	11	99.9	99.9	99.9	99.9	99.9
Matches	1	73.1	73.1	73.1	73.1	73.1
V. Iron and Its Products	39	93.8	92.6	92.5	91.6	91.3
Pig Iron and Steel Billets	4	94.9	89.9	88.7	88.7	88.7
Rolling Mill Products	10	95.9	94.7	94.6	94.8	93.9
Pipe (Cast Iron & Steel)	2	91.9	91.9	91.9	87.2	90.4
Hardware	14	93.9	92.6	92.6	92.6	92.6
Wire	3	89.3	89.3	89.3	89.3	89.3
Scrap	5	84.6	84.6	84.6	77.1	74.5
Miscellaneous	1	100.0	100.0	100.0	100.0	100.0
VI. Non-Ferrous Metals and Their Products	15	98.7	93.1	86.8	80.6	77.8
Aluminium	1	88.7	89.8	89.8	89.8	89.2
Antimony	1	51.7	49.3	47.3	45.8	42.8
Brass, Copper & Products	5	125.6	125.7	108.8	95.2	90.9
Lead and Its Products	2	81.7	72.9	69.2	65.4	65.8
Nickel Ingots	1	97.5	97.5	97.5	97.5	97.5
Silver	1	84.5	67.2	68.5	65.7	53.4
Tin Ingots	1	68.7	60.9	61.6	51.9	48.2
Zinc and Its Products	2	79.3	63.0	60.6	57.5	56.6
Solder	1	73.4	63.1	63.1	59.2	54.1
VII. Non-Metallic Minerals and Their Products	73	93.0	93.3	93.0	90.8	90.5
Bricks	8	102.7	101.8	101.8	101.8	101.8
Pottery	2	97.3	92.0	92.0	81.2	81.2
Coal	11	94.7	97.6	97.4	92.0	92.2
Coke	6	94.9	100.8	100.8	100.8	100.8
Coal Tar	1	100.0	100.0	100.0	100.0	100.0
Glass and Its Products	6	78.9	71.6	71.6	71.6	71.6
Petroleum Products	6	87.8	85.5	85.0	85.0	83.8
Salt	4	96.1	102.0	102.0	102.0	102.0
Sulphur	1	100.0	100.0	100.0	100.0	100.0
Plaster	3	96.9	96.9	96.9	96.9	96.9
Lime	4	99.2	99.1	98.9	98.4	98.4
Cement	1	98.9	101.3	100.8	100.8	100.7
Sand and Gravel	8	105.3	96.5	96.5	96.5	96.5
Crushed Stone	3	103.6	94.5	94.5	94.5	94.5
Building Stone	3	66.6	66.6	66.6	66.6	66.6
Asbestos	6	107.5	107.5	107.5	107.5	107.5
VIII. Chemicals and Allied Products	73	95.5	94.0	93.9	93.4	92.9
Inorganic Chemicals	22	92.7	93.8	93.7	93.6	93.5
Organic Chemicals	7	73.2	80.7	79.8	79.5	79.5
Coal Tar Products	2	110.7	102.6	102.6	102.6	102.6
Dyeing and Tanning Materials	10	95.5	93.7	93.5	93.2	93.0
Paint Materials	9	94.5	89.1	89.2	86.0	85.5
Drugs & Pharmaceutical Chemicals	10	104.2	104.4	103.9	103.6	101.8
Fertilizers	10	96.3	83.7	85.9	91.5	91.5
Industrial Gases	2	97.1	97.1	97.1	97.1	97.1
Soap	1	100.0	100.0	100.0	100.0	100.0





INDEX NUMBERS OF COMMODITIES

(Classified According to Purpose for which used, 1926 = 100)

	No. of Price Series	June 1929	Mar. 1930	Apr. 1930	May 1930	June 1930
I. <u>CONSUMERS' GOODS (GROUPS A &amp; B)</u>	204	93.4	93.5	92.6	91.3	89.8
A. <u>Foods, Beverages &amp; Tobacco</u>	116	96.8	100.3	99.7	98.3	95.0
Beverages	8	100.5	90.6	88.3	83.3	76.2
Flour and Milled Products	5	83.1	90.0	90.1	85.9	82.0
Bakery Products	2	97.3	103.2	103.2	103.2	103.2
Fish	16	102.8	99.3	95.8	95.1	95.7
Fruits	15	116.1	106.2	106.6	110.9	110.9
Meats and Poultry	10	118.5	113.8	113.3	112.8	108.7
Milk and Milk Products	12	99.6	105.1	101.7	98.4	89.8
Sugar and Its Products	3	84.1	86.0	82.2	79.5	79.5
Vegetables	15	64.9	98.0	114.4	117.1	118.8
Eggs	5	85.8	89.1	84.9	87.9	85.9
Tobacco	8	68.3	78.8	78.8	78.8	78.8
Miscellaneous	17	89.8	87.0	87.0	86.4	85.5
B. <u>Other Consumers' Goods</u>	88	91.2	89.0	87.8	86.7	86.4
Clothing, Boots, Shoes, Rubbers,						
Hosiery and Underwear	41	95.2	90.5	88.1	87.2	86.7
Household Equipment & Supplies	47	88.2	87.8	87.5	86.4	86.1
II. <u>PRODUCERS' GOODS (GROUPS C &amp; D)</u>	351	93.5	89.7	89.0	87.1	85.2
C. <u>Producers' Equipment</u>	22	94.0	96.2	96.2	91.6	91.5
Tools	3	98.1	98.1	98.1	98.1	98.1
Light, Heat and Power Equipment						
and Supplies	17	93.7	96.0	96.0	91.8	91.7
Miscellaneous	2	101.4	101.4	101.4	84.5	84.5
D. <u>Producers' Materials</u>	329	93.4	89.0	88.2	86.6	84.5
Building and Construction						
Materials	97	98.6	96.0	94.8	92.9	92.4
Lumber	27	104.3	97.0	96.1	93.8	92.4
Painters' Materials	11	85.9	96.0	96.1	90.7	90.4
Miscellaneous	59	96.4	95.1	93.2	92.6	92.8
<u>Manufacturers' Materials</u>	232	92.3	87.4	86.7	85.2	82.8
Textile and Clothing	47	89.9	84.0	81.1	80.9	80.0
Furs and Leather Goods	19	121.0	110.1	116.9	110.4	110.5
For Metal Working Industries	35	97.8	93.0	87.9	82.8	80.4
For Chemical Using Industries	44	91.5	92.8	92.6	92.4	92.4
For Heat Packing Industries	4	139.9	127.6	125.9	131.6	121.1
For Milling and Other						
Industries	23	84.0	75.5	78.0	76.2	73.4
Miscellaneous Producers'						
Materials	60	85.8	87.4	86.6	85.5	84.3





WHOLESALE PRICES OF IMPORTANT COMMODITIES

		Aver. 1926	June 1929	Apr. 1930	May 1930	June 1930
OATS, No.2 C.W.						
Ft.William and Pt.Arthur Basis	Bush.	.5483	.511	.5382	.4992	.4764
WHEAT, No.1 Man. Northern						
Ft.William & Pt.Arthur Basis	Bush.	1.4951	1.1784	1.0982	1.0796	1.032
FLOUR, First Patent 2-98's jute						
Toronto		8.821	7.23	7.90	7.717	7.228
SUGAR, raw 96° Centrifugal						
New York	Cwt.	2,5469	1.71875	1.625	1.4375	1.5625
SUGAR, granulated						
Montreal	Cwt.	5.9577	4.94	4.84	4.66	4.66
RUBBER, ribbed, smoked sheets						
New York	Lb.	.488	.2066	.14915	.14656	.22926
RUBBER, Para, upriver, fine						
New York	Lb.	.434	.2262	.16215	.1551	.14389
CATTLE, Steers, good 1000-1200 Lbs.						
Toronto	Cwt.	7.33	11.47	11.06	10.70	9.47
HOGS, Bacon						
Toronto	Cwt.	13.32 1/	12.95	13.00	12.13	12.42
BEEF HIDES, Packer hides, native steers						
Toronto	Lb.	.1347	.15 1/2	.13-	.13-	.135-
SOLE LEATHER, Mfr's. green hide crops						
Toronto	Lb.	.3858	.45 1/2	.14	.14	.155
BOX SIDES B.						
Mill	Ft.	.2625	.29	.26	.26	.25
BUTTER, creamery, finest						
Montreal	Lb.	.39	.387	.349	.3307	.301
CHEESE, Canadian, old large						
Montreal	Lb.	.2558	.28	.26	.26	.26
EGGS, Fresh Extras, Montreal	Doz.	.465	.37	.34	.358	.359
COTTON, raw 1-1/16"						
Hamilton	Lb.	.1942	.1989	.174	.1757	.1514
COTTON YARNS, 10's white single						
Hosiery cops, mill	Lb.	.368	.3575	.3325	.3325	.3075
SAXONY, 4.50 yds. to lb.	Lb.	.7172	.6412	.6075	.6075	.6075
GINGHAM, dress 6.50-7.75 yds.						
to lb. Montreal	Lb.	1.086	1.0174	1.0174	1.0174	1.0174
SILK, raw, grand double extra						
New York	Lb.	6,642	5.35	4.85	4.55	4.00
WOOL, Eastern bright 1/4 blood domestic						
Toronto	Lb.	.306	.28	.17	.17	.17-
WOOL, Western Range, semi-bright						
1/4 blood, domestic, Toronto	Lb.	.3158	.26-	.16-	.16-	.17-
PULP, groundwood No. 1						
Mill	Ton	29.67	26.75	27.70	27.36	27.72
PIG IRON, basic						
Mill	Ton	21.833	21.00	20.00	20.00	20.00
STEEL MERCHANT BARS,						
Mill	100 Lbs.	2.45	2.40	2.40	2.40	2.40
COPPER, Electrolytic domestic						
Montreal	Cwt.	15.767	19.60	17.65	14.84	14.28
LEAD, domestic						
Montreal	Cwt.	8.154	6.70	5.65	5.33	5.36
TIN INGOTS, Straits						
Toronto	Lb.	.6691	.46	.4125	.3475	.3225
SPELTER, domestic						
Montreal	Cwt.	8.825	7.00	5.34	5.07	4.99
COAL, anthracite						
Toronto	Ton	13.56	13.12	13.47	12.87	12.97
COAL, bituminous, N.S.						
run-of-mine	Ton	6.083	6.00	6.00	6.00	6.00
GASOLINE						
Toronto	Gal.	.2525	.205	.195	.195	.195
SULPHURIC ACID 66° Beaume						
Ontario	Net Ton	14.00	14.00	16.00	16.00	16.00

1/ Hogs, thick smooth.





INDEX NUMBERS OF RETAIL PRICES, RENTS, AND COSTS OF SERVICES IN CANADA,  
JUNE, 1930.

(1926=100)

The index number of retail prices, rents, and costs of services declined from 100.4 in May to 100.3 in June.

The index for 46 food items was 100.4 for June as compared with 100.7 in May, higher prices for eggs, potatoes and some meats being more than offset by lower levels for butter and milk. Fresh eggs moved up from 34.9¢ to 35.6¢, and cooking and storage eggs from 31.1¢ to 31.7¢ per doz. Potatoes rose from 49.1¢ to 50.7¢ per bk. Beef, sirloin, advanced from 37.3¢ to 38.0¢ beef shoulder from 24.0¢ to 24.3¢, fresh pork from 30.5¢ to 30.8¢ and salt pork from 27.0¢ to 27.3¢ per lb. Creamery butter declined from 39.5¢ to 38.7¢ per lb., while the dairy variety was 36.4¢ and 34.9¢, respectively, for May and June. Milk fell from 13.3¢ to 12.9¢ per quart, due to usual seasonal declines.

The fuel index dropped slightly from 95.8 to 95.6. Reductions in coke prices contributed mainly to this result.

The rental index has been revised back as far as May to indicate a rise from 105.5 to 106.5.

Index numbers for other groups were unchanged.

INDEX NUMBERS OF RETAIL PRICES, RENTS AND COSTS OF SERVICES  
1914 - June 1930.

Year	Total Index	Food Index	Fuel Index	Rent Index	Clothing Index	Sundries Index
1914.....	66.0	68.9	64.5	62.2	63.9	66.2
1915.....	67.3	69.5	63.2	60.3	69.6	66.9
1916.....	72.5	77.5	64.5	60.9	79.7	70.2
1917.....	85.6	100.0	71.7	65.4	93.7	76.8
1918.....	97.4	114.6	78.9	69.2	109.5	86.1
1919.....	107.2	122.5	86.2	75.6	125.9	95.4
1920.....	124.2	141.1	102.6	86.5	153.2	104.0
1921.....	109.2	107.9	109.2	94.2	124.7	106.0
1922.....	100.0	91.4	104.6	98.1	105.7	106.0
1923.....	100.0	92.1	104.6	100.6	104.4	105.3
1924.....	98.0	90.7	102.0	101.3	102.9	103.3
1925.....	99.3	94.7	100.0	101.3	101.9	101.3
1926.....	100.0	100.0	100.0	100.0	100.0	100.0
1927.....	98.5	98.1	97.9	98.8	97.5	99.6
1928.....	98.9	98.6	96.9	101.2	97.4	99.0
1929.....	100.0	101.0	96.8	103.3	96.9	99.2
1928						
August.....	99.0	98.9	96.3	101.2	97.6	99.1
September.....	99.1	99.2	96.3	101.2	97.6	99.0
October.....	99.7	101.1	97.1	101.2	97.6	99.1
November.....	99.6	100.7	97.1	101.2	97.6	99.0
December.....	99.5	100.5	97.1	101.2	97.6	99.0
1929						
January.....	99.4	100.3	97.1	101.2	97.6	98.8
February.....	99.1	99.4	97.2	101.2	97.6	98.6
March.....	99.3	100.0	97.4	101.2	97.3	98.7
April.....	98.7	98.1	97.5	101.2	97.3	98.7
May.....	99.0	97.9	96.7	103.6	96.9	98.9
June.....	99.0	97.8	96.1	103.6	96.9	99.1
July.....	99.3	98.5	96.0	103.6	96.9	99.4
August.....	101.0	104.2	96.2	103.6	96.7	99.5
September.....	100.9	103.6	96.3	103.6	96.7	99.7
October.....	101.2	103.2	96.5	105.5	96.7	99.7
November.....	101.5	104.3	97.1	105.5	96.5	99.6
December.....	101.6	104.8	97.3	105.5	96.5	99.6
1930						
January.....	102.2	106.5	97.3	105.5	96.5	99.6
February.....	101.9	106.0	97.3	105.5	95.9	99.6
March.....	101.5	104.8	97.4	105.5	95.9	99.6
April.....	100.4	101.1	97.2	105.5	95.9	99.6
May.....	100.4	100.7	95.8	106.5	95.9	99.6
June.....	100.3	100.4	95.6	106.5	95.9	99.6





- 11 -  
INDEX NUMBERS OF SECURITY PRICES

Movement of Indexes in June, 1930.  
 Traders' Index

The "Traders' Index" of the prices of twenty-five best selling industrial and public utility common stocks on the Montreal and Toronto Exchanges was 821.3 for the month of June, 1930, as compared with 921.2 for May, 1930, (monthly indexes are simple averages of weekly figures).

Some of the principal changes in price during the month were as follows:- Consolidated Mining and Smelting fell from \$217.8 to \$190.8 (including Rights), Dominion Bridge from \$63.3 to \$50.7, National Steel Car from \$64.8 to \$52.2, Power Corporation from \$81.8 to \$71.3, Shawinigan from \$74.7 to \$65.7, Quebec Power from \$65.1 to \$54.7, Page Hersey from \$95.8 to \$87.5, International Nickel from \$32.5 to \$24.8, Montreal Light, Heat and Power "New" from \$63.2 to \$56.7 and Brazilian from \$47.8 to \$41.4.

Sales of International Nickel mounted from 435,200 to 754,200, Walkers from 64,200 to 92,200, Shawinigan from 14,700, 31,800, Massey-Harris from 14,100 to 31,000, Dominion Bridge from 19,800 to 35,700, Canadian Car and Foundry from 15,700 to 30,900, Canada Power and Paper from 20,600 to 34,300 and Power Corporation from 12,200 to 22,900, Montreal Light, Heat and Power "New" declined from 90,100 to 67,000.

Notes: The Traders' Index measures the trend of gains or losses for an "Average" Trader on the Montreal and Toronto Stock Exchanges, who buys and sells as a whole and turns over his investments every week.

Column I.- Weighted index numbers of the prices of the 25 best selling Industrial and Public Utility Common Stocks on the Montreal and Toronto Exchanges.

Column II.- Index numbers of the total money value of the stocks included in Column I.

Date	I Prices	II Values
1926	100	100
1927		
August	187.8	118.5
September	211.3	232.6
October	236.4	285.1
November	251.7	211.2
December	281.4	294.0
1928		
January	317.7	282.9
February	322.0	230.3
March	388.5	230.6
April	379.5	262.0
May	417.1	256.0
June	388.0	184.3
July	391.2	108.0
August	391.3	127.8
September	470.6	166.4
October	553.2	362.4
November	714.1	440.1
December	809.7	256.8
1929		
January	1039.5	475.3
February	1125.8	280.3
March	1057.3	242.4
April	962.4	128.4
May	955.1	113.4
June	968.0	82.2
July	1032.1	86.0
August	1170.1	212.2
September	1230.4	179.2
October	1125.8	269.5
November	769.2	119.4
December	786.7	55.8
1930		
January	828.9	56.4
February	864.3	51.9
March	898.8	56.1
April	1010.9	93.1
May	921.2	53.3
June	821.3	52.7

THE HISTORY OF THE

REIGN OF

CHARLES THE FIRST

BY

JOHN BURNET

OF THE UNIVERSITY OF OXFORD

IN TWO VOLUMES

LONDON

Printed by J. Streater, at the

Sign of the Gun, in St. Dunstons

Church-yard, 1679.

By Authority.

W. B.

1679.

1679.

1679.

1679.

1679.

1679.

1679.

1679.

1679.

1679.

1679.

1679.

1679.

1679.

1679.

1679.

1679.

1679.



The monthly index of one hundred industrial stocks declined from 196.3 in May to 165.4 in June. All sub-groups were lower. Miscellaneous showing the biggest decline, viz., from 266.7 to 215.4. Oils fell from 265.0 to 222.0 and Iron and Steel and Iron and Steel Products from 221.1 to 192.1. Eighteen utilities declined from 133.3 to 124.2 and in this group, Power and Traction fell from 147.0 to 132.3. Nine Companies abroad were 123.8 in June as compared with 139.8 in May and eight banks declined from 117.7 to 115.2.

#### PREFERRED STOCKS

The monthly index number of twenty-two preferred stocks was 99.5 in June as compared with 102.6 in May. There were many noticeable declines: Abitibi fell from 83.1 to 79.3, Can. Bread from 119.3 to 115.0, City Dairy from 146.5 to 126.5, Moore Preferred "A" from 124.2 to 115.4, Moore Preferred "B" from 148.0 to 142.1, National Breweries from 31.5 to 27.0, Sherwin Wms. from 122.0 to 118.0 and Tuckett from 124.8 to 117.4, Canadian Car and Foundry from 27.5 to 25.3. Maple Leaf rose from 95.0 to 96.2 and Ogilvie from 126.0 to 128.5.

#### INDEX NUMBERS OF 22 PREFERRED STOCKS

1926 - 1930  
(1926 = 100)

	Jan.	Feb.	Mar.	Apr.	May	June	July	Aug.	Sept.	Oct.	Nov.	Dec.
1926	100.4	101.4	100.9	99.6	98.3	98.7	99.1	99.4	100.0	100.2	101.0	101.4
1927	102.1	102.5	102.7	102.6	102.5	102.1	102.5	103.8	104.8	107.8	110.8	111.8
1928	111.5	110.9	109.9	111.4	111.7	111.2	110.3	107.5	107.6	106.2	104.0	107.9
1929	107.4	108.1	106.8	104.3	104.3	104.8	104.8	105.6	105.1	102.9	99.8	100.4
1930	97.9	98.8	100.9	103.4	102.6	99.5						

#### WEIGHTED INDEX NUMBERS OF 17 MINING STOCKS

1926 = 100

The weighted index number of seventeen mining stocks computed by the Dominion Bureau of Statistics on the base 1926=100 was 68.0 for the week ending July 3rd, as compared with 68.3 for the previous week.

Eleven gold stocks fell from 62.0 to 61.1. Gold copper stocks represented by Amulet and Noranda rose from 108.3 to 111.8. Four silver and miscellaneous stocks fell from 29.2 to 28.5.

Among the gold stocks the weekly average prices behaved as follows: Premier fell from 92¢ to 88¢, Dome from \$8.58 to \$8.18, Hollinger from \$5.96 to \$5.90, Sylvanite from 46¢ to 43¢, Teck-Hughes from \$6.56 to \$6.35 and Wright-Hargreaves from \$1.96 to \$1.92. McIntyre rose from \$17.99 to \$18.02 and Lake Shore from \$21.69 to \$21.89.

Average weekly prices were higher for one of the gold copper stocks and lower for the other. Noranda rose from \$21.79 to \$22.57 while Amulet fell from 53¢ to 46¢.

In the silver and miscellaneous group, Nipissing fell from \$1.12 to \$1.10 and Mining Corporation from \$1.18 to \$1.12.





INVESTORS MONTHLY INDEX NUMBERS OF COMMON STOCKS  
1926 = 100

General Banks				Utilities		Industrials								Companies Abroad				
No. of Securities	Total	Total	Total	Trans- port- ation	Tele- phone	Power and Tract- ion	Total	Iron & Steel & Iron & Steel Products	Pulp and Paper	Mill- ing	Oils	Tex- tiles and Cloth- ing	Food and Allied Products	Bever- ages	Mis- cell- aneous	Total	In- dust- rial	Util- ity
					Tele- graph			Products	Products			Products	Products	Products	Products		Products	Products
1930	135	8	18	2	2	14	100	16	11	5	4	9	23	11	21	9	1	8
1928																		
January	149.3	129.3	136.2	132.1	115.5	147.8	172.5	224.1	151.6	187.7	173.9	140.3	170.3	165.5	175.4	143.3	123.2	168.2
February	146.0	134.4	135.1	128.0	116.7	150.1	167.6	213.5	153.4	182.6	165.8	137.0	166.7	158.2	172.5	140.2	115.0	171.2
March	149.5	134.6	137.6	134.5	119.3	147.3	172.4	224.3	156.0	176.7	171.9	133.8	162.5	168.6	179.0	147.6	118.1	183.6
April	156.6	146.7	139.5	132.8	120.8	154.0	177.0	249.8	160.0	180.4	177.0	136.4	165.4	181.9	177.9	156.0	124.5	194.2
May	164.5	146.8	150.6	137.7	124.4	175.0	184.4	255.7	156.3	184.9	193.6	134.0	169.7	187.3	183.4	163.8	132.2	202.1
June	151.9	139.1	139.1	127.6	119.4	160.1	170.0	230.8	127.0	175.8	180.8	123.0	157.3	165.0	177.5	150.2	120.6	192.6
July	152.6	136.7	140.6	129.2	118.0	162.1	169.6	234.7	113.7	176.1	186.2	120.0	155.8	167.4	175.9	153.0	121.5	197.8
August	148.6	136.5	136.1	129.5	115.6	150.7	166.5	222.2	98.9	169.9	186.3	116.5	150.1	158.6	181.8	145.9	117.7	186.5
September	159.7	139.9	143.4	136.2	118.6	159.7	185.3	247.3	108.1	178.9	210.8	117.7	153.1	175.4	210.5	154.9	122.9	200.3
October	168.4	142.2	144.2	137.9	118.7	159.7	201.2	267.5	99.3	190.7	228.2	114.2	159.3	183.4	245.8	168.6	134.3	217.5
November	184.2	144.6	149.2	149.6	119.2	157.3	229.3	317.5	101.1	197.5	261.5	114.3	166.6	195.8	295.6	189.1	159.5	234.2
December	183.6	147.4	149.7	149.3	120.3	158.8	237.3	328.6	97.1	208.3	246.5	11 1	182.5	184.4	336.3	185.5	151.5	235.6
1929																		
January	207.4	150.2	154.0	153.7	122.3	164.9	286.1	374.6	101.6	217.2	276.3	110.9	196.7	189.1	468.8	210.5	183.3	253.5
February	209.4	147.7	158.7	161.2	122.3	168.1	292.9	377.5	103.0	247.6	261.4	108.2	196.3	201.3	501.6	198.9	173.0	239.5
March	192.6	143.5	150.1	156.5	121.8	153.9	266.2	346.9	94.8	235.2	250.7	100.5	180.3	175.1	441.4	176.8	161.5	204.5
April	191.8	140.9	143.6	149.9	117.0	146.9	269.3	338.5	94.8	235.4	298.8	99.6	182.8	175.9	402.1	180.3	172.6	200.0
May	187.1	135.6	140.2	144.5	117.7	144.6	269.3	325.6	93.8	236.8	304.7	101.3	176.9	155.6	406.5	164.2	157.2	182.4
June	185.6	129.7	143.4	144.2	117.9	152.1	264.1	319.7	92.3	234.4	294.9	99.4	173.8	148.2	403.6	162.8	144.7	192.9
July	192.8	135.0	150.7	150.8	120.1	161.3	271.2	321.6	96.8	249.1	315.2	96.0	178.8	138.4	406.4	171.9	155.1	201.1
August	207.4	135.4	159.2	145.8	128.0	184.0	293.8	325.4	109.2	256.8	359.3	91.2	181.3	136.7	433.6	192.6	168.5	231.2
September	217.1	133.2	163.1	144.7	123.3	194.8	315.8	322.4	108.2	267.0	417.8	90.5	178.3	129.0	457.4	197.2	172.7	236.2
October	186.4	131.4	149.3	135.0	121.5	174.3	255.4	248.8	92.6	244.0	348.0	84.8	155.8	102.4	351.7	172.7	151.8	206.2
November	154.7	117.9	130.9	128.3	114.8	141.1	209.4	212.9	77.4	206.1	296.4	79.2	138.9	88.0	267.6	129.5	125.9	141.4
December	156.5	117.4	131.6	122.6	114.4	148.5	210.0	231.6	76.0	196.8	296.1	79.4	139.8	93.8	266.2	137.9	137.6	146.6
1930																		
January	155.7	120.3	133.3	123.0	115.7	151.6	209.1	232.5	63.4	174.7	286.6	78.9	140.0	85.8	287.7	130.3	131.4	136.9
February	155.3	120.4	141.0	139.9	117.5	151.6	205.5	224.8	63.3	171.9	263.0	76.2	136.9	79.2	305.2	121.0	117.8	131.6
March	157.6	118.3	137.4	132.4	115.8	151.2	210.2	221.8	64.9	156.2	270.8	72.4	132.5	77.5	317.4	133.2	128.8	145.8
April	166.5	118.6	143.7	132.7	115.3	164.9	220.9	233.5	69.9	163.6	296.5	72.3	145.3	87.4	316.4	150.7	139.8	171.4
May	152.1	117.7	133.3	127.9	113.3	147.0	196.3	221.1	62.2	158.8	265.0	72.0	142.6	88.5	266.7	139.8	128.1	160.7
June	134.7	115.2	124.2	122.5	111.6	132.3	165.4	192.1	56.1	149.7	222.0	67.3	132.9	77.9	215.4	123.8	114.6	141.2





- 14 -  
INDEX NUMBER OF SEVENTEEN MINING STOCKS  
1926=100

	Gold 11	Copper 2	Silver and Miscellaneous 4	Total Index 17
<u>1929</u>				
January	85.4	334.7	80.0	125.7
February	84.4	323.6	85.3	123.7
March	84.7	301.4	82.5	120.3
April	82.9	267.2	75.4	112.7
May	77.4	272.4	72.7	108.9
June	72.1	267.5	69.8	103.9
July	73.2	298.2	69.4	109.6
August	74.1	325.9	70.5	114.8
September	63.6	317.0	65.3	104.8
October	59.3	247.8	59.8	90.1
November	54.2	185.0	55.0	75.7
December	54.3	178.1	51.3	74.5
<u>1930</u>				
January	57.4	191.4	49.6	78.9
February	62.9	209.3	50.1	86.1
March	62.5	206.3	47.8	85.2
April	63.6	189.8	43.5	83.3
May	64.5	144.6	35.8	76.3
June	64.3	126.3	32.2	73.1
Week ending Mar. 6th	62.3	209.4	48.6	85.5
" " " 13th	62.4	208.5	48.0	85.5
" " " 20th	62.7	203.2	47.7	84.9
" " " 27th	62.6	204.0	46.8	84.9
" " Apr. 3rd	62.0	203.7	46.6	84.4
" " " 10th	63.4	201.2	45.6	85.0
" " " 17th	64.0	186.1	42.5	82.9
" " " 24th	65.2	168.4	39.5	80.9
" " May 1st	65.0	152.0	37.1	78.0
" " " 8th	64.0	133.9	35.7	74.3
" " " 15th	64.4	146.8	35.7	76.6
" " " 22nd	64.1	145.7	34.8	76.1
" " " 29th	64.9	144.5	35.5	76.7
" " June 5th	66.7	143.9	35.2	78.0
" " " 12th	65.8	132.6	34.0	75.5
" " " 19th	62.7	120.4	30.5	70.8
" " " 26th	62.0	108.3	29.2	68.3
" " July 3rd	61.1	111.5	28.5	68.0

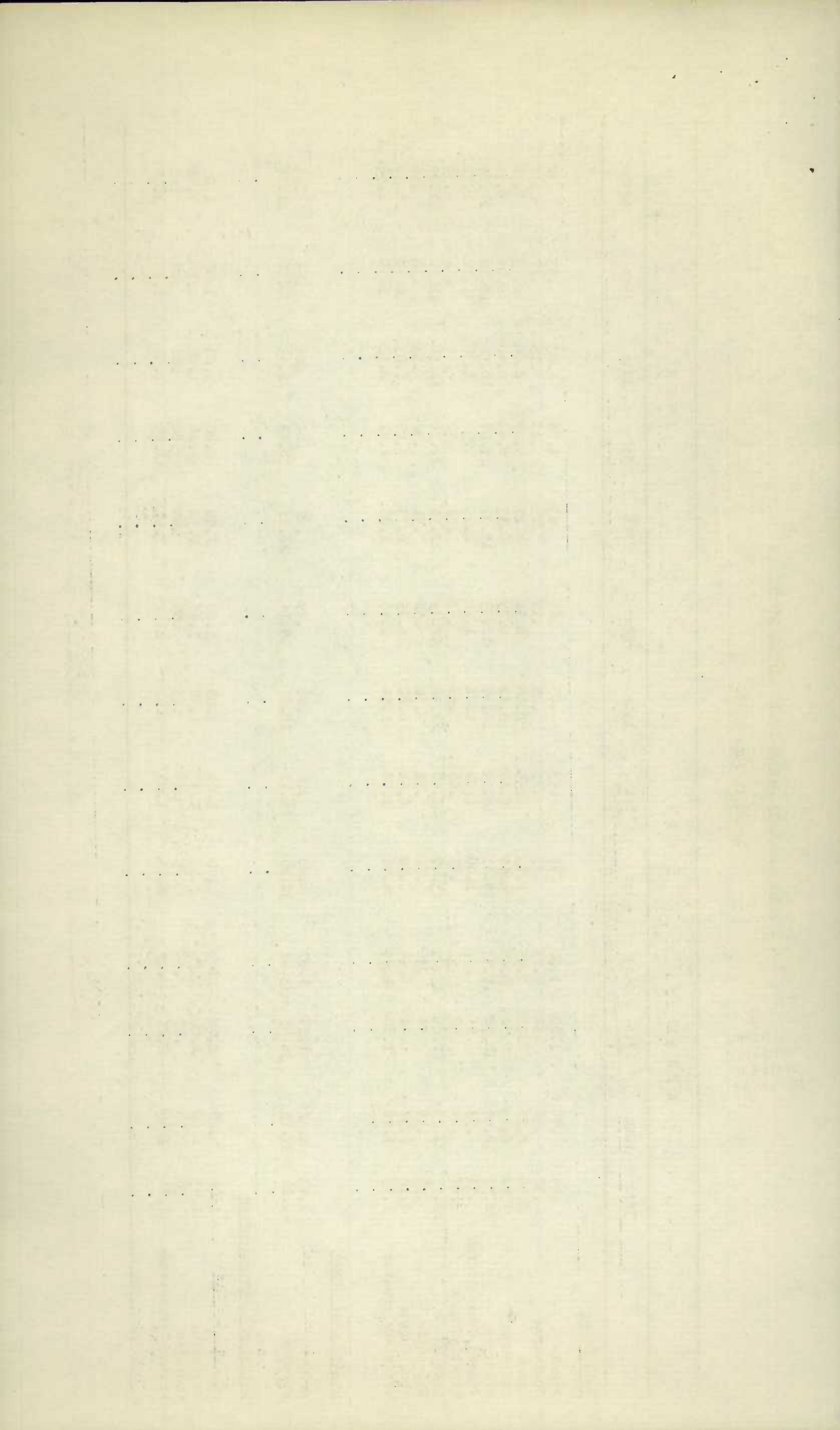




## WEEKLY AVERAGE PRICES OF 17 MINING STOCKS

April to June 1930.

	A P R I L				M A Y				J U N E				
	3rd.	10th	17th	24th	1st	8th	15th	22nd	29th	5th	12th	19th	26th
<u>Gold Group</u>													
Premier	.99	.98	1.00	1.00	.99	.95	.85	.85	.93	1.04	1.03	.93	.92
Coniaurum	.32	.32	.32	.25	.25	.25	.25	.15	.15	.15	.15	.17	.17
Dome	8.96	8.92	8.95	9.05	8.73	8.36	8.66	8.91	8.87	9.09	8.88	8.73	8.58
Hollinger	5.74	6.13	6.28	6.49	6.49	6.40	6.42	6.29	6.33	6.40	6.40	6.09	5.96
McIntyre	18.52	18.69	18.78	19.33	19.11	18.34	18.47	18.53	19.07	19.07	18.56	18.18	17.99
Vipond Consolidated	.91	.93	.95	.97	1.00	1.02	1.08	1.16	1.25	1.34	1.30	1.22	1.22
Kirkland Lake	.67	.64	.60	.59	.65	.66	.65	.62	.62	.72	.66	.61	.58
Lake Shore	22.57	22.73	22.85	23.09	23.00	22.48	22.40	22.33	22.55	22.76	22.58	21.56	21.69
Sylvanite	.55	.55	.54	.56	.52	.51	.50	.50	.51	.52	.53	.50	.46
Teck Hughes	6.18	6.37	6.44	6.44	6.50	6.61	6.82	6.75	6.73	7.09	7.03	6.68	6.56
Wright-Hargreaves	1.75	1.76	1.80	1.94	1.94	1.92	1.94	1.96	2.08	2.21	2.12	1.99	1.96
<u>Gold-Copper Group</u>													
Amulet	1.43	1.42	1.25	1.07	.88	.75	.86	.79	.82	.84	.82	.66	.53
Noranda	40.26	39.75	36.85	33.42	30.29	26.71	29.25	29.14	28.87	28.73	26.43	24.11	21.79
<u>Silver and Miscellaneous</u>													
Beaver	1.00	1.00	1.00	1.00	1.00	1.00	1.00	1.00	1.00	1.00	1.00	1.00	1.00
Nipissing	1.63	1.62	1.66	1.56	1.53	1.47	1.50	1.47	1.52	1.46	1.42	1.26	1.12
Coniagas	.98	.98	.87	.85	.85	.85	.85	.85	.80	.80	.80	.80	.80
Mining Corporation	2.70	2.60	2.27	2.20	1.75	1.63	1.61	1.53	1.61	1.63	1.52	1.23	1.18





INDEX NUMBERS OF INTEREST RATES IN CANADA  
(1926=100)

The index numbers of Interest Rates calculated from the yields of the most popular Ontario Bonds on the basis 1926=100 moved downward in June being 100.8 as compared with 101.3 for May. The index is based on information received from Messrs. Wood, Gundy and Company Limited, showing the yield on these bonds to be on 4.83% basis for June.

Index Numbers of Interest Rates in Canada Calculated  
From Yields of Ontario Bonds, 1900-1930.

Base 1926-100

	1900	1901	1902	1903	1904	1905	1906				
January	73.1	77.9	79.3	78.5	78.5	78.5	76.2				
April	74.1	78.5	79.3	78.5	78.5	75.2	76.2				
June	75.2	78.7	79.3	78.5	79.3	74.1	76.2				
October	77.2	78.7	79.3	78.5	79.3	75.2	76.8				
December	77.7	79.3	78.5	78.5	78.3	76.2	77.2				
	1907	1908	1909	1910	1911	1912	1913				
January	78.3	88.7	82.5	81.4	83.5	83.5	88.7				
April	81.4	87.7	81.4	82.5	81.0	85.6	89.8				
June	85.6	86.6	80.4	82.5	81.0	86.6	90.8				
October	87.7	85.6	80.4	82.5	81.4	87.7	91.9				
December	88.7	83.5	81.4	83.5	83.5	88.7	91.9				
	1914	1915	1916	1917	1918	1919					
January	91.9	88.7	109.6	100.2	125.3	121.1					
April	90.8	91.9	110.6	109.6	125.3	116.9					
June	88.7	93.9	109.6	114.8	126.3	112.7					
October	88.7	104.4	104.4	123.2	125.3	116.9					
December	88.7	109.6	102.3	125.3	125.3	120.0					
	1920	1921	1922	1923	1924	1925	1926	1927	1928	1929	1930
January	120.0	125.3	116.9	112.7	106.5	99.2	100.2	97.1	89.8	97.1	102.3
February	120.0	125.3	114.8	110.6	106.1	100.2	100.2	97.1	87.7	98.1	102.3
March	120.0	125.3	113.8	109.6	106.1	100.2	100.2	96.0	88.7	101.3	101.3
April	121.1	125.3	112.7	107.5	106.1	100.2	100.2	95.2	88.7	103.3	101.3
May	121.1	126.3	112.7	107.5	106.1	99.2	100.2	95.0	90.8	104.4	101.3
June	125.3	126.3	112.7	107.5	105.8	99.2	100.2	95.0	91.9	103.3	100.8
July	125.3	128.4	112.7	107.5	103.5	99.2	100.2	95.0	93.9	103.3	
August	125.3	128.4	112.7	107.5	99.2	99.2	100.2	95.0	96.0	102.3	
September	125.3	127.3	111.7	107.5	99.2	99.2	100.2	95.0	96.0	104.4	
October	129.4	126.3	111.7	107.9	100.2	100.2	100.2	93.9	95.0	103.3	
November	129.4	119.4	112.7	107.3	99.2	100.2	99.2	93.3	95.0	103.3	
December	128.4	119.4	113.2	107.3	99.2	100.2	99.2	90.8	96.0	102.3	





AVERAGE MONTHLY QUOTATIONS FOR STERLING AND NEW YORK  
FUNDS AT MONTREAL, 1926-1930.

	Sterling Exchange Montreal	New York Funds Montreal
<u>1926</u>		
January	4.86245	1.00211
February	4.87398	1.00331
March	4.87301	1.00349
April	4.85303	.99931
May	4.85307	.99907
June	4.8555	.99875
July	4.85165	.99725
August	4.84567	.99839
September	4.84255	.99850
October	4.84202	.99852
November	4.83539	.99851
December	4.84957	1.0007
Average	4.85301	.99982
<u>1927</u>		
January	4.85425	1.0016
February	4.85305	1.00158
March	4.85350	1.00087
April	4.84664	.99884
May	4.84913	.9992
June	4.85573	.99942
July	4.85764	1.00067
August	4.85702	1.00045
September	4.8558	.99934
October	4.85932	.99895
November	4.86236	.99847
December	4.88258	1.00089
Average	4.85727	1.00002
<u>1928</u>		
January	4.87954	1.0017
February	4.87908	1.0018
March	4.8758	.99983
April	4.87349	.99974
May	4.88220	1.00088
June	4.88748	1.0023
July	4.86925	1.0020
August	4.84795	.99369
September	4.8434	.99959
October	4.8454	1.00026
November	4.8411	.99810
December	4.85738	1.00274
Average	4.86517	1.00017
<u>1929</u>		
January	4.85701	1.00269
February	4.86539	1.0038
March	4.87705	1.00597
April	4.88555	1.0076
May	4.87914	1.0068
June	4.88418	1.0083
July	4.86971	1.0049
August	4.87039	1.0056
September	4.87949	1.0076
October	4.92085	1.0144
November	4.94980	1.0157
December	4.9212	1.0078
Average	4.88831	1.0076
<u>1930</u>		
January	4.9184	1.01345
February	4.8931	1.00599
March	4.8706	1.00209
April	4.8637	1.00043
May	4.8655	1.00172
June	4.8563	1.000





MONTHLY INDEXES OF AMERICAN STOCK PRICES

Issued by the Standard Statistics Company Inc. of New York  
1926=100

	Total 402 Stocks	Industrials 335 Stocks	Railroads 33 Stocks	Utilities 34 Stocks
<u>1927</u>				
January	105.6	105.6	107.1	104.4
February	107.9	107.5	111.6	105.3
March	109.1	108.6	112.2	107.3
April	111.1	110.0	115.7	110.5
May	114.2	113.1	118.1	114.2
June	115.4	114.4	119.2	115.6
July	117.2	116.7	120.7	114.9
August	122.0	112.3	123.1	118.5
September	127.7	128.9	125.2	124.1
October	126.7	127.5	124.3	124.5
November	129.6	131.3	124.9	125.6
December	133.1	135.5	126.8	127.2
<u>1928</u>				
January	134.4	137.4	125.3	129.5
February	132.3	134.8	121.6	130.9
March	137.9	141.1	125.9	134.4
April	145.9	149.5	130.7	142.5
May	152.1	154.9	133.2	155.3
June	145.3	148.2	126.7	148.1
July	144.2	147.8	124.6	145.3
August	148.3	152.6	126.5	147.9
September	156.6	162.2	129.6	155.8
October	159.1	166.2	128.2	154.5
November	171.1	178.9	134.9	168.6
December	171.4	178.4	134.9	173.4
<u>1929</u>				
January	185.2	192.5	141.8	192.7
February	186.5	192.3	141.6	202.4
March	189.1	196.0	140.4	203.7
April	186.6	193.4	138.3	201.4
May	187.7	192.6	138.7	212.3
June	190.7	191.0	144.8	233.0
July	207.2	202.7	160.0	272.8
August	218.1	210.3	165.4	304.3
September	225.3	216.1	168.1	321.0
October	201.7	194.4	157.0	276.6
November	151.1	144.8	135.1	194.4
December	153.8	146.9	136.3	200.9
<u>1930</u>				
January	156.3	148.8	136.5	208.7
February	165.5	155.9	142.5	230.6
March	172.4	163.0	143.2	242.1
April	181.0	170.8	141.7	263.7
May	170.5	160.1	136.0	250.0
June	152.8	143.1	124.5	223.5





WORLD PRICE MOVEMENTS, MAY, 1930

WHOLESALE

The decline in wholesale prices continued with increased severity during May, as indicated by the index numbers listed below. Losses registered were frequently two and three times as great as those for April.

In the United Kingdom, weaker prices for cereals, meat and fish, coal, and metals other than iron or steel, were chiefly responsible for the reduction in the Board of Trade index. Better quotations for wool and certain foods acted as a check to the downward movement.

The Statistique Generale index for France showed both French products and imported products to be lower, but the decline in the case of the latter was double that for domestic goods. It has been noted that whereas in 1928 the wholesale price of imported commodities averaged 41 points above those of goods produced in France, at the end of May French products were 105 points higher than imported products.

In the United States, lower prices for grains, livestock, butter, coal, copper, and lumber were leading items which caused indexes to decline. The general purchasing power of the U.S. dollar, taking a 1926 dollar as being equal to \$1.00, was estimated at \$1.122 in May, while for farm products alone it was only \$1.075, indicating that relative to other commodities, farm products have more buying power than in 1926 (i.e., the general merchandise that could be sold for \$1.00 in 1926 can now be sold for only 88¢, while farm products which sold for \$1.00 in 1926 still bring 93¢).

Comparative Wholesale Prices Data for May, 1930, April 1930, and May, 1929.

Country	May 1930	April 1930	May 1929	May 1930 + or - % compared with		Index
				April 1930	May 1929	
United Kingdom	122.0	123.7	135.8	-1.4	-10.2	Board of Trade, 1913 = 100
France	553	560	636	-1.2	-13.1	Statistique Generale, July 1914 = 100
Germany	125.7	126.7	135.5	-0.8	-7.2	Federal Statistical Office 1913 = 100
Denmark	132	135	148	-2.2	-10.8	Official, 1913 = 100
Netherlands	118	122	142	-3.3	-16.9	Central Bureau of Statistics 1913 = 100
Belgium	774	777	851	-0.4	-9.0	Ministry of Industry and Labor April 1914 = 100
Italy	390	396	452	-1.5	-13.7	Bacchi, 1913 = 100
Sweden	115	118	133	-2.5	-13.5	Göteborgs Handels Tidning, July 1913 - June 1914 = 100
Norway	144	145	152	-0.7	-5.3	Official, 1913 = 100
Finland	90	92	98	-2.2	-8.2	Official, 1926 = 100
Poland	98.7	101.0	113.0	-2.5	-12.7	Commerce Reports, Jan. 1914 = 100
Austria	118	119	135	-0.8	-12.6	Federal Statistical Office, Jan.-July 1914 = 100
Switzerland	128.1	129.0	139.3	-0.7	-8.0	Official, July 1914 = 100
Hungary	96	96	123	un- changed	-22.0	Official, 1913 = 100
Canada	89.9	91.7	92.4	-2.0	-2.7	Dominion Bureau of Statistics 1926 = 100
United States	88.6	90.6	95.9	-2.2	-7.6	Irving Fisher, 1926 = 100
Peru	179	179	186	un- changed	-3.8	Official, 1913 = 100
New Zealand	1457	1459	1465	-0.1	-0.5	Government Statistician, 1909-1913 = 100

THE UNIVERSITY OF CHICAGO  
LIBRARY

THE UNIVERSITY OF CHICAGO  
LIBRARY  
1000 S. EAST ASIAN AVENUE  
CHICAGO, ILL. 60607

THE UNIVERSITY OF CHICAGO  
LIBRARY  
1000 S. EAST ASIAN AVENUE  
CHICAGO, ILL. 60607

THE UNIVERSITY OF CHICAGO  
LIBRARY  
1000 S. EAST ASIAN AVENUE  
CHICAGO, ILL. 60607

THE UNIVERSITY OF CHICAGO  
LIBRARY  
1000 S. EAST ASIAN AVENUE  
CHICAGO, ILL. 60607

THE UNIVERSITY OF CHICAGO  
LIBRARY  
1000 S. EAST ASIAN AVENUE  
CHICAGO, ILL. 60607

THE UNIVERSITY OF CHICAGO  
LIBRARY  
1000 S. EAST ASIAN AVENUE  
CHICAGO, ILL. 60607

THE UNIVERSITY OF CHICAGO  
LIBRARY  
1000 S. EAST ASIAN AVENUE  
CHICAGO, ILL. 60607

THE UNIVERSITY OF CHICAGO  
LIBRARY  
1000 S. EAST ASIAN AVENUE  
CHICAGO, ILL. 60607

THE UNIVERSITY OF CHICAGO  
LIBRARY  
1000 S. EAST ASIAN AVENUE  
CHICAGO, ILL. 60607

THE UNIVERSITY OF CHICAGO  
LIBRARY  
1000 S. EAST ASIAN AVENUE  
CHICAGO, ILL. 60607

THE UNIVERSITY OF CHICAGO  
LIBRARY  
1000 S. EAST ASIAN AVENUE  
CHICAGO, ILL. 60607

THE UNIVERSITY OF CHICAGO  
LIBRARY  
1000 S. EAST ASIAN AVENUE  
CHICAGO, ILL. 60607

THE UNIVERSITY OF CHICAGO  
LIBRARY  
1000 S. EAST ASIAN AVENUE  
CHICAGO, ILL. 60607

THE UNIVERSITY OF CHICAGO  
LIBRARY  
1000 S. EAST ASIAN AVENUE  
CHICAGO, ILL. 60607

THE UNIVERSITY OF CHICAGO  
LIBRARY  
1000 S. EAST ASIAN AVENUE  
CHICAGO, ILL. 60607



WORLD PRICE MOVEMENTS, MAY 1930.

COST OF LIVING

Cost of living indexes again moved predominantly downward in May, although losses varied greatly in magnitude in different areas. A glance at the percentage comparison of indexes in May of 1929 and 1930 shows that living costs in many instances have declined only a quarter or even a sixth of the amount lost by wholesale indexes for the same countries. Considerable attention has been directed to this fact in recent months, and retailers have been blamed for obstructing business revival by maintaining prices when the interests of industry and commerce would have been better served by keeping retail quotations in line with prices at wholesale. It is well to consider, however, that wholesale and retail indexes are not ordinarily based upon the same range of items, and furthermore that the retail cost of commodities is made up in large part of wage and distribution costs which have undergone no appreciable changes in most countries, in recent times. Living cost indexes also frequently include service charges and fees which tend to render them less sensitive to change.

It seems desirable therefore that too sweeping inferences should not be drawn from disparities between wholesale and cost of living indexes, without a careful examination of the series in question.

Comparative Cost of Living Data for May 1930, April 1930,  
and May 1929.

Country	May 1930	April 1930	May 1929	May 1930 $\pm$ or $\pm$ % compared with		Index
				April 1930	May 1929	
United Kingdom	154	155	160	- 0.6	- 3.7	Ministry of Labour, July 1914=100
France	120	119	127	$\neq$ 0.8	- 5.5	13 Articles, 11 Foods Paris, July 1914=100
Germany	146.7	147.4	153.5	- 0.5	- 4.4	Cost of Living, 72 Towns, 1913-1914=100
Belgium	867	870	864	- 0.3	$\neq$ 0.3	Cost of Living, April 1914=100
Switzerland	158	158	160	unchanged	- 1.2	Cost of Living, June 1914=100
Hungary	107	110	122	- 2.7	-12.3	Cost of Living, Buda Pest, 1913=100
Poland	115.7	116.5	125.1	- 0.7	- 7.5	Cost of Living, Warsaw, Jan. 1914=100
Austria	111	111	109	unchanged	$\neq$ 1.8	Cost of Living, Vienna, July 1914=100
Italy	144	146	148	- 1.4	- 2.7	Cost of Living, Jan.-June 1914=100
Roumania	131.0	131.1	131.8	- 0.1	- 0.6	Cost of Living, 1914=100
Norway	167	175	180	- 4.6	- 7.2	Cost of Living, July, 1914=100
Finland	146	148	158	- 1.4	- 7.6	Cost of Living, 21 Towns, Jan.-June 1914=100
Canada	100.4	100.4	99.0	unchanged	$\neq$ 1.4	Dominion Bureau of Statistics, 1926=100
United States	156.2	157.5	159.4	- 0.8	- 2.0	Cost of Living, National Industrial Conference Board, July 1914=100
Japan	159	162	185	- 1.9	-14.1	Tokio - Retail Prices - 1914=100

# THE JOURNAL OF THE

## AMERICAN MEDICAL ASSOCIATION

The Journal of the American Medical Association is published weekly, except during the months of December and January, when it is published bi-weekly. It is the official journal of the American Medical Association, and is the only medical journal published in the United States which is read by the majority of the American physicians. It is published for the American Medical Association, 535 North Dearborn Street, Chicago, Ill., U.S.A. The subscription price for 1925 is \$5.00 in advance, payable by check or money order. Single copies are sold at 15 cents. The Journal is sent free of charge to members of the American Medical Association. The Journal is also sent free of charge to libraries and to physicians who are not members of the American Medical Association, but who are interested in the progress of medicine. The Journal is published in English and French. The French edition is published by the same publisher, 535 North Dearborn Street, Chicago, Ill., U.S.A. The French edition is published for the American Medical Association, 535 North Dearborn Street, Chicago, Ill., U.S.A. The French edition is published for the American Medical Association, 535 North Dearborn Street, Chicago, Ill., U.S.A.

NAME	ADDRESS					CITY
	STREET	CITY	STATE	COUNTRY	POST OFFICE	
Dr. J. H. Smith	123 Main St.	Chicago	Ill.	U.S.A.	60601	Chicago, Ill.
Dr. W. E. Jones	456 Oak St.	Chicago	Ill.	U.S.A.	60602	Chicago, Ill.
Dr. R. L. Brown	789 Elm St.	Chicago	Ill.	U.S.A.	60603	Chicago, Ill.
Dr. T. M. Green	1011 Maple St.	Chicago	Ill.	U.S.A.	60604	Chicago, Ill.
Dr. A. N. White	1313 Cedar St.	Chicago	Ill.	U.S.A.	60605	Chicago, Ill.
Dr. S. P. Black	1615 Birch St.	Chicago	Ill.	U.S.A.	60606	Chicago, Ill.
Dr. D. K. Gray	1917 Spruce St.	Chicago	Ill.	U.S.A.	60607	Chicago, Ill.
Dr. F. G. Hall	2219 Ash St.	Chicago	Ill.	U.S.A.	60608	Chicago, Ill.
Dr. H. J. King	2521 Hickory St.	Chicago	Ill.	U.S.A.	60609	Chicago, Ill.
Dr. L. M. Scott	2823 Walnut St.	Chicago	Ill.	U.S.A.	60610	Chicago, Ill.
Dr. N. O. Adams	3125 Chestnut St.	Chicago	Ill.	U.S.A.	60611	Chicago, Ill.
Dr. P. Q. Baker	3427 Madison St.	Chicago	Ill.	U.S.A.	60612	Chicago, Ill.
Dr. R. S. Carter	3729 Franklin St.	Chicago	Ill.	U.S.A.	60613	Chicago, Ill.
Dr. T. U. Evans	4031 Taylor St.	Chicago	Ill.	U.S.A.	60614	Chicago, Ill.
Dr. V. W. Foster	4333 Lincoln St.	Chicago	Ill.	U.S.A.	60615	Chicago, Ill.
Dr. X. Y. Gibson	4635 Jackson St.	Chicago	Ill.	U.S.A.	60616	Chicago, Ill.
Dr. Z. A. Howell	4937 Adams St.	Chicago	Ill.	U.S.A.	60617	Chicago, Ill.
Dr. B. C. Nelson	5239 Bond St.	Chicago	Ill.	U.S.A.	60618	Chicago, Ill.
Dr. C. D. Phillips	5541 Erie St.	Chicago	Ill.	U.S.A.	60619	Chicago, Ill.
Dr. E. F. Roberts	5843 Belmont St.	Chicago	Ill.	U.S.A.	60620	Chicago, Ill.
Dr. G. H. Turner	6145 Broadway St.	Chicago	Ill.	U.S.A.	60621	Chicago, Ill.
Dr. I. J. Walker	6447 Commercial St.	Chicago	Ill.	U.S.A.	60622	Chicago, Ill.
Dr. K. L. Young	6749 LaSalle St.	Chicago	Ill.	U.S.A.	60623	Chicago, Ill.
Dr. M. N. Allen	7051 State St.	Chicago	Ill.	U.S.A.	60624	Chicago, Ill.
Dr. O. P. Wright	7353 Taylor St.	Chicago	Ill.	U.S.A.	60625	Chicago, Ill.
Dr. Q. R. Lewis	7655 Franklin St.	Chicago	Ill.	U.S.A.	60626	Chicago, Ill.
Dr. S. T. Clark	7957 Madison St.	Chicago	Ill.	U.S.A.	60627	Chicago, Ill.
Dr. U. V. King	8259 Franklin St.	Chicago	Ill.	U.S.A.	60628	Chicago, Ill.
Dr. W. X. Scott	8561 Taylor St.	Chicago	Ill.	U.S.A.	60629	Chicago, Ill.
Dr. Y. Z. Adams	8863 Taylor St.	Chicago	Ill.	U.S.A.	60630	Chicago, Ill.
Dr. A. B. Baker	9165 Taylor St.	Chicago	Ill.	U.S.A.	60631	Chicago, Ill.
Dr. C. D. Carter	9467 Taylor St.	Chicago	Ill.	U.S.A.	60632	Chicago, Ill.
Dr. E. F. Evans	9769 Taylor St.	Chicago	Ill.	U.S.A.	60633	Chicago, Ill.
Dr. G. H. Foster	10071 Taylor St.	Chicago	Ill.	U.S.A.	60634	Chicago, Ill.
Dr. I. J. Gibson	10373 Taylor St.	Chicago	Ill.	U.S.A.	60635	Chicago, Ill.
Dr. K. L. Howell	10675 Taylor St.	Chicago	Ill.	U.S.A.	60636	Chicago, Ill.
Dr. M. N. Nelson	10977 Taylor St.	Chicago	Ill.	U.S.A.	60637	Chicago, Ill.
Dr. O. P. Phillips	11279 Taylor St.	Chicago	Ill.	U.S.A.	60638	Chicago, Ill.
Dr. Q. R. Roberts	11581 Taylor St.	Chicago	Ill.	U.S.A.	60639	Chicago, Ill.
Dr. S. T. Turner	11883 Taylor St.	Chicago	Ill.	U.S.A.	60640	Chicago, Ill.
Dr. T. U. Walker	12185 Taylor St.	Chicago	Ill.	U.S.A.	60641	Chicago, Ill.
Dr. V. W. Young	12487 Taylor St.	Chicago	Ill.	U.S.A.	60642	Chicago, Ill.
Dr. X. Y. Allen	12789 Taylor St.	Chicago	Ill.	U.S.A.	60643	Chicago, Ill.
Dr. Z. A. Wright	13091 Taylor St.	Chicago	Ill.	U.S.A.	60644	Chicago, Ill.
Dr. B. C. Lewis	13393 Taylor St.	Chicago	Ill.	U.S.A.	60645	Chicago, Ill.
Dr. C. D. Clark	13695 Taylor St.	Chicago	Ill.	U.S.A.	60646	Chicago, Ill.
Dr. E. F. King	13997 Taylor St.	Chicago	Ill.	U.S.A.	60647	Chicago, Ill.
Dr. G. H. Scott	14299 Taylor St.	Chicago	Ill.	U.S.A.	60648	Chicago, Ill.
Dr. I. J. Adams	14601 Taylor St.	Chicago	Ill.	U.S.A.	60649	Chicago, Ill.
Dr. K. L. Baker	14903 Taylor St.	Chicago	Ill.	U.S.A.	60650	Chicago, Ill.
Dr. M. N. Carter	15205 Taylor St.	Chicago	Ill.	U.S.A.	60651	Chicago, Ill.
Dr. O. P. Evans	15507 Taylor St.	Chicago	Ill.	U.S.A.	60652	Chicago, Ill.
Dr. Q. R. Foster	15809 Taylor St.	Chicago	Ill.	U.S.A.	60653	Chicago, Ill.
Dr. S. T. Gibson	16111 Taylor St.	Chicago	Ill.	U.S.A.	60654	Chicago, Ill.
Dr. T. U. Howell	16413 Taylor St.	Chicago	Ill.	U.S.A.	60655	Chicago, Ill.
Dr. V. W. Nelson	16715 Taylor St.	Chicago	Ill.	U.S.A.	60656	Chicago, Ill.
Dr. X. Y. Phillips	17017 Taylor St.	Chicago	Ill.	U.S.A.	60657	Chicago, Ill.
Dr. Z. A. Roberts	17319 Taylor St.	Chicago	Ill.	U.S.A.	60658	Chicago, Ill.
Dr. B. C. Turner	17621 Taylor St.	Chicago	Ill.	U.S.A.	60659	Chicago, Ill.
Dr. C. D. Walker	17923 Taylor St.	Chicago	Ill.	U.S.A.	60660	Chicago, Ill.
Dr. E. F. Young	18225 Taylor St.	Chicago	Ill.	U.S.A.	60661	Chicago, Ill.
Dr. G. H. Allen	18527 Taylor St.	Chicago	Ill.	U.S.A.	60662	Chicago, Ill.
Dr. I. J. Wright	18829 Taylor St.	Chicago	Ill.	U.S.A.	60663	Chicago, Ill.
Dr. K. L. Lewis	19131 Taylor St.	Chicago	Ill.	U.S.A.	60664	Chicago, Ill.
Dr. M. N. Clark	19433 Taylor St.	Chicago	Ill.	U.S.A.	60665	Chicago, Ill.
Dr. O. P. King	19735 Taylor St.	Chicago	Ill.	U.S.A.	60666	Chicago, Ill.
Dr. Q. R. Scott	20037 Taylor St.	Chicago	Ill.	U.S.A.	60667	Chicago, Ill.
Dr. S. T. Adams	20339 Taylor St.	Chicago	Ill.	U.S.A.	60668	Chicago, Ill.
Dr. T. U. Baker	20641 Taylor St.	Chicago	Ill.	U.S.A.	60669	Chicago, Ill.
Dr. V. W. Carter	20943 Taylor St.	Chicago	Ill.	U.S.A.	60670	Chicago, Ill.
Dr. X. Y. Evans	21245 Taylor St.	Chicago	Ill.	U.S.A.	60671	Chicago, Ill.
Dr. Z. A. Foster	21547 Taylor St.	Chicago	Ill.	U.S.A.	60672	Chicago, Ill.
Dr. B. C. Gibson	21849 Taylor St.	Chicago	Ill.	U.S.A.	60673	Chicago, Ill.
Dr. C. D. Howell	22151 Taylor St.	Chicago	Ill.	U.S.A.	60674	Chicago, Ill.
Dr. E. F. Nelson	22453 Taylor St.	Chicago	Ill.	U.S.A.	60675	Chicago, Ill.
Dr. G. H. Phillips	22755 Taylor St.	Chicago	Ill.	U.S.A.	60676	Chicago, Ill.
Dr. I. J. Roberts	23057 Taylor St.	Chicago	Ill.	U.S.A.	60677	Chicago, Ill.
Dr. K. L. Turner	23359 Taylor St.	Chicago	Ill.	U.S.A.	60678	Chicago, Ill.
Dr. M. N. Walker	23661 Taylor St.	Chicago	Ill.	U.S.A.	60679	Chicago, Ill.
Dr. O. P. Young	23963 Taylor St.	Chicago	Ill.	U.S.A.	60680	Chicago, Ill.
Dr. Q. R. Allen	24265 Taylor St.	Chicago	Ill.	U.S.A.	60681	Chicago, Ill.
Dr. S. T. Wright	24567 Taylor St.	Chicago	Ill.	U.S.A.	60682	Chicago, Ill.
Dr. T. U. Lewis	24869 Taylor St.	Chicago	Ill.	U.S.A.	60683	Chicago, Ill.
Dr. V. W. Clark	25171 Taylor St.	Chicago	Ill.	U.S.A.	60684	Chicago, Ill.
Dr. X. Y. King	25473 Taylor St.	Chicago	Ill.	U.S.A.	60685	Chicago, Ill.
Dr. Z. A. Scott	25775 Taylor St.	Chicago	Ill.	U.S.A.	60686	Chicago, Ill.
Dr. B. C. Adams	26077 Taylor St.	Chicago	Ill.	U.S.A.	60687	Chicago, Ill.
Dr. C. D. Baker	26379 Taylor St.	Chicago	Ill.	U.S.A.	60688	Chicago, Ill.
Dr. E. F. Carter	26681 Taylor St.	Chicago	Ill.	U.S.A.	60689	Chicago, Ill.
Dr. G. H. Evans	26983 Taylor St.	Chicago	Ill.	U.S.A.	60690	Chicago, Ill.
Dr. I. J. Foster	27285 Taylor St.	Chicago	Ill.	U.S.A.	60691	Chicago, Ill.
Dr. K. L. Gibson	27587 Taylor St.	Chicago	Ill.	U.S.A.	60692	Chicago, Ill.
Dr. M. N. Howell	27889 Taylor St.	Chicago	Ill.	U.S.A.	60693	Chicago, Ill.
Dr. O. P. Nelson	28191 Taylor St.	Chicago	Ill.	U.S.A.	60694	Chicago, Ill.
Dr. Q. R. Phillips	28493 Taylor St.	Chicago	Ill.	U.S.A.	60695	Chicago, Ill.
Dr. S. T. Roberts	28795 Taylor St.	Chicago	Ill.	U.S.A.	60696	Chicago, Ill.
Dr. T. U. Turner	29097 Taylor St.	Chicago	Ill.	U.S.A.	60697	Chicago, Ill.
Dr. V. W. Walker	29399 Taylor St.	Chicago	Ill.	U.S.A.	60698	Chicago, Ill.
Dr. X. Y. Young	29701 Taylor St.	Chicago	Ill.	U.S.A.	60699	Chicago, Ill.
Dr. Z. A. Allen	30003 Taylor St.	Chicago	Ill.	U.S.A.	60700	Chicago, Ill.



# INDEX NUMBERS OF WHOLESALE PRICES IN CANADA AND OTHER COUNTRIES

C A N A D A							U N I T E D S T A T E S						
Authority	General Index	(Consumers' Goods)	(Producers' Goods)	Raw or Partly Mfd. Goods	Fully or Chiefly Mfd. Goods	Irving Fisher	Bureau of Labour Statistics	Bradstreet	Dun	Annalist			
Number of Commodities	502	236	204	351	232	276	550	106	200	72 Series			
Base	1926	1913	1926	1926	1926	1926	1926	1913	1913	1913			
1913	64.0	100	61.9	67.4			100	66.2x	69.8	9.2115	100	120.887	100
1914	65.5	102.3	62.7	69.7	61.6	67.4		65.0	68.1	8.9034	97	122.211	101
1915	70.4	109.9	65.6	77.0	68.4	71.8		66.8	69.5	9.8530	107	126.393	104
1916	84.3	131.6	74.7	88.1	83.3	87.1		84.0	85.5	11.8237	128	148.807	122
1917	114.3	178.5	95.4	119.6	99.4	113.7		117.4	117.5	15.6385	170	204.123	169
1918	127.4	199.0	107.4	131.5	103.8	123.2		128.7	131.3	18.7117	203	229.220	190
1919	133.9	209.2	118.7	139.0	105.3	121.7		136.7	138.6	18.6642	203	230.846	190
1920	155.9	243.5	140.0	163.1	125.2	142.6		149.8	154.4	18.8095	204	248.721	205
1921	110.0	171.8	108.0	112.8	111.5	123.3		97.3	97.6	11.3696	123	170.451	141
1922	97.3	152.0	95.1	99.1	103.4	108.8		98.6	96.7	12.1185	132	171.660	144
1923	98.0	153.0	93.7	97.8	105.5	107.4	158	101.1	100.6	13.4028	146	189.787	157
1924	99.4	155.2	93.2	99.5	101.7	107.0	149	98.9	98.1	12.8672	139	189.322	157
1925	102.6	160.3	97.2	104.9	101.8	101.6	159	105.2	103.5	13.9445	151	197.694	164
1926	100.0	156.2	100.0	100.0	100.0	100.0	151	100.0	100.0	13.0207	141	189.398	157
1927	97.6	152.5	95.9	98.5	100.0	96.6	142	94.2	95.4	12.7787	139	187.092	155
1928	96.4	150.6	95.7	96.6	97.5	95.0	149	98.2	97.7	13.2823	144	194.521	161
1929	95.6	149.3	94.7	96.3	97.4	93.0	146	96.3	96.5	12.6727	138	191.043	158
1929										(a)	(a)		
June	92.6	144.6	93.4	93.3	93.2	91.1	147	96.9	96.4	12.4562	135	185.856	154
July	96.0	150.0	94.4	100.6	101.2	93.1	149	98.5	98.0	12.4853	136	188.698	156
August	98.1	153.2	95.9	100.3	101.7	94.8	147	97.3	97.7	12.6309	137	192.206	159
September	97.3	152.0	95.6	99.0	101.4	94.2	145	96.0	97.5	12.6655	137	192.004	159
October	96.7	151.0	95.6	97.3	100.3	93.9	143	94.4	96.3	12.7030	138	192.204	159
November	95.8	149.7	95.1	95.5	97.2	93.7	140	92.7	94.4	12.4008	135	191.179	158
December	96.2	150.2	95.4	96.1	98.5	93.5	140	92.8	94.2	12.2367	133	188.969	156
1930													
January	95.6	149.4	95.4	94.6	98.0	92.9	141	93.3	93.4	11.6795	127	186.513	154
February	94.0	146.8	95.0	92.2	93.9	92.5	140	92.7	92.1	11.5141	125	184.426	153
March	91.9	143.6	93.5	89.7	89.7	91.6	138	90.8	90.8	11.2235	122	180.939	150
April	91.7	143.2	92.6	89.0	90.3	90.3	137	90.6	90.7	11.1833	121	179.294	148
May	89.9	140.4	91.3	87.1	88.6	89.1		88.6		10.9393	119	177.736	147
June	88.0	137.4	89.8	85.2	84.9	87.6		86.4		10.7741	117	176.240	146

(a) First of Month.  
M.





# INDEX NUMBERS OF WHOLESALE PRICES IN CANADA AND OTHER COUNTRIES

COUNTRY	SOUTH AMERICA		EUROPE				FRANCE		GERMANY	
	CHILE	PERU	Board of Trade	Economist	Statist	Times	Statistique General	U.S. Federal Reserve Board	Federal Statistical Office	
No. of Commodities			150		58	45	60	45	70	400
Base period	1913	1913	1913	1913	1927	1866-77	1913	July, 1914	1913	1913
Date										
1913	100	100	100	100		100 (a)	100			100
1914								100		106
1915						127.1				142
1916						159.5				152
1917						206.1				179
1918		212				226.5				217
1919		220				241.9				415
1920		239	307.3			295.3	328	506	512	1486
1921		205	197.2			182.4	189	337	334	1911
1922		190	158.8			154.1	158	332	319	34182
1923		189	158.9			151.8	162	431	394	x16620
1924		192	166.2	166.2	115.7	164.6	171	499	466	137.3 (c)
1925		202	159.1	160.9	112.0	159.5	161	561	479	141.8
1926		203	148.1	149.4	104.0	149.6	150	718		134.4
1927		203	141.4	143.7	100.0	144.2	143	630	585	137.6
1928	192.5	192	140.3	140.9	98.1	141.9	141	634	595	140.0
1929	192.4	186	136.5	132.8	92.4	134.4	134	623		137.2
1929						(d)				
May	193.9	186	135.8	131.5	91.5	132.9	131.8	636	606	135.5
June	195.3	186	135.6	131.7	91.7	133.0	132.1	623	598	135.1
July	193.8	187	137.4	134.6	93.7	135.4	134.0	626	593	137.8
August	196.6	187	135.8	134.5	93.6	134.0	134.0	609	581	138.1
September	195.3	186	135.8	131.9	91.8	132.5	132.5	610	571	138.1
October	191.1	186	136.1	129.6	90.2	130.7	132.6	602	567	137.2
November	187.0	184	134.0	126.9	88.3	127.4	130.1	596	561	135.5
December	182.9	182	132.5	126.9	88.3	128.0	128.8	588	550	134.3
1930										
January	181.0	181	131.0	123.7	86.1	125.4	125.8	576		132.3
February	178.2	181	127.8	121.0	84.2	123.3	121.8	576		129.3
March	176.0	180	124.5	119.4	83.1	121.2	120.8	565		126.4
April	174.0	179	123.7	117.2	81.6	119.4	118.9	560		126.7
May		179	122.0	115.8	80.6	116.2	116.3	553		125.7

(a) Converted to 1913 base. (c) New Series. (x) 000,000,000's omitted. (d) End of Month.

1912  
1913  
1914  
1915  
1916  
1917  
1918  
1919  
1920  
1921  
1922  
1923  
1924  
1925  
1926  
1927  
1928  
1929  
1930  
1931  
1932  
1933  
1934  
1935  
1936  
1937  
1938  
1939  
1940  
1941  
1942  
1943  
1944  
1945  
1946  
1947  
1948  
1949  
1950  
1951  
1952  
1953  
1954  
1955  
1956  
1957  
1958  
1959  
1960  
1961  
1962  
1963  
1964  
1965  
1966  
1967  
1968  
1969  
1970  
1971  
1972  
1973  
1974  
1975  
1976  
1977  
1978  
1979  
1980  
1981  
1982  
1983  
1984  
1985  
1986  
1987  
1988  
1989  
1990  
1991  
1992  
1993  
1994  
1995  
1996  
1997  
1998  
1999  
2000  
2001  
2002  
2003  
2004  
2005  
2006  
2007  
2008  
2009  
2010  
2011  
2012  
2013  
2014  
2015  
2016  
2017  
2018  
2019  
2020  
2021  
2022  
2023  
2024  
2025  
2026  
2027  
2028  
2029  
2030  
2031  
2032  
2033  
2034  
2035  
2036  
2037  
2038  
2039  
2040  
2041  
2042  
2043  
2044  
2045  
2046  
2047  
2048  
2049  
2050  
2051  
2052  
2053  
2054  
2055  
2056  
2057  
2058  
2059  
2060  
2061  
2062  
2063  
2064  
2065  
2066  
2067  
2068  
2069  
2070  
2071  
2072  
2073  
2074  
2075  
2076  
2077  
2078  
2079  
2080  
2081  
2082  
2083  
2084  
2085  
2086  
2087  
2088  
2089  
2090  
2091  
2092  
2093  
2094  
2095  
2096  
2097  
2098  
2099  
2100

1912

1913



INDEX NUMBERS OF WHOLESALE PRICES IN CANADA AND OTHER COUNTRIES.

COUNTRY	AUSTRIA	SWITZERLAND	BELGIUM	NETHERLANDS	NORWAY		SWEDEN		DENMARK	ALBANIA	SPAIN
Authority	Federal Statistical Office	Official	Ministry of Industry & Labour	Central Bureau of Statistics	Okonomisk Revue	Official	Gotabergs Handels Tidning	Commerce Department	Official	Official	Dir. General of Statistics
Number of Commodities	47x	71	130	48	100	95	47	160	118	23	74
Base Period	January July, 1914	July 1914	April, 1914	1913	Dec. 31/13- June 30/14	1913	July 1/13 June 30/14	1913	1913	1927	1913
Date											
1913				100	100	100	100	100	100		100
1914	100	100	100	109	115		116				101
1915				146	159		145				119
1916				226	233		185				141
1917				276	341		244				166
1918				376	345		339				207
1919				304	322		330				204
1920				292	382		347	359			221
1921	(a)	191.2	366(b)	182	298		211	222			190
1922	99	167.5	367	160	233		162	173			176
1923	124	180.6	497	151	233	232	157	163			172
1924	136	174.6	573	156	269	268	155	162			183
1925	136	161.6	558	155	251	253	157	161	210		188
1926	123	144.5	744	145	196	198	144	149	163		181
1927	133	142.2	847	148	160	167	141	146	153	100	172
1928	130	144.6	843	149	155	161	144	148	153	104	167
1929	130	141.2	851	142	148	153	134	140	150	100	172
1929											
May	135	139.3	851	142	146	152	133	140	148	101	171
June	134	139.4	848	141	147	151	132	139	146	100	170
July	132	142.8	858	141	149	152	133	140	149	99	169
August	132	143.0	850	142	148	154	133	141	150	98	170
September	128	142.2	846	141	148	154	132	140	150	98	171
October	127	142.0	838	140	147	154	132	138	149	98	172
November	125	139.7	834	137	146	152	130	135	147	97	171
December	123	138.6	823	135	146	152	128	134	146	97	172
1930											
January	125	135.6	808	131	144	150	126	131	143	91	172
February	123	133.0	791	126	143	147	123	128	140	89	172
March	121	131.0	774	122	142	146	118	125	136	87	172
April	119	129.0	777	122	141	145	118	124	135	87	
May	118	128.1	774		140	144	115		132		

(a) Since January 1925 Schilling prices. x Prices Index No. of Commodities changed from 42 to 47. (b) Average of 5 Months. (d) Fifteenth of Month. (e) New Series Federal Labour Department -- 78 articles.





# INDEX NUMBERS OF WHOLESALE PRICES IN CANADA AND OTHER COUNTRIES

E U R O P E										
COUNTRY	ITALY		FINLAND		POLAND	RUSSIA	ESTONIA	BULGARIA	HUNGARY	CZECHOSLOVAKIA
	Backd.	Milan Chamber of Commerce	Bank of Finland	Official	Commerce Reports	Official	Official	Dir. General of Statistics	Official	General Bureau of Statistics
No. of Commodities	100	125	Imports Exports	139	73	70				126
	1913	1913	1913	1926	Jan. 1914	1913	1913	1914	1913	July, 1914
	(b)									
Date	100	100	100	100		100	100			100
1913			106	103	100			100		
1914			162	134						
1915			227	254						
1916			519	375						
1917			741	415						
1918			755	441						
1919			1387	1053						
1920			1329	1213						
1921	531	517#	1072	1180	72.8	96	113			1334
1922	508	529	915	1145	85.9	169x	114		122	997
1923	512	536	1090	1090	109.8	172	116	2688	138	997
1924	512	554	1111	1111	125.4	183	124	3052	140	1008
1925	596	646	1052	1092	(c) 181.2	177	114	2781	124	954
1926	603	654	984	1092	100(d)	171	114	2819	132	979
1927	495	527	945	1092	101	177	121	3072	135	977
1928	462	491	955	1092	102	182	117	120.0(h)	121	916
1929	446	481	913	1060	98	(e)	(f)	(h)	(g)	(f)
1929						113.0	181	3338	129	917
May	452	485	969	1031	98	112.8	180	3245	127	922
June	447	480	953	1041	98	113.2	180	3200	119	916
July	440	477	939	1055	97	112.7	181	3141	114	902
August	437	474	931	1066	97	111.3	182	3111	109	895
September	437	472	929	1068	96	110.3	181	3174	111	888
October	436	470	922	1066	96	112.2	182	3085	107	876
November	431	464	917	1064	95	109.2	182	3076	107	126.1(d)
December	425	459	913	1060	95					
1930										
January	417	453	833	998	94	104.8	182	3105	106	124.2
February	408	445	853	985	93	100.6	110	2988	104	121.5
March	400	437	855	975	92	101.0	106	102.3	100	121.0
April	396	429	842	967	92	101.0	106	101.9	96	120.2
May	390	420			90		102		96	

(x) End of Year. (b) Revised Index. (c) New Series, 1926; recalculated on the basis of the new zloty as from October, (d) Gold Index.

#Average of eight months. (e) Average last week of month. (f) First of the following month. (g) Since Jan. 1929, new Index.

(h) Since Nov. 1928, Gold Index.





# INDEX NUMBERS OF WHOLESALE PRICES IN CANADA AND OTHER COUNTRIES

ASIA				OCEANIA		AFRICA			
COUNTRY	INDIA		CHINA	JAPAN	COMMONWEALTH OF AUSTRALIA	NEW SOUTH WALES	NEW ZEALAND	SOUTH AFRICA	EGYPT
AUTHORITY	Dept. of Statistics Calcutta	Labour Office Bombay	Bureau of Markets Shanghai	Bank of Japan	Commonwealth Statistician		Government Statistician	Census and Statistics Office	Dept. of Statistics (Cairo)
No. of Commodities	75	43	147	56	92	100	180	188	23
Base Period	July 1914	July 1914	February 1913	October 1899	1911	1911	1909-1913	1910	Jan. 1, 1913- July 31, 1914-
Date									
1913			100	100 (a)	100 (a)	100 (a)	1000 (a)	100 (a)	
1914	100	100		95.5	105.6	104.1	1041	96.9	100
1915	112			96.6	147.4	128.3	1171	107.1	103
1916	128			113.1	138.2	136.4	1259	122.6	128
1917	145			148.5	152.8	152.8	1432	140.7	176
1918	178	236		195.8	177.8	177.0	1685	153.1	211
1919	196	222		235.9	188.9	191.4	1761	164.8	231
1920	201	216	152.0	259.4	277.9	229.2	2067	223.3	316
1921	178	199	150.2	200.4	174.9	179.1	1919	160.4	173
1922	176	187	145.5	195.8	161.6	164.8	1645	128.4	146
1923	172	181	156.4	199.1	178.7	176.3	1579	126.6	132
1924	173	182	153.9	206.5	173.3	171.6	1648	128.7	143
1925	159	163	159.4	201.7	169.5	170.1	1609	127.6	152
1926	148	149	164.1	178.9	168.4	167.9	1536	123.3	132
1927	148	147	170.4	169.8	167.0	168.6	1461	124.2	121
1928	145	146	160.7	170.9	164.7	163.4	1474	120.7	120
1929	141	145	163.7	166.2	165.7		1471	115.1	115
1929									
May	139	141	161.7	168.6	164.0	166.7	1465		114
June	138	143	162.6	167.6	165.3	167.1	1466		108
July	142	145	162.7	166.0	166.6	168.6	1475	114.6	109
August	143	146	164.7	165.1	166.9	172.5	1481		112
September	143	147	167.1	164.4	170.8	175.7	1482		113
October	140	146	168.0	163.4	168.4	177.3	1480	113.4	115
November	137	143	164.7	159.6	165.8	173.1	1470		112
December	134	141	164.7	154.9	161.8	170.1	1461		110
1930									
January	131	139	169.6	152.2	158.0		1470	107.3	109
February	126	137	174.7	151.0	153.8		1464		106
March	125	137	173.9	148.1	151.4		1462		101
April	123		174.2	147.3	152.8		1459		101
May							1457		

(a) Converted to 1913 base. (b) End of Month. (c) Last Wednesday of Month. (d) Fifteenth of Month.

31



# INDEX NUMBERS OF COST OF LIVING AND RETAIL PRICES IN CANADA AND OTHER COUNTRIES

COUNTRY	CANADA		UNITED STATES		GREAT BRITAIN		FRANCE		BELGIUM	HOLLAND
	Dominion Bureau of Stats.		Foods	National			Foods	13	Cost of	
Nature of Index	Foods	General Retail Index (Foods, fuel, Clothing, Rent Sundries)	Bureau of Labor Statistics	Industrial Conference Board Cost of Living	Food	Cost of Living	Cities of more than 10,000 inhabitants	Articles 11 Foods Paris	Living 56 items 59 Localities	Foods 10 Towns
Base Period	1926	1926	1913	July 1914	July 1914	July 1914	July 1914	July 1914	1st.half of 1914	April 1914
1913	(3)	(3)	100							
1914	68.9	66.0	102.4					100	100	100
1914 July				100 July	100	100	100			
1915	69.5	67.3	101.3	105.5 "	131	125	123	120 July		
1916	77.5	72.5	113.7	108.7 "	160	148	142	129 "		
1917	100.0	85.6	146.4	131.3 "	202	180	184	183 "		
1918	114.6	97.4	168.3	152.2 "	218	210	245 Aug.	206 "		
1919	122.5	107.2	185.9	172.2 "	217	215	290 "	261 "	238 (1)	
1920	141.1	124.2	203.4	204.5 "	262	255	390 "	373 "	341	455
1921	107.9	109.2	153.3	163.1 "	226	222	352 "	306 "	307	392
1922	91.4	100.0	141.6	155.6 "	175	181	313 "	297 "	302 June	374 102
1923	92.1	100.0	146.2	161.9 "	165	171	351 "	321 "	334 "	428 93
1924	90.7	98.0	145.9	161.7 "	164	171	401 "	360 "	366 "	501 94
1925	94.7	99.3	157.4	168.7 "	168	173	451 "	221 "	390 "	518 95
1926	100.0	100.0	160.6	166.0 "	161	170	610 "	574 "	485 "	618 91
1927	98.1	98.5	155.4	162.2 "	156	164	553 "	557 "	525 "	786 89
1928	98.6	98.9	154.3	161.9 "	156	165	109 "(2)	111 "(2)	105 "(2)	819 91
1929	101.0	100.0	156.7	161.4 "	153	163	118 "	123 "	113 "	90
1929										
June	97.8	99.0	154.8	160.0		149	161	624 127	556 113	867 89
July	98.5	99.3	158.5	161.6		153	163	606 123		874 89
August	104.2	101.0	160.2	162.9		154	164	582 118(2)	606 123	879 90
September	103.6	100.9	160.8	163.2		156	165		602 122	555 113 889 89
October	103.2	101.2	160.5	163.4		159	167		612 124	894 90
November	104.3	101.5	159.7	163.0		159	167	593 120	618 125	897 90
December	104.8	101.6	158.0	162.0		157	166		610 125	565 115 897 89
1930										
January	106.5	102.2	155.4	160.4		154	164		609 124	895 89
February	106.0	101.9	153.0	158.8		150	161	583 118	598 121	890 87
March	104.8	101.5	150.1	157.4		143	157		591 120	565 115 879 85
April	101.1	100.4	151.2	157.5		140	155		586 119	870
May	100.7	100.4	150.1			138	154		120	867
June	100.4	100.3								

(1) First half of year. (2) Since date of stabilization, gold index. (3) Recalculated on 1926 base.

7/7/30/ M.





# INDEX NUMBERS OF COST OF LIVING AND RETAIL PRICES OF FOOD IN CANADA AND OTHER COUNTRIES

COUNTRY	NORWAY		SWEDEN		GERMANY		AUSTRIA		SPAIN	ITALY	SWITZERLAND
Nature of Index	Food 30 Towns	Cost of Living	Cost of Living	51 Articles (44 Foods 49 Towns)	Cost of Living 72 Towns	Food 72 Towns	Cost of Living Vienna	Food Vienna	Food Madrid	Cost of Living	Cost of Living (Official) Federal Labour
Base Period Date	July 1914	July 1914	July 1914	July 1914	1913 1914	Oct. 1913 July 1914	July 1914	July 1914 (4)	1914	Jan.-June 30, 1914	June 1914
1913											
1914					100 July	100 July		100	100	100	100
1914 July	100	100	100	100			100				
1915	123 July	117 June		124 July			160		108		
1916	153 "	146 "	130 June	142 "			340		116		
1917	203 "	190 "	159 "	181 "			671		125		
1918	271 "	253 "	219 "	261 "			1162		154	286 July	204 July
1919	290 "	275 "	257 "	210 "			2490		174	280 "	222 "
1920	319 "	307 "	270 "	297 "	1065 July		5100		190	441 "	224 "
1921	292 "	294 "	236 "	232 "	1250 "		9972	(5) 57900	189	494 "	200 "
1922	233 "	251 "	190 "	179 "	5392 "		263700	328236	181	488 "	164 "
1923	218 "	238 "	174 "	160 "	3765100 "		(2) 76	1291100	177	487 "	164 "
1924	248 "	249 "	171 "	159 "	116.0 "	131.6 July	86	1436200	184 July	512 "	169 "
1925	260 "	259 "	176 "	169 "	143.3 "	153.8 "	97		189 "	598 "	168 "
1926	198 "	220 "	172 "	156 "	142.4 "	145.3 "	103	115	187 "	649 "	162 "
1927	175 "	203 "	169 "	151 "	150.0 "	156.8 "	106	122	189 "	548 "	160 "
1928	173 "	193 "	172 "	157 "	152.6 "	154.1 "	108	119	176 "	143 "(3)	161 "
1929	157 "	180 "	169 "	151 "	154.4 "	155.7 "	112	123	181 "	148 "	161 "
1929											
May	156	180		149	153.5	154.1	109	120	182	148	160
June	156	179		149	153.4	154.0	111	124	179	149	161
July	157	180	169	151	154.4	155.7	112	123	177	148	161
August	161	182		151	154.0	155.0	113	124	178	146	162
September	160	180		151	153.6	154.2	113	122	178	147	163
October	160	180	170	150	153.5	153.8	113	122	179	149	163
November	159	180		148	153.0	153.0	113	122	181	149	162
December	157	179		147	152.6	152.5	113	122	181	150	162
1930											
January	156	178	167	145	151.6	150.2	113	123	182	150	161
February	154	177		144	150.3	147.9	112	120	182	148	160
March	152	176		142	148.7	145.1	111	119	186	147	159
April	152	175	165	140	147.4	142.8	111	118		146	158
May	151	167			146.7	141.7	111	117		144	158

(1) Gold Mark Prices. (2) Gold Index since 1926 new series. (3) Since date of stabilization gold index. (4) Since 1926 new index. (5) December.

1	2	3	4	5	6	7	8	9	10	11	12	13	14	15	16	17	18	19	20	21	22	23	24	25	26	27	28	29	30	31	32	33	34	35	36	37	38	39	40	41	42	43	44	45	46	47	48	49	50	51	52	53	54	55	56	57	58	59	60	61	62	63	64	65	66	67	68	69	70	71	72	73	74	75	76	77	78	79	80	81	82	83	84	85	86	87	88	89	90	91	92	93	94	95	96	97	98	99	100
101	102	103	104	105	106	107	108	109	110	111	112	113	114	115	116	117	118	119	120	121	122	123	124	125	126	127	128	129	130	131	132	133	134	135	136	137	138	139	140	141	142	143	144	145	146	147	148	149	150	151	152	153	154	155	156	157	158	159	160	161	162	163	164	165	166	167	168	169	170	171	172	173	174	175	176	177	178	179	180	181	182	183	184	185	186	187	188	189	190	191	192	193	194	195	196	197	198	199	200
201	202	203	204	205	206	207	208	209	210	211	212	213	214	215	216	217	218	219	220	221	222	223	224	225	226	227	228	229	230	231	232	233	234	235	236	237	238	239	240	241	242	243	244	245	246	247	248	249	250	251	252	253	254	255	256	257	258	259	260	261	262	263	264	265	266	267	268	269	270	271	272	273	274	275	276	277	278	279	280	281	282	283	284	285	286	287	288	289	290	291	292	293	294	295	296	297	298	299	300
301	302	303	304	305	306	307	308	309	310	311	312	313	314	315	316	317	318	319	320	321	322	323	324	325	326	327	328	329	330	331	332	333	334	335	336	337	338	339	340	341	342	343	344	345	346	347	348	349	350	351	352	353	354	355	356	357	358	359	360	361	362	363	364	365	366	367	368	369	370	371	372	373	374	375	376	377	378	379	380	381	382	383	384	385	386	387	388	389	390	391	392	393	394	395	396	397	398	399	400
401	402	403	404	405	406	407	408	409	410	411	412	413	414	415	416	417	418	419	420	421	422	423	424	425	426	427	428	429	430	431	432	433	434	435	436	437	438	439	440	441	442	443	444	445	446	447	448	449	450	451	452	453	454	455	456	457	458	459	460	461	462	463	464	465	466	467	468	469	470	471	472	473	474	475	476	477	478	479	480	481	482	483	484	485	486	487	488	489	490	491	492	493	494	495	496	497	498	499	500
501	502	503	504	505	506	507	508	509	510	511	512	513	514	515	516	517	518	519	520	521	522	523	524	525	526	527	528	529	530	531	532	533	534	535	536	537	538	539	540	541	542	543	544	545	546	547	548	549	550	551	552	553	554	555	556	557	558	559	560	561	562	563	564	565	566	567	568	569	570	571	572	573	574	575	576	577	578	579	580	581	582	583	584	585	586	587	588	589	590	591	592	593	594	595	596	597	598	599	600
601	602	603	604	605	606	607	608	609	610	611	612	613	614	615	616	617	618	619	620	621	622	623	624	625	626	627	628	629	630	631	632	633	634	635	636	637	638	639	640	641	642	643	644	645	646	647	648	649	650	651	652	653	654	655	656	657	658	659	660	661	662	663	664	665	666	667	668	669	670	671	672	673	674	675	676	677	678	679	680	681	682	683	684	685	686	687	688	689	690	691	692	693	694	695	696	697	698	699	700
701	702	703	704	705	706	707	708	709	710	711	712	713	714	715	716	717	718	719	720	721	722	723	724	725	726	727	728	729	730	731	732	733	734	735	736	737	738	739	740	741	742	743	744	745	746	747	748	749	750	751	752	753	754	755	756	757	758	759	760	761	762	763	764	765	766	767	768	769	770	771	772	773	774	775	776	777	778	779	780	781	782	783	784	785	786	787	788	789	790	791	792	793	794	795	796	797	798	799	800
801	802	803	804	805	806	807	808	809	810	811	812	813	814	815	816	817	818	819	820	821	822	823	824	825	826	827	828	829	830	831	832	833	834	835	836	837	838	839	840	841	842	843	844	845	846	847	848	849	850	851	852	853	854	855	856	857	858	859	860	861	862	863	864	865	866	867	868	869	870	871	872	873	874	875	876	877	878	879	880	881	882	883	884	885	886	887	888	889	890	891	892	893	894	895	896	897	898	899	900
901	902	903	904	905	906	907	908	909	910	911	912	913	914	915	916	917	918	919	920	921	922	923	924	925	926	927	928	929	930	931	932	933	934	935	936	937	938	939	940	941	942	943	944	945	946	947	948	949	950	951	952	953	954	955	956	957	958	959	960	961	962	963	964	965	966	967	968	969	970	971	972	973	974	975	976	977	978	979	980	981	982	983	984	985	986	987	988	989	990	991	992	993	994	995	996	997	998	999	1000



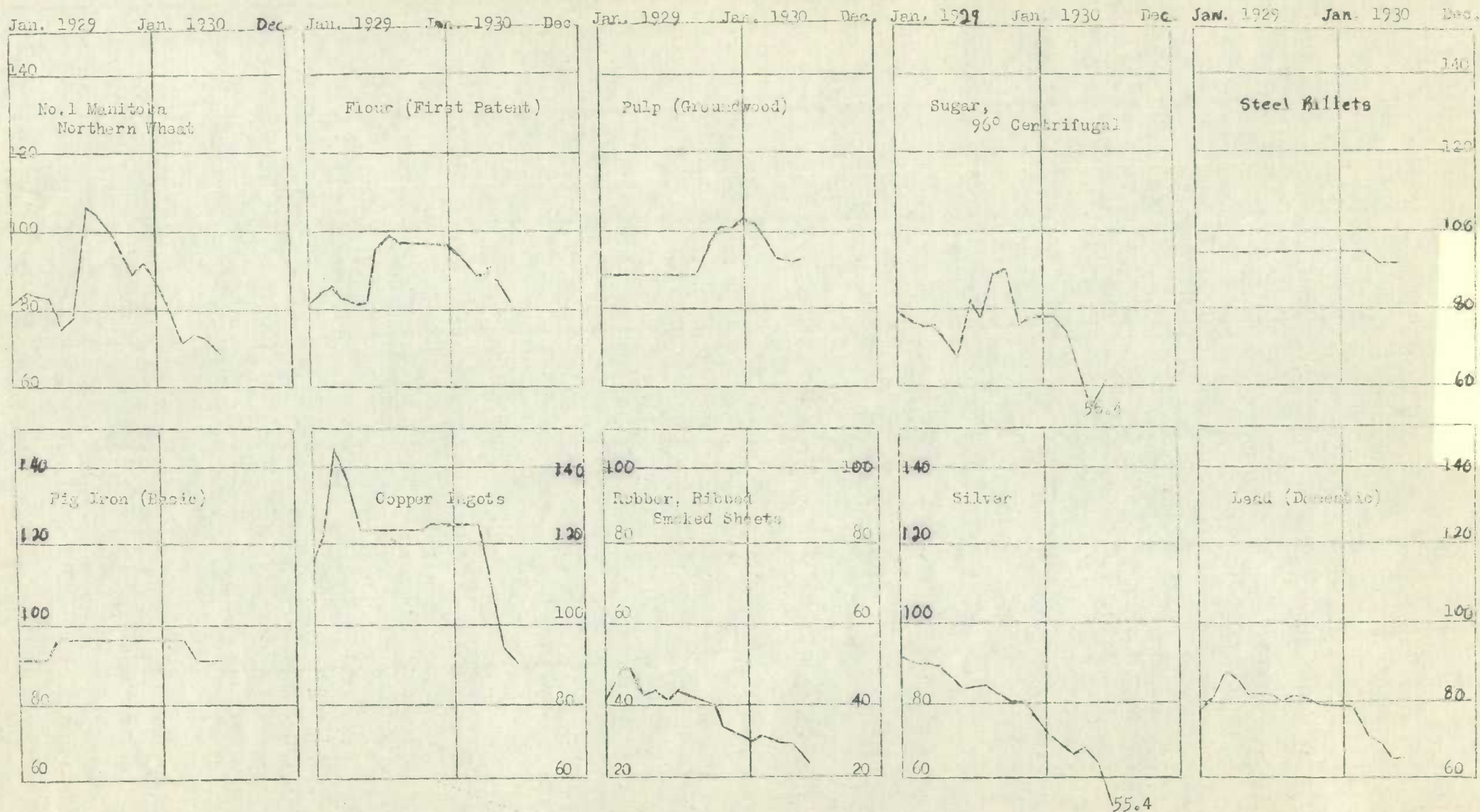
## INDEX NUMBERS OF COST OF LIVING AND RETAIL PRICES OF FOOD IN CANADA AND OTHER COUNTRIES.

	BULGARIA		HUNGARY		FINLAND		POLAND		ROUMANIA	AUSTRALIA	NEW ZEALAND	SOUTH AFRICA	EGYPT
Nature of Index	Cost of Living 12 Towns	Food 12 Towns	Cost of Living Budapest	Food Budapest	Cost of Living 21 Towns	Food 21 Towns	Cost of Living Warsaw	Food Warsaw	Cost of Living Entire Country	Food and Groceries 46 commodities 30 Towns	59 foods 26 Towns	Cost of Living	Cost of Living Cairo
Base Period	1914	1914	1913	1913	Jan.-June 1914	Jan.-June 1914	Jan. 1914	Jan. 1914	1914	1911	1909-13	1914	Jan. 1913 July, 1914
Date			(b)		(d)	(d)	(f) (h)	(f)		(i)			
1913			100	100									
1914 July	100	100			100	100	100	100	100	100	100	100	100
1915 "										131	112		
1916 "										130	119		118
1917 "					(e) 251					127	127	122	157
1918 "					(e) 588					132	139	131	184
1919 "	1.234	1.124			964					147	144	145	201
1920 "	1.858	1.610			931	1.013	11.173			187	167	179	237
1921 "	1.919	1.702			1.214	1.323	25.709	45.655	1.305	165	164	162	189
1922 "	2.619	2.257			1.142	1.144	51.7	74.7	1.633	146	144	135	167
1923 "	2.477	2.335			1.111	1.002	63.2	71.4	2.400	162	142	131	161
1924 "	2.833	2.650	(c) 116	145	1.154	1.052	127.2	189.1	2.660	149	148	133	158
1925 "	3.014	2.951	112	132	1.218	1.145	145.6	173.9	3.180	155	151	133	163
1926 "	2.886	2.760	103	115	154	144	178.1	207.0	3.340	162	149	131	159
1927 "	2.788	2.692	110	126	157	144	155.3 (g)	143.1	3.900	153	144	131	151
1928 "	2.911	2.819	118	131	161	151	122.6	144.1	4.086	154	147	131	151
1929 "	m108.6	m109.0	119	127	160	146	123.4	139.2	131.4 (m)	160	146	131	150
1929	(a)										(k)		
May	111.6	112.4	122	134	158	144	125.1	143.8	131.8	159	147	132	151
June	111.8	112.7	120	129	159	144	123.2	138.6	131.4	161	147	132	149
July	112.6	113.6	119	127	160	146	123.4	139.2	131.4	160	146	131	150
August	107.3	108.0	117	124	161	148	122.6	137.3	131.4	162	146	131	150
September	106.3	106.7	113	116	161	147	122.8	137.5	131.4	163	147	131	150
October	107.3	107.6	113	114	161	149	123.7	139.3	131.3	166	147	130	150
November	107.2	107.3	112	114	160	147	125.2	141.5	131.4	165	147	130	151
December	105.8	106.0	113	115	158	142	126.1	143.5	131.8	156	146	129	150
1930													
January	104.9	105.0	112	115	154	137	121.0	131.0	131.8	153	146	129	150
February	103.9	104.0	111	113	152	134	117.9	124.6	131.8	151	145	129	150
March	98.3	98.4	111	113	151	131	116.7	121.8	131.4		144	129	150
April	94.7	94.8	110	110	148	127	116.5	121.2	131.1		144	129	149
May			107	106	146	123	115.7	119.0	131.0				

(a) Excluding Clothing and Rent. (b) End of month. (c) December. (d) Since date of stabilization, gold index. (e) January. (f) Since 1922, Zloty prices. (g) Recalculated on basis of New Zloty (h) Last week of month. (i) June. (k) 15th of Month. (m) Since stabilization - gold index







Wholesale Prices, Years 1929 and 1930 (1926=100)

STATISTICS CANADA LIBRARY  
BIBLIOTHEQUE STATISTIQUE CANADA



1010693584