

CATALOGUE No. *202*

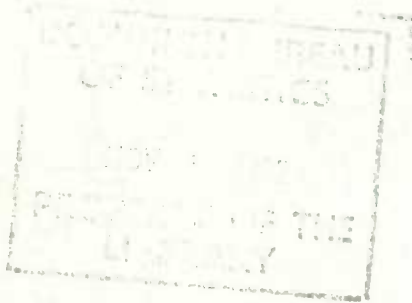
63-203

ANNUAL



1

FARM IMPLEMENT AND EQUIPMENT SALES 1961



Published by Authority of
The Honourable George Hees, Minister of Trade and Commerce

DOMINION BUREAU OF STATISTICS
Industry and Merchandising Division

November 1962
6543-520

Price: 50 cents

PUBLICATIONS RELATING TO THE WHOLESALE AND SERVICES TRADES

Catalogue number	Title	Price
(a) Monthly		
63-008	Wholesale Trade.....	per year \$1.00
(b) Quarterly		
63-009	Farm Implement and Equipment Sales.....	per year 1.00
(c) Annual		
63-201	Advertising Agencies25
63-203	Farm Implement and Equipment Sales.....	.50
63-204	Hotels50
63-205	Power Laundries, Dry Cleaning and Dyeing Plants50
63-206	Motion Picture Production25
63-207	Motion Picture Theatres and Film Distributors.....	.50
(d) Biennial		
<p align="center">Note: This biennial series was discontinued with the 1957 issue.</p> <p align="center">(It is planned to issue reports on wholesale operating results in the "Occasional" series following the 1961 census.)</p>		
63-416	Operating Results of Automotive Parts and Accessories Wholesalers25
63-417	Operating Results of Drug Wholesalers50
63-418	Operating Results of Dry Goods, Piece Goods and Footwear Wholesalers.....	.50
63-419	Operating Results of Food Wholesalers (Grocery, Fruit and Vegetable, Tobacco and Confectionery).....	.50
63-421	Operating Results of Hardware Wholesalers25
63-422	Operating Results of Household Appliances and Electrical Supply Wholesalers....	.25
63-423	Operating Results of Plumbing and Heating Supplies Wholesalers50
(c) Occasional		
63-501	Advertising Expenditures, 1954.....	.50
	Census of Canada, 1951, Volume VIII (Report of the 1951 census of wholesale and services trades)	3.00
63-502	Funeral Directors, 195625
63-507	Agents and Brokers, 1957-5950
63-508	Wholesale Trade Proper, 1958-59.....	.75

A complete list of publications of the Dominion Bureau of Statistics is available on request from the Publications Distribution Unit, Financial Control Section; D.B.S., or from the Queen's Printer, Ottawa.

FARM IMPLEMENT AND EQUIPMENT SALES

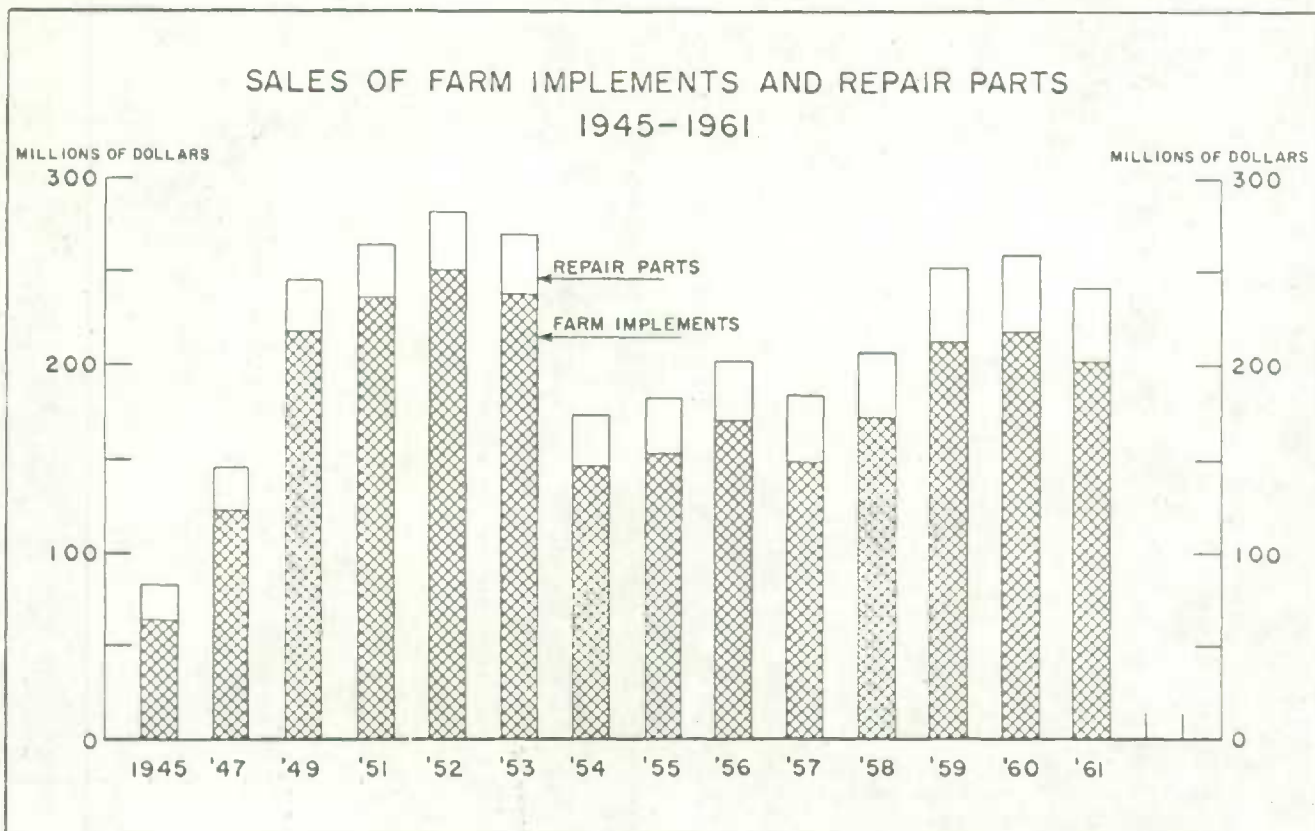
1961

Sales of new farm implements and equipment in Canada amounted to \$201,776,532 in 1961, a decrease of 7.2% from sales of \$217,465,183 in 1960. Sales of repair parts were \$39,643,554, a decrease of 4.0% from the figure of \$41,312,625 for 1960. The combined sales of new implements, equipment and repair parts, amounting to \$241,420,086, were 6.7% below 1960 sales of \$258,777,808. This is the first year since 1957 to show a decrease. For 1958, 1959 and 1960 sales increased by 12.1%, 21.9%, and 3.0% respectively over the previous year.

The provinces of Manitoba and Saskatchewan reported a decrease in sales of farm implements, equipment, and repair parts. All other regions reported increases but increases were not of sufficient magnitude to offset the decreased sales in the Prairie Provinces. In 1960 the provinces of Alberta and British Columbia indicated decreased sales from 1959 but increases in other provinces were more than enough to offset. All categories of machinery except tilling, cultivating and weeding machinery, planting, seeding and fertilizing machinery, barn equipment and spraying and dusting equipment indicated decreased sales for 1961.

The change made in 1957 (reporting unit sales to user by provinces) is continued in this report. Dollar sales are mainly at the wholesale level, i.e. cost to dealer. To avoid disclosure of an individual firm's figures, certain items are not shown. In some cases a figure representing three or more firms is also omitted in order to "cover" one of less than three firms. This report does not include the sales of used machinery, motor trucks, binder twine, export sales of Canadian manufacturers or industrial machinery and tractors not sold primarily for farm use.

Data on major groups, or main line implements, indicate the total goods manufactured and sold in Canada and goods imported and sold in Canada. Data on minor groups such as barn equipment, spraying and irrigation equipment indicate only the sales of such items made by companies primarily engaged in the farm trade; they do not include sales of companies whose major activity lies outside the farm equipment field but who may produce or sell such equipment.



MERCHANDISING AND SERVICES

TABLE 1. Farm Implement and Equipment Sales (Including Repair Parts), by Provinces, 1955-61
Value at wholesale prices

Province	1955	1956	1957	1958	1959	1960	1961	Percentage change 1961/60
Canada	181,576,393	202,592,127	183,721,649	205,993,039	251,118,817	258,777,808	241,420,086	- 6.7
Atlantic Provinces	7,843,010	8,485,890	6,369,173	6,897,786	7,691,565	9,068,834	9,713,387	+ 7.1
Quebec	24,454,624	26,630,438	27,954,950	30,455,335	31,688,077	31,537,729	35,369,344	+ 12.1
Ontario	50,053,037	49,265,892	46,152,225	50,060,232	58,611,525	58,174,743	60,131,048	+ 3.4
Manitoba	18,609,712	22,532,551	18,699,296	21,530,215	28,571,930	31,024,616	23,233,194	- 25.1
Saskatchewan	40,328,513	50,104,179	41,568,005	46,421,324	61,396,984	69,052,381	51,541,781	- 25.4
Alberta	34,380,094	39,676,998	38,213,577	45,504,705	56,426,827	53,335,647	54,118,752	+ 1.5
British Columbia	5,907,408	5,896,179	4,764,423	5,123,442	6,731,909	6,583,858	7,312,580	+ 11.1

TABLE 2. Sales of Repair Parts, by Provinces, 1955-61
Values at wholesale prices

Province	1955	1956	1957	1958	1959	1960	1961	Percentage change 1961/60
Canada	28,451,954	31,824,672	33,820,056	33,978,663	38,887,438	41,312,625	39,643,554	- 4.0
Atlantic Provinces	1,013,506	1,061,833	1,073,274	1,100,524	1,209,338	1,376,176	1,547,829	+ 12.5
Quebec	2,740,635	3,305,064	4,113,305	3,986,515	4,657,515	4,745,435	5,092,664	+ 7.3
Ontario	6,233,131	6,363,550	6,978,519	7,001,765	8,018,939	8,775,641	9,125,440	+ 4.0
Manitoba	3,535,101	3,944,453	3,985,737	3,835,412	4,490,250	5,148,130	4,275,442	- 17.0
Saskatchewan	7,893,314	9,355,538	9,430,614	9,516,116	10,876,455	11,693,143	9,926,386	- 15.1
Alberta	6,314,449	6,990,800	7,278,914	7,560,969	8,492,764	8,342,331	8,395,989	+ 0.6
British Columbia	721,778	803,434	959,693	977,362	1,142,177	1,231,769	1,279,804	+ 3.9

TABLE 3. Farm Implement and Equipment Sales, by Major Groups, Canada, 1957-61
Values at wholesale prices

Major group	1957	1958	1959	1960	1961	Percentage change 1961/60
	dollars					
All groups, totals	149,901,593	172,014,376	212,231,379	217,465,183	201,776,532	- 7.2
Tractors and engines	56,651,045	63,171,496	78,937,825	80,093,336	74,763,549	- 6.7
Ploughs	8,951,685	9,790,207	11,188,874	11,635,147	11,459,755	- 1.5
Tilling, cultivating and weeding machinery	7,844,897	9,655,652	11,919,868	12,649,509	12,938,912	+ 2.3
Planting, seeding and fertilizing machinery	6,702,950	7,103,526	7,894,126	7,872,633	8,224,200	+ 4.5
Haying machinery	23,566,449	26,256,593	30,655,070	30,544,277	29,297,992	- 4.1
Harvesting machinery	23,983,627	29,850,837	44,122,245	46,485,289	37,631,281	- 19.0
Machines for preparing crops for market or for use	5,555,649	6,101,837	7,509,637	6,261,514	6,232,718	- 0.5
Farm wagons, wagon trucks and sleighs	1,526,949	1,900,279	1,993,795	2,025,408	1,910,479	- 5.7
Barn equipment	2,863,306	3,521,308	3,868,853	4,094,987	4,534,541	+ 10.7
Dairy machinery and equipment	5,468,098	6,488,477	5,139,361	5,765,732	5,588,627	- 3.1
Spraying and dusting equipment (orchard or garden)	1,268,841	1,558,162	1,466,491	1,636,897	1,758,365	+ 7.4
Pumps and irrigation equipment and miscellaneous farm equipment	5,518,097	6,616,002	7,535,234	8,400,454	7,436,113	- 11.5

TABLE 4. Farm Implement and Equipment Sales in Canada and the Provinces, by Types, 1961
Values at wholesale prices

Type	Canada		Number of units sold						
	Number of units	Value	Atl. Prov.	Que.	Ont.	Man.	Sask.	Alta.	B.C.
		\$							
Tractors and engines									
Tractors - farm use: 100% corrected belt h.p.									
Wheel type:									
9 to 29 h.p. - Diesel	76	138,319	1	33	27	1	-	-	1
Other	530	909,940	58	92	309	1	1	1	20
30 to 34 h.p. - Diesel	3,501	7,392,114	305	1,518	1,198	99	49	180	152
Other	2,311	4,786,868	289	760	870	50	80	159	103
35 to 39 h.p. - Diesel	3,316	7,717,311	247	1,226	1,371	67	28	170	207
Other	1,113	2,856,473	83	353	419	62	25	89	82
40 to 44 h.p. - Diesel	354	1,032,876	11	128	162	20	1	19	1
Other	904	2,292,734	38	317	276	48	76	126	21
45 to 49 h.p. - Diesel	97	319,830	1	1	1	1	1	1	1
Other	1,008	2,898,272	71	155	377	60	104	191	50
50 to 54 h.p. - Diesel	2,665	8,360,927	153	452	940	302	343	381	94
Other	542	1,803,087	1	40	159	43	90	189	1
55 to 59 h.p. - Diesel	1,061	4,248,844	1	1	65	221	387	337	18
Other	722	2,608,891	1	1	58	115	224	276	22
60 to 69 h.p. - Diesel	2,077	8,771,844	17	63	92	292	921	680	12
Other	303	1,141,834	1	1	23	11	123	135	4
70 h.p. & over - Diesel	2,857	13,972,093	1	1	54	307	1,236	1,205	21
Other	83	365,367	-	-	1	-	1	69	-
Total wheel type	23,520	71,415,624	1,353	5,195	6,427	1,730	3,742	4,248	825
Crawler type:									
Under 35 h.p.	422	1,501,219	44	133	106	1	1	40	44
35 to 49 h.p.	77	362,787	1	1	1	1	1	1	1
50 h.p. and over	14	134,877	-	1	1	1	1	1	-
Garden tractors:									
One and two wheel	528	141,430	1	1	1	1	1	1	1
Three and four wheel	505	226,727	63	110	282	8	7	19	16
Gas engines and power units	7,613	417,186	1	1,093	2,793	1,034	803	1,154	1
All other tractors and engines	-	563,699	-	-	-	-	-	-	-
Group total	-	74,763,549	-	-	-	-	-	-	-
Ploughs									
Mouldboard ploughs:									
Tractor drawn:									
One and two furrow	121	34,701	26	1	39	15	1	12	18
Three furrow	513	208,071	75	27	248	28	3	122	10
Four furrow	448	270,464	14	1	140	59	25	196	1
Five furrow or larger	236	180,342	12	-	34	49	16	111	14
Tractor mounted:									
One and two furrow	3,778	739,200	406	2,444	728	13	6	46	135
Three furrow	4,497	1,512,741	242	1,190	2,749	48	9	212	47
Four furrow or larger	517	252,668	24	47	306	19	4	94	23
Disc ploughs:									
Tractor drawn	34	33,245	-	-	1	1	1	10	-
Tractor mounted	118	34,883	-	52	51	-	1	1	9
One-way discs	235	124,877	1	-	1	10	145	46	1
Diskers - Under 10 ft.									
10 ft. and over	4,945	5,075,646	-	-	-	880	2,801	1,252	32

See footnote page 10.

TABLE 4. Farm Implement and Equipment Sales in Canada and the Provinces, by Types, 1961 - Continued
Values at wholesale prices

Type	Canada		Number of units sold						
	Number of units	Value	Atl. Prov.	Que.	Ont.	Man.	Sask.	Alta.	B.C.
Ploughs - Concluded									
Seed boxes for one-way discs	374	55,015	-	-	-	1	1	1	1
Seed boxes for diskers	2,701	888,822	-	-	-	503	1,880	1	1
Breaker ploughs	2	2	-	-	-	-	-	2	2
Rotary tillers and cultivators:									
Garden (under 10 h.p. approx.)	13,456	1,356,058	305	1,119	4,085	1,376	1,763	2,992	1,816
Field (10 h.p. and over, P.T.O. or engine)	610	264,974	327	232	1	1	-	1	-
All other ploughs	-	153,839	-	-	-	-	-	-	-
Group total	-	11,459,755	-	-	-	-	-	-	-
Tilling, cultivating and weeding machinery									
Harrows:									
Drag harrows (sections)	42,780	751,641	318	840	5,067	10,297	16,127	9,271	860
Spring tooth harrows (sections)	6,449	460,629	837	1,243	2,163	560	670	874	102
Disc harrows:									
Tractor drawn - Single	238	57,265	-	1	1	-	-	1	1
Tandem: Wheel type	1,607	886,454	25	84	807	33	55	553	50
Other	1,880	543,480	55	317	538	1	305	554	1
Tractor mounted - Single	52	13,287	-	1	-	1	1	1	1
Tandem	1,863	528,311	80	477	754	16	106	248	182
Rotary hoes - Sections - (ground driven, teeth or wheel) ..	340	42,371	1	20	297	-	-	1	1
Wheel-type folding drawbars for harrows and rotary hoe sections	3,019	326,223	1	1	72	804	1,621	466	1
Land rollers	42	10,957	1	1	1	-	-	-	-
Soil pulverizers and packers (8 ft. and over)	400	88,935	-	-	312	1	1	1	1
Soil pulverizers and packers (incl. sections) under 8 ft.	4,525	332,634	1	-	1	280	3,378	783	-
Cultivators:									
Row crop cultivators (corn, and potatoes):									
Horse or tractor drawn - One row	2	2	-	2	2	-	-	-	-
Tractor Mounted - One row	458	51,947	1	90	329	1	-	1	1
Two row	1,181	260,450	185	160	799	7	1	1	28
Four, six and eight row	131	48,391	1	6	102	1	1	8	1
Row crop cultivators (beet, bean, etc.)	112	16,175	1	1	58	1	-	1	1
Field cultivators:									
Tractor drawn - Conventional type	1,390	395,365	14	44	1,013	57	140	115	7
Heavy duty, deep tillage type	7,288	5,109,155	-	25	74	1,080	3,533	2,544	32
Tractor mounted	1,867	373,870	42	167	833	531	73	175	46
Tool bar carriers - Tractor drawn	633	239,694	20	1	-	1	1	251	1
Tractor mounted	402	63,212	92	33	105	25	26	80	41
Rod weeders	5,132	1,564,279	-	-	-	1	3,325	1,202	1
Field blade weeders (tractor drawn or mounted)	1,048	309,608	-	-	1	1	1	1	-
All other cultivating and tillage machinery	-	464,579	-	-	-	-	-	-	-
Group total	-	12,938,912	-	-	-	-	-	-	-
Planting, seeding and fertilizing machinery									
Corn planters - Horse or tractor drawn	211	82,219	-	1	193	1	-	1	1
Tractor mounted	431	71,606	1	81	293	1	-	1	4
Potato planters	166	137,822	56	40	45	1	1	1	13
Vegetable seeders (radish, onions, lettuce, etc.)	2	2	-	-	1	1	2	2	2
Transplanters	692	239,277	1	1	593	-	-	1	1
Grain and fertilizer drills (combination)	1,000	613,660	56	346	566	5	1	1	19
Grain drills - Plain	964	607,051	15	122	326	108	76	294	23
Press	1,816	1,540,271	-	-	-	244	684	875	13
Broadcast seeders, horse or tractor drawn	1,405	78,929	1	1	766	1	1	1	1
Fertilizer and lime sowers, horse or tractor drawn	1,771	431,291	242	551	551	24	31	283	89

See footnotes page 10.

TABLE 4. Farm Implement and Equipment Sales in Canada and the Provinces, by Types, 1961 - Continued
Values at wholesale prices

Type	Canada		Number of units sold						
	Number of units	Value	Atl. Prov.	Que.	Ont.	Man.	Sask.	Alta.	B.C.
Planting, seeding and fertilizing machinery - Concluded									
Amblyous ammonia applicators	1	1	-	1	1	-	-	-	1
Manure spreaders:									
Power take-off, 2-wheel	3,177	1,875,997	130	613	1,674	148	143	327	142
4-wheel	346	214,945	1	1	118	1	26	125	1
Ground drive, 2-wheel	3,788	1,666,762	363	1,286	1,339	180	175	359	86
4-wheel	39	19,873	-	1	1	1	1	1	-
All other planting, seeding and fertilizing machinery	-	624,497	-	-	-	-	-	-	-
Group total	-	8,224,200	-	-	-	-	-	-	-
Haying machinery									
Mowers:									
Cutter bar type:									
Ground driven (horse or tractor drawn)	20	3,337	-	1	-	1	1	-	6
Power take-off - Tractor drawn	4,058	1,468,934	188	304	1,049	552	903	989	73
Semi-mounted	1,825	629,362	45	740	343	239	370	558	30
Fully-mounted	6,980	2,201,596	590	2,949	1,894	243	273	596	413
Rotary type (drawn or mounted)	609	232,632	27	49	318	27	46	41	101
Dump rakes	138	25,328	-	1	-	1	11	1	1
Side delivery rakes:									
Cylinder type:									
Ground driven (horse or tractor drawn)	7,501	2,866,902	413	1,944	1,604	915	1,186	1,338	101
Power take-off - Semi-mounted	1,240	541,229	26	100	183	69	91	735	38
Fully-mounted	818	313,082	104	244	216	37	31	106	80
Finger wheel type:									
Ground driven (horse or tractor drawn)	934	342,863	-	1	1	1	1	1	1
Power take-off - Semi-mounted	1	1	1	-	-	-	-	-	-
Fully-mounted	-	-	-	-	-	-	-	-	-
Hay conditioners	2,505	1,598,661	135	653	1,600	18	10	44	45
Hay loaders	23	15,418	-	1	-	1	1	1	1
Hay or stook sweeps, (tractors)	1	1	-	-	-	1	-	1	-
Automatic hay balers:									
Power take-off - Wire:									
Twine	73	142,228	1	1	1	-	-	-	-
Twine	11,168	15,793,008	644	2,067	3,155	975	1,854	2,158	315
Engine-driven - Wire:									
Twine	40	94,258	1	27	-	6	1	-	-
Twine	960	1,337,933	71	214	301	62	85	181	68
Field bale loaders	586	113,558	1	111	65	84	84	216	1
Baled hay conveyors - Installed:									
Portable	1,217	181,869	-	1	1	-	-	-	-
Portable	8,135	849,168	1	2,184	2,817	891	1,045	845	1
All other haying machinery	-	546,428	-	-	-	-	-	-	-
Group total	-	29,297,992	-	-	-	-	-	-	-
Harvesting Machinery									
Combines:									
Pull type (by header size):									
Under 8 ft. P.T.O.	1,311	2,754,054	65	147	937	33	1	89	1
Engine driven	146	380,189	1	25	8	1	17	1	1
8-10 ft. incl. P.T.O.	362	1,072,350	36	1	1	64	121	85	1
Engine driven	33	105,027	-	-	1	1	1	1	-
Over 10 ft. P.T.O.	1	1	-	-	1	1	1	1	1
Engine driven	1	1	-	-	-	1	1	1	1
Self-propelled	3,896	21,980,066	50	280	858	332	911	1,423	42
Swathers and windrowers:									
Tractor drawn	1,911	1,648,829	1	8	36	295	714	849	1
Self-propelled	2,310	4,170,910	-	72	233	448	832	700	25
Grain binders	-	-	-	-	-	-	-	-	-

See footnotes page 10.

TABLE 4. Farm Implement and Equipment Sales in Canada and the Provinces, by Types, 1961 - Continued
Values at wholesale prices

Type	Canada		Number of units sold						
	Number of units	Value	Atl. Prov.	Que.	Ont.	Man.	Sask.	Alta.	B.C.
Harvesting machinery - Concluded									
Corn pickers:									
Tractor drawn	210	265,092	-	-	210	-	-	-	-
Tractor mounted and self-propelled	87	166,547	-	-	87	-	-	-	-
Picker sheller (combination)	35	68,416	-	1	1	-	-	-	-
Forage crop harvesters:									
Basic machine only (all types)	1,583	1,637,710	23	190	693	192	90	210	185
Attachments:									
Cutter bar	183	102,202	1	67	64	12	11	12	1
Pick-up	598	240,463	1	33	323	45	94	83	1
Row crop	461	206,611	1	73	297	11	1	24	1
Forage crop blowers	366	236,101	-	74	246	1	1	1	38
Potato diggers:									
Ground driven	33	11,791	1	1	1	-	1	-	-
Power take-off - One row	163	96,191	1	1	1	1	-	1	1
Two row	155	137,702	1	36	1	1	-	-	1
Potato harvesters (pickers and combines)	252	306,926	135	67	1	1	-	-	-
Shredders and cutters (for corn stalks, orchard prunings, etc.)	468	232,812	1	25	375	10	1	8	36
Beet lifters, harvesters and loaders	66	155,240	-	17	1	1	-	38	-
All other harvesting machinery, such as headers, push harvesters, etc.	-	1,656,072	-	-	-	-	-	-	-
Group total	-	37,631,281	-	-	-	-	-	-	-
Machines for preparing crops for market or for use									
Threshers	94	175,618	-	1	1	-	-	-	-
Ensilage cutters (combination cutter blower)	17	11,740	-	1	1	1	1	11	-
Feed or roughage cutters, hand and power	1	1	-	1	1	-	-	-	-
Corn shellers - Power	24	8,786	-	1	1	-	-	-	-
Grain grinders:									
6 in. or less	317	4,378	1	1	1	1	1	1	1
Over 6 in.	2,973	186,713	1	1	67	849	161	1,889	1
Rollers or crushers (grain)	1,120	264,864	40	64	547	148	174	147	-
Cleaners for grain:									
Hand (fanning mills)	1	1	-	-	-	1	1	1	-
Power	1,600	277,139	1	1	1	278	460	211	-
Hammer mills - Electric driven	77	15,742	1	1	47	1	1	1	-
P.T.O.	770	261,944	1	39	252	91	143	233	1
Belt driven	689	180,114	1	20	201	199	74	171	1
Feed mixers	315	180,323	1	22	114	1	1	132	-
Sorters and graders:									
Potatoes (mainly)	31	16,269	1	1	1	-	-	-	-
Fruit and vegetable	1	1	-	-	1	-	-	-	-
Crop dryer with heating units (for grain, hay, etc.)	69	175,892	1	1	32	-	1	1	-
Tractor loaders	7,567	2,725,771	405	1,680	2,594	746	987	1,003	152
Grain elevators - Bucket type	1,935	401,304	63	261	1,064	1	1	64	1
Auger type	10,618	956,502	113	883	2,923	2,157	1,964	2,480	98
Other elevators	636	196,479	1	1	412	-	1	1	1
All other machines for preparing crops for market or use, such as waxers, washers, vegetable tying machines, etc.	-	193,140	-	-	-	-	-	-	-
Group total	-	6,232,718	-	-	-	-	-	-	-

See footnotes page 10.



TABLE 4. Farm Implement and Equipment Sales in Canada and the Provinces, by Types, 1961 - Continued
Values at wholesale prices

Type	Canada	
	Number of units sold	Value
		\$
Farm wagons, wagon trucks and sleighs		
Wagon gears - Wood and steel wheels	3,451	393,012
Pneumatic wheels	6,182	872,589
Wagon boxes	568	120,763
Forage boxes	478	322,855
All other farm wagons, wagon trucks and sleighs	-	201,260
Group total	-	1,910,479
Barn equipment		
Feed and litter carriers	3,112	186,033
Hay forks and slings	2	2
Hay fork carriers or cars	2	2
Stable stalls and livestock pens (without stanchion units)	11,891	797,825
Cattle stanchions	56,699	426,488
Milking room stalls	541	81,095
Stock watering cups and bowls	94,259	537,879
Gutter cleaners (power operated)	2,756	1,945,115
Miscellaneous barn equipment	-	560,106
Group total	-	4,534,541
Dairy machinery and equipment		
Milking machines:		
Vacuum pumps only	4,442	627,510
Milker pail units	9,310	904,173
Portable units	649	91,625
Pipe line units	571	44,066
Milk pipe line (feet)	18,195	57,803
Cream separators - 300 lb. and under	865	48,996
Over 300 lb.	7,094	976,846
Farm milk coolers:		
Electrical refrigeration type:		
Standard unit	298	106,408
Bulk unit	1,334	2,221,631
All other dairy machinery and equipment	-	509,569
Group total	-	5,588,627

See footnote page 10.

TABLE 4. Farm Implement and Equipment Sales in Canada and the Provinces, by Types, 1961 — Concluded
Values at wholesale prices

Type	Canada	
	Number of units sold	Value
		\$
Spraying and dusting equipment (Orchard or garden)		
Sprayers:		
Field (weed, low volume, low pressure)	5,468	1,116,177
Row crop (all types)	570	169,050
Orchard:		
High pressure — Under 15 gal. p.m. capacity	62	31,456
15 gal. and over p.m. capacity	19	47,176
Air blast sprayers	59	176,803
Air blast attachments	3	2,364
All other spraying and dusting equipment	—	215,339
Group total	—	1,758,365
Pumps and irrigation equipment		
Sprinkler irrigation equipment:		
Pump and engine units — Under 5 h.p., under 50 gals. p.m.	6,257	849,821
5 h.p. or over, 50 gals. p.m. and over	279	188,114
Irrigation pipe and couplings (feet of pipe)	655,674	426,123
Irrigation sprinkler heads	8,661	39,091
All other pumps and irrigation equipment used for farm purposes including hand pumps, windmills, etc.	—	794,712
Group total	—	2,297,861
Miscellaneous farm equipment		
Wagon unloaders (including automatic or self unloaders)	489	411,796
Silo unloaders	209	191,363
Post-hole diggers (tractor or power driven)	1,762	285,667
Land levellers and smoothers	1,899	423,005
Pull type ditchers	72	18,322
Poultry farm equipment	—	823,126
Metal grain storage bins	817	215,729
Miscellaneous equipment	—	2,760,244
Group total	—	5,138,252

¹ Withheld to avoid disclosure of individual results.

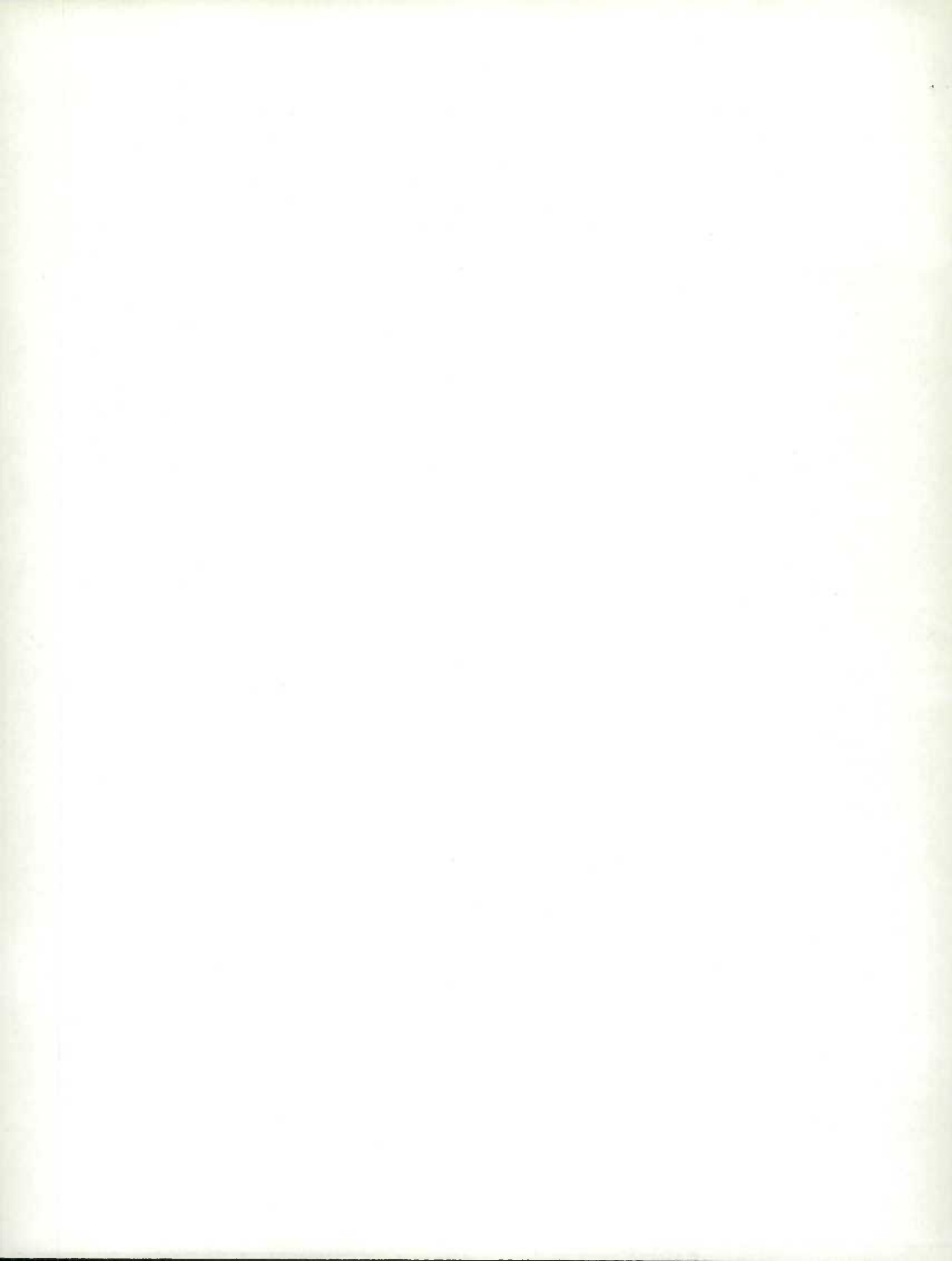
² Included in "All other" or miscellaneous category of its group.

TABLE 5. Farm Implement and Equipment Sales, Selected Types, Canada, 1955-61

Values at wholesale prices

Type	1955		1956		1957		1958		1959		1960		1961	
	No. of units	Value	No. of units	Value	No. of units ¹	Value	No. of units ¹	Value	No. of units ¹	Value	No. of units ¹	Value	No. of units ¹	Value
		\$'000		\$'000		\$'000		\$'000		\$'000		\$'000		\$'000
Tractors and engines, totals	-	58,760	-	63,262	-	56,651	-	63,171	-	78,938	-	80,093	-	74,764
Tractors - Farm use:														
Wheel type	25,825	52,837	23,627	54,874	21,730	52,395	23,184	58,576	25,437	74,517	25,399	75,634	23,520	71,416
Crawler type	1,429	4,310	2,213	6,958	654	2,523	622	2,579	536	2,112	766	3,028	513	1,999
Ploughs, totals	-	8,225	-	8,018	-	8,952	-	8,790	-	11,189	-	11,635	-	11,460
Mouldboard ploughs, tractor drawn:														
One and two furrow	1,523	308	1,126	240	936	204	765	175	598	160	242	65	123	34
Three furrow	2,046	611	1,647	482	1,544	511	1,232	400	1,053	404	555	241	513	206
Four furrow or larger	806	364	856	383	560	268	605	304	619	393	708	480	684	451
Mouldboard ploughs, tractor mounted	8,508	1,510	7,225	1,578	7,737	1,373	8,412	1,803	8,241	1,982	8,620	2,242	8,792	2,505
One-way discs:														
Under 5 ft.	219	77	1,683	724	223	63	29	10	2	2	2	2	235	125
5 ft. and over	1,104	590			1,552	909	470	279	689	606	834	869		
Diskers:														
Under 10 ft.	607	350	437	238	209	162	804	544	590	360	312	264	300	276
10 ft. and over	3,850	3,026	3,769	3,014	4,285	3,463	4,290	3,930	4,638	4,631	4,594	4,827	4,945	5,076
Tilling, cultivating and weeding machinery, totals	-	7,016	-	7,070	-	7,845	-	9,656	-	11,920	-	12,650	-	12,939
Drag harrows (sections)	34,685	731	37,430	790	40,225	817	32,623	741	42,326	787	43,904	828	42,780	752
Spring tooth harrows (sections)	7,378	293	5,964	308	5,929	324	4,860	289	5,156	318	5,700	377	6,449	461
Disc harrows tractor drawn	6,080	1,464	4,689	1,344	4,368	1,252	4,653	1,597	3,925	1,517	3,989	1,539	3,725	1,487
Soil pulverizers and packers	2,594	210	1,618	148	2,510	226	3,502	311	4,796	441	4,964	416	4,925	422
Cultivators:														
Row crop	2,536	441	2,431	428	1,810	309	1,815	381	1,834	394	1,830	436	1,950	390
Field	10,314	3,147	8,965	3,231	9,053	3,754	10,773	4,861	11,905	6,093	11,625	6,251	10,545	5,878
Rod weeders	709	129	1,036	185	1,318	291	2,372	640	4,055	1,076	4,730	1,400	5,132	1,564
Planting, seeding and fertilizing machinery, totals	-	5,341	-	6,094	-	6,703	-	7,104	-	7,894	-	7,893	-	8,224
Corn planters	1,169	272	898	203	912	222	648	154	962	206	749	195	642	154
Grain and fertilizer drills (combination)	1,512	736	1,627	795	1,015	561	1,357	789	1,434	793	895	560	1,000	614
Grain drills:														
Plain	1,294	581	1,725	808	1,467	763	1,058	559	956	582	1,166	733	964	607
Press	1,186	760	1,618	1,062	2,059	1,286	1,798	1,276	1,937	1,524	1,811	1,502	1,816	1,540
Fertilizer and lime sowers	1,129	213	1,145	229	977	264	1,573	335	1,802	371	1,417	364	1,771	431
Manure spreaders:														
Power take-off, 2-wheel	1,404	625	1,477	695	1,510	805	2,501	1,269	2,634	1,521	2,510	1,488	3,177	1,876
4-wheel	184	86	157	73	247	127	260	143	498	220	239	142	346	215
Ground drive, 2-wheel	4,138	1,358	4,883	1,843	5,017	1,869	4,872	1,792	4,357	1,897	4,232	1,980	3,788	1,687
Haying machinery, totals	-	19,820	-	27,245	-	23,587	-	26,257	-	30,655	-	30,544	-	29,298
Mowers:														
Cutter bar type:														
Ground driven (horse or tractor drawn)			956	212	1,596	427	952	299	347	111	48	8	20	3
Power take-off - Tractor drawn			442	140	1,800	494	2,911	977	4,257	1,558	4,180	1,460	4,058	1,469
Semi-mounted	12,364	2,933	6,043	1,570	3,230	969	4,830	1,403	4,652	1,600	3,240	1,206	1,825	629
Fully-mounted			5,326	1,323	5,750	1,442	4,549	1,270	5,394	1,594	6,408	1,926	6,960	2,202
Rotary type (drawn or mounted)			177	67	266	102	277	98	335	124	356	127	609	233
Hay conditioners	-	-	-	-	-	-	-	-	838	557	2,439	1,530	2,505	1,599
Hay loaders	1,667	412	975	257	792	144	567	106	214	55	64	17	23	15
Dump rakes	1,294	126	1,032	108	904	97	394	57	285	50	342	79	138	25
Side delivery rakes (all types)	9,904	2,906	11,634	3,652	10,559	3,559	11,390	4,066	12,104	4,655	11,777	4,458	10,534	4,077

See footnotes, page 12.

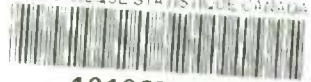


MERCHANDISING AND SERVICES

TABLE 5. Farm Implement and Equipment Sales, Selected Types, Canada, 1955-61 - Concluded
Values at wholesale prices

Type	1955		1956		1957		1958		1959		1960		1961	
	No. of units	Value	No. of units	Value	No. of units ¹	Value	No. of units ¹	Value	No. of units ¹	Value	No. of units ¹	Value	No. of units ¹	Value
		\$'000		\$'000		\$'000		\$'000		\$'000		\$'000		\$'000
Haying machinery - Concluded:														
Automatic hay balers:														
Power take off:														
Wire	4,980	6,160	53	98	43	99	37	64	51	98	45	88	73	142
Twine			6,474	10,339	8,121	10,419	9,377	11,740	10,942	14,770	11,333	15,693	11,168	15,793
Engine driven:														
Wire	159	350	186	404	116	289	96	220	64	139	31	75	40	94
Twine	2,511	3,671	3,453	4,960	2,630	3,988	1,934	2,999	1,439	2,415	865	1,543	960	1,338
Harvesting machinery, totals	--	27,564	--	34,753	--	23,984	--	29,651	--	44,122	--	46,485	--	37,631
Combines:														
- Pull type:														
Under 8 ft. P.T.O.	2,417	3,817	2,617	5,048	1,268	1,817	1,206	1,883	1,120	1,984	1,089	2,151	1,311	2,754
Engine					465	809	426	841	344	833	221	571	146	380
8-10 ft. incl. P.T.O.					302	703	400	1,007	536	1,499	664	1,874	362	1,072
Engine	209	569	172	491	216	646	100	335	33	105				
Over 10 ft. P.T.O.	464	1,056	292	801	192	648	295	947	296	938	446	1,425	'	'
Engine									157	576	102	380	'	'
- Self-propelled:														
Ten feet and under	503	1,874	641	2,705	565	2,596	853	3,682	1,358	5,611	1,427	6,629	3,896	21,980
Over ten feet	3,146	13,965	3,238	16,752	1,873	9,737	2,297	12,407	3,542	21,352	3,789	22,158		
Swathers or windrowers	4,491	3,252	6,085	5,723	3,421	3,204	3,534	3,876	5,488	6,344	4,744	5,894	4,221	5,820
Grain binders	791	413	705	370	228	164	'	'	'	'	'	'	'	'
Forage crop harvesters, (all types)	1,465	1,839	1,455	1,917	1,537	1,735	1,467	1,716	1,592	1,790	1,414	1,788	1,583	1,638
Machines for preparing crops for market or use, totals	--	4,933	--	4,768	--	5,556	--	6,102	--	7,510	--	6,262	--	6,233
Threshers	533	1,005	364	556	263	376	259	383	155	244	95	190	94	176
Ensilage cutters	345	191	226	118	112	63	112	68	35	20	17	10	17	12
Grain grinders:														
8 in. or less	153	24	70	11	318	27	379	14	385	8	316	8	317	4
Over 6 in.	3,776	235	3,127	189	2,287	162	2,709	187	2,190	168	1,411	104	2,973	187
Cleaners for grain:														
Hand and power	2,223	315	2,496	371	2,928	428	1,471	302	1,354	285	1,599	277	1,433	282
Hammermills	2,793	558	1,997	439	2,137	488	2,951	765	2,622	799	1,503	447	1,536	458
Feed mixers	1,976	98	1,988	108	1,852	91	241	76	106	28	302	156	315	180
Dairy machinery and equipment, totals	--	3,953	--	4,787	--	5,468	--	6,488	--	5,139	--	5,766	--	5,589
Milking machines:														
Vacuum pumps	5,396	517	4,824	530	4,554	545	6,036	1,011	6,091	858	4,714	664	4,442	628
Milker pail units	9,644	878	10,902	1,002	9,804	917	11,241	1,124	10,101	1,124	10,842	1,164	9,310	904
Cream separators:														
300 lb. and under	1,002	32	1,523	59	752	35	851	56	909	65	926	63	865	49
Over 300 lb.	11,148	1,509	9,832	1,558	7,878	1,203	8,552	1,213	7,547	996	5,375	942	7,094	977
Farm milk coolers (electrical refrigeration type):														
Standard unit	1,686	897	865	266	787	337	1,241	469	400	194	536	199	298	106
Bulk unit			585	1,138	1,146	2,200	1,308	2,404	1,045	1,848	1,215	2,154	1,334	2,222

¹ Number of units sold represent sales to user. In previous years, units sold were suppliers' sales to dealer.
² Withheld to avoid disclosure of individual results.



1010678961

953

238,05
21,82
269,87 ✓

52

250,28
31,23
281,51 ✓

51

235,62
23,77
264,39 ✓