

64 001

Published by Authority of Hon. W. D. Euler, M.P.,
Minister of Trade and Commerce
DEPARTMENT OF TRADE AND COMMERCE
DOMINION BUREAU OF STATISTICS
GENERAL STATISTICS BRANCH

NOV 18

Issued November 16, 1935.

Dominion Statistician: R. H. Coats, LL.D., F.R.S.C., F.S.S. (Hon.)
In Charge Employment Statistics: M. E. K. Roughsedge.

BUILDING PERMITS FOR OCTOBER, 1935, WITH COMPARATIVE STATEMENTS FOR SEPTEMBER, 1935, AND OCTOBER, 1934, AND CUMULATIVE FIGURES FOR FIRST TEN MONTHS, 1920-1935.

The estimated value of the building authorized by 58 cities during October was \$4,020,308; this was an increase of \$698,282 or 21.0 p.c., as compared with the September total of \$3,322,026, and of \$1,422,284 or 54.7 p.c., as compared with the aggregate of \$2,598,024 for October, 1934.

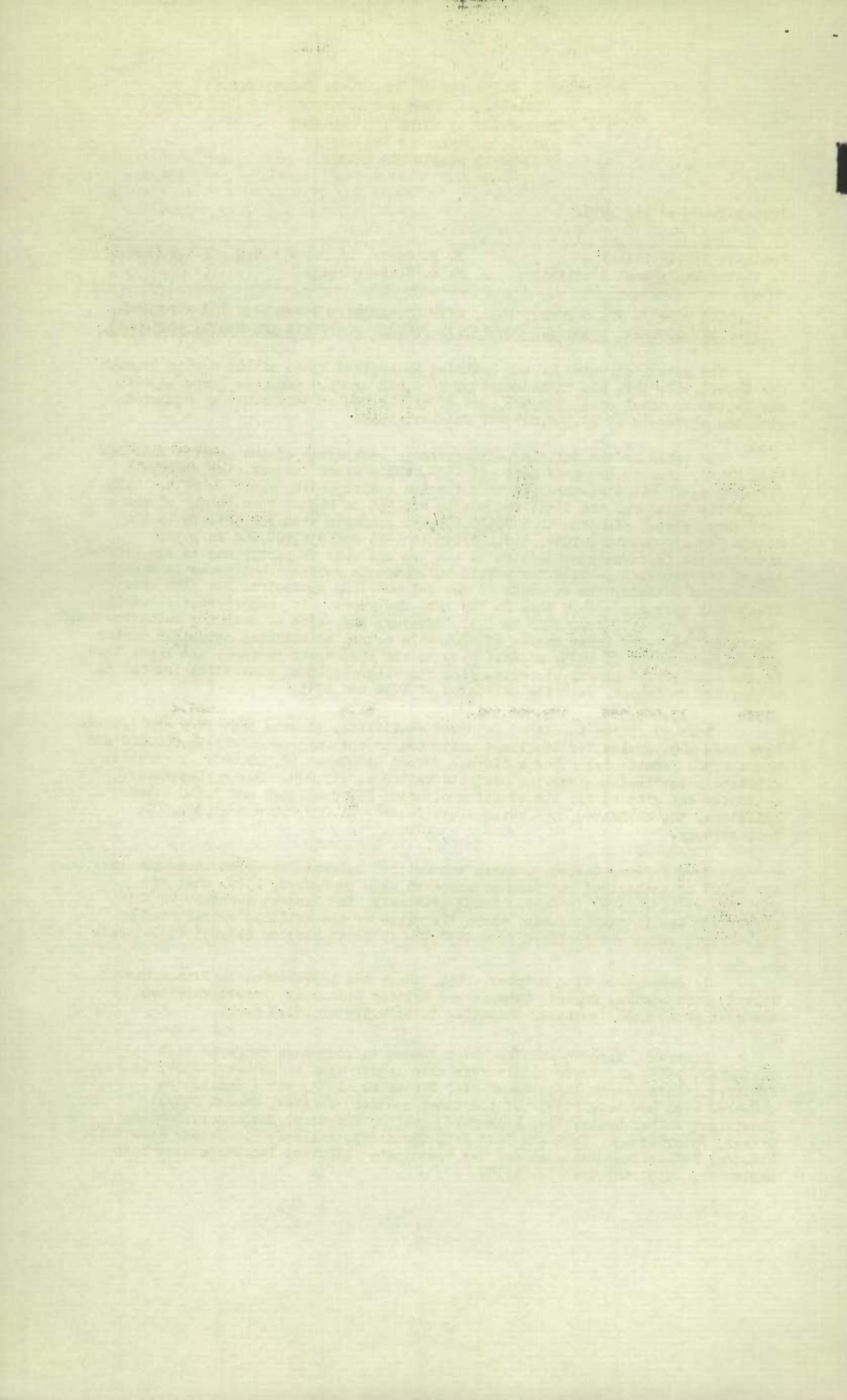
The value of the building authorized in each month of the present year has been higher than in the same month of 1934, while since January, the aggregate for each month has also exceeded that for the corresponding month in 1933. The cumulative total for the first ten months of 1935 is higher than in any of the last three years, standing at \$40,530,687, as compared with \$22,313,170 in the months January-October, 1934, \$18,169,066 in 1933 and \$38,196,769 in 1932. Although the improvement indicated in the present year is partly due to the granting of construction permits for public buildings in several centres as an unemployment relief measure, the movement in general building operations has also been distinctly more favourable than in the last few years. In comparison with earlier years of the record, from 1920 to 1931, however, the value of building authorizations continues low. The index number of wholesale prices of building materials during the elapsed months of 1935, at 82.1 p.c. of the 1926 basic average, was lower than in the same period of any preceding year for which building statistics for the 61 cities are on record, with the exception of 1932 and 1933.

Some 50 cities furnished detailed statistics, showing that they had issued more than 400 permits for dwellings estimated to cost approximately \$1,200,000 and about 1,500 permits for other buildings valued at almost \$2,500,000. In addition, 2 cities authorized engineering projects valued at \$33,244. During September, authority was granted for the erection of about 235 dwellings and 1,600 other buildings, the estimated cost being approximately \$1,000,000 and \$1,700,000, respectively.

Nova Scotia, Quebec, Ontario and British Columbia recorded increases in the value of authorized building as compared with September, 1935, that of \$673,237 or 115.4 p.c. in Quebec being greatest. The largest decrease in this comparison was in Saskatchewan, where the value of the building represented by the permits taken out declined from \$490,984 in September, to \$17,855 in October.

In comparison with October, 1934, there was improvement in Prince Edward Island, Nova Scotia, Quebec, Ontario and British Columbia. Quebec reported the most pronounced increase, amounting to \$632,374 or 101.3 p.c.

Montreal, Toronto and Vancouver showed increases as compared with September, 1935, and their totals were also higher than in October, 1934; in Winnipeg, there was an improvement over September, 1935, but a decline as compared with October, 1934. Of the other centres, Halifax, Quebec City, Shawinigan Falls, Belleville, Brantford, Guelph, Kingston, Kitchener, London, Ottawa, Peterborough, York and East York Townships, Welland, Riverside, Woodstock, Brandon, Lethbridge, Kamloops and New Westminster reported increases over both September, 1935, and October, 1934.



CUMULATIVE RECORD FOR FIRST TEN MONTHS, 1935.

The following table gives the value of the building authorized by 58 cities during October and in the first ten months of each year since 1920, as well as index numbers for the latter, based upon the total for 1926 as 100. The average index numbers of wholesale prices of building materials in the first ten months of the years since 1920 are also given (average 1926=100).

Year	Value of permits issued in October	Value of permits issued in first ten months	Indexes of value of permits issued in first ten months, (1926=100)	Average indexes of wholesale prices of building materials in first ten months, (average 1926=100)
1935	\$ 4,020,308	\$40,530,654	30.0	82.1
1934	2,598,024	22,513,170	16.5	82.8
1933	1,775,052	18,169,066	13.5	77.8
1932	3,170,570	38,196,769	28.3	77.5
1931	8,442,627	97,045,622	71.9	82.4
1930	12,756,402	139,117,752	103.1	92.0
1929	18,073,378	204,084,467	151.3	99.2
1928	21,558,085	187,179,719	138.8	96.8
1927	18,848,019	160,000,554	118.6	96.2
1926	14,738,402	134,902,338	100.0	100.4
1925	11,312,644	109,676,825	81.3	103.0
1924	13,089,588	109,906,921	81.5	107.6
1923	9,999,187	118,319,159	87.7	111.8
1922	10,737,525	127,515,975	94.5	108.5
1921	10,491,228	99,064,670	73.4	125.2
1920	10,401,041	106,547,519	79.0	144.4

The aggregate for the first ten months of 1935 was higher by 81.6 p.c. than in 1934, being also substantially higher than in 1933 and somewhat higher than in 1932. With these exceptions, the total was less than in any other year of the record. The average index number of wholesale prices of building materials was also lower in 1935 than in any year from 1920 to 1931.

The table on page 3 gives the value of the building permits issued by each of the 58 cities during September and October, 1935, and October, 1934. The 35 cities for which records are available since 1910 are marked thus "x".

1912

1912

1912

1912

1912

1912

1912

1912

1912

1912

1912

1912

1912

1912

1912

1912

1912

1912

1912

1912

1912

1912

1912

1912

1912

1912

1912

1912

1912

1912

1912

1912

1912

1912

1912

1912

1912

1912

1912

1912

1912

1912

1912

1912

1912

1912

1912

1912

1912

1912

1912

1912

1912

1912

1912

1912

1912

1912

1912

1912

1912

1912

1912

1912

1912

1912

1912

1912

1912

1912

1912

1912

1912

1912

1912

1912

1912

1912

1912

1912

1912

1912

1912

1912

1912

1912

1912

1912

1912

1912

1912

1912

1912

1912

1912

1912

1912

1912

1912

1912

1912

1912

1912

1912

1912

1912

1912

1912

1912

1912

1912

1912

1912

1912

1912

1912

1912

1912

Estimated Value of Construction Work as Indicated by Building Permits Issued by 58 Cities.

C i t i e s	October, 1935	September, 1935	October, 1934
P.E.I. - Charlottetown	14,600	23,150	7,325
Nova Scotia	84,910	62,280	81,145
x Halifax	84,150	52,147	79,220
New Glasgow	760	4,800	175
x Sydney	Nil	5,333	1,750
New Brunswick	15,563	28,909	16,260
Fredericton	2,150	5,475	1,500
x Moncton	1,508	7,589	3,075
x Saint John	11,905	15,845	11,685
Quebec	1,256,754	583,517	624,380
x Montreal - xMaisonneuve	675,042	359,618	369,927
x Quebec	530,070	168,454	54,390
Shawinigan Falls	26,882	520	350
x Sherbrooke	15,000	16,300	6,200
x Three Rivers	2,450	2,225	138,550
x Westmount	7,310	36,400	54,963
Ontario	2,118,719	1,616,273	1,370,900
Belleville	11,997	900	8,750
x Brantford	35,369	17,943	15,537
Chatham	4,900	4,400	6,950
x Fort William	10,575	15,700	7,680
Galt	3,319	44,225	10,271
x Guelph	13,678	11,136	3,581
x Hamilton	50,631	142,974	79,455
x Kingston	37,000	18,648	10,948
x Kitchener	61,475	16,035	20,681
x London	89,255	51,965	34,465
Niagara Falls	6,275	43,375	2,250
Oshawa	2,325	16,780	5,395
x Ottawa	590,480	63,300	184,050
Owen Sound	1,270	7,000	560
x Peterborough	23,777	13,374	18,396
x Fort Arthur	11,473	25,335	13,080
x Stratford	9,750	5,295	12,180
x St. Catharines	8,068	31,273	20,820
x St. Thomas	3,885	14,300	871
Sarnia	7,000	8,460	4,549
Sault Ste. Marie	8,670	10,490	7,325
x Toronto	783,493	630,271	754,279
York & East York Townships	154,790	126,566	79,826
Welland	22,257	3,862	4,845
x Windsor 1/ Riverside	155,617	285,795	55,450
Woodstock	8,480	5,911	4,086
Manitoba	114,545	116,930	146,510
x Brandon	1,100	2,100	7,150
St. Boniface	17,995	30,180	7,360
x Winnipeg	95,450	84,650	132,000
Saskatchewan	17,855	490,924	50,780
x Moose Jaw	4,975	5,150	4,230
x Regina	6,695	479,094	44,815
x Saskatoon	6,185	6,740	1,735
Alberta	84,450	106,034	113,824
x Calgary	17,969	54,519	43,696
x Edmonton	50,170	42,210	58,023
Lethbridge	15,746	9,015	9,030
Medicine Hat	565	290	2,885
British Columbia	312,912	293,949	186,890
Kamloops	5,430	5,175	1,195
Nanaimo	2,625	3,479	1,285
x New Westminster	24,445	9,300	8,250
Prince Rupert	2,800	1,005	5,060
x Vancouver	247,555	246,495	133,610
North Vancouver	950	1,385	4,635
x Victoria	29,107	27,110	32,805
Total - 58 Cities 1/	4,020,308	3,322,026	2,598,024
xTotal - 35 Cities 1/	3,695,622	2,955,517	2,457,747

1/ Includes East Windsor, Sandwich and Walkerville, formerly shown separately, amalgamated with Windsor as from July 1, 1935.

STATISTICS CANADA LIBRARY
BIBLIOTHÈQUE STATISTIQUE CANADA



1010544944