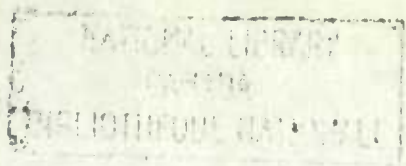
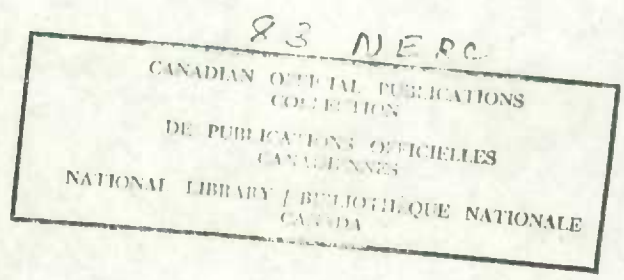


CI



NEW RESIDENTIAL CONSTRUCTION

MAY, 1957



Published by Authority of
The Honourable Gordon Churchill, Minister of Trade and Commerce

DOMINION BUREAU OF STATISTICS
Special Surveys Division

9603-502-57

Price \$2.00 per annum

Vol. 10, No. 5

2586-2



NEW RESIDENTIAL CONSTRUCTION

May, 1957

Introduction

The statistics contained in this report are the results of a nationwide survey carried out each month by the Dominion Bureau of Statistics with the co-operation of the Central Mortgage and Housing Corporation. All Metropolitan Areas and urban centres of 5,000 population and over, as well as other areas of high building activity, are enumerated completely. The remainder of the country is covered on a sample basis with about 800 sample areas selected for enumeration.

On the basis of 1956 Census results, an additional 36 urban municipalities are included in the "urban, 5,000 or more" category in Tables 2 and 3. Previous to 1957 these were mostly compiled in the "urban under 5,000". Full coverage of a few additional areas of high building activity formerly covered on a sample basis was begun as at January 1, 1957. These changes resulted in the estimate of the total number of dwellings under construction in Canada at the beginning of the year being revised from 68,579 (as given in the December 1956 report) to 68,742. This increase of 163 units is the result of an increase of 1,266 in "urban, 5,000 or more" and decreases of 867 and 236 in "urban under 5,000" and "rural, non-farm" respectively.

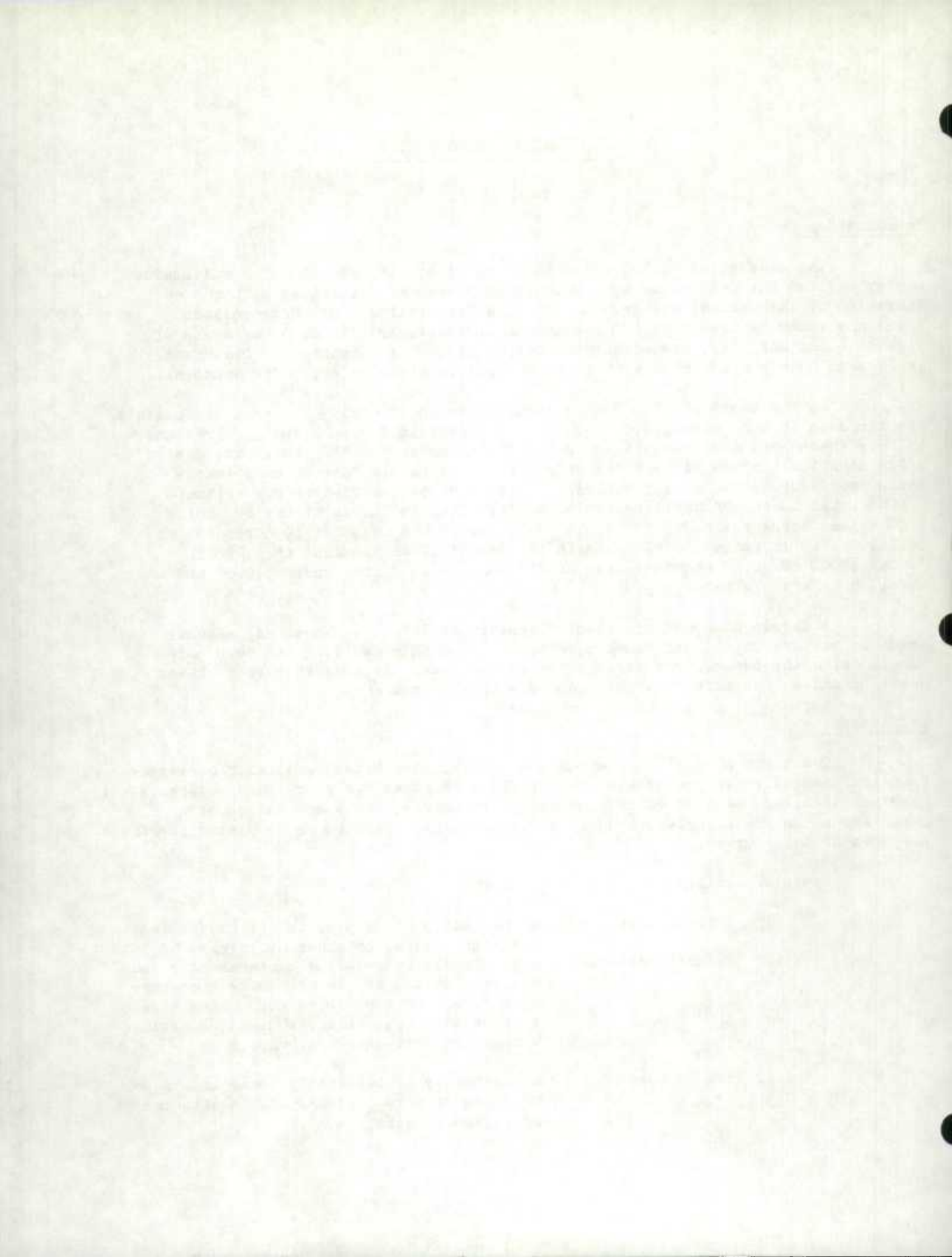
A column headed "Adjustments" appears in Table 1. These adjustments can arise in various ways. For example, after a start on a dwelling has been made construction may cease, or a structure when completed may contain more or fewer dwelling units than were reported when construction commenced.

Definitions

The count of dwellings which are started, completed, and under construction includes only new residential construction intended for year-round occupancy. Seasonal dwellings such as summer cottages, ski shacks, etc., are not counted. Dwellings which are occupied, even if unfinished, are regarded as completed for the purposes of this survey.

Types of dwelling:

- (i) 1-family detached - a one-family house open on all four sides, i.e., not joined to other buildings;
- (ii) 2-family detached - a two-family house which contains only two dwelling units, either one above the other open on all four sides, or two units side by side each open on three sides, sometimes known as a semi-detached house;
- (iii) row or terrace - a one-family or two-family house in a row of three or more attached houses with common or adjacent walls;



- (iv) apartment or flat - an apartment or flat is (a) a residential structure containing three or more dwelling units, or (b) a structure used for business purposes which contains one or more dwelling units (e.g., living quarters in an office building or factory, living quarters over a store, etc.);
- (v) other - any type of dwelling which does not fall into one of the above classifications.

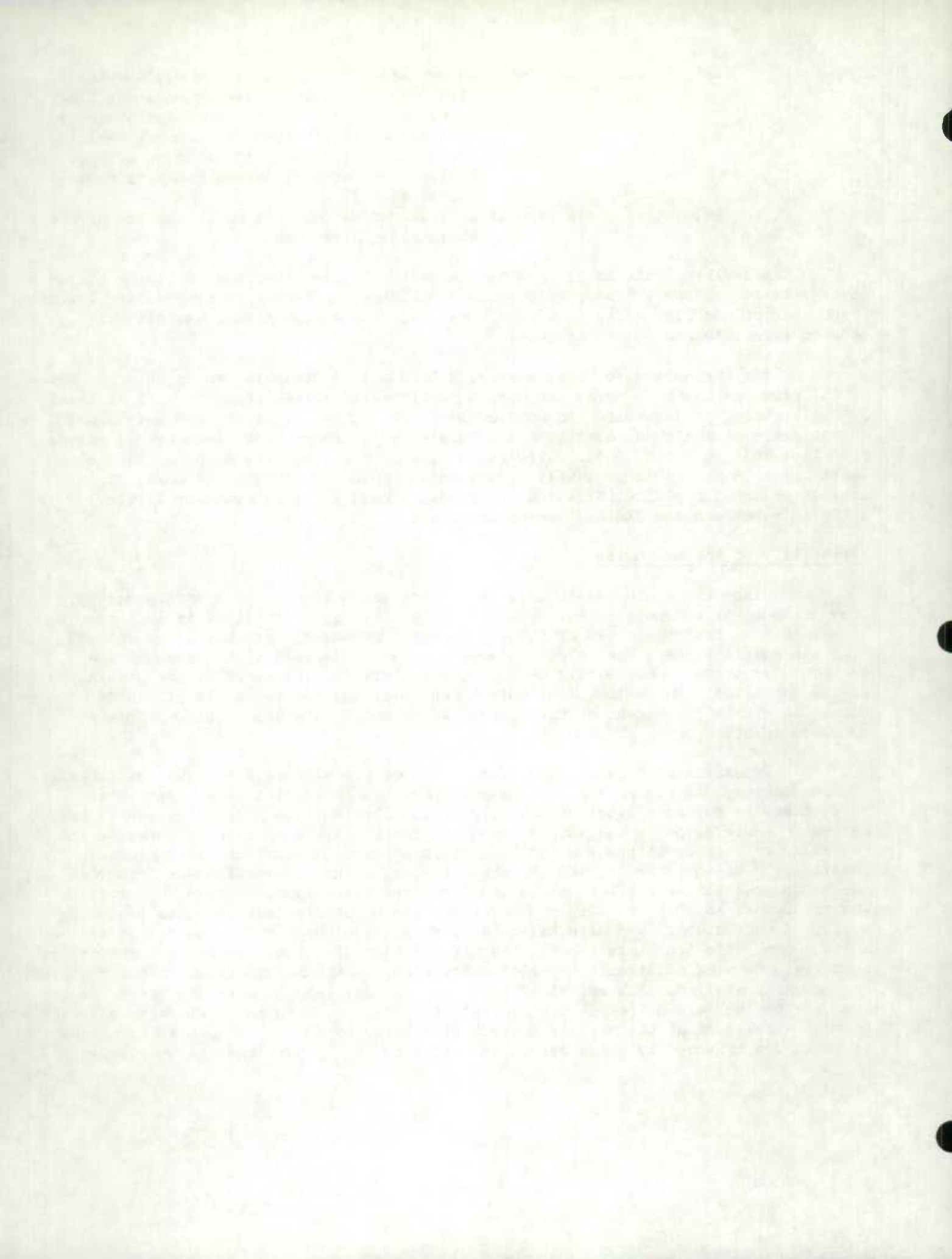
A dwelling unit is defined as a structurally separate set of living quarters having its own entrance from outside of the building, or from a common passage inside. The number of dwelling units in a structure will be the number of households the structure is intended to accommodate.

For the purpose of this survey, a farm must contain (a) three acres or more or (b) from one to three acres and have a yearly agricultural production of at least \$250. including produce used for home consumption. This definition was introduced concurrently with a changeover to a new sample design which took place over a period from late 1953 to early 1955. While formerly a farm was defined as containing at least one acre and having a yearly agricultural production of \$50. or more, it is considered that, for classification of new dwellings, there is actually little difference between the old and new definitions.

Reliability of the estimates

Since the estimates in this report are based in part on a sample survey, they are subject to sampling variability. This sampling variability is not present in the data on municipalities of 5,000 population and over. For estimates derived from the sample survey, the relative sampling error increases as the size of the estimate decreases. Care should be taken, therefore, in interpreting the precision of the estimates. The estimate of unfinished dwellings for the whole of Canada should be within 5 per cent of the figures which would have been obtained from a complete count.

In addition to sampling variance, all of the estimates are subject to errors of enumeration. As the survey for the most part can be carried on without interview, there is no error attributable to response difficulties. However, due to the method of enumeration in the sample areas, there is a tendency towards delay in the reporting of some dwellings started in certain months. Without correction, the result would be an over-estimate for the months in which these starts are reported and an under-estimate for the months in which they actually occurred. This effect was pronounced in 1955 and 1956. Under-estimates of starts in the months preceding June 1955 and October 1955 were balanced by substantial over-estimates for these two months. In Table 5 of this report, the distribution of starts by months for 1955 has been revised using additional reported information on the months in which the dwelling was actually started. The effect of this tendency was less in previous years and the months affected were different than in 1955 or 1956. Data is not available on which to base a revision of the monthly distribution prior to 1955. As changes from month to month are affected by these delays in reporting and by the inherent sampling



variability, caution is required in making such comparison. The 1956 estimates of starts given in previous issues of this report have been similarly revised on the basis of data obtained in the June and October surveys. The originally published figures for starts during the period January 1 to May 31, 1956, of 38,007 was revised to 40,798 and for starts, January 1 to September 30, 1956, was revised to 103,437 from 100,041. The 1957 estimates of starts given in this report are subject to similar revision on the basis of data which will be obtained in the June 1957 survey and revision of these estimates and of those for the months intervening will be made in the June report.

The estimates presented in the tables are shown to the last digit instead of being rounded, not because they are assumed to be accurate to the last digit, but rather for convenience in summation and economy in processing the tabulations

Metropolitan Areas

Some cities in Canada have reasonably well-defined suburban areas and the largest of these have been included in Table 3 under the name of the principal city. Data for the individual components of these Metropolitan Areas are given in Table 4; the whole of these areas are included in the "Urban, 5,000 or more" category in Table 2.

The Metropolitan Areas set up for the 1951 Census have been used from 1952 to 1955. Boundary alterations made for the 1956 Census in the Metropolitan Areas of Calgary, Edmonton, Hamilton, London, Ottawa-Hull, St. John's (Nfld.), Vancouver, and Windsor, have been incorporated as of January 1, 1956, in the delineation of these areas for this survey. With the exceptions of Ottawa-Hull and Vancouver, the changes in boundaries have little effect on the volume of residential construction reported for these Metropolitan Areas. In the case of Ottawa-Hull, the addition of Nepean Township resulted in an increase of somewhat under 8 per cent in dwellings under construction at January 1, 1956, and for Vancouver, the addition of Delta District Municipality and the part of Surrey District Municipality formerly excluded from the Metropolitan Area resulted in an increase of a little over 8 per cent in dwellings under construction at January 1, 1956. While the net change in the total Metropolitan Area of St. John's, Nfld., was quite small, the subdivision of the suburban portion was changed entirely and for the individual sections no comparison of 1956 data with previous years is possible.

Other Major Urban Areas

In addition to the Metropolitan Areas, other large urban centres also have suburban areas. Data for these other major urban areas are given in Appendix A. It should be noted that in Table 2, the suburban areas in these cases are included in the category to which they belong individually, which could be any one of the four rural-urban classifications.



Table 1. - Construction of dwelling units in Canada and the provinces

	Under construction Jan. 1	Jan. 1 to May 31		Adjustments	Under construction May 31
		Started	Completed		
<u>1957</u>					
Canada	68,742	27,602	39,253	+ 392	57,483
Newfoundland	3,148	156	438	- 3	2,863
Prince Edward Island	70	9	42	- 12	25
Nova Scotia	1,922	699	745	- 8	1,868
New Brunswick	2,510	548	891	+ 60	2,227
Quebec	15,866	8,439	10,734	+ 86	13,657
Ontario	26,314	10,570	15,762	+ 285	21,407
Manitoba	2,321	741	1,293	+ 1	1,770
Saskatchewan	2,305	658	1,278	+ 13	1,698
Alberta	5,181	2,010	3,494	+ 38	3,735
British Columbia	9,105	3,772	4,576	- 68	8,233
<u>1956</u>					
Canada	79,100	40,798	44,441	- 1,424	74,033
Newfoundland	3,031	409	433	- 17	2,990
Prince Edward Island	93	-	36	+ 35	92
Nova Scotia	1,661	898	711	- 73	1,775
New Brunswick	1,758	607	318	- 130	1,917
Quebec	21,797	12,207	14,177	- 475	19,352
Ontario	29,333	16,305	18,361	- 381	26,896
Manitoba	3,564	1,250	1,551	+ 1	3,264
Saskatchewan	2,258	760	1,025	- 63	1,930
Alberta	6,381	2,669	3,450	- 155	5,445
British Columbia	9,224	5,693	4,379	- 166	10,372
<u>1955</u>					
Canada	68,641	39,663	41,616	+ 1,165	67,853
Newfoundland	2,906	237	229	- 20	2,894
Prince Edward Island	87	19	13	-	93
Nova Scotia	1,503	739	922	- 8	1,312
New Brunswick	1,369	612	404	- 83	1,494
Quebec	16,629	11,203	10,692	+ 561	17,701
Ontario	27,941	15,817	18,657	- 37	25,064
Manitoba	2,796	1,294	1,455	- 82	2,553
Saskatchewan	2,545	1,034	1,479	- 278	1,822
Alberta	6,442	2,464	3,886	- 86	4,934
British Columbia	6,423	6,244	3,879	+ 1,198	9,986

- Notes - (a) Number of dwelling units under construction January 1, 1957 revised - see paragraph 2 of "Introduction", page 3.
- (b) Number of dwelling units started in 1957 subject to revision - see paragraph 2 of "Reliability of the estimates", page 4.
- (c) Number of dwelling units completed in 1955 revised due to under-tabulation of completions in Scarborough Township and Edmonton City for May 1955.

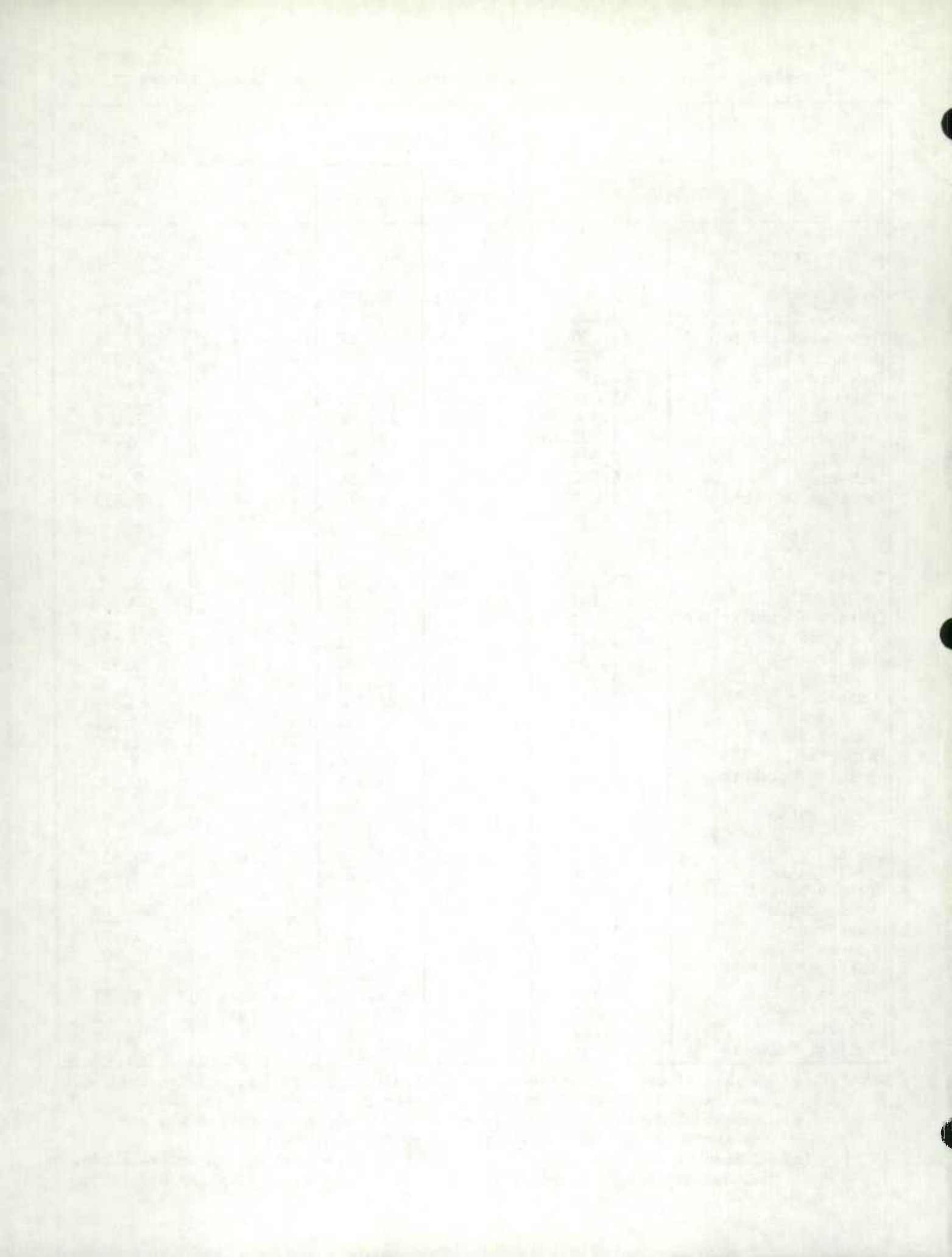


Table 2. - Construction of dwelling units in rural and urban areas by region

	1957			1956		
	Jan. 1 to May 31		Under construction May 31	Jan. 1 to May 31		Under construction May 31
	Started	Completed		Started	Completed	
Canada	27,602	39,253	57,483	40,798	44,441	74,033
Urban	23,067	31,964	41,094	-	-	-
5,000 or more	(22,974)	(31,869)	(41,032)	33,670	37,986	54,269
Under 5,000	21,511	30,247	37,086	-	-	-
Rural	(21,036)	(29,417)	(36,248)	30,660	35,317	48,591
Non-farm	1,556	1,717	4,008	-	-	-
Farm	(1,938)	(2,452)	(4,784)	3,010	2,669	5,678
Urban	4,535	7,289	16,389	-	-	-
Non-farm	(4,628)	(7,384)	(16,451)	7,128	6,455	19,764
Farm	4,055	6,517	14,052	-	-	-
Rural	(4,148)	(6,612)	(14,114)	6,476	5,940	17,232
Non-farm	480	772	2,337	652	515	2,532
Farm	-	-	-	-	-	-
Newfoundland	156	438	2,863	409	433	2,990
Urban	87	152	428	187	310	475
5,000 or more	87	152	426	187	310	475
Under 5,000	-	-	2	-	-	-
Rural	69	286	2,435	222	123	2,515
Non-farm	69	286	2,389	198	123	2,445
Farm	-	-	46	24	-	70
Maritime Provinces	1,256	1,678	4,120	1,505	1,065	3,784
Urban	508	995	1,273	811	835	1,621
5,000 or more	465	833	1,092	-	-	-
Under 5,000	(449)	(821)	(1,072)	710	641	1,413
Rural	43	162	181	-	-	-
Non-farm	(59)	(174)	(201)	101	194	208
Farm	748	683	2,847	694	230	2,163
Urban	629	656	2,609	672	211	2,068
Non-farm	119	27	238	22	19	95
Farm	-	-	-	-	-	-
Quebec	8,439	10,734	13,657	12,207	14,177	19,352
Urban	7,694	9,050	11,312	-	-	-
5,000 or more	(7,681)	(9,033)	(11,297)	11,130	12,596	15,881
Under 5,000	7,037	8,553	10,158	-	-	-
Rural	(6,785)	(8,230)	(9,761)	9,979	11,664	14,242
Non-farm	657	497	1,154	-	-	-
Farm	(896)	(803)	(1,536)	1,151	932	1,639

- Notes - (a) See paragraph 2 of "Introduction", page 3 re: transfer of some municipalities to "Urban, 5,000 or more" in 1957. For comparison with 1956 data, such transfers have been reversed for the affected items in the adjusted 1957 figures shown in parentheses on the same line as the corresponding 1956 figures.
- (b) Number of dwelling units started in 1957 subject to revision - see paragraph 2 of "Reliability of the estimates", page 4.

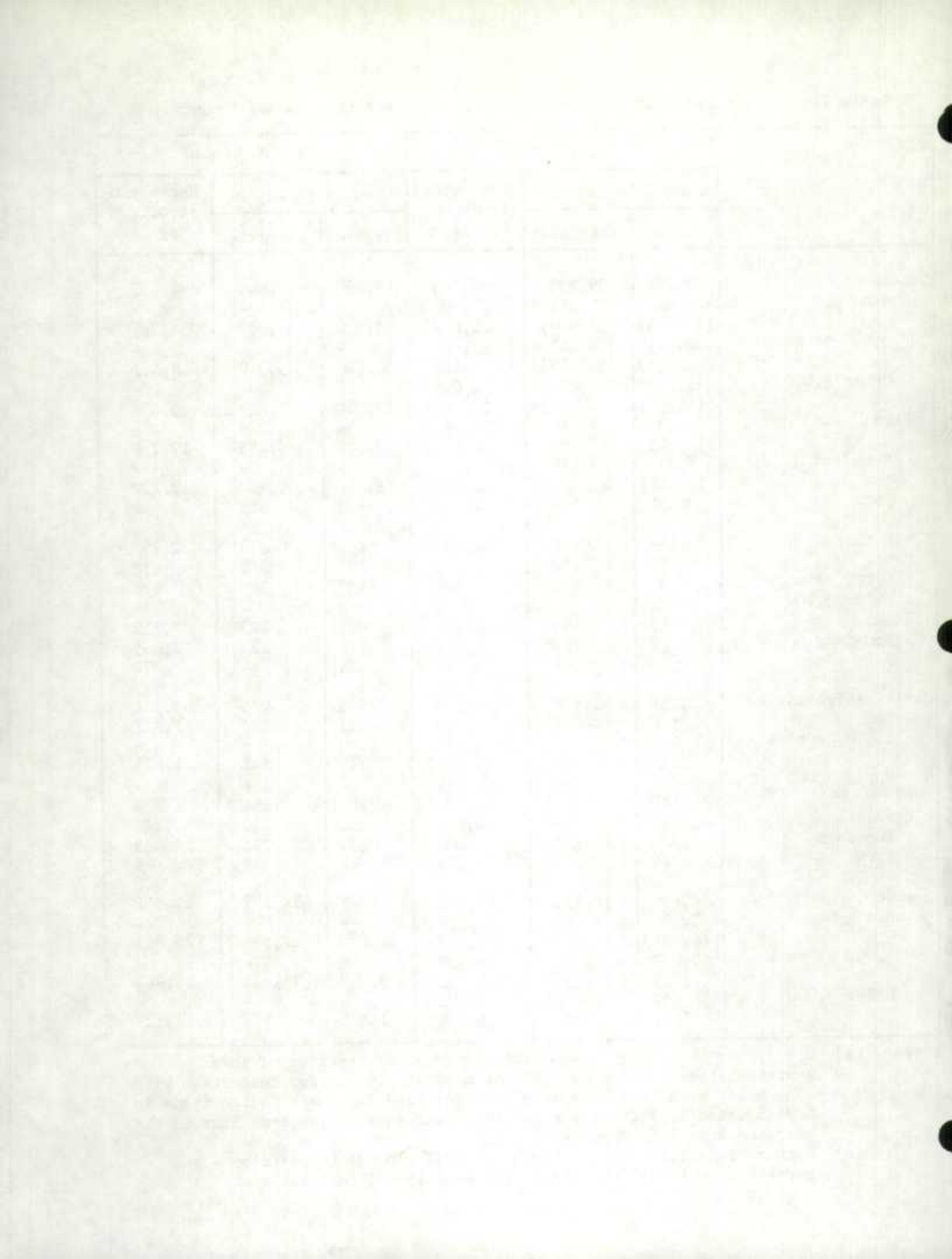


Table 2. - Construction of dwelling units in rural and urban areas by region - con.

	1957			1956		
	Jan. 1 to May 31		Under construction May 31	Jan. 1 to May 31		Under construction May 31
	Started	Completed		Started	Completed	
Quebec - con.						
Rural	745 (758)	1,684 (1,701)	2,345 (2,360)	- 1,077	- 1,581	- 3,471
Non-farm	721 (734)	1,527 (1,544)	2,136 (2,151)	- 1,024	- 1,520	- 3,110
Farm	24	157	209	53	61	361
Ontario	10,570	15,762	21,407	16,305	18,361	26,896
Urban	8,825 (8,745)	12,543 (12,465)	16,167 (16,120)	- 12,635	- 14,795	- 20,042
5,000 or more	8,457 (8,306)	11,921 (11,567)	14,976 (14,786)	- 11,586	- 13,842	- 17,976
Under 5,000	368 (439)	622 (898)	1,191 (1,334)	- 1,049	- 953	- 2,066
Rural	1,745 (1,825)	3,219 (3,297)	5,240 (5,287)	- 3,670	- 3,566	- 6,854
Non-farm	1,661 (1,741)	2,986 (3,064)	4,889 (4,936)	- 3,561	- 3,336	- 6,445
Farm	84	233	351	109	230	409
Prairie Provinces	3,409	6,065	7,203	4,679	6,026	10,639
Urban	2,912 (2,434)	5,350 (4,987)	5,883 (4,937)	4,338 4,019	5,791 5,347	8,843 8,056
5,000 or more	2,487 (2,434)	5,074 (4,987)	5,002 (4,937)	- 4,019	- 5,347	- 8,056
Under 5,000	425 (478)	276 (363)	881 (946)	- 319	- 444	- 787
Rural	497	715	1,320	341	235	1,796
Non-farm	415	525	522	157	171	892
Farm	82	190	798	184	64	904
British Columbia	3,772	4,576	8,233	5,693	4,379	10,372
Urban	3,041 (2,975)	3,874 (3,660)	6,031 (5,266)	4,569 4,179	3,659 3,513	7,407 6,429
5,000 or more	2,978 (2,975)	3,714 (3,660)	5,432 (5,266)	- 4,179	- 3,513	- 6,429
Under 5,000	63 (66)	160 (214)	599 (765)	- 390	- 146	- 978
Rural	731	702	2,202	1,124	720	2,965
Non-farm	560	537	1,507	864	579	2,272
Farm	171	165	695	260	141	693

Notes - (a) See paragraph 2 of "Introduction", page 3 re: transfer of some municipalities to "Urban, 5,000 or more" in 1957. For comparison with 1956 data, such transfers have been reversed for the affected items in the adjusted 1957 figures shown in parentheses on the same line as the corresponding 1956 figures.

(b) Number of dwelling units started in 1957 subject to revision - see paragraph 2 of "Reliability of the estimates", page 4.

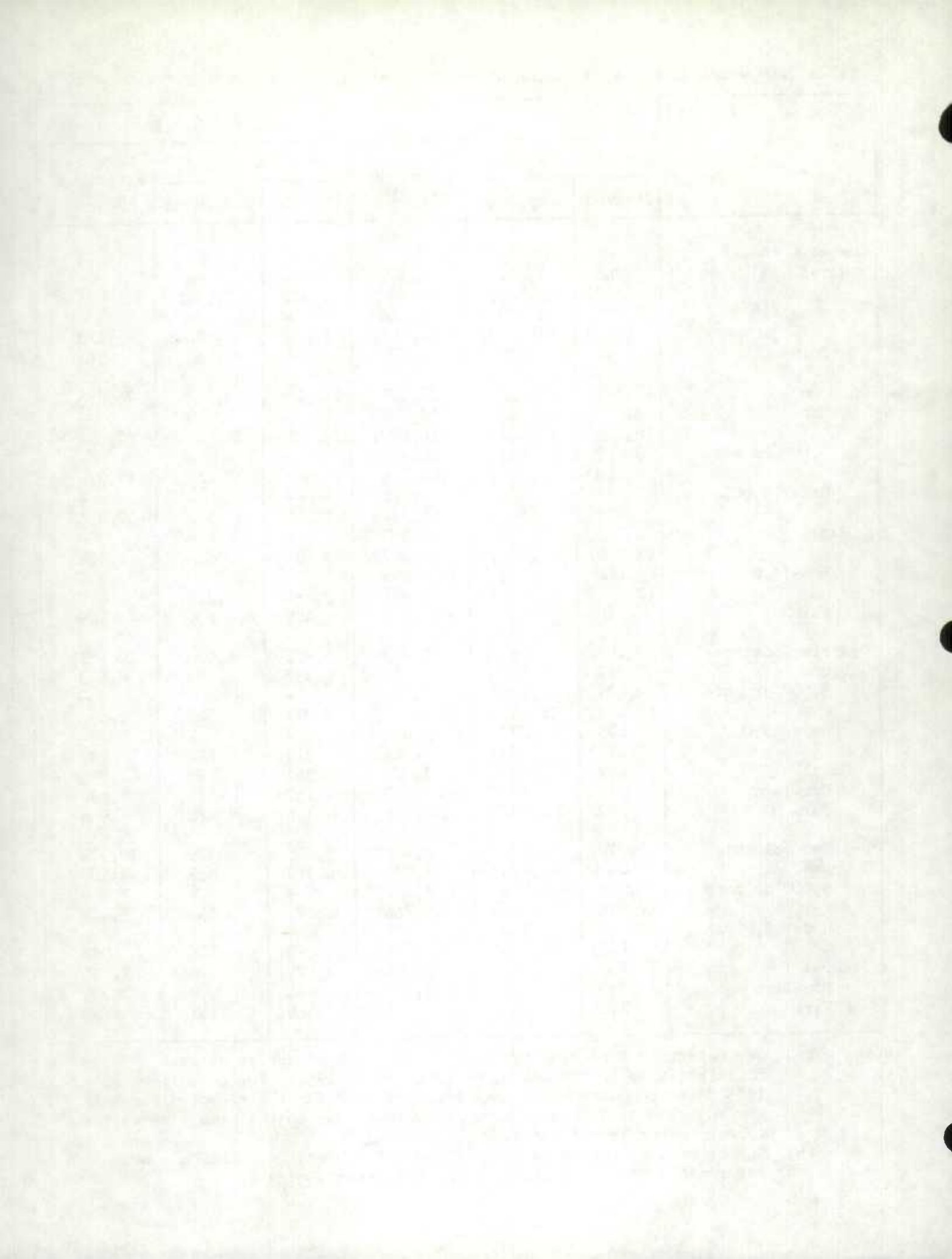


Table 3. - Construction of dwelling units in urban centres of 5,000 or more

	1957			1956		
	Jan. 1 to May 31		Under construction May 31	Jan. 1 to May 31		Under construction May 31
	Started	Completed		Started	Completed	
Newfoundland	87	152	426	187	310	475
Bell Island	2	7	33	-	-	36
Corner Brook	26	22	64	33	56	60
Grand Falls (1)	2	13	51	15	24	73
St. John's (2)	57	110	278	139	230	306
Prince Edward Island	9	24	16	-	-	47
Charlottetown	8	17	12	-	-	33
Summerside	1	7	4	-	-	14
Nova Scotia	295	527	699	543	507	991
Amherst	4	16	6	-	3	3
Glace Bay	1	3	8	3	1	7
Halifax (2)	217	445	447	446	414	797
New Glasgow	2	6	3	4	4	7
New Waterford	-	-	3	-	1	1
North Sydney	4	3	43	16	2	36
Springhill	-	-	-	-	1	-
Stellarton	-	1	1	2	1	3
Sydney	42	21	111	46	42	83
Sydney Mines	4	4	22	8	7	19
Truro	20	28	39	18	28	35
Yarmouth	1	-	16	-	3	-
New Brunswick	161 (145)	282 (270)	377 (357)	- 167 (3)	- 134 (3)	- 375 (3)
Bathurst	10	7	8	(3)	(3)	(3)
Campbellton	1	2	1	-	6	2
Chatham	3	6	5	-	3	3
Dalhousie	6	5	12	(3)	(3)	(3)
Edmundston	6	4	6	5	-	8
Fredericton	13	26	98	19	27	104
Moncton	28	166	53	72	80	104
Saint John (2)	94	66	194	71	18	154
Quebec	7,037 (6,785)	8,553 (8,230)	10,158 (9,761)	- 9,979	- 11,664	- 14,242
Alma	27	5	25	40	14	39
Amos	1	1	1	(3)	(3)	(3)

- (1) Includes Windsor. (2) Metropolitan Area. See "Metropolitan areas", page 5.
 (3) Included in "Urban, 5,000 or more" for first time beginning January, 1957.

Note - See paragraph 2 of "Introduction", page 3 re: transfer of some municipalities to "Urban, 5,000 or more" in 1957. For comparison with 1956, the urban municipalities so transferred have been deleted in the adjusted 1957 provincial totals shown in parentheses on the same line as the corresponding 1956 figures. The provinces of Newfoundland, Prince Edward Island, Nova Scotia and Manitoba were not affected.

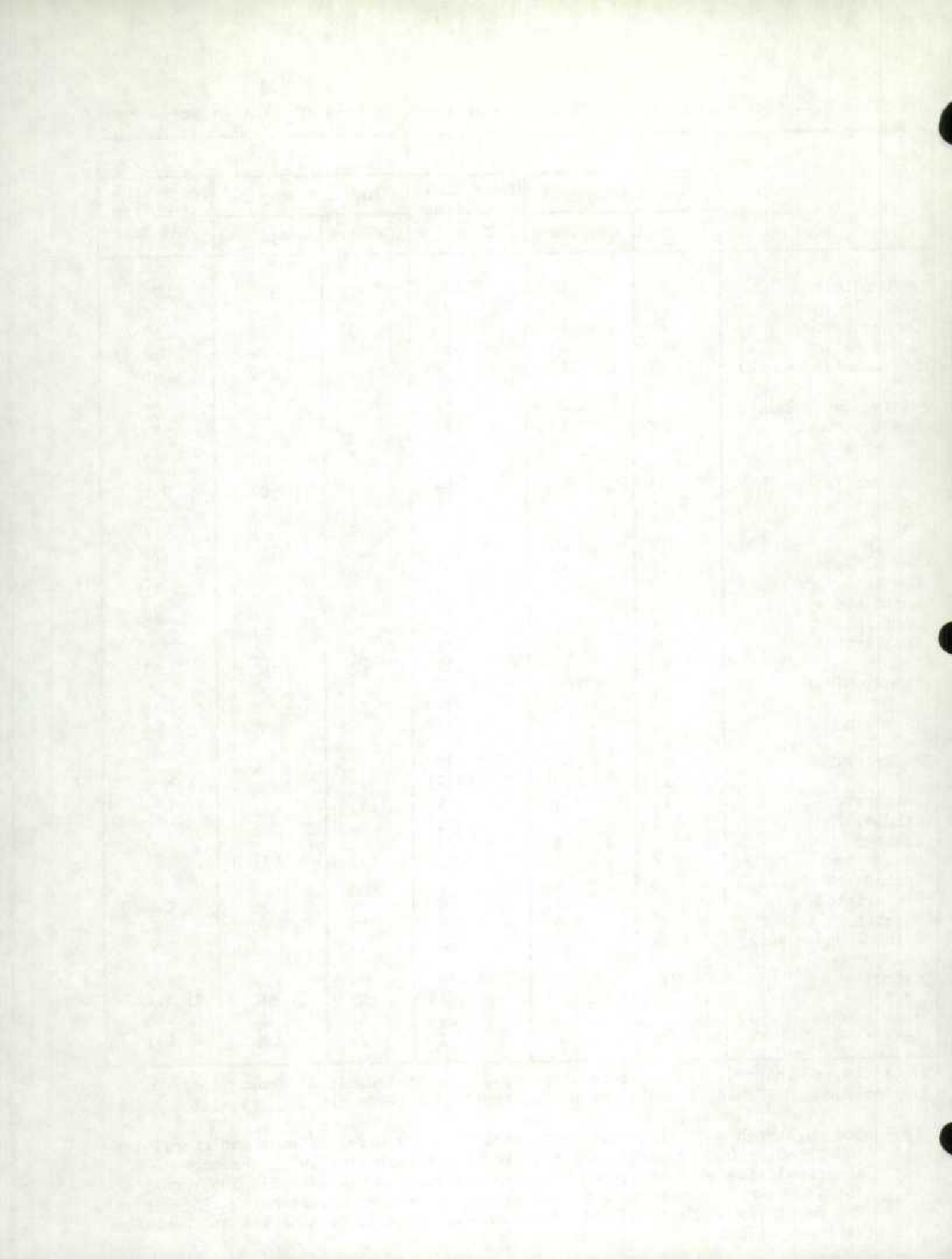


Table 3. - Construction of dwelling units in urban centres of 5,000 or more - con.

	1957			1956		
	Jan. 1 to May 31		Under construction May 31	Jan. 1 to May 31		Under construction May 31
	Started	Completed		Started	Completed	
Quebec - con.						
Arvida	18	29	19	37	70	44
Asbestos	10	40	12	52	13	53
Beauharnois	27	48	30	32	19	32
Buckingham	9	3	11	7	3	11
Cap-de-la-Madeleine	29	23	53	74	56	84
Chicoutimi	22	12	28	(2)	(2)	(2)
Chicoutimi North	11	17	11	(2)	(2)	(2)
Coaticook	10	6	12	5	5	8
Cowansville	7	13	7	(2)	(2)	(2)
Dolbeau	11	7	8	(2)	(2)	(2)
Drummondville	7	6	7	24	9	23
Farnham	3	6	4	(2)	(2)	(2)
Granby	22	81	38	75	130	104
Grand Mère	27	11	28	51	32	53
Hull (1)	157	162	281	303	165	471
Iberville	14	24	15	26	24	25
Joliette	4	17	7	20	64	24
Jonquière	41	18	36	67	27	71
Kenogami	24	5	24	28	9	28
Lachute	11	7	11	8	3	11
Laprairie	11	30	17	(2)	(2)	(2)
La Tuque	16	21	50	28	8	30
Magog	15	4	15	14	8	15
Malartic	1	6	1	4	4	4
Maniwaki	9	12	12	(2)	(2)	(2)
Matane	3	6	13	4	5	5
Mégantic	-	1	-	-	3	2
Mont-Joli	-	1	14	(2)	(2)	(2)
Mont-Laurier	10	16	16	(2)	(2)	(2)
Montmagny	8	25	8	17	-	17
Montreal (1)	5,322	6,440	7,715	7,398	9,052	11,317
Noranda	12	53	22	-	1	-
Plessisville	4	5	4	-	-	1
Port-Alfred	9	-	8	(2)	(2)	(2)
Quebec (1)	423	567	685	916	1,214	821
Rimouski	6	3	27	25	25	25
Rivière-du-loup	5	5	9	5	2	9
Roberval	5	13	4	(2)	(2)	(2)

(1) Metropolitan Area. See "Metropolitan Areas", page 5. (2) Included in "Urban, 5,000 or more" for first time beginning January, 1957.

Note - See paragraph 2 of "Introduction", page 3 re: transfer of some municipalities to "Urban, 5,000 or more" in 1957. For comparison with 1956, the urban municipalities so transferred have been deleted in the adjusted 1957 provincial totals shown in parentheses on the same line as the corresponding 1956 figures. The provinces of Newfoundland, Prince Edward Island, Nova Scotia and Manitoba were not affected.

Table with multiple columns and rows, containing faint text and numbers. The table structure is complex with many columns and rows, but the content is illegible due to fading.

Faint text at the bottom of the page, possibly a footer or additional notes, which is mostly illegible.

Table 3. - Construction of dwelling units in urban centres of 5,000 or more - con.

	1957			1956		
	Jan. 1 to May 31		Under construction May 31	Jan. 1 to May 31		Under construction May 31
	Started	Completed		Started	Completed	
Quebec - con.						
Rouyn	7	11	7	1	18	9
Ste-Agathe-des-Monts	9	13	9	4	12	10
St-Eustache-sur-le-Lac	53	16	37	(1)	(1)	(1)
St-Hyacinthe	20	20	23	36	30	40
St-Jean	45	70	60	52	104	90
St-Jérôme	92	83	100	49	70	73
St-Martin	34	65	74	(1)	(1)	(1)
Ste-Rose	19	27	23	(1)	(1)	(1)
Ste-Thérèse (Terrebonne)	19	30	22	26	35	33
St-Vincent-de-Paul	21	20	43	(1)	(1)	(1)
Sept-Iles	29	36	97	(1)	(1)	(1)
Shawinigan Falls	17	19	23	53	16	81
Shawinigan South	14	22	17	46	32	52
Sherbrooke	68	52	73	136	113	148
Sorel	17	20	19	23	39	30
Thetford Mines	15	49	15	28	32	37
Tracy	13	17	15	(1)	(1)	(1)
Trois Rivières	76	85	74	77	73	103
Val d'Or	10	4	11	3	5	3
Valleyfield	83	73	103	68	43	82
Victoriaville	19	46	19	56	49	58
Windsor	6	26	6	(1)	(1)	(1)
Ontario	8,457 (8,306)	11,921 (11,567)	14,976 (14,786)	- 11,586	- 13,842	- 17,976
Ajax	80	78	47	(1)	(1)	(1)
Amnrior	2	12	15	(1)	(1)	(1)
Barrie	63	65	79	105	78	148
Belleville	14	9	20	23	32	30
Bowmanville	12	12	18	23	19	29
Brampton	18	53	20	65	93	94
Brantford	61	55	159	101	117	182
Brockville	45	49	40	33	44	35
Chatham	17	45	174	89	10	145
Cobourg	8	27	18	26	26	27
Collingwood	9	4	9	-	1	2

(1) Included in "Urban, 5,000 or more" for the first time beginning January, 1957.

Note - See paragraph 2 of "Introduction", page 3 re: transfer of some municipalities to "Urban, 5,000 or more" in 1957. For comparison with 1956, the urban municipalities so transferred have been deleted in the adjusted 1957 provincial totals shown in parentheses on the same line as the corresponding 1956 figures. The provinces of Newfoundland, Prince Edward Island, Nova Scotia and Manitoba were not affected.

Table 3. - Construction of dwelling units in urban centres of 5,000 or more - con.

	1957			1956		
	Jan. 1 to May 31		Under construction May 31	Jan. 1 to May 31		Under construction May 31
	Started	Completed		Started	Completed	
Ontario - con.						
Cornwall	135	162	161	1	42	2
Fort Erie	8	7	15	8	8	18
Fort Frances	7	9	8	2	18	8
Fort William	99	91	139	119	92	162
Galt	44	52	79	37	66	86
Georgetown	18	6	21	(2)	(2)	(2)
Goderich	6	6	8	(2)	(2)	(2)
Guelph	53	58	81	113	95	118
Hamilton (1)	802	1,035	1,494	1,015	1,303	1,843
Hawkesbury	7	11	17	17	5	29
Ingersoll	14	16	18	4	3	15
Kapuskasing	-	-	6	(2)	(2)	(2)
Kenora	8	25	21	10	9	22
Kingston	79	129	103	70	126	103
Kitchener	145	233	280	209	206	302
Leamington	24	17	46	24	19	49
Lindsay	5	8	6	6	2	7
London (1)	358	526	443	622	611	812
Merritton	10	7	13	(2)	(2)	(2)
Midland	9	13	10	17	12	17
Newmarket	4	13	4	12	117	60
Niagara Falls	-	3	21	15	11	24
North Bay	83	40	114	88	43	107
Oakville	6	28	9	12	33	23
Orillia	9	39	27	44	45	49
Oshawa	140	173	146	147	173	138
Ottawa (1)	823	1,230	1,482	1,150	1,319	1,898
Owen Sound	30	16	24	17	10	17
Paris	2	2	7	4	9	10
Parry Sound	15	1	21	7	2	8
Pembroke	19	23	50	20	48	50
Penetanguishene	-	3	1	(2)	(2)	(2)
Perth	1	6	7	2	2	12
Peterborough	66	81	80	96	135	138
Port Arthur	85	69	130	67	77	110
Port Colborne	22	34	38	34	49	69
Port Credit	14	20	16	(2)	(2)	(2)
Port Hope	14	23	28	16	18	26

(1) Metropolitan Area. See "Metropolitan Areas", page 5. (2) Included in "Urban, 5,000 or more" for first time beginning January, 1957.

Note - See paragraph 2 of "Introduction", page 3 re: transfer of some municipalities to "Urban, 5,000 or more" in 1957. For comparison with 1956, the urban municipalities so transferred have been deleted in the adjusted 1957 provincial totals shown in parentheses on the same line as the corresponding 1956 figures. The provinces of Newfoundland, Prince Edward Island, Nova Scotia and Manitoba were not affected.

Date	Description	Debit	Credit	Balance
1900				
Jan 1	Balance forward			
Jan 2	...			
Jan 3	...			
Jan 4	...			
Jan 5	...			
Jan 6	...			
Jan 7	...			
Jan 8	...			
Jan 9	...			
Jan 10	...			
Jan 11	...			
Jan 12	...			
Jan 13	...			
Jan 14	...			
Jan 15	...			
Jan 16	...			
Jan 17	...			
Jan 18	...			
Jan 19	...			
Jan 20	...			
Jan 21	...			
Jan 22	...			
Jan 23	...			
Jan 24	...			
Jan 25	...			
Jan 26	...			
Jan 27	...			
Jan 28	...			
Jan 29	...			
Jan 30	...			
Jan 31	...			
Feb 1	...			
Feb 2	...			
Feb 3	...			
Feb 4	...			
Feb 5	...			
Feb 6	...			
Feb 7	...			
Feb 8	...			
Feb 9	...			
Feb 10	...			
Feb 11	...			
Feb 12	...			
Feb 13	...			
Feb 14	...			
Feb 15	...			
Feb 16	...			
Feb 17	...			
Feb 18	...			
Feb 19	...			
Feb 20	...			
Feb 21	...			
Feb 22	...			
Feb 23	...			
Feb 24	...			
Feb 25	...			
Feb 26	...			
Feb 27	...			
Feb 28	...			
Feb 29	...			
Feb 30	...			
Feb 31	...			
Mar 1	...			
Mar 2	...			
Mar 3	...			
Mar 4	...			
Mar 5	...			
Mar 6	...			
Mar 7	...			
Mar 8	...			
Mar 9	...			
Mar 10	...			
Mar 11	...			
Mar 12	...			
Mar 13	...			
Mar 14	...			
Mar 15	...			
Mar 16	...			
Mar 17	...			
Mar 18	...			
Mar 19	...			
Mar 20	...			
Mar 21	...			
Mar 22	...			
Mar 23	...			
Mar 24	...			
Mar 25	...			
Mar 26	...			
Mar 27	...			
Mar 28	...			
Mar 29	...			
Mar 30	...			
Mar 31	...			

Total Debit: \$
 Total Credit: \$
 Balance: \$

Table 3. - Construction of dwelling units in urban centres of 5,000 or more - con.

	1957			1956		
	Jan. 1 to May 31		Under construction May 31	Jan. 1 to May 31		Under construction May 31
	Started	Completed		Started	Completed	
Ontario - con.						
Preston	17	26	25	54	56	46
Renfrew	16	18	27	8	7	19
Richmond Hill	18	218	56	(5)	(5)	(5)
St. Catharines	59	46	81	82	62	102
St. Thomas	29	20	34	16	23	21
Sarnia	101	85	95	229	172	312
Sault Ste-Marie	90	100	117	178	103	211
Simcoe	14	18	18	12	13	21
Smith's Falls	4	4	8	1	5	7
Stratford	18	37	23	30	58	30
Sturgeon Falls	3	4	7	(5)	(5)	(5)
Sudbury	74	66	90	72	40	77
Thorold	27	15	29	13	21	21
Tillsonburg	2	11	7	27	6	43
Timmins	2	6	5	3	25	4
Toronto (1)	3,916	5,858	7,549	5,531	7,257	8,657
Trenton	17	28	36	18	40	43
Wallaceburg	9	4	15	12	13	19
Waterloo	45	94	79	108	145	133
Welland	28	26	39	60	34	77
Whitby	39	22	34	26	22	24
Windsor (1)	394	455	776	560	540	913
Woodstock	42	136	53	76	72	172
Manitoba	511	1,197	1,378	995	1,440	2,881
Brandon	45	46	173	72	74	172
Dauphin	3	16	4	-	4	-
Flin Flon (pt) (2)	6	-	20	6	-	19
Portage la Prairie	14	21	22	-	23	4
Selkirk	13	23	26	7	2	16
Winnipeg (1)	430	1,091	1,133	910	1,337	2,670
Saskatchewan	553	1,015	941	-	-	-
	(511)	(980)	(895)	657	873	1,263
Estevan	42	35	46	(5)	(5)	(5)
Flin Flon (pt) (3)	-	-	1	1	-	1
Lloydminster (pt)(4)	-	-	-	(5)	(5)	(5)
Moose Jaw	24	32	83	50	50	116

(1) Metropolitan Area. See "Metropolitan Areas", page 5. (2) Remainder of Flin Flon included under Saskatchewan. (3) Remainder of Flin Flon included under Manitoba. (4) Remainder of Lloydminster included under Alberta. (5) Included in "Urban, 5,000 or more" for first time beginning January, 1957.

Note - See paragraph 2 of "Introduction", page 3 re: transfer of some municipalities to "Urban, 5,000 or more" in 1957. For comparison with 1956, the urban municipalities so transferred have been deleted in the adjusted 1957 provincial totals shown in parentheses on the same line as the corresponding 1956 figures. The provinces of Newfoundland, Prince Edward Island, Nova Scotia and Manitoba were not affected.



Table 3. - Construction of dwelling units in urban centres of 5,000 or more - con.

	1957			1956		
	Jan. 1 to May 31		Under construction May 31	Jan. 1 to May 31		Under construction May 31
	Started	Completed		Started	Completed	
Saskatchewan - con.						
North Battleford	41	20	48	9	25	11
Prince Albert	64	47	102	32	29	79
Regina	63	513	174	222	472	500
Saskatoon	225	326	344	285	223	436
Swift Current	28	21	63	43	16	80
Weyburn	13	11	18	-	7	7
Yorkton	53	10	62	15	51	33
Alberta	1,423 (1,412)	2,862 (2,810)	2,683 (2,664)	- 2,367	- 3,034	- 3,912
Calgary (1)	817	1,150	1,179	1,728	1,359	2,021
Camrose	2	21	10	(3)	(3)	(3)
Edmonton (1)	417	1,457	1,267	427	1,410	1,605
Grande Prairie	5	31	5	(3)	(3)	(3)
Lethbridge	65	76	78	120	157	123
Lloydminster (pt)(2)	4	-	4	(3)	(3)	(3)
Medicine Hat	89	80	103	49	51	68
Red Deer	24	47	37	43	57	95
British Columbia	2,978 (2,975)	3,714 (3,660)	5,432 (5,266)	- 4,179	- 3,513	- 6,429
Chilliwack	25	36	41	37	30	63
Dawson Creek	-	40	115	(3)	(3)	(3)
Kamloops	17	20	32	16	19	30
Kelowna	20	33	31	51	9	78
Kimberley	-	2	2	1	4	2
Nanaimo	43	39	138	82	60	143
Nelson	-	1	2	2	6	27
Penticton	67	64	81	32	37	42
Port Alberni	57	54	177	55	44	132
Prince George	3	14	51	(3)	(3)	(3)
Prince Rupert	22	8	56	12	10	34
Trail	2	3	6	8	11	15
Vancouver (1)	2,318	3,087	3,980	3,273	2,686	4,936
Vernon	38	22	77	29	18	51
Victoria (1)	366	291	643	581	579	876

(1) Metropolitan Area. See "Metropolitan Areas", page 5. (2) Remainder of Lloydminster included under Saskatchewan. (3) Included in "Urban, 5,000 or more" for first time beginning January, 1957.

Note - See paragraph 2 of "Introduction", page 3 re: transfer of some municipalities to "Urban, 5,000 or more" in 1957. For comparison with 1956, the urban municipalities so transferred have been deleted in the adjusted 1957 provincial totals shown in parentheses on the same line as the corresponding 1956 figures. The provinces of Newfoundland, Prince Edward Island, Nova Scotia and Manitoba were not affected.

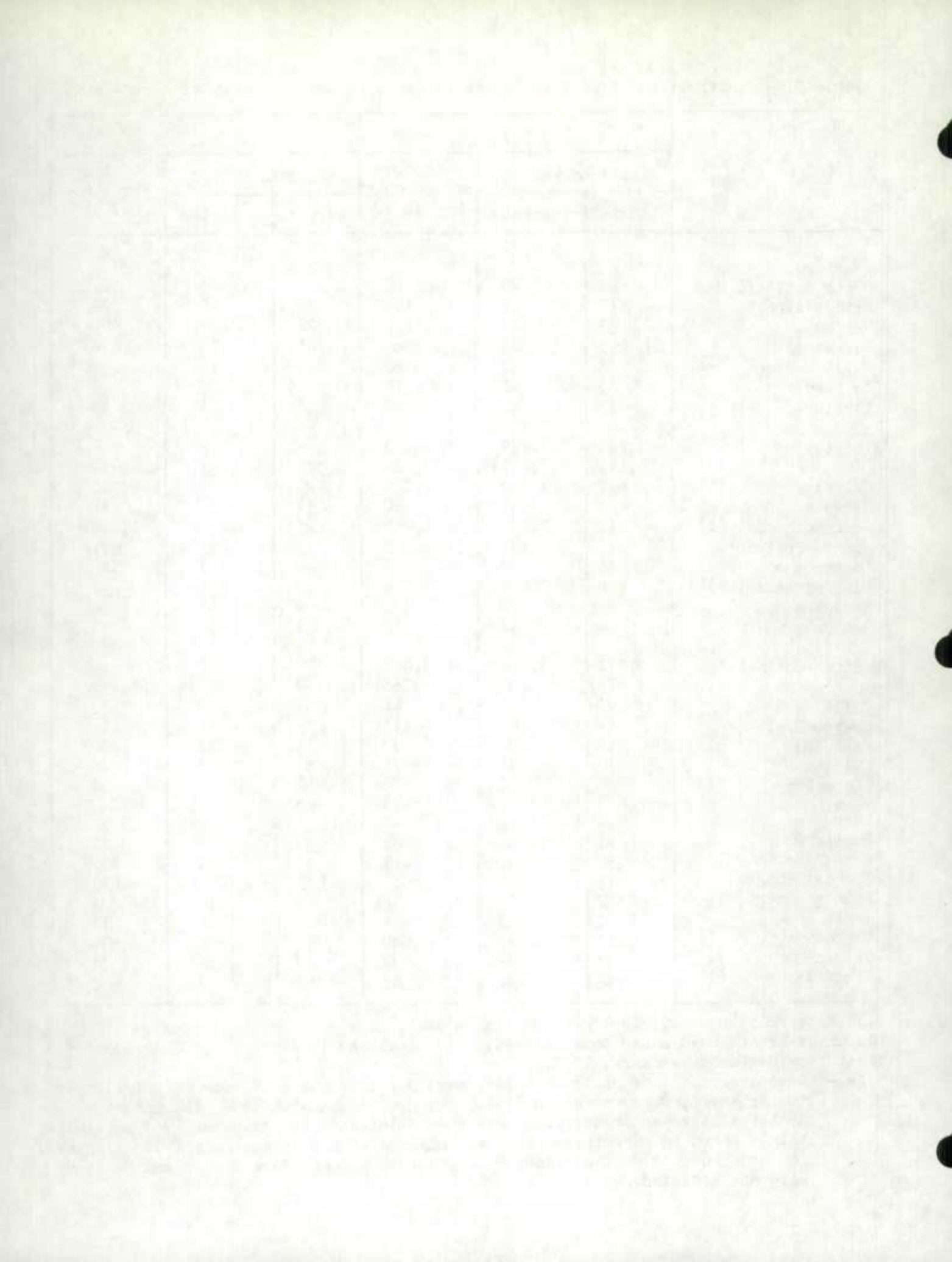


Table 4. - Construction of dwelling units in metropolitan areas

	1957			1956		
	Jan. 1 to May 31		Under construction May 31	Jan. 1 to May 31		Under construction May 31
	Started	Completed		Started	Completed	
Calgary	817	1,150	1,179	1,728	1,359	2,021
Calgary city	673	991	973	1,501	1,195	1,771
Bowness town	83	91	81	108	70	84
Forest Lawn town	45	41	76	50	42	73
Other parts	16	27	49	69	52	93
Edmonton	417	1,457	1,267	427	1,410	1,605
Edmonton city	376	1,283	1,194	321	1,134	1,471
Beverly town	16	83	39	15	82	39
Jasper Place town	25	91	34	91	194	95
Other parts	*	*	*	*	*	*
Halifax	217	445	447	446	414	797
Halifax city	60	113	80	98	112	176
Dartmouth town	29	107	63	123	97	135
Armdale and Fairview area	30	53	53	49	26	76
Cole Harbour and Eastern Passage area	7	18	23	24	10	129
Darmouth Lakes area	45	78	125	73	93	153
Herring Cove and Spryfield area	26	40	71	52	47	80
Rockingham and Bedford area	19	33	28	26	26	45
Woodside and Imperial area	1	3	4	1	3	3
Indian Reserves	-	-	-	-	-	-
Hamilton	802	1,035	1,494	1,015	1,303	1,843
Hamilton city	372	490	707	460	476	844
Burlington town	24	36	47	99	110	161
Dundas town	59	66	103	36	54	96
Stoney Creek village	41	51	73	81	102	124
Waterdown village	3	1	5	4	16	13
Ancaster twp.	81	108	142	64	110	165
Barton twp.	12	14	28	9	3	12
Flamborough E. twp.	49	79	76	71	153	117
Flamborough W. twp.	21	17	33	18	26	41
Nelson twp.	72	111	164	74	118	149
Saltfleet twp.	68	62	116	99	135	121

Note - See "Metropolitan Areas", page 5.

* Not yet covered

TABLE I

Year	1950	1951	1952	1953	1954	1955	1956	1957	1958	1959	1960
Population	1,000,000	1,050,000	1,100,000	1,150,000	1,200,000	1,250,000	1,300,000	1,350,000	1,400,000	1,450,000	1,500,000
GDP	100	110	120	130	140	150	160	170	180	190	200
Per Capita GDP	100	105	110	115	120	125	130	135	140	145	150
Unemployment	5%	6%	7%	8%	9%	10%	11%	12%	13%	14%	15%
Inflation	2%	3%	4%	5%	6%	7%	8%	9%	10%	11%	12%
Government Expenditure	10	12	14	16	18	20	22	24	26	28	30
Government Revenue	8	9	10	11	12	13	14	15	16	17	18
Government Deficit	2	3	4	5	6	7	8	9	10	11	12
Government Debt	0	2	4	6	8	10	12	14	16	18	20
Government Savings	0	1	2	3	4	5	6	7	8	9	10
Government Investment	0	1	2	3	4	5	6	7	8	9	10
Government Consumption	0	1	2	3	4	5	6	7	8	9	10
Government Transfer	0	1	2	3	4	5	6	7	8	9	10
Government Debt Service	0	1	2	3	4	5	6	7	8	9	10
Government Interest	0	1	2	3	4	5	6	7	8	9	10
Government Capital Expenditure	0	1	2	3	4	5	6	7	8	9	10
Government Current Expenditure	0	1	2	3	4	5	6	7	8	9	10
Government Revenue	8	9	10	11	12	13	14	15	16	17	18
Government Deficit	2	3	4	5	6	7	8	9	10	11	12
Government Debt	0	2	4	6	8	10	12	14	16	18	20
Government Savings	0	1	2	3	4	5	6	7	8	9	10
Government Investment	0	1	2	3	4	5	6	7	8	9	10
Government Consumption	0	1	2	3	4	5	6	7	8	9	10
Government Transfer	0	1	2	3	4	5	6	7	8	9	10
Government Debt Service	0	1	2	3	4	5	6	7	8	9	10
Government Interest	0	1	2	3	4	5	6	7	8	9	10
Government Capital Expenditure	0	1	2	3	4	5	6	7	8	9	10
Government Current Expenditure	0	1	2	3	4	5	6	7	8	9	10

Table 4. - Construction of dwelling units in metropolitan areas - con.

	1957			1956		
	Jan. 1 to May 31		Under construction May 31	Jan. 1 to May 31		Under construction May 31
	Started	Completed		Started	Completed	
London	358	526	443	622	611	812
London city	65	132	82	97	71	204
London twp.	190	260	220	347	420	425
Westminster twp.	103	134	141	178	120	183
Montreal	5,322	6,440	7,715	7,398	9,052	11,317
Montreal city	2,884	3,310	3,867	4,580	4,903	6,336
Dorval city	18	78	61	44	185	60
Jacques Cartier city	71	130	101	88	104	137
Lachine city	33	80	89	75	158	163
Longueuil city	44	40	47	60	103	135
Outremont city	1	8	6	7	18	8
St-Lambert city	37	42	46	47	84	61
St-Laurent city	380	171	383	199	143	279
St-Michel city	391	359	446	260	429	336
Verdun city	9	28	16	87	49	139
Westmount city	161	10	165	-	15	214
Anjou town	38	75	54	111	68	166
Baie-d'Urfé town	23	34	30	37	52	68
Beaconsfield town	41	72	59	55	141	100
Côte-St-Luc town	89	165	146	212	155	343
Greenfield Park town	7	29	17	25	118	67
Hampstead town	-	2	-	1	2	3
Ile-Dorval town	-	-	-	-	-	-
L'Abord-à-Plouffe town	45	81	72	64	234	131
LaSalle town	200	287	571	214	462	497
Laval-des-Rapides town	121	129	174	114	149	154
Le Moyne town	16	41	29	30	26	56
Mackayville town	2	17	9	30	40	40
Montreal E. town	3	1	16	14	22	18
Montreal N. town	230	255	289	349	340	544
Montreal S. town	30	15	36	10	43	32
Montreal W. town	45	30	51	13	45	78
Mount Royal town	52	137	258	78	93	173
Pointe-aux-Trembles town	22	155	113	152	147	323
Pointe-Claire town	49	203	106	99	214	171

Note - See "Metropolitan Areas", page 5.

Table 4. - Construction of dwelling units in metropolitan areas - con.

	1957			1956		
	Jan. 1 to May 31		Under construction May 31	Jan. 1 to May 31		Under construction May 31
	Started	Completed		Started	Completed	
Montreal - con.						
Pont Viau town	79	106	119	62	115	91
Préville town	1	16	5	36	87	48
Rivière-des- Prairies town	9	25	17	12	37	30
Roxboro town	42	32	40	20	129	62
Ste-Anne-de-Belle- vue town	5	15	9	14	9	16
St-Léonard-de-Port Maurice town	39	33	37	5	2	5
St-Pierre town	61	104	139	41	19	43
Ste-Geneviève-de- Pierrefonds village	5	4	4	16	17	18
Saraguay village	-	-	1	4	7	10
Senneville village	2	5	5	3	6	5
Asile-St-Jean-de- Dieu mun.	-	-	-	-	-	-
Côte-de-Liesse mun.	-	-	-	-	-	-
Dollard-des-Ormeaux mun.	1	2	1	1	-	1
Notre-Dame-de-Liesse mun.	-	-	-	-	-	-
Ste-Anne-de-Bout-de- l'Ile mun.	-	-	-	-	-	-
Ste-Geneviève mun.	29	102	71	113	69	135
St-Joachim-de-la- Pointe-Claire mun.	2	2	2	5	5	6
St-Raphael-de-l'Ile- Bizard mun.	5	10	8	11	8	15
Ottawa and Hull	980	1,392	1,763	1,453	1,484	2,369
Ottawa city	637	861	1,115	746	918	1,369
Hull city	55	65	82	151	100	224
Aylmer town	1	7	10	4	7	8
Eastview town	79	172	168	192	140	203
Gatineau town	35	31	65	68	18	87
Deschênes village	3	4	4	2	2	2

Note - See "Metropolitan Areas", page 5.

Journal of the [illegible]

Date	Place	Description	Remarks
[illegible]	[illegible]	[illegible]	[illegible]
[illegible]	[illegible]	[illegible]	[illegible]
[illegible]	[illegible]	[illegible]	[illegible]
[illegible]	[illegible]	[illegible]	[illegible]
[illegible]	[illegible]	[illegible]	[illegible]
[illegible]	[illegible]	[illegible]	[illegible]
[illegible]	[illegible]	[illegible]	[illegible]
[illegible]	[illegible]	[illegible]	[illegible]
[illegible]	[illegible]	[illegible]	[illegible]
[illegible]	[illegible]	[illegible]	[illegible]
[illegible]	[illegible]	[illegible]	[illegible]
[illegible]	[illegible]	[illegible]	[illegible]
[illegible]	[illegible]	[illegible]	[illegible]
[illegible]	[illegible]	[illegible]	[illegible]
[illegible]	[illegible]	[illegible]	[illegible]
[illegible]	[illegible]	[illegible]	[illegible]
[illegible]	[illegible]	[illegible]	[illegible]
[illegible]	[illegible]	[illegible]	[illegible]
[illegible]	[illegible]	[illegible]	[illegible]
[illegible]	[illegible]	[illegible]	[illegible]

Table 4. - Construction of dwelling units in metropolitan areas - con.

	1957			1956		
	Jan. 1 to May 31		Under construction May 31	Jan. 1 to May 31		Under construction May 31
	Started	Completed		Started	Completed	
Ottawa and Hull - con.						
Pointe-à-Gatineau village	28	28	57	25	15	41
Rockcliffe Park village	2	6	7	7	4	13
Templeton village	7	1	10	4	4	15
Gloucester twp.	48	91	98	114	130	179
Hull S. mun.	21	23	43	44	16	86
Nepean twp.	57	100	94	91	127	134
Templeton W. mun.	7	3	10	5	3	8
Quebec	423	567	685	916	1,214	821
Québec city	85	135	147	344	583	297
Giffard city	17	25	19	30	31	30
Lauzon city	23	11	18	19	8	22
Lévis city	18	36	14	22	29	25
Ste-Foy city	102	116	176	222	212	215
Sillery city	8	23	19	22	42	12
Beauport town	21	29	35	40	58	11
Charlesbourg town	37	33	62	78	60	87
Château-d'Eau town	-	1	2	4	5	4
Courville town	9	16	13	21	9	21
La Petite-Rivière town	12	23	15	11	48	7
Loretteville town	6	10	10	13	10	9
Montmorency town	1	3	3	16	21	16
Québec W. town	14	8	35	29	27	18
Villeneuve town	2	1	2	4	3	5
Charney village	4	9	4	12	12	14
Notre-Dame-de-Lorette village	1	-	3	-	6	-
Beauport W. mun.	1	-	8	-	1	-
Charlesbourg E. mun.	-	-	2	-	5	1
Charlesbourg W. mun.	1	-	2	1	3	1
L'Ancienne-Lorette mun.	9	12	18	3	24	1
Orsainville mun.	18	18	23	-	-	1
St-Ambroise-de-la-Jeune Lorette mun.	4	4	8	7	2	6

Note - See "Metropolitan Areas", page 5.

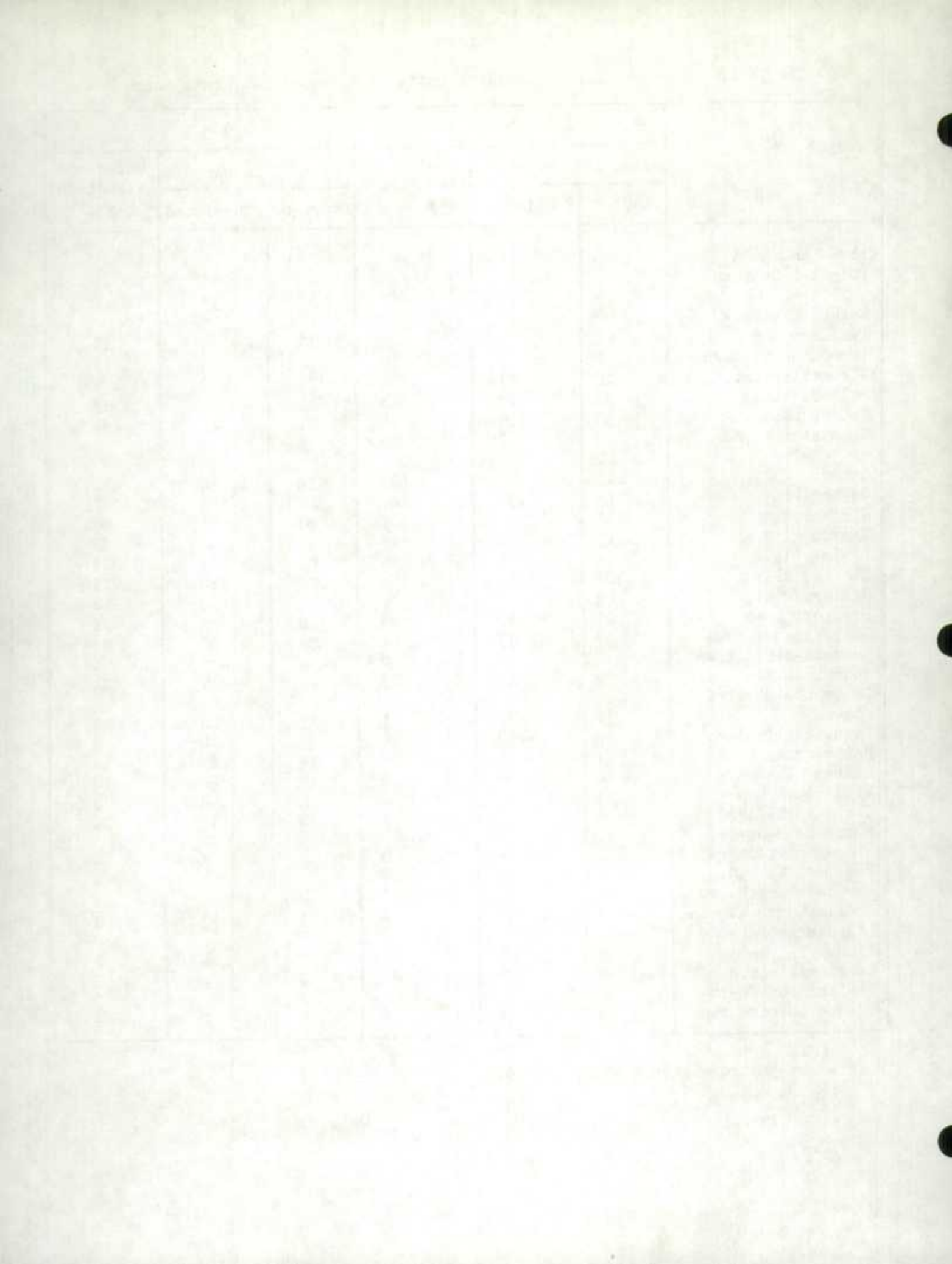


Table 4. - Construction of dwelling units in metropolitan areas - con.

	1957			1956		
	Jan. 1 to May 31		Under construction May 31	Jan. 1 to May 31		Under construction May 31
	Started	Completed		Started	Completed	
Quebec - con.						
St-David-de-l'Aube- Rivière mun.	3	5	2	2	3	2
St-Félix-du-Cap- Rouge mun.	3	5	7	2	3	3
St-Michel-Archange	-	-	-	-	-	-
Ste-Monique-des- Sauls mun.	5	29	12	2	-	2
St-Nicolas mun.	1	4	2	1	4	-
St-Romuald-d' Etchemin mun.	7	1	11	6	4	5
St -Télesphore mun.	1	6	1	4	-	5
Ste-Thérèse-de- Lisieux mun.	7	1	9	1	1	1
Indian Reserves	3	3	3	-	-	-
Saint John, N.B.	94	66	194	71	18	154
Saint John city	46	17	127	12	3	92
Lancaster city	14	10	20	27	7	31
Rothesay village	1	5	3	1	-	1
Lancaster parish	2	-	5	5	-	5
Rothesay parish	-	2	-	-	-	-
Simmonds parish	29	32	37	26	8	25
Westfield parish	2	-	2	-	-	-
St. John's, Nfld.	57	110	278	139	230	306
St. John's city	20	36	110	47	88	123
Mount Pearl Park & Glendale Section	4	7	21	29	32	38
Blackmarsh Section	2	1	10	3	11	9
Freshwater Bay Section	2	5	13	4	27	12
Goulds Section	4	5	16	13	12	29
Higgings Line Section	5	9	30	10	16	29
Kanes Valley Section	6	21	15	3	20	11
Kenmount Valley Section	-	5	15	3	5	12
Logy Bay Section	13	13	41	22	17	31

Note - See "Metropolitan Areas", page 5.

Table with multiple columns and rows, containing faint text and numbers. The table structure is as follows:

Column 1	Column 2	Column 3	Column 4	Column 5	Column 6	Column 7
1	2	3	4	5	6	7
8	9	10	11	12	13	14
15	16	17	18	19	20	21
22	23	24	25	26	27	28
29	30	31	32	33	34	35
36	37	38	39	40	41	42
43	44	45	46	47	48	49
50	51	52	53	54	55	56
57	58	59	60	61	62	63
64	65	66	67	68	69	70
71	72	73	74	75	76	77
78	79	80	81	82	83	84
85	86	87	88	89	90	91
92	93	94	95	96	97	98
99	100	101	102	103	104	105

Table 4. - Construction of dwelling units in metropolitan areas - con.

	1957			1956		
	Jan. 1 to May 31		Under construction May 31	Jan. 1 to May 31		Under construction May 31
	Started	Completed		Started	Completed	
St. John's, Nfld.con.						
Mount Scio Section	1	8	7	5	2	11
Signal Hill Section	-	-	-	-	-	1
Toronto	3,916	5,858	7,549	5,531	7,257	8,657
Toronto city	1,715	1,448	3,847	914	1,389	2,199
Leaside town	69	-	69	9	12	4
Mimico town	55	29	60	28	51	31
New Toronto town	13	24	15	12	5	24
Weston town	12	13	6	-	-	-
Forest Hill village	38	154	40	124	19	132
Long Branch village	117	115	183	56	47	95
Swansea village	6	53	72	105	14	114
Etobicoke twp.	446	1,041	970	999	808	1,462
Scarborough twp.	669	1,129	641	1,687	2,908	1,735
York twp.	274	529	262	380	330	693
York E. twp.	67	122	54	75	80	54
York N. twp.	435	1,201	1,330	1,142	1,594	2,114
Vancouver	2,318	3,087	3,980	3,273	2,686	4,936
Vancouver city	706	1,148	1,413	1,102	711	1,681
New Westminster city	40	32	75	46	87	63
North Vancouver city	91	95	150	101	114	164
Port Coquitlam city	37	41	61	40	29	71
Port Moody city	15	10	33	19	15	44
Burnaby Dist. mun.	287	354	440	464	646	712
Coquitlam Dist. mun.	119	151	231	153	152	248
Delta Dist. mun.	52	48	113	71	54	132
Fraser Mills Dist. mun.	-	-	-	-	-	-
North Vancouver Dist. mun.	166	373	212	353	249	512
Richmond Dist. mun.	205	244	264	231	194	289
Surrey Dist. mun.	506	415	869	514	289	772
University Endowment Area	1	1	1	1	1	3
West Vancouver Dist. mun.	93	175	118	178	145	242
Unorganized	-	-	-	-	-	-
Indian Reserves	-	-	-	-	-	3

Note - See "Metropolitan Areas", page 5.

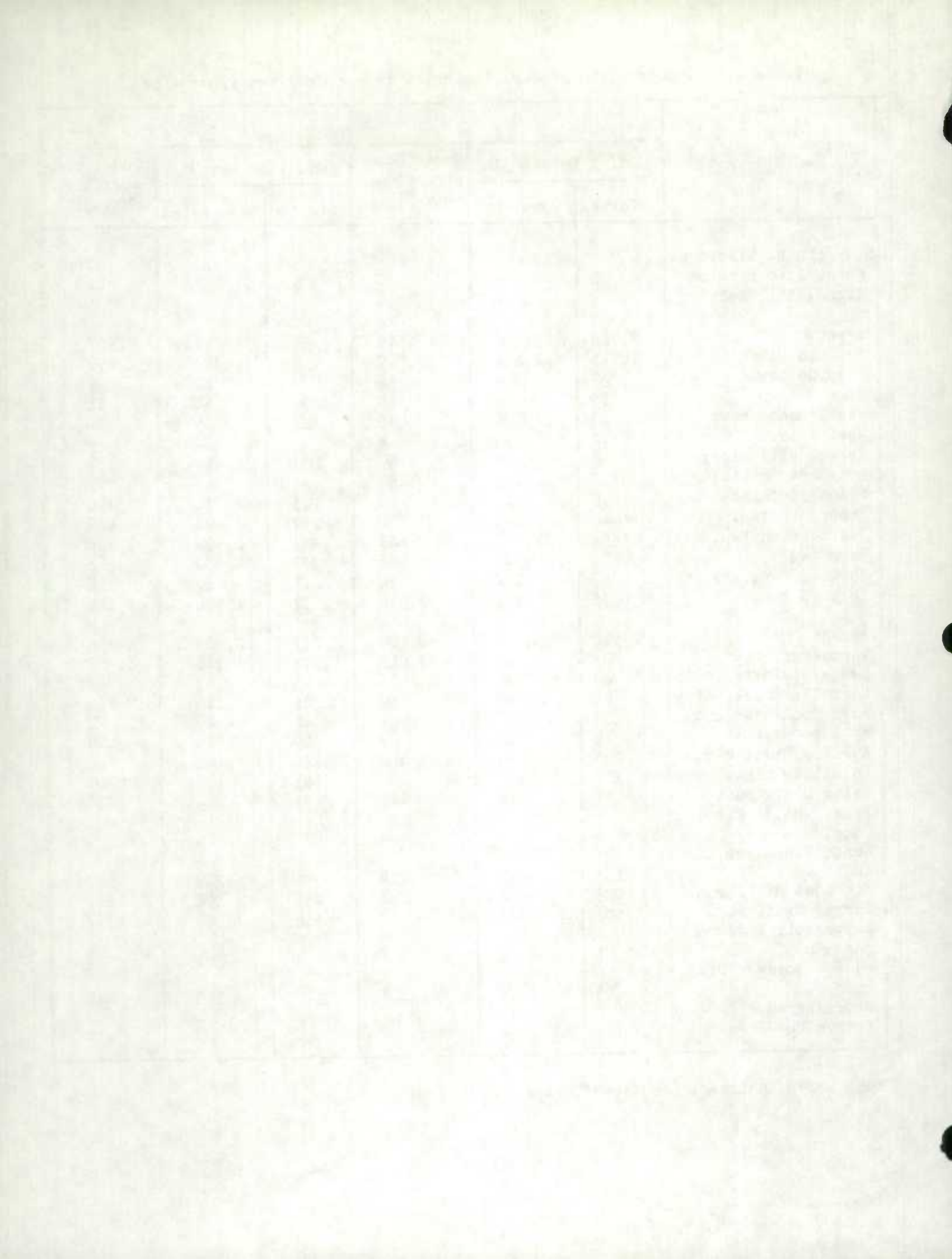


Table 4. - Construction of dwelling units in metropolitan areas - con.

	1957			1956		
	Jan. 1 to May 31		Under construction May 31	Jan. 1 to May 31		Under construction May 31
	Started	Completed		Started	Completed	
Victoria	366	291	643	581	579	876
Victoria city	73	39	112	147	141	190
Sidney village	1	-	13	4	-	4
Central Saanich						
Dist. mun.	3	-	26	8	12	21
Esquimalt Dist. mun.	28	46	47	56	46	71
Oak Bay Dist. mun.	78	61	89	86	87	120
Saanich Dist. mun.	176	145	318	277	293	452
Unorganized (North Saanich)	7	-	38	3	-	18
Indian Reserves	-	-	-	-	-	-
Windsor	394	455	776	560	540	913
Windsor city	198	159	345	187	121	240
LaSalle town	5	15	32	2	8	19
Ojibway town	-	-	-	-	-	-
Riverside town	52	100	102	190	124	239
Techumseh town	1	6	12	19	8	22
St. Clair Beach village	-	6	12	13	-	35
Sandwich E. twp.	76	65	111	70	23	127
Sandwich S. twp.	1	6	6	18	23	25
Sandwich W. twp.	61	98	156	61	233	206
Winnipeg	430	1,091	1,133	910	1,337	2,670
Winnipeg city	161	357	344	316	450	1,065
St. Boniface city	24	244	303	120	151	282
St. James city	17	109	45	67	151	356
Transcona town	42	62	65	148	91	199
Tuxedo town	10	13	18	8	21	20
Brookland village	7	3	15	2	24	20
Assiniboia mun.	13	33	42	29	20	40
Charleswood mun.	6	18	24	16	27	42
Fort Garry mun.	21	83	68	20	36	91
Kildonan E. mun.	56	31	86	36	176	254
Kildonan N. mun.	19	8	26	17	32	31
Kildonan W. mun.	35	68	58	97	76	172
Old Kildonan mun.	2	3	4	3	6	5
St. Vital mun.	17	59	35	31	76	93

Note - See "Metropolitan Areas", page 5.

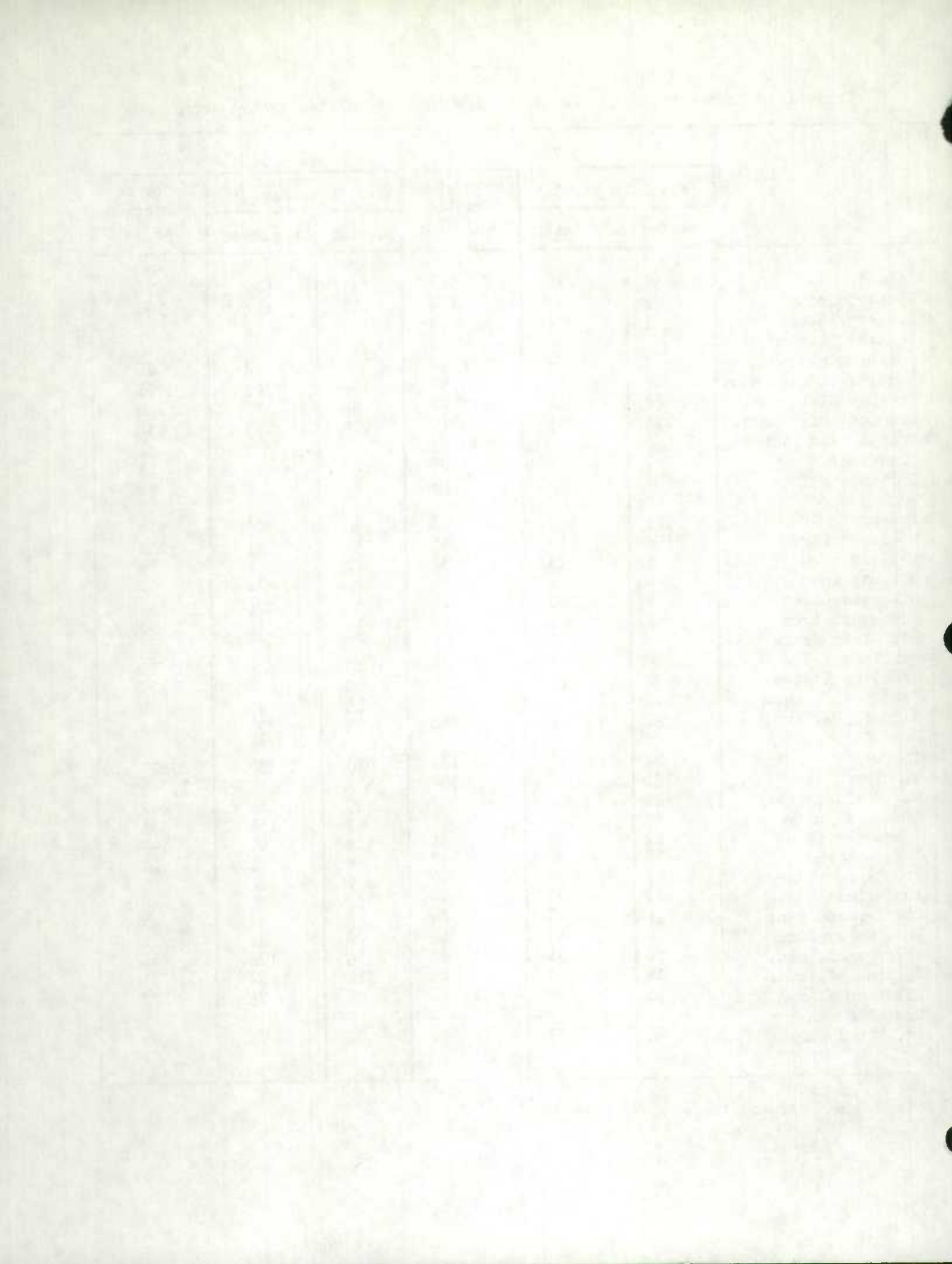


Table 5. - Monthly starts by region

	Canada	Newfound- land	Maritime Provinces	Quebec	Ontario	Prairie Provinces	British Columbia
1948 - Total	90,194	..	5,712	24,982	29,976	17,891	11,633
1949 - Total	89,509	..	5,023	24,196	34,023	16,565	9,702
1950 - Total	92,531	2,090	5,361	28,515	33,430	15,599	7,536
1951 - Total	68,579	1,101	2,461	21,193	27,349	10,779	5,696
1952 - Total	83,246	1,579	3,141	26,355	30,016	15,044	7,111
1953 - Total	102,409	1,782	4,139	30,249	38,873	18,776	8,590
1954 - Total	113,527	1,345	4,737	29,958	46,382	21,502	9,603
1955 - Total	138,276	1,613	6,146	39,852	53,456	21,595	15,614
1956 - Total	127,311	1,652	6,366	35,999	48,712	19,645	14,937
1956 January *	4,183	66	120	847	2,147	283	720
February *	4,660	70	98	1,595	1,728	349	820
March *	5,630	11	79	1,678	2,358	616	888
April *	10,401	37	251	3,148	4,311	1,335	1,319
May *	15,924	225	957	4,939	5,761	2,096	1,946
June *	19,402	300	1,093	5,395	7,227	3,671	1,716
July *	15,931	339	932	4,286	6,078	2,200	2,096
August *	13,999	160	670	3,735	5,275	2,910	1,249
September*	13,307	224	779	3,408	4,638	2,886	1,372
October	11,751	111	759	3,142	4,927	1,893	919
November	8,049	86	487	2,542	2,716	1,019	1,199
December	4,074	23	141	1,284	1,546	387	693
1957 January	1,710	9	29	398	711	198	365
February	1,998	4	47	727	689	143	388
March	4,061	2	69	1,353	1,705	157	775
April	7,940	51	384	2,495	3,198	691	1,121
May	11,893	90	727	3,466	4,267	2,220	1,123

* Revised - See paragraph 2 of "Reliability of the Estimates," pages 4 and 5.

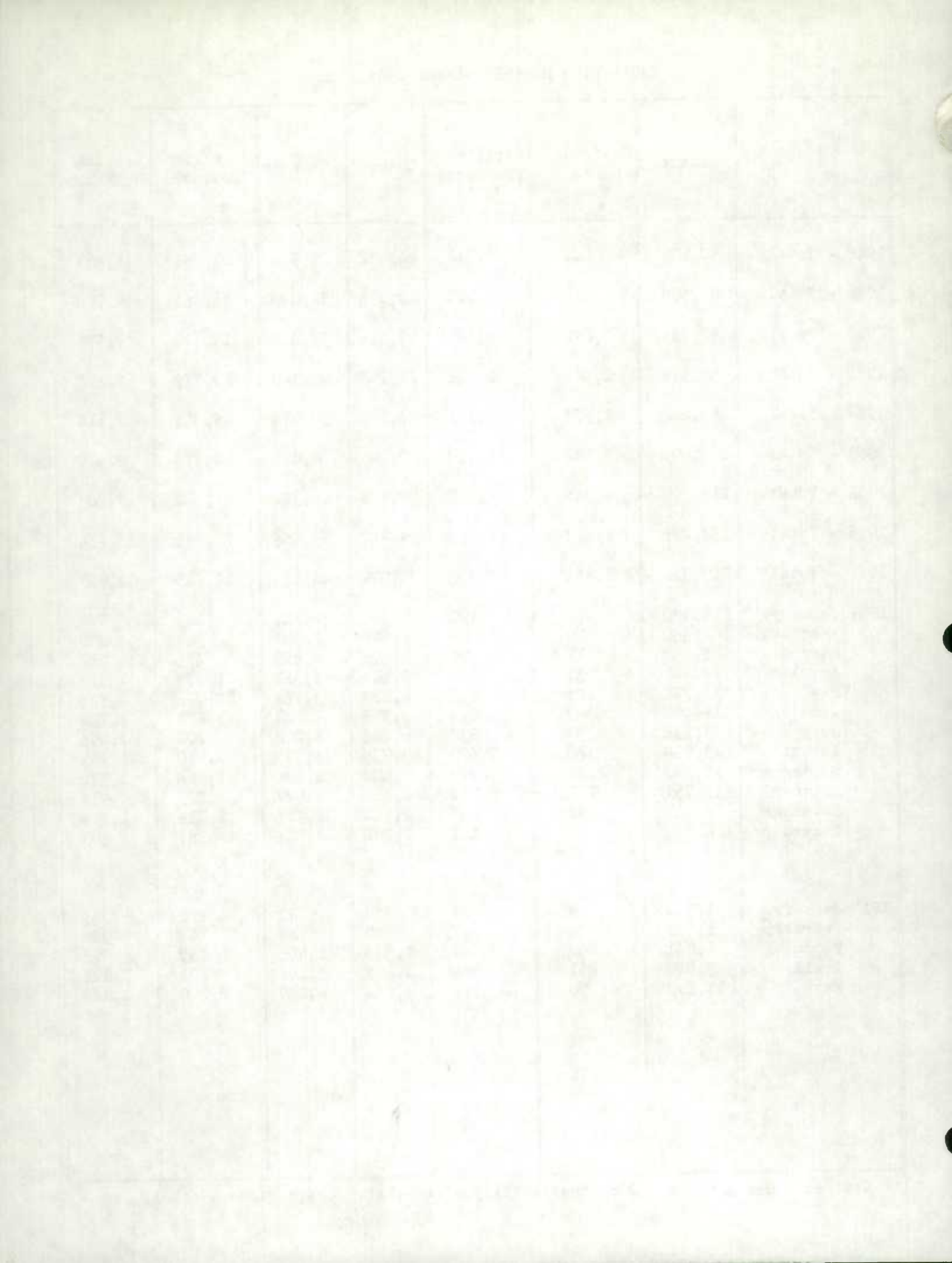


Table 6. - Monthly completions by region

	Canada	Newfound- land	Maritime Provinces	Quebec	Ontario	Prairie Provinces	British Columbia
1948 - Total	76,097	..	4,809	20,171	26,391	13,995	10,731
1949 - Total	87,533	..	5,115	22,912	31,440	17,794	10,272
1950 - Total	89,015	1,716	5,493	27,237	31,318	14,691	8,560
1951 - Total	81,310	941	3,375	26,686	31,732	11,893	6,683
1952 - Total	73,087	1,131	3,084	22,407	27,461	11,976	7,028
1953 - Total	96,839	1,480	3,744	29,803	35,173	18,695	7,944
1954 - Total	101,965	1,160	4,099	26,182	41,085	20,281	9,158
1955 - Total	127,929*	1,284	5,372	34,866	51,612*	20,761*	14,034
1956 - Total	135,700	1,510	5,170	41,166	51,201	21,663	14,990
1956 January	9,482	139	270	2,477	4,234	1,429	933
February	7,488	114	207	2,333	2,893	1,087	854
March	8,694	36	127	3,114	3,415	1,124	878
April	9,120	81	245	2,837	3,744	1,286	927
May	9,657	63	216	3,416	4,075	1,100	787
June	13,571	116	594	4,072	4,734	2,176	1,879
July	9,663	79	376	2,720	3,710	1,621	1,157
August	10,732	101	440	3,401	3,579	2,022	1,189
September	12,213	77	614	3,822	4,322	2,089	1,289
October	18,540	358	782	5,632	6,752	2,986	2,030
November	14,085	146	769	4,003	4,959	2,615	1,593
December	12,455	200	530	3,339	4,784	2,128	1,474
1957 January	10,249	146	442	2,273	4,412	1,951	1,025
February	7,527	36	338	2,114	2,784	1,157	1,098
March	6,861	37	255	1,902	2,712	1,217	738
April	7,019	70	237	2,061	3,064	898	689
May	7,597	149	406	2,384	2,790	842	1,026

* Revised due to under-tabulation of completions in Scarborough Township and Edmonton for May 1955.

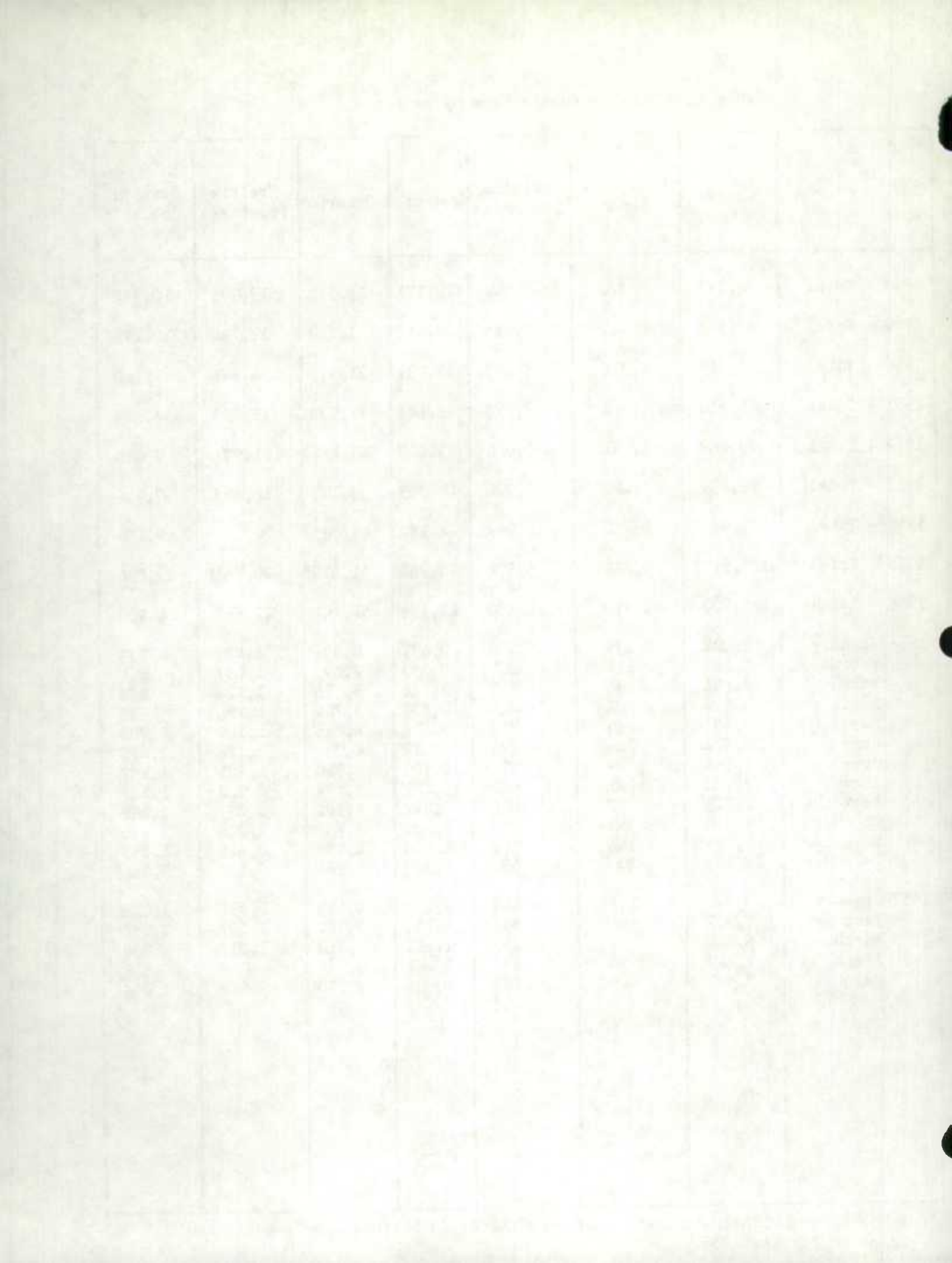


Table 7. - Dwelling units completed during May 1957, by time under construction for Canada and the provinces

	Total	Months				Over 1 year	Unknown
		1-3	4-6	7-9	10-12		
Canada	7,597	839	2,221	2,269	1,459	809	-
Newfoundland	149	2	14	60	43	30	-
Prince Edward Island	8	-	2	2	1	3	-
Nova Scotia	167	29	27	51	50	10	-
New Brunswick	231	47	17	64	75	28	-
Quebec	2,384	358	941	665	231	189	-
Ontario	2,790	201	902	896	583	208	-
Manitoba	245	10	14	158	39	24	-
Saskatchewan	223	-	18	39	20	146	-
Alberta	374	86	98	84	74	32	-
British Columbia	1,026	106	188	250	343	139	-

Table 8. - Dwelling units completed during May 1957, by time under construction as a percentage of total completions for Canada and regions.

	Total	Months				Over 1 year
		1-3	4-6	7-9	10-12	
Canada	100	% 11	% 29	% 30	% 19	% 11
Newfoundland	100	1	10	40	29	20
Maritimes	100	19	11	29	31	10
Quebec	100	15	39	28	10	8
Ontario	100	7	32	32	21	3
Prairies	100	11	16	33	16	24
British Columbia	100	10	18	24	34	14

Table with 6 columns and 4 rows. The content is extremely faint and illegible.

Table with 6 columns and 4 rows. The content is extremely faint and illegible.

Table 9. - Completions by month by average time under construction

	Canada	Newfound- land	Maritime Provinces	Quebec	Ontario	Prairie Provinces	British Columbia
1948 - Average	6.5	..	6.5	5.5	6.8	6.3	7.5
1949 - Average	7.0	..	7.9	6.4	7.5	6.0	8.1
1950 - Average	7.1	6.5	6.8	6.1	7.9	6.2	9.1
1951 - Average	7.3	6.6	7.6	6.7	7.5	6.9	9.5
1952 - Average	7.0	7.2	9.8	5.6	7.8	6.3	8.4
1953 - Average	6.3	7.9	7.3	5.5	6.6	6.4	6.8
1954 - Average	6.3	9.8	6.6	5.4	6.5	6.4	7.4
1955 - Average	6.2	12.7	6.2	5.9	6.1	6.1	6.6
1956 - Average	6.4	10.6	6.5	5.9	6.3	6.4	7.4
1956 January	6.6	7.5	7.9	6.0	6.7	6.9	7.1
February	6.3	14.2	5.5	6.1	5.9	6.4	7.0
March	6.6	7.6	6.1	6.5	6.2	7.3	7.2
April	7.4	22.3	8.9	6.9	7.5	7.1	7.4
May	7.3	7.7	6.3	6.7	7.8	8.1	7.2
June	7.7	10.5	7.1	7.7	6.9	8.4	8.8
July	6.5	7.8	9.6	6.0	6.1	7.0	7.4
August	5.8	9.7	7.8	5.4	6.0	5.1	6.3
September	5.3	14.9	5.7	4.7	5.0	4.9	7.7
October	6.0	10.5	5.4	5.0	6.0	6.1	8.3
November	5.7	8.7	5.7	5.5	5.6	5.4	7.0
December	5.9	8.6	4.7	5.5	6.1	6.1	6.3
1957 January	7.0	13.2	7.3	5.6	7.3	7.5	6.7
February	6.8	7.3	7.8	6.5	6.9	6.6	7.4
March	6.9	7.8	7.1	6.5	7.2	6.4	7.4
April	7.7	10.9	9.7	6.6	8.3	6.8	8.6
May	8.3	10.5	9.3	7.1	7.9	11.0	9.6

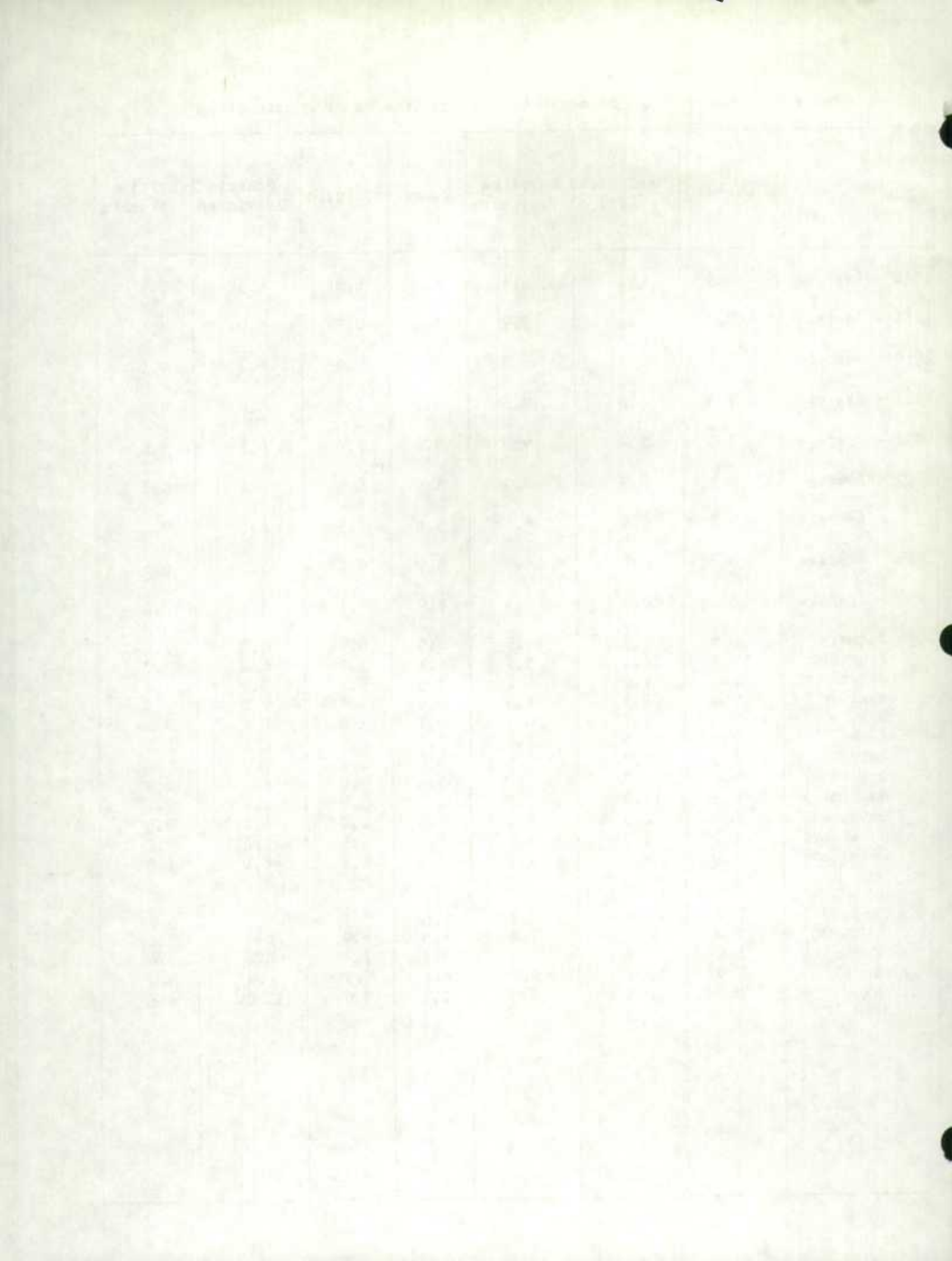


Table 10. - Completions during the first five months of 1957, by type of dwelling for Canada and the provinces

	Total	One-family detached	Two-family detached	Row or terrace	Apartment or flat
Canada	39,253	25,832	2,772	880	9,769
Newfoundland	438	438	-	-	-
Prince Edward Island	42	38	4	-	-
Nova Scotia	745	584	8	4	149
New Brunswick	891	859	18	-	14
Quebec	10,734	4,633	1,676	514	3,911
Ontario	15,762	10,963	798	54	3,947
Manitoba	1,293	938	42	40	273
Saskatchewan	1,278	977	46	90	165
Alberta	3,494	3,141	44	102	207
British Columbia	4,576	3,261	136	76	1,103

Table 11. - Starts during the first five months of 1957, by type of dwelling for Canada and the provinces

	Total	One-family detached	Two-family detached	Row or terrace	Apartment or flat
Canada	27,602	17,198	2,596	940	6,868
Newfoundland	156	154	2	-	-
Prince Edward Island	9	5	4	-	-
Nova Scotia	699	593	-	-	106
New Brunswick	548	531	6	-	11
Quebec	8,439	3,148	1,752	623	2,916
Ontario	10,570	6,818	580	167	3,005
Manitoba	741	650	20	3	68
Saskatchewan	658	560	6	30	62
Alberta	2,010	1,618	92	114	186
British Columbia	3,772	3,121	134	3	514

Note - 1957 figures on starts subject to revision - see paragraph 2 of "Reliability of the estimates", page 4.

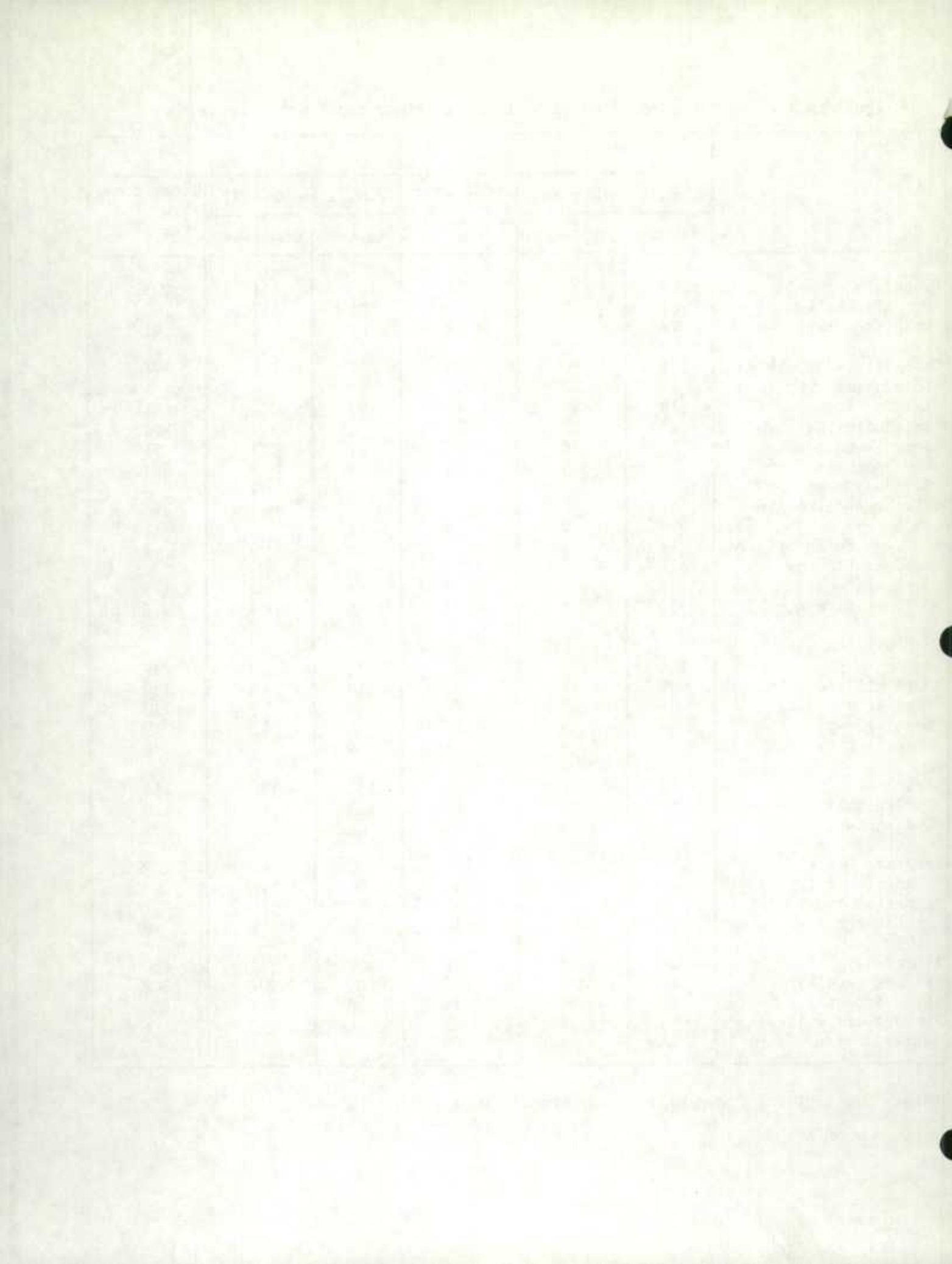
—

—

Appendix A - Construction of dwelling units in other major urban areas

	1957			1956		
	Jan. 1 to May 31		Under construction May 31	Jan. 1 to May 31		Under construction May 31
	Started	Completed		Started	Completed	
Brantford	89	70	201	126	141	203
Brantford city	61	55	159	101	117	182
Brantford twp.	28	15	42	25	24	21
Chicoutimi-Jonquières	136	90	138	291	141	307
Chicoutimi city	22	12	28	61	28	66
Arvida city	18	29	19	37	70	44
Chicoutimi N. town	11	17	11	74	-	74
Jonquières town	41	18	36	67	27	71
Kenogami town	24	5	24	28	9	28
Saguenay town	-	-	-	-	-	-
Rivières-du-Moulin village	9	2	8	11	2	11
St-Jean-Eudes village	-	2	-	2	-	2
St-Jean-Vianney village	1	-	2	5	-	5
Chicoutimi mun.	10	5	10	6	5	6
Fort William - Port Arthur	184	163	280	194	182	289
Fort William city	99	91	139	119	92	162
Port Arthur city	85	69	130	67	77	110
Neebing twp.	-	3	11	8	13	17
Shuniah twp.	-	-	-	-	-	-
Guelph	78	97	102	157	126	154
Guelph city	53	58	81	113	95	118
Guelph twp.	25	39	21	44	31	36
Kingston	105	196	157	130	240	182
Kingston city	79	129	103	70	126	103
Kingston twp.	21	59	44	52	110	71
Pittsburgh twp.	5	8	10	8	4	8
Kitchener	205	338	386	327	362	450
Kitchener city	145	233	280	209	206	302
Waterloo city	45	94	79	108	145	133
Bridgeport village	1	3	3	4	3	6
Waterloo twp.	14	8	24	6	8	9

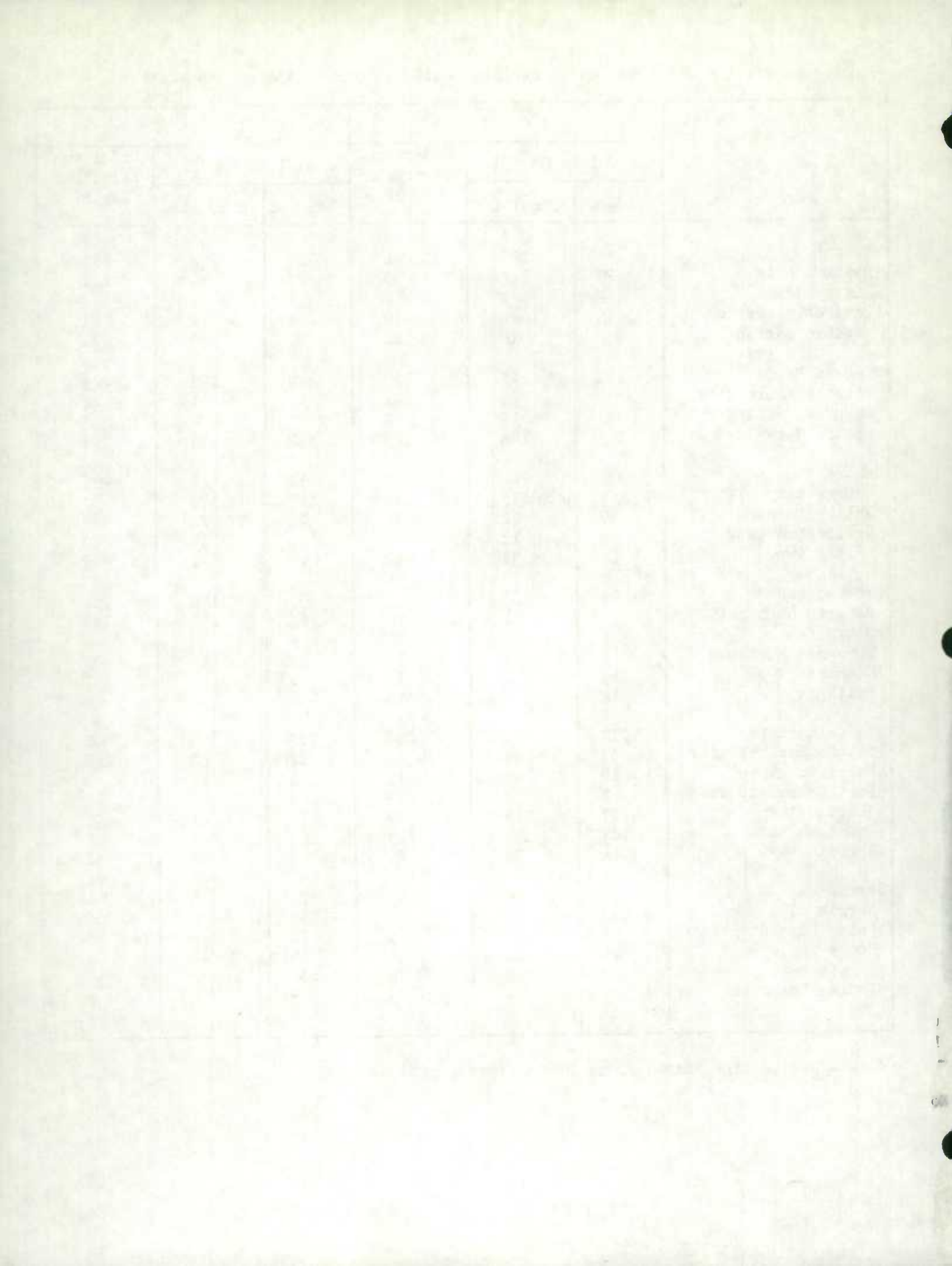
Note - See section "Other Major Urban Areas", page 5.



Appendix A - Construction of dwelling units in other major urban areas

	1957			1956		
	Jan. 1 to May 31		Under construction May 31	Jan. 1 to May 31		Under construction May 31
	Started	Completed		Started	Completed	
Moncton	36	192	84	110	102	156
Moncton city	28	166	53	72	80	104
Dieppe town	-	2	-	-	-	-
Coverdale parish	6	6	19	18	12	22
Moncton parish	2	18	12	20	10	30
Niagara Falls	116	125	150	152	129	226
Niagara Falls city	-	3	21	15	11	24
Chippewa village	3	16	6	5	-	5
Stamford twp.	113	106	123	132	118	197
Oshawa	236	240	258	212	247	206
Oshawa city	140	173	146	147	173	138
Whitby town	39	22	34	26	22	24
Darlington twp.	16	11	36	13	31	18
Whitby twp.	41	34	42	26	21	26
Peterborough	99	122	127	133	184	181
Peterborough city	66	81	80	96	135	138
Douro twp.	4	3	7	6	2	7
Monaghan N. twp.	8	34	12	29	40	34
Otonabee twp.	13	2	15	2	1	2
Smith twp.	8	2	13	-	6	-
St. Catharines	217	235	289	326	399	501
St. Catharines city	59	46	81	82	62	102
Merritton town	10	7	13	8	17	9
Port Dalhousie town	2	7	3	4	7	6
Thorold town	27	15	29	13	21	21
Grantham twp.	103	142	143	201	245	302
Thorold twp.	16	18	20	18	47	61
Sarnia	154	138	145	321	236	394
Sarnia city	101	85	95	229	172	312
Point Edward village	2	11	5	22	19	16
Moore twp.	11	16	9	19	12	19
Sarnia twp.	40	26	36	51	33	47
Indian Reserves	-	-	-	-	-	-

Note - See section "Other Major Urban Areas", page 5.



Appendix A - Construction of dwelling units in other major urban areas

	1957			1956		
	Jan. 1 to May 31		Under construction May 31	Jan. 1 to May 31		Under construction May 31
	Started	Completed		Started	Completed	
Sault Ste. Marie	175	185	203	208	119	242
Sault Ste. Marie city	90	100	117	178	103	211
Korah twp.	38	35	39	12	2	13
Tarentorus twp.	47	50	47	18	14	18
Shawinigan Falls	58	58	70	152	80	188
Shawinigan Falls city	17	19	23	53	16	81
Grand'Mère city	27	11	28	51	32	53
Baie-de-Shawinigan village	-	-	-	-	-	-
Shawinigan E. village	-	-	-	-	-	-
Shawinigan S. village	24	22	17	46	32	52
Ste-Flore mun.	-	6	2	2	-	2
St-Théophile mun.	-	-	-	-	-	-
Sherbrooke	73	59	78	142	132	161
Sherbrooke city	68	52	73	136	113	148
Lennoxville town	5	6	5	4	8	5
Deauville village	-	1	-	-	4	-
Ascot mun.	-	-	-	2	1	3
Rock Forest mun.	-	-	-	-	6	5
Sudbury	225	257	253	325	330	339
Sudbury city	74	66	90	72	40	77
Chelmsford town	9	13	14	16	4	16
Coniston town	-	1	-	1	-	1
Copper Cliff town	-	4	-	-	-	-
Frood Mines town	-	-	-	-	-	-
Lively town	-	-	-	-	31	-
Bleazard twp.	24	35	23	21	22	21
McKim twp.	48	51	52	86	94	93
Neelon & Garson twp.	39	66	31	90	75	92
Rayside twp.	22	17	28	28	12	28
Waters twp.	9	4	15	11	52	11
Sydney - Glace Bay	70	51	266	111	81	223
Sydney city	42	21	111	46	42	83
Glace Bay town	1	3	8	3	1	7
Dominion town	-	1	-	1	-	1

te - See section "Other Major Urban Areas", page 5.

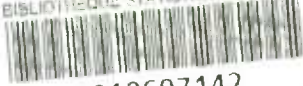
Date	Description	Debit	Credit	Balance
1900	Jan 1			
	Jan 2			
	Jan 3			
	Jan 4			
	Jan 5			
	Jan 6			
	Jan 7			
	Jan 8			
	Jan 9			
	Jan 10			
	Jan 11			
	Jan 12			
	Jan 13			
	Jan 14			
	Jan 15			
	Jan 16			
	Jan 17			
	Jan 18			
	Jan 19			
	Jan 20			
	Jan 21			
	Jan 22			
	Jan 23			
	Jan 24			
	Jan 25			
	Jan 26			
	Jan 27			
	Jan 28			
	Jan 29			
	Jan 30			
	Jan 31			
	Feb 1			
	Feb 2			
	Feb 3			
	Feb 4			
	Feb 5			
	Feb 6			
	Feb 7			
	Feb 8			
	Feb 9			
	Feb 10			
	Feb 11			
	Feb 12			
	Feb 13			
	Feb 14			
	Feb 15			
	Feb 16			
	Feb 17			
	Feb 18			
	Feb 19			
	Feb 20			
	Feb 21			
	Feb 22			
	Feb 23			
	Feb 24			
	Feb 25			
	Feb 26			
	Feb 27			
	Feb 28			
	Feb 29			
	Feb 30			
	Feb 31			

Appendix A - Construction of dwelling units in other major urban areas.

	1 9 5 7			1 9 5 6		
	Jan. 1 to May 31		Under construction May 31	Jan. 1 to May 31		Under construction May 31
	Started	Completed		Started	Completed	
Sydney - con.						
New Waterford town	-	-	3	-	1	1
North Sydney town	4	3	43	16	2	36
Sydney Mines town	4	4	22	8	7	19
Unorganized	19	19	76	32	27	71
Indian Reserves	-	-	3	5	1	5
Timmins	2	11	5	3	25	10
Timmins town	2	6	5	3	25	4
Mountjoy twp.	-	2	-	-	-	1
Tisdale twp.	-	3	-	-	-	-
Whitney twp.	-	-	-	-	-	5
Trois Rivières	105	114	133	151	140	223
Trois Rivières city	76	85	74	77	73	103
Cap-de-la-Madeleine city	29	23	53	74	56	84
St-Louis-de-France mun.	-	-	1	-	-	1
Ste-Marthe-du-Cap- de-la-Madeleine mun.	-	-	2	-	-	-
St-Michel-des-Forges	-	4	-	-	-	-
Trois Rivières mun.	-	2	3	-	11	35

Note - See section "Other Major Urban Areas", page 5.

STATISTICS CANADA LIBRARY
BIBLIOTHÈQUE STATISTIQUE CANADA



1010697142