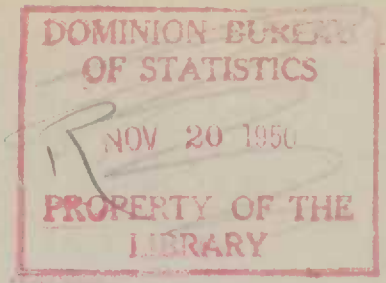


64 002

GOVERNMENT OF CANADA



NEW RESIDENTIAL CONSTRUCTION

JANUARY 1 TO AUGUST 31, 1950



DOMINION BUREAU OF STATISTICS

Department of Trade and Commerce

Vol. 3

No. 7

NEW RESIDENTIAL CONSTRUCTION

CONSTRUCTION OF DWELLING UNITS IN CANADA
FROM JANUARY 1 TO AUGUST 31, 1950

(IN 1948 AND 1949, ISSUED AS
HOUSING BULLETINS NO'S 1 TO 24)

Published by Authority of the Rt. Hon. C. D. Howe
Minister of Trade and Commerce

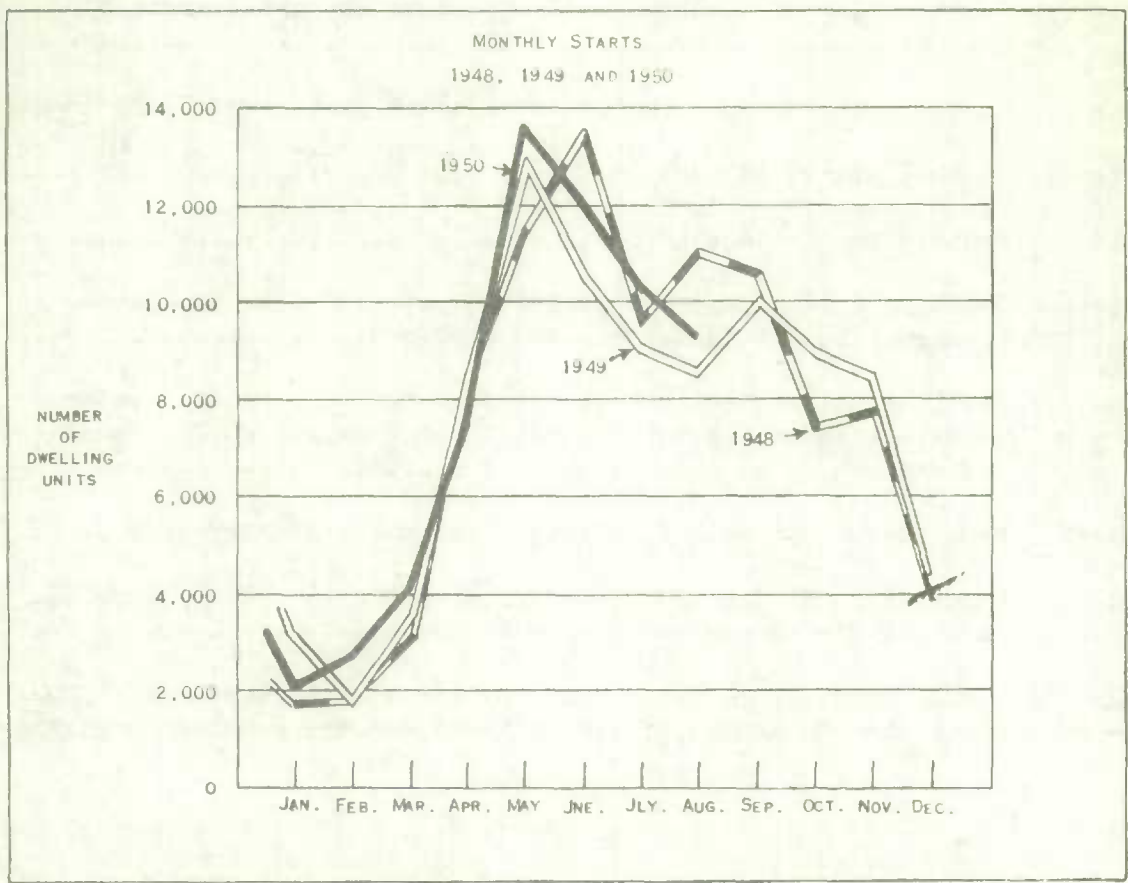
Prepared in the
Special Surveys Division
Dominion Bureau of Statistics, Ottawa

TABLE OF CONTENTS

Summary.....	2
Table 1.- Construction of dwelling units in Canada and the provinces.....	4
Table 2.- Construction of dwelling units in rural and urban areas by regions.....	5
Table 3.- Construction of dwelling units in urban centres of 5,000 or more	6
Table 4.- Monthly starts by regions.....	10
Table 5.- Monthly completions by regions.....	11
Table 6.- Dwelling units completed during August, 1950, by time under construction for Canada and the provinces.....	12
Table 7.- Dwelling units completed during August, 1950, by time under construction as a percentage of total completions for Canada and regions.....	12
Table 8.- Completions by month by average time under construction.....	13
Table 9.- Completions during the first eight months of 1950 by type of dwelling for Canada and the provinces.....	14
Table 10.- Rental units completed during the first eight months of 1950 under the management of Central Mortgage and Housing Corporation	14
Appendix 1.- Definitions.....	15
Appendix 2.- Reliability of the estimates.....	15
Appendix 3.- Metropolitan areas.....	16
Appendix 4.- Index of residential rents.....	16

NEW RESIDENTIAL CONSTRUCTION

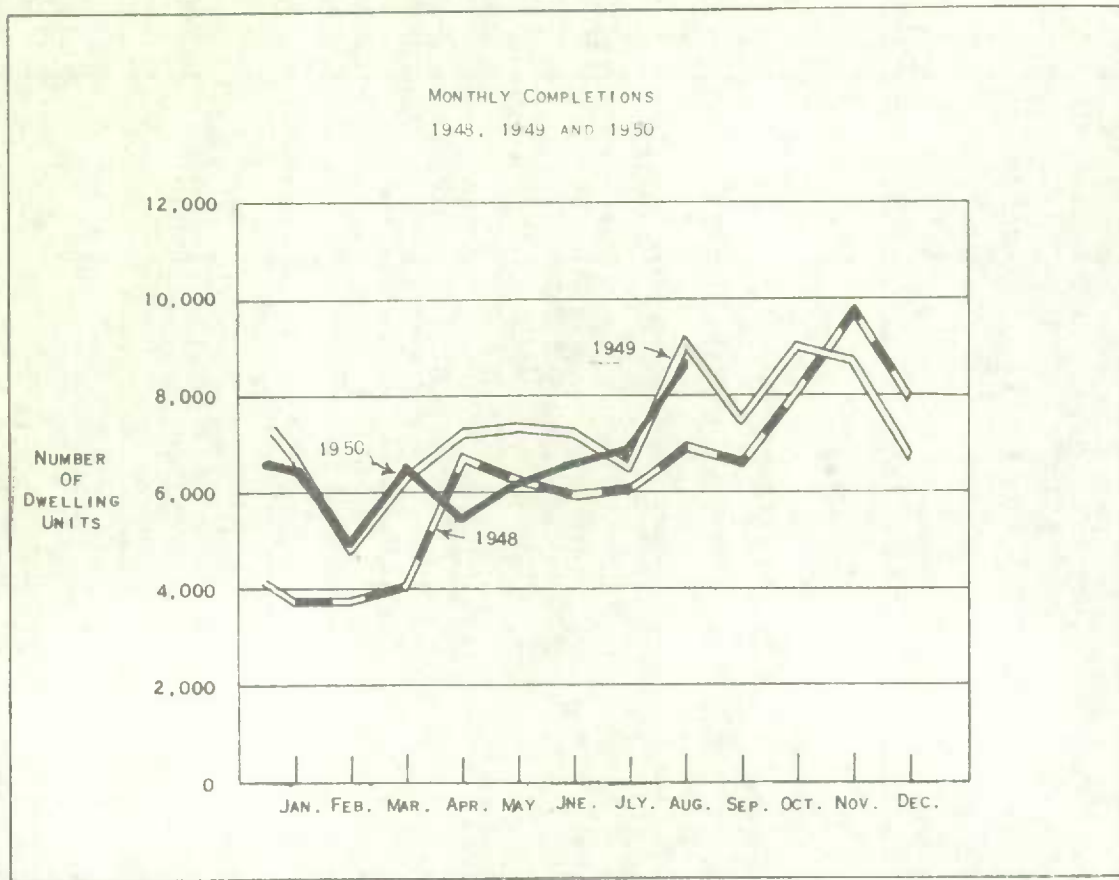
At the end of August, 1950, approximately 67,616 dwelling units were in various stages of construction compared with an estimated 58,677 at the same date last year. The number of dwelling units started during the first eight months of 1950 was still higher than the number started during the same period in 1949. At the end of this August, an estimated 61,700 new units had been started compared with 1949's estimate of 57,827 during the equivalent period.



Completions for the first eight months of this year estimated at 51,538 units were still lagging behind 1949's completion rate. In comparison, at the end of last August, 55,435 dwelling units had been completed.

To build a unit completed during August required an average of 6.6 months. Last August's completed unit had been started an average of 6.9 months prior to the date of its completion. The Maritime Provinces showed the only significant change in average time under construction. A new residential unit completed there, this month took an average of 4.3 months to build a record low for the region.

There is little or no change between the number of dwelling units built for rental purposes this year and last year at this time. The percentage remains at approximately 28 per cent.



These estimates as well as other statistics contained in this bulletin are the results of a nation-wide survey carried out each month by the Dominion Bureau of Statistics with the co-operation of the Central Mortgage and Housing Corporation. All metropolitan areas and urban centres with a population of 5,000 or more are enumerated completely. Approximately 400 sample areas lying outside these municipalities are also chosen for complete enumeration.

A column headed "Adjustments" appears in Table 1. These adjustments can arise in various ways. For example, after a start on a dwelling has been made, construction may cease, or a structure when completed may contain more or less dwelling units than were reported when construction commenced.

Table 1.- Construction of dwelling units in Canada and the provinces.

	Under construction Jan. 1	Jan. 1 to Aug. 31		Adjustments	Under construction Aug. 31
		Started	Completed		
<u>1950</u>					
Canada	59,503	61,700	51,538	- 2,049	67,616
Newfoundland	1,334	1,097	714	- 20	1,697
Prince Edward Island	292	287	275	+ 14	318
Nova Scotia	2,326	1,749	1,606	+ 9	2,478
New Brunswick	1,274	1,771	1,571	- 7	1,467
Quebec	14,984	20,444	16,548	- 792	18,088
Ontario	23,585	19,590	18,006	- 1,127	24,042
Manitoba	2,781	2,852	2,360	- 11	3,262
Saskatchewan	1,452	2,354	1,191	- 32	2,583
Alberta	4,309	6,146	4,269	- 15	6,171
British Columbia	7,166	5,410	4,998	- 68	7,510
<u>1949</u>					
Canada	56,456	57,827	55,435	- 171	58,677
Newfoundland
Prince Edward Island	203	143	206	-	140
Nova Scotia	2,748	1,634	2,052	- 1	2,329
New Brunswick	1,069	1,452	1,035	- 1	1,485
Quebec	13,848	16,236	14,929	- 79	15,076
Ontario	21,112	20,931	20,025	- 65	21,953
Manitoba	2,632	3,220	2,909	- 20	2,923
Saskatchewan	1,853	2,249	1,952	-	2,150
Alberta	5,262	5,550	5,615	- 5	5,192
British Columbia	7,729	6,412	6,712	-	7,429
<u>1948</u>					
Canada	42,215	60,465	43,571	+ 623	59,732
Newfoundland
Prince Edward Island	209	201	138	- 1	271
Nova Scotia	2,161	2,354	1,293	+ 22	3,244
New Brunswick	736	1,696	882	- 13	1,537
Quebec	9,076	16,125	11,817	- 16	13,368
Ontario	17,243	19,284	16,214	+ 167	20,480
Manitoba	2,315	3,894	2,483	- 4	3,722
Saskatchewan	1,469	2,341	1,453	+ 64	2,421
Alberta	2,310	5,843	2,469	+ 270	5,954
British Columbia	6,696	8,727	6,822	+ 134	8,735

Table 2.- Construction of dwelling units in rural and urban areas by regions

	1950			1949		
	Jan. 1 to Aug. 31		Under construction Aug. 31	Jan. 1 to Aug. 31		Under construction Aug. 31
	Started	Completed		Started	Completed	
Canada	61,700	51,538	67,616	57,827	55,435	58,677
urban	50,533	42,184	52,352	41,857	44,407	43,317
5000 or more	45,504	37,598	43,994	37,041	38,391	37,760
under 5000	5,029	4,586	8,358	4,816	6,016	5,557
rural	11,167	9,354	15,264	15,970	11,028	15,360
non-farm	8,328	7,675	11,694	11,848	8,206	11,681
farm	2,839	1,679	3,570	4,122	2,822	3,679
Newfoundland	1,097	714	1,697
urban	230	177	203
5000 or more	230	177	203
under 5000	-	-	-
rural	867	537	1,494
non-farm	785	529	1,264
farm	82	8	230
Maritime Provinces	3,807	3,452	4,263	3,229	3,293	3,954
urban	2,362	2,224	2,316	1,476	2,079	1,753
5000 or more	1,758	1,650	1,514	1,274	1,880	1,369
under 5000	604	574	802	202	199	384
rural	1,445	1,228	1,947	1,753	1,214	2,201
non-farm	1,105	867	1,227	1,226	892	1,522
farm	340	361	720	527	322	679
Quebec	20,444	16,548	18,088	16,236	14,929	15,076
urban	18,248	15,209	15,289	13,678	13,161	12,386
5000 or more	17,498	13,478	14,366	12,789	12,201	11,139
under 5000	750	1,731	923	889	960	1,247
rural	2,196	1,339	2,799	2,558	1,768	2,690
non-farm	1,831	1,096	2,401	2,084	1,476	2,262
farm	365	243	398	474	292	428
Ontario	19,590	18,006	24,042	20,931	20,025	21,953
urban	16,250	13,778	18,248	13,480	14,969	14,835
5000 or more	14,673	12,702	15,489	11,982	13,296	13,295
under 5000	1,577	1,076	2,759	1,498	1,673	1,540
rural	3,340	4,228	5,794	7,451	5,056	7,118
non-farm	2,611	3,576	4,844	6,208	4,144	5,879
farm	729	652	950	1,243	912	1,239

Table 2.- Construction of dwelling units in rural and urban areas by regions - con.

	1950			1949		
	Jan. 1 to Aug. 31		Under construction Aug. 31	Jan. 1 to Aug. 31		Under construction Aug. 31
	Started	Completed		Started	Completed	
Prairie Provinces	11,352	7,820	12,016	11,019	10,476	10,265
urban	8,603	6,634	9,452	8,199	8,664	7,884
5000 or more	6,729	5,673	6,705	6,511	6,001	6,369
under 5000	1,874	961	2,747	1,688	2,663	1,515
rural	2,749	1,186	2,564	2,820	1,812	2,381
non-farm	1,426	771	1,312	962	554	1,068
farm	1,323	415	1,252	1,858	1,258	1,313
British Columbia	5,410	4,998	7,510	6,412	6,712	7,429
urban	4,840	4,162	6,844	5,024	5,534	6,459
5000 or more	4,616	3,918	5,717	4,485	5,013	5,588
under 5000	224	244	1,127	539	521	871
rural	570	836	666	1,388	1,178	970
non-farm	570	836	646	1,368	1,140	950
farm	-	-	20	20	38	20

Table 3.- Construction of dwelling units in urban centres of 5000 or more

	1950			1949		
	Jan. 1 to Aug. 31		Under construction Aug. 31	Jan. 1 to Aug. 31		Under construction Aug. 31
	Started	Completed		Started	Completed	
Newfoundland						
Bell Island	32	19	21
Corner Brook	-	-	16
Grand Falls	37	3	34
St. John's	161	155	132
Prince Edward Island						
Charlottetown	42	19	56	29	47	35
Summerside	133	172	136	30	19	21
Nova Scotia						
Amherst	19	12	19	20	47	22
Halifax	526	447	386	347	608	268
New Glasgow	10	16	19	15	65	35
Springhill	20	17	21	21	15	21

Note - Newfoundland included only in 1950.

Table 3.- Construction of dwelling units in urban centres of 5000 or more - con.

	1950			1949		
	Jan. 1 to Aug. 31		Under construction Aug. 31	Jan. 1 to Aug. 31		Under construction Aug. 31
	Started	Completed		Started	Completed	
Nova Scotia - con.						
Stellarton	8	6	7	7	74	7
Sydney	321	272	355	177	232	318
Truro	34	22	27	35	89	23
Yarmouth	56	26	54	30	45	38
New Brunswick						
Campbellton	9	4	5	8	35	7
Edmundston	38	26	16	22	19	19
Fredericton	45	32	58	42	228	45
Moncton	389	297	308	236	142	227
Saint John	108	282	47	255	215	283
Quebec						
Asbestos	73	39	46	30	71	13
Chicoutimi	81	73	88	83	51	54
Drummondville	191	105	116	112	103	62
Grandby	181	93	138	76	48	53
Grand'Mere	90	57	51	66	52	56
Hull	231	154	174	79	117	92
Joliette	126	128	78	91	98	83
Jonquiere	71	21	65	64	56	39
Kenogami	70	37	36	13	16	10
Lachute	69	26	27	10	11	5
La Tuque	62	36	55	34	43	31
Magog	94	43	60	61	19	50
Montreal	13,656	10,321	11,594	9,640	9,727	8,598
Quebec	687	1,061	409	952	714	796
Rimouski	136	29	136	13	49	13
Riviere du Loup	17	33	17	5	14	4
Rouyn	-	32	44	-	-	36
St. Hyacinthe	116	91	80	89	73	67
St. Jean	132	132	115	158	133	134
St. Jerome	103	135	79	84	51	66
St. Joseph d'Alma	73	63	60	68	25	65
St. Joseph de Grantham	23	15	8	19	10	13
Shawinigan Falls	108	31	87	55	87	38
Sherbrooke	323	285	185	339	193	265
Sorel	19	10	16	7	14	13
Thetford Mines	83	44	58	55	36	37
Trois Rivieres	477	261	382	432	302	339
Valleyfield	137	73	109	87	35	59
Victoriaville	69	50	53	67	53	48

Table 3.- Construction of dwelling units in urban centres of 5000 or more - con.

	1950			1949		
	Jan. 1 to Aug. 31		Under construction Aug. 31	Jan. 1 to Aug. 31		Under construction Aug. 31
	Started	Completed		Started	Completed	
Ontario						
Barrie	85	119	62	94	78	93
Belleville	76	193	143	46	191	196
Brampton	28	22	39	24	18	34
Brantford	301	401	191	368	306	292
Brockville	41	50	26	54	59	42
Chatham	114	148	91	116	128	168
Cobourg	20	19	25	15	84	26
Collingwood	12	26	12	15	39	15
Cornwall	116	92	85	81	88	66
Dundas	52	22	54	12	37	3
Fort Erie	28	15	24	17	50	19
Fort Frances	21	45	21	25	31	26
Fort William	97	156	113	317	242	284
Galt	89	149	69	66	78	85
Guelph	88	92	95	105	171	113
Hamilton	1,248	852	1,380	967	1,150	1,003
Hawkesbury	18	14	15	5	13	4
Ingersoll	25	12	33	27	19	30
Kenora	-	-	26	-	-	28
Kingston	188	183	92	86	137	97
Kitchener	539	576	451	388	675	452
Leamington	23	26	22	19	28	29
Lindsay	17	22	24	36	27	36
London	1,028	972	1,006	866	796	907
Midland	20	22	12	13	15	11
Niagara Falls	59	110	84	191	252	230
North Bay	58	45	49	81	88	76
Orillia	50	40	38	38	75	32
Oshawa	190	99	198	137	148	130
Ottawa	1,772	989	1,467	481	752	518
Owen Sound	38	22	40	45	64	43
Parry Sound	17	10	14	7	-	7
Pembroke	87	59	65	56	112	46
Peterborough	220	273	203	230	291	246
Port Arthur	114	145	111	206	214	150
Port Colborne	33	17	30	22	25	19
Port Hope	24	45	30	17	46	22
Preston	33	15	27	21	23	22
Renfrew	31	13	27	15	63	12
St. Catharines	168	173	174	167	286	242
St. Thomas	20	38	31	42	105	57
Sarnia	84	60	169	254	394	338
Sault Ste. Marie	323	117	332	303	153	286
Simcoe	15	17	20	33	59	22

Table 3.- Construction of dwelling units in urban centres of 5000 or more - con.

	1950			1949		
	Jan. 1 to Aug. 31		Under construction Aug. 31	Jan. 1 to Aug. 31		Under construction Aug. 31
	Started	Completed		Started	Completed	
Ontario - con.						
Smith's Falls	53	41	25	17	22	16
Stratford	40	73	57	87	117	93
Sudbury	224	87	240	191	155	150
Thorold	23	26	22	21	96	18
Timmins	18	14	32	10	12	34
Toronto	5,382	4,837	6,866	4,576	4,166	5,314
Trenton	281	89	217	14	61	25
Welland	58	66	45	84	145	108
Whitby	36	24	29	39	21	39
Windsor	863	872	654	762	746	877
Woodstock	85	58	82	73	145	64
Manitoba						
Brandon	159	85	100	106	156	69
Portage la Prairie	17	37	42	25	3	25
Winnipeg	1,829	1,813	2,042	2,168	2,073	2,164
Saskatchewan						
Moose Jaw	38	26	66	46	109	72
North Battleford	28	22	24	15	59	15
Prince Albert	77	97	85	72	100	75
Regina	401	276	486	521	237	510
Saskatoon	317	240	308	298	160	287
Swift Current	11	18	23	54	59	97
Weyburn	8	7	8	15	52	16
Yorkton	50	12	55	63	85	82
Alberta						
Calgary	1,564	1,073	1,306	1,012	1,318	843
Edmonton	1,912	1,573	1,884	1,836	1,191	1,803
Lethbridge	228	324	179	207	238	226
Medicine Hat	90	70	97	73	161	85
British Columbia						
Kamloops	31	39	31	59	39	57
Kelowna	91	60	73	82	101	72
Nanaimo	97	122	198	233	182	228
Nelson	23	13	21	10	10	14
Prince George	22	10	25	7	1	6
Prince Rupert	15	9	17	2	-	7
Trail	51	65	29	94	204	138
Vancouver	3,675	2,895	4,366	3,273	3,775	4,125
Vernon	35	28	22	18	50	17
Victoria	576	677	935	707	651	924

Table 4.- Monthly starts by regions

	Canada	Newfound- land	Maritime Provinces	Quebec	Ontario	Prairie Provinces	British Columbia
1948 January	1,675	..	53	251	610	179	582
February	1,894	..	12	590	397	140	755
March	3,109	..	40	1,355	796	134	784
April	8,274	..	487	2,800	2,845	591	1,551
May	11,407	..	999	3,019	3,762	2,555	1,072
June	13,409	..	982	3,613	3,740	3,564	1,510
July	9,684	..	731	2,227	3,773	1,825	1,128
August	11,013	..	947	2,270	3,361	3,090	1,345
September	10,651	..	686	3,079	3,673	2,314	899
October	7,437	..	280	2,075	2,759	1,511	812
November	7,795	..	287	2,282	2,974	1,636	616
December	3,846	..	208	1,421	1,286	352	579
1949 January	3,066	..	37	624	1,248	478	679
February	1,745	..	43	535	781	127	259
March	3,585	..	128	1,386	1,255	185	631
April	8,466	..	304	2,416	3,066	1,790	890
May	12,809	..	817	3,525	4,941	2,539	987
June	10,528	..	613	3,042	3,497	2,391	985
July	9,086	..	609	2,705	3,155	1,629	988
August	8,542	..	678	2,003	2,988	1,880	993
September	10,035	..	702	2,065	4,303	1,621	1,344
October	8,964	..	552	2,182	3,883	1,667	680
November	8,434	..	340	2,157	3,455	1,817	665
December	4,249	..	200	1,556	1,451	441	601
1950 January	2,152	103	130	579	1,077	99	164
February	2,694	-	36	1,136	1,133	181	208
March	4,169	58	135	1,857	1,256	319	544
April	7,422	52	386	3,268	1,644	1,225	847
May	13,647	77	793	4,748	4,196	2,872	961
June	12,065	99	1,004	3,392	3,915	2,524	1,091
July	10,245	425	593	3,111	2,936	2,141	1,039
August	9,306	283	690	2,353	3,433	1,991	556

Note - Newfoundland included only in 1950.

Table 5.- Monthly completions by regions

	Canada	Newfound- land	Maritime Provinces	Quebec	Ontario	Prairie Provinces	British Columbia
1948 January	3,736	..	164	564	1,534	610	864
February	3,778	..	174	798	1,451	676	679
March	4,055	..	158	1,525	1,113	613	646
April	6,729	..	277	1,978	2,708	918	848
May	6,284	..	300	1,267	2,803	1,225	689
June	5,946	..	432	1,556	2,175	966	817
July	6,073	..	313	2,067	2,026	620	1,047
August	6,970	..	495	2,062	2,404	777	1,232
September	6,667	..	421	1,988	1,674	1,536	1,048
October	8,164	..	731	2,068	2,923	1,402	1,040
November	9,701	..	625	2,179	3,124	2,916	857
December	7,994	..	719	2,119	2,456	1,736	964
1949 January	6,643	..	325	1,591	2,449	932	1,346
February	4,807	..	358	1,159	1,881	717	692
March	6,388	..	477	1,866	2,066	1,248	731
April	7,251	..	413	2,174	2,329	1,851	484
May	7,374	..	201	1,990	2,880	1,386	917
June	7,275	..	539	1,988	2,454	1,559	735
July	6,588	..	414	2,007	2,352	1,011	804
August	9,109	..	566	2,154	3,614	1,772	1,003
September	7,563	..	398	1,607	2,571	2,041	946
October	9,059	..	365	2,655	3,034	2,037	968
November	8,700	..	615	2,194	3,224	1,882	785
December	6,776	..	444	1,527	2,586	1,358	861
1950 January	6,480	=	490	1,932	2,112	1,326	620
February	4,815	1	341	1,925	1,546	605	397
March	6,578	81	378	2,652	2,112	901	454
April	5,397	17	329	1,832	1,784	847	588
May	6,171	206	338	1,593	2,371	999	664
June	6,527	67	482	2,086	2,324	941	627
July	6,853	89	359	1,883	2,687	946	889
August	8,717	253	735	2,645	3,070	1,255	759

Note - Newfoundland included only in 1950.

Table 6.- Dwelling units completed during August, 1950 by time under construction for Canada and the provinces.

	Total	Months				Over 1 year	Unknown
		1-3	4-6	7-9	10-12		
Canada	8,717	2,956	2,226	1,243	1,245	1,042	5
Newfoundland	253	147	7	-	48	48	3
Prince Edward Island	9	2	-	-	7	-	-
Nova Scotia	304	109	94	32	16	53	-
New Brunswick	422	327	92	2	-	1	-
Quebec	2,645	783	901	507	99	355	-
Ontario	3,070	910	562	530	600	466	2
Manitoba	570	239	59	9	250	13	-
Saskatchewan	186	126	30	11	15	4	-
Alberta	499	143	279	29	39	9	-
British Columbia	759	170	202	123	171	93	-

Table 7.- Dwelling units completed during August, 1950 by time under construction as a percentage of total completions for Canada and regions.

	Total	Months				Over 1 year
		1-3	4-6	7-9	10-12	
Canada	%	%	%	%	%	%
Canada	100	34	26	14	14	12
Newfoundland	100	59	3	-	19	19
Maritime Provinces	100	60	25	5	3	7
Quebec	100	30	34	19	4	13
Ontario	100	30	18	17	20	15
Prairie Provinces	100	41	29	4	24	2
British Columbia	100	22	27	16	23	12

Table 8.- Completions by month by average time under construction

	Canada	Newfound- land	Maritime Provinces	Quebec	Ontario	Prairie Provinces	British Columbia
1948 average	6.5	..	6.5	5.5	6.8	6.3	7.5
1949 average	7.0	..	7.9	6.4	7.5	6.0	8.1
1948 January	7.7	..	6.0	6.8	8.7	6.7	8.1
February	6.8	..	7.5	4.5	7.1	7.2	8.2
March	7.1	..	9.5	6.0	7.4	7.6	8.0
April	7.2	..	6.8	6.6	7.2	7.9	8.0
May	7.2	..	6.1	7.1	6.7	8.1	8.1
June	6.8	..	7.6	6.2	7.1	7.5	6.6
July	6.1	..	6.4	4.5	7.4	6.9	7.0
August	6.2	..	5.5	4.6	6.8	6.3	7.7
September	5.4	..	5.4	4.2	7.0	4.9	6.3
October	6.1	..	6.1	5.1	6.6	5.1	7.7
November	6.0	..	6.7	6.1	5.7	5.5	7.8
December	6.4	..	6.7	5.8	6.5	6.1	7.5
1949 January	7.0	..	7.6	7.7	6.4	6.2	7.6
February	7.3	..	8.6	6.6	8.0	6.4	6.6
March	7.9	..	9.9	6.9	8.2	7.4	8.7
April	7.9	..	9.4	7.6	8.0	7.5	8.3
May	8.0	..	8.5	7.0	8.5	7.3	9.7
June	7.4	..	7.9	6.4	8.2	6.6	8.5
July	7.3	..	9.9	6.0	7.8	6.9	8.7
August	6.9	..	6.5	5.8	8.4	5.1	7.6
September	5.9	..	5.9	5.4	6.4	4.8	8.0
October	6.1	..	7.4	5.5	6.5	5.2	8.2
November	6.3	..	7.1	6.5	6.3	5.2	7.3
December	6.5	..	6.2	6.0	7.3	5.3	7.5
1950 January	6.8	-	8.4	5.9	7.2	6.6	7.7
February	7.2	-	7.3	6.2	7.4	8.3	9.6
March	7.0	3.0	7.5	6.4	7.2	7.1	9.6
April	7.6	2.0	7.6	7.3	8.0	7.1	8.6
May	8.5	9.4	7.9	7.8	8.6	7.2	12.2
June	7.9	7.7	9.2	5.9	8.5	7.4	11.6
July	7.1	5.3	7.6	5.4	7.9	6.9	8.1
August	6.6	6.1	4.3	6.4	7.5	5.4	8.2

Note - Newfoundland included only in 1950.

Table 9.- Completions during the first eight months of 1950
by type of dwelling for Canada and the Provinces.

	Total	One-family detached	Two-family detached	Row or terrace	Apartment or flat	Other
Canada	51,538	39,215	4,650	42	7,541	90
Newfoundland	714	714	-	-	-	-
Prince Edward Island	275	264	4	-	7	-
Nova Scotia	1,606	1,525	52	-	29	-
New Brunswick	1,571	1,368	110	4	86	3
Quebec	16,548	7,040	4,182	36	5,251	39
Ontario	18,006	16,419	80	2	1,486	19
Manitoba	2,360	2,191	30	-	139	-
Saskatchewan	1,191	1,191	-	-	-	-
Alberta	4,269	3,955	64	-	232	18
British Columbia	4,998	4,548	128	-	311	11

Table 10.- Rental units completed during the first eight months of 1950 under
the management of Central Mortgage and Housing Corporation.

	Total	One-family detached	Two-family detached	Row or terrace	Apartment or flat	Other
Canada	4,447	4,173	266	-	8	-
Newfoundland	50	50	-	-	-	-
Prince Edward Island	150	150	-	-	-	-
Nova Scotia	272	272	-	-	-	-
New Brunswick	274	274	-	-	-	-
Quebec	599	337	262	-	-	-
Ontario	1,583	1,579	4	-	-	-
Manitoba	556	556	-	-	-	-
Saskatchewan	179	179	-	-	-	-
Alberta	174	174	-	-	-	-
British Columbia	610	602	-	-	8	-

Appendix 1 : Definitions

(a) The count of dwellings which are started, completed and under construction includes only new residential construction intended for year-round occupancy. Seasonal dwellings such as summer cottages, ski shacks, etc., are not counted. Dwellings which are occupied, even if unfinished, are regarded as completed for the purposes of this survey.

(b) Types of dwelling

- (i) 1-family detached: a one-family house open on all four sides, i.e., not joined to other buildings;
- (ii) 2-family detached: a two-family house which contains only two dwelling units, either one above the other open on all four sides, or two units side by side each open on three sides, sometimes known as a semi-detached house;
- (iii) row or terrace: a one-family or two-family house in a row of three or more attached houses with common or adjacent walls;
- (iv) apartment or flat: an apartment or flat is (a) a residential structure containing three or more dwelling units, or (b) a structure used for business purposes which contains one or more dwelling units (e.g., living quarters in an office building or factory, living quarters over a store, etc.); and
- (v) other: any type of dwelling which does not fall into one of the above classifications.

(c) For the purpose of this survey, a dwelling unit is defined as a structurally separate set of living quarters having its own entrance from outside of the building, or from a common passage inside. The number of dwelling units in a structure will be the number of households the structure is intended to accommodate.

(d) For the purpose of this survey, a farm must contain at least one acre and must yield agricultural produce valued at \$50 or more per year.

Appendix 2 : Reliability of the estimates

Since the estimates in this report are partially based on a sample survey, they are subject to sampling variability. This sampling variability is not present in the data on the municipalities of 5,000 and over. When the estimates include an element derived from the sample survey, the sampling error increases as the size of the estimate decreases. Care should be taken, therefore, in interpreting the precision of some of the estimates. The estimate of unfinished dwellings for the whole of Canada should be within 5 per cent of the figures which would have been obtained from a complete count.

The estimates presented in the tables are shown to the last digit instead of being rounded, not because they are assumed to be accurate to the last digit, but rather for convenience in summation and economy in processing the tabulations.

In addition to sampling variation, all the estimates are subject to errors of enumeration. However, these should be very small as the survey for the most part can be carried on without interview with a consequent elimination of all types of respondent error. A complete count by the same enumerators would contain the same enumerative error.

Appendix 3 : Metropolitan areas

Some cities in Canada have reasonably well defined suburban areas which, for the purposes of the survey of starts and completions of dwelling units, have been included under the name of the principal city. A list of the municipalities included in these metropolitan areas is given in Housing Bulletin No. 12 pp. 17-19.

Appendix 4 : Index of residential rents

Since November, 1947, the Dominion Bureau of Statistics has been collecting data on money rents from a sample of households in conjunction with the quarterly labour force survey. The aggregate rent paid by a group of households in a given month is compared with the aggregate rent paid by the same group for the same living quarters in the next month. With a matched sample such as this, variation due to changes in the sample and to non-response are eliminated, and the index is a reliable measure of the change in rent paid for the same accommodation. Rent reported is the cash rent paid in all cases regardless of minor changes in the services provided.

Index of non-farm residential rents in Canada, by region
(October, 1947 = 100)

MONTH	Total	Maritime Provinces	Quebec	Ontario	Prairie Provinces	British Columbia
1947 July	99.7	99.4	100.0	99.4	99.5	99.9
October	100.0	100.0	100.0	100.0	100.0	100.0
1948 January	100.2	100.8	100.1	100.4	99.9	100.5
April	100.6	101.1	100.5	100.7	100.0	101.2
July	100.9	101.7	100.8	100.8	100.1	102.1
October	100.9	102.1	100.9	101.1	100.2	100.8
1949 January	101.9	102.8	101.7	102.3	101.5	102.0
February	102.0	102.9	101.7	102.4	101.6	102.1
March	102.1	103.0	101.8	102.5	101.6	102.2
April	102.3	103.1	102.0	102.7	102.1	102.3
May	102.5	103.7	102.4	102.8	102.1	102.4
June	102.9	104.0	102.7	103.2	102.7	102.7
July	103.1	104.0	102.8	103.6	103.1	102.9
August	103.3	104.4	102.9	103.8	103.4	103.1
September	103.7	104.5	103.3	104.5	103.6	103.2
October	104.1	104.7	103.6	105.0	103.9	103.2
November	104.2	104.8	103.6	105.3	104.2	103.2
December	104.5	104.4	103.9	105.7	104.6	103.3
1950 January	104.9	104.6	104.1	106.5	104.9	103.8
February	110.0	106.8	111.7	109.7	109.4	107.1
March	110.6	108.1	111.8	110.7	109.8	108.0
April	111.0	108.2	112.1	111.3	110.4(1)	108.5
May	112.1(1)	108.9	114.1	111.9	110.6(1)	108.9
June	112.4(1)	108.8	114.5	112.3	110.9(1)	108.9
July	112.8	108.8	114.7	112.9	111.0	109.2
August	113.0	108.6	114.8	113.2	111.2	109.5

(1) Revised.

STATISTICS CANADA LIBRARY
BIBLIOTHÈQUE STATISTIQUE CANADA



1010697156