

Catalogue no. 71-001-X

Labour Force Information

Friday, January 8, 2016

December 6 to 12, 2015



Statistics
Canada

Statistique
Canada

Canada

How to obtain more information

For information about this product or the wide range of services and data available from Statistics Canada, visit our website, www.statcan.gc.ca.

You can also contact us by

e-mail at STATCAN.infostats-infostats.STATCAN@canada.ca

telephone, from Monday to Friday, 8:30 a.m. to 4:30 p.m., at the following toll-free numbers:

- | | |
|---|----------------|
| • Statistical Information Service | 1-800-263-1136 |
| • National telecommunications device for the hearing impaired | 1-800-363-7629 |
| • Fax line | 1-877-287-4369 |

Depository Services Program

- | | |
|------------------|----------------|
| • Inquiries line | 1-800-635-7943 |
| • Fax line | 1-800-565-7757 |

To access this product

This product, Catalogue no. 71-001-X, is available free in electronic format. To obtain a single issue, visit our website, www.statcan.gc.ca and browse by "Key resource" > "Publications."

Standards of service to the public

Statistics Canada is committed to serving its clients in a prompt, reliable and courteous manner. To this end, this agency has developed standards of service that its employees observe. To obtain a copy of these service standards, please contact Statistics Canada toll-free at 1-800-263-1136. The service standards are also published at www.statcan.gc.ca under "About us" > "The agency" > "Providing services to Canadians."

Statistics Canada
Labour Statistics Division
Labour Force Survey Program

Labour Force Information

Friday, January 8, 2016

December 6 to 12, 2015

Published by authority of the Minister responsible for Statistics Canada

© Minister of Industry, 2016

All rights reserved. Use of this publication is governed by the Statistics Canada
Open License Agreement.

<http://www.statcan.gc.ca/reference/licence-eng.html>

January 2016

Catalogue no. 71-001-X

ISSN 1492-5478

Frequency: Monthly

Ottawa

Cette publication est également disponible en français.

Note of appreciation

Canada owes the success of its statistical system to a long-standing partnership between Statistics Canada, the citizens of Canada, its businesses, governments and other institutions. Accurate and timely statistical information could not be produced without their continued cooperation and goodwill.

User information

Symbols

The following standard symbols are used in Statistics Canada publications:

- . not available for any reference period
- .. not available for a specific reference period
- ... not applicable
- 0 true zero or a value rounded to zero
- 0s value rounded to 0 (zero) where there is a meaningful distinction between true zero and the value that was rounded
- p preliminary
- r revised
- x suppressed to meet the confidentiality requirements of the *Statistics Act*
- E use with caution
- F too unreliable to be published
- * significantly different from reference category ($p < 0.05$)

Special requests (\$)

Custom tabulations can be arranged on an ad hoc or regular basis. This service enables you to specify tables and time series to meet your own requirements. The cost varies according to the request. For more information, contact us toll-free at 1-866-873-8788 or e-mail us at statcan.labour-travail.statcan@canada.ca.

Schedule of LFS releases

Release date

January 9, 2015
February 6, 2015
March 13, 2015
April 10, 2015
May 8, 2015
June 5, 2015
July 10, 2015
August 7, 2015
September 4, 2015
October 9, 2015
November 6, 2015
December 4, 2015
January 8, 2016

Reference period

December 7 to 13, 2014
January 11 to 17, 2015
February 15 to 21, 2015
March 15 to 21, 2015
April 12 to 18, 2015
May 10 to 16, 2015
June 14 to 20, 2015
July 12 to 18, 2015
August 9 to 15, 2015
September 13 to 19, 2015
October 11 to 17, 2015
November 8 to 14, 2015
December 6 to 12, 2015

Table of contents

Highlights	5
Analysis — December 2015	6
Charts	
1. Employment indexes, Canada, seasonally adjusted	10
2. Employment, unemployment, and participation rates, Canada, seasonally adjusted	11
3. Employment indexes by industry, Canada, seasonally adjusted	12
4. Employment indexes by industry, Canada, seasonally adjusted	13
5. Employment indexes by industry, Canada, seasonally adjusted	14
6. Employment indexes by province, Canada, seasonally adjusted	15
7. Employment indexes by province, Canada, seasonally adjusted	16
8. Employment in natural resources ¹ in Alberta	17
Related products	18
Statistical tables	
1 Labour force characteristics by age and sex, Canada, seasonally adjusted	29
2 Employment by class of worker and industry, Canada, seasonally adjusted	31
3 Labour force characteristics by province, seasonally adjusted	32
4 Selected labour force characteristics (seasonally adjusted)	34
4-1 Newfoundland and Labrador	34
4-2 Prince Edward Island	35
4-3 Nova Scotia	36
4-4 New Brunswick	37
4-5 Quebec	38
4-6 Ontario	39
4-7 Manitoba	40
4-8 Saskatchewan	41
4-9 Alberta	42
4-10 British Columbia	43
5 Labour force characteristics by census metropolitan area (seasonally adjusted)	44
5-1 3 month moving average	44
5-2 Monthly	49

Table of contents – continued

6	Labour force characteristics	50
6-1	by province and economic region, unadjusted for seasonality, 3 month moving average ending in December 2014 and December 2015	50
6-2	by territory (seasonally adjusted) - 3 month moving average	55
7	Average usual hours and wages of employees by selected characteristics, Canada, unadjusted for seasonality	56
8	Regional unemployment rates used by the Employment Insurance program, seasonally adjusted, 3 month moving average	57

Data quality, concepts and methodology

Data quality	59
--------------	----

Highlights

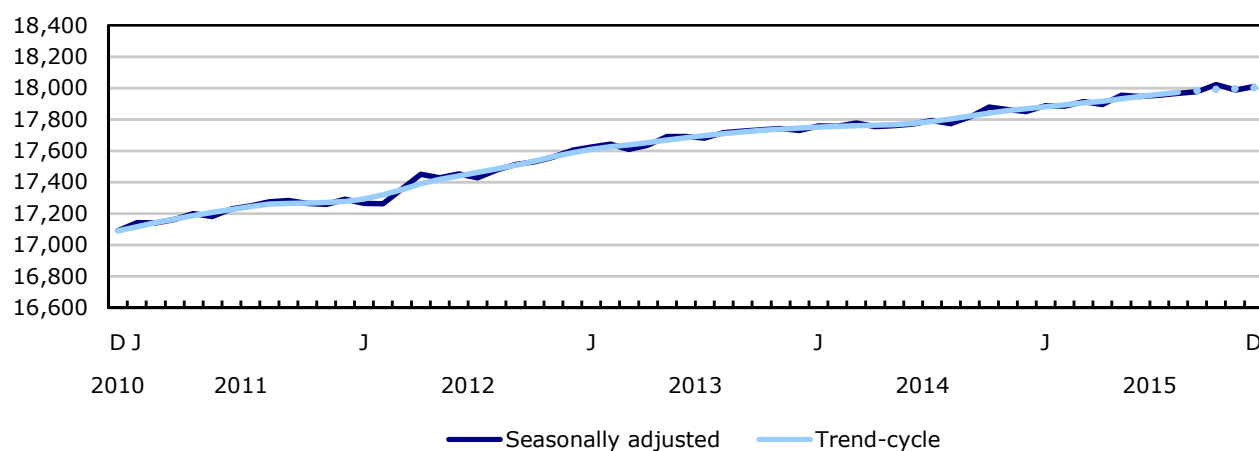
Employment edged up 23,000 (+0.1%) in December, and the unemployment rate was 7.1%, unchanged from the previous month.

Chart 1

Employment and unemployment rate, Canada, seasonally adjusted

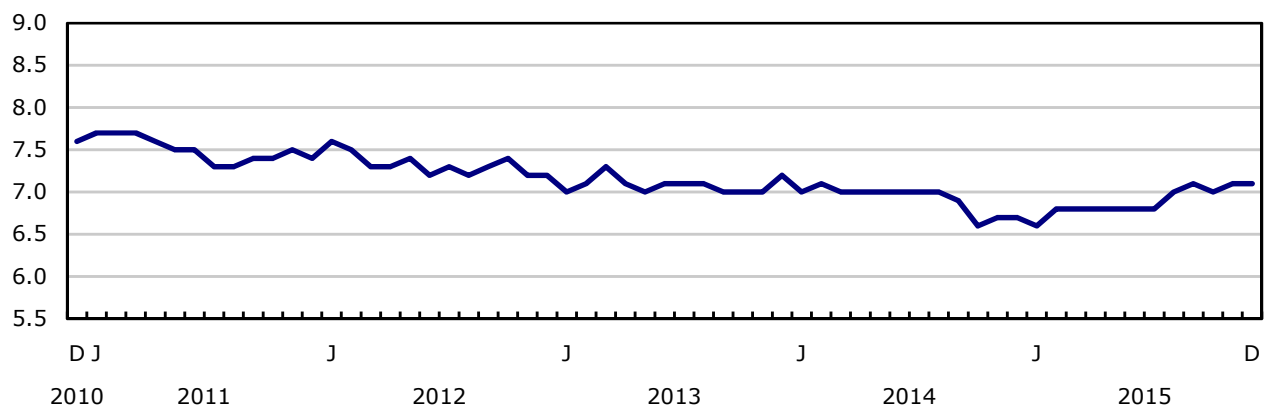
Employment

thousands



Unemployment rate

percent



Analysis — December 2015

Employment edged up 23,000 (+0.1%) in December, and the unemployment rate was 7.1%, unchanged from the previous month.

Following employment growth of 0.4% in the first quarter of 2015, the pace of growth slowed to 0.2% for each of the subsequent three quarters.

In the 12 months to December, employment gains totalled 158,000 or 0.9%, slightly above the growth rate of 0.7% in both 2013 and 2014. A year-end review for 2015 is presented in a separate section below.

In December, employment increased among people aged 55 and older and was little changed for the other demographic groups.

Provincially, employment rose only in Ontario, while it declined in Saskatchewan, Nova Scotia, Newfoundland and Labrador, as well as Prince Edward Island.

There were more people employed in health care and social assistance, educational services, and finance, insurance, real estate and leasing. At the same time, employment declined in accommodation and food services, as well as agriculture.

The number of self-employed increased in December, while there was little change among public and private sector employees.

Employment gains continue among people aged 55 and older

In December, employment rose by 29,000 among people aged 55 and older, and their unemployment rate edged down to 5.8%.

Despite little employment change among people aged 25 to 54, their unemployment rate increased 0.2 percentage points to 6.3% as more of them searched for work.

Employment was also little changed among youths aged 15 to 24 and their unemployment rate was 13.0% in December.

Employment up in Ontario

Ontario was the only province with employment growth in December, up 35,000. This lowered the unemployment rate in the province by 0.2 percentage points to 6.7%.

In December, employment in Saskatchewan was down 4,600 and the unemployment rate held steady at 5.5%, as fewer people participated in the labour market.

In Nova Scotia, there were 3,000 fewer people employed. However, the unemployment rate was unchanged at 8.6% as fewer Nova Scotians participated in the labour market.

Employment in Newfoundland and Labrador declined by 2,700. The unemployment rate increased 1.4 percentage points to 14.4%, the highest rate in the province since December 2010.

In Quebec, employment was little changed for the fifth consecutive month in December. However, the unemployment rate was up 0.3 percentage points to 7.8% as more people searched for work.

Industry perspective

In December, employment increased by 17,000 in health care and social assistance, 15,000 in educational services and 10,000 in finance, insurance, real estate and leasing.

Inversely, employment declined by 14,000 in accommodation and food services and 7,900 in agriculture.

In December, the number of self-employed increased by 40,000, while the number of private and public sector employees was little changed.

Quarterly update for the territories

The Labour Force Survey also collects labour market information about the territories. This information is produced monthly in the form of three-month moving averages.

Employment was little changed in Yukon, the Northwest Territories and Nunavut between the third and the fourth quarters of 2015.

Over this period, the unemployment rate was unchanged for both Yukon (5.3%) and Nunavut (17.2%). In the Northwest Territories, the unemployment rate increased by 1.1 percentage points to 9.9% in the fourth quarter as more people searched for work.

Year-end review, 2015

The following analysis focuses on changes from December 2014 to December 2015.

In 2015, employment gains totalled 158,000 or 0.9%, slightly above the growth rate of 0.7% over the same period in 2013 and 2014.

Full-time employment rose by 151,000 or 1.0% in 2015, while part-time work was little changed. During the same period, the number of hours worked increased by 1.0%.

In the 12 months to December, the unemployment rate increased 0.4 percentage points to 7.1%. This increase was due to a rise in the number of people searching for work (+110,000). Over the same period, the participation rate increased 0.2 percentage points to 65.9%, while the employment rate was little changed at 61.2%.

Fastest employment growth in British Columbia in 2015

Provincially, the fastest employment growth in 2015 was in British Columbia, up 2.3% (+52,000). Employment in the province has been on an upward trend since April. Despite this increase, the unemployment rate rose 1.2 percentage points to 6.7% as more people searched for work.

In Ontario, employment increased 1.2% (+81,000) in 2015, as gains in full-time work (+143,000) were partly offset by losses in part time. The unemployment rate was little changed at 6.7% as more people participated in the labour market.

Employment in Quebec also increased 1.2% (+48,000), all in full-time work and driven by gains in the first four months of the year. The unemployment rate was little changed at 7.8%, the result of more people looking for work.

In Alberta, overall employment was little changed as declines in full-time employment were offset by gains in part-time work. The number of hours worked fell by 4.3% in 2015 compared with 2014. Over the same period, the unemployment rate rose from 4.7% to 7.0%, as more people were searching for work (+58,000). The last time the unemployment rate in Alberta was above 7.0% was in April 2010.

Newfoundland and Labrador was the lone province with a decline in employment in 2015, down 1.8% (-4,300), as losses in full-time work were only partly offset by gains in part time. The unemployment rate increased 2.6 percentage points to 14.4%.

Service sector leads employment growth

In 2015, employment in professional, scientific and technical services grew by 5.2%, following little change in 2014.

There were also more people employed in health care and social assistance (+3.8%) in 2015, continuing a long-term upward trend. The bulk of the employment increase in 2015 was in hospitals.

Employment in manufacturing rose by 2.1% in 2015, the first increase since 2012. The employment gains in 2015 were spread across several manufacturing industries, and mostly in British Columbia.

Employment in natural resources fell 6.8%. Most of this decline was in Alberta (see chart 8). However, there were also smaller declines in Saskatchewan, Newfoundland and Labrador, as well as Nova Scotia. At the national level, the largest declines were in the support activities for mining and oil and gas extraction.

In accommodation and food services, employment declined by 2.3%, mostly in Alberta and British Columbia.

In 2015, self-employment rose by 92,000 (+3.4%), with increases across a number of industries in the service sector. The number of public sector employees increased by 41,000 (+1.1%), driven by gains in health care and social assistance and to a lesser extent in public administration. At the same time, the number of private sector employees was little changed.

Demographic highlights

Among the major demographic groups, only men and women aged 55 and older recorded employment growth in 2015, up 6.3% (+220,000). Over the same period, their population increased by 310,000. The participation rate for this group increased 1.2 percentage points to 37.8%, as growth in labour market participation outpaced population growth over the period. The unemployment rate for this group was little changed at 5.8%.

In the 12 months to December, employment was little changed among people aged 25 to 54, as was their population. However, their unemployment rate increased 0.8 percentage points to 6.3% as more of them searched for work.

Employment among youths aged 15 to 24 fell 1.9% (-48,000), while their population declined by 43,000. Despite the decline in employment, their unemployment rate was little changed at 13.0%, as fewer youths participated in the labour market.

Upcoming revisions

A standard revision to the Labour Force Survey (LFS) data will be released on January 26th and 27th.

Occupation data estimates will be reclassified to the 2011 National Occupational Classification from the 2006 National Occupational Classification for Statistics.

New CANSIM tables will be created for all occupation-related series and will be available from the start of each respective series. A list of the *occupation tables* is now available.

At the same time, the North American Industry Classification System (NAICS) 2012 will replace the NAICS 2007. This change will not affect the LFS CANSIM tables as there were only minor changes at the four-digit level.

In addition to updating the classification systems, the LFS seasonally adjusted estimates will be revised back to January 2013 using the latest seasonal factors. The revised estimates will be available in CANSIM on January 26.

Note to readers

The LFS estimates for December are for the week of December 6 to 12.

The LFS estimates are based on a sample and are therefore subject to sampling variability. As a result, monthly estimates will show more variability than trends observed over longer time periods. For more information, see *Interpreting Monthly Changes in Employment from the Labour Force Survey*. Estimates for smaller geographic areas or industries also have more variability. For an explanation of sampling variability of estimates and how to use standard errors to assess this variability, consult the "Data quality" section of the publication *Labour Force Information (71-001-X)*.

This analysis focuses on differences between estimates that are statistically significant at the 68% confidence level.

The **employment rate** is the number of employed persons as a percentage of the population 15 years of age and over. The rate for a particular group (for example, youths aged 15 to 24) is the number employed in that group as a percentage of the population for that group.

The **unemployment rate** is the number of unemployed as a percentage of the labour force (employed and unemployed).

The **participation rate** is the number of employed and unemployed as a percentage of the population.

For more detailed information, see the *Guide to the Labour Force Survey (71-543-G)*.

Seasonal adjustment

Unless otherwise stated, this release presents seasonally adjusted estimates, which facilitates comparisons by removing the effects of seasonal variations. For more information on seasonal adjustment, see *Seasonally adjusted data – Frequently asked questions*.

Chart 1 shows trend-cycle data on employment. These data represent a smoothed version of the seasonally adjusted time series, which provide information on longer-term movements, including changes in direction underlying the series. These data are available in CANSIM table 282-0087 for the Canada-level employment series. For more information, see the *StatCan Blog* and *Trend-cycle estimates – Frequently asked questions*.

Next release

The next release of the LFS will be on February 5.

Chart 1
Employment indexes, Canada, seasonally adjusted

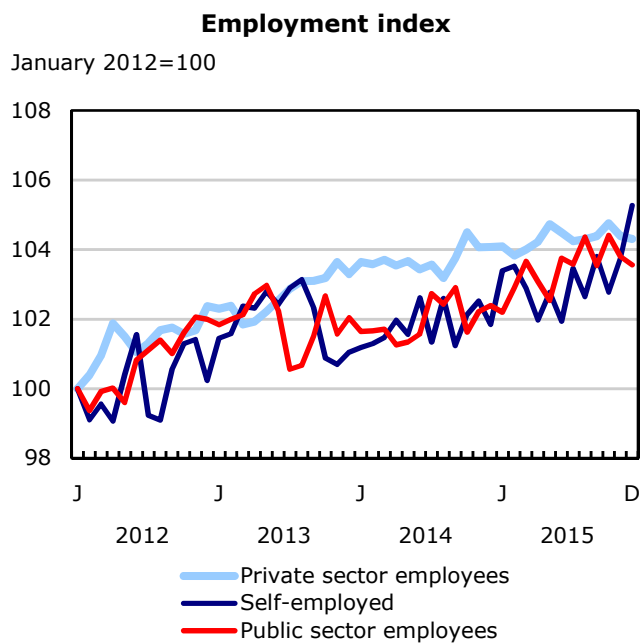
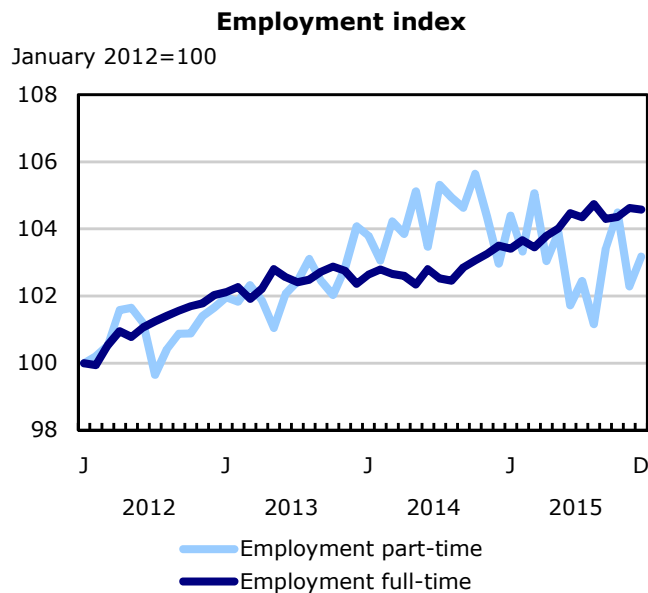
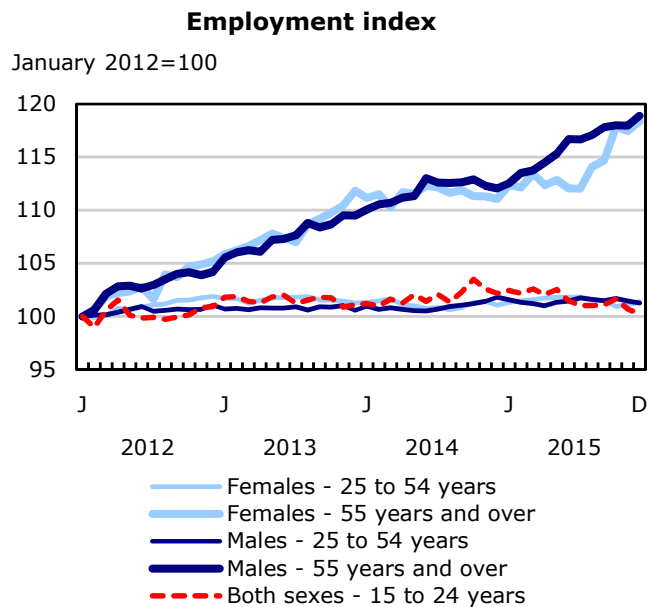


Chart 2

Employment, unemployment, and participation rates, Canada, seasonally adjusted

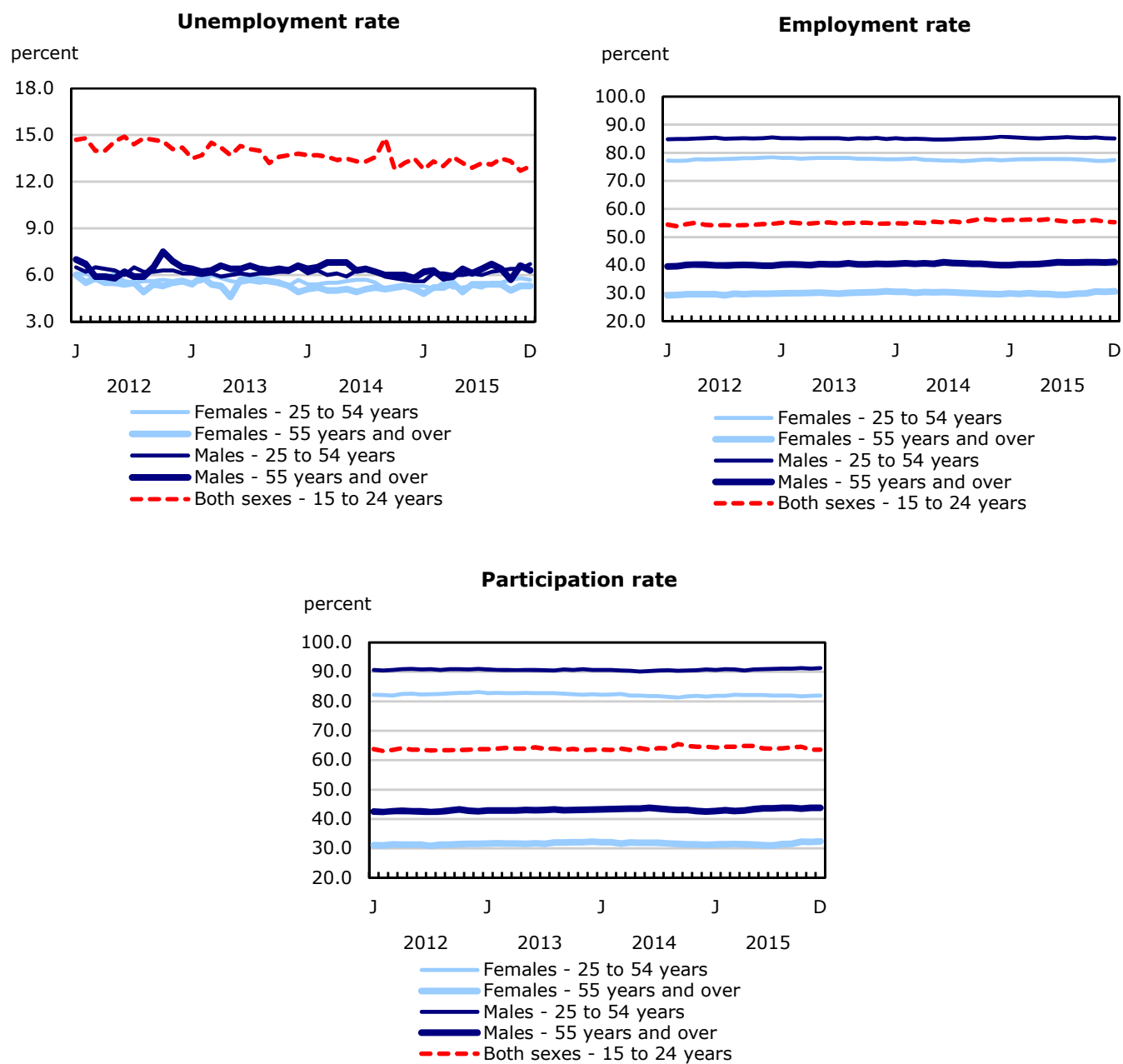
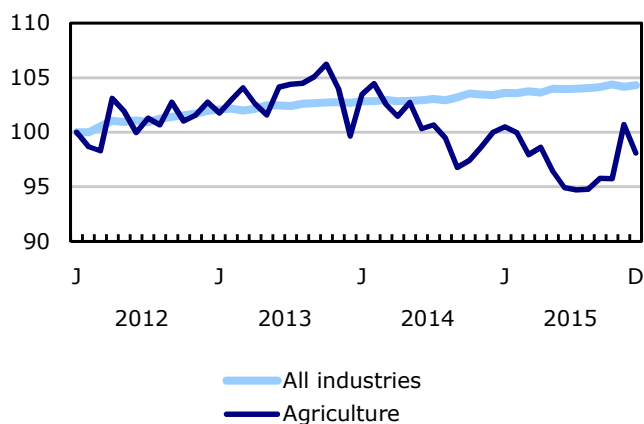
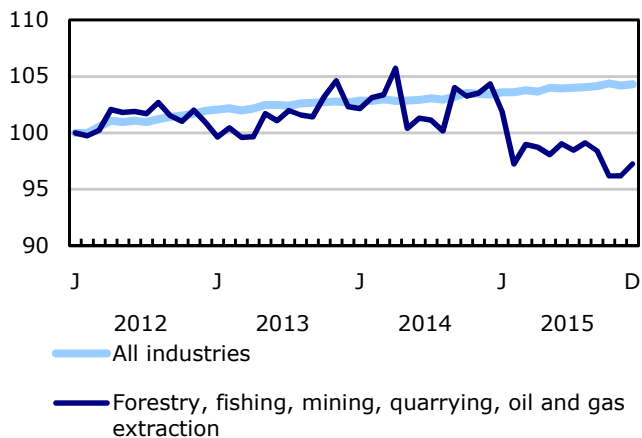


Chart 3
Employment indexes by industry, Canada, seasonally adjusted

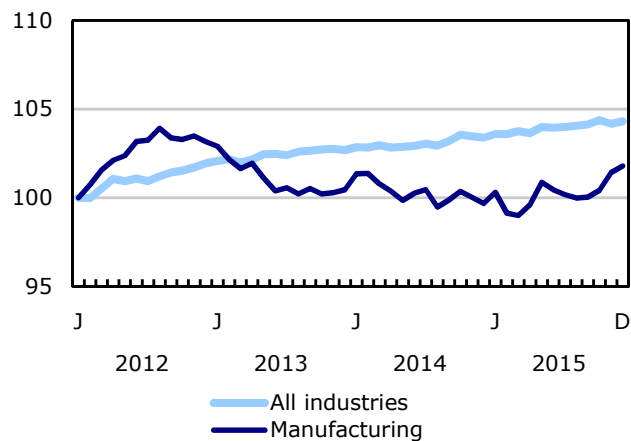
January 2012=100



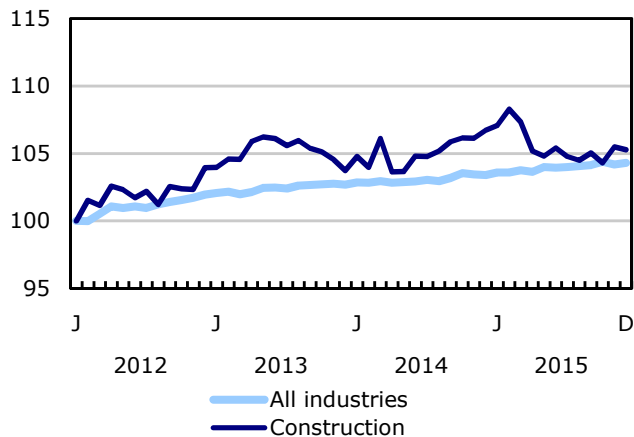
January 2012=100



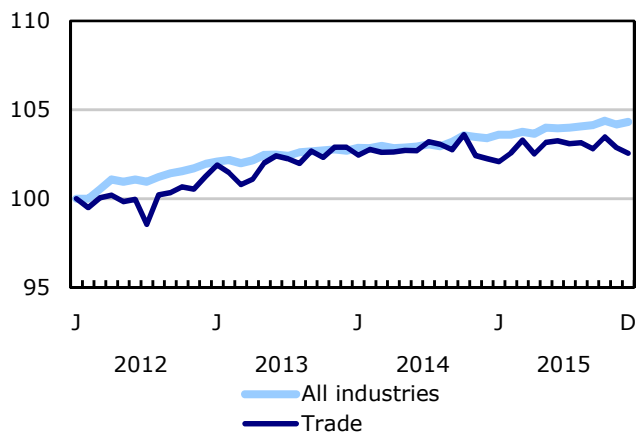
January 2012=100



January 2012=100



January 2012=100



January 2012=100

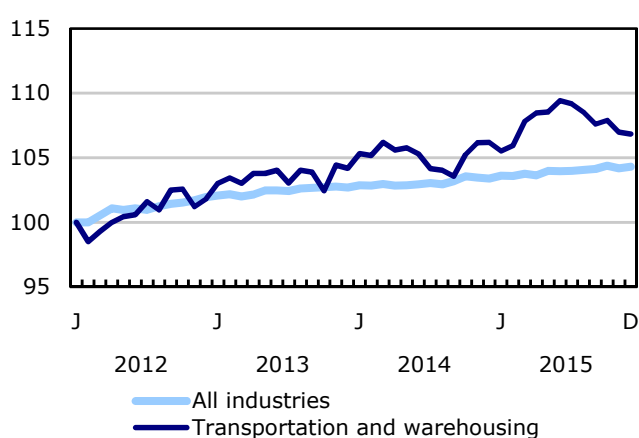


Chart 4
Employment indexes by industry, Canada, seasonally adjusted

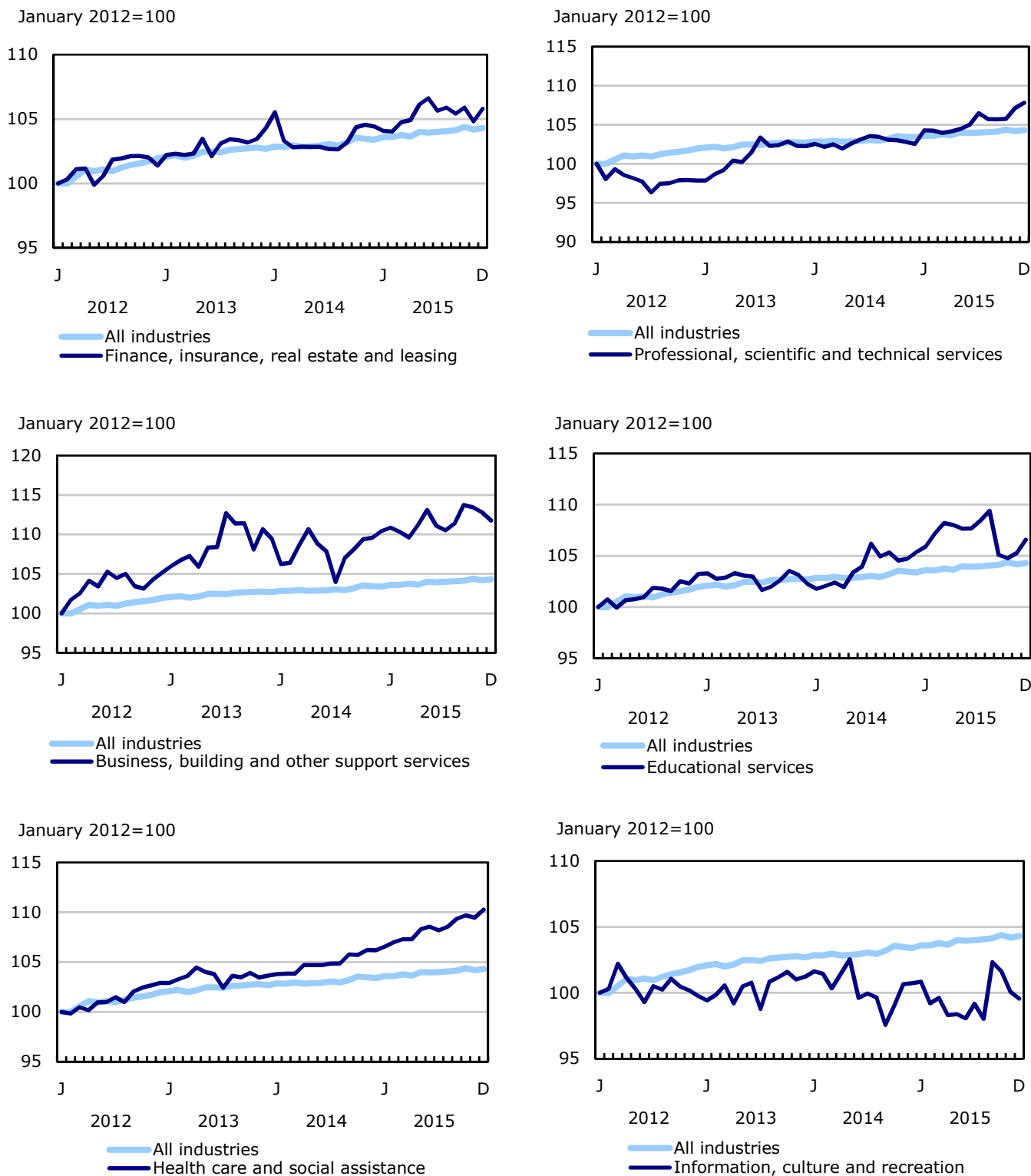


Chart 5
Employment indexes by industry, Canada, seasonally adjusted

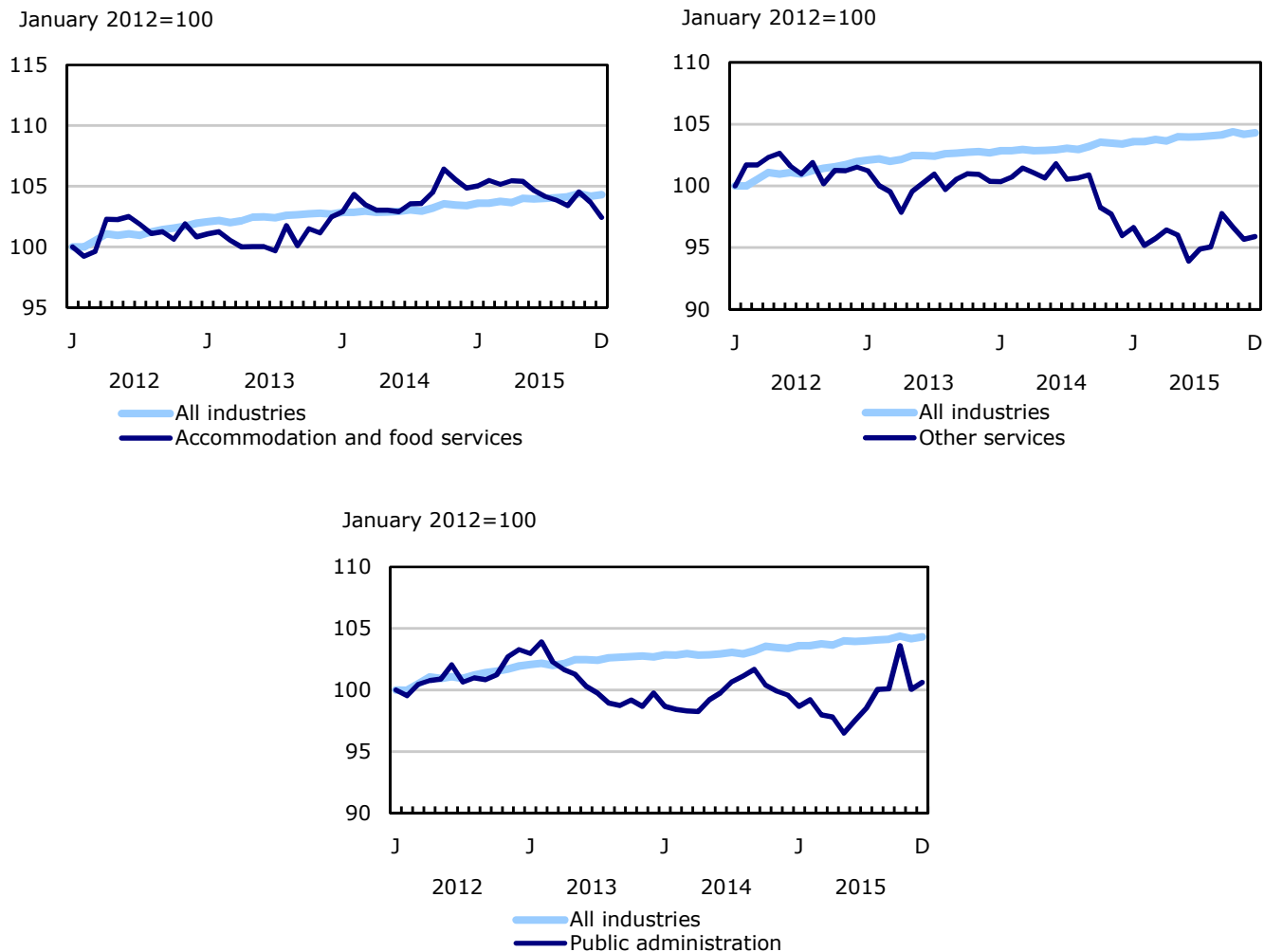


Chart 6
Employment indexes by province, Canada, seasonally adjusted

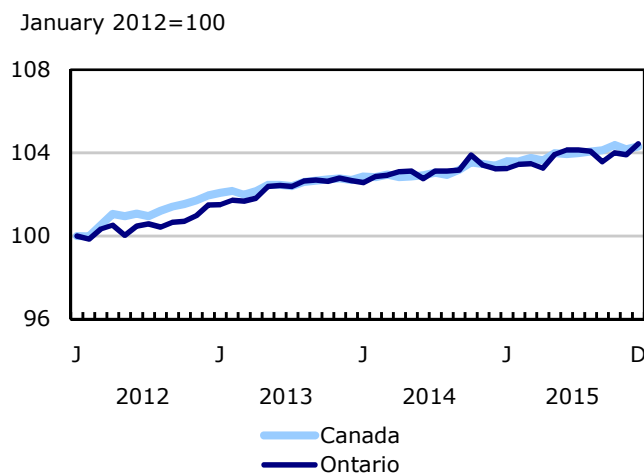
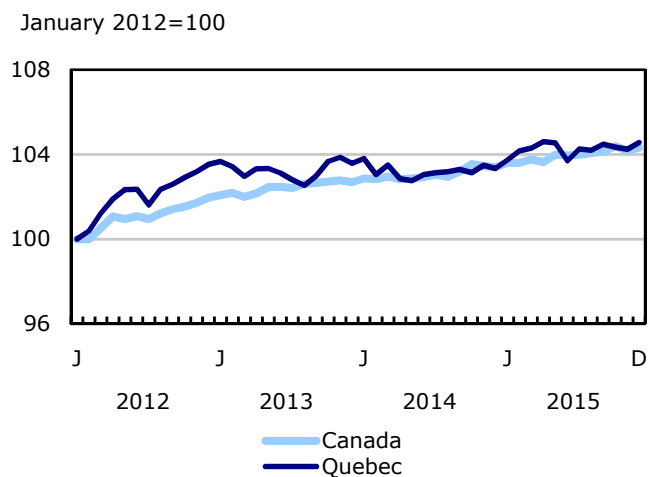
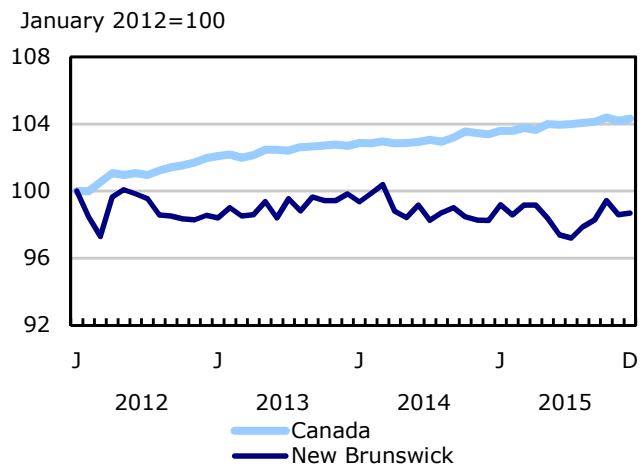
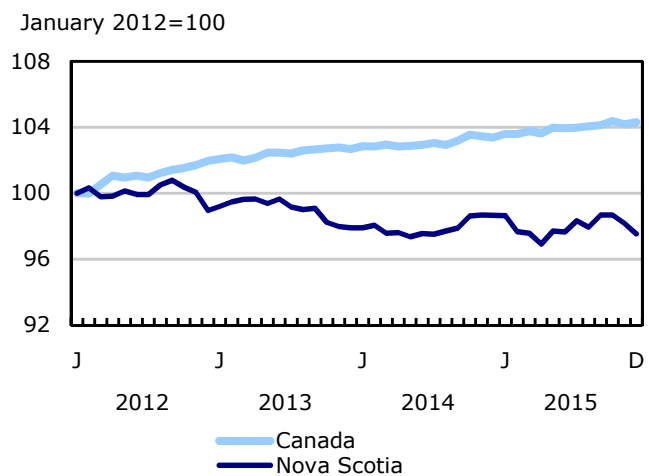
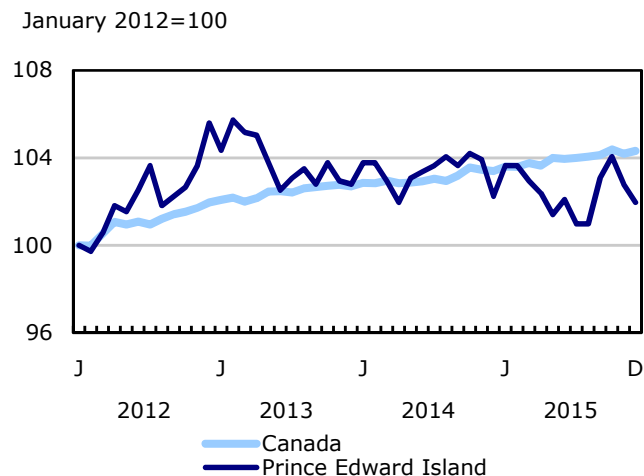
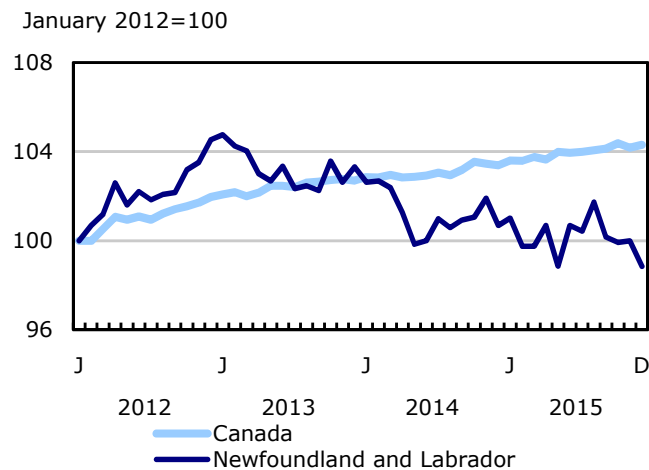


Chart 7
Employment indexes by province, Canada, seasonally adjusted

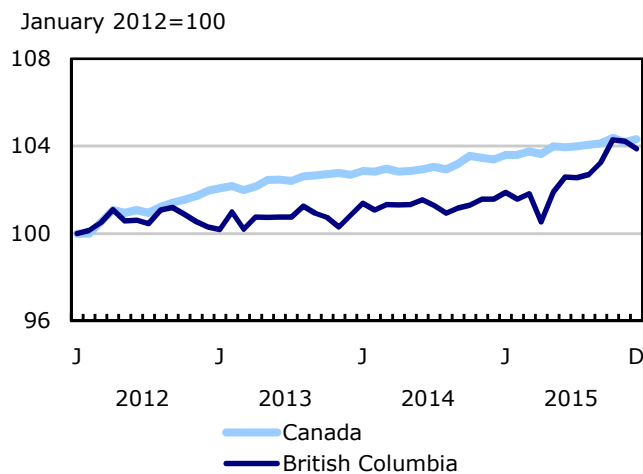
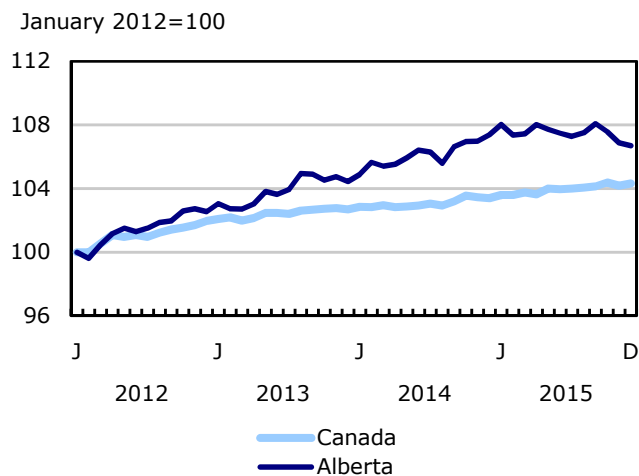
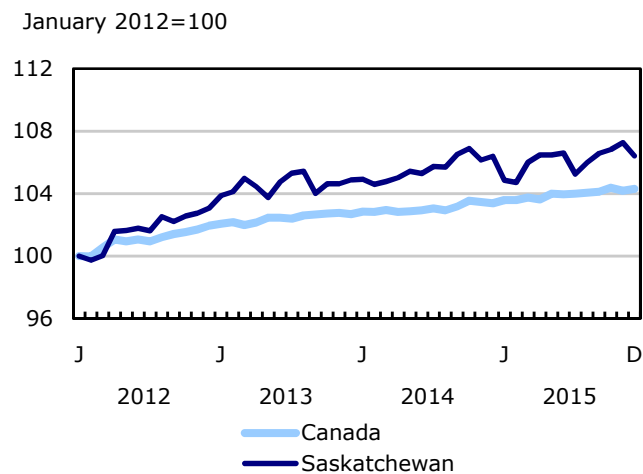
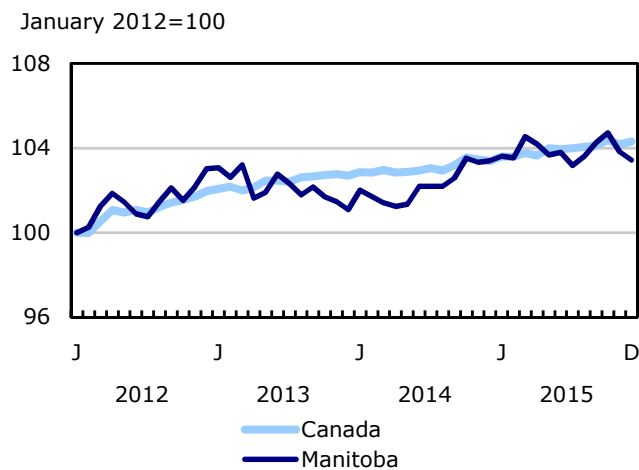
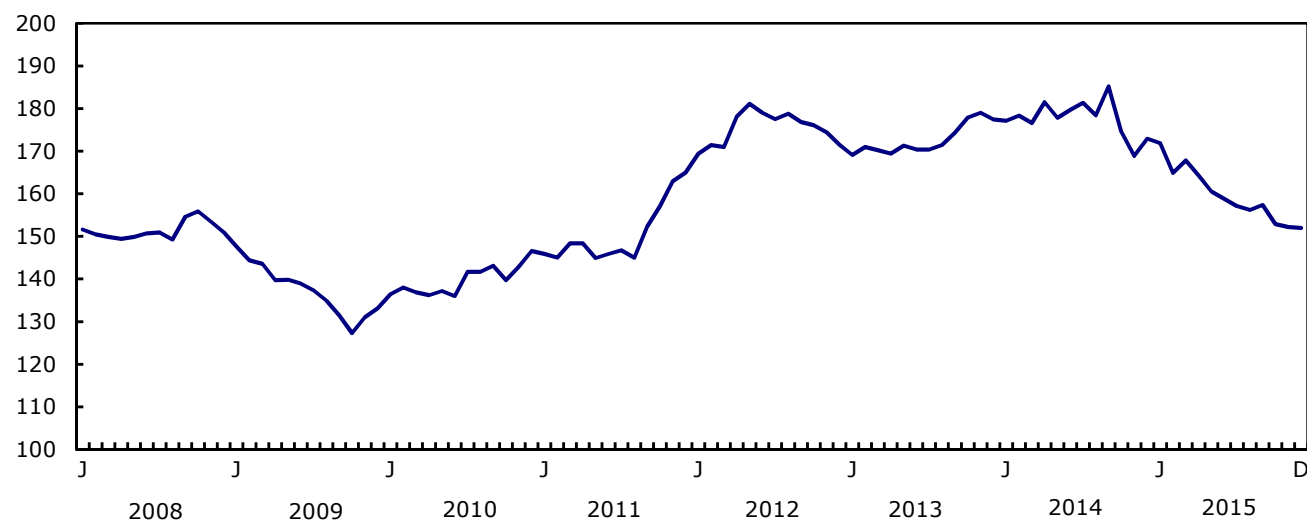


Chart 8
Employment in natural resources¹ in Alberta

thousands



1. Includes forestry, fishing, mining, quarrying, as well as oil and gas extraction.

Related products

Selected publications from Statistics Canada

71-526-X	Methodology of the Canadian Labour Force Survey
71-543-G	Guide to the Labour Force Survey
71-587-X	Aboriginal Peoples Living Off-reserve in Western Canada: Estimates from the Labour Force Survey
71-588-X	The Aboriginal Labour Force Analysis Series
71-606-X	The Immigrant Labour Force Analysis Series
71F0031X	Improvements to the Labour Force Survey (LFS)
71M0001X	Labour Force Survey Microdata File

Selected CANSIM tables from Statistics Canada

279-0029	Work absence statistics of full-time employees, for Canada, provinces and census metropolitan areas (CMA), and by sex, annual
279-0030	Work absence statistics of full-time employees, by sex and North American Industry Classification System (NAICS), Canada, annual
279-0031	Work absence statistics of full-time employees, by sex and National Occupational Classification for Statistics (NOC-S), Canada, annual
279-0032	Work absence statistics of full-time employees, by sex and age group, Canada, annual
279-0033	Work absence statistics of full-time employees, by sex and presence of children, Canada, annual
279-0034	Work absence statistics of full-time employees, by sex and job tenure, Canada, annual
279-0035	Work absence statistics of full-time employees, by sex and public and private sector, Canada, annual
279-0036	Work absence statistics of full-time employees, by sex and education, Canada, annual
279-0037	Work absence statistics of full-time employees, by sex and workplace size, Canada, annual
279-0038	Work absence statistics of full-time employees, by sex and job status, Canada, annual
279-0039	Work absence statistics of full-time employees, by sex and union coverage, Canada, annual

282-0001	Labour force survey estimates (LFS), by sex and detailed age group, unadjusted for seasonality, monthly
282-0002	Labour force survey estimates (LFS), by sex and detailed age group, annual
282-0003	Labour force survey estimates (LFS), by educational attainment, sex and age group, unadjusted for seasonality, monthly
282-0004	Labour force survey estimates (LFS), by educational attainment, sex and age group, annual
282-0005	Labour force survey estimates (LFS), by full- and part-time students during school months, sex and age group, unadjusted for seasonality, monthly
282-0006	Labour force survey estimates (LFS), by students during summer months, sex and age group, unadjusted for seasonality, monthly
282-0007	Labour force survey estimates (LFS), by North American Industry Classification System (NAICS), sex and age group, unadjusted for seasonality, monthly
282-0008	Labour force survey estimates (LFS), by North American Industry Classification System (NAICS), sex and age group, annual
282-0009	Labour force survey estimates (LFS), by National Occupational Classification for Statistics (NOC-S) and sex, unadjusted for seasonality, monthly
282-0010	Labour force survey estimates (LFS), by National Occupational Classification for Statistics (NOC-S) and sex, annual
282-0011	Labour force survey estimates (LFS), employment by class of worker, North American Industry Classification System (NAICS) and sex, unadjusted for seasonality, monthly
282-0012	Labour force survey estimates (LFS), employment by class of worker, North American Industry Classification System (NAICS) and sex, annual
282-0013	Labour force survey estimates (LFS), part-time employment by reason for part-time work, sex and age group, unadjusted for seasonality, monthly
282-0014	Labour force survey estimates (LFS), part-time employment by reason for part-time work, sex and age group, annual
282-0015	Labour force survey estimates (LFS), by usual hours worked, main or all jobs, sex and age group, unadjusted for seasonality, monthly
282-0016	Labour force survey estimates (LFS), by usual hours worked, main or all jobs, sex and age group, annual
282-0017	Labour force survey estimates (LFS), by actual hours worked, main or all jobs, sex and age group, unadjusted for seasonality, monthly
282-0018	Labour force survey estimates (LFS), by actual hours worked, main or all jobs, sex and age group, annual
282-0019	Labour force survey estimates (LFS), by usual hours worked, class of worker, North American Industry Classification System (NAICS) and sex, unadjusted for seasonality, monthly

282-0020	Labour force survey estimates (LFS), by usual hours worked, class of worker, North American Industry Classification System (NAICS) and sex, annual
282-0021	Labour force survey estimates (LFS), by actual hours worked, class of worker, North American Industry Classification System (NAICS) and sex, unadjusted for seasonality, monthly
282-0022	Labour force survey estimates (LFS), by actual hours worked, class of worker, North American Industry Classification System (NAICS) and sex, annual
282-0023	Labour force survey estimates (LFS), by usual hours worked, class of worker, National Occupational Classification for Statistics (NOC-S) and sex, unadjusted for seasonality, monthly
282-0024	Labour force survey estimates (LFS), by usual hours worked, class of worker, National Occupational Classification for Statistics (NOC-S) and sex, annual
282-0025	Labour force survey estimates (LFS), by actual hours worked, class of worker, National Occupational Classification for Statistics (NOC-S) and sex, unadjusted for seasonality, monthly
282-0026	Labour force survey estimates (LFS), by actual hours worked, class of worker, National Occupational Classification for Statistics (NOC-S) and sex, annual
282-0027	Labour force survey estimates (LFS), by total and average usual and actual hours worked, main or all jobs, type of work, sex and age group, unadjusted for seasonality, monthly
282-0028	Labour force survey estimates (LFS), by total and average usual and actual hours worked, main or all jobs, type of work, sex and age group, annual
282-0031	Labour force survey estimates (LFS), multiple jobholders by North American Industry Classification System (NAICS), sex and age group, annual
282-0032	Labour force survey estimates (LFS), multiple jobholders by North American Industry Classification System (NAICS), sex and age group, unadjusted for seasonality, monthly
282-0033	Labour force survey estimates (LFS), multiple jobholders by National Occupational Classification for Statistics (NOC-S), sex and age group, unadjusted for seasonality, monthly
282-0034	Labour force survey estimates (LFS), multiple jobholders by National Occupational Classification for Statistics (NOC-S), sex and age group, annual
282-0035	Labour force survey estimates (LFS), multiple jobholders by usual hours worked at main and all jobs, unadjusted for seasonality, monthly
282-0036	Labour force survey estimates (LFS), multiple jobholders by usual hours worked at main and all jobs, annual
282-0037	Labour force survey estimates (LFS), job tenure by type of work, sex and age group, unadjusted for seasonality, monthly
282-0038	Labour force survey estimates (LFS), job tenure by type of work, sex and age group, annual
282-0039	Labour force survey estimates (LFS), job tenure by National Occupational Classification for Statistics (NOC-S) and sex, unadjusted for seasonality, monthly
282-0040	Labour force survey estimates (LFS), job tenure by National Occupational Classification for Statistics (NOC-S) and sex, annual

282-0041	Labour force survey estimates (LFS), job tenure by North American Industry Classification System (NAICS) and sex, unadjusted for seasonality, monthly
282-0042	Labour force survey estimates (LFS), job tenure by North American Industry Classification System (NAICS) and sex, annual
282-0047	Labour force survey estimates (LFS), duration of unemployment by sex and age group, unadjusted for seasonality, monthly
282-0048	Labour force survey estimates (LFS), duration of unemployment by sex and age group, annual
282-0049	Labour force survey estimates (LFS), unemployment by type of work sought and search method, sex and age group, unadjusted for seasonality, monthly
282-0050	Labour force survey estimates (LFS), unemployment by type of work sought and search method, sex and age group, annual
282-0051	Labour force survey estimates (LFS), retirement age by class of worker and sex, annual
282-0069	Labour force survey estimates (LFS), wages of employees by type of work, National Occupational Classification for Statistics (NOC-S), sex and age group, unadjusted for seasonality, monthly
282-0070	Labour force survey estimates (LFS), wages of employees by type of work, National Occupational Classification for Statistics (NOC-S), sex and age group, annual
282-0071	Labour force survey estimates (LFS), wages of employees by type of work, North American Industry Classification System (NAICS), sex and age group, unadjusted for seasonality, monthly
282-0072	Labour force survey estimates (LFS), wages of employees by type of work, North American Industry Classification System (NAICS), sex and age group, annual
282-0073	Labour force survey estimates (LFS), wages of employees by job permanence, union coverage, sex and age group, unadjusted for seasonality, monthly
282-0074	Labour force survey estimates (LFS), wages of employees by job permanence, union coverage, sex and age group, annual
282-0075	Labour force survey estimates (LFS), employees by establishment size, North American Industry Classification System (NAICS), sex and age group, unadjusted for seasonality, monthly
282-0076	Labour force survey estimates (LFS), employees by establishment size, North American Industry Classification System (NAICS), sex and age group, annual
282-0077	Labour force survey estimates (LFS), employees by union coverage, North American Industry Classification System (NAICS), sex and age group, unadjusted for seasonality, monthly
282-0078	Labour force survey estimates (LFS), employees by union coverage, North American Industry Classification System (NAICS), sex and age group, annual
282-0079	Labour force survey estimates (LFS), employees by job permanency, North American Industry Classification System (NAICS), sex and age group, unadjusted for seasonality, monthly
282-0080	Labour force survey estimates (LFS), employees by job permanency, North American Industry Classification System (NAICS), sex and age group, annual

282-0081	Labour force survey estimates (LFS), employees working overtime (weekly) by National Occupational Classification for Statistics (NOC-S), sex and age group, unadjusted for seasonality, monthly
282-0082	Labour force survey estimates (LFS), employees working overtime (weekly) by National Occupational Classification for Statistics (NOC-S), sex and age group, annual
282-0083	Labour force survey estimates (LFS), employees working overtime (weekly) by North American Industry Classification System (NAICS), sex and age group, unadjusted for seasonality, monthly
282-0084	Labour force survey estimates (LFS), employees working overtime (weekly) by North American Industry Classification System (NAICS), sex and age group, annual
282-0085	Labour force survey estimates (LFS), supplementary unemployment rates by sex and age group, unadjusted for seasonality, monthly
282-0086	Labour force survey estimates (LFS), supplementary unemployment rates by sex and age group, annual
282-0087	Labour force survey estimates (LFS), by sex and age group, seasonally adjusted and unadjusted, monthly
282-0088	Labour force survey estimates (LFS), employment by North American Industry Classification System (NAICS), seasonally adjusted and unadjusted, monthly
282-0089	Labour force survey estimates (LFS), employment by class of worker and sex, seasonally adjusted and unadjusted, monthly
282-0092	Labour force survey estimates (LFS), actual hours worked at main job by North American Industry Classification System (NAICS), seasonally adjusted, monthly
282-0093	Labour force survey estimates (LFS), employment by National Occupational Classification for Statistics (NOC-S), seasonally adjusted, monthly
282-0094	Labour force survey estimates (LFS), by North American Industry Classification System (NAICS), Canada, seasonally adjusted, monthly
282-0095	Labour force survey estimates (LFS), by full- and part-time students during school months, sex and age group, annual
282-0100	Labour force survey estimates (LFS), by territories, sex and age group, 3-month moving average, seasonally adjusted and unadjusted, monthly
282-0101	Labour force survey estimates (LFS), by immigrant status, age group, Canada, regions, provinces and Montreal, Toronto, Vancouver census metropolitan areas, 3-month moving average, unadjusted for seasonality, monthly
282-0102	Labour force survey estimates (LFS), by immigrant status, age group, Canada, regions, provinces and Montreal, Toronto, Vancouver census metropolitan areas, annual
282-0103	Labour force survey estimates (LFS), by immigrant status, sex and detailed age group, Canada, 3-month moving average, unadjusted for seasonality, monthly
282-0104	Labour force survey estimates (LFS), by immigrant status, sex and detailed age group, Canada, annual

282-0105	Labour force survey estimates (LFS), by immigrant status, educational attainment, sex and age group, Canada, 3-month moving average, unadjusted for seasonality, monthly
282-0106	Labour force survey estimates (LFS), by immigrant status, educational attainment, sex and age group, Canada, annual
282-0107	Labour force survey estimates (LFS), by immigrant status, country of birth, sex and age group, Canada, 3-month moving average, unadjusted for seasonality, monthly
282-0108	Labour force survey estimates (LFS), by immigrant status, country of birth, sex and age group, Canada, annual
282-0122	Labour force survey estimates (LFS), by provinces and economic regions based on 2011 Census boundaries, 3-month moving average, unadjusted for seasonality, monthly
282-0123	Labour force survey estimates (LFS), by provinces, territories and economic regions based on 2011 Census boundaries, annual
282-0124	Labour force survey estimates (LFS), employment by economic region based on 2011 Census boundaries and North American Industry Classification System (NAICS), 3-month moving average, unadjusted for seasonality, monthly
282-0125	Labour force survey estimates (LFS), employment by economic region based on 2011 Census boundaries and North American Industry Classification System (NAICS), annual
282-0126	Labour force survey estimates (LFS), employment by economic region based on 2011 Census boundaries and National Occupational Classification for Statistics (NOC-S), 3-month moving average, unadjusted for seasonality, monthly
282-0127	Labour force survey estimates (LFS), employment by economic region based on 2011 Census boundaries and National Occupational Classification for Statistics (NOC-S), annual
282-0128	Labour force survey estimates (LFS), by census metropolitan area based on 2011 Census boundaries, sex and age group, 3-month moving average, unadjusted for seasonality, monthly
282-0129	Labour force survey estimates (LFS), by census metropolitan area based on 2011 Census boundaries, sex and age group, annual
282-0130	Labour force survey estimates (LFS), employment by census metropolitan area based on 2011 Census boundaries and North American Industry Classification System (NAICS), 3-month moving average, unadjusted for seasonality, monthly
282-0131	Labour force survey estimates (LFS), employment by census metropolitan area based on 2011 Census boundaries and North American Industry Classification System (NAICS), annual
282-0132	Labour force survey estimates (LFS), employment by census metropolitan area based on 2011 Census boundaries and National Occupational Classification for Statistics (NOC-S), 3-month moving average, unadjusted for seasonality, monthly
282-0133	Labour force survey estimates (LFS), employment by census metropolitan area based on 2011 Census boundaries and National Occupational Classification for Statistics (NOC-S), annual

282-0134	Labour force survey estimates (LFS), by selected census agglomerations based on 2011 Census boundaries, annual
282-0135	Labour force survey estimates (LFS), by census metropolitan area based on 2011 Census boundaries, 3-month moving average, seasonally adjusted and unadjusted, monthly
282-0136	Labour force survey estimates (LFS), by Montréal, Toronto and Vancouver census metropolitan areas based on 2011 Census boundaries, seasonally adjusted and unadjusted, monthly
282-0137	Labour force survey estimates (LFS), by population centres and rural areas based on 2011 Census boundaries, sex and age group, unadjusted for seasonality, monthly
282-0138	Labour force survey estimates (LFS), by population centres and rural areas based on 2011 Census boundaries, sex and age group, annual
282-0139	Labour force survey estimates (LFS), employment by population centres and rural areas based on 2011 Census boundaries, class of worker and North American Industry Classification System (NAICS), unadjusted for seasonality, monthly
282-0140	Labour force survey estimates (LFS), employment by population centres and rural areas based on 2011 Census boundaries, class of worker and North American Industry Classification System (NAICS), annual
282-0200	Labour force survey estimates (LFS), weekly wage distributions of employees by type of work, North American Industry Classification System (NAICS), and sex, unadjusted for seasonality, monthly
282-0201	Labour force survey estimates (LFS), weekly wage distributions of employees by type of work, North American Industry Classification System (NAICS), and sex, annual
282-0202	Labour force survey estimates (LFS), weekly wage distributions of employees by type of work, National Occupational Classification for Statistics (NOC-S), and sex, unadjusted for seasonality, monthly
282-0203	Labour force survey estimates (LFS), weekly wage distributions of employees by type of work, National Occupational Classification for Statistics (NOC-S), and sex, annual
282-0204	Labour force survey estimates (LFS), hourly wage distributions of employees by type of work, North American Industry Classification System (NAICS), and sex, unadjusted for seasonality, monthly
282-0205	Labour force survey estimates (LFS), hourly wage distributions of employees by type of work, North American Industry Classification System (NAICS), and sex, annual
282-0206	Labour force survey estimates (LFS), hourly wage distribution of employees by type of work, National Occupational Classification for Statistics (NOC-S), and sex, unadjusted for seasonality, monthly
282-0207	Labour force survey estimates (LFS), hourly wage distribution of employees by type of work, National Occupational Classification for Statistics (NOC-S), and sex, annual
282-0208	Labour force survey estimates (LFS), by educational degree, sex and age group, unadjusted for seasonality, monthly
282-0209	Labour force survey estimates (LFS), by educational degree, sex and age group, annual

282-0210	Labour force survey estimates (LFS), by family type and family age composition, unadjusted for seasonality, monthly
282-0211	Labour force survey estimates (LFS), by family type and family age composition, annual
282-0212	Labour force survey estimates (LFS), hours lost by employees by reason absent full and part week and sex, unadjusted for seasonality, monthly
282-0213	Labour force survey estimates (LFS), hours lost by employees by reason absent full and part week and sex, annual
282-0214	Labour force survey estimates (LFS), activity prior to unemployment by sex and age group, unadjusted for seasonality, monthly
282-0215	Labour force survey estimates (LFS), activity prior to unemployment, by sex and age group, annual
282-0216	Labour force survey estimates (LFS), reason for leaving job during previous year by sex and age group, unadjusted for seasonality, monthly
282-0217	Labour force survey estimates (LFS), reason for leaving job during previous year by sex and age group, annual
282-0218	Labour force survey estimates (LFS), reason for not looking for work, by sex and age group, unadjusted for seasonality, monthly
282-0219	Labour force survey estimates (LFS), reason for not looking for work, by sex and age group, annual
282-0220	Labour Force Survey estimates (LFS), employees by union status, sex and age group, Canada and provinces, annual
282-0221	Labour Force Survey estimates (LFS), employees by union status, sex, age group and education level, Canada, annual
282-0222	Labour Force Survey estimates (LFS), employees by union status and National Occupational Classification (NOC-S), Canada, annual
282-0223	Labour Force Survey estimates (LFS), employees by union status, North American Industry Classification System (NAICS) and sex, Canada, annual
282-0224	Labour Force Survey estimates (LFS), employees by union status, establishment size, job tenure, type of work and job permanency, Canada, annual
282-0225	Labour Force Survey estimates (LFS), average weekly earnings, average hourly wage rate and average usual weekly hours by union status and type of work, Canada and provinces, annual
282-0226	Labour force survey estimates (LFS), by Aboriginal group, sex and age group, Canada, selected provinces and regions, annual (Persons), 2007 to 2014
282-0227	Labour force survey estimates (LFS), by detailed Aboriginal group, sex and age group, Canada and selected regions, annual (Persons), 2007 to 2014
282-0228	Labour force survey estimates (LFS), by Aboriginal group, educational attainment and age group, Canada and selected regions, annual (Persons), 2007 to 2014

282-0229	Labour force survey estimates (LFS), employment by Aboriginal group, North American Industry Classification System (NAICS), sex and age group, annual (Persons), 2007 to 2014
282-0230	Labour force survey estimates (LFS), employment by Aboriginal group, North American Industry Classification System (NAICS) and age group, Canada and selected regions, annual (Persons), 2007 to 2014
282-0231	Labour force survey estimates (LFS), employment by Aboriginal group, National Occupational Classification for Statistics (NOC-S), sex and age group, annual (Persons), 2007 to 2014
282-0232	Labour force survey estimates (LFS), employment by Aboriginal group, National Occupational Classification for Statistics (NOC-S) and age group, Canada, selected provinces and regions, annual (Persons), 2007 to 2014
282-0233	Labour force survey estimates (LFS), average hourly and weekly wages and average usual weekly hours by Aboriginal group and age group, Canada, selected provinces and regions, annual (Number), 2007 to 2014

Selected surveys from Statistics Canada

3701	Labour Force Survey
------	---------------------

Selected summary tables from Statistics Canada

- *Average hourly wages of employees by selected characteristics and occupation, unadjusted data, by province (monthly)*
- *Days lost per worker by industry and sex*
- *People employed, by educational attainment*
- *Reasons for part-time work by sex and age group*
- *Self-employment, historical summary*
- *Employment by age, sex, type of work, class of worker and province (monthly)*
- *Actual hours worked per week by industry, seasonally adjusted (monthly)*
- *Labour force characteristics, unadjusted, by territory (3 month moving average)*
- *Employment by industry and sex*
- *Full-time and part-time employment by sex and age group*
- *Labour force characteristics by age and sex*
- *Labour force characteristics by immigrant status of population aged 25 to 54, and by educational attainment*

- *Labour force characteristics by immigrant status, by detailed age group*
- *Labour force characteristics by immigrant status of population aged 25 to 54, by country of birth*
- *Days lost per worker due to illness or disability, by sex, by province*
- *Employment by industry*
- *Labour force characteristics, seasonally adjusted, by province (monthly)*
- *Labour force characteristics, unadjusted, by province (monthly)*
- *Labour force, employment and unemployment, levels and rates, by province*
- *Economic indicators, by province and territory (monthly and quarterly)*
- *Days lost per worker by reason, by provinces*
- *Labour force characteristics, seasonally adjusted, by census metropolitan area (3 month moving average)*
- *Labour force characteristics, unadjusted, by economic region (3 month moving average)*
- *Distribution of employed people, by industry, by province*
- *Employment by major industry group, seasonally adjusted, by province (monthly)*
- *Labour force characteristics*
- *Labour force characteristics, unadjusted, by census metropolitan area (3 month moving average)*
- *Labour force characteristics, population 15 years and older, by census metropolitan area*
- *Labour force characteristics, population 15 years and older, by economic region, by province*
- *Canada: Economic and financial data*
- *Labour force characteristics by sex and age group*
- *Labour force characteristics by immigrant status of population aged 25 to 54, by province*
- *Latest statistics (monthly)*

Statistical tables

Table 1
Labour force characteristics by age and sex, Canada, seasonally adjusted

	November 2015	December 2015	S.E. ¹	Change from			Percent change from		
				last month	last December	twelve months ago	last month	last December	twelve months ago
in thousands (except rates)									
15 years and over, both sexes									
Population	29,401.2	29,419.0	...	17.8	302.4	302.4	0.1	1.0	1.0
Labour force	19,351.7	19,396.0	29.2	44.3	268.3	268.3	0.2	1.4	1.4
Employment	17,986.8	18,009.6	29.1	22.8	158.1	158.1	0.1	0.9	0.9
Employment full-time	14,623.4	14,617.0	41.8	-6.4	151.0	151.0	0.0	1.0	1.0
Employment part-time	3,363.4	3,392.6	38.4	29.2	7.1	7.1	0.9	0.2	0.2
Unemployment	1,364.8	1,386.4	24.9	21.6	110.2	110.2	1.6	8.6	8.6
Participation rate	65.8	65.9	0.1	0.1	0.2	0.2
Unemployment rate	7.1	7.1	0.1	0.0	0.4	0.4
Employment rate	61.2	61.2	0.1	0.0	-0.1	-0.1
Part-time rate	18.7	18.8	0.2	0.1	-0.1	-0.1
15 to 24 years, both sexes									
Population	4,416.6	4,412.0	...	-4.6	-43.0	-43.0	-0.1	-1.0	-1.0
Labour force	2,810.5	2,807.1	17.1	-3.4	-68.7	-68.7	-0.1	-2.4	-2.4
Employment	2,452.9	2,441.2	16.0	-11.7	-47.7	-47.7	-0.5	-1.9	-1.9
Employment full-time	1,295.2	1,288.1	19.8	-7.1	-1.4	-1.4	-0.5	-0.1	-0.1
Employment part-time	1,157.6	1,153.2	20.9	-4.4	-46.1	-46.1	-0.4	-3.8	-3.8
Unemployment	357.6	365.8	14.8	8.2	-21.2	-21.2	2.3	-5.5	-5.5
Participation rate	63.6	63.6	0.4	0.0	-1.0	-1.0
Unemployment rate	12.7	13.0	0.5	0.3	-0.5	-0.5
Employment rate	55.5	55.3	0.4	-0.2	-0.6	-0.6
Part-time rate	47.2	47.2	0.8	0.0	-0.9	-0.9
25 years and over, men									
Population	12,221.8	12,232.6	...	10.8	171.0	171.0	0.1	1.4	1.4
Labour force	8,790.6	8,812.4	15.8	21.8	180.7	180.7	0.2	2.1	2.1
Employment	8,223.0	8,228.2	16.9	5.2	84.7	84.7	0.1	1.0	1.0
Employment full-time	7,567.9	7,577.0	23.1	9.1	74.8	74.8	0.1	1.0	1.0
Employment part-time	655.1	651.2	18.9	-3.9	9.9	9.9	-0.6	1.5	1.5
Unemployment	567.6	584.2	14.8	16.6	96.0	96.0	2.9	19.7	19.7
Participation rate	71.9	72.0	0.1	0.1	0.4	0.4
Unemployment rate	6.5	6.6	0.2	0.1	0.9	0.9
Employment rate	67.3	67.3	0.1	0.0	-0.2	-0.2
Part-time rate	8.0	7.9	0.2	-0.1	0.0	0.0
25 years and over, women									
Population	12,762.7	12,774.4	...	11.7	174.5	174.5	0.1	1.4	1.4
Labour force	7,750.6	7,776.6	16.4	26.0	156.4	156.4	0.3	2.1	2.1
Employment	7,311.0	7,340.2	16.4	29.2	121.0	121.0	0.4	1.7	1.7
Employment full-time	5,760.3	5,752.0	27.4	-8.3	77.8	77.8	-0.1	1.4	1.4
Employment part-time	1,550.7	1,588.2	25.9	37.5	43.3	43.3	2.4	2.8	2.8
Unemployment	439.6	436.4	13.1	-3.2	35.4	35.4	-0.7	8.8	8.8
Participation rate	60.7	60.9	0.1	0.2	0.4	0.4
Unemployment rate	5.7	5.6	0.2	-0.1	0.3	0.3
Employment rate	57.3	57.5	0.1	0.2	0.2	0.2
Part-time rate	21.2	21.6	0.3	0.4	0.2	0.2
25 to 54 years, both sexes									
Population	14,605.3	14,604.7	...	-0.6	35.3	35.3	0.0	0.2	0.2
Labour force	12,626.7	12,652.7	23.8	26.0	90.8	90.8	0.2	0.7	0.7
Employment	11,856.2	11,861.8	25.7	5.6	-14.5	-14.5	0.0	-0.1	-0.1
Unemployment	770.5	790.9	18.5	20.4	105.3	105.3	2.6	15.4	15.4
Participation rate	86.5	86.6	0.2	0.1	0.4	0.4
Unemployment rate	6.1	6.3	0.1	0.2	0.8	0.8
Employment rate	81.2	81.2	0.2	0.0	-0.3	-0.3
25 to 54 years, men									
Population	7,273.2	7,272.5	...	-0.7	16.1	16.1	0.0	0.2	0.2
Labour force	6,624.5	6,637.6	15.5	13.1	46.2	46.2	0.2	0.7	0.7
Employment	6,200.4	6,189.8	17.3	-10.6	-32.4	-32.4	-0.2	-0.5	-0.5
Unemployment	424.2	447.8	13.6	23.6	78.6	78.6	5.6	21.3	21.3
Participation rate	91.1	91.3	0.2	0.2	0.5	0.5
Unemployment rate	6.4	6.7	0.2	0.3	1.1	1.1
Employment rate	85.2	85.1	0.2	-0.1	-0.6	-0.6

See notes at the end of the table.

Table 1 – continued

Labour force characteristics by age and sex, Canada, seasonally adjusted

	November 2015	December 2015	S.E. ¹	Change from			Percent change from		
				last month	last December	twelve months ago	last month	last December	twelve months ago
in thousands (except rates)									
25 to 54 years, women									
Population	7,332.1	7,332.2	...	0.1	19.2	19.2	0.0	0.3	0.3
Labour force	6,002.2	6,015.1	17.2	12.9	44.6	44.6	0.2	0.7	0.7
Employment	5,655.8	5,672.1	17.8	16.3	18.0	18.0	0.3	0.3	0.3
Unemployment	346.3	343.0	12.3	-3.3	26.6	26.6	-1.0	8.4	8.4
Participation rate	81.9	82.0	0.2	0.1	0.4	0.4
Unemployment rate	5.8	5.7	0.2	-0.1	0.4	0.4
Employment rate	77.1	77.4	0.2	0.3	0.1	0.1
55 years and over, both sexes									
Population	10,379.3	10,402.3	...	23.0	310.2	310.2	0.2	3.1	3.1
Labour force	3,914.5	3,936.3	20.3	21.8	246.3	246.3	0.6	6.7	6.7
Employment	3,677.8	3,706.6	20.4	28.8	220.2	220.2	0.8	6.3	6.3
Unemployment	236.7	229.8	10.1	-6.9	26.2	26.2	-2.9	12.9	12.9
Participation rate	37.7	37.8	0.2	0.1	1.2	1.2
Unemployment rate	6.0	5.8	0.3	-0.2	0.3	0.3
Employment rate	35.4	35.6	0.2	0.2	1.1	1.1
55 years and over, men									
Population	4,948.7	4,960.1	...	11.4	154.9	154.9	0.2	3.2	3.2
Labour force	2,166.1	2,174.8	13.3	8.7	134.5	134.5	0.4	6.6	6.6
Employment	2,022.6	2,038.4	13.7	15.8	117.1	117.1	0.8	6.1	6.1
Unemployment	143.4	136.4	7.6	-7.0	17.4	17.4	-4.9	14.6	14.6
Participation rate	43.8	43.8	0.3	0.0	1.3	1.3
Unemployment rate	6.6	6.3	0.4	-0.3	0.5	0.5
Employment rate	40.9	41.1	0.3	0.2	1.1	1.1
55 years and over, women									
Population	5,430.6	5,442.2	...	11.6	155.3	155.3	0.2	2.9	2.9
Labour force	1,748.5	1,761.5	13.8	13.0	111.8	111.8	0.7	6.8	6.8
Employment	1,655.1	1,668.1	13.7	13.0	103.0	103.0	0.8	6.6	6.6
Unemployment	93.3	93.4	6.5	0.1	8.8	8.8	0.1	10.4	10.4
Participation rate	32.2	32.4	0.3	0.2	1.2	1.2
Unemployment rate	5.3	5.3	0.4	0.0	0.2	0.2
Employment rate	30.5	30.7	0.3	0.2	1.1	1.1

1. Average standard error of change in two consecutive months (see "Sampling Errors" in Data Quality for further explanations).

Note(s): Related CANSIM table 282-0087. The sum of individual categories may not always add to the total due to rounding.

Table 2
Employment by class of worker and industry, Canada, seasonally adjusted

	November 2015	December 2015	S.E. ¹	Change from			Percent change from		
				last month	last December	twelve months ago	last month	last December	twelve months ago
in thousands									
Class of worker									
Employees	15,210.4	15,192.9	35.6	-17.5	66.6	66.6	-0.1	0.4	0.4
Self-employed ²	2,776.4	2,816.7	25.3	40.3	91.5	91.5	1.5	3.4	3.4
Public/private sector employees									
Public sector employees	3,610.6	3,602.2	20.7	-8.4	40.8	40.8	-0.2	1.1	1.1
Private sector employees	11,599.8	11,590.8	36.0	-9.0	25.9	25.9	-0.1	0.2	0.2
Industry	17,986.8	18,009.6	29.1	22.8	158.1	158.1	0.1	0.9	0.9
Goods-producing sector	3,887.3	3,887.0	16.7	-0.3	-20.5	-20.5	0.0	-0.5	-0.5
Agriculture	305.4	297.5	5.8	-7.9	-5.8	-5.8	-2.6	-1.9	-1.9
Forestry, fishing, mining, quarrying, oil and gas extraction ³	348.1	351.9	5.5	3.8	-25.6	-25.6	1.1	-6.8	-6.8
Utilities	131.9	132.3	2.4	0.4	-6.0	-6.0	0.3	-4.3	-4.3
Construction	1,372.3	1,369.5	11.4	-2.8	-19.0	-19.0	-0.2	-1.4	-1.4
Manufacturing	1,729.7	1,735.8	10.7	6.1	35.9	35.9	0.4	2.1	2.1
Services-producing sector	14,099.5	14,122.6	27.5	23.1	178.7	178.7	0.2	1.3	1.3
Trade	2,732.4	2,723.8	14.3	-8.6	8.3	8.3	-0.3	0.3	0.3
Transportation and warehousing	910.9	909.6	8.2	-1.3	5.4	5.4	-0.1	0.6	0.6
Finance, insurance, real estate and leasing	1,098.1	1,108.4	8.6	10.3	14.6	14.6	0.9	1.3	1.3
Professional, scientific and technical services	1,388.3	1,397.3	10.6	9.0	68.5	68.5	0.6	5.2	5.2
Business, building and other support services	767.5	760.4	9.9	-7.1	9.2	9.2	-0.9	1.2	1.2
Educational services	1,255.2	1,270.6	10.4	15.4	14.2	14.2	1.2	1.1	1.1
Health care and social assistance	2,314.9	2,331.4	10.8	16.5	86.2	86.2	0.7	3.8	3.8
Information, culture and recreation	755.2	751.4	9.7	-3.8	-8.7	-8.7	-0.5	-1.1	-1.1
Accommodation and food services	1,202.6	1,188.2	11.6	-14.4	-28.0	-28.0	-1.2	-2.3	-2.3
Other services	760.1	761.9	8.3	1.8	-0.7	-0.7	0.2	-0.1	-0.1
Public administration	914.4	919.7	6.9	5.3	9.6	9.6	0.6	1.1	1.1

1. Average standard error of change in two consecutive months (see "Sampling Errors" in Data Quality for further explanations).

2. Includes both incorporated and unincorporated working owners, self-employed persons who do not have a business and persons working in a family business without pay.

3. Also referred to as Natural resources.

Note(s): Related CANSIM Tables 282-0088, 282-0089. The sum of individual categories may not always add to the total due to rounding.

Table 3
Labour force characteristics by province, seasonally adjusted

	November 2015	December 2015	S.E.	Change from			Percent change from		
				last month	last December	twelve months ago	last month	last December	twelve months ago
in thousands (except rates)									
Newfoundland and Labrador									
Population	442.9	443.0	...	0.1	-0.3	-0.3	0.0	-0.1	-0.1
Labour force	270.7	272.1	2.0	1.4	3.4	3.4	0.5	1.3	1.3
Employment	235.5	232.8	2.1	-2.7	-4.3	-4.3	-1.1	-1.8	-1.8
Employment full-time	200.5	195.0	2.7	-5.5	-8.6	-8.6	-2.7	-4.2	-4.2
Employment part-time	35.0	37.8	2.1	2.8	4.3	4.3	8.0	12.8	12.8
Unemployment	35.2	39.3	2.0	4.1	7.7	7.7	11.6	24.4	24.4
Participation rate	61.1	61.4	0.5	0.3	0.8	0.8
Unemployment rate	13.0	14.4	0.7	1.4	2.6	2.6
Employment rate	53.2	52.6	0.5	-0.6	-0.9	-0.9
Prince Edward Island									
Population	121.1	121.2	...	0.1	0.5	0.5	0.1	0.4	0.4
Labour force	81.9	80.7	0.6	-1.2	-1.5	-1.5	-1.5	-1.8	-1.8
Employment	73.5	72.9	0.6	-0.6	-0.2	-0.2	-0.8	-0.3	-0.3
Employment full-time	61.3	60.8	0.9	-0.5	-1.2	-1.2	-0.8	-1.9	-1.9
Employment part-time	12.2	12.1	0.7	-0.1	1.0	1.0	-0.8	9.0	9.0
Unemployment	8.5	7.8	0.6	-0.7	-1.3	-1.3	-8.2	-14.3	-14.3
Participation rate	67.6	66.6	0.5	-1.0	-1.5	-1.5
Unemployment rate	10.4	9.7	0.7	-0.7	-1.4	-1.4
Employment rate	60.7	60.1	0.5	-0.6	-0.5	-0.5
Nova Scotia									
Population	786.8	787.0	...	0.2	2.9	2.9	0.0	0.4	0.4
Labour force	491.2	488.0	2.6	-3.2	-4.1	-4.1	-0.7	-0.8	-0.8
Employment	448.8	445.8	2.7	-3.0	-5.2	-5.2	-0.7	-1.2	-1.2
Employment full-time	374.2	368.4	3.8	-5.8	-0.6	-0.6	-1.5	-0.2	-0.2
Employment part-time	74.6	77.4	3.3	2.8	-4.6	-4.6	3.8	-5.6	-5.6
Unemployment	42.4	42.2	2.4	-0.2	1.1	1.1	-0.5	2.7	2.7
Participation rate	62.4	62.0	0.3	-0.4	-0.8	-0.8
Unemployment rate	8.6	8.6	0.5	0.0	0.2	0.2
Employment rate	57.0	56.6	0.3	-0.4	-0.9	-0.9
New Brunswick									
Population	621.8	621.9	...	0.1	0.2	0.2	0.0	0.0	0.0
Labour force	385.8	387.2	2.2	1.4	-3.0	-3.0	0.4	-0.8	-0.8
Employment	352.5	352.8	2.3	0.3	1.6	1.6	0.1	0.5	0.5
Employment full-time	299.7	301.3	3.1	1.6	5.8	5.8	0.5	2.0	2.0
Employment part-time	52.7	51.4	2.7	-1.3	-4.3	-4.3	-2.5	-7.7	-7.7
Unemployment	33.4	34.5	2.1	1.1	-4.5	-4.5	3.3	-11.5	-11.5
Participation rate	62.0	62.3	0.4	0.3	-0.5	-0.5
Unemployment rate	8.7	8.9	0.5	0.2	-1.1	-1.1
Employment rate	56.7	56.7	0.4	0.0	0.2	0.2
Quebec									
Population	6,859.4	6,862.2	...	2.8	39.9	39.9	0.0	0.6	0.6
Labour force	4,427.1	4,458.7	14.8	31.6	69.2	69.2	0.7	1.6	1.6
Employment	4,096.7	4,109.4	14.8	12.7	48.3	48.3	0.3	1.2	1.2
Employment full-time	3,320.2	3,310.5	21.4	-9.7	48.8	48.8	-0.3	1.5	1.5
Employment part-time	776.5	798.9	19.6	22.4	-0.5	-0.5	2.9	-0.1	-0.1
Unemployment	330.5	349.3	13.2	18.8	20.9	20.9	5.7	6.4	6.4
Participation rate	64.5	65.0	0.2	0.5	0.7	0.7
Unemployment rate	7.5	7.8	0.3	0.3	0.3	0.3
Employment rate	59.7	59.9	0.2	0.2	0.4	0.4
Ontario									
Population	11,436.0	11,444.5	...	8.5	124.1	124.1	0.1	1.1	1.1
Labour force	7,444.8	7,465.8	19.7	21.0	58.6	58.6	0.3	0.8	0.8
Employment	6,930.8	6,965.7	19.6	34.9	80.7	80.7	0.5	1.2	1.2
Employment full-time	5,640.4	5,682.6	28.3	42.2	142.5	142.5	0.7	2.6	2.6
Employment part-time	1,290.4	1,283.1	25.6	-7.3	-61.8	-61.8	-0.6	-4.6	-4.6
Unemployment	513.9	500.2	16.9	-13.7	-22.0	-22.0	-2.7	-4.2	-4.2
Participation rate	65.1	65.2	0.2	0.1	-0.2	-0.2
Unemployment rate	6.9	6.7	0.2	-0.2	-0.3	-0.3
Employment rate	60.6	60.9	0.2	0.3	0.1	0.1

See notes at the end of the table.

Table 3 – continued

Labour force characteristics by province, seasonally adjusted

	November 2015	December 2015	S.E.	Change from			Percent change from		
				last month	last December	twelve months ago	last month	last December	twelve months ago
in thousands (except rates)									
Manitoba									
Population	991.5	991.9	...	0.4	10.4	10.4	0.0	1.1	1.1
Labour force	677.4	674.1	2.5	-3.3	4.1	4.1	-0.5	0.6	0.6
Employment	636.4	634.0	2.5	-2.4	0.2	0.2	-0.4	0.0	0.0
Employment full-time	510.6	506.6	3.8	-4.0	-8.3	-8.3	-0.8	-1.6	-1.6
Employment part-time	125.8	127.4	3.6	1.6	8.5	8.5	1.3	7.1	7.1
Unemployment	41.0	40.1	2.1	-0.9	3.9	3.9	-2.2	10.8	10.8
Participation rate	68.3	68.0	0.3	-0.3	-0.3	-0.3
Unemployment rate	6.1	5.9	0.3	-0.2	0.5	0.5
Employment rate	64.2	63.9	0.3	-0.3	-0.7	-0.7
Saskatchewan									
Population	864.6	865.0	...	0.4	8.0	8.0	0.0	0.9	0.9
Labour force	613.3	608.4	2.6	-4.9	11.1	11.1	-0.8	1.9	1.9
Employment	579.7	575.1	2.7	-4.6	0.1	0.1	-0.8	0.0	0.0
Employment full-time	474.3	479.1	3.7	4.8	-0.6	-0.6	1.0	-0.1	-0.1
Employment part-time	105.4	96.0	3.4	-9.4	0.7	0.7	-8.9	0.7	0.7
Unemployment	33.6	33.3	2.0	-0.3	11.0	11.0	-0.9	49.3	49.3
Participation rate	70.9	70.3	0.3	-0.6	0.6	0.6
Unemployment rate	5.5	5.5	0.3	0.0	1.8	1.8
Employment rate	67.0	66.5	0.3	-0.5	-0.6	-0.6
Alberta									
Population	3,377.0	3,379.0	...	2.0	61.8	61.8	0.1	1.9	1.9
Labour force	2,461.0	2,457.0	10.0	-4.0	43.6	43.6	-0.2	1.8	1.8
Employment	2,289.5	2,285.6	10.2	-3.9	-14.6	-14.6	-0.2	-0.6	-0.6
Employment full-time	1,903.5	1,880.3	14.2	-23.2	-44.0	-44.0	-1.2	-2.3	-2.3
Employment part-time	386.0	405.4	12.7	19.4	29.5	29.5	5.0	7.8	7.8
Unemployment	171.5	171.3	7.9	-0.2	58.1	58.1	-0.1	51.3	51.3
Participation rate	72.9	72.7	0.3	-0.2	-0.1	-0.1
Unemployment rate	7.0	7.0	0.3	0.0	2.3	2.3
Employment rate	67.8	67.6	0.3	-0.2	-1.7	-1.7
British Columbia									
Population	3,899.9	3,903.2	...	3.3	54.8	54.8	0.1	1.4	1.4
Labour force	2,498.4	2,504.1	10.1	5.7	87.0	87.0	0.2	3.6	3.6
Employment	2,343.4	2,335.5	10.1	-7.9	51.6	51.6	-0.3	2.3	2.3
Employment full-time	1,838.7	1,832.5	14.9	-6.2	17.4	17.4	-0.3	1.0	1.0
Employment part-time	504.7	503.1	14.4	-1.6	34.3	34.3	-0.3	7.3	7.3
Unemployment	154.9	168.6	8.2	13.7	35.4	35.4	8.8	26.6	26.6
Participation rate	64.1	64.2	0.3	0.1	1.4	1.4
Unemployment rate	6.2	6.7	0.3	0.5	1.2	1.2
Employment rate	60.1	59.8	0.3	-0.3	0.5	0.5

1. Average standard error of change in two consecutive months (see "Sampling Errors" in Data Quality for further explanations).

Note(s): Related CANSIM Table 282-0087. The sum of individual categories may not always add to the total due to rounding.

Table 4-1
Selected labour force characteristics (seasonally adjusted) — Newfoundland and Labrador

	November 2015	December 2015	S.E.	Change from			Percent change from		
				last month	last December	twelve months ago	last month	last December	twelve months ago
in thousands (except rates)									
Both sexes, 15 years and over									
Population	442.9	443.0	...	0.1	-0.3	-0.3	0.0	-0.1	-0.1
Labour force	270.7	272.1	2.0	1.4	3.4	3.4	0.5	1.3	1.3
Employment	235.5	232.8	2.1	-2.7	-4.3	-4.3	-1.1	-1.8	-1.8
Employment full-time	200.5	195.0	2.7	-5.5	-8.6	-8.6	-2.7	-4.2	-4.2
Unemployment	35.2	39.3	2.0	4.1	7.7	7.7	11.6	24.4	24.4
Participation rate	61.1	61.4	0.5	0.3	0.8	0.8
Unemployment rate	13.0	14.4	0.7	1.4	2.6	2.6
Employment rate	53.2	52.6	0.5	-0.6	-0.9	-0.9
Part-time rate	14.9	16.2	0.9	1.4	2.1	2.1
Both sexes, 15 to 24 years									
Population	55.7	55.7	...	0.0	-1.6	-1.6	0.0	-2.8	-2.8
Labour force	36.1	37.5	1.0	1.4	1.7	1.7	3.9	4.7	4.7
Employment	31.5	31.2	0.9	-0.3	1.1	1.1	-1.0	3.7	3.7
Unemployment	4.7	6.4	0.9	1.7	0.7	0.7	36.2	12.3	12.3
Participation rate	64.8	67.3	1.8	2.5	4.8	4.8
Unemployment rate	13.0	17.1	2.3	4.1	1.2	1.2
Employment rate	56.6	56.0	1.6	-0.6	3.5	3.5
Part-time rate	42.5	48.1	3.6	5.5	7.2	7.2
Men, 25 years and over									
Population	188.7	188.8	...	0.1	0.7	0.7	0.1	0.4	0.4
Labour force	123.7	123.7	1.2	0.0	0.3	0.3	0.0	0.2	0.2
Employment	104.5	102.4	1.4	-2.1	-5.1	-5.1	-2.0	-4.7	-4.7
Unemployment	19.2	21.3	1.4	2.1	5.3	5.3	10.9	33.1	33.1
Participation rate	65.6	65.5	0.6	-0.1	-0.1	-0.1
Unemployment rate	15.5	17.2	1.1	1.7	4.2	4.2
Employment rate	55.4	54.2	0.7	-1.2	-3.0	-3.0
Part-time rate	4.9	3.2	0.9	-1.7	-1.2	-1.2
Women, 25 years and over									
Population	198.5	198.6	...	0.1	0.7	0.7	0.1	0.4	0.4
Labour force	110.9	110.8	1.1	-0.1	1.3	1.3	-0.1	1.2	1.2
Employment	99.5	99.2	1.1	-0.3	-0.3	-0.3	-0.3	-0.3	-0.3
Unemployment	11.4	11.6	1.0	0.2	1.6	1.6	1.8	16.0	16.0
Participation rate	55.9	55.8	0.6	-0.1	0.5	0.5
Unemployment rate	10.3	10.5	0.9	0.2	1.4	1.4
Employment rate	50.1	49.9	0.6	-0.2	-0.4	-0.4
Part-time rate	16.6	19.7	1.4	3.1	3.3	3.3
Industry									
	235.5	232.8	2.1	-2.7	-4.3	-4.3	-1.1	-1.8	-1.8
Goods-producing sector									
	52.9	51.7	1.5	-1.2	-4.6	-4.6	-2.3	-8.2	-8.2
Agriculture	1.1	1.2	0.4	0.1	-0.4	-0.4	9.1	-25.0	-25.0
Forestry, fishing, mining, quarrying, oil and gas extraction ²	15.0	15.3	0.8	0.3	-1.9	-1.9	2.0	-11.0	-11.0
Utilities	2.2	2.3	0.3	0.1	-0.7	-0.7	4.5	-23.3	-23.3
Construction	23.4	21.9	1.0	-1.5	-1.7	-1.7	-6.4	-7.2	-7.2
Manufacturing	11.2	11.0	0.7	-0.2	0.1	0.1	-1.8	0.9	0.9
Services-producing sector									
	182.6	181.0	1.8	-1.6	0.2	0.2	-0.9	0.1	0.1
Trade	43.1	43.2	1.0	0.1	4.0	4.0	0.2	10.2	10.2
Transportation and warehousing	8.9	9.1	0.6	0.2	-0.7	-0.7	2.2	-7.1	-7.1
Finance, insurance, real estate and leasing	8.6	8.8	0.4	0.2	0.8	0.8	2.3	10.0	10.0
Professional, scientific and technical services	11.4	11.3	0.5	-0.1	0.5	0.5	-0.9	4.6	4.6
Business, building and other support services	7.7	8.3	0.5	0.6	1.4	1.4	7.8	20.3	20.3
Educational services	14.6	14.8	0.6	0.2	-1.9	-1.9	1.4	-11.4	-11.4
Health care and social assistance	38.4	39.0	0.8	0.6	1.5	1.5	1.6	4.0	4.0
Information, culture and recreation	7.2	5.9	0.6	-1.3	-1.5	-1.5	-18.1	-20.3	-20.3
Accommodation and food services	14.3	14.2	0.8	-0.1	-1.7	-1.7	-0.7	-10.7	-10.7
Other services	13.0	12.4	0.6	-0.6	0.3	0.3	-4.6	2.5	2.5
Public administration	15.5	14.2	0.6	-1.3	-2.3	-2.3	-8.4	-13.9	-13.9

1. Average standard error of change in two consecutive months (see "Sampling Errors" in Data Quality for further explanations).

2. Also referred to as Natural resources.

Note(s): Related CANSIM Tables 282-0087, 282-0088. The sum of individual categories may not always add to the total due to rounding.

Table 4-2
Selected labour force characteristics (seasonally adjusted) — Prince Edward Island

	November 2015	December 2015	S.E.	Change from			Percent change from		
				last month	last December	twelve months ago	last month	last December	twelve months ago
in thousands (except rates)									
Both sexes, 15 years and over									
Population	121.1	121.2	...	0.1	0.5	0.5	0.1	0.4	0.4
Labour force	81.9	80.7	0.6	-1.2	-1.5	-1.5	-1.5	-1.8	-1.8
Employment	73.5	72.9	0.6	-0.6	-0.2	-0.2	-0.8	-0.3	-0.3
Employment full-time	61.3	60.8	0.9	-0.5	-1.2	-1.2	-0.8	-1.9	-1.9
Unemployment	8.5	7.8	0.6	-0.7	-1.3	-1.3	-8.2	-14.3	-14.3
Participation rate	67.6	66.6	0.5	-1.0	-1.5	-1.5
Unemployment rate	10.4	9.7	0.7	-0.7	-1.4	-1.4
Employment rate	60.7	60.1	0.5	-0.6	-0.5	-0.5
Part-time rate	16.6	16.6	1.0	0.0	1.4	1.4
Both sexes, 15 to 24 years									
Population	18.1	18.1	...	0.0	-0.4	-0.4	0.0	-2.2	-2.2
Labour force	13.3	12.9	0.3	-0.4	0.5	0.5	-3.0	4.0	4.0
Employment	11.2	11.2	0.4	0.0	1.0	1.0	0.0	9.8	9.8
Unemployment	2.1	1.7	0.3	-0.4	-0.6	-0.6	-19.0	-26.1	-26.1
Participation rate	73.5	71.3	1.8	-2.2	4.3	4.3
Unemployment rate	15.8	13.2	2.4	-2.6	-5.3	-5.3
Employment rate	61.9	61.9	1.9	0.0	6.8	6.8
Part-time rate	40.2	42.0	3.6	1.8	-3.1	-3.1
Men, 25 years and over									
Population	49.4	49.4	...	0.0	0.4	0.4	0.0	0.8	0.8
Labour force	35.0	34.7	0.3	-0.3	-1.0	-1.0	-0.9	-2.8	-2.8
Employment	31.5	31.4	0.4	-0.1	-0.7	-0.7	-0.3	-2.2	-2.2
Unemployment	3.5	3.3	0.4	-0.2	-0.3	-0.3	-5.7	-8.3	-8.3
Participation rate	70.9	70.2	0.7	-0.7	-2.7	-2.7
Unemployment rate	10.0	9.5	1.0	-0.5	-0.6	-0.6
Employment rate	63.8	63.6	0.8	-0.2	-1.9	-1.9
Part-time rate	8.6	7.6	1.0	-0.9	2.7	2.7
Women, 25 years and over									
Population	53.7	53.7	...	0.0	0.4	0.4	0.0	0.8	0.8
Labour force	33.7	33.1	0.3	-0.6	-1.0	-1.0	-1.8	-2.9	-2.9
Employment	30.8	30.3	0.4	-0.5	-0.5	-0.5	-1.6	-1.6	-1.6
Unemployment	2.9	2.8	0.3	-0.1	-0.4	-0.4	-3.4	-12.5	-12.5
Participation rate	62.8	61.6	0.6	-1.2	-2.4	-2.4
Unemployment rate	8.6	8.5	1.0	-0.1	-0.9	-0.9
Employment rate	57.4	56.4	0.7	-1.0	-1.4	-1.4
Part-time rate	16.2	16.5	1.6	0.3	0.6	0.6
Industry									
Goods-producing sector	73.5	72.9	0.6	-0.6	-0.2	-0.2	-0.8	-0.3	-0.3
Agriculture	17.5	16.9	0.4	-0.6	-0.4	-0.4	-3.4	-2.3	-2.3
Forestry, fishing, mining, quarrying, oil and gas extraction ²	3.5	3.0	0.3	-0.5	0.1	0.1	-14.3	3.4	3.4
Utilities	2.3	2.4	0.2	0.1	0.1	0.1	4.3	4.3	4.3
Construction	0.4	0.3	0.1	-0.1	0.0	0.0	-25.0	0.0	0.0
Manufacturing	5.1	4.9	0.3	-0.2	-0.7	-0.7	-3.9	-12.5	-12.5
	6.2	6.1	0.2	-0.1	-0.1	-0.1	-1.6	-1.6	-1.6
Services-producing sector									
Trade	55.9	56.0	0.6	0.1	0.2	0.2	0.2	0.4	0.4
Transportation and warehousing	11.1	10.8	0.3	-0.3	-0.2	-0.2	-2.7	-1.8	-1.8
Finance, insurance, real estate and leasing	2.1	2.4	0.2	0.3	-0.7	-0.7	14.3	-22.6	-22.6
Professional, scientific and technical services	2.5	2.7	0.1	0.2	0.5	0.5	8.0	22.7	22.7
Business, building and other support services	3.3	3.3	0.1	0.0	0.4	0.4	0.0	13.8	13.8
Educational services	2.7	2.5	0.2	-0.2	-0.2	-0.2	-7.4	-7.4	-7.4
Health care and social assistance	5.4	5.5	0.2	0.1	0.2	0.2	1.9	3.8	3.8
Information, culture and recreation	10.1	9.6	0.2	-0.5	-0.3	-0.3	-5.0	-3.0	-3.0
Accommodation and food services	2.3	2.2	0.2	-0.1	-0.2	-0.2	-4.3	-8.3	-8.3
Other services	6.2	6.7	0.3	0.5	1.1	1.1	8.1	19.6	19.6
Public administration	3.1	3.4	0.2	0.3	-0.2	-0.2	9.7	-5.6	-5.6
	7.1	6.9	0.2	-0.2	-0.3	-0.3	-2.8	-4.2	-4.2

1. Average standard error of change in two consecutive months (see "Sampling Errors" in Data Quality for further explanations).

2. Also referred to as Natural resources.

Note(s): Related CANSIM Tables 282-0087, 282-0088. The sum of individual categories may not always add to the total due to rounding.

Table 4-3

Selected labour force characteristics (seasonally adjusted) — Nova Scotia

	November 2015	December 2015	S.E.	Change from			Percent change from		
				last month	last December	twelve months ago	last month	last December	twelve months ago
in thousands (except rates)									
Both sexes, 15 years and over									
Population	786.8	787.0	...	0.2	2.9	2.9	0.0	0.4	0.4
Labour force	491.2	488.0	2.6	-3.2	-4.1	-4.1	-0.7	-0.8	-0.8
Employment	448.8	445.8	2.7	-3.0	-5.2	-5.2	-0.7	-1.2	-1.2
Employment full-time	374.2	368.4	3.8	-5.8	-0.6	-0.6	-1.5	-0.2	-0.2
Unemployment	42.4	42.2	2.4	-0.2	1.1	1.1	-0.5	2.7	2.7
Participation rate	62.4	62.0	0.3	-0.4	-0.8	-0.8
Unemployment rate	8.6	8.6	0.5	0.0	0.2	0.2
Employment rate	57.0	56.6	0.3	-0.4	-0.9	-0.9
Part-time rate	16.6	17.4	0.7	0.7	-0.8	-0.8
Both sexes, 15 to 24 years									
Population	110.7	110.6	...	-0.1	-2.2	-2.2	-0.1	-2.0	-2.0
Labour force	71.3	70.8	1.6	-0.5	-2.7	-2.7	-0.7	-3.7	-3.7
Employment	60.3	59.9	1.4	-0.4	-2.8	-2.8	-0.7	-4.5	-4.5
Unemployment	11.0	10.9	1.5	-0.1	0.1	0.1	-0.9	0.9	0.9
Participation rate	64.4	64.0	1.4	-0.4	-1.2	-1.2
Unemployment rate	15.4	15.4	1.8	0.0	0.7	0.7
Employment rate	54.5	54.2	1.3	-0.3	-1.4	-1.4
Part-time rate	40.1	43.6	2.9	3.4	-2.2	-2.2
Men, 25 years and over									
Population	323.7	323.9	...	0.2	2.7	2.7	0.1	0.8	0.8
Labour force	214.0	211.8	1.5	-2.2	-1.8	-1.8	-1.0	-0.8	-0.8
Employment	194.9	193.3	1.7	-1.6	-3.7	-3.7	-0.8	-1.9	-1.9
Unemployment	19.1	18.5	1.5	-0.6	1.9	1.9	-3.1	11.4	11.4
Participation rate	66.1	65.4	0.5	-0.7	-1.1	-1.1
Unemployment rate	8.9	8.7	0.7	-0.2	0.9	0.9
Employment rate	60.2	59.7	0.5	-0.5	-1.6	-1.6
Part-time rate	7.4	7.4	0.8	0.0	-0.7	-0.7
Women, 25 years and over									
Population	352.3	352.5	...	0.2	2.5	2.5	0.1	0.7	0.7
Labour force	205.9	205.5	1.4	-0.4	0.5	0.5	-0.2	0.2	0.2
Employment	193.6	192.6	1.4	-1.0	1.3	1.3	-0.5	0.7	0.7
Unemployment	12.3	12.9	1.2	0.6	-0.8	-0.8	4.9	-5.8	-5.8
Participation rate	58.4	58.3	0.4	-0.1	-0.3	-0.3
Unemployment rate	6.0	6.3	0.6	0.3	-0.4	-0.4
Employment rate	55.0	54.6	0.4	-0.4	-0.1	-0.1
Part-time rate	18.6	19.3	1.2	0.7	-0.2	-0.2
Industry									
Goods-producing sector	448.8	445.8	2.7	-3.0	-5.2	-5.2	-0.7	-1.2	-1.2
Agriculture	85.4	84.8	1.7	-0.6	3.2	3.2	-0.7	3.9	3.9
Forestry, fishing, mining, quarrying, oil and gas extraction ²	5.7	6.0	0.6	0.3	1.4	1.4	5.3	30.4	30.4
Utilities	11.4	10.8	1.0	-0.6	-1.8	-1.8	-5.3	-14.3	-14.3
Construction	3.8	3.8	0.3	0.0	-0.2	-0.2	0.0	-5.0	-5.0
Manufacturing	34.1	33.5	1.1	-0.6	1.9	1.9	-1.8	6.0	6.0
	30.5	30.8	0.9	0.3	2.0	2.0	1.0	6.9	6.9
Services-producing sector									
Trade	363.4	361.0	2.5	-2.4	-8.4	-8.4	-0.7	-2.3	-2.3
Transportation and warehousing	71.3	71.2	1.3	-0.1	-3.3	-3.3	-0.1	-4.4	-4.4
Finance, insurance, real estate and leasing	20.7	20.5	0.8	-0.2	-2.1	-2.1	-1.0	-9.3	-9.3
Professional, scientific and technical services	24.0	24.6	0.7	0.6	1.6	1.6	2.5	7.0	7.0
Business, building and other support services	25.9	25.9	0.8	0.0	-0.3	-0.3	0.0	-1.1	-1.1
Educational services	19.2	17.9	0.8	-1.3	-0.8	-0.8	-6.8	-4.3	-4.3
Health care and social assistance	35.6	36.6	1.1	1.0	0.8	0.8	2.8	2.2	2.2
Information, culture and recreation	73.8	72.1	1.0	-1.7	1.6	1.6	-2.3	2.3	2.3
Accommodation and food services	16.6	16.1	0.8	-0.5	-3.9	-3.9	-3.0	-19.5	-19.5
Other services	29.8	30.0	1.1	0.2	-2.7	-2.7	0.7	-8.3	-8.3
Public administration	18.7	18.7	0.8	0.0	0.9	0.9	0.0	5.1	5.1
	27.8	27.6	0.7	-0.2	0.1	0.1	-0.7	0.4	0.4

1. Average standard error of change in two consecutive months (see "Sampling Errors" in Data Quality for further explanations).

2. Also referred to as Natural resources.

Note(s): Related CANSIM Tables 282-0087, 282-0088. The sum of individual categories may not always add to the total due to rounding.

Table 4-4
Selected labour force characteristics (seasonally adjusted) — New Brunswick

	November 2015	December 2015	S.E.	Change from			Percent change from		
				last month	last December	twelve months ago	last month	last December	twelve months ago
in thousands (except rates)									
Both sexes, 15 years and over									
Population	621.8	621.9	...	0.1	0.2	0.2	0.0	0.0	0.0
Labour force	385.8	387.2	2.2	1.4	-3.0	-3.0	0.4	-0.8	-0.8
Employment	352.5	352.8	2.3	0.3	1.6	1.6	0.1	0.5	0.5
Employment full-time	299.7	301.3	3.1	1.6	5.8	5.8	0.5	2.0	2.0
Unemployment	33.4	34.5	2.1	1.1	-4.5	-4.5	3.3	-11.5	-11.5
Participation rate	62.0	62.3	0.4	0.3	-0.5	-0.5
Unemployment rate	8.7	8.9	0.5	0.2	-1.1	-1.1
Employment rate	56.7	56.7	0.4	0.0	0.2	0.2
Part-time rate	15.0	14.6	0.8	-0.4	-1.3	-1.3
Both sexes, 15 to 24 years									
Population	83.8	83.6	...	-0.2	-1.8	-1.8	-0.2	-2.1	-2.1
Labour force	50.4	51.8	1.3	1.4	-1.4	-1.4	2.8	-2.6	-2.6
Employment	43.7	42.9	1.1	-0.8	-0.7	-0.7	-1.8	-1.6	-1.6
Unemployment	6.7	8.9	1.1	2.2	-0.6	-0.6	32.8	-6.3	-6.3
Participation rate	60.1	62.0	1.5	1.9	-0.3	-0.3
Unemployment rate	13.3	17.2	1.9	3.9	-0.7	-0.7
Employment rate	52.1	51.3	1.3	-0.8	0.2	0.2
Part-time rate	40.3	44.3	3.0	4.0	0.7	0.7
Men, 25 years and over									
Population	260.6	260.6	...	0.0	0.8	0.8	0.0	0.3	0.3
Labour force	173.0	172.9	1.3	-0.1	-2.9	-2.9	-0.1	-1.6	-1.6
Employment	155.9	156.7	1.5	0.8	-0.4	-0.4	0.5	-0.3	-0.3
Unemployment	17.1	16.2	1.5	-0.9	-2.5	-2.5	-5.3	-13.4	-13.4
Participation rate	66.4	66.3	0.5	-0.1	-1.4	-1.4
Unemployment rate	9.9	9.4	0.8	-0.5	-1.2	-1.2
Employment rate	59.8	60.1	0.6	0.3	-0.4	-0.4
Part-time rate	6.9	5.9	0.8	-1.0	-0.9	-0.9
Women, 25 years and over									
Population	277.5	277.6	...	0.1	1.0	1.0	0.0	0.4	0.4
Labour force	162.4	162.6	1.2	0.2	1.4	1.4	0.1	0.9	0.9
Employment	152.8	153.2	1.3	0.4	2.7	2.7	0.3	1.8	1.8
Unemployment	9.6	9.4	1.1	-0.2	-1.3	-1.3	-2.1	-12.1	-12.1
Participation rate	58.5	58.6	0.4	0.1	0.3	0.3
Unemployment rate	5.9	5.8	0.7	-0.1	-0.8	-0.8
Employment rate	55.1	55.2	0.5	0.1	0.8	0.8
Part-time rate	16.0	15.1	1.2	-0.8	-2.2	-2.2
Industry									
	352.5	352.8	2.3	0.3	1.6	1.6	0.1	0.5	0.5
Goods-producing sector									
	73.7	75.9	1.6	2.2	1.8	1.8	3.0	2.4	2.4
Agriculture	3.9	4.4	0.5	0.5	0.3	0.3	12.8	7.3	7.3
Forestry, fishing, mining, quarrying, oil and gas extraction ²	11.3	11.2	0.8	-0.1	0.2	0.2	-0.9	1.8	1.8
Utilities	3.6	3.7	0.2	0.1	0.2	0.2	2.8	5.7	5.7
Construction	26.0	26.6	1.1	0.6	0.1	0.1	2.3	0.4	0.4
Manufacturing	28.9	30.0	0.8	1.1	0.9	0.9	3.8	3.1	3.1
Services-producing sector									
	278.8	276.9	2.1	-1.9	-0.2	-0.2	-0.7	-0.1	-0.1
Trade	56.0	54.8	1.1	-1.2	0.3	0.3	-2.1	0.6	0.6
Transportation and warehousing	20.7	20.5	0.6	-0.2	3.5	3.5	-1.0	20.6	20.6
Finance, insurance, real estate and leasing	14.9	15.4	0.5	0.5	0.4	0.4	3.4	2.7	2.7
Professional, scientific and technical services	15.6	14.6	0.6	-1.0	-3.7	-3.7	-6.4	-20.2	-20.2
Business, building and other support services	18.0	17.8	0.9	-0.2	-2.5	-2.5	-1.1	-12.3	-12.3
Educational services	26.3	26.2	0.8	-0.1	-0.9	-0.9	-0.4	-3.3	-3.3
Health care and social assistance	53.8	52.7	0.9	-1.1	2.2	2.2	-2.0	4.4	4.4
Information, culture and recreation	11.1	11.8	0.7	0.7	0.2	0.2	6.3	1.7	1.7
Accommodation and food services	23.7	24.0	0.8	0.3	1.8	1.8	1.3	8.1	8.1
Other services	15.9	15.0	0.6	-0.9	-1.3	-1.3	-5.7	-8.0	-8.0
Public administration	22.7	24.2	0.7	1.5	-0.2	-0.2	6.6	-0.8	-0.8

1. Average standard error of change in two consecutive months (see "Sampling Errors" in Data Quality for further explanations).

2. Also referred to as Natural resources.

Note(s): Related CANSIM Tables 282-0087, 282-0088. The sum of individual categories may not always add to the total due to rounding.

Table 4-5
Selected labour force characteristics (seasonally adjusted) — Quebec

	November 2015	December 2015	S.E.	Change from			Percent change from		
				last month	last December	twelve months ago	last month	last December	twelve months ago
in thousands (except rates)									
Both sexes, 15 years and over									
Population	6,859.4	6,862.2	...	2.8	39.9	39.9	0.0	0.6	0.6
Labour force	4,427.1	4,458.7	14.8	31.6	69.2	69.2	0.7	1.6	1.6
Employment	4,096.7	4,109.4	14.8	12.7	48.3	48.3	0.3	1.2	1.2
Employment full-time	3,320.2	3,310.5	21.4	-9.7	48.8	48.8	-0.3	1.5	1.5
Unemployment	330.5	349.3	13.2	18.8	20.9	20.9	5.7	6.4	6.4
Participation rate	64.5	65.0	0.2	0.5	0.7	0.7
Unemployment rate	7.5	7.8	0.3	0.3	0.3	0.3
Employment rate	59.7	59.9	0.2	0.2	0.4	0.4
Part-time rate	19.0	19.4	0.5	0.5	-0.2	-0.2
Both sexes, 15 to 24 years									
Population	950.5	948.6	...	-1.9	-22.6	-22.6	-0.2	-2.3	-2.3
Labour force	638.2	645.1	8.3	6.9	-9.7	-9.7	1.1	-1.5	-1.5
Employment	565.1	562.0	8.0	-3.1	-1.4	-1.4	-0.5	-0.2	-0.2
Unemployment	73.1	83.1	7.5	10.0	-8.4	-8.4	13.7	-9.2	-9.2
Participation rate	67.1	68.0	0.9	0.9	0.6	0.6
Unemployment rate	11.5	12.9	1.1	1.4	-1.1	-1.1
Employment rate	59.5	59.2	0.8	-0.3	1.2	1.2
Part-time rate	52.0	53.3	1.7	1.3	-0.5	-0.5
Men, 25 years and over									
Population	2,914.5	2,916.8	...	2.3	31.3	31.3	0.1	1.1	1.1
Labour force	2,030.4	2,038.5	8.3	8.1	55.9	55.9	0.4	2.8	2.8
Employment	1,878.9	1,884.3	9.0	5.4	36.6	36.6	0.3	2.0	2.0
Unemployment	151.5	154.3	8.3	2.8	19.3	19.3	1.8	14.3	14.3
Participation rate	69.7	69.9	0.3	0.2	1.2	1.2
Unemployment rate	7.5	7.6	0.4	0.1	0.8	0.8
Employment rate	64.5	64.6	0.3	0.1	0.6	0.6
Part-time rate	8.4	8.7	0.6	0.3	0.5	0.5
Women, 25 years and over									
Population	2,994.4	2,996.8	...	2.4	31.2	31.2	0.1	1.1	1.1
Labour force	1,758.6	1,775.1	8.3	16.5	23.0	23.0	0.9	1.3	1.3
Employment	1,652.7	1,663.1	8.1	10.4	13.0	13.0	0.6	0.8	0.8
Unemployment	105.9	112.0	6.9	6.1	10.0	10.0	5.8	9.8	9.8
Participation rate	58.7	59.2	0.3	0.5	0.1	0.1
Unemployment rate	6.0	6.3	0.4	0.3	0.5	0.5
Employment rate	55.2	55.5	0.3	0.3	-0.1	-0.1
Part-time rate	19.7	20.1	0.8	0.5	-0.7	-0.7
Industry	4,096.7	4,109.4	14.8	12.7	48.3	48.3	0.3	1.2	1.2
Goods-producing sector	832.2	838.0	8.5	5.8	-30.8	-30.8	0.7	-3.5	-3.5
Agriculture	57.2	61.2	2.6	4.0	5.5	5.5	7.0	9.9	9.9
Forestry, fishing, mining, quarrying, oil and gas extraction ²	31.9	32.3	2.0	0.4	-1.0	-1.0	1.3	-3.0	-3.0
Utilities	26.9	26.5	1.3	-0.4	-3.5	-3.5	-1.5	-11.7	-11.7
Construction	220.7	227.4	5.7	6.7	-43.6	-43.6	3.0	-16.1	-16.1
Manufacturing	495.6	490.6	5.9	-5.0	11.7	11.7	-1.0	2.4	2.4
Services-producing sector	3,264.4	3,271.4	13.9	7.0	79.1	79.1	0.2	2.5	2.5
Trade	667.6	652.7	7.2	-14.9	2.1	2.1	-2.2	0.3	0.3
Transportation and warehousing	192.1	196.7	3.9	4.6	10.9	10.9	2.4	5.9	5.9
Finance, insurance, real estate and leasing	211.8	210.0	3.9	-1.8	-4.4	-4.4	-0.8	-2.1	-2.1
Professional, scientific and technical services	325.5	323.8	5.2	-1.7	29.1	29.1	-0.5	9.9	9.9
Business, building and other support services	172.5	176.7	4.8	4.2	14.9	14.9	2.4	9.2	9.2
Educational services	268.4	272.4	5.1	4.0	-1.8	-1.8	1.5	-0.7	-0.7
Health care and social assistance	574.6	582.9	5.8	8.3	18.5	18.5	1.4	3.3	3.3
Information, culture and recreation	174.5	173.1	5.2	-1.4	0.6	0.6	-0.8	0.3	0.3
Accommodation and food services	276.6	280.9	5.7	4.3	-4.1	-4.1	1.6	-1.4	-1.4
Other services	161.6	160.7	4.2	-0.9	-3.7	-3.7	-0.6	-2.3	-2.3
Public administration	239.3	241.6	3.5	2.3	17.1	17.1	1.0	7.6	7.6

1. Average standard error of change in two consecutive months (see "Sampling Errors" in Data Quality for further explanations).

2. Also referred to as Natural resources.

Note(s): Related CANSIM Tables 282-0087, 282-0088. The sum of individual categories may not always add to the total due to rounding.

Table 4-6
Selected labour force characteristics (seasonally adjusted) — Ontario

	November 2015	December 2015	S.E.	Change from			Percent change from		
				last month	last December	twelve months ago	last month	last December	twelve months ago
in thousands (except rates)									
Both sexes, 15 years and over									
Population	11,436.0	11,444.5	...	8.5	124.1	124.1	0.1	1.1	1.1
Labour force	7,444.8	7,465.8	19.7	21.0	58.6	58.6	0.3	0.8	0.8
Employment	6,930.8	6,965.7	19.6	34.9	80.7	80.7	0.5	1.2	1.2
Employment full-time	5,640.4	5,682.6	28.3	42.2	142.5	142.5	0.7	2.6	2.6
Unemployment	513.9	500.2	16.9	-13.7	-22.0	-22.0	-2.7	-4.2	-4.2
Participation rate	65.1	65.2	0.2	0.1	-0.2	-0.2
Unemployment rate	6.9	6.7	0.2	-0.2	-0.3	-0.3
Employment rate	60.6	60.9	0.2	0.3	0.1	0.1
Part-time rate	18.6	18.4	0.4	-0.2	-1.1	-1.1
Both sexes, 15 to 24 years									
Population	1,792.5	1,791.1	...	-1.4	-11.8	-11.8	-0.1	-0.7	-0.7
Labour force	1,077.0	1,068.5	12.3	-8.5	-56.1	-56.1	-0.8	-5.0	-5.0
Employment	926.1	921.3	10.9	-4.8	-24.6	-24.6	-0.5	-2.6	-2.6
Unemployment	150.8	147.2	10.6	-3.6	-31.5	-31.5	-2.4	-17.6	-17.6
Participation rate	60.1	59.7	0.7	-0.4	-2.7	-2.7
Unemployment rate	14.0	13.8	0.9	-0.2	-2.1	-2.1
Employment rate	51.7	51.4	0.6	-0.3	-1.1	-1.1
Part-time rate	48.9	48.3	1.3	-0.6	-4.5	-4.5
Men, 25 years and over									
Population	4,651.7	4,656.4	...	4.7	65.9	65.9	0.1	1.4	1.4
Labour force	3,341.2	3,356.1	10.4	14.9	46.4	46.4	0.4	1.4	1.4
Employment	3,155.4	3,165.2	11.1	9.8	41.0	41.0	0.3	1.3	1.3
Unemployment	185.8	190.9	9.6	5.1	5.4	5.4	2.7	2.9	2.9
Participation rate	71.8	72.1	0.2	0.3	0.0	0.0
Unemployment rate	5.6	5.7	0.3	0.1	0.1	0.1
Employment rate	67.8	68.0	0.2	0.2	-0.1	-0.1
Part-time rate	8.1	7.7	0.4	-0.4	-0.6	-0.6
Women, 25 years and over									
Population	4,991.9	4,996.9	...	5.0	69.9	69.9	0.1	1.4	1.4
Labour force	3,026.6	3,041.2	11.0	14.6	68.3	68.3	0.5	2.3	2.3
Employment	2,849.3	2,879.2	10.9	29.9	64.3	64.3	1.0	2.3	2.3
Unemployment	177.3	162.1	8.8	-15.2	4.1	4.1	-8.6	2.6	2.6
Participation rate	60.6	60.9	0.2	0.3	0.6	0.6
Unemployment rate	5.9	5.3	0.3	-0.6	0.0	0.0
Employment rate	57.1	57.6	0.2	0.5	0.5	0.5
Part-time rate	20.4	20.6	0.6	0.2	-0.2	-0.2
Industry	6,930.8	6,965.7	19.6	34.9	80.7	80.7	0.5	1.2	1.2
Goods-producing sector	1,411.4	1,419.6	10.4	8.2	33.6	33.6	0.6	2.4	2.4
Agriculture	78.8	76.4	2.8	-2.4	-5.6	-5.6	-3.0	-6.8	-6.8
Forestry, fishing, mining, quarrying, oil and gas extraction ²	44.1	43.8	1.9	-0.3	4.4	4.4	-0.7	11.2	11.2
Utilities	44.1	45.6	1.2	1.5	-5.3	-5.3	3.4	-10.4	-10.4
Construction	499.7	496.4	6.9	-3.3	28.0	28.0	-0.7	6.0	6.0
Manufacturing	744.7	757.4	7.4	12.7	12.1	12.1	1.7	1.6	1.6
Services-producing sector	5,519.4	5,546.0	18.7	26.6	47.0	47.0	0.5	0.9	0.9
Trade	1,027.4	1,033.6	9.7	6.2	-9.0	-9.0	0.6	-0.9	-0.9
Transportation and warehousing	330.9	325.7	5.1	-5.2	9.7	9.7	-1.6	3.1	3.1
Finance, insurance, real estate and leasing	549.4	557.8	6.3	8.4	35.4	35.4	1.5	6.8	6.8
Professional, scientific and technical services	587.2	590.6	7.4	3.4	36.9	36.9	0.6	6.7	6.7
Business, building and other support services	329.6	326.2	7.2	-3.4	-16.6	-16.6	-1.0	-4.8	-4.8
Educational services	504.6	507.8	7.2	3.2	1.1	1.1	0.6	0.2	0.2
Health care and social assistance	818.1	829.8	7.0	11.7	19.7	19.7	1.4	2.4	2.4
Information, culture and recreation	305.0	299.5	6.6	-5.5	-28.8	-28.8	-1.8	-8.8	-8.8
Accommodation and food services	444.6	444.6	7.5	0.0	2.5	2.5	0.0	0.6	0.6
Other services	278.5	280.6	5.2	2.1	10.5	10.5	0.8	3.9	3.9
Public administration	344.0	349.8	4.8	5.8	-14.4	-14.4	1.7	-4.0	-4.0

1. Average standard error of change in two consecutive months (see "Sampling Errors" in Data Quality for further explanations).

2. Also referred to as Natural resources.

Note(s): Related CANSIM Tables 282-0087, 282-0088. The sum of individual categories may not always add to the total due to rounding.

Table 4-7
Selected labour force characteristics (seasonally adjusted) — Manitoba

	November 2015	December 2015	S.E.	Change from			Percent change from		
				last month	last December	twelve months ago	last month	last December	twelve months ago
in thousands (except rates)									
Both sexes, 15 years and over									
Population	991.5	991.9	...	0.4	10.4	10.4	0.0	1.1	1.1
Labour force	677.4	674.1	2.5	-3.3	4.1	4.1	-0.5	0.6	0.6
Employment	636.4	634.0	2.5	-2.4	0.2	0.2	-0.4	0.0	0.0
Employment full-time	510.6	506.6	3.8	-4.0	-8.3	-8.3	-0.8	-1.6	-1.6
Unemployment	41.0	40.1	2.1	-0.9	3.9	3.9	-2.2	10.8	10.8
Participation rate	68.3	68.0	0.3	-0.3	-0.3	-0.3
Unemployment rate	6.1	5.9	0.3	-0.2	0.5	0.5
Employment rate	64.2	63.9	0.3	-0.3	-0.7	-0.7
Part-time rate	19.8	20.1	0.6	0.3	1.3	1.3
Both sexes, 15 to 24 years									
Population	163.0	162.9	...	-0.1	-0.4	-0.4	-0.1	-0.2	-0.2
Labour force	107.4	106.9	1.6	-0.5	-4.3	-4.3	-0.5	-3.9	-3.9
Employment	94.4	93.3	1.5	-1.1	-6.0	-6.0	-1.2	-6.0	-6.0
Unemployment	13.0	13.6	1.4	0.6	1.7	1.7	4.6	14.3	14.3
Participation rate	65.9	65.6	1.0	-0.3	-2.5	-2.5
Unemployment rate	12.1	12.7	1.2	0.6	2.0	2.0
Employment rate	57.9	57.3	0.9	-0.6	-3.5	-3.5
Part-time rate	45.8	46.4	1.8	0.6	4.4	4.4
Men, 25 years and over									
Population	406.2	406.5	...	0.3	5.6	5.6	0.1	1.4	1.4
Labour force	302.4	300.6	1.3	-1.8	0.4	0.4	-0.6	0.1	0.1
Employment	286.9	286.7	1.4	-0.2	0.0	0.0	-0.1	0.0	0.0
Unemployment	15.5	13.8	1.2	-1.7	0.3	0.3	-11.0	2.2	2.2
Participation rate	74.4	73.9	0.3	-0.5	-1.0	-1.0
Unemployment rate	5.1	4.6	0.4	-0.5	0.1	0.1
Employment rate	70.6	70.5	0.3	-0.1	-1.0	-1.0
Part-time rate	7.7	7.6	0.6	-0.1	-0.5	-0.5
Women, 25 years and over									
Population	422.3	422.6	...	0.3	5.3	5.3	0.1	1.3	1.3
Labour force	267.6	266.7	1.5	-0.9	8.0	8.0	-0.3	3.1	3.1
Employment	255.2	254.0	1.4	-1.2	6.1	6.1	-0.5	2.5	2.5
Unemployment	12.5	12.7	1.1	0.2	1.9	1.9	1.6	17.6	17.6
Participation rate	63.4	63.1	0.3	-0.3	1.1	1.1
Unemployment rate	4.7	4.8	0.4	0.1	0.6	0.6
Employment rate	60.4	60.1	0.3	-0.3	0.7	0.7
Part-time rate	23.7	24.5	0.9	0.8	2.8	2.8
Industry									
Population	636.4	634.0	2.5	-2.4	0.2	0.2	-0.4	0.0	0.0
Goods-producing sector									
Agriculture	148.4	149.9	1.6	1.5	0.7	0.7	1.0	0.5	0.5
Forestry, fishing, mining, quarrying, oil and gas extraction ²	23.5	24.5	0.9	1.0	2.0	2.0	4.3	8.9	8.9
Utilities	5.7	6.1	0.4	0.4	-0.5	-0.5	7.0	-7.6	-7.6
Construction	8.6	8.7	0.3	0.1	1.3	1.3	1.2	17.6	17.6
Manufacturing	45.5	46.2	1.0	0.7	-1.4	-1.4	1.5	-2.9	-2.9
	65.2	64.4	0.9	-0.8	-0.7	-0.7	-1.2	-1.1	-1.1
Services-producing sector									
Trade	488.0	484.1	2.4	-3.9	-0.5	-0.5	-0.8	-0.1	-0.1
Transportation and warehousing	90.7	89.5	1.3	-1.2	-5.3	-5.3	-1.3	-5.6	-5.6
Finance, insurance, real estate and leasing	36.9	36.6	0.8	-0.3	-1.6	-1.6	-0.8	-4.2	-4.2
Professional, scientific and technical services	32.5	32.0	0.7	-0.5	-2.1	-2.1	-1.5	-6.2	-6.2
Business, building and other support services	25.5	25.7	0.7	0.2	3.0	3.0	0.8	13.2	13.2
Educational services	18.9	19.6	0.8	0.7	2.9	2.9	3.7	17.4	17.4
Health care and social assistance	52.9	52.3	1.0	-0.6	2.2	2.2	-1.1	4.4	4.4
Information, culture and recreation	102.8	102.1	1.1	-0.7	1.6	1.6	-0.7	1.6	1.6
Accommodation and food services	23.3	22.4	0.8	-0.9	1.4	1.4	-3.9	6.7	6.7
Other services	41.3	41.4	1.0	0.1	-0.1	-0.1	0.2	-0.2	-0.2
Public administration	28.4	28.8	0.7	0.4	-0.9	-0.9	1.4	-3.0	-3.0
	34.8	33.8	0.8	-1.0	-1.4	-1.4	-2.9	-4.0	-4.0

1. Average standard error of change in two consecutive months (see "Sampling Errors" in Data Quality for further explanations).

2. Also referred to as Natural resources.

Note(s): Related CANSIM Tables 282-0087, 282-0088. The sum of individual categories may not always add to the total due to rounding.

Table 4-8
Selected labour force characteristics (seasonally adjusted) — Saskatchewan

	November 2015	December 2015	S.E.	Change from			Percent change from		
				last month	last December	twelve months ago	last month	last December	twelve months ago
in thousands (except rates)									
Both sexes, 15 years and over									
Population	864.6	865.0	...	0.4	8.0	8.0	0.0	0.9	0.9
Labour force	613.3	608.4	2.6	-4.9	11.1	11.1	-0.8	1.9	1.9
Employment	579.7	575.1	2.7	-4.6	0.1	0.1	-0.8	0.0	0.0
Employment full-time	474.3	479.1	3.7	4.8	-0.6	-0.6	1.0	-0.1	-0.1
Unemployment	33.6	33.3	2.0	-0.3	11.0	11.0	-0.9	49.3	49.3
Participation rate	70.9	70.3	0.3	-0.6	0.6	0.6
Unemployment rate	5.5	5.5	0.3	0.0	1.8	1.8
Employment rate	67.0	66.5	0.3	-0.5	-0.6	-0.6
Part-time rate	18.2	16.7	0.6	-1.5	0.1	0.1
Both sexes, 15 to 24 years									
Population	135.8	135.7	...	-0.1	-2.3	-2.3	-0.1	-1.7	-1.7
Labour force	93.2	91.8	1.5	-1.4	-0.6	-0.6	-1.5	-0.6	-0.6
Employment	84.4	82.7	1.5	-1.7	-3.1	-3.1	-2.0	-3.6	-3.6
Unemployment	8.8	9.1	1.2	0.3	2.4	2.4	3.4	35.8	35.8
Participation rate	68.6	67.6	1.1	-1.0	0.6	0.6
Unemployment rate	9.4	9.9	1.2	0.5	2.6	2.6
Employment rate	62.2	60.9	1.1	-1.3	-1.3	-1.3
Part-time rate	38.4	34.1	2.0	-4.3	-2.8	-2.8
Men, 25 years and over									
Population	364.9	365.2	...	0.3	5.6	5.6	0.1	1.6	1.6
Labour force	284.2	282.7	1.3	-1.5	6.6	6.6	-0.5	2.4	2.4
Employment	268.4	267.8	1.5	-0.6	0.6	0.6	-0.2	0.2	0.2
Unemployment	15.8	14.9	1.1	-0.9	6.0	6.0	-5.7	67.4	67.4
Participation rate	77.9	77.4	0.4	-0.5	0.6	0.6
Unemployment rate	5.6	5.3	0.4	-0.3	2.1	2.1
Employment rate	73.6	73.3	0.4	-0.3	-1.0	-1.0
Part-time rate	7.6	6.8	0.6	-0.8	0.1	0.1
Women, 25 years and over									
Population	363.9	364.2	...	0.3	4.9	4.9	0.1	1.4	1.4
Labour force	235.9	233.9	1.5	-2.0	5.1	5.1	-0.8	2.2	2.2
Employment	226.9	224.6	1.5	-2.3	2.5	2.5	-1.0	1.1	1.1
Unemployment	9.0	9.3	1.0	0.3	2.6	2.6	3.3	38.8	38.8
Participation rate	64.8	64.2	0.4	-0.6	0.5	0.5
Unemployment rate	3.8	4.0	0.4	0.2	1.1	1.1
Employment rate	62.4	61.7	0.4	-0.7	-0.1	-0.1
Part-time rate	23.2	22.1	1.0	-1.1	1.4	1.4
Industry									
Industry	579.7	575.1	2.7	-4.6	0.1	0.1	-0.8	0.0	0.0
Goods-producing sector									
Goods-producing sector	159.8	157.3	1.9	-2.5	-6.4	-6.4	-1.6	-3.9	-3.9
Agriculture	42.7	42.2	1.2	-0.5	-1.6	-1.6	-1.2	-3.7	-3.7
Forestry, fishing, mining, quarrying, oil and gas extraction ²	26.8	26.3	0.8	-0.5	-2.4	-2.4	-1.9	-8.4	-8.4
Utilities	7.0	6.3	0.3	-0.7	-0.1	-0.1	-10.0	-1.6	-1.6
Construction	57.0	55.9	1.2	-1.1	-1.3	-1.3	-1.9	-2.3	-2.3
Manufacturing	26.3	26.6	0.8	0.3	-0.9	-0.9	1.1	-3.3	-3.3
Services-producing sector									
Services-producing sector	419.9	417.8	2.5	-2.1	6.5	6.5	-0.5	1.6	1.6
Trade	86.8	85.5	1.4	-1.3	2.1	2.1	-1.5	2.5	2.5
Transportation and warehousing	28.1	30.0	0.8	1.9	1.4	1.4	6.8	4.9	4.9
Finance, insurance, real estate and leasing	30.8	31.1	0.7	0.3	-0.5	-0.5	1.0	-1.6	-1.6
Professional, scientific and technical services	26.1	26.8	0.8	0.7	0.6	0.6	2.7	2.3	2.3
Business, building and other support services	13.7	13.9	0.7	0.2	-0.1	-0.1	1.5	-0.7	-0.7
Educational services	41.7	41.2	1.1	-0.5	-3.5	-3.5	-1.2	-7.8	-7.8
Health care and social assistance	80.0	78.9	1.0	-1.1	5.3	5.3	-1.4	7.2	7.2
Information, culture and recreation	21.4	20.6	0.7	-0.8	3.7	3.7	-3.7	21.9	21.9
Accommodation and food services	39.5	38.2	1.1	-1.3	1.0	1.0	-3.3	2.7	2.7
Other services	24.9	24.0	0.8	-0.9	-0.2	-0.2	-3.6	-0.8	-0.8
Public administration	26.9	27.5	0.7	0.6	-3.4	-3.4	2.2	-11.0	-11.0

1. Average standard error of change in two consecutive months (see "Sampling Errors" in Data Quality for further explanations).

2. Also referred to as Natural resources.

Note(s): Related CANSIM Tables 282-0087, 282-0088. The sum of individual categories may not always add to the total due to rounding.

Table 4-9
Selected labour force characteristics (seasonally adjusted) — Alberta

	November 2015	December 2015	S.E.	Change from			Percent change from		
				last month	last December	twelve months ago	last month	last December	twelve months ago
in thousands (except rates)									
Both sexes, 15 years and over									
Population	3,377.0	3,379.0	...	2.0	61.8	61.8	0.1	1.9	1.9
Labour force	2,461.0	2,457.0	10.0	-4.0	43.6	43.6	-0.2	1.8	1.8
Employment	2,289.5	2,285.6	10.2	-3.9	-14.6	-14.6	-0.2	-0.6	-0.6
Employment full-time	1,903.5	1,880.3	14.2	-23.2	-44.0	-44.0	-1.2	-2.3	-2.3
Unemployment	171.5	171.3	7.9	-0.2	58.1	58.1	-0.1	51.3	51.3
Participation rate	72.9	72.7	0.3	-0.2	-0.1	-0.1
Unemployment rate	7.0	7.0	0.3	0.0	2.3	2.3
Employment rate	67.8	67.6	0.3	-0.2	-1.7	-1.7
Part-time rate	16.9	17.7	0.5	0.9	1.4	1.4
Both sexes, 15 to 24 years									
Population	521.8	520.9	...	-0.9	-4.3	-4.3	-0.2	-0.8	-0.8
Labour force	356.0	348.1	5.5	-7.9	-13.3	-13.3	-2.2	-3.7	-3.7
Employment	309.8	309.2	5.4	-0.6	-20.9	-20.9	-0.2	-6.3	-6.3
Unemployment	46.1	38.9	4.5	-7.2	7.7	7.7	-15.6	24.7	24.7
Participation rate	68.2	66.8	1.0	-1.4	-2.0	-2.0
Unemployment rate	12.9	11.2	1.2	-1.7	2.6	2.6
Employment rate	59.4	59.4	1.0	0.0	-3.5	-3.5
Part-time rate	39.8	42.5	1.9	2.7	9.4	9.4
Men, 25 years and over									
Population	1,444.5	1,445.7	...	1.2	33.6	33.6	0.1	2.4	2.4
Labour force	1,164.1	1,165.0	5.2	0.9	33.5	33.5	0.1	3.0	3.0
Employment	1,087.0	1,083.6	5.8	-3.4	-6.8	-6.8	-0.3	-0.6	-0.6
Unemployment	77.1	81.4	4.7	4.3	40.3	40.3	5.6	98.1	98.1
Participation rate	80.6	80.6	0.4	0.0	0.5	0.5
Unemployment rate	6.6	7.0	0.4	0.4	3.4	3.4
Employment rate	75.3	75.0	0.4	-0.3	-2.2	-2.2
Part-time rate	5.7	6.9	0.5	1.2	0.9	0.9
Women, 25 years and over									
Population	1,410.8	1,412.3	...	1.5	32.4	32.4	0.1	2.3	2.3
Labour force	941.0	943.9	5.8	2.9	23.4	23.4	0.3	2.5	2.5
Employment	892.7	892.8	6.0	0.1	13.2	13.2	0.0	1.5	1.5
Unemployment	48.3	51.1	4.1	2.8	10.2	10.2	5.8	24.9	24.9
Participation rate	66.7	66.8	0.4	0.1	0.1	0.1
Unemployment rate	5.1	5.4	0.4	0.3	1.0	1.0
Employment rate	63.3	63.2	0.4	-0.1	-0.5	-0.5
Part-time rate	22.5	22.3	1.0	-0.2	-0.6	-0.6
Industry	2,289.5	2,285.6	10.2	-3.9	-14.6	-14.6	-0.2	-0.6	-0.6
Goods-producing sector									
Agriculture	61.1	58.1	3.2	-3.0	-4.9	-4.9	-4.9	-7.8	-7.8
Forestry, fishing, mining, quarrying, oil and gas extraction ²	152.2	152.0	3.6	-0.2	-20.9	-20.9	-0.1	-12.1	-12.1
Utilities	19.6	19.2	1.0	-0.4	1.1	1.1	-2.0	6.1	6.1
Construction	261.7	256.5	4.8	-5.2	-7.0	-7.0	-2.0	-2.7	-2.7
Manufacturing	139.3	137.9	3.1	-1.4	-7.7	-7.7	-1.0	-5.3	-5.3
Services-producing sector									
Trade	327.3	324.3	4.8	-3.0	12.3	12.3	-0.9	3.9	3.9
Transportation and warehousing	129.3	127.6	3.3	-1.7	-14.6	-14.6	-1.3	-10.3	-10.3
Finance, insurance, real estate and leasing	101.4	100.5	2.6	-0.9	-3.5	-3.5	-0.9	-3.4	-3.4
Professional, scientific and technical services	173.4	180.3	3.3	6.9	-2.1	-2.1	4.0	-1.2	-1.2
Business, building and other support services	84.5	82.4	3.1	-2.1	2.3	2.3	-2.5	2.9	2.9
Educational services	142.5	148.3	3.3	5.8	16.1	16.1	4.1	12.2	12.2
Health care and social assistance	265.6	268.4	3.7	2.8	15.6	15.6	1.1	6.2	6.2
Information, culture and recreation	73.6	83.1	2.8	9.5	11.0	11.0	12.9	15.3	15.3
Accommodation and food services	150.4	138.9	4.1	-11.5	-15.9	-15.9	-7.6	-10.3	-10.3
Other services	109.1	111.1	3.4	2.0	-9.7	-9.7	1.8	-8.0	-8.0
Public administration	98.5	96.9	2.1	-1.6	13.5	13.5	-1.6	16.2	16.2

1. Average standard error of change in two consecutive months (see "Sampling Errors" in Data Quality for further explanations).

2. Also referred to as Natural resources.

Note(s): Related CANSIM Tables 282-0087, 282-0088. The sum of individual categories may not always add to the total due to rounding.

Table 4-10
Selected labour force characteristics (seasonally adjusted) — British Columbia

	November 2015	December 2015	S.E.	Change from			Percent change from		
				last month	last December	twelve months ago	last month	last December	twelve months ago
in thousands (except rates)									
Both sexes, 15 years and over									
Population	3,899.9	3,903.2	...	3.3	54.8	54.8	0.1	1.4	1.4
Labour force	2,498.4	2,504.1	10.1	5.7	87.0	87.0	0.2	3.6	3.6
Employment	2,343.4	2,335.5	10.1	-7.9	51.6	51.6	-0.3	2.3	2.3
Employment full-time	1,838.7	1,832.5	14.9	-6.2	17.4	17.4	-0.3	1.0	1.0
Unemployment	154.9	168.6	8.2	13.7	35.4	35.4	8.8	26.6	26.6
Participation rate	64.1	64.2	0.3	0.1	1.4	1.4
Unemployment rate	6.2	6.7	0.3	0.5	1.2	1.2
Employment rate	60.1	59.8	0.3	-0.3	0.5	0.5
Part-time rate	21.5	21.5	0.6	0.0	1.0	1.0
Both sexes, 15 to 24 years									
Population	584.8	584.7	...	-0.1	4.2	4.2	0.0	0.7	0.7
Labour force	367.6	373.7	5.9	6.1	17.2	17.2	1.7	4.8	4.8
Employment	326.3	327.6	5.6	1.3	9.8	9.8	0.4	3.1	3.1
Unemployment	41.3	46.1	4.9	4.8	7.3	7.3	11.6	18.8	18.8
Participation rate	62.9	63.9	1.0	1.0	2.5	2.5
Unemployment rate	11.2	12.3	1.3	1.1	1.4	1.4
Employment rate	55.8	56.0	1.0	0.2	1.3	1.3
Part-time rate	46.7	42.9	2.2	-3.7	-4.0	-4.0
Men, 25 years and over									
Population	1,617.7	1,619.3	...	1.6	24.3	24.3	0.1	1.5	1.5
Labour force	1,122.7	1,126.5	5.4	3.8	43.3	43.3	0.3	4.0	4.0
Employment	1,059.6	1,056.8	5.7	-2.8	23.2	23.2	-0.3	2.2	2.2
Unemployment	63.1	69.8	4.7	6.7	20.3	20.3	10.6	41.0	41.0
Participation rate	69.4	69.6	0.3	0.2	1.7	1.7
Unemployment rate	5.6	6.2	0.4	0.6	1.6	1.6
Employment rate	65.5	65.3	0.4	-0.2	0.5	0.5
Part-time rate	9.8	9.3	0.7	-0.5	0.5	0.5
Women, 25 years and over									
Population	1,697.4	1,699.1	...	1.7	26.2	26.2	0.1	1.6	1.6
Labour force	1,008.0	1,003.9	5.9	-4.1	26.5	26.5	-0.4	2.7	2.7
Employment	957.5	951.2	5.9	-6.3	18.8	18.8	-0.7	2.0	2.0
Unemployment	50.5	52.7	4.5	2.2	7.8	7.8	4.4	17.4	17.4
Participation rate	59.4	59.1	0.4	-0.3	0.7	0.7
Unemployment rate	5.0	5.2	0.4	0.2	0.6	0.6
Employment rate	56.4	56.0	0.4	-0.4	0.3	0.3
Part-time rate	26.0	27.8	1.0	1.8	3.3	3.3
Industry	2,343.4	2,335.5	10.1	-7.9	51.6	51.6	-0.3	2.3	2.3
Goods-producing sector	471.7	470.9	5.9	-0.8	21.9	21.9	-0.2	4.9	4.9
Agriculture	26.0	21.3	2.4	-4.7	-1.5	-1.5	-18.1	-6.6	-6.6
Forestry, fishing, mining, quarrying, oil and gas extraction ²	47.4	51.3	2.5	3.9	-0.2	-0.2	8.2	-0.4	-0.4
Utilities	14.9	15.4	1.0	0.5	0.7	0.7	3.4	4.8	4.8
Construction	202.5	201.9	4.1	-0.6	5.6	5.6	-0.3	2.9	2.9
Manufacturing	180.8	180.9	3.3	0.1	17.3	17.3	0.1	10.6	10.6
Services-producing sector	1,871.8	1,864.6	9.7	-7.2	29.7	29.7	-0.4	1.6	1.6
Trade	354.4	360.3	5.1	5.9	6.3	6.3	1.7	1.8	1.8
Transportation and warehousing	141.7	140.0	3.3	-1.7	-0.4	-0.4	-1.2	-0.3	-0.3
Finance, insurance, real estate and leasing	120.1	123.4	3.1	3.3	-13.8	-13.8	2.7	-10.1	-10.1
Professional, scientific and technical services	188.3	189.2	3.8	0.9	2.7	2.7	0.5	1.4	1.4
Business, building and other support services	99.0	95.2	3.2	-3.8	8.8	8.8	-3.8	10.2	10.2
Educational services	165.3	167.1	3.7	1.8	2.8	2.8	1.1	1.7	1.7
Health care and social assistance	297.1	295.2	3.8	-1.9	23.9	23.9	-0.6	8.8	8.8
Information, culture and recreation	121.9	119.3	3.6	-2.6	8.7	8.7	-2.1	7.9	7.9
Accommodation and food services	176.9	168.9	4.9	-8.0	-10.9	-10.9	-4.5	-6.1	-6.1
Other services	108.1	108.1	3.0	0.0	-0.1	-0.1	0.0	-0.1	-0.1
Public administration	98.8	98.0	2.2	-0.8	1.7	1.7	-0.8	1.8	1.8

1. Average standard error of change in two consecutive months (see "Sampling Errors" in Data Quality for further explanations).

2. Also referred to as Natural resources.

Note(s): Related CANSIM Tables 282-0087, 282-0088. The sum of individual categories may not always add to the total due to rounding.

Table 5-1

Labour force characteristics by census metropolitan area (seasonally adjusted) — 3 month moving average

	November 2015	December 2015	S.E. ¹	Change from			Percent change from		
				last month	last December	twelve months ago	last month	last December	twelve months ago
in thousands (except rates)									
St. John's, Newfoundland and Labrador									
Population	179.2	179.5	...	0.3	2.1	2.1	0.2	1.2	1.2
Labour force	123.5	122.4	0.9	-1.1	-2.0	-2.0	-0.9	-1.6	-1.6
Employment	115.8	114.6	1.0	-1.2	-2.9	-2.9	-1.0	-2.5	-2.5
Unemployment	7.7	7.8	0.5	0.1	0.8	0.8	1.3	11.4	11.4
Participation rate	68.9	68.2	0.5	-0.7	-1.9	-1.9
Unemployment rate	6.2	6.4	0.4	0.2	0.8	0.8
Employment rate	64.6	63.8	0.5	-0.8	-2.4	-2.4
Halifax, Nova Scotia									
Population	350.3	350.6	...	0.3	4.9	4.9	0.1	1.4	1.4
Labour force	238.9	238.1	1.4	-0.8	-4.8	-4.8	-0.3	-2.0	-2.0
Employment	224.3	223.4	1.4	-0.9	-4.4	-4.4	-0.4	-1.9	-1.9
Unemployment	14.6	14.7	0.7	0.1	-0.3	-0.3	0.7	-2.0	-2.0
Participation rate	68.2	67.9	0.4	-0.3	-2.4	-2.4
Unemployment rate	6.1	6.2	0.3	0.1	0.0	0.0
Employment rate	64.0	63.7	0.4	-0.3	-2.2	-2.2
Moncton, New Brunswick									
Population	124.2	124.3	...	0.1	1.6	1.6	0.1	1.3	1.3
Labour force	84.3	84.5	0.9	0.2	4.2	4.2	0.2	5.2	5.2
Employment	79.4	79.4	0.9	0.0	4.7	4.7	0.0	6.3	6.3
Unemployment	4.9	5.2	0.4	0.3	-0.3	-0.3	6.1	-5.5	-5.5
Participation rate	67.9	68.0	0.7	0.1	2.6	2.6
Unemployment rate	5.8	6.2	0.5	0.4	-0.6	-0.6
Employment rate	63.9	63.9	0.7	0.0	3.0	3.0
Saint John, New Brunswick									
Population	105.4	105.4	...	0.0	-0.2	-0.2	0.0	-0.2	-0.2
Labour force	68.5	67.6	0.8	-0.9	-2.9	-2.9	-1.3	-4.1	-4.1
Employment	63.5	62.4	0.8	-1.1	-2.4	-2.4	-1.7	-3.7	-3.7
Unemployment	5.0	5.2	0.4	0.2	-0.5	-0.5	4.0	-8.8	-8.8
Participation rate	65.0	64.1	0.7	-0.9	-2.7	-2.7
Unemployment rate	7.3	7.7	0.6	0.4	-0.4	-0.4
Employment rate	60.2	59.2	0.8	-1.0	-2.2	-2.2
Saguenay, Quebec									
Population	135.1	135.1	...	0.0	-0.2	-0.2	0.0	-0.1	-0.1
Labour force	81.1	82.2	1.0	1.1	-5.5	-5.5	1.4	-6.3	-6.3
Employment	74.9	76.0	1.0	1.1	-3.1	-3.1	1.5	-3.9	-3.9
Unemployment	6.2	6.2	0.4	0.0	-2.4	-2.4	0.0	-27.9	-27.9
Participation rate	60.0	60.8	0.8	0.8	-4.0	-4.0
Unemployment rate	7.6	7.5	0.5	-0.1	-2.3	-2.3
Employment rate	55.4	56.3	0.7	0.9	-2.2	-2.2
Québec, Quebec									
Population	671.7	672.1	...	0.4	4.8	4.8	0.1	0.7	0.7
Labour force	468.5	468.6	4.2	0.1	18.6	18.6	0.0	4.1	4.1
Employment	445.9	445.7	4.3	-0.2	20.1	20.1	0.0	4.7	4.7
Unemployment	22.6	23.0	1.6	0.4	-1.4	-1.4	1.8	-5.7	-5.7
Participation rate	69.7	69.7	0.6	0.0	2.3	2.3
Unemployment rate	4.8	4.9	0.4	0.1	-0.5	-0.5
Employment rate	66.4	66.3	0.6	-0.1	2.5	2.5
Sherbrooke, Quebec									
Population	179.9	180.1	...	0.2	1.9	1.9	0.1	1.1	1.1
Labour force	112.9	112.8	1.2	-0.1	2.6	2.6	-0.1	2.4	2.4
Employment	105.8	105.4	1.2	-0.4	3.3	3.3	-0.4	3.2	3.2
Unemployment	7.1	7.5	0.5	0.4	-0.7	-0.7	5.6	-8.5	-8.5
Participation rate	62.8	62.6	0.7	-0.2	0.8	0.8
Unemployment rate	6.3	6.6	0.4	0.3	-0.8	-0.8
Employment rate	58.8	58.5	0.7	-0.3	1.2	1.2

See notes at the end of the table.

Table 5-1 – continued

Labour force characteristics by census metropolitan area (seasonally adjusted) — 3 month moving average

	November 2015	December 2015	S.E. ¹	Change from			Percent change from		
				last month	last December	twelve months ago	last month	last December	twelve months ago
in thousands (except rates)									
Trois-Rivières, Quebec									
Population	132.8	132.9	...	0.1	0.3	0.3	0.1	0.2	0.2
Labour force	80.9	80.8	1.0	-0.1	4.8	4.8	-0.1	6.3	6.3
Employment	75.3	74.9	1.0	-0.4	3.8	3.8	-0.5	5.3	5.3
Unemployment	5.6	5.9	0.4	0.3	0.9	0.9	5.4	18.0	18.0
Participation rate	60.9	60.8	0.7	-0.1	3.5	3.5
Unemployment rate	6.9	7.3	0.5	0.4	0.7	0.7
Employment rate	56.7	56.4	0.7	-0.3	2.8	2.8
Montréal, Quebec									
Population	3,364.0	3,366.4	...	2.4	30.9	30.9	0.1	0.9	0.9
Labour force	2,227.9	2,231.8	8.4	3.9	27.0	27.0	0.2	1.2	1.2
Employment	2,037.1	2,038.4	8.6	1.3	11.8	11.8	0.1	0.6	0.6
Unemployment	190.8	193.4	4.9	2.6	15.2	15.2	1.4	8.5	8.5
Participation rate	66.2	66.3	0.3	0.1	0.2	0.2
Unemployment rate	8.6	8.7	0.2	0.1	0.6	0.6
Employment rate	60.6	60.6	0.3	0.0	-0.2	-0.2
Ottawa-Gatineau, Ontario/Quebec									
Population	1,101.4	1,102.4	...	1.0	12.1	12.1	0.1	1.1	1.1
Labour force	761.0	759.7	4.6	-1.3	-0.1	-0.1	-0.2	0.0	0.0
Employment	712.8	712.5	4.8	-0.3	0.0	0.0	0.0	0.0	0.0
Unemployment	48.2	47.2	2.1	-1.0	-0.1	-0.1	-2.1	-0.2	-0.2
Participation rate	69.1	68.9	0.4	-0.2	-0.8	-0.8
Unemployment rate	6.3	6.2	0.3	-0.1	0.0	0.0
Employment rate	64.7	64.6	0.4	-0.1	-0.7	-0.7
Ottawa-Gatineau, Quebec part, Ontario/Quebec									
Population	273.0	273.1	...	0.1	1.6	1.6	0.0	0.6	0.6
Labour force	195.5	193.2	1.6	-2.3	8.2	8.2	-1.2	4.4	4.4
Employment	182.9	181.5	1.6	-1.4	9.7	9.7	-0.8	5.6	5.6
Unemployment	12.6	11.7	0.8	-0.9	-1.5	-1.5	-7.1	-11.4	-11.4
Participation rate	71.6	70.7	0.6	-0.9	2.6	2.6
Unemployment rate	6.4	6.1	0.4	-0.3	-1.0	-1.0
Employment rate	67.0	66.5	0.6	-0.5	3.2	3.2
Ottawa-Gatineau, Ontario part, Ontario/Quebec									
Population	828.4	829.3	...	0.9	10.5	10.5	0.1	1.3	1.3
Labour force	565.5	566.4	4.3	0.9	-8.4	-8.4	0.2	-1.5	-1.5
Employment	529.9	530.9	4.5	1.0	-9.8	-9.8	0.2	-1.8	-1.8
Unemployment	35.6	35.5	1.9	-0.1	1.4	1.4	-0.3	4.1	4.1
Participation rate	68.3	68.3	0.5	0.0	-1.9	-1.9
Unemployment rate	6.3	6.3	0.3	0.0	0.4	0.4
Employment rate	64.0	64.0	0.6	0.0	-2.0	-2.0
Kingston, Ontario									
Population	138.6	138.7	...	0.1	1.1	1.1	0.1	0.8	0.8
Labour force	90.8	90.4	0.9	-0.4	5.2	5.2	-0.4	6.1	6.1
Employment	84.7	84.6	0.9	-0.1	5.2	5.2	-0.1	6.5	6.5
Unemployment	6.1	5.9	0.4	-0.2	0.2	0.2	-3.3	3.5	3.5
Participation rate	65.5	65.2	0.7	-0.3	3.3	3.3
Unemployment rate	6.7	6.5	0.4	-0.2	-0.2	-0.2
Employment rate	61.1	61.0	0.6	-0.1	3.3	3.3
Peterborough, Ontario									
Population	104.5	104.5	...	0.0	0.3	0.3	0.0	0.3	0.3
Labour force	65.4	64.8	1.2	-0.6	-3.3	-3.3	-0.9	-4.8	-4.8
Employment	59.8	59.9	1.2	0.1	-3.5	-3.5	0.2	-5.5	-5.5
Unemployment	5.6	4.9	0.6	-0.7	0.2	0.2	-12.5	4.3	4.3
Participation rate	62.6	62.0	1.1	-0.6	-3.4	-3.4
Unemployment rate	8.6	7.6	0.9	-1.0	0.7	0.7
Employment rate	57.2	57.3	1.2	0.1	-3.5	-3.5

See notes at the end of the table.

Table 5-1 – continued

Labour force characteristics by census metropolitan area (seasonally adjusted) — 3 month moving average

	November 2015	December 2015	S.E. ¹	Change from			Percent change from		
				last month	last December	twelve months ago	last month	last December	twelve months ago
in thousands (except rates)									
Oshawa, Ontario									
Population	323.1	323.5	...	0.4	5.2	5.2	0.1	1.6	1.6
Labour force	212.2	217.7	1.8	5.5	-4.6	-4.6	2.6	-2.1	-2.1
Employment	195.6	202.5	1.9	6.9	-4.5	-4.5	3.5	-2.2	-2.2
Unemployment	16.6	15.2	0.9	-1.4	-0.1	-0.1	-8.4	-0.7	-0.7
Participation rate	65.7	67.3	0.6	1.6	-2.5	-2.5
Unemployment rate	7.8	7.0	0.4	-0.8	0.1	0.1
Employment rate	60.5	62.6	0.6	2.1	-2.4	-2.4
Toronto, Ontario									
Population	5,132.9	5,139.6	...	6.7	86.4	86.4	0.1	1.7	1.7
Labour force	3,448.4	3,459.0	11.5	10.6	120.4	120.4	0.3	3.6	3.6
Employment	3,206.6	3,216.8	11.6	10.2	144.2	144.2	0.3	4.7	4.7
Unemployment	241.9	242.2	6.5	0.3	-23.8	-23.8	0.1	-8.9	-8.9
Participation rate	67.2	67.3	0.2	0.1	1.2	1.2
Unemployment rate	7.0	7.0	0.2	0.0	-1.0	-1.0
Employment rate	62.5	62.6	0.2	0.1	1.8	1.8
Hamilton, Ontario									
Population	644.9	645.4	...	0.5	6.7	6.7	0.1	1.0	1.0
Labour force	411.5	409.9	3.6	-1.6	7.8	7.8	-0.4	1.9	1.9
Employment	386.9	385.7	3.7	-1.2	5.3	5.3	-0.3	1.4	1.4
Unemployment	24.6	24.3	1.4	-0.3	2.6	2.6	-1.2	12.0	12.0
Participation rate	63.8	63.5	0.6	-0.3	0.5	0.5
Unemployment rate	6.0	5.9	0.3	-0.1	0.5	0.5
Employment rate	60.0	59.8	0.6	-0.2	0.2	0.2
St. Catharines-Niagara, Ontario									
Population	343.7	343.8	...	0.1	1.2	1.2	0.0	0.4	0.4
Labour force	224.9	225.4	2.1	0.5	13.7	13.7	0.2	6.5	6.5
Employment	207.4	207.4	2.1	0.0	10.5	10.5	0.0	5.3	5.3
Unemployment	17.5	18.0	0.8	0.5	3.2	3.2	2.9	21.6	21.6
Participation rate	65.4	65.6	0.6	0.2	3.8	3.8
Unemployment rate	7.8	8.0	0.4	0.2	1.0	1.0
Employment rate	60.3	60.3	0.6	0.0	2.8	2.8
Kitchener-Cambridge-Waterloo, Ontario									
Population	422.9	423.3	...	0.4	4.1	4.1	0.1	1.0	1.0
Labour force	298.3	298.4	2.8	0.1	-9.3	-9.3	0.0	-3.0	-3.0
Employment	280.6	279.4	2.9	-1.2	-10.6	-10.6	-0.4	-3.7	-3.7
Unemployment	17.7	19.0	1.0	1.3	1.2	1.2	7.3	6.7	6.7
Participation rate	70.5	70.5	0.7	0.0	-2.9	-2.9
Unemployment rate	5.9	6.4	0.3	0.5	0.6	0.6
Employment rate	66.4	66.0	0.7	-0.4	-3.2	-3.2
Brantford, Ontario									
Population	112.2	112.2	...	0.0	0.9	0.9	0.0	0.8	0.8
Labour force	71.0	71.8	0.9	0.8	-2.4	-2.4	1.1	-3.2	-3.2
Employment	67.2	68.3	0.9	1.1	-1.3	-1.3	1.6	-1.9	-1.9
Unemployment	3.8	3.5	0.4	-0.3	-1.1	-1.1	-7.9	-23.9	-23.9
Participation rate	63.3	64.0	0.8	0.7	-2.7	-2.7
Unemployment rate	5.4	4.9	0.5	-0.5	-1.3	-1.3
Employment rate	59.9	60.9	0.8	1.0	-1.6	-1.6
Guelph, Ontario									
Population	129.2	129.3	...	0.1	1.5	1.5	0.1	1.2	1.2
Labour force	95.9	97.2	1.2	1.3	7.3	7.3	1.4	8.1	8.1
Employment	91.9	93.1	1.2	1.2	7.8	7.8	1.3	9.1	9.1
Unemployment	4.0	4.1	0.4	0.1	-0.5	-0.5	2.5	-10.9	-10.9
Participation rate	74.2	75.2	0.9	1.0	4.9	4.9
Unemployment rate	4.2	4.2	0.5	0.0	-0.9	-0.9
Employment rate	71.1	72.0	0.9	0.9	5.3	5.3

See notes at the end of the table.

Table 5-1 – continued

Labour force characteristics by census metropolitan area (seasonally adjusted) — 3 month moving average

	November 2015	December 2015	S.E. ¹	Change from			Percent change from		
				last month	last December	twelve months ago	last month	last December	twelve months ago
in thousands (except rates)									
London, Ontario									
Population	423.5	423.7	...	0.2	3.7	3.7	0.0	0.9	0.9
Labour force	272.7	272.3	2.4	-0.4	6.6	6.6	-0.1	2.5	2.5
Employment	254.1	255.5	2.4	1.4	9.3	9.3	0.6	3.8	3.8
Unemployment	18.6	16.8	1.1	-1.8	-2.7	-2.7	-9.7	-13.8	-13.8
Participation rate	64.4	64.3	0.6	-0.1	1.0	1.0
Unemployment rate	6.8	6.2	0.4	-0.6	-1.1	-1.1
Employment rate	60.0	60.3	0.6	0.3	1.7	1.7
Windsor, Ontario									
Population	280.4	280.5	...	0.1	1.9	1.9	0.0	0.7	0.7
Labour force	170.6	169.5	1.8	-1.1	-5.7	-5.7	-0.6	-3.3	-3.3
Employment	153.6	153.1	1.8	-0.5	-5.0	-5.0	-0.3	-3.2	-3.2
Unemployment	17.0	16.4	1.0	-0.6	-0.6	-0.6	-3.5	-3.5	-3.5
Participation rate	60.8	60.4	0.6	-0.4	-2.5	-2.5
Unemployment rate	10.0	9.7	0.6	-0.3	0.0	0.0
Employment rate	54.8	54.6	0.6	-0.2	-2.1	-2.1
Barrie, Ontario									
Population	168.0	168.2	...	0.2	2.6	2.6	0.1	1.6	1.6
Labour force	110.9	111.7	1.4	0.8	-9.7	-9.7	0.7	-8.0	-8.0
Employment	104.1	104.6	1.5	0.5	-10.5	-10.5	0.5	-9.1	-9.1
Unemployment	6.8	7.2	0.7	0.4	1.0	1.0	5.9	16.1	16.1
Participation rate	66.0	66.4	0.9	0.4	-6.9	-6.9
Unemployment rate	6.1	6.4	0.6	0.3	1.3	1.3
Employment rate	62.0	62.2	0.9	0.2	-7.3	-7.3
Greater Sudbury, Ontario									
Population	140.0	140.1	...	0.1	0.3	0.3	0.1	0.2	0.2
Labour force	87.4	86.6	0.8	-0.8	-3.2	-3.2	-0.9	-3.6	-3.6
Employment	80.2	79.3	0.9	-0.9	-5.0	-5.0	-1.1	-5.9	-5.9
Unemployment	7.2	7.3	0.4	0.1	1.9	1.9	1.4	35.2	35.2
Participation rate	62.4	61.8	0.6	-0.6	-2.4	-2.4
Unemployment rate	8.2	8.4	0.4	0.2	2.4	2.4
Employment rate	57.3	56.6	0.6	-0.7	-3.7	-3.7
Thunder Bay, Ontario									
Population	104.6	104.6	...	0.0	-0.1	-0.1	0.0	-0.1	-0.1
Labour force	62.2	63.2	0.7	1.0	-0.8	-0.8	1.6	-1.2	-1.2
Employment	58.9	59.6	0.7	0.7	-0.9	-0.9	1.2	-1.5	-1.5
Unemployment	3.3	3.6	0.3	0.3	0.0	0.0	9.1	0.0	0.0
Participation rate	59.5	60.4	0.7	0.9	-0.7	-0.7
Unemployment rate	5.3	5.7	0.4	0.4	0.1	0.1
Employment rate	56.3	57.0	0.7	0.7	-0.8	-0.8
Winnipeg, Manitoba									
Population	655.9	656.6	...	0.7	9.5	9.5	0.1	1.5	1.5
Labour force	452.3	452.8	1.4	0.5	12.4	12.4	0.1	2.8	2.8
Employment	426.5	425.2	1.4	-1.3	10.1	10.1	-0.3	2.4	2.4
Unemployment	25.8	27.7	0.8	1.9	2.4	2.4	7.4	9.5	9.5
Participation rate	69.0	69.0	0.2	0.0	0.9	0.9
Unemployment rate	5.7	6.1	0.2	0.4	0.4	0.4
Employment rate	65.0	64.8	0.2	-0.2	0.7	0.7
Regina, Saskatchewan									
Population	199.5	199.8	...	0.3	3.9	3.9	0.2	2.0	2.0
Labour force	144.3	145.4	1.0	1.1	2.4	2.4	0.8	1.7	1.7
Employment	138.5	139.4	1.0	0.9	1.5	1.5	0.6	1.1	1.1
Unemployment	5.8	6.0	0.4	0.2	0.9	0.9	3.4	17.6	17.6
Participation rate	72.3	72.8	0.5	0.5	-0.2	-0.2
Unemployment rate	4.0	4.1	0.3	0.1	0.5	0.5
Employment rate	69.4	69.8	0.5	0.4	-0.6	-0.6

See notes at the end of the table.

Table 5-1 – continued

Labour force characteristics by census metropolitan area (seasonally adjusted) — 3 month moving average

	November 2015	December 2015	S.E. ¹	Change from			Percent change from		
				last month	last December	twelve months ago	last month	last December	twelve months ago
in thousands (except rates)									
Saskatoon, Saskatchewan									
Population	254.3	254.8	...	0.5	6.5	6.5	0.2	2.6	2.6
Labour force	184.5	183.5	1.2	-1.0	4.8	4.8	-0.5	2.7	2.7
Employment	173.2	171.7	1.3	-1.5	0.0	0.0	-0.9	0.0	0.0
Unemployment	11.3	11.8	0.5	0.5	4.8	4.8	4.4	68.6	68.6
Participation rate	72.6	72.0	0.5	-0.6	0.0	0.0
Unemployment rate	6.1	6.4	0.3	0.3	2.5	2.5
Employment rate	68.1	67.4	0.5	-0.7	-1.8	-1.8
Calgary, Alberta									
Population	1,190.1	1,191.8	...	1.7	31.1	31.1	0.1	2.7	2.7
Labour force	870.0	863.3	4.5	-6.7	12.9	12.9	-0.8	1.5	1.5
Employment	810.0	803.1	4.5	-6.9	-6.8	-6.8	-0.9	-0.8	-0.8
Unemployment	60.0	60.2	2.2	0.2	19.7	19.7	0.3	48.6	48.6
Participation rate	73.1	72.4	0.4	-0.7	-0.9	-0.9
Unemployment rate	6.9	7.0	0.3	0.1	2.2	2.2
Employment rate	68.1	67.4	0.4	-0.7	-2.4	-2.4
Edmonton, Alberta									
Population	1,109.9	1,111.3	...	1.4	25.3	25.3	0.1	2.3	2.3
Labour force	824.4	827.2	4.5	2.8	41.6	41.6	0.3	5.3	5.3
Employment	774.0	775.7	4.6	1.7	27.9	27.9	0.2	3.7	3.7
Unemployment	50.4	51.6	2.2	1.2	13.8	13.8	2.4	36.5	36.5
Participation rate	74.3	74.4	0.4	0.1	2.1	2.1
Unemployment rate	6.1	6.2	0.3	0.1	1.4	1.4
Employment rate	69.7	69.8	0.4	0.1	0.9	0.9
Kelowna, British Columbia									
Population	153.3	153.5	...	0.2	2.5	2.5	0.1	1.7	1.7
Labour force	95.8	97.0	2.0	1.2	2.5	2.5	1.3	2.6	2.6
Employment	89.9	90.5	2.0	0.6	-0.5	-0.5	0.7	-0.5	-0.5
Unemployment	5.9	6.5	0.6	0.6	3.0	3.0	10.2	85.7	85.7
Participation rate	62.5	63.2	1.3	0.7	0.6	0.6
Unemployment rate	6.2	6.7	0.7	0.5	3.0	3.0
Employment rate	58.6	59.0	1.3	0.4	-1.3	-1.3
Abbotsford-Mission, British Columbia									
Population	145.9	146.0	...	0.1	2.1	2.1	0.1	1.5	1.5
Labour force	97.1	97.8	0.9	0.7	5.5	5.5	0.7	6.0	6.0
Employment	90.1	90.3	0.9	0.2	3.9	3.9	0.2	4.5	4.5
Unemployment	7.0	7.4	0.4	0.4	1.5	1.5	5.7	25.4	25.4
Participation rate	66.6	67.0	0.7	0.4	2.9	2.9
Unemployment rate	7.2	7.6	0.4	0.4	1.2	1.2
Employment rate	61.8	61.8	0.6	0.0	1.8	1.8
Vancouver, British Columbia									
Population	2,143.5	2,146.5	...	3.0	40.0	40.0	0.1	1.9	1.9
Labour force	1,410.3	1,418.4	5.6	8.1	53.8	53.8	0.6	3.9	3.9
Employment	1,328.9	1,337.1	5.7	8.2	53.9	53.9	0.6	4.2	4.2
Unemployment	81.4	81.3	2.9	-0.1	-0.2	-0.2	-0.1	-0.2	-0.2
Participation rate	65.8	66.1	0.3	0.3	1.3	1.3
Unemployment rate	5.8	5.7	0.2	-0.1	-0.3	-0.3
Employment rate	62.0	62.3	0.3	0.3	1.4	1.4
Victoria, British Columbia									
Population	304.7	305.1	...	0.4	3.7	3.7	0.1	1.2	1.2
Labour force	194.3	194.8	1.8	0.5	12.8	12.8	0.3	7.0	7.0
Employment	182.0	183.0	1.8	1.0	10.1	10.1	0.5	5.8	5.8
Unemployment	12.3	11.9	0.7	-0.4	2.8	2.8	-3.3	30.8	30.8
Participation rate	63.8	63.8	0.6	0.0	3.4	3.4
Unemployment rate	6.3	6.1	0.4	-0.2	1.1	1.1
Employment rate	59.7	60.0	0.6	0.3	2.6	2.6

1. Average standard error of change in two consecutive months (see "Sampling Errors" in Data Quality for further explanations).

Note(s): Estimates in this table are based on 2011 Census boundaries. Related CANSIM Table 282-0135. The sum of individual categories may not always add to the total due to rounding.

Table 5-2
Labour force characteristics by census metropolitan area (seasonally adjusted) — Monthly

	November 2015	December 2015	S.E. ¹	Change from			Percent change from		
				last month	last December	twelve months ago	last month	last December	twelve months ago
in thousands (except rates)									
Montréal, Quebec									
Population	3,366.5	3,368.7	...	2.2	31.3	31.3	0.1	0.9	0.9
Labour force	2,226.9	2,246.0	18.1	19.1	46.3	46.3	0.9	2.1	2.1
Employment	2,040.2	2,048.4	17.9	8.2	18.2	18.2	0.4	0.9	0.9
Unemployment	186.7	197.6	12.0	10.9	28.1	28.1	5.8	16.6	16.6
Participation rate	66.1	66.7	0.5	0.6	0.8	0.8
Unemployment rate	8.4	8.8	0.5	0.4	1.1	1.1
Employment rate	60.6	60.8	0.5	0.2	0.0	0.0
Toronto, Ontario									
Population	5,139.9	5,145.8	...	5.9	86.4	86.4	0.1	1.7	1.7
Labour force	3,452.9	3,476.8	24.5	23.9	152.9	152.9	0.7	4.6	4.6
Employment	3,210.3	3,230.2	24.7	19.9	172.9	172.9	0.6	5.7	5.7
Unemployment	242.6	246.6	15.4	4.0	-20.0	-20.0	1.6	-7.5	-7.5
Participation rate	67.2	67.6	0.5	0.4	1.9	1.9
Unemployment rate	7.0	7.1	0.4	0.1	-0.9	-0.9
Employment rate	62.5	62.8	0.5	0.3	2.4	2.4
Vancouver, British Columbia									
Population	2,146.9	2,149.1	...	2.2	39.6	39.6	0.1	1.9	1.9
Labour force	1,414.6	1,420.7	12.1	6.1	58.9	58.9	0.4	4.3	4.3
Employment	1,339.4	1,335.6	12.1	-3.8	51.9	51.9	-0.3	4.0	4.0
Unemployment	75.2	85.1	7.3	9.9	7.1	7.1	13.2	9.1	9.1
Participation rate	65.9	66.1	0.6	0.2	1.5	1.5
Unemployment rate	5.3	6.0	0.5	0.7	0.3	0.3
Employment rate	62.4	62.1	0.6	-0.3	1.2	1.2

1. Average standard error of change in two consecutive months (see "Sampling Errors" in Data Quality for further explanations).

Note(s): Estimates in this table are based on 2011 Census boundaries. Related CANSIM Table 282-0136. The sum of individual categories may not always add to the total due to rounding.

Table 6-1

Labour force characteristics by province and economic region, ¹ unadjusted for seasonality, 3 month moving average ending in December 2014 and December 2015

	Population	Labour force			Participation rate	Unemployment rate	Employment rate
		Labour force	Employment	Unemployment			
	in thousands				percent		
Canada							
2014	29,094.4	19,032.5	17,861.9	1,170.6	65.4	6.2	61.4
2015	29,399.2	19,260.5	18,000.8	1,259.7	65.5	6.5	61.2
Newfoundland and Labrador							
2014	443.3	265.9	236.6	29.3	60.0	11.0	53.4
2015	442.9	267.9	233.4	34.5	60.5	12.9	52.7
Avalon Peninsula [1010]							
2014	232.1	151.9	140.9	11.0	65.4	7.2	60.7
2015	233.4	148.4	135.3	13.1	63.6	8.8	58.0
South Coast-Burin Peninsula and Notre Dame-Central Bonavista Bay [1020, 1040]							
2014	123.6	63.3	51.5	11.8	51.2	18.6	41.7
2015	122.4	66.5	54.4	12.1	54.3	18.2	44.4
West Coast-Northern Peninsula-Labrador [1030]							
2014	87.6	50.7	44.2	6.5	57.9	12.8	50.5
2015	87.1	53.0	43.7	9.3	60.8	17.5	50.2
Prince Edward Island							
2014	120.7	81.4	72.7	8.7	67.4	10.7	60.2
2015	121.1	80.5	72.3	8.2	66.5	10.2	59.7
Nova Scotia							
2014	783.9	490.2	450.4	39.8	62.5	8.1	57.5
2015	786.8	486.7	448.6	38.1	61.9	7.8	57.0
Cape Breton [1210]							
2014	107.7	59.7	50.9	8.7	55.4	14.6	47.3
2015	106.7	54.3	46.3	8.0	50.9	14.7	43.4
North Shore [1220]							
2014	129.2	71.5	64.1	7.4	55.3	10.3	49.6
2015	128.7	79.5	73.2	6.2	61.8	7.8	56.9
Annapolis Valley [1230]							
2014	102.6	58.9	54.9	4.0	57.4	6.8	53.5
2015	102.7	59.9	55.6	4.3	58.3	7.2	54.1
Southern [1240]							
2014	98.7	57.2	51.9	5.3	58.0	9.3	52.6
2015	98.2	54.1	48.4	5.7	55.1	10.5	49.3
Halifax [1250]							
2014	345.7	243.0	228.5	14.4	70.3	5.9	66.1
2015	350.6	239.0	225.1	13.9	68.2	5.8	64.2
New Brunswick							
2014	621.6	386.7	350.1	36.5	62.2	9.4	56.3
2015	621.9	383.1	352.0	31.1	61.6	8.1	56.6
Campbellton-Miramichi [1310]							
2014	129.7	71.4	59.5	11.9	55.1	16.7	45.9
2015	128.8	71.4	62.2	9.3	55.4	13.0	48.3
Moncton-Richibucto [1320]							
2014	175.9	113.6	104.8	8.8	64.6	7.7	59.6
2015	177.1	111.7	104.0	7.7	63.1	6.9	58.7
Saint John-St. Stephen [1330]							
2014	142.5	91.2	84.3	6.8	64.0	7.5	59.2
2015	141.9	88.2	82.0	6.2	62.2	7.0	57.8
Fredericton-Oromocto [1340]							
2014	109.3	70.9	65.6	5.2	64.9	7.3	60.0
2015	110.3	71.9	67.0	4.9	65.2	6.8	60.7

See notes at the end of the table.

Table 6-1 – continued

Labour force characteristics by province and economic region, ¹ unadjusted for seasonality, 3 month moving average ending in December 2014 and December 2015

	Population	Labour force			Participation rate	Unemployment rate	Employment rate
		Labour force	Employment	Unemployment			
	in thousands				percent		
Edmundston-Woodstock [1350]							
2014	64.3	39.6	35.8	3.8	61.6	9.6	55.7
2015	63.8	39.8	36.8	3.0	62.4	7.5	57.7
Quebec							
2014	6,819.4	4,371.4	4,064.7	306.7	64.1	7.0	59.6
2015	6,859.3	4,415.4	4,101.2	314.3	64.4	7.1	59.8
Gaspésie-Îles-de-la-Madeleine [2410]							
2014	78.6	42.1	34.9	7.3	53.6	17.3	44.4
2015	77.8	42.9	36.1	6.8	55.1	15.9	46.4
Bas-Saint-Laurent [2415]							
2014	170.4	90.7	84.4	6.3	53.2	6.9	49.5
2015	169.6	92.6	85.9	6.6	54.6	7.1	50.6
Capitale-Nationale [2420]							
2014	614.4	400.0	379.5	20.5	65.1	5.1	61.8
2015	618.6	422.4	405.3	17.1	68.3	4.0	65.5
Chaudière-Appalaches [2425]							
2014	349.0	232.7	223.0	9.8	66.7	4.2	63.9
2015	349.4	228.7	218.0	10.7	65.5	4.7	62.4
Estrie [2430]							
2014	268.5	169.7	160.5	9.2	63.2	5.4	59.8
2015	269.8	162.7	153.1	9.6	60.3	5.9	56.7
Centre-du-Québec [2433]							
2014	200.0	116.8	107.2	9.5	58.4	8.1	53.6
2015	200.7	119.5	112.5	7.1	59.5	5.9	56.1
Montréal [2435]							
2014	1,245.8	829.4	787.4	42.1	66.6	5.1	63.2
2015	1,253.8	837.9	793.6	44.3	66.8	5.3	63.3
Montréal [2440]							
2014	1,655.8	1,054.1	953.2	100.9	63.7	9.6	57.6
2015	1,670.8	1,077.4	966.8	110.7	64.5	10.3	57.9
Laval [2445]							
2014	349.7	244.4	230.7	13.7	69.9	5.6	66.0
2015	352.9	215.4	195.8	19.7	61.0	9.1	55.5
Lanaudière [2450]							
2014	409.5	272.6	254.5	18.1	66.6	6.6	62.1
2015	412.7	273.2	253.1	20.1	66.2	7.4	61.3
Laurentides [2455]							
2014	489.6	316.7	292.7	24.0	64.7	7.6	59.8
2015	494.6	327.9	311.2	16.7	66.3	5.1	62.9
Outaouais [2460]							
2014	317.2	207.1	191.4	15.7	65.3	7.6	60.3
2015	319.0	217.6	203.8	13.8	68.2	6.3	63.9
Abitibi-Témiscamingue [2465]							
2014	120.4	78.4	72.9	5.4	65.1	6.9	60.5
2015	120.5	74.0	69.6	4.4	61.4	5.9	57.8
Mauricie [2470]							
2014	226.0	121.6	113.7	7.9	53.8	6.5	50.3
2015	225.4	128.3	116.4	11.9	56.9	9.3	51.6
Saguenay-Lac-Saint-Jean [2475]							
2014	232.4	141.0	129.1	12.0	60.7	8.5	55.6
2015	231.8	137.7	128.0	9.7	59.4	7.0	55.2

See notes at the end of the table.

Table 6-1 – continued

Labour force characteristics by province and economic region, ¹ unadjusted for seasonality, 3 month moving average ending in December 2014 and December 2015

	Population	Labour force			Participation rate	Unemployment rate	Employment rate
		Labour force	Employment	Unemployment			
	in thousands				percent		
Côte-Nord and Nord-du-Québec [2480, 2490]							
2014	92.1	54.0	49.6	4.4	58.6	8.1	53.9
2015	91.9	57.2	52.3	4.9	62.2	8.6	56.9
Ontario							
2014	11,311.9	7,372.0	6,903.2	468.8	65.2	6.4	61.0
2015	11,435.4	7,408.8	6,948.2	460.6	64.8	6.2	60.8
Ottawa [3510]							
2014	1,091.3	742.9	701.4	41.6	68.1	5.6	64.3
2015	1,101.1	730.7	690.3	40.4	66.4	5.5	62.7
Kingston-Pembroke [3515]							
2014	376.7	225.2	210.3	15.0	59.8	6.7	55.8
2015	377.5	208.8	197.1	11.6	55.3	5.6	52.2
Muskoka-Kawarthas [3520]							
2014	325.1	201.6	190.5	11.1	62.0	5.5	58.6
2015	326.9	166.2	155.7	10.5	50.8	6.3	47.6
Toronto [3530]							
2014	5,305.4	3,493.0	3,240.4	252.6	65.8	7.2	61.1
2015	5,391.7	3,603.4	3,365.6	237.8	66.8	6.6	62.4
Kitchener-Waterloo-Barrie [3540]							
2014	1,069.1	750.5	714.3	36.1	70.2	4.8	66.8
2015	1,082.2	754.8	718.7	36.1	69.7	4.8	66.4
Hamilton-Niagara Peninsula [3550]							
2014	1,192.6	745.7	704.8	40.9	62.5	5.5	59.1
2015	1,202.6	767.3	720.7	46.6	63.8	6.1	59.9
London [3560]							
2014	551.1	343.8	323.8	20.0	62.4	5.8	58.8
2015	555.1	351.5	332.8	18.7	63.3	5.3	60.0
Windsor-Sarnia [3570]							
2014	524.4	326.5	301.8	24.7	62.3	7.6	57.6
2015	524.5	312.3	287.3	25.1	59.5	8.0	54.8
Stratford-Bruce Peninsula [3580]							
2014	245.8	160.6	153.7	6.9	65.3	4.3	62.5
2015	245.9	145.7	137.4	8.3	59.3	5.7	55.9
Northeast [3590]							
2014	458.2	275.5	261.6	13.9	60.1	5.0	57.1
2015	456.6	263.4	243.6	19.8	57.7	7.5	53.4
Northwest [3595]							
2014	172.2	106.7	100.7	5.9	62.0	5.5	58.5
2015	171.2	104.6	98.9	5.7	61.1	5.4	57.8
Manitoba							
2014	980.6	665.5	634.1	31.4	67.9	4.7	64.7
2015	991.3	672.8	637.4	35.3	67.9	5.2	64.3
Southeast [4610]							
2014	87.9	60.4	57.6	2.8	68.7	4.6	65.5
2015	89.9	61.0	58.1	2.9	67.9	4.8	64.6
South Central and North Central [4620, 4640]							
2014	83.8	59.4	57.8	1.7	70.9	2.9	69.0
2015	84.9	55.8	53.7	2.2	65.7	3.9	63.3
Southwest [4630]							
2014	87.7	60.4	58.7	1.7	68.9	2.8	66.9
2015	88.1	60.8	57.7	3.1	69.0	5.1	65.5

See notes at the end of the table.

Table 6-1 – continued

Labour force characteristics by province and economic region, ¹ unadjusted for seasonality, 3 month moving average ending in December 2014 and December 2015

	Population	Labour force			Participation rate	Unemployment rate	Employment rate
		Labour force	Employment	Unemployment			
		in thousands			percent		
Winnipeg [4650]							
2014	589.7	397.7	376.7	21.1	67.4	5.3	63.9
2015	597.6	407.6	383.8	23.8	68.2	5.8	64.2
Interlake [4660]							
2014	74.4	50.6	48.3	2.2	68.0	4.3	64.9
2015	75.2	50.1	48.3	1.8	66.6	3.6	64.2
Parklands and Northern [4670, 4680]							
2014	57.0	37.0	35.0	2.0	64.9	5.4	61.4
2015	55.7	37.5	35.9	1.6	67.3	4.3	64.5
Saskatchewan							
2014	856.2	593.0	573.9	19.1	69.3	3.2	67.0
2015	864.6	606.5	576.2	30.3	70.1	5.0	66.6
Regina-Moose Mountain [4710]							
2014	260.5	188.8	183.1	5.7	72.5	3.0	70.3
2015	264.5	193.8	186.6	7.2	73.3	3.7	70.5
Swift Current-Moose Jaw [4720]							
2014	82.7	53.5	52.7	0.8	64.7	1.5	63.7
2015	82.4	53.8	52.2	1.6	65.3	3.0	63.3
Saskatoon-Biggar [4730]							
2014	291.5	205.6	198.6	7.0	70.5	3.4	68.1
2015	297.3	211.4	199.6	11.8	71.1	5.6	67.1
Yorkton-Melville [4740]							
2014	63.0	41.1	39.6	1.5	65.2	3.6	62.9
2015	62.3	39.6	37.6	2.1	63.6	5.3	60.4
Prince Albert and Northern [4750, 4760]							
2014	158.6	104.0	99.9	4.1	65.6	3.9	63.0
2015	158.0	107.8	100.1	7.6	68.2	7.1	63.4
Alberta							
2014	3,312.0	2,394.5	2,294.2	100.3	72.3	4.2	69.3
2015	3,376.5	2,444.9	2,288.2	156.7	72.4	6.4	67.8
Lethbridge-Medicine Hat [4810]							
2014	229.5	151.4	147.3	4.1	66.0	2.7	64.2
2015	230.4	158.7	149.6	9.1	68.9	5.7	64.9
Camrose-Drumheller [4820]							
2014	161.7	113.2	109.3	4.0	70.0	3.5	67.6
2015	162.0	109.4	103.8	5.6	67.5	5.1	64.1
Calgary [4830]							
2014	1,245.8	904.4	864.6	39.8	72.6	4.4	69.4
2015	1,277.9	920.1	857.3	62.7	72.0	6.8	67.1
Banff-Jasper-Rocky Mountain House and Athabasca-Grande Prairie-Peace River [4840, 4870]							
2014	276.1	207.2	199.3	7.9	75.0	3.8	72.2
2015	277.4	200.7	185.6	15.1	72.4	7.5	66.9
Red Deer [4850]							
2014	168.1	126.1	120.4	5.7	75.0	4.5	71.6
2015	171.3	120.1	112.7	7.4	70.1	6.2	65.8
Edmonton [4860]							
2014	1,114.9	803.1	768.3	34.8	72.0	4.3	68.9
2015	1,139.4	844.4	795.5	48.9	74.1	5.8	69.8
Wood Buffalo-Cold Lake [4880]							
2014	115.8	89.1	85.0	4.1	76.9	4.6	73.4
2015	118.1	91.5	83.6	7.9	77.5	8.6	70.8

See notes at the end of the table.

Table 6-1 – continued

Labour force characteristics by province and economic region, ¹ unadjusted for seasonality, 3 month moving average ending in December 2014 and December 2015

	Population	Labour force			Participation rate	Unemployment rate	Employment rate
		Labour force	Employment	Unemployment			
	in thousands				percent		
British Columbia							
2014	3,844.8	2,411.9	2,281.9	130.0	62.7	5.4	59.4
2015	3,899.4	2,493.9	2,343.3	150.6	64.0	6.0	60.1
Vancouver Island and Coast [5910]							
2014	651.7	374.1	354.7	19.4	57.4	5.2	54.4
2015	657.5	390.1	365.0	25.0	59.3	6.4	55.5
Lower Mainland-Southwest [5920]							
2014	2,392.5	1,532.4	1,447.5	84.8	64.1	5.5	60.5
2015	2,436.6	1,598.0	1,509.0	89.0	65.6	5.6	61.9
Thompson-Okanagan [5930]							
2014	429.7	259.3	245.4	13.9	60.3	5.4	57.1
2015	433.0	263.5	244.3	19.2	60.9	7.3	56.4
Kootenay [5940]							
2014	122.0	73.4	68.7	4.6	60.2	6.3	56.3
2015	122.1	70.8	65.7	5.1	58.0	7.2	53.8
Cariboo [5950]							
2014	127.0	89.1	84.7	4.4	70.2	4.9	66.7
2015	127.5	84.9	78.8	6.1	66.6	7.2	61.8
North Coast and Nechako [5960, 5970]							
2014	66.5	43.2	41.2	2.0	65.0	4.6	62.0
2015	66.6	43.1	40.1	3.0	64.7	7.0	60.2
Northeast [5980]							
2014	55.3	40.4	39.6	x	73.1	x	71.6
2015	56.0	43.6	40.3	3.3	77.9	7.6	72.0

1. For geographic descriptions of economic regions, refer to the Guide to the Labour Force Survey (catalogue number 71-543-GIE).

Note(s): Estimates in this table are based on 2011 Census boundaries. Related CANSIM table 282-0122.

Table 6-2
Labour force characteristics by territory (seasonally adjusted) - 3 month moving average

	November 2015	December 2015	S.E. ¹	Change from			Percent change from		
				last month	last December	twelve months ago	last month	last December	twelve months ago
in thousands (except rates)									
Yukon ²									
Population	28.3	28.2	...	-0.1	0.3	0.3	-0.4	1.1	1.1
Labour force	21.2	20.6	0.2	-0.6	0.1	0.1	-2.8	0.5	0.5
Employment	20.3	19.5	0.2	-0.8	-0.1	-0.1	-3.9	-0.5	-0.5
Unemployment	0.9	1.1	0.1	0.2	0.1	0.1	22.2	10.0	10.0
Participation rate	74.9	73.0	0.8	-1.9	-0.5	-0.5
Unemployment rate	4.2	5.3	0.6	1.1	0.4	0.4
Employment rate	71.7	69.1	0.8	-2.6	-1.2	-1.2
Northwest Territories ³									
Population	31.9	32.0	...	0.1	-0.3	-0.3	0.3	-0.9	-0.9
Labour force	24.2	24.2	0.3	0.0	0.7	0.7	0.0	3.0	3.0
Employment	21.7	21.8	0.3	0.1	0.0	0.0	0.5	0.0	0.0
Unemployment	2.5	2.4	0.2	-0.1	0.7	0.7	-4.0	41.2	41.2
Participation rate	75.9	75.6	0.8	-0.3	2.8	2.8
Unemployment rate	10.3	9.9	0.7	-0.4	2.7	2.7
Employment rate	68.0	68.1	0.8	0.1	0.6	0.6
Nunavut ⁴									
Population	24.1	24.1	...	0.0	0.7	0.7	0.0	3.0	3.0
Labour force	15.3	15.4	0.2	0.1	1.4	1.4	0.7	10.0	10.0
Employment	12.5	12.8	0.2	0.3	0.6	0.6	2.4	4.9	4.9
Unemployment	2.8	2.7	0.1	-0.1	0.9	0.9	-3.6	50.0	50.0
Participation rate	63.3	64.1	0.8	0.8	4.4	4.4
Unemployment rate	18.1	17.2	0.8	-0.9	4.3	4.3
Employment rate	51.9	53.1	0.7	1.2	1.1	1.1

1. Average standard error of change in two consecutive months (see "Sampling Errors" in Data Quality for further explanations).
2. Since 1992, the Labour force survey (LFS) has been conducted in the Yukon, using an alternative methodology that accommodates some of the operational difficulties inherent to remote locales. These estimates are not included in the national totals. In 1995, the LFS in the Yukon underwent a sample redesign. One result of the redesign was that the covered population increased from 85% to 92%, which is reflected by the sharp increase in the three month moving averages estimates of January, February and March of 1995 for all the level estimates. Users are therefore warned to be cautious when comparing estimates before January 1995 to estimates for January 1995 and forward.
3. Since 2001, the Labour force survey (LFS) has been administered in the Northwest Territories, using an alternative methodology that accommodates some of the operational difficulties inherent to remote locales. These estimates are not included in national totals.
4. Since 2004, the Labour force survey (LFS) has been administered in Nunavut, using an alternative methodology that accommodates some of the operational difficulties inherent to remote locales. These estimates are 3-month moving averages and are not included in national totals. From January 2004 to December 2007, estimates represent about 70% of all Nunavut residents aged 15 and over. Starting in January 2008, coverage was extended to 92%, so that by March 2008, the 3-month moving average is completely based on the extended coverage. Because of the large difference in coverage, users are recommended not to compare estimates prior to January 2008 with data afterwards. The January and February 2008 3-month moving average estimates are based on a mix of both coverages, since the extended coverage was introduced in January 2008. Estimates from January 2004 to December 2007 are based on the 10 largest communities in Nunavut: Iqaluit, Rankin Inlet, Cambridge Bay, Kugluktuk, Baker Lake, Arviat, Pond Inlet, Cape Dorset, Pangnirtung, Igloodlik. Estimates from March 2008 to present cover the above communities as well as: Taloyoak, Gjoa Haven, Kugaaruk, Coral Harbour, Repulse Bay, Qikiqtarjuaq, Arctic Bay, Hall Beach, Clyde River.

Note(s): Related CANSIM table 282-0100.

Table 7

Average usual hours and wages of employees by selected characteristics, Canada, unadjusted for seasonality

	Employees				Full-time			Part-time		
	Number	Average weekly hours	Average weekly wages	Average hourly wages	Number	Average weekly hours	Average weekly wages	Number	Average weekly hours	Average weekly wages
	thousands		current dollars		thousands		current dollars	thousands		current dollars
December 2015										
15 years and over	15,129.3	35.1	931.78	25.55	12,249.9	39.3	1,076.42	2,879.5	17.3	316.45
15 to 24 years	2,277.2	26.4	419.32	14.80	1,091.2	38.8	667.02	1,186.1	15.0	191.44
25 years and over	12,852.1	36.6	1,022.59	27.46	11,158.7	39.3	1,116.46	1,693.4	19.0	404.01
Men	7,591.7	37.6	1,068.90	27.65	6,677.6	40.5	1,175.85	914.1	16.6	287.60
Women	7,537.6	32.6	793.68	23.45	5,572.3	37.9	957.27	1,965.4	17.7	329.87
Union coverage										
Union coverage	4,651.5	35.6	1,057.51	29.26	3,941.9	38.6	1,165.80	709.7	18.8	456.00
No union coverage	10,477.8	34.9	875.97	23.91	8,308.0	39.6	1,034.02	2,169.8	16.8	270.81
Job permanency										
Permanent	13,229.8	36.1	976.64	26.25	11,198.7	39.3	1,092.85	2,031.1	18.4	335.92
Temporary	1,899.5	28.3	619.35	20.68	1,051.2	39.1	901.42	848.3	14.9	269.82
Occupation										
Management	933.4	39.5	1,590.10	40.19	907.1	40.2	1,622.09	26.3	17.4	486.27
Business, finance and administrative	2,826.9	35.5	889.22	24.59	2,431.1	38.3	976.29	395.8	18.3	354.37
Natural and applied sciences	1,266.0	38.6	1,367.73	35.47	1,223.0	39.3	1,395.50	43.0	18.7	578.83
Health	1,111.0	33.2	973.64	29.12	837.2	37.8	1,112.97	273.8	19.4	547.60
Social science, education, government service and religion	1,559.4	33.7	1,090.19	31.84	1,251.4	37.8	1,244.72	308.1	16.9	462.48
Art, culture, recreation and sport	357.2	29.5	771.43	24.18	231.2	38.8	1,063.55	126.1	12.3	235.75
Sales and service	3,950.6	30.2	553.77	17.04	2,444.4	38.3	753.12	1,506.2	17.1	230.25
Trades, transport and equipment operators	2,135.2	40.2	1,049.82	25.82	1,989.1	41.8	1,101.86	146.1	18.5	341.32
Occupations unique to primary industry	237.7	42.4	1,069.02	24.40	214.9	45.3	1,157.61	22.7	15.0	231.04
Occupations unique to processing, manufacturing and utilities	751.9	39.3	833.92	21.00	720.5	40.3	857.52	31.4	17.7	292.85
December 2014										
15 years and over	15,063.7	35.1	905.64	24.84	12,202.1	39.3	1,046.32	2,861.6	17.0	305.74
15 to 24 years	2,327.6	25.9	406.98	14.61	1,091.8	38.6	657.31	1,235.8	14.6	185.83
25 years and over	12,736.1	36.7	996.77	26.71	11,110.3	39.4	1,084.55	1,625.7	18.7	396.89
Men	7,587.8	37.5	1,033.48	26.74	6,664.2	40.5	1,138.70	923.6	16.4	274.28
Women	7,475.8	32.5	775.88	22.91	5,537.9	37.9	935.16	1,937.9	17.2	320.73
Union coverage										
Union coverage	4,584.8	35.7	1,022.30	28.26	3,903.2	38.6	1,120.35	681.6	19.0	460.80
No union coverage	10,478.9	34.8	854.59	23.34	8,298.9	39.6	1,011.50	2,179.9	16.3	257.25
Job permanency										
Permanent	13,142.7	36.0	949.26	25.54	11,135.4	39.3	1,061.02	2,007.3	18.0	329.25
Temporary	1,920.9	28.3	607.19	20.07	1,066.7	39.3	892.85	854.3	14.5	250.50
Occupation										
Management	872.0	39.5	1,591.43	40.33	847.2	40.1	1,623.45	24.8	17.5	497.61
Business, finance and administrative	2,837.0	35.2	858.02	23.81	2,422.6	38.3	948.66	414.4	17.1	328.13
Natural and applied sciences	1,193.8	38.6	1,325.99	34.30	1,160.1	39.2	1,348.55	33.7	18.2	549.20
Health	1,006.7	33.2	957.64	28.53	756.9	37.6	1,097.74	249.8	19.7	533.22
Social science, education, government service and religion	1,556.4	33.9	1,086.71	31.64	1,255.8	37.8	1,228.38	300.5	17.3	494.73
Art, culture, recreation and sport	358.0	30.0	839.96	25.91	242.5	38.4	1,117.10	115.5	12.3	257.97
Sales and service	4,014.0	30.2	541.20	16.66	2,499.1	38.5	734.89	1,514.8	16.7	221.66
Trades, transport and equipment operators	2,194.2	40.2	1,005.70	24.70	2,054.2	41.8	1,052.83	140.0	17.5	314.27
Occupations unique to primary industry	276.4	41.6	1,009.61	23.42	245.5	45.0	1,110.20	30.9	14.3	210.64
Occupations unique to processing, manufacturing and utilities	755.3	39.1	825.09	20.87	718.3	40.2	853.61	37.0	17.7	271.75

Note(s): Related CANSIM Tables 282-0023, 282-0069, 282-0073.

Table 8**Regional unemployment rates used by the Employment Insurance program ¹, seasonally adjusted, 3 month moving average**

Region	Effective from January 10, 2016 to February 6, 2016
	percent
Newfoundland and Labrador	
01. St. John's	6.3
02. Newfoundland and Labrador ²	19.1
Prince Edward Island ³	
65. Charlottetown	7.4
66. Prince Edward Island ⁴	12.9
Nova Scotia	
04. Eastern Nova Scotia	15.1
05. Western Nova Scotia	9.4
06. Halifax	6.2
New Brunswick	
07. Fredericton—Moncton—Saint John	7.3
08. Madawaska—Charlotte	8.6
09. Restigouche—Albert	13.1
Quebec	
10. Gaspésie—Îles-de-la-Madeleine	17.4
11. Québec	5.0
12. Trois-Rivières	7.4
13. South Central Quebec	5.0
14. Sherbrooke	6.9
15. Montérégie	6.3
16. Montréal	8.8
17. Central Quebec	7.4
18. North Western Quebec	8.7
19. Bas-Saint-Laurent—Côte-Nord	9.9
20. Hull	5.9
21. Chicoutimi—Jonquière	7.6
Ontario	
22. Ottawa	6.2
23. Eastern Ontario	6.9
24. Kingston	6.5
25. Central Ontario	7.1
26. Oshawa	7.0
27. Toronto	7.0
28. Hamilton	5.9
29. St. Catharines	8.0
30. London	6.1
31. Niagara	8.2
32. Windsor	9.9
33. Kitchener	6.5
34. Huron	8.2
35. South Central Ontario	5.4
36. Sudbury	8.5
37. Thunder Bay	5.4
38. Northern Ontario	12.7
Manitoba	
39. Winnipeg	6.2
40. Southern Manitoba	6.1
41. Northern Manitoba	34.7
Saskatchewan	
42. Regina	4.1
43. Saskatoon	6.4
44. Southern Saskatchewan	7.4
45. Northern Saskatchewan	19.2
Alberta	
46. Calgary	7.1
47. Edmonton	6.3
48. Northern Alberta	12.4
49. Southern Alberta	8.1

See notes at the end of the table.

Table 8 – continued

Regional unemployment rates used by the Employment Insurance program 1, seasonally adjusted, 3 month moving average

Region	Effective from January 10, 2016 to February 6, 2016
	percent
British Columbia	
50. Southern Interior British Columbia	8.6
51. Abbotsford	7.8
52. Vancouver	5.8
53. Victoria	7.0
54. Southern Coastal British Columbia	8.9
55. Northern British Columbia	11.8
Territories 3, 5	
59. Whitehorse	6.0
60. Yukon 6	7.6
61. Yellowknife	5.4
62. Northwest Territories 7	15.6
63. Iqaluit	5.4
64. Nunavut 8	21.5

1. The boundaries of these regions are determined by Employment and Social Development Canada (ESDC). For geographic descriptions and maps of employment insurance regions, see the ESDC website: <http://srv129.services.gc.ca/eiregions/en/geocont.aspx>.

2. This region excludes St. John's.

3. Prince Edward Island as well as the territories are each comprised of two regions effective October 12, 2014.

4. This region excludes Charlottetown.

5. The monthly regional unemployment rates for EI purposes in the territories are subject to the greater of a seasonally adjusted 3 month moving average or 12 month moving average.

6. This region excludes Whitehorse.

7. This region excludes Yellowknife.

8. This region excludes Iqaluit.

Note(s): All regions are based on the 1996 Census boundaries, with the exception of those in Prince Edward Island and in the territories, which respect the 2011 Census boundaries.

Data quality

Definitions and explanations

The **labour force** is composed of those members of the civilian non-institutional population 15 years of age and over who, during the reference week, were employed or unemployed.

Employed persons are those who, during the reference week:

- (a) did any work at all
- (b) had a job but were not at work

A person is considered to be **full-time** if his/her usual hours at the main job are 30 or more hours per week. When the number of hours worked at the main job is usually less than 30 hours per week then he/she is considered to be **part-time**.

Unemployed persons are those who, during the reference week:

- (a) were without work, had actively looked for work in the past four weeks (ending with reference week), and were available for work;
- (b) had not actively looked for work in the past four weeks but were on temporary layoff and were available for work;
- (c) had not actively looked for work in the past four weeks but had a new job to start in four weeks or less from the reference week, and were available for work.

Persons in the civilian non-institutional population 15 years of age and over who, during the reference week, were neither employed nor unemployed are classified as **not in the labour force**.

The **unemployment rate** represents the number of unemployed persons expressed as a percentage of the labour force (employed and unemployed). The unemployment rate for a particular group (age, sex, etc.) is the number unemployed in that group expressed as a percentage of the labour force for that group.

The **participation rate** represents the labour force expressed as a percentage of the population 15 years of age and over. The participation rate for a particular group (age, sex, etc.) is the labour force in that group expressed as a percentage of the population for that group.

The **employment rate** represents the number of persons employed expressed as a percentage of the population 15 years of age and over. The employment rate for a particular group (age, sex, etc.) is the number employed in that group expressed as a percentage of the population for that group.

The **part-time rate** represents the number of persons employed part-time expressed as a percentage of the employed. The part-time rate for a particular group (age, sex, etc.) is the number employed part-time in that group expressed as a percentage of the employed for that group.

All geographic regions are based on the 2011 Census boundaries.

Seasonal adjustment

Fluctuations in economic time series are caused by seasonal, cyclical and irregular movements. A seasonally adjusted series is one from which seasonal movements have been eliminated. Seasonal movements are defined as those which are caused by regular annual events such as climate, holidays, vacation periods and cycles related to crops, production and retail sales associated with Christmas and Easter. The seasonally adjusted series contains irregular as well as longer-term cyclical fluctuations.

The seasonally adjusted series are revised each year to take into account current data and to generate new forecast factors for the next twelve months. The data are therefore subject to slight revisions in future issues of this publication.

For more information on seasonal adjustment, see *Seasonally adjusted data – Frequently asked questions*.

Sampling variability of estimates

Estimates in this publication are based on the Labour Force Survey, a monthly survey of approximately 56,000 households across Canada. Because the entire population is not surveyed, the estimates are subject to sampling error. While the published estimate is the best available indicator of the real value, changes in the level of any estimates between two months can be the result of a true change or sampling variability. The sampling error can be estimated by calculating the standard error for the published estimate or statistic. These standard errors have been included in the publication tables, in order to assist users in interpreting the data. They are based on 12-month averages and are updated twice a year, in February and August.

Interpretation based on standard error

Approximately two thirds of the time (68%), a change greater than the sampling error indicates a real change. The larger the change compared to the standard error, the better the chance that we are observing a real change, as opposed to a change due to sampling variability. At the 95% confidence level, the change in the estimate must be greater than twice the sampling error in order to ensure that change is real.

Movements in estimates that are smaller than the sampling error are less likely to reflect a real change and more likely to be due to sampling variability. While the above is true for monthly movements, one can have more confidence in a series of consecutive movements in the same direction, even though some of the monthly movements may be smaller than the sampling error.

Interpretation based on confidence intervals

Confidence intervals provide another way of looking at the variability inherent in estimates of sample surveys. To illustrate how to calculate the confidence interval, let us say that one month the published estimate for total employment rose by 16,000 to reach 17,800,000. The associated standard error for the movement estimate is 28,800. The standard error used to interpret the movement estimate indicates that:

- There are approximately two chances in three (68%) that the real value of the movement between the two months falls within the range -12,800 to +44,800 (16,000 + or – one standard error).
- There are approximately nine chances in ten (90%) that the real value of the movement between the two months falls within the range -30,100 to +62,100 (16,000 + or – 1.6 times the standard error).
- There are approximately nineteen chances in twenty (95%) that the real value of the movement between the two months falls within the range -41,600 to +73,600 (16,000 + or – two standard errors).

For more detailed explanations on sampling variability of estimates, and in particular for information on how to assess the variability of level estimates, consult the Data quality section of the *Guide to the Labour Force Survey*, (71-543-G).

Documentation

For more detailed information about the Labour Force Survey, see the following documents:

- Overview of the Labour Force Survey 3701
- Guide to the Labour Force Survey (71-543-G)
- Methodology of the Canadian Labour Force Survey (71-526-X)
- LFS *geographical maps*