

Catalogue no. 71-001-X

Labour Force Information

Friday, April 8, 2016

March 13 to 19, 2016



 Statistics
Canada

Statistique
Canada

Canada

How to obtain more information

For information about this product or the wide range of services and data available from Statistics Canada, visit our website, www.statcan.gc.ca.

You can also contact us by

e-mail at STATCAN.infostats-infostats.STATCAN@canada.ca

telephone, from Monday to Friday, 8:30 a.m. to 4:30 p.m., at the following toll-free numbers:

- Statistical Information Service 1-800-263-1136
- National telecommunications device for the hearing impaired 1-800-363-7629
- Fax line 1-877-287-4369

Depository Services Program

- Inquiries line 1-800-635-7943
- Fax line 1-800-565-7757

To access this product

This product, Catalogue no. 71-001-X, is available free in electronic format. To obtain a single issue, visit our website, www.statcan.gc.ca and browse by "Key resource" > "Publications."

Standards of service to the public

Statistics Canada is committed to serving its clients in a prompt, reliable and courteous manner. To this end, this agency has developed standards of service that its employees observe. To obtain a copy of these service standards, please contact Statistics Canada toll-free at 1-800-263-1136. The service standards are also published at www.statcan.gc.ca under "Contact us" > "Standards of service to the public."

Statistics Canada
Labour Statistics Division
Labour Force Survey Program

Labour Force Information

Friday, April 8, 2016

March 13 to 19, 2016

Published by authority of the Minister responsible for Statistics Canada

© Minister of Industry, 2016

All rights reserved. Use of this publication is governed by the Statistics Canada
Open License Agreement.

<http://www.statcan.gc.ca/reference/licence-eng.html>

April 2016

Catalogue no. 71-001-X

ISSN 1492-5478

Frequency: Monthly

Ottawa

Cette publication est également disponible en français.

Note of appreciation

Canada owes the success of its statistical system to a long-standing partnership between Statistics Canada, the citizens of Canada, its businesses, governments and other institutions. Accurate and timely statistical information could not be produced without their continued cooperation and goodwill.

User information

Symbols

The following standard symbols are used in Statistics Canada publications:

- . not available for any reference period
- .. not available for a specific reference period
- ... not applicable
- 0 true zero or a value rounded to zero
- 0^s value rounded to 0 (zero) where there is a meaningful distinction between true zero and the value that was rounded
- p preliminary
- r revised
- x suppressed to meet the confidentiality requirements of the *Statistics Act*
- E use with caution
- F too unreliable to be published
- * significantly different from reference category ($p < 0.05$)

Special requests (\$)

Custom tabulations can be arranged on an ad hoc or regular basis. This service enables you to specify tables and time series to meet your own requirements. The cost varies according to the request. For more information, contact us toll-free at 1-866-873-8788 or e-mail us at statcan.labour-travail.statcan@canada.ca.

Schedule of LFS releases

Release date	Reference period
February 5, 2016	January 10 to 16, 2016
March 11, 2016	February 14 to 20, 2016
April 8, 2016	March 13 to 19, 2016
May 6, 2016	April 10 to 16 2016
June 10, 2016	May 15 to 21, 2016
July 8, 2016	June 12 to 18, 2016
August 5, 2016	July 10 to 16, 2016
September 9, 2016	August 14 to 20, 2016
October 7, 2016	September 11 to 17, 2016
November 4, 2016	October 9 to 15, 2016
December 2, 2016	November 6 to 12, 2016
January 6, 2017	December 4 to 10, 2016

Table of contents

Highlights	5
Analysis — March 2016	6
Charts	
1. Employment indexes, Canada, seasonally adjusted	10
2. Unemployment, employment, and participation rates, Canada, seasonally adjusted	11
3. Employment indexes by industry, Canada, seasonally adjusted	12
4. Employment indexes by industry, Canada, seasonally adjusted	13
5. Employment indexes by industry, Canada, seasonally adjusted	14
6. Employment indexes by province, Canada, seasonally adjusted	15
7. Employment indexes by province, Canada, seasonally adjusted	16
Related products	17
Statistical tables	
1 Labour force characteristics by age and sex, Canada, seasonally adjusted	28
2 Employment by class of worker and industry, Canada, seasonally adjusted	30
3 Labour force characteristics by province, seasonally adjusted	31
4 Selected labour force characteristics (seasonally adjusted)	33
4-1 Newfoundland and Labrador	33
4-2 Prince Edward Island	34
4-3 Nova Scotia	35
4-4 New Brunswick	36
4-5 Quebec	37
4-6 Ontario	38
4-7 Manitoba	39
4-8 Saskatchewan	40
4-9 Alberta	41
4-10 British Columbia	42
5 Labour force characteristics by census metropolitan area (seasonally adjusted)	43
5-1 3 month moving average	43
5-2 Monthly	48

Table of contents – continued

6	Labour force characteristics	49
6-1	by province and economic region, unadjusted for seasonality, 3 month moving average ending in March 2015 and March 2016	49
6-2	by territory (seasonally adjusted) - 3 month moving average	54
7	Average usual hours and wages of employees by selected characteristics, Canada, unadjusted for seasonality	55
8	Regional unemployment rates used by the Employment Insurance program, seasonally adjusted, 3-month moving average	56
Data quality, concepts and methodology		
	Data quality	58

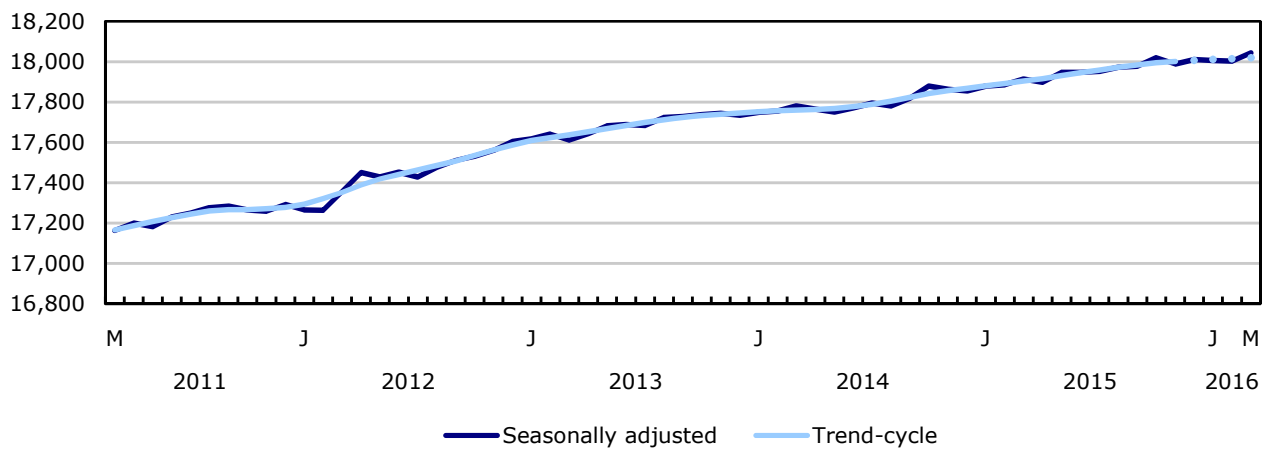
Highlights

After three months of little change, employment increased by 41,000 (+0.2%) in March, lowering the unemployment rate by 0.2 percentage points to 7.1%.

Chart 1
Employment and unemployment rate, Canada, seasonally adjusted

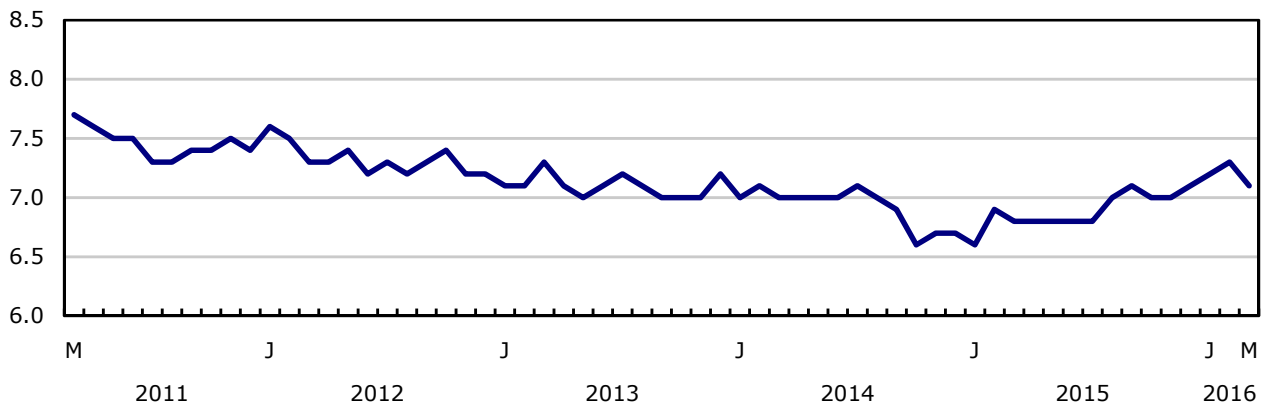
Employment

thousands



Unemployment rate

percent



Analysis — March 2016

After three months of little change, employment increased by 41,000 (+0.2%) in March, lowering the unemployment rate by 0.2 percentage points to 7.1%.

With the gains in March, employment grew by 0.2% in the first quarter (+33,000). This was the fourth consecutive quarter with 0.2% employment growth.

In the 12 months to March, employment increased by 130,000 (+0.7%), the result of growth in full-time work. Over the same period, the number of hours worked increased by 1.2%.

In March, employment increased among men and women aged 25 to 54, while there was little change among the other demographic groups.

There were more people employed in Alberta, Manitoba, Nova Scotia and Saskatchewan. At the same time, employment declined in Prince Edward Island and was little changed in the other provinces.

Employment increased in health care and social assistance, accommodation and food services, professional, scientific and technical services as well as in 'other services'. In contrast, there were fewer people employed in manufacturing.

The number of private sector employees increased in March, while there was little change in the number of public sector employees and self-employed workers.

Adjusted to US concepts, the unemployment rate in Canada was 6.1% in March versus 5.0% in the United States.

More men and women aged 25 to 54 employed

For people aged 25 to 54, employment rose by 40,000 in March, with gains of 22,000 among women and 18,000 among men. However, on a year-over-year basis, employment for the 25-to-54- year-olds was little changed. In March, the unemployment rate for men in this age group declined 0.2 percentage points to 6.7%, while for women it was little changed at 5.5%.

For youths aged 15 to 24, employment held steady in March, and the unemployment rate was 13.4%. On a year-over-year basis, youth employment fell by 60,000 (-2.4%), while their population declined by 44,000 (-1.0%).

Employment among people aged 55 and older was little changed in March, and their unemployment rate was 6.0%. In the 12 months to March, employment for this group increased by 149,000 (+4.2%). Employment growth for men and women aged 55 and older has been driven by growth in their population.

Provincial summary

In March, employment in Alberta rose by 19,000, driven by increases in retail and wholesale trade, and the unemployment rate fell 0.8 percentage points to 7.1%. On a year-over-year basis, employment in the province was little changed, but the unemployment rate was up 1.5 percentage points as more people were looking for work. Despite the employment increase in March, the total number of hours worked decreased by 0.7%, continuing on a downward trend that began in early 2015.

Employment in Manitoba increased by 5,500 in March, and the unemployment rate held steady at 6.0%, as more people participated in the labour market. This unemployment rate was the lowest of all the provinces. Despite more Manitobans working in March, employment in the province was little changed from 12 months earlier.

In Nova Scotia, employment increased by 3,400 in March. As more people participated in the labour market, the unemployment rate held steady at 9.1%. Despite the increase in March, provincial employment has been on a downward trend since the fall of 2015.

In March, employment rose by 2,800 in Saskatchewan; however, the unemployment rate increased 0.3 percentage points to 6.2% as more people searched for work. Compared with 12 months earlier, employment in the province was down slightly. Over the same period, the unemployment rate was up 1.7 percentage points — the result of more people looking for work.

Employment in Prince Edward Island declined by 700, and the unemployment rate was 11.0%. In the 12 months to March, employment in the province decreased by 2,300 (-3.1%).

Employment in British Columbia was little changed in March; however, on a year-over-year basis, gains totalled 72,000 or 3.2% — still the fastest growth rate of all the provinces. In March, the unemployment rate was little changed at 6.5%, though it was up 0.6 percentage points compared with a year earlier as more people searched for work.

In Ontario, employment was also little changed in March, and the unemployment rate stayed at 6.8%. On a year-over-year basis, employment in the province increased by 86,000 or 1.2%, the second highest rate of growth among the provinces. All of the gains were in full-time work.

There was little change in employment in Quebec on both a monthly and a year-over-year basis. The unemployment rate was 7.5% in March.

Industry perspective

In March, employment in health care and social assistance increased by 25,000, bringing total gains to 77,000 (+3.4%) on a year-over-year basis.

There were also more workers in accommodation and food services (+18,000). In the 12 months to March, however, the number of people employed in this industry was down 27,000 (-2.2%).

There were 12,000 more people working in professional, scientific and technical services in March. Compared with the same month a year earlier, gains for the industry totalled 52,000 or 3.8%, the fastest year-over-year growth rate of all industries.

In 'other services', such as civic and professional organizations, as well as repair and maintenance, employment increased by 9,900. In the 12 months to March, however, the number of people working in this industry was little changed.

In contrast, employment in manufacturing decreased by 32,000 in March, with losses in Ontario, Quebec, Alberta and British Columbia. On a year-over-year basis, employment in the industry was little changed, as gains in Ontario and Nova Scotia were offset by losses in Alberta.

The number of employees in the private sector increased by 65,000 in March, bringing year-over-year gains to 109,000 (+0.9%). Both on a monthly and year-over-year basis, there was little change in the number of public sector employees as well as in the number of self-employed workers.

Canada–United States comparison

Adjusted to US concepts, the unemployment rate in Canada was 6.1% in March versus 5.0% in the United States. Compared with March 2015, the unemployment rate increased by 0.2 percentage points in Canada, while it declined by 0.5 percentage points in the United States.

The labour force participation rate in Canada (adjusted to US concepts) was 65.8% in March, and 63.0% in the United States. Compared with March 2015, the labour force participation rate in Canada edged down 0.1 percentage points, while in the United States it increased by 0.3 percentage points.

In March, the US-adjusted employment rate in Canada stood at 61.8%, compared with 59.9% in the United States. On a year-over-year basis, the employment rate in Canada declined by 0.2 percentage points, while in the United States it increased by 0.6 percentage points.

For further information on Canada-US comparisons, see *Measuring Employment and Unemployment in Canada and the United States – A comparison*.

Quarterly update for the territories

The Labour Force Survey also collects labour market information on the territories. This information is produced monthly in the form of three-month moving averages.

In the first quarter of 2016, employment in Yukon was little changed compared with the fourth quarter of 2015. Over the same period, the unemployment rate was also little changed at 5.4%.

Employment in the Northwest Territories increased by 1,000 in the first quarter of 2016 compared with the previous quarter. Over the same period, the unemployment rate fell 2.6 percentage points to 7.3%.

Employment in Nunavut rose by 300 in the first quarter of 2016 compared with the last quarter of 2015. Over the same period, the unemployment rate was little changed at 17.4% as more people participated in the labour market.

Note to readers

The Labour Force Survey (LFS) estimates for March are for the week of March 13 to 19.

The LFS estimates are based on a sample and are therefore subject to sampling variability. As a result, monthly estimates will show more variability than trends observed over longer time periods. For more information, see *Interpreting Monthly Changes in Employment from the Labour Force Survey*. Estimates for smaller geographic areas or industries also have more variability. For an explanation of sampling variability of estimates and how to use standard errors to assess this variability, consult the "Data quality" section of the publication *Labour Force Information (71-001-X)*.

This analysis focuses on differences between estimates that are statistically significant at the 68% confidence level.

The LFS estimates are the first in a series of labour market indicators released by Statistics Canada, including programs such as the Survey of Payroll Employment, Earnings and Hours (SEPH), Employment Insurance Statistics, and the Job Vacancy and Wage Survey (JVWS). To better understand the conceptual differences between employment measures from the LFS and SEPH, refer to section 8 of the *Guide to the Labour Force Survey*.

The **employment rate** is the number of employed persons as a percentage of the population 15 years of age and over. The rate for a particular group (for example, youths aged 15 to 24) is the number employed in that group as a percentage of the population for that group.

The **unemployment rate** is the number of unemployed as a percentage of the labour force (employed and unemployed).

The **participation rate** is the number of employed and unemployed as a percentage of the population.

Seasonal adjustment

Unless otherwise stated, this release presents seasonally adjusted estimates, which facilitates comparisons by removing the effects of seasonal variations. For more information on seasonal adjustment, see *Seasonally adjusted data – Frequently asked questions*.

Chart 1 shows trend-cycle data on employment. These data represent a smoothed version of the seasonally adjusted time series, which provide information on longer-term movements, including changes in direction underlying the series. These data are available in CANSIM table 282-0087 for the Canada-level employment series. For more information, see the *StatCan Blog* and *Trend-cycle estimates – Frequently asked questions*.

Next release

The next release of the LFS will be on May 6.

Chart 1
Employment indexes, Canada, seasonally adjusted

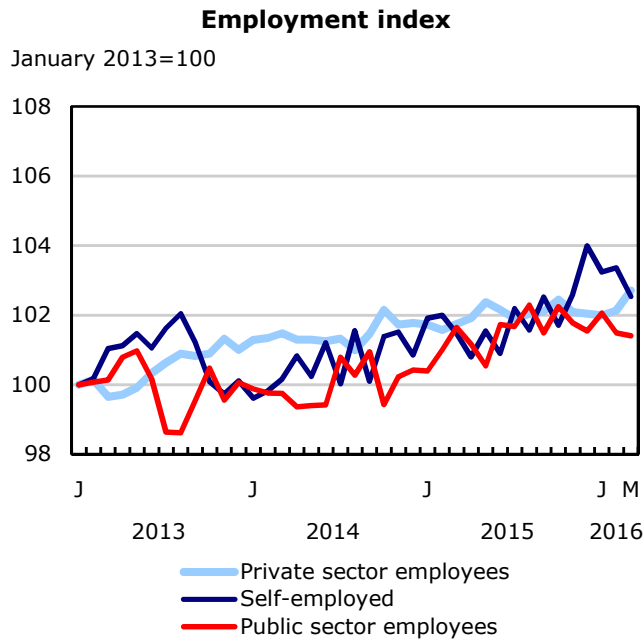
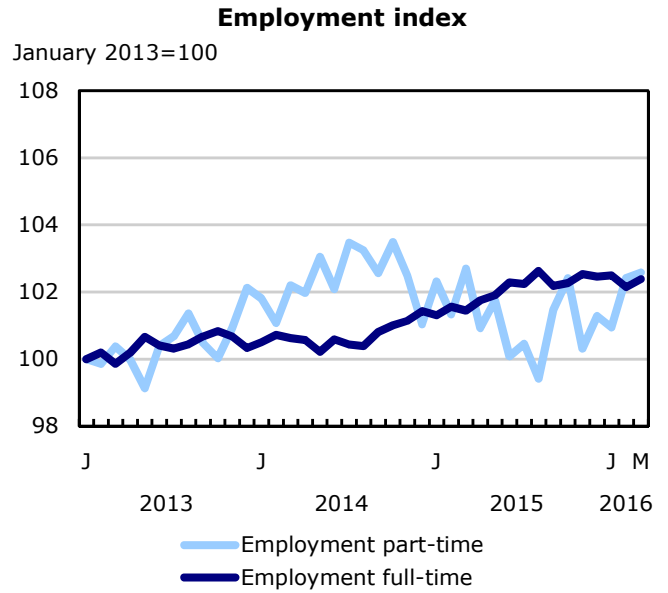
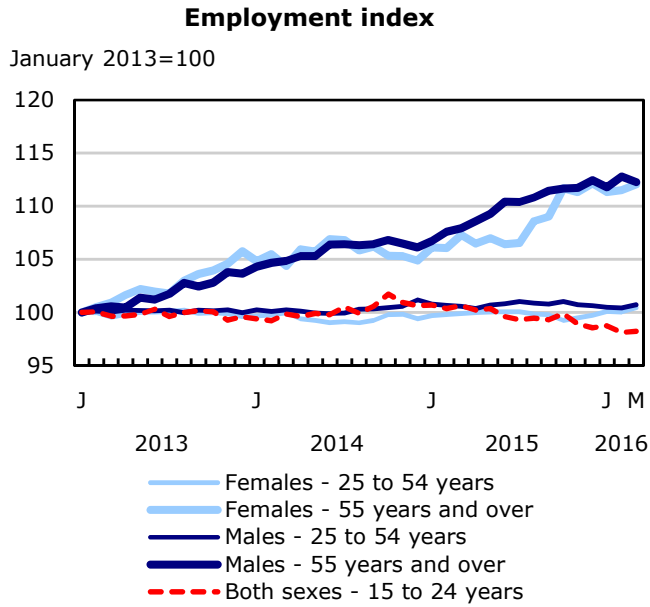


Chart 2
Unemployment, employment, and participation rates, Canada, seasonally adjusted

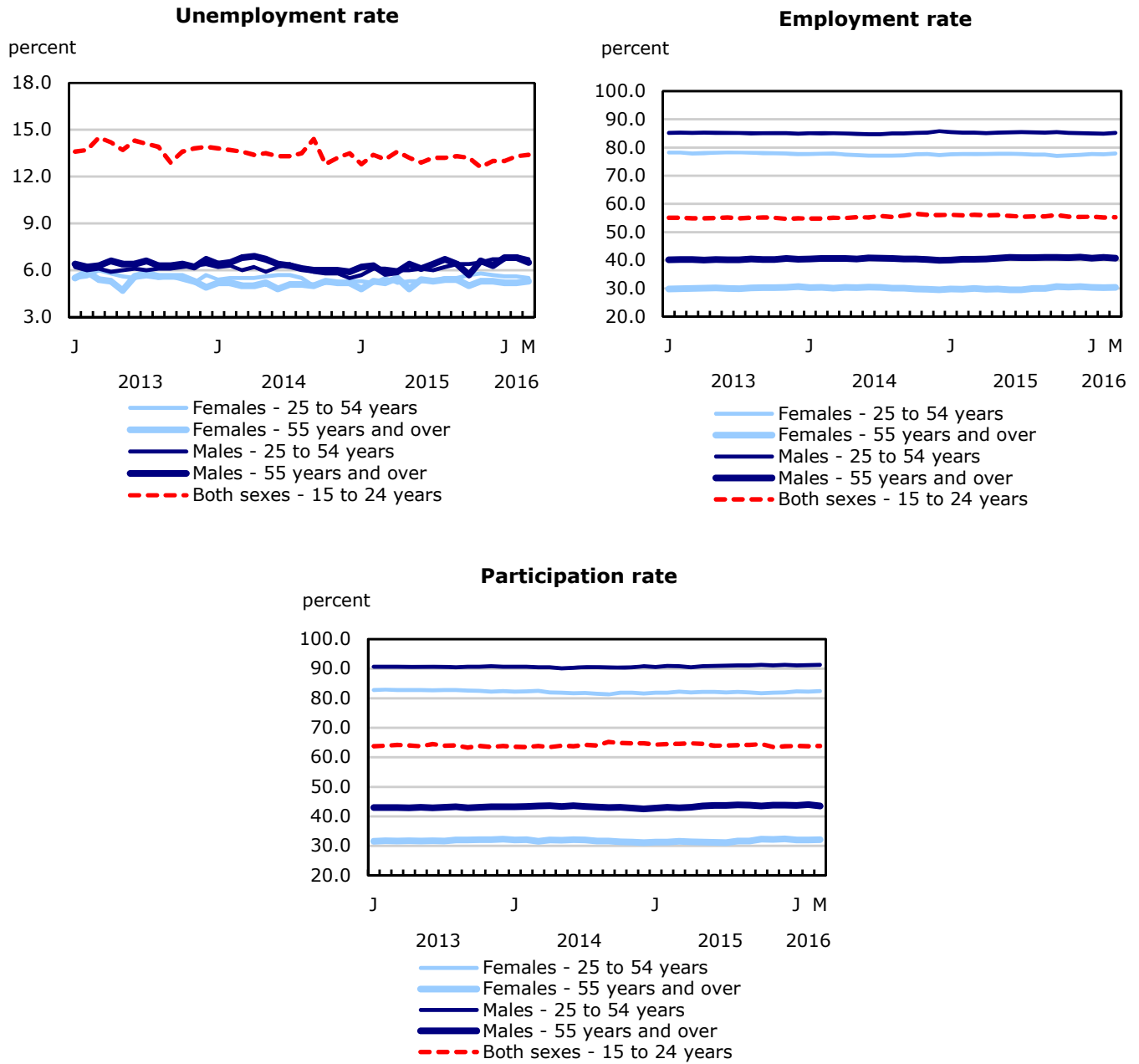


Chart 3
Employment indexes by industry, Canada, seasonally adjusted

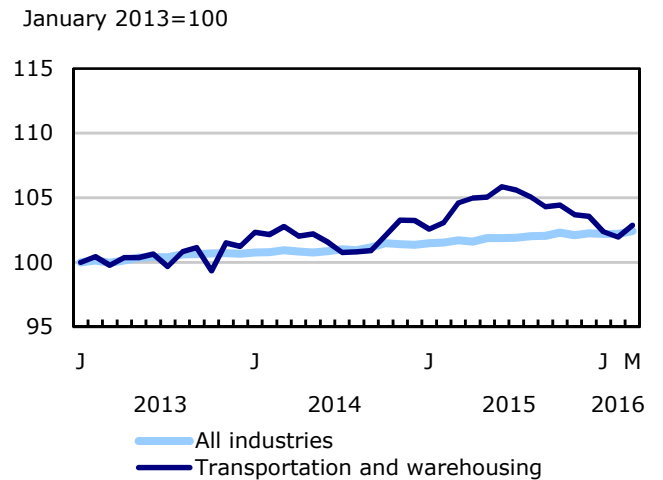
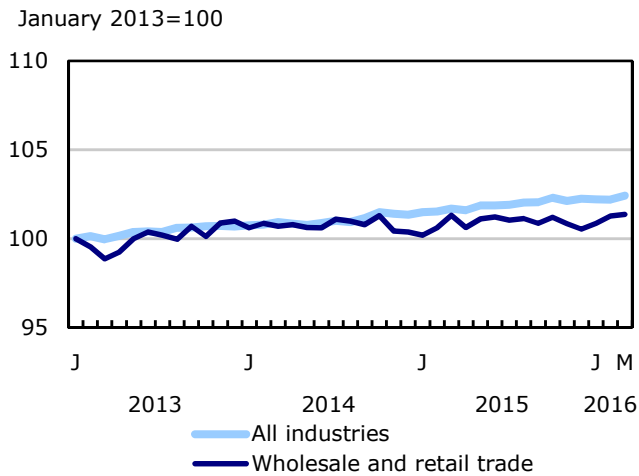
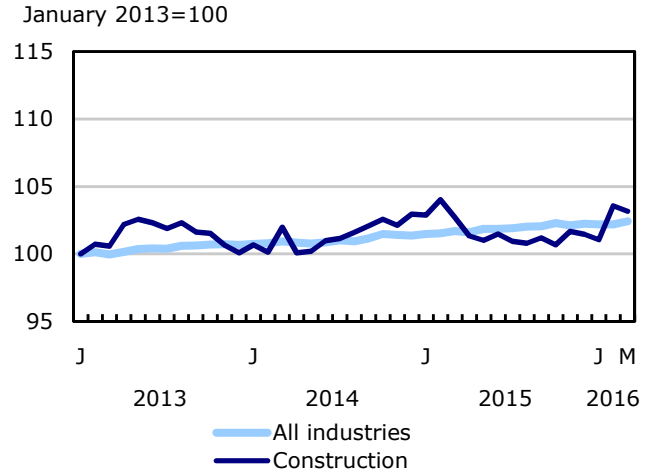
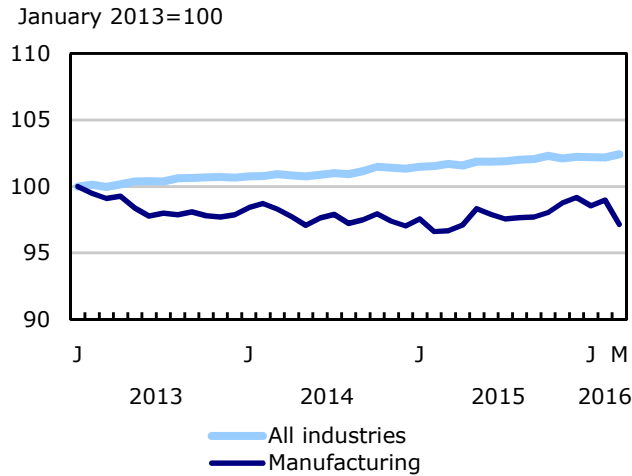
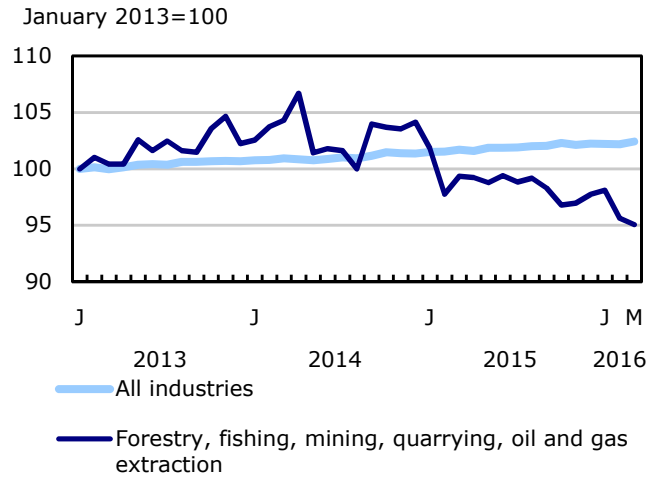
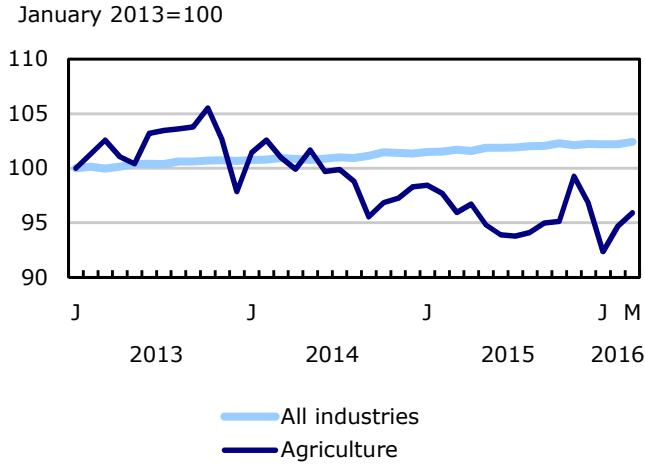


Chart 4
Employment indexes by industry, Canada, seasonally adjusted

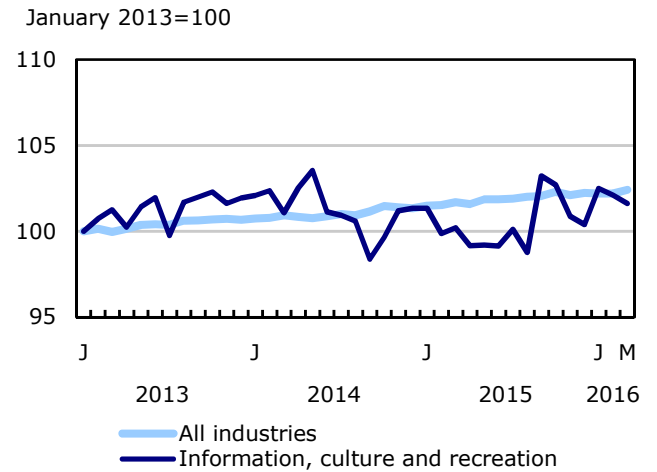
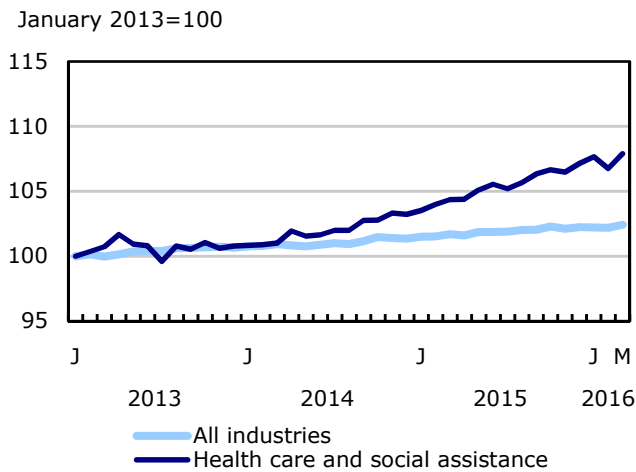
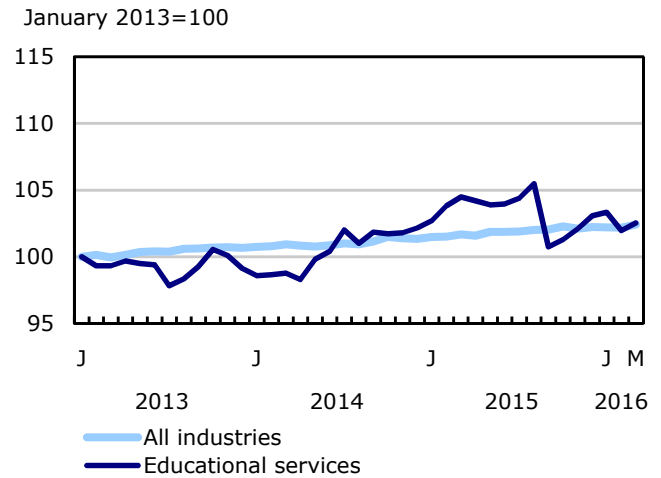
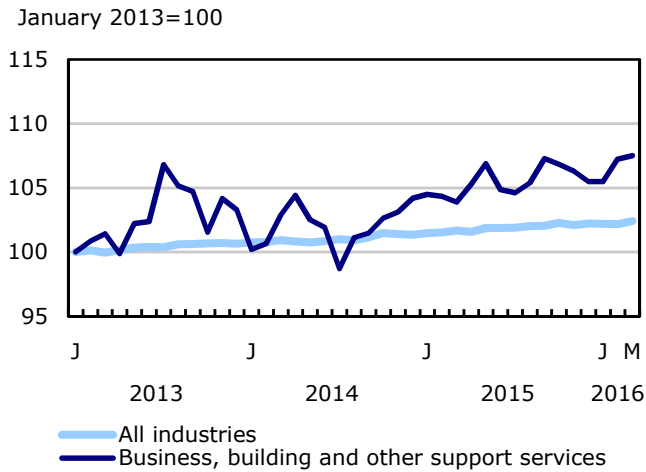
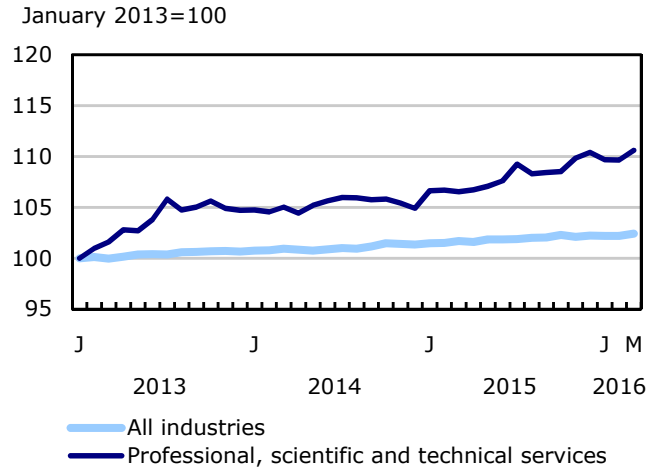
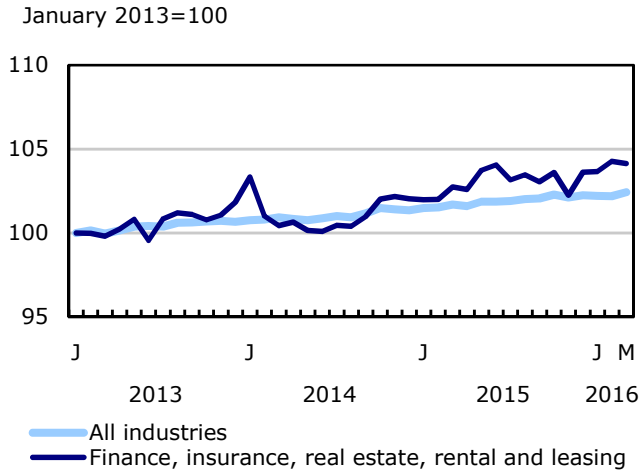


Chart 5
Employment indexes by industry, Canada, seasonally adjusted

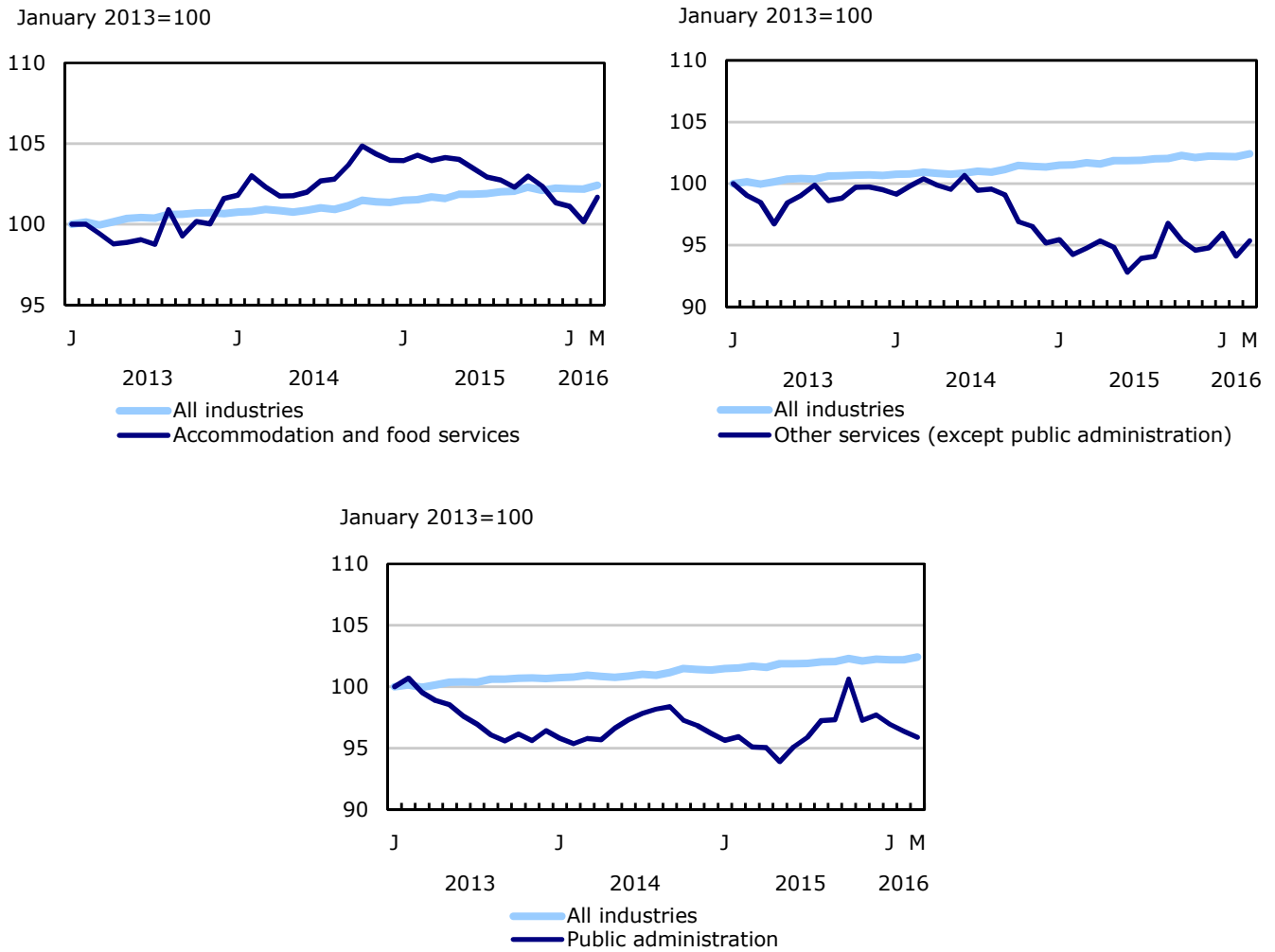


Chart 6
Employment indexes by province, Canada, seasonally adjusted

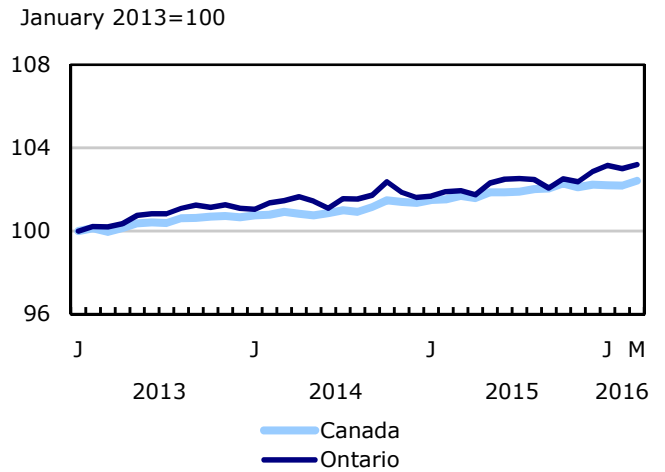
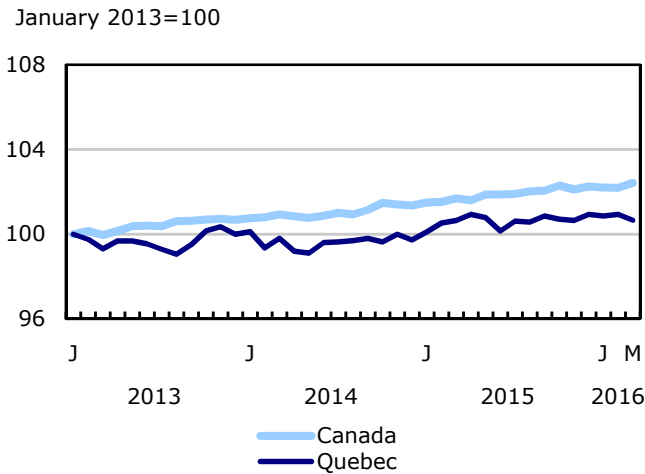
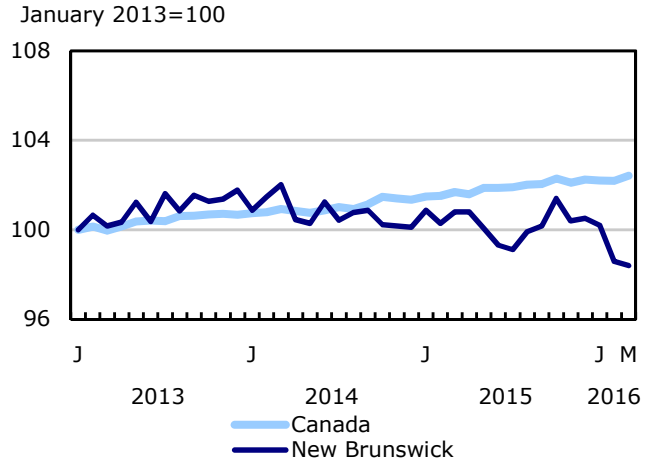
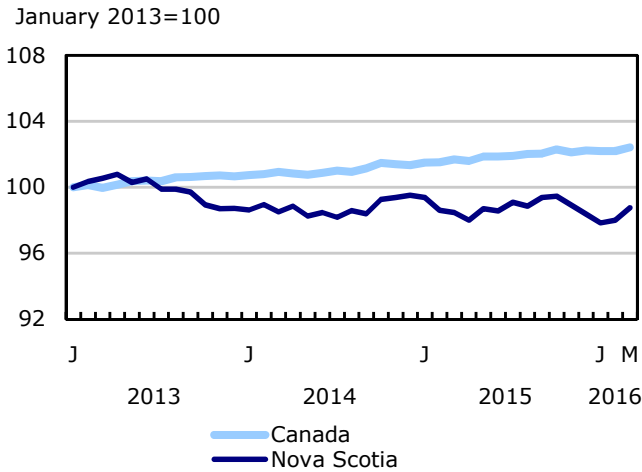
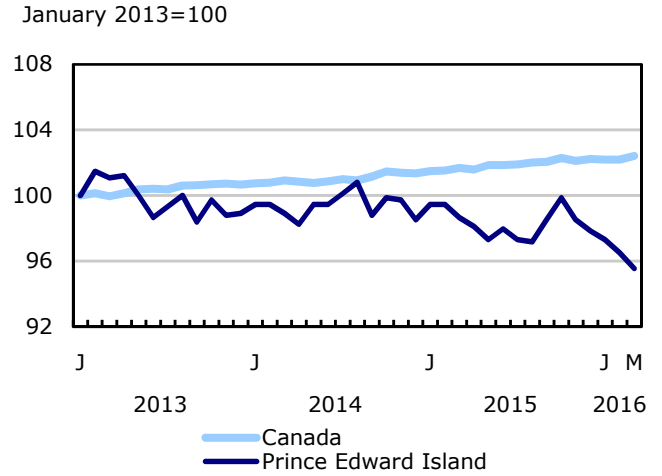
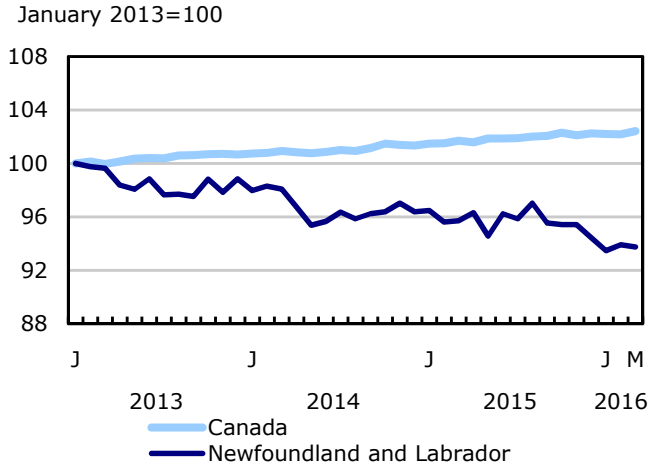
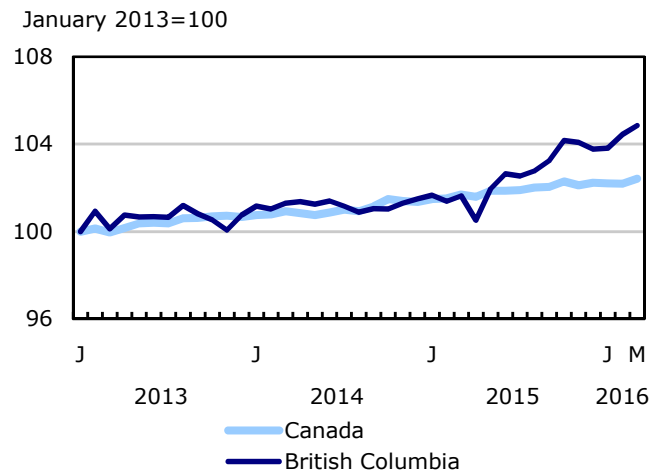
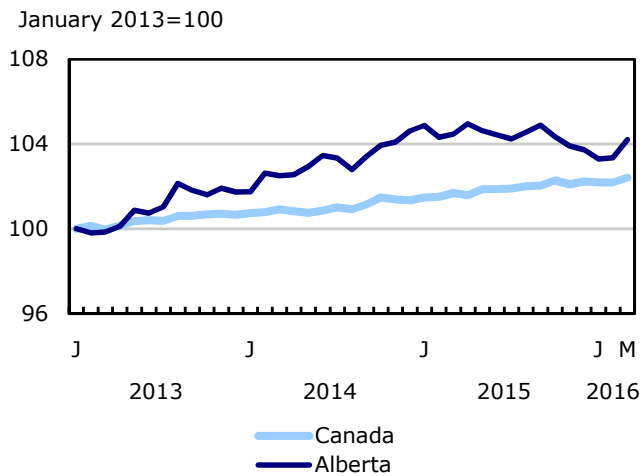
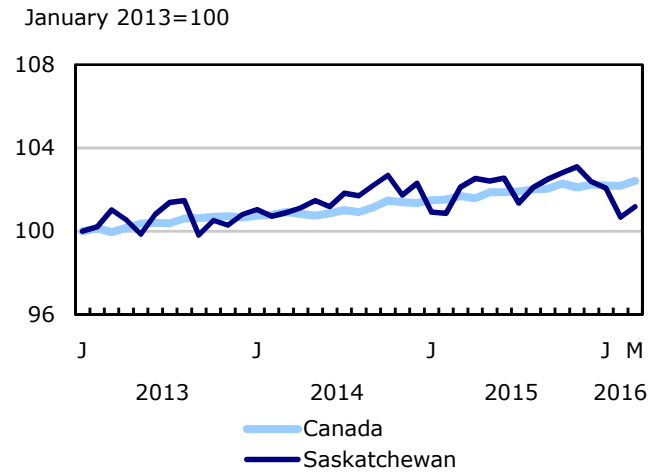
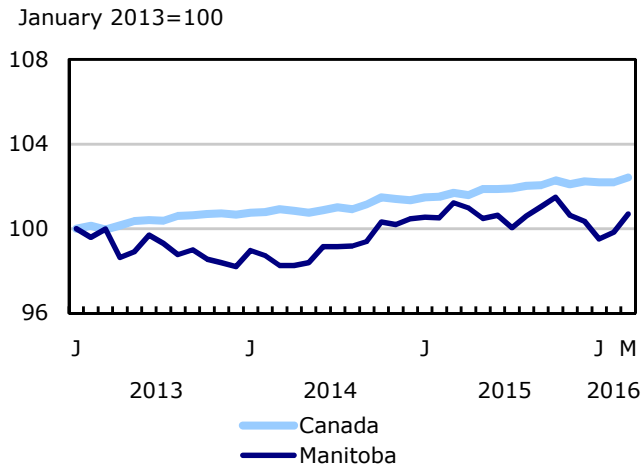


Chart 7
Employment indexes by province, Canada, seasonally adjusted



Related products

Selected publications from Statistics Canada

71-526-X	Methodology of the Canadian Labour Force Survey
71-543-G	Guide to the Labour Force Survey
71-587-X	Aboriginal Peoples Living Off-reserve in Western Canada: Estimates from the Labour Force Survey
71-588-X	The Aboriginal Labour Force Analysis Series
71-606-X	The Immigrant Labour Force Analysis Series
71F0031X	Improvements to the Labour Force Survey (LFS)
71M0001X	Labour Force Survey Microdata File

Selected CANSIM tables from Statistics Canada

279-0029	Work absence statistics of full-time employees by province, census metropolitan area (CMA) and sex, annual
279-0030	Work absence statistics of full-time employees by sex and North American Industry Classification System (NAICS), annual
279-0032	Work absence statistics of full-time employees by sex and age group, annual
279-0033	Work absence statistics of full-time employees by sex and presence of children, annual
279-0034	Work absence statistics of full-time employees by sex and job tenure, annual
279-0035	Work absence statistics of full-time employees by sex and public and private sector, annual
279-0036	Work absence statistics of full-time employees by sex and educational attainment, annual
279-0037	Work absence statistics of full-time employees by sex and workplace size, annual
279-0038	Work absence statistics of full-time employees by sex and job status, annual
279-0039	Work absence statistics of full-time employees by sex and union coverage, annual
279-0040	Work absence statistics of full-time employees by sex and National Occupational Classification (NOC), annual
282-0001	Labour force survey estimates (LFS), by sex and detailed age group, unadjusted for seasonality, monthly

282-0002	Labour force survey estimates (LFS), by sex and detailed age group, annual
282-0003	Labour force survey estimates (LFS), by educational attainment, sex and age group, unadjusted for seasonality, monthly
282-0004	Labour force survey estimates (LFS), by educational attainment, sex and age group, annual
282-0005	Labour force survey estimates (LFS), by full- and part-time students during school months, sex and age group, unadjusted for seasonality, monthly
282-0006	Labour force survey estimates (LFS), by students during summer months, sex and age group, unadjusted for seasonality, monthly
282-0007	Labour force survey estimates (LFS), by North American Industry Classification System (NAICS), sex and age group, unadjusted for seasonality, monthly
282-0008	Labour force survey estimates (LFS), by North American Industry Classification System (NAICS), sex and age group, annual
282-0011	Labour force survey estimates (LFS), employment by class of worker, North American Industry Classification System (NAICS) and sex, unadjusted for seasonality, monthly
282-0012	Labour force survey estimates (LFS), employment by class of worker, North American Industry Classification System (NAICS) and sex, annual
282-0013	Labour force survey estimates (LFS), part-time employment by reason for part-time work, sex and age group, unadjusted for seasonality, monthly
282-0014	Labour force survey estimates (LFS), part-time employment by reason for part-time work, sex and age group, annual
282-0015	Labour force survey estimates (LFS), by usual hours worked, main or all jobs, sex and age group, unadjusted for seasonality, monthly
282-0016	Labour force survey estimates (LFS), by usual hours worked, main or all jobs, sex and age group, annual
282-0017	Labour force survey estimates (LFS), by actual hours worked, main or all jobs, sex and age group, unadjusted for seasonality, monthly
282-0018	Labour force survey estimates (LFS), by actual hours worked, main or all jobs, sex and age group, annual
282-0019	Labour force survey estimates (LFS), by usual hours worked, class of worker, North American Industry Classification System (NAICS) and sex, unadjusted for seasonality, monthly
282-0020	Labour force survey estimates (LFS), by usual hours worked, class of worker, North American Industry Classification System (NAICS) and sex, annual
282-0021	Labour force survey estimates (LFS), by actual hours worked, class of worker, North American Industry Classification System (NAICS) and sex, unadjusted for seasonality, monthly
282-0022	Labour force survey estimates (LFS), by actual hours worked, class of worker, North American Industry Classification System (NAICS) and sex, annual

282-0027	Labour force survey estimates (LFS), by total and average usual and actual hours worked, main or all jobs, type of work, sex and age group, unadjusted for seasonality, monthly
282-0028	Labour force survey estimates (LFS), by total and average usual and actual hours worked, main or all jobs, type of work, sex and age group, annual
282-0031	Labour force survey estimates (LFS), multiple jobholders by North American Industry Classification System (NAICS), sex and age group, annual
282-0032	Labour force survey estimates (LFS), multiple jobholders by North American Industry Classification System (NAICS), sex and age group, unadjusted for seasonality, monthly
282-0035	Labour force survey estimates (LFS), multiple jobholders by usual hours worked at main and all jobs, unadjusted for seasonality, monthly
282-0036	Labour force survey estimates (LFS), multiple jobholders by usual hours worked at main and all jobs, annual
282-0037	Labour force survey estimates (LFS), job tenure by type of work, sex and age group, unadjusted for seasonality, monthly
282-0038	Labour force survey estimates (LFS), job tenure by type of work, sex and age group, annual
282-0041	Labour force survey estimates (LFS), job tenure by North American Industry Classification System (NAICS) and sex, unadjusted for seasonality, monthly
282-0042	Labour force survey estimates (LFS), job tenure by North American Industry Classification System (NAICS) and sex, annual
282-0047	Labour force survey estimates (LFS), duration of unemployment by sex and age group, unadjusted for seasonality, monthly
282-0048	Labour force survey estimates (LFS), duration of unemployment by sex and age group, annual
282-0049	Labour force survey estimates (LFS), unemployment by type of work sought and search method, sex and age group, unadjusted for seasonality, monthly
282-0050	Labour force survey estimates (LFS), unemployment by type of work sought and search method, sex and age group, annual
282-0051	Labour force survey estimates (LFS), retirement age by class of worker and sex, annual
282-0071	Labour force survey estimates (LFS), wages of employees by type of work, North American Industry Classification System (NAICS), sex and age group, unadjusted for seasonality, monthly
282-0072	Labour force survey estimates (LFS), wages of employees by type of work, North American Industry Classification System (NAICS), sex and age group, annual
282-0073	Labour force survey estimates (LFS), wages of employees by job permanence, union coverage, sex and age group, unadjusted for seasonality, monthly
282-0074	Labour force survey estimates (LFS), wages of employees by job permanence, union coverage, sex and age group, annual
282-0075	Labour force survey estimates (LFS), employees by establishment size, North American Industry Classification System (NAICS), sex and age group, unadjusted for seasonality, monthly

282-0076	Labour force survey estimates (LFS), employees by establishment size, North American Industry Classification System (NAICS), sex and age group, annual
282-0077	Labour force survey estimates (LFS), employees by union coverage, North American Industry Classification System (NAICS), sex and age group, unadjusted for seasonality, monthly
282-0078	Labour force survey estimates (LFS), employees by union coverage, North American Industry Classification System (NAICS), sex and age group, annual
282-0079	Labour force survey estimates (LFS), employees by job permanency, North American Industry Classification System (NAICS), sex and age group, unadjusted for seasonality, monthly
282-0080	Labour force survey estimates (LFS), employees by job permanency, North American Industry Classification System (NAICS), sex and age group, annual
282-0083	Labour force survey estimates (LFS), employees working overtime (weekly) by North American Industry Classification System (NAICS), sex and age group, unadjusted for seasonality, monthly
282-0084	Labour force survey estimates (LFS), employees working overtime (weekly) by North American Industry Classification System (NAICS), sex and age group, annual
282-0085	Labour force survey estimates (LFS), supplementary unemployment rates by sex and age group, unadjusted for seasonality, monthly
282-0086	Labour force survey estimates (LFS), supplementary unemployment rates by sex and age group, annual
282-0087	Labour force survey estimates (LFS), by sex and age group, seasonally adjusted and unadjusted, monthly
282-0088	Labour force survey estimates (LFS), employment by North American Industry Classification System (NAICS), seasonally adjusted and unadjusted, monthly
282-0089	Labour force survey estimates (LFS), employment by class of worker and sex, seasonally adjusted and unadjusted, monthly
282-0092	Labour force survey estimates (LFS), actual hours worked at main job by North American Industry Classification System (NAICS), seasonally adjusted, monthly
282-0094	Labour force survey estimates (LFS), by North American Industry Classification System (NAICS), Canada, seasonally adjusted, monthly
282-0095	Labour force survey estimates (LFS), by full- and part-time students during school months, sex and age group, annual
282-0100	Labour force survey estimates (LFS), by territories, sex and age group, 3-month moving average, seasonally adjusted and unadjusted, monthly
282-0101	Labour force survey estimates (LFS), by immigrant status, age group, Canada, regions, provinces and Montreal, Toronto, Vancouver census metropolitan areas, 3-month moving average, unadjusted for seasonality, monthly
282-0102	Labour force survey estimates (LFS), by immigrant status, age group, Canada, regions, provinces and Montreal, Toronto, Vancouver census metropolitan areas, annual

282-0103	Labour force survey estimates (LFS), by immigrant status, sex and detailed age group, Canada, 3-month moving average, unadjusted for seasonality, monthly
282-0104	Labour force survey estimates (LFS), by immigrant status, sex and detailed age group, Canada, annual
282-0105	Labour force survey estimates (LFS), by immigrant status, educational attainment, sex and age group, Canada, 3-month moving average, unadjusted for seasonality, monthly
282-0106	Labour force survey estimates (LFS), by immigrant status, educational attainment, sex and age group, Canada, annual
282-0107	Labour force survey estimates (LFS), by immigrant status, country of birth, sex and age group, Canada, 3-month moving average, unadjusted for seasonality, monthly
282-0108	Labour force survey estimates (LFS), by immigrant status, country of birth, sex and age group, Canada, annual
282-0122	Labour force survey estimates (LFS), by provinces and economic regions based on 2011 Census boundaries, 3-month moving average, unadjusted for seasonality, monthly
282-0123	Labour force survey estimates (LFS), by provinces, territories and economic regions based on 2011 Census boundaries, annual
282-0124	Labour force survey estimates (LFS), employment by economic region based on 2011 Census boundaries and North American Industry Classification System (NAICS), 3-month moving average, unadjusted for seasonality, monthly
282-0125	Labour force survey estimates (LFS), employment by economic region based on 2011 Census boundaries and North American Industry Classification System (NAICS), annual
282-0128	Labour force survey estimates (LFS), by census metropolitan area based on 2011 Census boundaries, sex and age group, 3-month moving average, unadjusted for seasonality, monthly
282-0129	Labour force survey estimates (LFS), by census metropolitan area based on 2011 Census boundaries, sex and age group, annual
282-0130	Labour force survey estimates (LFS), employment by census metropolitan area based on 2011 Census boundaries and North American Industry Classification System (NAICS), 3-month moving average, unadjusted for seasonality, monthly
282-0131	Labour force survey estimates (LFS), employment by census metropolitan area based on 2011 Census boundaries and North American Industry Classification System (NAICS), annual
282-0134	Labour force survey estimates (LFS), by selected census agglomerations based on 2011 Census boundaries, annual
282-0135	Labour force survey estimates (LFS), by census metropolitan area based on 2011 Census boundaries, 3-month moving average, seasonally adjusted and unadjusted, monthly
282-0136	Labour force survey estimates (LFS), by Montréal, Toronto and Vancouver census metropolitan areas based on 2011 Census boundaries, seasonally adjusted and unadjusted, monthly

282-0137	Labour force survey estimates (LFS), by population centres and rural areas based on 2011 Census boundaries, sex and age group, unadjusted for seasonality, monthly
282-0138	Labour force survey estimates (LFS), by population centres and rural areas based on 2011 Census boundaries, sex and age group, annual
282-0139	Labour force survey estimates (LFS), employment by population centres and rural areas based on 2011 Census boundaries, class of worker and North American Industry Classification System (NAICS), unadjusted for seasonality, monthly
282-0140	Labour force survey estimates (LFS), employment by population centres and rural areas based on 2011 Census boundaries, class of worker and North American Industry Classification System (NAICS), annual
282-0141	Labour force survey estimates (LFS), by National Occupational Classification (NOC) and sex, unadjusted for seasonality, monthly
282-0142	Labour force survey estimates (LFS), by National Occupational Classification (NOC) and sex, annual
282-0143	Labour force survey estimates (LFS), by usual hours worked, National Occupational Classification (NOC) and sex, unadjusted for seasonality, monthly
282-0144	Labour force survey estimates (LFS), by usual hours worked, National Occupational Classification (NOC) and sex, annual
282-0145	Labour force survey estimates (LFS), by actual hours worked, National Occupational Classification (NOC) and sex, unadjusted for seasonality, monthly
282-0146	Labour force survey estimates (LFS), by actual hours worked, National Occupational Classification (NOC) and sex, annual
282-0147	Labour force survey estimates (LFS), multiple jobholders by National Occupational Classification (NOC), sex and age group, unadjusted for seasonality, monthly
282-0148	Labour force survey estimates (LFS), multiple jobholders by National Occupational Classification (NOC), sex and age group, annual
282-0149	Labour force survey estimates (LFS), job tenure by National Occupational Classification (NOC) and sex, unadjusted for seasonality, monthly
282-0150	Labour force survey estimates (LFS), job tenure by National Occupational Classification (NOC) and sex, annual
282-0151	Labour force survey estimates (LFS), wages of employees by type of work, National Occupational Classification (NOC), sex, and age group, unadjusted for seasonality, monthly
282-0152	Labour force survey estimates (LFS), wages of employees by type of work, National Occupational Classification (NOC), sex, and age group, annual
282-0153	Labour force survey estimates (LFS), employees working overtime (weekly) by National Occupational Classification (NOC), sex and age group, unadjusted for seasonality, monthly
282-0154	Labour force survey estimates (LFS), employees working overtime (weekly) by National Occupational Classification (NOC), sex and age group, annual

282-0155	Labour force survey estimates (LFS), employment by National Occupational Classification (NOC), seasonally adjusted, monthly
282-0156	Labour force survey estimates (LFS), employment by economic region based on 2011 Census boundaries and National Occupational Classification (NOC), three-month moving average, unadjusted for seasonality, monthly
282-0157	Labour force survey estimates (LFS), employment by economic region based on 2011 Census boundaries and National Occupational Classification (NOC), annual
282-0158	Labour force survey estimates (LFS), employment by census metropolitan area based on 2011 Census boundaries and National Occupational Classification (NOC), three-month moving average, unadjusted for seasonality, monthly
282-0159	Labour force survey estimates (LFS), employment by census metropolitan area based on 2011 Census boundaries and National Occupational Classification (NOC), annual
282-0160	Labour force survey estimates (LFS), weekly wage distributions of employees by type of work, National Occupational Classification (NOC) and sex, unadjusted for seasonality, monthly
282-0161	Labour force survey estimates (LFS), weekly wage distributions of employees by type of work, National Occupational Classification (NOC) and sex, annual
282-0162	Labour force survey estimates (LFS), hourly wage distribution of employees by type of work, National Occupational Classification (NOC) and sex, unadjusted for seasonality, monthly
282-0163	Labour force survey estimates (LFS), hourly wage distribution of employees by type of work, National Occupational Classification (NOC) and sex, annual
282-0164	Labour force survey estimates (LFS), employees by union status and National Occupational Classification (NOC), Canada, annual
282-0165	Labour force survey estimates (LFS), employment by Aboriginal group, National Occupational Classification (NOC), sex and age group, annual
282-0166	Labour force survey estimates (LFS), employment by Aboriginal group, National Occupational Classification (NOC) and age group, Canada, selected provinces and regions, annual
282-0167	Labour force survey estimates (LFS), average usual hours and wages of employees by age group, sex, union coverage, job permanency, and National Occupational Classification (NOC), unadjusted for seasonality, monthly
282-0168	Labour force survey estimates (LFS), regional unemployment rates used by the Employment Insurance Program, three-month moving average, seasonally adjusted, monthly
282-0200	Labour force survey estimates (LFS), weekly wage distributions of employees by type of work, North American Industry Classification System (NAICS), and sex, unadjusted for seasonality, monthly
282-0201	Labour force survey estimates (LFS), weekly wage distributions of employees by type of work, North American Industry Classification System (NAICS), and sex, annual
282-0204	Labour force survey estimates (LFS), hourly wage distributions of employees by type of work, North American Industry Classification System (NAICS), and sex, unadjusted for seasonality, monthly

282-0205	Labour force survey estimates (LFS), hourly wage distributions of employees by type of work, North American Industry Classification System (NAICS), and sex, annual
282-0208	Labour force survey estimates (LFS), by educational degree, sex and age group, unadjusted for seasonality, monthly
282-0209	Labour force survey estimates (LFS), by educational degree, sex and age group, annual
282-0210	Labour force survey estimates (LFS), by family type and family age composition, unadjusted for seasonality, monthly
282-0211	Labour force survey estimates (LFS), by family type and family age composition, annual
282-0212	Labour force survey estimates (LFS), hours lost by employees by reason of absence, full and part week and sex, unadjusted for seasonality, monthly
282-0213	Labour force survey estimates (LFS), hours lost by employees by reason of absence, full and part week and sex, annual
282-0214	Labour force survey estimates (LFS), activity prior to unemployment by sex and age group, unadjusted for seasonality, monthly
282-0215	Labour force survey estimates (LFS), activity prior to unemployment, by sex and age group, annual
282-0216	Labour force survey estimates (LFS), reason for leaving job during previous year by sex and age group, unadjusted for seasonality, monthly
282-0217	Labour force survey estimates (LFS), reason for leaving job during previous year by sex and age group, annual
282-0218	Labour force survey estimates (LFS), reason for not looking for work, by sex and age group, unadjusted for seasonality, monthly
282-0219	Labour force survey estimates (LFS), reason for not looking for work, by sex and age group, annual
282-0220	Labour Force Survey estimates (LFS), employees by union status, sex and age group, Canada and provinces, annual
282-0221	Labour Force Survey estimates (LFS), employees by union status, sex, age group and education level, Canada, annual
282-0223	Labour Force Survey estimates (LFS), employees by union status, North American Industry Classification System (NAICS) and sex, Canada, annual
282-0224	Labour Force Survey estimates (LFS), employees by union status, establishment size, job tenure, type of work and job permanency, Canada, annual
282-0225	Labour Force Survey estimates (LFS), average weekly earnings, average hourly wage rate and average usual weekly hours by union status and type of work, Canada and provinces, annual
282-0226	Labour force survey estimates (LFS), by Aboriginal group, sex and age group, Canada, selected provinces and regions, annual

282-0227	Labour force survey estimates (LFS), by detailed Aboriginal group, sex and age group, Canada and selected regions, annual
282-0228	Labour force survey estimates (LFS), by Aboriginal group, educational attainment and age group, Canada and selected regions, annual
282-0229	Labour force survey estimates (LFS), employment by Aboriginal group, North American Industry Classification System (NAICS), sex and age group, annual
282-0230	Labour force survey estimates (LFS), employment by Aboriginal group, North American Industry Classification System (NAICS) and age group, Canada and selected regions, annual
282-0233	Labour force survey estimates (LFS), average hourly and weekly wages and average usual weekly hours by Aboriginal group and age group, Canada, selected provinces and regions, annual

Selected surveys from Statistics Canada

3701	Labour Force Survey
------	---------------------

Selected summary tables from Statistics Canada

- *Average hourly wages of employees by selected characteristics and occupation, unadjusted data, by province (monthly)*
- *Days lost per worker by industry and sex*
- *People employed, by educational attainment*
- *Reasons for part-time work by sex and age group*
- *Self-employment, historical summary*
- *Employment by age, sex, type of work, class of worker and province (monthly)*
- *Actual hours worked per week by industry, seasonally adjusted (monthly)*
- *Labour force characteristics, unadjusted, by territory (3 month moving average)*
- *Employment by industry and sex*
- *Full-time and part-time employment by sex and age group*
- *Labour force characteristics by age and sex*
- *Labour force characteristics by immigrant status of population aged 25 to 54, and by educational attainment*
- *Labour force characteristics by immigrant status, by detailed age group*

- *Labour force characteristics by immigrant status of population aged 25 to 54, by country of birth*
- *Days lost per worker due to illness or disability, by sex, by province*
- *Employment by industry*
- *Labour force characteristics, seasonally adjusted, by province (monthly)*
- *Labour force characteristics, unadjusted, by province (monthly)*
- *Labour force, employment and unemployment, levels and rates, by province*
- *Economic indicators, by province and territory (monthly and quarterly)*
- *Days lost per worker by reason, by provinces*
- *Labour force characteristics, seasonally adjusted, by census metropolitan area (3 month moving average)*
- *Labour force characteristics, unadjusted, by economic region (3 month moving average)*
- *Distribution of employed people, by industry, by province*
- *Employment by major industry group, seasonally adjusted, by province (monthly)*
- *Labour force characteristics*
- *Labour force characteristics, unadjusted, by census metropolitan area (3 month moving average)*
- *Labour force characteristics, population 15 years and older, by census metropolitan area*
- *Labour force characteristics, population 15 years and older, by economic region, by province*
- *Canada: Economic and financial data*
- *Labour force characteristics by sex and age group*
- *Labour force characteristics by immigrant status of population aged 25 to 54, by province*
- *Latest statistics (monthly)*

Statistical tables

Table 1
Labour force characteristics by age and sex, Canada, seasonally adjusted

	February 2016	March 2016	S.E. ¹	Change from			Percent change from		
				last month	last December	twelve months ago	last month	last December	twelve months ago
in thousands (except rates)									
15 years and over, both sexes									
Population	29,465.4	29,492.5	...	27.1	73.5	309.2	0.1	0.2	1.1
Labour force	19,413.3	19,428.4	29.8	15.1	31.1	199.1	0.1	0.2	1.0
Employment	18,002.9	18,043.5	29.5	40.6	32.6	129.6	0.2	0.2	0.7
Employment full-time	14,571.6	14,606.9	42.5	35.3	-10.9	133.7	0.2	-0.1	0.9
Employment part-time	3,431.3	3,436.6	39.7	5.3	43.5	-4.1	0.2	1.3	-0.1
Unemployment	1,410.4	1,384.9	25.3	-25.5	-1.5	69.6	-1.8	-0.1	5.3
Participation rate	65.9	65.9	0.1	0.0	0.0	0.0
Unemployment rate	7.3	7.1	0.1	-0.2	0.0	0.3
Employment rate	61.1	61.2	0.1	0.1	0.0	-0.2
Part-time rate	19.1	19.0	0.2	0.0	0.2	-0.2
15 to 24 years, both sexes									
Population	4,402.6	4,399.7	...	-2.9	-12.3	-44.1	-0.1	-0.3	-1.0
Labour force	2,804.2	2,809.2	17.4	5.0	0.9	-59.9	0.2	0.0	-2.1
Employment	2,431.4	2,433.7	16.4	2.3	-8.8	-60.4	0.1	-0.4	-2.4
Employment full-time	1,288.7	1,258.3	20.6	-30.4	-30.5	-7.3	-2.4	-2.4	-0.6
Employment part-time	1,142.6	1,175.4	21.4	32.8	21.7	-53.1	2.9	1.9	-4.3
Unemployment	372.9	375.5	14.9	2.6	9.7	0.5	0.7	2.7	0.1
Participation rate	63.7	63.8	0.4	0.1	0.1	-0.8
Unemployment rate	13.3	13.4	0.5	0.1	0.4	0.3
Employment rate	55.2	55.3	0.4	0.1	-0.1	-0.8
Part-time rate	47.0	48.3	0.8	1.3	1.1	-1.0
25 years and over, men									
Population	12,259.4	12,274.2	...	14.8	41.6	174.4	0.1	0.3	1.4
Labour force	8,828.9	8,816.3	16.0	-12.6	3.9	153.0	-0.1	0.0	1.8
Employment	8,222.2	8,230.6	16.7	8.4	2.4	88.7	0.1	0.0	1.1
Employment full-time	7,545.4	7,567.4	23.4	22.0	-9.6	68.8	0.3	-0.1	0.9
Employment part-time	676.8	663.2	19.2	-13.6	12.0	19.9	-2.0	1.8	3.1
Unemployment	606.7	585.7	14.9	-21.0	1.5	64.3	-3.5	0.3	12.3
Participation rate	72.0	71.8	0.1	-0.2	-0.2	0.2
Unemployment rate	6.9	6.6	0.2	-0.3	0.0	0.6
Employment rate	67.1	67.1	0.1	0.0	-0.2	-0.2
Part-time rate	8.2	8.1	0.2	-0.2	0.1	0.2
25 years and over, women									
Population	12,803.4	12,818.7	...	15.3	44.3	178.9	0.1	0.3	1.4
Labour force	7,780.2	7,802.9	17.0	22.7	26.4	106.0	0.3	0.3	1.4
Employment	7,349.3	7,379.2	16.9	29.9	39.0	101.2	0.4	0.5	1.4
Employment full-time	5,737.4	5,781.2	27.9	43.8	29.2	72.2	0.8	0.5	1.3
Employment part-time	1,611.9	1,598.0	26.7	-13.9	9.8	29.1	-0.9	0.6	1.9
Unemployment	430.8	423.7	13.5	-7.1	-12.6	4.8	-1.6	-2.9	1.1
Participation rate	60.8	60.9	0.1	0.1	0.0	0.0
Unemployment rate	5.5	5.4	0.2	-0.1	-0.2	0.0
Employment rate	57.4	57.6	0.1	0.2	0.1	0.0
Part-time rate	21.9	21.7	0.4	-0.3	0.0	0.1
25 to 54 years, both sexes									
Population	14,607.0	14,613.8	...	6.8	9.1	44.2	0.0	0.1	0.3
Labour force	12,664.1	12,682.9	24.6	18.8	30.2	82.8	0.1	0.2	0.7
Employment	11,868.5	11,908.5	26.2	40.0	46.7	40.6	0.3	0.4	0.3
Unemployment	795.6	774.4	19.0	-21.2	-16.5	42.2	-2.7	-2.1	5.8
Participation rate	86.7	86.8	0.2	0.1	0.2	0.3
Unemployment rate	6.3	6.1	0.1	-0.2	-0.2	0.3
Employment rate	81.3	81.5	0.2	0.2	0.3	0.0
25 to 54 years, men									
Population	7,272.9	7,276.1	...	3.2	3.6	20.4	0.0	0.0	0.3
Labour force	6,634.5	6,640.1	15.7	5.6	2.5	52.6	0.1	0.0	0.8
Employment	6,178.0	6,195.9	17.3	17.9	6.1	10.0	0.3	0.1	0.2
Unemployment	456.6	444.2	13.7	-12.4	-3.6	42.6	-2.7	-0.8	10.6
Participation rate	91.2	91.3	0.2	0.1	0.0	0.5
Unemployment rate	6.9	6.7	0.2	-0.2	0.0	0.6
Employment rate	84.9	85.2	0.2	0.3	0.1	-0.1

See notes at the end of the table.

Table 1 – continued

Labour force characteristics by age and sex, Canada, seasonally adjusted

	February 2016	March 2016	S.E. ¹	Change from			Percent change from		
				last month	last December	twelve months ago	last month	last December	twelve months ago
in thousands (except rates)									
25 to 54 years, women									
Population	7,334.1	7,337.7	...	3.6	5.5	23.7	0.0	0.1	0.3
Labour force	6,029.5	6,042.7	17.8	13.2	27.6	30.1	0.2	0.5	0.5
Employment	5,690.5	5,712.5	18.2	22.0	40.4	30.5	0.4	0.7	0.5
Unemployment	339.0	330.2	12.7	-8.8	-12.8	-0.3	-2.6	-3.7	-0.1
Participation rate	82.2	82.4	0.2	0.2	0.4	0.2
Unemployment rate	5.6	5.5	0.2	-0.1	-0.2	0.0
Employment rate	77.6	77.9	0.2	0.3	0.5	0.2
55 years and over, both sexes									
Population	10,455.8	10,479.1	...	23.3	76.8	309.1	0.2	0.7	3.0
Labour force	3,945.0	3,936.4	20.7	-8.6	0.1	176.3	-0.2	0.0	4.7
Employment	3,703.1	3,701.3	20.7	-1.8	-5.3	149.4	0.0	-0.1	4.2
Unemployment	241.9	235.0	10.5	-6.9	5.3	26.8	-2.9	2.3	12.9
Participation rate	37.7	37.6	0.2	-0.1	-0.2	0.6
Unemployment rate	6.1	6.0	0.3	-0.1	0.2	0.5
Employment rate	35.4	35.3	0.2	-0.1	-0.3	0.4
55 years and over, men									
Population	4,986.5	4,998.1	...	11.6	38.0	153.9	0.2	0.8	3.2
Labour force	2,194.4	2,176.2	13.6	-18.2	1.4	100.4	-0.8	0.1	4.8
Employment	2,044.3	2,034.7	13.9	-9.6	-3.7	78.7	-0.5	-0.2	4.0
Unemployment	150.1	141.5	7.8	-8.6	5.1	21.7	-5.7	3.7	18.1
Participation rate	44.0	43.5	0.3	-0.5	-0.3	0.6
Unemployment rate	6.8	6.5	0.4	-0.3	0.2	0.7
Employment rate	41.0	40.7	0.3	-0.3	-0.4	0.3
55 years and over, women									
Population	5,469.3	5,481.0	...	11.7	38.8	155.2	0.2	0.7	2.9
Labour force	1,750.6	1,760.2	14.2	9.6	-1.2	75.9	0.5	-0.1	4.5
Employment	1,658.8	1,666.7	14.2	7.9	-1.4	70.8	0.5	-0.1	4.4
Unemployment	91.8	93.5	6.7	1.7	0.2	5.1	1.9	0.2	5.8
Participation rate	32.0	32.1	0.3	0.1	-0.3	0.5
Unemployment rate	5.2	5.3	0.4	0.1	0.0	0.1
Employment rate	30.3	30.4	0.3	0.1	-0.3	0.4

1. Average standard error of change in two consecutive months (see "Sampling Errors" in Data Quality for further explanations).

Note(s): Related CANSIM table 282-0087. The sum of individual categories may not always add to the total due to rounding.

Table 2
Employment by class of worker and industry, Canada, seasonally adjusted

	February 2016	March 2016	S.E. ¹	Change from			Percent change from		
				last month	last December	twelve months ago	last month	last December	twelve months ago
in thousands									
Class of worker									
Employees	15,203.2	15,265.8	36.5	62.6	71.8	100.6	0.4	0.5	0.7
Self-employed ²	2,799.7	2,777.7	26.2	-22.0	-39.2	29.0	-0.8	-1.4	1.1
Public/private sector employees									
Public sector employees	3,600.6	3,598.0	21.1	-2.6	-4.3	-8.4	-0.1	-0.1	-0.2
Private sector employees	11,602.7	11,667.8	36.6	65.1	76.2	109.0	0.6	0.7	0.9
Industry	18,002.9	18,043.5	29.5	40.6	32.6	129.6	0.2	0.2	0.7
Goods-producing sector	3,903.5	3,869.4	17.0	-34.1	-17.2	1.7	-0.9	-0.4	0.0
Agriculture	290.9	294.7	5.6	3.8	-2.7	-0.1	1.3	-0.9	0.0
Forestry, fishing, mining, quarrying, oil and gas extraction ³	344.4	342.3	5.5	-2.1	-9.6	-15.5	-0.6	-2.7	-4.3
Utilities	137.9	139.6	2.6	1.7	7.3	3.0	1.2	5.5	2.2
Construction	1,398.0	1,392.5	11.6	-5.5	23.1	6.1	-0.4	1.7	0.4
Manufacturing	1,732.2	1,700.4	10.8	-31.8	-35.2	8.3	-1.8	-2.0	0.5
Services-producing sector	14,099.4	14,174.1	28.0	74.7	49.9	127.9	0.5	0.4	0.9
Wholesale and retail trade	2,743.3	2,745.7	14.7	2.4	22.1	1.2	0.1	0.8	0.0
Transportation and warehousing	895.3	903.5	8.4	8.2	-6.0	-15.1	0.9	-0.7	-1.6
Finance, insurance, real estate, rental and leasing	1,117.2	1,115.7	8.8	-1.5	5.4	14.7	-0.1	0.5	1.3
Professional, scientific and technical services	1,387.6	1,399.8	10.9	12.2	2.6	51.7	0.9	0.2	3.8
Business, building and other support services	773.0	774.9	10.4	1.9	14.6	26.0	0.2	1.9	3.5
Educational services	1,257.8	1,265.0	10.4	7.2	-6.5	-24.0	0.6	-0.5	-1.9
Health care and social assistance	2,322.8	2,347.7	11.5	24.9	16.6	77.1	1.1	0.7	3.4
Information, culture and recreation	764.2	760.6	10.0	-3.6	9.3	10.6	-0.5	1.2	1.4
Accommodation and food services	1,174.4	1,192.1	11.9	17.7	4.0	-26.7	1.5	0.3	-2.2
Other services (except public administration)	756.5	766.4	8.1	9.9	4.6	4.7	1.3	0.6	0.6
Public administration	907.2	902.6	7.1	-4.6	-17.0	7.4	-0.5	-1.8	0.8

1. Average standard error of change in two consecutive months (see "Sampling Errors" in Data Quality for further explanations).

2. Includes both incorporated and unincorporated working owners, self-employed persons who do not have a business and persons working in a family business without pay.

3. Also referred to as Natural resources.

Note(s): Related CANSIM Tables 282-0088, 282-0089. The sum of individual categories may not always add to the total due to rounding.

Table 3
Labour force characteristics by province, seasonally adjusted

	February 2016	March 2016	S.E. ¹	Change from			Percent change from		
				last month	last December	twelve months ago	last month	last December	twelve months ago
in thousands (except rates)									
Newfoundland and Labrador									
Population	443.5	443.8	...	0.3	0.8	0.7	0.1	0.2	0.2
Labour force	269.6	266.0	2.0	-3.6	-6.1	-6.3	-1.3	-2.2	-2.3
Employment	231.5	231.1	2.1	-0.4	-1.7	-4.8	-0.2	-0.7	-2.0
Employment full-time	194.6	195.5	2.7	0.9	0.8	-6.7	0.5	0.4	-3.3
Employment part-time	36.9	35.6	2.1	-1.3	-2.5	1.9	-3.5	-6.6	5.6
Unemployment	38.1	34.8	2.1	-3.3	-4.5	-1.6	-8.7	-11.5	-4.4
Participation rate	60.8	59.9	0.5	-0.9	-1.5	-1.6
Unemployment rate	14.1	13.1	0.7	-1.0	-1.3	-0.3
Employment rate	52.2	52.1	0.5	-0.1	-0.5	-1.1
Prince Edward Island									
Population	121.2	121.3	...	0.1	0.1	0.5	0.1	0.1	0.4
Labour force	80.7	79.9	0.6	-0.8	-0.7	-2.8	-1.0	-0.9	-3.4
Employment	71.8	71.1	0.6	-0.7	-1.7	-2.3	-1.0	-2.3	-3.1
Employment full-time	61.0	59.5	0.9	-1.5	-1.2	-1.9	-2.5	-2.0	-3.1
Employment part-time	10.8	11.6	0.7	0.8	-0.5	-0.5	7.4	-4.1	-4.1
Unemployment	8.9	8.8	0.6	-0.1	0.9	-0.5	-1.1	11.4	-5.4
Participation rate	66.6	65.9	0.5	-0.7	-0.6	-2.6
Unemployment rate	11.0	11.0	0.7	0.0	1.2	-0.2
Employment rate	59.2	58.6	0.5	-0.6	-1.5	-2.2
Nova Scotia									
Population	787.4	787.8	...	0.4	0.8	3.4	0.1	0.1	0.4
Labour force	488.8	492.7	2.7	3.9	4.6	0.7	0.8	0.9	0.1
Employment	444.3	447.7	2.7	3.4	1.8	1.4	0.8	0.4	0.3
Employment full-time	364.8	369.8	3.8	5.0	1.4	7.7	1.4	0.4	2.1
Employment part-time	79.4	77.8	3.3	-1.6	0.3	-6.4	-2.0	0.4	-7.6
Unemployment	44.5	45.0	2.5	0.5	2.8	-0.7	1.1	6.6	-1.5
Participation rate	62.1	62.5	0.3	0.4	0.5	-0.2
Unemployment rate	9.1	9.1	0.5	0.0	0.5	-0.2
Employment rate	56.4	56.8	0.3	0.4	0.1	-0.1
New Brunswick									
Population	622.6	623.1	...	0.5	1.2	0.8	0.1	0.2	0.1
Labour force	383.9	384.8	2.2	0.9	-2.5	-8.7	0.2	-0.6	-2.2
Employment	346.0	345.4	2.3	-0.6	-7.4	-8.4	-0.2	-2.1	-2.4
Employment full-time	292.7	293.6	3.0	0.9	-7.7	-4.3	0.3	-2.6	-1.4
Employment part-time	53.3	51.8	2.6	-1.5	0.3	-4.0	-2.8	0.6	-7.2
Unemployment	37.9	39.4	2.1	1.5	4.9	-0.3	4.0	14.2	-0.8
Participation rate	61.7	61.8	0.4	0.1	-0.5	-1.4
Unemployment rate	9.9	10.2	0.5	0.3	1.3	0.1
Employment rate	55.6	55.4	0.4	-0.2	-1.3	-1.5
Quebec									
Population	6,869.3	6,873.6	...	4.3	11.4	43.3	0.1	0.2	0.6
Labour force	4,447.4	4,430.1	15.6	-17.3	-29.7	-1.5	-0.4	-0.7	0.0
Employment	4,109.8	4,098.6	15.9	-11.2	-11.0	0.3	-0.3	-0.3	0.0
Employment full-time	3,326.0	3,303.5	22.5	-22.5	-7.0	25.3	-0.7	-0.2	0.8
Employment part-time	783.9	795.1	20.9	11.2	-4.0	-25.0	1.4	-0.5	-3.0
Unemployment	337.6	331.5	13.7	-6.1	-18.7	-1.8	-1.8	-5.3	-0.5
Participation rate	64.7	64.5	0.2	-0.2	-0.5	-0.4
Unemployment rate	7.6	7.5	0.3	-0.1	-0.4	0.0
Employment rate	59.8	59.6	0.2	-0.2	-0.3	-0.4
Ontario									
Population	11,466.0	11,477.8	...	11.8	33.3	130.3	0.1	0.3	1.1
Labour force	7,480.7	7,496.9	19.8	16.2	30.7	86.0	0.2	0.4	1.2
Employment	6,974.7	6,988.6	19.3	13.9	22.5	85.6	0.2	0.3	1.2
Employment full-time	5,651.4	5,677.7	28.0	26.3	-6.3	115.8	0.5	-0.1	2.1
Employment part-time	1,323.3	1,310.9	26.2	-12.4	28.9	-30.2	-0.9	2.3	-2.3
Unemployment	506.0	508.3	17.0	2.3	8.2	0.4	0.5	1.6	0.1
Participation rate	65.2	65.3	0.2	0.1	0.1	0.0
Unemployment rate	6.8	6.8	0.2	0.0	0.1	-0.1
Employment rate	60.8	60.9	0.2	0.1	0.0	0.1

See notes at the end of the table.

Table 3 – continued

Labour force characteristics by province, seasonally adjusted

	February 2016	March 2016	S.E. ¹	Change from			Percent change from		
				last month	last December	twelve months ago	last month	last December	twelve months ago
in thousands (except rates)									
Manitoba									
Population	994.0	995.2	...	1.2	3.3	11.2	0.1	0.3	1.1
Labour force	671.2	676.9	2.5	5.7	2.7	0.4	0.8	0.4	0.1
Employment	630.7	636.2	2.6	5.5	2.2	-3.4	0.9	0.3	-0.5
Employment full-time	508.5	515.0	3.8	6.5	8.5	-5.6	1.3	1.7	-1.1
Employment part-time	122.2	121.3	3.6	-0.9	-6.3	2.2	-0.7	-4.9	1.8
Unemployment	40.5	40.7	2.1	0.2	0.6	3.8	0.5	1.5	10.3
Participation rate	67.5	68.0	0.3	0.5	0.0	-0.8
Unemployment rate	6.0	6.0	0.3	0.0	0.1	0.5
Employment rate	63.5	63.9	0.3	0.4	0.0	-1.1
Saskatchewan									
Population	865.8	866.6	...	0.8	1.6	7.6	0.1	0.2	0.9
Labour force	601.1	606.0	2.6	4.9	-2.6	5.5	0.8	-0.4	0.9
Employment	565.5	568.3	2.7	2.8	-6.8	-5.3	0.5	-1.2	-0.9
Employment full-time	467.1	466.7	3.8	-0.4	-12.2	-11.3	-0.1	-2.5	-2.4
Employment part-time	98.4	101.6	3.5	3.2	5.4	6.0	3.3	5.6	6.3
Unemployment	35.6	37.7	2.1	2.1	4.1	10.9	5.9	12.2	40.7
Participation rate	69.4	69.9	0.3	0.5	-0.5	0.0
Unemployment rate	5.9	6.2	0.3	0.3	0.7	1.7
Employment rate	65.3	65.6	0.3	0.3	-0.9	-1.2
Alberta									
Population	3,385.6	3,389.6	...	4.0	10.6	57.0	0.1	0.3	1.7
Labour force	2,471.9	2,471.1	9.8	-0.8	14.0	32.2	0.0	0.6	1.3
Employment	2,277.5	2,296.4	9.8	18.9	10.3	-5.6	0.8	0.5	-0.2
Employment full-time	1,869.0	1,883.5	14.1	14.5	2.6	-24.7	0.8	0.1	-1.3
Employment part-time	408.6	412.9	13.1	4.3	7.7	19.1	1.1	1.9	4.9
Unemployment	194.3	174.7	8.1	-19.6	3.7	37.9	-10.1	2.2	27.7
Participation rate	73.0	72.9	0.3	-0.1	0.2	-0.3
Unemployment rate	7.9	7.1	0.3	-0.8	0.1	1.5
Employment rate	67.3	67.7	0.3	0.4	0.0	-1.4
British Columbia									
Population	3,910.0	3,913.9	...	3.9	10.7	54.6	0.1	0.3	1.4
Labour force	2,518.0	2,524.1	10.5	6.1	20.9	93.7	0.2	0.8	3.9
Employment	2,351.0	2,360.0	10.6	9.0	24.3	72.1	0.4	1.0	3.2
Employment full-time	1,836.6	1,842.1	15.6	5.5	10.2	39.3	0.3	0.6	2.2
Employment part-time	514.4	517.9	14.8	3.5	14.1	32.8	0.7	2.8	6.8
Unemployment	167.0	164.1	8.5	-2.9	-3.4	21.6	-1.7	-2.0	15.2
Participation rate	64.4	64.5	0.3	0.1	0.4	1.5
Unemployment rate	6.6	6.5	0.3	-0.1	-0.2	0.6
Employment rate	60.1	60.3	0.3	0.2	0.5	1.0

1. Average standard error of change in two consecutive months (see "Sampling Errors" in Data Quality for further explanations).

Note(s): Related CANSIM Table 282-0087. The sum of individual categories may not always add to the total due to rounding.

Table 4-1
Selected labour force characteristics (seasonally adjusted) — Newfoundland and Labrador

	February 2016	March 2016	S.E. ¹	Change from			Percent change from		
				last month	last December	twelve months ago	last month	last December	twelve months ago
in thousands (except rates)									
Both sexes, 15 years and over									
Population	443.5	443.8	...	0.3	0.8	0.7	0.1	0.2	0.2
Labour force	269.6	266.0	2.0	-3.6	-6.1	-6.3	-1.3	-2.2	-2.3
Employment	231.5	231.1	2.1	-0.4	-1.7	-4.8	-0.2	-0.7	-2.0
Employment full-time	194.6	195.5	2.7	0.9	0.8	-6.7	0.5	0.4	-3.3
Unemployment	38.1	34.8	2.1	-3.3	-4.5	-1.6	-8.7	-11.5	-4.4
Participation rate	60.8	59.9	0.5	-0.9	-1.5	-1.6
Unemployment rate	14.1	13.1	0.7	-1.0	-1.3	-0.3
Employment rate	52.2	52.1	0.5	-0.1	-0.5	-1.1
Part-time rate	15.9	15.4	0.9	-0.5	-1.0	1.1
Both sexes, 15 to 24 years									
Population	55.6	55.6	...	0.0	-0.1	-1.3	0.0	-0.2	-2.3
Labour force	37.0	35.1	1.0	-1.9	-2.4	-1.8	-5.1	-6.4	-4.9
Employment	31.6	30.0	1.0	-1.6	-1.2	-0.5	-5.1	-3.8	-1.6
Unemployment	5.4	5.1	0.9	-0.3	-1.2	-1.3	-5.6	-19.0	-20.3
Participation rate	66.5	63.1	1.7	-3.4	-4.2	-1.8
Unemployment rate	14.6	14.5	2.3	-0.1	-2.3	-2.8
Employment rate	56.8	54.0	1.7	-2.8	-2.0	0.4
Part-time rate	46.5	42.7	3.8	-3.9	-6.1	-1.9
Men, 25 years and over									
Population	189.1	189.2	...	0.1	0.4	1.0	0.1	0.2	0.5
Labour force	122.4	122.0	1.3	-0.4	-1.8	-2.1	-0.3	-1.5	-1.7
Employment	101.3	103.3	1.4	2.0	0.9	-3.2	2.0	0.9	-3.0
Unemployment	21.1	18.7	1.4	-2.4	-2.7	1.1	-11.4	-12.6	6.2
Participation rate	64.7	64.5	0.7	-0.2	-1.1	-1.4
Unemployment rate	17.2	15.3	1.1	-1.9	-2.0	1.1
Employment rate	53.6	54.6	0.7	1.0	0.4	-2.0
Part-time rate	4.4	5.4	0.9	1.0	2.2	-0.7
Women, 25 years and over									
Population	198.8	199.0	...	0.2	0.4	1.0	0.1	0.2	0.5
Labour force	110.2	109.0	1.1	-1.2	-1.8	-2.3	-1.1	-1.6	-2.1
Employment	98.6	97.9	1.2	-0.7	-1.3	-1.0	-0.7	-1.3	-1.0
Unemployment	11.6	11.1	1.1	-0.5	-0.5	-1.3	-4.3	-4.3	-10.5
Participation rate	55.4	54.8	0.6	-0.6	-1.0	-1.4
Unemployment rate	10.5	10.2	1.0	-0.3	-0.3	-0.9
Employment rate	49.6	49.2	0.6	-0.4	-0.7	-0.7
Part-time rate	18.1	17.7	1.5	-0.4	-2.1	3.9
Industry									
	231.5	231.1	2.1	-0.4	-1.7	-4.8	-0.2	-0.7	-2.0
Goods-producing sector									
Agriculture	50.7	50.5	1.5	-0.2	-1.2	-3.6	-0.4	-2.3	-6.7
Forestry, fishing, mining, quarrying, oil and gas extraction ²	1.3	1.3	0.3	0.0	0.1	-0.5	0.0	8.3	-27.8
Utilities	14.9	14.8	0.8	-0.1	-0.5	-1.7	-0.7	-3.3	-10.3
Construction	2.4	2.4	0.3	0.0	0.1	-0.2	0.0	4.3	-7.7
Manufacturing	21.3	21.3	1.1	0.0	-0.6	-1.0	0.0	-2.7	-4.5
	10.7	10.6	0.8	-0.1	-0.4	-0.3	-0.9	-3.6	-2.8
Services-producing sector									
Wholesale and retail trade	180.8	180.7	1.8	-0.1	-0.4	-1.1	-0.1	-0.2	-0.6
Transportation and warehousing	44.2	43.2	0.9	-1.0	0.0	2.1	-2.3	0.0	5.1
Finance, insurance, real estate, rental and leasing	8.8	9.2	0.6	0.4	0.1	-1.0	4.5	1.1	-9.8
Professional, scientific and technical services	8.5	8.3	0.4	-0.2	-0.5	0.4	-2.4	-5.7	5.1
Business, building and other support services	10.8	10.5	0.5	-0.3	-0.8	-0.7	-2.8	-7.1	-6.2
Educational services	7.1	7.4	0.5	0.3	-0.9	0.7	4.2	-10.8	10.4
Health care and social assistance	14.2	14.2	0.7	0.0	-0.7	-1.7	0.0	-4.7	-10.7
Information, culture and recreation	38.2	38.5	0.8	0.3	-0.4	1.6	0.8	-1.0	4.3
Accommodation and food services	7.3	6.5	0.6	-0.8	0.6	-0.5	-11.0	10.2	-7.1
Other services (except public administration)	15.1	15.1	0.8	0.0	0.9	-1.1	0.0	6.3	-6.8
Public administration	12.5	13.0	0.6	0.5	0.6	0.6	4.0	4.8	4.8
	14.2	14.8	0.6	0.6	0.6	-1.5	4.2	4.2	-9.2

1. Average standard error of change in two consecutive months (see "Sampling Errors" in Data Quality for further explanations).

2. Also referred to as Natural resources.

Note(s): Related CANSIM Tables 282-0087, 282-0088. The sum of individual categories may not always add to the total due to rounding.

Table 4-2
Selected labour force characteristics (seasonally adjusted) — Prince Edward Island

	February 2016	March 2016	S.E. ¹	Change from			Percent change from		
				last month	last December	twelve months ago	last month	last December	twelve months ago
in thousands (except rates)									
Both sexes, 15 years and over									
Population	121.2	121.3	...	0.1	0.1	0.5	0.1	0.1	0.4
Labour force	80.7	79.9	0.6	-0.8	-0.7	-2.8	-1.0	-0.9	-3.4
Employment	71.8	71.1	0.6	-0.7	-1.7	-2.3	-1.0	-2.3	-3.1
Employment full-time	61.0	59.5	0.9	-1.5	-1.2	-1.9	-2.5	-2.0	-3.1
Unemployment	8.9	8.8	0.6	-0.1	0.9	-0.5	-1.1	11.4	-5.4
Participation rate	66.6	65.9	0.5	-0.7	-0.6	-2.6
Unemployment rate	11.0	11.0	0.7	0.0	1.2	-0.2
Employment rate	59.2	58.6	0.5	-0.6	-1.5	-2.2
Part-time rate	15.0	16.3	1.0	1.3	-0.3	-0.2
Both sexes, 15 to 24 years									
Population	18.0	18.0	...	0.0	-0.1	-0.4	0.0	-0.6	-2.2
Labour force	12.8	12.2	0.3	-0.6	-0.6	-0.5	-4.7	-4.7	-3.9
Employment	10.9	9.9	0.3	-1.0	-1.2	-0.3	-9.2	-10.8	-2.9
Unemployment	1.9	2.3	0.3	0.4	0.5	-0.1	21.1	27.8	-4.2
Participation rate	71.1	67.8	1.8	-3.3	-2.9	-1.2
Unemployment rate	14.8	18.9	2.2	4.1	4.8	0.0
Employment rate	60.6	55.0	1.8	-5.6	-6.3	-0.4
Part-time rate	38.5	40.4	3.6	1.9	-1.9	-4.7
Men, 25 years and over									
Population	49.5	49.5	...	0.0	0.1	0.5	0.0	0.2	1.0
Labour force	34.8	34.6	0.3	-0.2	-0.1	-1.3	-0.6	-0.3	-3.6
Employment	30.8	30.9	0.4	0.1	-0.5	-1.0	0.3	-1.6	-3.1
Unemployment	4.0	3.7	0.4	-0.3	0.4	-0.2	-7.5	12.1	-5.1
Participation rate	70.3	69.9	0.7	-0.4	-0.3	-3.4
Unemployment rate	11.5	10.7	1.0	-0.8	1.2	-0.2
Employment rate	62.2	62.4	0.8	0.2	-1.2	-2.7
Part-time rate	7.1	7.4	1.1	0.3	-0.2	1.8
Women, 25 years and over									
Population	53.8	53.8	...	0.0	0.1	0.4	0.0	0.2	0.7
Labour force	33.1	33.1	0.3	0.0	0.0	-1.0	0.0	0.0	-2.9
Employment	30.2	30.4	0.4	0.2	0.1	-0.9	0.7	0.3	-2.9
Unemployment	2.9	2.7	0.4	-0.2	-0.1	-0.2	-6.9	-3.6	-6.9
Participation rate	61.5	61.5	0.6	0.0	-0.1	-2.4
Unemployment rate	8.8	8.2	1.0	-0.6	-0.3	-0.3
Employment rate	56.1	56.5	0.7	0.4	0.1	-2.1
Part-time rate	14.6	17.4	1.6	2.9	0.9	-0.5
Industry	71.8	71.1	0.6	-0.7	-1.7	-2.3	-1.0	-2.3	-3.1
Goods-producing sector	17.4	16.8	0.5	-0.6	0.0	-0.5	-3.4	0.0	-2.9
Agriculture	3.3	3.4	0.3	0.1	0.4	0.3	3.0	13.3	9.7
Forestry, fishing, mining, quarrying, oil and gas extraction ²	2.1	2.3	0.2	0.2	-0.1	-0.4	9.5	-4.2	-14.8
Utilities	0.5	0.4	0.1	-0.1	0.1	0.1	-20.0	33.3	33.3
Construction	4.9	4.5	0.3	-0.4	-0.4	-0.7	-8.2	-8.2	-13.5
Manufacturing	6.6	6.3	0.2	-0.3	0.2	0.3	-4.5	3.3	5.0
Services-producing sector	54.5	54.3	0.6	-0.2	-1.7	-1.8	-0.4	-3.0	-3.2
Wholesale and retail trade	10.5	10.3	0.3	-0.2	-0.5	-0.9	-1.9	-4.6	-8.0
Transportation and warehousing	2.6	2.6	0.2	0.0	0.2	-0.3	0.0	8.3	-10.3
Finance, insurance, real estate, rental and leasing	2.6	2.7	0.1	0.1	0.0	0.3	3.8	0.0	12.5
Professional, scientific and technical services	3.5	3.6	0.1	0.1	0.3	0.6	2.9	9.1	20.0
Business, building and other support services	2.2	2.1	0.2	-0.1	-0.4	-0.4	-4.5	-16.0	-16.0
Educational services	5.6	5.5	0.2	-0.1	0.0	0.2	-1.8	0.0	3.8
Health care and social assistance	9.8	9.8	0.2	0.0	0.2	-0.1	0.0	2.1	-1.0
Information, culture and recreation	2.3	2.3	0.2	0.0	0.1	-0.3	0.0	4.5	-11.5
Accommodation and food services	5.4	5.8	0.3	0.4	-0.9	0.4	7.4	-13.4	7.4
Other services (except public administration)	3.2	2.8	0.2	-0.4	-0.6	-0.7	-12.5	-17.6	-20.0
Public administration	6.7	6.9	0.2	0.2	0.0	-0.6	3.0	0.0	-8.0

1. Average standard error of change in two consecutive months (see "Sampling Errors" in Data Quality for further explanations).

2. Also referred to as Natural resources.

Note(s): Related CANSIM Tables 282-0087, 282-0088. The sum of individual categories may not always add to the total due to rounding.

Table 4-3
Selected labour force characteristics (seasonally adjusted) — Nova Scotia

	February 2016	March 2016	S.E. ¹	Change from			Percent change from		
				last month	last December	twelve months ago	last month	last December	twelve months ago
in thousands (except rates)									
Both sexes, 15 years and over									
Population	787.4	787.8	...	0.4	0.8	3.4	0.1	0.1	0.4
Labour force	488.8	492.7	2.7	3.9	4.6	0.7	0.8	0.9	0.1
Employment	444.3	447.7	2.7	3.4	1.8	1.4	0.8	0.4	0.3
Employment full-time	364.8	369.8	3.8	5.0	1.4	7.7	1.4	0.4	2.1
Unemployment	44.5	45.0	2.5	0.5	2.8	-0.7	1.1	6.6	-1.5
Participation rate	62.1	62.5	0.3	0.4	0.5	-0.2
Unemployment rate	9.1	9.1	0.5	0.0	0.5	-0.2
Employment rate	56.4	56.8	0.3	0.4	0.1	-0.1
Part-time rate	17.9	17.4	0.7	-0.5	0.0	-1.5
Both sexes, 15 to 24 years									
Population	110.4	110.3	...	-0.1	-0.3	-2.0	-0.1	-0.3	-1.8
Labour force	72.0	72.0	1.5	0.0	1.2	-2.8	0.0	1.7	-3.7
Employment	61.9	60.0	1.4	-1.9	0.0	-4.3	-3.1	0.0	-6.7
Unemployment	10.1	12.1	1.4	2.0	1.2	1.6	19.8	11.0	15.2
Participation rate	65.2	65.3	1.4	0.1	1.3	-1.3
Unemployment rate	14.0	16.8	1.7	2.8	1.4	2.8
Employment rate	56.1	54.4	1.3	-1.7	0.2	-2.9
Part-time rate	44.3	41.0	2.8	-3.3	-2.5	-6.7
Men, 25 years and over									
Population	324.2	324.4	...	0.2	0.5	2.7	0.1	0.2	0.8
Labour force	212.9	214.9	1.5	2.0	3.1	1.5	0.9	1.5	0.7
Employment	191.7	195.1	1.7	3.4	1.8	3.5	1.8	0.9	1.8
Unemployment	21.2	19.7	1.6	-1.5	1.2	-2.2	-7.1	6.5	-10.0
Participation rate	65.7	66.2	0.5	0.5	0.8	-0.1
Unemployment rate	10.0	9.2	0.7	-0.8	0.5	-1.1
Employment rate	59.1	60.1	0.5	1.0	0.4	0.5
Part-time rate	6.7	7.9	0.8	1.2	0.5	-0.8
Women, 25 years and over									
Population	352.8	353.1	...	0.3	0.6	2.7	0.1	0.2	0.8
Labour force	203.9	205.8	1.5	1.9	0.3	2.0	0.9	0.1	1.0
Employment	190.7	192.6	1.5	1.9	0.0	2.2	1.0	0.0	1.2
Unemployment	13.2	13.2	1.2	0.0	0.3	-0.2	0.0	2.3	-1.5
Participation rate	57.8	58.3	0.4	0.5	0.0	0.1
Unemployment rate	6.5	6.4	0.6	-0.1	0.1	-0.2
Employment rate	54.1	54.5	0.4	0.4	-0.1	0.2
Part-time rate	20.6	19.6	1.1	-0.9	0.4	0.3
Industry									
Industry	444.3	447.7	2.7	3.4	1.8	1.4	0.8	0.4	0.3
Goods-producing sector									
Goods-producing sector	83.1	83.5	1.7	0.4	-1.3	3.4	0.5	-1.5	4.2
Agriculture	5.4	4.2	0.6	-1.2	-1.8	-0.8	-22.2	-30.0	-16.0
Forestry, fishing, mining, quarrying, oil and gas extraction ²	12.3	12.3	0.9	0.0	1.5	0.7	0.0	13.9	6.0
Utilities	3.1	3.0	0.2	-0.1	-0.8	-0.9	-3.2	-21.1	-23.1
Construction	32.3	33.7	1.2	1.4	0.2	1.5	4.3	0.6	4.7
Manufacturing	30.0	30.3	0.8	0.3	-0.5	3.0	1.0	-1.6	11.0
Services-producing sector									
Services-producing sector	361.1	364.1	2.6	3.0	3.1	-2.1	0.8	0.9	-0.6
Wholesale and retail trade	69.0	68.8	1.4	-0.2	-2.4	-4.1	-0.3	-3.4	-5.6
Transportation and warehousing	20.6	21.4	0.8	0.8	0.9	1.3	3.9	4.4	6.5
Finance, insurance, real estate, rental and leasing	24.2	23.2	0.6	-1.0	-1.4	1.2	-4.1	-5.7	5.5
Professional, scientific and technical services	26.1	27.2	0.8	1.1	1.3	0.8	4.2	5.0	3.0
Business, building and other support services	16.9	17.7	0.8	0.8	-0.2	-4.4	4.7	-1.1	-19.9
Educational services	38.0	38.5	1.1	0.5	1.9	2.3	1.3	5.2	6.4
Health care and social assistance	74.4	74.2	1.0	-0.2	2.1	2.8	-0.3	2.9	3.9
Information, culture and recreation	16.1	16.4	0.8	0.3	0.3	-2.5	1.9	1.9	-13.2
Accommodation and food services	30.7	31.8	1.1	1.1	1.8	-1.0	3.6	6.0	-3.0
Other services (except public administration)	18.9	18.5	0.8	-0.4	-0.2	2.1	-2.1	-1.1	12.8
Public administration	26.1	26.4	0.7	0.3	-1.2	-0.8	1.1	-4.3	-2.9

1. Average standard error of change in two consecutive months (see "Sampling Errors" in Data Quality for further explanations).

2. Also referred to as Natural resources.

Note(s): Related CANSIM Tables 282-0087, 282-0088. The sum of individual categories may not always add to the total due to rounding.

Table 4-4
Selected labour force characteristics (seasonally adjusted) — New Brunswick

	February 2016	March 2016	S.E. ¹	Change from			Percent change from		
				last month	last December	twelve months ago	last month	last December	twelve months ago
in thousands (except rates)									
Both sexes, 15 years and over									
Population	622.6	623.1	...	0.5	1.2	0.8	0.1	0.2	0.1
Labour force	383.9	384.8	2.2	0.9	-2.5	-8.7	0.2	-0.6	-2.2
Employment	346.0	345.4	2.3	-0.6	-7.4	-8.4	-0.2	-2.1	-2.4
Employment full-time	292.7	293.6	3.0	0.9	-7.7	-4.3	0.3	-2.6	-1.4
Unemployment	37.9	39.4	2.1	1.5	4.9	-0.3	4.0	14.2	-0.8
Participation rate	61.7	61.8	0.4	0.1	-0.5	-1.4
Unemployment rate	9.9	10.2	0.5	0.3	1.3	0.1
Employment rate	55.6	55.4	0.4	-0.2	-1.3	-1.5
Part-time rate	15.4	15.0	0.7	-0.4	0.4	-0.8
Both sexes, 15 to 24 years									
Population	83.6	83.6	...	0.0	0.0	-1.6	0.0	0.0	-1.9
Labour force	49.6	50.0	1.2	0.4	-1.8	-6.0	0.8	-3.5	-10.7
Employment	41.1	40.5	1.1	-0.6	-2.4	-6.0	-1.5	-5.6	-12.9
Unemployment	8.4	9.5	1.2	1.1	0.6	0.0	13.1	6.7	0.0
Participation rate	59.3	59.8	1.4	0.5	-2.2	-5.9
Unemployment rate	16.9	19.0	2.0	2.1	1.8	2.0
Employment rate	49.2	48.4	1.3	-0.8	-2.9	-6.2
Part-time rate	44.5	42.7	3.0	-1.8	-1.6	1.2
Men, 25 years and over									
Population	261.0	261.3	...	0.3	0.7	1.2	0.1	0.3	0.5
Labour force	172.8	173.0	1.2	0.2	0.1	-2.9	0.1	0.1	-1.6
Employment	152.6	153.2	1.5	0.6	-3.5	-3.3	0.4	-2.2	-2.1
Unemployment	20.2	19.9	1.4	-0.3	3.7	0.5	-1.5	22.8	2.6
Participation rate	66.2	66.2	0.5	0.0	-0.1	-1.4
Unemployment rate	11.7	11.5	0.8	-0.2	2.1	0.5
Employment rate	58.5	58.6	0.6	0.1	-1.5	-1.6
Part-time rate	6.6	6.5	0.8	-0.1	0.6	0.1
Women, 25 years and over									
Population	278.0	278.2	...	0.2	0.6	1.3	0.1	0.2	0.5
Labour force	161.6	161.8	1.2	0.2	-0.8	0.2	0.1	-0.5	0.1
Employment	152.3	151.7	1.2	-0.6	-1.5	0.9	-0.4	-1.0	0.6
Unemployment	9.3	10.1	1.1	0.8	0.7	-0.8	8.6	7.4	-7.3
Participation rate	58.1	58.2	0.4	0.1	-0.4	-0.2
Unemployment rate	5.8	6.2	0.7	0.4	0.4	-0.5
Employment rate	54.8	54.5	0.4	-0.3	-0.7	0.0
Part-time rate	16.4	16.2	1.1	-0.3	1.0	-1.4
Industry									
Industry	346.0	345.4	2.3	-0.6	-7.4	-8.4	-0.2	-2.1	-2.4
Goods-producing sector									
Goods-producing sector	73.4	71.0	1.5	-2.4	-4.8	-1.1	-3.3	-6.3	-1.5
Agriculture	4.3	4.2	0.5	-0.1	-0.2	0.2	-2.3	-4.5	5.0
Forestry, fishing, mining, quarrying, oil and gas extraction ²	10.6	10.3	0.8	-0.3	-0.9	-0.2	-2.8	-8.0	-1.9
Utilities	3.4	3.6	0.2	0.2	-0.1	0.3	5.9	-2.7	9.1
Construction	26.5	23.3	1.0	-3.2	-3.3	-1.1	-12.1	-12.4	-4.5
Manufacturing	28.5	29.7	0.9	1.2	-0.3	-0.2	4.2	-1.0	-0.7
Services-producing sector									
Services-producing sector	272.6	274.4	2.1	1.8	-2.6	-7.3	0.7	-0.9	-2.6
Wholesale and retail trade	54.2	54.8	1.1	0.6	0.0	-0.8	1.1	0.0	-1.4
Transportation and warehousing	19.0	20.0	0.6	1.0	-0.5	1.5	5.3	-2.4	8.1
Finance, insurance, real estate, rental and leasing	15.7	15.3	0.5	-0.4	-0.1	0.6	-2.5	-0.6	4.1
Professional, scientific and technical services	15.3	15.9	0.6	0.6	1.3	-1.4	3.9	8.9	-8.1
Business, building and other support services	17.1	16.9	0.8	-0.2	-0.9	-3.6	-1.2	-5.1	-17.6
Educational services	24.9	25.4	0.8	0.5	-0.7	-2.7	2.0	-2.7	-9.6
Health care and social assistance	52.1	53.0	0.9	0.9	0.3	2.3	1.7	0.6	4.5
Information, culture and recreation	11.6	11.6	0.7	0.0	-0.2	-0.1	0.0	-1.7	-0.9
Accommodation and food services	23.2	22.3	0.9	-0.9	-1.7	-2.5	-3.9	-7.1	-10.1
Other services (except public administration)	16.1	15.8	0.6	-0.3	0.8	0.3	-1.9	5.3	1.9
Public administration	23.5	23.3	0.6	-0.2	-1.0	-1.1	-0.9	-4.1	-4.5

1. Average standard error of change in two consecutive months (see "Sampling Errors" in Data Quality for further explanations).

2. Also referred to as Natural resources.

Note(s): Related CANSIM Tables 282-0087, 282-0088. The sum of individual categories may not always add to the total due to rounding.

Table 4-5
Selected labour force characteristics (seasonally adjusted) — Quebec

	February 2016	March 2016	S.E. ¹	Change from			Percent change from		
				last month	last December	twelve months ago	last month	last December	twelve months ago
in thousands (except rates)									
Both sexes, 15 years and over									
Population	6,869.3	6,873.6	...	4.3	11.4	43.3	0.1	0.2	0.6
Labour force	4,447.4	4,430.1	15.6	-17.3	-29.7	-1.5	-0.4	-0.7	0.0
Employment	4,109.8	4,098.6	15.9	-11.2	-11.0	0.3	-0.3	-0.3	0.0
Employment full-time	3,326.0	3,303.5	22.5	-22.5	-7.0	25.3	-0.7	-0.2	0.8
Unemployment	337.6	331.5	13.7	-6.1	-18.7	-1.8	-1.8	-5.3	-0.5
Participation rate	64.7	64.5	0.2	-0.2	-0.5	-0.4
Unemployment rate	7.6	7.5	0.3	-0.1	-0.4	0.0
Employment rate	59.8	59.6	0.2	-0.2	-0.3	-0.4
Part-time rate	19.1	19.4	0.5	0.3	0.0	-0.6
Both sexes, 15 to 24 years									
Population	944.4	942.8	...	-1.6	-5.8	-22.4	-0.2	-0.6	-2.3
Labour force	644.7	638.4	8.7	-6.3	-7.5	-19.7	-1.0	-1.2	-3.0
Employment	562.1	562.3	8.5	0.2	0.0	-11.6	0.0	0.0	-2.0
Unemployment	82.6	76.2	7.8	-6.4	-7.3	-8.0	-7.7	-8.7	-9.5
Participation rate	68.3	67.7	0.9	-0.6	-0.4	-0.5
Unemployment rate	12.8	11.9	1.1	-0.9	-1.0	-0.9
Employment rate	59.5	59.6	0.9	0.1	0.3	0.1
Part-time rate	51.1	54.7	1.8	3.6	1.5	0.5
Men, 25 years and over									
Population	2,922.3	2,925.2	...	2.9	8.4	32.6	0.1	0.3	1.1
Labour force	2,034.4	2,019.4	8.6	-15.0	-19.6	23.6	-0.7	-1.0	1.2
Employment	1,871.5	1,864.8	9.5	-6.7	-19.5	11.0	-0.4	-1.0	0.6
Unemployment	162.9	154.6	8.6	-8.3	-0.2	12.6	-5.1	-0.1	8.9
Participation rate	69.6	69.0	0.3	-0.6	-0.9	0.0
Unemployment rate	8.0	7.7	0.4	-0.3	0.1	0.6
Employment rate	64.0	63.7	0.3	-0.3	-0.9	-0.4
Part-time rate	8.3	8.3	0.6	0.0	-0.4	-0.4
Women, 25 years and over									
Population	3,002.6	3,005.6	...	3.0	8.8	33.0	0.1	0.3	1.1
Labour force	1,768.3	1,772.3	8.7	4.0	-2.7	-5.4	0.2	-0.2	-0.3
Employment	1,676.2	1,671.5	8.6	-4.7	8.5	0.9	-0.3	0.5	0.1
Unemployment	92.1	100.8	7.4	8.7	-11.1	-6.3	9.4	-9.9	-5.9
Participation rate	58.9	59.0	0.3	0.1	-0.2	-0.8
Unemployment rate	5.2	5.7	0.4	0.5	-0.6	-0.3
Employment rate	55.8	55.6	0.3	-0.2	0.1	-0.6
Part-time rate	20.3	19.9	0.8	-0.5	-0.3	-0.9
Industry									
Industry	4,109.8	4,098.6	15.9	-11.2	-11.0	0.3	-0.3	-0.3	0.0
Goods-producing sector									
Goods-producing sector	859.7	840.6	8.9	-19.1	2.4	-0.3	-2.2	0.3	0.0
Agriculture	56.7	56.9	2.4	0.2	-4.4	4.1	0.4	-7.2	7.8
Forestry, fishing, mining, quarrying, oil and gas extraction ²	31.4	30.2	1.9	-1.2	-2.1	-0.1	-3.8	-6.5	-0.3
Utilities	29.6	28.8	1.4	-0.8	2.3	2.0	-2.7	8.7	7.5
Construction	243.1	234.6	6.0	-8.5	7.2	-12.3	-3.5	3.2	-5.0
Manufacturing	498.8	490.1	6.0	-8.7	-0.6	6.0	-1.7	-0.1	1.2
Services-producing sector									
Services-producing sector	3,250.1	3,258.0	14.7	7.9	-13.4	0.6	0.2	-0.4	0.0
Wholesale and retail trade	648.5	645.9	7.6	-2.6	-6.9	-21.1	-0.4	-1.1	-3.2
Transportation and warehousing	193.5	190.9	4.2	-2.6	-5.9	-3.4	-1.3	-3.0	-1.7
Finance, insurance, real estate, rental and leasing	212.0	204.8	4.1	-7.2	-5.3	-13.6	-3.4	-2.5	-6.2
Professional, scientific and technical services	313.6	312.2	5.5	-1.4	-11.7	-0.1	-0.4	-3.6	0.0
Business, building and other support services	180.7	183.5	5.1	2.8	6.8	19.2	1.5	3.8	11.7
Educational services	266.0	272.8	5.2	6.8	0.4	-10.3	2.6	0.1	-3.6
Health care and social assistance	582.0	590.1	6.3	8.1	6.7	11.7	1.4	1.1	2.0
Information, culture and recreation	178.0	175.8	5.5	-2.2	3.8	1.8	-1.2	2.2	1.0
Accommodation and food services	276.4	282.0	6.2	5.6	1.1	3.4	2.0	0.4	1.2
Other services (except public administration)	159.8	166.1	4.4	6.3	5.4	5.3	3.9	3.4	3.3
Public administration	239.6	233.9	4.0	-5.7	-7.8	7.7	-2.4	-3.2	3.4

1. Average standard error of change in two consecutive months (see "Sampling Errors" in Data Quality for further explanations).

2. Also referred to as Natural resources.

Note(s): Related CANSIM Tables 282-0087, 282-0088. The sum of individual categories may not always add to the total due to rounding.

Table 4-6
Selected labour force characteristics (seasonally adjusted) — Ontario

	February 2016	March 2016	S.E. ¹	Change from			Percent change from		
				last month	last December	twelve months ago	last month	last December	twelve months ago
in thousands (except rates)									
Both sexes, 15 years and over									
Population	11,466.0	11,477.8	...	11.8	33.3	130.3	0.1	0.3	1.1
Labour force	7,480.7	7,496.9	19.8	16.2	30.7	86.0	0.2	0.4	1.2
Employment	6,974.7	6,988.6	19.3	13.9	22.5	85.6	0.2	0.3	1.2
Employment full-time	5,651.4	5,677.7	28.0	26.3	-6.3	115.8	0.5	-0.1	2.1
Unemployment	506.0	508.3	17.0	2.3	8.2	0.4	0.5	1.6	0.1
Participation rate	65.2	65.3	0.2	0.1	0.1	0.0
Unemployment rate	6.8	6.8	0.2	0.0	0.1	-0.1
Employment rate	60.8	60.9	0.2	0.1	0.0	0.1
Part-time rate	19.0	18.8	0.4	-0.2	0.4	-0.7
Both sexes, 15 to 24 years									
Population	1,788.6	1,788.1	...	-0.5	-3.0	-12.3	0.0	-0.2	-0.7
Labour force	1,062.9	1,074.1	12.4	11.2	5.7	-35.9	1.1	0.5	-3.2
Employment	911.0	913.8	11.2	2.8	-8.0	-30.3	0.3	-0.9	-3.2
Unemployment	152.0	160.3	10.4	8.3	13.7	-5.5	5.5	9.3	-3.3
Participation rate	59.4	60.1	0.7	0.7	0.4	-1.6
Unemployment rate	14.3	14.9	0.9	0.6	1.2	0.0
Employment rate	50.9	51.1	0.6	0.2	-0.4	-1.3
Part-time rate	48.5	49.2	1.4	0.7	0.9	-4.0
Men, 25 years and over									
Population	4,668.4	4,674.7	...	6.3	18.3	70.4	0.1	0.4	1.5
Labour force	3,375.6	3,368.5	10.3	-7.1	11.8	77.5	-0.2	0.4	2.4
Employment	3,185.3	3,178.9	10.5	-6.4	13.7	66.1	-0.2	0.4	2.1
Unemployment	190.3	189.6	9.3	-0.7	-1.9	11.4	-0.4	-1.0	6.4
Participation rate	72.3	72.1	0.2	-0.2	0.0	0.6
Unemployment rate	5.6	5.6	0.3	0.0	-0.1	0.2
Employment rate	68.2	68.0	0.2	-0.2	0.0	0.4
Part-time rate	8.1	7.6	0.4	-0.5	-0.1	0.0
Women, 25 years and over									
Population	5,009.0	5,015.1	...	6.1	18.2	72.2	0.1	0.4	1.5
Labour force	3,042.1	3,054.3	11.2	12.2	13.2	44.4	0.4	0.4	1.5
Employment	2,878.5	2,896.0	11.1	17.5	16.9	49.9	0.6	0.6	1.8
Unemployment	163.7	158.4	8.9	-5.3	-3.6	-5.4	-3.2	-2.2	-3.3
Participation rate	60.7	60.9	0.2	0.2	0.0	0.0
Unemployment rate	5.4	5.2	0.3	-0.2	-0.1	-0.2
Employment rate	57.5	57.7	0.2	0.2	0.1	0.1
Part-time rate	21.6	21.4	0.6	-0.3	0.8	0.2
Industry									
Industry	6,974.7	6,988.6	19.3	13.9	22.5	85.6	0.2	0.3	1.2
Goods-producing sector									
Goods-producing sector	1,439.9	1,429.3	10.4	-10.6	11.0	44.2	-0.7	0.8	3.2
Agriculture	83.0	86.5	2.8	3.5	10.1	10.3	4.2	13.2	13.5
Forestry, fishing, mining, quarrying, oil and gas extraction ²	41.0	40.6	2.1	-0.4	-2.9	-0.7	-1.0	-6.7	-1.7
Utilities	48.0	49.1	1.4	1.1	3.5	-2.5	2.3	7.7	-4.8
Construction	503.3	498.2	7.0	-5.1	2.2	16.4	-1.0	0.4	3.4
Manufacturing	764.7	755.0	7.3	-9.7	-1.9	20.9	-1.3	-0.3	2.8
Services-producing sector									
Services-producing sector	5,534.7	5,559.4	18.6	24.7	11.7	41.5	0.4	0.2	0.8
Wholesale and retail trade	1,034.1	1,033.3	9.5	-0.8	0.5	-23.4	-0.1	0.0	-2.2
Transportation and warehousing	326.1	327.2	5.2	1.1	1.7	4.9	0.3	0.5	1.5
Finance, insurance, real estate, rental and leasing	553.8	553.1	6.4	-0.7	-4.3	22.2	-0.1	-0.8	4.2
Professional, scientific and technical services	594.3	600.2	7.4	5.9	4.1	29.5	1.0	0.7	5.2
Business, building and other support services	341.2	337.0	7.4	-4.2	11.1	11.5	-1.2	3.4	3.5
Educational services	507.8	505.1	7.0	-2.7	-2.3	-18.9	-0.5	-0.5	-3.6
Health care and social assistance	824.5	832.9	7.3	8.4	3.8	23.2	1.0	0.5	2.9
Information, culture and recreation	299.4	303.1	6.5	3.7	3.9	-8.8	1.2	1.3	-2.8
Accommodation and food services	446.1	450.7	7.6	4.6	6.4	3.2	1.0	1.4	0.7
Other services (except public administration)	264.4	271.5	5.0	7.1	-8.9	-1.7	2.7	-3.2	-0.6
Public administration	343.0	345.3	4.6	2.3	-4.2	-0.4	0.7	-1.2	-0.1

1. Average standard error of change in two consecutive months (see "Sampling Errors" in Data Quality for further explanations).

2. Also referred to as Natural resources.

Note(s): Related CANSIM Tables 282-0087, 282-0088. The sum of individual categories may not always add to the total due to rounding.

Table 4-7
Selected labour force characteristics (seasonally adjusted) — Manitoba

	February 2016	March 2016	S.E. ¹	Change from			Percent change from		
				last month	last December	twelve months ago	last month	last December	twelve months ago
in thousands (except rates)									
Both sexes, 15 years and over									
Population	994.0	995.2	...	1.2	3.3	11.2	0.1	0.3	1.1
Labour force	671.2	676.9	2.5	5.7	2.7	0.4	0.8	0.4	0.1
Employment	630.7	636.2	2.6	5.5	2.2	-3.4	0.9	0.3	-0.5
Employment full-time	508.5	515.0	3.8	6.5	8.5	-5.6	1.3	1.7	-1.1
Unemployment	40.5	40.7	2.1	0.2	0.6	3.8	0.5	1.5	10.3
Participation rate	67.5	68.0	0.3	0.5	0.0	-0.8
Unemployment rate	6.0	6.0	0.3	0.0	0.1	0.5
Employment rate	63.5	63.9	0.3	0.4	0.0	-1.1
Part-time rate	19.4	19.1	0.5	-0.3	-1.1	0.4
Both sexes, 15 to 24 years									
Population	162.9	163.0	...	0.1	0.1	-0.2	0.1	0.1	-0.1
Labour force	105.8	107.0	1.5	1.2	0.1	-3.8	1.1	0.1	-3.4
Employment	92.9	93.9	1.4	1.0	0.6	-4.4	1.1	0.6	-4.5
Unemployment	12.9	13.1	1.3	0.2	-0.5	0.6	1.6	-3.7	4.8
Participation rate	64.9	65.6	1.0	0.7	0.0	-2.3
Unemployment rate	12.2	12.2	1.2	0.0	-0.5	0.9
Employment rate	57.0	57.6	0.9	0.6	0.3	-2.6
Part-time rate	44.9	44.6	1.9	-0.3	-1.9	1.7
Men, 25 years and over									
Population	407.4	408.0	...	0.6	1.5	5.7	0.1	0.4	1.4
Labour force	301.6	304.2	1.3	2.6	3.6	3.3	0.9	1.2	1.1
Employment	285.4	288.3	1.4	2.9	1.6	0.1	1.0	0.6	0.0
Unemployment	16.3	16.0	1.2	-0.3	2.1	3.3	-1.8	15.1	26.0
Participation rate	74.0	74.6	0.3	0.6	0.7	-0.2
Unemployment rate	5.4	5.3	0.4	-0.1	0.7	1.1
Employment rate	70.1	70.7	0.3	0.6	0.2	-0.9
Part-time rate	7.7	7.9	0.6	0.2	0.3	0.2
Women, 25 years and over									
Population	423.7	424.2	...	0.5	1.6	5.7	0.1	0.4	1.4
Labour force	263.7	265.6	1.5	1.9	-1.1	0.7	0.7	-0.4	0.3
Employment	252.4	254.1	1.5	1.7	0.1	0.9	0.7	0.0	0.4
Unemployment	11.3	11.6	1.1	0.3	-1.1	-0.1	2.7	-8.7	-0.9
Participation rate	62.2	62.6	0.4	0.4	-0.5	-0.7
Unemployment rate	4.3	4.4	0.4	0.1	-0.4	0.0
Employment rate	59.6	59.9	0.4	0.3	-0.2	-0.6
Part-time rate	23.1	22.2	0.9	-0.9	-2.3	0.6
Industry									
	630.7	636.2	2.6	5.5	2.2	-3.4	0.9	0.3	-0.5
Goods-producing sector									
Agriculture	149.6	150.4	1.6	0.8	0.4	3.5	0.5	0.3	2.4
Forestry, fishing, mining, quarrying, oil and gas extraction ²	23.0	22.9	0.9	-0.1	-1.7	-0.1	-0.4	-6.9	-0.4
Utilities	6.2	6.6	0.4	0.4	0.4	0.6	6.5	6.5	10.0
Construction	10.1	9.7	0.3	-0.4	1.0	1.8	-4.0	11.5	22.8
Manufacturing	46.3	47.1	1.0	0.8	0.9	1.3	1.7	1.9	2.8
	64.0	64.0	0.9	0.0	-0.4	-0.3	0.0	-0.6	-0.5
Services-producing sector									
	481.1	485.8	2.5	4.7	1.8	-7.0	1.0	0.4	-1.4
Wholesale and retail trade	89.0	89.1	1.2	0.1	-0.2	-4.4	0.1	-0.2	-4.7
Transportation and warehousing	35.3	35.0	0.8	-0.3	-1.6	-4.2	-0.8	-4.4	-10.7
Finance, insurance, real estate, rental and leasing	32.5	32.7	0.7	0.2	0.7	-1.4	0.6	2.2	-4.1
Professional, scientific and technical services	26.5	28.3	0.7	1.8	2.6	3.1	6.8	10.1	12.3
Business, building and other support services	19.3	18.1	0.8	-1.2	-1.6	0.0	-6.2	-8.1	0.0
Educational services	50.5	51.7	1.0	1.2	-0.6	-0.6	2.4	-1.1	-1.1
Health care and social assistance	101.8	103.1	1.2	1.3	1.0	-0.4	1.3	1.0	-0.4
Information, culture and recreation	22.9	24.2	0.8	1.3	1.8	1.4	5.7	8.0	6.1
Accommodation and food services	40.7	41.3	1.0	0.6	-0.1	-0.6	1.5	-0.2	-1.4
Other services (except public administration)	29.4	29.9	0.7	0.5	1.1	1.2	1.7	3.8	4.2
Public administration	33.2	32.5	0.7	-0.7	-1.3	-1.2	-2.1	-3.8	-3.6

1. Average standard error of change in two consecutive months (see "Sampling Errors" in Data Quality for further explanations).

2. Also referred to as Natural resources.

Note(s): Related CANSIM Tables 282-0087, 282-0088. The sum of individual categories may not always add to the total due to rounding.

Table 4-8
Selected labour force characteristics (seasonally adjusted) — Saskatchewan

	February 2016	March 2016	S.E. ¹	Change from			Percent change from		
				last month	last December	twelve months ago	last month	last December	twelve months ago
in thousands (except rates)									
Both sexes, 15 years and over									
Population	865.8	866.6	...	0.8	1.6	7.6	0.1	0.2	0.9
Labour force	601.1	606.0	2.6	4.9	-2.6	5.5	0.8	-0.4	0.9
Employment	565.5	568.3	2.7	2.8	-6.8	-5.3	0.5	-1.2	-0.9
Employment full-time	467.1	466.7	3.8	-0.4	-12.2	-11.3	-0.1	-2.5	-2.4
Unemployment	35.6	37.7	2.1	2.1	4.1	10.9	5.9	12.2	40.7
Participation rate	69.4	69.9	0.3	0.5	-0.5	0.0
Unemployment rate	5.9	6.2	0.3	0.3	0.7	1.7
Employment rate	65.3	65.6	0.3	0.3	-0.9	-1.2
Part-time rate	17.4	17.9	0.6	0.5	1.2	1.2
Both sexes, 15 to 24 years									
Population	135.3	135.2	...	-0.1	-0.5	-2.2	-0.1	-0.4	-1.6
Labour force	90.1	90.6	1.5	0.5	-1.4	-3.7	0.6	-1.5	-3.9
Employment	79.3	80.1	1.4	0.8	-2.6	-6.0	1.0	-3.1	-7.0
Unemployment	10.9	10.5	1.2	-0.4	1.2	2.4	-3.7	12.9	29.6
Participation rate	66.6	67.0	1.1	0.4	-0.8	-1.6
Unemployment rate	12.1	11.6	1.3	-0.5	1.5	3.0
Employment rate	58.6	59.2	1.0	0.6	-1.7	-3.5
Part-time rate	38.1	38.7	2.0	0.6	4.5	-1.5
Men, 25 years and over									
Population	365.7	366.1	...	0.4	0.9	5.1	0.1	0.2	1.4
Labour force	279.4	280.7	1.4	1.3	-2.1	5.3	0.5	-0.7	1.9
Employment	264.9	265.4	1.6	0.5	-2.4	0.8	0.2	-0.9	0.3
Unemployment	14.4	15.3	1.2	0.9	0.3	4.6	6.2	2.0	43.0
Participation rate	76.4	76.7	0.4	0.3	-0.7	0.4
Unemployment rate	5.2	5.5	0.4	0.3	0.2	1.6
Employment rate	72.4	72.5	0.4	0.1	-0.8	-0.8
Part-time rate	6.9	7.5	0.6	0.6	0.7	2.1
Women, 25 years and over									
Population	364.8	365.3	...	0.5	1.1	4.7	0.1	0.3	1.3
Labour force	231.6	234.7	1.5	3.1	0.8	3.9	1.3	0.3	1.7
Employment	221.3	222.9	1.5	1.6	-1.7	0.0	0.7	-0.8	0.0
Unemployment	10.3	11.9	1.1	1.6	2.6	3.9	15.5	28.0	48.8
Participation rate	63.5	64.2	0.4	0.7	0.0	0.2
Unemployment rate	4.4	5.1	0.5	0.7	1.1	1.6
Employment rate	60.7	61.0	0.4	0.3	-0.7	-0.8
Part-time rate	22.5	22.8	1.0	0.2	0.7	1.7
Industry									
Industry	565.5	568.3	2.7	2.8	-6.8	-5.3	0.5	-1.2	-0.9
Goods-producing sector									
Goods-producing sector	153.3	154.2	1.9	0.9	-2.9	-3.4	0.6	-1.8	-2.2
Agriculture	43.3	42.7	1.2	-0.6	0.6	0.7	-1.4	1.4	1.7
Forestry, fishing, mining, quarrying, oil and gas extraction ²	25.6	24.7	0.8	-0.9	-1.6	-2.0	-3.5	-6.1	-7.5
Utilities	6.8	7.3	0.3	0.5	1.0	0.7	7.4	15.9	10.6
Construction	52.1	54.6	1.3	2.5	-1.2	-1.7	4.8	-2.2	-3.0
Manufacturing	25.5	24.9	0.8	-0.6	-1.7	-1.2	-2.4	-6.4	-4.6
Services-producing sector									
Services-producing sector	412.2	414.1	2.4	1.9	-3.9	-1.9	0.5	-0.9	-0.5
Wholesale and retail trade	84.3	85.4	1.4	1.1	0.0	1.6	1.3	0.0	1.9
Transportation and warehousing	27.0	27.2	0.8	0.2	-2.8	-1.9	0.7	-9.3	-6.5
Finance, insurance, real estate, rental and leasing	30.1	30.2	0.6	0.1	-0.9	-0.5	0.3	-2.9	-1.6
Professional, scientific and technical services	27.0	27.0	0.7	0.0	0.2	2.1	0.0	0.7	8.4
Business, building and other support services	12.7	13.1	0.8	0.4	-0.8	-2.2	3.1	-5.8	-14.4
Educational services	39.2	40.5	1.1	1.3	-1.0	-4.1	3.3	-2.4	-9.2
Health care and social assistance	79.6	79.4	1.1	-0.2	0.6	3.1	-0.3	0.8	4.1
Information, culture and recreation	20.9	20.1	0.7	-0.8	-0.5	2.2	-3.8	-2.4	12.3
Accommodation and food services	36.6	37.5	1.1	0.9	-0.7	0.7	2.5	-1.8	1.9
Other services (except public administration)	27.0	25.5	0.8	-1.5	1.5	-0.2	-5.6	6.2	-0.8
Public administration	27.8	28.2	0.7	0.4	0.7	-2.7	1.4	2.5	-8.7

1. Average standard error of change in two consecutive months (see "Sampling Errors" in Data Quality for further explanations).

2. Also referred to as Natural resources.

Note(s): Related CANSIM Tables 282-0087, 282-0088. The sum of individual categories may not always add to the total due to rounding.

Table 4-9
Selected labour force characteristics (seasonally adjusted) — Alberta

	February 2016	March 2016	S.E. ¹	Change from			Percent change from		
				last month	last December	twelve months ago	last month	last December	twelve months ago
in thousands (except rates)									
Both sexes, 15 years and over									
Population	3,385.6	3,389.6	...	4.0	10.6	57.0	0.1	0.3	1.7
Labour force	2,471.9	2,471.1	9.8	-0.8	14.0	32.2	0.0	0.6	1.3
Employment	2,277.5	2,296.4	9.8	18.9	10.3	-5.6	0.8	0.5	-0.2
Employment full-time	1,869.0	1,883.5	14.1	14.5	2.6	-24.7	0.8	0.1	-1.3
Unemployment	194.3	174.7	8.1	-19.6	3.7	37.9	-10.1	2.2	27.7
Participation rate	73.0	72.9	0.3	-0.1	0.2	-0.3
Unemployment rate	7.9	7.1	0.3	-0.8	0.1	1.5
Employment rate	67.3	67.7	0.3	0.4	0.0	-1.4
Part-time rate	17.9	18.0	0.6	0.0	0.3	0.9
Both sexes, 15 to 24 years									
Population	519.2	518.7	...	-0.5	-2.2	-4.6	-0.1	-0.4	-0.9
Labour force	350.4	355.2	5.5	4.8	7.2	-5.2	1.4	2.1	-1.4
Employment	308.3	316.3	5.3	8.0	6.9	-6.8	2.6	2.2	-2.1
Unemployment	42.1	38.9	4.6	-3.2	0.3	1.6	-7.6	0.8	4.3
Participation rate	67.5	68.5	1.1	1.0	1.7	-0.4
Unemployment rate	12.0	11.0	1.2	-1.0	-0.1	0.7
Employment rate	59.4	61.0	1.0	1.6	1.6	-0.7
Part-time rate	39.1	40.2	2.0	1.1	-2.3	3.5
Men, 25 years and over									
Population	1,449.4	1,451.5	...	2.1	5.8	30.6	0.1	0.4	2.2
Labour force	1,162.8	1,161.6	5.2	-1.2	-3.3	10.8	-0.1	-0.3	0.9
Employment	1,076.9	1,081.6	5.9	4.7	-2.0	-14.3	0.4	-0.2	-1.3
Unemployment	85.9	80.0	5.0	-5.9	-1.3	25.1	-6.9	-1.6	45.7
Participation rate	80.2	80.0	0.4	-0.2	-0.6	-1.0
Unemployment rate	7.4	6.9	0.4	-0.5	-0.1	2.1
Employment rate	74.3	74.5	0.4	0.2	-0.5	-2.6
Part-time rate	7.8	7.1	0.5	-0.8	0.2	0.5
Women, 25 years and over									
Population	1,417.0	1,419.4	...	2.4	7.1	31.0	0.2	0.5	2.2
Labour force	958.6	954.3	5.7	-4.3	10.1	26.7	-0.4	1.1	2.9
Employment	892.3	898.5	6.0	6.2	5.4	15.4	0.7	0.6	1.7
Unemployment	66.3	55.8	4.2	-10.5	4.7	11.2	-15.8	9.2	25.1
Participation rate	67.6	67.2	0.4	-0.4	0.3	0.4
Unemployment rate	6.9	5.8	0.4	-1.1	0.4	1.0
Employment rate	63.0	63.3	0.4	0.3	0.1	-0.3
Part-time rate	22.8	23.3	1.0	0.5	1.0	0.3
Industry	2,277.5	2,296.4	9.8	18.9	10.3	-5.6	0.8	0.5	-0.2
Goods-producing sector	606.9	601.6	6.8	-5.3	-21.5	-50.2	-0.9	-3.5	-7.7
Agriculture	52.3	48.6	2.8	-3.7	-9.4	-15.6	-7.1	-16.2	-24.3
Forestry, fishing, mining, quarrying, oil and gas extraction ²	148.4	149.2	3.4	0.8	-2.6	-17.4	0.5	-1.7	-10.4
Utilities	21.0	21.9	1.1	0.9	2.5	2.2	4.3	12.9	11.2
Construction	259.8	264.3	4.8	4.5	8.1	4.0	1.7	3.2	1.5
Manufacturing	125.4	117.5	3.2	-7.9	-20.2	-23.5	-6.3	-14.7	-16.7
Services-producing sector	1,670.6	1,694.8	9.2	24.2	31.8	44.6	1.4	1.9	2.7
Wholesale and retail trade	324.5	338.9	5.0	14.4	15.0	28.6	4.4	4.6	9.2
Transportation and warehousing	128.1	131.6	3.1	3.5	4.1	-16.4	2.7	3.2	-11.1
Finance, insurance, real estate, rental and leasing	106.4	114.0	2.4	7.6	12.0	9.3	7.1	11.8	8.9
Professional, scientific and technical services	182.6	184.1	3.5	1.5	4.0	14.5	0.8	2.2	8.5
Business, building and other support services	79.4	78.3	3.1	-1.1	-4.0	-4.9	-1.4	-4.9	-5.9
Educational services	147.4	145.8	3.3	-1.6	-2.3	11.4	-1.1	-1.6	8.5
Health care and social assistance	271.0	270.3	3.7	-0.7	2.2	6.7	-0.3	0.8	2.5
Information, culture and recreation	81.1	77.4	3.2	-3.7	-5.6	7.4	-4.6	-6.7	10.6
Accommodation and food services	135.7	138.6	3.9	2.9	-2.2	-17.3	2.1	-1.6	-11.1
Other services (except public administration)	119.0	122.1	3.0	3.1	11.8	3.3	2.6	10.7	2.8
Public administration	95.2	93.7	2.2	-1.5	-3.1	2.2	-1.6	-3.2	2.4

1. Average standard error of change in two consecutive months (see "Sampling Errors" in Data Quality for further explanations).

2. Also referred to as Natural resources.

Note(s): Related CANSIM Tables 282-0087, 282-0088. The sum of individual categories may not always add to the total due to rounding.

Table 4-10
Selected labour force characteristics (seasonally adjusted) — British Columbia

	February 2016	March 2016	S.E. ¹	Change from			Percent change from		
				last month	last December	twelve months ago	last month	last December	twelve months ago
in thousands (except rates)									
Both sexes, 15 years and over									
Population	3,910.0	3,913.9	...	3.9	10.7	54.6	0.1	0.3	1.4
Labour force	2,518.0	2,524.1	10.5	6.1	20.9	93.7	0.2	0.8	3.9
Employment	2,351.0	2,360.0	10.6	9.0	24.3	72.1	0.4	1.0	3.2
Employment full-time	1,836.6	1,842.1	15.6	5.5	10.2	39.3	0.3	0.6	2.2
Unemployment	167.0	164.1	8.5	-2.9	-3.4	21.6	-1.7	-2.0	15.2
Participation rate	64.4	64.5	0.3	0.1	0.4	1.5
Unemployment rate	6.6	6.5	0.3	-0.1	-0.2	0.6
Employment rate	60.1	60.3	0.3	0.2	0.5	1.0
Part-time rate	21.9	21.9	0.6	0.1	0.4	0.7
Both sexes, 15 to 24 years									
Population	584.6	584.4	...	-0.2	-0.3	2.8	0.0	-0.1	0.5
Labour force	378.8	374.5	6.1	-4.3	0.3	19.4	-1.1	0.1	5.5
Employment	332.3	327.0	5.9	-5.3	-0.8	10.1	-1.6	-0.2	3.2
Unemployment	46.5	47.5	5.2	1.0	1.1	9.3	2.2	2.4	24.3
Participation rate	64.8	64.1	1.0	-0.7	0.1	3.0
Unemployment rate	12.3	12.7	1.4	0.4	0.3	1.9
Employment rate	56.8	56.0	1.0	-0.8	-0.1	1.5
Part-time rate	47.2	48.7	2.3	1.6	5.6	0.7
Men, 25 years and over									
Population	1,622.5	1,624.5	...	2.0	5.2	24.9	0.1	0.3	1.6
Labour force	1,132.3	1,137.5	5.6	5.2	12.4	37.4	0.5	1.1	3.4
Employment	1,062.0	1,069.1	5.9	7.1	12.3	29.0	0.7	1.2	2.8
Unemployment	70.3	68.3	4.9	-2.0	-0.1	8.3	-2.8	-0.1	13.8
Participation rate	69.8	70.0	0.4	0.2	0.5	1.2
Unemployment rate	6.2	6.0	0.4	-0.2	-0.1	0.5
Employment rate	65.5	65.8	0.4	0.3	0.5	0.8
Part-time rate	10.1	10.6	0.7	0.5	1.3	0.8
Women, 25 years and over									
Population	1,702.8	1,704.9	...	2.1	5.8	26.8	0.1	0.3	1.6
Labour force	1,007.0	1,012.1	6.2	5.1	8.3	36.9	0.5	0.8	3.8
Employment	956.8	963.8	6.1	7.0	12.7	32.9	0.7	1.3	3.5
Unemployment	50.2	48.3	4.7	-1.9	-4.4	4.0	-3.8	-8.3	9.0
Participation rate	59.1	59.4	0.4	0.3	0.3	1.3
Unemployment rate	5.0	4.8	0.5	-0.2	-0.5	0.3
Employment rate	56.2	56.5	0.4	0.3	0.5	1.0
Part-time rate	26.1	25.4	1.0	-0.7	-2.4	0.6
Industry	2,351.0	2,360.0	10.6	9.0	24.3	72.1	0.4	1.0	3.2
Goods-producing sector									
Agriculture	471.7	472.0	6.3	0.3	1.9	11.8	0.1	0.4	2.6
Forestry, fishing, mining, quarrying, oil and gas extraction ²	19.6	25.3	2.5	5.7	5.0	2.4	29.1	24.6	10.5
Utilities	54.1	53.0	2.6	-1.1	1.7	5.9	-2.0	3.3	12.5
Construction	13.4	14.1	0.9	0.7	-1.4	-0.6	5.2	-9.0	-4.1
Manufacturing	205.8	204.9	4.4	-0.9	2.9	1.1	-0.4	1.4	0.5
	178.8	174.6	3.5	-4.2	-6.4	2.9	-2.3	-3.5	1.7
Services-producing sector									
Wholesale and retail trade	1,879.3	1,888.0	10.3	8.7	22.4	60.3	0.5	1.2	3.3
Transportation and warehousing	387.1	377.3	5.6	-9.8	16.9	29.8	-2.5	4.7	8.6
Finance, insurance, real estate, rental and leasing	132.4	140.2	3.7	7.8	0.2	2.3	5.9	0.1	1.7
Professional, scientific and technical services	129.2	131.2	3.3	2.0	7.7	-2.9	1.5	6.2	-2.2
Business, building and other support services	189.9	194.0	3.9	4.1	4.8	3.3	2.2	2.5	1.7
Educational services	96.7	96.5	3.5	-0.2	1.3	7.7	-0.2	1.4	8.7
Health care and social assistance	164.0	166.2	3.6	2.2	-0.9	-0.6	1.3	-0.5	-0.4
Information, culture and recreation	291.8	295.5	4.2	3.7	0.1	25.4	1.3	0.0	9.4
Accommodation and food services	122.5	120.8	3.7	-1.7	1.2	8.2	-1.4	1.0	7.3
Other services (except public administration)	164.1	166.5	4.9	2.4	-2.5	-12.6	1.5	-1.5	-7.0
Public administration	103.0	100.5	3.1	-2.5	-7.7	-5.6	-2.4	-7.1	-5.3
	98.5	99.4	2.2	0.9	1.2	5.2	0.9	1.2	5.5

1. Average standard error of change in two consecutive months (see "Sampling Errors" in Data Quality for further explanations).

2. Also referred to as Natural resources.

Note(s): Related CANSIM Tables 282-0087, 282-0088. The sum of individual categories may not always add to the total due to rounding.

Table 5-1
Labour force characteristics by census metropolitan area (seasonally adjusted) — 3 month moving average

	February 2016	March 2016	S.E. ¹	Change from			Percent change from		
				last month	last December	twelve months ago	last month	last December	twelve months ago
in thousands (except rates)									
St. John's, Newfoundland and Labrador									
Population	180.0	180.3	...	0.3	0.8	2.3	0.2	0.4	1.3
Labour force	122.6	123.5	1.0	0.9	1.2	-2.5	0.7	1.0	-2.0
Employment	113.3	114.4	1.0	1.1	0.0	-3.6	1.0	0.0	-3.1
Unemployment	9.3	9.2	0.5	-0.1	1.4	1.2	-1.1	17.9	15.0
Participation rate	68.1	68.5	0.5	0.4	0.4	-2.3
Unemployment rate	7.6	7.4	0.4	-0.2	1.0	1.1
Employment rate	62.9	63.4	0.6	0.5	-0.3	-2.9
Halifax, Nova Scotia									
Population	351.4	351.9	...	0.5	1.3	5.2	0.1	0.4	1.5
Labour force	239.2	240.6	1.5	1.4	2.5	0.6	0.6	1.0	0.2
Employment	223.0	223.3	1.5	0.3	-0.1	-1.2	0.1	0.0	-0.5
Unemployment	16.2	17.3	0.7	1.1	2.6	1.8	6.8	17.7	11.6
Participation rate	68.1	68.4	0.4	0.3	0.5	-0.8
Unemployment rate	6.8	7.2	0.3	0.4	1.0	0.7
Employment rate	63.5	63.5	0.4	0.0	-0.2	-1.3
Moncton, New Brunswick									
Population	124.6	124.8	...	0.2	0.5	1.6	0.2	0.4	1.3
Labour force	83.0	83.6	1.0	0.6	-0.7	0.4	0.7	-0.8	0.5
Employment	77.5	77.7	1.0	0.2	-1.4	0.1	0.3	-1.8	0.1
Unemployment	5.5	5.8	0.4	0.3	0.6	0.1	5.5	11.5	1.8
Participation rate	66.6	67.0	0.8	0.4	-0.8	-0.5
Unemployment rate	6.6	6.9	0.5	0.3	0.7	0.0
Employment rate	62.2	62.3	0.8	0.1	-1.3	-0.7
Saint John, New Brunswick									
Population	105.4	105.4	...	0.0	0.0	-0.2	0.0	0.0	-0.2
Labour force	68.3	68.6	0.9	0.3	1.1	-1.0	0.4	1.6	-1.4
Employment	62.6	62.8	0.9	0.2	0.6	-0.5	0.3	1.0	-0.8
Unemployment	5.7	5.7	0.4	0.0	0.4	-0.5	0.0	7.5	-8.1
Participation rate	64.8	65.1	0.8	0.3	1.1	-0.8
Unemployment rate	8.3	8.3	0.6	0.0	0.4	-0.6
Employment rate	59.4	59.6	0.8	0.2	0.6	-0.3
Saguenay, Quebec									
Population	135.0	135.0	...	0.0	-0.1	-0.1	0.0	-0.1	-0.1
Labour force	83.5	83.1	1.0	-0.4	0.9	-1.1	-0.5	1.1	-1.3
Employment	76.5	75.5	1.0	-1.0	-0.6	-2.0	-1.3	-0.8	-2.6
Unemployment	7.1	7.6	0.4	0.5	1.5	0.9	7.0	24.6	13.4
Participation rate	61.9	61.6	0.8	-0.3	0.8	-0.7
Unemployment rate	8.5	9.1	0.5	0.6	1.7	1.1
Employment rate	56.7	55.9	0.8	-0.8	-0.4	-1.5
Québec, Quebec									
Population	672.9	673.3	...	0.4	1.2	5.2	0.1	0.2	0.8
Labour force	462.8	456.1	4.1	-6.7	-12.0	-1.4	-1.4	-2.6	-0.3
Employment	439.3	432.8	4.1	-6.5	-12.5	-1.0	-1.5	-2.8	-0.2
Unemployment	23.5	23.3	1.5	-0.2	0.5	-0.3	-0.9	2.2	-1.3
Participation rate	68.8	67.7	0.6	-1.1	-1.9	-0.8
Unemployment rate	5.1	5.1	0.3	0.0	0.2	-0.1
Employment rate	65.3	64.3	0.6	-1.0	-2.0	-0.6
Sherbrooke, Quebec									
Population	180.4	180.6	...	0.2	0.5	2.0	0.1	0.3	1.1
Labour force	114.0	114.6	1.2	0.6	1.6	4.7	0.5	1.4	4.3
Employment	106.1	106.6	1.2	0.5	1.1	4.7	0.5	1.0	4.6
Unemployment	7.9	8.0	0.5	0.1	0.5	0.1	1.3	6.7	1.3
Participation rate	63.2	63.5	0.7	0.3	0.8	2.0
Unemployment rate	6.9	7.0	0.4	0.1	0.4	-0.2
Employment rate	58.8	59.0	0.6	0.2	0.4	1.9

See notes at the end of the table.

Table 5-1 – continued

Labour force characteristics by census metropolitan area (seasonally adjusted) — 3 month moving average

	February 2016	March 2016	S.E. ¹	Change from			Percent change from		
				last month	last December	twelve months ago	last month	last December	twelve months ago
in thousands (except rates)									
Trois-Rivières, Quebec									
Population	132.9	133.0	...	0.1	0.1	0.4	0.1	0.1	0.3
Labour force	80.9	80.9	1.0	0.0	0.1	3.9	0.0	0.1	5.1
Employment	75.6	75.8	1.0	0.2	0.9	3.6	0.3	1.2	5.0
Unemployment	5.3	5.1	0.4	-0.2	-0.8	0.4	-3.8	-13.6	8.5
Participation rate	60.9	60.8	0.8	-0.1	0.0	2.7
Unemployment rate	6.6	6.3	0.5	-0.3	-1.0	0.2
Employment rate	56.9	57.0	0.8	0.1	0.6	2.6
Montréal, Quebec									
Population	3,371.5	3,374.4	...	2.9	8.0	32.6	0.1	0.2	1.0
Labour force	2,242.0	2,239.2	8.9	-2.8	6.4	28.4	-0.1	0.3	1.3
Employment	2,047.0	2,048.0	9.1	1.0	9.2	7.9	0.0	0.5	0.4
Unemployment	194.9	191.2	5.2	-3.7	-2.8	20.5	-1.9	-1.4	12.0
Participation rate	66.5	66.4	0.3	-0.1	0.1	0.2
Unemployment rate	8.7	8.5	0.2	-0.2	-0.2	0.8
Employment rate	60.7	60.7	0.3	0.0	0.1	-0.3
Ottawa-Gatineau, Ontario/Quebec									
Population	1,104.3	1,105.4	...	1.1	3.0	12.1	0.1	0.3	1.1
Labour force	761.3	764.2	4.7	2.9	5.5	2.5	0.4	0.7	0.3
Employment	711.7	712.4	4.9	0.7	0.7	4.7	0.1	0.1	0.7
Unemployment	49.6	51.8	2.1	2.2	4.8	-2.2	4.4	10.2	-4.1
Participation rate	68.9	69.1	0.4	0.2	0.3	-0.6
Unemployment rate	6.5	6.8	0.3	0.3	0.6	-0.3
Employment rate	64.4	64.4	0.4	0.0	-0.2	-0.3
Ottawa-Gatineau, Quebec part, Ontario/Quebec									
Population	273.3	273.4	...	0.1	0.3	1.4	0.0	0.1	0.5
Labour force	189.0	186.7	1.6	-2.3	-6.1	-3.1	-1.2	-3.2	-1.6
Employment	177.1	174.5	1.7	-2.6	-6.8	-0.6	-1.5	-3.8	-0.3
Unemployment	11.9	12.3	0.7	0.4	0.8	-2.4	3.4	7.0	-16.3
Participation rate	69.2	68.3	0.6	-0.9	-2.3	-1.5
Unemployment rate	6.3	6.6	0.4	0.3	0.6	-1.1
Employment rate	64.8	63.8	0.6	-1.0	-2.6	-0.6
Ottawa-Gatineau, Ontario part, Ontario/Quebec									
Population	831.0	832.0	...	1.0	2.7	10.7	0.1	0.3	1.3
Labour force	572.3	577.5	4.4	5.2	11.7	5.6	0.9	2.1	1.0
Employment	534.6	538.0	4.6	3.4	7.6	5.4	0.6	1.4	1.0
Unemployment	37.7	39.5	2.0	1.8	4.0	0.2	4.8	11.3	0.5
Participation rate	68.9	69.4	0.5	0.5	1.2	-0.2
Unemployment rate	6.6	6.8	0.4	0.2	0.5	-0.1
Employment rate	64.3	64.7	0.6	0.4	0.7	-0.1
Kingston, Ontario									
Population	138.9	139.0	...	0.1	0.3	1.1	0.1	0.2	0.8
Labour force	89.7	89.6	0.9	-0.1	-0.6	3.0	-0.1	-0.7	3.5
Employment	84.3	84.2	0.9	-0.1	-0.2	3.5	-0.1	-0.2	4.3
Unemployment	5.4	5.4	0.4	0.0	-0.4	-0.4	0.0	-6.9	-6.9
Participation rate	64.6	64.5	0.6	-0.1	-0.5	1.7
Unemployment rate	6.0	6.0	0.4	0.0	-0.4	-0.7
Employment rate	60.7	60.6	0.6	-0.1	-0.3	2.1
Peterborough, Ontario									
Population	104.6	104.6	...	0.0	0.1	0.4	0.0	0.1	0.4
Labour force	63.8	63.3	1.2	-0.5	-1.4	-3.0	-0.8	-2.2	-4.5
Employment	60.0	60.6	1.3	0.6	0.8	-0.7	1.0	1.3	-1.1
Unemployment	3.8	2.7	0.6	-1.1	-2.2	-2.4	-28.9	-44.9	-47.1
Participation rate	61.0	60.5	1.2	-0.5	-1.4	-3.1
Unemployment rate	6.0	4.3	0.8	-1.7	-3.3	-3.4
Employment rate	57.4	57.9	1.2	0.5	0.7	-0.9

See notes at the end of the table.

Table 5-1 – continued

Labour force characteristics by census metropolitan area (seasonally adjusted) — 3 month moving average

	February 2016	March 2016	S.E. ¹	Change from			Percent change from		
				last month	last December	twelve months ago	last month	last December	twelve months ago
in thousands (except rates)									
Oshawa, Ontario									
Population	324.4	324.8	...	0.4	1.3	5.2	0.1	0.4	1.6
Labour force	223.5	224.5	2.0	1.0	6.6	7.7	0.4	3.0	3.6
Employment	209.9	210.9	2.2	1.0	8.0	10.2	0.5	3.9	5.1
Unemployment	13.6	13.6	1.0	0.0	-1.4	-2.5	0.0	-9.3	-15.5
Participation rate	68.9	69.1	0.6	0.2	1.7	1.3
Unemployment rate	6.1	6.1	0.5	0.0	-0.8	-1.3
Employment rate	64.7	64.9	0.7	0.2	2.2	2.1
Toronto, Ontario									
Population	5,153.1	5,160.4	...	7.3	20.8	87.0	0.1	0.4	1.7
Labour force	3,472.5	3,465.3	11.3	-7.2	3.9	118.2	-0.2	0.1	3.5
Employment	3,222.7	3,212.0	11.6	-10.7	-6.5	107.4	-0.3	-0.2	3.5
Unemployment	249.8	253.3	6.2	3.5	10.3	10.8	1.4	4.2	4.5
Participation rate	67.4	67.2	0.2	-0.2	-0.1	1.2
Unemployment rate	7.2	7.3	0.2	0.1	0.3	0.1
Employment rate	62.5	62.2	0.2	-0.3	-0.4	1.0
Hamilton, Ontario									
Population	646.5	647.1	...	0.6	1.7	7.0	0.1	0.3	1.1
Labour force	408.2	408.1	3.9	-0.1	-1.6	7.3	0.0	-0.4	1.8
Employment	383.4	384.1	4.0	0.7	-1.3	5.0	0.2	-0.3	1.3
Unemployment	24.8	24.0	1.5	-0.8	-0.3	2.3	-3.2	-1.2	10.6
Participation rate	63.1	63.1	0.6	0.0	-0.4	0.5
Unemployment rate	6.1	5.9	0.4	-0.2	0.0	0.5
Employment rate	59.3	59.4	0.6	0.1	-0.3	0.2
St. Catharines-Niagara, Ontario									
Population	344.0	344.1	...	0.1	0.3	1.3	0.0	0.1	0.4
Labour force	225.1	221.5	2.3	-3.6	-4.1	8.6	-1.6	-1.8	4.0
Employment	206.1	203.1	2.4	-3.0	-4.4	4.3	-1.5	-2.1	2.2
Unemployment	19.1	18.4	1.0	-0.7	0.3	4.4	-3.7	1.7	31.4
Participation rate	65.4	64.4	0.7	-1.0	-1.2	2.3
Unemployment rate	8.5	8.3	0.4	-0.2	0.3	1.7
Employment rate	59.9	59.0	0.7	-0.9	-1.4	1.0
Kitchener-Cambridge-Waterloo, Ontario									
Population	423.9	424.2	...	0.3	0.9	4.0	0.1	0.2	1.0
Labour force	301.6	303.6	2.8	2.0	5.1	1.2	0.7	1.7	0.4
Employment	283.0	285.5	3.0	2.5	6.1	-0.3	0.9	2.2	-0.1
Unemployment	18.7	18.1	1.0	-0.6	-1.0	1.6	-3.2	-5.2	9.7
Participation rate	71.1	71.6	0.7	0.5	1.1	-0.4
Unemployment rate	6.2	6.0	0.3	-0.2	-0.4	0.5
Employment rate	66.8	67.3	0.7	0.5	1.3	-0.7
Brantford, Ontario									
Population	112.4	112.5	...	0.1	0.3	1.0	0.1	0.3	0.9
Labour force	72.9	73.4	0.9	0.5	1.4	-4.2	0.7	1.9	-5.4
Employment	68.7	68.3	1.0	-0.4	-0.2	-5.2	-0.6	-0.3	-7.1
Unemployment	4.2	5.1	0.4	0.9	1.6	0.9	21.4	45.7	21.4
Participation rate	64.9	65.2	0.8	0.3	1.0	-4.4
Unemployment rate	5.8	6.9	0.5	1.1	2.0	1.5
Employment rate	61.1	60.7	0.9	-0.4	-0.4	-5.2
Guelph, Ontario									
Population	129.6	129.7	...	0.1	0.4	1.5	0.1	0.3	1.2
Labour force	100.4	101.4	1.1	1.0	4.1	7.3	1.0	4.2	7.8
Employment	96.5	96.9	1.2	0.4	3.7	7.2	0.4	4.0	8.0
Unemployment	3.9	4.5	0.4	0.6	0.4	0.1	15.4	9.8	2.3
Participation rate	77.5	78.2	0.9	0.7	2.9	4.8
Unemployment rate	3.9	4.4	0.5	0.5	0.2	-0.3
Employment rate	74.5	74.7	0.9	0.2	2.6	4.7

See notes at the end of the table.

Table 5-1 – continued

Labour force characteristics by census metropolitan area (seasonally adjusted) — 3 month moving average

	February 2016	March 2016	S.E. ¹	Change from			Percent change from		
				last month	last December	twelve months ago	last month	last December	twelve months ago
in thousands (except rates)									
London, Ontario									
Population	424.3	424.7	...	0.4	1.0	3.9	0.1	0.2	0.9
Labour force	271.2	270.0	2.7	-1.2	-2.2	3.0	-0.4	-0.8	1.1
Employment	253.9	252.3	2.8	-1.6	-3.1	3.2	-0.6	-1.2	1.3
Unemployment	17.4	17.8	1.1	0.4	1.1	-0.1	2.3	6.6	-0.6
Participation rate	63.9	63.6	0.6	-0.3	-0.6	0.1
Unemployment rate	6.4	6.6	0.4	0.2	0.5	-0.1
Employment rate	59.8	59.4	0.7	-0.4	-0.9	0.2
Windsor, Ontario									
Population	280.8	281.0	...	0.2	0.5	2.0	0.1	0.2	0.7
Labour force	169.8	171.0	1.9	1.2	1.5	-8.7	0.7	0.9	-4.8
Employment	156.6	159.0	1.9	2.4	5.9	-0.8	1.5	3.9	-0.5
Unemployment	13.1	12.0	1.0	-1.1	-4.4	-7.9	-8.4	-26.8	-39.7
Participation rate	60.5	60.9	0.7	0.4	0.5	-3.5
Unemployment rate	7.7	7.0	0.6	-0.7	-2.7	-4.1
Employment rate	55.8	56.6	0.7	0.8	2.0	-0.7
Barrie, Ontario									
Population	168.7	168.9	...	0.2	0.7	2.7	0.1	0.4	1.6
Labour force	116.6	118.7	1.7	2.1	7.0	-1.2	1.8	6.3	-1.0
Employment	108.8	109.7	1.9	0.9	5.1	-2.3	0.8	4.9	-2.1
Unemployment	7.8	9.0	0.8	1.2	1.8	1.0	15.4	25.0	12.5
Participation rate	69.1	70.3	1.0	1.2	3.9	-1.8
Unemployment rate	6.7	7.6	0.7	0.9	1.2	0.9
Employment rate	64.5	64.9	1.1	0.4	2.7	-2.5
Greater Sudbury, Ontario									
Population	140.1	140.1	...	0.0	0.0	0.3	0.0	0.0	0.2
Labour force	86.6	87.6	0.9	1.0	1.0	-2.5	1.2	1.2	-2.8
Employment	79.5	80.2	0.9	0.7	0.9	-4.0	0.9	1.1	-4.8
Unemployment	7.2	7.5	0.4	0.3	0.2	1.6	4.2	2.7	27.1
Participation rate	61.8	62.5	0.6	0.7	0.7	-1.9
Unemployment rate	8.3	8.6	0.4	0.3	0.2	2.1
Employment rate	56.7	57.2	0.7	0.5	0.6	-3.0
Thunder Bay, Ontario									
Population	104.6	104.6	...	0.0	0.0	0.0	0.0	0.0	0.0
Labour force	64.8	65.5	0.7	0.7	2.1	2.1	1.1	3.3	3.3
Employment	60.2	60.5	0.7	0.3	0.8	-0.2	0.5	1.3	-0.3
Unemployment	4.6	5.0	0.2	0.4	1.3	2.3	8.7	35.1	85.2
Participation rate	62.0	62.6	0.6	0.6	2.0	2.0
Unemployment rate	7.1	7.6	0.4	0.5	1.8	3.3
Employment rate	57.6	57.8	0.7	0.2	0.7	-0.2
Winnipeg, Manitoba									
Population	658.0	658.8	...	0.8	2.2	9.2	0.1	0.3	1.4
Labour force	452.8	453.6	1.4	0.8	0.6	4.5	0.2	0.1	1.0
Employment	424.0	424.9	1.4	0.9	-0.2	4.2	0.2	0.0	1.0
Unemployment	28.8	28.7	0.8	-0.1	0.8	0.3	-0.3	2.9	1.1
Participation rate	68.8	68.9	0.2	0.1	-0.1	-0.2
Unemployment rate	6.4	6.3	0.2	-0.1	0.1	0.0
Employment rate	64.4	64.5	0.2	0.1	-0.2	-0.3
Regina, Saskatchewan									
Population	200.2	200.4	...	0.2	0.6	3.5	0.1	0.3	1.8
Labour force	145.1	145.1	1.0	0.0	-0.5	0.2	0.0	-0.3	0.1
Employment	138.4	138.0	1.1	-0.4	-1.5	0.0	-0.3	-1.1	0.0
Unemployment	6.7	7.2	0.4	0.5	1.1	0.3	7.5	18.0	4.3
Participation rate	72.5	72.4	0.5	-0.1	-0.5	-1.2
Unemployment rate	4.6	5.0	0.3	0.4	0.8	0.2
Employment rate	69.1	68.9	0.5	-0.2	-0.9	-1.2

See notes at the end of the table.

Table 5-1 – continued

Labour force characteristics by census metropolitan area (seasonally adjusted) — 3 month moving average

	February 2016	March 2016	S.E. ¹	Change from			Percent change from		
				last month	last December	twelve months ago	last month	last December	twelve months ago
in thousands (except rates)									
Saskatoon, Saskatchewan									
Population	255.6	256.0	...	0.4	1.2	5.9	0.2	0.5	2.4
Labour force	179.3	179.7	1.2	0.4	-3.6	1.0	0.2	-2.0	0.6
Employment	168.1	168.2	1.3	0.1	-3.3	-1.1	0.1	-1.9	-0.6
Unemployment	11.3	11.5	0.6	0.2	-0.3	2.1	1.8	-2.5	22.3
Participation rate	70.1	70.2	0.5	0.1	-1.7	-1.3
Unemployment rate	6.3	6.4	0.3	0.1	0.0	1.1
Employment rate	65.8	65.7	0.5	-0.1	-1.6	-2.0
Calgary, Alberta									
Population	1,195.1	1,197.0	...	1.9	5.2	28.3	0.2	0.4	2.4
Labour force	872.9	879.4	4.5	6.5	17.0	10.3	0.7	2.0	1.2
Employment	799.3	803.3	4.6	4.0	1.1	-18.1	0.5	0.1	-2.2
Unemployment	73.6	76.0	2.5	2.4	15.9	28.2	3.3	26.5	59.0
Participation rate	73.0	73.5	0.4	0.5	1.1	-0.9
Unemployment rate	8.4	8.6	0.3	0.2	1.6	3.1
Employment rate	66.9	67.1	0.4	0.2	-0.2	-3.2
Edmonton, Alberta									
Population	1,113.8	1,115.4	...	1.6	4.1	23.3	0.1	0.4	2.1
Labour force	835.0	839.8	4.4	4.8	12.2	42.1	0.6	1.5	5.3
Employment	778.1	781.6	4.6	3.5	5.8	27.4	0.4	0.7	3.6
Unemployment	57.0	58.3	2.2	1.3	6.5	14.9	2.3	12.5	34.3
Participation rate	75.0	75.3	0.4	0.3	0.8	2.3
Unemployment rate	6.8	6.9	0.3	0.1	0.6	1.5
Employment rate	69.9	70.1	0.4	0.2	0.3	1.0
Kelowna, British Columbia									
Population	154.0	154.2	...	0.2	0.7	2.8	0.1	0.5	1.8
Labour force	98.0	98.6	2.0	0.6	1.1	2.4	0.6	1.1	2.5
Employment	90.1	90.4	2.0	0.3	-0.5	-2.0	0.3	-0.6	-2.2
Unemployment	7.9	8.2	0.6	0.3	1.6	4.4	3.8	24.2	115.8
Participation rate	63.6	63.9	1.3	0.3	0.4	0.4
Unemployment rate	8.1	8.3	0.6	0.2	1.5	4.3
Employment rate	58.5	58.6	1.3	0.1	-0.6	-2.4
Abbotsford-Mission, British Columbia									
Population	146.4	146.6	...	0.2	0.6	2.4	0.1	0.4	1.7
Labour force	96.7	95.7	0.9	-1.0	-2.1	-0.5	-1.0	-2.1	-0.5
Employment	89.8	88.9	1.0	-0.9	-1.5	-1.8	-1.0	-1.7	-2.0
Unemployment	6.9	6.7	0.4	-0.2	-0.7	1.2	-2.9	-9.5	21.8
Participation rate	66.1	65.3	0.6	-0.8	-1.7	-1.4
Unemployment rate	7.1	7.0	0.4	-0.1	-0.6	1.3
Employment rate	61.3	60.6	0.7	-0.7	-1.3	-2.3
Vancouver, British Columbia									
Population	2,151.4	2,153.7	...	2.3	7.2	38.0	0.1	0.3	1.8
Labour force	1,426.1	1,431.8	6.0	5.7	13.6	72.3	0.4	1.0	5.3
Employment	1,339.0	1,341.8	6.1	2.8	4.8	63.8	0.2	0.4	5.0
Unemployment	87.1	90.0	3.1	2.9	8.8	8.5	3.3	10.8	10.4
Participation rate	66.3	66.5	0.3	0.2	0.4	2.2
Unemployment rate	6.1	6.3	0.2	0.2	0.6	0.3
Employment rate	62.2	62.3	0.3	0.1	0.0	1.9
Victoria, British Columbia									
Population	305.5	305.7	...	0.2	0.6	3.7	0.1	0.2	1.2
Labour force	192.9	192.3	1.8	-0.6	-2.5	9.4	-0.3	-1.3	5.1
Employment	181.7	180.6	1.9	-1.1	-2.4	7.1	-0.6	-1.3	4.1
Unemployment	11.2	11.6	0.7	0.4	-0.2	2.2	3.6	-1.7	23.4
Participation rate	63.1	62.9	0.6	-0.2	-0.9	2.3
Unemployment rate	5.8	6.0	0.4	0.2	-0.1	0.9
Employment rate	59.5	59.1	0.6	-0.4	-0.9	1.6

1. Average standard error of change in two consecutive months (see "Sampling Errors" in Data Quality for further explanations).

Note(s): Estimates in this table are based on 2011 Census boundaries. Related CANSIM Table 282-0135. The sum of individual categories may not always add to the total due to rounding.

Table 5-2
Labour force characteristics by census metropolitan area (seasonally adjusted) — Monthly

	February 2016	March 2016	S.E. ¹	Change from			Percent change from		
				last month	last December	twelve months ago	last month	last December	twelve months ago
in thousands (except rates)									
Montréal, Quebec									
Population	3,374.4	3,377.4	...	3.0	8.7	33.1	0.1	0.3	1.0
Labour force	2,239.7	2,237.6	19.3	-2.1	-8.4	16.5	-0.1	-0.4	0.7
Employment	2,043.6	2,051.2	19.4	7.6	2.8	9.4	0.4	0.1	0.5
Unemployment	196.1	186.3	12.6	-9.8	-11.3	7.0	-5.0	-5.7	3.9
Participation rate	66.4	66.3	0.6	-0.1	-0.4	-0.1
Unemployment rate	8.8	8.3	0.5	-0.5	-0.5	0.2
Employment rate	60.6	60.7	0.6	0.1	-0.1	-0.4
Toronto, Ontario									
Population	5,160.5	5,167.8	...	7.3	22.0	87.6	0.1	0.4	1.7
Labour force	3,457.3	3,455.1	24.1	-2.2	-21.7	93.7	-0.1	-0.6	2.8
Employment	3,202.2	3,198.0	23.9	-4.2	-32.2	77.0	-0.1	-1.0	2.5
Unemployment	255.2	257.1	15.1	1.9	10.5	16.6	0.7	4.3	6.9
Participation rate	67.0	66.9	0.5	-0.1	-0.7	0.7
Unemployment rate	7.4	7.4	0.4	0.0	0.3	0.2
Employment rate	62.1	61.9	0.5	-0.2	-0.9	0.5
Vancouver, British Columbia									
Population	2,153.7	2,156.0	...	2.3	6.9	37.3	0.1	0.3	1.8
Labour force	1,437.2	1,437.9	12.8	0.7	17.2	81.3	0.0	1.2	6.0
Employment	1,345.0	1,344.1	13.1	-0.9	8.5	67.4	-0.1	0.6	5.3
Unemployment	92.3	93.8	7.8	1.5	8.7	13.8	1.6	10.2	17.2
Participation rate	66.7	66.7	0.6	0.0	0.6	2.7
Unemployment rate	6.4	6.5	0.6	0.1	0.5	0.6
Employment rate	62.5	62.3	0.6	-0.2	0.2	2.0

1. Average standard error of change in two consecutive months (see "Sampling Errors" in Data Quality for further explanations).

Note(s): Estimates in this table are based on 2011 Census boundaries. Related CANSIM Table 282-0136. The sum of individual categories may not always add to the total due to rounding.

Table 6-1

Labour force characteristics by province and economic region, ¹ unadjusted for seasonality, 3 month moving average ending in March 2015 and March 2016

	Population	Labour force			Participation rate	Unemployment rate	Employment rate
		Labour force	Employment	Unemployment			
		in thousands					
Canada							
2015	29,161.1	18,926.3	17,565.3	1,361.0	64.9	7.2	60.2
2016	29,465.9	19,159.7	17,695.2	1,464.5	65.0	7.6	60.1
Newfoundland and Labrador							
2015	443.2	262.5	224.9	37.6	59.2	14.3	50.7
2016	443.5	261.3	219.5	41.8	58.9	16.0	49.5
<i>Avalon Peninsula [1010]</i>							
2015	232.5	153.4	138.9	14.5	66.0	9.5	59.7
2016	234.1	148.7	132.3	16.4	63.5	11.0	56.5
<i>South Coast-Burin Peninsula and Notre Dame-Central Bonavista Bay [1020, 1040]</i>							
2015	123.3	62.2	47.5	14.7	50.4	23.6	38.5
2016	122.3	61.2	46.2	15.0	50.0	24.5	37.8
<i>West Coast-Northern Peninsula-Labrador [1030]</i>							
2015	87.5	46.9	38.5	8.4	53.6	17.9	44.0
2016	87.1	51.3	41.0	10.4	58.9	20.3	47.1
Prince Edward Island							
2015	120.8	79.7	69.4	10.4	66.0	13.0	57.5
2016	121.3	77.6	67.4	10.2	64.0	13.1	55.6
Nova Scotia							
2015	784.2	481.0	433.7	47.3	61.3	9.8	55.3
2016	787.4	478.3	430.6	47.7	60.7	10.0	54.7
<i>Cape Breton [1210]</i>							
2015	107.4	59.8	50.1	9.7	55.7	16.2	46.6
2016	106.4	54.5	43.9	10.6	51.2	19.4	41.3
<i>North Shore [1220]</i>							
2015	129.0	72.7	63.4	9.3	56.4	12.8	49.1
2016	128.5	73.3	65.8	7.5	57.0	10.2	51.2
<i>Annapolis Valley [1230]</i>							
2015	102.5	57.6	51.5	6.1	56.2	10.6	50.2
2016	102.7	59.1	53.9	5.2	57.5	8.8	52.5
<i>Southern [1240]</i>							
2015	98.5	54.1	47.5	6.6	54.9	12.2	48.2
2016	98.0	53.3	47.3	6.0	54.4	11.3	48.3
<i>Halifax [1250]</i>							
2015	346.7	236.9	221.3	15.7	68.3	6.6	63.8
2016	351.9	238.0	219.7	18.3	67.6	7.7	62.4
New Brunswick							
2015	622.1	384.5	340.1	44.4	61.8	11.5	54.7
2016	622.6	376.3	333.9	42.4	60.4	11.3	53.6
<i>Campbellton-Miramichi [1310]</i>							
2015	129.5	69.6	55.5	14.1	53.7	20.3	42.9
2016	128.7	67.9	55.3	12.6	52.8	18.6	43.0
<i>Moncton-Richibucto [1320]</i>							
2015	176.4	113.9	103.6	10.3	64.6	9.0	58.7
2016	177.6	110.4	100.4	10.0	62.2	9.1	56.5
<i>Saint John-St. Stephen [1330]</i>							
2015	142.4	88.6	79.9	8.7	62.2	9.8	56.1
2016	141.9	87.9	79.1	8.9	61.9	10.1	55.7
<i>Fredericton-Oromocto [1340]</i>							
2015	109.6	71.4	64.9	6.4	65.1	9.0	59.2
2016	110.7	71.3	64.1	7.2	64.4	10.1	57.9

See notes at the end of the table.

Table 6-1 – continued

Labour force characteristics by province and economic region, ¹ unadjusted for seasonality, 3 month moving average ending in March 2015 and March 2016

	Population	Labour force			Participation rate	Unemployment rate	Employment rate
		Labour force	Employment	Unemployment			
	in thousands			percent			
Edmundston-Woodstock [1350]							
2015	64.2	40.9	36.1	4.8	63.7	11.7	56.2
2016	63.7	38.8	35.1	3.7	60.9	9.5	55.1
Quebec							
2015	6,827.6	4,351.6	3,997.5	354.0	63.7	8.1	58.5
2016	6,869.6	4,378.2	4,016.2	362.0	63.7	8.3	58.5
Gaspésie-Îles-de-la-Madeleine [2410]							
2015	78.4	38.9	30.6	8.3	49.6	21.3	39.0
2016	77.6	39.8	32.0	7.8	51.3	19.6	41.2
Bas-Saint-Laurent [2415]							
2015	170.3	88.5	79.0	9.4	52.0	10.6	46.4
2016	169.4	94.1	85.5	8.6	55.5	9.1	50.5
Capitale-Nationale [2420]							
2015	615.1	412.8	387.8	25.0	67.1	6.1	63.0
2016	619.7	416.8	394.1	22.7	67.3	5.4	63.6
Chaudière-Appalaches [2425]							
2015	349.1	228.6	215.3	13.3	65.5	5.8	61.7
2016	349.5	227.1	211.0	16.2	65.0	7.1	60.4
Estrie [2430]							
2015	268.7	166.6	154.1	12.6	62.0	7.6	57.4
2016	270.2	164.3	152.2	12.1	60.8	7.4	56.3
Centre-du-Québec [2433]							
2015	200.2	122.5	111.9	10.5	61.2	8.6	55.9
2016	200.8	120.5	111.7	8.7	60.0	7.2	55.6
Montérégie [2435]							
2015	1,247.8	800.8	752.8	48.0	64.2	6.0	60.3
2016	1,256.1	830.8	775.4	55.4	66.1	6.7	61.7
Montréal [2440]							
2015	1,658.3	1,045.9	939.9	105.9	63.1	10.1	56.7
2016	1,674.5	1,059.2	941.9	117.2	63.3	11.1	56.2
Laval [2445]							
2015	350.6	240.6	225.4	15.2	68.6	6.3	64.3
2016	353.7	220.2	202.6	17.6	62.3	8.0	57.3
Lanaudière [2450]							
2015	410.2	274.1	250.8	23.3	66.8	8.5	61.1
2016	413.4	264.7	246.9	17.9	64.0	6.8	59.7
Laurentides [2455]							
2015	490.8	324.5	298.4	26.2	66.1	8.1	60.8
2016	496.0	326.8	307.3	19.4	65.9	5.9	62.0
Outaouais [2460]							
2015	317.6	208.9	190.5	18.4	65.8	8.8	60.0
2016	319.5	212.4	196.4	16.0	66.5	7.5	61.5
Abitibi-Témiscamingue [2465]							
2015	120.5	77.0	70.6	6.4	63.9	8.3	58.6
2016	120.5	77.1	71.4	5.7	64.0	7.4	59.3
Mauricie [2470]							
2015	225.8	127.5	116.4	11.2	56.5	8.8	51.6
2016	225.3	130.8	117.6	13.2	58.1	10.1	52.2
Saguenay-Lac-Saint-Jean [2475]							
2015	232.2	140.2	126.6	13.6	60.4	9.7	54.5
2016	231.6	137.0	120.4	16.6	59.2	12.1	52.0

See notes at the end of the table.

Table 6-1 – continued

Labour force characteristics by province and economic region, ¹ unadjusted for seasonality, 3 month moving average ending in March 2015 and March 2016

	Population	Labour force			Participation rate	Unemployment rate	Employment rate
		Labour force	Employment	Unemployment			
	in thousands			percent			
Côte-Nord and Nord-du-Québec [2480, 2490]							
2015	92.0	54.2	47.4	6.8	58.9	12.5	51.5
2016	91.8	56.7	49.8	6.9	61.8	12.2	54.2
Ontario							
2015	11,338.2	7,298.7	6,783.7	515.1	64.4	7.1	59.8
2016	11,466.1	7,384.5	6,872.4	512.1	64.4	6.9	59.9
Ottawa [3510]							
2015	1,093.3	731.9	680.3	51.6	66.9	7.1	62.2
2016	1,103.6	732.7	680.8	52.0	66.4	7.1	61.7
Kingston-Pembroke [3515]							
2015	376.7	218.5	199.6	18.9	58.0	8.6	53.0
2016	377.7	215.1	198.5	16.6	56.9	7.7	52.6
Muskoka-Kawartha [3520]							
2015	325.4	204.7	187.0	17.7	62.9	8.6	57.5
2016	327.4	173.1	163.4	9.7	52.9	5.6	49.9
Toronto [3530]							
2015	5,325.4	3,459.4	3,212.2	247.2	65.0	7.1	60.3
2016	5,412.4	3,572.3	3,320.6	251.7	66.0	7.0	61.4
Kitchener-Waterloo-Barrie [3540]							
2015	1,072.1	740.9	698.3	42.5	69.1	5.7	65.1
2016	1,085.6	754.5	709.4	45.0	69.5	6.0	65.3
Hamilton-Niagara Peninsula [3550]							
2015	1,194.4	741.5	695.0	46.5	62.1	6.3	58.2
2016	1,205.3	758.0	704.8	53.2	62.9	7.0	58.5
London [3560]							
2015	552.0	340.0	317.6	22.4	61.6	6.6	57.5
2016	556.1	347.7	326.0	21.7	62.5	6.2	58.6
Windsor-Sarnia [3570]							
2015	524.1	329.6	298.6	31.0	62.9	9.4	57.0
2016	524.6	311.5	288.5	23.0	59.4	7.4	55.0
Stratford-Bruce Peninsula [3580]							
2015	245.6	161.8	152.2	9.6	65.9	5.9	62.0
2016	246.0	151.6	142.1	9.5	61.6	6.3	57.8
Northeast [3590]							
2015	457.4	268.9	247.1	21.9	58.8	8.1	54.0
2016	456.3	260.3	239.1	21.2	57.0	8.1	52.4
Northwest [3595]							
2015	171.8	101.7	95.8	5.9	59.2	5.8	55.8
2016	171.2	107.6	99.2	8.5	62.9	7.9	57.9
Manitoba							
2015	983.2	667.0	629.2	37.8	67.8	5.7	64.0
2016	994.0	664.8	623.9	40.9	66.9	6.2	62.8
Southeast [4610]							
2015	88.4	59.2	56.0	3.3	67.0	5.6	63.3
2016	90.3	61.6	58.1	3.5	68.2	5.7	64.3
South Central and North Central [4620, 4640]							
2015	84.0	57.5	55.7	1.8	68.5	3.1	66.3
2016	85.1	55.0	53.0	2.0	64.6	3.6	62.3
Southwest [4630]							
2015	87.8	59.0	57.0	2.1	67.2	3.6	64.9
2016	88.2	56.9	53.3	3.6	64.5	6.3	60.4

See notes at the end of the table.

Table 6-1 – continued

Labour force characteristics by province and economic region, 1 unadjusted for seasonality, 3 month moving average ending in March 2015 and March 2016

	Population	Labour force			Participation rate	Unemployment rate	Employment rate
		Labour force	Employment	Unemployment			
	in thousands			percent			
Winnipeg [4650]							
2015	591.8	406.1	380.1	26.0	68.6	6.4	64.2
2016	599.4	406.7	380.4	26.3	67.9	6.5	63.5
Interlake [4660]							
2015	74.6	46.8	44.5	2.3	62.7	4.9	59.7
2016	75.4	48.2	44.5	3.7	63.9	7.7	59.0
Parklands and Northern [4670, 4680]							
2015	56.6	38.3	35.9	2.4	67.7	6.3	63.4
2016	55.5	36.4	34.7	1.7	65.6	4.7	62.5
Saskatchewan							
2015	858.4	590.4	560.3	30.1	68.8	5.1	65.3
2016	865.9	598.5	559.2	39.3	69.1	6.6	64.6
Regina-Moose Mountain [4710]							
2015	261.6	188.1	179.1	9.0	71.9	4.8	68.5
2016	265.1	191.9	181.6	10.3	72.4	5.4	68.5
Swift Current-Moose Jaw [4720]							
2015	82.6	55.8	53.8	2.1	67.6	3.8	65.1
2016	82.3	54.7	52.2	2.5	66.5	4.6	63.4
Saskatoon-Biggar [4730]							
2015	293.1	203.6	192.6	11.0	69.5	5.4	65.7
2016	298.3	205.0	191.4	13.7	68.7	6.7	64.2
Yorkton-Melville [4740]							
2015	62.7	39.9	38.7	1.3	63.6	3.3	61.7
2016	62.1	37.8	34.6	3.2	60.9	8.5	55.7
Prince Albert and Northern [4750, 4760]							
2015	158.4	102.9	96.0	6.9	65.0	6.7	60.6
2016	158.1	109.0	99.4	9.6	68.9	8.8	62.9
Alberta							
2015	3,327.8	2,408.0	2,274.7	133.3	72.4	5.5	68.4
2016	3,385.6	2,448.6	2,253.7	194.9	72.3	8.0	66.6
Lethbridge-Medicine Hat [4810]							
2015	229.7	149.5	142.2	7.3	65.1	4.9	61.9
2016	230.3	157.8	146.4	11.4	68.5	7.2	63.6
Camrose-Drumheller [4820]							
2015	161.6	107.6	101.4	6.2	66.6	5.8	62.7
2016	161.7	105.6	98.1	7.5	65.3	7.1	60.7
Calgary [4830]							
2015	1,254.0	920.3	869.5	50.8	73.4	5.5	69.3
2016	1,283.1	929.6	847.8	81.8	72.4	8.8	66.1
Banff-Jasper-Rocky Mountain House and Athabasca-Grande Prairie-Peace River [4840, 4870]							
2015	276.4	203.6	193.2	10.4	73.7	5.1	69.9
2016	277.3	196.2	182.1	14.1	70.8	7.2	65.7
Red Deer [4850]							
2015	168.9	127.7	121.7	6.0	75.6	4.7	72.1
2016	171.8	117.3	107.3	10.0	68.3	8.5	62.5
Edmonton [4860]							
2015	1,120.7	808.4	762.4	46.0	72.1	5.7	68.0
2016	1,143.2	851.6	790.5	61.2	74.5	7.2	69.1
Wood Buffalo-Cold Lake [4880]							
2015	116.5	91.0	84.3	6.7	78.1	7.4	72.4
2016	118.3	90.5	81.6	8.9	76.5	9.8	69.0

See notes at the end of the table.

Table 6-1 – continued

Labour force characteristics by province and economic region, ¹ unadjusted for seasonality, 3 month moving average ending in March 2015 and March 2016

	Population	Labour force			Participation rate	Unemployment rate	Employment rate
		Labour force	Employment	Unemployment			
	in thousands			percent			
British Columbia							
2015	3,855.5	2,402.8	2,251.9	150.9	62.3	6.3	58.4
2016	3,909.9	2,491.7	2,318.4	173.3	63.7	7.0	59.3
Vancouver Island and Coast [5910]							
2015	652.6	375.1	352.3	22.8	57.5	6.1	54.0
2016	658.7	383.1	355.3	27.9	58.2	7.3	53.9
Lower Mainland-Southwest [5920]							
2015	2,402.2	1,518.9	1,425.3	93.6	63.2	6.2	59.3
2016	2,444.8	1,603.0	1,500.4	102.6	65.6	6.4	61.4
Thompson-Okanagan [5930]							
2015	429.9	261.1	241.0	20.0	60.7	7.7	56.1
2016	433.9	263.3	238.6	24.8	60.7	9.4	55.0
Kootenay [5940]							
2015	121.8	73.4	68.1	5.3	60.3	7.2	55.9
2016	122.1	72.5	67.2	5.3	59.4	7.3	55.0
Cariboo [5950]							
2015	127.1	85.0	80.3	4.7	66.9	5.5	63.2
2016	127.6	82.2	76.7	5.5	64.4	6.7	60.1
North Coast and Nechako [5960, 5970]							
2015	66.4	46.4	43.7	2.7	69.9	5.8	65.8
2016	66.6	44.1	41.1	3.0	66.2	6.8	61.7
Northeast [5980]							
2015	55.6	42.9	41.1	1.8	77.2	4.2	73.9
2016	56.1	43.4	39.2	4.2	77.4	9.7	69.9

1. For geographic descriptions of economic regions, refer to the Guide to the Labour Force Survey (catalogue number 71-543-GIE).

Note(s): Estimates in this table are based on 2011 Census boundaries. Related CANSIM table 282-0122.

Table 6-2
Labour force characteristics by territory (seasonally adjusted) - 3 month moving average

	February 2016	March 2016	S.E. ¹	Change from			Percent change from		
				last month	last December	twelve months ago	last month	last December	twelve months ago
in thousands (except rates)									
Yukon ²									
Population	28.2	28.2	...	0.0	0.0	0.3	0.0	0.0	1.1
Labour force	20.7	20.5	0.2	-0.2	-0.1	-0.4	-1.0	-0.5	-1.9
Employment	19.4	19.4	0.2	0.0	-0.1	-0.3	0.0	-0.5	-1.5
Unemployment	1.3	1.1	0.1	-0.2	-0.1	-0.1	-15.4	-8.3	-8.3
Participation rate	73.4	72.7	0.8	-0.7	-0.3	-2.2
Unemployment rate	6.3	5.4	0.7	-0.9	-0.4	-0.3
Employment rate	68.8	68.8	0.9	0.0	-0.3	-1.8
Northwest Territories ³									
Population	32.2	32.3	...	0.1	0.3	0.1	0.3	0.9	0.3
Labour force	24.5	24.5	0.2	0.0	0.3	0.7	0.0	1.2	2.9
Employment	22.4	22.7	0.3	0.3	1.0	0.8	1.3	4.6	3.7
Unemployment	2.1	1.8	0.2	-0.3	-0.6	-0.1	-14.3	-25.0	-5.3
Participation rate	76.1	75.9	0.8	-0.2	0.3	2.0
Unemployment rate	8.6	7.3	0.7	-1.3	-2.6	-0.7
Employment rate	69.6	70.3	0.8	0.7	2.5	2.3
Nunavut ⁴									
Population	24.1	24.1	...	0.0	0.0	0.6	0.0	0.0	2.6
Labour force	15.6	15.8	0.2	0.2	0.4	1.5	1.3	2.6	10.5
Employment	13.2	13.1	0.2	-0.1	0.3	0.5	-0.8	2.3	4.0
Unemployment	2.4	2.7	0.1	0.3	0.0	1.0	12.5	0.0	58.8
Participation rate	64.8	65.6	0.9	0.8	1.5	4.5
Unemployment rate	15.1	17.4	0.8	2.3	0.2	5.4
Employment rate	55.0	54.2	0.8	-0.8	1.1	0.4

1. Average standard error of change in two consecutive months (see "Sampling Errors" in Data Quality for further explanations).
2. Since 1992, the Labour force survey (LFS) has been conducted in the Yukon, using an alternative methodology that accommodates some of the operational difficulties inherent to remote locales. These estimates are not included in the national totals. In 1995, the LFS in the Yukon underwent a sample redesign. One result of the redesign was that the covered population increased from 85% to 92%, which is reflected by the sharp increase in the three month moving averages estimates of January, February and March of 1995 for all the level estimates. Users are therefore warned to be cautious when comparing estimates before January 1995 to estimates for January 1995 and forward.
3. Since 2001, the Labour force survey (LFS) has been administered in the Northwest Territories, using an alternative methodology that accommodates some of the operational difficulties inherent to remote locales. These estimates are not included in national totals.
4. Since 2004, the Labour force survey (LFS) has been administered in Nunavut, using an alternative methodology that accommodates some of the operational difficulties inherent to remote locales. These estimates are 3-month moving averages and are not included in national totals. From January 2004 to December 2007, estimates represent about 70% of all Nunavut residents aged 15 and over. Starting in January 2008, coverage was extended to 92%, so that by March 2008, the 3-month moving average is completely based on the extended coverage. Because of the large difference in coverage, users are recommended not to compare estimates prior to January 2008 with data afterwards. The January and February 2008 3-month moving average estimates are based on a mix of both coverages, since the extended coverage was introduced in January 2008. Estimates from January 2004 to December 2007 are based on the 10 largest communities in Nunavut: Iqaluit, Rankin Inlet, Cambridge Bay, Kugluktuk, Baker Lake, Arviat, Pond Inlet, Cape Dorset, Pangnirtung, Igloolik. Estimates from March 2008 to present cover the above communities as well as: Taloyoak, Gjoa Haven, Kugaaruk, Coral Harbour, Repulse Bay, Qikiqtarjuaq, Arctic Bay, Hall Beach, Clyde River.

Note(s): Related CANSIM table 282-0100.

Table 7
Average usual hours and wages of employees by selected characteristics, Canada, unadjusted for seasonality

	Employees				Full-time			Part-time		
	Number	Average weekly hours	Average weekly wages	Average hourly wages	Number	Average weekly hours	Average weekly wages	Number	Average weekly hours	Average weekly wages
	thousands		current dollars		thousands		current dollars	thousands		current dollars
March 2016										
15 years and over	14,972.9	34.9	939.30	25.83	12,062.8	39.2	1,090.66	2,910.1	17.1	311.89
15 to 24 years	2,208.5	25.5	403.81	14.71	1,003.3	38.5	663.17	1,205.2	14.7	187.90
25 years and over	12,764.4	36.5	1,031.95	27.75	11,059.5	39.3	1,129.44	1,704.9	18.8	399.54
Males	7,471.2	37.3	1,068.71	27.74	6,521.8	40.4	1,184.38	949.4	16.4	274.21
Females	7,501.7	32.5	810.42	23.92	5,541.1	37.8	980.36	1,960.7	17.4	330.13
Union coverage										
Union coverage	4,584.2	35.6	1,071.54	29.61	3,898.8	38.5	1,177.22	685.4	19.1	470.41
No union coverage	10,388.7	34.6	880.95	24.16	8,164.0	39.5	1,049.33	2,224.7	16.5	263.05
Job permanency										
Permanent	13,178.2	35.9	983.92	26.53	11,102.2	39.2	1,105.36	2,075.9	18.1	334.47
Temporary	1,794.7	27.6	611.68	20.65	960.6	38.9	920.79	834.1	14.5	255.70
Occupation										
Management occupations	895.2	39.7	1,614.03	40.78	867.9	40.3	1,645.50	27.3	19.9	614.09
Business, finance and administration occupations	2,634.7	35.2	932.65	25.92	2,259.7	38.2	1,030.52	375.1	17.0	343.05
Natural and applied sciences and related occupations	1,268.2	38.5	1,401.89	36.44	1,226.0	39.2	1,429.71	42.2	19.0	593.01
Health occupations	1,160.1	33.4	988.98	29.32	887.9	37.5	1,122.72	272.1	19.8	552.59
Occupations in education, law and social, community and government services	1,847.4	33.5	1,086.14	31.45	1,450.0	38.1	1,268.53	397.4	16.7	420.67
Occupations in art, culture, recreation and sport	306.7	29.0	718.02	22.67	192.7	38.6	1,009.16	114.0	12.9	226.09
Sales and service occupations	3,886.1	30.3	532.51	16.43	2,424.8	38.4	720.28	1,461.3	16.8	220.93
Trades, transport and equipment operators and related occupations	1,997.5	39.7	1,036.43	25.68	1,834.2	41.7	1,098.13	163.3	18.2	343.52
Natural resources, agriculture and related production occupations	223.8	41.6	1,012.82	23.40	197.7	45.1	1,116.34	26.1	15.2	228.65
Occupations in manufacturing and utilities	753.1	39.2	854.59	21.53	721.9	40.2	879.20	31.2	18.3	285.57
March 2015										
15 years and over	14,851.8	34.8	910.45	25.03	11,977.1	39.2	1,057.12	2,874.7	16.8	299.35
15 to 24 years	2,260.7	25.2	394.69	14.50	1,015.2	38.6	653.27	1,245.5	14.4	183.93
25 years and over	12,591.1	36.6	1,003.05	26.92	10,962.0	39.2	1,094.52	1,629.1	18.6	387.59
Males	7,403.3	37.3	1,036.42	26.86	6,471.7	40.4	1,148.26	931.7	15.9	259.56
Females	7,448.5	32.4	785.24	23.20	5,505.5	37.8	949.98	1,943.0	17.2	318.42
Union coverage										
Union coverage	4,593.3	35.6	1,040.73	28.72	3,926.7	38.5	1,140.64	666.7	18.6	452.21
No union coverage	10,258.4	34.5	852.11	23.37	8,050.4	39.5	1,016.38	2,208.0	16.2	253.19
Job permanency										
Permanent	13,066.3	35.9	952.24	25.68	11,027.1	39.2	1,069.41	2,039.3	17.7	318.66
Temporary	1,785.4	27.4	604.60	20.22	950.0	38.9	914.48	835.4	14.4	252.21
Occupation										
Management occupations	909.0	39.7	1,564.65	39.53	885.4	40.2	1,593.66	23.6	18.2	474.91
Business, finance and administration occupations	2,577.5	35.4	899.01	24.78	2,226.6	38.3	989.25	350.9	17.1	326.45
Natural and applied sciences and related occupations	1,156.1	38.6	1,328.45	34.39	1,128.7	39.1	1,347.80	27.5	18.0	532.63
Health occupations	1,053.3	33.6	974.84	28.82	804.3	37.8	1,106.51	249.0	19.9	549.44
Occupations in education, law and social, community and government services	1,874.1	33.3	1,036.04	30.16	1,464.6	37.9	1,209.97	409.4	16.5	413.88
Occupations in art, culture, recreation and sport	313.0	28.9	758.58	24.00	193.2	38.9	1,066.27	119.7	12.9	261.98
Sales and service occupations	3,953.7	30.1	534.86	16.51	2,473.2	38.4	726.22	1,480.5	16.4	215.19
Trades, transport and equipment operators and related occupations	2,048.7	39.7	1,010.79	25.03	1,893.5	41.5	1,068.16	155.2	17.4	310.93
Natural resources, agriculture and related production occupations	213.3	42.1	1,029.61	23.73	189.0	45.6	1,133.06	24.3	15.2	226.66
Occupations in manufacturing and utilities	753.0	39.0	843.83	21.37	718.5	40.0	870.22	34.5	18.7	294.32

Note(s): Related CANSIM table 282-0167.

Table 8
Regional unemployment rates used by the Employment Insurance program, ¹ seasonally adjusted, 3-month moving average

Region	Effective from April 10, 2016 to May 7, 2016
	percent
Newfoundland and Labrador	
01. St. John's, Newfoundland and Labrador	7.2
02. Newfoundland and Labrador ²	19.5
Prince Edward Island ³	
03. Charlottetown, Prince Edward Island	7.2
04. Prince Edward Island ⁴	13.8
Nova Scotia	
05. Eastern Nova Scotia	16.4
06. Western Nova Scotia	8.3
07. Halifax, Nova Scotia	7.2
New Brunswick	
08. Fredericton-Moncton-Saint John, New Brunswick	8.3
09. Madawaska-Charlotte, New Brunswick	9.6
10. Restigouche-Albert, New Brunswick	14.2
Quebec	
11. Gaspésie-Îles-de-la-Madeleine, Quebec	16.4
12. Quebec, Quebec	5.2
13. Trois-Rivières, Quebec	6.3
14. South Central Quebec	5.7
15. Sherbrooke, Quebec	7.4
16. Montérégie, Quebec	6.0
17. Montreal, Quebec	8.6
18. Central Quebec	6.7
19. North Western Quebec	9.0
20. Lower Saint Lawrence and North Shore, Quebec	9.7
21. Hull, Quebec	6.6
22. Chicoutimi-Jonquière, Quebec	9.1
Ontario	
23. Ottawa, Ontario	6.7
24. Eastern Ontario	8.1
25. Kingston, Ontario	6.0
26. Central Ontario	6.1
27. Oshawa, Ontario	6.1
28. Toronto, Ontario	7.3
29. Hamilton, Ontario	5.8
30. St. Catharines, Ontario	8.3
31. London, Ontario	6.6
32. Niagara, Ontario	8.0
33. Windsor, Ontario	7.3
34. Kitchener, Ontario	6.1
35. Huron, Ontario	7.4
36. South Central Ontario	4.8
37. Sudbury, Ontario	8.5
38. Thunder Bay, Ontario	7.5
39. Northern Ontario	11.9
Manitoba	
40. Winnipeg, Manitoba	6.2
41. Southern Manitoba	6.7
42. Northern Manitoba	34.7
Saskatchewan	
43. Regina, Saskatchewan	4.5
44. Saskatoon, Saskatchewan	6.4
45. Southern Saskatchewan	7.5
46. Northern Saskatchewan	20.1

See notes at the end of the table.

Table 8 – continued

Regional unemployment rates used by the Employment Insurance program, ¹ seasonally adjusted, 3-month moving average

Region	Effective from April 10, 2016 to May 7, 2016
	percent
Alberta	
47. Calgary, Alberta	8.6
48. Edmonton, Alberta	6.9
49. Northern Alberta	12.3
50. Southern Alberta	8.1
British Columbia	
51. Southern Interior British Columbia	8.8
52. Abbotsford, British Columbia	7.0
53. Vancouver, British Columbia	6.3
54. Victoria, British Columbia	6.9
55. Southern Coastal British Columbia	7.9
56. Northern British Columbia	11.1
Territories ^{3, 5}	
57. Whitehorse, Yukon ⁶	5.9
58. Yukon	10.4
59. Yellowknife, Northwest Territories	6.1
60. Northwest Territories ⁷	12.7
61. Iqaluit, Nunavut	4.7
62. Nunavut ⁸	22.1

1. The boundaries of these regions are determined by Employment and Social Development Canada (ESDC). For geographic descriptions and maps of employment insurance regions, see the ESDC website: <http://srv129.services.gc.ca/eiregions/en/geocont.aspx>.

2. This region excludes St. John's.

3. Prince Edward Island as well as the territories are each comprised of two regions effective October 12, 2014.

4. This region excludes Charlottetown.

5. The monthly regional unemployment rates for EI purposes in the territories are subject to the greater of a seasonally adjusted 3-month-moving average or 12-month-moving average.

6. This region excludes Whitehorse.

7. This region excludes Yellowknife.

8. This region excludes Iqaluit.

Note(s): Related CANSIM table 282-0168. All regions are based on the 1996 Census boundaries, with the exception of those in Prince Edward Island and in the territories, which respect the 2011 Census boundaries.

Data quality

Definitions and explanations

The **labour force** is composed of those members of the civilian non-institutional population 15 years of age and over who, during the reference week, were employed or unemployed.

Employed persons are those who, during the reference week:

- (a) did any work at all at a job or business;
- (b) had a job but were not at work.

A person is considered to be **full-time** if his/her usual hours at the main job are 30 or more hours per week. When the number of hours worked at the main job is usually less than 30 hours per week then he/she is considered to be **part-time**.

Unemployed persons are those who, during the reference week:

- (a) were without work, had actively looked for work in the past four weeks (ending with reference week) and were available for work;
- (b) had not actively looked for work in the past four weeks but were on temporary layoff and were available for work;
- (c) had not actively looked for work but had a new job to start within four weeks from the reference week and were available for work.

Persons in the civilian non-institutional population 15 years of age and over who, during the reference week, were neither employed nor unemployed are classified as **not in the labour force**.

The **unemployment rate** represents the number of unemployed persons expressed as a percentage of the labour force (employed and unemployed). The unemployment rate for a particular group (for example, age, sex, or marital status) is the number unemployed in that group expressed as a percentage of the labour force for that group.

The **participation rate** represents the total labour force expressed as a percentage of the population aged 15 years and over. The participation rate for a particular group (for example, women aged 25 years and over) is the labour force in that group expressed as a percentage of the population for that group.

The **employment rate** represents the number of employed persons expressed as a percentage of the population aged 15 years and over. The employment rate for a particular group (for example, age, sex, marital status, or province) is the number employed in that group expressed as a percentage of the population for that group.

The **part-time rate** represents the number of persons employed part-time expressed as a percentage of the employed. The part-time rate for a particular group (for example, age or sex) is the number of persons employed part-time in that group expressed as a percentage of the employed for that group.

All geographic regions are based on the 2011 Census boundaries.

Seasonal adjustment

Fluctuations in economic time series are caused by seasonal, cyclical and irregular movements. A seasonally adjusted series is one from which seasonal movements have been eliminated. Seasonal movements are defined as those which are caused by regular annual events such as climate, holidays, vacation periods and cycles related to crops, production and retail sales associated with Christmas and Easter. The seasonally adjusted series contains irregular as well as longer-term cyclical fluctuations.

The seasonally adjusted series are revised each year to take into account current data and to generate new forecast factors for the next twelve months. The data are therefore subject to slight revisions in future issues of this publication.

For more information on seasonal adjustment, see *Seasonally adjusted data – Frequently asked questions*.

Sampling variability of estimates

Estimates in this publication are based on the Labour Force Survey, a monthly survey of approximately 56,000 households across Canada. Because the entire population is not surveyed, the estimates are subject to sampling error. While the published estimate is the best available indicator of the real value, changes in the level of any estimates between two months can be the result of a true change, or sampling variability. The sampling error can be estimated by calculating the standard error for the published estimate or statistic. These standard errors have been included in the publication tables in order to assist users in interpreting the data. They are based on 12-month averages and are updated twice a year, in February and August.

Interpretation based on standard error

Approximately two-thirds (68%) of the time, a change greater than the sampling error indicates a real change. The larger the change compared to the standard error, the better the chance that we are observing a real change, as opposed to a change due to sampling variability. At the 95% confidence level, the change in the estimate must be greater than twice the standard error in order to ensure that change is real.

Movements in estimates that are smaller than the standard error are less likely to reflect a real change and more likely to be due to sampling variability. While the above is true for monthly movements, one can have more confidence in a series of consecutive movements in the same direction, even though some of the monthly movements may be smaller than the standard error.

Interpretation based on confidence intervals

Confidence intervals provide another way of looking at the variability inherent in estimates of sample surveys. To illustrate how to calculate the confidence interval, let us say that one month the published estimate for total employment rose by 16,000 to reach 18,000,000. The associated standard error for the movement estimate is 29,500. The standard error used to interpret the movement estimate indicates that:

- There are approximately two chances in three (68%) that the real value of the movement between the two months falls within the range -13,500 to +45,500 (16,000 + or – one standard error).
- There are approximately nine chances in ten (90%) that the real value of the movement between the two months falls within the range -31,200 to +63,200 (16,000 + or – 1.6 times the standard error).
- There are approximately nineteen chances in twenty (95%) that the real value of the movement between the two months falls within the range -43,000 to +75,000 (16,000 + or – two standard errors).

For more detailed explanations on the sampling variability of estimates, and in particular for information on how to assess the variability of level estimates, consult the **Data quality** section of the *Guide to the Labour Force Survey (71-543-G)*.

Documentation

For more detailed information about the Labour Force Survey, see the following documents:

- Overview of the Labour Force Survey (LFS) 3701
- *Guide to the Labour Force Survey (71-543-G)*
- *Methodology of the Canadian Labour Force Survey (71-526-X)*
- *LFS geographical maps*