

ca
CATALOGUE No.

73-001

MONTHLY



DOES NOT CIRCULATE
NE PAS PRÊTER

STATISTICAL REPORT ON THE OPERATION OF
THE UNEMPLOYMENT INSURANCE ACT

MAY 1961

(Compiled from material supplied by the Unemployment Insurance Commission)

Published by Authority of
The Honourable George Hees, Minister of Trade and Commerce

DOMINION BUREAU OF STATISTICS

Labour Division

Unemployment Insurance Section

8004-509-51

Price \$2.00 per annum

20
Vol. 19—No. 5

TABLE OF CONTENTS

	Page
Chart, Unemployment Insurance Activities	3
Commentary	4

List of Tables

Consolidated data on claims for regular, seasonal and fishing benefit:

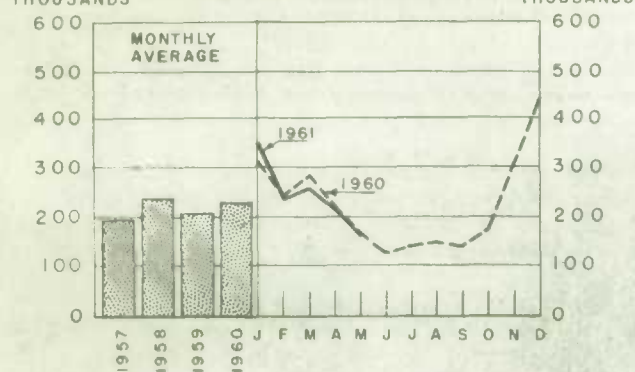
Summary Table	6
Table 1. - Estimates of the Insured Population under the Unemployment Insurance Act	7
Table 2. - Number of Initial and Renewal Claims Filed in Local Offices in each Province	7
Table 3. - Claimants Currently Reporting to Local Offices by Number of Weeks on Claim, Province and Sex, and Percentage Postal	8
Table 4. - Disposition of Initial and Renewal Claims and Claims Pending at the End of the Month, by Province	9
Table 5. - Number of Claimants Not Entitled to Benefit in each Province, with Chief Reasons for Non-Entitlement	10
Table 6. - Estimates of the Number of Beneficiaries, by Province	11
Table 7. - Benefit Payments, Showing Number of Weeks and Amount Paid, by Province	11
Table 8. - Number of Weeks Compensated, Classified as to Complete and Partial Weeks, and Showing Separately the Number of Partial Weeks Due to Excess Earnings, by Province	12
Seasonal Benefit, 1960-61 and 1959-60 periods	13
Appendix - Glossary of terms	20

Annual data for the calendar years 1959 and 1960 are included in the January 1961 issue in this series.

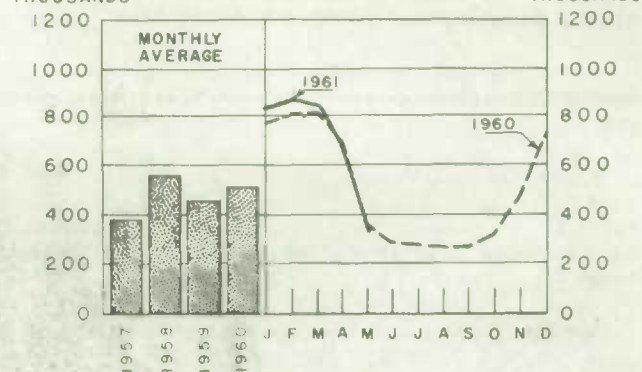
For information regarding the personal characteristics, occupational and industrial status of both the insured population and persons establishing claims, see the "Annual Report on Benefit Periods Established and Terminated under the Unemployment Insurance Act", D.B.S. Labour Division, Unemployment Insurance Section.

UNEMPLOYMENT INSURANCE ACTIVITIES

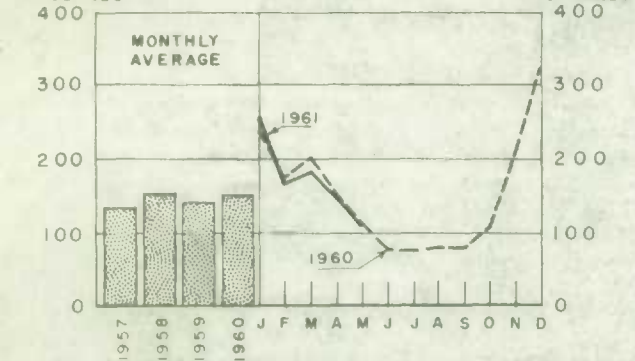
INITIAL AND RENEWAL CLAIMS



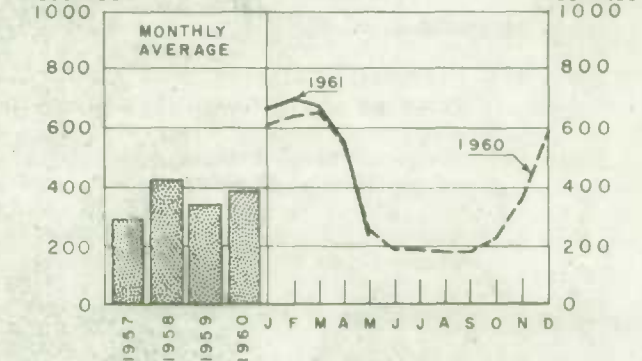
CLAIMANTS (MONTH END)



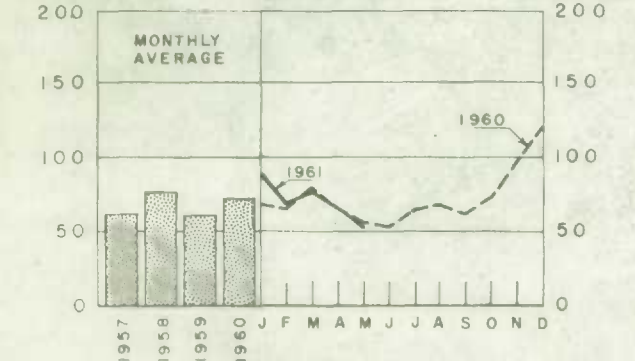
INITIAL



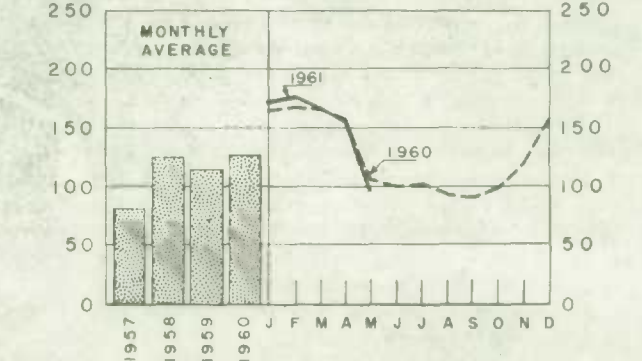
MALE



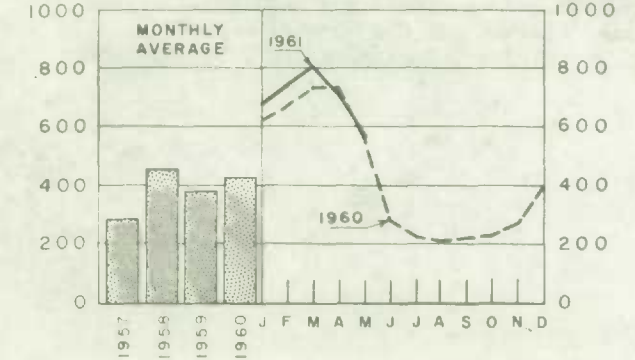
RENEWAL



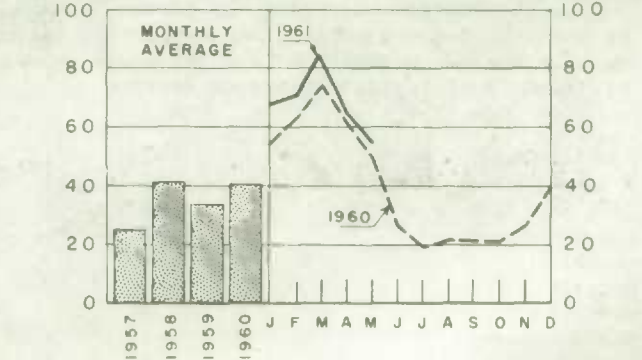
FEMALE



BENEFICIARIES



BENEFIT PAYMENTS



CLAIMS AND BENEFIT PAYMENTS

May 1961

Claimants at month-end:
volume and type

The interval during which seasonal benefit was operative terminated on May 20 (May 21 one year ago). The claimant count for the end of May therefore represents claimants for regular benefit only, whereas April figures include seasonal benefit.

Claimants for regular benefit totalled 341,000 on May 31, in comparison with 364,300 on May 31, 1960. On April 28, the claimant count was 713,100, comprising 466,400 identified as regular and 246,800 as seasonal benefit. Regular claimants thus declined by 125,400 during the month, and were 23,300 fewer than at the same date last year. Males accounted for almost 95 per cent of the April-to-May decline in regular claimants.

Postal claimants accounted for 32 per cent of the total on May 31, virtually unchanged from last year. On April 28, 35 per cent of regular claimants were postal.

Initial and renewal claims:
receipt and disposal

The volume of initial and renewal claims, at 162,100 during May, was almost 25 per cent below the April total of 209,600. During May 1960 the total was 165,600. It is estimated that between 45,000 and 50,000 or close to 50 per cent of the initial claims filed during the month were from persons terminating their benefit rights and seeking to re-establish a subsequent benefit period. More than 90 per cent of the seasonal benefit claims processed during May were in this category. Such claims do not represent new separations from employment.

Beneficiaries and Benefit payments

The average weekly estimate of beneficiaries was 563,500 in May, in comparison with 708,200 in April and 560,800 in May 1960. Benefit payments amounted to \$58.7 million for May, as against \$64.5 million for April and \$52.2 million for May 1960. The average benefit payment per week compensated was \$23.68 for May, \$23.98 for April and \$22.17 for May 1960.

Claims and Benefit Payments, by province

Variations in the relative importance of seasonal benefit have their impact on the April to May changes in the month-end claimant count by province. For this reason, month-to-month percentage changes are not shown. Year-over-year percentage changes were less than 10 per cent in all provinces except Prince Edward Island (+ 12 per cent), Nova Scotia and Quebec, where declines of 16 and 12 per cent respectively were shown.

Percentage change in month-end claimant count (regular only)

May 1960 to May 1961

	<u>Total</u>	<u>Male</u>	<u>Female</u>
Canada	- 6	- 6	- 7
Newfoundland	+ 7	+ 9	- 2
Prince Edward Island	+ 12	+ 14	+ 6
Nova Scotia	- 16	- 20	+ 7
New Brunswick	+ 5	+ 7	- 5
Quebec	- 12	- 12	- 12
Ontario	- 6	- 4	- 10
Manitoba	+ 4	+ 9	- 6
Saskatchewan	- 1	- 3	+ 5
Alberta	- 1	- 4	+ 7
British Columbia	- 2	- 2	- 1

The April-to-May decline in claims was shared by all provinces, the percentage decline being in excess of the national rate (23 per cent) everywhere except Quebec (20 per cent), Ontario (15 per cent) and British Columbia (11 per cent). In general, the percentage decline was greater for initial than renewal claims and this is associated with the termination of the seasonal benefit period on May 20.* Year-over-year comparison of the claim intake by province indicates a higher level this year in all provinces except Nova Scotia, Quebec, Ontario and British Columbia.

Percentage change in claims filed

	<u>April to May 1961</u>			<u>May 1960 to May 1961</u>			<u>April to May 1960</u>		
	<u>Total</u>	<u>Initial</u>	<u>Renewal</u>	<u>Total</u>	<u>Initial</u>	<u>Renewal</u>	<u>Total</u>	<u>Initial</u>	<u>Renewal</u>
Canada	- 23	- 24	- 19	- 2	- 1	- 4	- 23	- 26	- 14
Nfld.	- 35	- 32	- 52	+ 11	+ 13	- 2	- 38	- 36	- 49
P.E.I.	- 53	- 54	- 45	+ 25	+ 29	+ 9	- 55	- 57	- 45
N.S.	- 51	- 42	- 65	- 19	+ 22	- 56	- 40	- 55	- 11
N.B.	- 46	- 40	- 61	+ 4	+ 8	- 9	- 44	- 42	- 50
Que.	- 20	- 22	- 15	-	- 1	+ 4	- 25	- 27	- 19
Ont.	- 15	- 19	- 7	- 6	- 8	- 4	- 9	- 13	-
Man.	- 25	- 25	- 24	+ 12	+ 12	+ 9	- 35	- 35	- 34
Sask.	- 41	- 43	- 34	+ 2	+ 6	- 9	- 44	- 48	- 28
Alta.	- 30	- 33	- 20	+ 10	+ 8	+ 13	- 35	- 39	- 24
B.C.	- 11	- 14	- 5	- 1	- 2	- 1	- 17	- 17	- 18

* During the interval when seasonal benefit is operative, persons on claim when their regular benefit rights terminate are eligible for an extension under the seasonal benefit provisions. However, regulations require that the basic claim document be completed and an initial claim is recorded. In the main, this practice would discontinue after May 13.

.. Figures not available.

... Figures not applicable.

- Nil.

Summary table

Activity	May 1961	Apr. 1961	May 1960	% Change from		Cumulative data			
				Apr. 1961	May 1960	January to May		12 months ending May	
						1961	1960	1961	1960
	(Thousands)					(Thousands)		(Thousands)	
Insured population as at month-end	..	4,147	4,110	4,249*	..	4,138*
Initial and renewal claims filed	162	210	166	- 23	- 2	1,210	1,211	2,700	2,529
Claimants currently reporting to local offices									
Regular only	341	466	364	- 27	- 6				
SB only	...	247				
Regular and SB	...	713	722*	700*	528*	476*
Beneficiaries (weekly average)	564	708	561	- 20	+ 1	698*	665*	444*	394*
Weeks compensated	2,479	2,691	2,355	- 8	+ 5	14,496	13,837	22,260	19,757
Benefit paid \$	58,704	64,540	52,206	- 9	+ 12	347,081	305,749	523,169	428,838
Average weekly benefit \$	23.68	23.98	22.17	- 1	+ 7	23.94	22.10	23.50	21.71

* Monthly average.

Table 1. - Estimates of the Insured Population under the Unemployment Insurance Act.
(Revised) (1)

End of:	Total	Employed	Claimants
1961 - April	4,147,000	3,433,900	713,100
March	4,210,000	3,372,000	838,000
February	4,247,000	3,374,200	872,800
January	4,240,000	3,393,100	846,900
1960 - December	4,251,000	3,496,900	754,100
November	4,110,000	3,624,800	485,200
October	4,002,000	3,671,800	330,200
September	3,998,000	3,718,500	279,500
August	4,003,000	3,722,800	280,200
July	3,985,000	3,690,900	294,100
June	4,014,000	3,717,600	296,400
May	4,109,580	3,591,520	518,060(2)
April	4,222,000	3,507,100	714,900

Table 2. - Number of Initial and Renewal Claims Filed in Local Offices in each Province. (3)

Prov.	1961 - May - 1960					
	Total	Initial	Renewal	Total	Initial	Renewal
Canada -	162,059	109,152	52,907	165,635	110,237	55,398
Nfld.	4,008	3,549	459	3,610	3,144	466
P.E.I.	584	475	109	467	367	100
N.S.	6,778	4,859	1,919	8,356	3,981	4,375
N.B.	6,177	4,932	1,245	5,919	4,552	1,367
Que.	50,434	34,699	15,735	50,378	35,200	15,178
Ont.	57,779	36,329	21,450	61,769	39,523	22,246
Man.	6,023	4,427	1,596	5,400	3,939	1,461
Sask.	3,287	2,553	734	3,211	2,403	808
Alta.	8,519	5,716	2,803	7,779	5,309	2,470
B.C.	18,470	11,613	6,857	18,746	11,819	6,927

(1) Revised on the basis of June 1, 1960 book renewal.

(2) The number of persons reporting to local offices as claimants during the first two weeks of book renewal. For other months, the claimants are as shown in Table 3.

(3) In addition, revised claims received numbered 42,454.

Table 3. - Claimants Currently Reporting to Local Offices by Number of Weeks on Claim, Province and Sex, and Percentage Postal.

(Counted on last working day of the month)

Prov. and Sex	Total claimants	Number of weeks on claim							Percent- age Postal	May 31, 1960 Total claimants
		2 or Less	3-4	5-8	9-12	13-16	17-20	Over 20		
	May 31, 1961									
CANADA -	340,950	69,437	30,615	52,437	42,753	36,807	32,002	76,899	32.2	364,323
MALE	242,648	49,325	21,528	38,513	32,113	26,943	22,305	51,921	36.1	258,117
FEMALE	98,302	20,112	9,087	13,924	10,640	9,864	9,697	24,978	22.5	106,206
Nfld.	9,982	871	642	1,341	1,476	1,640	1,280	2,732	71.1	9,295
Male	8,936	755	564	1,242	1,381	1,498	1,137	2,359	73.2	8,229
Female	1,046	116	78	99	95	142	143	373	53.2	1,066
P.E.I.	1,171	161	111	172	128	133	127	339	65.2	1,046
Male	838	114	87	132	91	104	89	221	70.9	732
Female	333	47	24	40	37	29	38	118	51.1	314
N.S.	15,683	2,319	1,074	2,529	1,826	1,545	1,873	4,517	46.3	18,626
Male	12,583	1,818	814	2,108	1,496	1,223	1,492	3,632	48.6	15,733
Female	3,100	501	260	421	330	322	381	885	36.6	2,893
N.B.	14,859	1,791	1,059	3,107	1,983	1,626	1,487	3,806	60.3	14,167
Male	12,074	1,395	881	2,753	1,666	1,370	1,176	2,833	63.0	11,237
Female	2,785	396	178	354	317	256	311	973	48.7	2,930
Que.	106,536	22,347	9,464	15,439	13,673	12,606	9,818	23,189	33.9	120,681
Male	77,061	15,460	6,499	11,009	10,843	10,141	7,354	15,755	38.1	87,285
Female	29,475	6,887	2,965	4,430	2,830	2,465	2,464	7,434	23.1	33,396
Ont.	114,757	26,562	10,971	17,536	13,535	11,180	10,155	24,818	21.7	122,049
Male	76,768	18,473	7,429	12,103	9,285	7,213	6,479	15,786	23.4	79,996
Female	37,989	8,089	3,542	5,433	4,250	3,967	3,676	9,032	18.1	42,053
Man.	13,692	1,884	1,291	2,320	2,116	1,853	1,419	2,809	26.2	13,180
Male	9,374	1,277	914	1,623	1,414	1,268	987	1,891	30.5	8,566
Female	4,318	607	377	697	702	585	432	918	17.1	4,614
Sask.	7,629	1,255	575	1,177	903	847	896	1,976	46.0	7,674
Male	5,046	824	360	846	613	562	561	1,280	51.7	5,206
Female	2,583	431	215	331	290	285	335	696	35.0	2,468
Alta.	18,753	3,925	1,778	2,909	2,532	2,141	1,821	3,647	36.5	18,945
Male	13,451	2,934	1,349	2,216	1,873	1,517	1,230	2,332	42.0	13,969
Female	5,302	991	429	693	659	624	591	1,315	22.7	4,976
B.C.	37,888	8,322	3,650	5,907	4,581	3,236	3,126	9,066	28.3	38,660
Male	26,517	6,275	2,631	4,481	3,451	2,047	1,800	5,832	31.4	27,164
Female	11,371	2,047	1,019	1,426	1,130	1,189	1,326	3,234	21.3	11,496

Table 4. - Disposition of Initial and Renewal Claims and Claims Pending at the End of the Month.*

Prov.	A d j u d i c a t e d					P e n d i n g	
	Total	Entitled to Benefit		Not Entitled to Benefit		Initial	Renewal
		Initial	Renewal	Initial	Renewal		

May - 1961

Canada -	172,745	90,307	50,316	27,238	4,884	24,236	9,973
Nfld.	4,992	3,430	486	946	130	770	89
P.E.I.	714	513	111	81	9	65	21
N.S.	8,256	5,354	1,795	958	149	938	320
N.B.	7,161	4,646	1,215	1,062	238	885	245
Que.	53,771	30,075	15,374	7,139	1,183	8,886	3,202
Ont.	59,147	27,218	19,782	10,184	1,963	8,437	4,051
Man.	6,504	3,664	1,534	1,123	183	482	325
Sask.	3,857	2,388	738	625	106	423	140
Alta.	9,134	4,334	2,803	1,746	251	1,001	499
B.C.	19,209	8,685	6,478	3,374	672	2,349	1,081

May - 1960

Canada -	180,704	99,122	53,585	23,979	4,018	29,416	9,784
Nfld.	4,919	3,669	590	612	48	720	93
P.E.I.	557	414	83	48	12	47	24
N.S.	11,205	5,947	4,319	801	138	932	285
N.B.	7,416	5,059	1,429	829	99	1,067	300
Que.	54,424	31,962	14,864	6,478	1,120	10,171	2,836
Ont.	62,689	31,710	20,848	8,630	1,501	11,316	3,824
Man.	6,230	3,565	1,487	1,001	177	611	267
Sask.	4,191	2,645	868	605	73	398	167
Alta.	9,809	5,181	2,754	1,623	251	1,192	655
B.C.	19,264	8,970	6,343	3,352	599	2,962	1,333

* In addition 43,804 revised claims were disposed of. Of these, 4,901 were special requests not granted and 1,595 were appeals by claimants. There were 9,443 revised claims pending at the end of the month.

Table 5. - Number of Claimants Not Entitled to Benefit in each Province during May 1961 and 1960 with Chief Reasons for Non-entitlement.

Chief Reasons for Non-entitlement	Year	Canada	Nfld.	P.E.I.	N.S.	N.B.	Que.	Ont.	Man.	Sask.	Alta.	B.C.
Benefit period not established	1961	16,428	479	35	510	641	4,075	6,370	683	281	1,128	2,226
	1960	13,695	436	18	445	518	3,731	4,799	597	280	925	1,946
Claimants disqualified	1961	31,305	869	135	1,105	1,135	10,291	11,049	1,164	795	1,604	3,158
	1960	28,790	540	91	1,017	1,007	9,466	10,074	1,126	709	1,679	3,081
Not unemployed	1961	747	30	7	34	31	227	244	24	37	52	61
	1960	725	19	2	18	25	185	319	28	42	33	54
Not capable of and not available for work	1961	9,520	122	32	308	226	2,989	3,737	388	248	444	1,026
	1960	8,895	120	20	249	268	2,785	3,543	342	238	529	801
Loss of work due to a labour dispute	1961	357	-	-	17	177	61	70	-	32	-	-
	1960	408	-	-	7	-	152	29	2	-	-	218
Refused offer of work and neglected opportunity to work	1961	2,380	12	29	109	79	830	848	95	82	116	180
	1960	2,352	9	4	139	169	747	772	177	103	121	111
Discharged for misconduct	1961	1,285	26	3	52	23	467	472	48	20	62	112
	1960	1,099	5	3	34	23	405	466	24	15	42	82
Voluntarily left employment without just cause	1961	6,967	131	21	217	204	2,031	2,337	396	231	571	828
	1960	7,513	141	21	230	187	2,079	2,689	365	218	582	1,001
Other reasons	1961	10,049	548	43	368	395	3,686	3,341	213	145	359	951
	1960	7,798	246	41	340	335	3,113	2,256	188	93	372	814

* Previously failed on initial claim but subsequently established on revised claim during May 1961 4,447 118 16 99 133 1,698 1,551 111 47 184 490

Table 6. - Estimates of the Number of Beneficiaries, by Province.

Province	Average per week	
	1961 - May - 1960	
	(in thousands)	
Canada -	563.5	560.8
Newfoundland	26.9	22.7
Prince Edward Island	4.1	3.2
Nova Scotia	29.9	25.7
New Brunswick	34.1	28.7
Quebec	177.5	194.9
Ontario	169.8	168.8
Manitoba	25.1	22.5
Saskatchewan	15.3	15.9
Alberta	28.2	27.2
British Columbia	52.5	51.2

Table 7. - Benefit Payments, by Province.

Prov.	1961 - May - 1960			
	Weeks	Amount (in dollars)	Weeks	Amount (in dollars)
Canada -	2,479,275	58,704,099	2,355,280	52,205,580
Nfld.	118,341	3,050,684	95,321	2,169,954
P.E.I.	18,246	398,265	13,578	275,645
N.S.	131,580	2,944,140	107,857	2,198,857
N.B.	149,984	3,442,333	120,772	2,585,391
Que.	781,070	18,322,431	818,477	18,315,464
Ont.	747,099	17,625,363	709,135	15,608,139
Man.	110,483	2,573,238	94,314	2,043,395
Sask.	67,495	1,594,477	66,722	1,440,135
Alta.	123,953	3,094,541	114,074	2,657,960
B.C.	231,024	5,658,627	215,030	4,910,640

Table 8. - Number of Weeks of Benefit, by Province.

Province	Complete Weeks	Partial Weeks	
		Total	Due to Excess Earnings

May - 1961

Canada -	2,303,535	175,740	132,361
Newfoundland	111,451	6,890	5,174
Prince Edward Island	17,149	1,097	750
Nova Scotia	117,415	14,165	11,898
New Brunswick	139,559	10,425	7,348
Quebec	732,706	48,364	34,798
Ontario	693,774	53,325	40,506
Manitoba	102,627	7,856	6,077
Saskatchewan	62,804	4,691	3,717
Alberta	114,679	9,274	6,872
British Columbia	211,371	19,653	15,221

May - 1960

Canada -	2,211,955	143,325	103,473
Newfoundland	89,399	5,922	4,397
Prince Edward Island	12,703	875	662
Nova Scotia	96,203	11,654	9,521
New Brunswick	111,618	9,154	6,767
Quebec	775,548	42,929	29,514
Ontario	666,881	42,254	30,790
Manitoba	87,879	6,435	4,993
Saskatchewan	62,644	4,078	3,157
Alberta	108,658	5,416	3,150
British Columbia	200,422	14,608	10,522

Seasonal Benefit

Tables I - VII SB, pages 14 to 19, contain information relating to the operation of the seasonal benefit provisions during the 1960-61 and 1959-60 periods. More than 600,000 initial claims were considered under these provisions in 1960-61, in comparison with 580,000 in the 1959-60 period. The total volume of initial claims (including regular) handled during December 1960 to May 1961 was however slightly lower than for the same interval last year. This is reflected in Table II which provides the proportion of initial claims considered for seasonal benefit. Marked differences occur in the relative significance of these claims by province and month. More than two-thirds of the initial claims processed in Newfoundland and Prince Edward Island over this interval were considered for seasonal benefit. For New Brunswick the proportion was 60 per cent, Nova Scotia 51 per cent and British Columbia 50 per cent. The sharp upward turn for March and April represents, largely, a change in classification as claimants terminating regular are considered for seasonal benefit.

From Table III it will be seen that while the March and the April volume of claims established is almost as large as January, this is true only for non-fishing seasonal claims. Claims representing a change in classification from regular to seasonal are primarily from persons whose contributory employment is other than fishing. The majority of persons eligible for seasonal benefit by virtue of employment in fishing establish the right to benefit during the opening weeks of the season. Three-quarters of these claims arise in the Atlantic provinces (Table IV).

The month-end count of seasonal benefit claimants reaches its peak in March but for those classed as fishing claimants it is February (Table V). Comparison of the claimant count, the end of December with the end of April, indicates that non-fishing claimants more than doubled whereas fishing claimants declined by a third. Provincial variations in the relationship between the end of April and the end of December claimant totals can be seen from Table VI.

On the average, more than a quarter of the persons on claim at the end of each month, December 30, 1960 to April 28, 1961, were identified as seasonal benefit. For Prince Edward Island the proportion was 53 per cent. Newfoundland ranked next, 48 per cent, while for New Brunswick it was 40 per cent. Elsewhere the proportion was between 20 and 30 per cent.

Current statistics are not maintained separately for payments under the seasonal benefit terms but will be available in the Annual Report on Benefit Periods Established and Terminated under the Unemployment Insurance Act.*

* Prepared in the Labour Division, Unemployment Insurance Section, D.B.S.

Seasonal Benefit, December to May, 1960-61 and 1959-60

14

Table 1 - (S.B.) Initial Claims Considered* under the Seasonal Benefit Provisions 1960-61 and 1959-60 Periods, by Province.

Seasonal Benefit Period and Month	Canada	Nfld.	P.E.I.	N.S.	N.B.	Que.	Ont.	Man.	Sask.	Alta.	B.C.
	in thousands										
<u>1960-61 Period</u>	602.8	34.7	6.9	32.2	38.1	193.2	160.4	24.5	18.7	28.1	66.0
December	188.6	15.7	3.2	10.1	12.0	52.0	49.2	6.6	5.5	7.7	26.7
January	116.0	5.9	1.3	8.5	7.8	38.2	30.4	4.3	3.3	5.0	11.2
February	76.9	3.0	0.5	3.6	4.4	27.0	21.4	3.4	2.2	3.9	7.6
March	85.4	3.3	0.7	3.2	5.0	29.6	23.2	4.4	3.2	4.4	8.3
April	85.7	3.7	0.8	4.4	5.7	27.9	24.1	3.7	3.0	5.0	7.5
May	50.1	3.0	0.4	2.4	3.2	18.4	12.1	2.1	1.6	2.1	4.8
<u>1959-60 Period</u>	580.4	33.6	6.9	33.1	37.0	189.5	157.0	22.4	18.3	25.9	56.8
December	164.7	12.3	3.3	10.3	11.7	46.8	44.1	5.3	4.8	6.1	20.0
January	113.1	8.4	1.3	9.1	6.8	34.7	29.8	4.3	3.3	4.7	10.7
February	75.9	3.1	0.5	3.6	5.0	26.6	20.9	3.3	2.3	3.6	6.9
March	90.2	3.2	0.8	3.9	5.9	32.5	24.8	4.2	3.2	4.4	7.4
April	82.2	3.7	0.8	4.0	4.6	29.7	22.0	3.3	2.9	4.5	6.6
May	54.4	2.9	0.3	2.3	3.0	19.3	15.3	2.0	1.7	2.5	5.1

* Includes cases processed during November but excludes residual cases processed after May 31.

TABLE II - (S.B.) Initial Claims Considered under the Seasonal Benefit Provisions as a Percentage of Initial Claims Processed, 1960-61 and 1959-60 Periods.

Seasonal Benefit Period and Month	Canada	Nfld.	P.E.I.	N.S.	N.B.	Que.	Ont.	Man.	Sask.	Alta.	B.C.
	per cent										
<u>1960-61 Period</u>	47.6	67.3	68.7	51.0	59.9	48.6	41.4	44.5	47.4	42.3	50.2
December	55.8	78.0	74.1	62.8	65.4	53.2	50.2	47.1	49.3	48.7	62.8
January	40.2	56.4	57.9	52.0	55.3	41.0	33.9	36.1	35.3	37.0	40.0
February	42.5	52.6	57.4	43.4	55.4	45.2	37.7	38.3	40.2	37.6	44.8
March	48.5	61.4	71.4	47.7	60.6	50.5	42.1	50.9	55.2	45.2	49.5
April	52.1	69.2	74.2	46.8	61.4	54.7	47.7	53.2	60.8	46.1	48.6
May	42.7	67.8	72.6	38.4	56.4	49.6	32.2	44.8	54.3	34.4	39.6
<u>1959-60 Period</u>	45.9	66.1	70.3	52.1	59.4	46.3	40.3	43.4	46.7	38.4	46.8
December	52.8	78.1	77.9	66.7	67.2	48.9	47.6	45.7	47.1	43.4	57.6
January	38.4	57.7	51.8	50.5	51.5	36.8	33.1	33.8	35.1	31.8	39.0
February	41.4	50.5	55.8	45.7	56.8	43.5	36.7	39.5	39.6	34.4	41.0
March	46.3	61.6	70.4	48.3	61.7	48.1	39.8	48.9	52.7	39.7	47.7
April	49.9	67.4	78.8	51.1	59.0	53.0	44.8	51.2	60.6	42.9	42.5
May	44.2	66.7	68.8	33.8	51.6	50.1	38.0	43.5	53.4	36.7	41.3

Table III - (S.B.) Number of Claims Established⁽¹⁾ under the Seasonal Benefit Provisions, by Month, 1960-61 and 1959-60 Periods.

Seasonal Benefit Period	Total for the period	Dec.(2)	Jan.	Feb.	Mar.	Apr.	May(2)
in thousands							
<u>1960-61 Period</u>							
Total	468.5	136.2	84.7	60.7	73.3	72.0	41.7
Non-fishing	438.3	116.8	76.9	59.1	72.3	71.7	41.7
Fishing	30.2	19.4	7.8	1.6	1.0	0.3	-
<u>1959-60 Period</u>							
Total	442.4	118.0	79.8	57.9	76.0	67.0	43.7
Non-fishing	412.6	100.6	70.4	56.1	75.1	66.7	43.7
Fishing	29.8	17.4	9.4	1.8	0.9	0.3	-

(1) The contribution requirement of 15 weeks since the preceding March 31 was proven or a regular benefit period had terminated since the Saturday following the week in which May 15 occurred.

(2) Includes cases processed during November but excludes residual cases processed after May 31.

Table IV - (S.B.) Number of Claims Established under the Seasonal Benefit Provisions, by Province, 1960-61 and 1959-60 Periods.

Seasonal Benefit Period	Canada	Nfld.	P.E.I.	N.S.	N.B.	Que.	Ont.	Man.	Sask.	Alta.	B.C.
in thousands											
<u>1960-61 Period</u>											
Total	468.5	28.9	6.2	26.9	31.2	150.0	123.4	19.2	14.9	20.9	47.0
Non-fishing	438.3	18.5	4.2	20.7	27.1	148.7	122.7	18.6	14.8	20.8	42.1
Fishing	30.2	10.4	2.0	6.1	4.1	1.3	0.7	0.6	-	-	4.9
<u>1959-60 Period</u>											
Total	442.4	27.9	6.2	26.5	29.5	146.9	115.6	17.3	14.2	18.4	40.1
Non-fishing	412.6	17.6	4.3	20.5	25.2	145.4	114.9	16.6	14.2	18.4	35.6
Fishing	29.8	10.3	1.9	6.0	4.3	1.5	0.7	0.7	-	-	4.5

Table V - (S.B.) Seasonal Benefit Claimants Reporting to Local Offices on the Last Working Day of the Month, 1960-61, and 1959-60 periods.

Seasonal Benefit Period	Average for the period	December	January	February	March	April
in thousands						
<u>1960-61 Period</u>						
Total Claimants	220.2	134.1	205.0	249.6	265.8	246.8
Male	176.0	106.1	163.2	199.8	213.9	196.9
Female	44.3	28.0	41.8	49.7	51.9	49.9
Non-fishing	197.4	114.1	177.2	220.2	241.8	233.5
Male	153.2	86.2	135.5	170.6	190.0	183.7
Female	44.2	27.9	41.7	49.6	51.8	49.8
Fishing	22.9	20.0	27.9	29.4	23.9	13.2
Male	22.8	19.9	27.8	29.2	23.9	13.2
Female	0.1	0.1	0.1	0.1	0.1	-
<u>1959-60 Period</u>						
Total Claimants	197.6	116.5	177.1	217.1	248.5	228.6
Male	157.1	91.8	139.9	171.6	199.9	182.3
Female	40.5	24.7	37.2	45.5	48.6	46.3
Non-fishing	175.6	98.7	151.1	187.9	224.6	215.5
Male	135.2	74.1	114.0	142.5	176.1	169.3
Female	40.4	24.6	37.1	45.4	48.5	46.3
Fishing	22.0	17.8	26.0	29.2	23.9	13.1
Male	21.9	17.7	25.9	29.1	23.8	13.0
Female	0.1	0.1	0.1	0.1	0.1	-

Table VI - (S.B.) Seasonal Benefit Claimants Reporting to Local Offices on the Last Working Day of the Month, by Province, 1960-61 and 1959-60 Periods.

Seasonal Benefit Period	Canada	Nfld.	P.E.I.	N.S.	N.B.	Que.	Ont.	Man.	Sask.	Alta.	B.C.
	in thousands										
<u>1960-61 Period</u>											
Average for the Period	220.2	17.2	3.6	14.1	16.1	69.8	54.9	8.1	6.3	8.1	22.1
December	134.1	13.4	2.8	8.1	9.4	40.1	32.5	4.2	3.6	4.2	15.7
January	205.0	17.9	4.0	14.7	15.4	62.5	50.4	6.5	5.5	6.9	21.2
February	249.6	20.3	4.4	16.6	18.8	77.2	61.7	9.0	6.8	9.0	25.7
March	265.8	19.0	4.1	16.6	19.3	86.6	65.6	10.3	8.4	10.4	25.7
April	246.8	15.2	2.9	14.6	17.6	82.7	64.2	10.4	7.3	9.8	22.0
<u>1959-60 Period</u>											
Average for the Period	197.6	15.9	3.5	14.1	15.2	62.6	48.3	7.2	5.9	7.1	17.9
December	116.5	10.4	3.0	8.2	9.4	34.1	28.0	4.0	3.2	3.8	12.5
January	177.1	16.8	3.1	14.4	13.9	52.5	42.6	5.4	5.1	6.0	17.5
February	217.1	19.5	4.5	16.6	17.6	64.1	52.6	7.4	6.6	7.4	20.9
March	248.5	18.2	4.1	17.2	18.7	81.5	60.8	10.0	7.8	9.4	20.9
April	228.6	14.4	2.9	13.9	16.4	80.7	57.4	9.2	7.0	8.9	17.7

Table VII - (S.B.) Seasonal Benefit Claimants as a Percentage of Total Claimants, by Province 1961-60 and 1959-60 Periods.

Seasonal Benefit Period	Canada	Nfld.	P.E.I.	N.S.	N.B.	Que.	Ont.	Man.	Sask.	Alta.	B.C.
	per cent										
<u>1960-61 Period</u>	27.4	48.2	53.1	32.0	39.5	27.7	22.7	22.8	25.1	19.8	26.8
December 30, 1960	17.8	41.3	43.8	20.6	27.3	17.5	13.9	13.1	15.7	11.7	18.1
January 31, 1961	24.2	46.9	51.8	31.0	36.4	23.9	19.9	17.8	20.2	16.3	23.7
February 28, 1961	28.6	50.5	55.2	34.6	42.2	28.1	23.9	22.9	24.0	20.3	29.3
March 30, 1961	31.7	51.8	58.1	35.0	44.5	32.4	26.4	27.8	31.4	23.9	32.0
April 28, 1961	34.6	50.1	57.0	37.9	45.0	36.2	30.1	32.0	35.5	26.1	32.5
<u>1959-60 Period</u>	25.9	46.7	49.4	34.8	39.7	25.0	21.3	23.0	24.4	18.7	24.3
December 31, 1959	17.0	34.9	43.4	24.4	28.7	15.4	13.3	15.0	14.9	12.7	16.9
January 29, 1960	22.6	45.7	38.5	34.2	36.2	21.3	18.4	16.9	19.4	15.1	21.4
February 29, 1960	26.7	50.4	53.7	38.5	42.1	24.1	22.1	21.8	24.1	18.4	27.2
March 31, 1960	30.2	51.4	56.2	39.7	45.4	29.7	24.8	28.8	29.7	21.3	29.1
April 29, 1960	32.0	49.6	57.8	35.0	43.8	33.1	27.5	31.2	34.6	24.5	27.5

APPENDIX

Glossary of Terms

Insured population: For purposes of this report, the insured population is defined as the number of persons estimated as currently in contact with the Unemployment Insurance Commission either as contributors or as claimants. The estimates are revised once a year when data from the book renewal are available.

Employed population: The number of persons estimated as currently contributing under the scheme.

Claimant population: The count of persons currently reporting to the local offices as at the end of the month. An exception occurs in the month which serves as a benchmark, i.e., May or June, when the claimant count represents the number of persons reporting to local offices as claimants during the first two weeks of book renewal.

Initial claim: An application for benefit from an insured person for whom there is no benefit period in existence. This category includes both regular and seasonal claims, since it is impossible to determine, at the time of filing a claim, the type of benefit for which the claimant will subsequently qualify. On an initial claim the claimant's contribution history for the two years preceding the claim is examined. This is required in order to test the claimant's attachment to insured employment and thus determine the type of benefit for which he is eligible, if at all. In cases of eligibility, this record is used to calculate the weekly rate of benefit and maximum entitlement for the benefit period. Only one initial claim is required for each benefit period.

Benefit period: A period commencing with the week in which the initial claim is made, provided the qualifying conditions are fulfilled. The maximum length of the benefit period is 52 weeks, in the case of claimants qualifying under the regular terms of the Act. Seasonal benefit periods may be established only from December 1 to mid-May, with a maximum length of 24 weeks. In either case, however, the benefit period terminates with exhaustion of benefit.

Renewal claim: An application for benefit from an insured person during the currency of a benefit period. As in the case of initial claims, this category includes renewal claims from all classes of claimants, i.e., regular, seasonal and fishing.

Initial and renewal claims filed: The number of new cases of recorded unemployment among insured persons during a period. However, an initial claim representing a request for re-establishment of a benefit period with no actual interruption in the period on claim would not constitute a new case of

unemployment. To the extent that such claims are filed in any month, these claims overstate the number of new cases.

Revised claims: Those, other than initial or renewal, which must be considered by an insurance officer, e.g., involving dependency, extension of qualifying period, etc. A revised claim is thus an administrative device to initiate action for reconsideration of an existing initial or renewal claim.

Claimants currently reporting to local offices: All persons currently reporting to local offices to claim unemployment insurance benefit, either regular, seasonal or fishing. Under the Unemployment Insurance Act a person may claim benefit for any week during which he did not work a full working week.

Number of weeks on claim: The cumulative number of weeks during which a claimant has reported to prove unemployment during the current period on claim. The count commences with the week in which the initial (or renewal) claim is filed and continues unbroken so long as the claimant continues to report as directed. Cases occur in which a spell of unemployment extends beyond the termination of a benefit period and a new benefit period is immediately established with no actual interruption of the period on claim. In such cases the cumulative number of weeks is transferred from the previous claim document to that covering the subsequent benefit period and the count continued. This procedure applies also for contiguous periods on regular and seasonal benefit. Excluded from the count are any weeks for which a claimant reported "non-availability" during a complete week.

Entitled to benefit: For purposes of this report, this category comprises those adjudications arising from initial claims on which a benefit period (regular, seasonal or fishing) is shown as established and no disqualification imposed and adjudications indicating "approval" on renewal claims, either regular, seasonal or fishing.

Not entitled to benefit: Claimants disqualified on initial and renewal claims, and those for whom the adjudication on an initial claim was to the effect that the claimant was ineligible to establish either a regular, seasonal or fishing benefit period.

Benefit period not established: The minimum contribution requirements for any type of benefit have not been met. This figure thus represents the net total of persons with insufficient contributions to establish a benefit period under either the regular, seasonal or fishing benefit provisions, based on decisions arising from initial claims only. Subsequent decisions arising from a revised claim and

constituting a reversal of the initial adjudication are not taken into account, but such decisions would reduce the number of benefit periods not established.

Failure rate: The number of initial claims on which a benefit period was not established in a month expressed as a per cent of initial claims cleared during that month. During the period when seasonal benefit is effective, the failure rate represents the net cases with insufficient contributions to qualify for either regular, seasonal or fishing benefit. In some cases additional contributions are located necessitating a recomputation whereby the claimant subsequently establishes a benefit period. No account is taken of such cases.

Disqualification: A disqualification is imposed because of circumstances surrounding the claim which render the claimant ineligible for the receipt of benefit either for a stated period or so long as the condition causing the disqualification continues. Where it is established that loss of employment was voluntary on the part of the claimant, i.e., he left employment of his own volition or was dismissed because of misconduct, the maximum disqualification is six weeks; claimants participating in a labour dispute in which they are directly interested are disqualified for the duration of the work stoppage. In assessing the number of cases of disqualification, no distinction is made as to the type of claim, hence disqualifications arising from revised claims are included. The cases mentioned here serve as examples only and do not constitute a complete summary of conditions under which a disqualification may be imposed. Sections 59-66 of the Act contain a description of these conditions.

Weeks compensated: Calendar weeks in respect of which some benefit, either regular, seasonal or fishing, was paid. A compensated week is counted in the month in which the copy of the payment voucher is received in the District Treasury Office, which is not necessarily the month in which the week of unemployment occurred.

Amount of benefit: The sum of all benefit payments made during the month. This comprises regular, seasonal or fishing benefit.

Complete week: A week in respect of which a claimant received the full weekly rate of benefit authorized on that benefit period.

Partial week: A week for which a claimant received less than the full weekly rate authorized. A partial week may be due to excess earnings resulting in a reduced payment in direct proportion to the amount of such earnings. If a claimant was "not available for work" on any day or days during a week, a reduction will be made in the weekly rate proportionate to the number of days of "non-availability". A reduction will occur also if a portion of a week was designated as part of the prescribed waiting period.

Excess earnings: Earnings during a week in excess of the allowable earnings for a claimant's weekly benefit rate. As an example, a claimant whose weekly rate is \$30.00 may earn up to \$15.00 in a week without suffering a reduction in benefit; however, in a week where he earns \$17.00 his benefit will be reduced to \$28.00.

Beneficiaries: Persons who received one or more benefit payments. The estimate, based on the number of payment documents, represents the average weekly number of beneficiaries.

Seasonal benefit: Benefit payable during the period commencing with the Sunday prior to December 1 and ending with the Saturday after May 15, to certain classes of claimants unable to fulfil the requirements under the regular benefit provisions of the Act. Claimants in class A must prove 15 contributions since the Saturday preceding the 31st day of March immediately prior to the date of claim, while qualification under class B is contingent upon a regular benefit period having terminated since the Saturday following the 15th day of May immediately prior to the claim.

Fishermen: For purposes of regular benefit, a fisherman is a claimant showing five or more fishing contribution weeks during the last 52 weeks. For purposes of seasonal benefit, however, any claimant whose qualifying contributions include even one fishing contribution week is classed as a fishing claimant.

Fishing contribution week: Any week for which a fishing contribution is recorded, whether or not a contribution was also made in respect of other insured employment. Specially designed stamps are used to record insured employment in fishing and employers using the bulk pay method must report employee's fishing contributions separately from those relating to other insurable employment.

STATISTICS CANADA LIBRARY
BIBLIOTHÈQUE STATISTIQUE CANADA



1010509268

