

21
CATALOGUE No.

73-001

MONTHLY



DOES NOT CIRCULATE
NE PAS PRÉTER
STATISTICAL REPORT ON THE OPERATION OF
THE UNEMPLOYMENT INSURANCE ACT
JULY 1963

(Compiled from material supplied by the Unemployment Insurance Commission)

Published by Authority of
The Minister of Trade and Commerce

DOMINION BUREAU OF STATISTICS
Labour Division
Unemployment Insurance Section

September 1963
8004-509

Price \$2.00 per annum

Vol. 22—No. 7

TABLE OF CONTENTS

| | Page |
|--|------|
| Chart, Unemployment Insurance Activities | 3 |
| Commentary: | |
| Claims and Benefit Payments During July | 4 |
| Industrial Classification of Persons Filing New Claims During June | 5 |

List of Tables

Consolidated Data on Claims for Regular, Seasonal and Fishing Benefit:

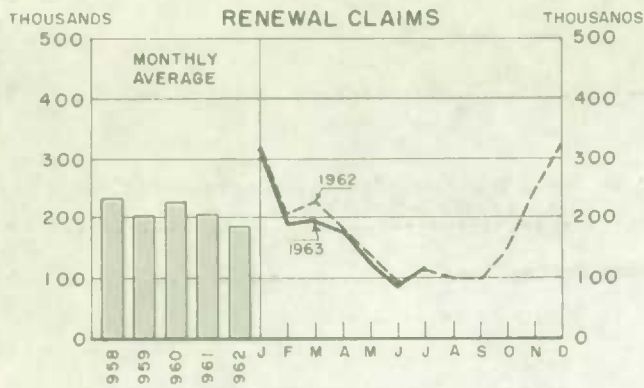
| | |
|---|----|
| Summary Table | 7 |
| Table 1. - Estimates of the Insured Population under the Unemployment Insurance Act | 8 |
| Table 2. - Number of Initial and Renewal Claims Filed in Local Offices in each Province | 8 |
| Table 3. - Claimants Currently Reporting to Local Offices by Number of Weeks on Claim, Province and Sex, and Percentage Postal | 9 |
| Table 4. - Disposition of Initial and Renewal Claims, and Claims Pending at the End of the Month, by Province | 10 |
| Table 5. - Number of Claimants Not Entitled to Benefit in each Province, with Chief Reasons for Non-Entitlement | 11 |
| Table 6. - Estimates of the Number of Beneficiaries, by Province | 12 |
| Table 7. - Benefit Payments, Showing Number of Weeks and Amount Paid, by Province | 12 |
| Table 8. - Number of Weeks Compensated, Classified as to Complete and Partial Weeks, and Showing Separately the Number of Partial Weeks Due to Excess Earnings, by Province | 13 |
| Glossary of Terms | 14 |

Historical data since 1941 are contained in the July 1961 issue in this series, while annual data for the calendar years 1962 and 1961 are included in the January 1963 issue in this series.

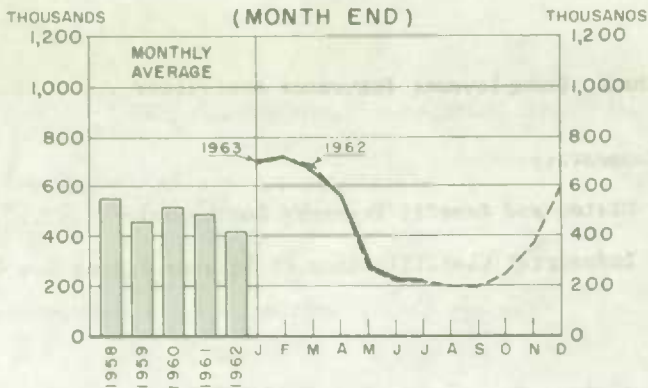
For information regarding the personal characteristics, occupational and industrial status of both the insured population and persons establishing benefit periods, see the "Annual Report on Benefit Periods Established and Terminated under the Unemployment Insurance Act", D.B.S. Labour Division, Unemployment Insurance Section.

UNEMPLOYMENT INSURANCE ACTIVITIES

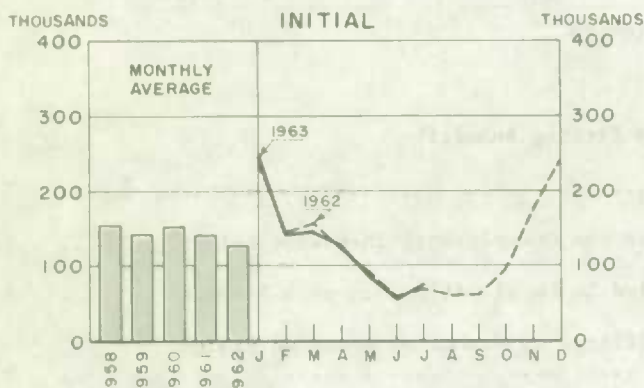
INITIAL AND RENEWAL CLAIMS



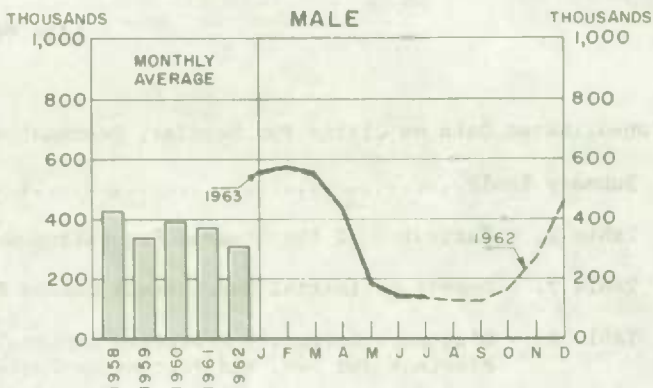
CLAIMANTS (MONTH END)



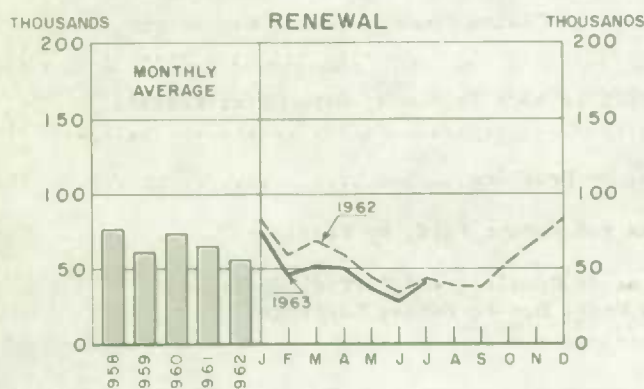
INITIAL



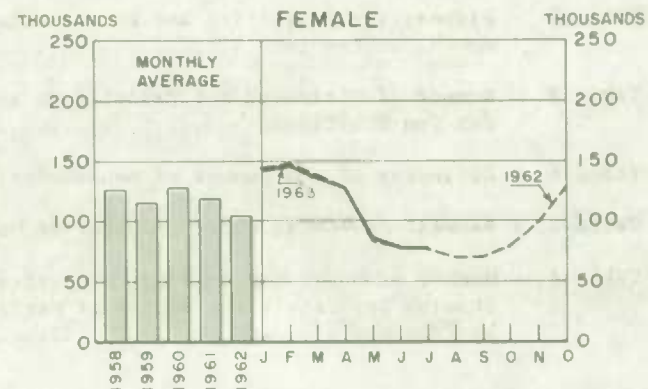
MALE



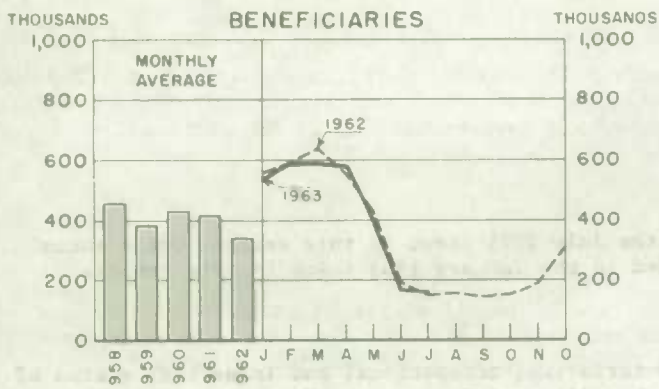
RENEWAL



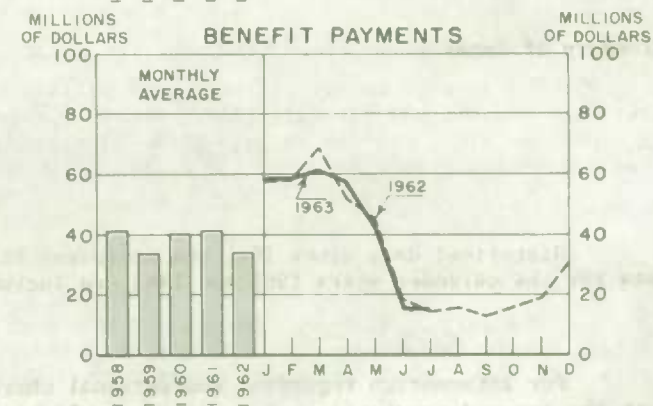
FEMALE



BENEFICIARIES



BENEFIT PAYMENTS



CLAIMS AND BENEFIT PAYMENTS

JULY 1963

Claimants at month-end: volume and type

Claimants for unemployment insurance benefit on July 31 numbered 219,000, virtually unchanged from both the June 28 total of 220,300 and the July 31, 1962 figure of 212,000.

The per cent distribution by number of weeks on claim is as follows:

| Number of weeks on claim | Both sexes | | | Male | | | Female | | |
|--------------------------------|-----------------|-----------------|-----------------|-----------------|-----------------|-----------------|-----------------|-----------------|-----------------|
| | July 31 1963 | June 28 1963 | July 31 1962 | July 31 1963 | June 28 1963 | July 31 1962 | July 31 1963 | June 28 1963 | July 31 1962 |
| Total | 100 | 100 | 100 | 100 | 100 | 100 | 100 | 100 | 100 |
| 1 - 4 | 45 | 37 | 45 | 48 | 39 | 49 | 38 | 34 | 40 |
| 5 - 13 | 26 | 29 | 24 | 25 | 29 | 22 | 29 | 28 | 26 |
| 14 - 26 | 17 | 22) | 31 | 15 | 20) | 29 | 19 | 24) | 34 |
| | |) | | |) | | |) | |
| 27 or more | 12 | 12) | | 11 | 12) | | 14 | 14) | |

The annual holiday period in conjunction with lay-offs for model changeover in the automobile industry is reflected in the high proportion 1 - 4 weeks on claim on July 31. This proportion was substantially greater for men than for women.

Initial and renewal claims

A total of 112,900 initial and renewal claims were filed during July. This is almost 30,000 higher than for June but is unchanged from July 1962. Close to 95 per cent of the July claims (105,500) were filed by persons separating from employment during the month.

Beneficiaries and benefit payments

The average weekly estimate of beneficiaries was 150,800 for July, in comparison with 168,800 for June and 150,400 for July 1962. Benefit payments amounted to \$15.5 million in July, \$16.0 million in June and \$14.5 million in July 1962. The average weekly payment was \$23.37 for July, \$23.68 for June and \$22.98 for July 1962.

Claims by province

The July 31 claimant count was lower than on June 28 in all provinces except Prince Edward Island (where there was no change) and Ontario which showed a 20 per cent increase. In comparison with last year, small increases occurred in Quebec, Ontario, Alberta and British Columbia.

Percentage changes in month-end claimant count

| | June 28 to July 31 1963 | | | July 31, 1962 to July 31, 1963 | | | June 29 to July 31 1962 | | |
|--------|----------------------------|------|--------|-----------------------------------|------|--------|----------------------------|------|--------|
| | Total | Male | Female | Total | Male | Female | Total | Male | Female |
| Canada | - 1 | - 1 | - | + 3 | + 5 | + 1 | - 1 | - 1 | - 1 |
| Nfld. | - 19 | - 25 | + 10 | - 15 | - 17 | - 2 | - 12 | - 14 | - 1 |
| P.E.I. | - | + 3 | - 4 | - 2 | - 5 | + 4 | + 9 | + 13 | + 3 |
| N.S. | - 19 | - 23 | - 8 | - 8 | - 11 | + 2 | - 2 | - 2 | - 5 |
| N.B. | - 12 | - 15 | - 7 | - | - 3 | + 7 | - 5 | - 3 | - 8 |
| Que. | - 4 | - 7 | + 1 | + 6 | + 9 | + 1 | - 5 | - 7 | + 1 |
| Ont. | + 21 | + 32 | + 5 | + 7 | + 12 | + 1 | + 12 | + 19 | + 3 |
| Man. | - 31 | - 42 | - 12 | - 13 | - 19 | - 5 | - 14 | - 19 | - 6 |
| Sask. | - 15 | - 22 | - 7 | - 14 | - 14 | - 14 | - 11 | - 22 | + 4 |
| Alta. | - 15 | - 22 | - | + 4 | + 4 | + 3 | - 17 | - 23 | - 6 |
| B.C. | - 10 | - 12 | - 8 | + 2 | - 1 | + 8 | - 11 | - 12 | - 9 |

The July claim intake was up over June in all provinces except Newfoundland and Nova Scotia where declines occurred. Almost three-quarters of the increased volume took place in Ontario and was associated with plant shut-downs as mentioned above.

Percentage changes in claims filed

| | June to July 1963 | | | July 1962 to July 1963 | | | June to July 1962 | | |
|--------|-------------------|---------|---------|------------------------|---------|---------|-------------------|---------|---------|
| | Total | Initial | Renewal | Total | Initial | Renewal | Total | Initial | Renewal |
| Canada | + 36 | + 35 | + 39 | - | + 4 | - 5 | + 20 | + 17 | + 25 |
| Nfld. | - 26 | - 33 | - 5 | - 32 | - 20 | - 47 | + 28 | - 6 | + 145 |
| P.E.I. | + 17 | + 20 | + 11 | - 9 | - 12 | - 3 | + 70 | + 80 | + 51 |
| N.S. | - 9 | - 21 | + 28 | - 20 | - 15 | - 28 | + 3 | + 7 | - 3 |
| N.B. | + 31 | + 33 | + 28 | - 10 | - 2 | - 24 | + 32 | + 28 | + 39 |
| Que. | + 21 | + 16 | + 31 | - 1 | - 1 | - | + 12 | + 6 | + 24 |
| Ont. | + 77 | + 83 | + 65 | + 10 | + 14 | + 3 | + 39 | + 42 | + 33 |
| Man. | + 3 | + 2 | + 6 | - 12 | - 3 | - 28 | - 7 | - 11 | - |
| Sask. | + 11 | + 11 | + 10 | - 19 | - 17 | - 23 | + 9 | + 13 | + 1 |
| Alta. | + 11 | + 7 | + 21 | - 5 | + 3 | - 16 | + 2 | - 8 | + 22 |
| B.C. | + 8 | + 7 | + 8 | - 10 | - 2 | - 20 | + 1 | - 5 | + 12 |

Industrial Classification of Persons Filing an Initial Claim(1)
for Unemployment Insurance Benefit during June 1963

Some 46,400 persons filed initial claims upon separating from employment during June. This compares with 50,700 for June 1962. The volume of claims was lower than for a year ago in all provinces except Newfoundland and Nova Scotia, where slight increases occurred.

At the national level, there was virtually no variation from a year ago in the industrial composition of the new cases of recorded unemployment. However, this was not so at the provincial level. The most marked variations from one year ago were in Newfoundland and in Nova Scotia where there was a relatively large volume of claims from mine workers. In Newfoundland, the claims arose out of reduced operations in iron mines while in Nova Scotia claims were taken in anticipation of a mass lay-off associated with plant operational difficulties in coal mines.

Table 1 presents provincial totals of new claims by industry of last employment, June 1963 and 1962, while quarterly data showing the industrial composition of claims at the national level are provided in Table 2.

(1) Initial claims taken on behalf of persons exhausting benefit and seeking re-establishment of credits are excluded. Excluded also are persons separating from employment and filing renewal claims.

Table 1. Percentage distribution of claims(1) by Industry and Province
June 1963 and 1962

| Industry Group | | Canada | Nfld. | P.E.I. | N.S. | N.B. | Que. | Ont. | Man. | Sask. | Alta. | B.C. |
|---------------------------------|------|--------|-------|--------|------|------|------|------|------|-------|-------|------|
| Total new cases ('000) | 1963 | 46.4 | 1.2 | (2) | 2.0 | 1.4 | 14.8 | 16.9 | 1.7 | 0.8 | 2.4 | 5.1 |
| | 1962 | 50.7 | 0.9 | (2) | 1.9 | 1.5 | 16.5 | 18.2 | 2.0 | 1.0 | 2.7 | 6.0 |
| Per cent distribution | | | | | | | | | | | | |
| Forestry (mainly logging) | 1963 | 2 | 3 | - | 1 | 3 | 1 | 1 | 2 | - | 1 | 6 |
| | 1962 | 2 | 10 | - | (3) | 7 | 2 | 1 | 1 | 1 | (3) | 4 |
| Fishing(4) and trapping | 1963 | (3) | 1 | 6 | 2 | 1 | - | - | - | - | - | 1 |
| | 1962 | (3) | 5 | - | 2 | (3) | - | - | 1 | - | - | 1 |
| Mining | 1963 | 4 | 44 | 2 | 33 | 3 | 1 | 1 | 2 | 3 | 5 | 2 |
| | 1962 | 2 | 2 | 1 | 8 | 3 | 1 | 1 | 3 | 2 | 9 | 2 |
| Manufacturing | 1963 | 35 | 7 | 20 | 19 | 30 | 37 | 46 | 31 | 13 | 17 | 19 |
| | 1962 | 33 | 13 | 22 | 27 | 22 | 38 | 41 | 24 | 14 | 16 | 22 |
| Construction | 1963 | 13 | 13 | 10 | 7 | 11 | 14 | 13 | 11 | 11 | 17 | 15 |
| | 1962 | 11 | 13 | 7 | 8 | 10 | 8 | 10 | 13 | 11 | 14 | 18 |
| Transp., commun., & other util. | 1963 | 5 | 4 | 7 | 7 | 10 | 5 | 3 | 6 | 6 | 7 | 9 |
| | 1962 | 9 | 8 | 6 | 13 | 14 | 10 | 8 | 8 | 8 | 6 | 9 |
| Trade | 1963 | 16 | 14 | 31 | 13 | 23 | 14 | 15 | 22 | 36 | 25 | 14 |
| | 1962 | 17 | 18 | 34 | 16 | 20 | 14 | 18 | 20 | 23 | 19 | 14 |
| Service | 1963 | 13 | 8 | 14 | 12 | 12 | 12 | 12 | 16 | 21 | 17 | 18 |
| | 1962 | 15 | 12 | 13 | 13 | 12 | 15 | 13 | 15 | 25 | 19 | 18 |
| Public admin. & defence | 1963 | 7 | 5 | 7 | 4 | 4 | 10 | 4 | 4 | 5 | 6 | 11 |
| | 1962 | 7 | 17 | 12 | 10 | 7 | 9 | 4 | 10 | 8 | 8 | 9 |
| Other | 1963 | 4 | 2 | 2 | 1 | 4 | 5 | 4 | 6 | 5 | 5 | 6 |
| | 1962 | 4 | 2 | 5 | 1 | 5 | 3 | 4 | 5 | 8 | 9 | 3 |
| Total cases | 1963 | 100 | 100 | 100 | 100 | 100 | 100 | 100 | 100 | 100 | 100 | 100 |
| | 1962 | 100 | 100 | 100 | 100 | 100 | 100 | 100 | 100 | 100 | 100 | 100 |

Table 2. Percentage distribution of claims by Industry, quarterly intervals

| Industry Group | June 1963 | March 1963 | December 1962 | September 1962 | June 1962 |
|---|-----------|------------|---------------|----------------|-----------|
| Total new cases ('000) | 46.4 | 83.9 | 212.2 | 55.5 | 50.7 |
| Per cent distribution | | | | | |
| Forestry (mainly logging) | 2 | 15 | 7 | 3 | 2 |
| Fishing(4) and trapping | (3) | 1 | 6 | (3) | (3) |
| Mining | 4 | 3 | 2 | 2 | 2 |
| Manufacturing | 35 | 29 | 28 | 30 | 33 |
| Construction | 13 | 16 | 24 | 14 | 11 |
| Transportation, communication and other utilities | 5 | 7 | 10 | 8 | 9 |
| Trade | 16 | 14 | 9 | 18 | 17 |
| Service | 13 | 10 | 7 | 15 | 15 |
| Public admin. and defence | 7 | 3 | 5 | 6 | 7 |
| Other | 4 | 2 | 3 | 5 | 4 |
| All cases | 100 | 100 | 100 | 100 | 100 |

(1) Initial claims taken on behalf of persons exhausting benefit and seeking re-establishment of credits are excluded. Excluded also are persons separating from employment and filing renewal claims.

(2) Less than 500.

(3) Less than 1/2 of 1 per cent.

(4) In coding cases to the fishing industry persons whose reported occupation under covered employment was "fisherman" were coded to the fishing industry even though the nature of business of the most recent employer was other than fishing. This treatment is slightly different from the general coding practice of assigning a single code on the basis of the principal activity. Since fishermen report themselves usually as self-employed, the number of others is relatively small.

.. Not available.

- Nil.

Summary table

| Activity | July 1963 | June 1963 | July 1962 | % Change from | | Cumulative data | | | |
|--|--------------|--------------|--------------|---------------|--------------|--------------------|---------|--------------------------|---------|
| | | | | June 1963 | July 1962 | January to July | | 12 months ending July | |
| | | | | | | 1963 | 1962 | 1963 | 1962 |
| | (Thousands) | | | | | (Thousands) | | (Thousands) | |
| Insured population as at month-end | .. | 4,077 | 3,996 | .. | .. | .. | 4,083* | .. | 4,045* |
| Initial and renewal claims filed | 113 | 83 | 112 | + 36 | - | 1,198 | 1,277 | 2,113 | 2,289 |
| Claimants currently reporting to local offices | 219 | 220 | 212 | - 1 | + 3 | 484* | 480* | 416* | 423* |
| Beneficiaries (weekly average) | 151 | 169 | 150 | - 11 | - | 440* | 445* | 331* | 348* |
| Weeks compensated | 664 | 675 | 631 | - 2 | + 5 | 12,579 | 12,961 | 16,546 | 17,301 |
| Benefit paid | \$ 15,506 | 15,987 | 14,512 | - 3 | + 7 | 308,812 | 314,892 | 403,128 | 417,340 |

| | | | | | | | | | |
|---------------------------|----------|-------|-------|-----|-----|-------|-------|-------|-------|
| Average weekly benefit | \$ 23.37 | 23.68 | 22.98 | - 1 | + 2 | 24.55 | 24.30 | 24.36 | 24.12 |
|---------------------------|----------|-------|-------|-----|-----|-------|-------|-------|-------|

* Monthly average.

Table 1. - Estimates of the Insured Population under the Unemployment Insurance Act.
(Revised) (1)

| End of: | Total | Employed | Claimants |
|-----------------|-----------|-----------|------------|
| 1963 - June | 4,077,000 | 3,856,700 | 220,300 |
| May | 3,996,000 | 3,725,100 | 270,900 |
| April | 4,173,000 | 3,607,100 | 565,900 |
| March | 4,242,000 | 3,556,700 | 685,300 |
| February | 4,264,000 | 3,543,500 | 720,500 |
| January | 4,259,000 | 3,555,900 | 703,100 |
| 1962 - December | 4,223,000 | 3,631,000 | 592,000 |
| November | 4,110,000 | 3,735,800 | 374,200 |
| October | 4,009,000 | 3,764,900 | 244,100 |
| September | 3,998,000 | 3,800,200 | 197,800 |
| August | 4,022,000 | 3,823,300 | 198,700 |
| July | 3,996,000 | 3,784,000 | 212,000 |
| June | 3,977,000 | 3,762,700 | 214,300 |
| May | 4,084,100 | 3,653,300 | 430,800(2) |

(1) Revised on the basis of book renewal at June 1, 1962.

(2) The number of persons reporting to local offices as claimants during the first two weeks of book renewal. For other months, the claimants are as shown in Table 3.

Table 2. - Number of Initial and Renewal Claims Filed in Local Offices in each Province. (1)

| Prov. | 1963 - July - 1962 | | | | | |
|----------|--------------------|---------|---------|---------|---------|---------|
| | Total | Initial | Renewal | Total | Initial | Renewal |
| Canada - | 112,856 | 72,302 | 40,554 | 112,362 | 69,450 | 42,912 |
| Nfld. | 1,492 | 988 | 504 | 2,185 | 1,236 | 949 |
| P.E.I. | 355 | 237 | 118 | 392 | 270 | 122 |
| N.S. | 3,239 | 2,115 | 1,124 | 4,046 | 2,480 | 1,566 |
| N.B. | 3,425 | 2,342 | 1,083 | 3,811 | 2,390 | 1,421 |
| Que. | 32,966 | 20,059 | 12,907 | 33,180 | 20,298 | 12,882 |
| Ont. | 52,512 | 34,306 | 18,206 | 47,848 | 30,186 | 17,662 |
| Man. | 2,895 | 2,037 | 858 | 3,290 | 2,094 | 1,196 |
| Sask. | 1,432 | 1,027 | 405 | 1,768 | 1,240 | 528 |
| Alta. | 4,375 | 2,811 | 1,564 | 4,589 | 2,717 | 1,872 |
| B.C. | 10,165 | 6,380 | 3,785 | 11,253 | 6,539 | 4,714 |

(1) In addition, revised claims received numbered 33,257.

Table 3. - Claimants Currently Reporting to Local Offices by Number of Weeks on Claim, Province and Sex, and Percentage Postal.

(Counted on last working day of the month)

| Province and Sex | Total claimants | Number of weeks on claim (based on 20 per cent sample) | | | | Percent- age Postal | July 31, 1962 total claimants |
|---------------------|--------------------|---|--------|--------|-------------------|---------------------------|--|
| | | 1-4 | 5-13 | 14-26 | 27 or more (1) | | |
| July 31, 1963 | | | | | | | |
| CANADA - | 218,974 | 98,100 | 57,549 | 36,469 | 26,856 | 29.2 | 211,975 |
| MALE | 140,675 | 67,968 | 35,034 | 21,600 | 16,073 | 30.4 | 134,611 |
| FEMALE | 78,299 | 30,132 | 22,515 | 14,869 | 10,783 | 27.1 | 77,364 |
| Nfld. | 5,021 | 1,637 | 1,493 | 1,009 | 882 | 62.6 | 5,883 |
| Male | 4,010 | 1,401 | 1,143 | 757 | 709 | 65.2 | 4,848 |
| Female | 1,011 | 236 | 350 | 252 | 173 | 52.0 | 1,035 |
| P.E.I. | 806 | 308 | 259 | 116 | 123 | 65.3 | 819 |
| Male | 504 | 191 | 176 | 66 | 71 | 72.8 | 528 |
| Female | 302 | 117 | 83 | 50 | 52 | 52.6 | 291 |
| N.S. | 9,129 | 3,015 | 2,858 | 1,831 | 1,425 | 39.4 | 9,927 |
| Male | 6,616 | 2,208 | 2,179 | 1,334 | 895 | 39.7 | 7,458 |
| Female | 2,513 | 807 | 679 | 497 | 530 | 38.8 | 2,469 |
| N.B. | 8,141 | 3,175 | 2,245 | 1,786 | 935 | 47.3 | 8,159 |
| Male | 5,798 | 2,375 | 1,552 | 1,345 | 526 | 48.7 | 5,971 |
| Female | 2,343 | 800 | 693 | 441 | 409 | 43.7 | 2,188 |
| Que. | 66,712 | 27,104 | 20,551 | 11,611 | 7,446 | 26.8 | 63,101 |
| Male | 43,914 | 18,740 | 13,142 | 7,501 | 4,531 | 27.9 | 40,449 |
| Female | 22,798 | 8,364 | 7,409 | 4,110 | 2,915 | 24.9 | 22,652 |
| Ont. | 85,663 | 46,346 | 18,856 | 11,386 | 9,075 | 23.6 | 79,693 |
| Male | 54,233 | 32,801 | 10,344 | 5,907 | 5,181 | 23.4 | 48,552 |
| Female | 31,430 | 13,545 | 8,512 | 5,479 | 3,894 | 23.9 | 31,141 |
| Man. | 7,406 | 2,325 | 1,988 | 1,894 | 1,199 | 28.3 | 8,526 |
| Male | 4,063 | 1,221 | 1,128 | 1,101 | 613 | 31.6 | 5,021 |
| Female | 3,343 | 1,104 | 860 | 793 | 586 | 24.2 | 3,505 |
| Sask. | 3,844 | 1,385 | 911 | 847 | 701 | 40.8 | 4,482 |
| Male | 1,914 | 686 | 416 | 421 | 391 | 45.2 | 2,238 |
| Female | 1,930 | 699 | 495 | 426 | 310 | 36.4 | 2,244 |
| Alta. | 10,310 | 3,844 | 2,529 | 1,996 | 1,941 | 61.0 | 9,937 |
| Male | 6,370 | 2,392 | 1,444 | 1,116 | 1,418 | 65.4 | 6,117 |
| Female | 3,940 | 1,452 | 1,085 | 880 | 523 | 54.0 | 3,820 |
| B.C. | 21,942 | 8,961 | 5,859 | 3,993 | 3,129 | 22.2 | 21,448 |
| Male | 13,253 | 5,953 | 3,510 | 2,052 | 1,738 | 23.8 | 13,429 |
| Female | 8,689 | 3,008 | 2,349 | 1,941 | 1,391 | 19.9 | 8,019 |

(1) The bulk of the cases in this group were on claim from 27-39 weeks.

Note: Values less than 50 subject to relatively large sampling variability.

Table 4. - Disposition of Initial and Renewal Claims and Claims Pending at the End of the Month.(1)

| Province | A d j u d i c a t e d | | | | | P e n d i n g | |
|----------|-----------------------|---------------------|---------|-------------------------|---------|---------------|---------|
| | Total | Entitled to Benefit | | Not Entitled to Benefit | | Initial | Renewal |
| | | Initial | Renewal | Initial | Renewal | | |

July - 1963

| | | | | | | | |
|----------|---------|--------|--------|--------|-------|--------|--------|
| Canada - | 101,592 | 40,162 | 32,928 | 23,724 | 4,778 | 28,924 | 12,429 |
| Nfld. | 1,840 | 512 | 354 | 806 | 168 | 442 | 170 |
| P.E.I. | 356 | 152 | 101 | 85 | 18 | 79 | 33 |
| N.S. | 3,705 | 1,828 | 898 | 823 | 156 | 622 | 337 |
| N.B. | 3,226 | 1,357 | 873 | 875 | 121 | 656 | 310 |
| Que. | 31,003 | 11,474 | 10,365 | 7,647 | 1,517 | 8,116 | 4,350 |
| Ont. | 43,040 | 17,945 | 14,996 | 8,330 | 1,769 | 14,910 | 5,081 |
| Man. | 2,986 | 1,247 | 751 | 835 | 153 | 676 | 223 |
| Sask. | 1,353 | 568 | 312 | 413 | 60 | 393 | 163 |
| Alta. | 4,349 | 1,628 | 1,312 | 1,206 | 203 | 1,162 | 646 |
| B.C. | 9,734 | 3,451 | 2,966 | 2,704 | 613 | 1,868 | 1,116 |

July - 1962

| | | | | | | | |
|----------|---------|--------|--------|--------|-------|--------|--------|
| Canada - | 103,169 | 38,676 | 35,902 | 24,080 | 4,511 | 25,258 | 11,151 |
| Nfld. | 1,916 | 597 | 666 | 559 | 94 | 515 | 317 |
| P.E.I. | 357 | 160 | 97 | 83 | 17 | 70 | 19 |
| N.S. | 3,877 | 1,532 | 1,327 | 859 | 159 | 747 | 389 |
| N.B. | 3,604 | 1,435 | 1,210 | 822 | 137 | 703 | 410 |
| Que. | 33,182 | 13,098 | 11,056 | 7,744 | 1,284 | 6,655 | 3,513 |
| Ont. | 40,847 | 15,281 | 14,826 | 8,914 | 1,826 | 12,466 | 4,050 |
| Man. | 2,936 | 1,161 | 952 | 691 | 132 | 680 | 514 |
| Sask. | 1,657 | 688 | 432 | 468 | 69 | 378 | 158 |
| Alta. | 4,300 | 1,531 | 1,512 | 1,050 | 207 | 1,086 | 543 |
| B.C. | 10,493 | 3,193 | 3,824 | 2,890 | 586 | 1,958 | 1,238 |

(1) In addition 32,482 revised claims were disposed of. Of these, 2,934 were special requests not granted and 2,048 were appeals by claimants. There were 9,073 revised claims pending at the end of the month.

Table 5. - Number of Claimants Not Entitled to Benefit in each Province during July 1963 and 1962 with Chief Reasons for Non-entitlement.

| Chief Reasons for Non-entitlement | Year | Canada | Nfld. | P.E.I. | N.S. | N.B. | Que. | Ont. | Man. | Sask. | Alta. | B.C. |
|---|---------|--------|-------|--------|-------|------|-------|--------|-------|-------|-------|-------|
| Benefit period not established | 1963(1) | 12,412 | 257 | 39 | 388 | 547 | 4,253 | 4,225 | 446 | 178 | 627 | 1,452 |
| | 1962 | 13,540 | 388 | 40 | 485 | 460 | 4,654 | 4,699 | 345 | 218 | 589 | 1,662 |
| Claimants disqualified | 1963 | 30,622 | 906 | 108 | 1,166 | 910 | 9,252 | 11,161 | 1,195 | 714 | 1,458 | 3,752 |
| | 1962 | 29,120 | 445 | 107 | 1,000 | 929 | 9,508 | 10,423 | 979 | 623 | 1,577 | 3,529 |
| Not unemployed | 1963 | 1,053 | 468 | 10 | 51 | 47 | 133 | 213 | 30 | 26 | 26 | 49 |
| | 1962 | 710 | 63 | 16 | 53 | 42 | 187 | 197 | 32 | 24 | 23 | 73 |
| Not capable of and not available for work | 1963 | 9,776 | 113 | 29 | 331 | 282 | 2,853 | 3,702 | 603 | 321 | 423 | 1,119 |
| | 1962 | 10,405 | 121 | 32 | 264 | 313 | 3,387 | 3,668 | 424 | 239 | 655 | 1,302 |
| Loss of work due to a labour dispute | 1963 | 493 | 20 | - | - | 2 | 183 | 219 | - | - | 1 | 68 |
| | 1962 | 327 | - | - | - | - | 57 | 238 | 3 | 29 | - | - |
| Refused offer of work and neglected opportunity to work | 1963 | 1,604 | 3 | 16 | 76 | 28 | 533 | 606 | 60 | 48 | 114 | 120 |
| | 1962 | 1,575 | 7 | 4 | 50 | 48 | 578 | 598 | 44 | 22 | 77 | 147 |
| Discharged for misconduct | 1963 | 1,417 | 37 | 5 | 49 | 37 | 566 | 449 | 33 | 15 | 81 | 145 |
| | 1962 | 1,166 | 22 | - | 69 | 36 | 417 | 444 | 23 | 12 | 53 | 90 |
| Voluntarily left employment without just cause | 1963 | 6,920 | 107 | 28 | 243 | 175 | 2,015 | 2,515 | 261 | 113 | 421 | 1,042 |
| | 1962 | 6,575 | 94 | 23 | 217 | 195 | 2,135 | 2,311 | 244 | 148 | 286 | 922 |
| Other reasons | 1963 | 9,359 | 158 | 20 | 416 | 339 | 2,969 | 3,457 | 208 | 191 | 392 | 1,209 |
| | 1962 | 8,362 | 138 | 32 | 347 | 295 | 2,747 | 2,967 | 209 | 149 | 483 | 995 |

(1) Previously failed on initial claim but subsequently established on revised claim during July

| | | | | | | | | | | | |
|------|-------|----|----|----|----|-----|-----|----|----|----|-----|
| 1963 | 1,832 | 56 | 13 | 66 | 74 | 668 | 613 | 49 | 22 | 78 | 193 |
|------|-------|----|----|----|----|-----|-----|----|----|----|-----|

Table 6. - Estimates of the Number of Beneficiaries, by Province.

| Province | Average per week | |
|----------------------|--------------------|-------|
| | 1963 - July - 1962 | |
| | (in thousands) | |
| Canada - | 150.8 | 150.4 |
| Newfoundland | 3.3 | 4.6 |
| Prince Edward Island | 0.7 | 0.6 |
| Nova Scotia | 7.4 | 7.5 |
| New Brunswick | 6.3 | 6.4 |
| Quebec | 49.3 | 45.4 |
| Ontario | 51.6 | 50.7 |
| Manitoba | 6.0 | 6.6 |
| Saskatchewan | 3.2 | 3.8 |
| Alberta | 7.8 | 8.5 |
| British Columbia | 15.3 | 16.4 |

Table 7. - Benefit Payments, by Province.

| Prov. | 1963 - July - 1962 | | | |
|----------|--------------------|------------------------|---------|------------------------|
| | Weeks | Amount (in dollars) | Weeks | Amount (in dollars) |
| Canada - | 663,594 | 15,506,192 | 631,485 | 14,511,553 |
| Nfld. | 14,502 | 332,544 | 19,194 | 447,816 |
| P.E.I. | 2,905 | 57,386 | 2,453 | 48,482 |
| N.S. | 32,502 | 715,864 | 31,455 | 678,244 |
| N.B. | 27,907 | 618,135 | 26,817 | 587,079 |
| Que. | 216,808 | 5,130,618 | 190,496 | 4,408,043 |
| Ont. | 227,170 | 5,285,360 | 212,729 | 4,849,381 |
| Man. | 26,404 | 603,909 | 27,800 | 634,849 |
| Sask. | 13,875 | 306,581 | 15,856 | 346,184 |
| Alta. | 34,367 | 829,286 | 35,719 | 872,202 |
| B.C. | 67,154 | 1,626,509 | 68,966 | 1,639,273 |

Table 8. - Number of Weeks of Benefit, by Province.

| Province | Complete Weeks | Partial Weeks | |
|----------|----------------|---------------|------------------------|
| | | Total | Due to Excess Earnings |

July - 1963

| | | | |
|----------------------|---------|--------|--------|
| Canada - | 603,057 | 60,537 | 42,318 |
| Newfoundland | 12,906 | 1,596 | 1,428 |
| Prince Edward Island | 2,643 | 262 | 199 |
| Nova Scotia | 27,979 | 4,523 | 3,675 |
| New Brunswick | 24,356 | 3,551 | 2,725 |
| Quebec | 198,750 | 18,058 | 11,418 |
| Ontario | 207,405 | 19,765 | 13,270 |
| Manitoba | 23,863 | 2,541 | 1,932 |
| Saskatchewan | 12,619 | 1,256 | 891 |
| Alberta | 31,199 | 3,168 | 2,280 |
| British Columbia | 61,337 | 5,817 | 4,500 |

July - 1962

| | | | |
|----------------------|---------|--------|--------|
| Canada - | 572,080 | 59,405 | 41,894 |
| Newfoundland | 17,251 | 1,943 | 1,560 |
| Prince Edward Island | 2,240 | 213 | 164 |
| Nova Scotia | 26,972 | 4,483 | 3,654 |
| New Brunswick | 23,247 | 3,570 | 2,704 |
| Quebec | 173,490 | 17,006 | 10,760 |
| Ontario | 194,705 | 18,024 | 12,445 |
| Manitoba | 25,137 | 2,663 | 1,983 |
| Saskatchewan | 14,522 | 1,334 | 945 |
| Alberta | 32,351 | 3,368 | 2,445 |
| British Columbia | 62,165 | 6,801 | 5,234 |

Glossary of Terms

Insured population: For purposes of this report, the insured population is defined as the number of persons estimated as currently in contact with the Unemployment Insurance Commission either as contributors or as claimants. The estimates are revised once a year when data from the book renewal are available.

Employed population: The number of persons estimated as currently contributing under the scheme. Estimates are based on a 10 per cent sample and hence are subject to sampling variability.

Claimant population: The count of persons currently reporting to the local offices as at the end of the month. An exception occurs in the month which serves as a benchmark, i.e., May or June, when the claimant count represents the number of persons reporting to local offices as claimants during the first two weeks of book renewal.

Initial claim: An application for benefit from a person for whom there is no benefit period in existence. This category includes both regular and seasonal claims, since it is impossible to determine, at the time of filing a claim, the type of benefit for which the claimant will subsequently qualify. On an initial claim the contribution history for the two years preceding the claim is examined. This is required in order to test attachment to insured employment and thus determine the type of benefit for which the claimant is eligible, if at all. In cases of eligibility, the record of the qualifying period is used to calculate the weekly rate of benefit and maximum entitlement for the benefit period. Only one initial claim is required for each benefit period.

Benefit period: A period commencing with the week in which the initial claim is made, provided the qualifying conditions are fulfilled. The maximum length of the benefit period is 52 weeks, in the case of claimants qualifying under the regular terms of the Act. Seasonal benefit periods may be established only from December 1 to mid-May, with a maximum length of 24 weeks. In either case, however, the benefit period terminates with exhaustion of benefit.

Renewal claim: An application for benefit from an insured person during the currency of a benefit period. As in the case of initial claims, this category includes renewal claims from all classes of claimants, i.e., regular, seasonal and fishing.

Initial and renewal claims filed: An approximation of the number of new cases of recorded unemployment among insured persons during a period. However, an initial claim representing a request for re-establishment of a benefit period with no actual interruption in the period on claim would not constitute a new case of unemployment. To the extent that such claims are filed in any month, the total overstates the number of new cases.

Revised claims: Those, other than initial or renewal, which must be considered by an insurance officer, e.g., involving dependency, extension of qualifying period, etc. A revised claim is thus an administrative device to initiate action for reconsideration of an existing initial or renewal claim.

Claimants currently reporting to local offices: All persons currently reporting to local offices to claim unemployment insurance benefit, either regular, seasonal or fishing. Under the Unemployment Insurance Act a person may claim benefit for any week during which he did not work a full working week.

Number of weeks on claim: The cumulative number of weeks during which a claimant has reported to prove unemployment during the current period on claim. The count commences with the week in which the initial (or renewal) claim is filed and continues unbroken so long as the claimant continues to report as directed. Cases occur in which a spell of unemployment extends beyond the termination of a benefit period and a new benefit period is immediately established with no actual interruption of the period on claim. In such cases the cumulative number of weeks is transferred from the previous claim document to that covering the subsequent benefit period and the count continued. This procedure applies also for contiguous periods on regular and seasonal benefit. Excluded from the count are any weeks for which a claimant reported "non-availability" during a complete week.

Entitled to benefit: For purposes of this report, this category comprises those adjudications arising from initial claims on which a benefit period (regular, seasonal or fishing) is shown as established and no disqualification imposed and adjudications indicating "approval" on renewal claims, either regular, seasonal or fishing.

Not entitled to benefit: Claimants disqualified on initial and renewal claims, and those for whom the adjudication on an initial claim was to the effect that the claimant was ineligible to establish either a regular, seasonal or fishing benefit period.

Benefit period not established: The minimum contribution requirements for any type of benefit have not been met. This figure thus represents the net total of persons with insufficient contributions to establish a benefit period under either the regular, seasonal or fishing benefit provisions, based on decisions arising from initial claims only. Subsequent decisions arising from a revised claim and constituting a reversal of the initial adjudication are not taken into account, but such decisions would reduce the number of benefit periods not established.

Disqualification: A disqualification is imposed because of circumstances surrounding the claim which render the claimant ineligible for the receipt of benefit either for a stated period or so long as the condition causing the disqualification continues.

Where it is established that loss of employment was voluntary and without just cause on the part of the claimant, i.e., he left employment of his own volition or was dismissed because of misconduct, the maximum disqualification is six weeks; claimants participating in a labour dispute in which they are directly interested are disqualified for the duration of the work stoppage. In assessing the number of cases of disqualification, no distinction is made as to the type of claim, hence disqualifications arising from revised claims are included. The cases mentioned here serve as examples only and do not constitute a complete summary of conditions under which a disqualification may be imposed. Sections 59-66 of the Act contain a description of these conditions.

Weeks compensated: Calendar weeks in respect of which some benefit, either regular, seasonal or fishing, was paid. A compensated week is counted in the month in which the copy of the payment voucher is received in the District Treasury Office, which is not necessarily the month in which the week of unemployment occurred.

Amount of benefit: The sum of all benefit payments made during the month. This comprises regular, seasonal or fishing benefit.

Complete week: A week in respect of which a claimant received the full weekly rate of benefit authorized on that benefit period.

Partial week: A week for which a claimant received less than the full weekly rate authorized. A partial week may be due to excess earnings resulting in a reduced payment in direct proportion to the amount of such earnings. If a claimant was "not available for work" on any day or days during a week, a reduction will be made in the weekly rate proportionate to the number of days of "non-availability". A reduction will occur also if a portion of a week was designated as part of the prescribed waiting period.

Excess earnings: Earnings during a week in excess of the allowable earnings for a claimant's weekly benefit rate. As an example, a claimant whose weekly rate is \$30.00 may earn up to \$15.00 in a week without suffering a reduction in benefit; however, in a week where he earns \$17.00 his benefit will be reduced to \$28.00.

Beneficiaries: Persons who received one or more benefit payments. The estimate, based on the number of payment documents, represents the average weekly number of beneficiaries.

Seasonal benefit: Benefit payable during the period commencing with the Sunday prior to December 1 and ending with the Saturday after May 15, to certain classes of claimants unable to fulfil the requirements under the regular benefit provisions of the Act. Claimants in Class A must prove 15 contributions since the Saturday preceding the 31st day of March immediately prior to the date of claim, while qualification under class B is contingent upon a regular benefit period having terminated since the Saturday following the 15th day of May immediately prior to the claim.

Fishermen: For purposes of regular benefit, a fisherman is a claimant showing five or more fishing contribution weeks during the last 52 weeks. For purposes of seasonal benefit, however, any claimant whose qualifying contributions include even one fishing contribution week is classed as a fishing claimant.

Fishing contribution week: Any week for which a fishing contribution is recorded, whether or not a contribution was also made in respect of other insured employment. Specially designed stamps are used to record insured employment in fishing and employers using the bulk pay method must report employee's fishing contributions separately from those relating to other insurable employment.

Industrial Classification of persons filing new claims for Unemployment Insurance: This information is based on a sample of documents in respect of initial claims filed in local offices during a month. To ensure that all such claims have an equal chance of being included in the study, the documents are accumulated until the end of the third week following the month in which the claim was filed.

The sampling ratio varies from one hundred per cent in the Atlantic provinces (during the period of low claim) to five per cent in Ontario. The sample embraces all new initial claims without regard to benefit status, i.e. failures as well as disqualifications are included. However, it excludes initial claims classed as transitional, i.e., those taken on behalf of persons terminating one benefit period and seeking re-establishment of credits, since such claims are not new cases of separation from employment.

At the present time only the new separations requiring an **initial** claim are included in this study, as these are the only documents forwarded to the Bureau for analysis. The ratio of initial to renewal claims fluctuates with the claim load, so that during the months of heavy claim, it is approximately 3:1.



THE UNIVERSITY OF CHICAGO