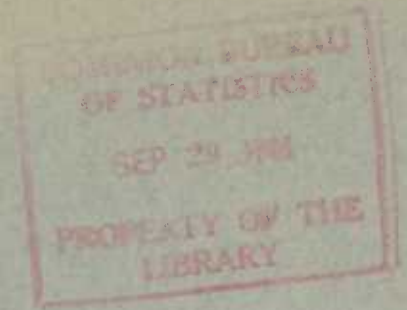


54-D-50
C3



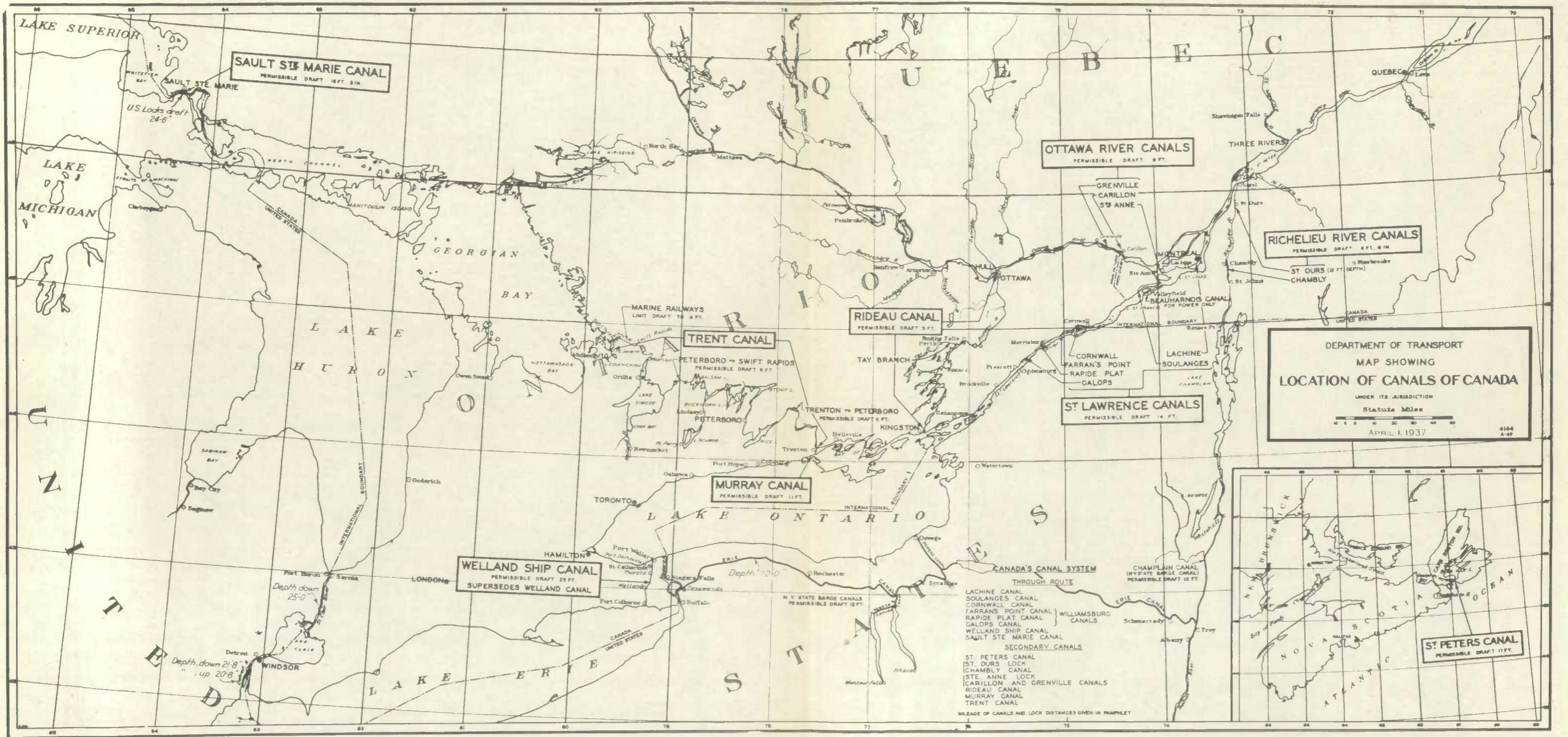
CANADA
DEPARTMENT OF TRADE AND COMMERCE
DOMINION BUREAU OF STATISTICS
TRANSPORTATION BRANCH

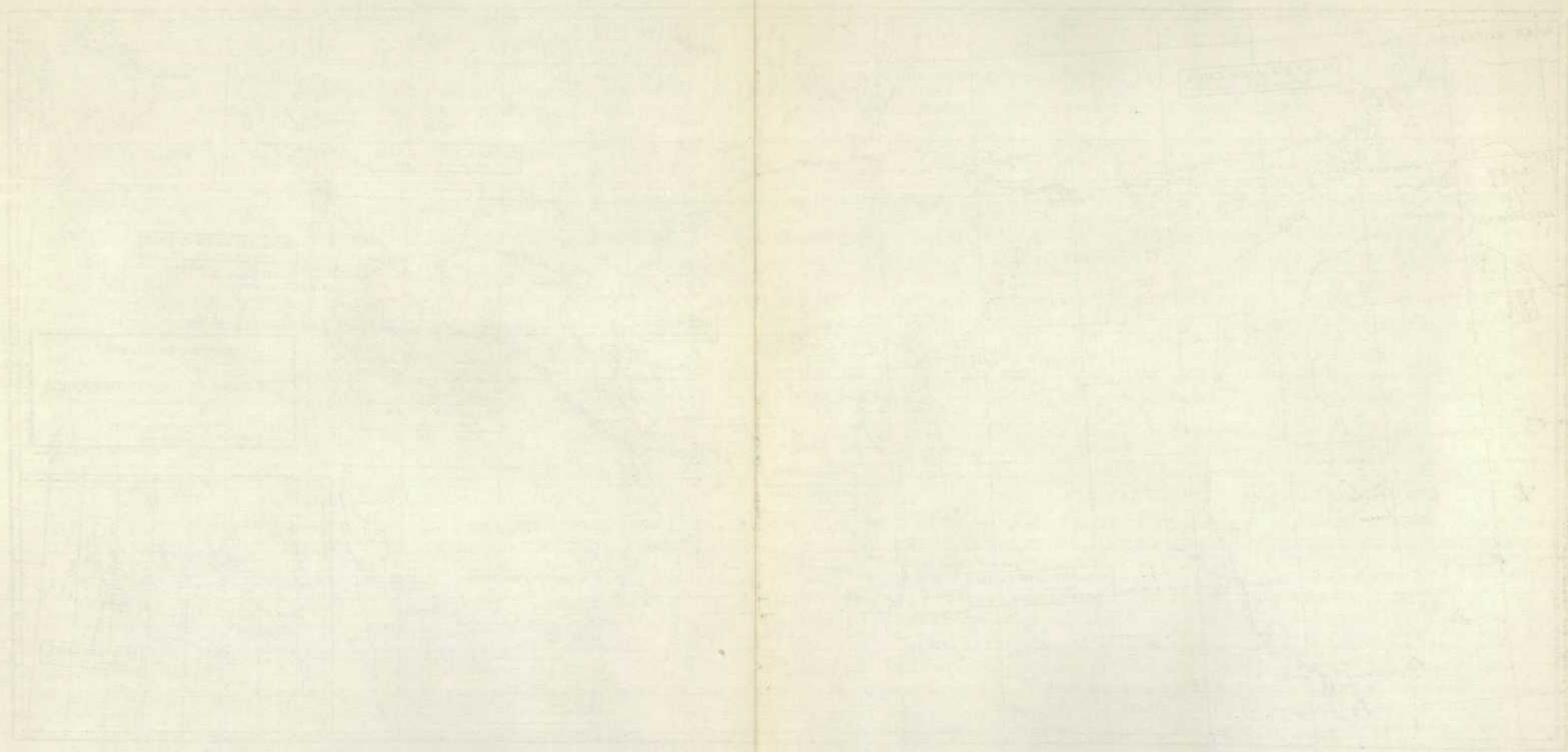
SUMMARY OF
CANAL STATISTICS
1848 - 1936

Published by Authority of the HON. W. D. EULER, M.P.,
Minister of Trade and Commerce.

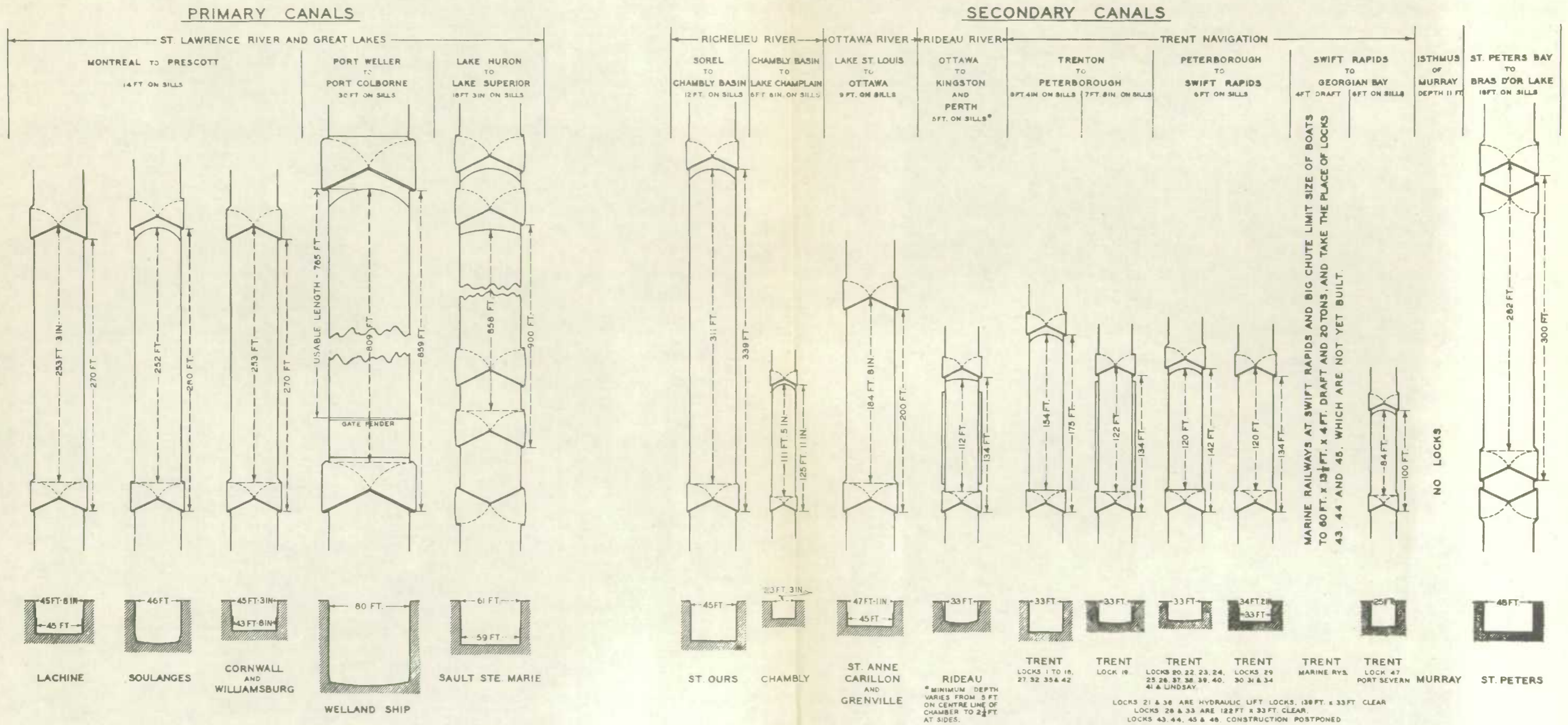
OTTAWA
1937

Price 10 cents





DEPARTMENT OF TRANSPORT
 PLANS AND SECTIONS SHOWING
 DIMENSIONS OF THE SMALLEST LOCK ON EACH OF THE CANADIAN CANAL SYSTEMS
 (EXCLUDING SUPERSEDED LOCKS)



SLIGHT SHIFTING OF MASONRY IN SOME LOCK WALLS HAS SOMEWHAT NARROWED THE CLEAR WIDTH OF LOCKS IN CERTAIN SPOTS. LOCK 17 ON THE CORNWALL CANAL IS THE MOST NOTABLE IN THIS RESPECT AND IS THE LIMITING LOCK OF THE ST. LAWRENCE SYSTEM.

DETAILED INFORMATION RESPECTING OVERHEAD CLEARANCES AND AVAILABLE WIDTHS AND DEPTHS OF CANAL CHANNELS WILL BE FOUND IN THE TEXT.

DOMINION BUREAU OF STATISTICS
TRANSPORTATION AND PUBLIC UTILITIES BRANCH
OTTAWA

Dominion Statistician, R.H. COATS, LL. D., F.R.S.C., F.S.S. (Hon.)

Chief, Transportation and Public Utilities Branch, G.S. Wrong, B.Sc.

SUMMARY OF CANAL STATISTICS

1848 - 1936

The following tables show the number of vessels with their registered net tonnage and tons (2,000 lbs.) of freight carried, as far back as the records are available, for each of the canals in Canada under the jurisdiction of the Dominion Government. The St. Andrew's lock (not shown on the accompanying map) on the Red river, 15 miles north of the city of Winnipeg, is controlled by the Department of Public Works and the other canals are under the jurisdiction of the Department of Transport (formerly under the Department of Railways and Canals). There are a few other locks on rivers not maintained and controlled by the Federal Government but they are relatively unimportant.

The data are for each canal and, consequently, when added include considerable duplication because of vessels and cargoes using two or more canals on a voyage and being counted at each canal used. The duplications for freight using two or all three of the St. Lawrence, Welland and Sault Ste. Marie canals (both Canadian and United States canals for the last) during 1936 amounted to approximately 7,733,000 tons. No analysis has been made for other years nor for the other canals to compute the amount of duplication in the data.

The main canals are on the St. Lawrence-Great Lakes system overcoming the falls on the St. Lawrence river between Montreal and Prescott, the Niagara Falls on the Niagara river and the falls on the St. Mary's river at Sault Ste. Marie. The difference in elevation of Lake Superior and the St. Lawrence river at Montreal is approximately 580 feet, and 555 feet of this is overcome by locks.

The permissible draught through the St. Lawrence canals is 14 feet, having been increased from an original minimum controlling draught of 4½ feet on the Lachine Canal, to a through minimum of 9 feet in 1848, and to its present draught in 1904. The first canal on this route, the Lachine, was completed in 1824 but records of traffic are available only since 1848.

The first Welland canal on the Niagara river was opened in 1829 and was improved in 1845 with a permissible draught of 9 feet. This was increased to 14 feet in 1887 and the new Welland Ship Canal was opened in 1931, allowing a draught of 13 feet 3 inches, and completed in 1932 to allow a draught of 25 feet; the locks have 30 feet of water over the sills. Traffic statistics for this canal are also available only from 1848.

The first lock at Sault Ste. Marie was constructed in 1798 with 9 feet of water on the sills. This was destroyed in 1814 and in 1855 a lock was constructed on the United States side of the river with 11½ feet of water. A second lock with 17 feet of water on the sills was constructed in 1881, the Canadian lock with 18½ feet of water on the sills was constructed in 1895, a new United States lock replaced the first lock in 1896 and the third and fourth locks with 24½ feet on the sills were constructed in 1914 and in 1919. The water levels in the channels govern the draught of vessels using these locks and for the largest locks, the third and fourth on the United States side of the river, the draught is 18 feet for upbound vessels and 24 feet for down-bound vessels.

The permissible draught for each canal is shown on the map, but draughts vary with the water levels in the lakes and rivers. During the low water period in 1935 the allowable draught through the St. Lawrence canals was reduced in October to 12 feet 3 inches, as against a normal of 14 feet, and the depth of water on the sills of the locks of the Ottawa river canals has ranged from 8.58 feet to 24.92 feet. For details of dimensions of individual locks see "The Canals of Canada" issued by the Department of Transport (1937 Edition).

For the years 1848 to 1856 the division of vessels was "British" and "foreign" and from 1857 on "Canadian" and "United States." British vessels have been included with Canadian and other foreign vessels with United States; only a relatively small number of other foreign vessels use the canals.

TRAFFIC ON CANADIAN CANALS

Year [†]	CANADIAN VESSELS		UNITED STATES VESSELS		FREIGHT CARRIED				Total Tons
	Number	Registered Tonnage	Number	Registered Tonnage	Originating in Canada		Originating in the United States		
					Tons	Per Cent of Total	Tons	Per Cent of Total	
1848	-	-	-	-	-	-	-	-	490,713
1849	-	-	-	-	-	-	-	-	641,965
1850	-	-	-	-	-	-	-	-	911,569
1851	15,454	1,430,172	3,420	543,669	-	-	-	-	1,416,795
1852	16,062	1,522,400	4,592	764,591	-	-	-	-	1,497,614
1853	16,734	1,402,342	3,672	736,312	-	-	-	-	1,805,719
1854	16,678	1,489,223	3,160	613,400	-	-	-	-	1,687,304
1855	17,447	1,765,175	3,462	592,839	-	-	-	-	1,714,642
1856	17,252	1,850,318	4,196	822,768	-	-	-	-	2,007,263
1857	15,866	1,512,970	4,417	802,924	-	-	-	-	1,847,007
1858	16,314	1,536,875	4,322	865,265	-	-	-	-	2,025,254
1859	22,809	1,828,383	3,657	626,638	-	-	-	-	2,447,794
1860	24,412	2,065,880	5,090	964,850	-	-	-	-	2,583,701
1861	25,590	2,335,681	4,681	972,230	-	-	-	-	2,614,892
1862	27,757	2,536,586	5,085	1,045,810	-	-	-	-	3,113,722
1863	30,813	2,670,177	4,798	903,736	-	-	-	-	3,052,275
1864 [†]	9,225	838,087	1,433	278,463	-	-	-	-	858,376
1865	31,056	2,767,681	4,130	653,154	-	-	-	-	2,537,896
1866	33,047	2,917,692	4,689	674,337	-	-	-	-	2,955,386
1867	35,630	3,213,206	4,086	630,566	-	-	-	-	3,235,754
1868	37,193	3,365,190	4,804	820,820	-	-	-	-	3,598,815
1869	36,272	3,370,013	4,577	837,695	-	-	-	-	3,612,629
1870	39,553	3,777,945	5,972	974,577	-	-	-	-	4,327,600
1871	36,665	3,555,046	6,117	1,103,181	-	-	-	-	4,281,635
1872-a	24,320	2,729,047	5,757	992,317	-	-	-	-	3,387,648
1872-b	24,040	2,846,598	6,413	957,949	-	-	-	-	3,633,491
1873	25,558	2,931,089	6,596	1,013,648	-	-	-	-	3,672,183
1874	23,976	2,842,874	7,399	1,108,608	-	-	-	-	3,577,558
1875	21,071	2,582,631	6,237	775,135	-	-	-	-	2,992,321

1876	21,321	2,645,034	5,842	876,199	-	-	-	-	3,039,972
1877	20,857	3,296,762	5,669	897,114	-	-	-	-	2,944,257
1878	19,094	3,361,057	4,659	684,299	-	-	-	-	2,594,728
1879	20,607	3,434,351	3,933	512,607	-	-	-	-	2,690,737
1880	21,387	3,783,395	4,387	493,325	-	-	-	-	2,961,281
1881	23,018	3,721,217	4,067	486,881	-	-	-	-	2,853,230
1882	22,160	3,470,967	4,593	585,308	-	-	-	-	2,999,700
1883	20,358	3,318,026	4,532	688,952	-	-	-	-	3,035,442
1884	17,642	2,775,924	4,080	618,004	-	-	-	-	2,622,213
1885	17,312	2,681,639	3,795	547,438	-	-	-	-	2,673,641
1886	19,814	2,945,613	4,147	667,953	-	-	-	-	2,969,103
1887	18,991	2,847,952	3,883	566,680	-	-	-	-	2,720,516
1888	17,661	2,640,322	3,921	631,777	-	-	-	-	2,761,597
1889	19,393	2,995,582	4,542	830,648	-	-	-	-	3,113,896
1890	20,655	3,139,472	3,364	721,397	-	-	-	-	2,913,047
1891	19,246	3,135,454	3,602	838,116	-	-	-	-	2,902,526
1892	21,177	3,401,965	3,928	871,795	-	-	-	-	3,031,736
1893	20,757	3,434,054	4,585	1,286,295	-	-	-	-	3,546,989
1894	19,027	3,048,904	4,131	1,012,027	-	-	-	-	2,942,715
1895	17,136	2,983,059	4,427	886,679	-	-	-	-	2,740,241
1896	20,972	3,449,706	4,650	1,228,120	-	-	-	-	7,991,073
1897	21,466	3,640,737	4,675	1,310,403	-	-	-	-	8,560,967
1898	21,509	3,797,985	4,264	1,270,764	-	-	-	-	6,618,475
1899	23,579	4,308,571	6,101	3,285,733	-	-	-	-	6,225,924
1900	21,755	4,129,250	5,502	2,408,985	-	-	-	-	5,013,693
1901	20,860	3,980,264	5,634	2,482,274	-	-	-	-	5,665,259
1902	22,198	4,485,695	6,433	4,086,439	-	-	-	-	7,513,197
1903	23,767	5,212,832	6,695	4,236,475	-	-	-	-	9,203,817
1904	21,851	4,772,100	6,253	3,655,905	-	-	-	-	8,256,236
1905	23,726	5,191,191	7,085	5,096,241	-	-	-	-	9,371,744

* Data for 1864 are for the six months ended June 30, data for the years 1865 to 1872-a are for the fiscal years ended June 30 and all remaining data are for the calendar years ended December 31.

TRAFFIC ON CANADIAN CANALS - Cont'd.

Year †	CANADIAN VESSELS		UNITED STATES VESSELS		FREIGHT CARRIED				
	Number	Registered Tonnage	Number	Registered Tonnage	Originating in Canada		Originating in the United States		Total Tons
					Tons	Per Cent of Total	Tons	Per Cent of Total	
1906	25,498	5,526,321	7,319	5,685,315	-	-	-	-	10,523,185
1907	28,833	6,328,911	9,328	11,604,834	-	-	-	-	20,543,639
1908	29,040	6,780,789	7,489	8,521,139	5,012,147	28.7	12,190,673	71.3	17,502,820
1909	22,507	7,811,578	9,996	16,459,322	7,001,621	20.8	26,719,127	79.2	33,720,748
1910	25,337	8,931,790	11,462	21,777,297	7,439,368	17.3	35,551,240	82.7	42,990,608
1911	25,585	9,172,192	10,370	18,231,622	7,792,907	20.5	30,237,446	79.5	38,030,353
1912	27,371	10,237,335	11,785	24,636,190	9,376,529	19.7	38,210,716	80.3	47,587,245
1913	28,654	12,078,041	10,739	24,238,788	11,130,875	21.3	40,923,038	78.7	52,053,913
1914	26,125	12,050,856	7,742	15,636,414	9,382,206	25.3	27,641,031	74.7	37,023,237
1915	21,575	9,398,207	6,415	7,385,101	6,789,423	44.7	8,409,380	55.3	15,198,803
1916	23,002	9,839,029	6,800	10,660,839	7,486,962	31.7	16,096,529	68.3	23,583,491
1917	21,588	9,831,694	6,594	10,259,772	5,964,369	26.8	16,274,566	73.2	22,238,935
1918	18,909	7,800,972	6,791	9,616,200	3,369,477	17.8	15,514,142	82.2	18,883,619
1919	20,682	8,735,973	4,092	5,259,173	4,865,831	48.7	5,129,435	51.3	9,995,266
1920	23,038	8,521,643	3,826	3,838,890	4,094,044	46.9	4,641,339	53.1	8,735,383
1921	25,720	10,079,388	2,969	2,330,178	4,562,028	48.5	4,844,993	51.5	9,407,021
1922	26,217	11,059,261	3,735	3,165,054	6,273,227	62.1	3,752,828	37.9	10,026,055
1923	27,112	13,013,970	3,399	3,325,809	7,637,485	68.2	3,561,949	31.8	11,199,434
1924	27,467	13,988,909	3,233	2,821,177	8,857,177	68.8	4,011,920	31.2	12,869,097
1925	28,361	14,964,785	3,587	3,824,924	9,570,311	67.7	4,560,356	32.2	14,130,667
1926	27,965	14,542,485	3,543	3,144,866	9,656,190	71.7	3,821,473	28.3	13,477,663
1927	36,162	17,472,601	4,013	3,364,461	11,863,931	67.84	5,624,380	32.16	17,488,311
1928	30,575	17,435,176	3,973	3,270,591	13,882,592	74.16	4,837,849	25.84	18,720,441
1929	25,917	13,741,071	2,400	2,323,350	9,689,718	70.70	4,009,929	29.30	13,699,647
1930	24,100	14,489,045	2,063	1,684,576	10,955,113	74.00	3,848,221	26.00	14,803,334
1931	25,830	15,869,553	1,821	1,749,231	11,433,737	70.63	4,755,337	29.37	16,189,074
1932	19,854	15,255,970	2,061	2,681,078	13,242,773	73.73	4,717,877	26.27	17,960,650
1933	21,364	15,225,022	2,200	3,045,876	12,724,925	67.76	6,055,564	32.24	18,780,489
1934	22,217	14,766,837	2,044	2,969,981	10,768,500	59.60	7,300,752	40.40	18,069,252
1935	23,822	15,290,797	2,035	2,578,091	11,187,082	61.45	7,018,907	38.55	18,205,989
1936	25,251	17,085,749	2,708	3,208,829	13,465,460	62.72	8,003,356	37.28	21,468,816

Note: Origin of cargo not shown prior to 1908.

TOTAL TRAFFIC THROUGH SAULT STE. MARIE CANALS
(Canadian and United States Locks)

Year †	V e s s e l s		F r e i g h t		
	Number	Tonnage	Tons	Canadian Freight through Canals	Percentage through Canadian Lock
1855	193	106,296	14,503	-	-
1856	290	101,458	33,817	-	-
1857	376	180,820	51,607	-	-
1858	406	219,819	57,002	-	-
1859	669	352,642	122,056	-	-
1860	916	403,657	153,721	-	-
1861	538	276,639	87,847	-	-
1862	838	359,612	161,675	-	-
1863	1,257	507,434	236,780	-	-
1864	1,411	571,438	284,350	-	-
1865	997	409,062	181,638	-	-
1866	1,008	458,530	239,457	-	-
1867	1,305	556,899	325,357	-	-
1868	1,155	432,563	299,175	-	-
1869	1,338	524,885	368,326	-	-
1870	1,828	690,826	539,883	-	-
1871	1,637	752,101	585,583	-	-

† Calendar year.

TOTAL TRAFFIC THROUGH CANADIAN AND UNITED STATES LOCKS AT SAULT STE. MARIE
(Continued)

Year †	Vessels		Freight		
	Number	Tonnage	Tons	Canadian Freight through Canals Tons	Percentage through Canadian Lock
1872	2,004	914,735	746,258	-	-
1873	2,517	1,204,446	888,432	-	-
1874	1,734	1,070,857	655,138	-	-
1875	2,033	1,259,534	833,465	-	-
1876	2,417	1,541,676	1,073,570	-	-
1877	2,451	1,439,216	912,639	-	-
1878	2,567	1,667,136	937,351	-	-
1879	3,121	1,677,071	1,050,784	-	-
1880	3,503	1,734,890	1,321,906	-	-
1881	4,004	2,092,757	1,567,741	-	-
1882	4,774	2,468,088	2,029,521	-	-
1883	4,315	2,042,259	2,267,105	-	-
1884	5,689	2,997,837	2,874,557	-	-
1885	5,380	3,035,937	3,256,628	-	-
1886	7,424	4,219,397	4,527,759	-	-
1887	9,355	4,897,598	5,494,649	-	-
1888	7,803	5,130,659	6,411,423	-	-
1889	9,579	7,221,935	7,516,022	-	-
1890	10,557	8,454,435	9,041,213	-	-
1891	10,191	8,400,685	8,888,759	-	-
1892	12,580	10,647,203	11,214,333	-	-
1893	12,008	8,949,754	10,796,572	-	-
1894	14,491	13,110,366	13,195,860	-	-
1895	17,956	16,806,781	15,062,580	-	4
1896	18,615	17,249,418	16,239,061	-	28
1897	17,171	17,619,933	18,982,755	-	26
1898	17,761	18,622,754	21,234,664	-	14
1899	20,255	21,958,347	25,255,810	-	12
1900	19,452	22,315,834	25,643,073	-	8
1901	20,041	24,626,976	28,403,065	-	10
1902	22,659	31,955,582	35,961,146	-	13
1903	18,596	27,736,444	34,674,437	-	16
1904	16,120	24,364,138	31,546,106	-	16
1905	21,679	36,617,699	44,270,680	-	12

1906	22,155	41,098,324	51,751,080	-	13
1907	20,437	44,087,974	58,217,214	-	27
1908	15,181	31,091,730	41,390,557	2,774,029	31
1909	19,204	46,751,717	57,895,149	3,283,319	48
1910	20,899	49,856,123	62,363,218	3,320,865	58
1911	18,673	41,653,488	53,477,216	3,732,982	58
1912	22,778	56,736,807	72,472,676	5,322,713	55
1913	23,795	57,989,715	79,718,344	7,239,993	54
1914	18,717	41,986,339	55,369,934	4,810,494	50
1915	21,233	56,399,147	71,290,304	6,830,819	11
1916	25,407	69,824,463	91,888,219	8,256,881	18
1917	22,885	65,307,233	89,813,898	6,950,219	17
1918	20,610	61,100,244	85,680,327	3,116,727	15
1919	17,587	50,092,721	68,235,668	4,326,168	6
1920	18,848	58,196,498	79,279,630	4,599,964	3
1921	12,824	32,187,795	48,254,116	6,753,413	4
1922	17,378	52,598,749	66,064,883	8,960,748	3
1923	21,974	68,547,016	91,376,831	9,526,721	3
1924	17,867	57,291,961	72,034,854	8,741,539	2
1925	20,651	69,237,687	81,871,699	9,816,158	2
1926	20,898	71,280,829	85,681,615	9,545,455	2
1927	18,759	64,327,825	83,353,040	9,432,758	2
1928	19,286	66,838,186	86,992,254	12,582,733	2
1929	19,794	68,240,279	92,616,898	7,104,426	3
1930	16,820	54,830,314	72,897,895	7,333,331	2
1931	13,056	35,917,607	44,606,325	6,689,133	4
1932	8,679	17,252,225	20,484,169	7,168,163	11
1933	12,100	34,372,333	40,303,398	6,912,584	6
1934	11,395	35,796,335	42,247,556	6,213,565	4
1935	12,959	41,567,383	48,292,973	6,796,371	4
1936	16,614	55,770,089	69,529,132	6,791,448	3

† Calendar year.

NOTES:

	Opened for Traffic	Allowable Draught
First Canadian lock	1798	9 feet (Destroyed 1814)
Present Canadian lock	Sept. 9, 1895	18.2 "
First United States lock	1855	
Present Weitzel lock (U.S. Canal)	Sept. 1, 1881	12.6 "
" Pos lock (U.S. Canal)	Aug. 3, 1896	18 "
The Third lock (U.S. Canal)	Oct. 21, 1914	24 "
The Fourth lock (U.S. Canal)	Sept. 18, 1919	24 "

TRAFFIC THROUGH SAULT STE. MARIE CANAL - CANADIAN LOCK

Year	CANADIAN VESSELS		UNITED STATES VESSELS		Total Number	Vessel Tonnage	FREIGHT TONS					Lockages Number	Days Open
	Number	Tonnage	Number	Tonnage			Canadian	Percent-age	United States	Percent-age	Total		
1895	609	126,534	583	623,092	1,192	749,626	-	-	-	-	595,837	699	876
1896	2,070	589,407	3,066	3,805,749	5,136	4,395,156	-	-	-	-	4,577,399	3,042	218
1897	1,909	405,546	2,359	3,391,936	4,268	3,797,482	-	-	-	-	4,947,065	2,604	238
1898	1,811	403,931	1,864	2,353,699	3,675	2,757,630	-	-	-	-	3,055,387	2,520	243
1899	2,000	558,552	1,769	2,389,457	3,769	2,948,009	-	-	-	-	3,006,664	2,610	239
1900	1,790	577,310	1,291	1,617,438	3,081	2,194,748	-	-	-	-	2,035,677	2,205	238
1901	2,796	775,151	1,408	1,674,597	4,204	2,449,748	-	-	-	-	2,820,394	2,910	246
1902	3,080	1,366,930	1,964	3,237,372	5,044	4,604,302	-	-	-	-	4,729,268	3,418	264
1903	2,711	1,615,939	1,640	3,146,807	4,351	4,762,746	-	-	-	-	5,511,868	3,242	256
1904	2,637	1,555,042	1,325	2,675,663	3,962	4,230,705	-	-	-	-	5,030,705	3,022	241
1905	3,970	1,803,288	1,692	2,734,349	5,662	5,537,637	-	-	-	-	5,473,406	4,031	255
1906	3,922	1,959,252	1,758	4,399,872	5,680	6,359,124	-	-	-	-	6,574,039	4,152	253
1907	3,217	2,154,688	3,132	9,961,281	6,349	12,115,969	-	-	-	-	15,588,165	4,596	238
1908	3,289	2,603,232	2,004	7,035,655	5,293	9,638,887	2,092,231	16.39	10,666,985	83.61	12,759,216	3,667	235
1909	2,597	2,988,936	3,734	14,850,738	6,331	17,839,674	2,990,059	10.73	24,871,186	89.27	27,861,245	5,046	240
1910	2,744	3,173,494	5,228	20,187,704	7,972	23,361,198	3,378,268	9.28	33,017,419	90.72	36,395,687	6,110	248
1911	2,713	3,108,880	4,068	16,252,340	6,781	19,361,220	3,177,581	10.27	27,774,128	89.73	30,951,709	6,802	236
1912	2,643	3,296,229	5,213	22,536,015	7,856	25,832,244	4,090,362	10.31	35,579,293	89.69	39,669,655	6,200	240
1913	3,279	3,793,434	5,006	22,181,007	8,285	25,974,441	4,954,734	11.60	37,744,590	88.40	42,699,324	6,266	246
1914	3,011	3,473,292	2,966	13,827,870	5,977	17,301,162	3,609,747	13.08	23,989,437	86.92	27,599,184	4,712	239
1915	3,000	3,041,003	1,331	5,443,812	4,331	8,484,815	2,561,734	33.05	5,189,223	66.95	7,750,957	4,374	248
1916	4,595	4,089,937	2,094	8,703,187	6,689	12,793,124	4,155,911	24.72	12,657,738	75.28	16,813,649	4,777	245
1917	3,199	3,182,960	2,138	8,712,604	5,337	11,895,564	2,875,590	18.62	12,571,502	81.38	15,447,092	4,142	237
1918	3,067	2,436,500	1,992	7,594,042	5,059	10,030,542	1,336,861	10.35	11,576,850	89.65	12,913,711	4,034	241
1919	3,140	2,817,096	929	3,671,634	4,069	6,488,730	1,606,311	38.82	2,531,774	61.18	4,138,085	3,174	247
1920	3,239	2,415,775	771	2,725,431	4,010	5,141,206	1,286,251	51.91	1,191,567	48.09	2,477,818	3,076	244

TRAFFIC ON THE WELLAND CANAL

Year †	CANADIAN VESSELS		UNITED STATES VESSELS		Total Number	Total Vessel Tonnage	FREIGHT CARRIED				
	Number	Tonnage	Number	Tonnage			Originating in Canada		Originating in the United States		Total Tons
					Tons	Per Cent of Total	Tons	Per Cent of Total			
1848	-	-	-	-	3,280	372,854	-	-	-	-	307,611
1849	-	-	-	-	2,278	468,410	-	-	-	-	351,596
1850	-	-	-	-	4,761	587,100	-	-	-	-	399,600
1851	3,357	363,221	2,336	409,402	5,693	772,623	-	-	-	-	691,627
1852	3,069	321,528	3,386	572,617	6,455	894,145	-	-	-	-	743,060
1853	3,660	380,277	3,054	683,337	6,714	1,063,614	-	-	-	-	905,516
1854	3,381	384,507	2,482	563,231	5,863	947,738	-	-	-	-	767,210
1855	4,280	505,072	2,499	546,395	6,779	1,051,467	-	-	-	-	849,333
1856	3,931	452,655	2,835	726,591	6,766	1,179,246	-	-	-	-	976,556
1857	3,044	418,984	3,195	729,450	6,239	1,148,434	-	-	-	-	901,072
1858	2,528	360,894	3,172	787,877	5,700	1,148,771	-	-	-	-	855,112
1859	2,185	318,169	2,344	538,749	4,529	856,918	-	-	-	-	709,611
1860	2,804	381,059	3,534	857,450	7,338	1,238,509	-	-	-	-	944,084
1861	3,116	436,493	3,592	891,179	6,708	1,327,672	-	-	-	-	1,020,483
1862	3,355	511,355	3,924	965,487	7,279	1,476,842	-	-	-	-	1,243,774
1863	3,425	521,818	3,474	808,289	6,899	1,330,107	-	-	-	-	1,141,120
1864 †	1,246	198,282	1,023	247,824	2,269	446,106	-	-	-	-	336,638
1865	3,841	593,561	2,506	542,245	6,347	1,135,806	-	-	-	-	885,876
1866	3,670	554,636	2,479	522,678	6,149	1,077,314	-	-	-	-	1,001,517
1867	3,093	492,839	2,212	501,099	5,305	993,938	-	-	-	-	933,260
1868	3,225	548,197	2,932	692,169	6,157	1,240,366	-	-	-	-	1,178,213
1869	3,278	548,019	2,791	719,432	6,069	1,267,451	-	-	-	-	1,237,012
1870	3,856	591,574	2,884	765,543	6,740	1,357,117	-	-	-	-	1,319,290
1871	4,270	625,788	3,459	928,330	7,729	1,554,118	-	-	-	-	1,485,640
1872-a	2,917	565,207	3,055	812,608	5,972	1,377,815	-	-	-	-	1,319,996
1872	3,359	634,387	2,704	707,989	6,063	1,342,376	-	-	-	-	1,333,104
1873	3,813	762,312	2,607	747,736	6,425	1,510,048	-	-	-	-	1,506,484
1874	3,196	682,865	2,618	758,871	5,814	1,441,736	-	-	-	-	1,389,173
1875	2,682	580,935	1,590	428,281	4,270	1,009,216	-	-	-	-	1,038,050

1876	2,758	572,488	2,031	566,717	4,789	1,139,205	-	-	-	-	1,099,810
1877	3,156	754,711	1,973	589,093	5,129	1,343,804	-	-	-	-	1,175,398
1878	2,623	647,086	1,806	440,411	4,429	1,087,497	-	-	-	-	968,758
1879	2,995	653,108	965	252,751	3,960	905,859	-	-	-	-	865,664
1880	3,332	704,037	772	178,239	4,104	882,276	-	-	-	-	819,934
1881	2,670	567,846	662	171,773	3,332	739,619	-	-	-	-	686,506
1882	2,450	491,803	884	230,268	3,334	722,071	-	-	-	-	790,643
1883	2,136	498,572	1,131	382,385	3,267	880,957	-	-	-	-	1,005,156
1884	2,219	403,555	919	337,774	3,138	741,329	-	-	-	-	837,811
1885	1,853	394,336	880	287,611	2,733	681,947	-	-	-	-	784,928
1886	2,542	546,140	1,047	393,588	3,589	939,728	-	-	-	-	980,135
1887	2,131	504,268	654	283,039	2,785	787,307	-	-	-	-	777,918
1888	1,895	477,953	752	350,318	2,647	828,271	-	-	-	-	878,800
1889	1,961	565,946	1,014	526,000	2,975	1,091,946	-	-	-	-	1,085,273
1890	2,135	615,821	748	506,648	2,883	1,122,469	-	-	-	-	1,016,165
1891	1,788	527,892	806	582,264	2,594	1,110,156	-	-	-	-	975,013
1892	1,818	592,078	797	600,223	2,615	1,192,301	-	-	-	-	955,554
1893	1,468	493,595	1,375	994,148	2,843	1,487,743	-	-	-	-	1,294,823
1894	1,473	564,035	939	688,910	2,412	1,252,945	-	-	-	-	1,008,221
1895	1,513	518,627	709	549,746	2,222	1,068,373	-	-	-	-	869,595
1896	1,676	593,341	1,090	860,106	2,766	1,453,447	-	-	-	-	1,279,987
1897	1,588	589,127	1,137	943,134	2,725	1,532,261	-	-	-	-	1,274,292
1898	1,325	518,578	1,059	894,309	2,384	1,412,887	-	-	-	-	1,140,077
1899	1,679	559,300	523	501,373	2,202	1,060,673	-	-	-	-	789,770
1900	1,765	575,381	634	437,431	2,399	1,012,812	-	-	-	-	719,360
1901	1,101	413,597	446	391,983	1,547	805,580	-	-	-	-	620,209
1902	1,011	393,357	557	432,366	1,568	825,723	-	-	-	-	665,387
1903	955	465,296	832	571,700	1,787	1,036,996	-	-	-	-	1,002,919
1904	799	435,049	634	416,964	1,433	852,013	-	-	-	-	811,371
1905	768	479,389	827	622,106	1,595	1,101,495	-	-	-	-	1,092,050
1906	866	602,876	670	647,152	1,536	1,250,028	-	-	-	-	1,201,967
1907	1,127	753,713	855	830,000	1,982	1,583,713	-	-	-	-	1,614,132
1908	1,531	992,237	820	670,934	2,351	1,663,171	-	-	-	-	1,703,453
1909	1,724	1,185,974	709	677,884	2,433	1,863,858	776,245	45.57	927,208	54.43	2,025,951
1910	1,852	1,461,499	692	687,018	2,544	2,148,517	1,050,241	51.84	975,710	48.16	2,326,290
							1,196,946	51.45	1,129,344	48.55	

+ Data for 1864 are for the six months ended June 30, data for the years 1865 to 1872-a are for the fiscal years ended June 30 and the remaining data are for the calendar years ended December 31.

TRAFFIC ON THE WELLAND CANAL - Cont'd.

Year	CANADIAN VESSELS		UNITED STATES VESSELS		Total Number	Total Vessel Tonnage	FREIGHT CARRIED				
	Number	Tonnage	Number	Tonnage			Originating in Canada		Originating in the United States		Total Tons
							Tons	Per Cent of Total	Tons	Per Cent of Total	
1911	1,664	1,541,548	816	755,631	2,480	2,297,179	1,296,480	51.09	1,241,149	48.91	2,537,629
1912	1,946	1,814,965	959	864,535	2,905	2,679,500	1,553,116	54.46	1,298,799	45.54	2,851,915
1913	2,411	2,376,778	818	787,752	3,229	3,164,530	2,093,406	58.63	1,477,308	41.37	3,570,714
1914	2,902	2,878,483	790	757,212	3,692	3,635,695	2,013,619	52.15	1,847,350	47.85	3,860,969
1915	2,126	2,032,348	796	822,847	2,922	2,855,195	1,426,256	46.59	1,634,756	53.41	3,061,012
1916	2,092	1,794,722	847	718,897	2,939	2,513,619	1,054,480	41.43	1,490,484	58.57	2,544,964
1917	2,554	2,284,873	697	491,388	3,251	2,776,261	981,914	39.43	1,508,628	60.57	2,490,542
1918	2,088	1,760,301	1,104	835,088	3,192	2,595,389	495,607	22.79	1,678,691	77.21	2,174,298
1919	2,344	1,924,419	869	691,595	3,213	2,616,014	1,079,087	49.71	1,091,692	50.29	2,170,779
1920	2,430	2,013,817	694	514,439	3,124	2,528,256	717,452	31.52	1,558,620	68.48	2,276,072
1921	3,038	2,761,228	732	568,143	3,770	3,329,371	1,036,410	33.69	2,040,012	66.31	3,076,422
1922	3,088	2,867,768	813	677,967	3,901	3,545,735	1,802,605	53.15	1,588,814	46.85	3,391,419
1923	4,149	3,429,604	613	422,579	4,762	3,852,183	2,332,309	62.10	1,423,603	37.90	3,755,912
1924	4,654	4,359,552	707	856,959	5,361	5,016,511	3,148,417	62.51	1,888,995	37.49	5,037,412
1925	5,014	4,732,951	852	834,185	5,866	5,567,136	3,387,065	60.05	2,253,233	39.95	5,640,298
1926	4,741	4,740,398	787	712,648	5,528	5,053,046	3,457,876	66.31	1,756,638	33.69	5,214,514
1927	6,504	5,811,180	1,150	1,039,417	7,654	6,850,597	4,448,524	61.38	2,798,935	38.62	7,247,459
1928	5,365	5,598,493	1,222	1,051,464	6,587	6,649,957	5,178,605	69.61	2,261,012	30.39	7,439,617
1929	3,842	3,835,740	551	450,910	4,393	4,286,650	2,935,213	61.54	1,834,653	38.46	4,769,866
1930	4,623	5,028,583	629	545,984	5,252	5,574,567	3,917,884	64.36	2,170,026	35.64	6,087,910
1931	4,942	6,076,320	868	942,973	5,810	7,019,293	3,947,133	54.26	3,326,753	45.74	7,273,386
1932	4,473	6,076,197	1,239	2,150,688	5,712	8,226,885	5,055,515	59.22	3,481,945	40.78	8,537,460
1933	4,124	6,294,483	1,289	2,171,530	5,413	8,466,013	4,832,348	52.56	4,361,782	47.44	9,194,130
1934	3,854	6,216,866	1,296	2,407,577	5,150	8,624,443	3,925,659	42.30	5,354,793	57.70	9,280,452
1935	3,931	6,310,820	1,161	1,896,732	5,092	8,207,552	4,041,830	45.14	4,911,553	54.86	8,953,383
1936	5,050	7,091,034	1,348	2,036,195	6,398	9,127,229	4,840,621	46.38	5,596,182	53.62	10,436,803

NOTES:

Vessels using lock at Port Dalhousie not included in traffic on new Welland Ship Canal, 1932 to 1936.

Welland Canal	Opened for traffic	Enlarged	Allowable Draught
	1829	8 feet
	1845	9 "
	1883	12 "
	1887	14 "
	1931	18 "
	1932	25 "

TRAFFIC ON THE ST. LAWRENCE CANALS

Year †	CANADIAN VESSELS		UNITED STATES VESSELS		Total Number	Total Vessel Tonnage	FREIGHT CARRIED				
	Number	Tonnage	Number	Tonnage			Originating in Canada		Originating in the United States		Total Tons
							Tons	Per Cent of Total	Tons	Per Cent of Total	
1848	-	-	-	-	5,648	476,875	-	-	-	-	164,267
1849	-	-	-	-	5,448	444,640	-	-	-	-	213,153
1850	-	-	-	-	6,169	460,180	-	-	-	-	288,103
1851	6,656	505,197	278	21,013	6,934	526,210	-	-	-	-	450,400
1852	7,463	637,364	120	6,095	7,583	643,459	-	-	-	-	492,575
1853	7,630	604,673	175	14,726	7,805	619,399	-	-	-	-	561,601
1854	8,542	718,354	198	18,770	8,740	737,124	-	-	-	-	639,000
1855	7,662	638,998	237	16,506	7,889	655,504	-	-	-	-	541,254
1856	7,886	696,520	420	18,521	8,306	715,041	-	-	-	-	634,536
1857	7,525	664,844	347	25,187	7,872	690,031	-	-	-	-	593,652
1858	8,287	725,842	334	31,968	8,621	757,810	-	-	-	-	605,558
1859	8,797	741,157	227	24,479	9,024	765,636	-	-	-	-	911,768
1860	8,728	794,060	380	30,405	9,108	824,465	-	-	-	-	733,596
1861	10,799	989,366	243	20,103	11,042	1,009,469	-	-	-	-	886,908
1862	10,704	1,028,633	300	20,597	11,004	1,049,230	-	-	-	-	964,394
1863	10,987	1,018,163	258	18,146	11,245	1,036,309	-	-	-	-	895,133
1864 †	3,045	283,521	136	7,992	3,181	291,513	-	-	-	-	231,747
1865	10,200	966,242	489	28,322	10,689	994,564	-	-	-	-	750,820
1866	10,654	1,008,527	645	38,967	11,299	1,047,494	-	-	-	-	817,929
1867	11,418	1,098,543	414	24,373	11,832	1,122,916	-	-	-	-	906,299
1868	12,153	1,158,649	356	17,817	12,509	1,176,466	-	-	-	-	932,066
1869	11,998	1,159,179	350	15,471	12,348	1,174,650	-	-	-	-	965,002
1870	12,957	1,321,592	615	32,510	13,572	1,354,102	-	-	-	-	1,215,067
1871	12,750	1,324,561	391	14,439	13,141	1,339,000	-	-	-	-	1,146,274
1872-a	9,412	1,134,446	987	52,320	10,399	1,186,766	-	-	-	-	940,645

NOTES:

First complete canal opened for traffic in 1824 - maximum allowable draught 9 feet
 Canal enlarged in 1884 " " " 14 "

† Data for 1864 are for six months ended June 30, data for the years 1865 to 1872-a are for the fiscal years ended June 30 and all remaining data are for the calendar years ended December 31.

TRAFFIC ON THE ST. LAWRENCE CANALS

(Continued)

Year †	CANADIAN VESSELS		UNITED STATES VESSELS		Total Number	Vessel Tonnage	FREIGHT CARRIED				
	Number	Tonnage	Number	Tonnage			Originating in Canada		Originating in The United States		Total Tons
					Tons	Per Cent of Total	Tons	Per Cent of Total			
1872	8,033	1,167,398	1,285	77,637	9,318	1,245,035	-	-	-	-	1,006,773
1873	9,600	1,216,365	1,451	87,042	11,051	1,303,407	-	-	-	-	965,610
1874	9,609	1,254,812	1,887	124,591	11,496	1,379,403	-	-	-	-	1,001,573
1875	8,341	1,129,530	1,996	139,819	10,337	1,269,349	-	-	-	-	907,640
1876	8,796	1,275,059	1,731	139,374	10,527	1,414,433	-	-	-	-	947,538
1877	8,296	1,511,360	1,620	127,302	9,916	1,638,662	-	-	-	-	841,486
1878	8,037	1,623,441	1,229	106,845	9,266	1,730,286	-	-	-	-	804,760
1879	8,745	1,711,859	1,287	111,745	10,032	1,823,604	-	-	-	-	943,658
1880	9,829	1,890,094	1,511	125,488	11,340	2,015,582	-	-	-	-	1,072,556
1881	9,413	1,883,027	1,432	122,347	10,845	2,005,374	-	-	-	-	957,446
1882	9,421	1,777,594	1,506	135,431	10,927	1,913,025	-	-	-	-	911,050
1883	8,990	1,746,901	1,278	100,964	10,268	1,847,865	-	-	-	-	856,786
1884	7,326	1,439,845	1,242	91,732	8,568	1,531,577	-	-	-	-	727,048
1885	7,867	1,465,383	1,163	85,313	9,030	1,550,696	-	-	-	-	734,280
1886	9,159	1,667,685	1,269	97,094	10,428	1,764,779	-	-	-	-	913,600
1887	8,903	1,622,796	1,206	92,499	10,109	1,715,295	-	-	-	-	886,982
1888	7,798	1,407,797	1,207	92,299	9,005	1,500,096	-	-	-	-	781,599
1889	8,794	1,656,102	1,381	101,400	10,175	1,757,502	-	-	-	-	919,872
1890	9,322	1,658,568	1,176	82,879	10,498	1,741,447	-	-	-	-	853,853
1891	8,747	1,751,421	1,186	90,208	9,933	1,841,629	-	-	-	-	936,794
1892	9,234	1,813,923	1,178	94,760	10,412	1,908,683	-	-	-	-	966,755
1893	10,092	2,009,702	1,152	95,103	11,244	2,104,805	-	-	-	-	1,158,376
1894	7,335	1,559,524	1,210	137,713	8,545	1,697,237	-	-	-	-	886,778
1895	7,649	1,641,983	1,097	105,433	8,746	1,747,416	-	-	-	-	828,228
1896	10,000	1,917,953	1,095	126,300	11,095	2,044,253	-	-	-	-	1,113,690
1897	10,120	2,113,549	1,017	128,768	11,137	2,242,317	-	-	-	-	1,231,365
1898	10,382	2,331,200	1,166	183,734	11,548	2,514,934	-	-	-	-	1,439,134
1899	9,832	2,238,778	1,038	139,654	10,870	2,378,432	-	-	-	-	1,349,093
1900	8,737	2,033,206	921	105,151	9,658	2,138,357	-	-	-	-	1,309,066
1901	7,695	1,859,135	1,330	176,187	9,025	2,035,322	-	-	-	-	1,208,296
1902	7,416	1,690,532	984	151,025	8,400	1,841,557	-	-	-	-	1,093,133
1903	8,446	2,126,088	1,252	261,125	9,698	2,387,213	-	-	-	-	1,681,206
1904	7,532	1,858,385	1,146	278,864	8,678	2,137,249	-	-	-	-	1,427,316
1905	7,784	1,955,385	1,212	412,816	9,996	2,368,201	-	-	-	-	1,752,855

1906	8,213	2,019,579	1,258	298,118	9,471	2,317,697	-	-	-	-	1,636,117
1907	8,734	2,362,679	1,352	433,448	10,086	2,796,127	-	-	-	-	2,100,466
1908	6,598	2,184,280	1,427	516,267	8,025	2,700,547	1,261,651	62.79	747,451	37.21	2,009,102
1909	8,135	2,476,977	1,136	489,232	9,271	2,966,209	1,710,797	70.96	699,832	29.04	2,410,629
1910	8,834	2,910,395	1,392	482,144	10,226	3,392,539	1,973,441	71.48	787,311	28.52	2,760,752
1911	8,367	3,103,957	1,556	918,078	9,923	3,923,035	2,063,861	66.45	1,041,847	33.55	3,105,708
1912	9,201	3,496,502	1,805	846,333	11,006	4,342,835	2,340,143	67.30	1,137,045	32.70	3,477,188
1913	9,845	4,240,399	1,811	961,371	11,656	5,201,770	2,837,019	65.94	1,465,408	34.06	4,302,427
1914	8,982	4,505,235	1,263	776,490	10,245	5,281,725	2,738,649	62.36	1,652,844	37.64	4,391,493
1915	7,099	3,422,991	1,542	841,792	8,641	4,264,783	2,024,755	59.39	1,384,712	40.61	3,409,467
1916	6,647	3,129,072	1,678	1,016,367	8,325	4,145,439	1,581,195	46.95	1,786,869	53.05	3,363,064
1917	7,327	3,511,986	1,374	819,102	8,701	4,331,088	1,370,533	40.42	2,020,611	59.58	3,391,144
1918	5,687	2,839,918	1,610	970,107	7,297	3,810,025	890,940	29.39	2,140,194	70.61	3,031,134
1919	5,882	3,107,773	1,066	769,172	6,948	3,876,945	1,498,322	51.82	1,393,297	48.18	2,891,619
1920	6,145	3,233,029	813	442,250	6,958	3,675,279	1,285,272	41.89	1,782,690	58.11	3,067,962
1921	8,406	3,929,233	804	545,610	9,210	4,484,843	1,547,743	41.45	2,186,322	58.55	3,734,065
1922	10,484	4,453,716	928	614,232	11,412	5,067,948	2,649,585	61.33	1,670,334	38.67	4,319,919
1923	10,948	4,907,502	652	341,423	11,600	5,248,925	2,970,200	65.40	1,571,328	34.60	4,541,528
1924	10,835	5,449,593	703	433,213	11,538	5,882,806	3,731,869	67.41	1,804,505	32.59	5,536,374
1925	11,753	6,062,833	803	567,394	12,556	6,630,227	4,180,478	67.35	2,026,510	32.65	6,206,988
1926	12,671	5,946,289	857	696,124	13,528	6,642,413	4,350,841	71.05	1,772,860	23.95	6,123,701
1927	13,860	7,370,693	1,110	960,201	14,970	8,330,894	5,347,460	67.58	2,565,492	32.42	7,912,952
1928	13,152	7,416,426	1,258	922,377	14,410	8,338,803	6,139,402	72.99	2,272,140	27.01	8,411,542
1929	10,368	5,470,265	513	307,175	10,881	5,777,440	4,122,533	72.09	1,596,118	27.91	5,718,651
1930	9,172	5,759,178	347	211,882	9,519	5,971,060	4,733,902	76.61	1,445,121	23.39	6,179,023
1931	10,257	5,685,318	265	167,981	10,522	5,853,299	4,793,891	79.41	1,243,089	20.59	6,036,980
1932	7,851	5,510,025	320	224,456	8,171	5,734,481	5,668,797	84.69	1,025,003	15.31	6,693,800
1933	9,072	5,603,283	436	361,841	9,508	5,965,124	5,523,525	79.46	1,427,539	20.54	6,951,064
1934	9,006	5,602,426	339	238,208	9,345	5,840,634	4,919,721	73.87	1,740,331	26.13	6,660,052
1935	10,009	5,847,341	317	209,798	10,163	6,057,139	4,879,714	70.99	1,993,741	29.01	6,873,655
1936	10,026	6,493,286	434	288,731	10,460	6,782,017	6,098,406	73.58	2,190,118	26.42	8,288,524

* Calendar years ended December 31st.

TRAFFIC ON THE TRENT CANAL

Year †	CANADIAN VESSELS		UNITED STATES VESSELS		Total Number	Vessel Tonnage	FREIGHT CARRIED				
	Number	Tonnage	Number	Tonnage			Originating in Canada		Originating in the United States		Total Tons
					Tons	Per Cent of Total	Tons	Per Cent of Total			
1876	538	29,627	-	-	538	29,627	-	-	-	-	31,812
1877	160	8,677	-	-	160	8,677	-	-	-	-	27,155
1878	63	6,397	-	-	63	6,397	-	-	-	-	10,488
1879	5	182	-	-	5	182	-	-	-	-	16,832
1880	8	430	-	-	8	430	-	-	-	-	18,224
1881	30	2,665	-	-	30	2,665	-	-	-	-	14,826
1882	68	6,452	-	-	68	6,452	-	-	-	-	19,783
1883	26	2,067	-	-	26	2,067	-	-	-	-	9,910
1884	40	2,440	-	-	40	2,440	-	-	-	-	13,049
1885	79	3,880	-	-	79	3,880	-	-	-	-	25,707
1886	102	3,620	-	-	102	3,620	-	-	-	-	19,216
1887	146	4,475	-	-	146	4,475	-	-	-	-	15,645
1888	146	2,587	-	-	146	2,587	-	-	-	-	14,799
1889	475	20,607	-	-	475	20,607	-	-	-	-	25,130
1890	1,304	51,800	-	-	1,304	51,800	-	-	-	-	24,679
1891	1,132	52,568	2	8	1,134	52,576	-	-	-	-	20,839
1892	1,290	65,509	1	20	1,291	65,529	-	-	-	-	22,513
1893	1,488	76,537	-	-	1,488	76,537	-	-	-	-	31,219
1894	1,810	83,608	-	-	1,810	83,608	-	-	-	-	36,271
1895	1,947	85,315	-	-	1,947	85,315	-	-	-	-	32,266
1896	1,710	69,333	-	-	1,710	69,333	-	-	-	-	21,145
1897	2,134	106,484	-	-	2,134	106,484	-	-	-	-	36,141
1898	2,363	117,431	-	-	2,363	117,431	-	-	-	-	26,676
1899	2,432	119,892	-	-	2,432	119,892	-	-	-	-	40,160
1900	2,212	100,970	-	-	2,212	100,970	-	-	-	-	43,572
1901	2,011	100,165	-	-	2,011	100,165	-	-	-	-	36,532
1902	2,550	154,232	-	-	2,550	154,232	-	-	-	-	41,690
1903	2,599	148,628	-	-	2,599	148,628	-	-	-	-	42,407
1904	2,273	126,702	14	91	2,287	126,793	-	-	-	-	45,689
1905	2,041	122,718	5	17	2,046	122,735	-	-	-	-	45,231

1906	1,987	80,800	-	-	1,987	80,800	-	-	-	-	28,495
1907	4,785	207,336	-	-	4,785	207,336	-	-	-	-	69,806
1908	5,025	225,819	-	-	5,025	225,819	81,690	100.00	-	-	81,690
1909	3,730	173,928	-	-	3,730	173,928	59,952	100.00	-	-	59,952
1910	3,442	172,085	-	-	3,442	172,085	46,263	100.00	-	-	46,263
1911	4,165	196,973	-	-	4,165	196,973	57,290	100.00	-	-	57,290
1912	3,998	208,855	-	-	3,998	208,855	77,150	100.00	-	-	77,150
1913	3,666	217,081	-	-	3,666	217,081	58,800	100.00	-	-	58,800
1914	3,647	174,647	-	-	3,647	174,647	67,715	100.00	-	-	67,715
1915	3,433	172,780	-	-	3,433	172,780	49,904	100.00	-	-	49,904
1916	3,495	165,486	-	-	3,495	165,486	45,009	100.00	-	-	45,009
1917	2,967	142,979	-	-	2,967	142,979	48,924	100.00	-	-	48,924
1918	3,540	171,996	9	137	3,549	172,133	64,893	100.00	-	-	64,893
1919	3,594	155,895	-	-	3,594	155,895	52,953	100.00	-	-	52,953
1920	5,543	160,584	25	137	5,568	160,721	53,596	99.88	64	0.12	53,660
1921	5,196	152,870	26	245	5,222	153,115	44,083	99.63	164	0.37	44,247
1922	3,664	145,422	23	213	3,687	145,635	42,958	99.81	80	0.19	43,038
1923	2,288	105,990	47	974	2,337	106,964	31,372	99.90	30	0.10	31,402
1924	3,044	120,904	35	604	3,079	121,508	41,095	99.99	4	0.01	41,099
1925	2,681	98,162	20	296	2,701	98,458	36,302	100.00	-	-	36,302
1926	2,171	85,851	49	807	2,220	86,658	27,692	100.00	-	-	27,692
1927	2,577	82,411	79	2,042	2,656	84,453	27,754	100.00	-	-	27,754
1928	2,456	81,899	22	488	2,478	82,387	36,311	100.00	-	-	36,311
1929	2,024	64,588	29	1,315	2,053	65,903	17,843	100.00	-	-	17,843
1930	1,712	54,614	14	234	1,726	54,848	23,785	100.00	-	-	23,785
1931	2,374	53,160	32	627	2,406	53,787	23,172	100.00	-	-	23,172
1932	1,325	35,509	17	335	1,342	35,844	5,189	100.00	-	-	5,189
1933	1,416	30,904	11	177	1,427	31,081	6,341	100.00	-	-	6,341
1934	2,714	32,564	18	238	2,732	32,802	4,624	100.00	-	-	4,624
1935	2,818	32,011	6	102	2,824	32,113	14,157	100.00	-	-	14,157
1936	3,025	30,939	8	129	3,033	31,068	24,047	100.00	-	-	24,047
<p>Various sections opened for traffic 1844 - Allowable draught 4½ ft. Various divisions built and others reconstructed 1906-1918 to 8 ft. 4 in. † Calendar year</p>											

TRAFFIC ON THE MURRAY CANAL

Year /	CANADIAN VESSELS		UNITED STATES VESSELS		Total Number	Vessel Tonnage	FREIGHT CARRIED				
	Number	Tonnage	Number	Tonnage			Originating in Canada		Originating in the United States		Total Tons
							Tons	Per Cent of Total	Tons	Per Cent of Total	
1890	850	101,165	15	339	865	101,504	-	-	-	-	18,783
1891	1,047	147,371	8	260	1,055	147,631	-	-	-	-	11,742
1892	804	158,459	39	496	843	158,955	-	-	-	-	13,729
1893	647	176,534	24	1,285	671	177,819	-	-	-	-	16,340
1894	668	188,592	22	552	690	189,144	-	-	-	-	21,888
1895	552	161,965	16	449	568	162,414	-	-	-	-	11,324
1896	600	175,423	8	177	608	175,600	-	-	-	-	13,056
1897	622	186,957	29	555	651	187,512	-	-	-	-	13,231
1898	653	188,792	24	815	677	189,607	-	-	-	-	15,543
1899	709	171,196	20	638	729	171,834	-	-	-	-	16,788
1900	705	210,983	40	2,196	745	213,179	-	-	-	-	19,067
1901	814	221,951	36	1,381	850	223,332	-	-	-	-	29,535
1902	793	222,965	37	1,032	830	223,997	-	-	-	-	35,178
1903	733	214,019	29	1,561	762	215,580	-	-	-	-	30,389
1904	706	215,529	62	5,776	768	221,305	-	-	-	-	28,439
1905	650	224,360	57	4,477	707	228,837	-	-	-	-	29,421
1906	750	233,780	11	392	761	234,172	-	-	-	-	27,727
1907	1,018	229,896	35	727	1,053	230,623	-	-	-	-	52,402
1908	927	204,247	71	3,034	998	207,281	12,595	48.63	13,306	51.37	25,901
1909	886	265,554	71	2,573	957	268,127	79,254	77.48	23,037	22.52	102,291
1910	1,240	378,037	68	1,413	1,308	379,450	170,680	95.92	7,261	4.08	177,941
1911	1,356	368,189	84	3,021	1,440	371,210	159,409	97.52	4,048	2.48	163,457
1912	1,010	386,302	75	2,761	1,085	389,063	167,520	98.49	2,561	1.51	170,081
1913	1,224	394,494	53	2,133	1,277	397,627	162,095	89.76	18,481	1.24	180,576
1914	914	210,747	57	2,889	971	213,636	80,946	96.47	2,961	3.53	83,907
1915	552	124,506	48	1,407	600	125,913	27,942	90.93	2,786	9.07	30,728

1916	649	108,260	30	1,025	679	109,285	45,085	96.58	1,595	3.42	46,680
1917	866	134,929	25	2,570	891	137,499	54,405	94.45	3,198	5.55	57,603
1918	438	114,573	15	1,146	453	115,719	43,901	98.14	834	1.86	44,735
1919	586	152,610	21	2,434	607	155,044	107,547	99.35	703	.65	108,250
1920	751	142,812	33	812	784	143,624	134,707	98.88	1,528	1.12	136,235
1921	432	57,726	53	1,145	485	58,871	45,280	100.00	-	-	45,280
1922	402	15,254	199	2,306	601	17,560	1,843	100.00	-	-	1,843
1923	636	46,147	298	3,351	934	49,498	2,530	80.47	614	19.53	3,144
1924	305	37,382	81	1,221	386	38,603	369	13.59	2,346	86.40	2,715
1925	351	45,245	142	1,458	493	46,703	563	47.96	611	52.04	1,174
1926	313	106,843	63	10,466	376	117,309	55	6.14	840	93.85	895
1927	440	104,893	141	10,724	581	115,617	520	73.03	192	26.97	712
1928	290	46,081	86	1,282	376	47,363	846	61.08	539	38.92	1,385
1929	301	37,316	148	2,747	449	40,063	2,941	60.33	1,934	39.67	4,875
1930	279	66,128	164	3,572	443	69,700	115	04.97	2,201	95.03	2,316
1931	302	70,988	180	3,879	482	74,867	16	01.80	873	98.20	889
1932	152	11,288	114	1,523	266	12,811	424	100.00	-	-	424
1933	239	18,867	114	2,841	353	21,708	1,288	38.91	2,022	61.09	3,310
1934	181	17,147	53	1,295	234	18,442	1,682	19.21	7,075	80.79	8,757
1935	258	38,900	37	336	295	39,236	2,081	42.29	2,840	57.71	4,921
1936	146	14,578	53	571	199	15,149	1,011	20.61	3,895	79.39	4,906
The Murray Canal opened for traffic 1889 - allowable draught 11 ft.											
+ Calendar year.											

TRAFFIC ON THE OTTAWA AND RIDEAU CANALS (EXCLUDING ST. ANNE'S LOCK)

Year †	CANADIAN VESSELS		UNITED STATES VESSELS		Total Number	Total Vessel Tonnage	Total Freight Carried Tons
	Number	Tonnage	Number	Tonnage			
1858	-	-	-	-	5,159	310,226	224,241
1859	5,717	320,816	46	2,405	5,763	323,221	472,505
1860	5,813	369,667	44	2,666	5,857	372,333	344,079
1861	4,947	332,139	21	2,018	4,968	334,157	213,491
1862	6,088	371,063	35	2,262	6,123	373,325	337,380
1863	6,933	371,574	36	4,587	6,969	376,161	360,028
1864 †	2,297	122,499	16	1,154	2,313	123,653	116,881
1865	7,731	438,325	69	4,625	7,800	442,950	323,141
1866	8,231	479,289	214	14,803	8,445	494,092	397,036
1867	8,775	558,044	239	16,570	9,014	574,614	470,242
1868	9,200	586,482	242	17,755	9,442	604,237	520,563
1869	8,778	591,198	193	13,890	8,971	605,088	503,965
1870	9,081	629,447	619	43,227	9,700	672,674	626,714
1871	8,396	589,196	493	34,480	8,889	623,676	599,435
1872	5,304	360,909	366	25,245	5,670	386,154	519,040
		<u>TRAFFIC ON THE OTTAWA AND RIDEAU CANALS (INCLUDING ST. ANNE'S LOCK FROM JULY 1)</u>					
1872	7,445	498,630	852	57,754	8,297	556,384	774,419

NOTE: The Rideau Canal opened for traffic in 1832 - allowable draught 5 feet.

X TRAFFIC ON THE OTTAWA RIVER CANALS (ST. ANNE'S LOCK ONLY)

Year †	CANADIAN VESSELS		UNITED STATES VESSELS		Total Number	Total Vessel Tonnage	Total Freight Carried Tons
	Number	Tonnage	Number	Tonnage			
1850	-	-	-	-	-	124,302	59,830
1851	1,926	99,561	61	2,846	1,987	102,407	105,933
1852	2,024	108,209	10	440	2,034	108,649	99,054
1853	2,244	126,304	-	-	2,244	126,304	137,159
1854	2,534	153,732	14	624	2,548	154,356	120,069
1855	2,469	146,846	96	4,344	2,565	151,190	126,361
1856	2,746	171,962	128	5,724	2,874	177,686	169,401
1857	2,795	174,445	54	2,510	2,849	176,955	148,845
1858	2,850	179,115	72	3,588	2,922	182,703	154,444
1859	3,171	198,390	84	4,736	3,255	203,126	88,696
1860	3,605	227,451	90	4,740	3,695	232,191	204,574
1861	3,596	216,189	54	3,486	3,650	219,675	199,097
1862	3,914	236,343	86	5,386	4,000	241,729	228,096
1863	4,941	311,475	100	6,798	5,041	318,273	240,370
1864 †	1,290	77,997	22	1,466	1,312	79,463	47,410
1865	5,070	330,775	100	6,607	5,170	337,382	239,530
1866	5,502	361,235	228	15,950	5,730	377,185	282,501
1867	6,426	433,108	250	17,834	6,676	450,942	343,139
1868	6,503	455,716	262	19,228	6,765	474,944	373,583
1869	6,341	464,502	204	14,660	6,545	479,162	376,598
1870	6,738	511,949	618	42,930	7,356	554,879	488,228
1871	5,224	390,666	434	29,941	5,658	420,607	358,962
1872	1,504	91,425	48	3,469	1,552	94,894	100,865

X - Included in Ottawa and Rideau Canals since July 1, 1872.

† - Data for 1864 are for the six months ended June 30, data for the years 1865 to 1872 are for the fiscal years ended June 30 and all remaining data are for the calendar years ended December 31.

St. Anne's Lock opened for traffic 1843 - allowable draught 6 feet
 Enlarged 1886 " " 9 "

TRAFFIC ON THE RIDEAU CANAL

Year †	CANADIAN VESSELS		UNITED STATES VESSELS		Total Number	Vessel Tonnage	FREIGHT CARRIED				
	Number	Tonnage	Number	Tonnage			Originating in Canada		Originating in the United States		Total Tons
					Tons	Per Cent of Total	Tons	Per Cent of Total			
1873	3,529	212,771	106	7,317	3,635	220,088	-	-	-	-	232,438
1874	3,111	179,725	113	8,597	3,224	188,322	-	-	-	-	182,200
1875	2,826	178,868	87	6,965	2,913	185,833	-	-	-	-	163,382
1876	2,810	157,321	86	6,277	2,896	163,598	-	-	-	-	137,802
1877	2,681	158,337	86	6,568	2,767	164,945	-	-	-	-	114,066
1878	2,646	146,721	77	6,583	2,723	153,304	-	-	-	-	109,939
1879	2,834	160,482	36	3,326	2,870	163,808	-	-	-	-	109,415
1880	2,659	148,735	23	1,948	2,682	150,683	-	-	-	-	101,298
1881	2,918	181,684	63	4,774	2,981	186,458	-	-	-	-	113,276
1882	2,768	176,869	64	5,416	2,832	182,285	-	-	-	-	108,425
1883	2,331	150,951	96	7,296	2,427	158,247	-	-	-	-	91,307
1884	1,879	117,255	99	7,566	1,978	124,821	-	-	-	-	76,389
1885	1,784	110,123	126	10,370	1,910	120,493	-	-	-	-	87,944
1886	2,142	130,506	156	11,146	2,298	141,652	-	-	-	-	90,990
1887	2,382	148,784	145	8,373	2,527	156,157	-	-	-	-	92,478
1888	2,529	166,466	220	18,597	2,749	185,063	-	-	-	-	112,248
1889	2,234	145,007	258	19,417	2,492	164,424	-	-	-	-	113,125
1890	2,116	134,884	122	5,794	2,238	140,678	-	-	-	-	113,574
1891	2,244	147,102	250	17,355	2,494	164,457	-	-	-	-	109,313
1892	2,559	189,508	131	6,948	2,690	196,456	-	-	-	-	96,366
1893	2,157	160,426	249	15,489	2,406	175,915	-	-	-	-	104,234
1894	3,298	169,838	192	9,405	3,490	179,243	-	-	-	-	94,479
1895	2,091	153,060	284	15,792	2,375	168,852	-	-	-	-	88,753
1896	1,988	143,221	158	7,309	2,146	150,530	-	-	-	-	73,307
1897	2,368	138,939	185	12,484	2,553	151,423	-	-	-	-	77,276
1898	2,207	144,086	160	9,000	2,367	153,086	-	-	-	-	54,946
1899	2,179	147,134	289	13,648	2,468	160,782	-	-	-	-	69,905
1900	2,351	178,456	228	13,059	2,579	191,515	-	-	-	-	75,432
1901	2,327	157,096	187	7,153	2,514	164,249	-	-	-	-	56,376
1902	2,614	163,339	257	7,230	2,871	170,569	-	-	-	-	50,879
1903	3,673	160,205	293	9,374	3,966	169,579	-	-	-	-	61,120
1904	3,750	162,462	292	7,183	4,042	169,645	-	-	-	-	55,120
1905	4,374	178,804	341	7,755	4,715	186,559	-	-	-	-	59,864

1906	5,621	213,302	246	6,227	5,867	207,529	-	-	-	-	82,159
1907	6,213	184,055	143	3,941	6,356	187,996	-	-	-	-	82,369
1908	7,832	186,018	149	3,922	7,981	189,940	77,519	86.50	12,121	13.50	89,640
1909	2,202	154,267	34	2,054	2,236	156,321	77,643	84.61	14,131	15.39	91,774
1910	2,749	176,447	66	6,795	2,815	183,242	121,043	89.74	13,838	10.26	134,881
1911	3,031	222,562	31	3,038	3,062	225,600	159,738	92.75	12,489	7.25	172,227
1912	2,960	208,689	9	887	2,969	209,576	146,963	91.78	13,170	8.22	160,133
1913	2,798	200,898	22	2,088	2,820	202,986	157,746	92.13	13,477	7.87	171,223
1914	2,600	176,904	35	2,611	2,635	179,575	142,203	93.72	9,536	6.28	151,739
1915	2,070	144,787	6	586	2,076	145,373	114,358	94.68	6,423	5.32	120,781
1916	1,672	117,341	12	1,214	1,684	118,555	98,653	93.57	6,777	6.43	105,430
1917	1,504	105,666	16	1,964	1,520	107,630	81,330	96.19	3,219	3.81	84,549
1918	1,156	75,478	8	3,316	1,164	78,803	50,663	93.58	3,473	6.42	54,136
1919	1,833	122,576	2	192	1,835	122,768	99,371	95.97	4,168	4.03	103,539
1920	1,709	118,751	9	1,124	1,718	119,875	95,002	97.10	2,835	2.90	97,837
1921	1,441	99,832	2	204	1,443	100,036	92,015	96.85	2,997	3.15	95,012
1922	1,893	105,840	5	242	1,898	106,082	86,369	99.98	13	0.02	86,382
1923	1,824	104,279	12	821	1,836	105,100	79,731	98.07	1,568	1.93	81,299
1924	1,408	102,842	11	542	1,419	103,384	85,044	98.90	942	1.10	85,986
1925	1,458	103,503	38	1,533	1,496	105,036	85,722	99.93	63	0.07	85,785
1926	1,052	77,755	18	722	1,070	78,477	55,987	99.88	65	0.12	56,052
1927	1,139	84,081	30	1,525	1,169	85,606	57,947	99.99	4	0.01	57,951
1928	936	78,368	19	685	955	79,053	51,999	100.00	-	-	51,999
1929	744	64,259	17	602	761	64,861	45,901	100.00	-	-	45,901
1930	506	51,104	11	348	517	51,452	28,210	100.00	-	-	28,210
1931	505	45,843	6	130	511	45,973	27,521	100.00	-	-	27,521
1932	439	42,895	11	216	450	43,111	25,690	100.00	-	-	25,690
1933	531	45,208	9	122	540	45,330	21,868	100.00	-	-	21,868
1934	571	43,145	4	69	575	43,214	21,846	100.00	-	-	21,846
1935	619	42,206	5	92	624	42,298	20,426	100.00	-	-	20,426
1936	462	29,546	11	226	473	29,772	15,604	100.00	-	-	15,604

For data prior to 1873 see pages 20-21.

† Calendar year.

TRAFFIC ON THE OTTAWA CANALS

Year †	CANADIAN VESSELS		UNITED STATES VESSELS		Total Number	Vessel Tonnage	FREIGHT CARRIED				
	Number	Tonnage	Number	Tonnage			Originating in Canada		Originating in the United States		Total Tons
					Tons	Per cent of Total	Tons	Per cent of Total			
1873	4,211	282,104	886	62,422	5,097	344,526	-	-	-	-	518,743
1874	4,359	298,097	1,051	77,850	5,410	375,947	-	-	-	-	559,988
1875	3,880	264,799	921	69,999	4,801	334,798	-	-	-	-	497,494
1876	4,143	276,352	831	67,977	4,974	344,329	-	-	-	-	514,481
1877	3,590	390,847	856	72,093	4,446	462,940	-	-	-	-	487,651
1878	3,092	378,012	642	54,463	3,734	432,475	-	-	-	-	454,793
1879	3,286	375,748	772	69,025	4,058	444,773	-	-	-	-	486,722
1880	4,305	460,564	897	80,914	5,202	541,478	-	-	-	-	644,549
1881	4,188	470,609	719	71,088	4,907	541,697	-	-	-	-	698,260
1882	4,018	482,758	717	70,883	4,735	553,641	-	-	-	-	790,400
1883	3,379	443,267	755	74,456	4,134	517,723	-	-	-	-	743,274
1884	2,936	391,472	622	62,540	3,558	454,012	-	-	-	-	673,760
1885	3,062	405,980	510	51,555	3,572	457,535	-	-	-	-	763,236
1886	3,661	417,506	563	56,436	4,224	473,942	-	-	-	-	745,335
1887	2,718	368,651	628	61,764	3,346	430,415	-	-	-	-	683,047
1888	2,738	379,419	436	42,868	3,174	422,287	-	-	-	-	693,249
1889	2,635	372,163	631	61,419	3,266	433,582	-	-	-	-	694,771
1890	2,534	371,751	295	28,488	2,829	400,239	-	-	-	-	651,355
1891	2,148	328,602	316	31,125	2,464	359,727	-	-	-	-	585,041
1892	2,358	332,353	309	28,332	2,667	360,685	-	-	-	-	647,011
1893	2,263	296,087	185	17,959	2,448	314,046	-	-	-	-	581,521
1894	2,059	291,836	138	13,435	2,197	305,271	-	-	-	-	562,010
1895	2,034	273,585	161	15,531	2,195	289,116	-	-	-	-	541,220
1896	1,871	266,279	202	19,842	2,073	286,121	-	-	-	-	502,046
1897	2,053	285,746	145	14,302	2,198	300,048	-	-	-	-	562,370
1898	2,147	291,667	254	24,971	2,401	316,639	-	-	-	-	549,986
1899	2,373	292,457	280	27,520	2,653	319,977	-	-	-	-	520,105
1900	1,910	250,048	204	20,068	2,114	270,116	-	-	-	-	389,145
1901	1,662	241,981	159	15,577	1,821	257,558	-	-	-	-	445,862
1902	1,803	239,282	103	10,175	1,906	249,457	-	-	-	-	444,682
1903	1,965	253,905	129	12,559	2,094	266,464	-	-	-	-	436,473
1904	1,712	217,515	93	9,315	1,805	226,830	-	-	-	-	335,993
1905	1,834	226,439	318	31,458	2,152	257,897	-	-	-	-	390,771

1906	1,922	235,179	285	27,666	2,207	262,845	-	-	-	-	397,415
1907	1,801	246,790	233	22,455	2,034	269,245	-	-	-	-	336,850
1908	1,773	215,183	109	10,597	1,882	225,780	258,527	100.00	-	-	258,527
1909	1,935	365,984	246	24,619	2,181	390,603	331,104	98.27	5,835	1.73	336,939
1910	2,189	410,907	412	41,963	2,601	452,820	377,268	97.93	7,993	2.07	385,261
1911	2,109	377,925	304	30,536	2,413	408,461	312,269	97.56	7,802	2.44	320,071
1912	2,662	480,751	397	40,598	3,059	521,349	383,515	97.75	8,835	2.25	392,350
1913	2,647	497,649	291	29,718	2,938	527,367	358,465	98.09	6,973	1.91	365,438
1914	2,197	392,516	275	27,257	2,472	419,773	325,059	96.99	10,073	3.01	335,132
1915	1,649	297,434	391	39,464	2,040	336,898	267,406	98.18	4,964	1.82	272,370
1916	1,659	302,012	328	33,851	1,987	335,863	226,381	95.26	11,270	4.74	237,651
1917	1,514	293,997	282	29,085	1,696	323,082	200,953	93.53	13,882	6.47	214,835
1918	1,165	218,992	323	34,498	1,488	253,490	159,700	95.53	7,470	4.47	167,170
1919	1,642	286,089	148	15,019	1,790	301,108	215,178	98.50	3,260	1.50	218,438
1920	1,373	249,934	178	19,195	1,551	269,129	226,594	97.12	6,735	2.88	233,329
1921	1,706	229,469	101	11,130	1,807	240,599	168,278	97.97	3,491	2.03	171,769
1922	1,930	282,104	267	28,650	2,197	310,754	208,940	97.99	4,287	2.01	213,227
1923	2,217	318,239	211	23,165	2,428	341,404	228,448	98.01	4,644	1.99	233,092
1924	2,140	291,123	173	18,900	2,313	310,023	203,101	98.82	2,433	1.18	205,534
1925	2,095	301,629	151	16,226	2,246	317,855	208,603	97.05	6,337	2.95	214,940
1926	2,422	415,257	151	15,696	2,573	430,953	320,918	99.83	538	0.17	321,456
1927	3,017	553,140	193	23,055	3,210	576,195	447,873	98.27	7,886	1.73	455,759
1928	3,694	606,187	178	23,014	3,872	629,201	477,073	97.80	10,713	2.20	487,786
1929	3,509	652,730	106	12,209	3,615	664,939	519,656	96.76	17,381	3.24	537,037
1930	3,209	687,987	49	5,013	3,258	693,000	534,921	98.89	6,012	1.11	540,933
1931	3,111	618,807	24	1,984	3,135	620,791	485,284	98.45	7,635	1.55	492,919
1932	1,334	275,898	26	2,833	1,360	278,731	252,255	99.50	1,268	0.50	253,523
1933	1,421	260,079	27	4,891	1,448	264,970	250,824	98.84	2,940	1.16	253,764
1934	1,664	326,510	15	2,215	1,679	328,725	271,051	99.24	2,070	0.76	273,121
1935	1,750	332,703	52	11,234	1,802	343,937	287,888	99.43	1,638	0.57	289,526
1936	1,646	284,337	96	22,299	1,742	306,636	255,629	97.76	5,864	2.24	261,493
<p>NOTES: St. Anne's Lock opened for traffic 1843 - allowable draught 6 feet " " enlarged 1886 " " 9 " Grenville Locks opened for traffic 1829 " " 6 " " " enlarged 1882 " " 9 " Carillon Locks opened for traffic 1833 " " 6 " " " enlarged 1882 " " 9 "</p> <p>For data prior to 1873 see pages 20-21.</p>											
+ Calendar year.											

TRAFFIC ON THE BURLINGTON BAY CANAL.

Year †	CANADIAN VESSELS		UNITED STATES VESSELS		Total Number	Total Vessel Tonnage	Total Freight Carried Tons
	Number	Tonnage	Number	Tonnage			
1850	-	-	-	-	-	473,690	54,996
1851	1,998	380,649	535	101,261	2,533	481,910	58,108
1852	2,409	400,261	537	155,960	2,946	556,221	75,411
1853	1,261	192,379	218	26,789	1,479	219,168	87,858
1854	1,030	151,509	174	17,569	1,204	169,078	77,778
1855	1,222	361,732	97	1,320	1,319	363,052	80,210
1856	797	411,783	88	38,260	885	450,043	97,104
1857	621	133,469	71	8,941	692	142,410	69,751
1858	676	146,845	35	6,188	711	153,033	59,254
1859	652	100,022	45	8,046	697	108,068	88,521
1860	683	108,104	88	15,972	771	124,076	140,251
1861	1,659	275,335	125	18,909	1,784	294,244	178,674
1862	1,835	274,153	83	12,565	1,918	286,718	191,777
1863	1,555	227,047	92	13,398	1,647	240,445	162,305
1864 †	565	91,779	54	7,530	619	99,309	59,524
1865	1,370	231,831	69	9,987	1,439	241,818	121,976
1866	1,365	224,415	63	8,359	1,428	232,774	135,936
1867	1,623	278,311	38	4,407	1,661	282,718	172,384
1868	1,595	260,322	32	4,210	1,627	264,532	138,837
1869	1,442	249,174	29	2,535	1,471	251,709	129,264
1870	1,494	263,495	52	7,035	1,546	270,530	159,967
1871	1,468	251,821	81	10,590	1,549	262,411	141,882
1872-a	1,339	249,149	102	16,677	1,441	265,826	160,974
1872-b	1,299	224,298	146	17,752	1,445	242,050	142,636
1873	1,401	240,586	93	8,174	1,494	248,760	178,080
1874	1,400	275,037	104	16,336	1,504	291,373	174,556
1875	1,187	258,450	66	8,195	1,253	266,645	125,524
1876	914	205,412	17	2,754	931	208,166	99,351
1877	1,483	328,728	62	12,129	1,545	340,857	100,798
1878	1,030	388,810	25	4,777	1,055	393,587	88,702
1879	902	333,334	8	906	910	334,240	87,877
1880	982	350,727	7	1,136	989	351,863	98,608
1881	998	372,564	6	626	1,004	373,190	145,178
1882	779	290,860	-	-	779	290,860	107,329
1883	600	196,106	4	528	604	196,634	81,035
1884	456	136,984	12	1,612	468	138,596	75,895
1885	407	110,673	18	4,416	425	115,089	73,174
1886	1	325	-	-	1	325	-

TRAFFIC ON THE CHAMBLY CANAL (INCLUDING ST. OURS LOCK)

Year †	CANADIAN VESSELS		UNITED STATES VESSELS		Total Number	Total Vessel Tonnage	Total Freight Carried Tons
	Number	Tonnage	Number	Tonnage			
1848	-	-	-	-	659	22,322	18,835
1849	-	-	-	-	1,264	128,642	77,216
1850	-	-	-	-	2,878	143,194	109,040
1851	1,517	81,544	210	9,147	1,727	90,691	110,727
1852	1,097	55,038	539	29,479	1,636	84,517	87,514
1853	1,939	98,709	225	11,460	2,164	110,169	113,585
1854	1,191	61,121	292	13,206	1,483	74,327	83,247
1855	1,814	112,527	533	24,274	2,347	136,801	117,484
1856	1,892	117,398	725	33,672	2,617	151,070	129,666
1857	1,881	121,228	750	36,836	2,631	158,064	133,687
1858	1,973	124,179	709	35,644	2,682	159,823	126,645
1859	2,287	149,829	881	48,223	3,168	198,052	176,693
1860	2,779	185,539	954	53,617	3,733	239,156	217,117
1861	1,473	86,159	646	36,535	2,119	122,694	116,239
1862	1,861	115,039	657	39,513	2,518	154,552	148,301
1863	2,972	220,110	808	52,518	3,780	272,628	253,319
1864 †	782	64,009	182	12,497	964	76,506	66,176
1865	2,844	206,947	897	61,368	3,741	268,315	216,553
1866	3,625	289,590	1,060	73,580	4,685	363,170	320,467
1867	4,295	352,361	933	66,283	5,228	418,644	410,430
1868	4,517	355,824	980	69,641	5,497	425,465	455,553
1869	4,435	357,941	1,010	71,707	5,445	429,648	400,788
1870	5,427	459,888	1,184	83,332	6,611	543,220	518,334
1871	4,557	373,014	1,259	85,401	5,816	458,415	549,442
1872-a	3,844	327,911	1,199	81,998	5,043	409,909	346,128

St. Ours lock opened for traffic 1849 - allowable draught 7 feet
 " " enlarged 1932 " " 12 "

Chamblly Canal opened for traffic 1849 " " 6½ "

† Data for 1864 are for six months ended June 30, data for the years 1865 to 1872-a are for the fiscal years ended June 30, and all remaining data are for the calendar years ended December 31.

TRAFFIC ON THE CHAMPELY CANAL (INCLUDING ST. OURS LOCK)

(Continued)

Year †	CANADIAN VESSELS		UNITED STATES VESSELS		Total Number	Vessel Tonnage	FREIGHT CARRIED				
	Number	Tonnage	Number	Tonnage			Originating in Canada		Originating in the United States		Total Tons
							Tons	Per Cent of Total	Tons	Per Cent of Total	
1872	3,904	321,885	1,426	96,817	5,330	418,702	-	-	-	-	376,559
1873	2,450	196,698	1,453	100,957	3,903	297,655	-	-	-	-	260,407
1874	1,659	127,784	1,626	121,763	3,285	249,547	-	-	-	-	257,820
1875	1,348	139,468	1,577	121,876	2,925	261,344	-	-	-	-	242,115
1876	1,329	127,510	1,146	93,100	2,475	220,610	-	-	-	-	208,426
1877	1,481	144,062	1,072	89,929	2,553	233,991	-	-	-	-	197,703
1878	1,603	170,590	880	71,220	2,483	241,810	-	-	-	-	157,288
1879	1,840	199,638	865	74,854	2,705	274,492	-	-	-	-	180,569
1880	2,119	221,576	1,177	105,600	3,296	327,176	-	-	-	-	202,067
1881	1,917	200,171	1,185	116,273	3,102	316,444	-	-	-	-	223,924
1882	1,894	207,119	1,422	143,310	3,316	350,429	-	-	-	-	263,711
1883	1,566	178,504	1,268	123,323	2,834	301,827	-	-	-	-	232,279
1884	1,292	151,208	1,186	116,780	2,478	267,988	-	-	-	-	199,146
1885	1,112	122,548	1,098	108,173	2,210	230,721	-	-	-	-	184,212
1886	1,031	122,509	1,112	109,689	2,143	232,198	-	-	-	-	193,940
1887	1,020	117,381	1,250	121,005	2,270	238,386	-	-	-	-	223,272
1888	974	115,699	1,303	127,442	2,277	243,141	-	-	-	-	241,753
1889	1,133	117,495	1,258	122,412	2,391	239,907	-	-	-	-	220,281
1890	1,100	134,498	1,008	97,249	2,108	231,747	-	-	-	-	202,407
1891	1,019	108,834	1,034	116,896	2,053	225,730	-	-	-	-	229,264
1892	1,229	123,782	1,467	139,097	2,696	262,879	-	-	-	-	270,766
1893	1,180	121,348	1,572	152,735	2,752	274,083	-	-	-	-	312,870
1894	893	96,507	1,599	152,849	2,492	249,356	-	-	-	-	277,608
1895	1,102	132,108	2,160	199,728	3,262	331,836	-	-	-	-	359,027
1896	923	99,406	2,062	201,321	2,985	300,727	-	-	-	-	344,935
1897	956	115,285	2,143	207,302	3,099	322,587	-	-	-	-	352,136
1898	753	97,713	1,588	154,993	2,341	252,706	-	-	-	-	271,336
1899	670	99,619	2,176	213,004	2,846	312,623	-	-	-	-	362,635
1900	664	87,580	2,177	213,175	2,841	300,755	-	-	-	-	348,561
1901	716	91,371	2,061	214,463	2,777	305,834	-	-	-	-	359,798
1902	1,267	141,083	2,524	246,368	3,791	387,451	-	-	-	-	379,442
1903	936	110,448	2,509	232,560	3,445	343,008	-	-	-	-	346,571
1904	795	101,937	2,680	261,029	3,475	362,966	-	-	-	-	448,187
1905	719	97,012	2,624	282,100	3,343	379,112	-	-	-	-	447,069

1906	801	99,313	3,089	305,411	3,890	404,724	-	-	-	-	498,939
1907	603	98,638	3,576	352,627	4,179	451,265	-	-	-	-	625,282
1908	685	74,213	2,909	280,730	3,594	354,943	379,674	75.44	123,602	24.56	503,276
1909	670	97,535	4,055	411,019	4,725	508,554	623,421	82.89	128,696	17.11	752,117
1910	619	97,797	3,600	369,449	4,219	467,246	525,700	78.54	143,599	21.46	669,299
1911	497	51,451	3,511	367,978	4,008	419,429	443,846	74.00	155,983	26.00	599,829
1912	486	45,550	3,319	344,435	3,705	389,985	447,702	72.40	170,713	27.60	618,415
1913	472	62,140	2,725	273,671	3,197	335,811	358,801	64.58	196,801	35.42	555,602
1914	346	52,736	2,348	241,672	2,694	294,408	308,091	70.52	128,814	29.48	436,905
1915	488	58,998	2,301	235,193	2,789	294,191	292,191	61.04	186,516	38.96	478,707
1916	508	64,064	1,811	186,298	2,319	250,362	257,181	64.46	141,796	35.54	398,977
1917	400	65,806	2,060	202,970	2,460	268,776	281,292	64.69	153,526	35.31	434,818
1918	571	86,402	1,726	177,320	2,297	263,722	262,556	71.12	106,630	28.88	369,186
1919	383	65,604	1,040	107,605	1,423	173,209	138,420	56.97	104,541	43.03	242,961
1920	500	77,666	1,295	134,978	1,795	212,644	228,022	70.09	97,300	29.91	325,322
1921	394	58,869	844	97,931	1,238	146,800	82,421	45.72	97,859	54.28	180,280
1922	406	57,218	1,012	107,290	1,418	164,508	143,943	78.64	39,100	21.36	183,043
1923	435	62,336	842	102,226	1,277	165,162	130,930	61.41	82,260	38.58	213,190
1924	491	65,398	1,032	123,092	1,523	188,490	128,996	57.20	96,522	42.80	225,518
1925	453	63,610	1,023	119,931	1,476	183,541	137,120	60.05	66,600	39.95	203,720
1926	510	65,834	943	110,241	1,453	176,075	129,569	63.50	74,473	36.50	204,042
1927	541	67,402	870	107,370	1,411	174,772	116,709	57.06	87,827	42.94	204,536
1928	414	52,679	750	93,983	1,164	146,662	98,680	54.86	81,188	45.14	179,868
1929	397	55,559	569	67,869	966	123,428	74,652	60.65	48,425	39.35	123,077
1930	307	26,497	472	55,492	779	81,989	62,144	62.14	37,854	37.86	99,998
1931	327	23,311	194	16,259	521	39,570	35,432	70.39	14,904	29.61	50,336
1932	203	15,045	116	10,384	319	25,429	19,192	65.39	10,158	34.61	29,350
1933	264	18,653	91	10,292	355	28,945	21,375	79.43	5,537	20.57	26,912
1934	325	26,991	105	11,052	430	38,043	30,428	91.30	2,898	8.70	33,326
1935	332	29,157	136	19,260	468	48,417	36,851	83.34	7,368	16.66	44,219
1936	663	66,117	210	35,037	873	101,154	67,807	85.04	11,924	14.96	79,731

† Calendar year.

TRAFFIC ON ST. PETER'S CANAL

Year †	CANADIAN VESSELS		UNITED STATES VESSELS		Total Number	Total Tonnage	FREIGHT CARRIED				
	Number	Tonnage	Number	Tonnage			Originating in Canada		Originating in the United States		Total Tons
					Tons	Per cent of Total	Tons	Per cent of Total			
1873	549	20,253	-	-	549	20,253	-	-	-	-	10,421
1874	642	24,554	-	-	642	24,554	-	-	-	-	12,248
1875	807	30,581	-	-	807	30,581	-	-	-	-	18,116
1876	33	1,256	-	-	33	1,256	-	-	-	-	752
1877	-	-	-	-	-	-	-	-	-	-	-
1878	-	-	-	-	-	-	-	-	-	-	-
1879	-	-	-	-	-	-	-	-	-	-	-
1880	153	7,232	-	-	153	7,232	-	-	-	-	4,045
1881	884	42,651	-	-	884	42,651	-	-	-	-	13,814
1882	762	37,512	-	-	762	37,512	-	-	-	-	8,359
1883	1,330	101,658	-	-	1,330	101,658	-	-	-	-	15,695
1884	1,494	133,165	-	-	1,494	133,165	-	-	-	-	19,115
1885	1,148	68,716	-	-	1,148	68,716	-	-	-	-	20,160
1886	1,206	57,322	-	-	1,206	57,322	-	-	-	-	25,887
1887	1,691	82,597	-	-	1,691	82,597	-	-	-	-	41,174
1888	1,581	90,401	3	253	1,584	90,654	-	-	-	-	39,149
1889	2,161	118,262	-	-	2,161	118,262	-	-	-	-	55,443
1890	1,294	70,985	-	-	1,294	70,985	-	-	-	-	32,231
1891	1,221	71,664	-	-	1,221	71,664	-	-	-	-	34,520
1892	1,885	126,353	6	1,919	1,891	128,272	-	-	-	-	59,042
1893	1,462	99,825	28	9,576	1,490	109,401	-	-	-	-	47,606
1894	1,491	94,964	31	9,163	1,522	104,127	-	-	-	-	55,460
1895	248	16,416	-	-	248	16,416	-	-	-	-	9,828
1896	2,204	184,750	35	13,065	2,239	197,815	-	-	-	-	65,508
1897	1,624	104,650	9	3,858	1,633	108,508	-	-	-	-	67,093
1898	1,679	108,518	13	2,942	1,692	111,460	-	-	-	-	64,490
1899	1,705	121,643	6	439	1,711	122,082	-	-	-	-	70,804
1900	1,621	115,316	7	467	1,628	115,783	-	-	-	-	73,813
1901	1,738	119,817	7	933	1,745	120,750	-	-	-	-	88,257
1902	1,664	113,975	7	871	1,671	114,846	-	-	-	-	73,538
1903	1,749	118,304	11	1,760	1,789	119,093	-	-	-	-	90,864
1904	1,647	99,479	7	1,020	1,654	100,499	-	-	-	-	73,416
1905	1,586	103,796	9	1,163	1,595	104,959	-	-	-	-	81,077

1906	1,416	94,240	2	477	1,418	94,717	-	-	-	-	76,327
1907	1,335	91,116	2	355	1,337	91,471	-	-	-	-	73,167
1908	1,380	95,560	-	-	1,380	95,560	72,015	100.00	-	-	72,015
1909	1,428	102,423	11	1,203	1,439	103,626	79,150	99.12	700	0.88	79,850
1910	1,466	106,242	4	811	1,470	107,053	85,722	99.73	229	0.27	85,951
1911	1,260	89,270	-	-	1,260	89,270	75,298	100.00	-	-	75,298
1912	1,205	88,519	8	626	1,213	89,145	74,509	99.60	300	0.40	74,809
1913	1,324	94,890	13	1,048	1,337	95,938	71,514	100.00	-	-	71,514
1914	1,192	80,252	8	413	1,200	80,665	54,164	99.97	16	0.03	54,180
1915	71	5,650	-	-	71	5,650	2,895	100.00	-	-	2,895
1916	133	9,201	-	-	133	9,201	9,629	100.00	-	-	9,629
1917	1,144	82,405	2	89	1,146	82,494	62,254	100.00	-	-	62,254
1918	1,067	68,741	4	546	1,071	69,287	59,716	100.00	-	-	59,716
1919	1,155	78,412	17	1,522	1,172	79,934	64,879	100.00	-	-	64,879
1920	1,194	82,908	8	524	1,202	83,432	61,373	100.00	-	-	61,373
1921	1,109	76,327	8	698	1,117	77,025	56,123	100.00	-	-	56,123
1922	1,067	74,702	7	393	1,074	75,095	52,737	100.00	-	-	52,737
1923	978	73,035	10	1,305	989	74,341	46,574	100.00	-	-	46,574
1924	1,363	87,072	15	819	1,378	87,891	51,861	99.87	68	0.13	51,929
1925	1,183	76,622	13	4,741	1,196	81,363	35,691	100.00	-	-	35,691
1926	990	65,507	18	3,976	1,008	69,483	43,545	100.00	-	-	43,545
1927	903	58,840	19	5,345	922	64,185	46,306	100.00	-	-	46,306
1928	964	65,306	20	6,287	984	71,593	52,848	100.00	-	-	52,848
1929	909	69,689	27	4,749	936	74,438	49,650	100.00	-	-	49,650
1930	845	76,861	20	2,923	865	79,784	59,973	100.00	-	-	59,973
1931	871	69,849	22	4,270	893	74,119	47,460	99.85	68	0.15	47,528
1932	790	61,233	70	6,304	860	67,537	40,814	99.96	17	0.04	40,831
1933	879	47,630	32	4,196	911	51,826	31,792	100.00	-	-	31,792
1934	926	61,821	36	6,176	962	67,997	52,640	100.00	-	-	52,640
1935	999	81,456	22	1,707	1,021	83,163	54,235	99.35	357	0.65	54,592
1936	987	74,963	15	343	1,002	75,306	56,257	100.00	-	-	56,257

NOTES:

St. Peter's Canal opened for traffic 1869 - allowable draught 13 ft.
 " " enlarged 1881 " " 18 "
 1917 " " 17 "

Canal closed during 1871 - 1879.

+ Calendar year.



TRAFFIC ON ST. ANDREW'S CANAL

Year †	CANADIAN VESSELS		FREIGHT CARRIED
	Number	Tonnage	(Canadian) Tons
1910	202	44,887	8,283
1911	423	111,437	47,135
1912	1,260	210,973	95,549
1913	988	199,278	81,295
1914	334	106,044	42,013
1915	1,087	97,710	21,982
1916	552	58,934	13,438
1917	113	26,093	7,174
1918	130	28,062	4,640
1919	123	25,499	3,763
1920	154	26,367	5,775
1921	534	27,514	6,231
1922	262	46,524	25,387
1923	324	50,498	37,364
1924	387	68,299	50,982
1925	384	71,843	70,799
1926	402	80,960	62,491
1927	350	70,019	64,331
1928	364	74,259	51,948
1929	678	89,867	58,628
1930	847	115,645	89,715
1931	277	30,475	16,276
1932	336	55,744	37,182
1933	488	52,296	21,351
1934	459	38,929	7,282
1935	510	63,508	19,063
1936	544	70,462	23,215

NOTE: This canal is used only by Canadian vessels. It is on the Red River 15 miles north of Winnipeg and is not shown on the accompanying map.

Opened for traffic 1910 - allowable draught 17 feet.

† Calendar year.