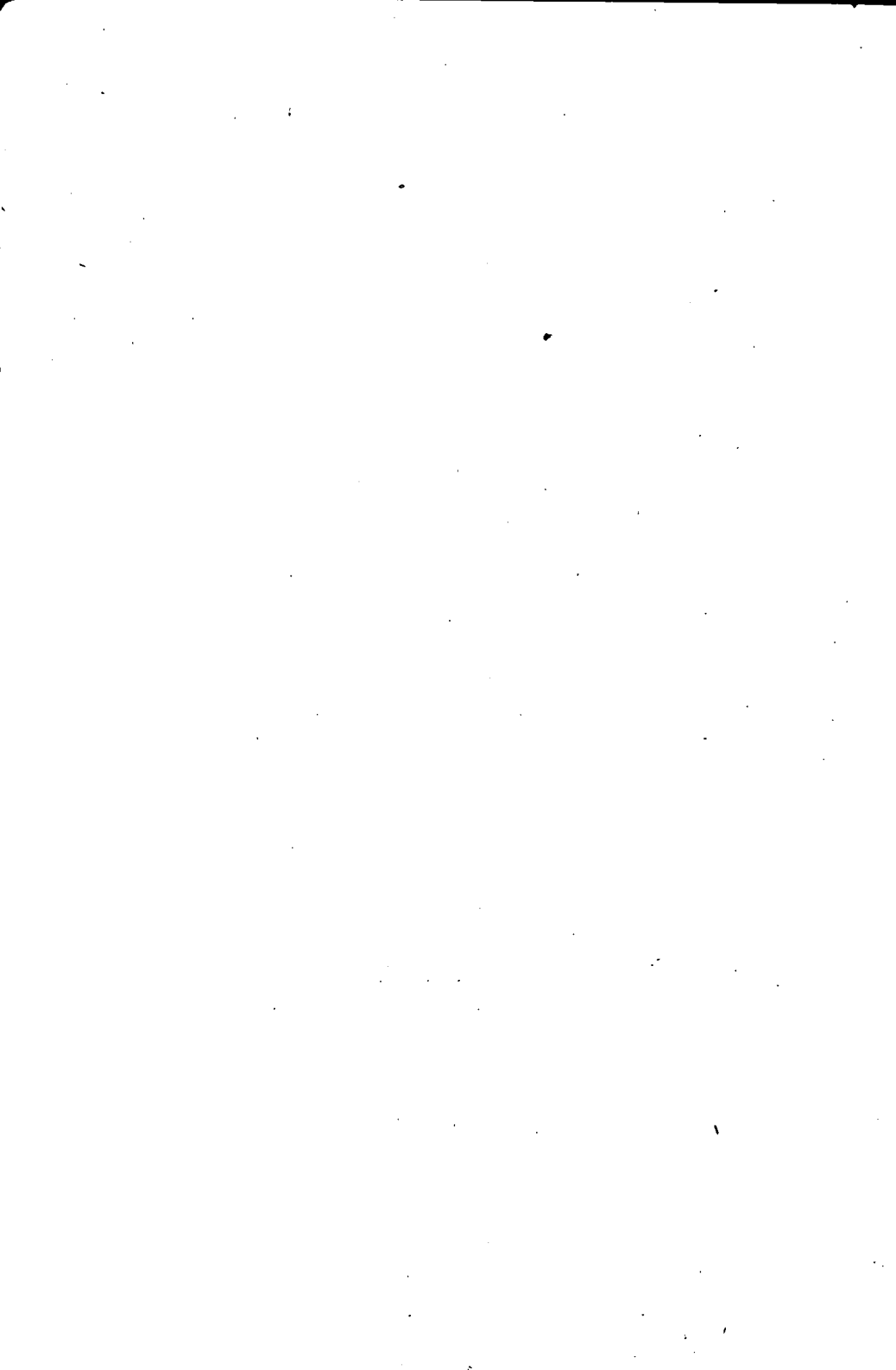

CENSUS OF CANADA,
RECENSEMENT DU CANADA,
1891.

DEPARTMENT OF AGRICULTURE,
DÉPARTEMENT DE L'AGRICULTURE,
OTTAWA, CANADA.

BULLETIN No. 2.

OCT. 1891.



CENSUS OF CANADA, 1891.

BULLETIN No. 2.

DEPARTMENT OF AGRICULTURE,

OTTAWA, October, 1891.

Bulletin No. 2 relates to the population of the sub-districts of the Province of Ontario. The population of these sub-districts is given according to the electoral divisions established by the Redistribution Act of 1882.

For the purpose of comparison the population returns of 1871 and 1881, have been readjusted in all cases where the boundaries of the electoral district are not the same now as they were in previous Census takings.

In cities where the electoral are not coterminous with the municipal bounds, the population included in both areas is given.

Where new sub-divisions have been created since 1881, affecting the comparison of population, the fact is mentioned so that by the addition of the population of the new sub-district to that of the old, from which it has been taken, accurate comparison can be made.

In order to facilitate comparisons the population has been given by groups of counties arranged geographically, as for instance: the Lake Ontario group, which includes the counties bordering on Lake Ontario.

Of the 50 counties thus grouped 29 show increases and 21 decreases in population.

In comparison with the State of New York the percentage of decrease to the total number of counties is: Ontario, 43.7; New York, 38.3; showing clearly that the same general causes have been at work in both cases.

The decreases in Ontario are accounted for, partly, by:—

1st. The difference in the mode of counting the people.

2nd. The movement of population along the lines observed in every civilized country, viz. : (a) westward to the virgin soil, and (b) from the rural parts to the cities and towns.

3rd. The introduction of agricultural machinery, doing away, to a certain extent, with hired help.

4th. The denudation of the forest covering.

5th. The opening of new territory by railways.

6th. The development of mining industry.

1st. In connection with the first cause it may be mentioned that the regulations respecting absentees and the rules to prevent duplication were for the Census of 1891 much stricter than for previous Census takings.

The *de facto* system as employed in England gives results that must be inaccurate as regards the floating population in the cities, unduly increasing the urban population at the expense of the rural districts. This inaccuracy cannot be guarded against.

The great dangers to be guarded against in the *de jure* system (which is the one employed in Canada) are the two already mentioned.

To prevent the indiscriminate counting of absentees a time limit was introduced for the first time in the recent Census. The application of this limit restricted the enumerators to taking only those persons whose absence from the Dominion or the Province was really temporary. The absence of the time limit in 1881 led to considerable laxity and persons were included in the population who had been out of the country for years.

Respecting the large class designated "servants" very considerable duplication occurred in 1881, domestics, clerks and others having been taken in the cities and towns where they pursued their vocation, and also in the rural districts where their parents lived. The central idea of the *de jure* system is the home. But when a young man leaves home to begin his life work, or a young woman goes from the parental roof to become a domestic, it may be considered that the home has been left for good. In the recent census the line was drawn at this point, and duplication was carefully guarded against; all the members of this class, excepting those temporarily employed, were counted where they did business.

2nd. As respects the second cause, farming districts have been most seriously affected by it, not only in Ontario and other Provinces of Canada, but as well in every country. In Maine, Massachusetts, Vermont and New York the numerical increase in the urban element is greater than the increase of the total population; so that in these States the rural population has actually diminished in number. In New York State the rural population in 1880 was 49·02 per cent. of the whole; in 1890 it was 40·50 per cent.

In Ontario, the movement of the wealthier farmers to the cities, and of the young farmers with their way to make in the world to regions where cheaper land can be obtained—this double movement, one to the North and West, and the other to the South, has affected population in all the central parts, but especially in the counties with the best soil, and, therefore, with the highest priced lands, the older farmers being willing to sell out fearing decrease in value; and the younger men going away in search of good land at cheap prices.

3rd. The third cause has operated prejudicially to the rural population to a very considerable extent, leading to amalgamation of farms and to reduction of hired hands. Heads count in a Census; threshing machines do not.

4th. The fourth cause has affected localities; the mill-hands, lumbermen in camps, &c., removing from counties once heavily timbered but now deprived of their forest wealth.

5th. The opening of over 6,000 miles of railway within the last decennary has tended to draw population from the older regions by providing a new occupation for the young men, and by affording easy and cheap means of migration.

6th. The mining regions of Algoma and Nipissing have increased from 25,974 of population in 1881 to 54,879 in 1891—an increase of over 111 per cent. A large proportion of this population will be found to have been born in Ontario.

Besides these causes there is undoubtedly a tendency to stagnation, observable in France, in a great part of Belgium, in Scotland, somewhat in England, and in certain districts of the United States.

In the latter country, notwithstanding the influx of $5\frac{1}{4}$ million of immigrants from Europe the increase in 1880-90 was at a lessened ratio as compared with the previous ten years, the figures being, for 1880-90, 24·86 per cent., and for 1870-80, 30·08. From this tendency Canada cannot hope to escape altogether, inasmuch as it seems to be caused by a low birth rate, which as a general rule (deducible from the recent Census takings in many countries) goes hand-in-hand with high wages and the spread of education. In the Province of Ontario the average family has decreased in size during 20 years, having been in 1871 composed of 5·54 persons; in 1881 of 5·24 persons and in 1891 of 5·10 persons. Had the average family of 1891 been as large as that of 1871 there would have been over 182,000 more of a population in the Province than there is.

In conclusion, I may state that the Canadian Census being a *nominal* one, that is a Census by names, every person's name being entered—opportunity is given for a close scrutiny of the schedules for the detection of duplication of names. It was part of the Commissioner's work in each census district to go over the lists with this object in view; the danger of this kind of duplication arising chiefly in cities where the enumerator in one ward would take a family before it moved to a second, in which latter it might again be taken by another enumerator. In addition to the care enjoined upon the Commissioners the Department itself has scrutinized the returns carefully, the determination being to get to the "rock bottom facts" as regards the population.

It is gratifying to be able to state that Enumerators and Commissioners did their duty so well that comparatively few duplications were discovered in the Census office.

GEORGE JOHNSON,

Statistician.

RECENSEMENT DU CANADA, 1891.

BULLETIN N^o. 2.

DÉPARTEMENT DE L'AGRICULTURE,

OTTAWA, octobre 1891.

Le "Bulletin" No. 2 se rapporte à la population des sous-districts de la province d'Ontario. La population de ces sous-districts est donnée d'après les divisions électorales, déterminées par l'"Acte de Redistribution" de 1882.

Pour établir une comparaison ; les rapports de 1880 et 1881 ont été réajustés dans les cas où les limites d'un district électoral ont été changées, de ce qu'elles étaient lors des recensements antérieurs.

Dans les cités, où les divisions électorales ne correspondent pas avec les limites municipales, le chiffre de la population comprise dans chacune de ces divisions est donné.

Dans les cas où de nouvelles subdivisions ont été créées depuis 1881, affectant le chiffre approximatif de la population, le fait est mentionné de façon à ce qu'en ajoutant la population du nouveau sous-district à celui de l'ancien dont il faisait partie, on peut établir un rapprochement exact.

Afin de faciliter un terme de comparaison, la population a été placée par groupes de comtés, disposés géographiquement, comme par exemple : le groupe du Lac Ontario, qui comprends les comtés limitrophes du Lac Ontario.

Parmi les 50 comtés ainsi formés par groupes, 29 font voir une augmentation dans la population, et 21 un décroissement.

En établissant une comparaison avec l'Etat de New-York, la moyenne de la décroissance dans la totalité des comtés est comme suit : Ontario, 43·7, New-York, 38·3 ; ce qui indique clairement que les mêmes causes ont produit les mêmes effets dans les deux cas.

La diminution de la population dans Ontario, est en partie due aux causes suivantes, savoir :

1° La différence dans le mode de dénombrement.

2° Le déplacement de la population le long des frontières, que l'on constate dans toute contrée civilisée, savoir : (a) le courant de la population se dirigeant de l'ouest vers les régions incultes, et (b) des contrées rurales vers les cités et les villes.

3° L'introduction des instruments agricoles qui remplacent jusqu'à un certain point la main-d'œuvre.

4° Le déboisement des forêts.

5° Les débouchés dans les nouveaux territoires, ouverts par les chemins de fer.

6° Le développement des terrains miniers.

1° En ce qui concerne la première cause, on peut mentionner que les règles établies pour prévenir la double énumération des absents, ont été beaucoup plus sévères pour 1891, que dans les recensements antérieurs. Car on n'a pas encore trouvé un système de recensement qui soit absolument exact jusqu'à présent. Le système "*De Facto*" tel que suivi en Angleterre, donne des résultats qui ne doivent pas être *véridiques* pour ce qui concerne les populations flottantes des villes, qui augmentent d'une façon anormale au détriment des districts ruraux ; on ne saurait éviter cette inexactitude. Les dangers qu'il y a à craindre dans le système "*de jure*" (celui qui est aussi mis en usage en Canada), sont les deux précités. Pour empêcher une fausse énumération des absents, on a fixé pour la première fois, dans le présent recensement, une durée d'absence.

L'application de ce changement a obligé les énumérateurs à ne compter que les personnes, qui n'étaient que temporairement absentes du Canada ou des Provinces. Le recensement de 1881 donnait trop de latitude pour le terme d'absence, et beaucoup d'individus ont été énumérés qui avaient laissé le pays depuis plusieurs années.

Quand à ce qui concerne la classe nombreuse désignée sous le terme de "serviteurs," commis et autres, une énumération double considérable a été faite en 1881 ; les domestiques, commis et autres, ayant été comptés dans les cités et villes où ils étaient employés,

ainsi que dans les districts ruraux, où demeuraient leurs familles. L'idée première du système "*de jure*" est basé sur le domicile. On doit considérer comme ayant laissé pour de bon la maison paternelle, le jeune homme qui va s'établir, ou la jeune fille qui la laisse pour s'engager comme servante ; dans ce cas il faut considérer qu'ils ont laissé le domicile pour toujours. Dans le recensement actuel, on a appliqué ce système, et par là on a évité la double énumération, et toutes ces différentes classes de personnes ont été énumérées là où elles étaient employées, excepté celles qui ne l'étaient que temporairement.

2° La seconde cause de décroissement, affecte non seulement les districts ruraux d'Ontario, et autres parties du Canada, mais dans une même proportion les autres pays.

Dans les Etats de Maine, Massachusetts, Vermont et New-York, l'augmentation de l'élément urbain est plus considérable que l'augmentation entière de la population ; de sorte que, dans ces états la population rurale a diminué en nombre. La population rurale de l'Etat de New-York était en 1880, de 49.02 pour cent sur la totalité ; en 1890, elle était de 49.50 pour cent.

Dans Ontario, il y a un double mouvement de migration, celui des cultivateurs riches qui se dirigent vers les villes et celui des jeunes gens, qui, voulant faire leur chemin dans le monde, s'en vont dans les endroits où ils peuvent obtenir des terres à bon marché. Ce double mouvement de migration—l'un du côté du Nord-Ouest, l'autre vers le sud—a eu pour résultat d'affecter l'état de la population dans les centres et particulièrement dans les comtés où le sol est meilleur et où les terres atteignent en conséquence le plus haut prix ; les cultivateurs d'un certain âge, craignant une diminution dans la valeur de leurs propriétés, et étant consentants à vendre, et les jeunes gens, s'en allant à la recherche de terres à meilleur marché.

3. Les effets de la troisième cause ont été préjudiciables à la population rurale, à un très-haut degré ; l'alliance des cultivateurs entre eux, réduisant ainsi la main-d'œuvre, ce qui fait que dans un recensement, ce sont les têtes qui comptent, et non les moulins à battre.

4. La 4^{me} cause affecte les localités ou les hommes employés aux scieries, et les hommes de chantier, etc., ont laissé des régions boisées et maintenant dépourvues de leur richesse forestière.

5. L'ouverture d'au-delà de 6,000 milles de chemins de fer, dans la dernière période décennale, a eu pour résultat d'attirer vers les centres, les populations des districts éloignés en procurant aux jeunes gens une nouvelle carrière ainsi que des moyens faciles et peu coûteux d'émigrer.

6. La population des régions minières d'Algoma et du Lac Nipissingue s'est accrue d'au-delà de 111 par cent ; la population de 1881 étant de 25,974, et celle de 1891 de 54,879 ; on verra que la majeure partie de cette population est née dans la province d'Ontario.

Outre ces causes, il y a indubitablement celle de la stagnation, que l'on observe en France, dans une partie de la Belgique, en Ecosse, un peu dans l'Angleterre, et dans certains districts des Etats-Unis.

Dans cette partie de l'Amérique, malgré l'arrivée de 5½ millions d'immigrants d'Europe, l'augmentation dans la population pour les années 1880-1890 a diminué, proportion gardée pour les dix dernières années. Les résultats donnés étant de 24.86 pour cent pour 1880-1890 et de 30.08 pour cent pour 1870-1880.

Le Canada ne peut pas espérer d'échapper tout à fait à ce courant. D'autant plus qu'il semble avoir été causé par une moyenne de naissance comparativement basse, laquelle, comme règle générale, est à déduire du recensement actuel dans plusieurs pays, mais qui s'accroît avec l'augmentation des gages et le progrès de l'éducation.

Dans la province d'Ontario, les familles en général ont diminué en nombre durant les vingt dernières années, chaque famille étant composée en 1871 de 5.54 personnes, en 1881 de 5.24, et de 5.10 en 1891. Si le nombre de familles en 1891 eût augmenté en proportion de celles de 1871, il y aurait eu une augmentation de 182,000 âmes de plus qu'il n'y a présentement.

Comme conclusion, je puis établir que le recensement du Canada, étant nominal, (chaque personne étant entrée sous son propre nom), on a la facilité de constater, par un examen judicieux des cédulas la découverte d'une double énumération de noms.

C'était le devoir des commissaires de chaque district, de reviser les listes pour arriver à ce résultat.

Le danger de cette sorte de double énumération existait principalement dans les villes, où un énumérateur, dans un quartier, enregistrerait une famille avant que cette dernière eût laissé ce quartier, pour aller résider dans un autre, où elle était enregistrée de nouveau par l'énumérateur de ce quartier.

En outre des instructions données aux commissaires, le département a soigneusement examiné les retours. L'intention étant d'aller au fond des choses afin de s'assurer de l'exactitude des faits, relativement à la population.

Il est satisfaisant de constater que les énumérateurs et les commissaires ont tellement bien rempli leur charge, qu'il y a eu très peu de double énumération de découvertes au bureau du recensement.

GEO. JOHNSON.

Statisticien.

CENSUS OF CANADA.

POPULATION OF ONTARIO

BY GROUPS OF COUNTIES.

COUNTIES.	1871.	1881.	1891.	1881 compared with 1871.	1891 compared with 1881.
GROUP 1—LAKE ERIE.					
Essex	32,697	46,962	55,545	14,265	8,583
Kent	21,800	29,194	31,434	7,394	2,240
Elgin	39,220	49,228	50,659	10,008	1,431
Norfolk	36,598	39,952	37,180	3,354	-2,772
Haldimand	18,070	17,660	16,318	-410	-1,342
Monck	14,985	15,940	15,315	955	-625
Welland	20,572	26,152	25,131	5,580	-1,021
Group	183,942	225,088	231,582	41,146	6,594
*Percentage	+22.36	+2.93
GROUP 2—LAKE HURON.					
Bothwell	15,722	22,477	25,595	6,755	3,118
Lambton	31,994	42,615	47,718	10,621	5,103
Huron	57,985	67,223	58,172	9,238	-9,051
Bruce	48,515	65,218	64,604	16,703	-614
Group	154,216	197,533	196,089	43,317	-1,444
*Percentage	+28.08	-0.78
GROUP 3 - GEORGIAN BAY.					
Grey	59,395	74,371	76,238	14,976	1,867
Simcoe	54,330	76,026	84,834	21,696	8,808
Group	113,725	150,397	161,072	36,672	10,675
*Percentage	+32.28	+7.09
GROUP 4—WEST, CENTRAL ONTARIO.					
Middlesex	91,405	104,500	103,039	13,095	-1,461
Oxford	47,921	49,168	48,552	1,247	-616
Brant	37,015	38,127	40,352	1,112	2,225
Perth	41,513	48,146	46,311	6,633	-1,835
Wellington.....	66,870	78,240	72,742	11,370	-5,498
Cardwell.....	16,500	16,770	15,382	270	-1,388
Waterloo	40,251	42,740	50,473	2,489	7,733
Group	341,475	377,691	376,851	36,216	-840
*Percentage	+10.60	-0.22

POPULATION OF ONTARIO BY GROUPS OF COUNTIES—*Concluded.*

COUNTIES.	1871.	1881.	1891.	1881 compared with 1871.	1891 compared with 1881.
GROUP 5—LAKE ONTARIO.					
Lincoln and Niagara.....	21,242	23,300	21,806	2,058	-1,494
Wentworth.....	57,883	67,498	78,613	9,615	11,115
Halton.....	22,606	21,919	21,986	- 687	67
Peel.....	16,369	16,387	15,472	18	- 915
York.....	113,366	149,882	241,327	36,516	91,445
Ontario.....	54,892	61,714	58,543	6,822	-3,171
Durham.....	37,380	36,265	32,428	-1,115	-3,837
Northumberland.....	39,086	39,975	36,948	889	-3,027
Prince Edward.....	20,336	21,044	18,892	708	-2,152
Group.....	383,160	437,984	526,015	54,824	88,031
*Percentage.....	+14.30	+20.09
GROUP 6—RIVERS ST. LAWRENCE AND OTTAWA.					
Lennox.....	16,396	16,314	14,902	- 82	-1,412
Addington.....	21,312	23,470	24,151	2,158	681
Frontenac.....	28,717	29,084	32,709	367	3,625
Leeds and Grenville.....	45,723	48,155	48,905	2,432	750
Brockville.....	13,345	15,107	15,855	1,762	748
Dundas.....	18,777	20,598	20,132	1,821	- 466
Cornwall and Stormont.....	18,987	23,198	27,158	4,211	3,960
Glengarry.....	20,524	22,221	22,447	1,697	226
Prescott.....	17,647	22,857	24,173	5,210	1,316
Russell.....	18,344	25,082	31,643	6,738	6,561
Carleton.....	37,325	46,189	59,030	8,964	12,841
Lenark.....	37,929	37,800	39,129	- 129	1,329
Renfrew.....	27,977	38,166	46,977	10,189	8,811
Group.....	322,903	368,241	407,211	45,338	38,970
*Percentage.....	+14.04	+10.58
GROUP 7—EAST CENTRAL					
Victoria.....	31,568	37,474	37,304	5,906	- 170
Peterborough.....	29,105	33,712	37,728	4,607	4,016
Hastings.....	48,364	55,192	59,229	6,828	4,037
Group.....	109,037	126,378	134,261	17,341	7,883
*Percentage.....	+15.90	+6.24
GROUP 8—NORTHERN.					
Muskoka.....	3,584	17,636	26,515	14,052	8,879
Algoma.....	7,018	24,015	41,856	16,997	17,841
Nipissing.....	1,791	1,959	13,023	168	11,064
Group.....	12,393	43,610	81,394	31,217	37,784
*Percentage.....	+251.89	+86.64

*The percentage in the 1881 column shows the variation in 1881 as compared with 1871. The percentage in the 1891 column shows variation in 1891 as compared with 1881.

CENSUS OF CANADA, 1891.

RECENSEMENT DU CANADA, 1891.

POPULATION BY SUB-DISTRICTS.

POPULATION PAR SOUS-DISTRICTS.

Where not otherwise stated the minor civil division is the township.

	1871.	1881.	1891.
ONTARIO.	1,620,851	1,962,922	2,114,475 ³²¹
<i>Addington, District No. 45.</i>	21,312	23,470	24,151
Abinger, Effingham, Ashby and Deubigh.....	325	621	870
Barrie	316	486	670
Bedford	1,839	2,019	1,837
Camden	5,792	5,134	4,745
Clarendon and Miller.....	408	685	929
Hinchinbrooke.....	997	1,322	1,465
Kaladar and Anglesea.....	749	990	1,232
Kennebec.....	802	1,149	1,428
Loughborough.....	2,325	2,394	2,218
Newburg Village.....	828	834	648
Olden.....	560	829	1,002
Oso.....	492	959	1,176
Palmerston and Canoto.....	546	1,005	1,064
Portland.....	2,718	2,452	2,512
Sheffield	2,615	2,591	2,355
<i>Algoma, District No. 46.</i>	7,018	24,014	41,856
<i>(Eastern Division.)</i>			
Algoma Mills.....			620
Bruce Mines.....			750
Day.....			834
Echo River.....			499
Garden River.....			606
Goulais Bay.....			239
Grande Pointe.....			137
Hallam and Graham.....			702
Hilton			389
Killarney.....			504 ¹
Kirkwood.....			185
Mamainse.....			104
Michipicoton			115
Mississauga.....			789
Otter Tail.....			873
Port Findlay.....			794 ⁵
Root River and Korah.....			591
Sault St. Marie, town.....			2,414
Spanish River.....			1,400
St. Joseph.....			367
Tenby Bay.....			364 ⁹
Thessalon.....			1,160
Unorganized territory (estimated).....			1,200

POPULATION BY SUB-DISTRICTS.

	1871.	1881.	1891.
<i>(Western Division.)</i>			
Beaver and Silver Mountain.....			685
Biscotasing, Chapleau, Missanabi, White River, Peninsula and Schreiber.....			2,280
Chelmsford and Cartier.....			755
Fort Francis.....			1,339
Hawk Lake.....			17
Keewatin North.....			572
Keewatin South.....			844
Murillo.....			427
Neebing Centre and South.....			1,118
Neebing North.....			1,057-8
Nipigon and Pays Plat.....			909
Norman.....			727-9
Port Arthur, town.....			2,698
Rainy River.....			871
Rat Portage East.....			1,091
Rat Portage West.....			715
Savanne, Ignace, Barclay and Vermillion.....			1,019
<i>(Manitoulin Islands Division.)</i>			
Allan.....			317
Assignack.....			819-8
Barry Island.....			209
Bidwell.....			457
Billings.....			635
Burpee.....			186
Campbell.....			547
Carnavon.....			500
Cockburn Island.....			240
Dawson.....			113
Duck Islands.....			83
Gordon.....			455
Gore Bay town.....			472
Howland.....			1,254-5
Mills.....			189
Robinson.....			317
Sandfield.....			281
Sheguiandah.....			421-3
Tehkummah.....			405
Wookwamakong.....			1,191
<i>Bothwell, District No. 47.</i>			
	15,722	22,477	25,595-3
Bothwell, town.....	995	965	1,897
Camden.....	4,095	3,239	2,998-1
Chatham.....	5,036	5,907	6,150
Dawn.....	1,116	2,026	3,480
Dresden, town.....		1,979	2,058
Sombra.....	3,397	4,601	4,207
Thamesville, village.....		740	798
Wallaceburg, village.....		1,525	2,726
Walpole Island (out of Chatham Tp.).....			885
Zone.....	1,083	1,495	1,401

POPULATION BY SUB-DISTRICTS.

	1871.	1881.	1891.
<i>Brant North, District No. 48.</i>	18,332	17,645	16,993
Ancaster.....	5,005	4,726	4,098
Blenheim.....	6,398	5,937	5,606
Brantford East.....	3,461	3,492	4,152
Drumfries South.....	3,468	3,490	3,137
<i>Brant South, District No. 49.</i>	18,683	20,482	23,359
Brantford West.....	3,406	3,063	2,802
Brantford city.....	8,107	9,616	12,753
Onondaga.....	1,924	1,739	1,482
Paris, town.....	2,640	3,173	3,094
Tuscarora.....	2,606	2,891	3,228
<i>Brockville, District No. 50.</i>	13,345	15,107	15,855-3
Centre ward.....	1,912	1,307	1,455
East ward.....	1,483	1,707	2,062-0
North ward.....		1,683	1,766
South ward.....		1,109	1,179
West ward.....	1,707	1,803	2,331
Total Brockville City.....	(5,102)	(7,609)	(8,799) /
Elizabethtown.....	5,373	4,905	4,726
Kitley.....	2,870	2,593	2,336
<i>Bruce East, District No. 51.</i>	17,819	22,355	21,355
Brant (Walkerton included in 1871).....	5,994	5,423	*4,929
Carrick.....	5,005	5,909	5,503
Cullross (Teeswater included in 1871).....	3,839	3,807	3,345
Greenock.....	2,981	3,751	3,389
Teeswater, village (out of Cullross).....		861	1,128
Walkerton, town (out of Brant Tp.).....		2,604	3,061
<i>Bruce North, District No. 52.</i>	10,840	18,645	22,530
Albemarle township and Cape Croker Indian Reserve.....		1,505	1,819
Amabel township and Saugeen Indian Reserve.....	1,804	3,046	3,890
Arran.....	3,780	3,512	2,913
Chesley, village (out of Elderslie).....		893	1,437
Eastnor, Lindsay and St. Edmunds.....	698	1,364	2,321
Elderslie.....	3,699	3,273	3,048-4
Paisley, village (out of Elderslie).....		1,154	1,328
Port Elgin, village (out of Saugeen).....		1,400	1,659
Southampton, village.....	858	1,141	1,437
Tara, village (out of Arran).....		561	695
Warton village (out of Amabel).....		796	1,984

* Including 285 in Hanover village, the population of which is 1,375. (See Bentinck, District 69.)

POPULATION BY SUB-DISTRICTS.

	1871.	1881.	1891.
<i>Bruce West, District No. 53.</i>			
Bruce West, District No. 53.....	19,856	24,218	20,718
Bruce.....	3,764	4,236	3,793
Huron.....	4,079	5,175	4,125
Kincardine.....	4,097	4,506	3,618
Kincardine, town.....	1,907	2,876	2,631
Kinloss.....	3,430	3,628	2,903
Lucknow, village (out of Kinloss).....		1,162	1,285
Saugeen.....	2,579	2,090	1,813
Tiverton, village (out of Kincardine).....		545	550
<i>Cardwell, District No. 54.</i>			
Cardwell, District No. 54.....	16,500	16,770	15,382
Adjala.....	2,878	2,885	2,459
Albion.....	4,857	3,872	3,142
Bolton, village (out of Albion).....		606	743
Caledon.....	4,785	5,310	5,520
Mono.....	3,980	4,097	3,518
<i>Carleton, District No. 55.</i>			
Carleton, District No. 55.....	15,680	18,777	21,749 ⁶
Goulburn.....	3,234	3,381	2,784
March.....	1,347	1,318	1,264
Marlborough.....	2,260	2,090	1,703
Nepean.....	5,069	8,044	11,405 ¹
North Gower.....	2,532	2,481	2,382 ³
Ottawa East, village (out of Nepean Tp.).....			741
Richmond, village.....	487	439	447
Torbolton.....	751	1,024	1,023
<i>Cornwall and Stormont, District No. 56.</i>			
Cornwall and Stormont, District No. 56.....	18,987	23,198	27,158 ⁶
Cornwall Tp.....	5,081	4,436	6,792 ⁰
Centre ward of Cornwall, town.....	1,086	1,693	2,117 ⁶
East ward of Cornwall, town.....	490	1,304	2,292
West ward of Cornwall, town.....	457	1,471	2,396 ⁵
Total Cornwall Town.....	(2,033)	(4,468)	(6,805)
Finch.....	2,729	3,493	3,509
Osnabruk.....	5,791	5,796	5,317 ⁶
Roxborough.....	3,353	4,005	4,735 ⁶
<i>Dundas, District No. 57.</i>			
Dundas, District No. 57.....	18,777	20,598	20,132
Chesterville, village (out of Winchester).....			775
Iroquois, village.....	781	1,001	1,047
Matilda.....	4,767	4,692	4,138
Morrisburg, village.....	1,156	1,719	1,859
Mountain.....	3,259	3,719	3,422
Williamsburg.....	4,724	4,671	4,308
Winchester.....	4,090	4,796	3,621
Winchester, village (out of Winchester).....			962

POPULATION BY SUB-DISTRICTS.

	1871.	1881.	1891.
<i>Durham East, District No. 58.</i>			
	19,064	18,710	17,053
Cavan.....	4,761	3,479	3,106
Hope.....	5,075	4,522	3,887
Manvers.....	4,114	3,976	4,047
Millbrook, village (out of Cavan).....		1,148	971
Port Hope, town.....	5,114	5,585	5,042
<i>Durham West, District No. 59.</i>			
	18,316	17,555	15,376 ⁴ / ₄
Bowmanville, town.....	3,044	3,504	3,377
Cartwright.....	2,514	2,357	2,026
Clarke.....	5,728	5,169	4,427
Darlington.....	5,931	5,465	4,756 ⁹ / ₉
Newcastle, village.....	1,109	1,060	787
<i>Elgin East, District No. 60.</i>			
	18,799	25,748	26,724 ² / ₂
Aylmer, town (out of Malahide).....		1,540	2,167 ⁶ / ₆
Bayham.....	4,892	4,649	3,853 ⁶ / ₆
Malahide.....	5,554	4,415	3,851
Port Stanley, village (out of Southwold).....		674	616
St. Thomas, city.....	2,197	8,367	10,376 ⁶⁶ / ₆₆
Vienna, village.....	593	528	398
Yarmouth.....	5,563	5,575	5,474 ¹ / ₁
<i>Elgin West, District No. 61.</i>			
	20,421	23,480	23,925
Aldborough.....	3,506	4,718	5,299
Dunwich.....	3,731	4,290	3,663
Dutton, village (out of Dunwich).....			838
Howard.....	4,512	3,962	3,626
Orford.....	3,113	3,766	3,479
Ridge-town, town (out of Howard).....		1,538	2,254
Southwold.....	5,559	5,206	4,766
<i>Essex North, District No. 62.</i>			
	17,988	25,659	31,523
Belle River, village (out of Rochester).....		556	657
Maidstone.....	2,055	3,260	3,127
Rochester.....	2,152	2,483	2,806
Sandwich East.....	3,748	4,386	4,378
Sandwich West.....	2,228	2,860	2,643
Sandwich town.....	1,160	1,143	1,352
Tilbury West.....	2,392	4,410	5,100
Tilbury Centre (out of Tilbury West).....			205
Walkerville (out of Sandwich East).....			933
Windsor, town.....	4,253	6,561	10,322

POPULATION BY SUB-DISTRICTS.

	1871.	1881.	1891.
<i>Essex, South, District No. 63.</i>			
Amherstburg town.....	1,936	2,672	2,279
Anderdon	1,895	2,406	2,205
Colchester North (with Col. S., in '71).....	2,920	2,090	1,720
Colchester South (with Col. N in '71).....	2,727	2,827	2,827
Essex Centre village (out of Colchester).....	800	800	1,709
Gosfield	2,994	3,494	4,071
Kingsville village (out of Gosfield)	863	863	1,335
Leamington village (out of Mersea)	1,411	1,411	1,910
Malden.....	1,566	1,727	1,573
Mersea	3,248	3,552	3,788
Pelee Island.....	150	361	605
<i>Frontenac, District No. 64.</i>			
Garden Island, village.....	762	495	412
Howe Island (Pittsburg included, in '71).....	479	479	422
Kingston township	4,101	3,739	3,349
Pittsburg (Howe Island included in '71).....	4,126	3,352	3,000
Portsmouth, village.....	1,702	1,734	1,974
Storrington	2,882	2,811	2,285
Wolfe Island	2,737	2,383	2,003
<i>Glengarry, District No. 65.</i>			
Alexandria, village (out of Lochiel).....	1,200	1,200	1,614
Charlottenburg.....	6,331	6,354	5,657
Kenyon	4,951	5,491	5,376
Lancaster.....	4,415	4,851	4,084
Lancaster, village (out of Lancaster Tp.).....	700	700	700
Lochiel	4,827	4,291	5,016
<i>Grenville South, District No. 66.</i>			
Augusta	5,163	5,096	4,535 ⁴
Cardinal, village (out of Edwardsburg)	960	960	960 ⁵⁹
Edwardsburg.....	5,417	5,431	4,517
Prescott, town	2,617	2,999	2,919
<i>Grey East, District No. 67.</i>			
Collingwood	3,576	4,915	3,932
Dundalk, village (out of Proton)	696	696	696
Euphrasia	2,899	3,688	3,567
McAford, town (out of St. Vincent).....	1,866	1,866	1,999
Melancthon.....	2,043	3,099	3,822
Osprey	3,033	3,512	3,314
Proton	2,184	3,402	3,297
St. Vincent.....	4,974	4,119	3,494
Shelburne, village (out of Melancthon)	733	733	1,202
Thornbury town (out of Collingwood)	902	902	902

POPULATION BY SUB-DISTRICTS.

	1871.	1881.	1891.
<i>Grey North, District No. 68.</i>			
	18,580	23,334	26,341
Derby	1,946	2,363	2,200
Holland	3,249	3,688	3,622
Keppel	2,174	3,449	3,774
Owen Sound, town (inc. Brock village in '81 & '91)	3,369	4,759	7,497
Sarawack	680	639	1,201
Sullivan	3,151	4,143	4,164
Sydenham	4,011	4,293	3,903
<i>Grey South, District No. 69.</i>			
	22,106	25,703	23,672
Artemesia	3,484	4,576	4,092
Bentinck (including 1,090 in Hanover village)....	5,050	5,472	5,323
Durham, town (out of Bentinck).....		1,059	1,273
Egremont.....	3,949	4,455	3,904
Glenelg.....	4,060	4,001	3,318
Markdale, village (out of Glenelg).....			756
Normanby.....	5,563	6,140	5,006
<i>Haldimand, District No. 70.</i>			
	18,070	17,660	16,318-07
Caledonia, village.....	1,246	1,252	963
Cayuga North.....	2,012	2,109	1,894-3
Cayuga, village.....	803	830	322
Hagersville, village (out of Walpole).....			1,068-1
On-ida.....	3,185	2,863	2,403-0
Rainham.....	2,067	2,217	2,010
Seneca.....	3,282	2,545	2,231
Walpole.....	5,477	5,854	4,922
<i>Halton, District No. 71.</i>			
	22,606	21,919	21,986-2
Acton, village (out of Esquesing).....		818	1,209
Burlington, village (out of Nelson).....		1,068	1,335-26
Esquesing.....	6,139	4,998	4,435
Georgetown, village.....	1,282	1,471	1,509
Milton, town.....	891	1,302	1,450
Nasagaweya.....	2,964	2,800	2,809
Nelson.....	4,619	3,340	3,269
Oakville, town.....	1,684	1,710	1,825-3
Trafalgar.....	5,027	4,382	4,155-3
<i>Hamilton City, District No. 72.</i>			
	26,716	35,961	47,252-45
Ward One.....		3,315	4,407
Ward Two.....		4,141	4,331
Ward Three.....		5,089	7,518-2
Ward Four.....		5,950	7,726
Ward Five.....		6,068	6,605
Ward Six.....		6,035	7,290-89
Ward Seven.....		5,363	9,375
Total Hamilton City, Municipal.....	(26,716)	(35,961)	(48,980)

POPULATION BY SUB-DISTRICTS.

	1872.	1881.	1891.
<i>Hastings East, District No. 73.</i>	17,392	17,313	18,059-0
Descronto, village (out of Tyendinaga).....		1,670	3,338
Hungerford.....	4,633	4,559	4,762-0
Thurlow.....	5,186	4,922	4,817
Tyendinaga.....	7,573	6,162	5,136-5
<i>Hastings North, District No. 74.</i>	16,607	20,479	22,213
Bangor, McClure & Wicklow.....	930	855	1,026
Carlow (including Mayo in '71 and '81).....	285	935	569
Dungannon (including Faraday in '71).....	446	578	754
Elzevir and Grimsthorpe.....	1,393	1,514	1,506
Faraday, in Dungannon in '71.....		392	705
Huntingdon.....	2,853	2,555	2,562
Limerick.....	1,055	561	508
Madoc.....	3,479	3,182	2,967
Madoc, village (out of Madoc Tp.).....		1,065	1,134
Marmora and Lake.....	1,699	2,084	2,176
Mayo.....			518
Monteagle and Herschell.....		1,072	1,552
Rawdon.....	3,688	3,692	3,629
Sabine, Airey, Lyell, Murchison and Robinson.....		131	143
Stirling, village.....	779	874	850
Tudor and Cashell.....		564	843
Wollaston.....		423	771
<i>Hastings West, District No. 75.</i>	14,365	17,400	18,963-2
Belleville, city.....	7,305	9,516	9,914-6
Frankford, village (out of Sydney).....			533
Sydney.....	5,264	4,882	4,152
Trenton, town.....	1,796	3,042	4,364-2
<i>Huron East, District No. 76.</i>	16,425	21,720	18,968
Blyth, village (out of Morris).....		914	927
Brussels, village (out of Grey).....		1,280	1,204
Grey.....	3,855	4,577	4,022
Howick.....	5,417	5,616	4,439
Morris.....	3,952	3,815	3,253
Turnberry.....	3,201	3,010	2,452
Wingham, town (out of Turnberry).....		1,918	2,167
Wroxeter, village (out of Howick).....		590	504
<i>Huron South, District No. 77.</i>	20,254	21,991	19,184
Bayfield, village (out of Stanley).....		679	595
Hav.....	3,897	4,421	4,244
Hullett.....	3,678	3,875	3,281
McKillop.....	3,808	4,046	3,086
Seaforth, town.....	1,368	2,480	2,641
Stanley.....	3,804	2,940	2,470
Tuckersmith.....	3,699	3,550	2,867

POPULATION BY SUB-DISTRICTS.

	1871.	1881.	1891.
<i>Huron West, District No. 78.</i>			
	21,306	23,512	20,020-1
Ashfield.....	3,893	4,766	4,010
Clinton, town.....	2,016	2,606	2,635
Colborne.....	2,429	2,663	2,215
East Wawanosh.....	2,651	2,674	2,078
Goderich.....	3,615	3,444	2,907
Goderich, town.....	3,954	4,564	3,839
West Wawanosh.....	2,748	2,795	2,336-4
<i>Kent, District No. 79.</i>			
	21,800	29,194	31,434
Blenheim, town (out of Harwick).....		1,212	1,708
Chatham, town.....	5,873	7,873	9,052
Dover.....	3,315	4,447	4,415
Harwick.....	5,974	6,410	6,017
Raleigh.....	4,081	5,298	4,955
Romney.....	711	1,082	1,534
Tilbury Centre, village (out of Tilbury East).....			720
Tilbury East.....	1,846	2,892	3,033
<i>Kingston City, District No. 80.</i>			
	12,407	14,091	19,264-3
Catarqui ward.....	2,036	2,301	3,589
Frontenac ward.....	2,514	2,847	4,368
Ontario Ward.....	1,262	1,225	1,265
Rideau ward.....	2,066	2,788	4,465-4
St. Lawrence ward.....	862	933	836
Sydenham ward.....	1,944	1,950	2,174
Victoria ward.....	1,723	2,047	2,567
<i>Lambton East, District No. 81.</i>			
	16,370	21,725	24,269
Alvinston, village (out of Brooke).....		830	1,006
Arkona, village (out of Bosanquet).....		569	463
Bosanquet.....	4,425	3,360	2,866
Brooke.....	2,538	3,492	3,874
Enniskillen.....	1,528	3,588	5,006
Oil Springs, village.....	551	552	1,138
Petrolia, town.....	2,651	3,465	4,357
Theford, village (out of Bosanquet).....		685	616
Warwick.....	4,677	4,052	3,644
Watford, village (out of Warwick).....		1,132	1,299
<i>Lambton West, District No. 82.</i>			
	15,624	20,890	23,449-6
Forest, town (out of Plympton).....		1,614	2,057
Moore.....	3,998	5,146	5,080-79
Plympton.....	5,259	4,495	3,929
Point Edwards, village (out of Sarnia).....		1,293	1,882-1
Sarnia.....	3,438	3,583	2,937
Sarnia, town.....	2,929	3,874	6,693-2
Wyoming, village (out of Plympton).....		886	871

POPULATION BY SUB-DISTRICTS.

	1871.	1881.	1891.
<i>Lanark North, District No. 83.</i>	19,889	19,855	19,265-0
Almonte, town.....	2,080	2,684	3,072-68
Dalhousie and Sherbrooke North.....	2,295	2,528	2,142
Darling.....	801	767	739
Fitzroy.....	3,425	3,378	2,940
Huntley.....	2,634	2,534	2,322-1
Lanark.....	2,270	2,029	1,904
Lanark, village.....	740	752	859
Lavant (included in Dalhousie in '71 and '81).....	680-79
Pakenham.....	2,426	2,284	2,006-4
Ramsay.....	3,218	2,899	2,602-1
<i>Lanark South, District No. 84.</i>	18,040	17,945	19,864-2
Bathurst.....	3,220	2,960	2,758-4
Beckwith.....	1,977	1,928	1,767-6
Burgess North.....	1,358	1,277	1,117
Carleton Place, village.....	1,205	1,975	4,435
Drummond.....	2,467	2,378	2,202
Elmsley.....	1,418	1,319	1,233
Montague.....	3,187	2,683	2,232
Perth, town.....	2,375	2,467	3,136
Sherbrooke South.....	833	948	984
<i>Leeds and Grenville North, District No. 85.</i>	11,810	12,423	13,523-8
Elmsley, South.....	1,241	1,121	977
Gower, South.....	1,023	1,022	960
Kemptville, village.....	872	1,188	1,226
Merrickville, village.....	923	819	1,072
Oxford.....	4,051	3,785	3,309-4
Smith's Falls, town.....	1,150	2,087	3,864
Wolford.....	2,550	2,401	2,115
<i>Leeds South, District No. 86.</i>	20,716	22,206	22,451-49
Athens Village (from Yonge rear).....	905-4
Bastard and Burgess South.....	3,540	3,500	3,319
Crosby North.....	2,127	1,999	2,097
Crosby South.....	2,094	1,968	1,849
Gananoque, town.....	2,020	2,871	3,669
Lansdowne and Leeds (fronts).....	3,760	3,587	3,387
Lansdowne and Leeds (rears).....	2,363	2,653	2,493-2
Newboro, village (out of Crosby North).....	418	462
Yonge and Escott (fronts).....	3,061	3,107	2,857
Yonge and Escott (rears).....	1,791	2,103	1,413
<i>Lennox, District No. 87.</i>	16,396	16,314	14,902-0
Adolphustown.....	756	737	720
Amherst Island.....	1,189	1,089	938

POPULATION BY SUB-DISTRICTS.

	1871.	1881.	1891.
<i>Lennox, District No. 87.—(Concluded.)</i>			
Bath, village	601	546	530
Ernestown	4,233	3,961	3,597
Fredericksburg North	1,722	1,720	1,659
Fredericksburg South	1,497	1,340	1,265
Napanee, town	2,967	3,680	3,434
Richmond	3,431	3,241	2,898
<i>Lincoln and Niagara, District No. 88.</i>			
	21,242	23,300	21,806
Beamsville, village (out of Clinton)		685	911
Clinton	2,782	2,399	2,137
Grantham	3,929	2,218	1,928
Louth	1,893	1,995	1,774
Merrittton, village (out of Grantham)		1,798	1,813
Niagara	2,093	2,004	1,45
Niagara, town	1,600	1,441	1,349
Port Dalhousie, village	1,081	1,129	879
St. Catharines city	7,864	9,631	9,170
<i>London City, District No. 89.</i>			
	15,826	19,746	22,281
Ward 1			4,471
Ward 2			5,204
Ward 3			6,332
Ward 4			6,274
Total London, Municipal	15,826	26,266	31,977
<i>Middlesex East, District No. 90.</i>			
	20,740	25,107	25,569
Dorchester North	4,117	4,056	3,752
Dorchester South	2,071	1,844	1,624
London, Tp.	10,991	9,599	8,934
London East (out of London Tp.)		3,890	5,610
London West, village (out of London Tp.)		1,701	1,915
Nissouri West	3,561	3,562	3,271
Springfield, village (out of S. Dorchester)		555	463
<i>Middlesex North, District No. 91.</i>			
	19,485	21,268	19,095
Ailsa Craig, village (out of Williams East)		872	739
Biddulph	4,198	2,940	2,600
Exeter, village (out of Stephen)		1,725	1,809
Lucan, village (out of Biddulph)		976	920
McGillivray	4,638	4,178	3,507
Parkhill, town (out of West Williams)		1,539	1,680
Stephen	4,349	4,504	4,271
Williams East	2,853	2,195	1,794
Williams West	3,427	2,339	1,782

POPULATION BY SUB-DISTRICTS.

	1871.	1881.	1891.
<i>Middlesex South, District No. 92.</i>			
	17,448	18,888	18,806
Caradoc	5,065	5,230	4,762
Delaware.....	2,523	2,674	2,549
Lobo.....	3,474	3,092	2,989
Westminster.....	6,386	7,892	8,506
<i>Middlesex West, District No. 93.</i>			
	17,906	19,491	17,288
Adelaide.....	2,909	3,108	2,616
Ekfrid	3,193	3,023	2,876
Euphemia	2,390	2,791	2,523
Glencoe, village (out of Ekfrid).....		801	976
Metcalfe.....	2,449	2,192	1,699
Mosa.....	3,194	2,673	2,450
Newbury, village (out of Mosa).....		546	452
Strathroy, town.....	3,232	3,817	3,316
Wardsville, village.....	539	540	380
<i>Monck, District No. 94.</i>			
	14,985	15,940	15,315
Canboro.....	1,209	1,220	1,118
Cayuga South.....	972	959	925
Dunn.....	1,049	1,040	984
Dunnville, village.....	1,452	1,808	1,776
Gainsborough.....	3,016	3,001	2,683
Moulton.....	2,099	1,799	1,894
Pelham.....	2,515	2,623	2,554
Sherbrooke (with Moulton in 1871).....		494	436
Wainfleet.....	2,673	2,996	2,945
<i>Muskoka and Parry Sound, District No. 95.</i>			
	3,584	17,636	26,515
Armour and Ryerson.....		1,203	2,171
Baxter, Gibson and Freeman.....			700
Bethune, Perry and Proudfoot.....		2,315	1,704
Blair, Brown, Burton, Shawanaga, Harrison, Wallbridge, Mowat and French River.....		521	1,119
Brunel and Stephenson.....	505	1,604	1,728
Chapman and Croft.....	307	777	1,301
Conger, Cowper and Foley.....	40	357	502
Ferguson, Carling and Burpee.....		472	481
Ferrie, Mills, Hardy, Wilson, McConkey and McKenzie.....		277	753
Franklin, Sinclair and Chaffey.....		687	1,776
Gurd, Pringle and Patterson.....		420	842
Himsworth North and South, and Nipissing.....		521	1,832
Humphrey, Watt and Cardwell.....	711	1,114	1,835
Huntsville, village.....		280	1,159
Joly and Strong and Sundridge, village.....		794	1,500
Laurier, Machar and Lount.....		407	1,177
McDougall, Parry Sound, town, and Parry Island	1,439	2,025	2,337
McKellar and Hagerman.....	262	1,056	1,189
Monteith, Spence and Christie.....		594	1,087
Stisted and McMurrich.....	320	1,212	1,372

POPULATION BY SUB-DISTRICTS.

	1871.	1881.	1891.
<i>Nipissing, District No. 95½.</i>	1,791	1,959	13,023-0
Camden, Deacon and Fitzgerald.....			242
Mattawa, village.....			1,437-9
Papineau and Mattawa.....			694
Calvin, Lauder, Ballan'yne, Wilkes, Pentland, Paxton, Biggar, Osler, Lyster and Boyd.....			549
Bonfield, Chisholm, Boulter and Ferris.....			2,249
North Bay, town, Widdifield, Phelps and Orlig...			2,210
Nipissing Indian Reserve, Springer, Field, Bad- gerow and Caldwell.....			1,480
Kirkpatrick, Hugel, Ratter and Dunnett.....			535
Appleby, Hagar, Awrey, Hawley, Dryden, Dill and Neelon.....			155
Blezard, McKim (including Sudbury) and Broder..			2,358-4
Finlayson and Peck.....			204
Unorganized Territory north of Muskoka.....			410
*That part of the district of Nipissing, lying north of the northern boundaries of the townships of Mattawan, and Orlig, etc.....			
*That part of the district extending from the height of land to James' Bay.....			
<i>Norfolk North, District No. 96.</i>	19,372	20,933	19,400
Dereham.....	5,838	4,486	4,025
Middleton.....	3,261	3,514	3,457
Tilsonburg, town (out of Dereham).....		1,939	2,163
Townsend.....	5,474	4,963	4,291
Waterford, village (out of Townsend).....		1,118	1,212
Windham.....	4,799	4,913	4,252
<i>Norfolk South, District No. 97.</i>	17,226	19,019	17,780
Charlotteville.....	4,097	4,416	3,937
Houghton.....	2,118	2,071	2,014
Port Dover, village (out of Woodhouse).....		1,146	1,213
Port Rowan, village (out of Walsingham).....			649
Simcoe, town.....	1,856	2,645	2,674
Walsingham.....	5,290	5,819	4,785
Woodhouse.....	3,865	2,922	2,508
<i>Northumberland East, District No. 98.</i>	21,758	22,991	21,995 22,001
Brighton.....	3,734	3,470	3,017
Brighton, village.....	1,357	1,547	1,479
Campbellford, village (out of Seymour).....		1,418	2,424
Colborne, village.....	823	1,079	1,068
Cramahé.....	3,833	3,481	2,987-95
Hastings, village (part in Peterboro in '71 and '81.		885	812
Murray.....	3,638	3,560	3,306-3
Percy.....	4,084	3,568	3,389-8
Seymour.....	4,289	3,783	3,509

* Not received.

POPULATION BY SUB-DISTRICTS.

	1871.	1881.	1891.
<i>Northumberland West, District No. 99.</i>			
Alnwick.....	1,369	1,471	1,321
Cobourg, town.....	4,442	4,957	4,829
Haldimand.....	5,796	5,401	4,484
Hamilton.....	5,721	5,155	4,313
<i>Ontario North, District No. 100.</i>			
Beaverton, village (out of Thorah).....			850
Bracebridge, village (included in Macauley in 1871 and 1881).....			1,419
Brock.....	5,175	4,378	4,071
Cannington, village (out of Brock).....		922	1,950
Draper.....	521	1,794	1,082
Macauley (including Bracebridge village, in 1871 and 1881).....	868	3,135	760
MacLean (see Ridout).....	238	756	545
Mura.....	2,697	3,237	3,152
Morrison.....	601	816	890
Oakley (in Draper in 1871 and 1881).....			385
Rama.....	704	1,370	1,788 ⁵²
Ridout (with MacLean in 1871 and 1881).....			190
Ryde (in Draper in 1871 and 1881).....			612
Scott.....	2,775	2,563	2,342
Scugog.....	880	768	662
Thorah.....	1,965	2,542	1,623
<i>Ontario South, District No. 101.</i>			
Oshawa, town.....	3,185	3,992	4,065 ⁵
Port Perry, village (out of Reach).....		1,800	1,698
Reach.....	6,809	4,949	4,190
Whitby East.....	3,411	3,417	3,080
Whitby West.....	3,220	2,946	2,551
Whitby town.....	2,732	3,140	2,786
<i>Ontario West, District No. 102.</i>			
Newmarket, town.....	1,760	2,006	2,143
Pickering.....	7,375	6,883	5,998
Stouffville, village (out of Whitechurch).....		866	1,148
Uxbridge.....	4,762	4,081	3,461
Uxbridge, town (out of Uxbridge Tp.).....		1,824	2,023
Whitechurch.....	5,014	4,529	4,019
<i>Ottawa City, Electoral District No. 103.</i>			
By Ward.....	5,138	4,959	6,417
Ottawa ward.....	5,738	6,572	7,940
St. George's ward.....	3,474	4,527	5,788
Victoria ward.....	3,156	2,966	3,054
Wellington ward.....	4,039	8,388	14,082 ¹⁰
Total Ottawa, municipal division.....	21,545	31,307	44,154

POPULATION BY SUB-DISTRICTS.

	1871.	1881.	1891.
<i>Oxford North, District No. 104.</i>	23,434	24,390	26,131
Blandford.....	2,008	2,089	1,911
Easthope North.....	2,998	2,722	2,551
Easthope South.....	2,275	2,245	2,149
Embro, village.....	484	616	627
Nissouri East.....	3,668	3,325	3,031
Woodstock, town.....	3,992	5,373	8,612
Zorra East.....	4,619	4,591	4,262
Zorra West.....	3,400	3,430	2,988
<i>Oxford South, District No. 105.</i>	24,487	24,778	22,421
Burford.....	5,543	5,466	4,939
Ingersoll, town.....	4,022	4,318	4,191
Norwich North.....	3,324	2,632	2,389
Norwich South.....	3,225	3,360	2,943
Norwich, village (out of Norwich North).....		1,411	1,255
Oakland.....	1,104	939	858
Oxford East.....	2,610	2,313	2,155
Oxford North.....	1,855	1,645	1,498
Oxford West.....	2,804	2,694	2,193
<i>Peel, District No. 106.</i>	16,369	16,387	15,472-66
Brampton, town.....	2,090	2,920	3,252
Chingacousy.....	6,129	5,476	4,750-44
Streetsville, village.....	617	755	695
Toronto.....	5,974	5,873	5,528
Toronto, Gore.....	1,559	1,363	1,247
<i>Perth North, District No. 107.</i>	18,798	26,538	26,909-7
Ellice.....	2,886	3,275	3,387
Elma.....	3,616	4,421	4,231
Listowell, town.....	976	2,688	2,587
Logan.....	3,199	3,355	3,094-3
Milverton, village (out of Mornington).....		562	603
Mornington.....	3,808	3,998	3,509
Stratford, city.....	4,313	8,239	9,501
<i>Perth South, District No. 108.</i>	22,715	21,608	19,402-0
Blanchard.....	3,905	3,244	2,920-4
Downie.....	3,738	3,489	3,281
Fullarton.....	2,903	2,708	2,511
Hibbert.....	3,416	3,394	2,636
Mitchell, town.....	1,802	2,284	2,101
St Mary's, town.....	3,120	3,415	3,416
Usborne.....	3,831	3,074	2,529-8

POPULATION BY SUB-DISTRICTS.

	1871.	1881.	1891.
<i>Peterborough East, District No. 109.</i>	17,338	20,402	21,920 ¹⁹
Ashburnham, village.....	1,197	1,266	1,674
Asphodel.....	3,247	1,918	1,866
Belmont.....	1,575	1,738	2,548
Burleigh, Anstruther and Chandos.....	1,381	1,520
Cardiff.....	721	497	612
Cavendish.....	260	*393	94
Douro.....	2,671	2,864	2,131
Dummer.....	1,951	2,149	2,143
Glamorgan.....	399	476	505
Harcourt, Dudley, Dysart, Guilford, Harburn, Bruton, Clyde, Eyre, Havelock, Livingstone, Lawrence and Nightingale.....	655	1,087	1,081 ²
Harvey.....	670	1,114	1,155
Lakefield, village (out of Douro).....	1,120
Methuen.....	227	260 ⁵⁹
Monmouth.....	426	548
Norwood, village (out of Asphodel).....	853	1,010
Otonabee.....	3,992	4,013	3,652
<i>Peterborough West, District No. 110.</i>	11,767	13,310	15,808
Ennismore.....	1,104	1,137	932
Monaghan North.....	1,479	912	1,021
Monaghan South.....	1,145	1,148	1,093
Peterborough, town.....	4,611	6,812	9,717
Smith.....	3,428	3,301	3,045
<i>Prescott, District No. 111.</i>	17,647	22,857	24,173
Alfred.....	1,697	3,208	3,053
Caledonia.....	1,281	1,751	1,943
Hawkesbury East.....	4,611	5,082	4,896
Hawkesbury West.....	1,977	2,360	2,740
Hawkesbury, village.....	1,671	1,920	2,042
Longueuil.....	1,835	1,162	1,172
L'Orignal, village (out of Longueuil).....	853	1,002
Plantagenet North.....	3,000	3,997	4,245
Plantagenet South.....	1,575	2,524	3,080
<i>Prince Edward, District No. 112.</i>	20,336	21,044	18,892 ⁵⁹
Ameliasburgh.....	3,304	3,451	3,080 ⁵⁹
Athol.....	1,740	1,573	1,284
Hallowell.....	3,554	3,704	3,379 ⁵⁰
Hillier.....	2,224	2,192	1,890
Marysburg North.....	1,794	1,700	1,430
Marysburg South.....	2,140	2,205	1,643
Picton, town.....	2,361	2,975	3,287
Sophiasburg.....	2,702	2,646	2,344 ¹
Wellington, village.....	517	598	555

* Taken with Galway (now in N. Victoria) in 1881, and population estimated in 1881 at 393.

POPULATION BY SUB-DISTRICTS.

	1871.	1881.	1891.
<i>Renfrew North, District No. 113.</i>			
	13,878	19,124	23,005
Algona South	700	759	1,025
Alice and Fraser	1,566	1,912	1,920
Bromley	1,428	1,797	1,933
Bu-hanan, Wylie and Rolph.....	459	699	1,034
Eganville (part out of Wilberforce)			315
Head, Maria and Clara.....	140	953	521
Pembroke	640	683	801
Pembroke, town.....	1,508	2,820	4,401
Patewawa and McKay	370	689	991
Ross	1,632	2,131	2,402
Stafford	768	1,055	1,173
Westmeath.....	2,632	3,220	3,612
Wilberforce and Algona North.....	1,955	2,406	2,877
<i>Renfrew South, District No. 114.</i>			
	14,099	19,042	23,975 /
Admaston.....	1,988	2,383	2,548
Arnprior, village.....	1,714	2,147	3,341
Bagot and Blythfield	1,142	1,126	1,595-4
Brougham	521	574	548
Brudenell (with Lyndoch in 1871 and 1881).....	1,210	1,270	1,104
Eganville, village (part out of Grattan)			395
Grattan	1,481	1,893	1,724
Griffith.....	406	614	275
Hagerty and Jones.....		986	1,608
Horton	1,267	1,510	1,608
Lyndoch (see Brudenell).....			294
Matawatchan (in Griffith in 1871 and 1881)			446
McNab	2,855	3,092	3,514
Raglan and Radcliffe		785	1,059
Renfrew, village	865	1,605	2,611
Sebastopol	650	626	710
Sherwood, Richards and Burns.....		431	592
<i>Russell, District No. 115.</i>			
	18,344	25,082	31,643
Cambridge	769	1,676	4,113
Clarence	2,666	4,411	4,779
Cumberland.....	2,922	3,535	4,014
Gloucester	4,785	6,254	6,823
New Edinburgh, (ward).....	596	995	1,673
Osgoode	4,267	4,753	4,858
Rockland, village (out of Clarence).....			1,465
Russell.....	2,339	3,458	3,918
<i>Simcoe East, District No. 116.</i>			
	16,071	27,185	35,801
Gravenhurst, town (out of Muskoka)		1,015	1,848
Matchedash (in Orillia in 1871 and 1881)			375
Medonte.....	2,541	3,632	4,514
Medora and Wood	90	1,116	921

POPULATION BY SUB-DISTRICTS.

	1871.	1881.	1891.
<i>Simcoe East, District No. 116.—(Concluded.)</i>			
Midland, village (out of Tay)		1,095	2,088
Monck	535	801	854
Muskoka	482	1,135	797
Orillia (Matchedash included in 1871 and 1881)...	1,894	3,097	3,687
Orillia, town	1,322	2,911	4,752
Oro	4,364	4,566	4,357
Penetanguishene, town (out of Tiny)		1,089	2,110
Tay	1,629	2,993	4,714
Tiny	3,214	3,736	4,784
<i>Simcoe North, District No. 117.</i>			
	18,755	26,120	28,206-3
Barrie, town.....	3,398	4,854	5,550
Collingwood, town.....	2,829	4,445	4,944-39
Creemore, village (out of Nottawasaga).....			721
Flos.....	1,756	3,141	3,788-2
Nottawasaga.....	6,704	6,971	6,060
Stayner, village (out of Nottawasaga).....		1,028	1,357
Sunnidale.....	1,991	2,802	2,772
Vespra.....	2,077	2,879	3,022
<i>Simcoe South, District No. 118.</i>			
	19,504	22,721	20,827-4
Alliston, village (out of Tecumseth).....		1,099	1,371
Becton, village (out of Tecumseth).....			771
Essa.....	4,221	4,666	3,592
Innisfil.....	5,480	5,499	5,119-0
Mulmur.....	3,505	4,211	3,661
Tecumseth.....	4,728	5,325	3,865-3
Tossorontio.....	1,570	1,921	1,870
Tottenham, village (out of Tecumseth).....			586-6
<i>Toronto City, Electoral District No. 119.</i>			
	56,092	86,415	144,028-3
St. Andrew's ward, W.....	8,918	11,447	14,251
St. David's ward, E.....	11,229	11,072	22,790
St. George's ward, W.....	3,534	5,544	7,519-4
St. James' ward, C.....	9,779	10,791	12,867
St. John's ward, C.....	10,868	12,192	13,765
St. Lawrence ward, E.....	3,861	4,864	7,864
St. Patrick's ward, W.....	7,903	14,965	27,668-5
St. Stephen's ward, and such portions of St. Marks' ward as is situated in this district, W.....		6,609	24,394-3
St. Thomas' ward, E.....		8,931	12,910-1
Total Municipal District.....	(56,092)	(86,196)	(181,220)
<i>Victoria North, District No. 120.</i>			
	12,324	16,661	16,849
Anson and Hindon.....	515	371	275
Bexley.....	489	903	902

POPULATION BY SUB-DISTRICTS.

	1871.	1881.	1891.
<i>Victoria North, District No. 120.—(Concluded.)</i>			
Carden.....		916	815
Dalton.....		530	509
Eldon.....	3,052	3,778	3,145
Fenelon.....	3,949	3,094	2,809
Fenelon Falls, village.....	1,027	1,155	1,219
Galway.....	261	394	710
Laxton, Digby and Longford.....	850	957	874
Lutterworth.....		586	549
Minden.....	797	1,110	1,182
Snowden.....		807	1,014
Stanhope, Sherburne and McClintock.....	310	551	583
Sumerville.....	1,074	1,509	1,940
Woodville, village (out of Eldon).....			323
<i>Victoria South, District No. 121.</i>			
	19,244	20,813	20,465
Bobcaygeon, village (out of Verulam).....		750	1,018
Emily.....	3,790	2,876	2,603
Lindsay, town.....	4,049	5,080	6,081
Mariposa.....	5,363	5,531	4,849
Omamee, village (out of Emily).....		744	687
Ops.....	3,350	3,358	2,926
Verulam.....	2,629	2,474	2,291
<i>Waterloo North, District No. 122.</i>			
	19,256	20,986	25,325
Berlin, town.....	2,743	4,054	7,425
Elmira, village (out of Woolwich).....			1,061
Waterloo North.....	3,640	3,590	3,443
Waterloo, town.....	1,594	2,066	2,941
Wellesley.....	5,710	5,752	5,609
Woolwich.....	5,569	5,524	4,838
<i>Waterloo South, District No. 123.</i>			
	20,995	21,754	25,148-39
Ayr, village (out of Dumfries N.).....			1,040
Dumfries North.....	3,951	3,848	2,522-16
Galt, town.....	3,827	5,187	7,535
Hespeler, village.....	797	698	1,482
New Hamburg, village.....	1,003	1,240	1,335
Preston, village.....	1,408	1,419	1,843
Waterloo South.....	4,198	4,004	3,904-1
Wilmot.....	5,811	5,358	5,487
<i>Welland, District No. 124.</i>			
	20,572	26,152	25,131-2
Birtie.....	2,933	3,986	4,222
Chippewa, village.....	922	664	523
Crowland.....	1,317	1,318	1,107
Fort Erie, village.....	835	722	934

POPULATION BY SUB-DISTRICTS.

	1871.	1881.	1891.
<i>Welland, District No., 124.—(Concluded.)</i>			
Humberstone.....	2,472	4,182	2,842
Niagara Falls, town.....	1,610	2,347	3,349
Niagara Falls, village (out of Stamford).....			1,179
Port Colborne, village.....	988	1,716	1,154
Stamford.....	2,999	3,162	2,099
Thorold.....	2,501	2,456	2,316-3
Thorold, town.....	1,645	2,456	2,273
Welland, town.....	1,100	1,870	2,035
Willoughby.....	1,250	1,273	1,099
<i>Wellington Centre, District No. 125.</i>			
Drayton, village (out of Peel).....	25,536	26,816	23,396-84
Elora, village.....	1,498	587	793
Fergus, village.....	1,666	1,387	1,304
Garafraza East.....	2,579	1,733	1,599-5
Garafraza West.....	3,128	2,635	2,169
Maryborough.....	4,418	3,620	3,045-3
Nichol.....	2,737	4,551	3,548-6
Orangeville, town.....	2,474	2,474	2,057-6
Peel.....	1,458	2,847	2,962
Pilkington.....	5,744	5,024	4,255-3
	2,308	1,958	1,664-3
<i>Wellington North, District No. 126.</i>			
Amaranth.....	17,903	26,024	24,968-56
Arthur.....	1,943	2,914	2,804-489
Arthur, village (out of Arthur).....	4,376	3,916	3,224
Clifford, village (out of Minto).....		1,257	1,296
Harriston, town (out of Minto).....		722	634
Luther East and West.....	1,772	1,772	1,687
Minto.....	1,772	3,347	4,224-2
Mount Forest, town.....	4,861	4,443	3,639-4
Palmerston, town (out of Wallace).....	1,370	2,170	2,214
Wallace.....		1,828	2,007-6
	3,581	3,655	3,239-4
<i>Wellington South, District No. 127.</i>			
Eramosa.....	23,425	25,400	24,378-3
Erin.....	3,758	3,611	3,118-6
Erin, village (out of Erin).....	5,320	5,121	4,048
Guelph.....			594
Guelph, city.....	2,955	2,793	2,464
Puslinch.....	6,878	9,890	10,539-4
	4,514	3,985	3,615-4
<i>Wentworth North, District No. 128.</i>			
Beverley.....	16,245	15,998	14,561
Dundas, town.....	5,803	5,230	4,636
Flamborough East.....	3,135	3,709	3,546
Flamborough West.....	3,894	3,598	2,661
Waterdown, village (out of Flamborough East).....	3,413	3,461	3,079
			669



1010486233

POPULATION BY SUB-DISTRICTS.

	1871.	1881.	1891.
<i>Wentworth South, District No. 129.</i>	14,922	15,539	16,770
Barton.....	2,865	3,525	4,997
Binbrook.....	1,946	1,814	1,674
Caistor.....	2,166	2,164	2,002
Glanford.....	2,039	1,977	1,744
Grimsby North.....	3,123	2,416	1,095
Grimsby South (with Grimsby North in '71 and '81)			1,610
Grimsby, village (out of Grimsby, North).....		692	883
Saltfleet.....	2,783	2,951	2,765
<i>York East, District No. 130.</i>	19,360	22,853	35,152 ⁴⁸
Markham.....	8,152	6,375	5,681
Markham, village (out of Markham).....		954	1,100
St. Paul and St. Mathew's wards, Toronto, formerly Yorkville village.....	2,203	4,825	17,689 ⁵
Scarborough.....	4,615	4,208	4,028
York East.....	4,390	6,491	6,654
<i>York North, District No. 131.</i>	21,654	21,730	20,284
Aurora, town.....	1,132	1,540	1,743
Bradford, village.....	1,130	1,176	996
Georgina and Georgina Island.....	1,987	2,482	1,990
Gwillimbury East.....	3,934	4,143	3,844
Gwillimbury North and Snake Island.....	2,304	2,151	1,990
Gwillimbury West.....	3,036	2,994	2,525
Holland Landing, village.....	649	580	443
King.....	7,482	6,664	6,067
Sutton, village (out of Georgina).....			686
<i>York West, District No. 132.</i>	16,260	18,884	41,863 ^{5y}
Etobicoke.....	2,985	2,976	4,558 ^y
Richmond Hill, village (out of Vaughan).....		867	743
St. Alban's ward, Toronto (formerly Parkdale; town).....		1,170	7,381
St. Mark's ward, Toronto (formerly Brockton, such portion as is situated in this district).....		786	5,327 ⁵
Vaughan.....	7,657	6,828	5,294 ^z
Weston, village (out of York).....			1,194
Woodbridge, village (out of Vaughan).....			762
York West.....	5,618	6,257	16,604 ³