

ESKIMO

HOUSING SURVEY

ARCTIC DISTRICT, N.W.T.

COMPILED BY PUBLIC HOUSING SECTION

DEPARTMENT OF NORTHERN AFFAIRS AND NATIONAL RESOURCES

JANUARY - APRIL, 1965

E100.H6  
E74  
c.1

## PREFACE

Without wishing to detract from the value, purpose, or accuracy of this survey, we must point out that it was carried out with the minimum of staff and funds; we do not have the facilities of D.B.S.

Albeit, great care has been taken to ensure that the information provided has been correctly correlated and tabulated. Wherever possible, the figures have been balanced and double checked - both population and housing.

Wherever possible, furthermore, the data provided has been compared with previous reports and surveys: population statistics from Canada Year Book, 1964, and housing totals from previous contracts. Most of the population comparisons are from the 1961 Census.

Low-cost houses of all types listed in the survey total 769, this includes houses for sale and welfare. The houses ordered by contract since the inception of the resale and welfare programs total 927, a discrepancy of 158. There is no obvious reason for this; however, inquiries made have led us to the conclusion that many houses listed as "Privately Constructed" are in fact low-cost houses - most of them the one-room rigid-frame or type 370. The discrepancy is fairly evenly spread across all settlements with one exception that shall be mentioned: the houses listed for Frobisher Bay agree almost exactly with the report recently submitted by the Town Manager.

The staff engaged upon this task are reasonably confident that bearing in mind the limitations of such a survey, the information provided is accurate - particularly the population totals. Finally it is our earnest desire to see the information used for the benefit of Eskimo people, most of all for a radical improvement in their housing standards.

Dave Davies  
Jake Hendricks  
John MacDougall

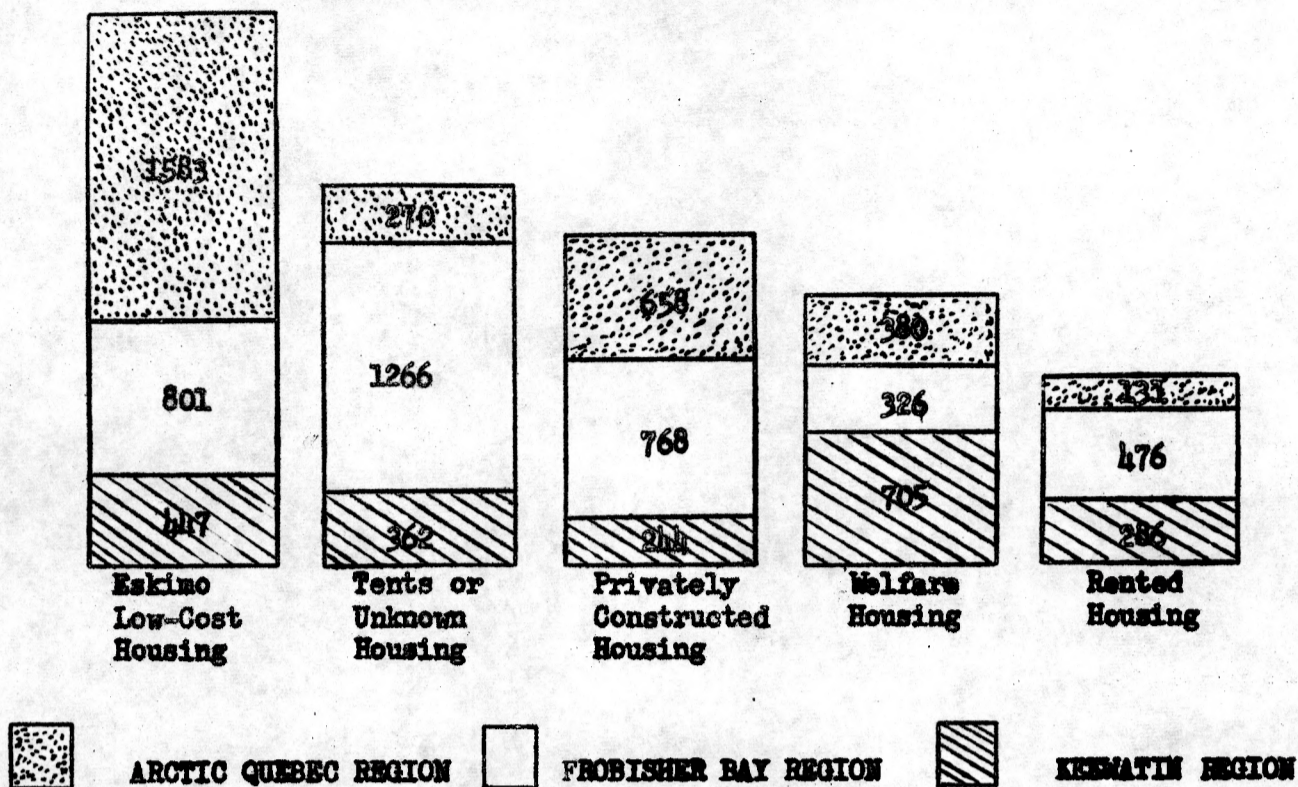
CONTENTS

<u>PART I - ESKIMO HOUSING IN THE ARCTIC DISTRICT</u>	<u>PAGE</u>
Comparison of Number of Occupants of Various Types of Housing.....	1
Numbers and Types of Housing with Number of Occupants.....	1
Eskimo Housing by Numbers of Rooms by Area and Region.....	2
Number of Persons Living in Tents and Uninhabitable Housing.....	4
Percentage of One-Room Housing by Occupants.....	6
Number of One-Room Houses and Occupancy by Area and Region.....	6
Housing Facilities.....	8
Housing Construction Details.....	10
 <u>PART II - ESKIMO FAMILY UNITS AND INCOME IN THE ARCTIC DISTRICT</u>	
Number and Size of Family Units.....	11
Income Per Family Unit.....	13
 <u>PART III - ESKIMO POPULATION OF THE ARCTIC DISTRICT</u>	
Population by Area and Region.....	15
Population by Age Groups.....	17
Comparison of Eskimo and Canadian Population by Age Group.....	19
Population by 5-Year Age Group by Area and Region.....	20

PART I

ESKIMO HOUSING IN THE ARCTIC DISTRICT

COMPARISON OF NUMBER OF OCCUPANTS OF VARIOUS TYPES OF HOUSING



NUMBERS AND TYPES OF HOUSES WITH NUMBERS OF OCCUPANTS

	Arctic Quebec Region		Frobisher Bay Region		Keewatin Region	
	Persons	Houses	Persons	Houses	Persons	Houses
Tent or Snowhouses	261	-	1,219	-	217	-
Welfare	380	68	326	61	705	147
<u>RESALE ESKIMO LOW-COST</u>						
1 Room	1,417	229	645	113	372	71
1 Bedroom	74	10	41	7	28	5
2 Bedroom	20	3	33	7	14	2
3 Bedroom	72	11	82	9	33	5
<u>PRIVATELY CONSTRUCTED</u>						
1 Room	430	71	563	91	169	33
2 Room	138	22	97	14	36	6
3 Room	66	10	58	5	39	6
More than 3 Room	24	4	50	6	0	0
<u>RENTED</u>						
1 Room	45	8	95	18	59	16
2 Room	46	8	103	23	54	11
3 Room	25	5	197	27	115	15
More than 3 Room	15	3	81	14	58	8
No Housing or Unknown	9	-	47	-	145	-
<b>Regional Totals</b>	<b>3,022</b>	<b>452</b>	<b>3,637</b>	<b>395</b>	<b>2,044</b>	<b>325</b>

ESKIMO HOUSING BY NUMBER OF ROOMS BY AREA AND REGION

(Low-Cost Resale, Welfare, Privately Constructed, Rented.)

ARCTIC QUEBEC REGION	1 Room	2 Room	3 Room	4 Room & Over
Belcher Islands	8	1	-	2
Fort Chimo	47 (10)	24 (8)	5	5
George River	17	4	1	-
Great Whale River	59 (4)	6	2	5
Ivuyivik	14 (1)	1	-	1
Koartak	12 (2)	3	-	-
Payne Bay	14 (1)	1	-	-
Port Burwell	19	-	-	-
Port Harrison	55 (1)	2	6	3
Povungnituk	69 (1)	5	4	-
Sugluk	40	1	-	2
Wakeham Bay	13	1	-	-
Total	367	49	18	18
Less Uninhabitable Houses	20	8	-	-
Available Housing	347	41	18	18

FROBISHER BAY REGION	1 Room	2 Room	3 Room	4 Room & Over
Arctic Bay	7 (2)	2	-	-
Broughton Island	13	5	1	-
Cape Dorset	38 (1)	8	5	-
Clyde River	18 (6)	3	2	1
Frobisher Bay *	99 (19)	22 (14)	28 (2)	27 (2)
Grise Fiord	6 (1)	1	2	-
Hall Beach	4 (2)	-	-	-
Igloolik	41 (19)	4 (1)	1	1
Lake Harbour	9	2	-	-
Padloping Island	4	-	-	1
Pangnirtung	13 (1)	4	1	-
Pond Inlet	39 (26)	1	5 (1)	1
Total	291	52	45	31
Less Uninhabitable Houses	77	15	3	2
Available Housing	214	37	42	29

\* Includes 24 vacant houses (19 one-room and 5-three-room)  
Uninhabitable housing shown in brackets.

KEEWATIN REGION	1 Room	2 Room	3 Room	4 and Over
Baker Lake	47 (4)	9	-	6
Chesterfield Inlet	13	2	5	3
Coral Harbour	35 (1)	1	3	-
Daly Bay	6	-	1	-
Eskimo Point	69	8	2	4
Rankin Inlet	37 (9)	-	11	1
Repulse Bay	25 (8)	-	-	-
Resolute	N O T A V A I L A B L E			
Whale Cove	33 (9)	2	2	-
Totals	265	22	24	14
Less Uninhabitable Houses	31	-	-	-
Available Housing	234	22	24	14
District Totals	923	123	87	63

Comparison by Percentage of Total Housing Available

	1 Room	2 Room	3 Room	4 and Over
Eskimo Housing in Arctic District (from above)	77%	10%	7%	6%
Indian Housing for all of Canada	16%	19%	22%	43%
All Canadian Housing	1%	2%	8%	89%

NOTE

1. 322 tents housing 1697 persons are not included
2. 156 uninhabitable houses with 897 occupants are included
3. The percentages shown for Indian housing are for all of Canada and are taken from the Indian Housing Survey of 1962
4. 24 vacant houses are included (19 one-room and 5 three-room)

NUMBER OF PERSONS LIVING IN TENTS, SNOWHOUSES AND UNINHABITABLE HOUSING

ARCTIC QUEBEC REGION	Tents and Snowhouses		Uninhabitable Houses	
	No. of Tents	No. of Persons	No. of Houses	No. of Persons
Belcher Islands	11	61	-	-
Fort Chimo	4	14	18	114
George River	-	-	-	-
Great Whale River	10	48	4	22
Ivuyivik	3	12	1	3
Koartak	-	-	2	10
Payne Bay	10	65	1	7
Port Burwell	-	-	-	-
Port Harrison	3	5	1	7
Povungnituk	2	8	1	12
Sugluk	-	-	-	-
Wakeham Bay	7	48	-	-
Regional Totals	50	261	28	175

FROBISHER BAY REGION

Arctic Bay	20	128	2	14
Broughton Island	17	88	-	-
Cape Dorset	23	121	1	8
Clyde River	16	87	6	34
Frobisher Bay	6	38	37	191
Grise Fiord	-	-	1	8
Hall Beach	4	29	2	14
Igloolik	26	152	20	139
Lake Harbour	14	67	-	-
Padloping Island	6	30	-	-
Pangnirtung	95	479	1	1
Pond Inlet	-	-	27	163
Regional Totals	227	1,219	97	572



NUMBER OF PERSONS LIVING IN TENTS, SNOWHOUSES AND UNINHABITABLE HOUSING (Continued)

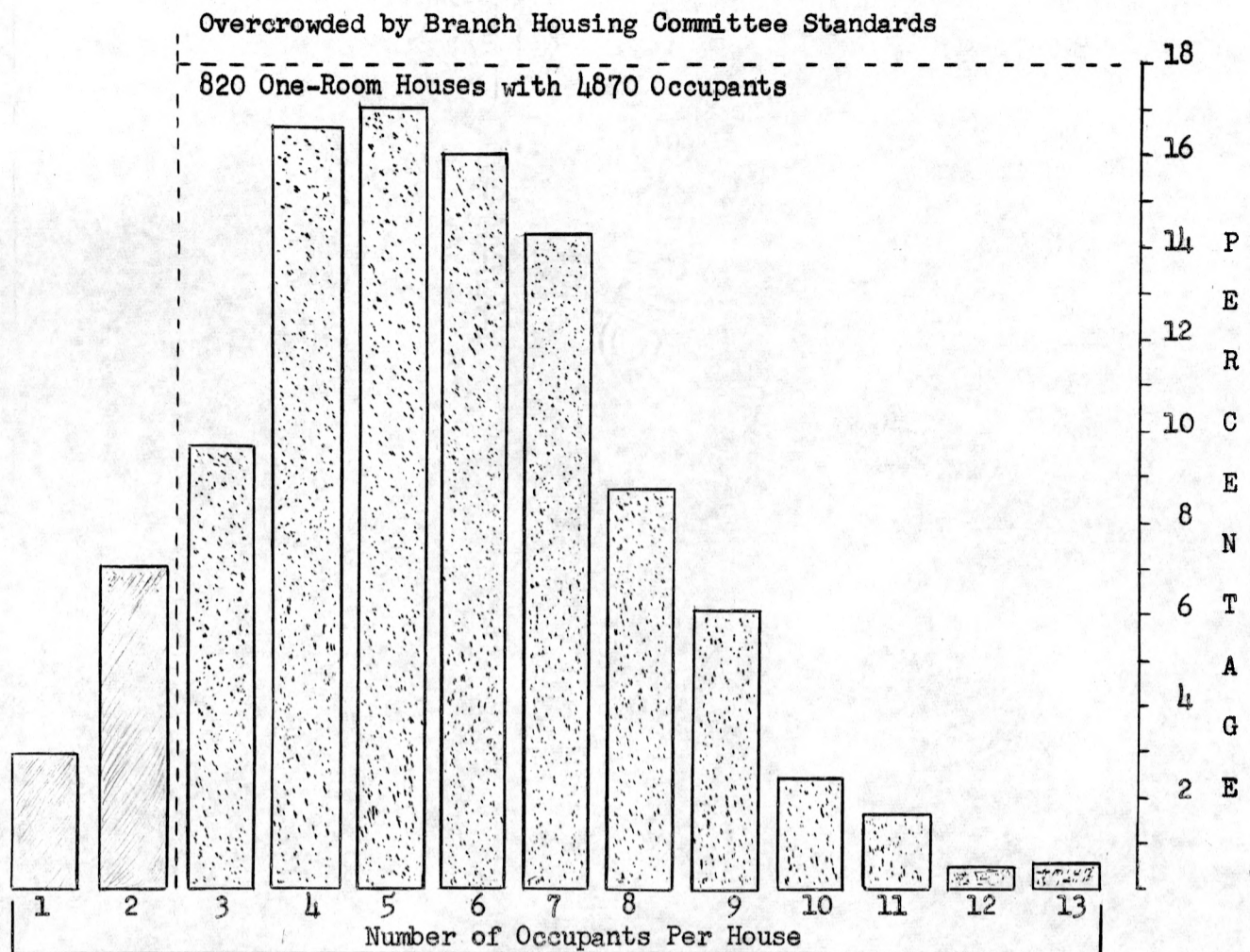
KEEWATIN REGION	Tents and Snowhouses		Uninhabitable Houses	
	No. of Tents	No. of Persons	No. of Houses	No. of Persons
Baker Lake	30	157	4	24
Chesterfield Inlet	-	-	-	-
Coral Harbour	-	-	1	7
Daly Bay	-	-	-	-
Eskimo Point	11	35	-	-
Rankin Inlet	-	-	9	46
Repulse Bay	4	25	8	34
Resolute	NOT AVAILABLE			
Whale Cove	-	-	9	39
Regional Totals	45	217	31	150

ARCTIC DISTRICT TOTALS

	No. of Family Units	No. of Persons
Tents and/or Snowhouses	397	1,697
Uninhabitable Housing	229	897
No Present Housing	9	54
District Total	635	2,648
Percentage of Total Population		30%
Percentage of Total Family Units	29%	

"Uninhabitable" is used for housing which, due to structural deficiencies or deterioration, is not suitable for occupancy under any circumstance.

PERCENTAGE OF ONE ROOM HOUSING BY NUMBER OF OCCUPANTS



NUMBER OF ONE-ROOM HOUSES AND OCCUPANCY BY AREA AND REGION

ARCTIC QUEBEC REGION	Number of Occupants Per One-Room House												
	1	2	3	4	5	6	7	8	9	10	11	12	13
Belcher Islands	-	1	-	1	2	1	1	1	1	-	-	-	-
Fort Chimo	1	5	6	7	7	5	3	6	2	1	3	1	-
George River	-	-	-	3	3	2	3	4	2	-	-	-	-
Great Whale River	2	2	7	8	9	11	11	3	4	-	1	1	-
Ivuyivik	-	-	1	1	4	3	3	-	-	2	-	-	-
Koartak	-	-	1	1	6	1	1	1	1	-	-	-	-
Payne Bay	-	-	-	2	4	5	1	-	2	-	-	-	-
Port Burwell	2	1	1	5	3	2	4	-	-	-	1	-	-
Port Harrison	-	2	6	10	9	6	8	5	5	1	2	-	1
Povungnituk	1	3	6	12	8	12	7	9	6	2	2	-	1
Sugluk	-	1	2	1	3	8	11	6	5	2	1	-	-
Wakeham Bay	-	-	1	-	-	3	3	6	-	-	-	-	-
Regional Totals	6	12	31	51	58	59	56	41	28	8	10	2	2

NUMBER OF ONE-ROOM HOUSES AND OCCUPANCY BY AREA AND REGION (Continued)

FROBISHER BAY REGION	Number of Occupants Per One-Room House												
	1	2	3	4	5	6	7	8	9	10	11	12	13
Arctic Bay	-	-	1	-	1	1	1	1	2	-	-	-	-
Broughton Island	-	1	2	2	3	1	-	3	-	1	-	-	-
Cape Dorset	1	3	3	10	4	6	5	2	3	1	-	-	-
Clyde River	-	-	1	3	5	3	1	1	2	1	1	-	-
Frobisher Bay	3	7	7	11	19	17	6	7	1	2	-	-	-
Grise Fiord	-	-	-	1	1	2	1	1	-	-	-	-	-
Hall Beach	-	-	-	2	-	1	-	-	1	-	-	-	-
Igloolik	-	1	3	7	4	3	6	6	5	3	-	1	2
Lake Harbour	-	1	-	-	1	4	-	1	2	-	-	-	-
Padloping Island	-	-	1	2	-	-	1	-	-	-	-	-	-
Pangnirtung	4	2	-	-	1	1	1	1	2	-	1	-	-
Pond Inlet	-	1	5	5	6	8	6	2	4	1	-	-	1
Regional Totals	8	16	23	43	45	47	28	25	22	9	2	1	3

KEEWATIN REGION

Baker Lake	4	6	4	7	7	7	7	4	1	-	-	-	-
Chesterfield Inlet	-	1	2	3	1	3	2	1	-	-	-	-	-
Coral Harbour	1	3	1	2	8	5	8	2	2	1	1	1	-
Daly Bay	-	-	-	1	1	-	1	1	1	1	-	-	-
Eskimo Point	1	15	6	18	15	6	7	1	-	-	-	-	-
Rankin Inlet	-	-	5	9	8	8	4	1	1	1	-	-	-
Repulse Bay	1	2	6	7	1	2	5	-	1	-	-	-	-
Resolute	N	O	T		A	V	A	I	L	A	B	L	E
Whale Cove	1	4	7	5	7	5	2	2	-	-	-	-	-
Regional Totals	8	31	31	52	48	36	36	12	6	3	1	1	-

DISTRICT TOTALS

22	62	85	146	151	142	120	78	56	20	13	4	5
----	----	----	-----	-----	-----	-----	----	----	----	----	---	---

HOUSING FACILITIESA. WATER AND SEWAGE

	Number of Houses	% of Total Houses
1. <u>Water Source</u>		
Housing with Self-Obtained Supply (Lake, River, etc.)	822	75%
Housing with Delivered Supply	203	18%
Housing with Piped Supply	75	7%

2. Water Storage

Housing with Interior Storage Tank	440	40%
Housing with 45 Gallon Barrel Storage	227	21%
Housing with No Storage Facilities	433	39%

3. Sewage Disposal

Housing with Casual Disposal (on Ground, Ice, etc.)	1010	92%
Housing with Interior Storage Tank	51	5%
Housing with Piped Out Disposal	39	3%

4. Bathroom Facilities

Housing with Flush Type Toilets	10	1%
* Housing with Chemical Type Toilets	724	66%
Housing with No Toilet Facilities	366	33%

COMPARISON WITH INDIAN AND CANADIAN HOUSING BY PERCENTAGE OF TOTAL HOUSING

	Running Water	Sewer	Indoor Toilet
Canadian Housing	92%	-	90%
Indian Housing (All Canada)	13%	9%	9%
Eskimo Housing (Arctic District)	7%	3%	1%

NOTE

- Housing facilities are shown for 1100 of 1172 houses in the Arctic District. Details on the remaining 72 houses are not available.
- Facilities are not shown for the 322 tents in the District.
- Although there are 724 houses shown as having chemical toilets, only a very small number of these are properly installed or correctly used. This is largely due to the cost of the necessary chemicals.

HOUSING FACILITIES (Continued)

B. HEATING, COOKING AND LIGHTING

	Number of Houses	% of Total Houses
<u>1. Heating</u>		
Housing with Furnaces	6	.5%
Housing with Oil Space Heaters	139	13%
Housing Using Cooking Unit for Heat	924	84%
Housing with Other Source of Heat	31	2.5%

<u>2. Cooking</u>		
Housing with Electric Ranges	11	1%
Housing with Oil Ranges	828	75%
Housing with Wood Ranges	111	10%
Housing Using Space Heater for Cooking	26	2%
Housing with Other Means for Cooking (Seal Oil Lamps, Gasoline Camp Stoves, etc.)	124	12%

<u>3. Lighting</u>		
Housing with Gasoline or Kerosene Lamps	808	73%
Housing with Electric Lighting	292	27%

COMPARISON WITH INDIAN AND CANADIAN HOUSING BY PERCENTAGE OF TOTAL HOUSING

	Electricity
Canadian Housing	99%
Indian Housing (All Canada)	44%
Eskimo Housing	27%

HOUSING CONSTRUCTIONA. EXTERIOR

<u>1. Types of Roof</u>	Number of Houses	% of Total Houses
Shingle	22	2%
Roll Roofing	496	45%
Sod	35	3%
Canvas	50	5%
Other (Plywood, Metal)	497	45%

2. Foundation

Wooden Piles	137	12%
Mudsills	899	82%
Other	64	6%

3. Chimney

Brick	0	0%
Metal Safety Type	824	75%
Stove Pipe	228	21%
No Chimney	48	4%

B. INTERIOR1. Walls

Plaster	11	1%
Wood	1006	92%
Other (Paper, Cardboard)	83	8%

2. Ceiling

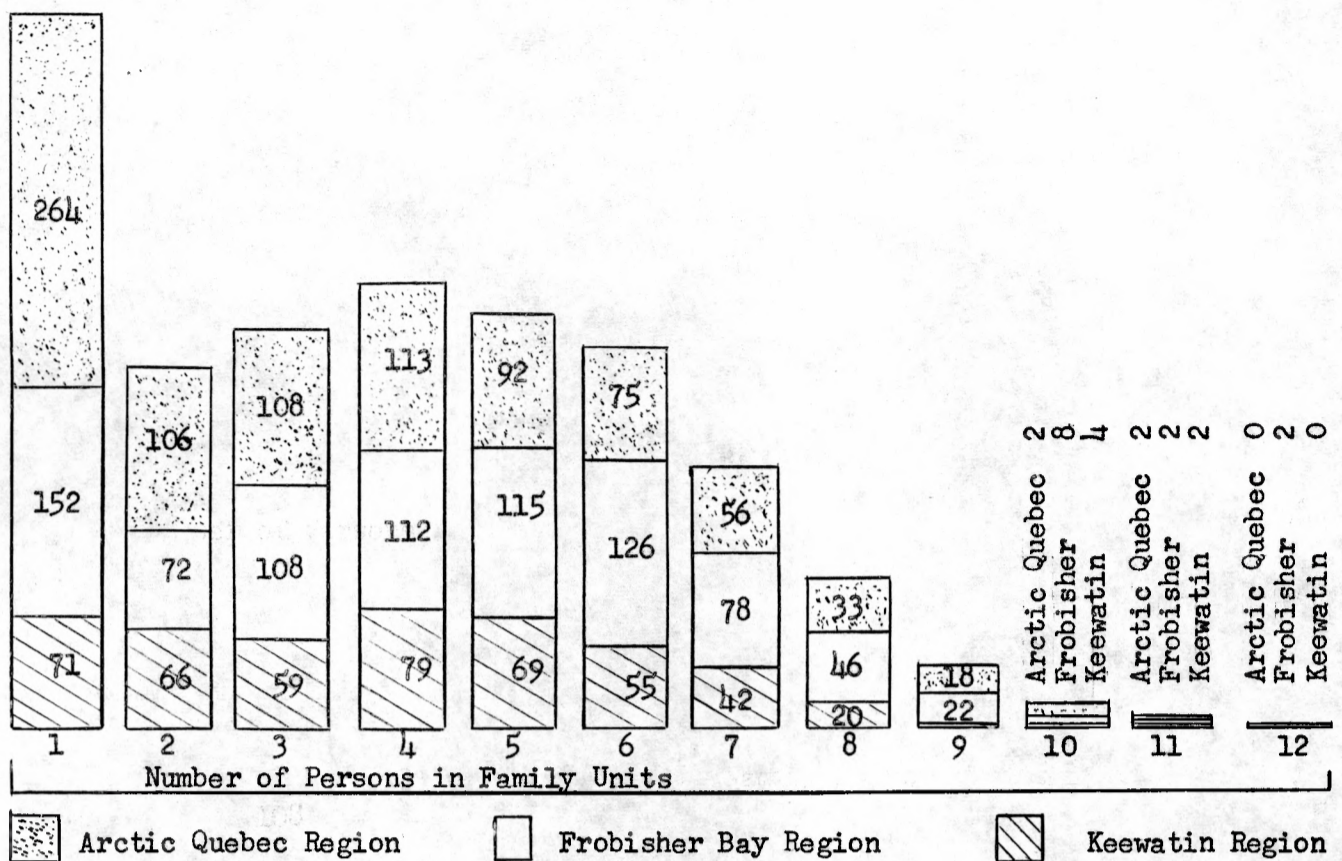
Plaster	11	1%
Wood	885	81%
Other (Paper, Cardboard)	56	5%
None	148	13%

3. Floor

Linoleum or Tile	265	24%
Wood	809	74%
Dirt or Stone	26	2%

PART II

ESKIMO FAMILY UNITS AND INCOME



NUMBER AND SIZE OF FAMILY UNITS BY REGIONS AND AREAS

ARCTIC QUEBEC REGION	NUMBER OF PERSONS IN FAMILY UNITS											TOTALS
	1	2	3	4	5	6	7	8	9	10	11	
Belcher Islands	14	7	2	6	5	3	2	1				40
Fort Chimo	43	20	16	13	11	9	12	6	8		1	139
George River	14	2	2	7	7	2	3	2	1			40
Great Whale River	37	16	23	17	17	14	8	2		1		135
Ivuyivik	12	4	2	5	7	3	1					34
Koartak	3	4	4	4	5	2		1				23
Payne Bay	16	6	8	6	2	6	1	2	1			48
Port Burwell	13	4	3	7	3	1	2					33
Port Harrison	54	18	13	13	13	8	5	5	2		1	132
Povungnituk	21	16	23	23	13	14	10	7	3			130
Sugluk	28	6	8	9	6	8	7	5	2	1		80
Wakeham Bay	9	3	4	3	3	5	5	2	1			35
Regional Totals	264	106	108	113	92	75	56	33	18	2	2	869

Size of Average Family Unit 3.4



FROBISHER BAY REGION	NUMBER OF PERSONS IN FAMILY UNITS												TOTALS
	1	2	3	4	5	6	7	8	9	10	11	12	
Arctic Bay	6	3	10	4	6	8	4	2	1				44
Broughton Island	5	5	8	4	6	5	2	5		2			42
Cape Dorset	32	4	7	21	15	13	6	6	1	1			106
Clyde River	1	2	4	8	9	10	4	2	2	1		1	44
Frobisher Bay	77	19	30	29	34	34	17	12	6	2			260
Grise Fiord	1	2	1	1	1	2	2	1					11
Hall Beach		2	2	1	1	4	2						12
Igloolik	3	13	19	16	11	15	11	9	2	1			100
Lake Harbour	9	4	3	3	4	5	2	1	2			1	34
Padloping Island			4	3	1		2	1					11
Pangnirtung	10	12	11	12	17	18	21	6	6		1		114
Pond Inlet	8	6	9	10	10	12	5	1	2	1	1		65
Regional Totals	152	72	108	112	115	126	78	46	22	8	2	2	843

Size of Average Family Unit 4.0

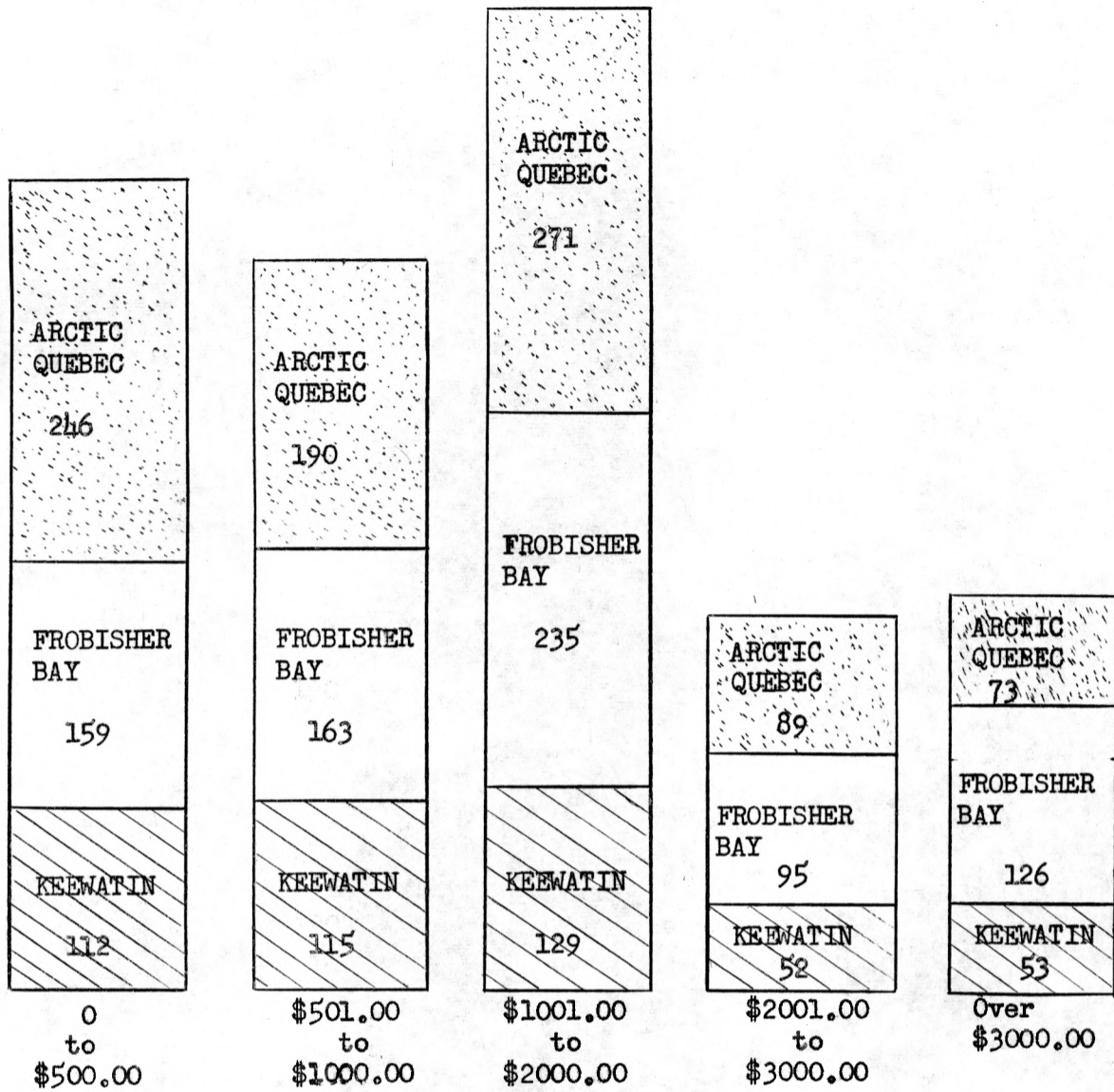
KEEWATIN REGION

Baker Lake	26	11	11	18	18	17	15	4		1			121
Chesterfield Inlet	4	5	3	4	2	6	2	4					30
Coral Harbour	9	13	10	8	9	5	5	3	1				63
Daly Bay		2		1	1		1	2	1	1			9
Eskimo Point	11	22	13	24	18	10	5	1	1		1		106
Rankin Inlet	13	3	8	12	11	8	8	1	1	1	1		67
Repulse Bay	4	5	5	8	3	4	3	2					34
Resolute	N	O	T		A	V	A	I	L	A	B	L	E
Whale Cove	4	5	9	4	7	5	3	3		1			21
Regional Totals	71	66	59	79	69	55	42	20	4	4	2	0	471

Size of Average Family Unit 4.1

ARCTIC DISTRICT TOTALS	487	244	275	304	276	256	176	99	40	14	6	2	2183
------------------------	-----	-----	-----	-----	-----	-----	-----	----	----	----	---	---	------

Size of Average Family Unit 3.8



INCOME PER FAMILY UNIT BY REGIONS AND AREAS

ARCTIC QUEBEC REGION	0 to \$500.00	\$501.00 to \$1000.00	\$1001.00 to \$2000.00	\$2001.00 to \$3000.00	Over \$3000.00
Belcher Islands	16	15	6	2	1
Fort Chimo	48	28	35	14	14
George River	6	9	18	6	1
Great Whale River	44	33	34	7	17
Ivuyivik	9	9	11	3	2
Koartak	15	5	2	-	1
Payne Bay	18	13	12	2	3
Port Burwell	10	6	14	3	-
Port Harrison	33	18	44	24	13
Povungnituk	29	30	56	10	5
Sugluk	13	19	19	15	14
Wakeham Bay	5	5	20	3	2
Regional Totals	246	190	271	89	73

INCOME PER FAMILY UNIT BY REGIONS AND AREAS (Continued)

FROBISHER BAY REGION	0 to \$500.00	\$501.00 to \$1000.00	\$1001.00 to \$2000.00	\$2001.00 to \$3000.00	Over \$3000.00
Arctic Bay	10	23	8	2	1
Broughton Island	8	5	14	13	2
Cape Dorset	29	9	28	21	19
Clyde River	6	5	8	8	9
Frobisher Bay	56	30	27	18	73
Grise Fiord	3	2	4	1	
Hall Beach	1	3	5	1	2
Igloolik	27	37	28	5	3
Lake Harbour	5	6	18	3	2
Padloping Island	1	2	6	1	1
Pangnirtung	5	22	59	19	9
Pond Inlet	8	19	30	3	5
Regional Totals	159	163	235	95	126

KEEWATIN REGION

Baker Lake	47	26	24	12	12
Chesterfield Inlet	4	8	9	3	6
Coral Harbour	6	6	23	13	15
Daly Bay	DETAILS	NOT	AVAILABLE		
Eskimo Point	35	41	20	5	4
Rankin Inlet	5	19	22	9	12
Repulse Bay	9	6	17	2	
Resolute	DETAILS	NOT	AVAILABLE		
Whale Cove	6	9	14	8	4
Regional Totals	112	115	129	51	53

ARCTIC DISTRICT TOTALS	514	468	635	236	252
------------------------	-----	-----	-----	-----	-----

Incomes shown above are approximate and should be regarded only as a general indication. Family Allowances and Pensions are included. Social Assistance and Allowances for Country Food are not included. 78 Family Units with unknown incomes are not included above.

PART III

ESKIMO POPULATION OF THE ARCTIC DISTRICT

ESKIMO POPULATION OF THE ARCTIC DISTRICT

ARCTIC QUEBEC REGION	ESTIMATED POPULATION 15 August 1963	SURVEY 1 February 1965	
		Population	No. Family Units *
Belcher Islands	169 (169)	123	40
Fort Chimo	674	507	139
George River	120	145	40
Great Whale River	430	457	135
Ivuyivik	106	106	34
Koartak	83	84	23
Payne Bay	161	154	48
Port Burwell	36 (36)	93	33
Port Harrison	376	398	132
Poyungnituk	410	516	130
Sugluk	257	295	80
Wakeham Bay	105	144	35
Regional Totals	2,927	3,022	869
1961 Census Total		2,636	
FROBISHER BAY REGION			
Arctic Bay	183	189	44
Broughton Island	149	189	42
Cape Dorset	316	407	106
Clyde River	224	238	44
Frobisher Bay	846	984	260
Grise Fiord	72	51	11
Hall Beach	66	57	12
Igloolik	485	472	100
Lake Harbour	114	140	34
Padloping Island	53	51	11
Pangnirtung	609	568	114
Pond Inlet	269	291	65
Regional Totals	3,386	3,637	843
1961 Census Total		3,236	

\* See Page 16 for the definition of a family unit.  
 ( ) Where available 1961 Census population is shown in brackets.

KEEWATIN REGION	ESTIMATED POPULATION 15 August, 1963	SURVEY 1 February 1965	
		Population	No. Family Units *
Baker Lake	458	492	121
Chesterfield Inlet	103	131	30
Coral Harbour	204	212	63
Daly Bay	-	55	9
Eskimo Point	362	403	104
Rankin Inlet	436	288	67
Repulse Bay	121	137	34
Resolute	96	119	Unavailable
Whale Cove	166	177	41
Regional Totals	1,946	2,044	469
1961 Census Total		1,655	
District Totals	8,259	8,703	2,181

EXPLANATORY NOTES

1. Eskimo population only is shown. Indians and "others" are not included
2. The figures shown in the first column are the estimates of population made on the 15th of August, 1963 and are included for comparison only.
3. The figures shown in the second column represent the actual population of each settlement, including adjacent camps, at the time of the survey, which took place during the months of January, February and March, 1965. Eskimo residents of Churchill, Manitoba, have not been included.
4. The definition of a family unit is given below.

\* Definition of Family Unit

For the purposes of this survey a family unit shall mean a natural family consisting of a family head and one or more other persons related to the head by birth, marriage or adoption. The following exceptions should be noted.

- (1) Any unmarried person, 21 years of age or older, whether living alone or with someone else, will be considered a family unit.
- (2) Any female, 16 years of age or older, who has one or more children residing with her, whether she and her children are living in a separate residence or with someone else, will be considered a separate unit. In the event that the children are considered part of their grandparents family, she will not be treated as a family unit.
- (3) A parent or parents residing with a son or daughter will be considered a separate unit.

ARCTIC QUEBEC REGION	Ages 0-21 (incl.)		Ages 0-14 (incl.)		Ages 15-64 (incl.)		Ages 65 and over	
	Persons	Percent	Persons	Percent	Persons	Percent	Persons	Percent
Belcher Islands	69	56.1%	55	44.7%	67	55.2%	1	.07%
Fort Chimo	302	59.6%	232	45.7%	262	51.7%	13	2.6%
George River	88	60.7%	68	46.9%	73	50.3%	4	2.8%
Great Whale River	269	58.8%	214	46.9%	238	52.0%	5	1.1%
Ivuyivik	57	53.8%	43	40.7%	61	57.5%	2	1.8%
Koartak	49	58.3%	43	51.2%	39	46.4%	2	2.4%
Payne Bay	88	57.1%	67	43.6%	83	53.8%	4	2.6%
Port Burwell	47	50.5%	33	35.5%	60	64.5%	0	0%
Port Harrison	209	52.5%	169	42.5%	221	55.5%	8	2.0%
Povungnituk	313	60.7%	245	47.5%	261	50.6%	10	1.9%
Sugluk	178	60.3%	145	49.2%	142	48.1%	8	2.7%
Wakeham Bay	92	63.8%	72	50.0%	70	48.6%	2	1.4%
Regional Totals	1,761	58%	1,386	45.8%	1,577	52.3%	59	1.9%
1961 Census % of Canadian Population		52%		34%		58.4%		7.6%

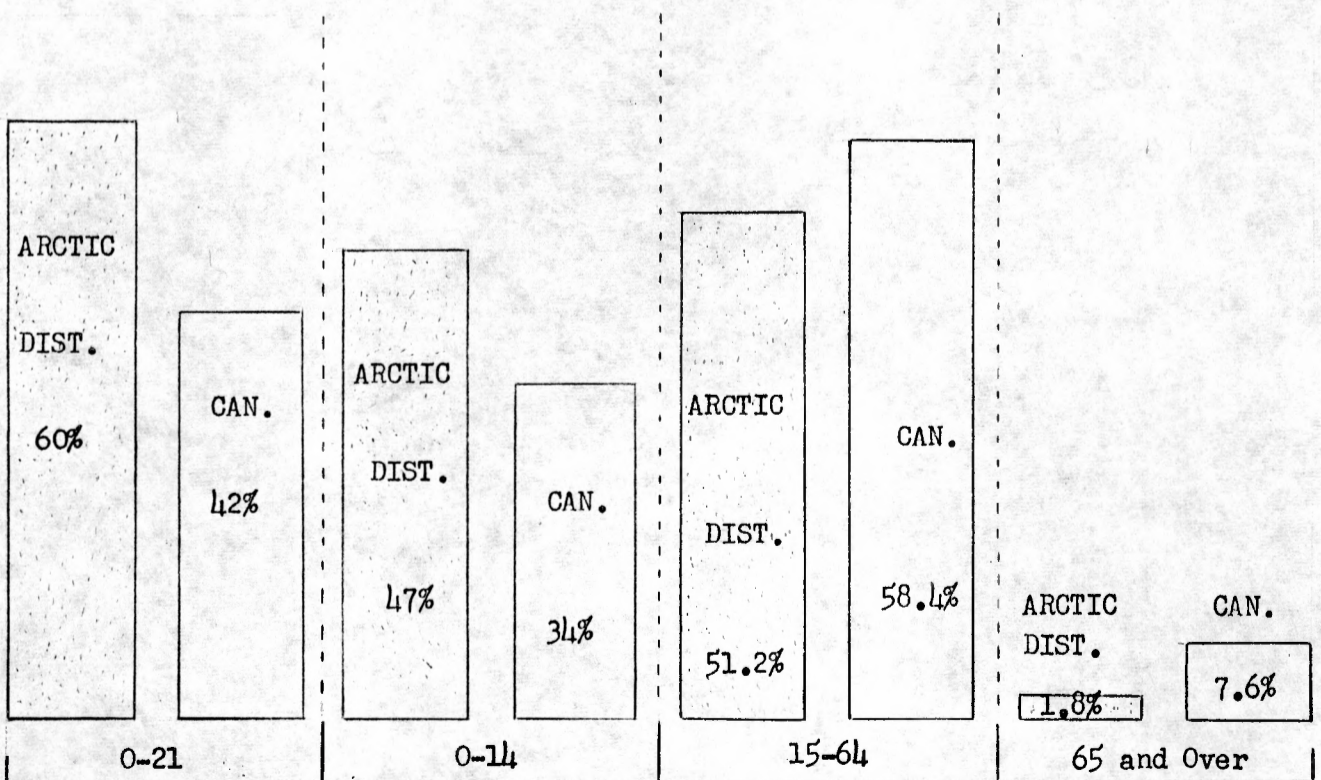
## FROBISHER BAY REGION

Arctic Bay	115	60.9%	86	46%	100	52.4%	3	1.6%
Broughton Island	119	62.9%	88	46.5%	101	53.5%	0	0%
Cape Dorset	242	76.6%	185	45.5%	214	52.5%	8	2.0%
Clyde River	163	68%	124	52.1%	114	47.9%	0	0%
Frobisher Bay	595	60.4%	473	48%	496	50.5%	15	1.5%
Grise Fiord	34	63%	31	60.8%	20	39.2%	0	0%
Hall Beach	36	54.5%	27	47.4%	28	49.1%	2	3.5%
Igloolik	305	62.9%	223	47.2%	245	51.9%	4	0.9%
Lake Harbour	83	72.8%	64	45.7%	73	52.2%	3	2.1%
Padloping Island	31	58.5%	28	54.9%	22	43.1%	1	2.0%
Pangnirtung	313	51.4%	281	49.5%	273	48.0%	14	2.5%
Pond Inlet	186	69.1%	148	50.8%	139	47.8%	4	1.4%
Regional Totals	2,222	61%	1,758	48.3%	1,825	50.2%	54	1.5%
1961 Census % of Canadian Population		42%		34%		58.4%		7.6%

REGIONAL POPULATION BY AGE GROUPS (Continued)

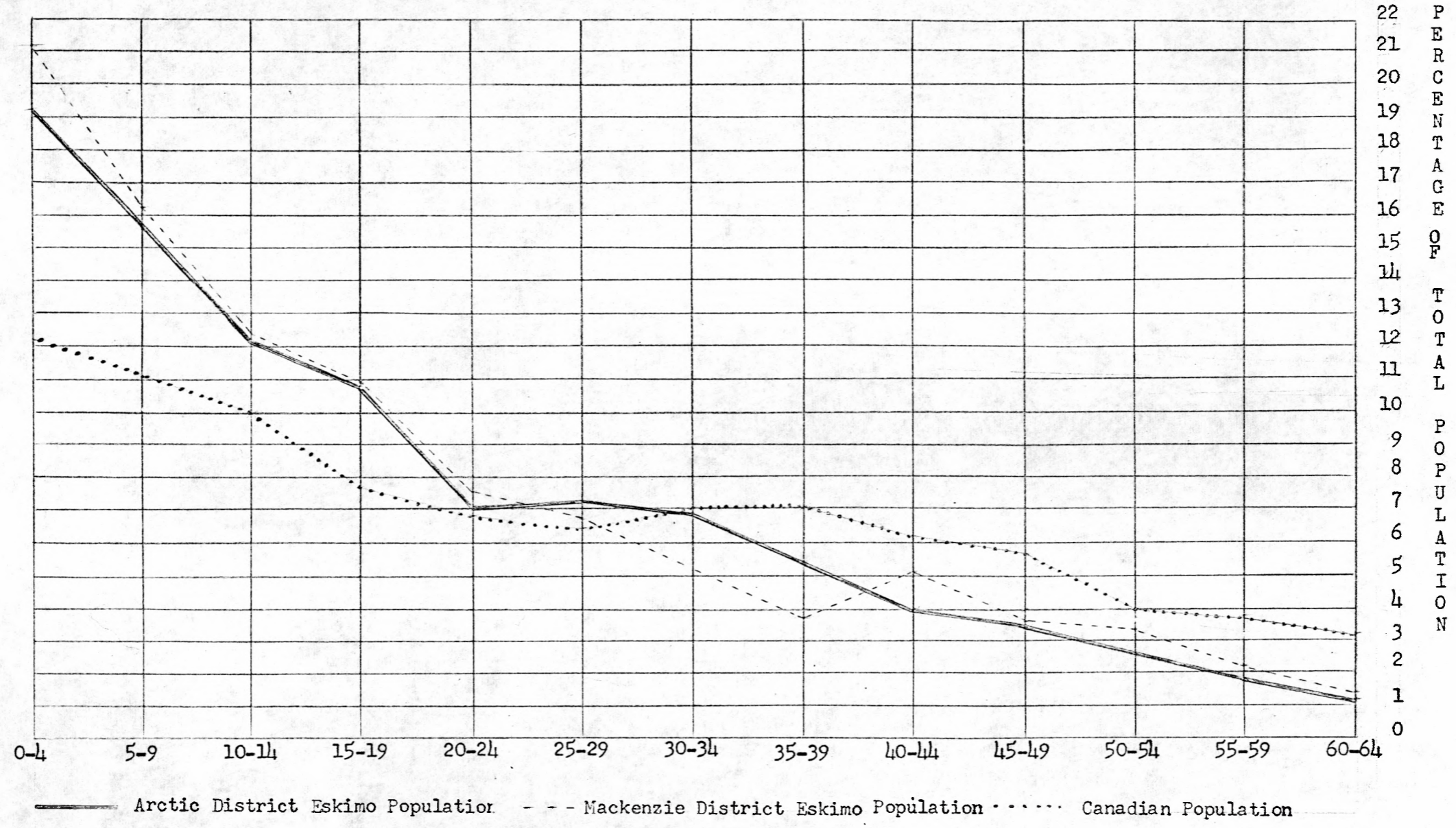
KEEWATIN REGION	Ages 0-21 (incl.)		Ages 0-14 (incl.)		Ages 15-64 (incl.)		Ages 65 and over	
	Persons	Percent	Persons	Percent	Persons	Percent	Persons	Percent
Baker Lake	298	60.6%	244	49.6%	237	48.2%	11	2.2%
Coral Harbour	147	60.7%	109	45.0%	131	54.1%	2	0.9%
Chesterfield Inlet	93	70.9%	71	54.2%	58	44.3%	2	1.5%
Daly Bay	41	74.5%	29	52.7%	26	47.3%	0	0%
Eskimo Point	222	54.1%	159	39.5%	229	56.8%	15	3.7%
Rankin Inlet	179	62.2%	139	48.3%	146	50.6%	3	1.1%
Repulse Bay	83	60.6%	60	43.7%	76	55.5%	1	0.8%
Whale Cove	110	62.2%	81	45.7%	91	51.5%	5	2.8%
Regional Totals	1,173	61%	892	46.3%	994	51.7%	39	2.0%
1961 Census % of Canadian Population		42%		34%		58.4%		7.6%
District Totals	5,156	60%	4,036	47.0%	4,396	51.2%	152	1.8%

COMPARISON OF CANADIAN AND ESKIMO AGE GROUPS





COMPARISON OF ESKIMO AND CANADIAN POPULATION BY FIVE YEAR AGE GROUPS



ARCTIC QUEBEC REGION	0-4		5-9		10-14		15-19		20-24		25-29		30-34		35-39		40-44		45-49		50-54		55-59		60-64		65-Over	
	M	F	M	F	M	F	M	F	M	F	M	F	M	F	M	F	M	F	M	F	M	F	M	F	M	F	M	F
Belcher Islands	11	9	11	5	11	8	5	3	5	5	3	2	10	7	4	2	0	2	3	2	1	4	1	0	2	6	0	1
Fort Chimo	42	48	44	42	26	30	37	27	6	14	22	20	18	16	11	14	4	14	12	5	8	7	7	8	4	8	5	8
George River	11	17	9	15	8	8	7	11	4	3	8	7	3	4	6	2	1	1	4	2	4	0	0	1	1	4	1	3
Ivuyivik	6	7	7	8	7	8	5	4	5	1	1	2	6	5	7	5	4	0	2	2	1	2	2	1	3	3	0	2
Koartak	10	7	9	8	6	3	2	2	1	3	2	0	3	8	5	2	1	0	1	3	1	1	0	0	1	3	0	2
Payne Bay	8	15	12	12	8	12	10	8	6	1	4	8	8	3	4	7	4	9	1	0	2	1	3	1	1	2	0	4
Port Burwell	12	6	1	4	5	5	5	7	4	3	2	6	5	2	4	1	2	0	3	3	3	1	2	4	2	1	0	0
Port Harrison	34	27	37	28	18	25	9	22	17	16	17	10	15	16	14	13	12	13	9	9	10	4	4	5	4	2	3	5
Povungnituk	49	51	45	37	30	33	38	24	14	15	20	7	18	16	13	15	9	7	14	14	11	8	5	7	4	2	4	6
Sugluk	29	34	23	25	20	14	16	15	7	4	10	16	15	9	5	7	8	2	6	6	3	3	3	5	1	2	2	6
Wakeham Bay	10	15	16	8	15	8	7	10	3	5	2	4	6	4	6	2	1	4	4	3	3	2	2	0	1	0	0	2
Great Whale	51	44	32	31	31	25	22	16	19	17	19	19	15	20	10	14	15	8	9	10	7	8	4	3	3	0	1	4
Regional Totals	273	280	246	223	185	179	163	149	91	87	110	101	122	110	89	84	61	60	68	59	54	41	33	35	27	33	16	43

FROBISHER BAY REGION

Arctic Bay	21	15	11	15	13	11	10	13	9	6	12	7	5	9	2	5	3	2	3	2	2	4	3	1	1	1	1	2
Broughton Island	13	24	11	22	9	9	19	6	6	12	6	6	6	4	6	2	1	4	2	3	9	3	0	4	1	1	0	0
Cape Dorset	41	35	32	27	29	21	17	28	19	14	14	19	11	12	12	7	11	12	9	4	3	7	5	5	2	3	6	2
Clyde River	20	28	18	21	24	13	17	18	10	12	6	5	8	7	3	7	7	4	4	2	4	2	1	1	0	0	0	0

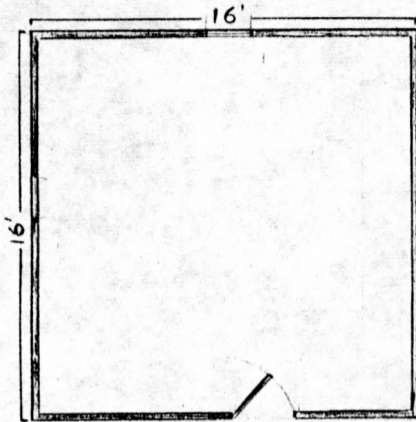
	0-4		5-9		10-14		15-19		20-24		25-29		30-34		35-39		40-44		45-49		50-54		55-59		60-64		65-Over	
	M	F	M	F	M	F	M	F	M	F	M	F	M	F	M	F	M	F	M	F	M	F	M	F	M	F	M	F
Frobisher Bay	85	100	96	93	44	55	48	46	35	37	39	36	42	37	27	30	28	18	22	10	8	7	12	6	6	2	6	9
Grise Fiord	5	7	7	3	4	5	0	3	1	1	-	1	2	1	2	3	3	0	0	0	0	1	0	2	0	0	0	0
Hall Beach	6	4	2	3	6	6	5	2	3	1	1	2	3	2	0	1	2	1	2	2	1	0	0	0	0	0	1	1
Igloodik	45	34	35	30	43	36	35	29	20	25	25	17	11	14	7	6	8	8	12	10	5	3	5	0	4	1	3	1
Lake Harbour	14	14	6	16	7	7	8	9	3	5	7	7	3	3	5	4	3	1	4	2	3	2	1	2	0	1	2	1
Padloping Island	3	5	6	5	5	4	0	1	1	2	3	2	1	2	2	0	1	2	1	0	1	1	1	1	0	0	0	1
Pangnirtung	52	48	51	45	39	46	34	26	18	15	25	20	24	21	20	15	8	10	9	6	7	4	2	3	3	3	6	8
Pond Inlet	24	34	20	22	25	23	20	11	14	10	12	11	6	8	9	8	4	4	4	3	3	5	2	3	1	1	2	2
Regional Totals	329	348	295	302	248	236	213	192	139	140	150	133	122	120	95	88	79	66	72	44	46	39	32	28	18	13	27	27

KBEWATIN REGION

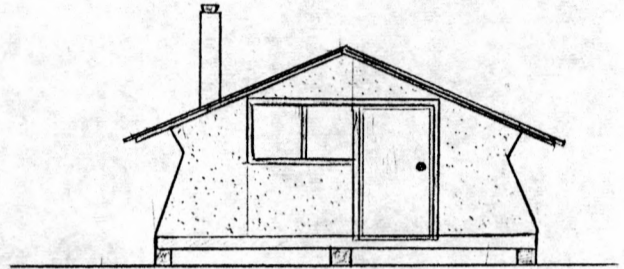
Baker Lake	65	64	39	25	20	31	27	16	18	20	16	20	14	13	19	13	9	9	4	10	9	7	6	3	2	2	3	8
Coral Harbour	22	23	14	22	9	19	17	15	9	8	10	10	10	10	9	3	8	3	2	5	3	4	3	1	1	0	0	2
Chesterfield Inlet	14	20	14	13	6	4	6	9	5	6	6	2	1	3	3	4	3	2	2	2	0	0	1	1	0	1	1	1
Daly Bay	8	3	2	5	5	6	4	4	2	2	0	1	1	2	1	1	2	2	2	0	1	0	0	0	0	1	0	0
Eskimo Point	27	36	28	29	17	22	24	27	16	16	11	15	13	14	16	11	10	9	11	8	7	4	6	5	4	2	7	8
Rankin Inlet	33	28	22	21	19	16	19	13	13	11	10	10	14	5	4	4	1	5	9	5	7	7	4	4	0	1	1	2
Repulse Bay	19	10	12	4	7	8	13	6	8	4	3	6	3	5	5	7	4	2	0	1	3	3	3	0	0	0	1	0
Whale Cove	19	13	9	16	17	7	8	14	8	4	4	7	5	7	6	5	8	4	1	4	1	1	2	0	2	0	2	3
Regional Totals	207	197	140	135	100	113	118	104	79	71	60	71	61	59	63	48	45	36	31	35	31	26	25	14	9	7	15	24

ESKIMO LOW COST HOUSING SUPPLIED TO THE ARCTIC DISTRICT

PLAN 319 - RIGID FRAME



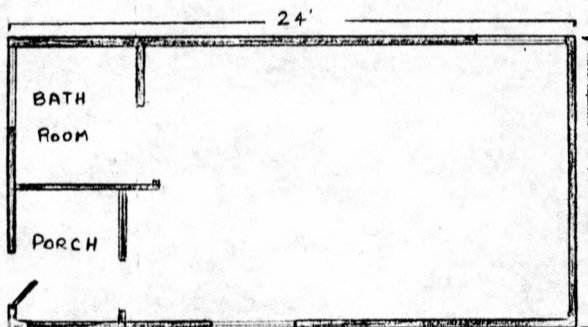
Floor Plan



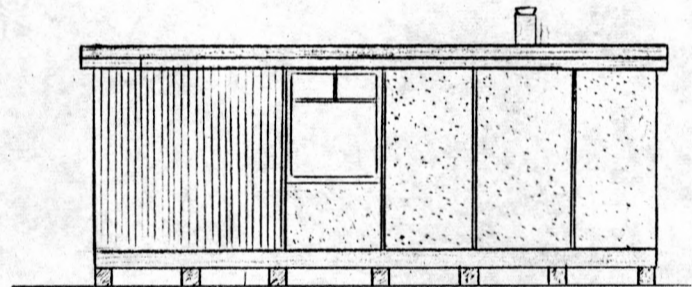
Front Elevation

<b>Details:</b>			
Number of rooms	1	Square footage of building	256
		Square footage of living and sleeping area	256
		Number supplied to Arctic District	335

PLAN 370A



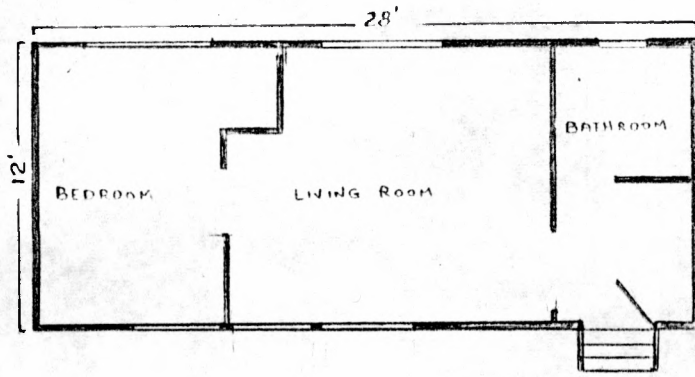
Floor Plan



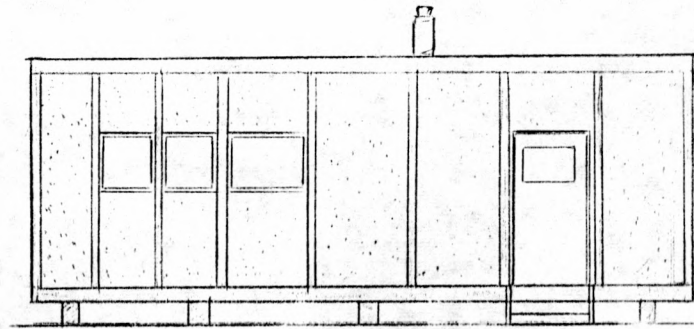
Front Elevation

<b>Details:</b>			
Number of rooms	1	Square footage of building	288
		Square footage of living and sleeping area	200
		Number supplied to Arctic District	587
		Average cost, F.O.B. Montreal	\$1,600.00

PLAN 395



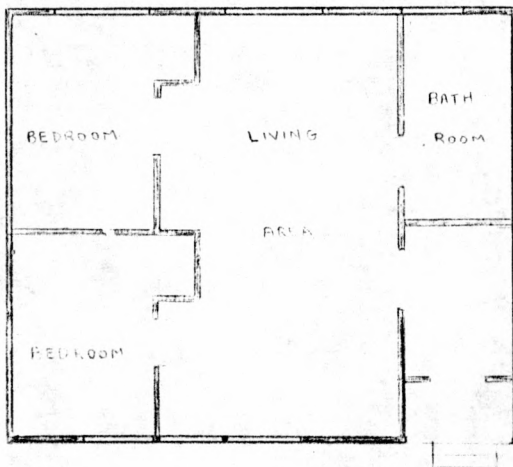
Floor Plan



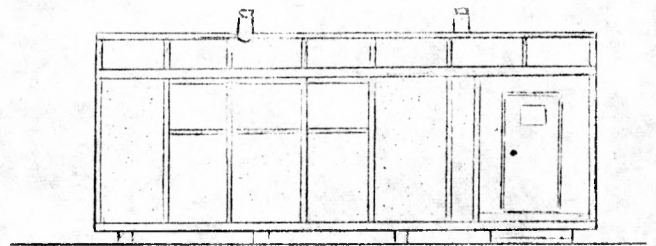
Front Elevation

<u>Details:</u>			
Number of rooms	2	Square footage of building	336
Square footage of living and sleeping area			252
Number supplied to Arctic District			29
Average cost, F.O.B. Montreal			\$2,500.00

PLAN 397



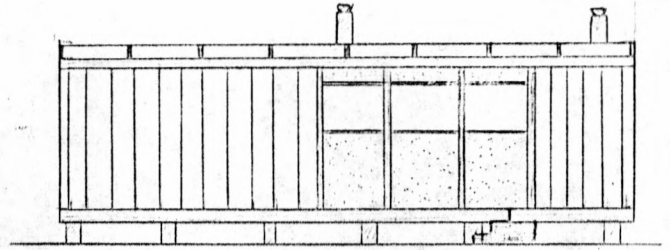
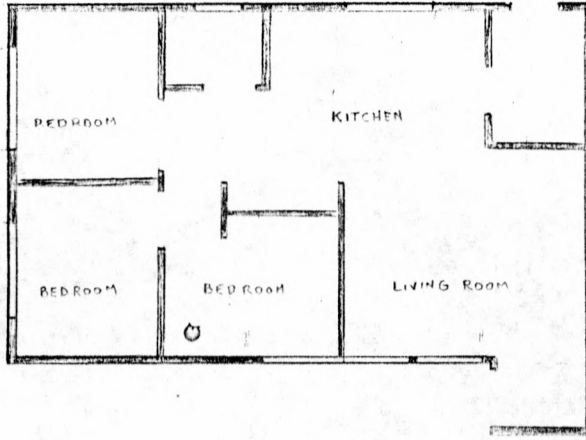
Floor Plan



Front Elevation

<u>Details:</u>			
Number of rooms	3	Square footage of building	672
Square footage of living and sleeping area			600
Number supplied to Arctic District			39
Average cost, F.O.B. Montreal			\$4,200.00

PLAN 396



Floor Plan

Front Elevation

Details:

Number of rooms	4	Square footage of building	640
Square footage of living and sleeping area			630
Number supplied to Arctic District			11
Average cost, F.O.B. Montreal			\$4,500.00

ARCTIC DISTRICT (WITH REGIONS)

