

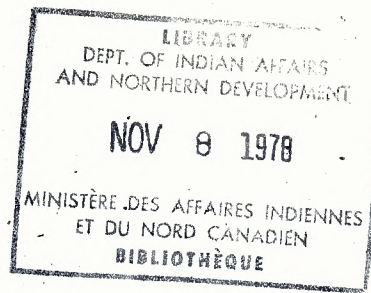
THE GRADE AGE PROGRESS PROJECT
A STUDY OF FOUR RESERVES
IN THE GEORGIAN BAY DISTRICT
FOR THE YEARS 1965-66 TO 1969-70

BY: Mrs. E. Ellis and
Pierre J. Stang

extra copy

E96.65.05

E44



THE GRADE AGE PROGRESS PROJECT

A STUDY OF FOUR RESERVES
IN THE GEORGIAN BAY DISTRICT
FOR THE YEARS 1965-66 TO 1969-70

By

Mrs. E.A. Ellis
Head
Special Services

and

Pierre J. Stang

Guidance Services Division
Education Branch
Department of Indian Affairs and Northern Development
Ottawa, Canada
July and August, 1970

REPORT ON GRADE-AGE-PROGRESS STUDY

(G.A.P. PROJECT)

1970

PURPOSE OF GRADE AGE PROGRESS STUDY

To determine the educational advancement of a sampling of Indian students from 1965 to 1969.

There has been some indication of general improvement in the educational level of Indian students over the past five years. However, there is a need for developing a means of gauging the educational advancement of these students. As a possible means of measurement of progress the G.A.P. Project was initiated.

A preliminary study of the statistics available relating to the educational advancement of Indian students in general, indicates an extremely high early school leaving rate (i.e., drop-out rate). However, some doubt exists as to the reliability of the national figures quoted and in particular as to whether the available figures include the students who may have left the in-school program but are still receiving occupational or vocational training of one kind or another.

It was decided to take a small group of students and determine if it is possible to obtain complete in-school and other training enrolment statistics for them for a five year period. If the figures were obtainable the next step would be to compare the enrolment figures for the selected group to the national figures presently available. By so doing, an indication of the reliability of the national figures currently being used and quoted could be obtained. At the same time, current trends in enrolment, grade attainment and age-grade retardation of the sample group could be identified.

PROCEDURE

1. Selection of Sample

In consultation with the Ontario Regional Superintendent of Education, the Georgian Bay District was chosen as the locale for the pilot study. The District is neither too remote nor too close to a large urban centre and educational facilities for in-school and post-school training have been available to the students for a number of years.

An examination of the reserves which comprise the Georgian Bay District indicated a fluctuation in the number of reserves, however four reserves have been a part of the District for at least ten years. These reserves are Simcoe, Christian Island, Parry Sound, and Bruce. The students from these four reserves were ultimately selected as the initial sample for the study.

2. Determination of Data Required for Preliminary Analysis

In order to obtain a complete picture of all students in training it was decided to develop age-grade charts for all students from the four reserves identified, who were enrolled in Grades K to 13 and/or vocational training during a five year period.

Departmental statistics were able to provide age-grade figures for Federal Day Schools, but did not have the ages of students enrolled in Provincial Schools. Vocational Education Division were able to provide age and enrolment figures for vocational, occupational and higher education trainees, but expressed some doubt as to whether their figures reflected 100% of the trainees from the District.

In order to obtain all the data required for the development of comprehensive age-grade charts and to verify the Vocational Education Division figures a researcher was sent to the Georgian Bay District Office at Orillia to search the pertinent files of the four reserves to obtain ages, grades and enrolment in all types of training for the students.

3. Methodology

The data obtained was organized as follows:

The data was arranged into five basic grade groups: K-3, 4-6, 7-9, 10-13, Vocational and Higher Education and into four basic age groups: 5-8, 9-12, 13-16, 17-25. The number of students enrolled in In-school and Post-school training in these age and grade groups were compiled and two sets of graphs were prepared which showed the increases and decreases in numbers of students over the five year period, from 1965-66 to 1969-70, in each age and grade group. Following this, the number of students who were two years or more age-grade retarded were isolated. Graphs were prepared showing the numbers and percentages of the students who were two years or more age-grade retarded as compared to the total school enrolment.

A list of the graphs and charts compiled for analysis follows:

NOTE: The graphs and charts are attached as Appendix "A".

- (1) Age-Grade tables showing enrolments in Federal Day Schools, Provincial Schools and Vocational and Higher Education of Indian students from four reserves in the Georgian Bay District over a five year period, 1965-66 to 1969-70.
- (2) A graph showing total enrolments of Indian students from four reserves in the Georgian Bay District for the five year period under study showing:
 - (a) all training
 - (b) in-school only
- (3) Distribution of enrolments by grade groups, of Indian students from four reserves in the Georgian Bay District, over a five year period.
- (4) Distribution of enrolments by age groups, of Indian students from four reserves in the Georgian Bay District, over a five year period.
- (5) Linear graphs of enrolments, for ages and grades of Indian students from four reserves in the Georgian Bay District over a five year period.
- (6) Chart of enrolments with numbers and percentages indicating annual increases or decreases in enrolments of Indian students from four reserves in the Georgian Bay District.

- (7) Bar graph of enrolments of Indian students from four reserves in the Georgian Bay District for all ages and grades.
- (8) Graph of enrolments for all ages and grades comparing two consecutive years at a time, over a five year period.
- (9) Chart representing number of Indian students two years or more Age-Grade retarded by grade groups; total enrolment by grade groups and the percentage of students two years or more Age-Grade retarded, from four reserves in the Georgian Bay District over a five year period.
- (10) Chart showing number of students two years or more Age-Grade retarded in each grade, over the five year period.
- (11) Charts showing grade distribution for a five year period of 14, 15 and 16 year-olds from four reserves in the Georgian Bay District who were two years or more Age-Grade retarded.
 - (11A) Graph showing number of 14-, 15-, and 16-year-olds, two years or more Age-Grade retarded, from four reserves in the Georgian Bay District over a five year period.
 - (11B) Graph showing the total number of students two years or more Age-Grade retarded compared to the total enrolments from four reserves in the Georgian Bay District over a five year period.
- (12) Graph showing the number of Indian students two years or more Age-Grade retarded, by grade groups, over a five year period.
- (13) Graph showing the percentages of Indian students two years or more Age-Grade retarded, compared to the total enrolments by grade groups, over a five year period.
- (14) Graph showing percentage of students two years or more Age-Grade retarded worked on the percentage of the total number who are Age-Grade retarded over a five year period.

ANALYSIS OF DATA

NOTE: The total Indian population on the four reserves being studied over the five year period was as follows:

1965	4,614
1966	3,699
1967	3,735
1968	3,402
1969	2,471

ANALYSIS OF ENROLMENTS

1. TOTAL ENROLMENTS

<u>YEAR</u>	<u>TOTAL ENROLMENT ALL GRADES IN-SCHOOL PLUS VOCATIONAL AND HIGHER EDUCATION</u>	<u>PERCENTAGE INCREASE OR DECREASE OVER PREVIOUS YEAR'S ENROLMENT</u>
1965-66	809	
1966-67	801	Decrease .80 %
1967-68	880	Increase 9.691%
1968-69	931	Increase 5.700%
1969-70	1,024	Increase 9.921%

(a) There was an increase in total enrolment in all years except 1966-67.

(b) Percentage increase in enrolments in 1969-70 over enrolments in 1965-66 was 26.57%.

2. IN-SCHOOL ENROLMENT * (K - GRADE 13)

<u>YEAR</u>	<u>ENROLMENT</u>	<u>PERCENTAGE INCREASE OR DECREASE OVER PREVIOUS YEAR'S ENROLMENT</u>	
1965-66	716		
1966-67	761	Increase	6.204%
1967-68	838	Increase	10.90 %
1968-69	888	Increase	5.810%
1969-70	971	Increase	9.308%

- (a) There was an increase in in-school enrolments in each of the five years.
- (b) The percentage increase in in-school enrolments in 1969-70 over 1965-66 was 35.440%.

3. VOCATIONAL AND HIGHER EDUCATION ENROLMENT

<u>YEAR</u>	<u>ENROLMENT</u>	<u>PERCENTAGE INCREASE OR DECREASE OVER PREVIOUS YEAR'S ENROLMENT</u>	
1965-66	93		
1966-67	40	Decrease	56.92 %
1967-68	42	Increase	5.00 %
1968-69	43	Increase	2.16 %
1969-70	53	Increase	23.11 %

- (a) There was an increase in enrolments each year from 1966-67 to 1969-70.

- (b) The percentage increase in enrolments in 1969-70 over 1966-67 was 32.5%.
- (c) The reason for the exceptionally high enrolment in 1965-66 has not been positively identified, but was possibly due to special courses being offered at Georgian College and by the Canada Manpower Centre in Orillia. The high enrolment figures for 1965-66 have therefore not been used in calculating the long term trend in enrolments.

4. ENROLMENT BY GRADE GROUPS

- (i) Grades K - 3

<u>YEAR</u>	<u>ENROLMENT</u>	<u>PERCENTAGE INCREASE OR DECREASE OVER PREVIOUS YEAR'S ENROLMENT</u>	
1965-66	297		
1966-67	322	Increase	8.124%
1967-68	315	Decrease	2.56 %
1968-69	313	Decrease	.200%
1969-70	410	Increase	30.310%

- (a) There were increases in 1966-67 and 1969-70 and decreases in 1967-68 and 1968-69.
- (b) The percentage increase of enrolment in 1969-70 over 1965-66 was 38.0%.

(ii) Grades 4 - 6

<u>YEAR</u>	<u>ENROLMENT</u>	<u>PERCENTAGE INCREASE OR DECREASE OVER PREVIOUS YEAR'S ENROLMENT</u>	
1965-66	190		
1966-67	217	Increase	14.40 %
1967-68	238	Increase	9.147%
1968-69	250	Increase	5.10 %
1969-70	265	Increase	6.00 %

(a) There was an increase each year from 1965-66 to 1969-70.

(b) The percentage increase of enrolments in 1969-70 over 1965-66 was 39.4%.

(iii) Grades 7 - 9

<u>YEAR</u>	<u>ENROLMENT</u>	<u>PERCENTAGE INCREASE OR DECREASE OVER PREVIOUS YEAR'S ENROLMENT</u>	
1965-66	184		
1966-67	176	Decrease	4.64 %
1967-68	222	Increase	26.24 %
1968-69	261	Increase	17.126%
1969-70	224	Decrease	14.1 %

(a) There was an increase over the previous year's enrolment in 1967-68 and 1968-69 and a decrease from the previous year's enrolment in 1966-67 and in 1969-70.

(b) There was a percentage increase of enrolment in 1969-70 over 1965-66 of 22.2%.

(iv) Grades 10 - 13

<u>YEAR</u>	<u>ENROLMENT</u>	<u>PERCENTAGE INCREASE OR DECREASE OVER PREVIOUS YEAR'S ENROLMENT</u>	
1965-66	45		
1966-67	46	Increase	2.10 %
1967-68	63	Increase	36.44 %
1968-69	64	Increase	1.37 %
1969-70	72	Increase	12.05 %

(a) There was an increase each year over the previous year's enrolment during the five year period.

(b) The percentage increase of enrolments in 1969-70 over 1965-66 was 60%.

NOTE: Of the 72 students in Grade 10 - 13 in 1969-70 two were in Grade 13; 9 in Grade 12; 14 in Grade 11; and 47 in Grade 10.

5. ENROLMENT BY AGE GROUPS

(i) Ages 5 - 8

<u>YEAR</u>	<u>ENROLMENT</u>	<u>PERCENTAGE INCREASE OR DECREASE OVER PREVIOUS YEAR'S ENROLMENT</u>	
1965-66	- 262		
1966-67	259	Decrease	1.38 %
1967-68	265	Increase	2.82 %
1968-69	265	Increase	NIL
1969-70	374	Increase	41.35 %

- (a) There was an increase over the previous year's enrolment in 1967-68 and in 1969-70 and a decrease in 1966-67. In 1968-69 enrolments remained the same.
- (b) The percentage increase of enrolments in 1969-70 over 1965-66 was 42.196%.

(ii) Ages 9 - 12

<u>YEAR</u>	<u>ENROLMENT</u>	<u>PERCENTAGE INCREASE OR DECREASE OVER PREVIOUS YEAR'S ENROLMENT</u>	
1965-66	224		
1966-67	268	Increase	19.144%
1967-68	268	Increase	7.124%
1968-69	306	Increase	6.072%
1969-70	321	Increase	4.276%

- (a) There was an increase of 9 - 12 year olds enrolled in school each year for the five year period.
- (b) The percentage increase of 9 - 12 year olds enrolled in 1969-70 over 1965-66 was 43.68%.

(iii) Ages 13 - 16

<u>YEAR</u>	<u>ENROLMENT</u>	<u>PERCENTAGE INCREASE OR DECREASE OVER PREVIOUS YEAR'S ENROLMENT</u>	
1965-66	211		
1966-67	192	Decrease	9.1 %
1967-68	202	Increase	5.40 %
1968-69	259	Increase	78.44 %
1969-70	216	Decrease	16.156%

- (a) There was an increase of 13 - 16 year olds in training in 1967-68 and 1968-69 and a decrease from the previous year's enrolment in 1966-67 and 1969-70.
- (b) The percentage increase of enrolments in 1969-70 over 1965-66 was 2.78%.

(iv) Ages 17 - 25

<u>YEAR</u>	<u>ENROLMENT</u>	<u>PERCENTAGE INCREASE OR DECREASE OVER PREVIOUS YEAR'S ENROLMENT</u>	
1965-66	112		
1966-67	82	Decrease	26.88 %
1967-68	125	Increase	52.36 %
1968-69	101	Decrease	19.25 %
1969-70	113	Increase	11.89 %

- (a) There was an increase of 17 - 25 year olds in training in 1967-68 and 1969-70 and a decrease from the previous year's enrolments in 1966-67 and 1968-69.
- (b) The percentage increase of enrolments of 17 - 25 year olds in training in 1969-70 over 1966-67 was 27.76%.

SUMMARY OF ENROLMENTS

1. Over the five year period of the study there has been an overall increase in enrolments for each age and grade group, even though there were decreases in certain years. For grades, the most noticeable increases were in the Grade 4 to Grade 6 group where enrolments rose from 190 in 1965 to 265 in 1969, an increase of 39.4%; and in the Grade 10 to Grade 13 group where enrolments rose from 45 students in 1965 to 72 in 1969, an increase of 60%. For ages, the most noticeable increases were in the 5 to 8 year old age group where enrolments rose from 262 in 1965 to 374 in 1969, an increase of 42%; and in the 9 to 12 age group where enrolments rose from 224 in 1965 to 321 in 1969, an increase of 43%.
2. The smallest increases in enrolments were in the Grades 7 - 9 group (13.1%) and the age 13 - 16 group (2.7%).

ANALYSIS OF AGE-GRADE RETARDATION

NOTE: Only those students who were 2 years or more Age-Grade retarded are represented in the following figures.

1. AGE-GRADE RETARDATION - ALL GRADES

Total numbers of students who were 2 years or more Age-Grade retarded (all grades).

<u>YEAR</u>	<u>NUMBER AGE-GRADE RETARDED</u>	<u>PERCENTAGE OF TOTAL GRADE ENROLMENT</u>	<u>PERCENTAGE INCREASE OR DECREASE OVER PREVIOUS YEAR'S PERCENTAGE</u>
1965-66	176 of 716	24.4 %	
1966-67	202 of 761	26.4 %	Increase 8.2 %
1967-68	292 of 838	34.7 %	Increase 23.9 %
1968-69	301 of 888	33.7 %	Decrease 2.8 %
1969-70	250 of 956	25.7 %	Decrease 23.7 %

- (a) There were increases in 1966-67 and 1967-68 in the percentage of students who were two years or more age-grade retarded and decreases in the age-grade retardation percentages in 1968-69 and 1969-70.
- (b) There was an overall increase of 5.3% in age-grade retardation in 1969-70 as compared to 1965-66. U S

2. AGE-GRADE RETARDATION BY GRADE GROUPS
(IN-SCHOOL PROGRAM ONLY)

(i) Grade K - 3

<u>YEAR</u>	<u>NUMBER AGE-GRADE RETARDED</u>	<u>PERCENTAGE OF TOTAL GRADE ENROLMENT</u>	<u>PERCENTAGE INCREASE OR DECREASE OVER PREVIOUS YEAR'S PERCENTAGE</u>	
1965-66	38. of 297	12.2 %		
1966-67	33 of 322	10.8 %	Decrease	11.4 %
1967-68	31 of 315	9.2 %	Decrease	14.8 %
1968-69	43 of 313	13.7 %	Increase	48.9 %
1969-70	38 of 410	9.2 %	Decrease	32.8 %

(a) There was an increase in the percentage of Grade K - 3 students who were Age-Grade retarded in 1968-69 and a decrease in all other years.

(b) The percentage decrease in Age-Grade retardation of students in Grades K - 3 in 1969-70 as compared to 1965-66 was 24.5%.

(ii) Grades 4 - 6

<u>YEAR</u>	<u>NUMBER AGE-GRADE RETARDED</u>	<u>PERCENTAGE OF TOTAL GRADE ENROLMENT</u>	<u>PERCENTAGE INCREASE OR DECREASE OVER PREVIOUS YEAR'S PERCENTAGE</u>	
1965-66	53 of 190	27.8 %		
1966-67	70 of 217	32.2 %	Increase	15.8 %
1967-68	82 of 238	34.4 %	Increase	6.8 %
1968-69	98 of 250	39.2 %	Increase	13.9 %
1969-70	46 of 265	17.3 %	Decrease	55.8 %

- (a) There was an increase in the percentage of Grades 4 - 6 students who were Age-Grade retarded every year except in 1969-70 when there was a sharp reduction in Age-Grade retardation.
- (b) The percentage decrease in Age-Grade retardation of students in Grades 4 - 6 in 1969-70 as compared to 1965-66 was 37.7% *AS*

(iii) Grades 7 - 9

<u>YEAR</u>	<u>NUMBER AGE-GRADE RETARDED</u>	<u>PERCENTAGE OF TOTAL GRADE ENROLMENT</u>	<u>PERCENTAGE INCREASE OR DECREASE OVER PREVIOUS YEAR'S PERCENTAGE</u>
1965-66	68 of 184	36.9 %	
1966-67	79 of 176	44.8 %	Increase 21.4 %
1967-68	125 of 222	56.3 %	Increase 25.6 %
1968-69	117 of 261	44.8 %	Decrease 20.4 %
1969-70	108 of 209	51.6 %	Increase 15.1 %

- (a) There were increases in the percentage of Grade 7 - 9 students who were Age-Grade retarded in 1966-67, 1967-68 and 1969-70. There was a decrease in 1968-69.
- (b) The percentage increase in Age-Grade retardation of students in Grades 7 - 9 in 1969-70 as compared to 1965-66 was 39.8%. *S*

(iv) Grades 10 - 13

<u>YEAR</u>	<u>NUMBER AGE-GRADE RETARDED</u>	<u>PERCENTAGE OF TOTAL GRADE ENROLMENT</u>	<u>PERCENTAGE INCREASE OR DECREASE OVER PREVIOUS YEAR'S PERCENTAGE</u>	
1965-66	17 of 45	37.3 %		
1966-67	20 of 46	43.4 %	Increase	16.3 %
1967-68	54 of 63	85.8 %	Increase	97.6 %
1968-69	43 of 64	67.1 %	Decrease	21.7 %
1969-70	58 of 72	80.5 %	Increase	19.9 %

(a) There were increases in the percentage of Grade 10 - 13 students who were Age-Grade retarded in 1966-67, 1967-68 and in 1969-70. There was a decrease from the previous year in 1968-69.

(b) The percentage increase in Age-Grade retardation of students in Grades 10 - 13 in 1969-70 as compared to 1965-66 was 115.8%.

3. AGE-GRADE RETARDATION OF 13 - 16 YEAR OLDS
(IN-SCHOOL PROGRAM ONLY)

It was previously noted that the smallest increase in enrolments over the five year period of the study was in the 13 to 16 year old age group. Therefore, this group has been singled out for further age-grade retardation analysis.

(i) 13 YEAR OLDS

<u>YEAR</u>	<u>TOTAL NUMBER OF 13 YEAR OLDS IN-SCHOOL</u>	<u>NUMBER AGE-GRADE RETARDED</u>	<u>% AGE-GRADE RETARDED</u>
1965-66	46	18	39.6 %
1966-67	63	27	42.54 %
1967-68	55	24	43.35 %
1968-69	57	33	57.51 %
1969-70	42	16	38.4 %

(a) There were increases in the percentage of 13 year olds who were age-grade retarded in 1965-66, 1966-67 and 1967-68 and a decrease in 1969-70.

(b) The percentage decrease in age-grade retardation of 13 year olds in 1969-70 as compared to 1965-66 was 3.0%.

(ii) 14 YEAR OLDS

<u>YEAR</u>	<u>TOTAL NUMBER OF 14 YEAR OLDS IN-SCHOOL</u>	<u>NUMBER AGE-GRADE RETARDED</u>	<u>% AGE-GRADE RETARDED</u>
1965-66	53	14	26.22 %
1966-67	50	24	48.0 %
1967-68	48	30	62.24 %
1968-69	69	37	53.43 %
1969-70	45	28	62.10 %

- (a) There were increases in the percentage of 14 year olds who were age-grade retarded in every year except 1968-69 where there was a decrease.
- (b) The percentage increase in age-grade retardation of 14 year olds in 1969-70 as compared to 1965-66 was 136.8%.

(iii) 15 YEAR OLDS

<u>YEAR</u>	<u>TOTAL NUMBER OF 15 YEAR OLDS IN-SCHOOL</u>	<u>NUMBER AGE-GRADE RETARDED</u>	<u>% AGE-GRADE RETARDED</u>
1965-66	53	27	50.50 %
1966-67	42	21	50.00 %
1967-68	46	35	76.04 %
1968-69	62	41	66.66 %
1969-70	59	31	52.32 %

- (a) There was an increase in the percentage of 15 year olds who were age-grade retarded in 1967-68 and decreases in 1968-69 and 1969-70.
- (b) The percentage increase in age-grade retardation of 15 year olds in 1969-70 as compared to 1965-66 was 3.5%.

(iv) 16 YEAR OLDS

<u>YEAR</u>	<u>TOTAL NUMBER OF 16 YEAR OLDS IN-SCHOOL</u>	<u>NUMBER AGE-GRADE RETARDED</u>	<u>% AGE-GRADE RETARDED</u>
1965-66	42	24	57.6 %
1966-67	32	22	68.24 %
1967-68	40	35	87.20 %
1968-69	38	33	86.32 %
1969-70	47	41	87.11 %

- (a) There were increases in the percentage of 16 year olds who were age-grade retarded in 1966-67, 1967-68 and 1969-70, with a slight decrease in 1968-69.
- (b) The percentage increase in age-grade retardation of 16 year olds in 1969-70 compared to 1965-66 was 51.2%.

SUMMARY

1. Enrolment Trends of the Sample Group

Over the five year period of the study there has been an overall increase in enrolments for each grade and age group.

- (a) The largest percentage increase in grade enrolments in 1969-70 over 1965-66, is in the Grade 10 - 13 group, which shows an increase of 60.0%.
- (b) The smallest percentage increase in grade enrolments in 1969-70 over 1965-66 is in the Grade 7 - 9 group, which shows an increase of 22.2%.
- (c) The largest percentage increase in age group enrolments in 1969-70 over 1965-66 is in the age 9 - 12 year old group which shows an increase of 43.3%.
- (d) The smallest percentage increase in age group enrolments in 1969-70 over 1965-66 is in the 13 to 16 year old age group which shows an increase of 2.3%.

2. Age-Grade Retardation Trends of the Sample Group

While there have been some decreases noted in the percentages of students who are age-grade retarded in a few specific groups, there has been an overall increase in age-grade retardation over the five year period of the study of 5.3%.

- (a) Age-grade retardation has decreased in Grades K - 3 in 1969-70 as compared to 1965-66 by 24.5%, and in Grades 4 - 6 by 37.7%.
- (b) Age-grade retardation has increased in Grades 7 - 9 in 1969-70 as compared to 1965-66 by 39.8%, and in Grades 10 - 13 by 115.8%.
- (c) Age-grade retardation appears to be most severe in the 14 year old group with over 60% of all 14 year olds in school two years or more age grade retarded and in the 16 year old group where a whopping 87% are two years or more age grade retarded. These percentages have remained virtually unchanged over the past three years.

3. Retention Trends of the Sample Group

Fifty-one students were enrolled in Grade 8 in 1965-66, and nine students were enrolled in Grade 12 in 1969-70, indicating a raw retention rate of 17.6%. However, an additional 15 students aged 18 and 19 were enrolled in post-school training programs in 1969-70. If even half of these 15 were included in the Grade 8 figures for 1965-66, the raw retention rate would become 33-1/3%. While it is impossible to make any assumptions based on these few figures, the national figure on drop-outs being quoted (at 97%) may not be taking into consideration the students who are continuing in training beyond the in-school program and who should not therefore be classified as "drop-outs".

Further investigation is indicated to determine whether the trends identified in this survey are duplicated in other Regions and Districts.

4. Assessment of Survey Method

The Ontario Region and the Georgian Bay District staff were most co-operative in making their files and records available to the research assistant. The research assistant, in turn, obtained the raw data with the least possible disruption to regular District office routine.

The collection of the raw data required approximately two weeks of search in the District office files, but it is doubtful whether the information could have been obtained at the present time by any less time-consuming method.

The greatest difficulty encountered was in determining the exact number of students on post-school training programs at any given time. This was due primarily to the fact that neither Canada Manpower nor Georgian College maintain records of enrolments according to ethnicity.

The research assistant's comments on the survey are attached as Appendix "B".

CONCLUSIONS

1. The on-reserve population of the four reserves studied has declined over the five year period.
2. School enrolments have increased substantially in all grades and for all ages over the five year period.
3. Age-grade retardation has decreased in the elementary grades (K-6) over the five year period, concurrent with an increase in enrolments of approximately 40%.
4. Age-grade retardation has increased in the senior grades (7-13) over the five year period.
5. The highest percentage increase in age-grade retardation over the five year period was in the 14-year-old age group.
6. Pupil retention rates have improved over the five year period.
7. The sample makes questionable the national "drop-out" figure of 97% which is continually being quoted.
8. G.A.P. projects in other Regions are indicated, to determine whether the enrolment trends, age-grade retardation trends and retention rates identified in this project reflect a national trend.

KEY:

2--F.D.S.

2--Provincial Schools

Vocational & Post-School in Roman Numerals

Age 5
and Under

Age 6

7

8

9

10

11

12

13

14

15

16

17

18

19

20

21

22

23

24

25 and
over

K	1	2	3	4	5	6	7	8	9	10	11	12	13	Special Voc.	Formal Voc.	Upgrading	Prof.	University	Nursing	Teaching
24	16																			
12																				
1	40	11																		
1	13	3																		
	9	33	1																	
	16	7	3	2																
	1	6	23	7																
	8	12	12	1																
			10	13	3															
	1	6	6	9	1															
		1	3	17	10	1														
		5	10	14	2															
			1	4	17	11														
			2	2	11	7														
				2	16	7	2	1												
					7	4	4													
				1	1	13	3	5												
					2	1	9	6	5											
					2	1		5												
							11	16	18											
						1	3	3												
							8	12	21	5										
							1	1												
								2	20	12	5	1			X					
									7	7		3			XIX					
										1	7	2			XX					
												2			V		II			
															IX					
															VIII					
															IV					
															IV					
															XI		I			

KEY:

2--F.D.S.

2--Provincial Schools

Vocational & Post-School in Roman Numerals

	K	1	2	3	4	5	6	7	8	9	10	11	12	13	Special Voc.	Formal Voc.	Upgrading	Prof.	University	Nursing	Teaching
Age 5 and Under	24 12	18																			
Age 6	3 8	37 7	9																		
7		11 23	36 1	7																	
8			12 2	28 10	4 6	1															
9				1 7	17 20	21 10	2														
10					3 1	13 12	21 8	4 7	4												
11						5 4	9 13	10 7	2 4	2											
12					1 2	2 7	7 4	18 4	4 8												
13						1 3	1 4	18 20	5 5	6											
14							1 1	9 3	5 9	5 9	2 2										
15								1 8	1 10	1 15	1 6										
16								1 1	2 7	2 11	9	1				V					
17										13	4	3	2			X					
18										6	2	2	2			VI					
19											3	6	3	1		X					
20																IV					
21																I					
22																I					
23																I					
24																					
25 and over																II					

2---F.D.S.

2---Provincial Schools

Vocational & Post-School in Roman Numerals

	K	1	2	3	4	5	6	7	8	9	10	11	12	13	Special Voc.	Formal Voc.	Upgrading	Prof.	University	Nursing	Teaching
Age 5 and Under	19	13																			
	14																				
Age 6	1	36	2																		
	14	17																			
7		17	22	13																	
		22	5																		
8		1	14	21	4																
		7	19	4																	
9			6	16	19	2															
		1	2	15	8	3															
10			4	12	17	3															
		1	8	16	6																
11				5	15	15	1	1													
			1	15	10	4	2														
12				1	6	12	4	3													
				4	22	10	13														
13					4	6	10	2													
				1	4	9	14	5													
14					1		11														
						2	16	17	1												
15							4	6													
						2	13	10	11												
16							1	2													
							3	6	23	4	1					V					
17										23	15	3				XI					
18										7	12	9	1			IV					
19											7	4	7			X	II			I	
20																III					
21																II		I			
22																					
23																					
24																I					
25 and over																I					

2--F.D.S.

2--Provincial Schools

Vocational & Post-School in Roman Numerals

	K	1	2	3	4	5	6	7	8	9	10	11	12	13	Special Voc.	Formal Voc.	Upgrading	Prof.	University	Nursing	Teaching
Age 5 and Under	16 12	10																			
Age 6	6 12	29 12	7 2	1																	
7		23 24	8 13	11																	
8			23 9	13 15	10 5																
9			2 1	12 12	9 16	8 1	1														
10			1 6	8 22	18 5	7 1	9														
11			1 1	10 11	13 18	7 5	3														
12					12 8	8 17	10 11	2 6													
13					1 4	3 19	6 11	5 2	4	2											
14						1 4	5 27	5 12	5	15											
15						1 9	10 21	18 3													
16						1			2	5	25	4	1			XI					
17									4	7	16	5	2			IV	I				
18										2	10	3	5			VII	II				
19											1	6	7	1		III	III				
20																III					
21																I					
22																					
23																			I		
24																I	I				
25 and over																II	II		I		

2--F.D.S.

2--Provincial Schools

Vocational & Post School in Roman Numerals

Age 5 and Under

Age 6

7

8

9

10

11

12

13

14

15

16

17

18

19

20

21

22

23

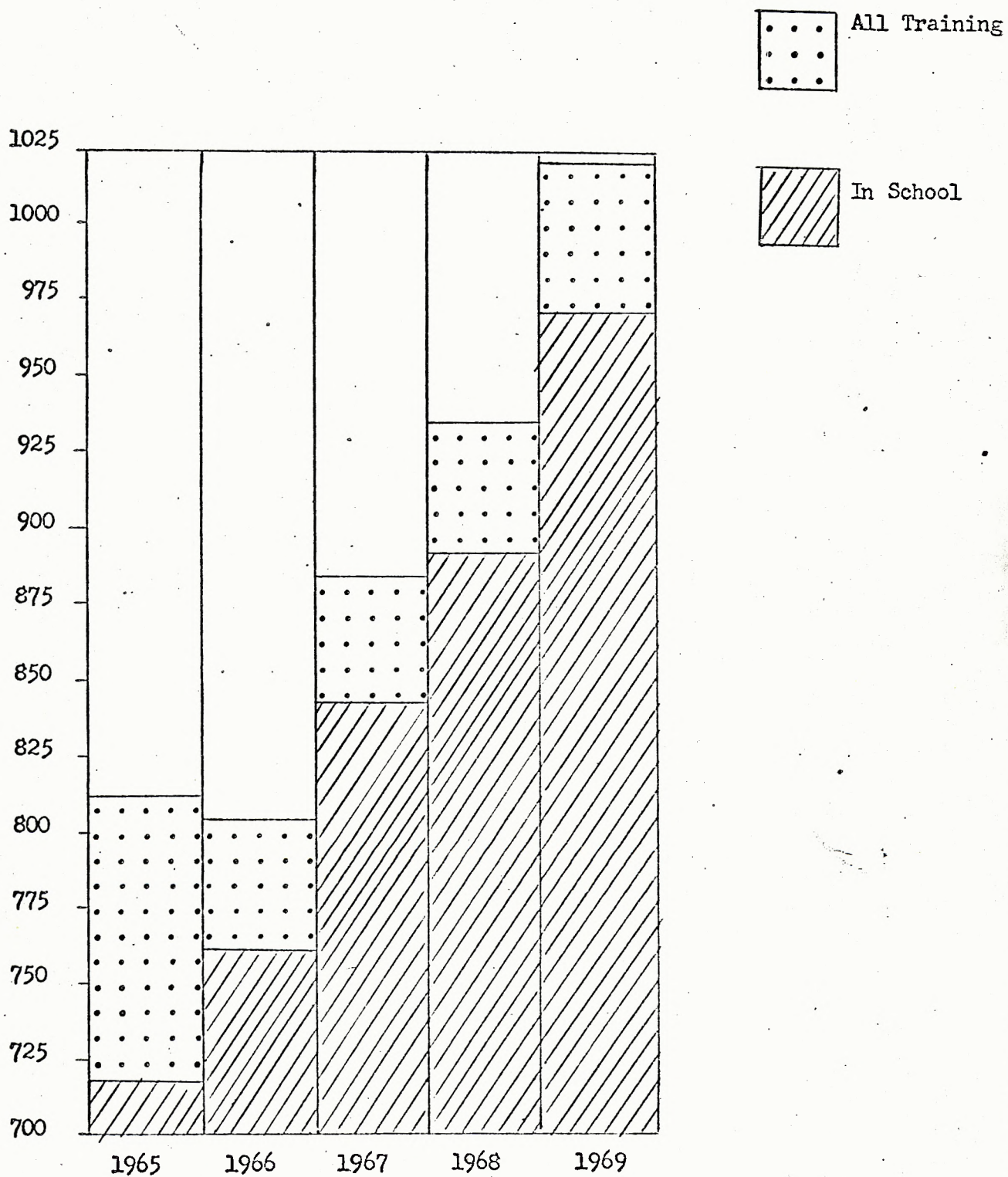
24

25 and over

K	1	2	3	4	5	6	7	8	9	10	11	12	13	Special Voc.	Formal Voc.	Upgrading	Prof.	University	Nursing	Teaching
69	14																			
16																				
60	13																			
12	8																			
	3	51	6	1																
	14	8																		
		13	35	14																
	13	13	8																	
			16	34	13															
		6	13	2	1															
			1	20	30	7														
		1	12	13	1															
				1	14	33		1												
			2	8	14	3	2													
					2	7	14	2												
		3		15	12	2														
							5	9												
						3	13	10	2											
							4	2												
						4	20	15												
								4												
							11	16	26	2										
							3	8	30	6					XVI					
									10	23	3				VIII					
									1	15	5	1			X					
									1	1	6	8	2		III	II				
															III					
															I					
															IV					
																I				
															IV	I				

Graph of Enrolments Per Year
From Four Reserves in the Georgian Bay
Education District.

Compiled August 1970



Distribution of Enrolments by Grade Groups
Students from Four Reserves in Georgian Bay District

Compiled August 1970

Note: 7 - 9 includes Opportunity and
Auxiliary Classes

1965-66F.D.S.ProvincialTotal

Grades:	K-3	-	180	K-3	-	117	K-3	-	297
	4-6	-	127	4-6	-	63	4-6	-	190
	7-9	-	24	7-9	-	160	7-9	-	184
	10-13	-	-	10-13	-	45	10-13	-	45
	Voc. &	-	-	Voc. &	-	93	Voc. &	-	93
	Higher			Higher			Higher		
	Educ.	-		Educ.			Educ.		809

1966-67

Grades:	K-3	-	207	K-3	-	115	K-3	-	322
	4-6	-	139	4-6	-	78	4-6	-	217
	7-9	-	36	7-9	-	140	7-9	-	176
	10-13	-	-	10-13	-	46	10-13	-	46
	Voc. &	-	-	Voc. &	-	40	Voc. &	-	40
	Higher			Higher			Higher		
	Educ.			Educ.			Educ.		801

1967-68

Grades	K-3	-	185	K-3	-	130	K-3	-	315
	4-6	-	122	4-6	-	116	4-6	-	238
	7-9	-	45	7-9	-	177	7-9	-	222
	10-13	-	-	10-13	-	63	10-13	-	63
	Voc. &	-	-	Voc. &	-	42	Voc. &	-	42
	Higher			Higher			Higher		
	Educ.			Educ.			Educ.		880

1968-69

Grades	K-3	-	172	K-3	-	141	K-3	-	313
	4-6	-	125	4-6	-	125	4-6	-	250
	7-9	-	70	7-9	-	191	7-9	-	261
	10-13	-	-	10-13	-	64	10-13	-	64
	Voc. &			Voc. &	-	43	Voc. &	-	43
	Higher			Higher			Higher		
	Educ.			Educ.			Educ.		931

1969-70

F. D. S.

Grades	K-3	-	281
	4-6	-	176
	7-9	-	52
	10-13	-	
	Voc. &	-	
	Higher		
	Educ.		

Provincial

K-3	-	129
4-6	-	89
7-9	-	172
10-13	-	72
Voc. &	-	53
Higher Educ.		

Total

K-3	-	410	
4-6	-	265	
7-9	-	224	
10-13	-	72	
Voc. &	-	53	
Higher			
Educ.			
		<u> </u>	1,024

Distribution of Enrolments by Age Groups
Students From Four Reserves Georgian Bay District

Compiled August 1970

AGES

1965-66

<u>F.D.S.</u>		<u>Provincial</u>		<u>Total</u>	
5-8:	172	5-8:	90	262	
9-12:	119	9-12:	105	224	
13-16:	40	13-16:	171	211	
17-25:		17-25:	112	<u>112</u>	809

1966-67

5-8:	189	5-8:	70	259	
9-12:	140	9-12:	128	268	
13-16:	53	13-16:	139	192	
17-25:		17-25:	82	<u>82</u>	801

1967-68

5-8:	163	5-8:	102	265	
9-12:	142	9-12:	146	288	
13-16:	47	13-16:	155	202	
17-25:		17-25:	125	<u>125</u>	880

1968-69

5-8:	161	5-8:	104	265	
9-12:	158	9-12:	148	306	
13-16:	48	13-16:	211	259	
17-25:		17-25:	101	<u>101</u>	931

1969-70

5-8:	281	5-8:	93	374	
9-12:	203	9-12:	118	321	
13-16:	25	13-16:	191	216	
17-25:		17-25:	113	<u>113</u>	1024

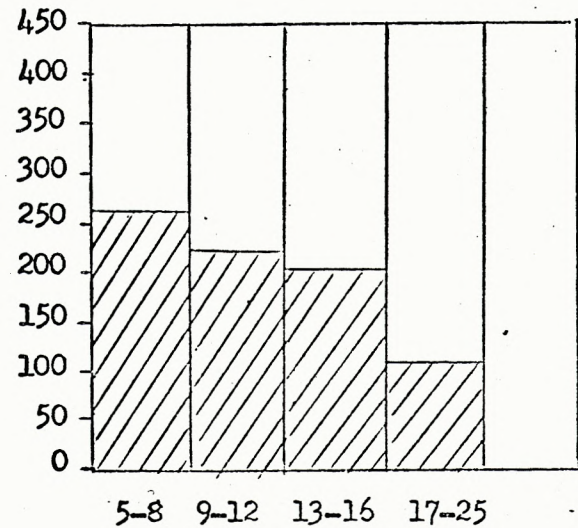
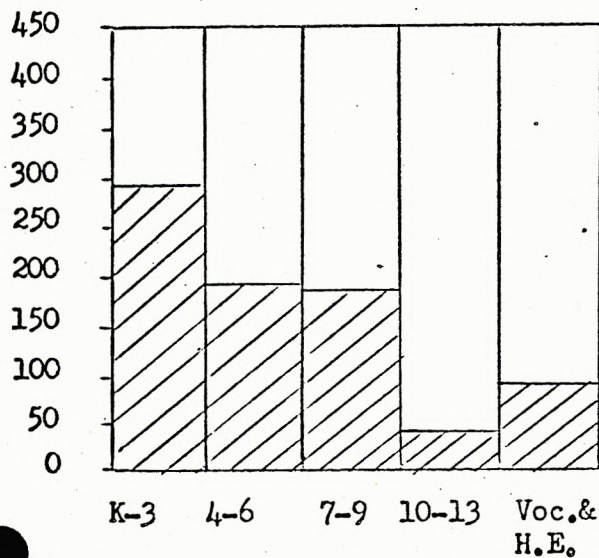
Distribution of Enrolments by Grade and Age
Students from Four Reserves in Georgian Bay District

Compiled August 1970

GRADE

1965 - 66

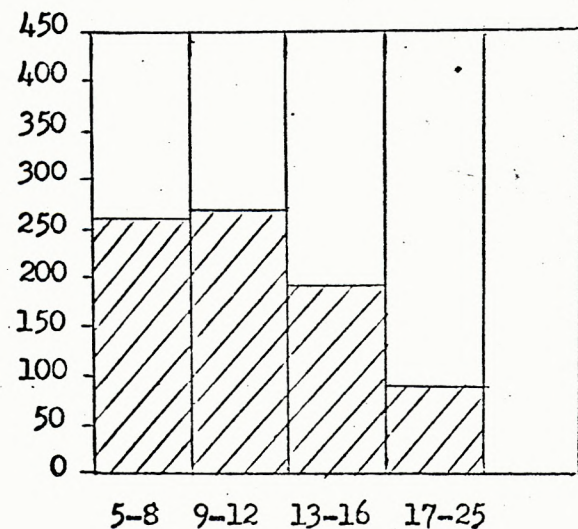
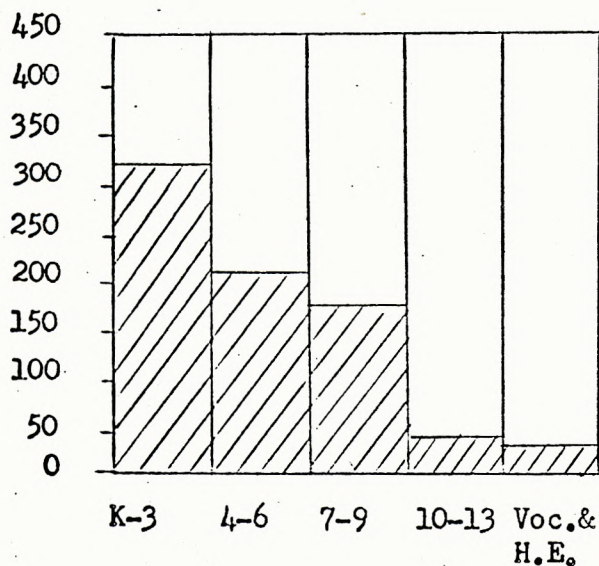
AGE



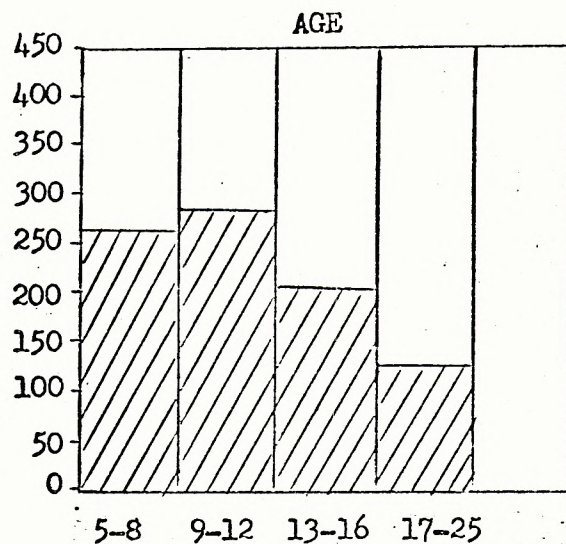
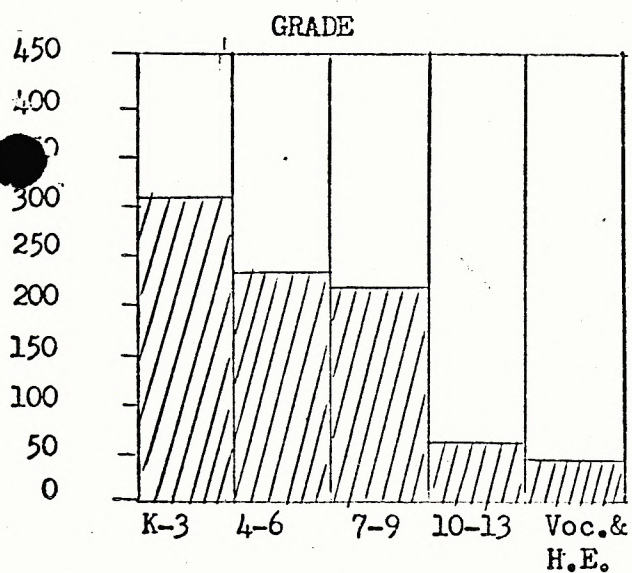
GRADE

1966 - 67

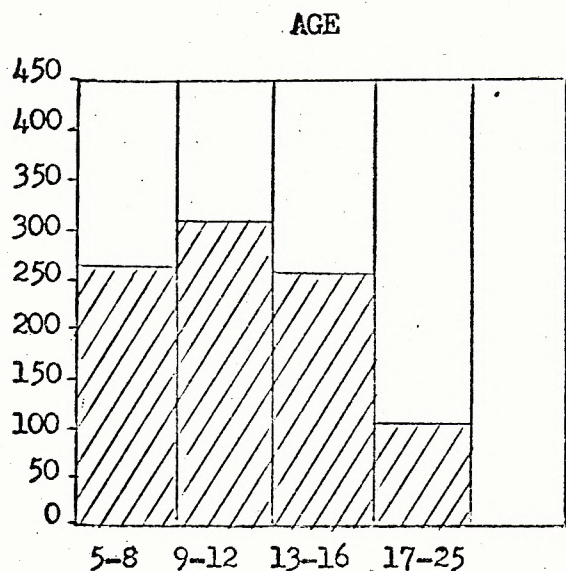
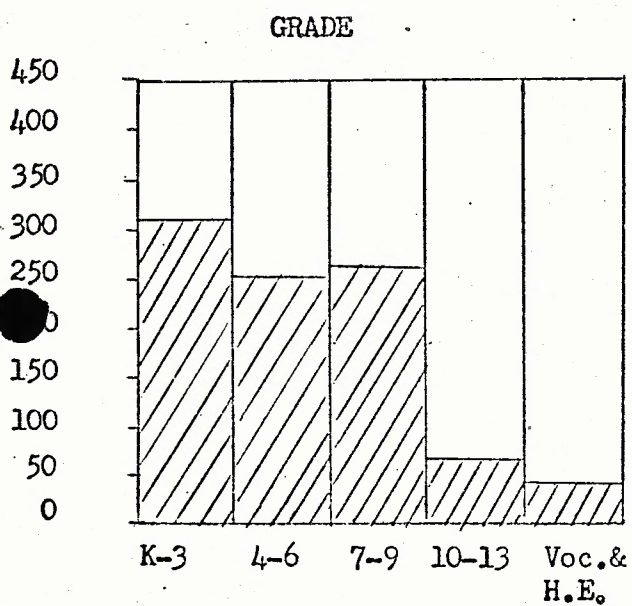
AGE



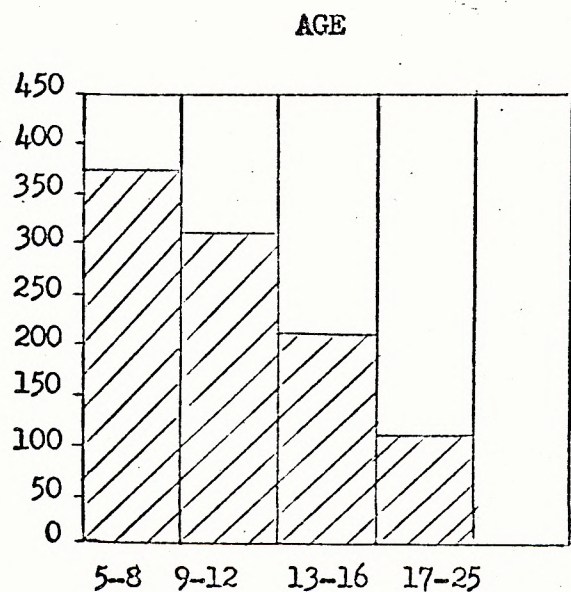
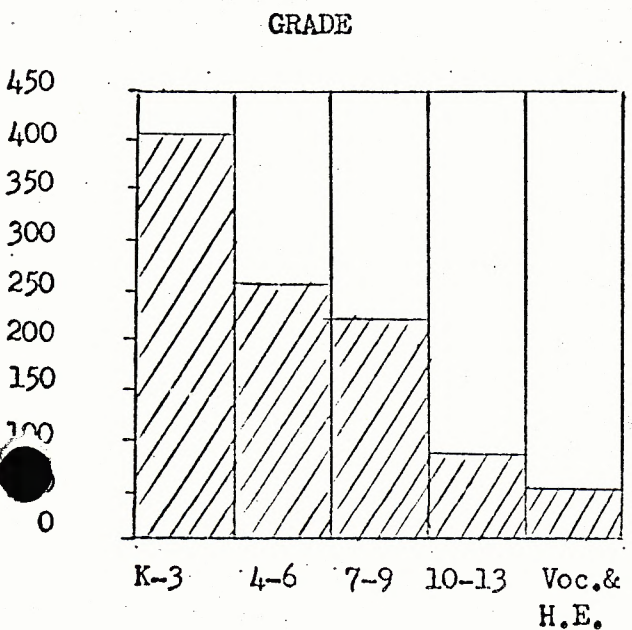
1967 - 68



1968 - 69



1969-70



Enrolments of Students
From Four Reserves in Georgian Bay District
With Annual Percentage of Increase or Decrease
From 1965-66 to 1969-70

Compiled August 1970

grades	Enrolments					Numbers + or -				Percentage + or -			
	1965 -66	1966 -67	1967 -68	1968 -69	1969 -70	1965 -66	1966 -67	1967 -68	1968 -69	1965 -66	1966 -67	1967 -68	1968 -69
-3	297	322	315	313	410	+25	- 7	- 2	+97	+8.12	-2.56	-2.00	+30.3
-6	190	217	238	250	265	+27	+21	-12	+15	+14.4	+9.14	-5.10	+6.00
-9	184	176	222	261	209	- 8	+46	+39	-52	-4.64	+26.2	+17.1	-19.2
10-13	45	46	63	64	87	+ 1	+17	+23	+23	+2.10	+36.4	+1.37	+35.6
higher education	93	40	42	43	53	-53	+ 2	+ 1	+10	-56.9	+5.00	+2.16	+23.1

Total Enrolment by Grade and Age Groups
From Four Reserves in the Georgian Bay District: 4,445
1965 to 1969

Compiled August 1970

KEY:

1965-66

1966-67

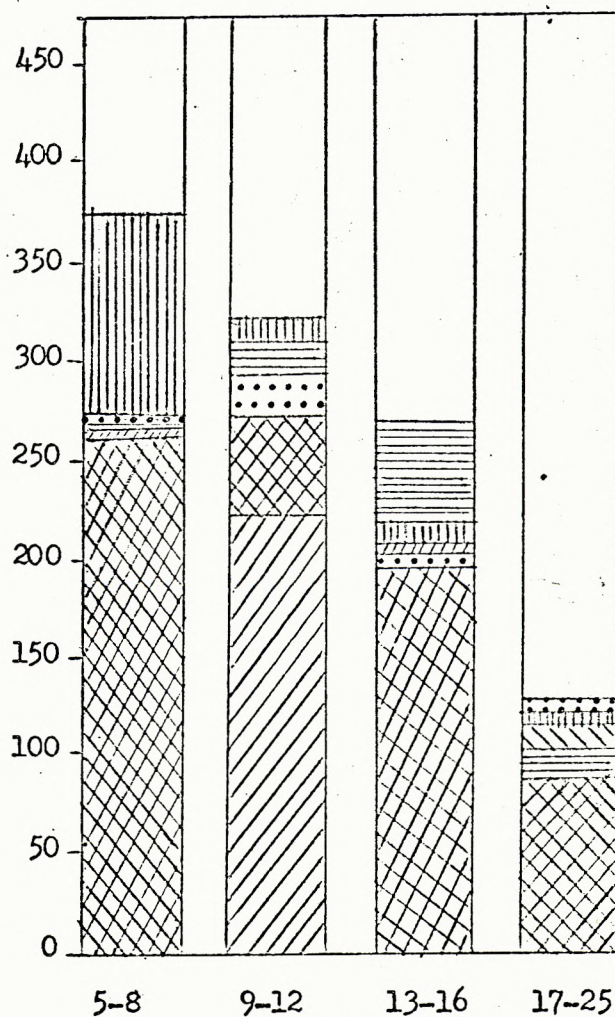
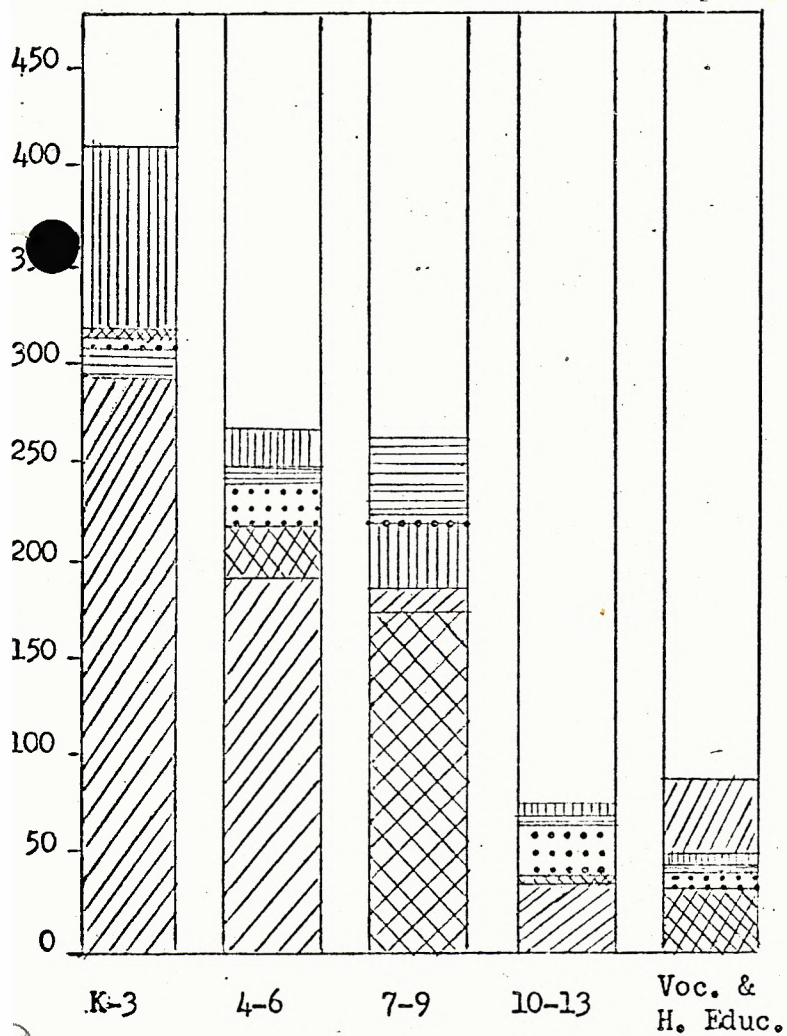
1967-68

1968-69

1969-70

GRADES

AGES



Comparison of Enrolments by Age Groups
From Four Reserves in the Georgian Bay District Over
A Five Year Period

Compiled August 1970

KEY:

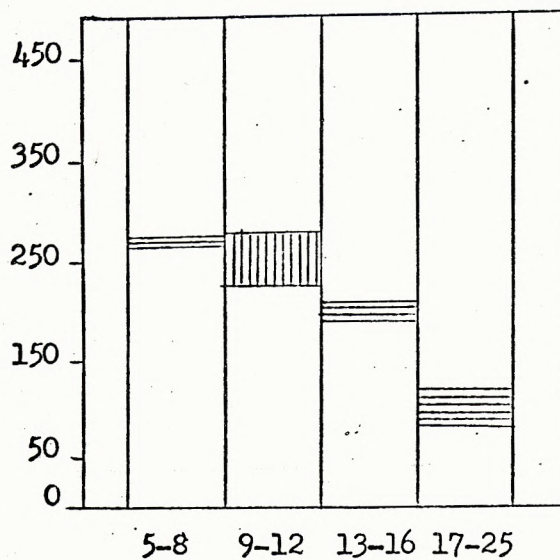


Increase

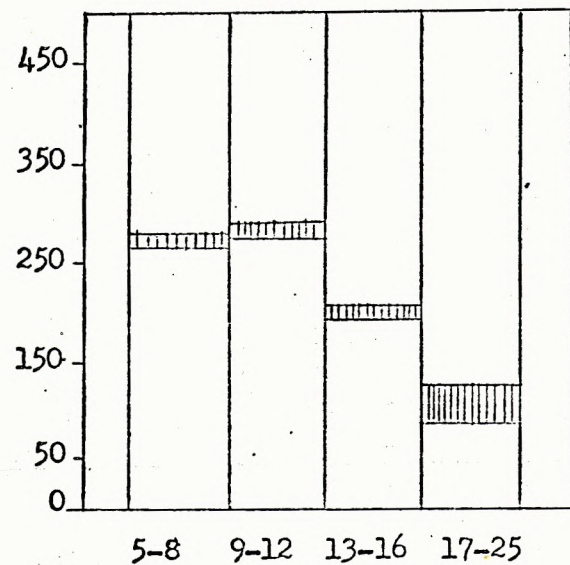


Decrease

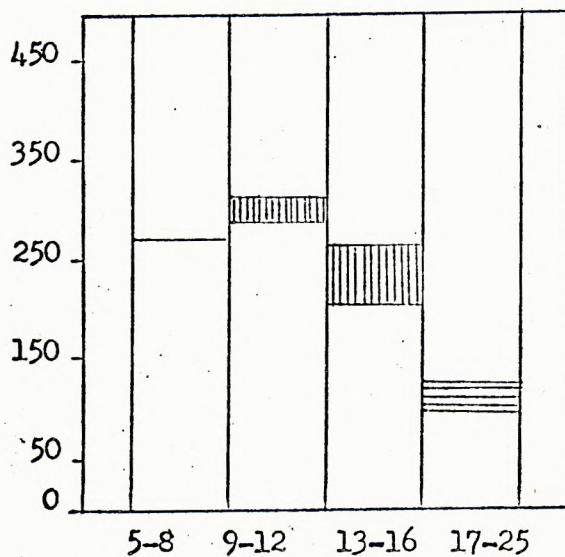
1965-66 - 1966-67



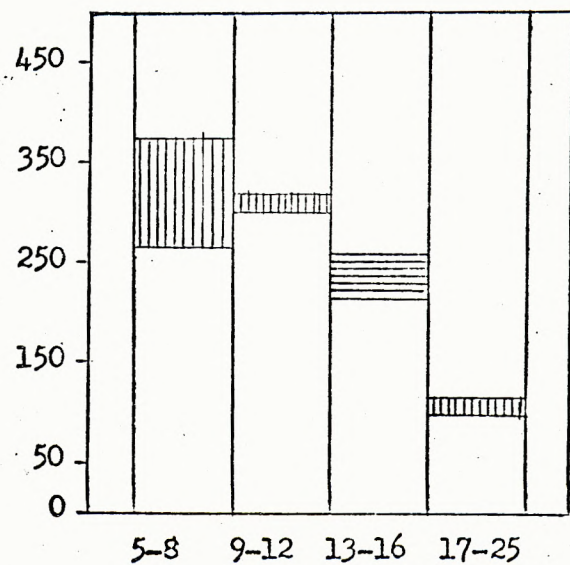
1966-67 - 1967-68



1967-68 - 1968-69



1968-69 - 1969-70



Comparison of Enrolments by Grade Groups
From Four Reserves in the Georgian Bay District Over
A Five Year Period

Compiled August 1970

KEY:

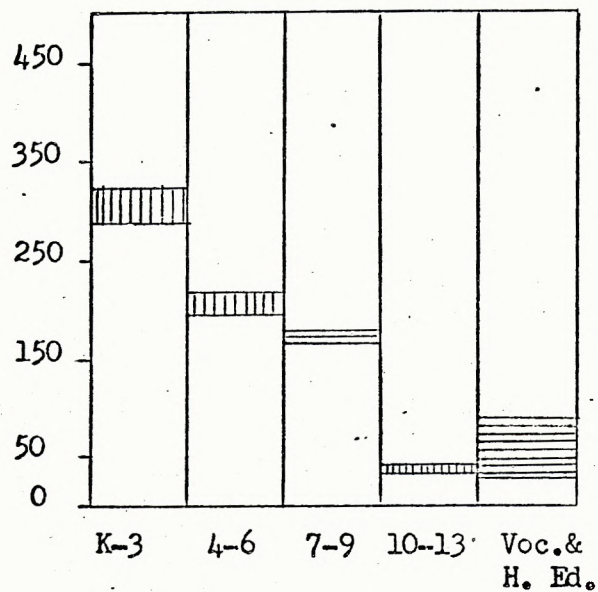


Increase

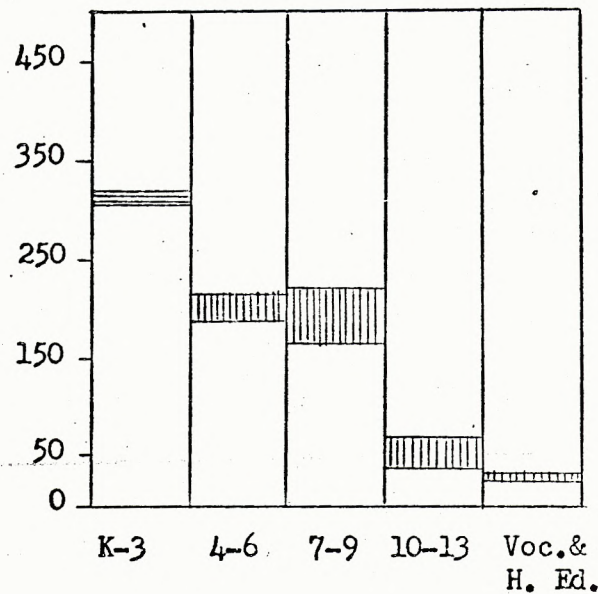


Decrease

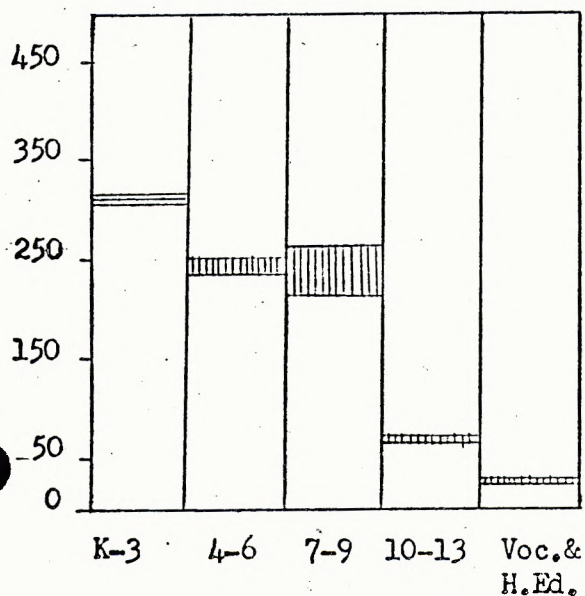
1965-66 - 1966-67



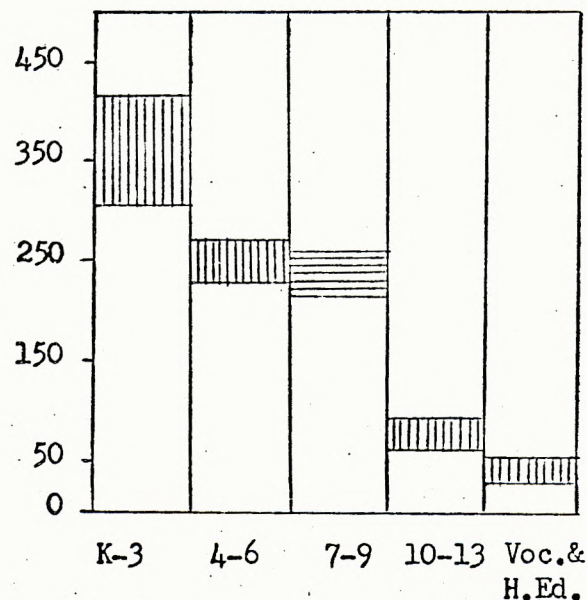
1966-67 - 1967-68



1967-68 - 1968-69



1968-69 - 1969-70



Number of Students by Grade Groups
Who are Two Years or More Age-Grade Retarded
From Four Reserves in the Georgian Bay District

Compiled August 1970

<u>1965-66</u>	<u>No. of Age- Grade Retarded</u>	<u>Total Grade Enrolment</u>	<u>% 2 years or more Age-Grade Retarded</u>
Grades 1 - 3	38	297	12.236%
4 - 6	53	190	27.170%
7 - 9	68	184	36.176%
10 - 13	17	45	37.35 %
<u>1966-67</u>			
Grades 1 - 3	33	322	10.80 %
4 - 6	70	217	32.56 %
7 - 9	79	176	44.156%
10 - 13	20	46	43.22 %
<u>1967-68</u>			
Grades 1 - 3	31	315	9.265%
4 - 6	82	238	34.108%
7 - 9	125	222	56.68 %
10 - 13	54	63	85.45 %
<u>1968-69</u>			
Grades 1 - 3	43	313	13.231%
4 - 6	98	250	39.50 %
7 - 9	117	261	44.216%
10 - 13	43	64	67.12 %
<u>1969-70</u>			
Grades 1 - 3	38	410	9.110%
4 - 6	46	265	17.95 %
7 - 9	108	209	51.141%
10 - 13	58	72	66.58 %

Number of Students by Year and Grade
Who are Two Years or More Age-Grade Retarded
From Four Reserves in the Georgian Bay District

Compiled August 1970

1965-66

Grades 1 - 10
2 - 12
3 - 16
4 - 9
5 - 28
6 - 16
7 - 23

Grades 8 - 18
9 - 27
10 - 8
11 - 7
12 - 2
13 - -

Total: 176

Total School Enrolment - 809

% 2 years or more Age-Grade
Retarded - 21.611%

1966-67

Grades 1 - 4
2 - 9
3 - 20
4 - 23
5 - 20
6 - 27
7 - 29

Grades 8 - 20
9 - 30
10 - 9
11 - 8
12 - 3
13 - -

Total: 202

Total School Enrolment - 801

% 2 years or more Age-Grade
Retarded - 25.175%

1967-68

Grades 1 - 9
2 - 9
3 - 13
4 - 26
5 - 37
6 - 19
7 - 48

Grades 8 - 24
9 - 53
10 - 34
11 - 13
12 - 7
13 - -

Total: 292

Total School Enrolment - 880

% 2 years or more Age-Grade
Retarded - 33.160%

1968-69

Grades 1 - 10
2 - 17
3 - 16
4 - 30
5 - 36
6 - 32
7 - 43

Grades 8 - 40
9 - 34
10 - 27
11 - 9
12 - 7
13 - -

Total: 301

Total School Enrolment - 931

% 2 years or more Age-Grade
Retarded - 32.308%

1969-70

Grades 1 - 13
2 - 7
3 - 18
4 - 9
5 - 20
6 - 17
7 - 38

Grades 8 - 28
9 - 42
10 - 39
11 - 11
12 - 8
13 - -

Total: 250

Total School Enrolment - 1024

% 2 years or more Age-Grade
Retarded - 24.424%

Numbers and Grades of 14, 15 and 16 Year Olds
Two Years or More Age-Grade Retarded
From Four Reserves in the Georgian Bay District Over A Five Year Period

Compiled August 1970

14 Year Olds

<u>1965</u>		<u>1966</u>		<u>1967</u>		<u>1968</u>		<u>1969</u>	
<u>Grades</u>	<u>No.</u>	<u>Grades</u>	<u>No.</u>	<u>Grades</u>	<u>No.</u>	<u>Grades</u>	<u>No.</u>	<u>Grades</u>	<u>No.</u>
5	2	5	2	5	1	5	-	5	-
6	1	6	4	6	2	6	5	6	4
7	11	7	18	7	27	7	32	7	24
8	21	8	14	8	17	8	17	8	17
9	18	9	2	9	1	9	15	9	-
10	-	10	2	10	-	10	-	10	-
	<hr/> 53		<hr/> 42		<hr/> 48		<hr/> 69		<hr/> 45

15 Year Olds

5	-	5	-	5	-	5	-	5	-
6	1	6	1	6	2	6	1	6	-
7	11	7	9	7	17	7	9	7	11
8	15	8	11	8	16	8	31	8	20
9	21	9	15	9	11	9	18	9	26
10	5	10	6	10	-	10	3	10	2
	<hr/> 53		<hr/> 42		<hr/> 46		<hr/> 62		<hr/> 59

16 Year Olds

5	-	5	-	5	-	5	-	5	-
6	-	6	-	6	-	6	1	6	-
7	1	7	2	7	4	7	2	7	3
8	3	8	9	8	8	8	5	8	8
9	20	9	11	9	23	9	25	9	30
10	12	10	9	10	4	10	4	10	6
11	5	11	-	11	1	11	1	11	-
12	1	12	1	12	-	12	-	12	-
Voc.	10	Voc.	5	Voc.	5	Voc.	11	Voc.	16
	<hr/> 52		<hr/> 37		<hr/> 45		<hr/> 49		<hr/> 63

Number of 14, 15 and 16 Year Olds
Two Years or More Age-Grade Retarded
From Four Reserves in the Georgian Bay District

Compiled August 1970

KEY:

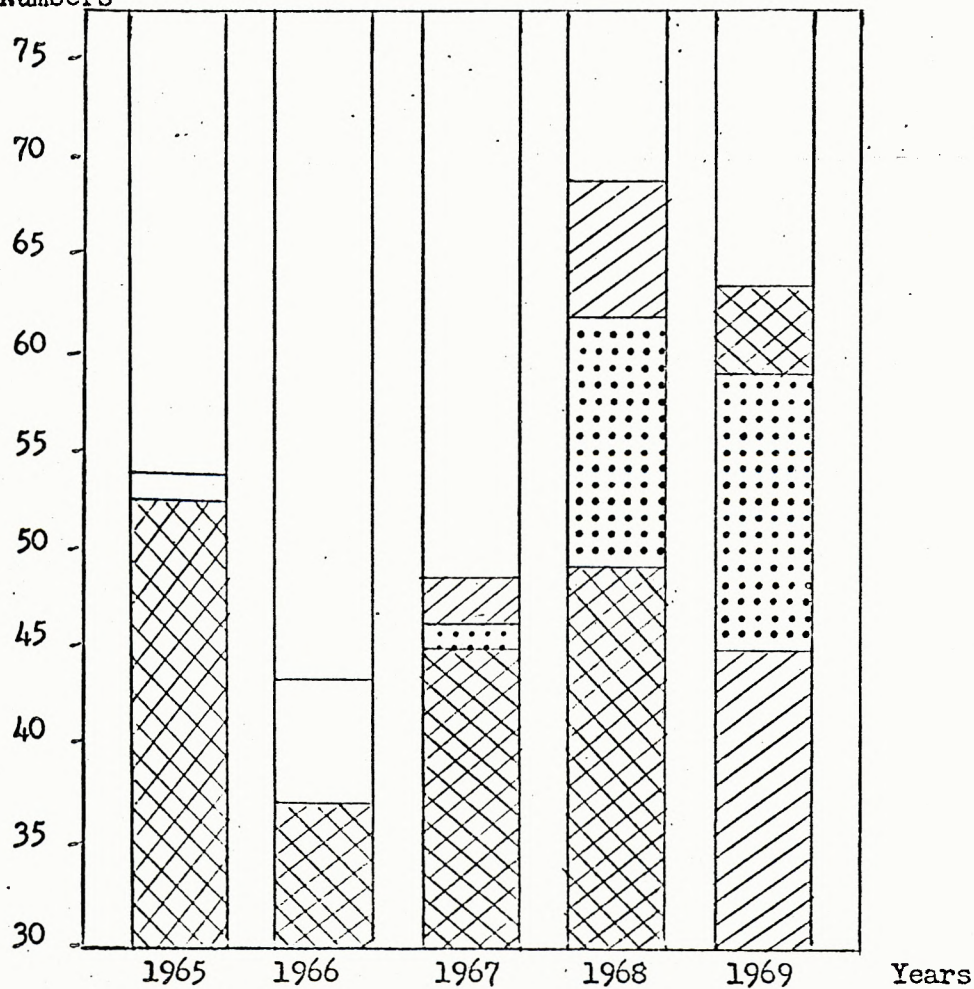
□ 14 and 15 year olds

▨ 14 years

▩ 15 years

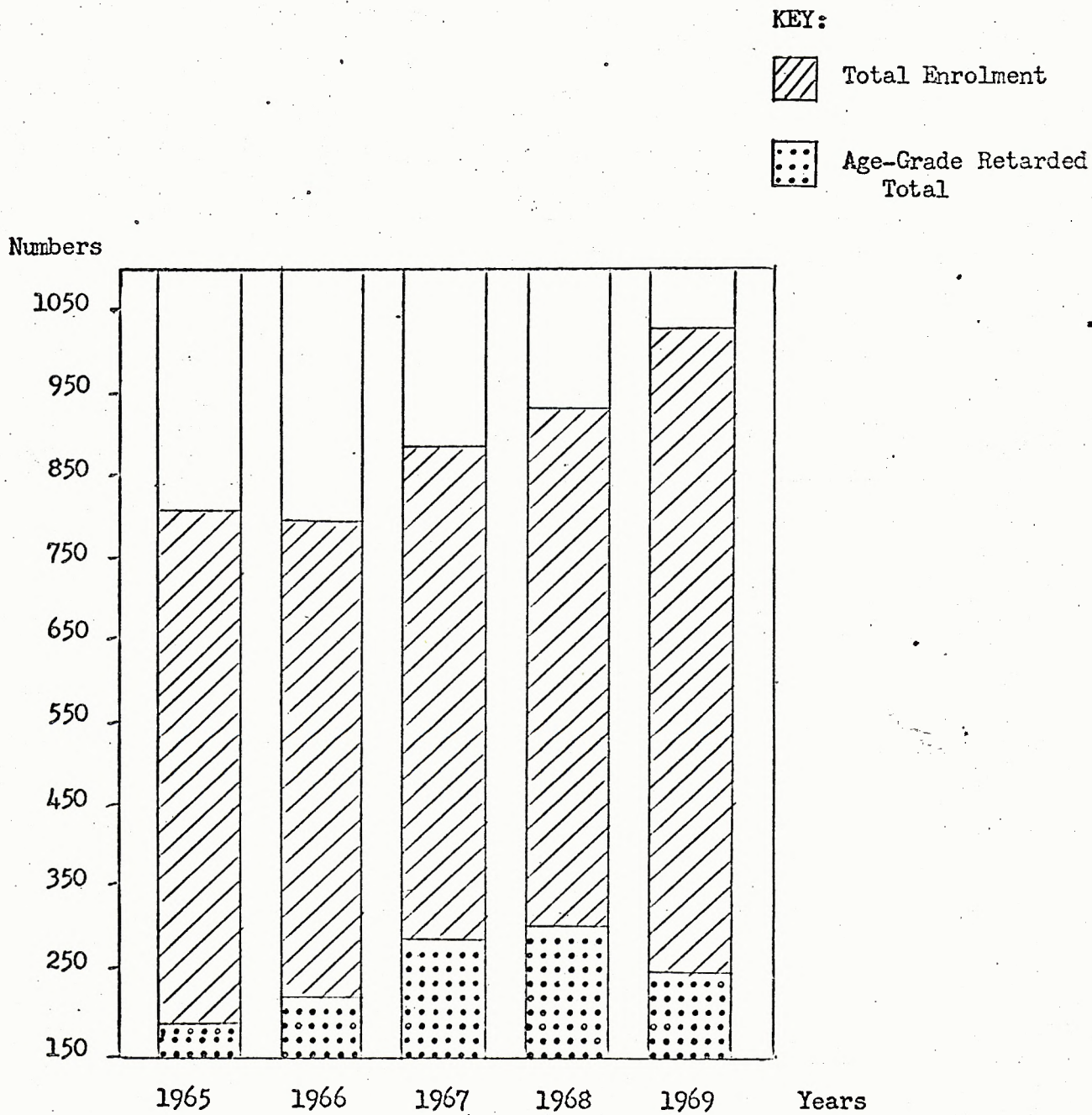
▧ 16 years

Numbers



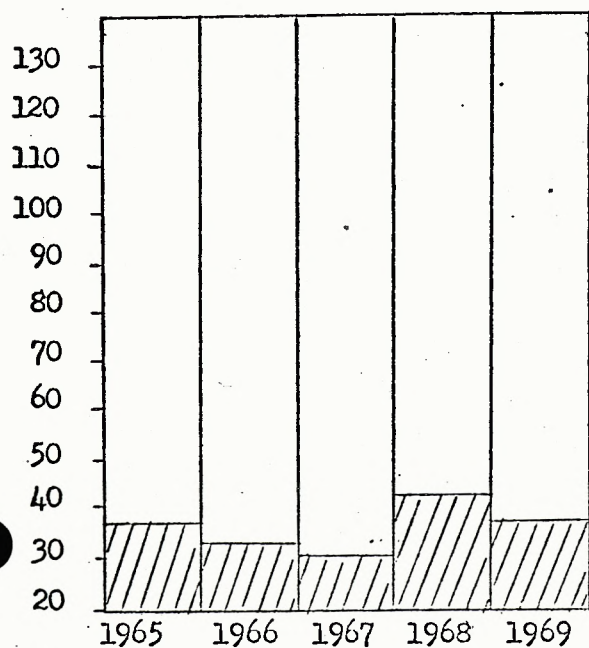
Number of Students by Year and Grade
Who Are Two Years or More Age-Grade Retarded
From Four Reserves in the Georgian Bay District

Compiled August 1970

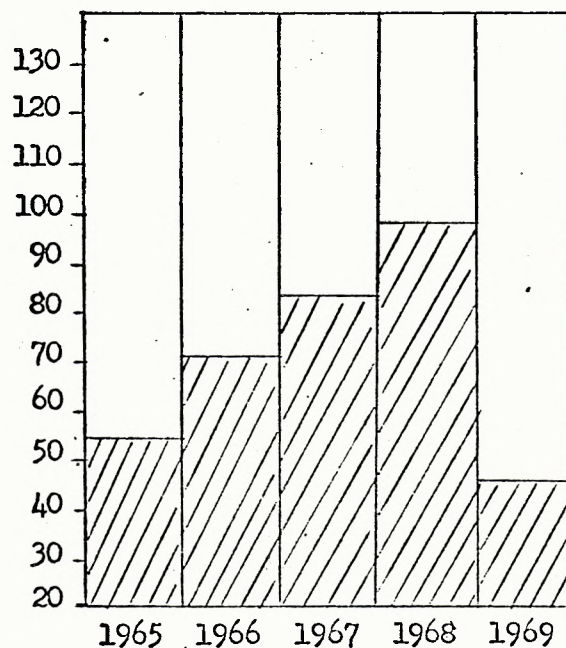


Numbers of Indian Students by Grade Groups
Who are Two Years or More Age-Grade Retarded
From Four Reserves in Georgian Bay District Over A Five Year Period

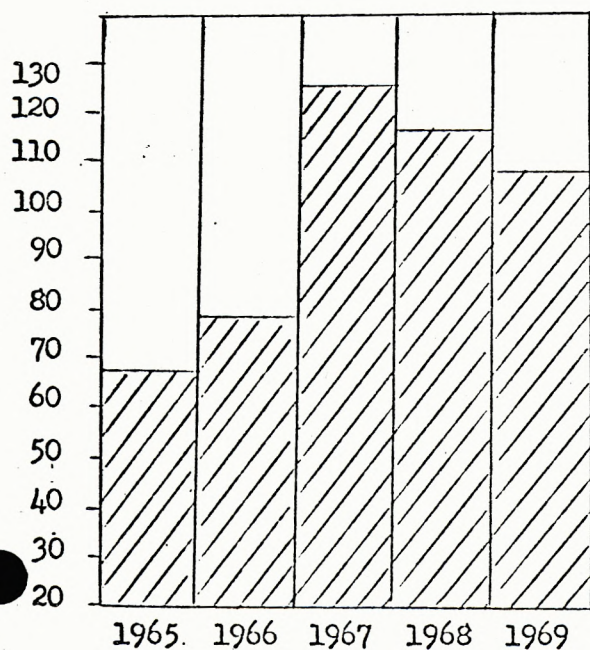
Compiled August 1970



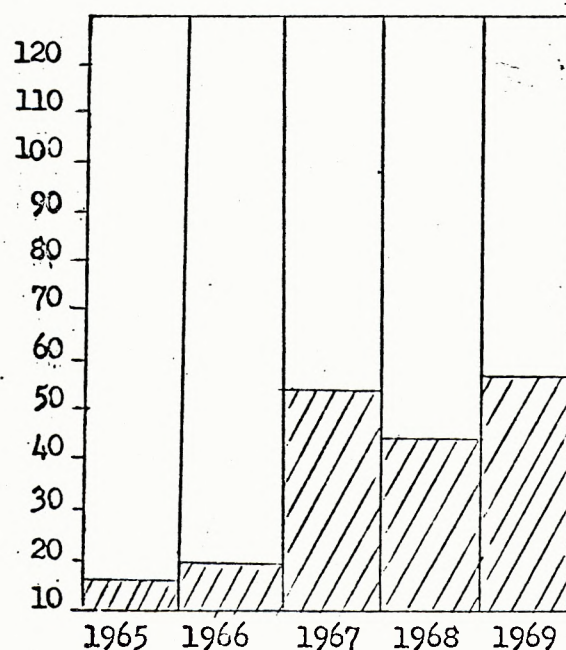
1 - 3



4 - 6



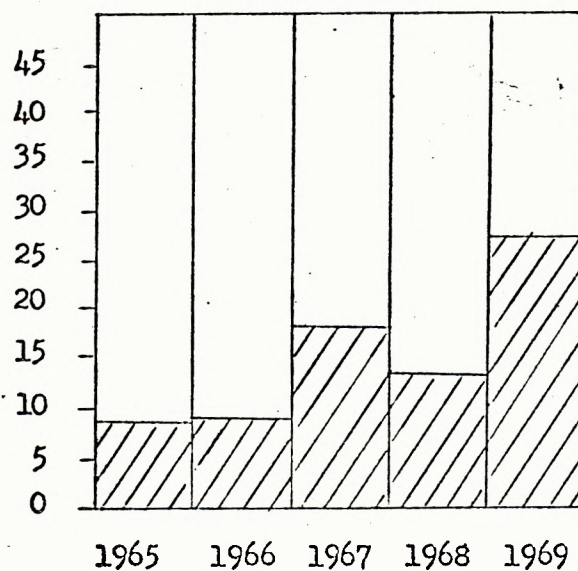
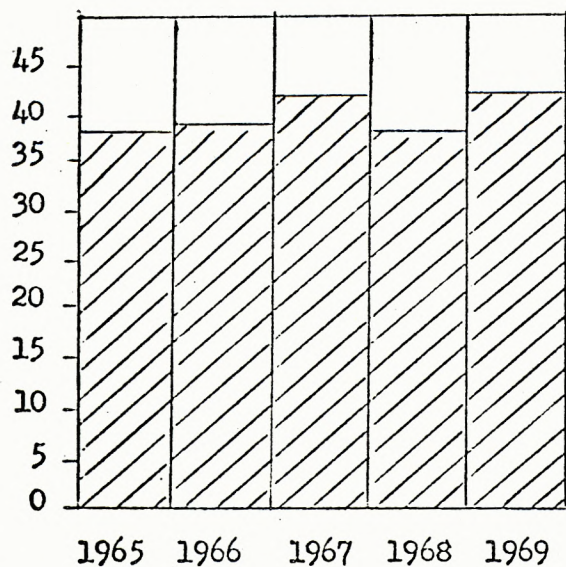
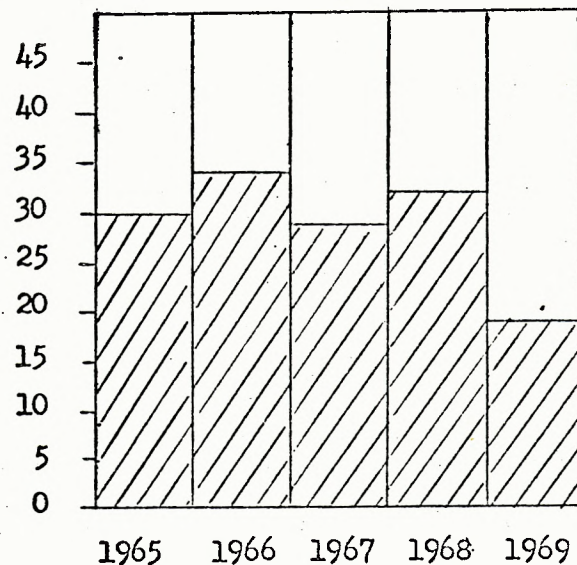
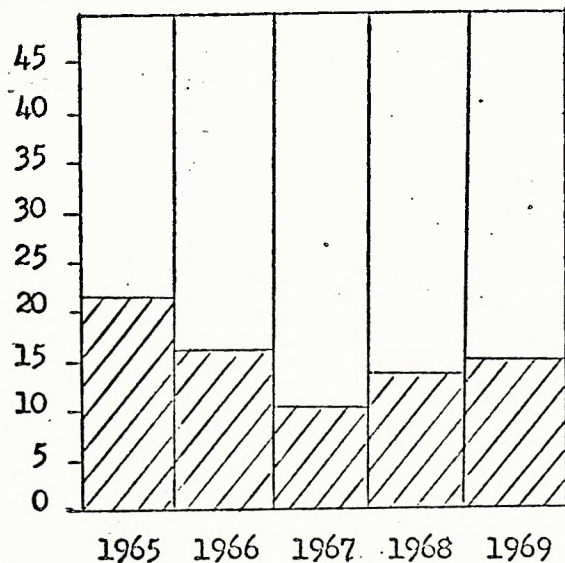
7 - 9



10 - 12

Percentage of Age-Grade Retardation by Grade Groups
 Worked on % of the Total Number Who Are Age-Grade Retarded
 From Four Reserves in the Georgian Bay District

Compiled August 1970



Percentage of Age-Grade Retardation by Grade Groups
 Worked on % of the Total Number Who Are Age-Grade Retarded
 From Four Reserves in the Georgian Bay District

Compiled August 1970

<u>Year</u>	<u>Grades</u>	<u>No. 2 Yrs. or More Age-Grade Retarded</u>	<u>Total 2 Years or More Age- Grade Retarded</u>	<u>% of Total Who Are 2 Yrs. or More Age- Grade Retarded</u>
1965	1-3	38	176	21.6%
	4-6	53		30.0%
	7-9	68		38.7%
	10-12	17		9.7%
1966	1-3	33	202	16.3%
	4-6	70		34.7%
	7-9	79		39.1%
	10-12	20		9.9%
1967	1-3	31	292	10.6%
	4-6	82		28.1%
	7-9	125		42.8%
	10-12	54		18.5%
1968	1-3	43	301	14.3%
	4-6	98		32.6%
	7-9	117		38.8%
	10-12	43		14.3%
1969	1-3	38	250	15.2%
	4-6	46		18.4%
	7-9	108		43.2%
	10-12	58		23.2%

APPENDIX "B"

COMMENTS BY RESEARCH ASSISTANT REGARDING AVAILABILITY OF DATA AND
THE DEGREE OF DIFFICULTY ENCOUNTERED IN EXTRACTING AND COMPILING
THE DATA

1. AVAILABILITY OF DATA

For Federal Indian Day Schools, the data was obtained at headquarters and checked through the district office files. For provincial schools, a list of schools in the four agencies, covered by the district office, was compiled (Appendix C). The school files were then extracted and the September enrolments for each year, of the five year period, located. For each year, the age and grade of the students had to be determined; the grades were given on the enrolment lists and in some instances age was also stated. Where their ages were not stated, they were found by one of two methods. First by locating the student's name on a band list and getting his date of birth or secondly by referring to the student's individual file where his application for educational assistance would give his birth date. For Vocational Training and Higher Education much the same procedure was followed. In certain cases it was necessary to consult the educational assistance forms for the student's age or course he was enrolled in. In general, educational surveys and files pertaining to vocational training were the main sources of data. As further references Messrs. Crutcher and Thompson, Canada Manpower Centre, and Mr. Alex MacDonald, Georgian College were consulted and asked to supply any pertinent information. Similarly, a close liaison was maintained with Mr. R.A. Donovan, counsellor, and the district office staff. Most of the references used are from the district office's Records Manual and are listed in Appendix "C" by title and number.

2. PROBLEMS ENCOUNTERED

Generally speaking, the problems in extracting the enrolment data were not major in nature. The biggest problems encountered were, in the first instance, difficulty in keeping track of the transfer of students, either lateral or promotional, due to provincial school closures, or transfers from Indian day schools to provincial schools and secondly, a lack of information on file pertaining to these closures combined with a lack of standardization for keeping these records. To give a clearer picture of these problems a few examples would be useful. Example #1: Gibson Public School file had only one year on record, 1965-66; and no information giving an explanation of

what had happened to the school. Therefore it was necessary to consult with the counsellor who informed me that Gibson P.S. was a forerunner of William Beatty P.S. and that after 65-66 the students scheduled to attend Gibson in the following years would be transported to William Beatty; in an effort to regionalize the school system. Example #2: Nobel P.S. has no record of enrolments for 1969-70; a search of different files turned up nothing; it is therefore assumed that the records are either lost or have not been sent in by the school. These examples give an insight into the problems which turned up in several instances while working on the pilot study (Notes Appendix "C"). The problems re vocational training and continuing education were practically the same as those encountered in the provincial schools although there was a marked deficiency in the amount of information available on file for students on post school training programs. One problem encountered is that a student whose home is here and who applies for assistance does not necessarily apply to this responsibility centre. For example, a student from this district could go directly to Toronto and apply there for educational assistance. By all intents and purposes, this District office should have a copy of the educational assistance form but in some cases it was a problem to track them down.

Another problem became evident after talking with Mr. MacDonald of Georgian College. It was learned that he could not supply us with any information on Indian student enrolment unless we could supply him with the names and the various years required. No records are kept of Indian student enrolment per se, so it was impossible to determine the number of Indian students who had been enrolled at Georgian College in post school training during the five year period of the study. The only information available was the names of Indians enrolled in a special small motors course given in 1969-70. The same problem arose in identifying Indian trainees at the Canada Manpower Centre. Mr. Thompson was unable to supply us with any data except for a power sewing course given for Indians last year at Christian Island.

The figures arrived at in the pilot study for provincial schools are fairly close to the figures on record in the department's central statistics. The overall number of students enrolled according to departmental statistics is 2,148 for the Georgian Bay District; the pilot study shows a total of 2,230; this gives a difference of 82 pupils or 3%. For vocational training, the figures available in Ottawa cover the years 1965-66 to 1968-69, and show 225 students enrolled during the four year period in the Georgian Bay District. The pilot study figures for the same period show an enrolment of 218 students; a difference of 3% for the same period.

CONCLUSIONS

There appears to be approximately 3% difference in enrolment figures obtained by conventional means and those obtained through the pilot project survey. One further step would appear to be necessary in order to confirm the figures and that is to visit the individual band administrators and get the names of Indians who are presently attending school and those who were attending during the five year span of the study. Even if the information is available, this step would require quite a bit of time and work. Due to the lack of certain information on file, it would be suggested that the researcher should be in constant touch with the counsellors or the D.S.S., because of their knowledge of the district's affairs and their intimate knowledge of the whereabouts of the Indian students.

In my opinion the study was worthwhile. It was time consuming, but it was definitely feasible.

P.J. Stang

LIST OF PROVINCIAL SCHOOL FILES BY AGENCY

Parry Sound

- Bracebridge H.S.
- Britt P.S.
- Bala P.S. (West Muskoka Senior P.S.)
- Central P.S. (MacTier P.S.)
- Gibson P.S. (William Beatty)
- Gravenhurst H.S.
- Isabella P.S.
- Nobel P.S.
- Parry Sound H.S.
- S.S. #2 Freeman P.S.

Simcoe

- Davial H. Church P.S.
- Morning Glory P.S.
- Park Street Collegiate
- Port Perry H.S.
- Regent Park P.S.
- Sutton P.S.
- Sutton D.H.S.

Bruce

- D.H. Wiarton P.S.
- D. Huston P.S.
- Loretta Abbey
- Owen Sound Collegiate
- Saugeen District High
- Walkerton D.H.S.
- West Hill Secondary

Christian Island

- Bayview P.S.
- Midland D.H.S.
- Parkview P.S.
- Penetanguishene D.H.S.
- Sacred Heart P.S.
- St. Theresa's H.S.

FILE REFERENCES

- Primary
- provincial school enrolment files
 - school inspectors reports 23-5
 - high school education 25-14
 - Vocational Training 13-5
 - Vocational Training survey 1965-66: 25-8
1967-68 - 1968-69: 25-1
1969-70: 23-6
 - Post School and Adult Education 25-16, 21-4, 23-6,
25-8
- Secondary
- joint school agreements 25-11
 - statistics general 41-5
 - Educational surveys 25-21
 - school sites 36-4

NOTES ON PROVINCIAL SCHOOLS BY AGENCY

Parry Sound

- Central P.S.

Known as MacTier Central P.S. In 1966 S.S. #2 Freeman school closed and all the students were transferred to MacTier.

Nobel P.S.

No record to be found for the year 1969-70. Assumed lost or not received.

Gibson P.S.

Only record is for 1965-66 because this school was a forerunner of William Beatty P.S. where the students will attend in the following years.

Bala P.S.

Records from 1965-66 to 1967-68; the following years come under West Muskoka Senior P.S.

Parry Sound H.S.

No record found for year 1967-68.

Bracebridge H.S.

No 1969-70 record presumably not turned in.

Simcoe

- Scugog T.S.A.

1965-66: Arthur Goose age 14 graduate
Grade 8 then on to Port Perry H.S.
No records on file after 1965-66.

Morning Glory P.S.

1965-66: 2 students enrolled.

Pamela Trumble: Age 14 graduate Grade 8 on to
Grade 9 at Sutton D.H.S.
then on to O.D.C.V.I.

Darlene Big Canoe: Age 13 graduate Grade 7
to Grade 8 at Sutton P.S.

School closed in June 1966.

Port Perry H.S.

1965-66: Indian enrolment nil.

1966-67 to 1968-69: 1 student Arthur Goose
age 15 graduate Grade 9
on to Grade 10, failed
and dropped out at 17.

1969-70: Edith Johnson age 16 Grade 9
enrolled September 1969, dropped
out March 1970.

Park Street Collegiate

1967-68: Only year had Indian enrolment

Marlene Shilling	- age 16)	second year of
)	a two year occupa-
Edith Williams	- age 17)	tional course

Went on to O.D.C.V.I.

Bruce

- Loretta Abbey P.S.

Two students enrolled, Daphne Johnston age 16 Grade 9 and Corrine Johnston age 18 Grade 11, both transferred to West Hill Collegiate. Enrolments in years preceeding and following 1967-68 were nil; no records on file.

Walkerton D.H.S.

1967-68 and 1969-70 are the only years in which there was Indian enrolments.

Saugeen D.H.S.

1965-66: 2 students Audrey Kewaquam age 17 and Sharon Stevens 17 both in Grade 9 went on to Grade 10 at Owen Sound Collegiate.

1969-70: 3 students Dwight Smith age 19 Grade 13, Gayle Mason age 18 Grade 10, Jeanette Ritchie age 17 Grade 9. Other years, students enrolled at Owen Sound.

Christian Island

Midland H.S.

No Indian enrolment prior to 1967-68.

Bayview P.S.

No records on file 1965-66 to 1968-69.

1969-70: 4 students, 2 of age 11 and 2 of
age 12 all in special education
classes.

St. Theresa's H.S.

1965-66: 2 students, 1 age 14 Grade 9,
1 age 15 Grade 10

1969-70: 1 age 16 Grade 9

Other years no records, possibility no
Indian enrolments those years.