



# CANADIAN FORCES BASE SUFFIELD NATIONAL WILDLIFE AREA



Canadian Forces Base Suffield National Wildlife Area

## What makes CFB Suffield NWA so special?

Canadian Forces Base (CFB) Suffield National Wildlife Area (NWA) was established in 2003 to protect and conserve native prairie grasslands and wildlife, including many species at risk. Located within CFB Suffield in southeastern Alberta, its 458 square kilometres encompass a diversity of habitats that support a wide range of wildlife species, many of which have declined or disappeared elsewhere across the prairies in Canada.

CFB Suffield is:

- home to more than 1100 species, 20 of which are listed as species at risk in Canada;
- vital habitat for emblematic prairie species such as the **Burrowing Owl**, **Ferruginous Hawk** and **Sprague's Pipit**;
- a refuge for rare habitat specialists such as **Small-flowered Sand-verbena** and **Ord's Kangaroo Rat**;

- grazed by large mammals such as native **Pronghorn**, **Mule Deer** and **introduced Elk**.

CFB Suffield NWA provides a rare opportunity to protect populations of unique and endangered prairie wildlife at a scale large enough to promote their recovery and ongoing persistence.

## What are Environment and Climate Change Canada Protected Areas?

Environment and Climate Change Canada establishes marine and terrestrial NWAs for the purposes of conservation, research and interpretation. NWAs are established to protect migratory birds, species at risk, and other wildlife and their habitats. NWAs are established under the authority of the *Canada Wildlife Act* and are, first and foremost, places for wildlife. Migratory Bird Sanctuaries (MBSs) are

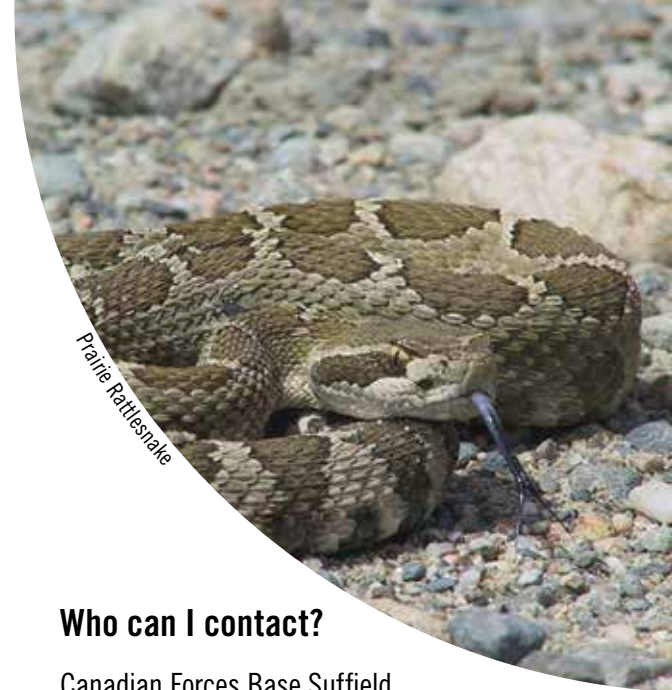
established under the authority of the *Migratory Birds Convention Act 1994*, and provide a refuge for migratory birds in marine and terrestrial environments. The current Protected Areas Network consists of 54 NWAs and 92 MBSs comprising more than 12 million hectares across Canada.

## What can I do at CFB Suffield NWA?

CFB Suffield NWA is managed by the Department of National Defence as part of CFB Suffield. Public access is strictly prohibited, although some research and habitat management activities may be permitted. No hunting is permitted for public safety reasons. For more information on access and permitting for CFB Suffield NWA, contact the CFB Suffield NWA Coordinator or the Environment and Climate Change Canada regional office. For a complete list of NWAs, including those you can visit, please see the Environment and Climate Change Canada website.



Pronghorn



Prairie Rattlesnake

## Who can I contact?

Canadian Forces Base Suffield  
Range Sustainability Section  
National Wildlife Area Coordinator  
P.O. Box 6000, Station Main  
Medicine Hat, Alberta T1A 8K8  
1-800-668-6767  
[ec.enviroinfo.ec@canada.ca](mailto:ec.enviroinfo.ec@canada.ca)  
[www.ec.gc.ca/ap-pa](http://www.ec.gc.ca/ap-pa)

## Where is CFB Suffield NWA?

