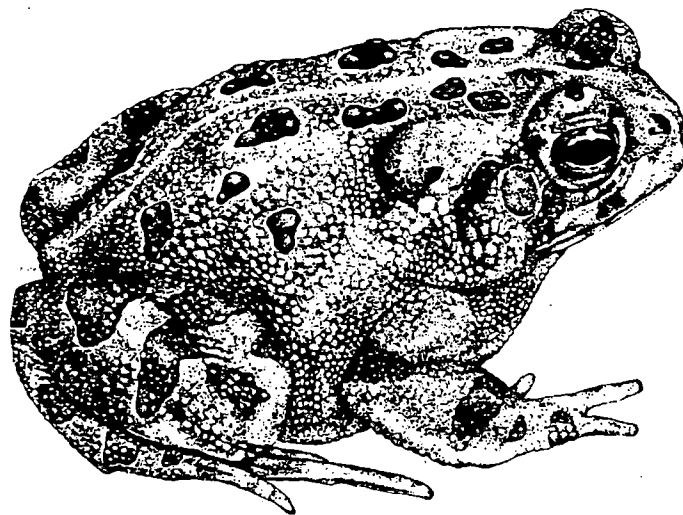


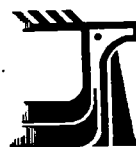
CANADIAN SPECIES AT RISK

MAY 2001



Aussi disponible en français

COSEWIC
COMMITTEE ON THE STATUS
ENDANGERED WILDLIFE
IN CANADA



COSEPAC
COMITÉ SUR LA SITUATION
DES ESPÈCES EN PÉRIL
AU CANADA

QH
77
C3
C6613
2001
MAY
C.1.

For additional copies contact:

COSEWIC SECRETARIAT
Chief, Colleen Hyslop
c/o Canadian Wildlife Service
Environment Canada
Ottawa, ON
K1A 0H3

Tel: 819-997-4991/994-2407/953-3215

Fax: 819-994-3684

E-mail: cosewic-cosepac@ec.gc.ca

Web site: <http://www.cosewic.gc.ca>

Courier address: 4th Floor, Place Vincent Massey, 351 St. Joseph Blvd. Hull, QC.

Cover Illustration

Fowler's Toad

- A. Jenks, Owen Sound, Ontario

This list can be cited as follows:

COSEWIC, 2001. Canadian Species at Risk, May 2001. Committee on the Status of Endangered Wildlife in Canada. 31 pp.

TABLE OF CONTENTS

ABOUT COSEWIC	1
COSEWIC Mandate	1
COSEWIC Membership	1
Definitions	1
SUMMARY TABLES	2
COSEWIC Species at risk, not at risk and data deficient	2
Results of May 2001 COSEWIC meeting	3
COSEWIC LISTS	4
Explanation of symbols	4
Geographical occurrence abbreviations	4
List 1. Species designated in the five "risk" categories.	5
List 2. Species examined and designated in the NOT AT RISK category.	15
List 3. Species examined and designated in the DATA DEFICIENT category.	19
RECORD OF STATUS RE-EXAMINATIONS	21
LIST OF NAME CHANGES	31

100
1000000

ABOUT COSEWIC

COSEWIC Mandate

The Committee on the Status of Endangered Wildlife in Canada (COSEWIC) determines the national status of wild species, subspecies, varieties, and nationally significant populations that are considered to be at risk in Canada. Designations are made on all native species for the following taxonomic groups: mammals, birds, reptiles, amphibians, fish, lepidopterans, molluscs, vascular plants, mosses, and lichens.

COSEWIC Membership

COSEWIC comprises representatives from each provincial and territorial government wildlife agency, four federal agencies (Canadian Wildlife Service, Parks Canada Agency, Department of Fisheries and Oceans, Canadian Museum of Nature), three nonjurisdictional members, and co-chairs of species specialist groups. The committee meets at least once per year to consider status reports on candidate species.

Definitions

Species	Any indigenous species, subspecies, variety, or geographically defined population of wild fauna and flora.
Extinct (X)	A species that no longer exists.
Extirpated (XT)	A species no longer existing in the wild in Canada, but occurring elsewhere.
Endangered (E)	A species facing imminent extirpation or extinction.
Threatened (T)	A species likely to become endangered if limiting factors are not reversed.
Special Concern (SC)*	A species of special concern because of characteristics that make it particularly sensitive to human activities or natural events.
Not At Risk (NAR)**	A species that has been evaluated and found to be not at risk.
Data Deficient (DD)***	A species for which there is insufficient scientific information to support status designation.

* Formerly described as "Vulnerable" from 1990 to 1999, or "Rare" prior to 1990.

** Formerly described as "Not In Any Category", or "No Designation Required."

*** Formerly described as "Indeterminate" from 1994 to 1999 or "ISIBD" (insufficient scientific information on which to base a designation) prior to 1994.

SUMMARY TABLES

COSEWIC Species at risk, not at risk and data deficient

Summary of List 1. COSEWIC list of species at risk, including results from May 2001 meeting.

CATEGORY / STATUS	EXTINCT	EXTIRPATED	ENDANGERED	THREATENED	SPECIAL CONCERN	TOTALS
Mammals	2	4	15	13	25	59
Birds	3	2	20	6	23	54
Reptiles		2	5	6	8	21
Amphibians			4	3	9	16
Fishes	6	2	10	18	40	76
Lepidopterans		3	3	2	2	10
Molluscs	1	1	7	1	1	11
Vascular Plants		2	49	33	44	128
Mosses			1			1
Lichens			1		3	4
TOTALS	12	16	115	82	155	380

Summary of List 2. COSEWIC list of species not at risk, including results from May 2001 meeting.

CATEGORY / STATUS	NOT AT RISK
Mammals	47
Birds	35
Reptiles	1
Amphibians	10
Fishes	31
Lepidopterans	
Molluscs	
Vascular Plants	16
Mosses	
Lichens	
TOTALS	140

Summary of List 3. COSEWIC list of data deficient species including results from May 2001 meeting.

CATEGORY / STATUS	DATA DEFICIENT
Mammals	8
Birds	3
Reptiles	
Amphibians	
Fishes	7
Lepidopterans	
Molluscs	1
Vascular Plants	4
Mosses	
Lichens	
TOTALS	23

Results of May 2001 COSEWIC meeting

May 2001 species by status and taxon

CATEGORY / STATUS	EXTINCT	EXTIRPATED	ENDANGERED	THREATENED	SPECIAL CONCERN	NOT AT RISK	DATA DEFICIENT	TOTALS
Mammals				1	1	1		3
Birds			2		1			3
Reptiles		1	2					3
Amphibians			1			1		2
Fishes			1	3	2	1		7
Lepidopterans								0
Molluscs			2					2
Vascular Plants			10	5	2			17
Mosses								0
Lichens								0
TOTALS	0	1	18	9	6	3	0	37

May 2001 species by status and type of change in status

CATEGORY / STATUS CHANGE*	EXTINCT	EXTIRPATED	ENDANGERED	THREATENED	SPECIAL CONCERN	NOT AT RISK	DATA DEFICIENT	TOTALS
New		1	10	5	1	1		18
Uplisted (↑)				2				2
Downlisted (↓)					2			2
No Change (↔)			8	2	2	1		13
Changed (⊙)					1			1
De-listed (✓)						1		1
TOTALS	0	1	18	9	6	3	0	37

* Explanation of terms on following page.

COSEWIC LISTS

The lists that follow are organized by status category and then by taxonomic group. Explanation of symbols and abbreviations is provided below. For each species, the information provided includes the common name, scientific name, population name, and range of occurrence (by province/ territory/ ocean). The most recent date of examination by COSEWIC is shown, and symbols provide information the outcome of status re-examinations (e.g., uplisting, downlisting) and basis of re-examination for species evaluated against the new quantitative criteria. For birds, geographical occurrence includes the Canadian breeding and wintering distribution.

The first COSEWIC "Endangered Species List" was issued in 1978. In 1990, it was decided that all species considered by COSEWIC should be listed even if the species were "not at risk" or "data deficient." Therefore, this document is divided into three separate lists. List 1 includes Species designated as Extinct, Extirpated, Endangered, Threatened or Special Concern. List 2 includes species examined and designated in the Not at Risk category. List 3 includes species examined and designated in the Data Deficient category because of insufficient scientific information, with geographical occurrence and most recent date of examination.

Explanation of symbols

Re-assessments and new species

- ↑ Species placed in a higher risk category (uplisted) after re-examination on the date shown.
- ↓ Species placed in a lower risk category (downlisted) after re-examination on the date shown.
- ↔ Species stays in the same risk category (no change) after re-examination on the date shown.
- ✓ Species moved to the Not at Risk category from a risk category (de-listed) on the date shown.
- ⊙ Species moved to the Data Deficient Category from a risk category, or to a risk category from the Data Deficient Category (changed), on the date shown.
- (no arrow) New species examined on the date shown.

Evaluation with COSEWIC's new quantitative criteria

COSEWIC has recently begun using quantitative criteria to assess species' risk of extinction. These criteria were adapted from the criteria used by the World Conservation Union (IUCN) and have been used by COSEWIC since October 1999.

- △ or △+ Species has been assessed with new quantitative criteria based on a **new** status report or an update status report. A plus sign (+) indicates the report has an addendum.
- ⊠ or ⊠+ Species re-assessed with new quantitative criteria using an **existing** status report. A plus sign (+) indicates the report has an addendum.

Geographical occurrence abbreviations

AB	Alberta	NS	Nova Scotia	QC	Québec
BC	British Columbia	NT	Northwest Territories	SK	Saskatchewan
MB	Manitoba	NU	Nunavut	YT	Yukon Territory
NB	New Brunswick	ON	Ontario		
NF	Newfoundland	PE	Prince Edward Island		

List 1. Species designated in the five "risk" categories, with geographical occurrence (by province / territory / ocean) and year of designation. For extinct and extirpated species, the approximate date of disappearance is indicated and geographical occurrence is based on historical distribution records.

EXTINCT CATEGORY (12)

				Exinction Date	Examination Date
Mammals (2)					
△ → Caribou Dawson's subspecies, Woodland	<i>Rangifer tarandus dawsoni</i>	BC	1920s	May 2000	
△ → Mink, Sea	<i>Mustela macrodon</i>	Atlantic coastal waters	1894	May 2000	
Birds (3)					
△ → Auk, Great	<i>Pinguinus impennis</i>	QC NB NS NF	1844	May 2000	
△ → Duck, Labrador	<i>Camptorhynchus labradorius</i>	QC NB NS NF	1875	May 2000	
△ → Pigeon, Passenger	<i>Ectopistes migratorius</i>	SK MB ON QC NB NS PE	1914	May 2000	
Reptiles (0)					
Amphibians (0)					
Fishes (6)					
△ → Cisco, Deepwater	<i>Coregonus johannae</i>	ON	1952	May 2000	
△ → Cisco, Longjaw	<i>Coregonus alpenae</i>	ON	1975	May 2000	
△ → Dace, Banff Longnose	<i>Rhinichthys cataractae smithi</i>	AB	1986	May 2000	
△ → Stickleback, Benthic Hadley Lake	<i>Gasterosteus</i> sp.	BC	1999	May 2000	
△ → Stickleback, Limnetic Hadley Lake	<i>Gasterosteus</i> sp.	BC	1999	May 2000	
△ → Walleye, Blue	<i>Stizostedion vitreum glaucum</i>	ON	1965	May 2000	
Lepidopterans (0)					
Molluscs (1)					
△ → Limpet, Eelgrass	<i>Lottia alveus alveus</i>	QC NS NF	1929	May 2000	
Plants (0)					
Mosses (0)					
Lichens (0)					

EXTIRPATED CATEGORY (16)

				Extirpation Date	Examination Date
Mammals (4)					
△ → Bear, Grizzly	<i>Ursus arctos</i>	Prairie population	AB SK MB	1880s	May 2000
△ → Ferret, Black-footed	<i>Mustela nigripes</i>		AB SK MB	1974	May 2000
△ → Walrus, Atlantic	<i>Odobenus rosmarus rosmarus</i>	Northwest Atlantic population	Atlantic Ocean	mid 19th century	May 2000
△ → Whale, Grey	<i>Eschrichtius robustus</i>	Atlantic population	Atlantic Ocean	before end of 1800s	May 2000
Birds (2)					
△ → Grouse, Sage	<i>Centrocercus urophasianus phaeos</i>	British Columbia population	BC	not observed since 1960s	May 2000
△ → Prairie-Chicken, Greater	<i>Tympanuchus cupido</i>		AB SK MB ON	last reported in 1987 in Saskatchewan	May 2000
Reptiles (2)					
△ → Lizard, Pygmy Short-horned	<i>Phrynosoma douglassii douglassii</i>	British Columbia population	BC	last reported in 1898, near Osoyoos, BC	May 2000
△ Rattlesnake, Timber	<i>Crotalus horridus</i>		ON	1941	May 2001
Amphibians (0)					
Fishes (2)					
△ → Chub, Gravel	<i>Erimystax x-punctatus</i>		ON	last reported in 1958, Thames River drainage	May 2000
△ → Paddlefish	<i>Polyodon spathula</i>		ON	1917	May 2000
Lepidopterans (3)					
△ → Blue, Karner	<i>Lycaeides melissa samuelis</i>		ON	1991	May 2000
△ → Elfin, Frosted	<i>Callophrys [Incisalia] irus</i>		ON	1988	May 2000
△ → Marble, Island	<i>Euchloe ausonides</i>		BC	before 1910	May 2000
Molluscs (1)					
△ → Wedgemussel, Dwarf	<i>Alasmodonta heterodon</i>		NB	1968	May 2000
Plants (2)					
△ → Blue-eyed Mary	<i>Collinsia verna</i>		ON	not observed since 1954	May 2000
△ → Tick-trefoil, Illinois	<i>Desmodium illinoense</i>		ON	not observed since 1888	May 2000
Mosses (0)					
Lichens (0)					

ENDANGERED CATEGORY (115)

Mammals (15)

△	Badger <i>jacksoni</i> subspecies, American	<i>Taxidea taxus jacksoni</i>	ON	May 2000
△	Badger <i>jeffersonii</i> subspecies, American	<i>Taxidea taxus jeffersonii</i>	BC	May 2000
	Caribou, Peary	<i>Rangifer tarandus pearyi</i>	NT	Apr 1991
	Caribou, Peary	<i>Rangifer tarandus pearyi</i>	NT NU	Apr 1991
△ ↑	Caribou, Woodland	<i>Rangifer tarandus caribou</i>	QC	May 2000
△ →	Fox, Swift	<i>Vulpes velox</i>	AB SK	May 2000
△ →	Marmot, Vancouver Island	<i>Marmota vancouverensis</i>	BC	May 2000
△ →	Marten, American	<i>Martes americana atrata</i>	NF	May 2000
	Whale, Beluga	<i>Delphinapterus leucas</i>	NU NF Arctic Ocean	Apr 1990
	Whale, Beluga	<i>Delphinapterus leucas</i>	NU QC Arctic Ocean	Apr 1988
	Whale, Beluga	<i>Delphinapterus leucas</i>	Atlantic Ocean	
→	Whale, Beluga	<i>Delphinapterus leucas</i>	QC	Apr 1997
	Whale, Bowhead	<i>Balaena mysticetus</i>	NU Arctic Ocean	Apr 1980
	Whale, Bowhead	<i>Balaena mysticetus</i>	YT NT NU Arctic Ocean	Apr 1986
→	Whale, Right	<i>Eubalaena glacialis</i>	Atlantic Ocean Pacific Ocean	Apr 1990
	Wolverine	<i>Gulo gulo</i>	QC NF	Apr 1989

Birds (20)

	Bobwhite, Northern	<i>Colinus virginianus</i>	ON	Apr 1994
△ ↑	Chat, Western Yellow-breasted	<i>Icteria virens auricollis</i>	BC	Nov 2000
△ →	Crane, Whooping	<i>Grus americana</i>	NT AB	Nov 2000
△ →	Curlew, Eskimo	<i>Numenius borealis</i>	YT NT NU BC AB SK	May 2000
			MB ON QC NB NS PE	
			NF	
△ →	Flycatcher, Acadian	<i>Empidonax virescens</i>	ON	Nov 2000
△ →	Grouse, Sage	<i>Centrocercus urophasianus urophasianus</i>	AB SK	May 2000
△ →	Owl, Barn	<i>Tyto alba</i>	ON QC	May 2000
△ →	Owl, Burrowing	<i>Speotyto cunicularia</i>	BC AB SK MB	May 2000
△ →	Owl, Northern Spotted	<i>Strix occidentalis caurina</i>	BC	May 2000
△	Plover <i>circumcinctus</i> subspecies, Piping	<i>Charadrius melodus circumcinctus</i>	AB SK MB ON	May 2001
△	Plover <i>melodus</i> subspecies, Piping	<i>Charadrius melodus melodus</i>	QC NB NS PE NF	May 2001
△ →	Plover, Mountain	<i>Charadrius montanus</i>	AB SK	Nov 2000
△ →	Rail, King	<i>Rallus elegans</i>	ON	Nov 2000
△ →	Shrike, Eastern Loggerhead	<i>Lanius ludovicianus migrans</i>	MB ON QC	Nov 2000
△ →	Sparrow, Henslow's	<i>Ammodramus henslowii</i>	ON	Nov 2000
△ →	Tern, Roseate	<i>Sterna dougallii</i>	QC NB NS	Oct 1999
△ →	Thrasher, Sage	<i>Oreoscoptes montanus</i>	BC AB SK	Nov 2000
△ →	Warbler, Kirtland's	<i>Dendroica kirtlandii</i>	ON	May 2000
△ →	Warbler, Prothonotary	<i>Protonotaria citrea</i>	ON	May 2000
△ ↑	Woodpecker, White-headed	<i>Picoides albolarvatus</i>	BC	Nov 2000

Reptiles (5)

	Racer, Blue	<i>Coluber constrictor foxii</i>	ON	Apr 1991
	Snake, Lake Erie Water	<i>Nerodia sipedon insularum</i>	ON	Apr 1991
△	Snake, Night	<i>Hypsiglena torquata</i>	BC	May 2001
△ →	Snake, Sharp-tailed	<i>Contia tenuis</i>	BC	Oct 1999
△ →	Turtle, Leatherback	<i>Dermochelys coriacea</i>	Pacific Ocean Atlantic Ocean	May 2001

Amphibians (4)

△ →	Frog, Northern Cricket	<i>Acris crepitans</i>	ON	May 2001
△ →	Frog, Northern Leopard	<i>Rana pipiens</i>	BC	May 2000
△ →	Frog, Oregon Spotted	<i>Rana pretiosa</i>	BC	May 2000

ENDANGERED CATEGORY (continued)

Amphibians (cont.)

△ Frog, Rocky Mountain Tailed	<i>Ascaphus montanus</i>	BC	May 2000
-------------------------------	--------------------------	----	----------

Fishes (10)

△ → Dace, Nooksack	<i>Rhinichthys</i> sp.	BC	May 2000
△ ↑ Lamprey, Morrison Creek	<i>Lampetra richardsoni</i>	BC	May 2000
△ Salmon, Atlantic	<i>Salmo salar</i>	Inner Bay of Fundy populations NB NS (rarely NF) Atlantic Ocean	May 2001
△ ↑ Stickleback, Benthic Paxton Lake	<i>Gasterosteus</i> sp.	BC	May 2000
△ ↑ Stickleback, Benthic Vananda Creek	<i>Gasterosteus</i> sp.	BC	May 2000
△ ↑ Stickleback, Limnetic Paxton Lake	<i>Gasterosteus</i> sp.	BC	May 2000
△ ↑ Stickleback, Limnetic Vananda Creek	<i>Gasterosteus</i> sp.	BC	May 2000
Sucker, Salish	<i>Catostomus</i> sp.	BC	Apr 1986
△ → Trout, Aurora	<i>Salvelinus fontinalis timagamiensis</i>	ON	May 2000
△ → Whitefish, Atlantic	<i>Coregonus huntsmani</i>	NS	Nov 2000

Lepidopterans (3)

△ Blue, Island	<i>Plebejus saepiolus insularis</i>	BC	Nov 2000
△ Checkerspot, Taylor's	<i>Euphydryas editha taylori</i>	BC	Nov 2000
△ → Ringlet, Maritime	<i>Coenonympha tullia nipisiquit</i>	QC NB	May 2000

Molluscs (7)

△ → Bean, Rayed	<i>Villosa fabalis</i>	ON	May 2000
△ → Lamprussel, Wavy-rayed	<i>Lampsilis fasciola</i>	ON	Oct 1999
△ Mussel, Mudpuppy	<i>Simpsonais ambigua</i>	ON	May 2001
△ → Physa, Hotwater	<i>Physella wrighti</i>	BC	May 2000
△ → Riffleshell, Northern	<i>Epioblasma torulosa rangiana</i>	ON	May 2000
△ ↑ Snail, Banff Springs	<i>Physella johnsoni</i>	AB	May 2000
△ Snuffbox	<i>Epioblasma triquetra</i>	ON	May 2000

Plants (49)

△ → Agalinis, Gattinger's	<i>Agalinis gattingeri</i>	ON	May 2001
△ → Agalinis, Skinner's	<i>Agalinis skinneriana</i>	ON	May 2000
△ → Ammannia, Scarlet	<i>Ammannia robusta</i>	BC ON	May 2001
△ → Avena, Eastern Mountain	<i>Geum peckii</i>	NS	May 2000
△ → Balsamroot, Deltoid	<i>Balsamorhiza deltoidea</i>	BC	May 2000
△ → Bluehearts	<i>Buchnera americana</i>	ON	May 2000
△ → Braya, Long's	<i>Braya longii</i>	NF	May 2000
△ Bugbane, Tall	<i>Cimicifuga elata</i>	BC	May 2001
△ ↑ Bulrush, Bashful	<i>Trichophorum planifolium</i>	ON	May 2000
△ → Bush-clover, Slender	<i>Lespedeza virginica</i>	ON	May 2000
△ → Buttercup, Water-plantain	<i>Ranunculus alismaefolius</i> var. <i>alismaefolius</i>	BC	May 2000
△ → Cactus, Eastern Prickly Pear	<i>Opuntia humifusa</i>	ON	May 2000
△ → Coreopsis, Pink	<i>Coreopsis rosea</i>	NS	May 2000
△ → Cryptanthe, Tiny	<i>Cryptantha minima</i>	AB SK	May 2000
△ → Fern, Southern Maidenhair	<i>Adiantum capillus-veneris</i>	BC	May 2000
△ → Gentian, White Prairie	<i>Gentiana alba</i>	ON	May 2001
△ → Ginseng, American	<i>Panax quinquefolium</i>	ON QC	May 2000
△ ↑ Goat's-rue, Virginia	<i>Tephrosia virginiana</i>	ON	May 2000
△ → Goldenrod, Showy	<i>Solidago speciosa</i> var. <i>rigidiuscula</i>	ON	May 2000
△ → Lady's-slipper, Small White	<i>Cypripedium candidum</i>	MB ON	May 2000
△ → Lotus, Seaside Birds-foot	<i>Lotus formosissimus</i>	BC	May 2000
△ → Lousewort, Furbish's	<i>Pedicularis furbishiae</i>	NB	May 2000
△ → Lupine, Prairie	<i>Lupinus lepidus</i> var. <i>lepidus</i>	BC	May 2000
△ → Milkwort, Pink	<i>Polygala incarnata</i>	ON	May 2000
△ → Mountain-mint, Hoary	<i>Pycnanthemum incanum</i>	ON	May 2000
△ → Mulberry, Red	<i>Morus rubra</i>	ON	May 2000
△ → Orchid, Western Prairie Fringed	<i>Platanthera praeclara</i>	MB	May 2000

ENDANGERED CATEGORY (continued)

Plants (cont.)

△ → Owl-clover, Bearded	<i>Triphysaria versicolor</i> ssp. <i>versicolor</i>	BC	May 2000
△ ↑ Paintbrush, Golden	<i>Castilleja levisecta</i>	BC	May 2000
△ → Plantain, Heart-leaved	<i>Plantago cordata</i>	ON	May 2000
△ → Pogonia, Large Whorled	<i>Isotria verticillata</i>	ON	May 2000
△ → Pogonia, Nodding	<i>Triphora trianthophora</i>	ON	May 2000
△ → Pogonia, Small Whorled	<i>Isotria medeoloides</i>	ON	May 2000
△ → Quillwort, Englemann's	<i>Isoetes engelmannii</i>	ON	May 2001
△ → Sanicle, Bear's-foot	<i>Sanicula arctopoides</i>	BC	May 2001
△ ↑ Sedge, False Hop	<i>Carex lupuliformis</i>	ON QC	May 2000
△ → Sedge, Juniper	<i>Carex juniperorum</i>	ON	May 2000
△ → Spike-rush, Horsetail	<i>Eleocharis equisetoides</i>	ON	Nov 2000
△ → Sundew, Thread-leaved	<i>Drosera filiformis</i>	NS	May 2001
△ → Thistle, Pitcher's	<i>Cirsium pitcheri</i>	ON	May 2000
△ → Toothcup	<i>Rotala ramosior</i>	BC ON	May 2000
△ → Tree, Cucumber	<i>Magnolia acuminata</i>	ON	May 2000
△ → Trillium, Drooping	<i>Trillium flexipes</i>	ON	May 2000
△ → Twayblade, Purple	<i>Liparis liliifolia</i>	ON	May 2001
△ → Willow, Barrens	<i>Salix jejuna</i>	NF	May 2001
△ → Wintergreen, Spotted	<i>Chimaphila maculata</i>	ON	May 2000
△ → Wood-poppy	<i>Stylophorum diphyllum</i>	ON	May 2000
△ ↑ Woodsia, Blunt-lobed	<i>Woodsia obtusa</i>	ON QC	May 2000
△ → Woolly-heads, Tall	<i>Psilocarphus elatior</i>	BC	May 2001
	Pacific population		

Mosses (1)

△ ↑ Moss, Apple	<i>Bartramia stricta</i>	BC	May 2000
-----------------	--------------------------	----	----------

Lichens (1)

△ → Seaside Centipede	<i>Heterodermia sitchensis</i>	BC	May 2000
-----------------------	--------------------------------	----	----------

THREATENED CATEGORY (82)

Mammals (13)

△ ↑ Bat, Pallid	<i>Antrozous pallidus</i>	BC	May 2000
△ → Bison, Wood	<i>Bison bison athabascaae</i>	YT NT BC AB	May 2000
△ → Caribou, Peary	<i>Rangifer tarandus pearyi</i>	Low Arctic population	NT NU
△ → Caribou, Woodland	<i>Rangifer tarandus caribou</i>	Southern Mountain population	BC AB
△ → Caribou, Woodland	<i>Rangifer tarandus caribou</i>	Boreal population	NT BC AB SK MB ON
			QC NF
△ ↑ Ermine <i>haidarum</i> subspecies	<i>Mustela erminea haidarum</i>	BC	May 2001
△ → Mole, Townsend's	<i>Scapanus townsendii</i>	BC	Apr 1996
△ → Otter, Sea	<i>Enhydra lutris</i>	Pacific coastal waters	May 2000
△ → Porpoise, Harbour	<i>Phocoena phocoena</i>	Northwest Atlantic population	Atlantic Ocean
△ → Shrew, Pacific Water	<i>Sorex bendirii</i>	BC	May 2000
△ → Whale, Beluga	<i>Delphinapterus leucas</i>	Eastern Hudson Bay population	QC Atlantic Ocean
△ → Whale, Humpback	<i>Megaptera novaeangliae</i>	North Pacific population	Pacific Ocean
△ → Whale, Killer	<i>Orcinus orca</i>	North Pacific "resident" populations	Pacific Ocean

Birds (6)

△ → Falcon, Anatum Peregrine	<i>Falco peregrinus anatum</i>	YT NT NU BC AB SK	May 2000
		MB ON QC NB NS NF	
△ ↑ Goshawk, Queen Charlotte	<i>Accipiter gentilis laingi</i>	BC	Nov 2000
△ → Murrelet, Marbled	<i>Brachyramphus marmoratus</i>	BC	Nov 2000
△ → Pipit, Sprague's	<i>Anthus spragueii</i>	AB SK MB	May 2000
△ → Shrike, Prairie Loggerhead	<i>Lanius ludovicianus excubitorides</i>	AB SK MB	Apr 1986
△ → Warbler, Hooded	<i>Wilsonia citrina</i>	ON	Nov 2000

THREATENED CATEGORY (continued)

Reptiles (6)

	Rattlesnake, Eastern Massasauga	<i>Sistrurus catenatus catenatus</i>	ON	Apr 1991
△ →	Snake, Black Rat	<i>Elaphe obsoleta obsoleta</i>	ON	May 2000
△ →	Snake, Eastern Fox	<i>Elaphe vulpina gloydi</i>	ON	May 2000
△ →	Snake, Queen	<i>Regina septemvittata</i>	ON	May 2000
	Turtle, Blanding's	<i>Emydoidea blandingi</i>	NS	Apr 1993
	Turtle, Spiny Softshell	<i>Apalone spinifera</i>	ON QC	Apr 1991

Amphibians (3)

△	Salamander, Jefferson	<i>Ambystoma jeffersonianum</i>	ON	Nov 2000
△ ↑	Salamander, Pacific Giant	<i>Dicamptodon tenebrosus</i>	BC	Nov 2000
△ →	Toad, Fowler's	<i>Bufo fowleri</i>	ON	Nov 2000

Fishes (18)

	Cisco, Blackfin	<i>Coregonus nigripinnis</i>	ON	Apr 1988
	Cisco, Shortjaw	<i>Coregonus zenithicus</i>	NT AB SK MB ON	Apr 1987
	Cisco, Shortnose	<i>Coregonus reighardi</i>	ON	Apr 1987
	Darter, Channel	<i>Percina copelandi</i>	ON QC	Apr 1993
△ →	Darter, Eastern Sand	<i>Ammocrypta pellucida</i>	ON QC	Nov 2000
△ ↑	Gar, Spotted	<i>Lepisosteus oculatus</i>	ON	Nov 2000
△ ↑	Lamprey, Cowichan Lake	<i>Lampetra macrostoma</i>	BC	Nov 2000
	Madtom, Margined	<i>Noturus insignis</i>	ON QC	Apr 1989
	Redhorse, Black	<i>Moxostoma duquesnei</i>	ON	Apr 1988
	Redhorse, Copper	<i>Moxostoma hubbsi</i>	QC	Apr 1987
△ ↑	Sculpin, Cultus Pygmy	<i>Cottus sp.</i>	BC	Nov 2000
	Sculpin, Deepwater	<i>Myoxocephalus thompsoni</i>	ON	Apr 1987
△ →	Sculpin, Shorthead	<i>Cottus confusus</i>	BC	May 2001
△ →	Smelt, Lake Utopia Dwarf	<i>Osmerus sp.</i>	NB	May 2000
	Sticklebacks, Enos Lake	<i>Gasterosteus spp.</i>	BC	Apr 1987
	Whitefish, Lake	<i>Coregonus clupeaformis</i>	ON	Apr 1987
△	Wolffish, Northern	<i>Anarhichas denticulatus</i>	Arctic Ocean Atlantic Ocean	May 2001
△	Wolffish, Spotted	<i>Anarhichas minor</i>	Arctic Ocean Atlantic Ocean	May 2001

Lepidopterans (2)

△	Hairstreak, Behr's (Columbia)	<i>Satyrnum behrii columbia</i>	BC	Nov 2000
△	Skipper, Dun	<i>Euphyes vestris</i>	BC	Nov 2000

Molluscs (1)

△ →	Abalone, Northern	<i>Haliotis kamtschatkana</i>	Pacific coastal waters	May 2000
-----	-------------------	-------------------------------	------------------------	----------

Plants (33)

△ →	Aster, Anticosti	<i>Symphyotrichum anticostense</i>	QC NB	May 2000
△ ↑	Aster, Western Silver-leaved	<i>Symphyotrichum sericeum</i>	MB ON	May 2000
	Aster, White Wood	<i>Eurybia divaricata</i>	ON QC	Apr 1995
△ →	Aster, White-top	<i>Sericocarpus rigidus</i>	BC	May 2000
△ ↑	Blazing Star, Dense	<i>Liatris spicata</i>	ON	May 2001
△ →	Blue-flag, Western	<i>Iris missouriensis</i>	AB	May 2000
△ →	Braya, Fernald's	<i>Braya fernaldii</i>	NF	May 2000
	Chestnut, American	<i>Castanea dentata</i>	ON	Apr 1987
△ →	Coffee-tree, Kentucky	<i>Gymnocladus dioica</i>	ON	Nov 2000
△ →	Colicroot	<i>Aletris farinosa</i>	ON	Nov 2000
△	Corydalis, Scouler's	<i>Corydalis scouleri</i>	BC	May 2001
△ →	Deerberry	<i>Vaccinium stamineum</i>	ON	Nov 2000
△ →	Fern, Mexican Mosquito	<i>Azolla mexicana</i>	BC	May 2000
△ →	Gentian, Plymouth	<i>Sabatia kennedyana</i>	NS	May 2000
△ →	Golden Crest	<i>Lophiola aurea</i>	NS	May 2000

THREATENED CATEGORY (continued)

Plants (cont.)

△ → Goldenseal	<i>Hydrastis canadensis</i>		ON	May 2000
△ → Greenbrier, Round-leaved	<i>Smilax rotundifolia</i>	Great Lakes Plains population	ON	May 2001
△ → Jacob's Ladder, van Brunt's	<i>Polemonium van-bruntiae</i>		QC	Apr 1994
△ Lily, Lyall's Mariposa	<i>Calochortus lyallii</i>		BC	May 2001
△ → Lipocarpa, Small-flowered	<i>Lipocarpa micrantha</i>		BC ON	Apr 1992
△ ↓ Mouse-ear-cress, Slender	<i>Halimolobos virgata</i>		AB SK	May 2000
△ ↑ Orchid, Phantom	<i>Cephalanthera austini</i>		BC	May 2000
△ → Prairie-clover, Hairy	<i>Dalea villosa</i> var. <i>villosa</i>		SK MB	May 2000
△ → Redroot	<i>Lachnanthes caroliniana</i>		NS	May 2000
△ Sanicle, Purple	<i>Sanicula bipinnatifida</i>		BC	May 2001
△ ↑ Soapweed	<i>Yucca glauca</i>		AB	May 2000
△ Spiderwort, Western	<i>Tradescantia occidentalis</i>		AB MB	Apr 1992
△ Spike-rush, Tubercled	<i>Eleocharis tuberculosa</i>		NS	May 2000
△ Verbena, Sand	<i>Abronia micrantha</i>		AB SK	Apr 1992
△ Violet, Bird's-foot	<i>Viola pedata</i>		ON	Apr 1990
△ → Violet, Yellow Montane	<i>Viola praemorsa</i> ssp. <i>praemorsa</i>		BC	May 2000
△ → Water-pennywort	<i>Hydrocotyle umbellata</i>		NS	May 2000
△ → Water-willow, American	<i>Justicia americana</i>		ON QC	May 2000

Mosses (0)

Lichens (0)

SPECIAL CONCERN CATEGORY (155)

Mammals (25)

Bat, Fringed	<i>Myotis thysanodes</i>		BC	Apr 1988
Bat, Keen's Long-eared	<i>Myotis keenii</i>		BC	Apr 1988
Bat, Spotted	<i>Euderma maculatum</i>		BC	Apr 1988
Bear, Grizzly	<i>Ursus arctos</i>		YT NT NU BC AB	Apr 1991
→ Bear, Polar	<i>Ursus maritimus</i>		YT NT NU MB ON QC	Apr 1999
			NF	
↑ Beaver, Mountain	<i>Aplodontia rufa</i>		BC	Apr 1999
Cottontail, Nuttall's	<i>Sylvilagus nuttallii nuttallii</i>	British Columbia population	BC	Apr 1994
Fox, Grey	<i>Urocyon cinereoargenteus</i>		MB ON QC	Apr 1979
△ → Mole, Eastern	<i>Scalopus aquaticus</i>		ON	Nov 2000
Mouse, Western Harvest	<i>Reithrodontomys megalotis megalotis</i>	British Columbia population	BC	Apr 1994
△ → Prairie Dog, Black-tailed	<i>Cynomys ludovicianus</i>		SK	Nov 2000
Rat, Ord's Kangaroo	<i>Dipodomys ordii</i>		AB SK	Apr 1995
Seal, Harbour	<i>Phoca vitulina mellonae</i>	Lac des Loups Marins landlocked population	QC	Apr 1996
Shrew, Gaspé	<i>Sorex gaspensis</i>		QC NB NS	Apr 1988
Squirrel, Southern Flying	<i>Glaucomys volans</i>		ON QC NB NS	Apr 1988
Vole, Woodland	<i>Microtus pinetorum</i>		ON QC	Apr 1998
Whale, Beluga	<i>Delphinapterus leucas</i>	Eastern High Arctic / Baffin Bay population	NU Arctic Ocean	Apr 1992
Whale, Blue	<i>Balaenoptera musculus</i>		Atlantic Ocean Pacific Ocean	Apr 1983
Whale, Fin	<i>Balaenoptera physalus</i>		Atlantic Ocean Pacific Ocean	Apr 1987
Whale, Humpback	<i>Megaptera novaeangliae</i>	Western North Atlantic population	Atlantic Ocean	Apr 1985
Whale, Killer	<i>Orcinus orca</i>	North Pacific "transient" population	Pacific Ocean	Apr 1999
Whale, Northern Bottlenose	<i>Hyperoodon ampullatus</i>	Gully population	Atlantic Ocean	Apr 1996
Whale, Sowerby's Beaked	<i>Mesoplodon bidens</i>		Atlantic Ocean	Apr 1989
△ Wolf, Eastern	<i>Canis lupus lycaon</i>		ON QC	May 2001
Wolverine	<i>Gulo gulo</i>	Western population	YT NT NU BC AB SK MB ON	Apr 1989

SPECIAL CONCERN CATEGORY (continued)

Birds (23)

→ Bittern, Least	<i>Ixobrychus exilis</i>		MB ON QC NB	Apr 1999
△ → Chat, Eastern Yellow-breasted	<i>Icteria virens virens</i>		ON	Nov 2000
Curlew, Long-billed	<i>Numenius americanus</i>		BC AB SK	Apr 1992
△ ↓ Duck, Harlequin	<i>Histrionicus histrionicus</i>	Eastern population	NU QC NB NS NF	May 2001
→ Falcon, Peale's Peregrine	<i>Falco peregrinus pealei</i>		BC	Apr 1999
↓ Falcon, Tundra Peregrine	<i>Falco peregrinus tundrius</i>		YT NT NU QC NF	Apr 1992
△ Goldeneye, Barrow's	<i>Bucephala islandica</i>	Eastern population	QC NB NS PE NF	Nov 2000
→ Gull, Ivory	<i>Pagophila eburnea</i>		NT NU BC MB ON QC	Apr 1996
→ Gull, Ross'	<i>Rhodostethia rosea</i>		NU MB	Apr 1996
↓ Hawk, Ferruginous	<i>Buteo regalis</i>		AB SK MB	Apr 1995
→ Hawk, Red-shouldered	<i>Buteo lineatus</i>		ON QC	Apr 1996
Heron, Pacific Great Blue	<i>Ardea herodias fannini</i>		BC	Apr 1997
Murrelet, Ancient	<i>Synthliboramphus antiquus</i>		BC	Apr 1993
Owl, Barn	<i>Tyto alba</i>	Western population	BC	Apr 1999
→ Owl, Flammulated	<i>Otus flammeolus</i>		BC	Apr 1999
Owl, Short-eared	<i>Asio flammeus</i>		YT NT NU BC AB SK	Apr 1994
			MB ON QC NB NS PE	
			NF	
Rail, Yellow	<i>Coturnicops noveboracensis</i>		NT AB SK MB ON QC	Apr 1999
			NB NS PE	
△ → Sparrow, "Ipswich" Savannah	<i>Passerculus sandwichensis princeps</i>		NS	May 2000
Thrush, Bicknell's	<i>Catharus bicknelli</i>		QC NB NS	Apr 1999
Warbler, Cerulean	<i>Dendroica cerulea</i>		ON QC	Apr 1993
→ Waterthrush, Louisiana	<i>Seiurus motacilla</i>		ON QC	Apr 1996
Woodpecker, Lewis'	<i>Melanerpes lewis</i>		BC	Apr 1999
Woodpecker, Red-headed	<i>Melanerpes erythrocephalus</i>		SK MB ON QC	Apr 1996

Reptiles (8)

Lizard, Eastern Short-horned	<i>Phrynosoma douglassii brevirostre</i>		AB SK	Apr 1992
Racer, Eastern Yellow-bellied	<i>Coluber constrictor flaviventris</i>		SK	Apr 1991
Skink, Five-lined	<i>Eumeces fasciatus</i>		ON	Apr 1998
Skink, Northern Prairie	<i>Eumeces septentrionalis septentrionalis</i>		MB	Apr 1989
Snake, Butler's Garter	<i>Thamnophis butleri</i>		ON	Apr 1999
Snake, Eastern Hognose	<i>Heterodon platirhinos</i>		ON	Apr 1997
Turtle, Spotted	<i>Clemmys guttata</i>		ON QC	Apr 1991
Turtle, Wood	<i>Clemmys insculpta</i>		ON QC NB NS	Apr 1996

Amphibians (9)

△ Frog, Coast Tailed	<i>Ascaphus truei</i>		BC	May 2000
Frog, Northern Leopard	<i>Rana pipiens</i>	Prairie population	AB SK MB	Apr 1998
Frog, Northern Red-legged	<i>Rana aurora</i>		BC	Apr 1999
Salamander, Coeur d'Alène	<i>Plethodon idahoensis</i>		BC	Apr 1998
Salamander, Mountain Dusky	<i>Desmognathus ochrophaeus</i>		QC	Apr 1998
Salamander, Smallmouth	<i>Ambystoma texanum</i>		ON	Apr 1991
Salamander, Spring	<i>Gyrinophilus porphyriticus</i>		QC	Apr 1999
Toad, Great Basin Spadefoot	<i>Spea intermontana</i>		BC	Apr 1998
Toad, Great Plains	<i>Bufo cognatus</i>		AB SK MB	Apr 1999

Fishes (40)

Buffalo, Bigmouth	<i>Ictiobus cyprinellus</i>		SK MB ON	Apr 1989
Buffalo, Black	<i>Ictiobus niger</i>		ON	Apr 1989
△ → Chub, Silver	<i>Macrhybopsis storeriana</i>		MB ON	May 2001
Chubsucker, Lake	<i>Erismyzon sucetta</i>		ON	Apr 1994
Cisco, Spring	<i>Coregonus sp.</i>		QC	Apr 1992
Cod, Atlantic	<i>Gadus morhua</i>	Atlantic Ocean		Apr 1998
Dace, Redside	<i>Clinostomus elongatus</i>		ON	Apr 1987
Dace, Speckled	<i>Rhinichthys osculus</i>		BC	Apr 1980

SPECIAL CONCERN CATEGORY (continued)

Fishes (cont.)

	Dace, Umatilla	<i>Rhinichthys umatilla</i>	BC	Apr 1988
	Darter, Greenside	<i>Etheostoma blennioides</i>	ON	Apr 1990
	Killifish, Banded	<i>Fundulus diaphanus</i>	NF	Apr 1989
	Kiyi	<i>Coregonus kiyi</i>	ON	Apr 1988
	Lamprey, Chestnut	<i>Ichthyomyzon castaneus</i>	SK MB	Apr 1991
	Lamprey, Northern Brook	<i>Ichthyomyzon fossor</i>	MB ON QC	Apr 1991
○	Madtom, Northern	<i>Noturus stigmosus</i>	ON	Apr 1998
△	→ Minnow, Pugnose	<i>Opsopoeodus emiliae</i>	ON	May 2000
	Minnow, Western Silvery	<i>Hybognathus argyritis</i>	AB	Apr 1997
	Prickleback, Blackline	<i>Acantholumpenus mackayi</i>	Arctic Ocean	Apr 1989
	→ Redhorse, River	<i>Moxostoma carinatum</i>	ON QC	Apr 1987
	Sardine, Pacific	<i>Sardinops sagax</i>	Pacific Ocean	Apr 1987
△	Sculpin, Columbia Mottled	<i>Cottus bairdi hubbsi</i>	BC	May 2000
	Sculpin, Fourhorn	<i>Myoxocephalus quadricornis</i>	NT NU Arctic Islands	Apr 1989
	Shiner, Bigmouth	<i>Notropis dorsalis</i>	MB	Apr 1985
	Shiner, Bridle	<i>Notropis bifrenatus</i>	ON	Apr 1999
	Shiner, Pugnose	<i>Notropis anogenus</i>	ON	Apr 1985
	Shiner, Rosyface	<i>Notropis rubellus</i>	MB	Apr 1994
→	Shiner, Silver	<i>Notropis photogenis</i>	ON	Apr 1987
	Stickleback, Charlotte	<i>Gasterosteus aculeatus</i>	BC	Apr 1983
	Unarmoured			
	Stickleback, Giant	<i>Gasterosteus sp.</i>	BC	Apr 1980
	Sturgeon, Green	<i>Acipenser medirostris</i>	BC	Apr 1987
	Sturgeon, Shortnose	<i>Acipenser brevirostrum</i>	NB	Apr 1980
	Sturgeon, White	<i>Acipenser transmontanus</i>	BC	Apr 1990
→	Sucker, Spotted	<i>Minytrema melanops</i>	ON	Apr 1994
	Sunfish, Orangespotted	<i>Lepomis humilis</i>	ON	Apr 1989
	Sunfish, Redbreast	<i>Lepomis auitus</i>	NB	Apr 1989
△	→ Topminnow, Blackstripe	<i>Fundulus notatus</i>	ON	May 2001
	Warmouth	<i>Lepomis gulosus</i>	ON	Apr 1994
	Whitefish, Squanga	<i>Coregonus sp.</i>	YT	Apr 1987
△	Wolffish, Atlantic	<i>Anarhichas lupus</i>	North Atlantic Ocean	Nov 2000
	Wolffish, Bering	<i>Anarhichas orientalis</i>	Arctic Ocean	Apr 1989

Lepidopterans (2)

	Monarch	<i>Danaus plexippus</i>	BC AB SK MB ON QC	Apr 1997
			NB NS PE NF	
△	Weidemeyer's Admiral	<i>Limenitis weidemeyerii</i>	AB	May 2000

Molluscs (1)

△	Oyster, Olympia	<i>Ostrea conchaphila</i>	BC	Nov 2000
---	-----------------	---------------------------	----	----------

Plants (44)

△ ↓	Ash, Blue	<i>Fraxinus quadrangulata</i>	ON	Nov 2000
	Aster, Bathurst	<i>Symphyotrichum subulatum</i>	NB	Apr 1992
	Aster, Crooked-stem	<i>Symphyotrichum prenanthoides</i>	ON	Apr 1999
	Aster, Gulf of St. Lawrence	<i>Symphyotrichum laurentianum</i>	QC NB PE	Apr 1989
	Aster, Willow	<i>Symphyotrichum praealtum</i>	ON	Apr 1999
	Bartonia, Branched	<i>Bartonia paniculata</i> ssp. <i>paniculata</i>	ON	Apr 1992
	Buffalograss	<i>Buchloë dacyioides</i>	SK MB	Apr 1998
	Bulrush, Long's	<i>Scirpus longii</i>	NS	Apr 1994
	Columbo, American	<i>Frasera caroliniensis</i>	ON	Apr 1993
△	Fern, American Hart's-tongue	<i>Asplenium scolopendrium</i> var. <i>americanum</i>	ON	Nov 2000
	Fern, Broad Beech	<i>Phegopteris hexagonoptera</i>	ON QC	Apr 1983
	Fern, Coastal Wood	<i>Dryopteris arguta</i>	BC	Apr 1998
	Fleabane, Provancher's	<i>Erigeron philadelphicus</i> ssp. <i>provancheri</i>	QC	Apr 1992
	Gentian, Victorin's	<i>Gentianopsis victorinii</i>	QC	Apr 1987
△	Goldenrod, Riddell's	<i>Solidago riddellii</i>	MB ON	Nov 2000
	Goosefoot, Smooth	<i>Chenopodium subglabrum</i>	AB SK MB	Apr 1992

SPECIAL CONCERN CATEGORY (continued)

Plants (cont.)

	Green Dragon	<i>Arisaema dracontium</i>	ON QC	Apr 1984
	Hackberry, Dwarf	<i>Celtis tenuifolia</i>	ON	Apr 1985
	Hairgrass, Mackenzie	<i>Deschampsia mackenziana</i>	SK	Apr 1999
↓	Helleborine, Giant	<i>Epipactis gigantea</i>	BC	Apr 1998
	Hop-tree, Common	<i>Ptelea trifoliata</i>	ON QC	Apr 1984
	Hyacinth, Wild	<i>Camassia scilloides</i>	ON	Apr 1990
→	Indian-plantain, Tuberous	<i>Arnoglossum plantagineum</i>	ON	Apr 1999
	Lilaeopsis	<i>Lilaeopsis chinensis</i>	NS	Apr 1987
	Locoweed, Hare-footed	<i>Oxytropis lagopus</i>	AB	Apr 1995
	Meadowfoam, Macoun's	<i>Limnanthes macounii</i>	BC	Apr 1988
	Milk-vetch, Fernald's	<i>Astragalus robbinsii</i> var. <i>fernaldii</i>	QC NF	Apr 1997
→	Oak, Shumard	<i>Quercus shumardii</i>	ON	Apr 1999
	Orchid, Eastern Prairie Fringed	<i>Platanthera leucophaea</i>	ON	Apr 1986
△*	↓ Pepperbush, Sweet	<i>Clethra alnifolia</i>	NS	May 2001
	Pondweed, Hill's	<i>Potamogeton hillii</i>	ON	Apr 1986
	Quillwort, Bolander's	<i>Isoetes bolanderi</i>	AB	Apr 1995
	Rose, Climbing Prairie	<i>Rosa setigera</i>	ON	Apr 1986
	Rose-mallow, Swamp	<i>Hibiscus moscheutos</i>	ON	Apr 1987
	Rue-anemone, False	<i>Enemion biternatum</i>	ON	Apr 1990
	Rush, New Jersey	<i>Juncus caesariensis</i>	NS	Apr 1992
△	Tansy, Floccose	<i>Tanacetum huronense</i> var. <i>floccosum</i>	SK	May 2000
	↓ Thrift, Athabasca	<i>Armeria maritima</i> ssp. <i>interior</i>	SK	Apr 1999
	Water-hemlock, Victorin's	<i>Cicuta maculata</i> var. <i>victorinii</i>	QC	Apr 1987
△	Willow, Felt-leaf	<i>Salix silicicola</i>	NU SK	May 2000
△	Willow, Sand-dune	<i>Salix brachycarpa</i> var. <i>psammophila</i>	SK	May 2000
	Short-capsuled	<i>Salix tumorii</i>	SK	May 2000
△	Willow, Tumor's	<i>Psilocarphus elatior</i>	AB SK	May 2000
△	Woolly-heads, Tall	<i>Achillea millefolium</i> var. <i>megacephalum</i>	SK	May 2000
△	Yarrow, Large-headed Woolly			
		Prairie population		

Mosses (0)

Lichens (3)

Cryptic Paw	<i>Nephroma occultum</i>	BC	Apr 1995
Oldgrowth Specklebelly	<i>Pseudocyphellaria rainierensis</i>	BC	Apr 1996
Seaside Bone	<i>Hypogymnia heterophylla</i>	BC	Apr 1996

List 2. Species examined and designated in the NOT AT RISK category with geographical occurrence and date of last examination (140 species).

Mammals (47)

△	Badger <i>taxus</i> subspecies, American	<i>Taxidae taxus taxus</i>		AB SK MB	May 2000
—	Bear, American Black	<i>Ursus-americanus</i>		YT NT NU BC AB SK MB ON QC NB NS NF	Apr 1999
△	— Caribou, Woodland	<i>Rangifer tarandus caribou</i>	Newfoundland population	NF	May 2000
△	— Caribou, Woodland	<i>Rangifer tarandus caribou</i>	Northern Mountain population	YT NT BC	May 2000
—	Cottontail, Nuttall's	<i>Sylvilagus nuttallii pinetis</i>	Prairie population	AB SK	Apr 1994
	Dolphin, Atlantic White-sided	<i>Lagenorhynchus acutus</i>		Atlantic Ocean	Apr 1991
	Dolphin, Bottlenose	<i>Tursiops truncatus</i>		Atlantic Ocean	Apr 1993
	Dolphin, Common	<i>Delphinus delphis</i>		Atlantic Ocean Pacific Ocean	Apr 1991
	Dolphin, Northern Right Whale	<i>Lissodelphis borealis</i>		Pacific Ocean	Apr 1990
	Dolphin, Pacific White-sided	<i>Lagenorhynchus obliquidens</i>		Pacific Ocean	Apr 1990
	Dolphin, Risso's	<i>Grampus griseus</i>		Atlantic Ocean Pacific Ocean	Apr 1990
	Dolphin, Striped	<i>Stenella coeruleoalba</i>		Atlantic Ocean Pacific Ocean	Apr 1993
	Dolphin, White-beaked	<i>Lagenorhynchus albirostris</i>		North Atlantic Ocean	Apr 1998
✓	Gopher, Plains Pocket	<i>Geomys bursarius</i>		MB	Apr 1998
△	— Lynx, Canada	<i>Lynx canadensis</i>		YT NT NU BC AB SK MB ON QC NB NS NF	May 2001
—	Narwhal	<i>Monodon monceros</i>		Arctic Ocean	Apr 1987
	Porpoise, Dall's	<i>Phocoenoides dalli</i>		Pacific Ocean	Apr 1989
	Sea Lion, California	<i>Zalophus californianus</i>		Pacific coastal waters	Apr 1987
	Sea Lion, Steller	<i>Eumetopias jubatus</i>		Pacific coastal waters	Apr 1987
	Seal, Bearded	<i>Erignathus barbatus</i>		Arctic and Atlantic coastal waters	Apr 1994
	Seal, Grey	<i>Halichoerus grypus</i>		Atlantic coastal waters	Apr 1999
	Seal, Harbour	<i>Phoca vitulina richardsi</i>		Pacific coastal waters	Apr 1999
	Seal, Hooded	<i>Cystophora cristata</i>		Atlantic coastal waters	Apr 1986
	Seal, Northern Elephant	<i>Mirounga angustirostris</i>		Pacific coastal waters	Apr 1986
	Seal, Northern Fur	<i>Callorhinus ursinus</i>		Pacific coastal waters	Apr 1996
	Seal, Ringed	<i>Phoca hispida</i>		Arctic and Atlantic coastal waters	Apr 1989
	Squirrel, Cascade Mantled Ground	<i>Spermophilus saturatus</i>		BC	Apr 1992
	Squirrel, Fox	<i>Sciurus niger</i>		MB ON	Apr 1979
	Walrus, Atlantic	<i>Odobenus rosmarus rosmarus</i>	Eastern Arctic population	Arctic Ocean	Apr 1987
✓	Weasel, Long-tailed	<i>Mustela frenata longicauda</i>	Prairie population	AB SK MB	Apr 1993
	Whale, Baird's Beaked	<i>Berardius bairdii</i>		Pacific Ocean	Apr 1992
	Whale, Beluga	<i>Delphinapterus leucas</i>	Beaufort Sea / Arctic Ocean population	Arctic Ocean	Apr 1985
	Whale, Beluga	<i>Delphinapterus leucas</i>	Western Hudson Bay population	Arctic Ocean	Apr 1993
	Whale, Blainville's Beaked	<i>Mesoplodon densirostris</i>		Atlantic Ocean	Apr 1989
	Whale, Cuvier's Beaked	<i>Ziphius cavirostris</i>		Atlantic Ocean Pacific Ocean	Apr 1990
	Whale, False Killer	<i>Pseudorca crassidens</i>		Pacific Ocean	Apr 1990
	Whale, Grey	<i>Eschrichtius robustus</i>	Northeast Pacific population	Pacific Ocean	Apr 1987
	Whale, Hubb's Beaked	<i>Mesoplodon carlhubbsi</i>		Pacific Ocean	Apr 1989
	Whale, Long-finned Pilot	<i>Globicephala melas</i>		Atlantic Ocean	Apr 1994
	Whale, Northern Bottlenose	<i>Hyperoodon ampullatus</i>		Atlantic Ocean	Apr 1993
	Whale, Pygmy Sperm	<i>Kogia breviceps</i>		Atlantic Ocean Pacific Ocean	Apr 1994
	Whale, Short-finned Pilot	<i>Globicephala macrorhynchus</i>		Pacific Ocean	Apr 1993

NOT AT RISK CATEGORY (continued)

Mammals (cont.)

Whale, Sperm	<i>Physeter macrocephalus</i>
Whale, Stejneger's Beaked	<i>Mesoplodon stejnegeri</i>
Whale, True's Beaked	<i>Mesoplodon mirus</i>
Wolf, Northern Grey	<i>Canis lupus occidentalis</i>
Wolf, Southern Grey	<i>Canis lupus nubilus</i>

Atlantic Ocean	Pacific Ocean	Apr 1996
Pacific Ocean		Apr 1989
Atlantic Ocean		Apr 1989
YT NT NU BC AB SK		Apr 1999
MB ON QC NF		
BC		Apr 1999

Birds (35)

✓ Bluebird, Eastern	<i>Sialia sialis</i>	
△ → Chat, Western Yellow-breasted	<i>Icteria virens auricollis</i>	Prairie population
Coot, American	<i>Fulica americana</i>	
Cormorant, Double-crested	<i>Phalacrocorax auritus</i>	
Crane, Greater Sandhill	<i>Grus canadensis tabida</i>	
Eagle, Bald	<i>Haliaeetus leucocephalus</i>	
→ Eagle, Golden	<i>Aquila chrysaetos</i>	
→ Falcon, Prairie	<i>Falco mexicanus</i>	
Flycatcher, Grey	<i>Empidonax wrightii</i>	
Goshawk, Northern	<i>Accipiter gentilis atricapillus</i>	
Grebe, Red-necked	<i>Podiceps grisegena</i>	
→ Gyrfalcon	<i>Falco rusticolus</i>	
Harrier, Northern	<i>Circus cyaneus</i>	
✓ Hawk, Cooper's	<i>Accipiter cooperii</i>	
Hawk, Red-tailed	<i>Buteo jamaicensis</i>	
Hawk, Rough-legged	<i>Buteo lagopus</i>	
→ Hawk, Sharp-shinned	<i>Accipiter striatus</i>	
Loon, Common	<i>Gavia immer</i>	
Loon, Yellow-billed	<i>Gavia adamsii</i>	
Merlin	<i>Falco columbarius</i>	
Owl, Boreal	<i>Aegolius funereus</i>	
✓ Owl, Great Grey	<i>Strix nebulosa</i>	
Owl, Northern Hawk	<i>Surnia ulula</i>	
Owl, Snowy	<i>Nyctea scandiaca</i>	
✓ Pelican, American White	<i>Pelecanus erythrorhynchos</i>	
Screech-Owl, Eastern	<i>Otus asio</i>	
✓ Sparrow, Baird's	<i>Ammodramus bairdii</i>	
Sparrow, Nelson's Sharp-tailed	<i>Ammodramus nelsoni</i>	
✓ Swan, Trumpeter	<i>Cygnus buccinator</i>	
→ Tern, Black	<i>Chlidonias niger</i>	
✓ Tern, Caspian	<i>Sterna caspia</i>	
Tern, Common	<i>Sterna hirundo</i>	

AB SK MB ON QC NB NS PE	Apr 1996
AB SK	Nov 2000
YT NT NU BC AB SK	Apr 1991
MB ON QC NB NS	
YT NT BC AB SK MB	Apr 1978
ON QC NB NS PE NF	
BC MB ON	Apr 1979
YT NT NU BC AB SK	Apr 1984
MB ON QC NB NS PE NF	
YT NT NU BC AB SK	Apr 1996
MB ON QC NF	
BC AB SK	Apr 1996
BC	Apr 1992
YT NT NU BC AB SK	Apr 1995
MB ON QC NB NS PE NF	
YT NT NU BC AB SK	Apr 1982
MB ON QC NS NF	
YT NT NU BC AB SK	Apr 1987
ON QC NS PE NF	
YT NT NU BC AB SK	Apr 1993
MB ON QC NB NS PE NF	
BC AB SK MB ON QC	Apr 1996
NB NS	
YT NT NU BC AB SK	Apr 1995
MB ON QC NB NS PE NF	
YT NT NU BC MB ON QC NF	Apr 1995
YT NT NU BC AB SK	Apr 1997
MB ON QC NB NS PE NF	
YT NT NU BC AB SK	Apr 1997
MB ON QC NB NS PE NF	
YT NT NU BC AB MB QC	Apr 1997
YT NT NU BC AB SK	Apr 1985
MB ON QC NB NS PE NF	
YT NT NU BC AB SK	Apr 1995
MB ON QC NB NS PE NF	
YT NT BC AB SK MB ON QC	Apr 1996
YT NT BC AB SK MB	Apr 1992
ON QC NB NF	
YT NT NU MB QC NF	Apr 1995
BC AB SK MB ON	Apr 1987
SK MB ON QC NB	Apr 1986
AB SK MB	Apr 1996
BC AB SK MB ON QC	Apr 1998
NB NS PE	
YT NT BC AB SK ON	Apr 1996
NT BC AB SK MB ON	Apr 1996
QC NB NS	
NT BC AB SK MB ON QC NF	Apr 1999
NT AB SK MB ON QC	Apr 1998
NB NS PE NF	

NOT AT RISK CATEGORY (continued)

Birds (cont.)

✓ Warbler, Prairie	<i>Dendroica discolor</i>	ON	Apr 1999
Wren, Canyon	<i>Catherpes mexicanus</i>	BC	Apr 1992
Wren, Sedge	<i>Cistothorus platensis</i>	AB SK MB ON QC NB	Apr 1993

Reptiles (1)

Racer, Western Yellow-bellied	<i>Coluber constrictor mormon</i>	BC	Apr 1991
-------------------------------	-----------------------------------	----	----------

Amphibians (10)

Ensatina	<i>Ensatina eschscholtzii</i>	BC	Apr 1999
△ Frog, Columbia Spotted	<i>Rana luteiventris</i>	YT BC AB	May 2000
Frog, Northern Leopard	<i>Rana pipiens</i>	ON QC NB NS NF	Apr 1999
Frog, Pickerel	<i>Rana palustris</i>	ON QC NB NS	Apr 1999
△ Frog, Western Chorus	<i>Pseudacris triseriata</i>	ON QC	May 2001
△ Mudpuppy	<i>Necturus maculosus</i>	MB ON QC	May 2000
Salamander, Four-toed	<i>Hemidactylium scutatum</i>	ON QC NB NS	Apr 1999
Salamander, Northern Dusky	<i>Desmognathus fuscus</i>	ON QC NB	Apr 1999
Salamander, Northwestern	<i>Ambystoma gracile</i>	BC	Apr 1999
Treefrog, Cope's Grey	<i>Hyla chrysoscelis</i>	MB	Apr 1999

Fishes (31)

Bloater	<i>Coregonus hoyi</i>	ON	Apr 1988
Chub, Hornyhead	<i>Nocomis biguttatus</i>	MB ON	Apr 1988
Chub, River	<i>Nocomis micropogon</i>	ON	Apr 1988
Dace, Leopard	<i>Rhinichthys falcatus</i>	BC	Apr 1990
Darter, Least	<i>Etheostoma microperca</i>	ON	Apr 1989
Darter, River	<i>Percina shumardi</i>	MB ON	Apr 1989
Darter, Tessellated	<i>Etheostoma olmstedii</i>	ON QC	Apr 1993
Herring, Blueback	<i>Alosa aestivalis</i>	NB NS	Apr 1980
Killifish, Banded	<i>Fundulus diaphanus</i>	MB ON QC NB NS PE	Apr 1989
△ ✓ Madtom, Brindled	<i>Noturus miurus</i>	NF	May 2001
Minnow, Bluntnose	<i>Pimephales notatus</i>	ON	Apr 1998
Minnow, Cutlips	<i>Exoglossum maxillingua</i>	MB ON QC	Apr 1998
Minnow, Eastern Silvery	<i>Hybognathus regius</i>	ON QC	Apr 1994
Pickerel, Chain	<i>Esox niger</i>	ON QC	Apr 1997
Pickerel, Redfin	<i>Esox americanus americanus</i>	QC NB NS	Apr 1997
Redhorse, Golden	<i>Moxostoma erythrurum</i>	QC	Apr 1998
Sculpin, Fourhorn	<i>Myoxocephalus quadricornis</i>	MB ON	Apr 1989
Sculpin, Spoonhead	<i>Cottus ricei</i>	Salt water form	Apr 1989
Shiner, Blackchin	<i>Notropis heterodon</i>	Arctic Ocean Atlantic	Apr 1989
Shiner, Ghost	<i>Notropis buechanani</i>	Ocean Pacific Ocean	Apr 1989
Shiner, Redfin	<i>Lythrurus umbratilis</i>	YT NT BC AB SK MB	Apr 1989
Shiner, Rosyface	<i>Notropis rubellus</i>	ON QC	Apr 1994
Shiner, Striped	<i>Luxilus chrysocephalus</i>	ON	Apr 1993
Shiner, Weed	<i>Notropis texanus</i>	MB	Apr 1999
Silverside, Brook	<i>Labidesthes sicculus</i>	ON QC	Apr 1989
✓ Stoneroller, Central	<i>Campostoma anomalum</i>	ON	Apr 1998
Sturgeon, Lake	<i>Acipenser fulvescens</i>	AB SK MB ON QC	Apr 1986
Sucker, Mountain	<i>Catostomus platyrhynchus</i>	BC AB SK	Apr 1991
Sunfish, Green	<i>Lepomis cyanellus</i>	ON	Apr 1987
Sunfish, Longear	<i>Lepomis megalotis</i>	ON QC	Apr 1987
Y-Prickleback	<i>Alloleupenpus hypochromus</i>	BC	Apr 1991

NOT AT RISK CATEGORY (continued)

Lepidopterans (0)

Molluscs (0)

Plants (16)

Aster, Short's	<i>Symphyotrichum shortii</i>	ON	Apr 1999
Aster, Yukon	<i>Symphyotrichum yukonense</i>	YT NT	Apr 1996
Brickellia, Large-flowered	<i>Brickellia grandiflora</i>	BC AB	Apr 1996
Fameflower	<i>Talinum sedifforme</i>	BC	Apr 1990
Fleabane, Dwarf	<i>Erigeron radicans</i>	AB SK	Apr 1996
Goldenweed, Northern Mock	<i>Stenotus borealis</i>	YT	Apr 1997
Mermaid, False	<i>Floerkea proserpinacoides</i>	ON QC NS	Apr 1984
Phlox, Blue	<i>Phlox alyssifolia</i>	AB SK	Apr 1996
Rhododendron, Pacific	<i>Rhododendron macrophyllum</i>	BC	Apr 1997
Rush, Pink	<i>Stephanomeria runcinata</i>	AB SK	Apr 1996
Sagebrush, Wood's	<i>Artemisia rupestris</i> ssp. <i>woodii</i>	YT	Apr 1997
Sedge, Nebraska	<i>Carex nebrascensis</i>	AB	Apr 1995
Stitchwort, Sand	<i>Stellaria arenicola</i>	AB SK	Apr 1992
Wallflower, Narrow-leaved	<i>Erysimum angustatum</i>	YT	Apr 1993
✓ Willow, Tyrrell's	<i>Salix tyrrellii</i>	SK	Apr 1999
Wooly-heads, Slender	<i>Psilocarphus tenellus</i> var. <i>tenellus</i>	BC	Apr 1996

Mosses (0)

Lichens (0)

List 3. Species examined and designated in the DATA DEFICIENT category because of insufficient scientific information, with geographic occurrence and date of last examination (23 species).

Mammals (8)

○ Cougar	<i>Puma concolor cougar</i>	Eastern population	ON QC NB NS	Apr 1998
Mouse, Western Harvest	<i>Reithrodontomys megalotis dychei</i>	Prairie population	AB	Apr 1994
Porpoise, Harbour	<i>Phocoena phocoena</i>	Pacific-Ocean population	Pacific Ocean	Apr 1991
Seal, Harbour	<i>Phoca vitulina concolor</i>		Atlantic and Arctic coastal waters	Apr 1999
Vole, Sagebrush	<i>Lemmyscus curtatus</i>		AB SK	Apr 1996
Whale, Dwarf Sperm	<i>Kogia simus</i>		Pacific Ocean	Apr 1997
Whale, Killer	<i>Orcinus orca</i>	North Atlantic and Arctic populations	Arctic Ocean Atlantic Ocean	Apr 1999
Wolf, Arctic Grey	<i>Canis lupus arctos</i>		NT NU	Apr 1999

Birds (3)

Poorwill, Common	<i>Phalaenoptilus nuttallii</i>		BC AB SK	Apr 1993
Screech-Owl, Western	<i>Otus kennicottii</i>		BC	Apr 1995
Tern, Forster's	<i>Sterna forsteri</i>		BC AB SK MB ON	Apr 1996

Reptiles (0)

Fishes (7)

Catfish, Flathead	<i>Pylodictis olivaris</i>		ON	Apr 1993
Chiselmouth	<i>Acrocheilus alutaceus</i>		BC	Apr 1997
Cisco, Bering	<i>Coregonus laurettae</i>		YT	Apr 1990
Lamprey, Darktail	<i>Lethenteron alaskense</i>		NT	Apr 1990
Poacher, Pixie	<i>Ocella impi</i>		BC	Apr 1991
Sculpin, Spiny-nose	<i>Asemichthys taylori</i>		Pacific coast	Apr 1997
△ → Whitefish, Lake	<i>Coregonus clupeaformis</i>	Mira River population	NS	Nov 2000

Lepidopterans (0)

Molluscs (1)

Snail, Gatineau Tadpole	<i>Physella parkeri latchfordi</i>		QC	Apr 1997
-------------------------	------------------------------------	--	----	----------

Plants (4)

Barley, Little	<i>Hordeum pusillum</i>		AB	Apr 1993
Goldenweed, Rabbit-brush	<i>Ericameria bloomeri</i>		BC	Apr 1997
Pinweed, Impoverished	<i>Lechea intermedia</i> var. <i>depauperata</i>		SK	Apr 1997
Whitlow-grass, Kananaskis	<i>Draba kananaskis</i>		AB	Apr 1992

Mosses (0)

Lichens (0)

RECORD OF STATUS RE-EXAMINATIONS

Acadian Flycatcher

Designated Endangered in April 1994. Status re-examined and confirmed in November 2000.

American Badger

Designated Not at Risk in April 1979. Original Canada-wide listing de-activated in May 2000 when the American Badger was split according to subspecies.

American Black Bear

Designated Not at Risk in April 1998. Status re-examined and confirmed in April 1999.

American Ginseng

Designated Threatened in April 1988. Status re-examined and uplisted to Endangered in April 1999. Status re-examined and confirmed Endangered in May 2000.

American Marten (Newfoundland population)

Designated Not at Risk in April 1979. Status re-examined and uplisted to Threatened in April 1986. Status re-examined and uplisted to Endangered in April 1996. Status re-examined and confirmed Endangered in May 2000.

American Water-willow

Designated Threatened in April 1984. Status re-examined and confirmed in May 2000.

American White Pelican

Designated Threatened in April 1978. Status re-examined and de-listed (Not at Risk) in April 1987.

Anatum Peregrine Falcon

Designated Endangered in April 1978. Status re-examined and downlisted to Threatened in April 1999. Status re-assessed and confirmed Threatened in May 2000.

Anticosti Aster

Designated Threatened in April 1990. Status re-examined and confirmed in May 2000.

Apple Moss

Designated Threatened in April 1997. Status re-examined and uplisted to Endangered in May 2000.

Athabasca Thrift

Designated Threatened in April 1981. Status re-examined and downlisted to Special Concern in April 1999.

Atlantic Walrus (Northwest Atlantic population)

Extirpated around 1850. Designated Extirpated in April 1987. Status confirmed in May 2000.

Atlantic Whitefish

Designated Endangered in April 1984. Status re-examined and confirmed in November 2000.

Aurora Trout

Designated Endangered in April 1987. Status re-examined and confirmed in May 2000.

Baird's Sparrow

Designated Threatened in April 1989. Status re-examined and de-listed (Not at Risk) in April 1996.

Banff Longnose Dace

Extinct since 1986. Designated Extinct in April 1987. Status confirmed in May 2000.

Banff Springs Snail

Designated Threatened in April 1997. Status re-examined and uplisted to Endangered in May 2000.

Barn Owl

Canadian range was considered as a whole when the Barn Owl was designated as Special Concern in April 1984. In April 1999, COSEWIC assessed the Western and Eastern populations of this species separately. The original listing for the Canadian range of the Barn Owl was de-activated.

Barn Owl (Eastern population)

Canadian range was considered as a whole when the Barn Owl was designated as Special Concern in April 1984. In April 1999, COSEWIC assessed the Western and Eastern populations of this species separately. The Eastern population was designated Endangered. Status re-examined and confirmed in May 2000.

Bashful Bulrush

Designated Special Concern in April 1986. Status re-examined and uplisted to Endangered in May 2000.

Bearded Owl-clover

Designated Endangered in April 1998. Status re-examined and confirmed in May 2000.

Beluga Whale (St. Lawrence River population)

Designated Endangered in April 1983. Status re-examined and confirmed in April 1997.

Benthic Hadley Lake Stickleback

Extinct in 1999. Designated Extinct in April 1999. Status confirmed in May 2000.

RECORD OF STATUS RE-EXAMINATIONS (cont.)

Benthic Paxton Lake Stickleback

Designated Threatened in April 1998. Status re-examined and confirmed in April 1999. Status re-examined and uplisted to Endangered in May 2000.

Benthic Vananda Creek Stickleback

Designated Threatened in April 1999. Status re-examined and uplisted to Endangered in May 2000.

Black Rat Snake

Designated Threatened in April 1998. Status re-examined and confirmed in May 2000.

Black Tern

Designated Not at Risk in April 1988. Status re-examined and confirmed in April 1996.

Black-footed Ferret

Extirpated by 1974. Designated Extirpated in April 1978. Status confirmed in May 2000.

Black-tailed Prairie Dog

Designated Special Concern in April 1978. Status re-examined and confirmed Special Concern in April 1988, April 1999 and in November 2000.

Blackstripe Topminnow

Designated Special Concern in April 1985. Status re-examined and confirmed in May 2001.

Blue Ash

Designated Threatened in April 1983. Status re-examined and downlisted to Special Concern in November 2000.

Blue Walleye

Extinct since 1965. Designated Extinct in April 1985. Status confirmed in May 2000.

Blue-eyed Mary

No site records since 1954. Designated Extirpated in April 1987. Extirpated status confirmed in May 2000.

Bluehearts

Designated Threatened in April 1985. Status re-examined and uplisted to Endangered in April 1998. Status re-examined and confirmed in May 2000.

Blunt-lobed Woodsia

Designated Threatened in April 1994. Status re-examined and uplisted to Endangered in May 2000.

Bowhead Whale (Eastern and Western Arctic Populations)

Designated Endangered in April 1980. Split into two populations (Eastern Arctic and Western Arctic) to allow a separate designation for the Western Arctic population in April 1986. Original listing was de-activated.

Brindled Madtom

Designated Special Concern in April 1985. Status re-examined and de-listed (Not at Risk) in May 2001.

Burrowing Owl

Designated Threatened in April 1979. Status re-examined and confirmed in April 1991. Status re-examined and uplisted to Endangered in April 1995. Status re-examined and confirmed Endangered in May 2000.

Canada Lynx

Designated Not at Risk in April 1989. Status re-examined and confirmed in May 2001.

Caspian Tern

Designated Special Concern in April 1978. Status re-examined and de-listed (Not at Risk) in April 1999.

Central Stoneroller

Designated Special Concern in 1985. Status re-examined and de-listed (Not at Risk) in 1998.

Colicroot

Designated Threatened in April 1988. Status re-examined and confirmed in November 2000.

Cooper's Hawk

Designated Special Concern in April 1983. Status re-examined and de-listed (Not at Risk) in April 1996.

Cougar (Eastern population)

Designated Endangered in April 1978. Status re-examined in April 1998 and designated Data Deficient.

Cowichan Lake Lamprey

Designated Special Concern in April 1986. Status re-examined and confirmed in April 1998. Status re-examined and uplisted to Threatened in November 2000.

Cucumber Tree

Designated Endangered in April 1984. Status re-examined and confirmed Endangered in April 1999 and in May 2000.

Cultus Pygmy Sculpin

Designated Special Concern in April 1997. Status re-examined and uplisted to Threatened in November 2000.

RECORD OF STATUS RE-EXAMINATIONS (cont.)

Deepwater Cisco

Extinct since 1952. Designated Extinct in April 1988. Status confirmed in May 2000.

Deerberry

Designated Threatened in April 1994. Status re-examined and confirmed in November 2000.

Deltoid Balsamroot

Designated in April 1996 Endangered. Status re-examined and confirmed Endangered in May 2000.

Dense Blazing Star

Designated Special Concern in April 1988. Status re-examined and uplisted to Threatened in May 2001.

Drooping Trillium

Designated Endangered in April 1996. Status re-assessed and confirmed in May 2000.

Dwarf Wedgemussel

Extirpated by 1968. Designated Extirpated in April 1999. Status confirmed in May 2000.

Eastern Bluebird

Designated Special Concern in April 1984. Status re-examined and de-listed (Not at Risk) in April 1996.

Eastern Fox Snake

Designated Threatened in April 1999. Status re-examined and confirmed in May 2000.

Eastern Loggerhead Shrike

Entire Canadian range designated as Threatened in April 1986. Split according to subspecies in April 1991. The *migrans* subspecies was uplisted to Endangered in April 1991. Status re-examined and confirmed in November 2000.

Eastern Mole

Designated Special Concern in April 1980. Status re-examined and confirmed Special Concern in April 1998 and in November 2000.

Eastern Mountain Avens

Designated Endangered in April 1986. Status re-examined and confirmed Endangered in April 1999 and May 2000.

Eastern Prickly Pear Cactus

Designated Endangered in April 1985. Status re-examined and confirmed Endangered in April 1998 and in May 2000.

Eastern Sand Darter

Designated Threatened in April 1994. Status re-examined and confirmed in November 2000.

Eastern Wolf

Designated Data Deficient in April 1999. Status re-examined in May 2001 and designated Special Concern.

Eastern Yellow-breasted Chat

Designated Special Concern in April 1994. Status re-examined and confirmed in November 2000.

Eelgrass Limpet

Extinct since 1929. Designated Extinct in April 1996. Status re-examined and confirmed in May 2000.

Engelmann's Quillwort

Designated Endangered in April 1992. Status re-examined and confirmed in May 2001.

Ermine *haidarum* subspecies

Designated Special Concern in April 1984. Status re-examined and uplisted to Threatened in May 2001.

Eskimo Curlew

Designated Endangered in April 1978. Status re-examined and confirmed Endangered in May 2000.

False Hop Sedge

Designated Threatened in April 1997. Status re-examined and uplisted to Endangered in May 2000.

Fernald's Braya

Designated Threatened in April 1997. Status re-examined and confirmed in May 2000.

Ferruginous Hawk

Designated Threatened in April 1980. Status re-examined and downlisted to Special Concern in April 1995.

Flammulated Owl

Designated Special Concern in April 1988. Status re-examined and confirmed Special Concern in April 1999.

Fowler's Toad

Designated Special Concern in April 1986. Status re-examined and uplisted to Threatened in April 1999. Status re-examined and confirmed in November 2000.

RECORD OF STATUS RE-EXAMINATIONS (cont.)

Frosted Elfin

Extirpated by 1988. Designated Extirpated in April 1999. Status confirmed in May 2000.

Furbish's Lousewort

Designated Endangered in April 1980. Status re-examined and confirmed Endangered in April 1998 and in May 2000.

Gattinger's Agalinis

Designated Endangered in April 1988. Status re-examined and confirmed in April 1999 and in May 2001.

Giant Helleborine

Designated Threatened in April 1984. Status re-examined and downlisted to Special Concern in April 1998.

Golden Crest

Designated Threatened in April 1987. Status re-examined and confirmed Threatened in April 1999 and in May 2000.

Golden Eagle

Designated Not at Risk in April 1987. Status re-examined and confirmed in April 1996.

Golden Paintbrush

Designated Threatened in April 1995. Status re-examined and uplisted to Endangered in May 2000.

Goldenseal

Designated Threatened in April 1991. Status re-examined and confirmed in May 2000.

Gravel Chub

Last recorded in Thames River drainage, ON in 1958. Designated Endangered in April 1985. Status re-examined and uplisted to Extirpated in April 1987. Extirpated status confirmed in May 2000.

Great Auk

Believed to be Extinct since 1844. Designated in April 1985 based on historic records only. Status report prepared and approved by COSEWIC in 1994. Status confirmed in May 2000.

Great Grey Owl

Designated Special Concern in April 1979. Status re-examined and confirmed in April 1990. Status re-examined and de-listed (Not at Risk) in April 1996.

Greater Prairie-Chicken

Last reported in 1987. Designated Endangered in April 1978. Status re-examined and uplisted to Extirpated in April 1990. Status re-confirmed in May 2000.

Grey Whale (Atlantic population)

Extirpated before the end of the 1800's. Designated Extirpated in April 1987. Status confirmed in May 2000.

Grizzly Bear (Prairie population)

Canadian range considered as one population and designated Not at Risk in April 1979. Split into two populations in April 1991 (Prairie population and [non-prairie population]). Prairie population designated Extirpated in April 1991. The species disappeared from the prairies in the 1880s. Status confirmed in May 2000.

Grizzly Bear

Canadian range considered as one population and designated Not at Risk in April 1979. Split into two populations in April 1991 (Prairie population and [non-prairie population]). Original listing for "Grizzly Bear" across Canada de-activated.

Gyr Falcon

Designated Not at Risk in April 1978. Status re-examined and confirmed in April 1987.

Hairy Prairie-clover

Designated Threatened in April 1998. Status re-examined and confirmed in May 2000.

Harbour Porpoise (Northwest Atlantic population)

Designated Threatened in April 1990. Status re-examined and confirmed in April 1991.

Harlequin Duck (Eastern population)

The Eastern population was designated Endangered in April 1990. Status re-examined and downlisted to Special Concern in May 2001.

Heart-leaved Plantain

Designated Endangered in April 1985. Status re-examined and confirmed Endangered in April 1998 and in May 2000.

Henslow's Sparrow

Designated Threatened in April 1984. Status re-examined and uplisted to Endangered in April 1993. Status re-examined and confirmed in November 2000.

Hoary Mountain-mint

Designated Endangered in April 1986. Status re-examined and confirmed Endangered in April 1998 and in May 2000.

RECORD OF STATUS RE-EXAMINATIONS (cont.)

Hooded Warbler

Designated Threatened in April 1994. Status re-examined and confirmed in November 2000.

Hotwater Physa

Designated Endangered in April 1998. Status re-examined and confirmed in May 2000.

Humpback Whale (Western North Atlantic and North Pacific populations)

The "Western North Atlantic and North Pacific populations" were given a single designation of Threatened in April 1982. Split into two populations in April 1985 (Western North Atlantic population and North Pacific population). Original listing was de-activated.

Illinois Tick-trefoil

No site records since 1888. Designated Extirpated in April 1991. Extirpated status confirmed in May 2000.

"Ipswich" Savannah Sparrow

Designated Special Concern in April 1979. Status re-examined and confirmed Special Concern in May 2000.

Island Marble

Extirpated by 1910. Designated Extirpated in April 1999. Status confirmed in May 2000.

Ivory Gull

Designated Special Concern in April 1979. Status re-examined and confirmed in April 1996.

Juniper Sedge

Designated Endangered in April 1999. Status re-examined and confirmed in May 2000.

Karner Blue

Has not been observed since 1991. Designated Extirpated in April 1997. Extirpated status confirmed in May 2000.

Kentucky Coffee-tree

Designated Threatened in April 1983. Status re-examined and confirmed in November 2000.

King Rail

Designated Special Concern in April 1985. Status re-examined and uplisted to Endangered in April 1994. Status re-examined and confirmed in November 2000.

Kirtland's Warbler

Designated Endangered in April 1979. Status re-examined and confirmed in April 1999 and in May 2000.

Labrador Duck

Believed to be Extinct since 1875. Designated in April 1985 based on historic records only. Status report prepared and approved by COSEWIC in 1994. Status confirmed in May 2000.

Lake Utopia Dwarf Smelt

Designated Threatened in April 1998. Status re-examined and confirmed in May 2000.

Lake Whitefish (Mira River population)

Designated Data Deficient in April 1999 and in November 2000.

Large Whorled Pogonia

Designated Endangered in April 1986. Status re-examined and confirmed Endangered in April 1998 and in May 2000.

Least Bittern

Designated Special Concern in April 1988. Status re-examined and confirmed in April 1999.

Leatherback Turtle

Designated Endangered in April 1981. Status re-examined and confirmed in May 2001.

Limnetic Hadley Lake Stickleback

Extinct in 1999. Designated Extinct in April 1999. Status confirmed in May 2000.

Limnetic Paxton Lake Stickleback

Designated Threatened in April 1998. Status re-examined and confirmed in April 1999. Status re-examined and uplisted to Endangered in May 2000.

Limnetic Vananda Creek Stickleback

Designated Threatened in April 1999. Status re-examined and uplisted to Endangered in May 2000.

Loggerhead Shrike

Entire Canadian range was designated as Threatened in April 1986. The *excubitorides* and the *migrans* subspecies were designated separately in April 1991, and the original listing was de-activated.

Long's Braya

Designated Endangered in April 1997. Status re-examined and confirmed in May 2000.

RECORD OF STATUS RE-EXAMINATIONS (cont.)

Long-tailed Weasel (Prairie population)

Designated Threatened in April 1982. Status re-examined and de-listed (Not at Risk) in April 1993.

Longjaw Cisco

Extinct since 1975. Designated Extinct in April 1985. Status confirmed in May 2000.

Louisiana Waterthrush

Designated Special Concern in April 1991. Status re-examined and confirmed in April 1996.

Marbled Murrelet

Designated Threatened in April 1990. Status re-examined and confirmed in November 2000.

Maritime Ringlet

Designated Endangered in April 1997. Status re-examined and confirmed in May 2000.

Mexican Mosquito Fern

Designated Threatened in April 1984. Status re-examined and confirmed in April 1998 and in May 2000.

Morrison Creek Lamprey

Designated Threatened in April 1999. Status re-examined and uplisted to Endangered in May 2000.

Mountain Beaver

Designated Not at Risk in April 1984. Status re-examined and uplisted to Special Concern in April 1999.

Mountain Plover

Designated Endangered in April 1987. Status re-examined and confirmed November 2000.

Narwhal

Designated Not at Risk in April 1986. Status re-examined and confirmed in April 1987.

Nodding Pogonia

Designated Threatened in April 1988. Status re-examined and uplisted to Endangered in April 1999. Status re-examined and confirmed Endangered in May 2000.

Nooksack Dace

Designated Endangered in April 1996. Status re-examined and confirmed in May 2000.

Northern Abalone

Designated Threatened in April 1999. Status re-examined and confirmed in May 2000.

Northern Cricket Frog

Designated Endangered in April 1990. Status re-examined and confirmed in May 2001.

Northern Leopard Frog (Southern Mountain population)

Designated Endangered in April 1998. Status re-examined and confirmed in May 2000.

Northern Madtom

Examined in April 1993 and placed in the Data Deficient category. Re-examined in April 1998 and designated Special Concern.

Northern Riffleshell

Designated Endangered in April 1999. Status re-examined and confirmed in May 2000.

Northern Spotted Owl

Designated Endangered in April 1986. Status re-examined and confirmed in April 1999 and in May 2000.

Nuttall's Cottontail (Prairie population)

Designated Not at Risk in 1994. Status re-examined and confirmed in April 1994.

Oregon Spotted Frog

Designated Endangered in an emergency listing in November 1999. Status re-examined and confirmed in May 2000.

Pacific Giant Salamander

Designated Special Concern in April 1989. Status re-examined and uplisted to Threatened in November 2000.

Pacific Water Shrew

Designated Threatened in April 1994. Status re-examined and confirmed Threatened in May 2000.

Paddlefish

Disappeared from Canada in approximately 1917. Designated Extirpated in April 1987. Status confirmed in May 2000.

Pallid Bat

Designated Special Concern in April 1988. Status re-examined and uplisted to Threatened in May 2000.

RECORD OF STATUS RE-EXAMINATIONS (cont.)

Passenger Pigeon

Believed to be Extinct since 1914. Designated in April 1985 based on historic records only. Status report prepared and approved by COSEWIC in 1994. Status confirmed in May 2000.

Peale's Peregrine Falcon

Designated Special Concern in April 1978. Status re-examined and confirmed in April 1999.

Peary Caribou

The Canadian range of the Peary Caribou was considered as a whole in April 1979 and designated Threatened. In April 1991, the population was split to allow designation of three separate populations (Banks Island, High Arctic and Low Arctic populations). The original listing was de-activated.

Phantom Orchid

Designated Special Concern in April 1992. Status re-examined and uplisted to Threatened in May 2000.

Pink Coreopsis

Designated Endangered in April 1984. Status re-examined and confirmed Endangered in April 1999 and in May 2000.

Pink Milkwort

Designated Endangered in April 1984. Status re-examined and confirmed Endangered in April 1998 and in May 2000.

Piping Plover

Entire Canadian population designated Threatened in April 1978. Status re-examined and uplisted to Endangered in April 1985. In May 2001, the species was re-examined and split into two groups according to subspecies. The *melodus* subspecies and *circumcinctus* subspecies were each designated Endangered in May 2001. The original listing for the entire Canadian population was de-activated.

Pitcher's Thistle

Designated Threatened in April 1988. Status re-examined and uplisted to Endangered in April 1999. Status re-examined and confirmed Endangered in May 2000.

Plains Pocket Gopher

Designated Special Concern in April 1979. Status re-examined and de-listed (Not at Risk) in April 1998.

Plymouth Gentian

Designated Threatened in April 1984. Status re-examined and confirmed in April 1999 and in May 2000.

Polar Bear

Designated Not at Risk in April 1986. Status re-examined and uplisted to Special Concern in April 1991. Status re-examined and confirmed as Special Concern in April 1999.

Prairie Falcon

Designated Not at Risk in April 1978. Status re-examined and confirmed in April 1982 and in April 1996.

Prairie Lupine

Designated Endangered in April 1996. Status re-examined and confirmed in May 2000.

Prairie Warbler

Designated Special Concern in April 1985. Status re-examined and de-listed (Not at Risk) in April 1999.

Prothonotary Warbler

Designated Special Concern in April 1984. Status re-examined and uplisted to Endangered in April 1996. Status re-examined and confirmed in May 2000.

Pugnose Minnow

Designated Special Concern in April 1985. Status re-examined and confirmed in May 2000.

Purple Twayblade

Designated Threatened in April 1989. Status re-examined and uplisted to Endangered in April 1999. Status re-examined and confirmed as Endangered in May 2001.

Pygmy Short-horned Lizard (British Columbia population)

Last reported in 1898. Designated Extirpated in April 1992. Status confirmed in May 2000.

Queen Charlotte Goshawk

Designated Special Concern in April 1995. Status re-examined and uplisted to Threatened in November 2000.

Queen Snake

Designated Threatened in April 1999. Status re-examined and confirmed in May 2000.

Rayed Bean

Designated Endangered in April 1999. Status re-examined and confirmed in May 2000.

RECORD OF STATUS RE-EXAMINATIONS (cont.)

Red Mulberry

Designated Threatened in April 1987. Status re-examined and uplisted to Endangered in April 1999. Status re-examined and confirmed Endangered in May 2000.

Red-shouldered Hawk

Designated Special Concern in April 1983. Status re-examined and confirmed in April 1996.

Redroot

Designated Threatened in April 1994. Status re-examined and confirmed in May 2000.

Right Whale

Designated Endangered in 1980. Status re-examined and confirmed Endangered in April 1985 and in April 1990.

River Redhorse

Designated Special Concern in April 1983. Status re-examined and confirmed in April 1987.

Roseate Tern

Designated Threatened in April 1986. Status re-examined and uplisted to Endangered in April 1999. Endangered status re-examined and confirmed in October 1999.

Ross' Gull

Designated Special Concern in April 1981. Status re-examined and confirmed in April 1996.

Round-leaved Greenbrier (Great Lakes Plains population)

Designated Threatened in April 1994. Status re-examined and confirmed in May 2001.

Sage Grouse (British Columbia population)

Has not been reported since the 1960's. Designated Extirpated in April 1997. Extirpated status confirmed in May 2000.

Sage Grouse (Prairie population)

Given conditional designation of Threatened in April 1997. Status re-examined and uplisted to Endangered in April 1998 based on a revised status report. Status re-examined confirmed Endangered in May 2000.

Sage Thrasher

Designated Endangered in April 1992. Status re-examined and confirmed in November 2000.

Scarlet Ammannia

Designated Endangered in April 1999. Status re-examined and confirmed in May 2001.

Sea Mink

Believed Extinct since 1894. Designated Extinct in April 1986. Status confirmed in May 2000.

Sea Otter

Designated Endangered in April 1978. Status re-examined and confirmed Endangered in April 1986. Status re-examined and downlisted to Threatened in April 1996. Status re-examined and confirmed Threatened in May 2000.

Seaside Birds-foot Lotus

Designated Endangered in April 1996. Status re-examined and confirmed in May 2000.

Seaside Centipede

Designated Endangered in April 1996. Status re-examined and confirmed in May 2000.

Sharp-shinned Hawk

Designated Not at Risk in April 1986. Status re-examined and confirmed in April 1997.

Sharp-tailed Snake

Designated Endangered in April 1999. Status re-examined and confirmed in October 1999.

Shorthead Sculpin

Designated Threatened in April 1984. Status re-examined and confirmed Threatened in May 2001.

Showy Goldenrod

Designated Endangered in April 1999. Status re-examined and confirmed in May 2000.

Shumard Oak

Designated Special Concern in April 1984. Status re-examined and confirmed in April 1999.

Silver Chub

Designated Special Concern in April 1985. Status re-examined and confirmed in May 2001.

Silver Shiner

Designated Special Concern in April 1983. Status re-examined and confirmed in April 1987.

RECORD OF STATUS RE-EXAMINATIONS (cont.)

Skinner's Agalinis

Designated Endangered in April 1988. Status re-examined and confirmed Endangered in April 1999 and in May 2000.

Slender Bush-clover

Designated Endangered in April 1986. Status re-examined and confirmed Endangered in April 1999 and in May 2000.

Slender Mouse-ear-cress

Designated Endangered in April 1992. Status re-examined and downlisted to Threatened in May 2000.

Small White Lady's-slipper

Designated Endangered in April 1981. Status re-examined and confirmed in April 1999 and in May 2000.

Small Whorled Pogonia

Designated Endangered in April 1982. Status re-examined and confirmed in April 1998 and in May 2000.

Soapweed

Designated Special Concern in April 1985. Status re-examined and uplisted to Threatened in May 2000.

Southern Maidenhair Fern

Designated Endangered in April 1984. Status re-examined and confirmed in April 1998 and in May 2000.

Spotted Gar

Designated Special Concern in April 1983. Status re-examined and confirmed Special Concern in April 1994. Status re-examined and uplisted to Threatened in November 2000.

Spotted Sucker

Designated Special Concern in April 1983. Status re-examined and confirmed in April 1994.

Spotted Wintergreen

Designated Endangered in April 1987. Status re-examined and confirmed Endangered in April 1998 and in May 2000.

Sprague's Pipit

Designated Threatened in April 1999. Status re-examined and confirmed in May 2000.

Sweet Pepperbush

Designated Threatened in April 1986. Status re-examined and confirmed in April 1998. Status re-examined and downlisted to Special Concern in May 2001.

Swift Fox

Last seen in Saskatchewan in 1928. Designated Extirpated in April 1978. Status re-examined and downlisted to Endangered in April 1998 after successful re-introductions. Status re-examined and confirmed Endangered in May 2000.

Thread-leaved Sundew

Designated Endangered in April 1991. Status re-examined and confirmed in May 2001.

Tiny Cryptanthe

Designated Endangered in April 1998. Status re-examined and confirmed in May 2000.

Toothcup

Designated Endangered in April 1999. Status re-examined and confirmed in May 2000.

Trumpeter Swan

Designated Special Concern in April 1978. Status re-examined and de-listed (Not at Risk) in April 1996.

Tuberous Indian-plantain

Designated Special Concern in April 1988. Status re-examined and confirmed in April 1999.

Tundra Peregrine Falcon

Designated Threatened in April 1978. Status re-examined and downlisted to Special Concern in April 1992.

Tyrrell's Willow

Designated Threatened in April 1981. Status re-examined and de-listed (Not at Risk) in April 1999.

Vancouver Island Marmot

Designated Endangered in April 1978. Status re-examined and confirmed Endangered in April 1997 and in May 2000.

Virginia Goat's-rue

Designated Threatened in April 1996. Status re-examined and uplisted to Endangered in May 2000.

Water-pennywort

Designated Endangered in April 1985. Status re-examined and downlisted to Threatened in April 1999. Status re-examined and confirmed Threatened in May 2000.

RECORD OF STATUS RE-EXAMINATIONS (cont.)

Water-plantain Buttercup

Designated Endangered in April 1996. Status re-examined and confirmed in May 2000.

Wavy-rayed Lampmussel

Designated Endangered in April 1999. Status re-examined and confirmed in October 1999.

Western Blue-flag

Designated Threatened in April 1990. Status re-examined and confirmed in May 2000.

Western Prairie Fringed Orchid

Designated Endangered in April 1993. Status re-examined and confirmed in May 2000.

Western Silver-leaved Aster

Designated Special Concern in 1988. Status re-examined and uplisted to Threatened in May 2000.

Western Yellow-breasted Chat (Prairie population)

The Prairie population of the *auricollis* subspecies was designated Not at Risk in April 1994. Status re-examined and confirmed in November 2000.

Western Yellow-breasted Chat (British Columbia population)

The British Columbia population of the *auricollis* subspecies was designated Threatened in April 1994. Status re-examined and uplisted to Endangered in November 2000.

White Prairie Gentian

Designated Endangered in April 1991. Status re-examined and confirmed in May 2001.

White-headed Woodpecker

Designated Threatened in April 1992. Status re-examined and uplisted to Endangered in November 2000.

White-top Aster

Designated Threatened in April 1996. Status re-examined and confirmed in May 2000.

Whooping Crane

Designated Endangered in April 1978. Status re-examined and confirmed in November 2000.

Wolverine

Canadian range considered as one population in April 1982 and designated Special Concern. Split into two populations in April 1989 (Western and Eastern populations). Original listing was de-activated.

Wood Bison

Designated Endangered in April 1978. Status re-examined and downlisted to Threatened in April 1988. Status re-examined and confirmed Threatened in May 2000.

Wood-poppy

Designated Endangered in April 1993. Status re-examined and confirmed in May 2000.

Woodland Caribou (Atlantic-Gaspésie population)

Atlantic-Gaspésie population designated as Threatened in April 1984. Status re-examined and uplisted to Endangered in May 2000.

Woodland Caribou (Labrador-Ungava population)

Labrador-Ungava population designated Not at Risk in April 1984. Labrador-Ungava population de-activated in May 2000.

Woodland Caribou (Western population)

Western population designated Special Concern in April 1984. Western population de-activated in May 2000. Former Western population is contained within the following newly designated populations: Northern Mountain, Southern Mountain, Boreal.

Woodland Caribou (Newfoundland population)

Newfoundland population designated Not at Risk in April 1984. Status re-examined and confirmed in May 2000.

Woodland Caribou Dawson's subspecies

Extinct by the 1920's. Designated Extinct in April 1984. Status confirmed in May 2000.

Yellow Montane Violet

Designated Threatened in April 1995. Status re-examined and confirmed in May 2000.

LIST OF NAME CHANGES

Cross-reference of common and scientific names (including population names, where applicable) for COSEWIC-listed species. Most of the names in this list have been used by COSEWIC in the past but are no longer in use. Some common synonyms also are included.

Current Common Name or Scientific Name (population)	Previous Name(s) or Synonym
<i>Acris crepitans</i>	<i>Acris crepitans blanchardi</i>
Arctic Grey Wolf	Grey Wolf
<i>Arnoglossum plantagineum</i>	<i>Cacalia plantaginea</i>
<i>Ascaphus montanus</i>	<i>Ascaphus truei</i> (Southern Mountain population)
<i>Ascaphus truei</i>	<i>Ascaphus truei</i> (Pacific Coast population); <i>Ascaphus truei</i> (Southern Mountain population)*
Atlantic Whitefish	Acadian Whitefish
Bashful Bulrush	Few-flowered Club-rush
Benthic Paxton Lake Stickleback	Benthic Texada Island Stickleback
<i>Bufo fowleri</i>	<i>Bufo woodhousii fowleri</i>
Canada Lynx	Lynx
Coast Tailed Frog	Tailed Frog (Pacific Coast population)
<i>Coregonus clupeaformis</i> (Lake Simcoe population)	<i>Coregonus clupeaformis</i>
<i>Coregonus clupeaformis</i> (Mira River population)	<i>Coregonus clupeaformis</i>
<i>Coregonus huntsmani</i>	<i>Coregonus canadensis</i>
Cowichan Lake Lamprey	Lake Lamprey
Eastern Wolf	Eastern Grey Wolf; Grey Wolf
Eastern Loggerhead Shrike	Loggerhead Shrike (Eastern population)
Eastern Yellow-breasted Chat	Yellow-breasted Chat (Eastern population)
Eelgrass Limpet	Bowl Limpet
<i>Enemion biternatum</i>	<i>Isopyrum biternatum</i>
Ermine <i>haidarum</i> subspecies	Ermine (Queen Charlotte Islands population)
<i>Eurybia divaricata</i>	<i>Aster divaricatus</i>
<i>Gentianopsis victorinii</i>	<i>Gentiana victorinii</i>
<i>Gymnocladus dioicus</i>	<i>Gymnocladus dioica</i>
<i>Icteria virens virens</i>	<i>Icteria virens virens</i> (Eastern population)
Lake Whitefish (Lake Simcoe population)	Lake Simcoe Whitefish
Lake Whitefish (Mira River population)	Mira River Whitefish
Limnetic Paxton Lake Stickleback	Limnetic Texada Island Stickleback
<i>Lanius ludovicianus excubitorides</i>	<i>Lanius ludovicianus excubitorides</i> (Prairie population)
<i>Lanius ludovicianus migrans</i>	<i>Lanius ludovicianus migrans</i> (Eastern population)
<i>Lottia alveus alveus</i>	<i>Lottia alveus</i>
Mudpuppy Mussel	Salamander Mussel
<i>Mustela erminea haidarum</i>	<i>Mustela erminea haidarum</i> (Queen Charlotte Islands population)
Northern Cricket Frog	Blanchard's Cricket Frog

**Current Common Name or
Scientific Name (population)**

Previous Name(s) or Synonym

Northern Spotted Owl
 Prairie Loggerhead Shrike
Rangifer tarandus dawsoni
 Rocky Mountain Tailed Frog
Sericocarpus rigidus
 Southern Grey Wolf
 Sowerby's Beaked Whale
Stenotus borealis
Strix occidentalis caurina
Symphyotrichum anticostense
Symphyotrichum laurentianum
Symphyotrichum praealtum
Symphyotrichum prenanthoides
Symphyotrichum sericeum
Symphyotrichum shortii
Symphyotrichum subulatum (Bathurst population)
Symphyotrichum yukonense
Trichophorum planifolium
 Western Yellow-breasted Chat (British Columbia population)
 Western Yellow-breasted Chat (Prairie population)
 Woodland Caribou Dawson's subspecies

Spotted Owl
 Loggerhead Shrike (Prairie population)
Rangifer tarandus dawsoni (Queen Charlotte Islands population)
 Tailed Frog (Southern Mountain population)
Aster curtus
 Grey Wolf
 North Sea Beaked Whale
Haplopappus macleanii
Strix occidentalis
Aster anticostensis
Aster laurentianus
Aster praealtus
Aster prenanthoides
Virgulus sericeus
Aster shortii
Aster subulatus var. *obtusifolius*
Aster yukonensis
Scirpus verecundus
 Yellow-breasted Chat (British Columbia population)
 Yellow-breasted Chat (Prairie population)
 Woodland Caribou (Queen Charlotte Islands population)

*now known as *Ascapus montanus*.

LIBRARY
 CANADA CENTRE FOR INLAND WATERS
 867 LAKESHORE ROAD
 BURLINGTON, ONTARIO, CANADA
 L7R 4A6

COSEWIC
Species Specialist Groups and Secretariat Contacts (2001-2002)

Chair, COSEWIC
Dr. David M. Green
Redpath Museum, McGill University
859 Sherbrooke Street, West
Montreal, QC, H3A 2K6

SPECIES SPECIALIST GROUPS

Amphibians & Reptiles
Co-chair
Dr. David M. Green
Redpath Museum, McGill University
859 Sherbrooke Street, West
Montreal, QC H3A 2K6

Co-chair
Dr. Ronald J. Brooks
Department of Zoology
College of Biological Science
University of Guelph
Guelph, ON, N1G 2W1

Terrestrial Mammals

Chair
Dr. Marco Festa-Bianchet
Département de biologie
Université de Sherbrooke
Sherbrooke, QC, J1K 2R1

Birds

Co-chair
Gilles Seutin
Parcs Canada
25, rue Eddy, 4^e étage
Hull, QC K1A 0M5

Co-chair
Richard (Dick) Cannings
1330 East Debeck Road
Site 11, Comp. 96, RR # 1
Naramata, BC, V0H 1N0

Lepidopterans & Molluscs

Co-chair
Dr. Theresa Fowler (Lepidoptera)
Canadian Wildlife Service
Environment Canada
Ottawa, ON, K1A 0H3

Co-chair
Dr. Gerald L. Mackie (Mollusca)
College of Biological Sciences
University of Guelph
Guelph, ON, N1G 2W1

Marine Mammals

Chair
Dr. Andrew Trites
Marine Mammal Research Unit
Fisheries Centre
University of British Columbia
2205 Main Mall, Vancouver B.C. V6T 1Z4

Plants & Lichens

Co-chair
Dr. Erich Haber (Vascular Plants
& Lichens)
National Botanical Services
604 Wavell Avenue
Ottawa, ON, K2A 3A8

Co-chair
Dr. René Belland (Mosses)
Devonian Botanic Garden
University of Alberta
Edmonton, AB, T6G 2E1

Marine Fishes

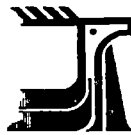
Co-chair (Atlantic)
Dr. Richard L. Haedrich
Department of Biology
Memorial University of Newfoundland
St. John's, NF, A1B 5S7

Co-chair (Pacific)
Dr. Mart R. Gross
Department of Zoology
University of Toronto
Suite 503
25 Harbord St.
Toronto, ON, M5S 3G5

Freshwater Fishes

Co-chair
Dr. Robert Campbell
131 Dahlia Avenue
Ottawa, ON, K1A 6G1

Co-chair
Dr. Claude Renaud
Canadian Museum of Nature
P.O. Box 3443, Station D
Ottawa, ON, K1P 6P4



The Committee on the Status of Endangered Wildlife in Canada (COSEWIC) was created in 1977 as a result of a recommendation at the Federal-Provincial Wildlife Conference held in 1976. It arose from the need for a single, official, scientifically sound, national listing of wildlife species at risk. In 1978, COSEWIC designated its first species and produced its first list of Canadian species at risk. Species designated at meetings of the full committee are added to the list.



**Environment
Canada**

**Canadian Wildlife
Service**

**Environnement
Canada**

**Service canadien
de la faune**

The Canadian Wildlife Service, Environment Canada, provides full administrative and financial support to the COSEWIC Secretariat.