

**BULLETIN
OF
INITIAL ASSESSMENT DECISIONS**

**UNDER
THE FEDERAL ENVIRONMENTAL ASSESSMENT AND REVIEW PROCESS**

EDITION 1
APRIL 1 - AUGUST 31
1986

NOTE

This is the first edition of the Bulletin of Initial Assessment Decisions. The initial assessment decisions of all departments are not in this first edition. Some departments are still establishing their own policy, responsibilities, and procedures related to implementation of the Environmental Assessment and Review Process. Summaries of their initial assessment decisions will be reported in forthcoming editions.

INTRODUCTION

Initial assessment is part of the federal Environmental Assessment and Review Process (EARP) which is used to implement Government policy on environmental assessment. Initial assessment helps determine the potential environmental and directly related social implications of proposals for which the government has a decision-making responsibility. This Bulletin contains summaries of decisions about proposals made as a result of initial assessment.

EARP is to be used early in planning before irrevocable decisions or actions are taken. Guidelines on this policy were issued by Order in Council June 21, 1984.

This Guidelines Order applies to all federal departments, boards, agencies. Parent corporations are expected to make this part of their corporate policy unless this is not possible within the legislative authority of the corporation. The Order also applies to agencies that deal with regulation of certain activities unless this would cause a duplication of procedures or legislation does not permit their decisions to be based on environmental factors. In this publication all these are referred to as departments.

EARP consists of two possible phases: initial assessment and public review. This Bulletin deals with the decisions arising from the first phase. It is published quarterly by the Federal Environmental Assessment Review Office (FEARO) and is supplementary to the "Initial Assessment Guide" to EARP (also published by FEARO) that provides federal departments with procedural guidelines for the initial environmental assessment of proposals.

INITIAL ASSESSMENT

Initial assessment is used when a department intends to undertake any proposal of its own. It is also used when a department has the authority to make a decision about a proposal of another organization that:

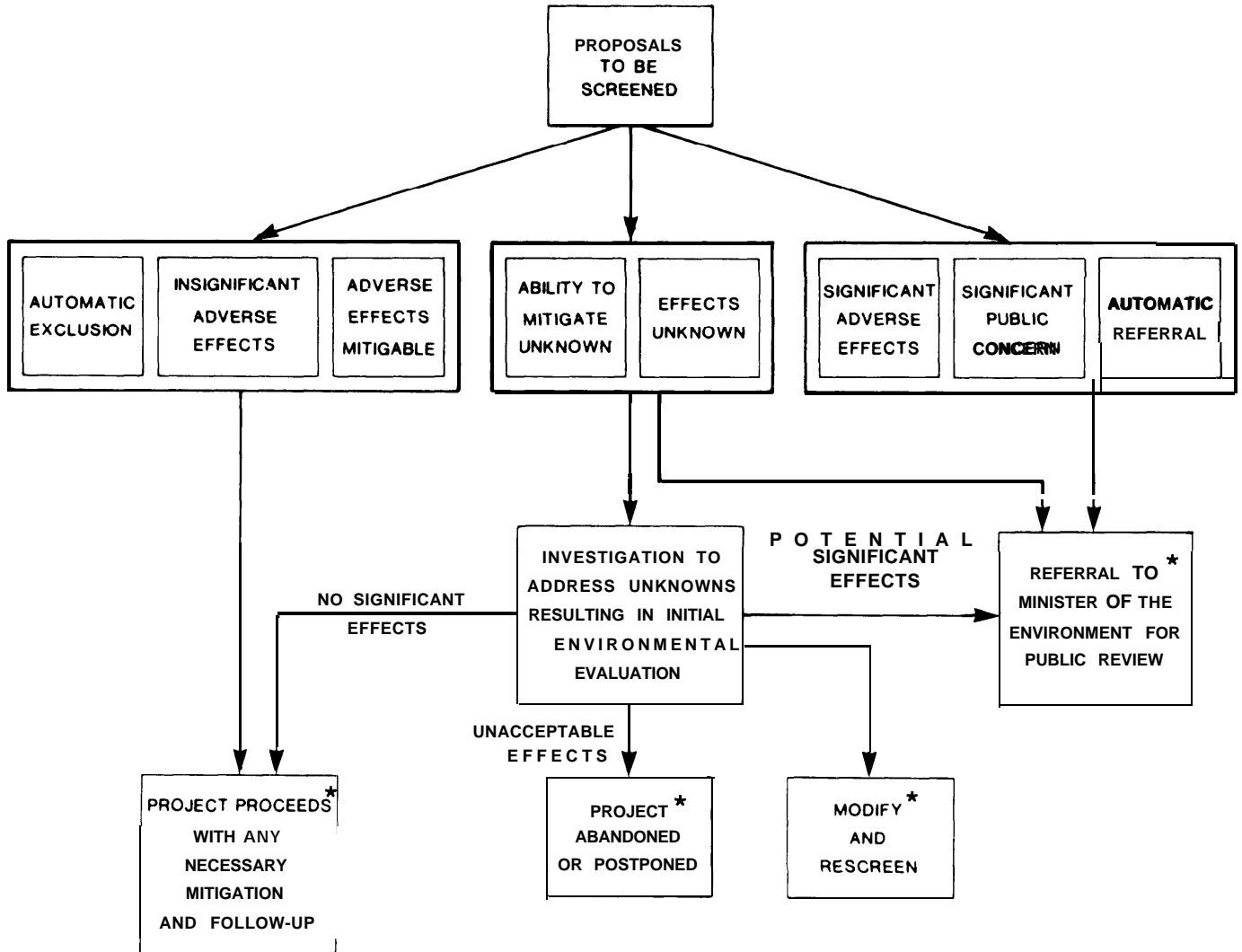
- might have an effect on federal Government responsibility;
- would require federal Government financial commitment;
- or,
- would be undertaken on lands administered by the federal Government, including those offshore.

Initial assessment starts with an environmental screening by a department to determine the potential environmental and directly related social effects of a proposal; that is, effects that could bring adverse changes to the natural environmental and effects that these changes could have on people. Screening may lead to additional study that results in a detailed document called an Initial Environmental Evaluation (IEE). This document is described in more detail on page 4 of the "Initial Assessment Guide" published by FEARO for departments to use during initial assessment. Its place in initial assessment can be seen in the diagram on page 4 of this Bulletin, which is taken from the Guide.

As a result of assessment, a department makes a decision about the environmental significance of a proposal. In this Bulletin each proposal listed has been assigned a number indicating what decision was taken. These decisions are described on page 5 in the section "How To Use This Bulletin." Eight decisions in that list are the same as those described on page 4 of the "Initial Assessment Guide." There are two additional numbers: 0 -to indicate that initial assessment of the proposal has started but no decision has been taken and 10 -to indicate that the proposal is to be carried out in another country under the auspices of the Canadian International Development Agency and although an environmental impact statement may be produced, there may be no public review by an independent panel.

Two of the decisions may be made immediately: automatic exclusion from study or automatic referral to the Minister of the Environment for a public review by an independent panel. Excluded proposals are those that would not produce any adverse environmental effects, such as routine maintenance. Automatic referrals are made for proposals that potentially could produce significant adverse environmental effects. Automatic exclusions or referrals are usually based on lists prepared by departments in co-operation with FEARO.

INITIAL ASSESSMENT



How to Use This Bulletin

The list in this bulletin consists of four columns of information:
LOCATION – PROPOSAL – DEPARTMENT – DECISION

Location

Locations are listed by province first and locality second, for example, ALTA.-Banff Park. Two other designations are used: offshore and international.

Provinces and territories are abbreviated as follows:

NFLD.	Newfoundland
N.B.	New Brunswick
QUE.	Quebec
MAN.	Manitoba
ALTA.	Alberta
Y.T.	Yukon Territory
P.E.I.	Prince Edward Island
N.S.	Nova Scotia
ONT.	Ontario
SASK.	Saskatchewan
B.C.	British Columbia
N.W.T.	Northwest Territories

Offshore designations are:

Gr. Banks	Grand Banks Offshore
	Labrador
Sct. Shelf	Scotian Shelf
H. Bay	Hudson Bay
B. Sea	Beaufort Sea
St. Lawrence	Gulf of St. Lawrence
Geo. Bank	Georges Bank
Arc. Is.	Arctic Islands
W. Coast	Offshore West Coast

The designation for proposals outside of Canada is Int. - International.

Proposal

Each proposal is described first from its largest to its smallest components in descending order, and second, by the action, for example, AIRPORT RUNWAY-EXTEND.

Department

Department means any department, board or agency and any parent corporation of the Government of Canada. Department names in this issue of the Bulletin are abbreviated as follows:

AECL	Atomic Energy of Canada Limited
COGLA	Canada Oil and Gas Lands Administration
EMR	Energy, Mines & Resources Canada
EC	Environment Canada

CIDA	Canadian International Development Agency
INAC	Indian and Northern Affairs Canada
ND	National Defence
NCC	National Capital Commission
RIE	Regional Industrial Expansion
TC	Transport Canada

Initial assessment decisions about proposals are listed as numbers and for the most part, are the same decisions as those listed on page 4 of the "Initial Assessment Guide". Number 0, however, is not a decision; rather, it indicates that the initial assessment of the proposal has begun and no decision has been made as yet. One of the outcomes of initial assessment may be an automatic exclusion of a proposal from study. Exclusions are not included in this Bulletin but information about them may be obtained from departments. Decisions designated as Number 10, indicating the proposal is to be implemented in another country through CIDA, are not in the Guide but are in this Bulletin.

Decisions

0 - initial assessment starting - no decision yet;

1 - automatically exclude proposal from study as a type that would not produce any adverse environmental effects, (NOT listed in this Bulletin);

2 - proceed with proposal because there are no significant adverse effects;

3 - proceed with proposal because the potentially adverse impacts may be mitigated with known technology;

4 - assess the proposal in greater detail (Initial Environmental Evaluation-IEE) because the adverse effects that might be caused by the proposal are unknown;

5 - give the proposal further study (IEE) because the ability to mitigate adverse effects is unknown;

6 - refer the proposal to the Minister of the Environment for a public review by a panel because the potential adverse impacts are significant;

7 - refer the proposal to the Minister of the Environment for a public review because public concern about it is such that a review is desirable;

8 - automatically refer the proposal to the Minister of the Environment for a public review as a type that potentially could produce significant environmental effects.

9 - either modify the proposal and rescreen it or abandon it because the impacts are unacceptable.

10 - production of an Environmental Impact Statement at request of the Canadian International Development Agency because potential adverse impacts are significant (CIDA)

To Obtain More Information on Any Proposal

The list of proposals is a summary meant to identify, in a few key words, proposals that have entered the process. It is not intended to provide a complete description nor be the sole source for information about such proposals. More detail about any proposal, as well as lists of automatic exclusions and automatic referrals, is retained by the department concerned. Requests for additional information -available in either official language- should be made to the appropriate departmental contact listed at the end of this bulletin.

FEARO staff are also available for advice. Write or telephone collect to:

13th Floor	700-789 West Pender St.
Fontaine Building	Vancouver, B.C.
Hull, Quebec	V6C 1H2
K1A OH3	

(819) 997-1000	(604) 666-243 1
----------------	-----------------

Publications Available From FEARO

- Environmental Assessment and Review Process Guidelines Order
- Initial Assessment Guide Federal Environmental Assessment and Review Process
- Environmental Assessment Panels: Procedures and Rules for Public Meetings
- Register of Panel Projects (including a list of Panel reports)

DEPARTMENTAL CONTACTS

For more information about the proposals in this bulletin or about proposals excluded from study, please contact the appropriate departmental representative listed.

Dr. Maurice Ruel
Director General
Environmental Protection Branch
Canada Oil & Gas Lands
Administration
Tower "B", 15th Floor, 355 River Road
Vanier, Ontario
K1A OE4
Tel: (613) 993-3760

Mr. Philip J. Paradine
Environmental Advisor
Natural Resources Division
Canadian International Development Agency
Place du Portage
Phase II, 7th Floor
Hull, Quebec
K1A OG4
Tel: (819) 997-6731

Dr. J. D. McTaggart-Cowan
Director
Office of Environmental Affairs
Department of Energy, Mines & Resources
580 Booth Street, 28th Floor, Rm 2030
Ottawa, Ontario
K1A 0E4
Tel: (613) 992-9924

Mr. R.H. Weir
Chief
Environmental Impact Systems Division
Environment Canada
Place Vincent Massey, 15th Floor
351 St. Joseph Blvd.
Hull, Quebec
K1A 1C8
Tel: (819) 997-1731

Mr. E.K. Langtry
A/ Director
Northern Environmental Protection Directorate
Northern Affairs Program
Department of Indian Affairs & Northern
Development
Terrasses de la Chaudiere
10 Wellington Street, North Tower, 6th Floor
Hull, Quebec
K1A OH4
Tel: (8 19) 997-9090

Mr. Glen Bloodworth
Director
Indian Environmental Protection Branch
Lands, Revenues and Trusts
Department of Indian Affairs & Northern
Development
Terrasses de la Chaudiere
10 Wellington Street, North Tower, Room 2037
Hull, Quebec
K1A OH4
Tel: (8 19) 997-8424

Mr. A.T. Downs, Director
Conservation & Environment
General Works
Department of National Defence
9th Floor, Centre Block North
101 Colonel By Drive
Ottawa, Ontario
K1A OK2
Tel: (613) 995-4154

Mr. S. Hamill
Chief, Conservation
Property Branch
National Capital Commission
161 Laurier Ave. W.
Ottawa, Ontario
K1P 6J6
Tel: (613) 992-4834

Mr. S.K. McNeely
Design Effectiveness
Program Affairs
Department of Regional
Industrial Expansion
8th Floor E.
235 Queen Street
Ottawa, Ontario
K1A 0H5

Tel: (613) 954-5557

Ms. Ann Johnstone, Senior Adviser
Planning and Co-ordination
Intergovernmental & industry Relations (DGCR/X)
Transport Canada
26A, Tower C, Place de Ville
330 Sparks Street
Ottawa, Ontario
K1A 0N5

Tel: (613) 995-1990

**INITIAL
ASSESSMENT
BULLETIN**

10/24/86

**INITIAL ASSESSMENT BULLETIN
FEDERAL ENVIRONMENTAL ASSESSMENT AND REVIEW PROCESS**

PAGE NO. 1

DOC. NO	LOCATION	PROPOSAL	DEPT	DEC
-----	-----	-----	-----	---
86-2-0341	ALTA. - COLD LAKE-CFB	INSECT/BRUSH- CONTROL	ND	2
86-2-0088	ALTA. - EDMONTON	RENOVATE ADMIN. BUILDING	TC	3
86-2-0090	ALTA. - MAYO	OVERLAY RUNWAY AND MODIFY TO ARCTIC "C"	TC	2
86-2-0091	ALTA. - VILLENEUVE	INSTALLATION OF BOUNDARY FENCE	TC	2
86-2-0340	ALTA. - WAINWRIGHT	INSECT/BRUSH- CONTROL	ND	2
86-2-0005	ARC. IS. - BENT HORN	OIL STORAGE AND SHIPPING - PHASE 2	COGLA	3
86-2-0004	B. SEA-AMULIGAK	EXTENDED FLOW TEST	COGLA	3
86-2-0071	B. C. - 9 LOCATIONS	BUILDING/ELECTRICAL ENERGY CONSERVATION	EMR	2
86-2-0074	B. C. - CHILLIWACK	RUNWAY EXTENSION	TC	4
86-2-0342	B. C. - CHILLIWACK-CFB	INSECT/BRUSH- CONTROL	ND	2
86-2-0092	B. C. - FORT ST. JOHN	SUPPLY AND INSTALL BOUNDARY FENCE	TC	2
86-2-0075	B. C. - FRASER LAKE	PAVE GRAVEL RUNWAY	TC	4
86-2-0272	B. C. - FRASER RIVER AT REDPASS	HYDROMETRIC STATION - UPGRADING	EC	3
86-2-0273	B. C. - HOMATHKO R. AT MOUTH	HYDROMETRIC STATION - RELOCATION	EC	3
86-2-0274	B. C. - KLINAKLINI R. EAST	HYDROMETRIC STATION - CABLEWAY INSTALLATION	EC	3
86-2-0076	B. C. - NAKUSP	RUNWAY EXTENSION	TC	4
86-2-0077	B. C. - PORT HARDY	DRAINAGE DITCH RESTORATION AND CONSTRUCTION	TC	2
86-2-0078	B. C. - PRINCE RUPERT	RECONSTRUCT WHARF	TC	2
86-2-0079	B. C. - VALEMDUNT	RELOCATE AIRPORT	TC	4
86-2-0080	B. C. - VANCOUVER	DRAINAGE FLOODBOXES PUMPING STATION	TC	3
86-2-0081	B. C. - VANCOUVER	DRAINAGE IMPROVEMENTS N. SEA ISLAND	TC	2
86-2-0082	B. C. - VANCOUVER	AIRFIELD DRAINAGE IMPROVEMENTS	TC	2
86-2-0083	B. C. - VANCOUVER	DRAINAGE REHAB. & REBUILD COWLEY CRES.	TC	2
86-2-0084	B. C. - VANCOUVER	REPLACE FLOODBOXES & PUMPING STATIONS II	TC	3
86-2-0085	B. C. - VANCOUVER	REALIGN WEST END OF MILLER ROAD	TC	2
86-2-0086	B. C. - VANCOUVER	RESTORATION OF SEAPLANE FACILITIES	TC	3
86-2-0087	B. C. - VANCOUVER	RELOCATE ROTARY WING AIRPORT	TC	4
86-2-0001	GEO. BANK	OFFSHORE EXPLORATORY DRILLING	COGLA	0
86-2-0020	INT. - BOTSWANA	TRANSMISSION LINE	CIDA	3
86-2-0016	INT. - CHINA	THREE GORGES WATER CONTROL	CIDA	10
86-2-0017	INT. - DOMINICA	COCONUT PLANTATION	CIDA	2
86-2-0018	INT. - GRENADA	COCOA PLANTATION	CIDA	2
86-2-0019	INT. - JAMAICA	HIGHWAY BRIDGE RECONSTRUCTION	CIDA	3
86-2-0155	MAN. - ARBORG	EXPAND DAIRY FACILITY	RIE	3

10/24/86

INITIAL ASSESSMENT BULLETIN
FEDERAL ENVIRONMENTAL ASSESSMENT AND REVIEW PROCESS

PAGE NO. 2

DOC. NO	LOCATION	PROPOSAL	DEPT	DEC
-----	-----	-----	-----	---
86-2-0094	MAN. - BRANDON	CONST. FIRE TRNG. SITE, MCKUP & PIPING	TC	3
86-2-0156	MAN. - BRANDON	ESTABLISH STEEL PLATE FABRICATING PLANT	RIE	3
86-2-0157	MAN. - CARBERRY	EXPAND FOOD PLANT	RIE	3
86-2-0095	MAN. - DAUPHIN	REHAB. TAXI "C"	TC	2
86-2-0148	MAN. - DAUPHIN	EXPAND PLASTIC PLANT	RIE	3
86-2-0150	MAN. - GIMLI	EXPAND PRINTING PLANT	RIE	3
86-2-0073	MAN. - PINAWA	SLOWPOKE DEMONSTRATION REACTOR	AECL	3
86-2-0151	MAN. - PORTAGE LA PRAIRIE	ESTABLISH SCRAP METAL PLANT	RIE	3
86-2-0343	MAN. - SHILO- CFB	INSECT/BRUSH- CONTROL	ND	2
86-2-0096	MAN. - THOMPSON	NORTH SIDE DEVELOPMENT	TC	2
86-2-0153	MAN. - TOUROUND	EXPAND AGRICULTURAL EQUIPMENT FACILITY	RIE	3
86-2-0152	MAN. - WINKLER	EXPAND FOUNDRY	RIE	3
86-2-0147	MAN. - WINNIPEG	MODERNIZE AND EXPAND PLASTIC PRODUCT FACTORY	RIE	3
86-2-0149	MAN. - WINNIPEG	MODERNIZE PRINTING PLANT	RIE	3
86-2-0154	MAN. - WINNIPEG	EXPAND FOOD PLANT	RIE	3
86-2-0158	MAN. - WINNIPEG	MODERNIZE AND EXPAND ENGINE FACILITY	RIE	3
86-2-0159	MAN. - WINNIPEG	EXPAND METAL FACILITY	RIE	3
86-2-0207	N. B. - BALDRAI	MODERNIZE SOFTWOOD SAWMILL	RIE	3
86-2-0211	N. B. - BLACK'S HARBOUR	REPLACE FISHMEAL MANUFACTURING PLANT	RIE	3
86-2-0210	N. B. - CAPE SPENCER	ESTABLISH GOLD PROCESSING FACILITY	RIE	3
86-2-0205	N. B. - CHATHAM	EXPAND AND MODERNIZE WAFERBOARD PLANT	RIE	3
86-2-0010	N. B. - DALHOUSIE	DREDGE- BERTH	TC	3
86-2-0202	N. B. - DEERDALE	MODERNIZE SAWMILL	RIE	3
86-2-0131	N. B. - MONTON	CLEARING APPROACHES ON VARIOUS AP SITES	TC	3
86-2-0214	N. B. - NELSON- MIRAMICHI	MODERNIZE PLYWOOD MANUFACTURING	RIE	3
86-2-0203	N. B. - NEWCASTLE	ESTABLISH COATED PAPER FACILITY	RIE	3
86-2-0314	N. B. - PALMERS CREEK	REMOVAL OF GAUGING STATION	EC	3
86-2-0215	N. B. - PETITCODIAC	MODERNIZE SOFTWOOD SAWMILL	RIE	3
86-2-0312	N. B. - PIKAHEGAN RIVER	CONSTRUCTION OF CABLEWAY	EC	3
86-2-0315	N. B. - SAINT JOHN R. AT GRAND FALLS	CONSTRUCTION OF GAUGING	EC	3
86-2-0313	N. B. - SALMON RIVER AT CASTAWAY	CONSTRUCTION OF CABLEWAY	EC	3
86-2-0206	N. B. - SHIPPAGAN	MODERNIZE CRAB MEAT PROCESSING	RIE	3
86-2-0208	N. B. - ST. GEORGE	R&D ON ACID LEACHING TECHNOLOGY	RIE	3
86-2-0212	N. B. - ST. QUENTIN	MODERNIZE SOFTWOOD SAWMILL	RIE	3

10/24/86

INITIAL ASSESSMENT BULLETIN
FEDERAL ENVIRONMENTAL ASSESSMENT AND REVIEW PROCESS

PAGE NO. 3

DOC. NO	LOCATION	PROPOSAL	DEPT	DEC
-----	-----	-----	-----	-----
86-2-0213	N. B. - ST. QUENTIN	ESTABLISH SAWMILL	RIE	3
86-2-0217	N. B. - ST. QUENTIN	MODERNIZE AND EXPAND LUMBER AND SHINGLE MILL	RIE	3
86-2-0204	N. B. - ST. STEPHEN	ESTABLISH FOUNDRY	RIE	3
86-2-0209	N. B. - SUSSEX	MODERNIZE AND EXPAND SOFTWOOD SAWMILL	RIE	3
86-2-0216	N. B. - WOODSTOCK	REBUILD SAWMILL	RIE	3
86-2-0348	N. S. - AMHERST	ESTABLISH MEAT PROCESSING PLANT	RIE	3
86-2-0319	N. S. - CANAAN RIVER AT CONNAUGHT LAKE	CONSTRUCTION OF GAUGING STATION	EC	3
86-2-0349	N. S. - KENTVILLE	ESTABLISH FRESH VEGETABLE PACKING	RIE	3
86-2-0318	N. S. - LAKE O' LAW BROOK AT EGYPT ROAD	RECONSTRUCTION OF GAUGING	EC	3
86-2-0320	N. S. - MIDDLE RIVER AT ROCKLIN	MAINTENANCE OF CONTROL IN RIVERBED	EC	3
86-2-0316	N. S. - N. E. MARGAREE R.	ERECTION OF CABLEWAY	EC	3
86-2-0321	N. S. - PEMBROKE RIVER AT GLENBERVIE	REMOVAL OF GRAVEL BAR AT INTAKE	EC	3
86-2-0350	N. S. - PICTOU	EXPAND LUMBER PROCESSOR	RIE	3
86-2-0345	N. S. - SALMON RIVER	EXPAND FISH PROCESSING	RIE	3
86-2-0347	N. S. - SALT SPRINGS	EXPAND SAWMILL	RIE	3
86-2-0002	N. S. - SCT. SHELF-TRENTON	MULTI-USER DOCK AND STORAGE AREA	COGLA	2
86-2-0317	N. S. - SHARPE BROOK AT LLOYDS	MAINTENANCE OF WEIR	EC	3
86-2-0132	N. S. - SYDNEY	INSTALL AIRPORT PERIMETER FENCING	TC	2
86-2-0346	N. S. - TRURO	EXPAND GRAIN PELLETIZING PLANT	RIE	3
86-2-0133	N. S. - YARMOUTH	INSTALL AIRPORT PERIMETER FENCE	TC	2
86-2-0097	N. W. T. - BAKER LAKE	UPGRADE AIRPORT ACCESS ROAD	TC	2
86-2-0098	N. W. T. - BAKER LAKE	NEW EQUIPMENT MCE. GARAGE	TC	2
86-2-0099	N. W. T. - BAKER LAKE	DYKING OF OIL TANKS AT HOUSES	TC	2
86-2-0100	N. W. T. - BAKER LAKE	CLEAN UP BAKER LAKE FUEL CONTAMINATION	TC	2
86-2-0337	N. W. T. - BREVOORT	NORTH WARNING SYSTEM CONSTRUCT	ND	2
86-2-0055	N. W. T. - BREVOORT ISLAND	DND - SITE RECONSTRUCTION	INAC	0
86-2-0056	N. W. T. - CAMBRIDGE BAY	WIND ENERGY CONVERSION PROJECT	EMR	3
86-2-0101	N. W. T. - CORAL HARBOUR	HEATING FUEL TANK FARM DYKING	TC	2
86-2-0063	N. W. T. - FORT SMTH	CENTRAL WOOD-FIRED BOILER HEATING	EMR	3
86-2-0089	N. W. T. - FORT SMTH	INSTALL BOUNDARY FENCE	TC	2
86-2-0066	N. W. T. - HALL BEACH	WIND ENERGY CONVERSION SYSTEM	EMR	5
86-2-0102	N. W. T. - HALL BEACH	MOBILE FUEL CONTAINMENT SYSTEM	TC	3
86-2-0065	N. W. T. - HAY RIVER	WASTE OIL-FIRED HEATING SYSTEM	EMR	5
86-2-0068	N. W. T. - HUDSON BAY	LOW-ENERGY SEISMIC SURVEY	EMR	3

10/24/86

INITIAL ASSESSMENT BULLETIN
FEDERAL ENVIRONMENTAL ASSESSMENT AND REVIEW PROCESS

PAGE NO. 4

DOC. NO	LOCATION	PROPOSAL	DEPT	DEC
-----	-----	-----	-----	---
86-Z-0006	N. W. T. - NORMAN WELLS	DREDGING-BERTH	TC	3
86-Z-0125	N. W. T. - PANGNIRTUNG	IMPROVEMENTS TO MANOEUVRING AREAS	TC	3
86-Z-0061	N. W. T. - RAE- EDZO	WOOD CONVERSION PROJECT	EMR	3
86-Z-0103	N.W.T.-RANKIN INLET	CRASH FIRE TRAINING AREA	TC	3
86-Z-0069	N.W.T.-WATSON LAKE	WATSON LAKE HEAT RECOVERY	EMR	2
86-2-0093	N. W. T. - YELLOWKNIFE	SUPPLY AND INSTALL BOUNDARY FENCE	TC	2
86-2-0014	NFLD. - ARGENTIA	CONTAMINATED WASTE DISPOSAL	TC	3
86-2-0256	NFLD. - BAY DE VERDE	MODERNIZE FISH PROCESSING	RIE	3
86-2-0254	NFLD. - BAY ROBERTS	ESTABLISH SLATE STONE PRODUCTION	RIE	3
86-2-0262	NFLD. - CLARENVILLE	EXPAND IMITATION CRAB PROCESSING	RIE	3
86-2-0270	NFLD. - CLARENVILLE	ESTABLISH FISH PROCESSOR	RIE	3
86-2-0244	NFLD. - CORNER BROOK	MODERNIZE PULP AND PAPER MILL	RIE	3
86-2-0246	NFLD. - CORNER BROOK	EXPAND & MODERNIZE FISH PROCESSING PLANT	RIE	3
86-2-0260	NFLD. - CORNER BROOK	MODERNIZE AND EXPAND CEMENT PLANT	RIE	3
86-2-0263	NFLD. - CORNER BROOK	EXPAND EGG AND MLK PROCESSING	RIE	3
86-2-0135	NFLD. - DEER LAKE	CONSTRUCT 354 m2 STORAGE BUILDING	TC	2
86-2-0257	NFLD. - FOXTRAP	ESTABLISH ABATTOIR	RIE	3
86-2-0245	NFLD. - GRAND FALLS	MODERNIZE PAPER MACHINES	RIE	3
86-2-0326	NFLD. - HARRY'S RIVER	MAINTENANCE OF CABLEWAY	EC	3
86-2-0332	NFLD. - HOLYROOD	RELOCATE WEATHER RADAR FROM TREPASSEY	EC	4
86-2-0252	NFLD. - HOPE BROOK	ESTABLISH GOLD PROCESSING	RIE	3
86-2-0327	NFLD. - ISLE AUX MORTS RIVER	MAINTENANCE OF GAUGING STATION AND CABLEWAY	EC	3
86-2-0305	NFLD. - LAB.	WATER TREATMENT PLANT	EC	1
86-2-0306	NFLD. - LAB.	TRANSMISSION MAIN	EC	3
86-2-0307	NFLD. - LAB.	ROAD REPAIR	EC	3
86-2-0308	NFLD. - LAB.	AUXILIARY WATER SUPPLY	EC	3
86-2-0309	NFLD. - LAB.	SOLID WASTE SITE	EC	3
86-2-0310	NFLD. - LAB.	CLEAN WATER DISTRIBUTION SYSTEM	EC	3
86-2-0311	NFLD. - LAB.	REFURBISH NO. 1 DAMS AND CLEAN	EC	1
86-2-0253	NFLD. - LABRADOR CITY	ESTABLISH URETHANE PRODUCTION	RIE	3
86-2-0338	NFLD. - LABRADOR- CARTWRIGHT	NORTH WARNING SYSTEM CONSTRUCT	ND	2
86-2-0339	NFLD. - LABRADOR- SAGLEK	NORTH WARNING SYSTEM CONSTRUCT	ND	2
86-2-0267	NFLD. - LEECH BROOK	ESTABLISH TRAILER PARK AND WATER SLIDE	RIE	3
86-2-0331	NFLD. - LITTLE BARASEWAY BROOK	CONSTRUCTION OF NEW GAUGING STATION	EC	3

10/24/86

INITIAL ASSESSMENT BULLETIN
FEDERAL ENVIRONMENTAL ASSESSMENT AND REVIEW PROCESS

PAGE NO. 5

DOC. NO	LOCATION	PROPOSAL	DEPT	DEC
86-Z-0268	NFLD. - MAIN BROOK	ESTABLISH SAWMILL	RIE	3
86-Z-0070	NFLD. - MARY'S HARBOUR	MINI-HYDRO DEVELOPMENT	EMR	3
86-Z-0329	NFLD. - MIDDLE ARM BROOK	CONSTRUCTION OF NEW GAUGING STATION AND CABLEWAY	EC	3
86-Z-0324	NFLD. - MINUPI RIVER	CONSTRUCTION OF SHELTER	EC	3
86-Z-0264	NFLD. - MOUNT PEARL	ESTABLISH PLASTIC FILM EXTRUSION	RIE	3
86-Z-0323	NFLD. - PIPERS HOLE RIVER	RECONSTRUCTION OF CABLEWAY	EC	3
86-Z-0249	NFLD. - PLACENTIA BAY	ESTABLISH CAR SHREDDING PLANT	RIE	3
86-Z-0266	NFLD. - PLACENTIA BAY	ESTABLISH PLANT	RIE	3
86-Z-0255	NFLD. - PORTLAND CREEK	ESTABLISH HUNTING AND FISHING LODGE	RIE	3
86-Z-0015	NFLD. - POSTVILLE	CONST. NEW WHARF	TC	2
86-Z-0330	NFLD. - S.W GANDER RIVER	CONSTRUCTION OF NEW GAUGING STATION AND CABLEWAY	EC	3
86-Z-0250	NFLD. - SALMONIER LINE	ESTABLISH TOURIST RESORT	RIE	3
86-Z-0261	NFLD. - SANDY COVE	ESTABLISH MEAT PROCESSOR	RIE	3
86-Z-0258	NFLD. - SPRINGDALE	ESTABLISH STUD MILL	RIE	3
86-Z-0259	NFLD. - ST. JOHN'S	EXPAND FOOD PROCESSOR	RIE	3
86-Z-0271	NFLD. - ST. JOHN'S	ESTABLISH FISH PROCESSOR	RIE	3
86-Z-0243	NFLD. - ST. LAWRENCE	ESTABLISH FLUORSPAR MILL	RIE	3
86-Z-0248	NFLD. - ST. MARY'S BAY	MODERNIZE PROCESSING OPERATIONS	RIE	3
86-Z-0328	NFLD. - STAR LAKE RIVER	CONSTRUCTION OF NEW GAUGING STATION AND CABLEWAY	EC	3
86-z-0325	NFLD. - STE. GENEVIEVE RIVER	MAINTENANCE OF CABLEWAY	EC	3
86-Z-0012	NFLD. - STEPHENVILLE	BREAKWATER - CONST. NEW AND REPAIR OLD	TC	2
86-Z-0269	NFLD. - STEPHENVILLE	ESTABLISH FOOD PROCESSOR	RIE	3
86-Z-0013	NFLD. - TERRENCEVILLE	DREDGE-BERTH	TC	2
86-Z-0265	NFLD. - TRINITY	EXPAND BRICK PLANT	RIE	3
86-Z-0251	NFLD. - TRINITY BAY	MODERNIZE AND EXPAND SEAFOOD PROCESSOR	RIE	3
86-Z-0134	NFLD. - WABUSH	INSTALL PERIMETER FENCE	TC	2
86-Z-0247	NFLD. - WHITE BAY	ESTABLISH SEAL PELTS PROCESSOR	RIE	3
86-Z-0058	ONT. - (6 COMMUNITIES)	LOW ENERGY HOUSING DEMONSTRATION	EMR	2
86-Z-0285	ONT. - 6 STATIONS	GAUGING STATION - CONSTRUCTION	EC	3
86-Z-0283	ONT. - ANCASTER CREEK- ANCASTER	GAUGING STATION - CONSTRUCTION	EC	3
86-Z-0062	ONT. - ATTAWAPISKAT	HOUSING RETROFIT DEMONSTRATION	EMR	2
86-Z-0297	ONT. - BAYFIELD RIVER- VARNA	GAUGING STATION - MODIFICATIONS	EC	3
86-Z-0278	ONT. - BEAVER CREEK- MARMORA	GAUGING STATION - CONSTRUCTION	EC	3
86-Z-0298	ONT. - BONNECHERE RIVER- CASTLEFORD	GAUGING STATION - MODIFICATIONS	EC	3

10/24/86

INITIAL ASSESSMENT BULLETIN
FEDERAL ENVIRONMENTAL ASSESSMENT AND REVIEW PROCESS

PAGE NO. 6

DOC. NO	LOCATION	PROPOSAL	DEPT	DEC
86-2-0344	ONT. - BORDEN- CFB	INSECT/BRUSH- CONTROL	ND	2
86-2-0284	ONT. - BRONTE CREEK- CARLYSLE	GAUGING STATION - CONSTRUCTION	EC	3
86-2-0296	ONT. - CHIPPEWA CREEK- NORTH BAY	GAUGING STATION - MODIFICATIONS	EC	3
86-2-0009	ONT. - COLLINGWOOD	DREDGE- HARBOUR	TC	3
86-2-0294	ONT. - COMMANDA CREEK- COMMANDA	GAUGING STATION - MODIFICATIONS	EC	3
86-2-0281	ONT. - CURRENT RIVER- STEPSTONE	GAUGING STATION - CONSTRUCTION	EC	3
86-2-0292	ONT. - DETROIT RIVER- LASALLE	GAUGING STATION - MODIFICATIONS	EC	3
86-2-0291	ONT. - DETROIT RIVER- TECUMSEH	GAUGING STATION - MODIFICATIONS	EC	3
86-2-0288	ONT. - KEMPTVILLE CREEK- KEMPTVILLE	GAUGING STATION - MODIFICATIONS	EC	3
86-2-0104	ONT. - KENORA	EXPAND APRON 1	TC	2
86-2-0293	ONT. - KETTLE CREEK- ST. THOMAS	GAUGING STATION - MODIFICATIONS	EC	3
86-2-0008	ONT. - KINGSVILLE	DREDGING- APPROACH CHANNEL	TC	3
86-2-0282	ONT. - LITTLE RIVER- WINDSOR	GAUGING STATION - CONSTRUCTION	EC	3
86-2-0286	ONT. - MATTAGM RIVER, TIMMINS	GAUGING STATION - MODIFICATIONS	EC	3
86-2-0277	ONT. - MCINTYRE RIVER- THUNDER BAY	GAUGING STATION - CONSTRUCTION	EC	3
86-2-0290	ONT. - N. W GANARASKA RIVER- OSACA	GAUGING STATION - MODIFICATIONS	EC	3
86-2-0021	ONT. - OTTAWA	MILE CIRCLE - CONSTRUCTION OF EMBASSIES	NCC	0
86-2-0022	ONT. - OTTAWA	WESTERN SEWER - INSTALLATION	NCC	3
86-2-0023	ONT. - OTTAWA	TENNIS CLUB - ADD COVERING STRUCTURE	NCC	2
86-2-0024	ONT. - OTTAWA	EASTERN PARKWAY - EXTENSION	NCC	3
86-2-0025	ONT. - OTTAWA	BNR RESEARCH FACILITY - EXPANSION	NCC	9
86-2-0026	ONT. - OTTAWA	AIRPORT PARKWAY - TWINNING	NCC	3
86-2-0027	ONT. - OTTAWA	GAS PIPELINE - INSTALLATION	NCC	0
86-2-0028	ONT. - OTTAWA	LYNWOOD COLLECTOR SEWER - INSTALLATION	NCC	3
86-2-0029	ONT. - OTTAWA	QUEENSWAY- CARLETON HOSPITAL - EXPANSION	NCC	4
86-2-0030	ONT. - OTTAWA	EASTERN DRIVEWAY - INTERSECTION REALIGNMENT	NCC	2
86-2-0031	ONT. - OTTAWA	EASTERN DRIVEWAY - ROUTE THROUGH WOODS	NCC	9
86-2-0032	ONT. - OTTAWA	EASTERN SEWER - INSTALLATION	NCC	3
86-2-0033	ONT. - OTTAWA	EASTERN TRANSITWAY - STORM WATER MANAGEMENT	NCC	2
86-2-0034	ONT. - OTTAWA	CAR BODY SHOP - LAND PURCHASE REQUEST	NCC	9
86-2-0035	ONT. - OTTAWA	QUARRY - LAND EASEMENT REQUEST FOR QUARRYING	NCC	0
86-2-0036	ONT. - OTTAWA	CREEK DIVERSION - D. AUBREY MOODIE SCHOOL	NCC	9
86-2-0037	ONT. - OTTAWA	PAVING OF ACCESS LANEWAY - 9TH LINE	NCC	2
86-2-0109	ONT. - OTTAWA	STORMWATER DRAINAGE IMPROVEMENTS	TC	3

✓

10/24/86

INITIAL ASSESSMENT BULLETIN
FEDERAL ENVIRONMENTAL ASSESSMENT AND REVIEW PROCESS

PAGE NO. 7

DOC. NO	LOCATION	PROPOSAL	DEPT	DEC
-----	-----	-----	-----	---
86-Z-0110	ONT. - OTTAWA	GLOUCESTER LANDFILL WASTE SITE CLEAN UP	TC	5
86-Z-0007	ONT. - OWEN SOUND	DREDGING-HARBOUR 81 APPROACH	TC	3
86-Z-0280	ONT. - PARKS CREEK-NORTH BAY	GAUGING STATION - CONSTRUCTION	EC	3
86-2-0072	ONT. - PORT HOPE	LOW-LEVEL RADIOACTIVE WASTE DISPOSAL	EMR	6
86-2-0279	ONT. - SAUBLE RIVER-SAUBLE FALLS	GAUGING STATION - CONSTRUCTION	EC	3
86-2-0336	ONT. - SERPENT RIVER	WASTE DISPOSAL-SITE REHAB	INAC	4
86-2-0335	ONT. - SHOAL LAKE	COTTAGE DEVELOPMENT	INAC	6
86-2-0295	ONT. - ST. MARY'S R. - SAULT STE. MARIE	GAUGING STATION - MODIFICATIONS	EC	3
86-2-0105	ONT. - THUNDER BAY	APRON 1A EXPANSION	TC	2
86-2-0115	ONT. - TIMMINS	UPGRADE, RELOCATE FIRE TRNG. AREA	TC	3
86-2-0111	ONT. - TORONTO	GEN. AV. SERVICE ROAD MDS.	TC	2
86-2-0112	ONT. - TORONTO	INFRASTRUCTURE TO SUPPORT TERMINAL 3	TC	4
86-2-0113	ONT. - TORONTO	CONST./FILLET RWY 33/HOTEL TAXI	TC	2
86-2-0114	ONT. - TORONTO	CONSTRUCT PERIMETER ROAD	TC	3
86-2-0287	ONT. - WHITEMAN'S CREEK-MT. VERNON	GAUGING STATION - MODIFICATIONS	EC	3
86-2-0289	ONT. - WHITSON RIVER-VAL CARON	GAUGING STATION - MODIFICATIONS	EC	3
86-2-0275	ONT. - WYE RIVER-WEBRIDGE	GAUGING STATION - CONSTRUCTION	EC	3
86-2-0064	P. E. I. - (30) LOCATIONS	WOOD/BIOMASS CONVERSION PROGRAM	EMR	3
86-2-0228	P. E. I. - ALBERTON	EXPAND BOATBUILDER	RIE	3
86-2-0226	P. E. I. - CARDIGAN	EXPAND FEED MILL	RIE	3
86-2-0136	P. E. I. - CHARLOTTETOWN	UPGRADE FIRE TRAINING AREA	TC	4
86-2-0218	P. E. I. - CHARLOTTETOWN	EXPAND MEDICAL DEVICES MANUFACTURING	RIE	3
86-2-0220	P. E. I. - CHARLOTTETOWN	EXPAND FIBERGLASS PRODUCTION	RIE	3
86-2-0221	P. E. I. - CHARLOTTETOWN	ESTABLISH FISH VACCINE MANUFACTURE	RIE	3
86-2-0224	P. E. I. - CHARLOTTETOWN	EXPAND FORMED CONCRETE PLANT	RIE	3
86-2-0235	P. E. I. - CHARLOTTETOWN	EXPAND SOFTDRINK BOTTLER	RIE	3
86-2-0239	P. E. I. - CHARLOTTETOWN	R&D NEW EYEGLOSS FRAMES	RIE	3
86-2-0230	P. E. I. - DESABLE	EXPAND SEAFOOD PROCESSOR	RIE	3
86-2-0322	P. E. I. - EMERALD BROOK	MAINTENANCE OF WEIR	EC	3
86-2-0240	P. E. I. - FORTUNE	EXPAND POTATO PROCESSOR	RIE	3
86-2-0238	P. E. I. - GREENWICH	EXPAND SEAFOOD PROCESSOR	RIE	3
86-2-0229	P. E. I. - MILTON	ESTABLISH BREWERY	RIE	3
86-2-0234	P. E. I. - MONT CARMEL	ESTABLISH POTATO CHIP PRODUCER	RIE	3
86-2-0231	P. E. I. - MORELL	EXPAND POTATO PROCESSOR	RIE	3

10/24/86

**INITIAL ASSESSMENT BULLETIN
FEDERAL ENVIRONMENTAL ASSESSMENT AND REVIEW PROCESS**

PAGE NO. 8

DOC. NO	LOCATION	PROPOSAL	DEPT - s - e -	DEC - - -
86-2-0233	P. E. I. - MURRAY HARBOUR	EXPAND SEAFOOD PROCESSOR	RIE	3
86-2-0222	P. E. I. - MURRAY RIVER	EXPAND SEAFOOD PROCESSING	RIE	3
86-2-0223	P. E. I. - SOURIS	EXPAND ANIMAL FEED MANUFACTURE	RIE	3
86-2-0236	P. E. I. - SOURIS	MODERNIZE POTATO PROCESSOR	RIE	3
86-2-0241	P. E. I. - SOURIS	MODERNIZE SEAFOOD PROCESSOR	RIE	3
86-2-0219	P. E. I. - SUMMERSIDE	MODERNIZE DAIRY	RIE	3
86-2-0225	P. E. I. - SUMMERSIDE	MODERNIZE POTATO PROCESSOR	RIE	3
86-2-0227	P. E. I. - SUMMERSIDE	R&D FOR NEW FIRE RETARDANT PROCESS	RIE	3
86-2-0232	P. E. I. - SUMMERSIDE	ESTABLISH FIBERGLASS PROD.	RIE	3
86-2-0237	P. E. I. - SUMMERSIDE	ESTABLISH SEAFOOD PROCESSOR	RIE	3
86-2-0242	P. E. I. - SUMMERSIDE	EXPAND PRINTER	RIE	3
86-2-0180	QUE. - AMDS	MODERNIZE SAWMILL	RIE	3
86-2-0045	QUE. - AYLMEY	VOYAGEUR PARKWAY-BICYCLE PATH	NCC	3
86-2-0198	QUE. - BAIE D'URFE	TOXIC CHEMICAL PRODUCTS	RIE	6
86-2-0169	QUE. - BEDFORD	EXPAND FROZEN FOOD PLANT	RIE	3
86-2-0176	QUE. - BELLECHASSE- ST- DAMEN	EXPAND PLASTICS INJECTING	RIE	3
86-2-0191	QUE. - BIENCOURT	RECONSTRUCT SAWMILL	RIE	3
86-2-0161	QUE. - BOUCHERVILLE	EXPAND JEWELRY MANUFACTURE	RIE	3
86-2-0276	QUE. - CATFISH CREEK- AYLMEY	GAUGING STATION - CONSTRUCTION	EC	3
86-2-0179	QUE. - CHAMPNEUF	MODERNIZE LUMBER AND WOOD CHIPS	RIE	3
86-2-0181	QUE. - CHAPAIS	MODERNIZE CUTTING OPERATIONS	RIE	3
86-2-0116	QUE. - CHEVERY	INSTALL SECURITY FENCE	TC	3
86-2-0117	QUE. - DORVAL	DEVELOP REGIONAL OFFICE SITE	TC	2
86-2-0118	QUE. - DORVAL	REPAIRS TO MUNICIPAL SERVICES PHASE 1	TC	2
86-2-0184	QUE. - EAST HEREFORD	EXPAND SAWMILL	RIE	3
86-2-0119	QUE. - FROBISHER	RESTORE FUELLING STATION	TC	3
86-2-0038	QUE. - GATINEAU PARK	MULVIHILL LAKE-WHARF CONSTRUCTION	NCC	3
86-2-0039	QUE. - GATINEAU PARK	LAC PHILIPPE CAMPGROUND-WATER FILTRATION PLANT	NCC	3
86-2-0040	QUE. - GATINEAU PARK	OLD CHELSEA - CITY HALL CONSTRUCTION	NCC	0
86-2-0041	QUE. - GATINEAU PARK	MACKENZIE KING ESTATE DEVELOPMENT PROJECT	NCC	3
86-2-0042	QUE. - GATINEAU PARK	CAMP GATINEAU - BEACH DEVELOPMENT	NCC	9
86-2-0011	QUE. - HAVRE AUBERT	SHED - PILES REINFORCED	TC	2
86-2-0043	QUE. - HULL	JACQUES-CARTIER PARK MARINA	NCC	4
86-2-0044	QUE. - HULL	ST. RAYMOND/MOUNTAIN ROAD SURVEYS	NCC	0

10/24/86

INITIAL ASSESSMENT BULLETIN
FEDERAL ENVIRONMENTAL ASSESSMENT AND REVIEW PROCESS

PAGE NO. 9

DOC. NO	LOCATION	PROPOSAL	DEPT	DEC
86-Z-0197	QUE. - IBERVILLE	PRODUCTION OF SPECIALIZED CHEMICAL PRODUCTS	RIE	6
86-Z-0120	QUE. - INUKJUAQ	DEVELOP AIRPORT	TC	4
86-2-0057	QUE. - KUJJJUAQ	WIND ENERGY CONVERSION PROJECT	EMR	3
86-2-0121	QUE. - KUJJJUAQ	FIRE TRAINING AREA	TC	3
86-2-0333	QUE. - KUJJJUAQ	RELOCATE AEROLOGICAL STATION	EC	0
86-2-0187	QUE. - LA TUQUE	EXPAND STICK MANUFACTURE	RIE	3
86-2-0188	QUE. - LAC BOUCHETTE	NEW SAWMILL	RIE	3
86-2-0162	QUE. - LAVAL	EXPAND COSMETIC AND PERFUME PLANT	RIE	3
86-2-0304	QUE. - LAVALTRIE	DREDGING NEAR TIDAL STATION	EC	1
86-2-0174	QUE. - MALARTIC	MODERNIZE SAWMILL	RIE	3
86-2-0122	QUE. - MIRABEL	REMOVAL OF ZONING OBSTACLES	TC	3
86-2-0123	QUE. - MIRABEL	REPLACE FIRE TRAINING AREA MOCK-UP	TC	3
86-2-0168	QUE. - MONT ST-GREGOIRE	MODERNIZE AND EXPAND SLAUGHTER-HOUSE	RIE	3
86-2-0172	QUE. - MONT-LAURIER	ESTABLISH FIBER PANELS PRODUCTION	RIE	3
86-2-0194	QUE. - MONTREAL	ESTABLISH ZINC PLATING LINE	RIE	3
86-2-0164	QUE. - NAPIERVILLE	EXPAND AND MODERNIZE NAPHTHALINE PLANT	RIE	3
86-2-0124	QUE. - NATASHQUAN	LEVEL AND STABILIZE SHOULDERS	TC	3
86-2-0183	QUE. - PARENT	MODERNIZE SAWMILL	RIE	3
86-2-0193	QUE. - POINTE-CLAIRE	EXPAND WOOD DRYING	RIE	3
86-2-0196	QUE. - PORT-CARTIER	CONCENTRATION OF IRON OXIDES	RIE	3
86-2-0126	QUE. - QUEBEC	STABILIZE RUNWAY 6-24 SHOULDERS	TC	3
86-2-0167	QUE. - QUEBEC	EXPAND TANNING AND DYING	RIE	3
86-2-0303	QUE. - R. DES PRAIRIES A CARTIERVILLE	HYDROMETRIC STATION CONSTRUCTION	EC	3
86-2-0300	QUE. - R. RICHELIEU AUX RAPIDES FRYERS	HYDROMETRIC STN INSTALLATION OF UNDERGROUND PIPES	EC	3
86-2-0302	QUE. - RIVIERE DU CHESNE	HYDROMETRIC STN MOVEMENT ABANDONED BRIDGE SUPPORTS	EC	3
86-2-0299	QUE. - SAINTE-MARIE-CHAUDIERE RIVER	FLOOD PROTECTION	EC	1
86-2-0178	QUE. - SENNETERRE	MODERNIZE SAWMILL	RIE	3
86-2-0127	QUE. - SEPT ILES	MOCK-UP FOR FIRE TRAINING AREA	TC	4
86-2-0128	QUE. - SEPT ILES	REPAIRS/IMPROVEMENTS TO DRAINAGE SYSTEM	TC	8
86-2-0189	QUE. - ST-ALPHONSE	NEW SAWMILL	RIE	3
86-2-0165	QUE. - ST-ANSELME	MODERNIZE ANIMAL FEED PLANT	RIE	3
86-2-0166	QUE. - ST-DOMINIQUE	EXPAND SLAUGHTER-HOUSE	RIE	3
86-2-0186	QUE. - ST-GABRIEL	EXPAND SAWMILL	RIE	3
86-2-0163	QUE. - ST-HYACINTHE	EXPAND FOUNDRY	RIE	3

10/24/86

INITIAL ASSESSMENT BULLETIN
FEDERAL ENVIRONMENTAL ASSESSMENT AND REVIEW PROCESS

PAGE NO. 10

DOC. NO	LOCATION	PROPOSAL	DEPT	DEC
-----	-----	-----	-----	---
86-2-0130	QUE. - ST- JEAN	RUNWAY EXTENSION	TC	4
86-2-0200	QUE. - ST- JEROME	UREA FORMOL BISON XL-300 GLUE	RIE	3
76-2-0192	QUE. - ST- JOVITE	EXPAND MELAMINE PANEL PRODUCTION	RIE	3
86-2-0160	QUE. - ST- LAURENT	EXPAND INK MANUFACTURE	RIE	3
86-2-0177	QUE. - ST- LEONARD	EXPAND CHEESE DAIRY	RIE	3
86-2-0190	QUE. - ST- MICHEL- DES- SAINTS	EXPAND DRYING AND PLANING FACILITIES	RIE	
86-2-0201	QUE. - ST- SEBASTIEN	SAWMILL WATER	RIE	3
86-2-0185	QUE. - ST- SEVERIN- DE- PROULXVILLE	EXPAND SAWMILL	RIE	3
86-2-0301	QUE. - ST. LAWRENCE R. - MERCIER BRIDGE	HYDROMETRIC STN INSTALLATION OF SHELTERED VENT	EC	3
86-2-0129	QUE. - TASIUJAC	DEVELOP AIRPORT	TC	4
86-2-0182	QUE. - TEE LAKE	INCREASE DRYING CAPACITIES	RIE	3
86-2-0173	QUE. - TEMISCAMING	MODERNIZE BLEACHING PROCESS	RIE	3
86-2-0170	QUE. - TROIS- RIVIERES	EXPAND GROUNDWOOD SPECIALTIES	RIE	3
86-2-0171	QUE. - TROIS- RIVIERES	MODERNIZE PAPER PLANT	RIE	3
86-2-0334	QUE. - TUQANGAJUK	SETTLEMENT- CONSTRUCTION	INAC	0
86-2-0175	QUE. - VAL D' OR	MODERNIZE SAWMILL	RIE	3
86-2-0195	QUE. - VAUDREUIL	PURIFICATION OF ACIDS AND PLATING SALTS	RIE	3
86-2-0060	QUE. - WASKAGANISH	ENERGY EFFICIENT NATIVE TRAPPER'S HOUSE	EMR	2
86-2-0199	QUE. - WATERVILLE	NICKEL PLATING OPERATION	RIE	3
86-2-0059	QUE. - WEYMONTACHIE	ENERGY EFFICIENT HOUSING RETROFITS	EMR	2
86-2-0137	SASK. - DUNDURN	ESTABLISH MANUFACTURER OF OILFIELD STORAGE TANKS	RIE	3
86-2-0143	SASK. - ESTEVAN	NEW MEAT PRODUCTS PLANT	IRE	3
86-2-0142	SASK. - GIRVIN	NEW PLANT FOR ORGANIC PRODUCTS	RIE	3
86-2-0146	SASK. - HEPBURN	NEW SEED AND GRAIN CLEANING FACILITY	RIE	3
86-2-0138	SASK. - HUDSON BAY	ESTABLISH BENEFICATION OF SILICA SAND	RIE	3
86-2-0106	SASK. - LAC LA RONGE	COMMERCIAL DEV. AREA B	TC	2
86-2-0107	SASK. - LAC LA RONGE	BOUNDARY FENCE	TC	2
86-2-0140	SASK. - LOON LAKE	NEW ABATTOIR AND MEAT PROCESSING PLANT	RIE	3
86-2-0145	SASK. - MELFORT	EXPAND MEAT PRODUCTS PLANT	RIE	3
86-2-0108	SASK. - NORTH BATTLEFORD	REHAB. TAXIWAYS B&C	TC	2
86-2-0141	SASK. - REGINA	NEW SHOPPING CART PLANT	RIE	3
86-2-0139	SASK. - SASKATOON	FARM MACHINERY PLANT ADDITION OF PAINT LINE	RIE	3
86-2-0144	SASK. - SASKATOON	MODERNIZE FLOUR MILL	RIE	3
86-2-0067	SASK. - SOUTHEND	R-2000 RECREATION FACILITY	EMR	3

10/24/86

**INITIAL ASSESSMENT BULLETIN
FEDERAL ENVIRONMENTAL ASSESSMENT AND REVIEW PROCESS**

PAGE NO.11

DOC. NO	LOCATION	PROPOSAL	DEPT	DEC
-----	-----	-----	-----	a -
86-2-0003	SCT. SHELF	GEDORO-PLACER EXPLORATION PROGRAM	COGLA	1
86-2-0050	Y. T. - B. C. - HAINES JCT-ALASKA	PUMP STATIONS - SALVAGE	INAC	3
86-2-0051	Y. T. - B. C. - HAINES JCT-ALASKA	PIPELINE - SALVAGE	I NAC	0
86-2-0048	Y. T. - CARCROSS-SKAGWAY	HW, EXISTING - UPGRADE	I NAC	0
86-2-0049	Y. T. - DAWSON RANGE	ACCESS - NEW	INAC	3
86-2-0046	Y. T. - KETZA RIVER	ACCESS, EXISTING - UPGRADE	INAC	3
86-2-0047	Y. T. - KETZA RIVER	MINE AND TAILINGS POND	INAC	0
86-2-0053	Y. T. - NORTH YUKON	NORTH WARNING SYSTEM	INAC	0
86-2-0052	Y. T. - VERNECKE MNS	ACCESS-NEW	INAC	4
86-2-0054	Y. T. - WHITEHORSE	COAL MINE	INAC	0