

**BULLETIN  
OF  
INITIAL ASSESSMENT DECISIONS**

**UNDER  
THE FEDERAL ENVIRONMENTAL ASSESSMENT AND REVIEW PROCESS**

EDITION 2

September 1, 1986 - December 31, 1986

© Minister of Supply and Services Canada 1987

Cat. No. En 104-6/2

ISBN 0-662-5521 4-8

## **INTRODUCTION**

Initial assessment is part of the federal Environmental Assessment and Review Process (EARP) which is used to implement Government policy on environmental assessment. Initial assessment helps determine the potential environmental and directly related social implications of proposals for which the government has a decision-making responsibility. This Bulletin contains summaries of decisions about proposals made as a result of initial assessment.

EARP is to be used early in planning before irrevocable decisions or actions are taken. Guidelines on this policy were issued by Order in Council June 21, 1984.

This Guidelines Order applies to all federal departments, boards, agencies. Parent corporations are expected to make this part of their corporate policy unless this is not possible within the legislative authority of the corporation. The Order also applies to agencies that deal with regulation of certain activities unless this would cause a duplication of procedures or legislation does not permit their decisions to be based on environmental factors. In this publication all these are referred to as departments.

EARP consists of two possible phases: initial assessment and public review. This Bulletin deals with the decisions arising from the first phase. It is published quarterly by the Federal Environmental Assessment Review Office (FEARO) and is supplementary to the "Initial Assessment Guide" to EARP (also published by FEARO) that provides federal departments with procedural guidelines for the initial environmental assessment of proposals.

## INITIAL ASSESSMENT

Initial assessment is used when a department intends to undertake any proposal of its own. It is also used when a department has the authority to make a decision about a proposal of another organization that:

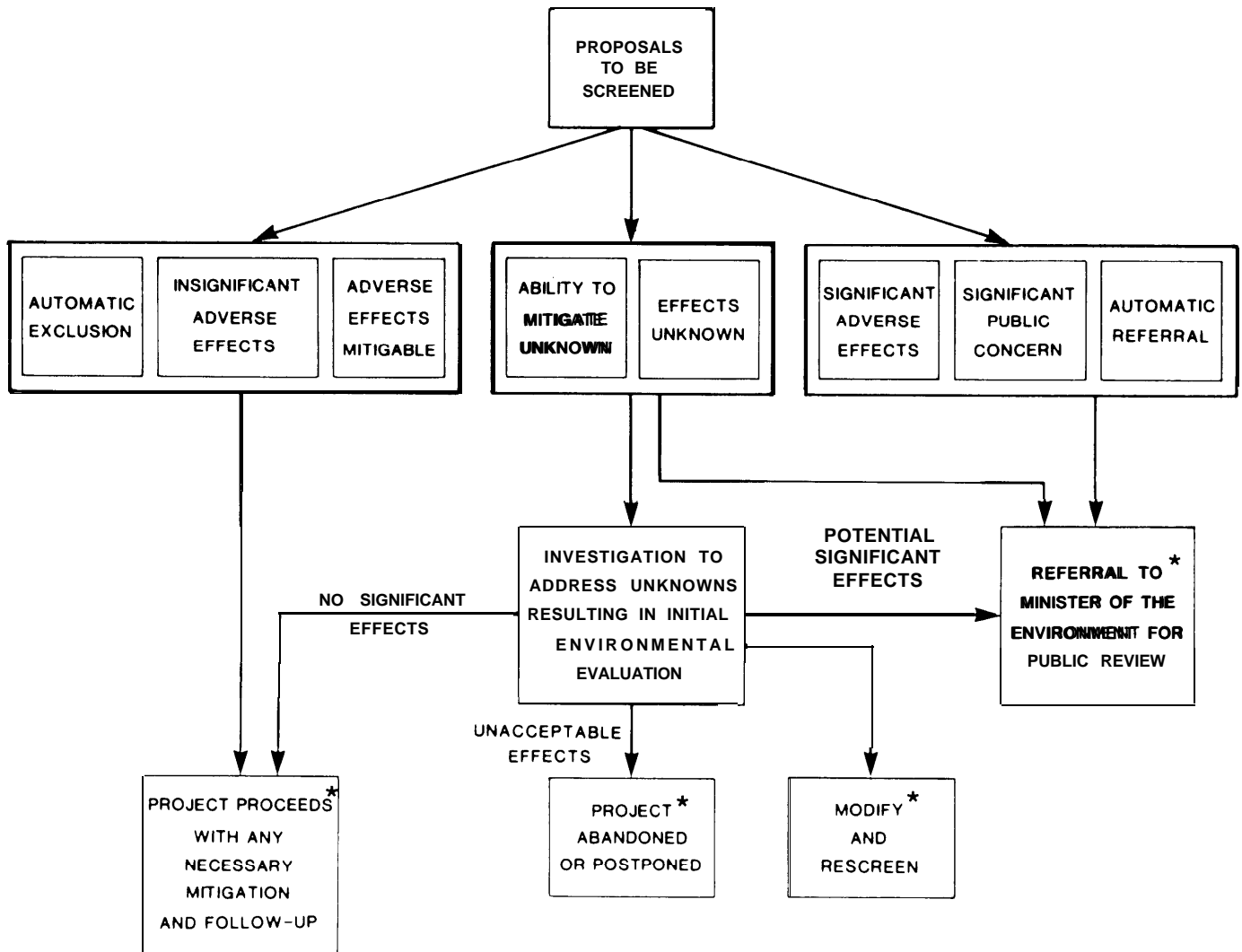
- might have an effect on federal Government responsibility;
  - would require federal Government financial commitment;
- or,
- would be undertaken on lands administered by the federal Government, including those offshore.

Initial assessment starts with an environmental screening by a department to determine the potential environmental and directly related social effects of a proposal; that is, effects that could bring adverse changes to the natural environment and effects that these changes could have on people. Screening may lead to additional study that results in a detailed document called an Initial Environmental Evaluation (IEE). This document is described in more detail on page 4 of the "Initial Assessment Guide" published by FEARO for departments to use during initial assessment. Its place in initial assessment can be seen in the diagram on page 4 of this Bulletin, which is taken from the Guide.

As a result of assessment, a department makes a decision about the environmental significance of a proposal. In this Bulletin each proposal listed has been assigned a number indicating what decision was taken. These decisions are described on page 5 in the section "How To Use This Bulletin." Eight decisions in that list are the same as those described on page 4 of the "Initial Assessment Guide." There are two additional numbers: 0 -to indicate that initial assessment of the proposal has started but no decision has been taken and 10 -to indicate that the proposal is to be carried out in another country under the auspices of the Canadian international Development Agency and although an environmental impact statement may be produced, there may be no public review by an independent panel.

Two of the decisions may be made immediately: automatic exclusion from study or automatic referral to the Minister of the Environment for a public review by an independent panel. Excluded proposals are those that would not produce any adverse environmental effects, such as routine maintenance. Automatic referrals are made for proposals that potentially could produce significant adverse environmental effects. Automatic exclusions or referrals are usually based on lists prepared by departments in co-operation with FEARO.

## INITIAL ASSESSMENT



---

## How to Use This Bulletin

The list in this bulletin consists of four columns of information:  
LOCATION – PROPOSAL – DEPARTMENT – DECISION

### Location

Locations are listed by province first and locality second, for example, ALTA.-Banff Park. Two other designations are used: offshore and international.

Provinces and territories are abbreviated as follows:

NFLD.	Newfoundland
N.B.	New Brunswick
QUE.	Quebec
MAN.	Manitoba
ALTA.	Alberta
Y.T.	Yukon Territory
P.E.I.	Prince Edward Island
N.S.	Nova Scotia
ONT.	Ontario
SASK.	Saskatchewan
B.C.	British Columbia
N.W.T.	Northwest Territories

Offshore designations are:

Gr. Banks	Grand Banks Offshore
	Labrador
Sct. Shelf	Scotian Shelf
H. Bay	Hudson Bay
B. Sea	Beaufort Sea
St. Lawrence	Gulf of St. Lawrence
Geo. Bank	Georges Bank
Arc. Is.	Arctic Islands
W. Coast	Offshore West Coast

The designation for proposals outside of Canada is Int. - Inter national.

### Proposal

Each proposal is described first from its largest to its smallest components in descending order, and second, by the action, for example, AIRPORT RUNWAY-EXTEND.

### Department

Department means any department, board or agency and any parent corporation of the Government of Canada.

### Decisions

Initial assessment decisions about proposals are listed as numbers and for the most part, are the same decisions as

those listed on page 4 of the "Initial Assessment Guide". Number 0, however, is not a decision; rather, it indicates that the initial assessment of the proposal has begun and no decision has been made as yet. One of the outcomes of initial assessment may be an automatic exclusion of a proposal from study. Exclusions are not included in this Bulletin but information about them may be obtained from departments. Decisions designated as Number 10, indicating the proposal is to be implemented in another country through CIDA, are not in the Guide but are in this Bulletin.

0 - initial assessment starting - no decision yet;

1 - automatically exclude proposal from study as a type that would not produce any adverse environmental effects, (NOT listed in this Bulletin);

2 - proceed with proposal because there are no significant adverse effects;

3 - proceed with proposal because the potentially adverse impacts may be mitigated with known technology;

4 - assess the proposal in greater detail (Initial Environmental Evaluation-IEE) because the adverse effects that might be caused by the proposal are unknown:

5 - give the proposal further study (IEE) because the ability to mitigate adverse effects is unknown;

6 - refer the proposal to the Minister of the Environment for a public review by a panel because the potential adverse impacts are significant;

7 - refer the proposal to the Minister of the Environment for a public review because public concern about it is such that a review is desirable:

8 - automatically refer the proposal to the Minister of the Environment for a public review as a type that potentially could produce significant environmental effects.

9 - either modify the proposal and rescreen it or abandon it because the impacts are unacceptable.

10 - production of an Environmental Impact Statement at request of the Canadian International Development Agency because potential adverse impacts are significant (CIDA)

### To Obtain More Information on Any Proposal

The list of proposals is a summary meant to identify, in a few key words, proposals that have entered the process. It is not intended to provide a complete description nor be the sole source for information about such proposals. More detail about any proposal, as well as lists of automatic exclusions and automatic referrals, is retained by the department concerned. Requests for additional information -available in either official language- should be made to the appropriate departmental contact listed at the end of this bulletin.

Mr. SK. McNeely  
Design Effectiveness  
Program Affairs  
Department of Regional  
Industrial Expansion  
8th Floor E.  
235 Queen Street  
Ottawa, Ontario  
K1A 0H5

Tel: (613) 954-5555

Ms. Ann Johnstone, Senior Adviser  
Planning and Co-ordination  
Intergovernmental & Industry Relations (DGCR/X)  
Transport Canada

26A, Tower C, Place de Ville  
330 Sparks Street  
Ottawa, Ontario  
K1A 0N5

Tel: (613) 995-1990



**INITIAL  
ASSESSMENT  
BULLETIN**

04/05/87

**INITIAL ASSESSMENT BULLETIN  
FEDERAL ENVIRONMENTAL ASSESSMENT AND REVIEW PROCESS**

PAGE NO. 1

<b>DOC. NO.</b>	<b>LOCATION</b>	<b>PROPOSAL</b>	<b>DEPT</b>	<b>DEC</b>
<b>86-3-0606</b>	<b>ALTA.</b>	<b>BRIGADE TRAINING AREA-PURCHASE OH RANCH</b>	<b>ND</b>	<b>4</b>
<b>86-3-0249</b>	<b>ALTA.-BANFF NP</b>	<b>AGT CABLE REPLACEMENT BON BRIDGE TO LAKE LOUISE</b>	<b>EC</b>	<b>3</b>
<b>86-3-0247</b>	<b>ALTA.-BANFF NP</b>	<b>BON RIVER-BRIDGE REPAIRS</b>	<b>EC</b>	<b>3</b>
<b>86-3-0241</b>	<b>ALTA.-BANFF NP</b>	<b>CHATEAU BY-PASS HORSE TRAIL</b>	<b>EC</b>	<b>3</b>
<b>86-3-0244</b>	<b>ALTA.-BANFF NP</b>	<b>EDITH PASS-TRAILHEAD FIRESIDE</b>	<b>EC</b>	<b>3</b>
<b>86-3-0242</b>	<b>ALTA.-BANFF NP</b>	<b>IEFFEL JUNCTION TRAIL-REHABILITATION</b>	<b>EC</b>	<b>3</b>
<b>86-3-0243</b>	<b>ALTA.-BANFF NP</b>	<b>FISK LAKES-WARDEN CABIN</b>	<b>EC</b>	
<b>86-3-0250</b>	<b>ALTA.-BANFF NP</b>	<b>LARCH VALLEY-REHABILITATION</b>	<b>EC</b>	
<b>86-3-0245</b>	<b>ALTA.-BANFF NP</b>	<b>PALLISER CABIN-REPLACEMENT</b>	<b>EC</b>	<b>3</b>
<b>86-3-0251</b>	<b>ALTA.-BANFF NP</b>	<b>PARCAN STAFF HOUSING</b>	<b>EC</b>	<b>3</b>
<b>86-3-0246</b>	<b>ALTA.-BANFF NP</b>	<b>SUNSHINE ROAD-PAVE</b>	<b>EC</b>	<b>3</b>
<b>86-3-0252</b>	<b>ALTA.-BANFF NP</b>	<b>TOWNSITE SEWAGE TREATMENT PLANT BANFF</b>	<b>EC</b>	<b>3</b>
<b>86-3-0240</b>	<b>ALTA.-BANFF NP</b>	<b>WISHBONE CHAIRLIFT-NORQUAY SKI AREA</b>	<b>EC</b>	<b>3</b>
<b>86-3-0248</b>	<b>ALTA.-BANFF NP</b>	<b>WOLF STREET-BRIDGE DEVELOPMENT</b>	<b>EC</b>	<b>3</b>
<b>86-3-0003</b>	<b>ALTA. - CALGARY</b>	<b>AIRCRAFT DE-ICING/ANTI-ICING PROGRAM</b>	<b>TC</b>	<b>4</b>
<b>86-3-0001</b>	<b>ALTA. - CALGARY</b>	<b>CONSTRUCT WASHROOM AT TAXI/BUS BULLPEN</b>	<b>TC</b>	<b>2</b>
<b>86-3-0004</b>	<b>ALTA. - CALGARY</b>	<b>OPERATIONS BUILDING-CONTROL TOWER</b>	<b>TC</b>	<b>2</b>
<b>86-3-0002</b>	<b>ALTA. - CALGARY</b>	<b>STORM DRAINAGE PHASE II-MTAVISH ROAD</b>	<b>TC</b>	<b>3</b>
<b>86-3-0005</b>	<b>ALTA. - EDMONTON</b>	<b>AIRCRAFT DE-ICING/ANTI-ICING PROGRAM</b>	<b>TC</b>	<b>4</b>
<b>86-3-0006</b>	<b>ALTA. - EDMONTON</b>	<b>STORM DRAINAGE IMPROVEMENTS</b>	<b>TC</b>	<b>2</b>
<b>86-3-0007</b>	<b>ALTA.-ERO NORTH</b>	<b>SECURITY FENCE</b>	<b>TC</b>	<b>2</b>
<b>86-3-0008</b>	<b>ALTA.-ERO SOUTH</b>	<b>SECURITY FENCE</b>	<b>TC</b>	<b>2</b>
<b>86-3-0009</b>	<b>ALTA. - FORT NORMAN</b>	<b>SAFETY/BOUNDARY FENCE</b>	<b>TC</b>	<b>2</b>
<b>86-3-0010</b>	<b>ALTA.-GRANDE PRAIRIE</b>	<b>NEW ENTRANCE ROAD</b>	<b>TC</b>	<b>2</b>
<b>86-3-0255</b>	<b>ALTA. - JASPER NP</b>	<b>ALBERTA HUT-TRAILHEAD PARKING</b>	<b>EC</b>	<b>3</b>
<b>86-3-0258</b>	<b>ALTA. - JASPER NP</b>	<b>BACKSLOPE WIDENING-OLLIE'S CORNER</b>	<b>EC</b>	<b>3</b>
<b>86-3-0262</b>	<b>ALTA. - JASPER NP</b>	<b>ROADSIDE CLEARING</b>	<b>EC</b>	<b>3</b>
<b>86-3-0256</b>	<b>ALTA. - JASPER NP</b>	<b>SEWERAGE SYSTEM MALIGNE CANYON TEA HOUSE</b>	<b>EC</b>	<b>3</b>
<b>86-3-0253</b>	<b>ALTA. - JASPER NP</b>	<b>SNARING OVERFLOW CAMPGROUND-REPLACEMENT</b>	<b>EC</b>	<b>3</b>
<b>86-3-0254</b>	<b>ALTA. - JASPER NP</b>	<b>TANGLE FLATS STREAMBED MAINTENANCE</b>	<b>EC</b>	<b>3</b>
<b>86-3-0260</b>	<b>ALTA. - JASPER NP</b>	<b>TONQUIN TRAIL RECONSTRUCTION KM 17.4 TO 31.7</b>	<b>EC</b>	<b>3</b>
<b>86-3-0259</b>	<b>ALTA. - JASPER NP</b>	<b>TONQUIN TRAIL RECONSTRUCTION KM 7.3 TO 11.6</b>	<b>EC</b>	<b>3</b>
<b>86-3-0261</b>	<b>ALTA. - JASPER NP</b>	<b>TONQUIN TRAIL-CAMPGROUNDS AND LUNCH STOPS</b>	<b>EC</b>	<b>3</b>
<b>86-3-0263</b>	<b>ALTA. - JASPER NP</b>	<b>TOWNSITE FIRE GUARD</b>	<b>EC</b>	<b>3</b>
<b>86-3-0257</b>	<b>ALTA. - JASPER NP</b>	<b>WHISTLER AND PYRAMD ROAD REHABILITATION</b>	<b>EC</b>	<b>3</b>

04/05/87

**INITIAL ASSESSMENT BULLETIN  
FEDERAL ENVIRONMENTAL ASSESSMENT AND REVIEW PROCESS**

PAGE NO. 2

<b>DOC. NO.</b>	<b>LOCATION</b>	<b>PROPOSAL</b>	<b>DEPT</b>	<b>DEC</b>
86-3-0011	ALTA.-LETHBRIDGE	SAND STORAGE BUILDING	TC	2
86-3-0012	ALTA. - PEACE RIVER	NEW FIREHALL	TC	2
86-3-0013	ALTA.-SPRINGBANK	SAND STORAGE BUILDING	TC	2
86-3-0014	ALTA.-VILLENEUVE	SAND STORAGE BUILDING	TC	2
86-3-0269	ALTA.-WATERTON LAKES NP	PINCHER/CARDSTON LOOP HIGHWAY IMPROVEMENT	EC	3
86-3-0268	ALTA.-WATERTON LAKES NP	REHABILITATION OF DISTURBED AREAS	EC	3
86-3-0264	ALTA.-WATERTON LAKES NP	SEPTIC TANK INSTALLATION	EC	3
86-3-0267	ALTA.-WATERTON LAKES NP	SEWAGE DISPOSAL SITE	EC	3
86-3-0265	ALTA.-WATERTON LAKES NP	TRAIL MAINTENANCE	EC	3
86-3-0266	ALTA.-WATERTON LAKES NP	WATERING POND-BISON PADDOCK	EC	3
86-3-0589	ARC. IS.	ODP 02007 - DUMPING	EC	3
86-3-0590	ARC. IS.	ODP 02027 - DUMPING	EC	3
86-3-0591	ARC. IS.	ODP 02110 - ICE DUMPING	EC	3
86-3-0592	B. SEA	ODP 02028 - DUMPING	EC	3
86-3-0593	B. SEA	ODP 02054 - DUMPING	EC	3
86-3-0594	B. SEA	ODP 02056 - DUMPING	EC	3
86-3-0595	B. SEA	ODP 02067 - DREDGING	EC	3
86-3-0596	B. SEA	ODP 02073 - AMAULIGAK 1-65 - DREDGING	EC	3
86-3-0597	B. SEA	ODP 02112 - EQUIPMENT	EC	3
86-3-0598	B. SEA	ODP 02113 - EQUIPMENT	EC	3
86-3-0599	B. SEA	ODP 02114 - DUMPING	EC	3
86-3-0600	B. SEA	ODP 02115 - DUMPING	EC	3
86-3-0601	B. SEA	ODP 02116 - DUMPING	EC	3
86-3-0605	B. C.	LOW LEVEL MILITARY FLIGHT TRAINING	ND	4
86-3-0015	B. C. - ABBOTSFORD	UPGRADE CFR TRAINING AREA	TC	3
86-3-0016	B. C. - CAMPBELL RIVER	PERMANENT FLIGHTWAY CLEARING	TC	2
86-3-0603	B. C. - CFB ESQUIMALT	JETTY IMPROVEMENTS	ND	4
86-3-0017	B. C. - CRANBROOK	FIREHALL ACCESS ROADS AND PARKING LOT	TC	2
86-3-0287	B. C. - CRAVEN CR.	HYDROMETRIC STATION CONSTRUCTION	EC	3
86-3-0019	B. C. - DAVSON CREEK	REPAIR UNDERGROUND FUEL TANKS	TC	2
86-3-0018	B. C. - DAVSON CREEK	SAND/UREA STORAGE BUILDING	TC	2
86-3-0292	B. C. - DEWDNEY	DYKE IMPROVEMENTS	EC	3
86-3-0020	B. C. - FORT ST. JOHN	NEW FEC/IPU	TC	2
86-3-0272	B. C. - GLACIER NP	DOUBLE TRACKING MILE 90	EC	3
86-3-0271	B. C. - GLACIER NP	ILLECITLMAET CAMPGROUND SEWAGE UPGRADING	EC	3

04/05/87

INITIAL ASSESSMENT BULLETIN  
FEDERAL ENVIRONMENTAL ASSESSMENT AND REVIEW PROCESS

PAGE NO. 3

DOC. NO.	LOCATION	PROPOSAL	DEPT	DEC
86-3-0270	B. C. - GLACIER NP	SINGLE BENCH STREAMBED MANIPULATION	EC	3
86-3-0611	B. C. - GLACIER NP	SINGLE BENCH STREAMBED MANIPULATION	EC	3
86-3-0293	B. C. - HIDDEN CR.	HYDROMETRIC STATION REPLACE METERING BRIDGE	EC	3
86-3-0300	B. C. - ISKUT RIVER	HYDROMETRIC STATION NEW BOOM GUAGE	EC	3
86-3-0021	B. C. - KAMLOOPS	UPGRADE CFR TRAINING AREA	TC	3
86-3-0288	B. C. - KLAPPAN RIVER	HYDROMETRIC STATION CONSTRUCTION	EC	3
86-3-0289	B. C. - KLAPPAN RIVER TRIBUTORY	HYDROMETRIC STATION CONSTRUCTION	EC	3
86-3-0275	B. C. - KOOTENAY NP	CROOK'S MEADOW GROUP CAMP	EC	3
86-3-0273	B. C. - KOOTENAY NP	FLOE LAKE CAMPSITE REDEVELOPMENT	EC	3
86-3-0274	B. C. - KOOTENAY NP	ROCKWALL PASS TRAIL UPGRADING	EC	3
86-3-0298	B. C. - KOOTENAY RIVER	HYDROMETRIC STATION REBUILD CABLEWAY	EC	3
86-3-0284	B. C. - LINE CR.	HYDROMETRIC STATION REPAIR	EC	3
86-3-0290	B. C. - MCIVOR CR.	HYDROMETRIC STATION MAINTENANCE	EC	3
86-3-0276	B. C. - MOUNT REVELSTOKE NP	LAURETTA CREEK CULVERTS	EC	3
86-3-0285	B. C. - NICOLA RIVER	HYDROMETRIC STATION CONSTRUCTION	EC	3
86-3-0278	B. C. - PACIFIC RIM NP	GREENPOINT CAMPGROUND- EXPANSION	EC	3
86-3-0279	B. C. - PACIFIC RIM NP	KLANANA CABIN-SHELTER	EC	0
86-3-0280	B. C. - PACIFIC RIM NP	REPAIR OF SHORELINE EROSION-GUIL BAY ROAD	EC	3
86-3-0277	B. C. - PACIFIC RIM NP	ROAD DITCHING-REQUIRE AREA FOR WASTE	EC	3
86-3-0022	B. C. - PAT BAY	DREDGING OF SEA PLANE BASE	TC	3
86-3-0023	B. C. - PORT HARDY	UPGRADE CFR TRAINING AREA	TC	3
86-3-0604	B. C. - PRINCE RUPERT	FUEL TANKS CONSTRUCT	ND	3
86-3-0024	B. C. - QUESNEL	RELOCATE/UPGRADE CFR TRAINING AREA	TC	3
86-3-0025	B. C. - SANDSPIT	BUILD FIRE TRAINING AREA	TC	3
86-3-0291	B. C. - SARITA CR.	HYDROMETRIC STATION MAINTENANCE	EC	3
86-3-0026	B. C. - SMITHERS	CONSTRUCT CFR ACCESS ROAD SOUTH END	TC	2
86-3-0294	B. C. - STUART RIVER	HYDROMETRIC STATION RECONSTRUCTION	EC	3
86-3-0286	B. C. - SUKUNKA RIVER	HYDROMETRIC STATION DISMANTLE	EC	3
86-3-0297	B. C. - UNCONA RIVER	HYDROMETRIC STATION LOWER INTAKE PIPE	EC	3
86-3-0295	B. C. - UNUK RIVER	HYDROMETRIC STATION NEW BOOM GUAGE	EC	3
86-3-0029	B. C. - VANCOUVER	CHANNEL ENLARGEMENTS/NEW CULVERTS EAST	TC	3
86-3-0028	B. C. - VANCOUVER	DYKE RESTORATION PROGRAM	TC	3
86-3-0027	B. C. - VANCOUVER	RESTORATION OF FIRE TRAINING AREA	TC	3
86-3-0226	B. C. - VANCOUVER WEST	MIXED LAND-USE DEVELOPMENT PROPOSAL	PWC	3
86-3-0030	B. C. - VICTORIA	EXTEND TAXI 'K' FROM RUNWAY 08-26 TO TAXI 'E'	TC	2

04/05/87

INITIAL ASSESSMENT BULLETIN  
FEDERAL ENVIRONMENTAL ASSESSMENT AND REVIEW PROCESS

PAGE NO. 4

DOC. NO.	LOCATION	PROPOSAL	DEPT	DEC
86-3-0197	B.C.-VICTORIA (OGDEN POINT)	FILL NEAR HELIPORT	TC	2
86-3-0296	B.C.-WEST ROAD RIVER	HYDROMETRIC STATION REBUILD CABLEWAY	EC	3
86-3-0031	B.C.-WILLIAMS LAKE	DEVELOP TAXIWAY	TC	2
86-3-0281	B.C.-YOHO NP	CONSTRUCTION CAMP EMERALD LAKE DEVELOPMENT	EC	3
86-3-0282	B.C.-YOHO NP	EMERALD LAKE LINE INSTALLATION	EC	3
86-3-0283	B.C.-YOHO NP	WET WELL CONSTRUCTION, EMERALD LAKE DEVELOPMENT	EC	3
86-3-0299	B.C.-ZYMOETZ RIVER	HYDROMETRIC STATION RECONSTRUCTION	EC	3
86-3-0613	GEO. BANK	OFFSHORE EXPLORATORY DRILLING	COGLA	0
86-3-0445	GR. BANKS	ODP 01900 - DREDGING	EC	3
86-3-0446	GR. BANKS	ODP 01925 - EQUIPMENT DISPOSAL	EC	3
86-3-0447	GR. BANKS	ODP 01933 - DREDGING	EC	3
86-3-0448	GR. BANKS	ODP 01959 - EQUIPMENT DISPOSAL	EC	3
86-3-0449	GR. BANKS	ODP 01960 - EQUIPMENT DISPOSAL	EC	3
86-3-0450	GR. BANKS	ODP 01961 - EQUIPMENT DISPOSAL	EC	3
86-3-0451	GR. BANKS	ODP 01962 - EQUIPMENT DISPOSAL	EC	3
86-3-0452	GR. BANKS	ODP 01963 - EQUIPMENT DISPOSAL	EC	3
86-3-0453	GR. BANKS	ODP 01987 - DREDGING	EC	3
86-3-0454	GR. BANKS	ODP 02012 - DREDGING	EC	3
86-3-0455	GR. BANKS	ODP 02033 - DREDGING	EC	3
86-3-0456	GR. BANKS	ODP 02049 - DREDGING	EC	3
86-3-0457	GR. BANKS	ODP 02090 - DREDGING	EC	3
86-3-0602	H. BAY	ODP 01957 - DREDGING	EC	3
86-3-0221	INT. - BANGLADESH	MINOR CROP DEVELOPMENT FOR SMALL FARMERS	CIDA	2
86-3-0218	INT. - BARBADOS	NATURAL GAS PIPELINE	CIDA	3
86-3-0222	INT. - INDIA-TAMIL NADU	INCREASED AGRIC. PRODUCTION & INSTITUTIONAL SUPPORT	CIDA	2
86-3-0219	INT. - JAMAICA	FOOD IRRADIATION FEASIBILITY STUDY	CIDA	2
86-3-0220	INT. - PERU	COMMUNITY SUPPORT FOR ALPACA BREEDERS	CIDA	2
86-3-0223	INT. - SRI LANKA	TECHNICAL ASSISTANCE TO THE MAHAWELI AUTHORITY	CIDA	2
86-3-0032	MAN. - BRANDON	FIELD ELECTRICAL CENTRE	TC	3
86-3-0033	MAN. - BRANDON	SAND STORAGE BUILDING	TC	2
86-3-0036	MAN. - CHURCHILL	AIR TERMINAL BUILDING	TC	2
86-3-0037	MAN. - CHURCHILL	CRASH FIRE TRAINING	TC	4
86-3-0035	MAN. - CHURCHILL	OFF-OIL TO ELECTRIC	TC	3
86-3-0034	MAN. - CHURCHILL	REPLACE POWERLITE SWITCHGEAR	TC	3
86-3-0038	MAN. - FLIN FLON	REPLACE 2-BURIED AND 1-ABOVE GROUND TANKS	TC	3

04/05/87

**INITIAL ASSESSMENT BULLETIN  
FEDERAL ENVIRONMENTAL ASSESSMENT AND REVIEW PROCESS**

PAGE NO. 5

<b>DOC. NO.</b>	<b>LOCATION</b>	<b>PROPOSAL</b>	<b>DEPT</b>	<b>DEC</b>
86-3-0039	MAN. - GILLAM	AIRPORT TERMINAL BUILDING	TC	2
86-3-0040	MAN. - LYNN LAKE	CRASH FIRE TRAINING AREA	TC	4
86-3-0301	MAN. - RIDING MOUNTAIN NP	CROSS COUNTRY SKI HUT-MOOSE LAKE	EC	3
86-3-0304	MAN. - RIDING MOUNTAIN NP	INTERSECTION REDESIGN	EC	3
86-3-0303	MAN. - RIDING MOUNTAIN NP	MANAGEMENT PLAN REVIEW	EC	0
86-3-0302	MAN. - RIDING MOUNTAIN NP	TRAIL MAINTENANCE EXISTING WARDEN PATROL TRAILS	EC	0
86-3-0042	MAN. - ST. ANDREWS	IMPROVE OIL SEPARATOR	TC	3
86-3-0041	MAN. - ST. ANDREWS	REPLACE UNDERGROUND DIESEL AND GAS STORAGE TANKS	TC	3
86-3-0043	MAN. - WINNIPEG	AIRCRAFT DE-ICING/ANTI-ICING	TC	4
86-3-0044	MAN. - WINNIPEG	CONSTRUCTION OF INNER PERIMETER SECURITY ROAD	TC	2
86-3-0609	N. B.	TRACADIE FLIGHT RANGE-EXPAND	ND	4
86-3-0225	N. B. - FREDERICTON	HAZARDOUS MATERIAL REVIEW GOV. OF CANADA BLDG.	PWC	2
86-3-0317	N. B. - FUNDY NP	ALMA BEACH SHORE PROTECTION	EC	3
86-3-0305	N. B. - FUNDY NP	FOREST SITE CLASSIFICATION PROJECT	EC	3
86-3-0310	N. B. - FUNDY NP	FUNDY CENTENNIAL PLAYGROUND	EC	3
86-3-0308	N. B. - FUNDY NP	HEADQUARTERS CAMPGROUND ENTRANCE	EC	3
86-3-0312	N. B. - FUNDY NP	INTERP. PLAN IMPLEMENTATION-ALMA BEACH	EC	3
86-3-0315	N. B. - FUNDY NP	MOOSEHORN AND FORKS TRAIL SURFACE UPGRADING	EC	3
86-3-0313	N. B. - FUNDY NP	PLAN TO MANAGE VEGETATION WITHIN CAMPGROUNDS	EC	3
86-3-0309	N. B. - FUNDY NP	POINT WOLFE BEACH TRAIL	EC	3
86-3-0314	N. B. - FUNDY NP	POINT WOLFE EROSION PROTECTION	EC	3
86-3-0316	N. B. - FUNDY NP	RELOCATION OF 114 WOLFE LAKE	EC	3
86-3-0307	N. B. - FUNDY NP	SALMON RIVER WATER INTAKE	EC	3
86-3-0306	N. B. - FUNDY NP	UPPER SALMON RIVER HIKING TRAIL	EC	3
86-3-0311	N. B. - FUNDY NP	UPPER SALMON RIVER HIKING TRAIL	EC	3
86-3-0321	N. B. - KOUCHIBOUGUAC NP	FLOATING WHARF INSTALLATION & DREDGING	EC	3
86-3-0319	N. B. - KOUCHIBOUGUAC NP	HIGHWAY BRIDGE ASSESSMENTS	EC	3
86-3-0318	N. B. - KOUCHIBOUGUAC NP	PARK ENTRANCE GATEWAY PROJECT	EC	3
86-3-0320	N. B. - KOUCHIBOUGUAC NP	PATTERSON FIELD PLANTING	EC	3
86-3-0200	N. S. - ANNAPOLIS ROYAL	REPLACE STEEL SHEET PILE WHARF FACE	TC	4
86-3-0352	N. S. - CAPE BRETON HIGHLANDS NP	ACCESS TO WATER LEVEL GAUGE	EC	3
86-3-0346	N. S. - CAPE BRETON HIGHLANDS NP	BLACK BROOK SEWAGE SYSTEM OUTFLOW	EC	3
86-3-0345	N. S. - CAPE BRETON HIGHLANDS NP	EXTENSION: JIGGING COVE LAKE HIKING TRAIL	EC	3
86-3-0347	N. S. - CAPE BRETON HIGHLANDS NP	LE BUTTEREAU TRAIL	EC	3
86-3-0351	N. S. - CAPE BRETON HIGHLANDS NP	MOTEL COMPLEX	EC	0

04/05/87

**INITIAL ASSESSMENT BULLETIN  
FEDERAL ENVIRONMENTAL ASSESSMENT AND REVIEW PROCESS**

PAGE NO. 6

<b>DOC. NO.</b>	<b>LOCATION</b>	<b>PROPOSAL</b>	<b>DEPT</b>	<b>DEC</b>
86-3-0354	N. S. - CAPE BRETON HIGHLANDS NP	RIGHT OF WAY CLEARING/CONCEPTUAL SCREENING	EC	3
86-3-0348	N. S. - CAPE BRETON HIGHLANDS NP	SCENIC VIEWING OPPORTUNITIES	EC	3
86-3-0350	N. S. - CAPE BRETON HIGHLANDS NP	TELEPHONE PLANT/BURIAL MAINTENANCE	EC	3
86-3-0349	N. S. - CAPE BRETON HIGHLANDS NP	TRAIL REPAIRS CLYBURN SHORELINE	EC	3
86-3-0353	N. S. - CAPE BRETON HIGHLANDS NP	WATER LINE REPLACEMENT	EC	3
86-3-0355	N. S. - FORTRESS OF LOUISBOURG N. H. P.	LOUISBOURG BARRIER BEACH SHORE PROTECTION	EC	3
86-3-0356	N. S. - GRAND PRE N. H. P.	RESURFACE PATHWAYS	EC	3
86-3-0047	N. S. - HALIFAX	AIRCRAFT DE-ICING/ANTI-ICING PROGRAM	TC	4
86-3-0046	N. S. - HALIFAX	COVER PYRITIC SHALE	TC	3
86-3-0048	N. S. - HALIFAX	EXPAND APRON SOUTHWARD	TC	3
86-3-0049	N. S. - HALIFAX	INCREASE SHORT TERM METERED PARKING	TC	2
86-3-0359	N. S. - KEJIMIKUJIK NP	ALTERATION TO LOGGING SLUICE	EC	3
86-3-0357	N. S. - KEJIMIKUJIK NP	BEAR MANAGEMENT PLAN & OPERATIONAL GUIDELINES	EC	3
86-3-0363	N. S. - KEJIMIKUJIK NP	BOARDWALK REPLACEMENT	EC	3
86-3-0360	N. S. - KEJIMIKUJIK NP	BOUNDARY CLEARING & IDENTIFICATION	EC	3
86-3-0362	N. S. - KEJIMIKUJIK NP	BRIDGE REPAIR	EC	3
86-3-0361	N. S. - KEJIMIKUJIK NP	CULVERT INSTALLATION	EC	3
86-3-0358	N. S. - KEJIMIKUJIK NP	PESKOWESK LAKE PATROL CABIN	EC	3
86-3-0364	N. S. - PORT ROYAL N. H. P.	TREE PLANTING	EC	3
86-3-0050	N. S. - SYDNEY	EXPAND METERED PARKING	TC	2
86-3-0051	N. S. - SYDNEY	REPLACE UNDERGROUND FUEL TANKS CSB/FEC	TC	2
86-3-0201	N. S. - YARMOUTH	MAINTENANCE DREDGING	TC	4
86-3-0607	N. W. T.	LOW-LEVEL MILITARY FLIGHT TRAINING N. W. T., SASK., ALTA	ND	4
86-3-0608	N. W. T.	NORTH WARNING SYSTEM SHORT & LONG RANGE SITES N. W. T.	ND	4
86-3-0052	N. W. T. - AKLAVIK	REPAIR RIVER BANK	TC	2
86-3-0216	N. W. T. - BREVOORT ISLAND	DND-SITE RECONSTRUCTION	INAC	2
86-3-0365	N. W. T. - HAHANNI NP	VIRGINIA FALLS REHABILITATION	EC	3
86-3-0054	N. W. T. - NORMAN WELLS	CONTAINED SERVICES BUILDING	TC	2
86-3-0055	N. W. T. - WHALE COVE	PASSENGER SHELTER	TC	2
86-3-0366	N. W. T. - WOOD BUFFALO NP	BORROW PIT TESTING	EC	3
86-3-0367	N. W. T. - WOOD BUFFALO NP	TRAPPERS CABIN CONSTRUCTION, A. TALLCREE	EC	3
86-3-0217	N. W. T. - Y. T. - 8 SITES	NORTH WARNING SYSTEM-LONG RANGE RADAR	INAC	4
86-3-0207	N. W. T. - YELLOWKNIFE	HIGHWOOD RESOURCES LTD. - MINING EXPLORATION	INAC	4
86-3-0610	NFLD.	LOW-LEVEL MILITARY FLYING-EXPAND	ND	6
86-3-0206	NFLD. - (LAB) BLACK TICKLE	WHARF RECONSTRUCTION	TC	2

04/05/87

**INITIAL ASSESSMENT BULLETIN  
FEDERAL ENVIRONMENTAL ASSESSMENT AND REVIEW PROCESS**

PAGE NO. 7

DOC. NO.	LOCATION	PROPOSAL	DEPT	DEC
86-3-0205	NFLD. - (LAB) GOOSE BAY	HARBOUR IMPROVEMENTS	TC	2
86-3-0322	NFLD. - CASTLE HILL NHP	CASTLE HILL N. H. P. SEWAGE DISPOSAL FIELD	EC	3
86-3-0045	NFLD. - GANDER	REPLACE HEATING FUEL TANK	TC	2
86-3-0323	NFLD. - GROS MORNE NP	BAKER'S BROOK TRAIL	EC	3
86-3-0326	NFLD. - GROS MORNE NP	GEOTECH INVESTIGATIONS-BIG HILL PLATEAU ACCESS SYSTEM	EC	3
86-3-0337	NFLD. - GROS MORNE NP	GREEN POINT CAMPGROUND (PRE-DESIGN STAGE)	EC	3
86-3-0327	NFLD. - GROS MORNE NP	GREEN PT CAMPGROUND EXPANSION (PROJECT DEFINITION STAGE)	EC	0
86-3-0332	NFLD. - GROS MORNE NP	GROUP TENTING AREA (PRE-DESIGN STAGE)	EC	3
86-3-0325	NFLD. - GROS MORNE NP	GROUP TENTING AREA (PROJECT DEFINITION STAGE)	EC	0
86-3-0328	NFLD. - GROS MORNE NP	INSTALLATION OF NEW BRIDGE AT TROUT RIVER	EC	3
86-3-0333	NFLD. - GROS MORNE NP	LOMOND AREA REHABILITATION	EC	3
86-3-0336	NFLD. - GROS MORNE NP	LOMOND CAMPGROUND (PRE-DESIGN STAGE)	EC	3
86-3-0324	NFLD. - GROS MORNE NP	LOMOND CAMPGROUND (PROJECT DEFINITION STAGE)	EC	0
86-3-0324	NFLD. - GROS MORNE NP	LOMOND RIVER TRAIL	EC	3
86-3-0331	NFLD. - GROS MORNE NP	LOMOND ROAD RECONSTRUCTION (PRE-DESIGN STAGE)	EC	0
86-3-0338	NFLD. - GROS MORNE NP	RECREATION COMPLEX (PRE-DESIGN STAGE)	EC	3
86-3-0330	NFLD. - GROS MORNE NP	REHABILITATION OF FIVE BRIDGES-1986	EC	3
86-3-0329	NFLD. - GROS MORNE NP	ROCKY BARACHOIS PIT REHABILITATION-PHASE I	EC	3
86-3-0335	NFLD. - GROS MORNE NP	WIGWAM POND-STUCKLESS POND X-C SKI TRAIL	EC	3
86-3-0339	NFLD. - L'ANSE AUX MEADOWS	UPGRADE AND PAVE BEAK POINT ROAD	EC	3
86-3-0237	NFLD. - PORT HOPE SIMPSON	WASTE HEAT RECOVERY	EMR	2
86-3-0340	NFLD. - SIGNAL HILL N. H. P.	QUEENS BATTERY BARRACKS CONSTRUCTION	EC	3
86-3-0341	NFLD. - SIGNAL HILL N. H. P.	SIGNAL HILL N. H. P. MAINTENANCE COMPOUND	EC	3
86-3-0204	NFLD. - ST-ANTHONY	WHARF IMPROVEMENTS	TC	2
86-3-0224	NFLD. - ST. JOHN'S	RENOVATION-SIR HUMPHREY GILBERT BLDG	PWC	2
86-3-0203	NFLD. - ST. LAWRENCE	WHARF EXTENSION AND SHED CONSTRUCTION	TC	4
86-3-0343	NFLD. - TERRA NOVA NP	TERRA NOVA ROAD REALIGNMENT TRAVERSE	EC	3
86-3-0344	NFLD. - TERRA NOVA NP	TWIN R. GOLF COURSE PUMP STN WATER INTAKE IMPROVEMENTS	EC	3
86-3-0342	NFLD. - TERRA NOVA NP	WHARF CONSTRUCTION SOUTH BROAD COVE	EC	3
86-3-0056	ONT. - DRYDEN	COMBINED SERVICES BUILDING	TC	2
86-3-0369	ONT. - FORT ST. JOSEPH NHP	RUINS LANDSCAPING	EC	0
86-3-0368	ONT. - FORT ST. JOSEPH NHP	UPGRADING ENTRANCE ROAD	EC	3
86-3-0373	ONT. - GEORGIAN BAY ISL. NP	BEACHY COVE BREAKWALL	EC	3
86-3-0374	ONT. - GEORGIAN BAY ISL. NP	CEDAR SPRING CAMPGROUND REHABILITATION	EC	0
86-3-0371	ONT. - GEORGIAN BAY ISL. NP	OJIBWAY DOCK REPLACEMENT	EC	3

✓



04/05/87

**INITIAL ASSESSMENT BULLETIN  
FEDERAL ENVIRONMENTAL ASSESSMENT AND REVIEW PROCESS**

PAGE NO. 8

DOC. NO.	LOCATION	PROPOSAL	DEPT	DEC
86-3-0370	ONT. - GEORGIAN BAY ISL. NP	PARK CONSERVATION PLAN	EC	3
86-3-0372	ONT. - GEORGIAN BAY ISL. NP	PRIMITIVE CAMPGROUND REHABILITATION	EC	3
86-3-0058	ONT. - GORE BAY	CONSTRUCT UNHEATED STORAGE BUILDING	TC	2
86-3-0057	ONT. - GORE BAY	RESTORE ENTRANCE ROAD	TC	2
86-3-0060	ONT. - HAMILTON	CONSTRUCT MAINTENANCE SERVICES BUILDING	TC	2
86-3-0059	ONT. - HAMILTON	DEVELOP COMMERCIAL AVIATION AREA	TC	2
86-3-0061	ONT. - KAPUSKASING	ADD WATER RESERVOIR & EXTEND WATER SUPPLY	TC	2
86-3-0062	ONT. - KENORA	APRON EXPANSION AND REPLACE MET SITE	TC	3
86-3-0064	ONT. - LONDON	CONSTRUCT COVERED BAGGAGE	TC	2
86-3-0063	ONT. - LONDON	INSTALL FREIGHT ELEVATOR (DUMBWAITER)	TC	2
86-3-0065	ONT. - MDOSONEE	IMPROVE OPERATIONAL SURFACES	TC	3
86-3-0066	ONT. - NORTH BAY	REPLACE UNHEATED STORAGE BUILDING	TC	2
86-3-0068	ONT. - OSHAWA	REPLACE FEC, SHELTER, CONTROL PANEL, IPU	TC	2
86-3-0067	ONT. - OSHAWA	RESURFACE RUNWAY 04-22 INCL. DRAINAGE & LIGHTING SYS.	TC	2
86-3-0069	ONT. - OTTAWA	AIRCRAFT DE-ICING/ANTI-ICING PROGRAM	TC	4
86-3-0076	ONT. - OTTAWA	AIRPORT ZONING, TREE CUTTING & DPW SURVEY NEEDS	TC	2
86-3-0074	ONT. - OTTAWA	EXPAND NORTH FIELD C.A. DEVELOPMENT	TC	2
86-3-0077	ONT. - OTTAWA	IMPLEMENT ECONOM/ PARKING/SHUTTLE BUS OPERATION	TC	2
86-3-0070	ONT. - OTTAWA	NEW FIELD ELECTRICAL CENTRE	TC	2
86-3-0075	ONT. - OTTAWA	PCB TRANSFORMER STORAGE FACILITY	TC	2
86-3-0071	ONT. - OTTAWA	RESTORE NORTH FIELD AIRSIDE SURFACE - PHASE I	TC	2
86-3-0073	ONT. - OTTAWA	RESTORE NORTH FIELD AIRSIDE SURFACES - PHASE II	TC	2
86-3-0072	ONT. - OTTAWA	RESTORE NORTH FIELD ROADS AND DRAINAGE	TC	2
86-3-0238	ONT. - PEAWANUCK	WOOD HEATING PROJECT	EMR	2
86-3-0375	ONT. - POINT PELEE NP	COMPOUND EVALUATIONS	EC	0
86-3-0376	ONT. - POINT PELEE NP	MARSH BOARDWALK AREA	EC	0
86-3-0379	ONT. - PUKASKWA NP	COASTAL HIKING TRAIL RECAPITALIZATION	EC	3
86-3-0378	ONT. - PUKASKWA NP	MOOSE MANAGEMENT PLAN	EC	0
86-3-0377	ONT. - PUKASKWA NP	PUKASKWA HATTIE AREA DEVELOPMENT PLAN	EC	1
86-3-0380	ONT. - PUKASKWA NP	REHABILITATE CAMPSITE, FISHERMAN'S COVE	EC	0
86-3-0381	ONT. - PUKASKWA NP	UPGRADE HWY 627	EC	0
86-3-0078	ONT. - RED LAKE	CRASH FIREFIGHTING TRAINING AREA	TC	4
86-3-0079	ONT. - RED LAKE	SECURITY FENCE AND CULVERTS	TC	2
86-3-0386	ONT. - RIDEAU CANAL	BEAUPRE ISLAND PLAN IMPLEMENTATION	EC	3
86-3-0388	ONT. - RIDEAU CANAL	CHAFFEY'S-UPPER RIGHT WHARF	EC	3

04/05/87

**INITIAL ASSESSMENT BULLETIN  
FEDERAL ENVIRONMENTAL ASSESSMENT AND REVIEW PROCESS**

PAGE NO. 9

<b>DOC. NO.</b>	<b>LOCATION</b>	<b>PROPOSAL</b>	<b>DEPT</b>	<b>DEC</b>
86-3-0393	ONT. - RIDEAU CANAL	EXTERIOR NARROWS RESTORATION	EC	3
86-3-0392	ONT. - RIDEAU CANAL	GENERAL DREDGING-WASHBURN TO JONES FALLS	EC	3
86-3-0383	ONT. - RIDEAU CANAL	KILMARNOCK CLAY DAM	EC	0
86-3-0391	ONT. - RIDEAU CANAL	KINGSTON MILLS WEIR	EC	3
86-3-0390	ONT. - RIDEAU CANAL	MERRICKVILLE WASTE WEIR 03 & RETAINING WALLS	EC	0
86-3-0387	ONT. - RIDEAU CANAL	NARROWS-LOWER WHARF	EC	0
86-3-0382	ONT. - RIDEAU CANAL	POOMAMALIE-BANK STABILIZATION	EC	9
86-3-0384	ONT. - RIDEAU CANAL	REPAIR BRIDGES	EC	3
86-3-0389	ONT. - RIDEAU CANAL	SMITH FALLS COMBINED WASTE WEIR	EC	0
86-3-0385	ONT. - RIDEAU CANAL	SMITH FALLS PLAN IMPLEMENTATION	EC	3
86-3-0394	ONT. - RIDEAU CANAL	UPPER BREWERS POINT EROSION	EC	0
86-3-0080	ONT. - SARNIA	NEW FIREHALL & MCE. SERVICES BUILDING	TC	2
86-3-0081	ONT. - SAULT STE. MARIE	REPLACE PERIMETER FENCE	TC	2
86-3-0397	ONT. - ST. LAWRENCE ISL. NP	DREDGING SWIMMING AREA MALLORYTOWN LANDING	EC	0
86-3-0398	ONT. - ST. LAWRENCE ISL. NP	IMPROVEMENTS TO VARIOUS ISLANDS	EC	3
86-3-0395	ONT. - ST. LAWRENCE ISL. NP	ISLAND INTERPRETATIVE TRAILS, HILL ISLAND	EC	0
86-3-0399	ONT. - ST. LAWRENCE ISL. NP	ISLAND REHABILITATION OF TRAILS AND CAMPSITES	EC	0
86-3-0082	ONT. - THUNDER BAY	RAMP PROJECT	TC	4
86-3-0083	ONT. - THUNDER BAY	UNDERGROUND FUEL STORAGE AND DISPENSER	TC	3
86-3-0084	ONT. - TIMMINS	PROVIDE PERIMETER/SAFETY FENCE	TC	2
86-3-0085	ONT. - TORONTO ISLAND	ADMN. BUILDING IMPROVEMENTS FOR CONTINUED GEN. AVIAT.	TC	2
86-3-0089	ONT. - TORONTO ISLAND	AIRPORT ZONING, TREE CUTTING & DPW SURVEY NEEDS	TC	2
86-3-0086	ONT. - TORONTO ISLAND	IMPROVE UTILITIES AND SERVICES	TC	2
86-3-0088	ONT. - TORONTO ISLAND	IMPROVEMENTS FOR CONTINUED GEN. AVIATION	TC	2
86-3-0090	ONT. - TORONTO ISLAND	REPLACE MAINTENANCE GARAGE	TC	2
86-3-0087	ONT. - TORONTO ISLAND	UPGRADE WATER SYSTEMS	TC	2
86-3-0092	ONT. - TORONTO-LESTER B. PEARSON	AIRCRAFT DE-ICING/ANTI-ICING PROGRAM	TC	4
86-3-0094	ONT. - TORONTO-LESTER B. PEARSON	AIRSIDE ROAD EXTENSION - C. P. AIR LOT	TC	3
86-3-0097	ONT. - TORONTO-LESTER B. PEARSON	GENERAL AVIATION ACCESS ROAD EXPANSION	TC	3
86-3-0093	ONT. - TORONTO-LESTER B. PEARSON	GENERAL AVIATION SERVICE ROAD CONNECTION	TC	3
86-3-0091	ONT. - TORONTO-LESTER B. PEARSON	INTERNATIONAL SOLID WASTE DISPOSAL	TC	4
86-3-0095	ONT. - TORONTO-LESTER B. PEARSON	NEW AIRSIDE ACCESS AROUND RUNWAY 15/33	TC	3
86-3-0096	ONT. - TORONTO-LESTER B. PEARSON	TERMINAL 3 DEVELOPMENT	TC	4
86-3-0401	ONT. - TRENT-SEVERN CANAL	POLICY PLANNING STUDIES	EC	3
86-3-0400	ONT. - TRENT-SEVERN CANAL	RESOURCE DESCRIPTION AND ANALYSIS	EC	3

04/05/87

**INITIAL ASSESSMENT BULLETIN  
FEDERAL ENVIRONMENTAL ASSESSMENT AND REVIEW PROCESS**

PAGE NO. 10

<b>DOC. NO.</b>	<b>LOCATION</b>	<b>PROPOSAL</b>	<b>DEPT</b>	<b>DEC</b>
86-3-0402	ONT - TRENT-SEVERN CANAL	WETLAND MGMT. PLAN	EC	0
86-3-0098	ONT: - WARTON	EXPAND PUBLIC PARKING	TC	2
86-3-0099	ONT. - WINDSOR	EQUIPMENT GARAGE IMPROVEMENTS	TC	2
86-3-0235	P.E.I. - BALDWIN'S ROAD	WOOD BIOMASS CONVERSION	EMR	2
86-3-0100	P. E. I. - CHARLOTTETOWN	REPLACE FIVE UNDERGROUND FUEL TANKS	TC	3
86-3-0231	P. E. I. - CHARLOTTETOWN	WOOD BIOMASS CONVERSION	EMR	2
86-3-0229	P. E. I. - GLEN WILLIAM	WOOD BIOMASS CONVERSION	EMR	2
86-3-0227	P. E. I. - HUNTER RIVER	WOOD BIOMASS CONVERSION	EMR	2
86-3-0239	P. E. I. - HUNTER RIVER	WOOD BIOMASS CONVERSION	EMR	2
86-3-0234	P. E. I. - MANTAGNE	WOOD BIOMASS CONVERSION	EMR	2
86-3-0233	P. E. I. - MILTON	WOOD BIOMASS CONVERSION	EMR	2
86-3-0236	P. E. I. - MORELL	WOOD BIOMASS CONVERSION	EMR	2
86-3-0230	P.E.I. - PARKDALE	WOOD BIOMASS CONVERSION	EMR	2
86-3-0232	P.E.I. - PARKDALE	WOOD BIOMASS CONVERSION	EMR	2
86-3-0198	P.E.I. - SOURIS (PROJECT A)	CONSTRUCTION NEW MARGINAL WHARF	TC	5
86-3-0199	P. E. I. - SUMMERSIDE	BOAT BASIN DREDGING	TC	5
86-3-0228	P. E. I. - VICTORIA CROSS	WOOD BIOMASS CONVERSION	EMR	2
86-3-0101	QUE. - BAIE COMEAU	DRAINAGE - CITY SIDE	TC	3
86-3-0102	QUE. - BROUGHTON ISLAND	CONSTRUCT AIRPLANE FUEL SUPPLY STATION	TC	3
86-3-0403	QUE. - CAP BON DESIR NHP	CAP BON DESIR	EC	3
86-3-0202	QUE. - CAP-AUX-MEULES	BERTH & BASIN DREDGING	TC	3
86-3-0103	QUE. - DORVAL	AIRCRAFT DE-ICING/ANTI-ICING PROGRAM	TC	4
86-3-0405	QUE. - FORILLON NP	RELOCATION OF PROPANE TANK	EC	3
86-3-0404	QUE. - FORILLON NP	USE OF HERBICIDES FOR CAMPGROUNDS AND TRAILS	EC	0
86-3-0407	QUE. - FORILLON NP	USE OF HERBICIDES ON PETIT-GASPE & LE HAVRE CAMPGROUNDS	EC	3
86-3-0406	QUE. - FORILLON NP	WHALAN WHARF	EC	3
86-3-0104	QUE. - GASPE	INSTALL PURIFYING SYSTEM	TC	3
86-3-0105	QUE. - HAVRE ST. PIERRE	EXTEND RUNWAY	TC	4
86-3-0106	QUE. - KUUSJUAQ	INSTALL FENCE	TC	3
86-3-0107	QUE. - KUUSJUAQ	RELOCATE STEWART LAKE ROAD	TC	2
86-3-0108	QUE. - LA ROMAINE	CONSTRUCT A LANDING PLATFORM AND PONTOON	TC	3
86-3-0408	QUE. - MAURICE NP	RELOCATION OF PRIMITIVE CAMPGROUND NO. 7, LAKE EDOUARD	EC	3
86-3-0409	QUE. - MAURICE NP	RENOVATION OF PRIMITIVE CAMPGROUND NO. 2, LAKE CARIBOU	EC	3
86-3-0410	QUE. - MINGAN NP	CAMPGROUND & PICNIC AREA/NUE DE MINGAN ISLAND-NORTH PT.	EC	3
86-3-0415	QUE. - MINGAN NP	DU FANTOME ISLAND TRAIL	EC	3

**INITIAL ASSESSMENT BULLETIN  
FEDERAL ENVIRONMENTAL ASSESSMENT AND REVIEW PROCESS**

<b>DOC. NO.</b>	<b>LOCATION</b>	<b>PROPOSAL</b>	<b>DEPT</b>	<b>DEC</b>
86-3-0412	QUE. - MINGAN NP	DU HAVRE ISLAND PICNIC AREA/ANSE A PAYOU	EC	3
86-3-0416	QUE. - MINGAN NP	MULTI-PURPOSE MARINA	EC	3
86-3-0411	QUE. - MINGAN NP	PICNIC AREA LE NIAPISKAU ANSE DES BONNE-FEMMES	EC	3
86-3-0414	QUE. - MINGAN NP	PICNIC AREA QUARRY ISLAND PETIT PERCE	EC	3
86-3-0418	QUE. - MINGAN NP	PICNIC AREA, QUARRY ISLAND-ANSE AUX EROSIONS	EC	3
86-3-0417	QUE. - MINGAN NP	PICNIC AREA-PETITE ILE AU MARTEAU ISLAND	EC	3
86-3-0413	QUE. - MINGAN NP	ST. CHARLES PICNIC AREA/HAVRE ST. CHARLES	EC	3
86-3-0110	QUE. - MIRABEL	AIRCRAFT DE-ICING/ANTI-ICING PROGRAM	TC	4
86-3-0109	QUE. - MIRABEL	HANGAR CONSTRUCTION WITH APRON AND TAXIWAY	TC	3
86-3-0111	QUE. - MONT-JOLI	MODIFY AND RELOCATE FUELLING SYSTEM	TC	3
86-3-0112	QUE. - NATASHQUAN	EXTEND RUNWAY	TC	4
86-3-0113	QUE. - NATASHQUAN	SEPTIC TANK, SPREADING FIELD AND WELL	TC	3
86-3-0114	QUE. - POND INLET	IMPROVEMENTS TO MANOEUVERING AREAS	TC	3
86-3-0116	QUE. - QUEBEC	CONSTRUCT DEPOT FOR MAINTENANCE EQUIPMENT	TC	2
86-3-0115	QUE. - QUEBEC	INSTALL HEATING DUCTS FOR MCE. GARAGE	TC	2
86-3-0420	QUE. - R. DES PRAIRIES A CARTIERVILLE	CONSTRUCTION OF A NEW HYDROMETRIC STATION	EC	3
86-3-0419	QUE. - RIVIERE DU CHESNE	REMOVAL OF CONCRETE SUPPORTS OF A DECOMMISSIONED BRIDGE	EC	3
86-3-0117	QUE. - SANIKILVAQ	IMPROVEMENTS TO MANOEUVERING AREAS	TC	3
86-3-0118	QUE. - SCHEFFERVILLE	RELOCATE AND REPLACE FUELLING STATION	TC	3
86-3-0120	QUE. - ST-JEAN	CONSTRUCT ACCESS ROAD, PARKING LOT, MUNICIPAL SERVICES	TC	3
86-3-0121	QUE. - ST-JEAN	EXTEND AND REPAVE RUNWAY 11-29	TC	4
86-3-0119	QUE. - ST-JEAN	SETTING UP GEN. AVIATION ZONE	TC	3
86-3-0122	SASK. - LAC LA RONGE	AIR TERMINAL BUILDING AND FLIGHT SERVICE STATION	TC	2
86-3-0123	SASK. - LANGRUTH	RAMP PROJECT	TC	4
86-3-0124	SASK. - LUSELAND	NEW RUNWAY	TC	4
86-3-0125	SASK. - MELVILLE	CONSTRUCT AND PAVE CROSSWIND RUNWAY	TC	4
86-3-0128	SASK. - NORTH BATTLEFORD	ACCESS ROAD TO HANGAR	TC	2
86-3-0127	SASK. - NORTH BATTLEFORD	REMOVE UNDERGROUND FUEL TANKS	TC	3
86-3-0126	SASK. - NORTH BATTLEFORD	SECURITY FENCE	TC	2
86-3-0421	SASK. - PRINCE ALBERT NP	MANAGEMENT OF SAND AND GRAVEL PITS	EC	0
86-3-0422	SASK. - PRINCE ALBERT NP	PESTICIDE USE GOLF COURSE AND BOWLING GREEN	EC	3
86-3-0423	SASK. - PRINCE ALBERT NP	REHABILITATION OF BACKCOUNTRY TRAILS AND CAMPGROUNDS	EC	0
86-3-0429	SASK. - PRINCE ALBERT NP	SPRUCE RIVER BRIDGE CONSTRUCTION	EC	6
86-3-0428	SASK. - PRINCE ALBERT NP	TOWNSITE RECAPITALIZATION PROJECT NUMBER 1	EC	3
86-3-0426	SASK. - PRINCE ALBERT NP	TOWNSITE RECAPITALIZATION PROJECT NUMBER 2	EC	3

04/05/87

**INITIAL ASSESSMENT BULLETIN  
FEDERAL ENVIRONMENTAL ASSESSMENT AND REVIEW PROCESS**

PAGE NO. 12

<b>OOC. NO.</b>	<b>LOCATION</b>	<b>PROPOSAL</b>	<b>DEPT</b>	<b>DEC</b>
86-3-0427	SASK. - PRINCE ALBERT NP	TOWNSITE RECAPITALIZATION PROJECT NUMBER 4	EC	3
86-3-0425	SASK. - PRINCE ALBERT NP	UNDERGROUND POWER LINE NARROWS CAMPGROUND ALONG HIGHWAY	EC	0
86-3-0424	SASK. - PRINCE ALBERT NP	UNDERGROUND POWER LINE TO MARINA ALONG HIGHWAY	EC	3
86-3-0129	SASK. - REGINA	REPLACE FIRE TRAINING MOCK-UP	TC	4
86-3-0131	SASK. - SASKATOON	EXTEND AND MODIFY EQUIPMENT GARAGE	TC	2
86-3-0130	SASK. - SASKATOON	REPLACE POWERLITE SWITCHGEAR	TC	3
86-3-0458	SCT. SHELF	ODP 01908 - DREDGING	EC	3
86-3-0459	SCT. SHELF	ODP 01911 - DUMPING	EC	3
86-3-0460	SCT. SHELF	ODP 01935 - DREDGING	EC	3
86-3-0461	SCT. SHELF	ODP 01965 - DREDGING	EC	3
86-3-0462	SCT. SHELF	ODP 01966 - DREDGING	EC	3
86-3-0463	SCT. SHELF	ODP 01971 - DUMPING	EC	3
86-3-0464	SCT. SHELF	ODP 01973 - DREDGING	EC	3
86-3-0465	SCT. SHELF	ODP 01974 - DREDGING	EC	3
86-3-0466	SCT. SHELF	ODP 01975 - DREDGING	EC	3
86-3-0467	SCT. SHELF	ODP 01976 - DREDGING	EC	3
86-3-0468	SCT. SHELF	ODP 01977 - DREDGING	EC	3
86-3-0469	SCT. SHELF	ODP 01999 - DREDGING	EC	3
86-3-0470	SCT. SHELF	ODP 02000 - EQUIPMENT DISPOSAL	EC	3
86-3-0471	SCT. SHELF	ODP 02010 - DREDGING	EC	3
86-3-0472	SCT. SHELF	ODP 02016 - DREDGING	EC	3
86-3-0473	SCT. SHELF	ODP 02032 - DREDGING	EC	3
86-3-0474	SCT. SHELF	ODP 02037 - EQUIPMENT DISPOSAL	EC	3
86-3-0475	SCT. SHELF	ODP 02040 - EQUIPMENT DISPOSAL	EC	3
86-3-0476	SCT. SHELF	ODP 02046 - DREDGING	EC	3
86-3-0477	SCT. SHELF	ODP 02047 - DREDGING	EC	3
86-3-0478	SCT. SHELF	ODP 02048 - EQUIPMENT DISPOSAL	EC	3
86-3-0479	SCT. SHELF	ODP 02050 - MABOU HARBOUR #3 CAPE BRETON CO. - DREDGING	EC	3
86-3-0480	SCT. SHELF	ODP 02051 - DUMPING	EC	3
86-3-0481	SCT. SHELF	ODP 02053 - NEW WATERFORD #1 CAPE BRETON CO. - DREDGING	EC	3
86-3-0482	SCT. SHELF	ODP 02062 - DREDGING	EC	3
86-3-0483	SCT. SHELF	ODP 02063 - DREDGING	EC	3
86-3-0484	SCT. SHELF	ODP 02064 - DREDGING	EC	3
86-3-0485	SCT. SHELF	ODP 02065 - EQUIPMENT DISPOSAL	EC	3
86-3-0486	SCT. SHELF	ODP 02068 - DREDGING	EC	3

DOC. NO.	LOCATION	PROPOSAL	DEPT	DEC
86-3-0487	SCT. SHELF	ODP 02069 - DUMPING	EC	3
86-3-0488	SCT. SHELF	ODP 02070 - DREDGING	EC	3
86-3-0489	SCT. SHELF	ODP 02071 - DUMPING	EC	3
86-3-0490	SCT. SHELF	ODP 02074 - DUMPING	EC	3
86-3-0491	SCT. SHELF	ODP 02075 - EQUIPMENT DISPOSAL	EC	3
86-3-0492	SCT. SHELF	ODP 02076 - EQUIPMENT DISPOSAL	EC	3
86-3-0493	SCT. SHELF	ODP 02084 - EQUIPMENT DISPOSAL	EC	3
86-3-0494	SCT. SHELF	ODP 02085 - EQUIPMENT DISPOSAL	EC	3
86-3-0495	SCT. SHELF	ODP 02086 - EQUIPMENT DISPOSAL	EC	3
86-3-0496	SCT. SHELF	ODP 02089 - EQUIPMENT DISPOSAL	EC	3
86-3-0497	SCT. SHELF	ODP 02091 - EQUIPMENT DISPOSAL	EC	3
86-3-0498	SCT. SHELF	ODP 02092 - EQUIPMENT DISPOSAL	EC	3
86-3-0499	SCT. SHELF	ODP 02093 - EQUIPMENT DISPOSAL	EC	3
86-3-0500	ST. LAWRENCE	ODP 01912 - (NB) - DREDGING	EC	3
86-3-0501	ST. LAWRENCE	ODP 01927 - (PEI) - DREDGING	EC	3
86-3-0502	ST. LAWRENCE	ODP 01936 - ANSE-A-BEAUFILS - DREDGING	EC	3
86-3-0503	ST. LAWRENCE	ODP 01937 - ANSE-A-BRILLANT - DREDGING	EC	3
86-3-0504	ST. LAWRENCE	ODP 01938 - BARACHOIS-DE-MALBAIE - DREDGING	EC	3
86-3-0505	ST. LAWRENCE	ODP 01939 - BONAVENTURE - DREDGING	EC	3
86-3-0506	ST. LAWRENCE	ODP 01940 - CARLETON - DREDGING	EC	3
86-3-0507	ST. LAWRENCE	ODP 01941 - CHANDLER - DREDGING	EC	3
86-3-0508	ST. LAWRENCE	ODP 01942 - ETANG-DU-NORD - DREDGING	EC	3
86-3-0509	ST. LAWRENCE	ODP 01943 - GASCONS - DREDGING	EC	3
86-3-0510	ST. LAWRENCE	ODP 01944 - GRANDE-RIVIERE - DREDGING	EC	3
86-3-0511	ST. LAWRENCE	ODP 01945 - GROSSE-ILS - DREDGING	EC	3
86-3-0512	ST. LAWRENCE	QDP 01946 - HAVRE-AUBERT - DREDGING	EC	3
86-3-0513	ST. LAWRENCE	ODP 01947 - HARVRE-AUX-MAISONS(ILS AUX COCHONS) -DREDGING	EC	3
86-3-0514	ST. LAWRENCE	ODP 01948 - ILE D'ENTREE - DREDGING	EC	3
86-3-0515	ST. LAWRENCE	ODP 01949 - MILLERAND - DREDGING	EC	3
86-3-0516	ST. LAWRENCE	ODP 01950 - NEWPORT-POINT - DREDGING	EC	3
86-3-0517	ST. LAWRENCE	ODP 01952 - POINTE-BASSE - DREDGING	EC	3
86-3-0518	ST. LAWRENCE	ODP 01953 - PORT-DANIEL - DREDGING	EC	3
86-3-0519	ST. LAWRENCE	ODP 01954 - RUISSEAU-LEBLANC - DREDGING	EC	3
86-3-0520	ST. LAWRENCE	ODP 01955 - SAINT-GODEFROI - DREDGING	EC	3
86-3-0521	ST. LAWRENCE	ODP 01956 - SAINTE-THERESE - DREDGING	EC	3

04/05/87

**INITIAL ASSESSMENT BULLETIN  
FEDERAL ENVIRONMENTAL ASSESSMENT AND REVIEW PROCESS**

PAGE NO. 14

DOC. NO.	LOCATION	PROPOSAL	DEPT	DEC
86-3-0522	ST. LAWRENCE	ODP 01964 - (PEI) WOOD ISLAND - DREDGING	EC	3
86-3-0523	ST. LAWRENCE	ODP 01967 - (PEI) - DREDGING	EC	3
86-3-0524	ST. LAWRENCE	ODP 01968 - (PEI) - DREDGING	EC	3
86-3-0525	ST. LAWRENCE	ODP 01969 - (PEI) - DREDGING	EC	3
86-3-0526	ST. LAWRENCE	ODP 01970 - (PEI) - DREDGING	EC	3
86-3-0527	ST. LAWRENCE	ODP 01979 - (NB) - DREDGING	EC	3
86-3-0528	ST. LAWRENCE	ODP 01980 - (PEI) - DREDGING	EC	3
86-3-0529	ST. LAWRENCE	ODP 01986 - (PEI) - DREDGING	EC	3
86-3-0530	ST. LAWRENCE	ODP 01988 - (PEI) - DREDGING	EC	3
86-3-0531	ST. LAWRENCE	ODP 01989 - (PEI) - DREDGING	EC	3
86-3-0532	ST. LAWRENCE	ODP 01990 - (PEI) - DREDGING	EC	3
86-3-0533	ST. LAWRENCE	ODP 01991 - (PEI) - DREDGING	EC	3
86-3-0534	ST. LAWRENCE	ODP 01992 - (PEI) - DREDGING	EC	3
86-3-0535	ST. LAWRENCE	ODP 01993 - (PEI) - DREDGING	EC	3
86-3-0536	ST. LAWRENCE	ODP 01994 - (PEI) - DREDGING	EC	3
86-3-0537	ST. LAWRENCE	ODP 01995 - (PEI) - DREDGING	EC	3
86-3-0573	ST. LAWRENCE	ODP 01995 - (PEI) - DREDGING	EC	3
86-3-0574	ST. LAWRENCE	ODP 01996 - (PEI) - DREDGING	EC	3
86-3-0575	ST. LAWRENCE	ODP 01997 - (PEI) - DREDGING	EC	3
86-3-0576	ST. LAWRENCE	ODP 01998 - (PEI) - DREDGING	EC	3
86-3-0577	ST. LAWRENCE	ODP 02008 - (PEI) - DREDGING	EC	3
86-3-0578	ST. LAWRENCE	ODP 02009 - (NB) - DREDGING	EC	3
86-3-0579	ST. LAWRENCE	ODP 02011 - (NB) - DREDGING	EC	3
86-3-0580	ST. LAWRENCE	ODP 02013 - (NB) - DREDGING	EC	3
86-3-0581	ST. LAWRENCE	ODP 02014 - (NB) - DREDGING	EC	3
86-3-0582	ST. LAWRENCE	ODP 02015 - (NB) - DREDGING	EC	3
86-3-0583	ST. LAWRENCE	ODP 02029 - (NB) - DREDGING	EC	3
86-3-0584	ST. LAWRENCE	ODP 02030 - (NB) - DREDGING	EC	3
86-3-0585	ST. LAWRENCE	ODP 02031 - (NB) - DREDGING	EC	3
86-3-0586	ST. LAWRENCE	ODP 02052 - (NB) - DREDGING	EC	3
86-3-0587	ST. LAWRENCE	ODP 02066 - (NB) - DREDGING	EC	3
86-3-0588	ST. LAWRENCE	ODP 02071 - (NB) - DUMPING	EC	3
86-3-0538	W. COAST	ODP 01814 - MALCOLM ISLAND - DREDGING	EC	3
86-3-0539	W. COAST	ODP 01846 - LAMBERT CHANNEL, HORNBY ISLAND - EQUIPMENT	EC	3
86-3-0540	W. COAST	ODP 01864 - NORTH PACIFIC DUMP SITE - DUMPING	EC	3

04/05/87

**INITIAL ASSESSMENT BULLETIN  
FEDERAL ENVIRONMENTAL ASSESSMENT AND REVIEW PROCESS**

PAGE NO. 15

DOC. NO.	LOCATION	PROPOSAL	DEPT	DEC
86-3-0541	W. COAST	ODP 01896 - POINT GREY - DREDGING	EC	3
86-3-0542	W COAST	ODP 01981 - KITIMAT ARM - DREDGING	EC	3
86-3-0543	W COAST	ODP 01983 - BURRARD INLET, REED POINT - DREDGING	EC	3
86-3-0544	W COAST	ODP 01984 - POINT GREY - DREDGING	EC	3
86-3-0545	W COAST	ODP 02002 - SANDHEADS - DREDGING	EC	3
86-3-0546	W COAST	ODP 02003 - POINT GREY - DREDGING	EC	3
86-3-0547	W COAST	ODP 02004 - JOHNSTONE STRAIT -HICKEY POINT - DREDGING	EC	3
86-3-0548	W COAST	ODP 02017 - WATTS POINT - DREDGING	EC	3
86-3-0549	W COAST	ODP 02018 - POINT GREY - DUMPING	EC	3
86-3-0550	W COAST	ODP 02019 - PORLIER PASS - DREDGING	EC	3
86-3-0551	W COAST	ODP 02020 - POINT GREY - DREDGING	EC	3
86-3-0552	W COAST	ODP 02021 - MALASPINA STRAIT - DREDGING	EC	3
86-3-0553	W COAST	ODP 02022 - POINT GREY - DREDGING	EC	3
86-3-0554	W COAST	ODP 02023 - STRAIT OF GEORGIA - DUMPING	EC	3
86-3-0555	W COAST	ODP 02024 - POINT GREY DUMPSITE - DREDGING	EC	3
86-3-0556	W COAST	ODP 02025 - MUCHALAT, ELIZA, TAH SIS - DREDGING	EC	3
86-3-0557	W COAST	ODP 02026 - VICTORIA - DREDGING	EC	3
86-3-0558	W COAST	ODP 02041 - POINT GREY - DREDGING	EC	3
86-3-0559	W COAST	ODP 02042 - WATTS - DREDGING	EC	3
86-3-0560	W COAST	ODP 02043 - VANCOUVER HARBOUR - BURNING	EC	3
86-3-0561	W COAST	ODP 02044 - PORT ALBERNI - DREDGING	EC	3
86-3-0562	W COAST	ODP 02045 - POINT GREY - DREDGING	EC	3
86-3-0563	W COAST	ODP 02058 - POINT GREY - DREDGING	EC	3
86-3-0564	W COAST	ODP 02059 - VICTORIA - DREDGING	EC	3
86-3-0565	W COAST	ODP 02060 - POINT GREY - DREDGING	EC	3
86-3-0566	W COAST	ODP 02061 - POINT GREY - DREDGING	EC	3
86-3-0567	W COAST	ODP 02078 - POINT GREY - DREDGING	EC	3
86-3-0568	W COAST	ODP 02079 - DREDGING	EC	3
86-3-0569	W COAST	ODP 02080 - CAPE MUDGE - DREDGING	EC	3
86-3-0570	W COAST	ODP 02081 - POINT GREY - DREDGING	EC	3
86-3-0571	W COAST	ODP 02098 - PORT ALICE - DREDGING	EC	3
86-3-0572	W COAST	ODP 02099 - PORLIER PASS - DREDGING	EC	3
86-3-0213	Y. T. - B. C. - HAINES JCT. - ALASKA	PIPELINE-SALVAGE	INAC	3
86-3-0440	Y. T. - BIG CR.	HYDROMETRIC STATION CONSTRUCTION	EC	3
86-3-0436	Y. T. - BLACKSTONE RIVER	HYDROMETRIC STATION MAINTENANCE	EC	3



04/05/87

**INITIAL ASSESSMENT BULLETIN  
FEDERAL ENVIRONMENTAL ASSESSMENT AND REVIEW PROCESS**

PAGE NO. 16

<b>DOC. NO.</b>	<b>LOCATION</b>	<b>PROPOSAL</b>	<b>DEPT</b>	<b>DEC</b>
86-3-0437	Y.T. - BONNET PLUME RIVER	HYDROMETRIC STATION RECONSTRUCTION	EC	3
86-3-0212	Y.T. - CARCROSS-SKAGWAY HWY.	EXISTING-UPGRADE	INAC	3
86-3-0208	Y.T. - FARO	ACCESS-NEW	INAC	0
86-3-0209	Y.T. - FARO	MINE DEVELOPMENT	INAC	0
86-3-0441	Y.T. - FIRTH RIVER	HYDROMETRIC STATION UPGRADING	EC	3
86-3-0439	Y.T. - IBEX RIVER	HYDROMETRIC STATION CONSTRUCTION	EC	3
86-3-0210	Y.T. - KETZA RIVER	ACCESS-PROPOSED ROUTE CHANGE	INAC	0
86-3-0211	Y.T. - KETZA RIVER	MINE & TAILINGS POND	INAC	4
86-3-0431	Y.T. - KLUANE NP	AURIOL TRAIL ADDITION	EC	3
86-3-0430	Y.T. - KLUANE NP	COTTONWOOD TRAIL REALIGNMENT	EC	3
86-3-0432	Y.T. - KLUANE NP	KATHLEEN LAKE BAY USE AREA DEVELOPMENT	EC	3
86-3-0433	Y.T. - KLUANE NP	KATHLEEN LAKE SANITARY DUMP STATION	EC	3
86-3-0443	Y.T. - MACMILLAN RIVER	HYDROMETRIC STATION NEW BOOM GUAGE	EC	3
86-3-0053	Y.T. - MAYO	DRAINAGE DITCH IMPROVEMENTS	TC	2
86-3-0214	Y.T. - NORTH YUKON	NORTH WARNING SYSTEM	INAC	4
86-3-0435	Y.T. - PORCUPINE RIVER	HYDROMETRIC STATION CONSTRUCTION	EC	3
86-3-0444	Y.T. - ROSS RIVER	HYDROMETRIC STATION REBUILD CABLEWAY	EC	3
86-3-0438	Y.T. - SNAG CR	HYDROMETRIC STATION CONSTRUCTION	EC	3
86-3-0612	Y.T. - TAKAHINI RIVER	HYDROMETRIC DISMANTLE	EC	3
86-3-0132	Y.T. - WATSON LAKE	EQUIPMENT STORAGE BUILDING	TC	2
86-3-0442	Y.T. - WHITE RIVER	HYDROMETRIC STATION CONSTRUCTION	EC	3
86-3-0215	Y.T. - WHITEHORSE	COAL MINE	INAC	0
86-3-0134	Y.T. - WHITEHORSE	SAND STORAGE BUILDING	TC	2
86-3-0133	Y.T. - WHITEHORSE	TRADE SHOP	TC	2
86-3-0434	Y.T. - YUKON RIVER	HYDROMETRIC STATION UPGRADING	EC	3

Department names in this issue of the Bulletin are abbreviated as follows:

TC = Transport Canada

PWC = Public Works Canada

EC = Environment Canada

CIDA = Canadian International Development Agency

ND = National Defence

EMR = Energy, Mines &amp; Resources Canada

INAC = Indian and Northern Affairs Canada

ODP = Offshore Dumping permits