

**BULLETIN
OF
INITIAL ASSESSMENT DECISIONS**

**UNDER
THE FEDERAL ENVIRONMENTAL ASSESSMENT AND REVIEW PROCESS**

EDITION 3

January 1, 1987 - March 31, 1987

INTRODUCTION

Initial assessment is part of the federal Environmental Assessment and Review Process (EARP) which is used to implement Government policy on environmental assessment. Initial assessment helps determine the potential environmental and directly related social implications of proposals for which the government has a decision-making responsibility. This Bulletin contains summaries of decisions about proposals made as a result of initial assessment,

EARP is to be used early in planning before irrevocable decisions or actions are taken. Guidelines on this policy were issued by Order in Council June 21, 1984.

This Guidelines Order applies to all federal departments, boards, agencies. Parent corporations are expected to make this part of their corporate policy unless this is not possible within the legislative authority of the corporation. The Order also applies to agencies that deal with regulation of certain activities unless this would cause a duplication of procedures or legislation does not permit their decisions to be based on environmental factors. In this publication all these are referred to as departments.

EARP consists of two possible phases: initial assessment and public review. This Bulletin deals with the decisions arising from the first phase. It is published quarterly by the Federal Environmental Assessment Review Office (FEARO) and is supplementary to the "Initial Assessment Guide" to EARP (also published by FEARO) that provides federal departments with procedural guidelines for the initial environmental assessment of proposals.

INITIAL ASSESSMENT

Initial assessment is used when a department intends to undertake any proposal of its own. It is also used when a department has the authority to make a decision about a proposal of another organization that:

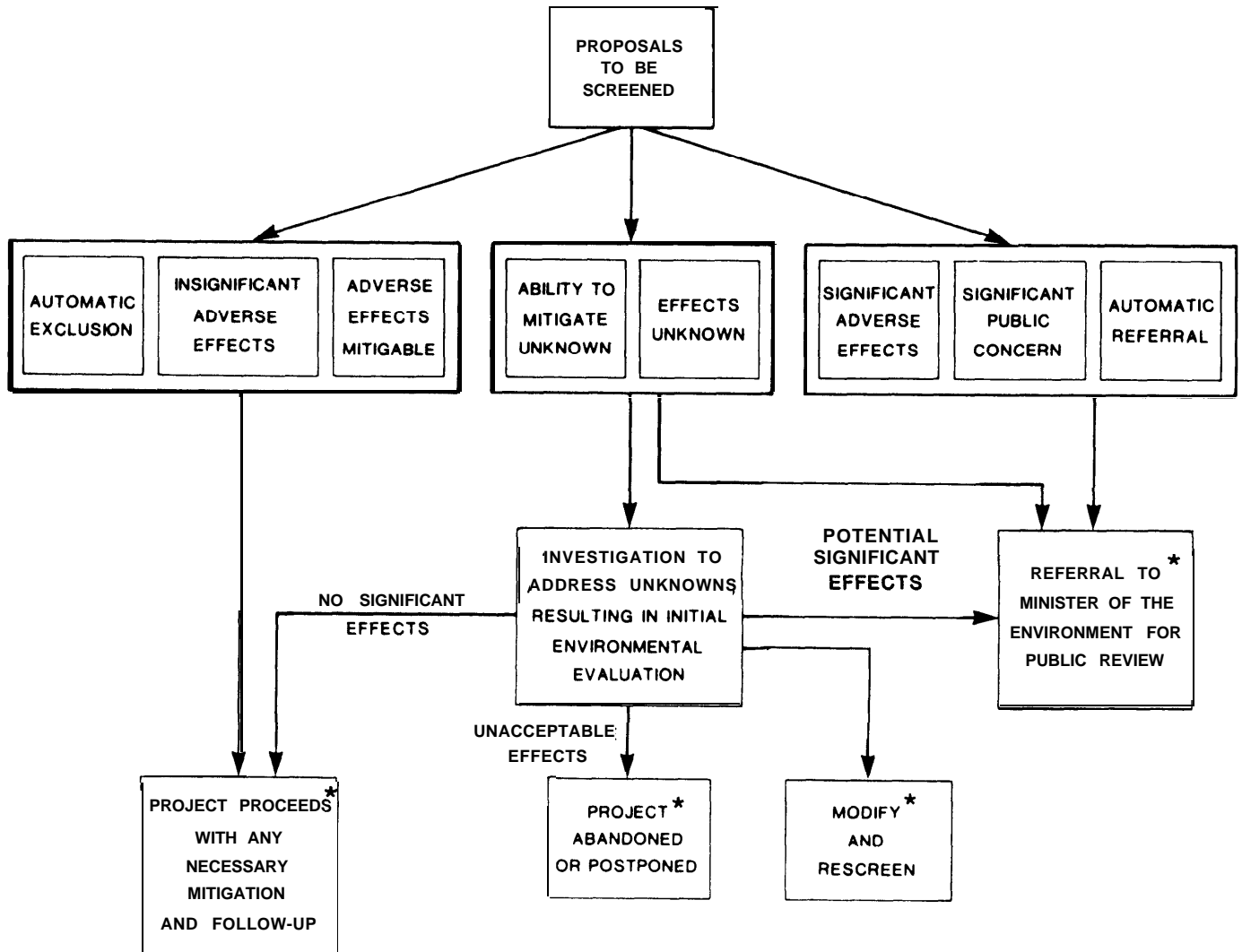
- might have an effect on federal Government responsibility;
- would require federal Government financial commitment;
- or,
- would be undertaken on lands administered by the federal Government, including those offshore.

Initial assessment starts with an environmental screening by a department to determine the potential environmental and directly related social effects of a proposal; that is, effects that could bring adverse changes to the natural environmental and effects that these changes could have on people. Screening may lead to additional study that results in a detailed document called an Initial Environmental Evaluation (IEE). This document is described in more detail on page 4 of the "Initial Assessment Guide" published by FEARO for departments to use during initial assessment. Its place in initial assessment can be seen in the diagram on page 4 of this Bulletin, which is taken from the Guide.

As a result of assessment, a department makes a decision about the environmental significance of a proposal. In this Bulletin each proposal listed has been assigned a number indicating what decision was taken. These decisions are described on page 5 in the section "How To Use This Bulletin." Eight decisions in that list are the same as those described on page 4 of the "Initial Assessment Guide." There are two additional numbers: 0 -to indicate that initial assessment of the proposal has started but no decision has been taken and 10 -to indicate that the proposal is to be carried out in another country under the auspices of the Canadian International Development Agency and although an environmental impact statement may be produced, there may be no public review by an independent panel.

Two of the decisions may be made immediately: automatic exclusion from study or automatic referral to the Minister of the Environment for a public review by an independent panel. Excluded proposals are those that would not produce any adverse environmental effects, such as routine maintenance. Automatic referrals are made for proposals that potentially could produce significant adverse environmental effects. Automatic exclusions or referrals are usually based on lists prepared by departments in co-operation with FEARO.

INITIAL ASSESSMENT



How to Use This Bulletin

The list in this bulletin consists of four columns of information:
LOCATION – PROPOSAL – DEPARTMENT – DECISION

Location

Locations are listed by province first and locality second, for example, ALTA.-Banff Park. Two other designations are used: offshore and international.

Provinces and territories are abbreviated as follows:

NFLD.	Newfoundland
N.B.	New Brunswick
QUE.	Quebec
MAN.	Manitoba
ALTA.	Alberta
Y.T.	Yukon Territory
P.E.I.	Prince Edward Island
N.S.	Nova Scotia
ONT.	Ontario
SASK.	Saskatchewan
B.C.	British Columbia
N.W.T.	Northwest Territories

Offshore designations are:

Gr. Banks	Grand Banks Offshore
	Labrador
Sct. Shelf	Scotian Shelf
H. Bay	Hudson Bay
B. Sea	Beaufort Sea
St. Lawrence	Gulf of St. Lawrence
Geo. Bank	Georges Bank
Arc. Is.	Arctic Islands
W. Coast	Offshore West Coast

The designation for proposals outside of Canada is Int. - International.

Proposal

Each proposal is described first from its largest to its smallest components in descending order, and second, by the action, for example, AIRPORT RUNWAY-EXTEND.

Department

Department means any department, board or agency and any parent corporation of the Government of Canada.

Decisions

Initial assessment decisions about proposals are listed as numbers and for the most part, are the same decisions as

those listed on page 4 of the "Initial Assessment Guide". Number 0, however, is not a decision; rather, it indicates that the initial assessment of the proposal has begun and no decision has been made as yet. One of the outcomes of initial assessment may be an automatic exclusion of a proposal from study. Exclusions are not included in this Bulletin but information about them may be obtained from departments. Decisions designated as Number 10, indicating the proposal is to be implemented in another country through CIDA, are not in the Guide but are in this Bulletin.

0 - initial assessment starting - no decision yet;

1 - automatically exclude proposal from study as a type that would not produce any adverse environmental effects, (NOT listed in this Bulletin);

2 - proceed with proposal because there are no significant adverse effects;

3 - proceed with proposal because the potentially adverse impacts may be mitigated with known technology;

4 - assess the proposal in greater detail (Initial Environmental Evaluation-IEE) because the adverse effects that might be caused by the proposal are unknown;

5 - give the proposal further study (IEE) because the ability to mitigate adverse effects is unknown;

6 - refer the proposal to the Minister of the Environment for a public review by a panel because the potential adverse impacts are significant;

7 - refer the proposal to the Minister of the Environment for a public review because public concern about it is such that a review is desirable;

8 - automatically refer the proposal to the Minister of the Environment for a public review as a type that potentially could produce significant environmental effects.

9 - either modify the proposal and rescreen it or abandon it because the impacts are unacceptable.

10 - production of an Environmental Impact Statement at request of the Canadian International Development Agency because potential adverse impacts are significant (CIDA)

To Obtain More Information on Any Proposal

The list of proposals is a summary meant to identify, in a few key words, proposals that have entered the process. It is not intended to provide a complete description nor be the sole source for information about such proposals. More detail about any proposal, as well as lists of automatic exclusions and automatic referrals, is retained by the department concerned. Requests for additional information -available in either official language- should be made to the appropriate departmental contact listed at the end of this bulletin.

FEAR0 staff are also available for advice. Write or telephone collect to:

13th Floor	750 Cambie Street
Fontaine Building	Vancouver, B.C.
Hull, Quebec	V6B 2P2
K1A OH3	

(819) 997-1000	(604) 666-243 1
----------------	-----------------

Publications Available From FEAR0

- Environmental Assessment and Review Process Guidelines Order
- Initial Assessment Guide Federal Environmental Assessment and Review Process
- Environmental Assessment Panels: Procedures and Rules for Public Meetings
- Register of Panel Projects (including a list of Panel reports)

DEPARTMENTAL CONTACTS

For more information about the proposals in this bulletin or about proposals excluded from study, please contact the appropriate departmental representative listed below or the department regional office in your area.

Mr. Duncan Hardie
Environmental Protection Branch
Canada Oil & Gas Lands
Administration
Tower "B", 15th Floor, 355 River Road
Vanier, Ontario
K1A OE4
Tel: (613) 991-1917

Mr. Philip J. Paradine
Environmental Advisor
Natural Resources Division
Canadian International Development Agency
Place du Portage
Phase II, 7th Floor
Hull, Quebec
K1A OG4
Tel: (819) 997-6731

Dr. J. D. McTaggart-Cowan
Director
Office of Environmental Affairs
Department of Energy, Mines & Resources
580 Booth Street, 28th Floor, Rm 2030
Ottawa, Ontario
K1A OE4
Tel: (613) 992-9924

Mr. R.H. Weir
Chief
Environmental Impact Systems Division
Environment Canada
Place Vincent Massey, 15th Floor
351 St. Joseph Blvd.
Hull, Quebec
K1A 1C8
Tel: (819) 997-1731

Mr. E.K. Langtry
A/Director
Northern Environmental Protection Directorate
Northern Affairs Program
Department of Indian Affairs & Northern
Development
Terrasses de la Chaudière
10 Wellington Street, North Tower, 6th Floor
Hull, Quebec
K1A OH4
Tel: (819) 997-9090

Mr. Glen Bloodworth
Director
Indian Environmental Protection Branch
Lands, Revenues and Trusts
Department of Indian Affairs & Northern
Development
Terrasses de la Chaudière
10 Wellington Street, North Tower, Room 2037
Hull, Quebec
K1A OH4
Tel: (819) 997-8424

Mr. A.T. Downs, Director
Conservation & Environment
General Works
Department of National Defence
9th Floor, Centre Block North
101 Colonel By Drive
Ottawa, Ontario
K1A OK2
Tel: (613) 995-4154

Mr. S. Hamill
Chief, Conservation
Property Branch
National Capital Commission
161 Laurier Ave. W.
Ottawa, Ontario
K1P 6J6
Tel: (613) 996-1811

Mr. SK. McNeely
Design Effectiveness
Program Affairs
Department of Regional
Industrial Expansion
8th Floor E.
235 Queen Street
Ottawa, Ontario
K1A OH5
Tel: (613) 954-5555

Ms. Marie-Helene Le Coq
Planning and Co-ordination
Intergovernmental & Industry Relations (ACCC)
Transport Canada

26A, Tower C, Place de Ville
330 Sparks Street
Ottawa, Ontario
K1A 0N5

Tel: (613) 991-6505

**INITIAL
ASSESSMENT
BULLETIN**

INITIAL ASSESSMENT BULLETIN
FEDERAL ENVIRONMENTAL ASSESSMENT AND REVIEW PROCESS

PAGE NO. 1

DOC. NO.	LOCATION	PROPOSAL	DEPT	DEC
86-3-0003E	ALTA. - CALGARY	AIRCRAFT DE-ICING/ANTI-ICING PROGRAM	TC	4
86-4-0012E	ALTA. - CALGARY	COMBINED SERVICES DEVELOPMENT	TC	3
86-4-0002E	ALTA. - CALGARY	CONCRETE PAD ATCO RCMP OFFICE	TC	2
86-3-0001E	ALTA. - CALGARY	CONSTRUCT WASHROOM AT TAXI/BUS BULLPEN	TC	2
86-4-0006E	ALTA. - CALGARY	IMPROVE BOMB DISPOSAL PIT	TC	2
86-4-0003E	ALTA. - CALGARY	INSTALL PAVEMENT FROST WARNING SYSTEM	TC	2
86-4-0010E	ALTA. - CALGARY	NEW CARGO BUILDING	TC	3
86-3-0004E	ALTA. - CALGARY	OPERATIONS BUILDING/CONTROL TOWER	TC	2
86-4-0008E	ALTA. - CALGARY	REHABILITATE RUNWAY 16/34	TC	2
86-4-0009E	ALTA. - CALGARY	REMOTE CAR PARK	TC	3
86-4-0007E	ALTA. - CALGARY	REPLACE LIAL RUNWAY 25	TC	2
86-4-0005E	ALTA. - CALGARY	RESTORE TAXI 'A' NORTH OF 10/28	TC	2
86-4-0004E	ALTA. - CALGARY	RESTORE TAXIWAY X	TC	2
86-4-0013E	ALTA. - CALGARY	SHELTER FOR BAGGAGE INSPECTION BUILDING	TC	2
86-3-0002E	ALTA. - CALGARY	STORM DRAINAGE PHASE II, McTAVISH ROAD	TC	3
86-4-0011E	ALTA. - CALGARY	UPGRADE FIRE TRAINING SITE	TC	3
86-4-0001E	ALTA. - CALGARY	UPGRADE ILLUMINATED SIGNAGE AIRSIDE	TC	2
86-3-0005E	ALTA. - EDMONTON	AIRCRAFT DE-ICING/ANTI-ICING PROGRAM	TC	4
86-2-0088E	ALTA. - EDMONTON	RENOVATE ADMIN. BUILDING	TC	3
86-3-0006E	ALTA. - EDMONTON	STORM DRAINAGE IMPROVEMENTS	TC	2
86-3-0007E	ALTA.-ERO NORTH	SECURITY FENCE	TC	2
86-3-0008E	ALTA.-ERO SOUTH	SECURITY FENCE	TC	2
86-4-0054E	ALTA. - FORT FITZGERALD	WING WALL CONST. & BERTH EXCAVATION	TC	2
86-3-0009E	ALTA. - FORT NORMAN	SAFETY/BOUNDARY FENCE	TC	2
86-4-0080E	ALTA. - FOX LAKE, FORT CHI PEWYAN	DEMONSTRATION HOMES	EMR	2
86-4-0014E	ALTA. - FT. MCMURRAY	LANDFILLING, RELOCATE POWERLINE	TC	2
86-3-0010E	ALTA. - GRANDE PRAIRIE	NEW ENTRANCE ROAD	TC	2
86-3-0011E	ALTA. - LETHBRIDGE	SAND STORAGE BUILDING	TC	2
86-3-0012E	ALTA. - PEACE RIVER	NEW FIREHALL	TC	2
86-3-0013E	ALTA. - SPRINGBANK	SAND STORAGE BUILDING	TC	2
86-3-0014E	ALTA. - VILLENEUVE	SAND STORAGE BUILDING	TC	2
86-4-0017E	B. C. - ABBOTSFORD	CONSTRUCT COMBINED SERVICE BUILDING	TC	2
86-4-0015E	B. C. - ABBOTSFORD	DRAINAGE OF NORTH APRON	TC	2
86-4-0016E	B. C. - ABBOTSFORD	FUEL SPILL CONTAINMENT FACILITY	TC	2
86-3-0015E	B. C. - ABBOTSFORD	UPGRADE CFR TRAINING AREA	TC	4
86-3-0016E	B. C. - CAMPBELL RIVER	PERMANENT FLIGHTWAY CLEARING	TC	2

INITIAL ASSESSMENT BULLETIN
FEDERAL ENVIRONMENTAL ASSESSMENT AND REVIEW PROCESS

PAGE NO. 2

DOC. NO.	LOCATION	PROPOSAL	DEPT	DEC
86-4-0018E	B. C. - CRANBROOK	CFR ACCESS ROAD CONSTRUCTION	TC	2
86-3-0017E	B. C. - CRANBROOK	FIREHALL ACCESS ROADS AND PARKING LOT	TC	2
86-3-0019E	B. C. - DAWSON CREEK	REPAIR UNDERGROUND FUEL TANKS	TC	2
86-3-0018E	B. C. - DAWSON CREEK	SAND/UREA STORAGE BUILDING	TC	2
86-3-0020E	B. C. - FORT ST. JOHN	NEW FEC/IPU	TC	2
86-2-0075E	B. C. - FRASER LAKE	PAVE GRAVEL RUNWAY	TC	4
86-4-0079E	B. C. - HOUPSITAS & KYUQUOT	SMALL HYDRO DEVELOPMENT	EMR	2
86-3-0021E	B. C. - KAMLOOPS	UPGRADE CFR TRAINING AREA	TC	4
86-2-0076E	B. C. - NAKUSP	RUNWAY EXTENSION	TC	4
86-3-0022E	B. C. - PAT BAY	DREDGING OF SEA PLANE BASE	TC	3
86-2-0077E	B. C. - PORT HARDY	DRAINAGE DITCH RESTORATION AND CONSTRUCTION	TC	2
86-3-0023E	B. C. - PORT HARDY	UPGRADE CFR TRAINING AREA	TC	4
86-2-0078E	B. C. - PRINCE RUPERT	RECONSTRUCT WHARF	TC	2
86-4-0019E	B. C. - QUENSEL	REHABILITATE APRON ACCESS	TC	2
86-3-0024E	B. C. - QUESNEL	RELOCATE/UPGRADE CFR TRAINING AREA	TC	4
86-3-0025E	B. C. - SANDSPIT	BUILD FIRE TRAINING AREA	TC	4
86-3-0026E	B. C. - SMITHERS	CONSTRUCT CFR ACCESS ROAD SOUTH END	TC	2
86-2-0082E	B. C. - VANCOUVER	AIRFIELD DRAINAGE IMPROVEMENTS	TC	2
86-3-0029E	B. C. - VANCOUVER	CHANNEL ENLARGEMENTS/NEW CULVERTS EAST	TC	3
86-2-0080E	B. C. - VANCOUVER	DRAINAGE FLOODBOXES PUMPING STATION	TC	3
86-2-0081E	B. C. - VANCOUVER	DRAINAGE IMPROVEMENTS TO NORTH SEA ISLAND	TC	2
86-2-0083E	B. C. - VANCOUVER	DRAINAGE REHAB. & REBUILD COWLEY CRES.	TC	2
86-3-0028E	B. C. - VANCOUVER	DYKE RESTORATION PROGRAM	TC	3
86-3-0027E	B. C. - VANCOUVER	RESTORATION OF FIRE TRAINING AREA (REMOVED FROM CAP)**	TC	3
86-2-0086E	B. C. - VANCOUVER	RESTORATION OF SEAPLANE FACILITIES	TC	3
86-3-0030E	B. C. - VICTORIA	EXTEND TAXI 'K' FROM RUNWAY 08-26 TO TAXI 'E'	TC	2
86-3-0031E	B. C. - WILLIAMS LAKE	DEVELOP TAXIWAY	TC	2
86-4-0109E	INT. - EGYPT	COMMODITY SUPPORT FOR STRUCTURAL ADJUSTMENT	CIDA	2
86-4-0110E	INT. - GHANA	EQUIPMENT/SERVICES PROVISION FOR TRANSMISSION LINE	CIDA	2
86-4-0116E	INT. - JORDAN	DEVELOPMENT OF MULTIPURPOSE JETTY	TC	3
86-4-0112E	INT. - KENYA	CARE CANADA RURAL INTEGRATED COMMUNITY DEVELOPMENT	TC	2
86-4-0111E	INT. - KENYA	JOINT ENERGY MISSION TO IDENTIFY PROJECT PROPOSALS	CIDA	2
86-4-0114E	INT.-MEXICO	HOUSING AND RESETTLEMENT AFTER EARTHQUAKE	TC	2
86-4-0115E	INT.-MEXICO	NGO EARTHQUAKE REHABILITATION COMMITTEE	TC	2
86-4-0117E	INT. - SENEGAL	RURAL FORESTRY TO COMBAT DESERTIFICATION	CIDA	7
86-4-0113E	INT. - THAI LAND	FOOD PROCESSING TECHNICAL PROJECT	TC	2

INITIAL ASSESSMENT BULLETIN
FEDERAL ENVIRONMENTAL ASSESSMENT AND REVIEW PROCESS

PAGE NO. 3

DOC. NO.	LOCATION	PROPOSAL	DEPT	DEC
86-2-0094E	MAN. - BRANDON	CONSTRUCT FIRE TRAINING SITE, MOCKUP & PIPING	TC	4
86-3-0032E	MAN. - BRANDON	FIELD ELECTRICAL CENTRE	TC	3
86-3-0033E	MAN. - BRANDON	SAND STORAGE BUILDING	TC	2
86-3-0036E	MAN. - CHURCHILL	AIR TERMINAL BUILDING	TC	2
86-3-0037E	MAN. - CHURCHILL	CRASH FIRE TRAINING	TC	4
86-3-0035E	MAN. - CHURCHILL	OFF-OIL TO ELECTRIC	TC	3
86-3-0034E	MAN. - CHURCHILL	REPLACE POWERLITE SWITCHGEAR	TC	3
86-2-0095E	MAN. - DAUPHIN	REHAB. TAXI "C"	TC	1
86-3-0038E	MAN. - FLIN FLON	REPLACE 2-BURIED AND 1-ABOVE GROUND TANKS	TC	3
86-3-0039E	MAN. - GILLAM	AIRPORT TERMINAL BUILDING	TC	2
86-3-0040E	MAN. - LYNN LAKE	CRASH FIRE TRAINING AREA	TC	4
86-3-0076E	MAN. - MORDEN	MODERNIZE/EXPAND PLANT KITCHEN/VANITY CABINETS	DRIE	3
86-3-0078E	MAN. - SELKIRK	ESTABLISH MANUFACTURE-COLOUR CARDS-COATINGS INDUSTRY	DRIE	3
86-3-0042E	MAN. - ST. ANDREWS	IMPROVE OIL SEPARATOR	TC	3
86-3-0041E	MAN. - ST. ANDREWS	REPLACE UNDERGROUND DIESEL AND GAS STORAGE TANKS	TC	3
86-2-0096E	MAN. - THOMPSON	NORTH SIDE DEVELOPMENT	TC	3
86-3-0043E	MAN. - WINNIPEG	AIRCRAFT DE-ICING/ANTI-ICING	TC	4
86-4-0022E	MAN. - WINNIPEG	APRON 1 RECONSTRUCTION (ON-GOING PHASE 3)	TC	2
86-3-0044E	MAN. - WINNIPEG	CONSTRUCTION OF INNER PERIMETER SECURITY ROAD	TC	2
86-3-0068E	MAN. - WINNIPEG	MACDONALD BUILDING RENOVATION	PWC	2
86-3-0077E	MAN. - WINNIPEG	MODERNIZE/EXPAND REBUILD-AUTO-AIRCRAFT & RAIL PRODUCTS	DRIE	3
86-3-0079E	MAN. - WINNIPEG	MODERNIZE/EXPAND-MANUFACTURE-COATINGS & SEALANTS	DRIE	3
86-3-0080E	MAN. - WINNIPEG	MODERNIZE/EXPANSION REPAIR & OVERHAUL-AIRCRAFT ENGINES	DRIE	3
86-4-0021E	MAN. - WINNIPEG	RESTORATION OF RUNWAY 07-25	TC	2
86-4-0020E	MAN. - WINNIPEG	TERMINAL ROADWAY MODIFICATION (1ST STAGE)	TC	2
86-2-0131E	N. B. - MONCTON	CLEARING APPROACHES ON VARIOUS AP SITES	TC	3
86-3-0092E	N. S. - AMHERST	MODERNIZE CONCRETE PRODUCTS PLANT	DRIE	3
86-4-0077E	N. S. - ANNAPOLIS ROYAL	REPLACE STEEL SHEET PILE WHARF FACE	TC	3
86-3-0090E	N. S. - BRIDGETOWN	MODERNIZE CONCRETE PRODUCTS FACILITY	DRIE	3
86-3-0093E	N. S. - BRIDGEWATER	MODERNIZE PLANT FOR REBUILDING ELEC MOTORS/GENERATORS	DRIE	3
86-3-0101E	N. S. - ECONOMY	EXPAND LOG HOME FACILITY	DRIE	3
86-3-0097E	N. S. - GREENWICH	ESTABLISH HIGH PRESSURE AGRICULTURAL PUMPS PLANT	DRIE	3
86-3-0047E	N. S. - HALIFAX	AIRCRAFT DE-ICING/ANTI-ICING PROGRAM	TC	4
86-4-0050E	N. S. - HALIFAX	BARNES DR. EXTENSION	TC	4
86-4-0052E	N. S. - HALIFAX	CONSTRUCT BERM & ROADWAY	TC	2
86-3-0046E	N. S. - HALIFAX	COVER PYRITIC SHALE	TC	3

INITIAL ASSESSMENT BULLETIN
FEDERAL ENVIRONMENTAL ASSESSMENT AND REVIEW PROCESS

PAGE NO. 4

DOC. NO.	LOCATION	PROPOSAL	DEPT	DEC
86-3-0048E	N. S. - HALI FAX	EXPAND APRON SOUTHWARD	TC	3
86-3-0049E	N. S. - HALI FAX	INCREASE SHORT TERM METERED PARKING	TC	2
86-4-0053E	N. S. - HALI FAX	PREPARE WASTE SLATE DISPOSAL AREA	TC	3
86-4-0051E	N. S. - HALI FAX	SLUDGE DISPOSAL	TC	3
86-3-0095E	N. S. - MOUNT WILLIAMS	ESTABLISH PLANT TO RECYCLE CARDBOARD & NEWSPRINT	DRIE	3
86-3-0103E	N. S. - NEW GLASGOW	ESTABLISH PLANT FOR WOODEN BUNKS, BEDS & HEADBOARDS	DRIE	3
86-3-0096E	N. S. - NEW GLASGOW	MODERNIZE/EXPAND TIRE RETREADING FACILITY	DRIE	3
86-3-0098E	N. S. - NEW MINAS	EXPAND BRAKE, ENGINE & ENGINE COMPONENTS PLANT	DRIE	3
86-3-0088E	N. S. - PORT LATOUR	MODERNIZE HERRING PROCESS LINE	DRIE	3
86-3-0091E	N. S. - RIVERPORT	ESTABLISH PRE-CAST CONCRETE PLANT	DRIE	3
86-3-0102E	N. S. - SHELBURNE	MODERNIZE STONE CUTTING FACILITY	DRIE	3
86-3-0100E	N. S. - SPRINGHILL	MODERNIZE BATTERY MANUFACTURING PLANT	DRIE	3
86-3-0099E	N. S. - STELLARTON	ESTABLISH RUG 8 RUNNER PLANT	DRIE	3
86-3-0050E	N. S. - SYDNEY	EXPAND METERED PARKING	TC	2
86-3-0051E	N. S. - SYDNEY	REPLACE UNDERGROUND FUEL TANKS CSB/FEC	TC	2
86-3-0094E	N. S. - TRURO	ESTABLISH METAL FABRICATING FACILITY	DRIE	3
86-3-0104E	N. S. - UPPER OHIO	ESTABLISH SAWMILL	DRIE	3
86-3-0089E	N. S. - WINDSOR	EXPAND FOLDING CARTON PLANT	DRIE	3
86-3-0106E	N. S. - YARMOUTH	ESTABLISH PRINTING FACILITY	DRIE	3
86-3-0105E	N. S. - YARMOUTH	MODERNIZE HERRING FILLET PLANT	DRIE	3
86-3-0052E	N. W. T. - AKLAVIK	REPAIR RIVER BANK	TC	2
86-4-0023E	N. W. T. - BAKER LAKE	INSTALL WATERLINE	TC	3
86-2-0098E	N. W. T. - BAKER LAKE	NEW EQUIPMENT MAINTENANCE GARAGE	TC	2
86-2-0097E	N. W. T. - BAKER LAKE	UPGRADE AIRPORT ACCESS ROAD	TC	2
86-3-0054E	N. W. T. - NORMAN WELLS	CONTAINED SERVICES BUILDING	TC	2
86-2-0103E	N. W. T. - RANKIN INLET	CRASH FIRE TRAINING AREA	TC	3
86-4-0081E	N. W. T. - SPENCE BAY	WASTE HEAT RECOVERY	EMR	2
86-4-0061E	N. W. T. - STRATHCONA SOUND	WHARF REPAIRS	TC	4
86-3-0055E	N. W. T. - WHALE COVE	PASSENGER SHELTER	TC	2
86-4-0122E	N. W. T. - Y. T. - 8 SITES	NORTH WARNING SYSTEM - LONG RANGE RADAR	INAC	4
86-4-0121E	N. W. T. - YELLOWKNIFE	HIGHWOOD RESOURCES LTD. - MINING EXPLORATION	INAC	4
86-4-0057E	NFLD. - ARGENTIA	PCB CONTAMINATION CLEANUP	TC	3
86-3-0087E	NFLD. - CORNER BROOK	MODERNIZE GYPSUM FACILITY	DRIE	3
86-2-0135E	NFLD. - DEER LAKE	CONSTRUCT 354 SQ. METRE STORAGE BUILDING	TC	2
86-3-0045E	NFLD. - GANDER	REPLACE HEATING FUEL TANK	TC	2
86-4-0055E	NFLD. - MAKKOVIK	NEW TRANSIT SHED CONSTRUCTION	TC	2

INITIAL ASSESSMENT BULLETIN
FEDERAL ENVIRONMENTAL ASSESSMENT AND REVIEW PROCESS

PAGE NO. 5

DOC. NO.	LOCATION	PROPOSAL	DEPT	DEC
86-4-0056E	NFLD. - RI GOLET	NEW TRANSIT SHED CONSTRUCTION	TC	2
86-4-0073E	ONT. - CUMBERLAND	REPAIR WHARF CAVITIES	TC	2
86-3-0056E	ONT. - DRYDEN	COMBINED SERVICES BUILDING	TC	2
86-3-0058E	ONT. - GORE BAY	CONSTRUCT UNHEATED STORAGE BUILDING	TC	2
86-3-0057E	ONT. - GORE BAY	RESTORE ENTRANCE ROAD	TC	2
86-4-0024E	ONT. - HAMILTON	AIRPORT EXPANSION (LAND PURCHASE)	TC	2
86-4-0025E	ONT. - HAMILTON	AIRPORT EXPANSION (TREE CLEARING IN GOLF COURSE)	TC	3
86-3-0060E	ONT. - HAMILTON	CONSTRUCT MAINTENANCE SERVICES BUILDING	TC	2
86-3-0059E	ONT. - HAMILTON	DEVELOP COMMERCIAL AVIATION AREA	TC	2
86-3-0061E	ONT. - KAPUSKASING	ADD WATER RESERVOIR & EXTEND WATER SUPPLY	TC	2
86-3-0062E	ONT. - KENORA	APRON EXPANSION AND REPLACE MET SITE	TC	3
86-2-0104E	ONT. - KENORA	EXPAND APRON 1	TC	2
86-3-0064E	ONT. - LONDON	CONSTRUCT COVERED BAGGAGE	TC	2
86-3-0065E	ONT. - MOOSONEE	IMPROVE OPERATIONAL SURFACES	TC	3
86-3-0066E	ONT. - NORTH BAY	REPLACE UNHEATED STORAGE BUILDING	TC	2
86-3-0068E	ONT. - OSHAWA	REPLACE FEC, SHELTER, CONTROL PANEL, IPU	TC	2
86-3-0067E	ONT. - OSHAWA	RESURFACE RUNWAY 04-22 INCL. DRAINAGE & LIGHTING SYS.	TC	2
86-4-0118E	ONT. - OTTAWA	500 KV LINE - EASTERN GREENBELT	NCC	3
86-3-0062E	ONT. - OTTAWA	500 KV RIVER CROSSING	NCC	3
86-3-0069E	ONT. - OTTAWA	AIRCRAFT DE-ICING/ANTI-ICING PROGRAM	TC	4
86-3-0076E	ONT. - OTTAWA	AIRPORT ZONING, TREE CUTTING & DPW SURVEY NEEDS	TC	2
86-3-0060E	ONT. - OTTAWA	BROKEN TREE CLEAN-UP AIRPORT PARKWAY	NCC	3
86-4-0097E	ONT. - OTTAWA	BURIED CABLE & DUCT	NCC	3
86-4-0103E	ONT. - OTTAWA	BURIED TELEPHONE CABLE (ALERT ROAD)	NCC	3
86-4-0093E	ONT. - OTTAWA	CAR SALES LOT EXPANSION	NCC	9
86-4-0104E	ONT. - OTTAWA	CULVERT AND GABIONS (PINECREST CREEK)	NCC	9
86-4-0107E	ONT. - OTTAWA	DIPLOMATIC MISSION SITE (CONCORD)	NCC	3
86-4-0106E	ONT. - OTTAWA	DUCT UNDER CANAL	NCC	3
86-3-0074E	ONT. - OTTAWA	EXPAND NORTH FIELD G.A. DEVELOPMENT	TC	2
86-4-0095E	ONT. - OTTAWA	FOREST ACCESS ROAD UPGRADING	NCC	3
86-4-0096E	ONT. - OTTAWA	GAS LINE EASEMENT	NCC	3
86-2-0110E	ONT. - OTTAWA	GLOUCESTER LANDFILL WASTE SITE CLEANUP	TC	5
86-4-0092E	ONT. - OTTAWA	GUY WIRES FOR HYDRO LINE	NCC	3
86-3-0077E	ONT. - OTTAWA	IMPLEMENT ECONOMY PARKING/SHUTTLE BUS OPERATION	TC	2
86-4-0099E	ONT. - OTTAWA	LESTER ROAD EXTENSION	NCC	3
86-4-0101E	ONT. - OTTAWA	MAXIME TRUNK RELIEF SEWER	NCC	3

INITIAL ASSESSMENT BULLETIN
FEDERAL ENVIRONMENTAL ASSESSMENT AND REVIEW PROCESS

PAGE NO. 6

DOC. NO.	LOCATION	PROPOSAL	DEPT	DEC
86-4-0100E	ONT. - OTTAWA	NEPEAN SNOW DUMP	NCC	3
86-4-0088E	ONT. - OTTAWA	NEPEAN SOCCER FIELD	NCC	3
86-3-0070E	ONT. - OTTAWA	NEW FIELD ELECTRICAL CENTRE	TC	2
86-3-0075E	ONT. - OTTAWA	PCB TRANSFORMER STORAGE FACILITY	TC	2
86-4-0091E	ONT. - OTTAWA	PORTABLE SAWMILL	NCC	3
86-4-0108E	ONT. - OTTAWA	RAILWAY TERRACE PROMENADE - CANAL ACCESS	NCC	3
86-4-0094E	ONT. - OTTAWA	REGULARIZE TEMPORARY HYDRO LINE	NCC	9
86-3-0071E	ONT. - OTTAWA	RESTORE NORTH FIELD AIRSIDE SURFACE - PHASE I	TC	2
86-3-0073E	ONT. - OTTAWA	RESTORE NORTH FIELD AIRSIDE SURFACES - PHASE II	TC	2
86-3-0072E	ONT. - OTTAWA	RESTORE NORTH FIELD ROADS AND DRAINAGE	TC	2
86-4-0087E	ONT. - OTTAWA	RMOC PARKING LOT	NCC	9
86-4-0098E	ONT. - OTTAWA	ROAD RECONSTRUCTION (125 METRES)	NCC	3
86-4-0086E	ONT. - OTTAWA	ROCKCLIFFE SNOW DUMP	NCC	3
86-4-0105E	ONT. - OTTAWA	SAWMILL CREEK REALIGNMENT	NCC	9
86-4-0102E	ONT. - OTTAWA	SEWER REPLACEMENT (CLINE-BELAIR)	NCC	3
86-4-0089E	ONT. - OTTAWA	SIGN INSTALLATION	NCC	9
86-3-0064E	ONT. - OTTAWA	SNOW DUMP - RIVERSIDE DRIVE	NCC	4
86-4-0090E	ONT. - OTTAWA	SOCCER FIELD - KNOXDALE ROAD	NCC	9
86-2-0109E	ONT. - OTTAWA	STORMWATER DRAINAGE IMPROVEMENTS	TC	3
86-3-0063E	ONT. - OTTAWA	TRANSFORMER STATION EXPANSION-RIDGE ROAD	NCC	3
86-3-0061E	ONT. - OTTAWA	TREE TRIMMING AND CLEAN-UP GOLF COURSES	NCC	3
86-3-0057E	ONT. - OTTAWA	WHITE FATHERS SALE 8 SUBDIVISION (1)	NCC	9
86-3-0058E	ONT. - OTTAWA	WHITE FATHERS SALE & SUBDIVISION (2)	NCC	3
86-3-0059E	ONT. - OTTAWA	WHITE FATHERS SALE & SUBDIVISION (3)	NCC	3
86-3-0078E	ONT. - RED LAKE	CRASH FIREFIGHTING TRAINING AREA	TC	4
86-3-0079E	ONT. - RED LAKE	SECURITY FENCE AND CULVERTS	TC	2
86-3-0080E	ONT. - SARNIA	NEW FIREHALL & MTC. SERVICES BUILDING	TC	2
86-3-0081E	ONT. - SAULT STE. MARIE	REPLACE PERIMETER FENCE	TC	2
86-2-0105E	ONT. - THUNDER BAY	APRON 1A EXPANSION	TC	2
86-3-0082E	ONT. - THUNDER BAY	RAMP PROJECT	TC	4
86-3-0083E	ONT. - THUNDER BAY	UNDERGROUND FUEL STORAGE AND DISPENSER	TC	3
86-3-0084E	ONT. - TIMMINS	PROVIDE PERIMETER/SAFETY FENCE	TC	2
86-2-0115E	ONT. - TIMMINS	UPGRADE, RELOCATE FIRE TRAINING AREA	TC	3
86-3-0085E	ONT. - TORONTO ISLAND	ADMIN. BUILDING IMPROVEMENTS FOR CONTINUED GEN. AVIAT.	TC	2
86-3-0089E	ONT. - TORONTO ISLAND	AIRPORT ZONING, TREE CUTTING & DPW SURVEY NEEDS	TC	2
86-4-0026E	ONT. - TORONTO ISLAND	EXPAND TERMINAL APRON	TC	0

INITIAL ASSESSMENT BULLETIN
FEDERAL ENVIRONMENTAL ASSESSMENT AND REVIEW PROCESS

PAGE NO. 7

DOC. NO.	LOCATION	PROPOSAL	DEPT	DEC
86-3-0086E	ONT. - TORONTO ISLAND	IMPROVE UTILITIES AND SERVICES	TC	2
86-3-0088E	ONT. - TORONTO ISLAND	IMPROVEMENTS FOR CONTINUED GEN. AVIATION	TC	2
86-3-0090E	ONT. - TORONTO ISLAND	REPLACE MAINTENANCE GARAGE	TC	2
86-3-0087E	ONT. - TORONTO ISLAND	UPGRADE WATER SYSTEMS	TC	2
86-3-0092E	ONT. - TORONTO-LESTER B. PEARSON	AIRCRAFT DE-ICING/ANTI-ICING PROGRAM	TC	4
86-3-0094E	ONT. - TORONTO-LESTER B. PEARSON	AIRSIDE ROAD EXTENSION - C.P. AIR LOT	TC	3
86-2-0114E	ONT. - TORONTO-LESTER B. PEARSON	CONSTRUCT PERIMETER ROAD	TC	3
86-3-0097E	ONT. - TORONTO-LESTER B. PEARSON	GENERAL AVIATION ACCESS ROAD EXPANSION	TC	3
86-3-0093E	ONT. - TORONTO-LESTER B. PEARSON	GENERAL AVIATION SERVICE ROAD CONNECTION	TC	3
86-2-0111E	ONT. - TORONTO-LESTER B. PEARSON	GENERAL AVIATION SERVICE ROAD MODIFICATIONS	TC	2
86-2-0112E	ONT. - TORONTO-LESTER B. PEARSON	INFRASTRUCTURE TO SUPPORT TERMINAL 3	TC	4
86-3-0091E	ONT. - TORONTO-LESTER B. PEARSON	INTERNATIONAL SOLID WASTE DISPOSAL	TC	4
86-3-0095E	ONT. - TORONTO-LESTER B. PEARSON	NEW AIRSIDE ACCESS AROUND RUNWAY 15/33	TC	3
86-3-0096E	ONT. - TORONTO-LESTER B. PEARSON	TERMINAL 3 DEVELOPMENT	TC	4
86-3-0098E	ONT. - WILKINSON	EXPAND PUBLIC PARKING	TC	2
86-3-0099E	ONT. - WINDSOR	EQUIPMENT GARAGE IMPROVEMENTS	TC	2
86-3-0084E	P. E. I. - BELLE RIVER	EXPAND FISH PROCESSING PLANT	DRIE	3
86-3-0086E	P. E. I. - CHARLOTTETOWN	EXPAND INDUSTRIAL CHEMICAL PLANT	DRIE	3
86-3-0100E	P. E. I. - CHARLOTTETOWN	REPLACE FIVE UNDERGROUND FUEL TANKS	TC	3
86-4-0082E	P. E. I. - CHARLOTTETOWN	WOOD BIOMASS CONVERSION	EMR	2
86-4-0084E	P. E. I. - CROSSROADS	WOOD BIOMASS CONVERSION	EMR	2
86-4-0085E	P. E. I. - HUNTER RIVER	WOOD BIOMASS CONVERSION	EMR	2
86-3-0081E	P. E. I. - KENSINGTON	MODERNIZE FISH PROCESSING PLANT	DRIE	3
86-3-0083E	P. E. I. - NEW ANNAN	MODERNIZE VEGETABLE PROCESSING PLANT	DRIE	3
86-4-0083E	P. E. I. - NORTHPORT	WOOD BIOMASS CONVERSION	EMR	2
86-3-0085E	P. E. I. - RICHMOND	MODERNIZE/EXPAND SAWMILL	DRIE	3
86-3-0082E	P. E. I. - SOURIS	MODERNIZE POTATO PROCESSING PLANT	DRIE	3
86-4-0078E	P. E. I. - SOURIS (PROJECT A)	CONSTRUCTION NEW MARGINAL WHARF	TC	3
86-4-0076E	P. E. I. - SUMMERSIDE	BOAT BASIN DREDGING	TC	3
86-4-0060E	QUE. - ANSE A L'EAU	WHARF REPAIRS	TC	3
86-4-0074E	QUE. - BAYE COMEAU	BERM CONSTRUCTION	TC	2
86-4-0027E	QUE. - BAYE COMEAU	CLEAR TRANSITION AREAS	TC	3
86-3-0101E	QUE. - BAYE COMEAU	DRAINAGE - CITY SIDE	TC	3
86-4-0064E	QUE. - BAYE JOHAN BEETZ	INHIBIT LIMNORIAS	TC	2
86-4-0028E	QUE. - BLANC-SABLON	SECURITY FENCE	TC	2
86-3-0102E	QUE. - BROUGHTON ISLAND	CONSTRUCT AIRPLANE FUEL SUPPLY STATIONS	TC	3

INITIAL ASSESSMENT BULLETIN
FEDERAL ENVIRONMENTAL ASSESSMENT AND REVIEW PROCESS

PAGE NO. 8

DOC. NO.	LOCATION	PROPOSAL	DEPT	DEC
86-4-0066E	QUE. - CARLETON	DREDGING	TC	2
86-4-0029E	QUE. - CAUSAPSCAL	RUNWAY PAVING	TC	0
86-4-0067E	QUE. - CHANDLER	WHARF DREDGING	TC	2
86-3-0114E	QUE. - CLORIDORME	MODERNIZE FISH PROCESSING PLANT	DRIE	3
86-3-0103E	QUE. - DORVAL	AIRCRAFT DE-ICING/ANTI-ICING PROGRAM	TC	4
86-2-0118E	QUE. - DORVAL	REPAIRS TO MUNICIPAL SERVICES - PHASE I	TC	2
86-4-0030E	QUE. - DRUMMONDVILLE	PAVING AND LIGHTING FOR RUNWAY	TC	4
86-3-0110E	QUE. - ESPRIT- SAINT	ESTABLISH SAWMILL	DRIE	3
86-3-0111E	QUE. - ETANG- DU- NORD	EXPAND FISH PROCESSING PLANT	DRIE	3
86-2-0119E	QUE. - FROBISHER	RESTORE FUELLING STATION	TC	3
86-3-0104E	QUE. - GASPE	INSTALL PURIFYING SYSTEM	TC	3
86-4-0058E	QUE. - GASPE (SANDY BEACH)	WHARF RECONSTRUCTION	TC	3
86-3-0112E	QUE. - GRANDE- VALLEE	ESTABLISH SHINGLE PLANT	DRIE	3
86-4-0071E	QUE. - GROS CACOUNA	MAINTENANCE DREDGING	TC	2
86-3-0105E	QUE. - HAVRE ST. PIERRE	EXTEND RUNWAY	TC	4
86-3-0115E	QUE. - IBERVILLE	ESTABLISH PACKAGING MANUFACTURING PLANT	DRIE	3
86-4-0070E	QUE. - ILE AUX COUDRES	WHARF DREDGING	TC	2
86-4-0072E	QUE. - ILE AUX GRUES	MAINTENANCE DREDGING	TC	4
86-4-0031E	QUE. - ILES DE LA MADELEINE	RECOVER PARTS OF TAXIWAY	TC	2
86-2-0120E	QUE. - INUKJUAQ	DEVELOP AIRPORT	TC	4
86-3-0117E	QUE. - JOLIETTE	EXPAND METAL STRUCTURES MANUFACTURING PLANT	DRIE	3
86-4-0032E	QUE. - JOLIETTE	RUNWAY PAVING	TC	0
86-4-0033E	QUE. - KANGIQUJUAQ	DEVELOP AIRPORT	TC	4
86-4-0065E	QUE. - KEGASKA	INHIBIT LIMNORIAS	TC	2
86-4-0121E	QUE. - KUUJJUAQ	NEW TAXIWAY AND ACCESS ROAD	TC	3
86-3-0107E	QUE. - KUUJJUAQ	INSTALL FENCE	TC	3
86-3-0106E	QUE. - KUUJJUAQ	RELOCATE STEWART LAKE ROAD	TC	3
86-3-0108E	QUE. - LA ROMAINE	CONSTRUCT A LANDING PLATFORM AND PONTOON	TC	3
86-4-0120E	QUE. - LAVALTRIE	DIGGING NEAR THE STATION	EC	1
86-3-0065E	QUE. - LONGUEUIL	RENOVATIONS TO 780 ROLAND- THERRIEN	PWC	4
86-3-0107E	QUE. - LOUISEVILLE	ESTABLISH BATTERY MANUFACTURING PLANT	DRIE	3
86-3-0109E	QUE. - LOW	EXPAND SAWMILL	DRIE	3
86-4-0034E	QUE. - MANIWAKI	INSTALL APPROACH LIGHTS	TC	0
86-4-0075E	QUE. - MASSON	WHARF REPAIRS	TC	0
86-3-0109E	QUE. - MIRABEL	AIRCRAFT DE-ICING/ANTI-ICING PROGRAM	TC	4
86-3-0110E	QUE. - MIRABEL	HANGAR CONSTRUCTION WITH APRON AND TAXIWAY	TC	3

INITIAL ASSESSMENT BULLETIN
FEDERAL ENVIRONMENTAL ASSESSMENT AND REVIEW PROCESS

PAGE NO. 9

DOC. NO.	LOCATION	PROPOSAL	DEPT	DEC
86-3-0111E	QUE. - MONT- JOLI	MODIFY AND RELOCATE FUELLING SYSTEM	TC	3
86-3-0118E	QUE. - MONTREAL- EAST	ESTABLISH METAL PROCESSING PLANT	DRIE	3
86-3-0119E	QUE. - MONTREAL- EAST	ESTABLISH PETROCHEMICAL FACILITY	DRIE	3
86-3-0112E	QUE. - NATASHQUAN	EXTEND RUNWAY	TC	4
86-2-0124E	QUE. - NATASHQUAN	LEVEL AND STABILIZE SHOULDERS	TC	3
86-4-0035E	QUE. - NATASHQUAN	SECURITY FENCE	TC	2
86-3-0113E	QUE. - NATASHQUAN	SEPTIC TANK, SPREADING FIELD AND WELL	TC	3
86-3-0108E	QUE. - NORTHFIELD	EXPAND SAWMILL	DRIE	3
86-3-0116E	QUE. - NOTRE- DAME- DU- BON- CONSEIL	ESTABLISH ELECTROSTATIC COATING PLANT	DRIE	3
86-4-0036E	QUE. - PABOK	WIDEN RUNWAY	TC	0
86-2-0125E	QUE. - PANGNI RTUNG	IMPROVEMENTS TO MANOEUVERING AREAS	TC	3
86-3-0114E	QUE. - POND INLET	IMPROVEMENTS TO MANOEUVERING AREAS	TC	3
86-4-0037E	QUE. - QUAQTAQ	DEVELOP AIRPORT	TC	4
86-3-0116E	QUE. - QUEBEC	CONSTRUCT DEPOT FOR MAINTENANCE EQUIPMENT	TC	2
86-4-0038E	QUE. - QUEBEC	DEVELOP COMMERCIAL AVIATION AREA (CONIFAIR)	TC	3
86-3-0115E	QUE. - QUEBEC	INSTALL HEATING DUCTS FOR MTCE. GARAGE	TC	2
86-4-0069E	QUE. - RI MOUSKI - EAST	WHARF DREDGING	TC	2
86-4-0068E	QUE. - RI VI ERE- DU- LOUP	MAINTENANCE DREDGING	TC	2
86-3-0120E	QUE. - SAINT JEAN	CONSTRUCT ACCESS ROAD, PARKING LOT, MUNICIPAL SERVICES	TC	3
86-3-0121E	QUE. - SAINT JEAN	EXTEND AND REPAVE RUNWAY 11-29	TC	4
86-3-01196	QUE. - SAINT JEAN	SETTING UP GEN. AVIATION ZONE	TC	3
86-4-0119E	QUE. - SAINTE- MARIE	PROTECTION AGAINST CURVES IN CHAUDIERE RIVER	EC	1
86-3-0117E	QUE. - SANIKILVAQ	IMPROVEMENTS TO MANOEUVERING AREAS	TC	3
86-3-0118E	QUE. - SCHEFFERVILLE	RELOCATE AND REPLACE FUELLING STATION	TC	3
86-2-0127E	QUE. - SEPT. ILES	MOCK-UP FOR FIRE TRAINING AREA	TC	4
86-2-0128E	QUE. - SEPT. ILES	REPAIRS/IMPROVEMENTS TO DRAINAGE SYSTEM	TC	3
86-4-0062E	QUE. - ST. FRANCOIS ILE D'ORLEANS	REFLOAT VESSEL AND MAINTENANCE DREDGE	TC	3
86-4-0039E	QUE. - ST. GEORGES DE BEAUCE	RUNWAY EXTENSION	TC	4
86-4-0049E	QUE. - ST. HUBERT	RUNWAY 18-36 CONVERT TO TAXIWAY	TC	3
86-4-0059E	QUE. - ST. JOSEPH DE LA RIVE	EAST WALL WHARF REPAIRS	TC	3
86-3-0066E	QUE. - STE- CROIX DE LOTBINIERE	DEMOLITION OF THE WHARF ON LOTS 131 AND 132	PWC	4
86-2-0129E	QUE. - TASI UJAC	DEVELOP AIRPORT	TC	4
86-3-0120E	QUE. - THETFORD MINES	ESTABLISH PLANT/SYNTHETIC OLIVINE FROM ASBESTOS BY- PROD	DRIE	3
86-4-0040E	QUE. - THETFORD MINES	RUNWAY EXTENSION & VISUAL AIDS	TC	4
86-3-0113E	QUE. - TOURELLE	MODERNIZE FISH PROCESSING PLANT	DRIE	3
86-4-0063E	QUE. - TROIS PISTOLES	WHARF RECONSTRUCTION AND DREDGE	TC	3

INITIAL ASSESSMENT BULLETIN
FEDERAL ENVIRONMENTAL ASSESSMENT AND REVIEW PROCESS

PAGE NO.10

DOC. NO.	LOCATION	PROPOSAL	DEPT	DEC.
86-4-0041E	QUE. - TROIS-RIVIERES	SECURITY FENCE	TC	2
86-4-0042E	QUE. - VICTORIAVILLE	RUNWAY EXTENSION	TC	4
86-4-0044E	SASK. - DAVIDSON	FEASIBILITY STUDY FOR POSSIBLE EXTENSION	TC	4
86-4-0045E	SASK. - ESTON	FEASIBILITY STUDY FOR POSSIBLE EXTENSION	TC	4
86-4-0046E	SASK. - KIPLING	AIRPORT IMPROVEMENTS	TC	4
86-3-0122E	SASK. - LAC LA RONGE	AIR TERMINAL BUILDING AND FLIGHT SERVICE STATION	TC	2
86-2-0107E	SASK. - LAC LA RONGE	BOUNDARY FENCE	TC	2
86-2-0106E	SASK. - LAC LA RONGE	COMMERCIAL DEVELOPMENT AREA "B"	TC	2
86-4-0047E	SASK. - LAC LA RONGE	REPLACE 20 KW REGULATOR RUNWAY LIGHTING	TC	3
86-3-0123E	SASK. - LANGRUTH	RAMP PROJECT	TC	4
86-3-0124E	SASK. - LUSELAND	NEW RUNWAY	TC	4
86-4-0043E	SASK. - MAPLE CREEK	FEASIBILITY STUDY FOR POSSIBLE EXTENSION	TC	4
86-3-0125E	SASK. - MELVILLE	CONSTRUCT AND PAVE CROSSWIND RUNWAY	TC	4
86-3-0128E	SASK. - NORTH BATTLEFORD	ACCESS ROAD TO HANGAR	TC	2
86-3-0075E	SASK. - NORTH BATTLEFORD	ESTABLISH DOOR PANEL PLANT	DRIE	3
86-3-0072E	SASK. - NORTH BATTLEFORD	EXPANSION SEED COATING PLANT	DRIE	3
86-2-0108E	SASK. - NORTH BATTLEFORD	REHAB. TAXIWAYS "B" & "C"	TC	1
86-3-0127E	SASK. - NORTH BATTLEFORD	REMOVE UNDERGROUND FUEL TANKS	TC	3
86-3-0126E	SASK. - NORTH BATTLEFORD	SECURITY FENCE	TC	2
86-3-0069E	SASK. - PRINCE ALBERT	ESTABLISH CHOPSTICK PLANT	DRIE	3
86-3-0129E	SASK. - REGINA	REPLACE FIRE TRAINING MOCK-UP	TC	4
86-3-0071E	SASK. - SASKATOON	ESTABLISH STEEL FOUNDRY	DRIE	3
86-3-0074E	SASK. - SASKATOON	EXPANSION MARBLE COUNTER TOP FACILITY	DRIE	3
86-3-0131E	SASK. - SASKATOON	EXTEND AND MODIFY EQUIPMENT GARAGE	TC	2
86-3-0073E	SASK. - SASKATOON	R&D PLASTIC COATING PROCESS FOR TANKS & BRIDGES	DRIE	3
86-3-0130E	SASK. - SASKATOON	REPLACE POWERLITE SWITCHGEAR	TC	3
86-4-0048E	SASK. - SHAUNAVON	AIRPORT IMPROVEMENTS	TC	4
86-3-0070E	SASK. - TISDALE	EXPANSION EGG CARTON PLANT	DRIE	3
86-4-0128E	Y.T. - BEAUFORT SEA	TANKER TRANSPORT - OIL	INAC	4
86-4-0123E	Y.T. - FARO	CURRAGH RESOURCES LTD. - ACCESS - NEW	INAC	4
86-4-0124E	Y.T. - FARO	CURRAGH RESOURCES LTD. - MINE DEVELOPMENT	INAC	4
86-4-0125E	Y.T. - KETZA RIVER	CANAMAX RESOURCES LTD. - ACCESS - ROUTE CHANGE	INAC	4
86-4-0126E	Y.T. - KETZA RIVER	CANAMAX RESOURCES LTD. - MINE DEVELOPMENT	INAC	4
86-3-0053E	Y.T. - MAYO	DRAINAGE DITCH IMPROVEMENTS	TC	2
86-4-0127E	Y.T. - NORTH YUKON	NORTH WARNING SYSTEM	INAC	4
86-3-0132E	Y.T. - WATSON LAKE	EQUIPMENT STORAGE BUILDING	TC	2

INITIAL ASSESSMENT BULLETIN
FEDERAL ENVIRONMENTAL ASSESSMENT AND REVIEW PROCESS

PAGE NO. 11

<u>DOC. NO.</u>	<u>LOCATION</u>	<u>PROPOSAL</u>	DEPT	DEC
86-3-0067E	Y. T. - WHITEHORSE	GOVERNMENT OF CANADA BUILDING REDEVELOPMENT	PWC	3
86-3-0134E	Y. T. - WHITEHORSE	SAND STORAGE BUILDING	TC	2
86-3-0133E	Y. T. - WHITEHORSE	TRADE SHOP	TC	2

Department names in this issue of the Bulletin are abbreviated as follows:

DRIE=Department of Regional Industrial Expansion	PWC -Public Works Canada	EC=Environment Canada
CIDA=Canadian International Development Agency	INAC=Indian & Northern Affairs Canada	ND=National Defence
EMR =Energy, Mines & Resources Canada	NCC =National Capital Commission	TC=Transport Canada

ODP =Offshore Dumping permits