

**BULLETIN
OF
INITIAL ASSESSMENT DECISIONS**

**UNDER
THE FEDERAL ENVIRONMENTAL ASSESSMENT AND REVIEW PROCESS**

EDITION 4
April 1, 1987 - May 31, 1988

© Minister of Supply and Services Canada 1988

Cat. No. En 104-6/3

ISBN O-662-56 163-5

INTRODUCTION

Initial assessment is part of the federal Environmental Assessment and Review Process (EARP) which is used to implement Government policy on environmental assessment. Initial assessment helps determine the potential environmental and directly related social implications of proposals for which the government has a decision-making responsibility. This Bulletin contains summaries of decisions about proposals made as a result of initial assessment.

EARP is to be used early in planning before irrevocable decisions or actions are taken. Guidelines on this policy were issued by Order in Council June 21, 1984.

This Guidelines Order applies to all federal departments, boards, agencies. Parent corporations are expected to make this part of their corporate policy unless this is not possible within the legislative authority of the corporation. The Order also applies to agencies that deal with regulation of certain activities unless this would cause a duplication of procedures or legislation does not permit their decisions to be based on environmental factors. In this publication all these are referred to as departments.

EARP consists of two possible phases: initial assessment and public review. This Bulletin deals with the decisions arising from the first phase. It is published quarterly by the Federal Environmental Assessment Review Office (FEARO) and is supplementary to the "Initial Assessment Guide" to EARP (also published by FEARO) that provides federal departments with procedural guidelines for the initial environmental assessment of proposals.

INITIAL ASSESSMENT

Initial assessment is used when a department intends to undertake any proposal of its own. It is also used when a department has the authority to make a decision about a proposal of another organization that:

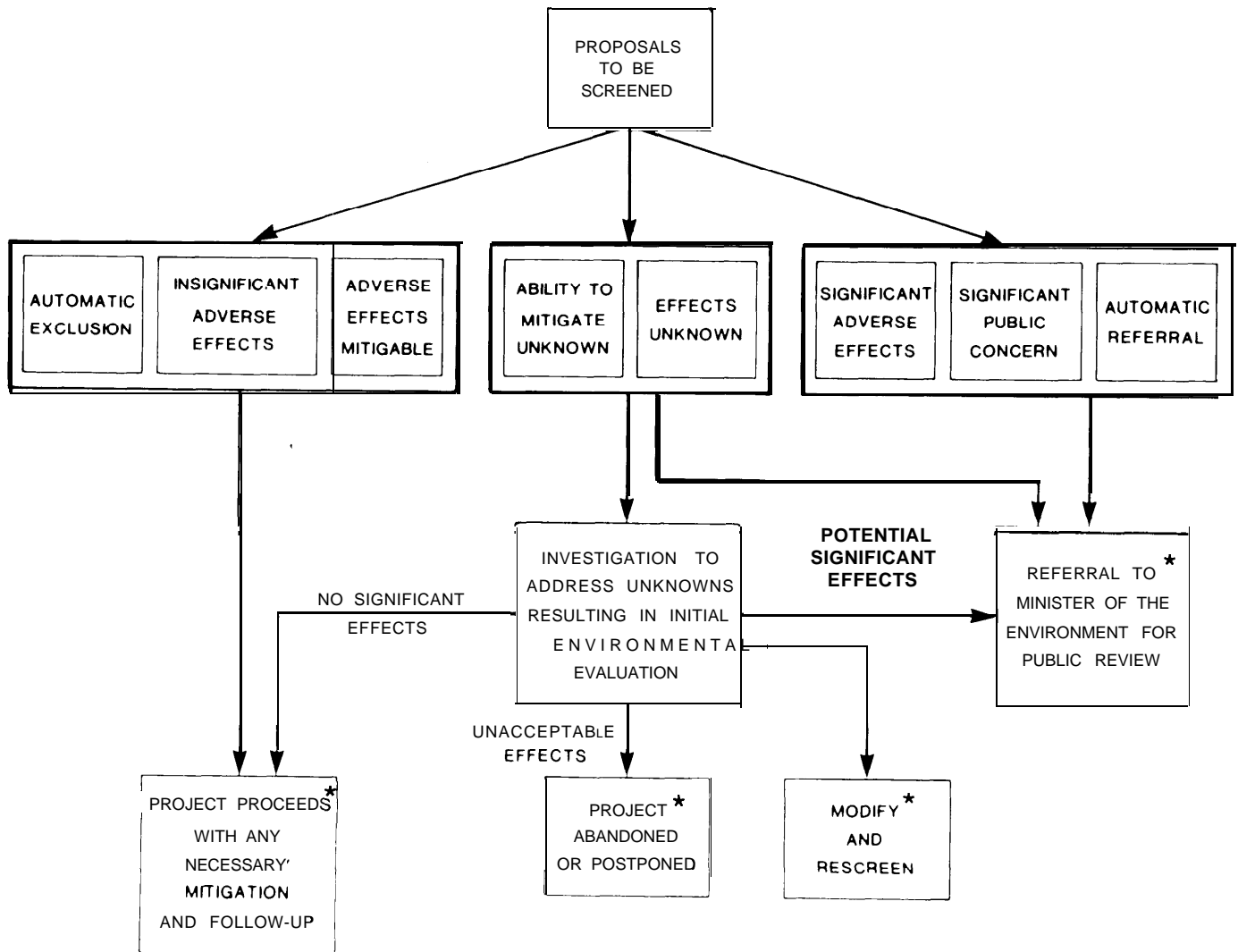
- might have an effect on federal Government responsibility;
 - would require federal Government financial commitment;
- or,
- would be undertaken on lands administered by the federal Government, including those offshore.

Initial assessment starts with an environmental screening by a department to determine the potential environmental and directly related social effects of a proposal; that is, effects that could bring adverse changes to the natural environment and effects that these changes could have on people. Screening may lead to additional study that results in a detailed document called an Initial Environmental Evaluation (IEE). This document is described in more detail on page 4 of the "Initial Assessment Guide" published by FEARO for departments to use during initial assessment. Its place in initial assessment can be seen in the diagram on page 4 of this Bulletin, which is taken from the Guide.

As a result of assessment, a department makes a decision about the environmental significance of a proposal. In this Bulletin each proposal listed has been assigned a number indicating what decision was taken. These decisions are described on page 5 in the section "How To Use This Bulletin." Eight decisions in that list are the same as those described on page 4 of the "Initial Assessment Guide." There are two additional numbers: 0 -to indicate that initial assessment of the proposal has started but no decision has been taken and 10 -to indicate that the proposal is to be carried out in another country under the auspices of the Canadian International Development Agency and although an environmental impact statement may be produced, there may be no public review by an independent panel.

Two of the decisions may be made immediately: automatic exclusion from study or automatic referral to the Minister of the Environment for a public review by an independent panel. Excluded proposals are those that would not produce any adverse environmental effects, such as routine maintenance. Automatic referrals are made for proposals that potentially could produce significant adverse environmental effects. Automatic exclusions or referrals are usually based on lists prepared by departments in co-operation with FEARO.

INITIAL ASSESSMENT



How to Use This Bulletin

The list in this bulletin consists of four columns of information:
LOCATION – PROPOSAL – DEPARTMENT – DECISION

Location

Locations are listed by province first and locality second, for example, ALTA.-Banff Park. Two other designations are used: offshore and international.

Provinces and territories are abbreviated as follows:

NFLD.	Newfoundland
N.B.	New Brunswick
QUE.	Quebec
MAN.	Manitoba
ALTA.	Alberta
Y.T.	Yukon Territory
P.E.I.	Prince Edward Island
N.S.	Nova Scotia
ONT.	Ontario
SASK.	Saskatchewan
B.C.	British Columbia
N.W.T.	Northwest Territories

Offshore designations are:

Gr. Banks	Grand Banks Offshore
	Labrador
Sct. Shelf	Scotian Shelf
H. Bay	Hudson Bay
B. Sea	Beaufort Sea
St. Lawrence	Gulf of St. Lawrence
Geo. Bank	Georges Bank
Arc. Is.	Arctic Islands
W. Coast	Offshore West Coast

The designation for proposals outside of Canada is Int. - International.

Proposal

Each proposal is described first from its largest to its smallest components in descending order, and second, by the action, for example, AIRPORT RUNWAY-EXTEND.

Department

Department means any department, board or agency and any parent corporation of the Government of Canada.

Decisions

Initial assessment decisions about proposals are listed as numbers and for the most part, are the same decisions as

those listed on page 4 of the "Initial Assessment Guide". Number 0, however, is not a decision; rather, it indicates that the initial assessment of the proposal has begun and no decision has been made as yet. One of the outcomes of initial assessment may be an automatic exclusion of a proposal from study. Exclusions are not included in this Bulletin but information about them may be obtained from departments. Decisions designated as Number 10, indicating the proposal is to be implemented in another country through CIDA, are not in the Guide but are in this Bulletin.

0 - initial assessment starting - no decision yet;

1 - automatically exclude proposal from study as a type that would not produce any adverse environmental effects, (NOT listed in this Bulletin);

2 - proceed with proposal because there are no significant adverse effects;

3 - proceed with proposal because the potentially adverse impacts may be mitigated with known technology;

4 - assess the proposal in greater detail (Initial Environmental Evaluation-IEE) because the adverse effects that might be caused by the proposal are unknown;

5 - give the proposal further study (IEE) because the ability to mitigate adverse effects is unknown;

6 - refer the proposal to the Minister of the Environment for a public review by a panel because the potential adverse impacts are significant;

7 - refer the proposal to the Minister of the Environment for a public review because public concern about it is such that a review is desirable;

8 - automatically refer the proposal to the Minister of the Environment for a public review as a type that potentially could produce significant environmental effects.

9 - either modify the proposal and rescreen it or abandon it because the impacts are unacceptable.

10 - production of an Environmental Impact Statement at request of the Canadian International Development Agency because potential adverse impacts are significant (CIDA)

To Obtain More Information on Any Proposal

The list of proposals is a summary meant to identify, in a few key words, proposals that have entered the process. It is not intended to provide a complete description nor be the sole source for information about such proposals. More detail about any proposal, as well as lists of automatic exclusions and automatic referrals, is retained by the department concerned. Requests for additional information -available in either official language- should be made to the appropriate departmental contact listed at the end of this bulletin.

(819) 997-1000 (604) 666-243 1

Mr. R.H.Weir
Chief
Environmental Impact Systems Division
Environment Canada
Place Vincent Massey, 15th Floor
351 St. Joseph Blvd.
Hull, Quebec
K1A 1C8

Tel: (819) 997-1731

Publications Available From FEAR0

- Environmental Assessment and Review Process Guidelines Order
- Initial Assessment Guide Federal Environmental Assessment and Review Process
- Environmental Assessment Panels: Procedures and Rules for Public Meetings
- Register of Panel Projects (including a list of Panel reports)

DEPARTMENTAL CONTACTS

For more information about the proposals in this bulletin or about proposals excluded from study, please contact the appropriate departmental representative listed below or the department regional office in your area.

Mr. Duncan Hardie
Environmental Protection Branch
Canada Oil & Gas Lands
Administration
Tower "B", 15th Floor, 355 River Road
Vanier, Ontario
K1A0E4
Tel: (613) 991-1917

Mr. E.K. Langtry
A/ Director
Northern Environmental Protection Directorate
Northern Affairs Program
Department of Indian Affairs & Northern
Development
Terrasses de la Chaudiere
10 Wellington Street, North Tower, 6th Floor
Hull, Quebec
K1A 0H4
Tel: (8 19) 997-9090

Mr. Glen Bloodworth
Director
Indian Environmental Protection Branch
Lands, Revenues and Trusts
Department of Indian Affairs & Northern
Development
Terrasses de la Chaudiere
10 Wellington Street, North Tower, Room 2037
Hull, Quebec
K1A 0H4

Tel: (8 19) 997-8424

Mr. A.T. Downs, Director
Conservation & Environment
General Works
Department of National Defence
9th Floor, Centre Block North
10 1 Colonel By Drive
Ottawa, Ontario
K1A 0K2

Tel: (6 13) 995-4 154

Mr. Philip J. Paradine
Environmental Advisor
Natural Resources Division
Canadian International Development Agency
Place du Portage
Phase II, 7th Floor
Hull, Quebec
K1A 0G4

Mr. S. Hamill
Chief, Conservation
Property Branch
National Capital Commission
161 Laurier Ave. W.
Ottawa, Ontario
K1P 6J6
Tel: (613) 996-1811

Dr. J. D. McTaggart-Cowan
Director
Office of Environmental Affairs
Department of Energy, Mines & Resources
580 Booth Street, 28th Floor, Rm 2030
Ottawa, Ontario
K1A 0E4
Tel: (6 13) 992-9924

Mr. S.K. McNeely
Design Effectiveness
Program Affairs
Department of Regional
Industrial Expansion
8th Floor E.
235 Queen Street
Ottawa, Ontario
K1A 0H5

Tel: (613) 954-5555

Ms. Mane-Helene Le Coq
Planning and Co-ordination
intergovernmental & Industry Relations (ACCC)
Transport Canada
26A, Tower C, Place de Ville
330 Sparks Street
Ottawa, Ontario
K1A 0N5

Tel: (613) 991-6505

Mr. D.F. Dixon
Manager, WNRE Environmental Authority
Whiteshell Nuclear Research Establishment
Pinawa, Manitoba,
ROE 1L0
Tel: (204) 753-2311 ext. 2860

Dr. J.C. MacLeod
Director
Fish Habitat Management Branch
Fisheries and Oceans
11th Floor, 200 Kent Street
Ottawa, Ontario, K1A 0E6

Tel: (613) 990-0200

**INITIAL
ASSESSMENT
BULLETIN**

INITIAL ASSESSMENT BULLETIN
FEDERAL ENVIRONMENTAL ASSESSMENT AND REVIEW PROCESS

PAGE NO. 1

DOC. NO.	LOCATION	PROPOSAL	DEPT	DEC
87-4-0079E	ALTA.-ALEXIS	ALEXIS SCHOOL-CONSTRUCT	I NAC	3
87-4-0352E	ALTA.-CALGARY	ADDITION TO HANGAR -SUNWEST	TC	2
87-4-0351E	ALTA.-CALGARY	ADDITION TO HERTZ RENT A CAR	TC	2
87-4-0353E	ALTA.-CALGARY	AEROSPACE MUSEUM	TC	2
87-4-0343E	ALTA.-CALGARY	AIRCRAFT DE-ICING/ANTI-ICING PROGRAM	TC	4
87-4-0354E	ALTA.-CALGARY	BREEZEWAY ALTERATION -HUDSON GENERAL	TC	2
87-4-0340E	ALTA.-CALGARY	COMBINED SERVICES DEVELOPMENT	TC	3
87-4-0342E	ALTA.-CALGARY	CONCRETE PAD ATCO RCMP OFFICE	TC	2
87-4-0341E	ALTA.-CALGARY	IMPROVE BOMB DISPOSAL PIT	TC	2
87-4-0348E	ALTA.-CALGARY	INSTALL H.V.A.C. IN MAINTENANCE GARAGE	TC	2
87-4-0338E	ALTA.-CALGARY	NEW CARGO BUILDING	TC	3
87-4-0344E	ALTA.-CALGARY	OPERATIONS BUILDING/CONTROL TOWER	TC	2
87-4-0188E	ALTA.-CALGARY	REHABILITATE AIR SERVICES WAY	TC	2
87-4-0349E	ALTA.-CALGARY	REPLACE GAS TURBINES WITH DIESELS	TC	2
87-4-0347E	ALTA.-CALGARY	REPLACE STAIRWELL S.U.P.U.'S WITH CENTRAL POWER	TC	2
87-4-0345E	ALTA.-CALGARY	STORMWATER MANAGEMENT - CENTRAL SYSTEM	TC	2
87-4-0189E	ALTA.-CALGARY	UPGRADE EXISTING PARKING LOT AT MAINTENANCE GARAGE	TC	2
87-4-0339E	ALTA.-CALGARY	UPGRADE ILLUMINATED SIGNAGEAIRSIDE	TC	2
87-4-0346E	ALTA.-CALGARY	UPGRADE SEWAGE LIFT NO.1	TC	3
87-4-0350E	ALTA.-CALGARY	UPGRADE UTILITIES WEST HANGAR AREA	TC	3
87-4-0177E	ALTA.-EDEN VALLEY	WATER SUPPLY SYSTEM-CONSTRUCT	INAC	3
87-4-0275E	ALTA.-ERO NORTH	SECURITY FENCE	TC	2
87-4-0276E	ALTA.-ERO SOUTH	SECURITY FENCE	TC	2
87-4-0078E	ALTA.-FORT MCKAY	WATER SYSTEM-CONSTRUCT	INAC	3
87-4-0076E	ALTA.-GREGOIRE LAKE	WATER SYSTEM-CONSTRUCT	I NAC	3
87-4-0075E	ALTA.-JEAN D'OR PRAIRIE	WATER SYSTEM-CONSTRUCT	I NAC	3
87-4-0005E	ALTA.-LETHBRIDGE	BLOOD INDIAN RESERVE IRRIGATION	I NAC	0
87-4-0319E	ALTA.-LETHBRIDGE	REPLACE 48" PERMIETER FENCE WITH SECURITY FENCE (1500M)	TC	2
87-4-0178E	ALTA.-O'CHIESE	WATER AND SEWER SYSTEMS-CONSTRUCT	I NAC	3
87-4-0002E	ALTA.-PINCHER CREEK	THERRIAULT RESERVOIR	AC	2
87-4-0077E	ALTA.-STURGEON LAKE	CORE AREA SERVICES-CONSTRUCT	I NAC	3
87-4-0176E	ALTA.-WHITEFISH LAKE	WATER SOURCE PROTECTION DAM-CONSTRUCT	I NAC	3
87-4-0220E	B.C.-ABBOTSFORD	CLEAR AIRSIDE LAND	TC	0
87-4-0219E	B.C.-ABBOTSFORD	CONSTRUCT TERMINAL/BUSINESS CENTRE	TC	3
87-4-0221E	B.C.-ABBOTSFORD	PAVE PRE-THRESHHOLD AREA-RUNWAY 19	TC	0
87-4-0222E	B.C.-ABBOTSFORD	PAVE ROADS TO GLIDE PATH/LOCALIZER BUILDINGS	TC	0
87-4-0323E	B.C.-ABBOTSFORD	PURCHASE FIREHALL/OFFICE COMPLEX	TC	2
87-4-0365E	B.C.-ADAMS RIVER	EGG PLANT	FO	2
87-4-0377E	B.C.-ARNOUP RIVER	F I SHWAV	FO	2
87-4-0057E	B.C.-BELLA COOLA	EROSION/FLOOD PROTECTION-CONSTRUCT	I NAC	3
87-4-0055E	B.C.-BELLA COOLA	SCHOOL (10 C/R)-CONSTRUCT	INAC	3
87-4-0369E	B.C.-BIG QUALICUM RIVER	GRAVEL CLEANING	FO	3
87-4-0223E	B.C.-BOUNDARY BAY	WATER CONNECTION (CARRY OVER)	TC	0
87-4-0227E	B.C.-CAMPBELL RIVER	COMMERCIAL DEVELOPMENT ACCESS ROAD	TC	2
87-4-0226E	B.C.-CAMPBELL RIVER	EXPAND VEHICLE PARKING LOT	TC	0
87-4-0225E	B.C.-CAMPBELL RIVER	PAVE GENERAL AVIATION TAXIWAY	TC	2
87-4-0224E	B.C.-CAMPBELL RIVER	PAVE GRAVEL SERVICE ROAD	TC	0
87-4-0228E	B.C.-CASTLEGAR	EXPAND AIRPORT TERMINAL BUILDING	TC	0
87-4-0008E	B.C.-CHEHALIS R.	CHARLIE S CHANNEL-FISH HABITAT IMPROVEMENT	FO	2
87-4-0383E	B.C.-CHILKO RIVER	SPAWNING CHANNEL CONSTRUCTION	FO	3
87-4-0366E	B.C.-CHILLIWACK RIVER	WEIR MODIFICATION AT HATCHERY	FO	2
87-4-0071E	B.C.-COLE BAY	SEWAGE SYSTEM-CONSTRUCT	I NAC	3
87-4-0072E	B.C.-COLE BAY	WATER SYSTEM-CONSTRUCT	I NAC	3
87-4-0229E	B.C.-COMOX	APRON EXPANSION	TC	0
87-4-0074E	B.C.-COWICHAN	DYKE FLOOD PROTECTION-CONSTRUCT	INAC	3

INITIAL ASSESSMENT BULLETIN
FEDERAL ENVIRONMENTAL ASSESSMENT AND REVIEW PROCESS

PAGE NO. 2

DOC. NO.	LOCATION	PROPOSAL	DEPT	DEC
87-4-0011E	B.C.-COWICHAN R.	BONSALL SLOUGH-FISH HABITAT IMPROVEMENT	FO	2
87-4-0009E	B.C.-COWICHAN R.	ROTARY PARK CREEK-FISH HABITAT IMPROVEMENT	FO	2
87-4-0230E	B.C.-CRANBROOK	REHABILITATE MAINTENANCE GARAGE	TC	0
87-4-0063E	B.C.-DOLPHIN ISLAND	COMMUNITY INFRASTRUCTURE-CONSTRUCT	I NAC	3
87-4-0364E	B.C.-FRASER CANYON	FISHWAYS	FO	2
87-4-0012E	B.C.-FRASER R.	MARIA SLOUGH-FISH HABITAT IMPROVEMENT	FO	2
87-4-0370E	B.C.-FULTON RIVER	SPAWNING CHANNEL MAINTENANCE	FO	2
87-4-0056E	B.C.-GITSEGUCLA	SCHOOL (6 C/R)-CONSTRUCT	INAC	3
87-4-0374E	B.C.-GLENDALE	SPAWNING CHANNEL CONSTRUCTION	FO	3
87-4-0382E	B.C.-HORSEFLY RIVER	SPAWNING CHANNEL CONSTRUCTION	FO	3
87-4-0052E	B.C.-HOUPSITAS	HVDR ELECTRIC SVSTEM-CONSTRUCT	I NAC	3
87-4-0014E	B.C.-INDIAN R.	FISH HABITAT IMPROVEMENT	FO	2
87-4-0373E	B.C.-INZIANA	SPAWNING CHANNEL CONSTRUCTION	FO	3
87-4-0068E	B.C.-ISKUT	COMMUNITY INFRASTRUCTURE-CONSTRUCT	I NAC	3
87-4-0380E	B.C.-KAKWEIKEN RIVER	SPAWNING CHANNEL CONSTRUCTION	FO	3
87-4-0231E	B.C.-KAMLOOPS	FIREHALL MAINTENANCE GARAGE RENOVATIONS	TC	2
87-4-0232E	B.C.-KELOWNA	ACCESS TO HAZARD BEACON	TC	0
87-4-0379E	B.C.-KILBELLA RIVER	REARING CHANNEL CONSTRUCTION	FO	3
87-4-0069E	B.C.-KINCOLITH	WATER SVSTEM-CONSTRUCT	I NAC	3
87-4-0067E	B.C.-KITSUMKALUM	COMMUNITY INFRASTRUCTURE-CONSTRUCT	INAC	3
87-4-0070E	B.C.-KUPER ISLAND	WATER SVSTEM-CONSTRUCT	INAC	3
87-4-0375E	B.C.-MACHMEL RIVER	SIDE CHANNEL IMPROVEMENT	FO	3
87-4-0013E	B.C.-MAMQUAM R.	MASHITER SIDE CHANNEL-FISH HABITAT IMPROVEMENT	FO	2
87-4-0053E	B.C.-MARKTOSIS	SCHOOL ADDITION (4 C/R)-CONSTRUCT	INAC	2
87-4-0376E	B.C.-MITCHELL RIVER	SPAWNING CHANNEL AND FLOW CONTROL	FO	3
87-4-0064E	B.C.-MT. CURRIE	SEWAGE TREATMENT PLANT-CONSTRUCT	INAC	3
87-4-0363E	B.C.-NADINA RIVER	FISH FENCE	FO	2
87-4-0233E	B.C.-NANAIMO	CONSTRUCT ATB PARKING LOT & ASSOCIATED ROAD	TC	0
87-4-0066E	B.C.-NAUTLEV	WATER SYSTEM-CONSTRUCT	INAC	3
87-4-0378E	B.C.-NITINAT	EXPAND HATCHERY CAPACITY	FO	2
87-4-0234E	B.C.-PAT BAV	DREDGING OF SEA PLANE BASE	TC	3
87-4-0235E	B.C.-PENTICTON	CONSTRUCT NEW FIREHALL	TC	2
87-4-0236E	B.C.-PENTICTON	UPGRADE ROADS AND PARKING LOT	TC	2
87-4-0367E	B.C.-PINKUT CREEK	SPAWNING CHANNEL MAINTENANCE	FO	2
87-4-0237E	B.C.-PORT HARDV	RIVER BANK EROSION	TC	0
87-4-0061E	B.C.-PORT SIMPSON	WATER SUPPLY LINE-CONSTRUCT	I NAC	3
87-4-0015E	B.C.-POWELL R.	LANG CREEK-FISH HABITAT IMPROVEMENT	FO	2
87-4-0324E	B.C.-POWELL RIVER	CONSTRUCT PRE-FAB HOLDING ROOM	TC	2
87-4-0322E	B.C.-POWELL RIVER	INSTALL 4200M OF PARTMETER FENCE	TC	2
87-4-0242E	B.C.-PRINCE GEORGE	COMBINED SERVICE BUILDING RENOVATION	TC	2
87-4-0238E	B.C.-PRINCE GEORGE	COMMERCIAL DEVELOPMENT	TC	0
87-4-0241E	B.C.-PRINCE GEORGE	DEVELOP 12 COMMERCIAL LOTS	TC	2
87-4-0243E	B.C.-PRINCE GEORGE	PAVE EQUIPMENT PARKING LOT	TC	0
87-4-0240E	B.C.-PRINCE GEORGE	REHABILITATE STORM DRAINAGE	TC	3
87-4-0239E	B.C.-PRINCE GEORGE	REHABILITATE STORM DRAINAGE SYSTEM	TC	0
87-4-0244E	B.C.-PRINCE RUPERT	CONSTRUCT STORAGE BUILDING	TC	0
87-4-0245E	B.C.-QUESNEL	CONSTRUCT EQUIPMENT STORAGE PAD	TC	0
87-4-0246E	B.C.-QUESNEL	OVERLAY 8 WIDEN MAIN ACCESS ROAD	TC	2
87-4-0368E	B.C.-QUINSAM RIVER	HATCHERY DYKE IMPROVEMENTS	FO	2
87-4-0054E	B.C.-SAANICH	SCHOOL (8 C/R)-CONSTRUCT	I NAC	3
87-4-0073E	B.C.-SAANICH	WATER SVSTEM-CONSTRUCT	I NAC	3
87-4-0249E	B.C.-SANDSPIT	EXPAND APRON/DEMOLISH EXISTING AIR TERMINAL BUILDING	TC	2
87-4-0247E	B.C.-SANDSPIT	NEW CARPARK	TC	2
87-4-0250E	B.C.-SANDSPIT	NEW TERMINAL BUILDING	TC	2
87-4-0248E	B.C.-SANDSPIT	NEW TERMINAL FRONTAGE ROAD	TC	2

INITIAL ASSESSMENT BULLETIN
FEDERAL ENVIRONMENTAL ASSESSMENT AND REVIEW PROCESS

PAGE NO. 3

DOC. NO.	LOCATION	PROPOSAL	DEPT	DEC
87-4-0251E	B.C.-SEAL COVE	EXPAND APRON TO NORTHWEST	TC	0
87-4-0252E	B.C.-SMITHERS	COMBINED SERVICE BUILDING RENOVATION	TC	2
87-4-0256E	B.C.-SMITHERS	CONSTRUCT CFR ACCESS ROAD SOUTH END	TC	0
87-4-0257E	B.C.-SMITHERS	CONSTRUCT CFR ACCESS ROAD SOUTH END	TC	2
87-4-0321E	B.C.-SMITHERS	PAVE SECTIONS OF C.F.R. ACCESS ROAD	TC	2
87-4-0253E	B.C.-SMITHERS	PAVE SECTIONS OF CFR ACCESS ROAD	TC	2
87-4-0255E	B.C.-SMITHERS	REPLACE ENTRY ROAD	TC	0
87-4-0254E	B.C.-SMITHERS	UPGRADE ROAD & PARKING LOT	TC	2
87-4-0059E	B.C.-STONE	WASTEWATER SYSTEM-CONSTRUCT	INAC	3
87-4-0065E	B.C.-TAKLA LAKE	SEWAGE SYSTEM-CONSTRUCT	I NAC	3
87-4-0381E	B.C.-TENDERFOOT CREEK	WATER SUPPLY TO HATCHERY	FO	3
87-4-0259E	B.C.-TERRACE	AIR TERMINAL EXPANSION	TC	2
87-4-0258E	B.C.-TERRACE	EXPAND & MODIFY AIR TERMINAL BLDG.	TC	0
87-4-0371E	B.C.-TLUPANA	BOAT MOORAGE	FO	2
87-4-0060E	B.C.-TOOSEY	WASTEWATER SYSTEM-CONSTRUCT	I NAC	3
87-4-0062E	B.C.-TSIMPSEAN	COMMUNITY INFRASTRUCTURE-CONSTRUCT	I NAC	3
87-4-0058E	B.C.-UCLUELET	WATER SUPPLY SYSTEM-CONSTRUCT	I NAC	3
87-4-0355E	B.C.-VANCOUVER	NORTHEAST FINGER EXPANSION	TC	2
87-4-0010E	B.C.-VEDDER R.	PEACH CREEK-FISH HABITAT IMPROVEMENT	FO	2
87-4-0372E	B.C.-WASHWASH	SPAWNING CHANNEL CONSTRUCTION	FO	3
87-4-0362E	B.C.-WEAVER CREEK	SPAWNING CHANNEL MAINTENANCE	FO	2
87-4-0262E	B.C.-WILLIAMS LAKE	CARPARK, TERMINAL ACCESS & FRONTAGE ROAD REHAB.	TC	2
87-4-0261E	B.C.-WILLIAMS LAKE	CONSTRUCT NEW FIRE HALL	TC	0
87-4-0260E	B.C.-WILLIAMS LAKE	DEVELOP TAXIWAY	TC	2
87-4-0034E	INT.-BARBADOS	NATURAL GAS PIPELINE DESIGN & SPECIFICATION STUDY	CIDA	3
87-4-0051E	INT.-BURKINA FASO	SOIL IMPROVEMENT	CIDA	2
87-4-0039E	INT.-CARIBBEAN	REGIONAL RICE IMPROVEMENT NETWORK	CIDA	2
87-4-0277E	INT.-DOMINICA	WOODSTAVE PIPELINE	CIDA	3
87-4-0049E	INT.-EGYPT	NILE PROTECTION & DEVELOPMENT TECH. REVIEW MISSION	CIDA	2
87-4-0278E	INT.-ETHIOPIA	KETTO DEVELOPMENT PROJECT	CIDA	3
87-4-0036E	INT.-ETHIOPIA	LOCUST CONTROL PROGRAM	CIDA	3
87-4-0043E	INT.-ETHIOPIA	SMALL PROJECTS FUND (87-88)	CIDA	2
87-4-0044E	INT.-GHANA	CUSO WOMEN IN DEVELOPMENT PROJECT	CIDA	2
87-4-0279E	INT.-GUINEA	RURAL ROADS REHABILITATION	CIDA	3
87-4-0283E	INT.-GUYANA	INTERIM FORESTRY PROJECT	CIDA	2
87-4-0284E	INT.-HAITI	RURAL FORESTRY PROJECT	CIDA	2
87-4-0035E	INT.-INDIA	CHAMERA II POWER PROJECT	CIDA	3
87-4-0047E	INT.-INDONESIA	INDUSTRY FERTILIZER IV	CIDA	2
87-4-0280E	INT.-IVORY COAST	M'BENGUE HEALTH/DEVELOPMENT PH. 2	CIDA	3
87-4-0042E	INT.-JAMAICA	BRIDGES PHASE VI - PRELIMINARY DESIGN	CIDA	2
87-4-0041E	INT.-JAMAICA	LINE OF CREDIT FOR FLOOD REHABILITATION ACTIVITIES	CIDA	2
87-4-0040E	INT.-JAMAICA	NORTH COAST REEF FISHERY ENHANCEMENT PROJECT	CIDA	2
87-4-0288E	INT.-KENYA	WOODFUEL DEVELOPMENT PROJECT	CIDA	2
87-4-0281E	INT.-MALI	BAMAKO-SEGOU TRANSMISSION LINE PROJECT	CIDA	3
87-4-0285E	INT.-MALI	MACINA WELL PROJECT	CIDA	2
87-4-0048E	INT.-MOROCCO	RURAL DRINKING WATER PROJECT	CIDA	2
87-4-0037E	INT.-NIGER	GRASSHOPPER EMERGENCY	CIDA	3
87-4-0286E	INT.-SADCC	BEI RA CORRIDOR POWER SUPPLY	CIDA	2
87-4-0046E	INT.-SADCC	REGIONAL HYDROLOGICAL ASSISTANCE	CIDA	2
87-4-0282E	JNT.-ST. KITTS & NEVIS	WATER REHABILITATION & EXPANSION PROGRAM	CIDA	3
87-4-0033E	INT.-ST. LUCIA	ROSEAU BASIN WATER DEVEL. PROGRAM	CIDA	6
87-4-0287E	INT.-ST. VINCENT	FISHERIES DEVELOPMENT PH. 1	CIDA	2
87-4-0050E	INT.-THAILAND	NATURAL RESOURCE INFORMATION SYSTEMS	CIDA	2
87-4-0045E	INT.-UGANDA	UNICEF SUPPLY OF POTABLE WATER AND HANDPUMPS	CIDA	2
87-4-0038E	INT.-ZAIRE	TECHNICAL ASSISTANCE TO THE GOMA SLAUGHTERHOUSE	CIDA	3

INITIAL ASSESSMENT BULLETIN
FEDERAL ENVIRONMENTAL ASSESSMENT AND REVIEW PROCESS

PAGE NO. 4

DOC. NO.	LOCATION	PROPOSAL	DEPT	DEC
87-4-0404E	MAN.-BRANDON	MODERNIZE A MEAT PROCESSING FACILITY	RIE	3
87-4-0094E	MAN.-BROCHET	CAUSEWAY APPROACH-RECONSTRUCT	INAC	3
87-4-0360E	MAN.-CARMEN	FLOOD PROTECTION DIVERSION	AC	0
87-4-0101E	MAN.-CROSS LAKE	WATER/SEWER SYSTEM-CONSTRUCT	INAC	3
87-4-0318E	MAN.-DAUPHIN	CONSTRUCT FIRE TRAINING AREA	TC	3
87-4-0103E	MAN.-FOX LAKE	WATER/SEWER SYSTEM-UPGRADE	INAC	3
87-4-0099E	MAN.-GARDEN HILL	GARDEN HILL BRIDGE-CONSTRUCT	INAC	3
87-4-0105E	MAN.-LONG PLAIN	SCHOOL-COMPOSITE-CONSTRUCT	INAC	3
87-4-0316E	MAN.-LYNN LAKE	C.F.R. TRAINING AREA	TC	3
87-4-0190E	MAN.-MORDEN	AIRPORT EXPANSION	TC	4
87-4-0171E	MAN.-NELSON HOUSE	WATER & SEWAGE SYSTEMS-CONSTRUCT	INAC	3
87-4-0100E	MAN.-NELSON HOUSE	WATER/SEWER SYSTEM-CONSTRUCT	INAC	0
87-4-0102E	MAN.-NORWAY HOUSE	WATER/SEWER SYSTEM-CONSTRUCT	INAC	3
87-4-0006E	MAN.-PINAWA	ACCELERATOR APPLICATIONS RESEARCH FACILITY	AECL	2
87-4-0095E	MAN.-ROSEAU RIVER	SCHOOL (2400m2)-CONSTRUCT	INAC	3
87-4-0096E	MAN.-ROSEAU RIVER	WATER/SEWER SYSTEM-EXTEND	INAC	3
87-4-0104E	MAN.-SHOAL RIVER	ACCESS ROAD-RECONSTRUCT	INAC	0
87-4-0170E	MAN.-SHOAL RIVER	ACCESS ROAD-RECONSTRUCT	INAC	3
87-4-0098E	MAN.-SPLIT LAKE	COMMUNITY WATER/SEWER-CONSTRUCT	INAC	3
87-4-0406E	MAN.-TEULON	ESTABLISH A POULTRY PROCESSING FACILITY	RIE	3
87-4-0004E	MAN.-THE PAS	PASQUIA LAND RECLAMATION	AC	3
87-4-0097E	MAN.-THE PAS	RESIDENTIAL SERVICE-EXTEND	INAC	3
87-4-0384E	MAN.-WINNIPEG	BOEING GROUNDWATER HEAT PUMP	EMR	2
87-4-0407E	MAN.-WINNIPEG	ESTABLISH A NEW PLANT TO MAKE FOAM EGG CARTONS	RIE	3
87-4-0409E	MAN.-WINNIPEG	ESTABLISH FACILITY PROCESSING RAINBOW TROUT/ARCTIC CHAR	RIE	3
87-4-0408E	MAN.-WINNIPEG	ESTABLISH PLANT PRODUCE PEROGIES & OTHER FOOD PRODUCTS	RIE	3
87-4-0410E	MAN.-WINNIPEG	EXPAND A TRACTOR TRAILER COMPONENTS PLANT	RIE	3
87-4-0356E	MAN.-WINNIPEG	FINAL PHASE APRON 1 RECONSTRUCTION	TC	2
87-4-0357E	MAN.-WINNIPEG	FINAL PHASE TERMINAL ROADWAY MODIFICATION	TC	2
87-4-0403E	MAN.-WINNIPEG	MODERNIZE A MEAT PROCESSING FACILITY	RIE	3
87-4-0405E	MAN.-WINNIPEG	MODERNIZE AND EXPAND A PLASTIC PROFILES FACTORY	RIE	3
87-4-0358E	MAN.-WINNIPEG	RUNWAY 18-36 RECONSTRUCTION	TC	2
87-4-0172E	MAN.-YORK LANDING	WATER & SEWAGE SYSTEMS-CONSTRUCT	INAC	3
87-4-0307E	N.B.-CHARLO	MODIFY ACCESS ROAD	TC	2
87-4-0305E	N.B.-CHARLO	MODIFY CENTRAL HEATING SYSTEM	TC	2
87-4-0179E	N.B.-CHARLO	REPLACE U/G TANKS	TC	3
87-4-0180E	N.B.-FREDERICTON	FENCING APPROACH RUNWAY 15	TC	2
87-4-0313E	N.B.-FREDERICTON	FENCING APPROACH TO RUNWAY 15	TC	2
87-4-0181E	N.B.-FREDERICTON	FUEL SPILL COLLECTION	TC	2
87-4-0411E	N.B.-MCADAM	ESTABLISHMENT NEW PLANT MANUFACTURE GYPSUM PLASTERBOARD	RIE	3
87-4-0325E	N.S.-HALIFAX	INCREASE SHORT TERM PARKING	TC	3
87-4-0198E	N.S.-HALIFAX	INCREASE SHORT TERM PARKING	TC	3
87-4-0326E	N.S.-HALIFAX	INSTALL ELEVATOR NORTH END SECOND LEVEL	TC	2
87-4-0199E	N.S.-HALIFAX	RELOCATE AES FIRE TRAINING AREA	TC	2
87-4-0196E	N.S.-HALIFAX	REMOVE ASBESTOS AIR TERMINAL BUILDING	TC	3
87-4-0197E	N.S.-HALIFAX	SECURE BAGGAGE CLAIM DEVICES	TC	2
87-4-0393E	N.S.-NORTH SYDNEY	CONST. TERMINAL FACILITY NEW PROPANE DISTRIBUTION SYSTEM	RIE	3
87-4-0310E	N.S.-VARMOUTH	ILS/VOR CONTROL CABLE	TC	2
87-4-0391E	N.W.T.-FORT SMITH	WOOD FIRED CENTRAL HEATING PLANT	EMR	9
87-4-0320E	N.W.T.-FT. SMITH	REPLACE DIESEL AND GASOLINE TANKS	TC	2
87-4-0308E	N.W.T.-GANDER	REPLACE CONDENSATE LINE	TC	2
87-4-0311E	N.W.T.-GANDER	UPGRADE SECURITY FENCE	TC	2
87-4-0026E	N.W.T.-GRISE FIORD	HOUSING RETROFIT	EMR	2
87-4-0017E	N.W.T.-HALL BEACH	WIND GENERATOR	EMR	2
87-4-0020E	N.W.T.-HAY RIVER	ENERGY EFFICIENT HOUSES	EMR	2

INITIAL ASSESSMENT BULLETIN
FEDERAL ENVIRONMENTAL ASSESSMENT AND REVIEW PROCESS

PAGE NO. 5

DOC. NO.	LOCATION	PROPOSAL	DEPT	DEC
87-4-0016E	N.W.T.-HAY RIVER	WASTE OIL FIRED HEATING	EMR	2
87-4-0390E	N.W.T.-ITIRBILUNG FD	ADFEF, ITIRBILUNG SITE	EMR	4
87-4-0024E	N.W.T.-RAE-EDZO	WOOD FIRED BOILER INSTALLATION	EMR	2
87-4-0191E	N.W.T.-RESOLUTE BAV	APP. LIGHTING RWV 17-35. REGULATORS	TC	3
87-4-0151E	NFLD.-CONNE RIVER	COMMUNITY INFRASTRUCTURE-CONSTRUCT	INAC	3
87-4-0302E	NFLD.-DEER LAKE	CONSTRUCT STORAGE BUILDING	TC	2
87-4-0182E	NFLD.-DEER LAKE	STABILIZE SAFETY FENCE	TC	2
87-4-0306E	NFLD.-DEER LAKE	UPGRADE FIRE TRAINING AREA	TC	3
87-4-0183E	NFLD.-GANDER	CONSTRUCT GUARD HOUSE-NEW GATE	TC	2
87-4-0184E	NFLD.-GOOSE BAV	CONSTRUCT NEW CIVIL A/P COMPLEX	TC	2
87-4-0304E	NFLD.-GOOSE BAV	PURCHASE FUEL TANDS	TC	2
87-4-0392E	NFLD.-RODDICKTON	WOOD CHIP FIRED ELEC. GEN. PLANT	EMR	2
87-4-0312E	NFLD.-ST. JOHN'S	A.T.B. COMPLEX	TC	4
87-4-0303E	NFLD.-ST. JOHN'S	CONSTRUCT BLAST PADS	TC	2
87-4-0185E	NFLD.-ST. JOHN'S	PAVE VARIOUS AREAS	TC	2
87-4-0309E	NFLD.-ST. JOHN'S	REPLACE FENCE VOR	TC	2
87-4-0186E	NFLD.-STEPHENVILLE	REPLACE U/G FUEL STORAGE TANK	TC	3
87-4-0187E	NFLD.-WILLIAMS HARBOUR	CONSTRUCT AIRSTRIP & RELATED FACILITIES	TC	4
87-4-0167E	ONT.-AKWESASNE	AKWESASNE MOHAWK SCHOOL ADDITION-CONSTRUCT	INAC	3
87-4-0166E	ONT.-AKWESASNE	CHENIAL SCHOOL ADDITION-CONSTRUCT	INAC	3
87-4-0163E	ONT.-AKWESASNE	ELEMENTARY SCHOOL-RENOVATE	INAC	3
87-4-0106E	ONT.-ATTAWAPISKAT	FLOOD MITIGATION ALTERNATIVES-STUDY	INAC	4
87-4-0111E	ONT.-ATTAWAPISKAT	WATER TREATMENT PLANT-REPLACE	INAC	3
87-4-0162E	ONT.-BIG GRASSY	COMMUNITY WATER/DRAINAGE-DESIGN	INAC	3
87-4-0298E	ONT.-CARP	CONSTRUCTION OF A HANGAR - PRIVATE SECTOR	TC	3
87-4-0168E	ONT.-CHRISTIAN ISLAND	ELEMENTARY SCHOOL ADDITION-CONSTRUCT	INAC	3
87-4-0113E	ONT.-COUCHICHING	FROG CREEK SUBDIVISION INFRASTRUCTURE-CONSTRUCT	INAC	3
87-4-0117E	ONT.-FORT HOPE	COMMUNITY ELECTRIFICATION (DIESEL)-CONSTRUCT	INAC	3
87-4-0164E	ONT.-FORT HOPE	SCHOOL ADDITION/WASTEWATER TREATMENT-CONSTRUCT	INAC	3
87-4-0289E	ONT.-GODERICH	NEW RUNWAY, TAXIWAY CIVIL WORKS AND LIGHTING	TC	0
87-4-0201E	ONT.-HAMILTON	ATB-LANDSCAPING	TC	0
87-4-0290E	ONT.-HAMILTON	CONSTRUCTION OF 2 WAREHOUSE BUILDINGS ON A LEASED LOT	TC	2
87-4-0202E	ONT.-HAMILTON	DEVELOP COMMERCIAL AVIATION AREA	TC	2
87-4-0200E	ONT.-HAMILTON	MAIN ACCESS ROAD/CAR PARK	TC	0
87-4-0204E	ONT.-KAPUSKASING	CONST. EQUIP. GARAGE WITH BAY FIREHALL	TC	0
87-4-0203E	ONT.-KAPUSKASING	UPGRADE SECURITY FENCING	TC	2
87-4-0116E	ONT.-KASABONIKA	WATER/SEWAGE SERVICES-CONSTRUCT	INAC	3
87-4-0123E	ONT.-KASHECHEWAN	SCHOOL ELEMENTARY (7 C/R)-CONSTRUCT	INAC	2
87-4-0107E	ONT.-KASHECHEWAN	SEWAGE TREATMENT/DISPOSAL-CONSTRUCT	INAC	3
87-4-0118E	ONT.-LAKE HELEN	COMMUNITY INFRASTRUCTURE-EXPANSION	INAC	3
87-4-0119E	ONT.-LANSDOWNE HOUSE	GRANDMOTHER'S POINT ACCESS ROAD-CONSTRUCT	INAC	3
87-4-0205E	ONT.-LONDON	AIRLINE DEVELOPMENT AREA	TC	0
87-4-0206E	ONT.-LONDON	CONSTRUCT COVERED BAGGAGE	TC	2
87-4-0299E	ONT.-LONDON	CONSTRUCTION OF AN AIRCRAFT HANGAR AND OFFICES	TC	3
87-4-0291E	ONT.-LONDON	PROVIDE GRAVEL RD., GAS, WATER, SEWER CONNECTIONS LOT C-6	TC	2
87-4-0108E	ONT.-MISSISSAUGA	COMMUNITY INFRASTRUCTURE-CONSTRUCT	INAC	3
87-4-0207E	ONT.-MUSKOKA	PROPOSAL TO INSTALL NATURAL GAS SERVICE	TC	2
87-4-0208E	ONT.-NORTH BAY	REPLACE UNHEATED STORAGE BUILDING	TC	2
87-4-0300E	ONT.-OSHAWA	INSTALL SECURITY FENCE	TC	3
87-4-0292E	ONT.-OSHAWA	REPLACE FEC AND CONTROL PANEL	TC	2
87-4-0169E	ONT.-PEAWANUCK	COMMUNITY INFRASTRUCTURE-CONSTRUCT	INAC	3
87-4-0301E	ONT.-PICKERING	BELL CAN. 3M CORRIDOR OVERLAID TRANS CAN PIPELINE EASMT.	TC	3
87-4-0315E	ONT.-RED LAKE	C.F.R. TRAINING AREA	TC	3
87-4-0317E	ONT.-RED LAKE	ESSO FUEL FACILITY UPGRADING	TC	3
87-4-0209E	ONT.-SARNIA	PROPOSED AGRICULTURAL LEASE OF LAND	TC	2

INITIAL ASSESSMENT BULLETIN
FEDERAL ENVIRONMENTAL ASSESSMENT AND REVIEW PROCESS

PAGE NO. 6

DOC. NO.	LOCATION	PROPOSAL	DEPT	DEC
87-4-0210E	ONT.-SARNIA	URGENT FENCING SECURITY REQUIREMENTS	TC	2
87-4-0213E	ONT.-SAULT STE. MARIE	DEVELOP GA PHASE 1	TC	0
87-4-0295E	ONT.-SAULT STE. MARIE	EXPAND EXISTING HANGAR-PRIVATE SECTOR	TC	2
87-4-0294E	ONT.-SAULT STE. MARIE	EXPAND EXISTING HANGAR-PRIVATE SECTOR	TC	2
87-4-0214E	ONT.-SAULT STE. MARIE	INSTALL CULVERT	TC	0
87-4-0211E	ONT.-SAULT STE. MARIE	RESTORE RUNWAY 11-29. TAXIS F.G. CONCRETE SLABS	TC	0
87-4-0212E	ONT.-SAULT STE. MARIE	UPGRADE WATER SUPPLY	TC	0
87-4-0109E	ONT.-SERPENT RIVER	INDUSTRIAL POLLUTION (CUTLER ACID) SITE RECLAMATION	INAC	3
87-4-0122E	ONT -SIX NATIONS	SCHOOL ELEMENTARY (6 C/R)-CONSTRUCT	INAC	2
87-4-0215E	ONT.-ST. CATHARINES	CONSTRUCTION OF HANGER	TC	2
87-4-0293E	ONT.-SUDBURY	EXPAND EXISTING HANGER-PRIVATE SECTOR	TC	2
87-4-0115E	ONT.-SUMMER BEAVER	ELECTRIFICATION-OIL STORAGE-CONSTRUCT	INAC	3
87-4-0192E	ONT.-THUNDER BAY	RAMP PROJECT	TC	2
87-4-0296E	ONT.-TIMMINS	AMENDED HANGAR CONSTRUCTION-PRIVATE SECTOR	TC	2
87-4-0297E	ONT.-TIMMINS	CONSTRUCTION OF A HANGAR - PRIVATE SECTOR	TC	2
87-4-0120E	ONT.-WABIGOON LAKE	SCHOOL ELEMENTARY-CONSTRUCT	INAC	3
87-4-0121E	ONT.-WAPEKEKA	COMMUNITY ELECTRIFICATION (DIESEL)-CONSTRUCT	INAC	3
87-4-0112E	ONT.-WASHAGAMIS BAY	COMMUNITY INFRASTRUCTURE-CONSTRUCT	INAC	3
87-4-0114E	ONT.-WEAGAMOW	WATER INTAKE-RELOCATE	INAC	3
87-4-0165E	ONT.-WEAGAMOW LAKE	COMMUNITY WATER SYSTEM-CONSTRUCT	INAC	3
87-4-0110E	ONT.-WEST BAY	COMMUNITY INFRASTRUCTURE-CONSTRUCT	INAC	3
87-4-0217E	ONT.-WINDSOR	RELOCATE EMPLOYEE PARKING LOT	TC	2
87-4-0218E	ONT.-WINDSOR	RESTORE APRON 2. ASSOCIATED LIGHTING & DRAINAGE	TC	0
87-4-0216E	ONT. -WINDSOR	SECURITY FENCING	TC	2
87-4-0389E	P.E.I.-ABRAMS VILLAGE	WOOD BIOMASS CONVERSION PROGRAM	EMR	2
87-4-0031E	P.E.I.-ALBERTON	WOOD BIOMASS CONVERSION PROGRAM	EMR	2
87-4-0414E	P.E.I.-AUGUSTINE COVE	EXPANSION OF A POTATO PACKING FACILITY	RJE	3
87-4-0021E	P.E.I.-BELFAST	WOOD BIOMASS CONVERSION PROGRAM	EMR	2
87-4-0412E	P.E.I.-CHARLOTTETOWN	MODERNIZE MILK PROCESSING PLANT	RIE	3
87-4-0028E	P.E.I.-CHARLOTTETOWN	WOOD BIOMASS CONVERSION PROGRAM	EMR	2
87-4-0387E	P.E.I.-EBENEZER	WOOD BIOMASS CONVERSION PROGRAM	EMR	2
87-4-0388E	P.E.I.-KINROSS	WOOD BIOMASS CONVERSION PROGRAM	EMR	2
87-4-0030E	P.E.I.-LOWER MONTAGNE	WOOD BIOMASS CONVERSION PROGRAM	EMR	2
87-4-0386E	P.E.I.-LOWER MONTAGNE	WOOD BIOMASS CONVERSION PROGRAM	EMR	2
87-4-0019E	P.E.I.-MEADOWBANK	WOOD BIOMASS CONVERSION PROGRAM	EMR	2
87-4-0032E	P.E.I.-MEADOWBANK	WOOD BIOMASS CONVERSION PROGRAM	EMR	2
87-4-0029E	P.E.I.-MONTAGNE	WOOD BIOMASS CONVERSION PROGRAM	EMR	2
87-4-0413E	P.E.I.-O'LEARY	ESTABLISH POTATO PACKING FACILITY	RIE	3
87-4-0027E	P.E.I.-SHERWOOD	WOOD BIOMASS CONVERSION PROGRAM	EMR	2
87-4-0018E	P.E.I.-SOURIS	WOOD BIOMASS CONVERSION PROGRAM	EMR	2
87-4-0023E	P.E.I.-SOURIS	WOOD BIOMASS CONVERSION PROGRAM	EMR	2
87-4-0385E	P.E.I.-ST. TIMOTHY	WOOD BIOMASS CONVERSION PROGRAM	EMR	2
87-4-0022E	P.E.I.-SUMMERSIDE, ALBERTON	WOOD BIOMASS CONVERSION PROGRAM	EMR	2
87-4-0025E	P.E.I.-TIGNISH	WOOD BIOMASS CONVERSION PROGRAM	EMR	2
87-4-0399E	QUE.-ACTON VALE AND WICKAM	EXPANSION OF A CARPET FACTORY	RIE	3
87-4-0333E	QUE.-BAIE-COMEAU	VEHICLE SHELTER ADJACENT TO MAINTENANCE GARAGE	TC	2
87-4-0394E	QUE.-BELOEIL	MOD. FACILITIES NEW DISTRIBUTION SYSTEM FOR EXPLOSIVES	RIE	3
87-4-0135E	QUE.-BETSAMITES	WASTEWATER TREATMENT PLANT-CONSTRUCT	INAC	3
87-4-0263E	QUE.-BROMONT	REPAIR AND CONSTRUCTION OF ROADWAY	TC	1
87-4-0264E	QUE.-CAUSAPSCAL	RUNWAY PAVING	TC	1
87-4-0265E	QUE.-CHARLEVOIX	REPLACE TERMINAL HEATING SYSTEM	TC	2
87-4-0335E	QUE.-CHEVERY	REPAIR TREATMENT SYSTEM	TC	3
87-4-0195E	QUE.-DORVAL	CONSTRUCT FIREHALL	TC	0
87-4-0398E	QUE.-DRUMMONDVILLE	EXPANSION OF A CARPET FACTORY	RIE	3
87-4-0130E	QUE.-EASTMAIN	ELECTRICAL GENERATOR-ADDITION	INAC	3

INITIAL ASSESSMENT BULLETIN
FEDERAL ENVIRONMENTAL ASSESSMENT AND REVIEW PROCESS

PAGE NO. 7

DOC. NO.	LOCATION	PROPOSAL	DEPT	DEC
87-4-0329E	QUE.-EASTMAIN	REGRAVEL APRON AND TAXIWAYS	TC	
87-4-0330E	QUE.-EASTMAIN	STABILIZE SHOULDERS OF APRON AND TAXIWAYS	TC	
87-4-0400E	QUE.-GRAND-MERE	ESTABLISHMENT OF A TEXTILE PLANT	RIE	
87-4-0397E	QUE.-HUNTINGDON	EXPANSION OF A TEXTILE PLANT	RIE	
87-4-0266E	QUE.-JOLIETTE	RUNWAY PAVING	TC	
87-4-0159E	QUE.-KAHNAWAKE	COMMUNITY INFRASTRUCTURE-EXTEND	INAC	
87-4-0160E	QUE.-KAHNAWAKE	COMMUNITY INFRASTRUCTURE-EXTEND	INAC	
87-4-0161E	QUE.-KAHNAWAKE	SOLID WASTES DUMP-CLOSE	INAC	
87-4-0137E	QUE.-KI PAWA	SEWAGE SYSTEM-EXTEND	I NAC	
87-4-0402E	QUE.-KNOWLTON	MODERNIZATION OF A PLANT FOR CHEMICAL PRODUCTS	RIE	
87-4-0332E	QUE.-KUUJJUAQ	REGRAVEL RUNWAY 13-31	TC	
87-4-0331E	QUE.-KUUJJUAQ	REPLACE 6 FURNACES	TC	
87-4-0267E	QUE.-KUUJJUAQ	RELOCATE MAINTENANCE GARAGE	TC	
87-4-0124E	QUE.-LAC SIMON	SEWER SYSTEM-REHABILITATE	INAC	
87-4-0127E	QUE.-LAC SIMON	WATER/ROADS/DRAINAGE-IMPROVE	I NAC	
87-4-0268E	QUE.-LEBEL SUR QUEVILLON	ZONING AND CONSTRUCTION OF TRAFFIC AREA	TC	
87-4-0154E	QUE.-LORETTE	COMMUNITY INFRASTRUCTURE (65 LOTS)-EXTEND	INAC	
87-4-0150E	QUE.-LORETTE	RESERVE TERRITORY EXTENSION PURCHASE	INAC	
87-4-0131E	QUE.-MALIOTENAM	ACCESS ROAD (BIO-DISK)-IMPROVE	I NAC	
87-4-0144E	QUE.-MALIOTENAM	COMMUNITY INFRASTRUCTURE (30 LOTS)-EXTEND	INAC	
87-4-0269E	QUE.-MANIWAKI	INSTALL APPROACH LIGHTS	TC	
87-4-0142E	QUE.-MANUAN	COMMUNITY INFRASTRUCTURE (25 LOTS) EXTEND	INAC	
87-4-0140E	QUE.-MANUAN	WASTE WATER TREATMENT PLANT-CONSTRUCT	INAC	
87-4-0157E	QUE.-MANUAN	WASTEWATER TREATMENT PLANT-REPAIR	INAC	
87-4-0155E	QUE.-MARIA	COMMUNITY INFRASTRUCTURE (17 LOTS)-CONSTRUCT	INAC	
87-4-0148E	QUE.-MARIA	WYAWAP SCHOOL ADDITION-CONSTRUCT	I NAC	
87-4-0158E	QUE.-MASTEWIATCH	WATER DISTRIBUTION SYSTEM-EXTEND	INAC	
87-4-0336E	QUE.-MONT-JOLI	MODIFY AND RELOCATE FUEL SYSTEM	TC	
87-4-0132E	QUE.-NATASHOUAN	PRIMARY SCHOOL-CONSTRUCT	INAC	
87-4-0156E	QUE.-NATASHOUAN	SOLID WASTES DUMP	I NAC	
87-4-0141E	QUE.-NATASHOUAN	WASTE WATER TREATMENT PLANT-CONSTRUCT	I NAC	
87-4-0334E	QUE.-NATASHOUAN	WATER SUPPLY	TC	
87-4-0146E	QUE.-OBEDJIWAN	COMMUNITY INFRASTRUCTURE (40 LOTS)-EXTEND	I NAC	
87-4-0139E	QUE.-OBEDJIWAN	ELECTRICAL DISTRIBUTION-EXTEND	INAC	
87-4-0134E	QUE.-OBEDJIWAN	ELECTRICAL GENERATOR-REPLACE	I NAC	
87-4-0149E	QUE.-OBEDJIWAN	MISHKA SCHOOL ADDITION-CONSTRUCT	INAC	
87-4-0143E	QUE.-OBEDJIWAN	WASTE WATER TREATMENT PLANT-CONSTRUCT	INAC	
87-4-0270E	QUE.-PABOK	WIDEN RUNWAY	TC	
87-4-0271E	QUE.-QUEBEC	REPLACE ELECTRICAL LINES	TC	
87-4-0328E	QUE.-QUEBEC	RESTAURATION OF WATER SUPPLY SYSTEM	TC	
87-4-0395E	QUE.-QUEBEC CITY	CONST. TERMINAL FACILITY NEW PHOSPHORUS DISTRIB. SYSTEM	RIE	
87-4-0126E	QUE.-RAPID LAKE	QUEBEC HYDRO TRANSMISSION NETWORK-CONNECT	INAC	
87-4-0125E	QUE.-RESTIGOUCHE	SEWAGE TREATMENT PLANT-RECONSTRUCT	I NAC	
87-4-0152E	QUE.-RESTIGOUCHE	WATER SUPPLY SYSTEM-STUDY	INAC	
87-4-0147E	QUE.-ROMAINE	COMMUNITY INFRASTRUCTURE (20 LOTS)-EXTEND	I NAC	
87-4-0401E	QUE.-SAINT-LAURENT	EXPANSION & RELOCATION OF A PLANT FOR CHEMICAL PRODUCTS	RIE	
87-4-0396E	QUE.-SAINT-PASCAL	ESTABLISHMENT OF A TANNERY	RIE	
87-4-0272E	QUE.-SCHEFFERVILLE	RECOVER RUNWAY 18-36 AND TAXIWAY	TC	
87-4-0145E	QUE.-SEVEN ISLANDS	COMMUNITY INFRASTRUCTURE (40 LOTS)-EXTEND	I NAC	
87-4-0273E	QUE.-ST. HUBERT	RECOVER RUNWAY 06D-24G AND TAXIWAY	TC	
87-4-0274E	QUE.-ST. HUBERT	UPGRADE STORM DRAINAGE	TC	
87-4-0153E	QUE.-TEMISKAMING	WASTEWATER TREATMENT PLANT-CONSTRUCT	I NAC	
87-4-0327E	QUE.-VAL D'OR	FUEL STATION	TC	
87-4-0337E	QUE.-VAL D'OR	REPAIR ROADS	TC	
87-4-0136E	QUE.-WASKAGANISH	OIL STORAGE DIKE-RECONSTRUCTION	INAC	

INITIAL ASSESSMENT BULLETIN
FEDERAL ENVIRONMENTAL ASSESSMENT AND REVIEW PROCESS

PAGE NO. 8

DOC. NO.	LOCATION	PROPOSAL	DEPT	DEC
87-4-0128E	QUE.-WEYMONTACHIE	ACCESS ROAD-CONSTRUCT	I NAC	3
87-4-0138E	QUE.-WEYMONTACHIE	ELECTRICAL DISTRIBUTION-EXTEND	INAC	
87-4-0133E	QUE.-WEYMONTACHIE	ELECTRICAL GENERATOR-REPLACE	I NAC	
87-4-0129E	QUE.-WEYMONTACHIE	HOUSES (16)-CONSTRUCT	I NAC	
87-4-0361E	SASK.-ASSINIBOIA	WATER SUPPLY DAM	AC	2
87-4-0086E	SASK.-CARROT RIVER	SCHOOL ADDITION-CONSTRUCT	I NAC	
87-4-0174E	SASK.-COTE	ROAD-CONSTRUCT	I NAC	2
87-4-0173E	SASK.-COTE	WATER SYSTEM FEASIBILITY-STUDY	I NAC	2
87-4-0091E	SASK.-COWENESS	ROAD-RECONSTRUCT	I NAC	
87-4-0092E	SASK.-FISHING LAKE	ROAD-RECONSTRUCT	I NAC	
87-4-0082E	SASK.-FOND DU LAC	SCHOOL NEW-CONSTRUCT	I NAC	
87-4-0003E	SASK.-HUMBOLDT	WATER SUPPLY IMPROVEMENTS	AC	
87-4-0085E	SASK.-JAMES SMITH	SCHOOL ADDITION-CONSTRUCT	I NAC	
87-4-0088E	SASK.-KAMKEWISTAHAW	WATER TREATMENT	I NAC	
87-4-0359E	SASK.-KAMSACK	WATER SUPPLY WEIR	AC	
87-4-0193E	SASK.-LANGRUTH	RAMP PROJECT	TC	2
87-4-0001E	SASK.-NORTH MINISTER	EFFLUENT IRRIGATION SYSTEM	AC	
87-4-0084E	SASK.-NUT LAKE	NUT LAKE WATER SYSTEMS-CONSTRUCT	INAC	
87-4-0090E	SASK.-OCHAPOWACE	ROADSIDE SLOPES QU'APPELLE VALLEY-STABILIZATION	I NAC	
87-4-0083E	SASK.-ONE ARROW	SCHOOL NEW (INCL. SERVICES)-CONSTRUCT	INAC	
87-4-0175E	SASK.-ONE ARROW	SCHOOL WITH INFRASTRUCTURE-CONSTRUCT	I NAC	3
87-4-0080E	SASK.-PELICAN NARROWS	COMPOSITE SCHOOL NEW-CONSTRUCT	I NAC	
87-4-0089E	SASK.-PETER POND LAKE	SCHOOL ELEMENTARY-CONSTRUCT	JNAC	
87-4-0007E	SASK.-RABBIT LAKE	EAGLE POINT MINE DEVELOPMENT	ELD	2
87-4-0087E	SASK.-RED PHEASANT	SCHOOL NEW-CONSTRUCT	I NAC	
87-4-0314E	SASK.-SASKATOON	UPGRADE FIRE TRAINING AREA	TC	
87-4-0093E	SASK.-THE KEY	ROAD-RECONSTRUCT	INAC	3
87-4-0081E	SASK.-WATERHEN LAKE	SCHOOL RENOVATION/ADDITION	INAC	
87-4-0194E	SASK.-YORKTON	RESTORE 03-21, PAVE & EXTEND	TC	

Department names in this issue of the Bulletin are abbreviated as follows:

TC =TRANSPORT CANADA

CIDA=CANADIAN INTERNATIONAL DEVELOPMENT AGENCY

FO =FISHERIES& OCEANS

AECL=ATOMIC ENERGY OF CANADA LTD.

INAC=INDIAN & NORTHERN AFFAIRS CANADA

ELD =ELDORADO RESOURCES LTD.

RIE=REGIONAL INDUSTRIAL EXPANSION

EMR=ENERGY, MINES & RESOURCES CANADA