



WHAT the **EMERGENCY** **PROTECTION ORDER** MEANS to YOU



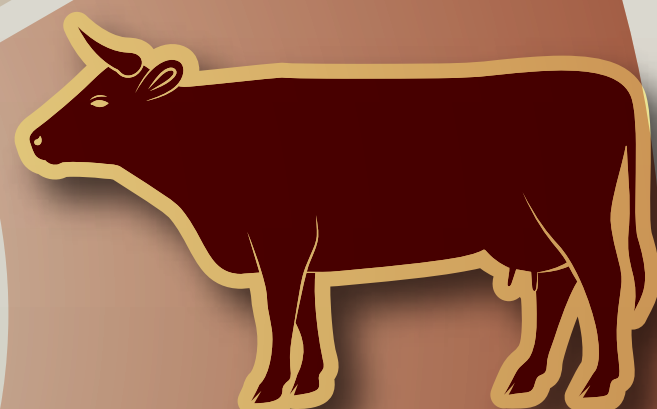
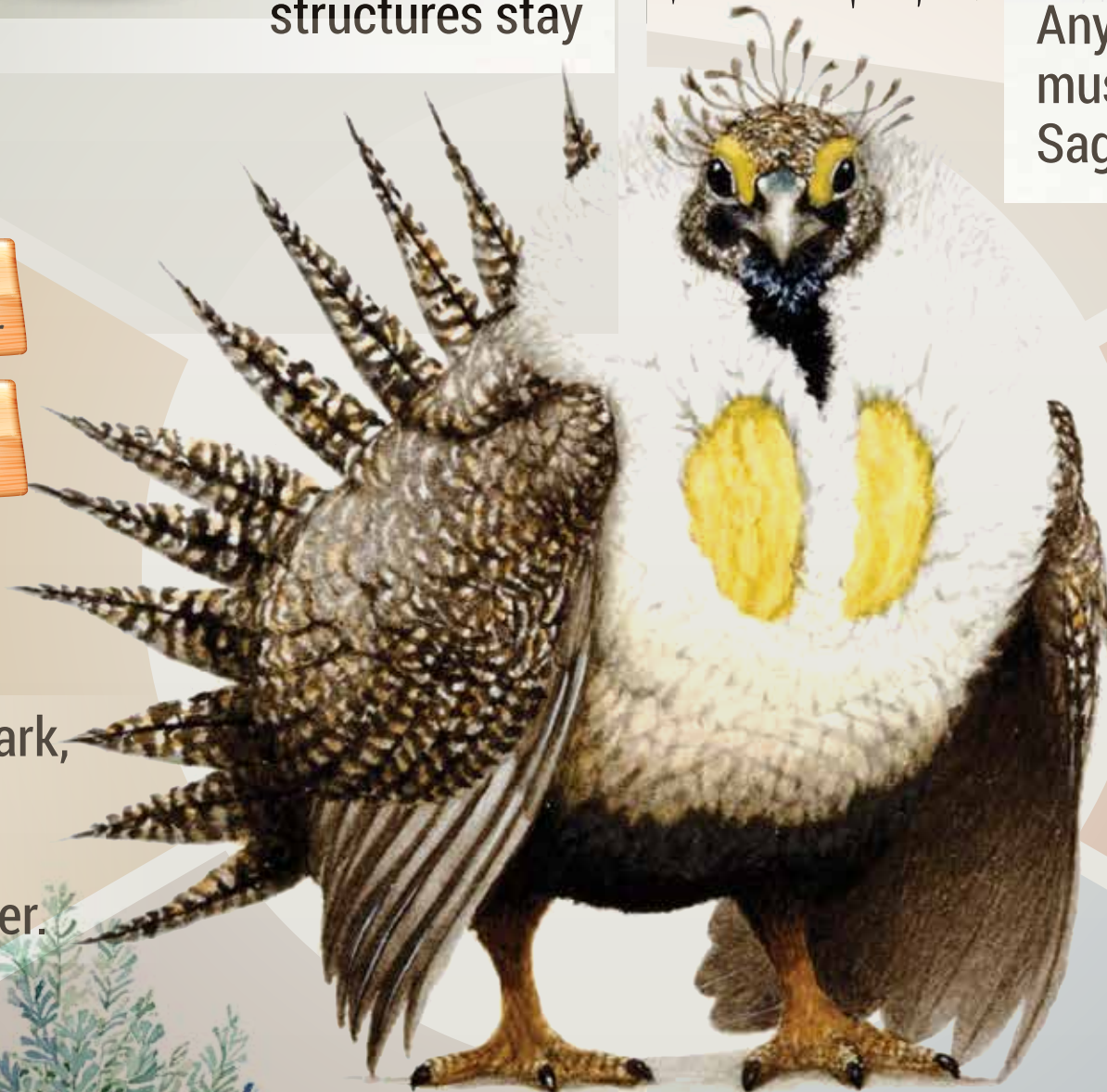
Existing
structures stay



Any new fences
must be Greater
Sage-Grouse friendly



Grasslands National Park,
community pastures,
other Crown lands
are included in the order.

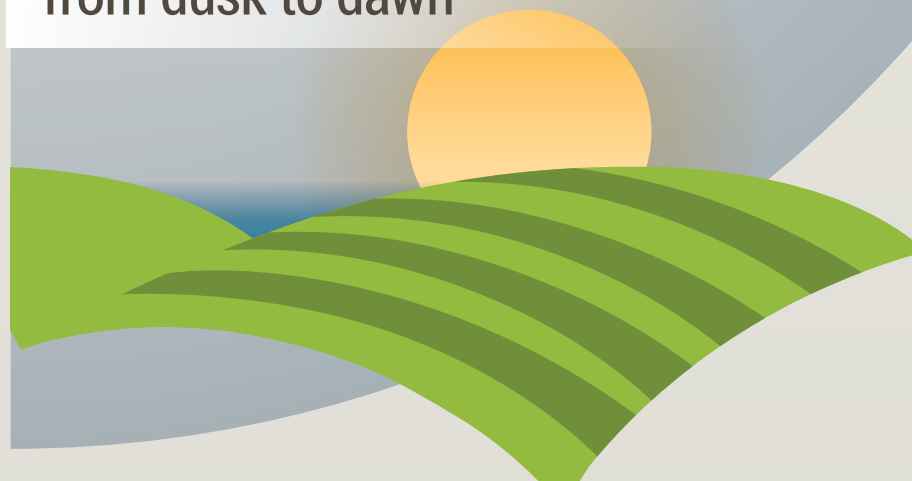


Stocking rates
and grazing
are not regulated



By keeping the sagebrush
on your land, you support
the Sage-Grouse.

In April and May,
keep the noise down
from dusk to dawn



Assistance may be available through
the Habitat Stewardship Program
to fund voluntary stewardship