



CANADIAN ARMED FORCES - DEPUTY RETURNING OFFICERS TRAINING

**2015 FEDERAL
GENERAL ELECTION
(Military Vote: 5 Oct 2015 to 10 Oct 2015)**

DRO Legal Adviser and Administrative Support

- LCol R. Strum, AJAG Halifax
- Mrs. S. Touchette, DLaw/CBP&E (E&E)
- Mrs. Jeannine Lépine, DLaw/CBP&E (E&E)

LECTURE OUTLINE

I – Introduction

Overview

Election officials: Role and Responsibilities

II – Duties

Commanding Officers

Liaison Officers - General duties

Deputy Returning Officers

III - Service voting procedure

Qualifications and entitlements to vote

Statement of ordinary residence

Method to take the service vote

Procedure for casting vote

Calendar - Crucial dates for Liaison Officers/Deputy Returning Officers

Financial administration

Political activities by Canadian Forces members – Restrictions

Questions

Contacts - Numbers and addresses

INTRODUCTION

1. Your CO has appointed you to establish the polling station and take the vote of CAF electors.
2. You must know the procedures for CAF voting.
3. You must be impartial in performing your duties, and answer questions related to the electoral process only.

OVERVIEW

Canadian Armed Forces (CAF) electors vote at federal general elections in one of two ways:

- a) under the Special Voting Rules (SVRs) - at a service polling station for a candidate running in the electoral district encompassing the selected place of ordinary residence reflected on the elector's Statement of Ordinary Residence (SOR); or
- b) if a elector has not voted under the SVRs - at a civilian polling station but only if it is in the electoral district shown on his/her SOR and he/she ordinarily resides in that electoral district as of polling day.

KEY PLAYERS

Chief Electoral Officer (CEO)

**Special Voting Rules Administrator (SVRA) and
the Military Vote Coordinator (MVC)**

Coordinating Officer (Coord O)

Liaison Officers (LOs)

Commanding Officers (COs)

Deputy Returning Officers (DROs)

Admin/Fin Clerks (RMS)

CHIEF ELECTORAL OFFICER

Incumbent: Mr. Marc Mayrand

The Chief Electoral Officer (CEO)

- supervises the conduct of elections
- ensures that all election officers act with fairness and impartiality
- issues administrative instructions
- implement public education and information programs

(ss.16 &18 CEA)

SPECIAL VOTING RULES

ADMINISTRATOR (SVRA) – ELECTIONS

CANADA

Incumbent: Mr. Paul Legault, at Elections Canada (EC)

Assistant – Military Vote Coordinator – Mr. Josh Barber, at Elections Canada

The SVRA

1. obtains from the LOs the list of names of electors from each CAF unit
2. obtains from the LOs the list of names of DROs that is provided by COs
3. distributes the election materials and the list of candidates
4. receives, validates, and sorts the ballots marked by CAF electors
5. proceeds with the counting of the votes of electors on civilian polling day in Ottawa (19 Oct 15), and
6. communicates the results of the votes cast.

DND COORDINATING PERSONNEL - MANDATE

DND Coordinating Officer (DND Coord Offr): **Col V. Joshi**

DND Deputy Coordinating Officer (DND Deputy Coord Offr): **LCol R. Strum**

Elections Administration Officer (Elections Adm Offr): **Mrs. Suzanne Touchette**

Assistant to the Elections Admin Officer (Elections Coord): **Mrs. J. Lépine**

- The Minister of National Defence (MND) appointed the DND Coord Offr to work both during and between elections with the CEO.
- the DND Coord Offr informs service members, through a CANELECTGEN, of the terms and conditions of voting.

LIAISON OFFICERS AND SUPPORT STAFF

- LOs are appointed by the Minister
- LOs and support staff cooperate with the CEO and Coord Offr in the administration of the vote of CAF electors
- LOs liaise between COs and DROs and with SVRA
- The main functions of LOs are to ensure that every CAF elector receives information concerning the voting procedures, that they are given the opportunity to vote, and that the completed ballots are properly transported back to the SVRA in Ottawa ON TIME (19 OCT 15, by 18h00).

*** IF YOU HAVE ANY QUESTIONS ABOUT THE SPECIAL VOTING RULES (SVR) AND PROCEDURES, OR IF YOU ENCOUNTER DIFFICULTIES – CONTACT YOUR LO.**

COMMANDING OFFICERS

(Statutory duties of Commanding Officers)

Within seven days after writs are issued, the CO

1. Publishes a notice of election in unit orders and posts it prominently.
2. Prepares an alphabetical list of all CAF electors serving in or attached to the CO's unit, based on the SORs held in unit records (s.205(1)(b) CEA).
3. Establishes polling stations, including joint polling stations or mobile polls as needed; notifies the appropriate LO of the number and location of polling stations, and arrangements for mobile polls.
4. Designates DROs for each station.
5. Provides a list of the names/ranks of DROs and electors to CEO/SVRA.
6. Provides the facilities and resources for the vote.
7. Fixes voting dates and times.
8. Publishes a notice of voting dates/times and places.

(ss.204-209 CEA)

COMMANDING OFFICERS

(Statutory duties of Commanding Officers)

Upon receipt of elections materials

- Acknowledge receipt
- Distribute materials to DROs in sufficient quantities

Additional Responsibilities

1. Post lists of candidates in conspicuous places
2. Provide special mailing facilities/support
3. With LO, arrange transportation of ballots and materials
4. Protect secrecy of the ballots
5. Send the ballots to the SVRA in Ottawa, by **priority post** or other service means as often as possible

(ss.204-209 CEA)

DUTIES OF DEPUTY RETURNING OFFICERS

- Make sure that you review this DRO training presentation – to ensure performance of duties is in accordance with the **Canadian Elections Act**
- Be familiar with ***DRO Manual*** (Voting by CAF electors) (EC 78130 (05/15) – (N.B. This publication is available on the JAG WEBSites)
- Be familiar with ***The Guide to Federal Electoral Districts*** and ***Street Indexes***
- Establish telephone/FAX communication directly with your Liaison Officer a.s.a.p. (communicate with, inform and seek advice from your LO)
- Receive all election material, ensure quantities are sufficient, count ballot papers and return by fax and mail the white copy of the supply distribution record (FORM EC 78190) to SVRA
- control voting materials until returned to CO
- Assign personnel for mobile polling stations (one DRO for mobile polling stations is sufficient). Many Reserve Force units have full-time members
- Know and comply with the dates and times during which polling stations must be opened (consult notice of election issued by the unit's CO)

DUTIES OF DEPUTY RETURNING OFFICERS

- Set up a polling station to ensure the elector can vote in secrecy
 - Ensure that you will have a **phone** at your polling station and an **assistant** to help you deal with list of CAF electors and admin duties.
 - personally supervise the operations in the polling station
 - personally take the vote of all CAF electors
- (N.B. This task is not to be left to your assistant)
- execute SORs where necessary for Res F members
 - Keep available for consultation: one set of street indexes, one guide to electoral districts, one list of candidates, and one list of electors
 - Ensure that voting instructions card for Canadian Forces Electors (Form EC78120 (01/02)) are put in conspicuous places
 - protect secrecy of vote and maintain decorum at the polling station
 - Grant access to voting area to authorized representatives of political parties. The representative should have an authorization form signed by the political candidate (form EC 78070)

DUTIES OF DEPUTY RETURNING OFFICERS

- Ensure every eligible voter has the opportunity to vote, including:
 - incarcerated members
 - incapacitated members (physical disability, hospitalized members)
 - members on TD or leave in your area

DUTIES OF DEPUTY RETURNING OFFICERS

- IMPORTANT – Outer envelope - Ensure the outer envelope:
 - is personally signed and dated by the elector
 - reflects the elector's name and the correct electoral district of the CAF elector
- MOST CRITICAL - ensure that all completed ballots reach the SVRA NO LATER THAN 1800 hrs on civilian polling day (19 Oct 15) - send ballots by **priority post**, courier or CAF means of transportation as often as practicable
- NOTE: Do not include unused/spoiled ballots or other voting material with the completed ballots marked by CAF electors.

DUTIES OF DEPUTY RETURNING OFFICER AFTER VOTING IS COMPLETED

- By 16 Oct 15- send your after action report to LO through Sr DRO
- By 29 Oct 15- return all unused material including ballot stubs, and spoiled ballots to the SVRA (N.B. not with completed ballots)
- By 19 Nov15- DROs and LOs - send detailed expense report to Ottawa Elections HQ Fin Clerk (**Sgt S. Hamelin**) (through Sr LO of voting area)
- Send your after action report to your local LO, through your Sr DRO, detailing relevant information concerning the taking of the vote
- **Do Not send SORs completed at the polling station by Reserve Force members to the SVRA/CEO (Elections Canada) for validation. These SORs are to be retained in Unit file**

(ss.210-219 CEA)

Voting by CAF electors – 2 brochures to understand the process

- 1. CF electors can vote at their unit (EC 78003 (04/2015): explain when and where to vote, how the vote works, counting the ballots
- 2. You can vote by mail (EC 78011 (06/2014): relates to civilian family members living abroad
- (Note: Brochures EC 78003 (04/2015) and EC 78011 (06/2014) were distributed in large numbers in your region)

SERVICE VOTING PERIOD

➤ Service voting must occur during the period of the 14th and 9th day before civilian polling day (i.e. 05 Oct to 10 Oct 15 inclusively). A CO must determine when, during that period, polls will be open.

➤ **Minimum** requirements:

At least 3 days and at least 3 hours per day (ss.205(3) and 208 CEA).

➤ Where necessary, polls could be opened:

- after hours
- Saturdays

Note: Only by exceptions and only if approved by the CEO at EC, the service voting period in respect of specific electors can be held outside the service voting period. The request is made by the Liaison Officer to the DND/CAF Coord SVR.

NOTICES OF ELECTION

- **First Notice**: When writs have been issued each CO shall publish, as part of unit orders, a notice informing electors:
 - that an election has been called;
 - of the polling date;
 - that CAF electors may vote under SVRs;
 - that he will designate DROs; and
 - that he will fix the voting times during the voting period
- (s.204 CEA)

Second Notice: Starting 3 days prior and each day during the period 05 October to 10 October 2015 inclusively, the CO must publish, in his or her unit's orders and post in a conspicuous place, a notice that states:

- the days on which the electors may vote;
- the precise location of, and the voting hours at, each polling station, other than a mobile polling station; and
- in the case of a mobile polling station, its location and the anticipated period during which it is to remain at that location.

(s.208 CEA)

CAF ELECTOR - QUALIFICATIONS AND ENTITLEMENT TO VOTE

- Canadian Citizen
- 18 years of age or over on civilian polling day
- Member of the Regular Force
- Member of the Reserve Force on full-time training or service, or on active service (Class B or C - any time from **05 Oct to 10 Oct 15** inclusively)
- Civilian elector who is employed outside Canada by the CAF as a teacher in, or as a member of the administrative support staff for a CAF school

STATEMENT OF ORDINARY RESIDENCE

- Members of Regular Force (DND 406):
 - must complete on enrolment - subsequent amendment is discretionary (Note to DRO: **In June 2014**, Elections Canada sent a letter to all CAF electors providing the opportunity to verify or amend their SOR)
- Members of Reserve Force on full-time training or service (DND 407):
 - must complete where on full-time training or service **between date of issue of writs and the Saturday preceding civilian polling day** N.B.: on full-time training or service means CAF members on Class B or C Reserve Service
- Members of Reserve Force on Active Service
 - must complete when placed on active service
 - N.B.: Reserve Force members are considered on active service anywhere beyond Canada (OIC P.C. 1989-583 of 6 Apr 89)

(ss.192, 194, 195 CEA & para.2, sect. 4 of A-AG-007-000/AF-001)

STATEMENT OF ORDINARY RESIDENCE

The SOR indicates:

- the person's surname, given names, sex and rank;
- the person's date of birth;
- the civic address of the person's place of ordinary residence in Canada immediately before enrolment, transfer or hiring; and
- the person's current mailing address.

(ss.194-195 CEA)

AMENDMENTS TO STATEMENT OF ORDINARY RESIDENCE

- Members of Regular Force may amend their SOR at any time
- The amendment comes into effect 60 days after its reception by the CO of the unit responsible for the records (URS), except when made during an election period
- If made during an election period, the amendment comes into effect 14 days after civilian polling day
- **N.B.: In 2014, Elections Canada sent a letter to all CAF electors providing the opportunity to verify or amend their SOR information.**

(CANFORGEN 178/14, DJAG AL 145 091829Z OCT 14 was also distributed to CAF electors in Oct 14, informing them of the procedure to be followed, should they wish to amend their SOR)

PLACE OF ORDINARY RESIDENCE

- A CAF elector's ordinary residence is one of the following locations:
- the place of ordinary residence of the spouse, the common-law partner, a relative or a dependant of the eligible elector, a relative of his or her spouse or common-law partner or a person with whom the elector would live but for his or her being enrolled in or hired by the CAF;
 - the place where the member is residing by reason of his or her performance of services as a member of the CAF; or
 - the elector's place of his or her ordinary residence immediately before being enrolled in or hired by the CAF.

VOTING AT A CIVILIAN POLLING STATION

Voting at a civilian polling station is authorized only if:

- a. the elector completed a SOR;
- b. the elector actually resides in the electoral district that the elector has named in his or her SOR;
- c. (1) the elector's name is included on the national Register of electors, or
(2) the elector provides satisfactory proof of identity and residence, or
(3) the elector takes the prescribed oath and is accompanied by an elector whose name appears on the list of electors for the same polling division and who vouches for him or her on oath in the prescribed form; and (s.161 CEA)
- d. the elector has not voted under the SVR at a service polling station.

METHODS TO TAKE THE SERVICE VOTE

Fixed polling station: polling station established at the unit

Joint polling stations: if two or more units are in the same locality and it would be expedient that CAF electors cast their ballots before one DRO

Mobile poll: if elector cannot conveniently reach the polling stations established at the elector's unit

Individual DRO: may be appropriate for remote locations and where few CAF members are located

MEMBERS IN HOSPITAL

If DRO designated to take the vote of members in hospital and officer in charge of hospital approves, designated DRO may go from room to room.

If DRO is not designated to take the vote of members in hospital, the DRO appointed for the unit to which the hospital belongs may take the ballot of electors.

(s.217(2) (3) CEA)

CAF ELECTOR FROM ANOTHER UNIT

(Temporary Duty or Leave)

- CAF elector on TD or leave may vote at any service polling station if the elector has proof that he is a qualified CAF elector.
- COs should ensure that leave forms or travel claims have a notation showing the electoral district of the CAF elector.
- Each LO will be provided with an alphabetical list of all CAF electors and will be able to confirm, on request from a DRO, the name of the member's electoral district.

CAF ELECTOR FROM ANOTHER UNIT

(Temporary Duty or Leave)

The name of an elector from another unit will not be recorded on your unit list of CAF electors. To ascertain the electoral district:

1. Check member's documentation (i.e. annotated travel claims or leave form):

- a) check Guide to Federal Electoral Districts and Street Indexes
- b) if in doubt, call your LO to obtain the member's electoral district from the CAF Alphabetical List (Reg Force)

2. Where a CAF elector has no documentation or does not know his/her address and/or city as recorded on SOR:

- a) call your LO to obtain the member's electoral district from the Alpha list; or
- b) call the member's unit to check unit record for SOR and the member's electoral district

INCARCERATED ELECTOR

An incarcerated CAF elector is entitled to vote:

At a service polling station if elector is in a detention barrack or service prison; or

(this includes accused in pre-trial custody)

Before a DRO, if elector is in a civil correctional institution. Check with incarcerated CAF elector to determine if he or she wants to vote.

(s.245, CEA)

LIST OF CANDIDATES FOR THE 338 ELECTORAL DISTRICTS

This list of candidates for each of the 338 electoral districts will be issued by CANELECTGEN message on or about **2 Oct 15**.

N.B. The list of candidates for the 2015 election will also be posted on the JAG Website.

How to determine your CAF elector's electoral district:

You can consult the Elections Canada Website, and on the front page enter the appropriate member's postal code for the address of the member's SOR, which should relate to your assigned electoral district; or

Use *Street Indexes* or *Guide to Federal Electoral Districts*

PREPARATION FOR VOTING

- 1 - Have the list of CAF electors prepared by the unit, provided by CO (not ADM(HR Mil)/DHRIM list)
- 2 - Obtain adequate voting material and other required supplies from LOs/SVRA, including sufficient quantities of postage stamps. You can use the “**Unit Requirement of Election Material**” form to order supplies.
- 3 - Check the voting material, count ballot papers and return, via FAX the white copy of the supply distribution record (EC 78190 or Ref 78190) to SVRA in Ottawa
- 4 - Keep ballots in secure place
- 5 - Properly set up polling station to enable electors to vote in secret and **ensure that EC large posters are affixed at the right locations (so that electors know where to vote)**
- 6 - Know the dates and time of your polling station - notice of election issued by CO - ensure notice has been posted and published in routine orders
- 7 - Receive list of candidates and political parties - draw a heavy line above and below the list of candidates for each electoral district
- 8 - Instructions Cards (at least two) (EC 78120) to be posted conspicuously in the polling station

UNIT REQUIREMENT OF ELECTION MATERIAL
REQUISITION DU MATÉRIEL D'ÉLECTION POUR LES UNITÉS

FROM/DE: LO/AL _____

TO/À: Elections Canada - Military Vote Coordinator / Élections Canada - Coordonnateur du vote militaire

The units listed hereunder will require material for the number of electors and Deputy Returning Officers as indicated/les unités figurant plus bas ont besoin de matériel pour le nombre d'électeurs et de scrutateurs tel qu'indiqué:

UNIT(S) AND SHIPPING ADDRESS/UNITÉ ET ADRESSE D'ENVOI:

NAME OF CONTACT PERSON (Sr DRO/DRO), E-mail and TELEPHONE NUMBER/ NOM DE LA PERSONNE RESSOURCE (SCRUTATEUR SUPÉRIEUR/ SCRUTATEUR, Courriel et NUMÉRO DE TÉLÉPHONE :

NUMBER OF ELECTORS/NOMBRE D'ÉLECTEURS :

NUMBER OF RESERVISTS ON CLASS C/B / NOMBRE DE RÉSERVISTES EN CLASSE C/B :

NUMBER OF DROs/NOMBRE DE SCRUTATEURS

NUMBER OF POLLING STATIONS/NOMBRE DE BUREAUX DE SCRUTIN :

NOTE: Shipping address must be an actual building, street number where materials can be delivered by courier. *Postal boxes, CFPOs, FMOs are not acceptable*
L'adresse d'envoi doit être actuellement un édifice, numéro de rue etc où le matériel peut être livré par messagerie. *Les boîtes postales des Forces canadiennes et américaines sont inacceptables.*

Return by: Priority Post to: Military Vote Coordinator, 440 Coventry Rd, PO Box 9742, Stn T Ottawa ON K1G 5N5; or
by courier to MVC 440 Coventry Rd Ottawa, ON; or
by Fax to 613-991-4366 or 1-800-770-2062; or
by Email attachment to: Dona.Hill@elections.ca
Retournez par : Postes Prioritaires Coordonnateur du vote militaire, 440 Chemin Coventry, CP 9742, succ. T, Ottawa ON K1G 5N5; ou
par Courrier a Coordonnateur du Vote Militaire 440 chemin Coventry, Ottawa ON; ou
par télécopieur au : 613-991-4366 or 1-888-770-2062; ou
par courriel a : Dona.Hill@elections.ca

(2015/08)

Unit requirement of Election Material Form

PREPARATION FOR VOTING (Cont'd)

9 - Ensure that each CAF elector will have access to:

- Special Voting Rules (SVR) - Part 11 of the Canada Elections Act
- Guide to Federal Electoral Districts (EC06508)
- Street indexes
- List of the names of candidates
- Instructions Cards (EC78120) (s.210(1)(b) CEA)

10 - Ensure there is a pen or sharpened pencil available to mark the ballot

11 – Obtain postage stamps in sufficient quantity: (for CAF electors who wish to mail their ballot themselves)

12 - Prepare and check the polling station before opening time

13 - If a representative of a political party is present, ensure that you receive a properly signed appointment form (EC78070). Make a copy of the form and annotate time period representative remains on premises. Retain the original form while representative is at the polling station and return original to representative upon his/her departure from premises

AUTHORIZATION OF A POLITICAL PARTY REPRESENTATIVE

AUTORISATION D'UN REPRÉSENTANT D'UN PARTI POLITIQUE

TYPE OR PRINT IN BLOCK LETTERS / DACTYLOGRAPHIER OU ÉCRIRE EN LETTRES MOULÉES

NAME / NOM	POLITICAL PARTY / PARTI POLITIQUE
POLLING STATION / BUREAU DU SCRUTIN	

I hereby authorize the above-named person to act as a representative of my political party at this polling station set up for voting by Canadian Forces electors for the current federal election.

J'autorise par la présente la personne mentionnée plus haut à agir comme représentant(e) de mon parti politique à ce bureau de scrutin établi pour la tenue du vote des électeurs des Forces canadiennes, à l'élection fédérale en cours.

CANDIDATE'S SIGNATURE / SIGNATURE DU CANDIDAT

DATE

THIS AUTHORIZATION MUST BE DELIVERED TO AND
RETAINED BY THE DEPUTY RETURNING OFFICER

CETTE AUTORISATION DOIT ÊTRE REMISE AU
SCRUTATEUR QUI DOIT LA CONSERVER

OATH OF REPRESENTATIVE

I, the undersigned, authorized to be in attendance at this polling station, swear or solemnly affirm that:

- I will maintain and aid in maintaining the secrecy of the vote;
- I will not interfere with the marking of a ballot paper by an elector or obtain or communicate any information as to how an elector is about to vote or has voted;
- I will not directly or indirectly induce an elector to show a marked ballot paper to any person.

SWORN OR AFFIRMED BEFORE ME
SERMENT PRÊTÉ OU AFFIRMATION FAITE DEVANT MOI

AT A		
This Ce	day of jour de	year année

DEPUTY RETURNING OFFICER / SCRUTATEUR

SIGNATURE OF PERSON TAKING OATH / SIGNATURE DU DÉCLARANT

FOR DEPUTY RETURNING OFFICER:

AU SCRUTATEUR :

ON COMPLETION OF ALL DUTIES, RETURN THIS DOCUMENT
TO THE COMMANDING OFFICER

APRÈS AVOIR REMPLI TOUTES VOS FONCTIONS,
RETROUVEZ CE FORMULAIRE AU COMMANDANT

Authorisation of a political party representative

(EC 78070)

PROHIBITIONS – EMBLEMS, FLAGS, CAMPAIGN LITERATURE

No person shall:

- post or display any campaign literature or other material in a polling place or in the exterior surface of a polling place
- while in a polling station, wear any emblem, flag, banner or other object that supports or opposes any candidate or registered party
- influence electors to vote or refrain from voting in a polling station

(s.166 CEA)

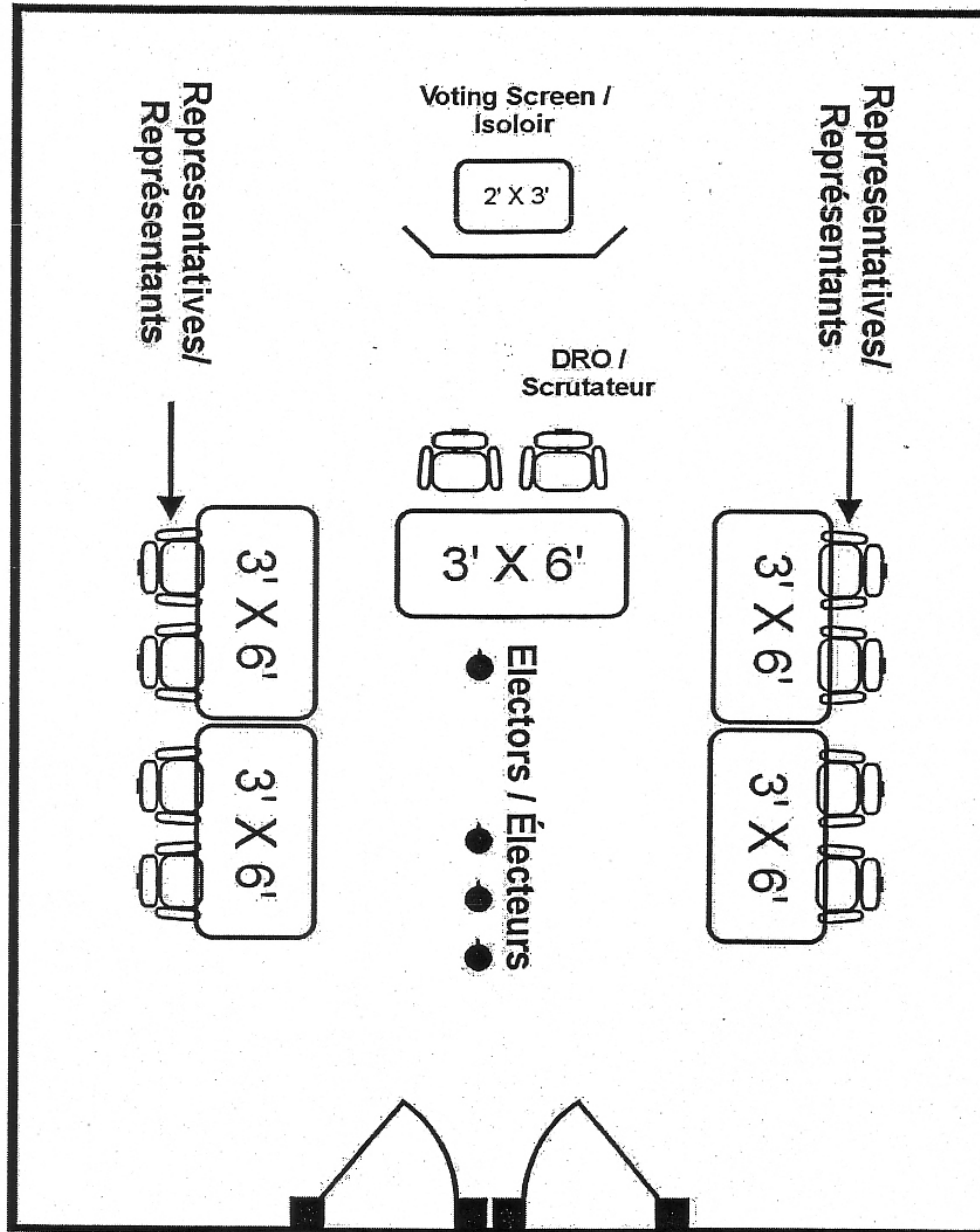
SERVICE POLLING STATION SET UP

How to physically arrange the polling station:

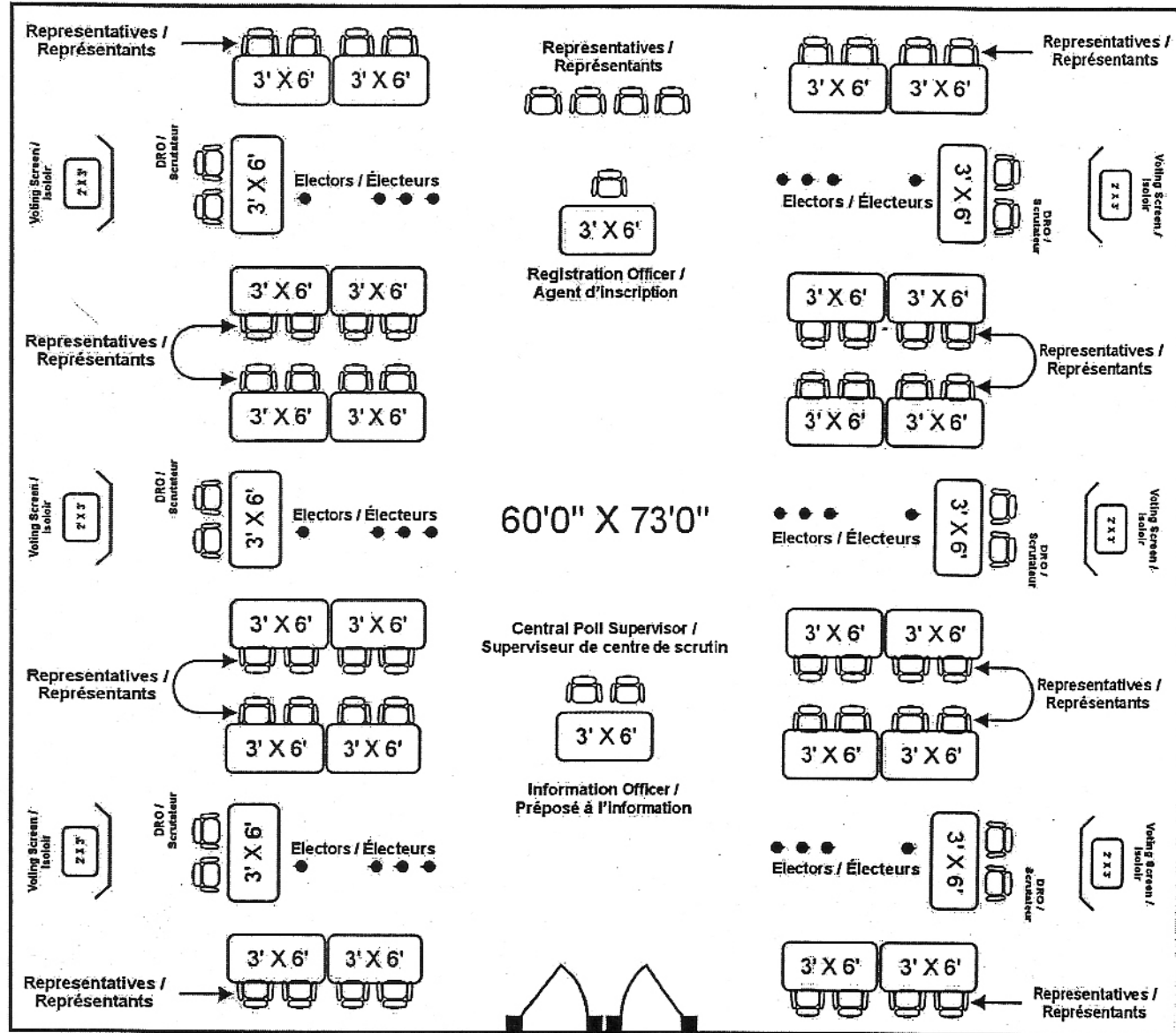
- DRO's table (DRO and assistant)
- representatives of political parties - different table but on either side of DRO's table so that they have a clear view of the proceedings
- polling booth (corner - away from the two tables)
- Instructions Cards (EC78120) to be posted in both official languages (at least two copies) – best location is at the polling booth(s)
- Dividers (Elections Canada should send dividers with voting material)
- decorum (quiet location)



**SETTING UP A POLLING STATION /
MISE EN PLACE D'UN BUREAU DE SCRUTIN**



SETTING UP A CENTRAL POLLING PLACE / MISE EN PLACE D'UN CENTRE DE SCRUTIN



DOCUMENTATION USED TO TAKE THE VOTE

- outer envelope, including at the back of the envelope the declaration signed by the elector
- inner envelope
- ballot paper
- list of names of candidates
- statement of ordinary residence, if required to be completed before voting (Res F members)

Federal Electoral Districts Representation Order of 2013 / Circonscriptions fédérales, Décret de représentation de 2013

ONTARIO

35001 Ajax	35037 Hamilton Mountain	35070 Nipissing—Timiskaming	35105 Thunder Bay—Rainy River	59019 New Westminster—Burnaby
35002 Algoma—Manitoulin—Kapusking	35038 Hamilton West—Ancaster—Dundas / Hamilton-Ouest—Ancaster—Dundas	35071 Northumberland—Peterborough South / Northumberland—Peterborough-Sud	35106 Thunder Bay—Superior North / Thunder Bay—Supérieur-Nord	59020 North Okanagan—Shuswap
35003 Aurora—Oak Ridges—Richmond Hill	35039 Hastings—Lennox and Addington	35072 Oakville	35107 Timmins—James Bay / Timmins—Baie James	59021 North Vancouver
35004 Barrie—Innisfil	35040 Huron—Bruce	35073 Oakville North—Burlington / Oakville-Nord—Burlington	35108 Toronto Centre / Toronto-Centre	59022 Pitt Meadows—Maple Ridge
35005 Barrie—Springwater—Oro-Medonte	35041 Kanata—Carleton	35074 Oshawa	35109 Toronto—Danforth	59023 Port Moody—Coquitlam
35006 Bay of Quinte / Baie de Quinte	35042 Kenora	35075 Ottawa Centre / Ottawa-Centre	35110 University—Rosedale	59024 Prince George—Peace River—Northern Rockies
35007 Beaches—East York	35043 King—Vaughan	35076 Orléans	35111 Vaughan—Woodbridge	59025 Richmond Centre / Richmond-Centre
35008 Brampton Centre / Brampton-Centre	35044 Kingston and the Islands / Kingston et les Îles	35077 Ottawa South / Ottawa-Sud	35112 Waterloo	59026 Esquimalt—Saanich—Sooke
35009 Brampton East / Brampton-Est	35045 Kitchener Centre / Kitchener-Centre	35078 Ottawa—Vanier	35113 Wellington—Halton Hills	59027 Saanich—Gulf Islands
35010 Brampton North / Brampton-Nord	35046 Kitchener—Conestoga	35079 Ottawa West—Nepean / Ottawa-Ouest—Nepean	35114 Whitby	59028 Skeena—Bulkley Valley
35011 Brampton South / Brampton-Sud	35047 Kitchener South—Hespeler / Kitchener-Sud—Hespeler	35080 Oxford	35115 Willowdale	59029 South Okanagan—West Kootenay / Okanagan-Sud—Kootenay-Ouest
35012 Brampton West / Brampton-Ouest	35048 Lambton—Kent—Middlesex	35081 Parkdale—High Park	35116 Windsor—Tecumseh	59030 South Surrey—White Rock / Surrey-Sud—White Rock
35013 Brantford—Brant	35049 Lanark—Frontenac—Kingston	35082 Parry Sound—Muskoka	35117 Windsor West / Windsor-Ouest	59031 Steveston—Richmond East / Steveston—Richmond-Est
35014 Bruce—Grey—Owen Sound	35050 Leeds—Grenville—Thousand Islands and Rideau Lakes / Leeds—Grenville—Thousand Islands et Rideau Lakes	35083 Perth—Wellington	35118 York Centre / York-Centre	59032 Surrey Centre / Surrey-Centre
35015 Burlington	35051 London—Fanshawe	35084 Peterborough—Kawartha	35119 York—Simcoe	59033 Surrey—Newton
35016 Cambridge	35052 London North Centre / London-Centre-Nord	35085 Pickering—Uxbridge	35120 York South—Weston / York-Sud—Weston	59034 Vancouver Centre / Vancouver-Centre
35017 Chatham-Kent—Leamington	35053 London West / London-Ouest	35086 Renfrew—Nipissing—Pembroke	35121 Humber River—Black Creek	59035 Vancouver East / Vancouver-Est
35018 Davenport	35054 Markham—Stouffville	35087 Richmond Hill		59036 Vancouver Granville
35019 Don Valley East / Don Valley-Est	35055 Markham—Thornhill	35088 Carleton		59037 North Island—Powell River
35020 Don Valley North / Don Valley-Nord	35056 Markham—Unionville	35089 St. Catharines		59038 Vancouver Kingsway
35021 Don Valley West / Don Valley-Ouest	35057 Milton	35090 Toronto—St. Paul's		59039 Vancouver Quadra
35022 Dufferin—Caledon	35058 Mississauga Centre / Mississauga-Centre	35091 Sarnia—Lambton		59040 Vancouver South / Vancouver-Sud
35023 Durham	35059 Mississauga East—Cooksville / Mississauga-Est—Cooksville	35092 Sault Ste. Marie		59041 Victoria
35024 Eglinton—Lawrence	35060 Mississauga—Erin Mills	35093 Scarborough—Agincourt		59042 West Vancouver—Sunshine Coast—Sea to Sky Country
35025 Elgin—Middlesex—London	35061 Mississauga—Lakeshore	35094 Scarborough Centre / Scarborough-Centre		
35026 Essex	35062 Mississauga—Malton	35095 Scarborough—Guildwood		
35027 Etobicoke Centre / Etobicoke-Centre	35063 Mississauga—Streetsville	35096 Scarborough North / Scarborough-Nord		
35028 Etobicoke—Lakeshore	35064 Nepean	35097 Scarborough—Rouge Park		
35029 Etobicoke North / Etobicoke-Nord	35065 Newmarket—Aurora	35098 Scarborough Southwest / Scarborough-Sud-Ouest		
35030 Flamborough—Glanbrook	35066 Niagara Centre / Niagara-Centre	35099 Simcoe—Grey		
35031 Glengarry—Prescott—Russell	35067 Niagara Falls	35100 Simcoe North / Simcoe-Nord		
35032 Guelph	35068 Niagara West / Niagara-Ouest	35101 Spadina—Fort York		
35033 Haldimand—Norfolk	35069 Nickel Belt	35102 Stormont—Dundas—South Glengarry		
35034 Haliburton—Kawartha Lakes—Brock		35103 Sudbury		
35035 Hamilton Centre / Hamilton-Centre		35104 Thornhill		
35036 Hamilton East—Stoney Creek / Hamilton-Est—Stoney Creek				

BRITISH COLUMBIA / COLOMBIE-BRITANNIQUE

59001 Abbotsford	59035 Vancouver East / Vancouver-Est
59002 Burnaby North—Seymour / Burnaby-Nord—Seymour	59036 Vancouver Granville
59003 Burnaby South / Burnaby-Sud	59037 North Island—Powell River
59004 Cariboo—Prince George	59038 Vancouver Kingsway
59005 Central Okanagan—Similkameen—Nicola	59039 Vancouver Quadra
59006 Chilliwack—Hope	59040 Vancouver South / Vancouver-Sud
59007 Cloverdale—Langley City	59041 Victoria
59008 Coquitlam—Port Coquitlam	59042 West Vancouver—Sunshine Coast—Sea to Sky Country
59009 Courtenay—Alberni	
59010 Cowichan—Malahat—Langford	
59011 Delta	
59012 Fleetwood—Port Kells	
59013 Kamloops—Thompson—Cariboo	
59014 Kelowna—Lake Country	
59015 Kootenay—Columbia	
59016 Langley—Aldergrove	
59017 Mission—Matsqui—Fraser Canyon	
59018 Nanaimo—Lions Bay	

YUKON

60001 Yukon

NORTHWEST TERRITORIES / TERRITOIRES DU NORD-OUEST

61001 Northwest Territories / Territoires du Nord-Ouest

NUNAVUT

62001 Nunavut

Federal Electoral Districts Representation Order of 2013 / Circonscriptions fédérales, Décret de représentation de 2013

NEWFOUNDLAND AND LABRADOR / TERRE-NEUVE-ET-LABRADOR

- 10001 Avalon
- 10002 Bonavista—Burin—Trinity
- 10003 Coast of Bays—Central—
Notre Dame
- 10004 Labrador
- 10005 Long Range Mountains
- 10006 St. John's East / St. John's-Est
- 10007 St. John's South—Mount Pearl /
St. John's-Sud—Mount Pearl

PRINCE EDWARD ISLAND / ÎLE-DU-PRINCE-ÉDOUARD

- 11001 Cardigan
- 11002 Charlottetown
- 11003 Egmont
- 11004 Malpeque

NOVA SCOTIA / NOUVELLE-ÉCOSSE

- 12001 Cape Breton—Canso
- 12002 Central Nova / Nova-Centre
- 12003 Cumberland—Colchester
- 12004 Dartmouth—Cole Harbour
- 12005 Halifax
- 12006 Halifax West / Halifax-Ouest
- 12007 Kings—Hants
- 12008 Sackville—Preston—Chezzetcook
- 12009 South Shore—St. Margarets
- 12010 Sydney—Victoria
- 12011 West Nova / Nova-Ouest

NEW BRUNSWICK / NOUVEAU-BRUNSWICK

- 13001 Acadie—Bathurst
- 13002 Beauséjour
- 13003 Fredericton
- 13004 Fundy Royal
- 13005 Madawaska—Restigouche
- 13006 Miramichi—Grand Lake
- 13007 Moncton—Riverview—Dieppe

- 13008 New Brunswick Southwest /
Nouveau-Brunswick-Sud-Ouest
- 13009 Saint John—Rothesay
- 13010 Tobique—Mactaquac

QUEBEC / QUÉBEC

- 24001 Abitibi—Baie-James—Nunavik—
Eeyou
- 24002 Abitibi—Témiscamingue
- 24003 Ahuntsic—Cartierville
- 24004 Alfred—Pellan
- 24005 Argenteuil—La Petite-Nation
- 24006 Avignon—La Mitis—Matane—
Matapédia
- 24007 Beauce
- 24008 Beauport—Limouilou
- 24009 Bécancour—Nicolet—Saurel
- 24010 Bellechasse—Les Etchemins—Lévis
- 24011 Beloeil—Chambly
- 24012 Berthier—Maskinongé
- 24013 Thérèse-De Blainville
- 24014 Pierre-Boucher—Les Patriotes—
Verchères
- 24015 Bourassa
- 24016 Brome—Missisquoi
- 24017 Brossard—Saint-Lambert
- 24018 Rimouski-Neigette—Témiscouata—
Les Basques
- 24019 Charlesbourg—Haute-Saint-Charles
- 24020 Beauport—Côte-de-Beaupré—
Île d'Orléans—Charlevoix
- 24021 Châteauguay—Lacolle
- 24022 Chicoutimi—Le Fjord
- 24023 Compton—Stanstead
- 24024 Dorval—Lachine—LaSalle
- 24025 Drummond
- 24026 Gaspésie—Les Îles-de-la-Madeleine
- 24027 Gatineau
- 24028 Hochelaga
- 24029 Honoré-Mercier
- 24030 Hull—Aylmer
- 24031 Joliette
- 24032 Jonquière

- 24033 La Pointe-de-l'Île
- 24034 La Prairie
- 24035 Lac-Saint-Jean
- 24036 Lac-Saint-Louis
- 24037 LaSalle—Émard—Verdun
- 24038 Laurentides—Labelle
- 24039 Laurier—Sainte-Marie
- 24040 Laval—Les Îles
- 24041 Longueuil—Charles-LeMoine
- 24042 Lévis—Lotbinière
- 24043 Longueuil—Saint-Hubert
- 24044 Louis-Hébert
- 24045 Louis-Saint-Laurent
- 24046 Manicouagan
- 24047 Mégantic—L'Érable
- 24048 Mirabel
- 24049 Montarville
- 24050 Montcalm
- 24051 Montmagny—L'Islet—
Kamouraska—Rivière-du-Loup
- 24052 Mont-Royal / Mount Royal
- 24053 Notre-Dame-de-Grâce—Westmount
- 24054 Outremont
- 24055 Papineau
- 24056 Pierrefonds—Dollard
- 24057 Pontiac
- 24058 Portneuf—Jacques-Cartier
- 24059 Québec
- 24060 Repentigny
- 24061 Richmond—Arthabaska
- 24062 Rivière-des-Mille-Îles
- 24063 Rivière-du-Nord
- 24064 Rosemont—La Petite-Patrie
- 24065 Marc-Aurèle-Fortin
- 24066 Saint-Hyacinthe—Bagot
- 24067 Saint-Jean
- 24068 Saint-Laurent
- 24069 Saint-Léonard—Saint-Michel
- 24070 Saint-Maurice—Champlain
- 24071 Salaberry—Suroît
- 24072 Shefford
- 24073 Sherbrooke
- 24074 Vaudreuil—Soulanges
- 24075 Terrebonne

- 24076 Trois-Rivières
- 24077 Ville-Marie—Le Sud-Ouest—
Île-des-Soeurs
- 24078 Vimy

MANITOBA

- 46001 Brandon—Souris
- 46002 Charleswood—St. James—
Assiniboia—Headingley
- 46003 Churchill—Keewatinook Aski
- 46004 Dauphin—Swan River—Neebawa
- 46005 Elmwood—Transcona
- 46006 Kildonan—St. Paul
- 46007 Portage—Lisgar
- 46008 Provencher
- 46009 Saint Boniface—Saint Vital /
Saint-Boniface—Saint-Vital
- 46010 Selkirk—Interlake—Eastman
- 46011 Winnipeg Centre / Winnipeg-Centre
- 46012 Winnipeg North / Winnipeg-Nord
- 46013 Winnipeg South / Winnipeg-Sud
- 46014 Winnipeg South Centre /
Winnipeg-Centre-Sud

SASKATCHEWAN

- 47001 Battlefords—Lloydminster
- 47002 Cypress Hills—Grasslands
- 47003 Desnethé—Missinippi—
Churchill River /
Desnethé—Missinippi—
Rivière Churchill
- 47004 Carlton Trail—Eagle Creek /
Sentier Carlton—Eagle Creek
- 47005 Moose Jaw—Lake Centre—Lanigan
- 47006 Prince Albert
- 47007 Regina—Lewvan
- 47008 Regina—Qu'Appelle
- 47009 Regina—Wascana
- 47010 Saskatoon—Grasswood
- 47011 Saskatoon—University
- 47012 Saskatoon West / Saskatoon-Ouest
- 47013 Souris—Moose Mountain
- 47014 Yorkton—Melville

ALBERTA

- 48001 Banff—Airdrie
- 48002 Battle River—Crowfoot
- 48003 Bow River
- 48004 Calgary Centre / Calgary-Centre
- 48005 Calgary Confederation
- 48006 Calgary Forest Lawn
- 48007 Calgary Heritage
- 48008 Calgary Midnapore
- 48009 Calgary Nose Hill
- 48010 Calgary Rocky Ridge
- 48011 Calgary Shepard
- 48012 Calgary Signal Hill
- 48013 Calgary Skyview
- 48014 Edmonton Centre / Edmonton-Centre
- 48015 Edmonton Griesbach
- 48016 Edmonton Manning
- 48017 Edmonton Mill Woods
- 48018 Edmonton Riverbend
- 48019 Edmonton Strathcona
- 48020 Edmonton West / Edmonton-Ouest
- 48021 Edmonton—Wetaskiwin
- 48022 Foothills
- 48023 Fort McMurray—Cold Lake
- 48024 Grande Prairie—Mackenzie
- 48025 Lakeland
- 48026 Lethbridge
- 48027 Medicine Hat—Cardston—Warner
- 48028 Peace River—Westlock
- 48029 Red Deer—Mountain View
- 48030 Red Deer—Lacombe
- 48031 St. Albert—Edmonton
- 48032 Sherwood Park—Fort Saskatchewan
- 48033 Sturgeon River—Parkland
- 48034 Yellowhead

PROHIBITIONS

No person shall:

- knowingly make a false statement in a declaration signed by him or her before a DRO;
- knowingly make a false declaration in the SOR completed by him or her;

No person, who has voted at an election, may request a second ballot at that election (unless the first ballot has been spoiled)

(s.281 CEA)

PROHIBITIONS – CONCERNING BALLOT PAPERS

No person shall:

- provide a ballot to a person unless authorized by law to do so
- have a ballot in his/her possession unless authorized by law to do so

No DRO shall write or mark on any ballot to be given to an elector (with the intent that the elector may be identified)

(s.167(1) & (3) CEA)

PROCEDURES FOR CASTING VOTE



INSTRUCTION CARD

EC 78120
(01/02)

FOR CANADIAN FORCES ELECTORS AT A FEDERAL ELECTION OR REFERENDUM

1. You may vote at a federal election or referendum only once.
2. First, the deputy returning officer will hand you an outer envelope. Complete the information requested on this envelope and sign your name under the declaration.
3. After you have signed your name on the outer envelope, the deputy returning officer will hand you a ballot paper and an inner envelope. At an election, the deputy returning officer will also hand you the list of confirmed candidates, opened to the page corresponding to your home riding. Go to the designated private area to mark your ballot.
4. At an election, write with a pen or pencil the given name(s) or initial(s) and surname of the candidate of your choice in the space provided for that purpose on the ballot paper. If there are two or more candidates with the same name, you will also write in the candidate's political affiliation. Fold your ballot paper and go back to the deputy returning officer.

At a referendum, make an "X" in the space corresponding to the word "yes" or "no" in answer to the referendum question on the ballot. You must then fold the ballot paper and return it to the deputy returning officer, who will remove the numbered counterfoil and return the ballot to you.
5. In the presence of the deputy returning officer:
 - a) insert the folded ballot paper in the inner envelope and seal it; and
 - b) insert the inner envelope in the outer envelope and seal it.
6. Transmit the completed ballot, sealed in the inner and outer envelopes, to Elections Canada by mail or by other such means as directed by the deputy returning officer. By law, to be counted, the completed ballot must be received by Elections Canada in Ottawa no later than 6:00 p.m., Ottawa time, on civilian polling day.
7. Should you inadvertently spoil a ballot paper, you must return it to the deputy returning officer, who will hand you another ballot paper. This can only be done once.
8. Your vote will not be counted if:
 - Your ballot paper is marked for more than one candidate or referendum option
 - At an election, you have only voted for a political party and not a candidate
 - Your ballot paper contains a mark by which you can afterwards be identified.

PROCEDURES FOR CASTING VOTE

- DRO requests that elector completes and signs outer envelope indicating correct electoral district in which elector will vote
- If no SOR, elector may complete one of the following :
 - EC78000/DND 406 - Regular Force/Civilian Teachers/Staff
 - EC78020/DND 407 - Reserve Force
- NOTE: Every Regular Force member must have an SOR form already completed.
- Ballot paper, inner and outer envelopes, and list of candidates to elector
- Write given names or initials and surname of candidate
- Elector seals all envelopes in presence of DRO
- Must be received by SVRA / Military Vote Coordinator no later than 18h00 on civilian polling day **(19 Oct 2015)**
- Postage paid
- Only one spoiled ballot allowed

PROCEDURES FOR CASTING VOTE

CASE: WHEN CAF ELECTOR'S NAME ONLY IS REFLECTED ON THE LIST

DRO asks elector if he/she has completed an SOR -

- (a) if no, then must complete one before voting. Determine the electoral district of the elector by using the Guide to Federal Electoral Districts and the Street Indexes
- (b) if elector states that he/she has completed an SOR:
 - Ask someone in the elector unit's orderly room to find out the elector's current SOR and confirm the address/ electoral district reflected of the statement

PROCEDURES FOR CASTING VOTE

- 1 - Elector presents himself/herself at the polling station and gives his/her service number, rank, name and initials to DRO. DRO checks the elector's identification card (ID).
- 2 - DRO checks if elector is on the list of CAF electors.
 - (a) When elector's name is not on the list, follow procedure at p.11 of DRO Manual.
 - (b) When the elector's address and electoral district are not on the list, follow procedure at p. 11 of DRO Manual
- 3 - When the elector's name is on the list, DRO writes the assigned electoral district on the back of the outer envelope.
 - when elector's name is not on the list, record, at the end of the unit list, the service number, rank, surname, initials, unit, and the electoral district of the elector.

PROCEDURES FOR CASTING VOTE

- 4 - DRO records the elector's electoral district and the appropriate code for the electoral district. Asks elector to read the back of the outer envelope, to complete (name - John Smith - unit must be identified with location where deployed e.g. 1 PPCLI/TFA Battle Group, Afghanistan) sign and date the outer envelope before him/her. (The date confirms that elector voted within the service voting period).
- 5 - DRO ensures that electoral district recorded on list of CAF electors and outer envelope matches and that elector's name is struck from the list.
- 6 - DRO ensures that elector's signature and date appear on the outer envelope (IMPORTANT NOTE: **If signature is missing, or if the electoral district cannot be ascertained or that the correct electoral district of the elector cannot be ascertained, the ballot will not be counted** (s.267(1)(b) (c))
- 7 - DRO hands the elector a ballot paper, an inner envelope, the outer envelope bearing the signature of the elector and the list of confirmed candidates

PROCEDURES FOR CASTING VOTE

- 8 - The list of candidates must be turned to the pages corresponding to the elector's electoral district.
- 9 - The DRO informs the elector that he/she must write on the ballot, the given name(s) or initials and surname of the candidate of his/her choice
 - if two or more candidates have the same name, the elector must also write the political party or the word “independent”, as the case may be.
- 10 - The DRO informs the elector that if the elector votes for a political party only, the vote will be rejected.
- 11 - The elector then goes to a separate table (with Elections Canada Voting Screen - cardboard) to mark and fold the ballot paper

PROCEDURES FOR CASTING VOTE

12 - If an elector has inadvertently spoiled the ballot:

- DRO marks the returned ballot paper as spoiled, without unfolding it, and places it in the Spoiled Ballot Papers Envelope (EC 78270)
- DRO hands another ballot paper to the elector

N.B.: Only one other ballot may be given to the elector after a ballot paper has been spoiled (s.213(5) CEA)

13 - The elector returns to the DRO's table and, in plain view of the DRO, the elector must:

- insert the folded ballot paper into the inner envelope
- seal the inner envelope
- insert the inner envelope into the outer envelope
- seal and hand you the outer envelope

PROCEDURES FOR CASTING VOTE

- 14 – DRO informs the elector where to deposit the envelope which you will send to the SVRA in Ottawa, following arrangements made by your unit's CO.
- 15 – DRO informs the elector that he/she may mail the envelope personally. DRO must provide postage and advise the elector:
 - (a) that in order to be counted, the outer envelope must be received by the SVRA in Ottawa no later than 1800 hours on civilian polling day (19 October 2015)
 - (b) of the nearest post office or mail box.
- 16 - (a) DRO arranges to return outer envelopes by **priority post**, courier or other means as often as practicable and not in bulk at the end of the service voting period
 - (b) Confirm the number of completed outer envelopes to your LO by fax
 - (c) Complete a DND 728 Form to confirm what you are sending to SVRA

OUTER ENVELOPE



Outer Envelope - Canadian Forces Elector
Enveloppe extérieure - Électeur des Forces canadiennes

EC 78200
(03/2014)

Name of elector / Nom de l'électeur
Electoral district / Circonscription

This box is for office use only
Cette case est réservée à l'usage du bureau

I, the undersigned, declare that my name is as stated above.
Je, soussigné(e), déclare que mon nom est tel qu'indiqué plus haut.

X

Elector's signature / Signature de l'électeur

Date

Your ballot will not be counted
if this envelope is not signed.

☐

DID YOU SIGN AND DATE THIS ENVELOPE?
AVEZ-VOUS SIGNÉ À L'ENDOS?

Votre bulletin ne comptera pas si
cette enveloppe n'est pas signée.

To be signed only when an elector has received help in voting. / À signer seulement si l'électeur a obtenu de l'aide pour voter.

Signature of deputy returning officer
Signature du scrutateur

Signature of an elector acting as a witness
Signature d'un autre électeur témoin

CALENDAR - CRUCIAL DATES FOR LIAISON OFFICERS/DEPUTY RETURNING OFFICERS

		<u>REF</u>
Issuance of Writs	2 August 2015	
Lists of CF electors and names of DROs prepared by COs to be forwarded by LOs to SVRA	7 Aug 2015	S. 5, para. 8(a) and (b) of A-LG-007-000/AF-001 (Federal, Provincial and Territorial Electoral Events)
First Notice: General notice – writs	At the earliest opportunity	S. 204 of the <i>CEA</i>
Second Notice: Notice to be issued by COs establishing service voting period, which will set locations, dates and times	At the earliest opportunity	S. 208 of the <i>CEA</i> & S. 5, para 7 of A-LG-007-000/AF-001 (to be posted and published in routine orders)
Briefing to DROs	On-line Training	See JAG Internet/Intranet
Voting material to be with DROs (1 week before voting period) SVRA in Ottawa will send	TBD by SVRA (See Elections Canada Calendar)	
List of candidates to be issued by DND/CF Coord Offr through CANELECTGEN	Around 2 nd Oct 2015	

CALENDAR - CRUCIAL DATES FOR LIAISON OFFICERS/DEPUTY RETURNING OFFICERS

		<u>REF</u>
<u>Service</u> Voting Period (DAY 14 to 9)	5 Oct to 10 Oct 15 inclusive	s. 190, 205(3) and 208 of the CEA Minimum: 3 days 3hrs/day
DRO after action report to LO	16 Oct 15	
<u>Completed</u> ballots received by SVRA in Ottawa by 1800 hrs	19 Oct 15	s. 214 of the CEA
<u>Civilian</u> Polling day	19 Oct 15	
All other unused material, including ballot stubs and spoiled ballots to SVRA in Ottawa	29 Oct 15	
Consolidated Sr LO After election Report to JAG Coord Offr SVR	No later than 18 Dec 15	
Detailed expenses from DROs and LOs to voting area HQ	19 Nov 15	Required for all DROs/LOs
Detailed expenses report to JAG (no later than 5 weeks after polling day)	23 Nov 15	From TBD to JAG/Coord Offr

FINANCIAL ADMINISTRATION

Cost Recovery Policy

DCSFA Financial Instruction

Reporting Requirements

DROs and LOs must ensure cost recovery reports are submitted to the Fin Clerk (**RANK & NAME**), HQ Voting Area Central, Ottawa, through the LO of your voting area, no later than 19 Nov 15.

Points of Contact at DCSFA:

(First POC): DCSFA 3: Tanya Baillie (613) 943-0572

(Second POC): DCSFA 3-3: Sheila Bennett (613) 992-5741

Fax for all POCs: (613) 996-2931

POTENTIAL QUESTIONS

If you have any questions about the Special Voting Rules (SVR) and procedures, or if you encounter difficulties, please contact your LO.

WEBSITES

Office of the Judge Advocate General (JAG):

Intranet: jag.mil.ca

Internet: www.forces.gc.ca/jag

-- Click on “**Estates and Elections**” menu button

Elections Canada:

Internet: www.elections.ca

CONTACT NAMES/NUMBERS

HQ OTTAWA - CENTRAL VOTING AREA/SVRA ELECTIONS CANADA

and DND Coord SVR

(SVRA) Mr. Paul Legault
Special Voting Rules Administrator

Phone: (613) 949-0101
Cell: (613) 219-1652
E-mail: Paul.Legault@elections.ca

Fax: (613) 991-4366
Toll free 1-800-770-2062

Military Vote Coordinator

Mr. Josh Barber

Phone: (613) 949-0831
Cell: (613) 415-0805
E-mail: Josh.Barber@elections.ca

Fax: (613) 991-4366 or
Toll free 1-888-770-2062

DND Coord Offr

Col Vihar Joshi

Phone: (613) 995-2628
Cell: (613) 608-3607
E-mail: Vihar.Joshi@forces.gc.ca

Fax: (613) 995-3155

DND Deputy Coord Offr

LCol Roger Strum

Phone: (902) 427-7300
E-mail: Roger.Strum@forces.gc.ca

Fax: (902) 427-7199

Elections Administration Officer

Suzanne Touchette

Phone: (613) 992-0073
E-mail: Suzanne.Touchette@forces.gc.ca

Fax: (613) 995-3155

Assistant to the Elections Administration Officer

Jeannine Lépine

Phone: (613) 992-1010
E-mail: Jeannine.Lepine@forces.gc.ca

Fax: (613) 995-3155

CONTACT NAMES and NUMBERS **LIAISON OFFICERS - 5 VOTING AREAS**

1. Voting HQ Ottawa

Deployed Operations

LCol C.T. Cragg

Tel: (613) 945-2030

Fax: (613) 949-3188

E-mail:

Colin.Cragg@forces.gc.ca

(Québec)

LCol P. Robichaud

Tel: (613) 992-4890

Fax: (613) 996-7652

E-mail:

Patrick.Robichaud@forces.gc.ca

NDHQ Ottawa

LCol S. Burt

Tel: (613) 971-7715

Fax: (613) 971-7707

E-mail:

Susan.Burt@forces.gc.ca

(Ontario)

Cdr F. Boyes

Tel: (613) 992-4973

Fax: (613) 943-6309

E-mail:

Fraser.Boyes@forces.gc.ca

(RMS Finance - Ottawa)

Sgt S. Hamelin

Tel: (613) 997-9725

Fax: (613) 994-4311

E-mail:

Steven.Hamelin@forces.gc.ca

CONTACT NAMES/NUMBERS

LIAISON OFFICERS - 5 VOTING AREAS

2. Voting HQ Edmonton

CLS (Land)

Lcol K.J. McLoughlin

(Edmonton)

Tel: (780) 973-4011 ext. 5707

CSN 528-5707

Fax: (780) 973-1415

E-mail:

Kevin.McLoughlin@forces.gc.ca

CAS (Air)

LCol D. Clouter

(Winnipeg)

Tel: (204) 833-2500 ext. 5281

CSN 257-5281

Fax: (780) N/A

E-mail:

Danielle.Clouter@forces.gc.ca

CMS (Navy)

Cdr B. Boutin

(Esquimalt)

Tel: (250) 360-4016

CSN 333-4016

Fax: (250) 363-4074

E-mail:

Brigitte.Boutin@forces.gc.ca

CONTACT NAMES/NUMBERS

LIAISON OFFICERS - 5 VOTING AREAS

3. Voting HQ Halifax

CLS (Land)

LCol John Woodgate

Tel: (902) 427-0757

CSN: 427-0757

Fax: (902) 427-0504

E-mail:

John.Woodgate@forces.gc.ca

CAS (Air)

LCol M. Chinner

Tel: (902) 720-1191

CSN: 720-1191

Fax: (902) 720-4095

Email:

Mark.Chinner@forces.gc.ca

CMS (Navy)

Maj R.G. Doucet

Tel: (902) 721-8114

CSN: 721-8114

Fax: (902) 721-0330

E-mail:

Rod.Doucet@forces.gc.ca

CONTACT NAMES/NUMBERS

LIAISON OFFICERS - 5 VOTING AREAS

4. Voting HQ CFSU(E) Geilenkirchen **(Germany)**

CLS (Land)

LCol P.N. Feuerherm

Tel: +49-2451-717100

Fax: +49-2451-717253

Email:

Patrick.Feuerherm@forces.gc.ca

(RMS – Admin)

WO S. McLeod

Tel: 011-49-2451-717134

Fax: 011-49-2451-717253

Email:

Suzanne.McLeod@forces.gc.ca

CONTACT NAMES/NUMBERS

LIAISON OFFICERS - 5 VOTING AREAS

5. Voting HQ Washington

CLS (Land)

LCol D. Smith

Tel: (202) 682-7763

CSN: 312-251-3550

Fax: (202) 682-7643

Email:

Daniel.Smith@forces.gc.ca

(RMS – Admin)

MCpl R. Lehnen

Tel: (202) 282-7667

CSN: 312-251-3574

Fax: (202) 682-7673

Email:

Robert.Lehnen@forces.gc.ca