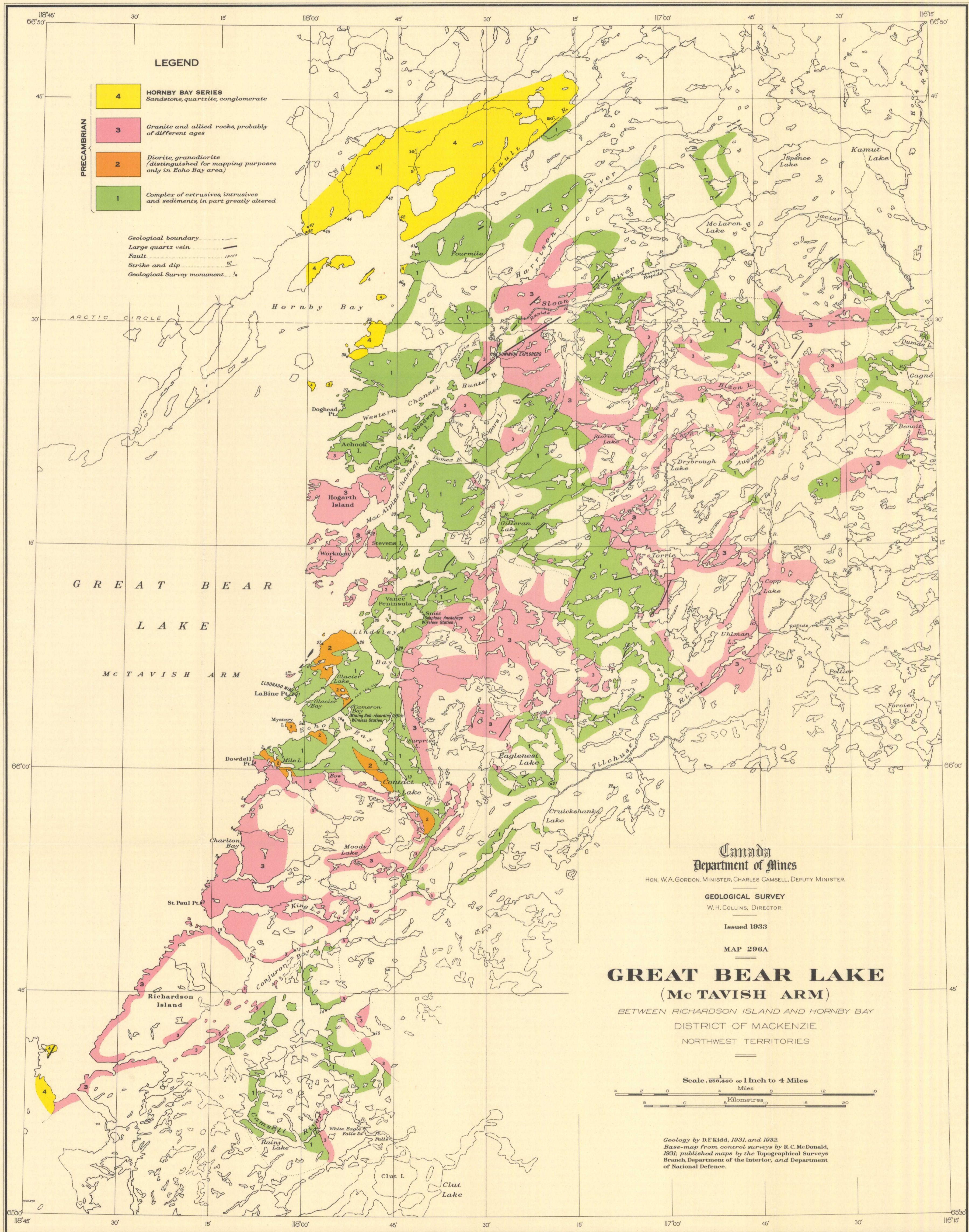


296A



- LEGEND**
- 4** HORNBY BAY SERIES
Sandstone, quartzite, conglomerate
 - 3** Granite and allied rocks, probably of different ages
 - 2** Diorite, granodiorite (distinguished for mapping purposes only in Echo Bay area)
 - 1** Complex of extrusives, intrusives and sediments, in part greatly altered

Geological boundary
Large quartz vein
Fault
Strike and dip
Geological Survey monument

Canada
Department of Mines
HON. W.A. GORDON, MINISTER; CHARLES CAMSELL, DEPUTY MINISTER.
GEOLOGICAL SURVEY
W.H. COLLINS, DIRECTOR.

Issued 1933
MAP 296A
GREAT BEAR LAKE
(McTAVISH ARM)
BETWEEN RICHARDSON ISLAND AND HORNBY BAY
DISTRICT OF MACKENZIE
NORTHWEST TERRITORIES



Geology by D.F. Kidd, 1931, and 1932.
Base-map from control surveys by R.C. McDonald, 1931; published maps by the Topographical Surveys Branch, Department of the Interior, and Department of National Defence.

To accompany report by D.F. Kidd, in Summary Report, Part C, 1932.

NOT TO BE TAKEN FROM LIBRARY
NE PAS SORTIR DE LA BIBLIOTHEQUE

296A