



a classification of

APARTMENT HOUSE PLANS

prepared by

**CENTRAL MORTGAGE
AND HOUSING
CORPORATION**

1951

a classification of

**APARTMENT
HOUSE
PLANS**

prepared by

CENTRAL MORTGAGE AND HOUSING CORPORATION

1951

INDEX

INTRODUCTION	3
ACCESS VARIATIONS OF THE SIX WALK-UP BUILDING TYPES	5
STRIP TYPE PLAN	6
Two units/landing	6
Three units/landing	38
Four units/landing	40
Eight units/landing	50
Twelve units/landing	54
T TYPE PLAN	56
Z TYPE PLAN	62
L TYPE PLAN	66
Y TYPE PLAN	68
OFF-SET CROSS TYPE PLAN	74
CROSS TYPE PLAN	78
PENTAGONAL TYPE PLAN	86
SQUARE TYPE PLAN	88
BALCONY ACCESS TYPE PLAN	96
IRREGULAR TYPE PLAN	100
MAISONETTES	102
GROUPING OF BUILDINGS	
Strip	108
T	109
Z	110
L	111
Y	112
Cross & Off-set cross	113
INDEX TO PLAN REFERENCES	114

INTRODUCTION

This is a reference book of apartment-house plans. It is based on a system of classification by which plans of similar types are grouped together in succeeding order of complexity. It begins with the simplest form of multiple housing in which there are two dwelling units on each floor of a rectangular building and then describes the various elaborations of plan forms. The examples presented in the book may be regarded as prototypes of each type of plan; in each case the example has been selected because it appeared to be a well-designed version of that particular type.

There are, of course, infinite varieties of apartment-house plans that may be devised. For the most part, however, it will be found that these are variants upon a few basic types. For there are a limited number of ways in which a group of dwelling units can be fitted together to form an economical and convenient building. For those who are concerned in the financing, designing or constructing of such buildings, this index of prototypes may therefore be of some interest. It provides a basis of comparison and reference in considering the type of plan that may be suitable under any particular circumstances of site and location. It is not the purpose of this book to recommend the merits of any particular type of plan, but rather to illustrate the range and variety of basic plan forms that are available to the designer. It must always remain the task of the architect to devise dwelling unit plans and compose these into buildings and groups of buildings which meet the special requirements of the site, the tenants and the owner.

The first part of the book classifies plans into the principal classes. The second part demonstrates the ways in which these building forms can be combined to form a variety of compositions on the site. This is followed by an index of sources. A few illustrations have been included in the book to suggest the three-dimensional forms that may be derived from the basic plans.

The largest class of plans is described as the STRIP type. This is a class of buildings of rectangular form which may have two, three, four or more units served from a single landing and central stairs. The first of these, access-in-pairs, lends itself to a lineal development by adjoining any number of buildings in a row; this is possible because light is only required on the front and back of the units. The access-in-fours type of plan can be developed in length by elongating the central landing to serve more units on each floor. Other types of plans are described as T, Z, L, Y, CROSS, OFF-SET CROSS, PENTAGON, etc. These are exemplified here in order of complexity, so that those suitable as 'walk-ups' are shown first. This index does not include the more elaborate forms of apartment-house such as those with split-level units and skip-stop elevators. The majority of plans are drawn to the scale of 1/20th inch to 1 foot.

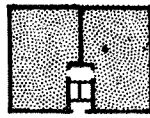
The second part of the book shows examples of building groups. This demonstrates the great variety of building forms available through the combination of standard types. Just as the dwelling unit is a component part of a building block, so each block may form one piece in a whole architectural composition on the site.

The illustrations which have been included are intended primarily to show that an extremely simple form of architectural design may be most effective if attention is given to the general proportions of buildings, to the proper use of materials and to the details of windows, eaves and balconies. The effectiveness of an apartment-house lay-out depends upon the general composition of building masses and their relationship with open spaces. A well-composed group of buildings is not improved by the addition of superficial ornaments such as shutters and 'period' decorations. The most satisfactory contrasts to bare wall-surfaces are the branches of trees and the light and shade of foliage.

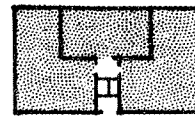
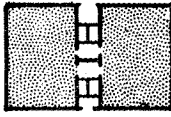
The research and drawings for this classification index were done by Mrs. Jean D. Strange.

SIX BASIC WALK-UP BUILDING TYPES

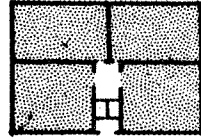
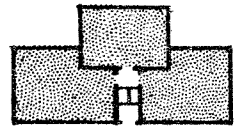
STRIP TYPE



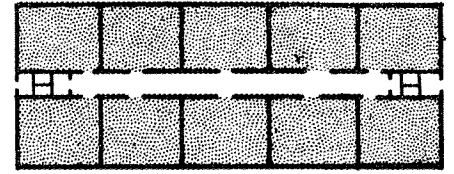
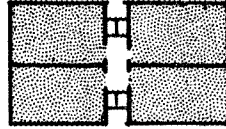
TWO TO A LANDING



THREE TO A LANDING

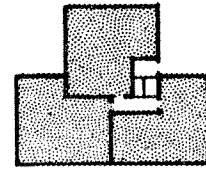
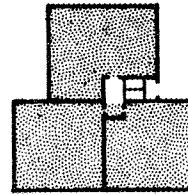
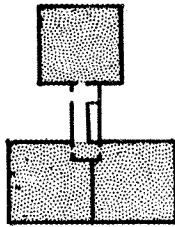


FOUR TO A LANDING

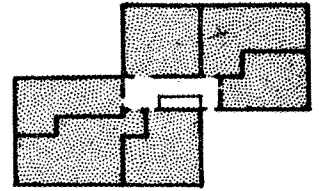
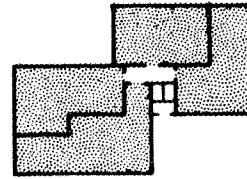
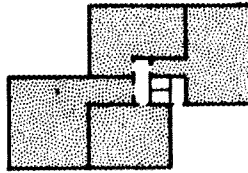
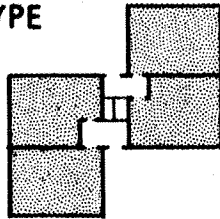


MORE THAN FOUR TO A LANDING

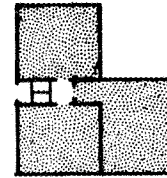
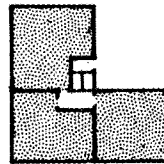
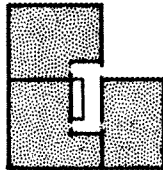
T - TYPE



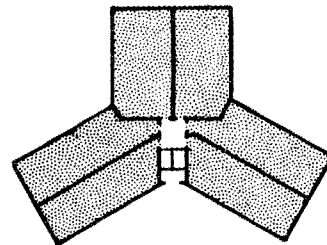
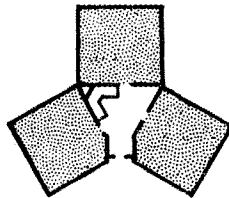
Z - TYPE



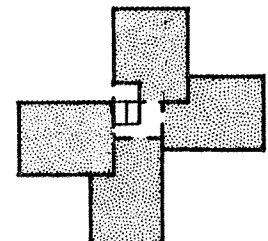
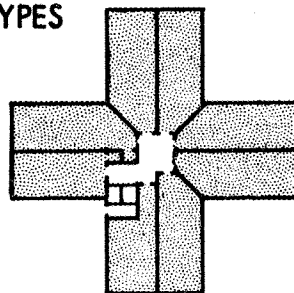
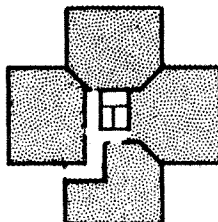
L - TYPE



Y - TYPE



CROSS & OFF-SET CROSS TYPES



STRIP TYPE PLAN

2 Units/Landing

1 Bedroom

A CLASSIFICATION OF

- 1** PROJECT
KILLINGSWORTH PARK,
Portland, Oregon, U.S.A.
PLOT AREA 3.6 acres containing play area and parking facilities.
BUILDING COVERAGE 22% of net area.
NO. OF BUILDINGS 11.
DENSITY 29.3 dwelling units/net acre.
DWELLING TYPES Three and four room dwelling units.
CONSTRUCTION Frame.
AMENITIES Enclosed play areas and drying yards, parking facilities.

- 2** PROJECT
ORDWAY GARDENS,
Washington D.C., U.S.A.
PLOT AREA 13 acre steep and rugged site.
BUILDING COVERAGE 14% of net area.
NO. OF BUILDINGS 38 buildings grouped into 8 blocks.
DENSITY 25 dwelling units/net acre.
DWELLING TYPES 228 three and four room dwelling units.
AMENITIES Parking areas provided.

- 3** EXAMPLE
From 'PLANNING RENTAL HOUSING PROJECTS'
U.S. Federal Housing Administration.

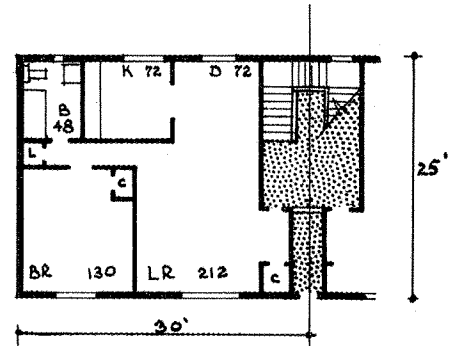
- 4** EXAMPLE
From 'PLANNING RENTAL HOUSING PROJECTS'
U.S. Federal Housing Administration.

APARTMENT HOUSE PLANS

STRIP TYPE PLAN 2 Units/Landing 1 Bedroom

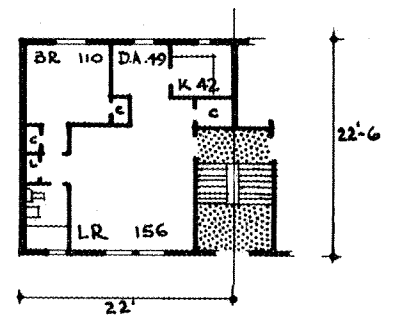
KILLINGSWORTH PARK,
Portland, Oregon, U.S.A.

1



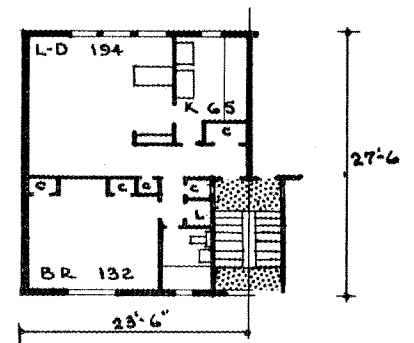
ORDWAY GARDENS,
Washington, D.C., U.S.A.

2



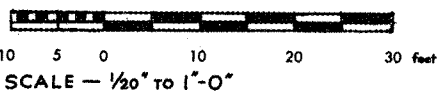
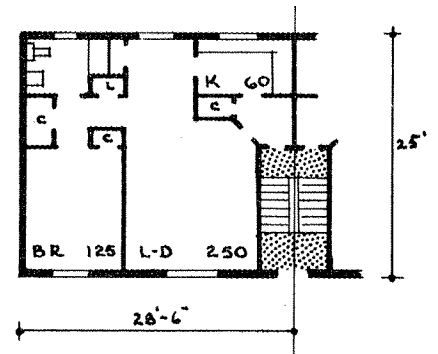
Example from F.H.A.

3



Example from F.H.A.

4



STRIP TYPE PLAN
2 Units/Landing
1 Bedroom
Service Stairs

A CLASSIFICATION OF

5	PROJECT	CALLAWAY APARTMENTS, Georgia Tech, Atlanta, Georgia, U.S.A. Stevens & Wilkinson, Inc. November, 1947. Approximately 4.3 acres of gently sloping ground. 17 two and three storey buildings grouped into 3 blocks. 156 two, three and four room dwelling units. Fire-resistant construction. Children's play and parking areas. Commercial gas system.
	ARCHITECTS	
	COMPLETION DATE	
	PLOT AREA	
	NO. OF BUILDINGS	
	DWELLING TYPES	
	CONSTRUCTION	
	AMENITIES	
	HEATING	

6	EXAMPLE	From 'PLANNING RENTAL HOUSING PROJECTS' U.S. Federal Housing Administration.
----------	---------	--

7	EXAMPLE	From 'PRACTICAL BUILDER', August, 1947.
----------	---------	--

APARTMENT HOUSE PLANS

STRIP TYPE PLAN

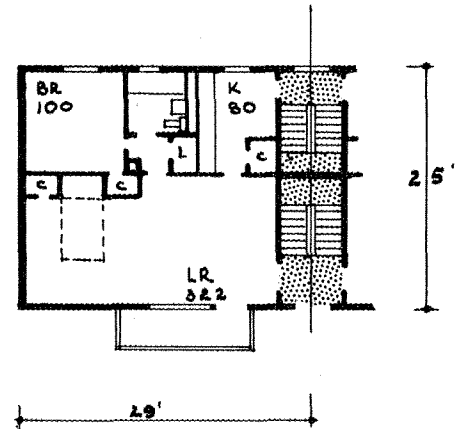
2 Units/Landing

1 Bedroom

Service Stairs

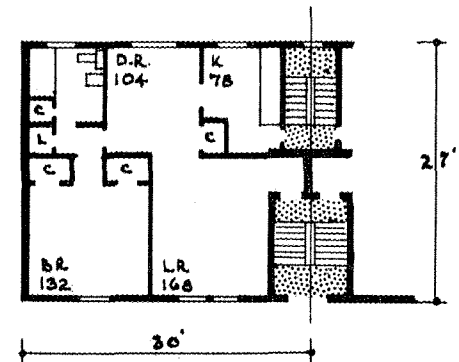
CALLAWAY APARTMENTS,
Georgia Tech, Atlanta,
Georgia, U.S.A.

5



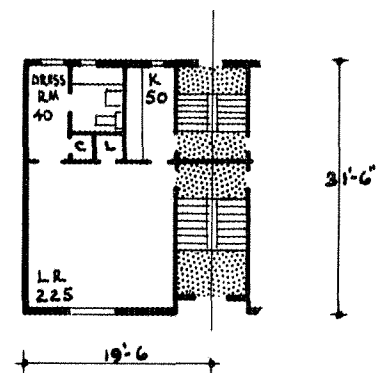
Example from F.H.A.

6



Example from 'Practical Builder'

7



SCALE — 1/20" TO 1'-0"



APARTMENTS FOR THE BOROUGH OF LAMBETH,
Elder Road, London, England.
Architects, Booth & Ledeboer.

Credit, Architectural Design, November, 1948, page 239.

STRIP TYPE PLAN

2 Units/Landing

2 Bedrooms

A CLASSIFICATION OF

8 EXAMPLE

From 'PLANNING RENTAL HOUSING
PROJECTS'

U.S. Federal Housing Administration.

9 PROJECT ARCHITECTS COMPLETION DATE PLOT AREA NO. OF BUILDINGS DWELLING TYPES CONSTRUCTION AMENITIES COST HEATING

In Seattle, Washington, U.S. A.

Miller & Ahlson.

1947.

54 acres.

44 two storey (plus basement) buildings.

544 three, four and five room dwelling
units.

Frame, with plywood exteriors & com-
position roofing.

Children's play areas, tenant parking
service and rear service yard.

\$5 million.

Tenant controlled.

APARTMENT HOUSE PLANS

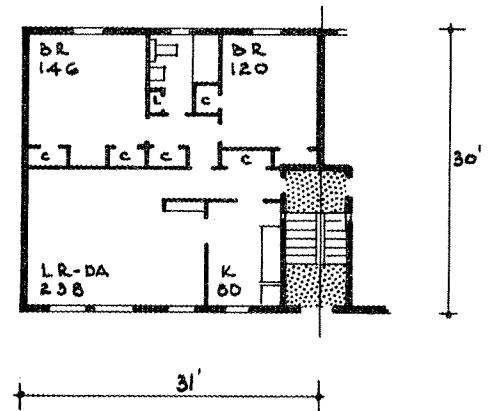
STRIP TYPE PLAN

2 Units/Landing

2 Bedrooms

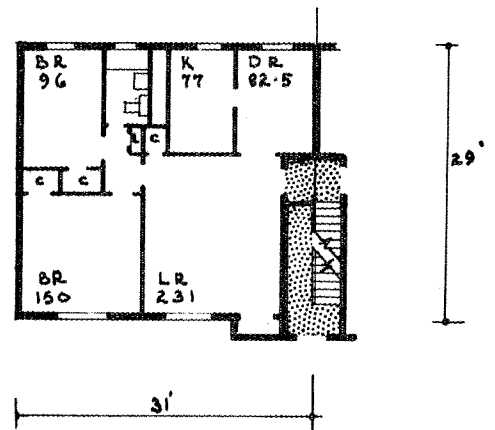
Example from F. H. A.

8



Seattle, Washington, U.S.A.

9



10 5 0 10 20 30 feet
SCALE — 1/20" TO 1'-0"

STRIP TYPE PLAN
2 Units/Landing
1 & 2 Bedrooms
Exterior Service Stairs

A CLASSIFICATION OF

10 EXAMPLE OF

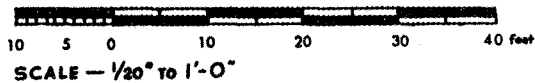
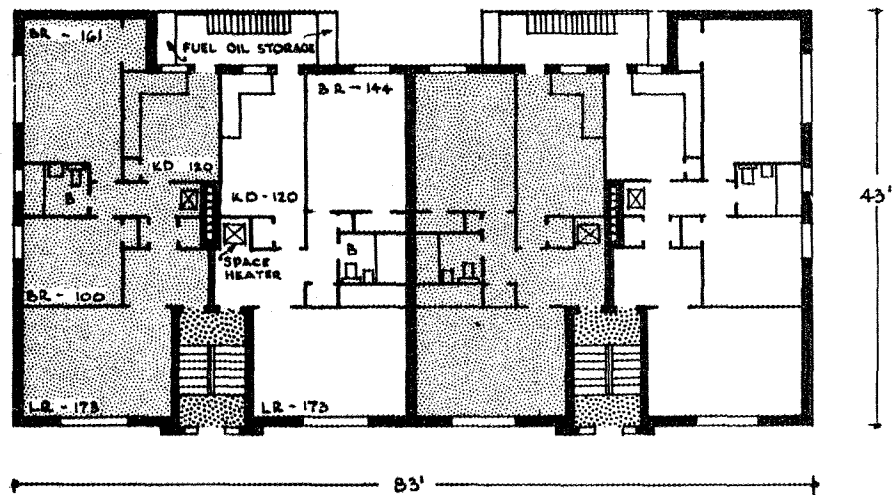
Four storey apartments, commonly known as 'cold flats' & typical of the Montreal area.

APARTMENT HOUSE PLANS

STRIP TYPE PLAN
2 Units/Landing
1 & 2 Bedrooms
Exterior Service Stairs

Typical Montreal
apartments.

10



STRIP TYPE PLAN

2 Units/Landing

2 Bedrooms

Service Stairs

A CLASSIFICATION OF

- 11** PROJECT CALLAWAY APARTMENTS,
Georgia Tech, Atlanta, Georgia, U.S.A.
ARCHITECTS Stevens & Wilkinson, Inc.
COMPLETION DATE 1947.
PLOT AREA Approximately 4.3 acres of gently sloping ground.
NO. OF BUILDINGS 17 two and three storey buildings grouped into 9 blocks.
DWELLING TYPES 156 two, three and four room dwelling units.
CONSTRUCTION Fire-resistant construction.
AMENITIES Children's play areas and parking areas.
HEATING Commercial gas system.
- 12** PROJECT Clayton, Missouri, U.S.A.
ARCHITECT Bernard McMahon.
COMPLETION DATE Late '40s.
NO. OF BUILDINGS 86 two storey, four family buildings on lots 80' X 130' facing on to a new city park.
DWELLING TYPES Four room dwelling units.
CONSTRUCTION Fire-resistant construction.
- 13** PROJECT MANN AVENUE APARTMENTS,
Ottawa, Ontario.
ARCHITECTS Central Mortgage and Housing Corporation.
COMPLETION DATE 1949.
PLOT AREA 26.3 acres including 12.5 acres of park area.
NO. OF BUILDINGS 64 two and three storey (plus basement) buildings, grouped into 24 blocks.
DENSITY 67 persons/acre.
DWELLING TYPES 418 four and five room dwelling units.
CONSTRUCTION Frame construction, with brick veneer.
AMENITIES Parks and playgrounds with sandboxes, wading pool.
COST \$3.372 million.
HEATING Central heating plant.

APARTMENT HOUSE PLANS

STRIP TYPE PLAN

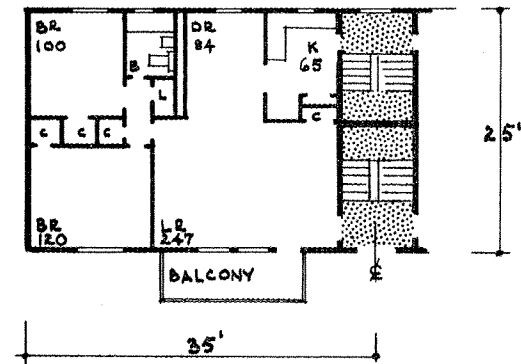
2 Units/Landing

2 Bedrooms

Service Stairs

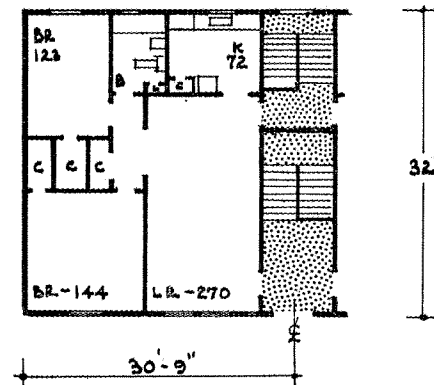
CALLAWAY APARTMENTS,
Atlanta Georgia, U. S. A.

11



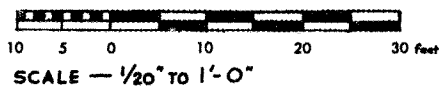
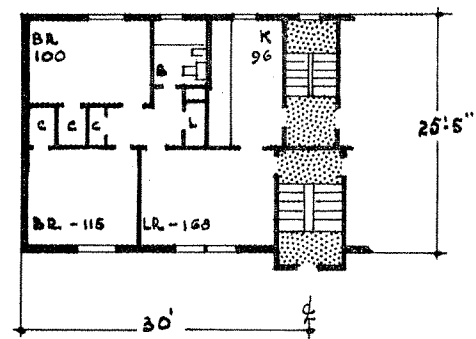
Clayton, Missouri,
U. S. A.

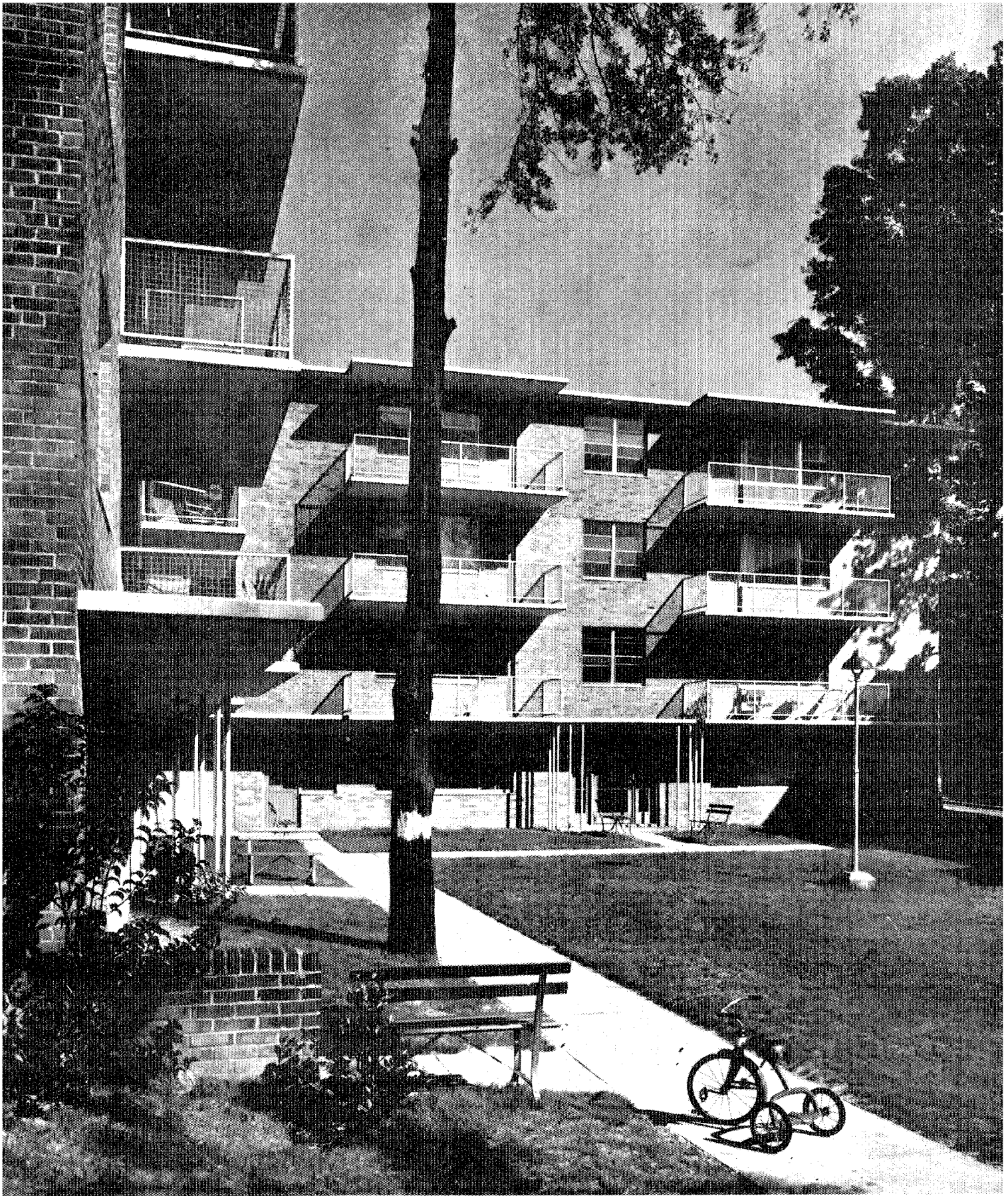
12



MANN AVENUE APARTMENTS,
Ottawa, Ontario.

13





CALLAWAY APARTMENTS, Atlanta, Georgia, U.S.A.

Architects, Stevens & Wilkinson, Inc.

STRIP TYPE PLAN
2 Units/Landing
2 Bedrooms
Service Stairs

A CLASSIFICATION OF

14	PROJECT	TUFT'S COVE, Dartmouth, Nova Scotia.
	ARCHITECTS	Central Mortgage and Housing Corporation
	COMPLETION DATE	1951.
	SITE	Rocky promontory opposite Halifax and commanding magnificent view of the Nar- rows and the harbour.
	NO. OF BUILDINGS	81 two and three storey (plus basement) buildings grouped into 33 blocks.
	DWELLING TYPES	521 four and five room dwellings (with balconies).
	CONSTRUCTION	Poured concrete.
	AMENITIES	School, parks and playgrounds.
	HEATING	Central heating plant.

APARTMENT HOUSE PLANS

STRIP TYPE PLAN

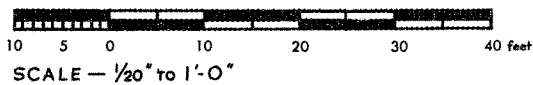
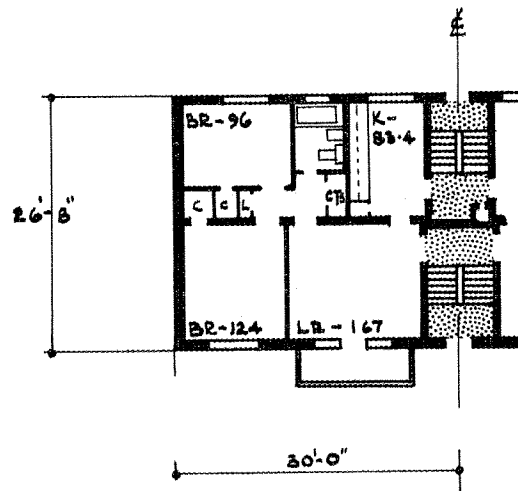
2 Units/Landing

2 Bedrooms

Service Stairs

TUFT'S COVE,
Dartmouth, N.S.

14



STRIP TYPE PLAN

2 Units/Landing

3 Bedrooms

A CLASSIFICATION OF

15	PROJECT	MELLISH STREET APARTMENTS, Poplar, London, England.
	ARCHITECTS	Ministry of Works, Architects' Department.
	COMPLETION DATE	1948.
	SITE	A bomb damaged site formerly occupied by cottages.
	NO. OF BUILDINGS	2 three storey buildings combined into one block.
	DWELLING TYPES	Five room dwelling units (with balconies).
	CONSTRUCTION	Precast concrete stanchions and beams with external walls of precast concrete slabs.

APARTMENT HOUSE PLANS

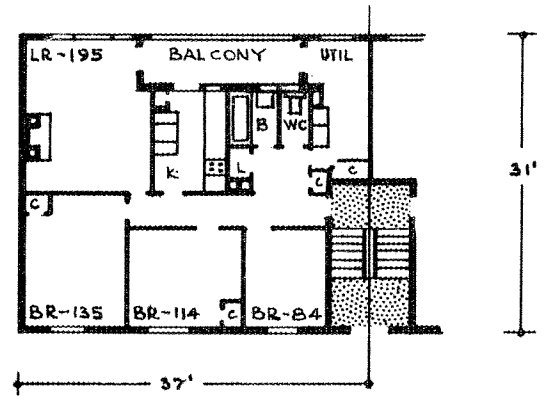
STRIP TYPE PLAN

2 Units/Landing

3 Bedrooms

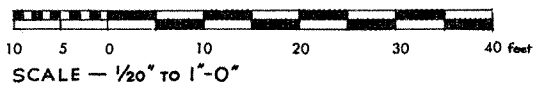
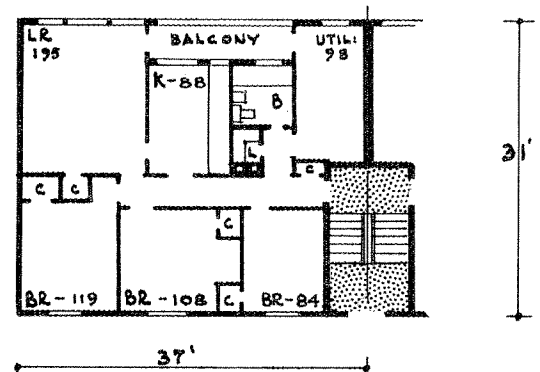
MELLISH STREET APARTMENTS,
Poplar, London, England.

15



Adaptation of above plan to fit
Canadian requirements.

15a



STRIP TYPE PLAN
2 Units/Landing
3 Bedrooms
Exterior Service Stairs

A CLASSIFICATION OF

16 EXAMPLE OF

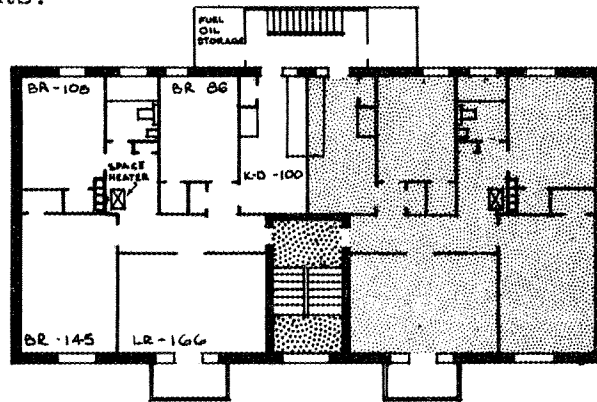
Four storey apartments, commonly known as 'cold flats' & typical of the Montreal area.

APARTMENT HOUSE PLANS

STRIP TYPE PLAN
2 Units/Landing
3 Bedrooms
Exterior Service Stairs

Typical Montreal Apartments.

16



10 5 0 10 20 30 40 feet
SCALE — 1/20" TO 1'-0"

STRIP TYPE PLAN
2 Units/Landing
2 & 3 Bedrooms
Service Stairs

A CLASSIFICATION OF

17	PROJECT	ALLANDALE FLATS, Churchill Park Village, St. John's, Newfoundland.
	ARCHITECTS	A.E. Searles and Paul Meschino.
	COMPLETION DATE	Late '40s.
	SITE	800 acre valley located behind St. John's for development into a community of mixed housing to be known as Churchill Park Village.
	NO. OF BUILDINGS	6 "walkup" buildings grouped into one superblock. Height varies between 2 and 3 stories (plus basement). There are two of these superblocks.
	DWELLING TYPES	26 five and six room dwelling units/ superblock.
	CONSTRUCTION	Concrete block basements, frame walls and flat roofs.

APARTMENT HOUSE PLANS

STRIP TYPE PLAN

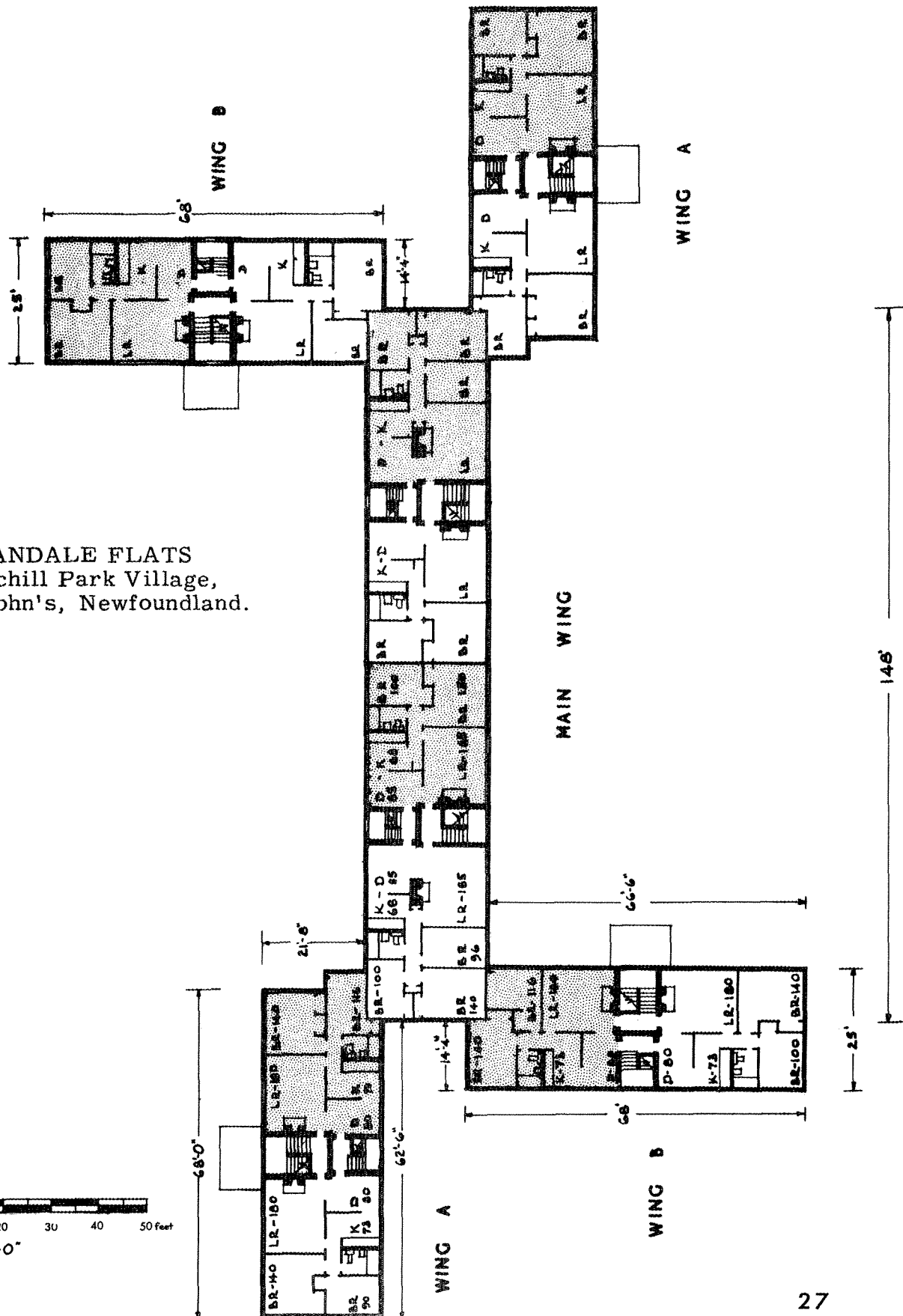
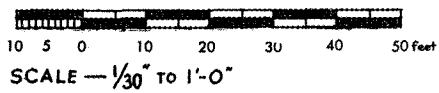
2 Units/Landing

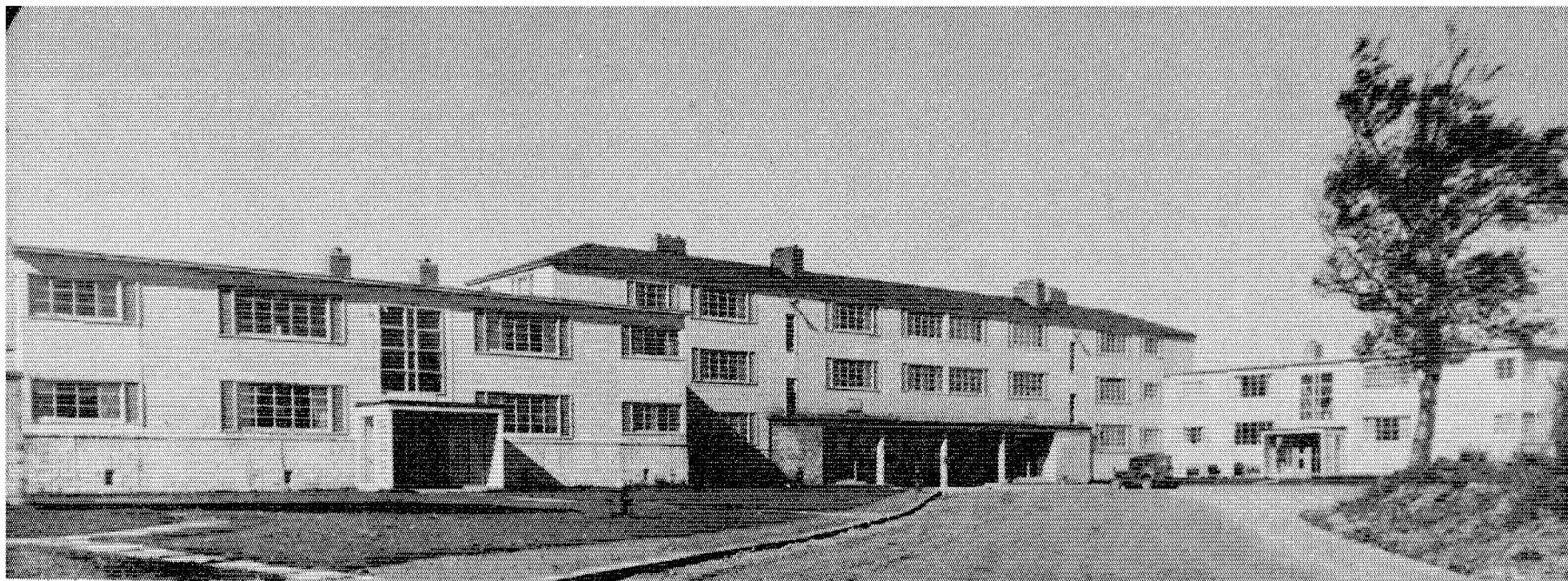
2 & 3 Bedrooms

Service Stairs

ALLANDALE FLATS
Churchill Park Village,
St. John's, Newfoundland.

17





ALLANDALE APARTMENTS, Churchill Park Village, St. John's, Newfoundland.

Architects, Searles & Meschino.

Credit, Marshall Studios Limited, St John's, Nfld.

STRIP TYPE PLAN

2 Units/Landing

3 Bedrooms

Service Stairs

A CLASSIFICATION OF

- | | | |
|-----------|---|---|
| 18 | <p>PROJECT</p> <p>ARCHITECTS
COMPLETION DATE
SITE</p> <p>NO. OF BUILDINGS</p> <p>DWELLING TYPES</p> <p>CONSTRUCTION
AMENITIES
HEATING</p> | <p>TUFT'S COVE,
Dartmouth, Nova Scotia.
Central Mortgage and Housing Corporation.
1951.
Rocky promontory opposite Halifax and
commanding magnificent view of the Nar-
rows and the harbour.
81 two and three storey (plus basement)
buildings grouped into 33 blocks.
521 four and five room dwellings (with
balconies)
Poured concrete.
School, parks and playgrounds.
Central heating plant.</p> |
|
 | | |
| 19 | <p>PROJECT</p> <p>ARCHITECTS
COMPLETION DATE
PLOT AREA</p> <p>NO. OF BUILDINGS</p> <p>DENSITY
DWELLING TYPES
CONSTRUCTION
AMENITIES</p> <p>COST
HEATING</p> | <p>MANN AVENUE APARTMENTS,
Ottawa, Ontario.
Central Mortgage and Housing Corporation.
1949.
26.3 acres including 12.5 acres of park
area.
64 two and three storey (plus basement)
buildings grouped into 24 blocks.
67 persons/acre.
418 four and five room dwelling units.
Frame construction, with brick veneer.
Parks and playgrounds with sandboxes,
wading pool.
\$3.372 million.
Central heating plant.</p> |

APARTMENT HOUSE PLANS

STRIP TYPE PLAN

2 Units/Landing

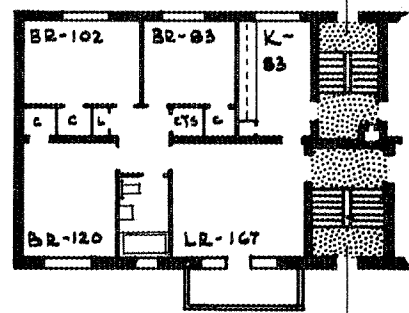
3 Bedrooms

Service Stairs

TUFT'S COVE,
Dartmouth, N.S.

18

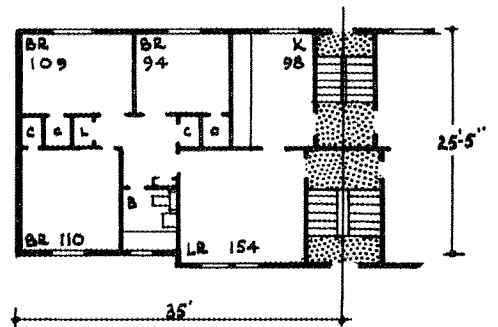
26'-6"



35'-0"

MANN AVENUE APARTMENTS,
Ottawa, Ontario.

19



35'

25'-5"

10 5 0 10 20 30 40 feet
SCALE — 1/20" TO 1'-0"



PINEBUD APARTMENTS, Churchill Park Village, St. John's, Newfoundland

Architects, Searles & Meschino.

Credit, Marshall Studios Limited, St John's, Nfld.

STRIP TYPE PLAN

2 Units/Landing

3 Bedrooms

Service Stairs

A CLASSIFICATION OF

20	PROJECT	WINCHESTER HOOD APARTMENTS, Chicago, Ill., U.S.A.
	ARCHITECTS	Holsman, Holsman, Klekamp & Taylor.
	COMPLETION DATE	1949.
	BUILDINGS	4 storey walkups & 5 storey elevator buildings.
	DWELLING TYPES	Approximately 800 four to six room apartments in four storey walkups & five storey elevator buildings.
	CONSTRUCTION	Reinforced rowlock brick masonry walls, concrete block partitions. Flat roofs. Prefabricated floor slabs set in prefabri- cated steel forms.
	HEATING	Radiant heating in the ceiling joist boxes.
	COST	These apartments are noteworthy for their construction which has resulted in a net cost per month to the tenants of from 1/3 to 1/2 less than comparable typical F.H.A. garden apartment type dwelling units.

APARTMENT HOUSE PLANS

STRIP TYPE PLAN

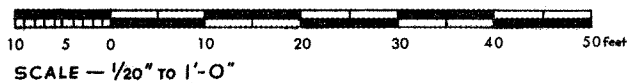
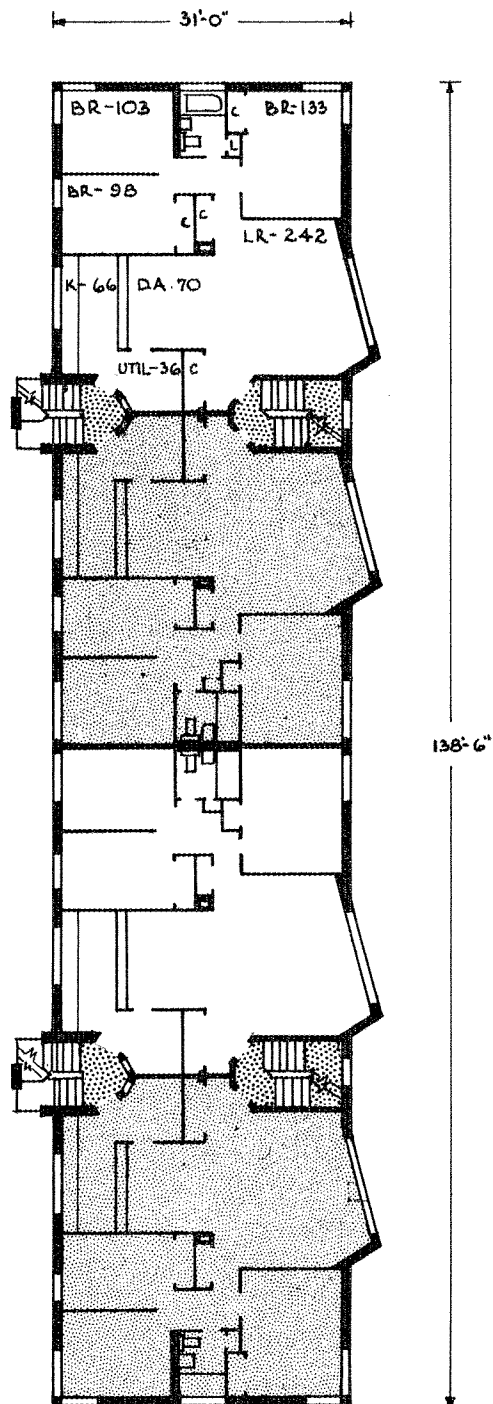
2 Units/Landing

3 Bedrooms

Service Stairs

WINCHESTER HOOD APARTMENTS,
Chicago, Illinois, U.S.A.

20



STRIP TYPE PLAN
2 Units/Landing
4 Bedrooms

A CLASSIFICATION OF

21 EXAMPLE

From "HOME & ENVIRONMENT" by
Walter Segal.

APARTMENT HOUSE PLANS

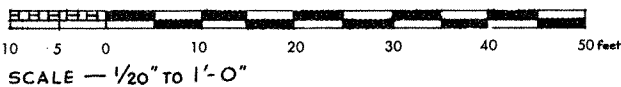
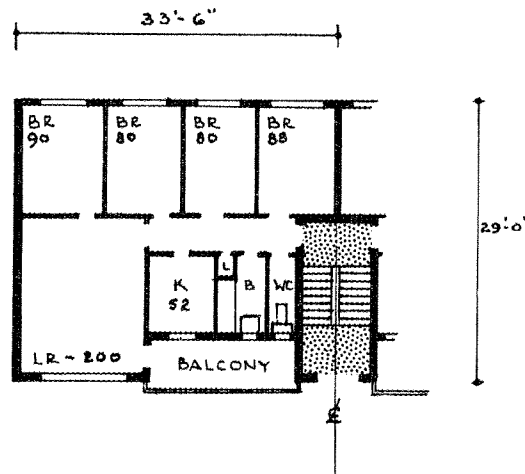
STRIP TYPE PLAN

2 Units/Landing

4 Bedrooms

Example from
"Home &
Environment"

21



STRIP TYPE PLAN
3 Units/Landing
1 & 2 Bedrooms

A CLASSIFICATION OF

22	PROJECT	NEW POND HOUSE, Chelsea, London, England.
	ARCHITECT	Edward Armstrong.
	COMPLETION DATE	1948.
	NO. OF BUILDINGS	Four buildings of three units/landing access type & two buildings of balcony access type.
	DWELLING TYPES	20 one bedroom, 30 two bedroom, 10 three bedroom and 32 elderly single people's dwellings, totalling 92 dwell- ings.
	CONSTRUCTION	Reinforced concrete frame with brick panel walls, reinforced concrete floors and roof slabs, with cantilevered bal- conies and hollow tile interior partitions.
	AMENITIES	Laundry & drying rooms, pram sheds & play areas.

APARTMENT HOUSE PLANS

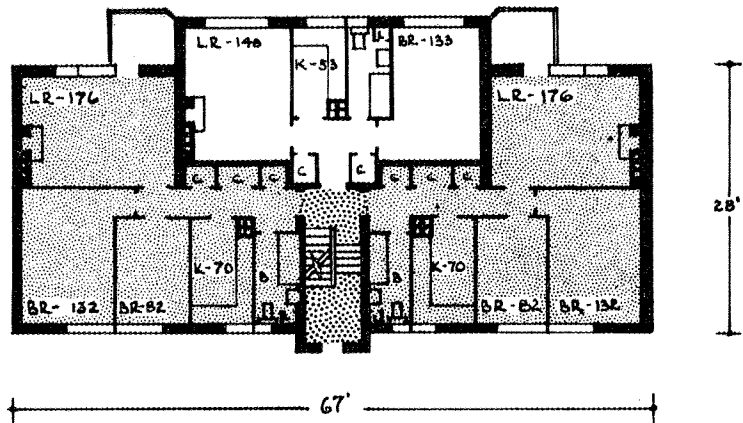
STRIP TYPE PLAN

3 Units/Landing

1 & 2 Bedrooms

NEW POND HOUSE,
Chelsea, London,
England.

22



10 5 0 10 20 30 40 feet
SCALE — 1/20" TO 1'-0"

STRIP TYPE PLAN
4 Units/Landing
Bed-Sitting & 1 Bedroom

A CLASSIFICATION OF

23 EXAMPLE

From "PLANNING RENTAL HOUSING
PROJECTS"
U.S. Federal Housing Authority.

APARTMENT HOUSE PLANS

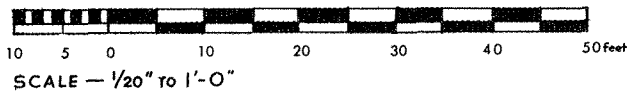
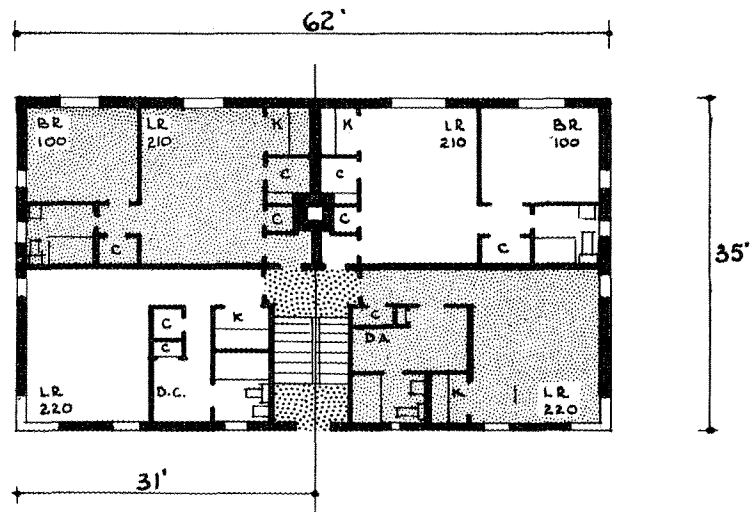
STRIP TYPE PLAN

4 Units/Landing

Bed-Sitting and 1 Bedroom

Example from F. H. A.

23



STRIP TYPE PLAN

4 Units/Landing

1 & 2 Bedrooms

A CLASSIFICATION OF

- 24** PROJECT SOUTH JAMAICA HOUSES,
New York City, N.Y., U.S.A.
ARCHITECTS Dan P. Higgins, Carl A. Vollmer, and
Fred G. Frost.
PLOT AREA 9.12 net acres.
BUILDING COVERAGE 21%.
NO. OF BUILDINGS 33 three & four storey buildings grouped
into 6 three storey & 5 four storey blocks.
DENSITY 128 persons/net acre.
DWELLING TYPES 448 three & four room dwelling units.
CONSTRUCTION Fire-resistant.
AMENITIES Playground, parks, allotment gardens
and a day nursery.
COST \$2.081 million total development cost;
\$4,688/dwelling unit.
- 25** PROJECT ACME CO. PROJECT,
Aberdeen, S.D., U.S.A.
COMPLETION DATE 1949.
NO. OF BUILDINGS 18 three storey (including basement)
buildings.
DWELLING TYPES 11 three and four room dwelling units/
building.
CONSTRUCTION Reinforced concrete foundations, con-
crete block exterior walls.
COST Estimated building cost \$1 million.

APARTMENT HOUSE PLANS

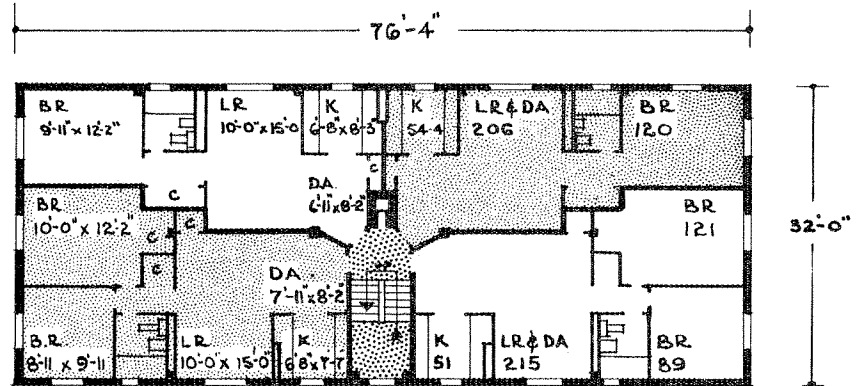
STRIP TYPE PLAN

4 Units/Landing

1 & 2 Bedrooms

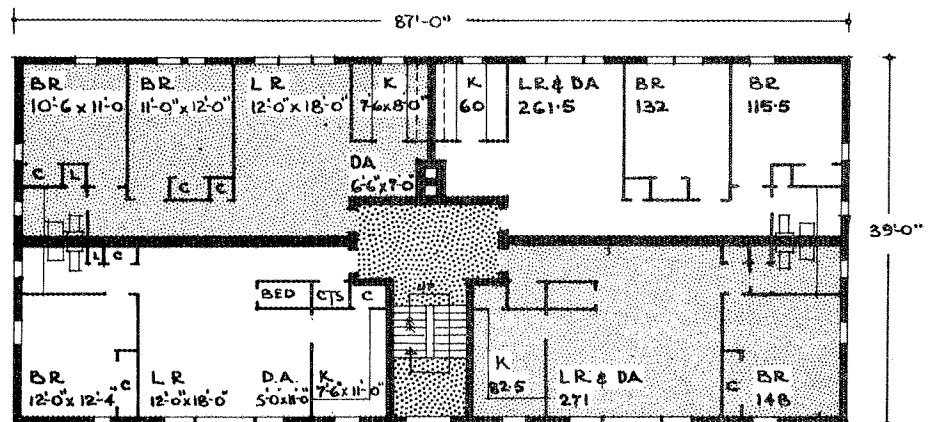
SOUTH JAMAICA HOUSES,
Queens, New York City,
N. Y., U. S. A.

24



ACME CO. PROJECT,
Aberdeen,
S. Dakota, U. S. A.

25



10 5 0 10 20 30 40 50 feet
SCALE — 1/20" TO 1"=0"

STRIP TYPE PLAN

4 Units/Landing

1 Bedroom

Service Stairs

A CLASSIFICATION OF

- 26** PROJECT CATHERINE PLACE,
Vancouver, British Columbia.
- ARCHITECT W. M. Dodd.
- COMPLETION DATE August, 1948.
- NO. OF BUILDINGS One three storey building (plus penthouse).
- DWELLING TYPES Four room dwelling units.

- 27** This design has been built in the following places:
Hamilton, Kitchener, London, Brantford and Sudbury,
all in Ontario, Canada.

APARTMENT HOUSE PLANS

STRIP TYPE PLAN

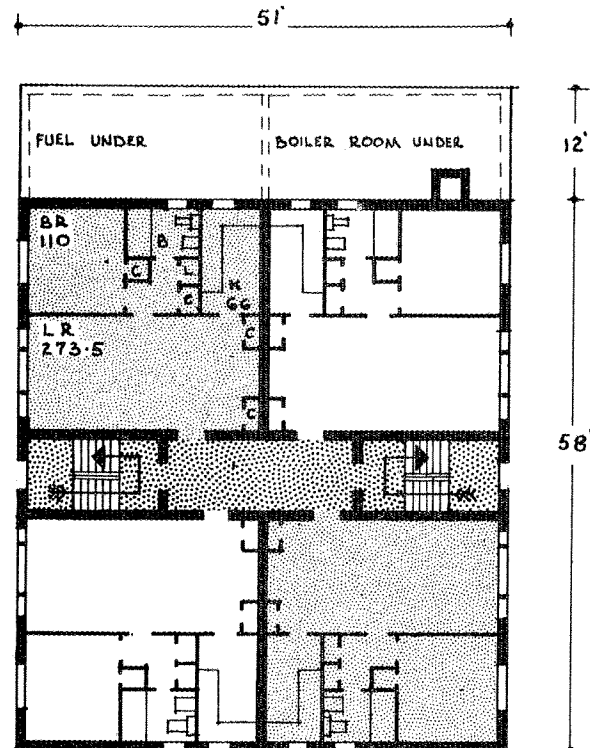
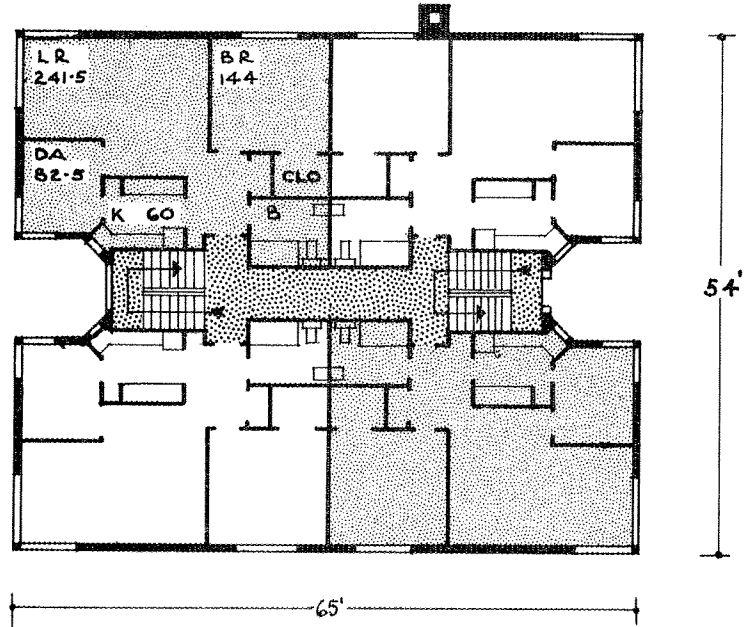
4 Units/Landing

1 Bedroom

Service Stairs

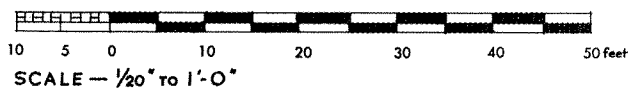
CATHERINE PLACE,
Vancouver, B.C.

26



Canadian Example

27



STRIP TYPE PLAN

4 Units/Landing

2 Bedrooms

Service Stairs

A CLASSIFICATION OF

28 This design has been built in the following places -
Toronto and Stamford Center, both in Ontario.

29 This design has been built in the following places -
Niagara Falls, Kitchener, St. Catherines, Oakville
and Burlington, all in Ontario.

APARTMENT HOUSE PLANS

STRIP TYPE PLAN

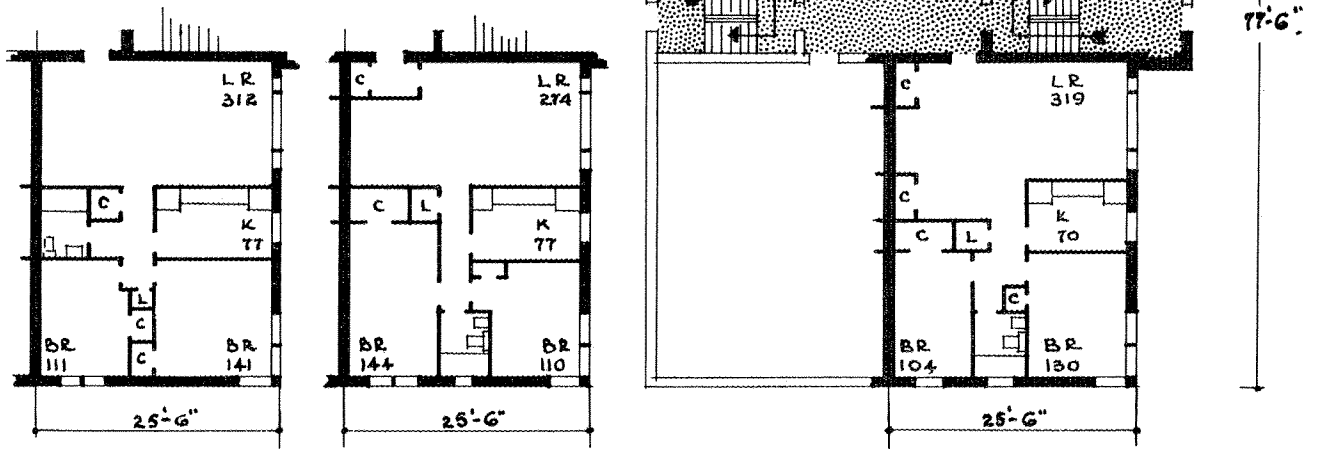
4 Units/Landing

2 Bedrooms

Service Stairs

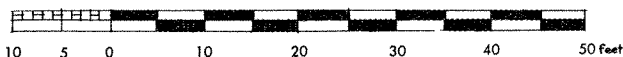
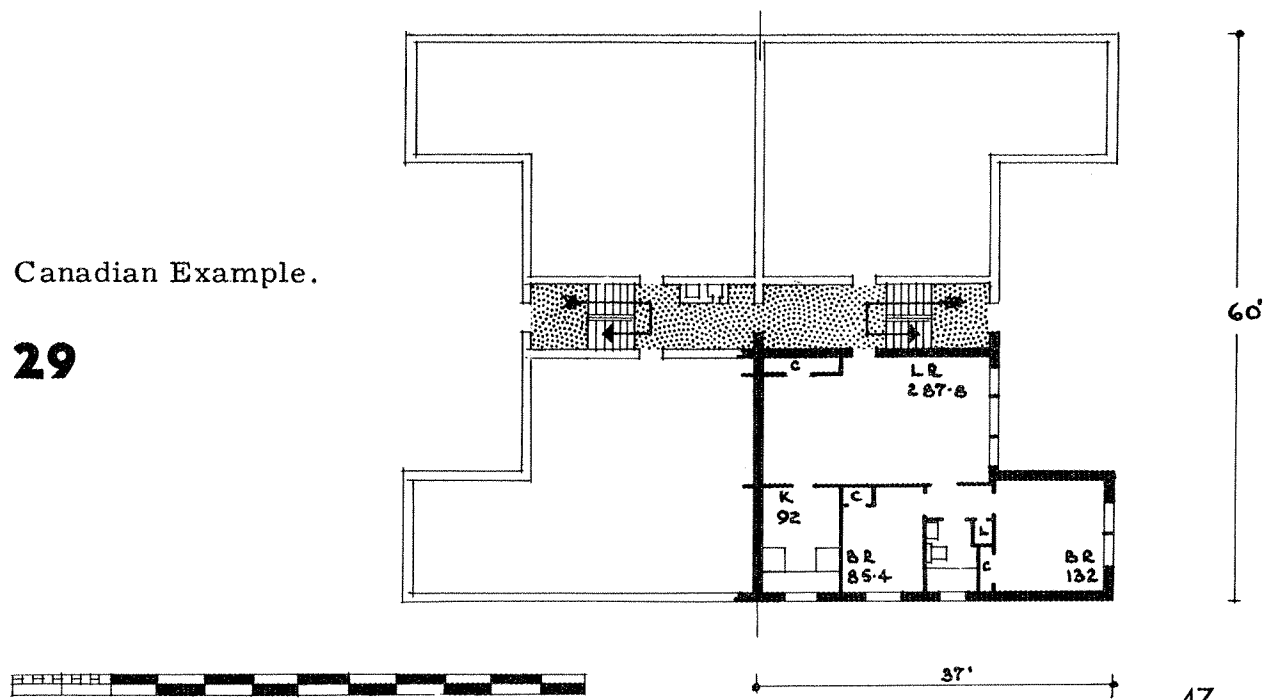
Canadian Example.

28



Canadian Example.

29



SCALE — 1/20" to 1'-0"

STRIP TYPE PLAN
4 Units/Landing
2 Bedrooms
Service Stairs & Elevator

A CLASSIFICATION OF

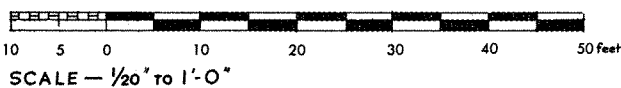
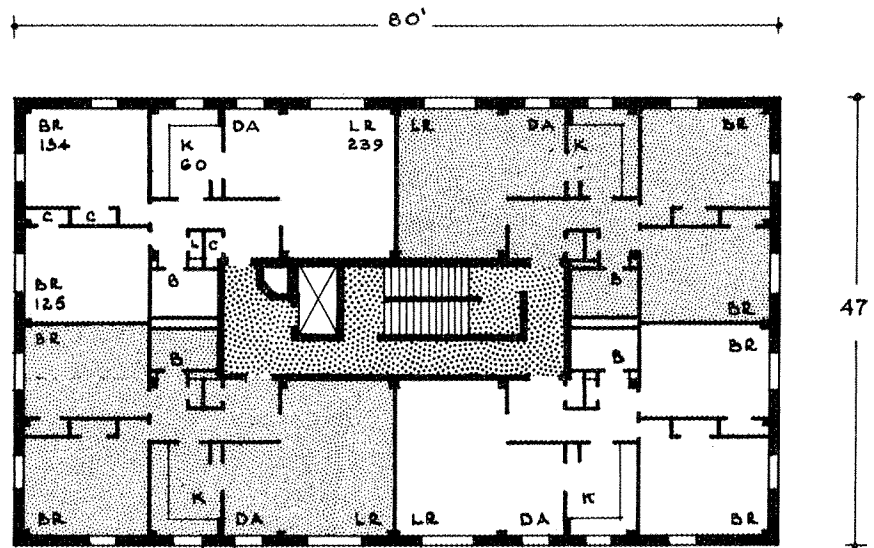
30	PROJECT	PARKSIDE HOUSES, New York City, N.Y., U.S.A.
	ARCHITECTS	Walker & Poor.
	COMPLETION DATE	Early '50s.
	BUILDING COVERAGE	19.8%.
	NO. OF BUILDINGS	3 fourteen storey blocks, 3 six storey blocks, together with 14 seven storey buildings grouped into 8 blocks, total- ling 14 blocks.
	DENSITY	257 persons/acre.
	DWELLING TYPES	879 three & four room dwelling units.
	CONSTRUCTION	Fire-resistant.

APARTMENT HOUSE PLANS

STRIP TYPE PLAN
4 Units/Landing
2 Bedrooms
Service Stairs & Elevator

PARKSIDE HOUSES,
New York City, N. Y.,
U. S. A.

30



STRIP TYPE PLAN
8 Units/Landing
2 Bedrooms
Elevators & Service Stairs

A CLASSIFICATION OF

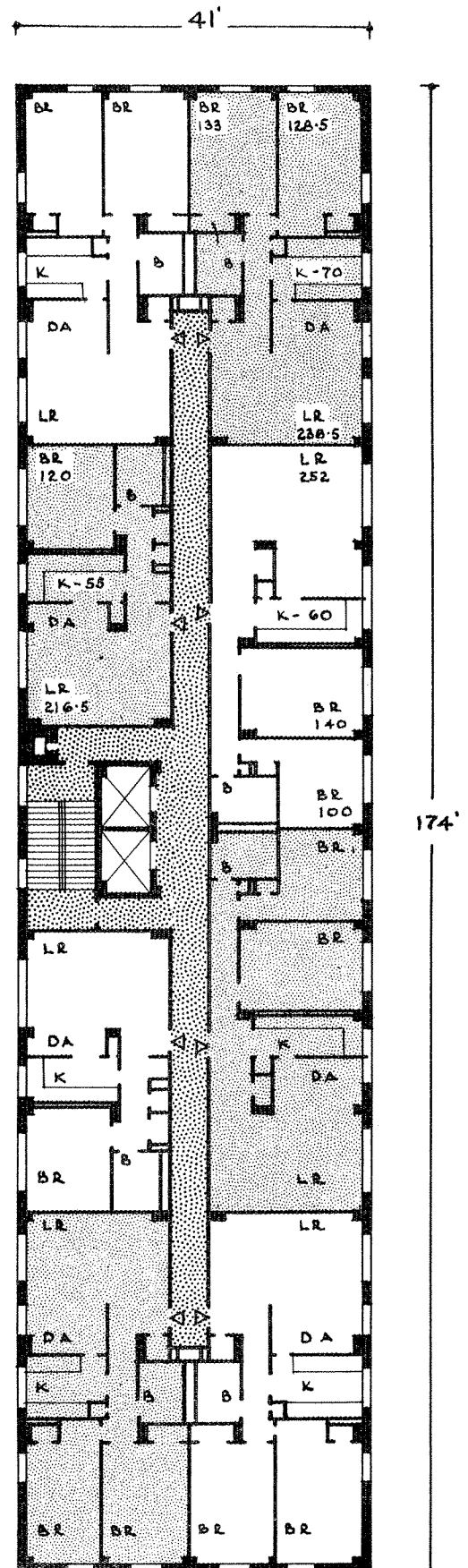
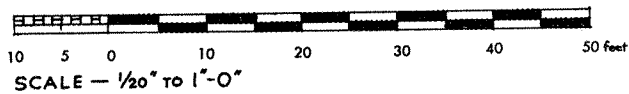
31	PROJECT	SEDGEWICK HOUSES, New York City, N.Y., U.S.A.
	ARCHITECTS	Skidmore, Owings and Merrill.
	COMPLETION DATE	Early '50s.
	BUILDING COVERAGE	18.7%.
	NO. OF BUILDINGS	7 fourteen storey buildings.
	DENSITY	346.9 persons/acre.
	DWELLING TYPES	786 three and four room dwelling units.
	CONSTRUCTION	Fire-resistant.

APARTMENT HOUSE PLANS

STRIP TYPE PLAN
8 Units/Landing
2 Bedrooms
Elevators & Service Stairs

SEDGEWICK HOUSES,
New York City,
N. Y., U. S. A.

31



STRIP TYPE PLAN

8 Units/Landing

1 & 2 Bedrooms

Elevators & Service Stairs

A CLASSIFICATION OF

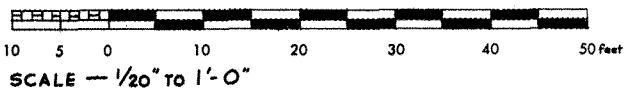
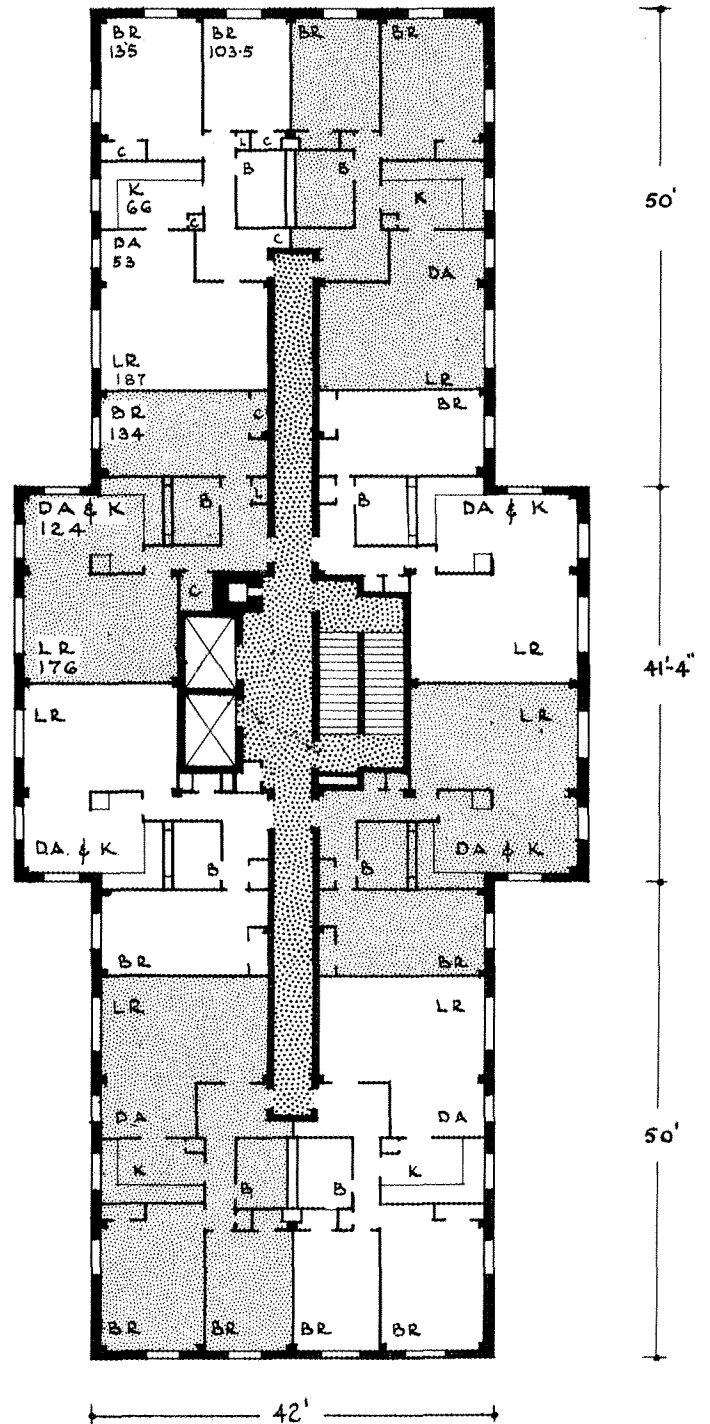
32	PROJECT	PARKSIDE HOUSES, New York City, N.Y., U.S.A.
	ARCHITECTS	Walker & Poor.
	COMPLETION DATE	Early '50s.
	BUILDING COVERAGE	19.8%.
	NO. OF BUILDINGS	3 fourteen storey blocks, 3 six storey blocks together with 14 seven storey buildings grouped into 8 blocks, totall- ing 14 blocks.
	DENSITY	257 persons/acre.
	DWELLING TYPES	879 three & four room dwelling units.
	CONSTRUCTION	Fire-resistant.

APARTMENT HOUSE PLANS

STRIP TYPE PLAN
 8 Units/Landing
 1 & 2 Bedrooms
 Elevators & Service Stairs

PARKSIDE HOUSES,
 New York City, N.Y.,
 U.S.A.

32



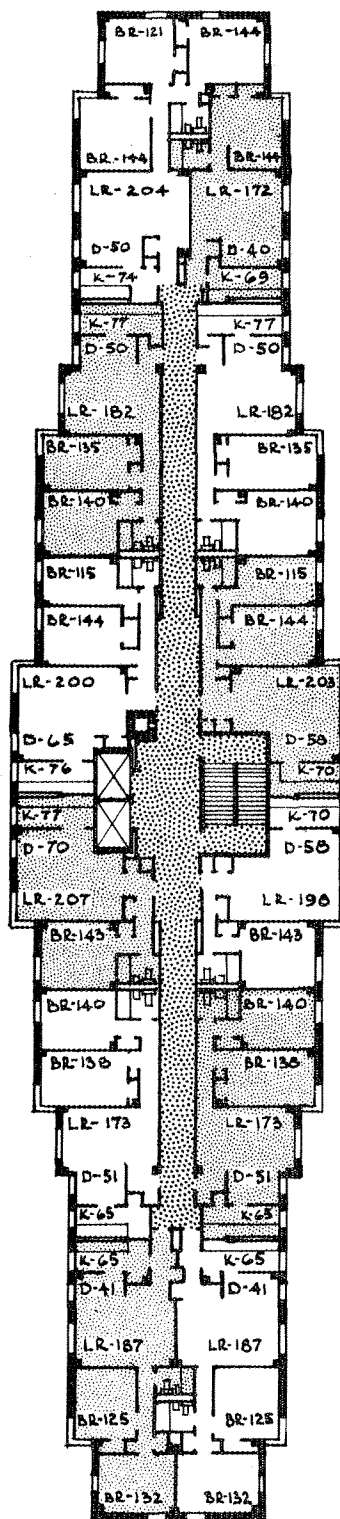
STRIP TYPE PLAN
12 Units/Landing
1, 2 & 3 Bedrooms
Elevators & Service Stairs

A CLASSIFICATION OF

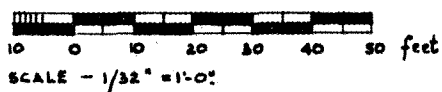
33	PROJECT	DYCKMAN HOUSES, Manhattan, New York City, N. Y., U. S. A.
	ARCHITECTS	William F. R. Ballard.
	COMPLETION DATE	Early '50s.
	PLOT AREA	13.09 net acres, excluding 1 acre park.
	BUILDING COVERAGE	14.12% (net), 13.1% (gross).
	NO. OF BUILDINGS	7 fourteen storey buildings.
	DENSITY	320 persons/acre (net), 290 persons/acre (gross).
	DWELLING TYPES	1167 one, three, four & five room dwelling units.
	CONSTRUCTION	Fire-resistant.
	AMENITIES	Social rooms, laundries, children's center, child health center, playgrounds and parks.
	HEATING	Central heating plant.

STRIP TYPE PLAN
12 Units/Landing
1, 2 & 3 Bedrooms
Elevators & Service Stairs

33



APPROX:
240'



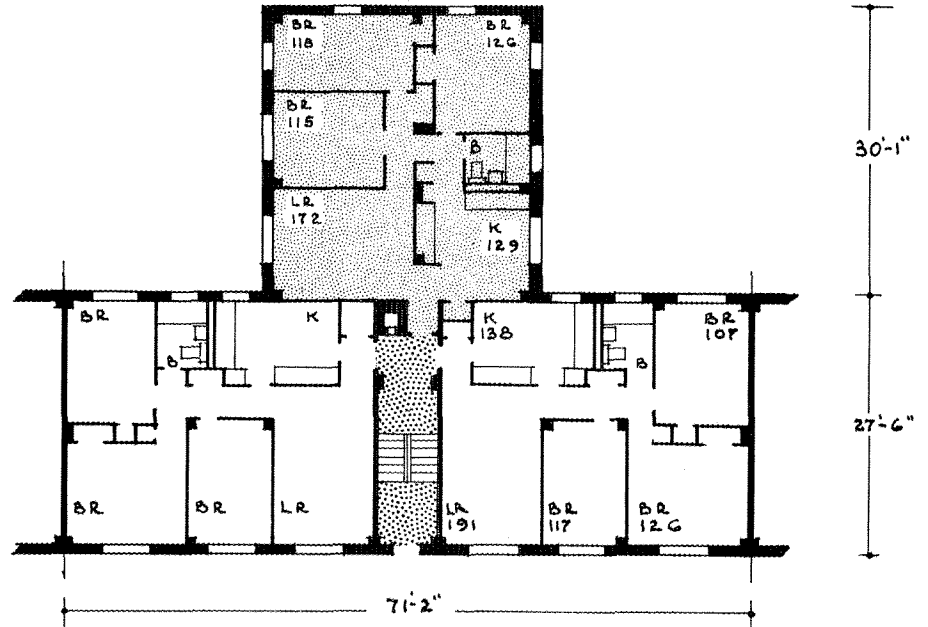
- 34** PROJECT GOWANUS HOUSES,
New York City, N.Y., U.S.A.
ARCHITECTS Candela, Kahn, Jacobs & McCarthy.
PLOT AREA 11.53 net acreage, excluding 1.04 acres
of parks and playgrounds.
BUILDING COVERAGE 21% (net).
NO. OF BUILDINGS 24 four, eight & fourteen storey build-
ings grouped into 16 blocks.
DENSITY 387 persons/acre (net).
DWELLING TYPES 1141 five room dwelling units.
CONSTRUCTION Fire-resistant.
AMENITIES Parks and playgrounds.
COST \$6.738 million (Total development cost).
- 35** PROJECT Apartments at Whitton, Middlesex,
England.
ARCHITECTS Eric Lyons & G. Paulson Townsend.
NO. OF BUILDINGS 4 two storey buildings containing 6 dwell-
ing units each.
DWELLING TYPES 24 four & five room dwelling units.
CONSTRUCTION Foundation - concrete slab; exterior walls -
brick & rendered brick.
AMENITIES Storage space & drying yards.
COST Contract price \$100,000 approximately.

APARTMENT HOUSE PLANS

T TYPE PLAN
3 Units/Landing
2 & 3 Bedrooms

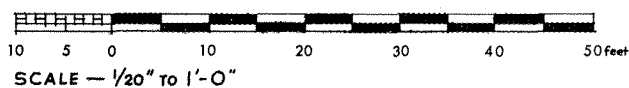
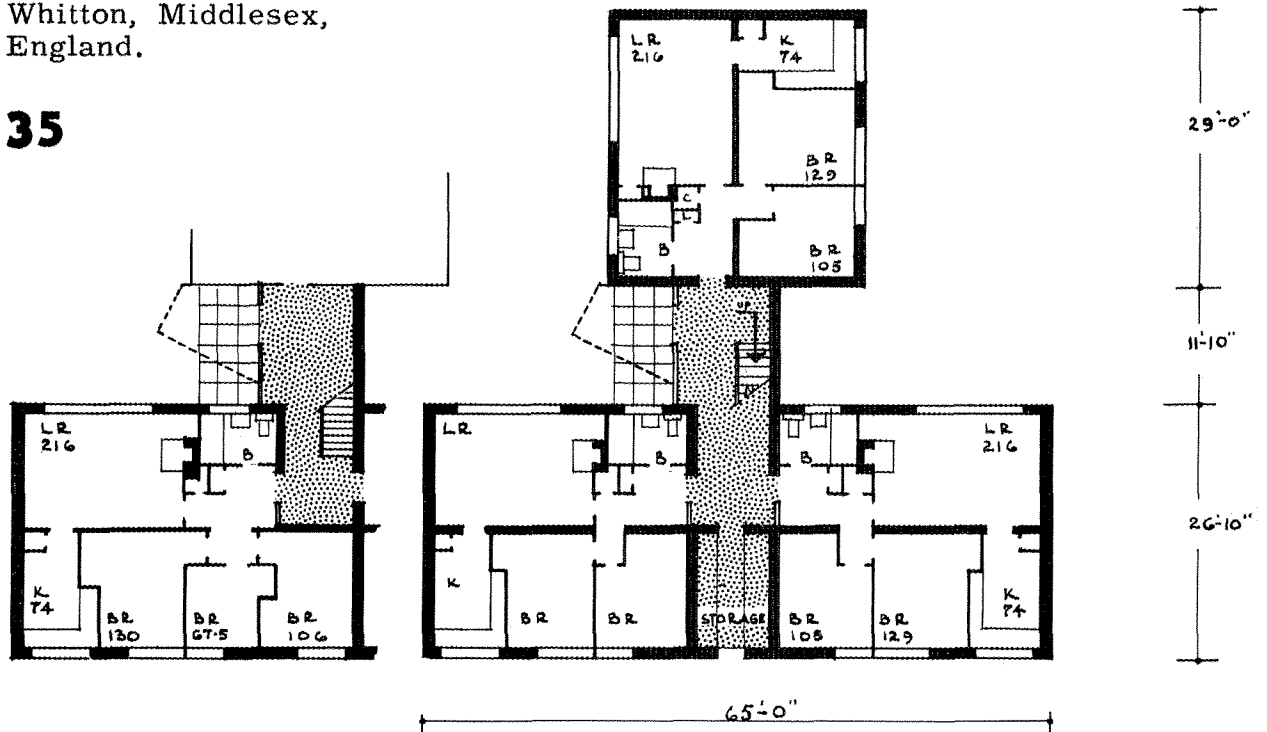
GOWANUS HOUSES,
Brooklyn, N. Y. C.
N. Y., U. S. A.

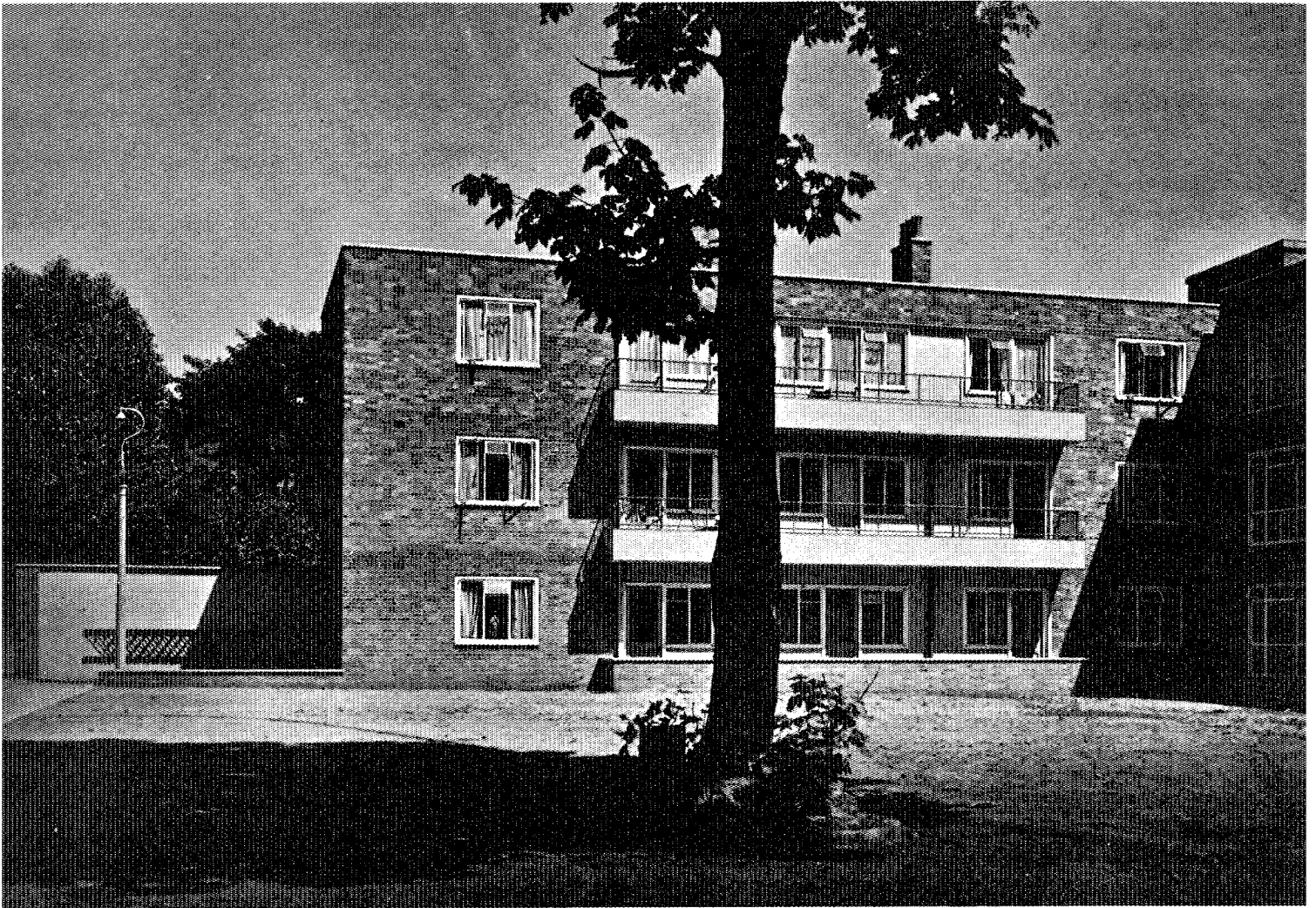
34



Whitton, Middlesex,
England.

35





SOMERFORD GROVE ESTATE, Hackney, London, England.
Architect, Frederick Gibberd.

Credit, Architectural Review, September, 1949, page 149.

T TYPE PLAN
9 Units/Landing
1, 2 & 3 Bedrooms
Elevators & Service Stairs

A CLASSIFICATION OF

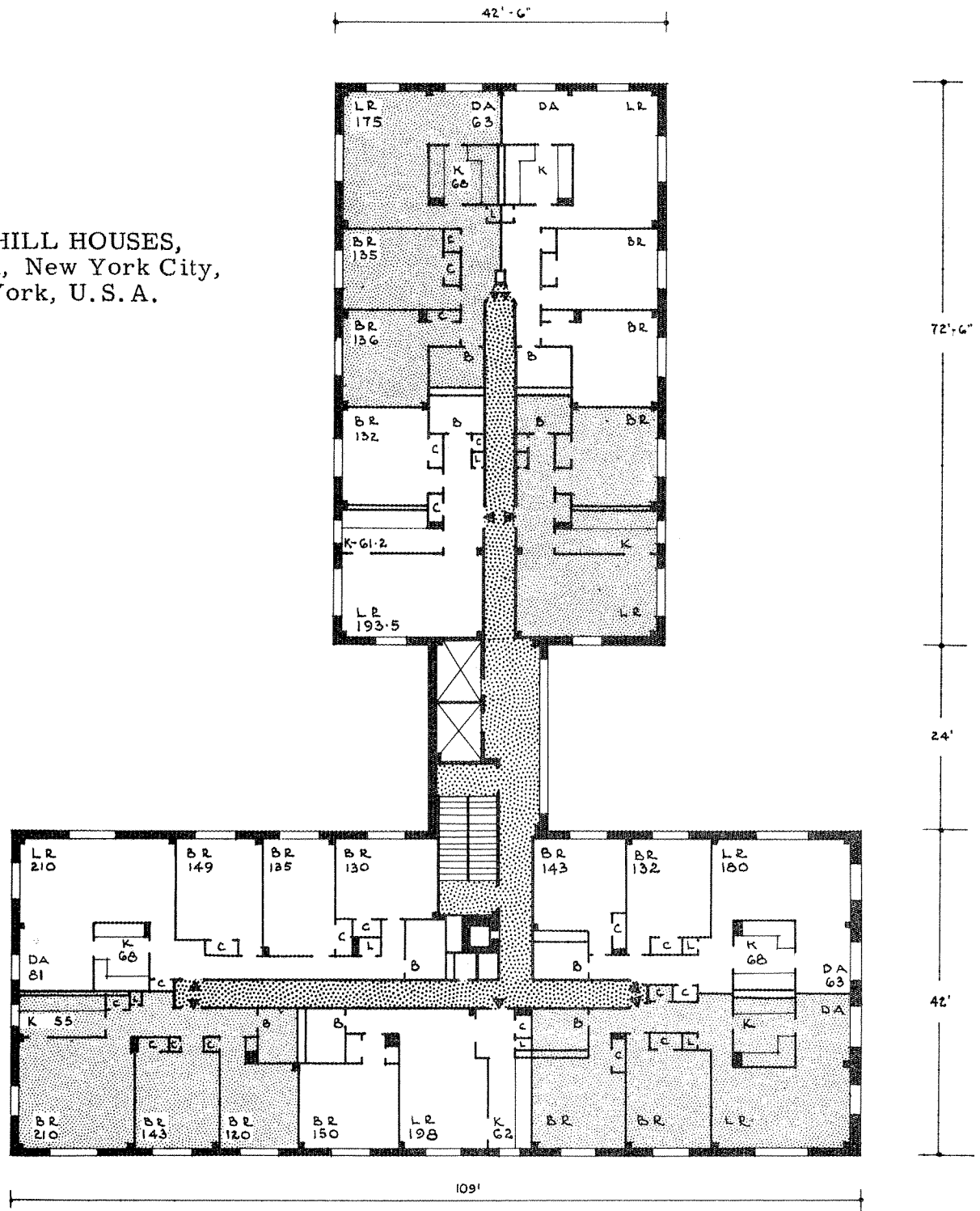
36	PROJECT	GUN HILL HOUSES, Bronx, New York City, N. Y., U.S. A.
	ARCHITECTS	Alfred Hopkins and Associates.
	COMPLETION DATE	Early '50s.
	PLOT AREA	7.21 net acres excluding .72 acre play-ground.
	BUILDING COVERAGE	17.35% (net), 15.84% (gross).
	NO. OF BUILDINGS	5 fourteen & 1 thirteen storey buildings.
	DENSITY	348 persons/acre (net), 317 persons/acre (gross).
	DWELLING TYPES	733 three, four and five room dwelling units.
	CONSTRUCTION	Reinforced concrete, faced with red brick.
	AMENITIES	Laundry, children's health station, children's centre, craftrooms, parks and playgrounds.
	COST	\$6.840 million (approximate).

APARTMENT HOUSE PLANS

T TYPE PLAN
9 Units/Landing
1, 2 & 3 Bedrooms
Elevators and Service Stairs

GUN HILL HOUSES,
Bronx, New York City,
New York, U.S.A.

36



Z TYPE PLAN
4 Units/Landing
1 Bedroom

A CLASSIFICATION OF

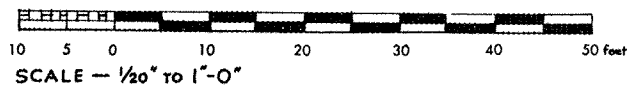
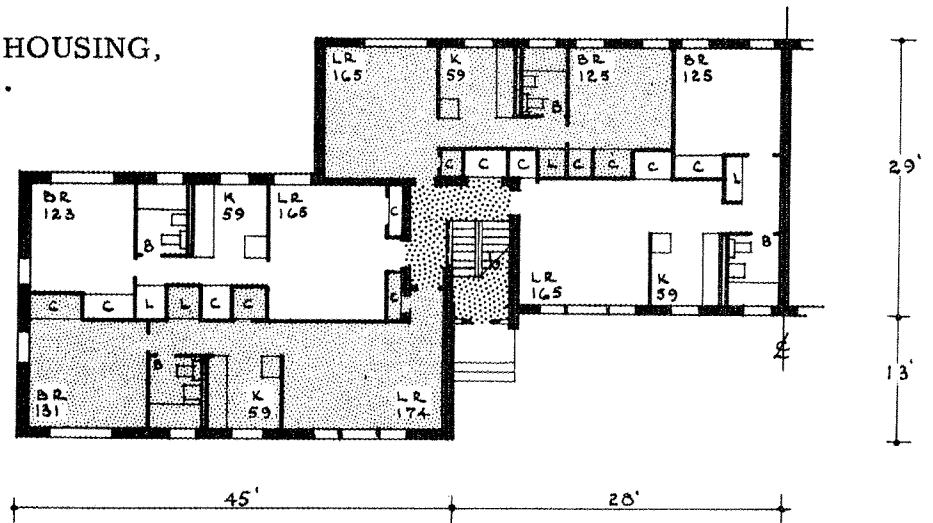
37	PROJECT	RIVERSIDE TERRACE HOUSING, Paterson, New Jersey, U.S.A.
	ARCHITECTS	Stephen Kelly and Sumner Gruzen.
	COMPLETION DATE	1944.
	PLOT AREA	18.7 acre (approximate gross acreage) sloping site.
	NO. OF BUILDINGS	7 three storey (plus basement) buildings.
	DWELLING TYPES	224 three room dwelling units.
	CONSTRUCTION	Brick and concrete block.
	AMENITIES	Playfield, children's playground, parking areas, drying yards and community centre building.

APARTMENT HOUSE PLANS

Z TYPE PLAN
4 Units/Landing
1 Bedroom

RIVERSIDE TERRACE HOUSING,
Paterson, N. J., U. S. A.

37



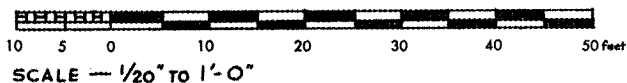
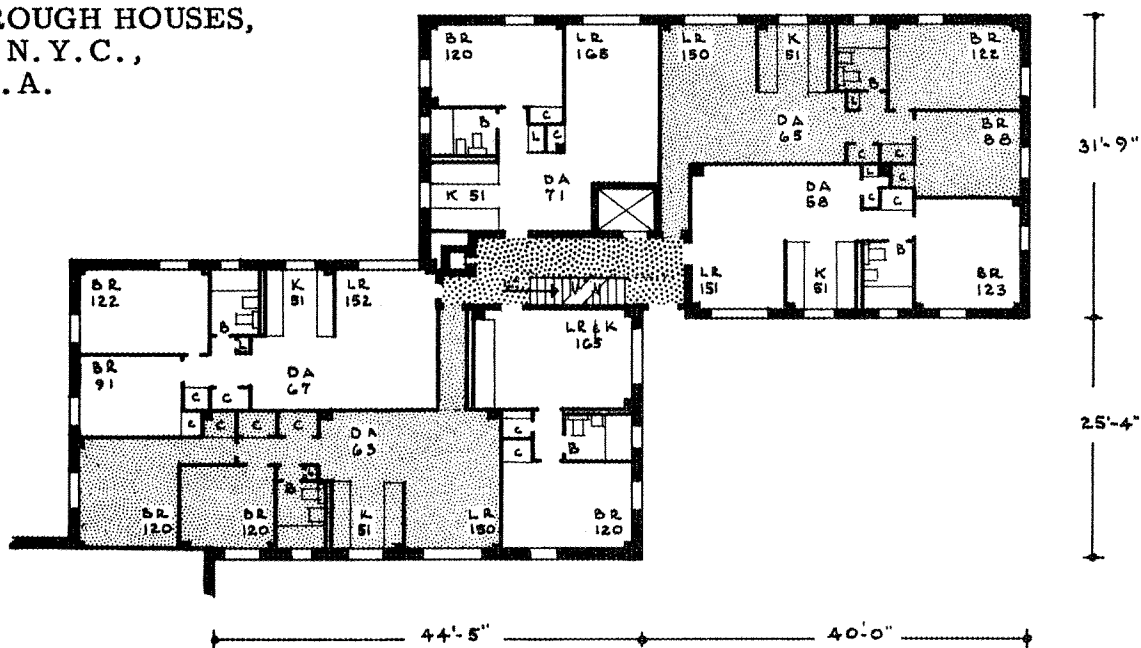
Z TYPE PLAN
6 Units/Landing
1 & 2 Bedrooms
Elevator

A CLASSIFICATION OF

38	PROJECT	KINGSBOROUGH HOUSES, Brooklyn, New York City, N.Y., U.S.A.
	ARCHITECTS	Skidmore and Owings; Slee and Bryson, Starrett and Van Vleck.
	COMPLETION DATE	October, 1941.
	PLOT AREA	15.28 acres (net), excluding .69 acres of parks and playgrounds.
	BUILDING COVERAGE	19% (net), 18.75% (gross).
	NO. OF BUILDINGS	35 six storey buildings grouped into 16 blocks.
	DENSITY	205 persons/acre (net), 196 persons/ acre (gross).
	DWELLING TYPES	1166 two, three, four and five room dwelling units.
	CONSTRUCTION	Fire-resistant.
	AMENITIES	Playgrounds, parks, health centre and nursery.
	COST	\$5.175 million (Total development cost).

Z TYPE PLAN
6 Units/Landing
1 & 2 Bedrooms
Elevator

38



L TYPE PLAN
3 Units/Landing
1 Bedroom

A CLASSIFICATION OF

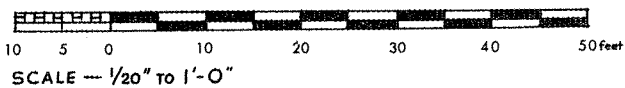
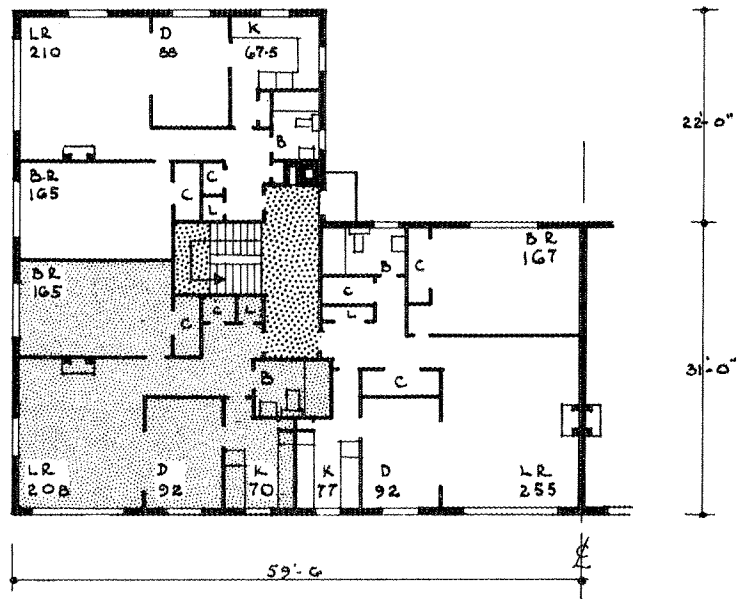
39	PROJECT	THE HAINAULT, Vancouver, British Columbia.
	ARCHITECT	Harold Cullerne.
	COMPLETION DATE	1947.
	SITE	City Lot.
	NO. OF BUILDINGS	2 three storey buildings grouped into 1 block.
	DWELLING TYPES	12 four room dwellings.

APARTMENT HOUSE PLANS

L TYPE PLAN
3 Units/Landing
1 Bedroom

THE HAINAULT,
Vancouver, B.C.,
Canada.

39



Y TYPE PLAN
3 Units/Landing
1 Bedroom

A CLASSIFICATION OF

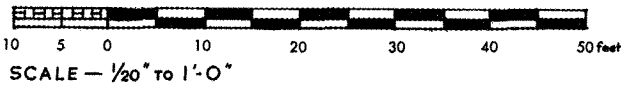
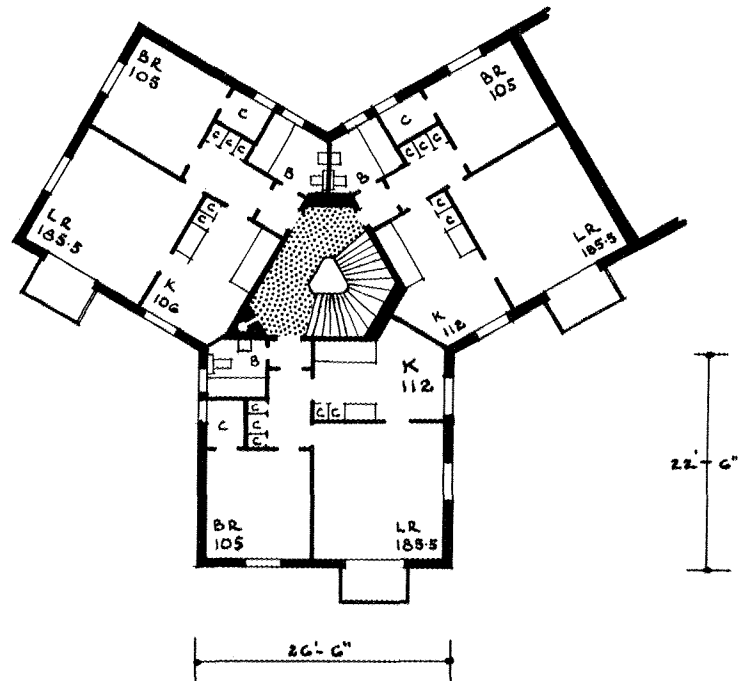
40	PROJECT	NYA SMALHUS, Grondal, Stockholm, Sweden.
	ARCHITECTS	Backstrom & Reinius.
	COMPLETION DATE	1946.
	NO. OF BUILDINGS	24 three storey buildings, 18 of which are grouped in one super block.
	DWELLING TYPES	216 three and five room dwelling units.
	CONSTRUCTION	Colour-washed rendered exterior walls of 10" concrete blocks.
	AMENITIES	Shops and landscaped terrace garden.

APARTMENT HOUSE PLANS

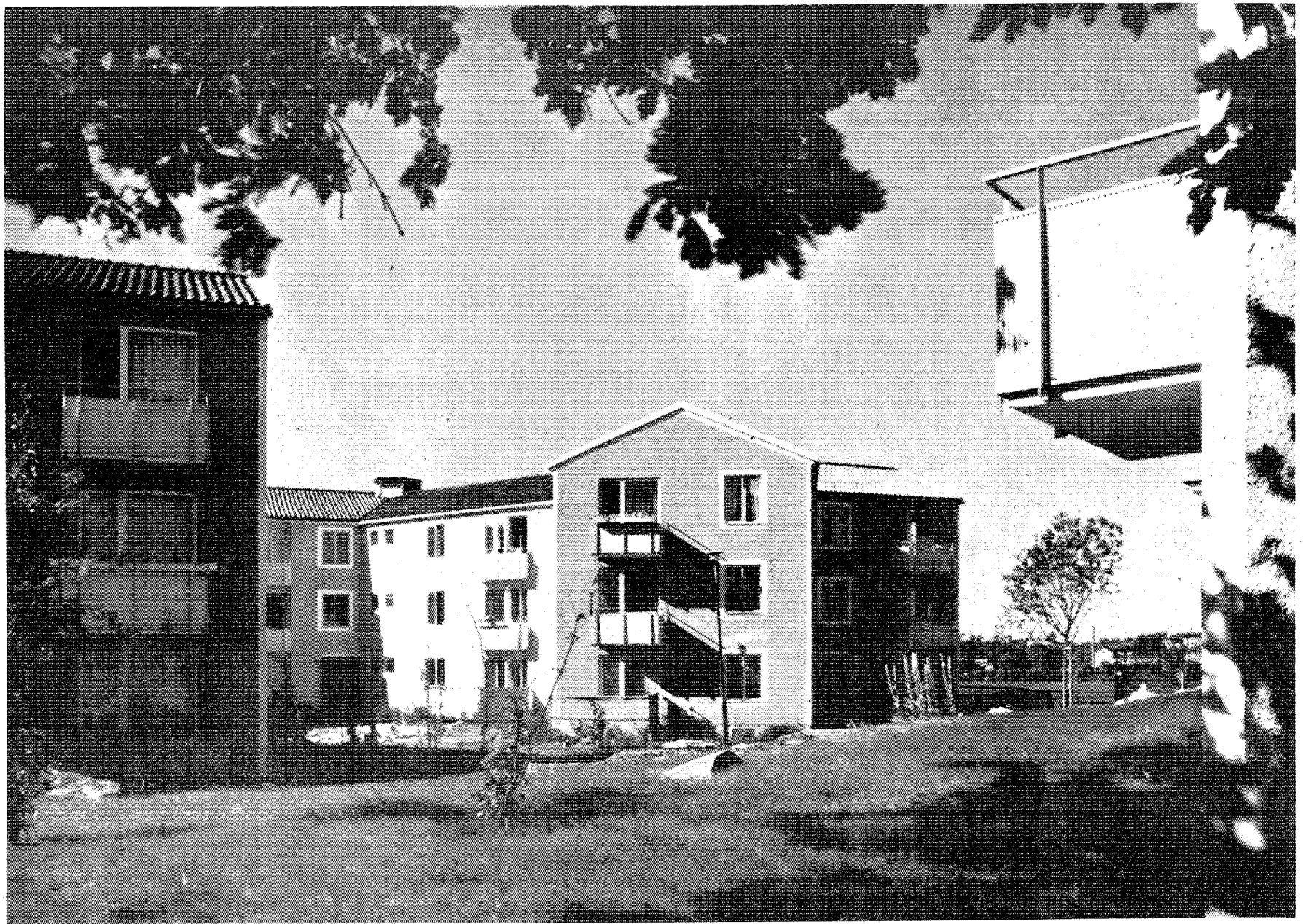
Y TYPE PLAN
3 Units/Landing
1 Bedroom

NYA SMALHUS,
Grondal, Stockholm,
Sweden.

40



Credit, Architectural Review, June, 1948, page 248.



NYA SMALHUS, Grondal, Stockholm, Sweden.
Architects, Backstrom & Reinius.

Y TYPE PLAN

5 Units/Landing

Bed-Sitting, 2 & 3 Bedrooms

Elevator, skip stop type

A CLASSIFICATION OF

41	PROJECT	QUEENSBRIDGE, Queens, New York City, N.Y., U.S.A.
	ARCHITECTS	Wm. F. Ballard.(Assoc. Churchill, Frost, Turner.)
	COMPLETION DATE	1940.
	PLOT AREA	34.67 acres, excluding 14.8 acres of parks and playgrounds.
	BUILDING COVERAGE	26%.
	NO. OF BUILDINGS	96 six storey buildings arranged in 26 blocks.
	DENSITY	245 persons/acre (net).
	DWELLING TYPES	3,149 two, three, four and five room dwelling units.
	CONSTRUCTION	12" solid brick and brick and hollow tile walls; reinforced concrete floors and roofs.
	AMENITIES	Community amenities, shops and nursery school.
	COST	\$13.219 million total development cost.

APARTMENT HOUSE PLANS

Y TYPE PLAN

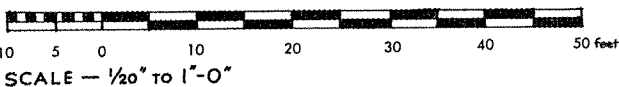
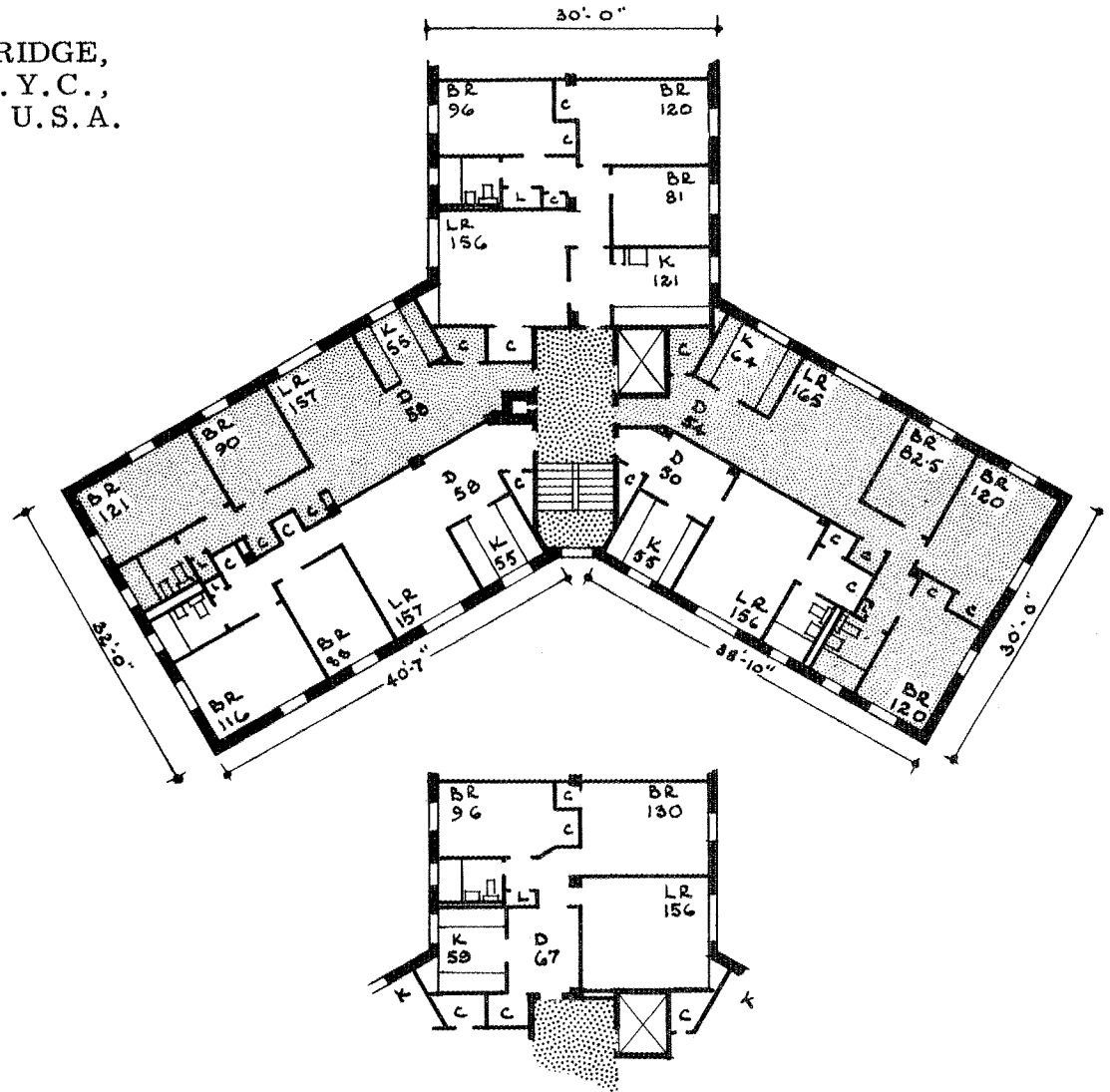
5 Units/Landing

Bed-Sitting, 2 & 3 Bedrooms

Elevator, skip stop type

QUEENSBRIDGE,
Queens, N.Y.C.,
New York, U.S.A.

41



42

PROJECT

HILLCREST HOUSING,

North Hill, Hornsey, London, U.K.

T.P. Bennett and Sons.

ARCHITECTS

1949.

COMPLETION DATE

PLOT AREA

5.5 acres.

NO. OF BUILDINGS

7 four and seven storey buildings.

DENSITY

77 persons/acre.

DWELLING TYPES

166 three, four and five room dwelling units.

CONSTRUCTION

Brick on steel frame construction.

AMENITIES

Balconies, community centre.

APARTMENT HOUSE PLANS

OFF-SET CROSS TYPE PLAN

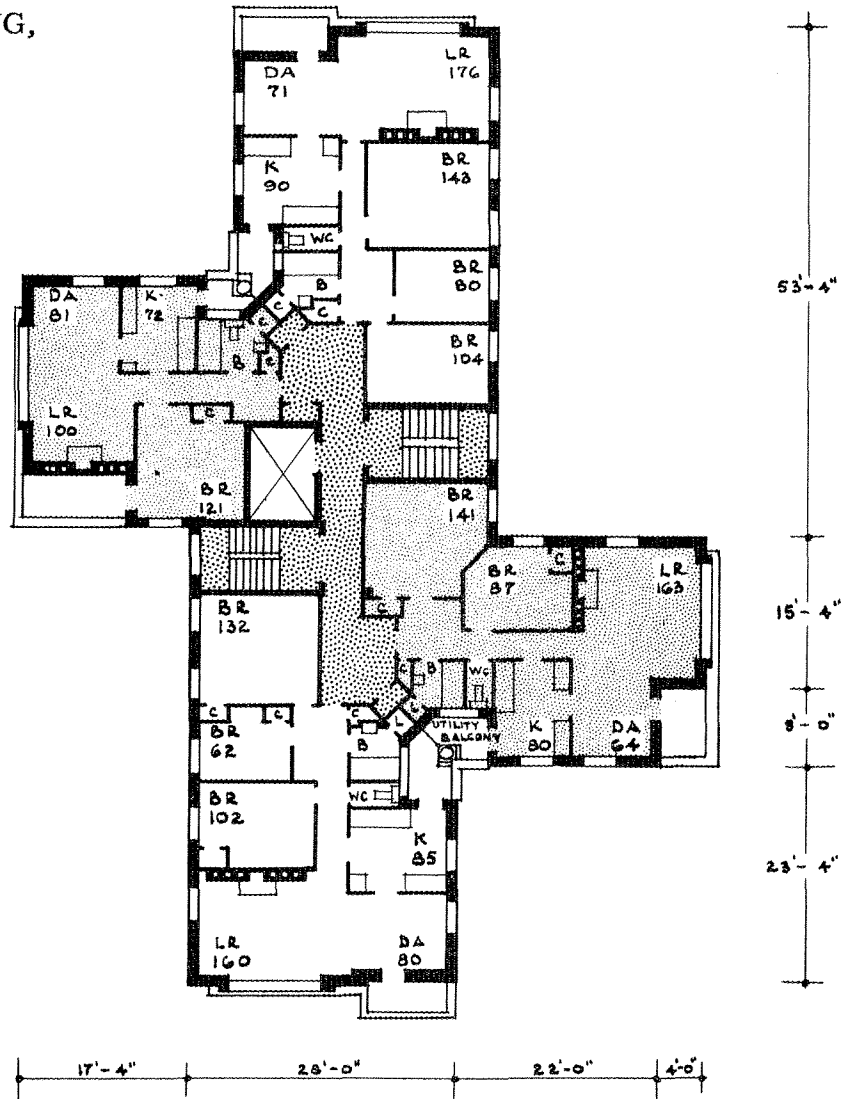
4 Units/Landing

1, 2 & 3 Bedrooms

Elevators & Service Stairs

HILLCREST HOUSING,
North Hill, London,
England.

42



SCALE — $\frac{1}{20}''$ TO $1'-0''$

OFF-SET CROSS TYPE PLAN

4 Units/Landing
1,2&3 Bedrooms
Elevator

A CLASSIFICATION OF

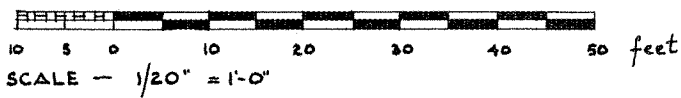
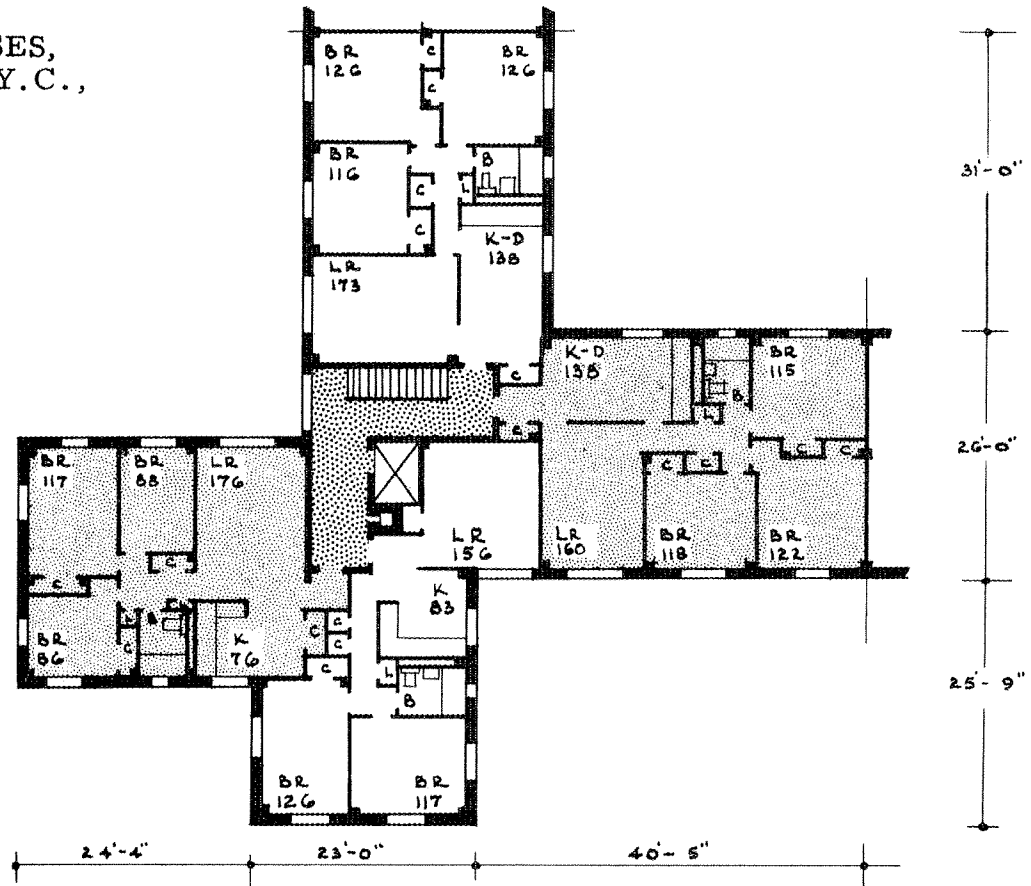
43	PROJECT	MARCY HOUSES, Brooklyn, New York City, N.Y., U.S.A.
	ARCHITECTS	Voorhees, Walker, Foley and Smith.
	COMPLETION DATE	1948.
	PLOT AREA	Covering two city blocks and comprising 28.49 acres, including 3.2 acre playground.
	BUILDING COVERAGE	19.36%.
	NO. OF BUILDINGS	70 six storey elevator buildings grouped into 27 blocks.
	DENSITY	239.84 persons/acre.
	DWELLING TYPES	3, 4, and 5 room dwelling units.
	CONSTRUCTION	Fire-resistant.
	AMENITIES	Nursery, library, playground and parks.
	COST	Approximately \$11 million.

APARTMENT HOUSE PLANS

OFF-SET CROSS TYPE PLAN
4 Units/Landing
1, 2 & 3 Bedrooms
Elevator

MARCY HOUSES,
Brooklyn, N. Y. C.,
N. Y., U. S. A.

43



CROSS TYPE PLAN

8 Units/Landing

1&2 Bedrooms

Elevator & Service Stairs

A CLASSIFICATION OF

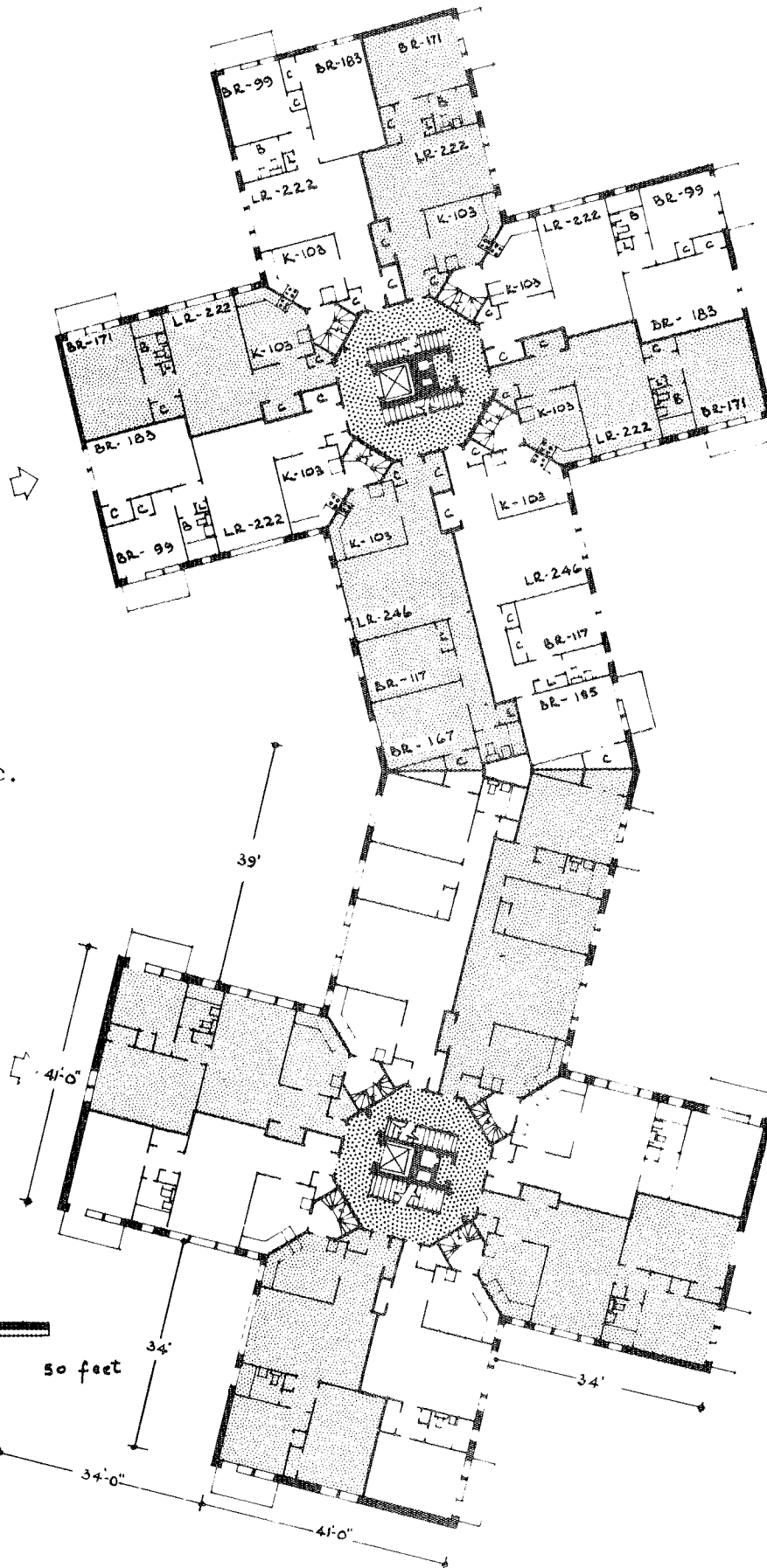
44

PROJECT
ARCHITECT
NO. OF BUILDINGS
DWELLING TYPES

Ridgewood Road, Montreal, Quebec.
Henry E. Greenspoon.
2 five storey buildings.
66 three and four room dwelling units.

APARTMENT HOUSE PLANS

CROSS TYPE PLAN
8 Units/Landing
1 & 2 Bedrooms
Elevator & Service Stairs



Apartments on
Ridgewood Road,
Montreal, Quebec.

44

CROSS TYPE PLAN

8 Units/Landing

Bed-Sitting, 1,2 & 3 Bedrooms

Elevators & Service Stairs

A CLASSIFICATION OF

45

PROJECT

EAST RIVER HOUSES,

Manhattan, New York City, N.Y., U.S.A.

ARCHITECTS

Voorhees, Walker, Foley and Smith.

COMPLETION DATE

1941.

PLOT AREA

10.71 net acres, excluding 1.06 acres of parks and playgrounds.

BUILDING COVERAGE

24%.

NO. OF BUILDINGS

29 six, ten and eleven storey buildings grouped into 10 blocks.

DENSITY

354 persons per acre (net).

DWELLING TYPES

1170 two, three, four and five room dwelling units.

CONSTRUCTION

Fire-resistant.

AMENITIES

Park, child health centre and children's playground.

COST

Total development cost \$5.304 million.

APARTMENT HOUSE PLANS

CROSS TYPE PLAN

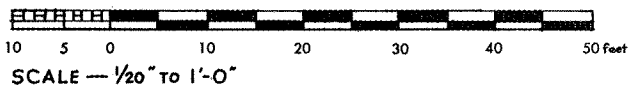
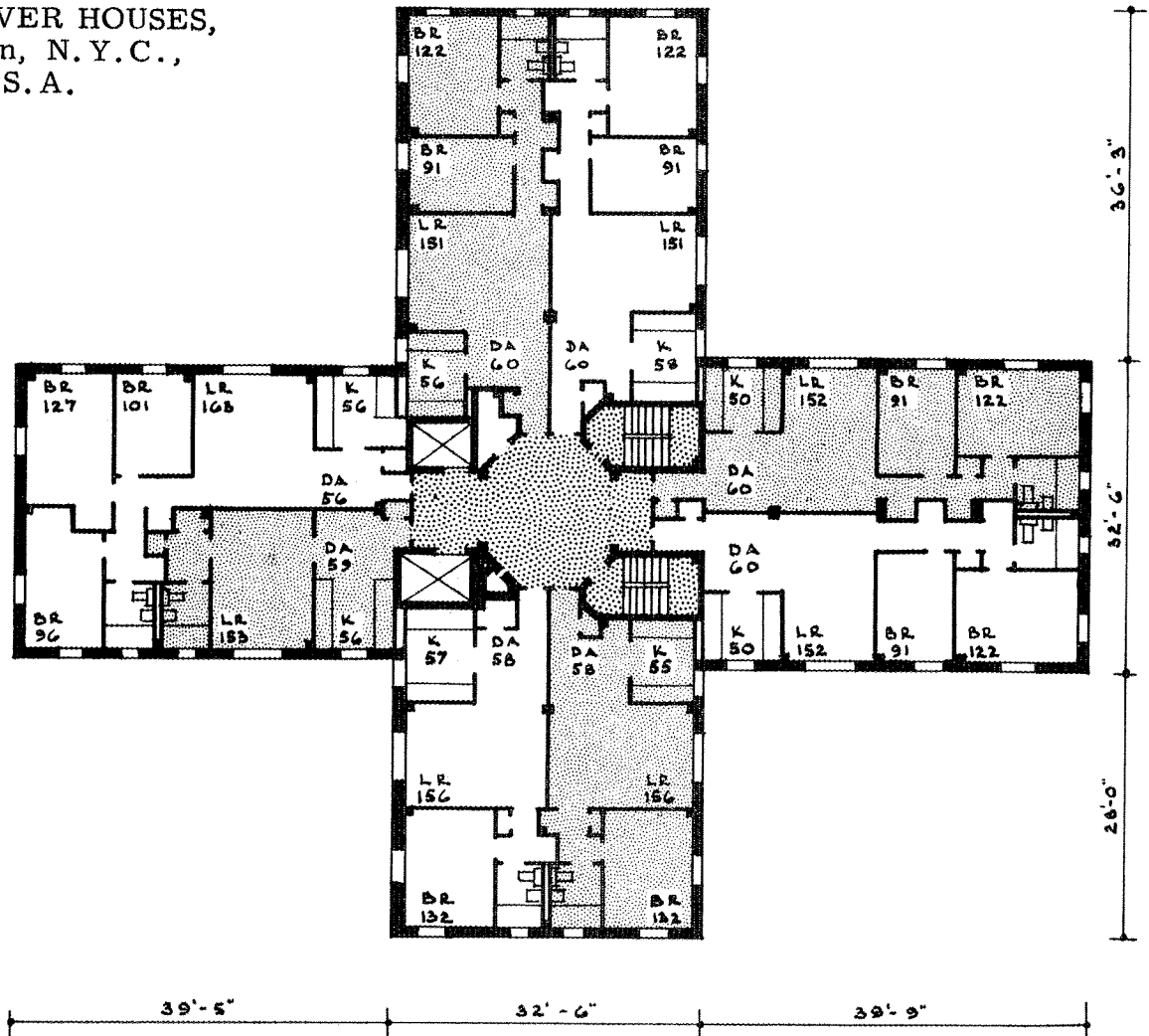
8 Units/Landing

Bed-Sitting, 1, 2 & 3 Bedrooms

Elevators & Service Stairs

EAST RIVER HOUSES,
Manhattan, N. Y. C.,
N. Y., U. S. A.

45



CROSS TYPE PLAN
8 Units/Landing
2 Bedrooms
Elevators & Service Stairs

A CLASSIFICATION OF

46	PROJECT	MORRISANIA HOUSES, Bronx, New York City, N.Y., U.S.A.
	ARCHITECTS	J.F. Delaney, J.W. O'Connor, A. Embury II, E.M.W. Del Gaudio.
	PLOT AREA	16.05 net acres, excluding 1.13 acres of parks and playgrounds.
	BUILDING COVERAGE	23%.
	NO. OF BUILDINGS	25 buildings grouped into 15 six and thirteen storey blocks.
	DENSITY	435 persons/acre (net).
	DWELLING TYPES	1791 two, four and five room dwelling units.
	CONSTRUCTION	Fire-resistant.
	AMENITIES	Nursery and play areas and parking.
	COST	Total development cost \$10.849 million.

APARTMENT HOUSE PLANS

CROSS TYPE PLAN

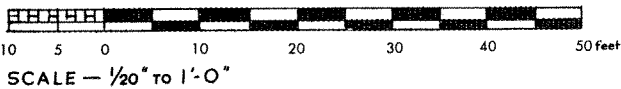
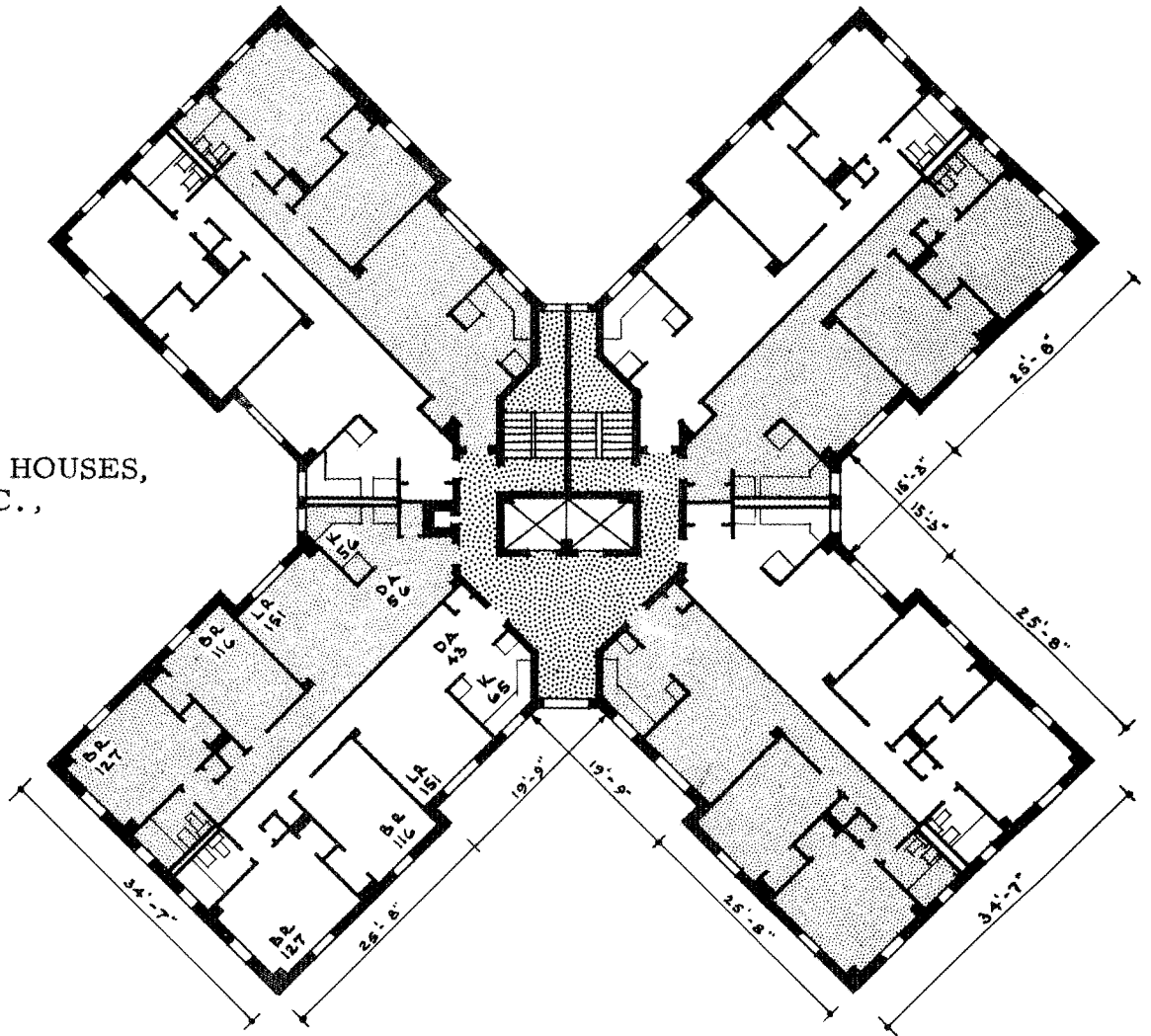
8 Units/Landing

2 Bedrooms

Elevators and & Service Stairs

MORRISANIA HOUSES,
Bronx, N.Y.C.,
N.Y., U.S.A.

46



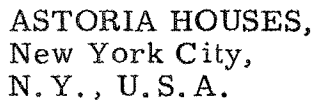
CROSS TYPE PLAN
8 Units/Landing
2&3 Bedrooms
Elevator & Service Stairs

A CLASSIFICATION OF

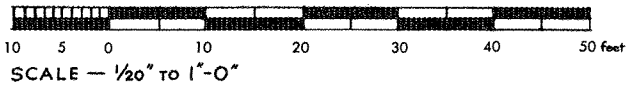
47	PROJECT	ASTORIA HOUSES, New York City, N.Y., U.S.A.
	ARCHITECTS	Harrison & Abramovitz.
	COMPLETION DATE	Early '50s.
	PLOT AREA	26.79 net acres, excluding 4.35 acre playground.
	BUILDING COVERAGE	14.85% (net).
	NO. OF BUILDINGS	22 six storey buildings.
	DENSITY	182.7 persons/acre (net).
	DWELLING TYPES	1104 four, five and six room dwelling units.
	CONSTRUCTION	Fire-resistant.
	AMENITIES	Social, craft, class & ceramics rooms, laundries, children's center, parks and playground.

APARTMENT HOUSE PLANS

CROSS TYPE PLAN
8 Units/Landing
2 & 3 Bedrooms
Elevator & Service Stairs



47



PENTAGONAL TYPE PLAN

10 Units/Landing

2 & 3 Bedrooms

Elevators & Service Stairs

A CLASSIFICATION OF

48

PROJECT

FARRAGUT HOUSES,

New York City, N.Y., U.S.A.

ARCHITECTS

Fellheimer, Vagner & Vollmer.

COMPLETION DATE

Early '50s.

PLOT AREA

Extending over 3 city blocks and comprising 17.29 acres (net) but excluding a .62 acre playground.

BUILDING COVERAGE

12.6% (gross).

NO. OF BUILDINGS

10 fourteen storey pentagon shaped buildings.

DENSITY

297.84 persons/acre (gross).

DWELLING TYPES

1400 two, three, four & five room dwelling units.

CONSTRUCTION

Fire-resistant.

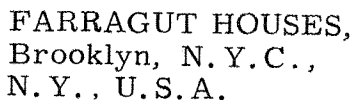
AMENITIES

Community building, playground, child health center, craft rooms and laundry.

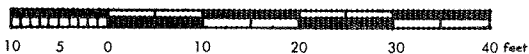
APARTMENT HOUSE PLANS

10 Units/Landing

Elevators & Service Stairs



48



SQUARE TYPE PLAN
2,4 & 5 Units/Landing
0,1,3,4 & 5 Bedrooms
Elevators & Stairs

A CLASSIFICATION OF

49

PROJECT

DANVIKSLIPPAN 'POINT' HOUSES,
Stockholm, Sweden.

ARCHITECTS

Backstrom & Reinius.

COMPLETION DATE

1946.

SITE

The site is a very rocky promontory.

NO. OF BUILDINGS

9 buildings arranged in a rough oval and
varying in height from 8 to 10 storeys.

DWELLING TYPES

391 one to six room dwelling units.

CONSTRUCTION

Reinforced concrete. All the buildings
have rendered exteriors, which are co-
lour-washed, each one a difference pas-
tel colour.

AMENITIES

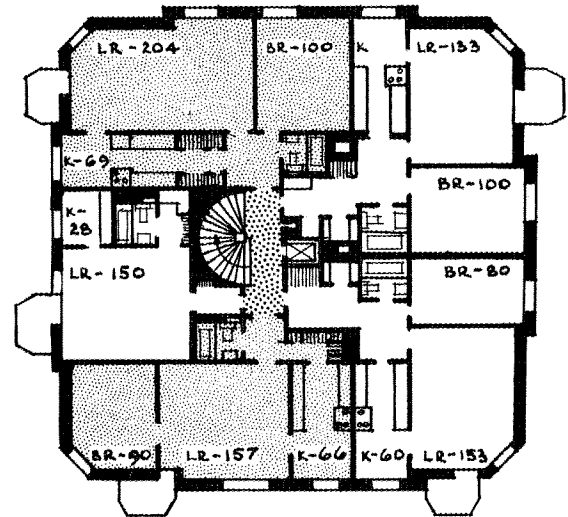
Each building contains a day nursery, a
post office and some small shops. There
are bigger shops and transportation faci-
lities available in the centre of the group
of buildings.

APARTMENT HOUSE PLANS

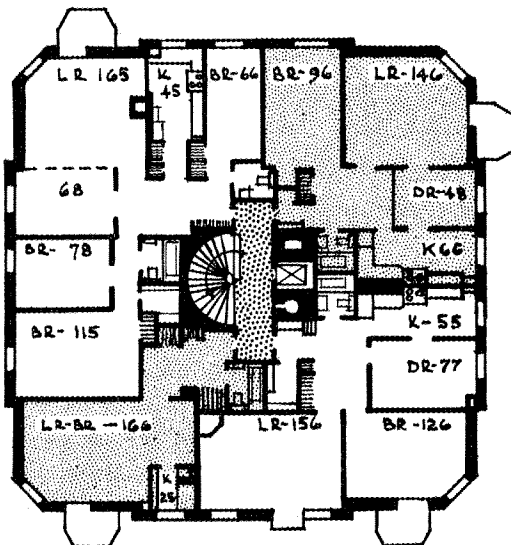
SQUARE TYPE PLAN
2,4 & 5 Units/Landing
0,1,3,4 & 5 Bedrooms
Elevators & Stairs

DANVIKSLIPPAN,
Stockholm,
Sweden.

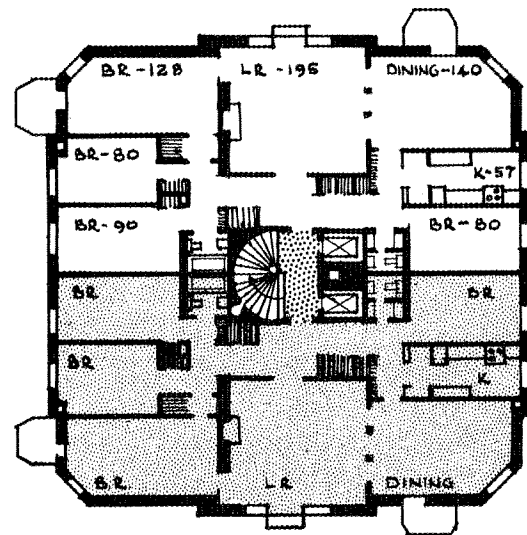
49



TYPE A — TOP FLOOR



TYPE B — TYPICAL FLOOR



TYPE A — TYPICAL FLOOR

50'

10 5 0 10 20 30 40 feet
SCALE — 1/20" TO 1'-0"

Credit, The Modern Flat, by F.R.S. Yorke & F. Gibberd, page 167.



REIMERSHOLME, Stockholm, Sweden.

Architects, H.S.B., the Swedish Co-operative of Householders
Savings and Building Organizations.

SQUARE TYPE PLAN
3 Units/Landing
1&2 Bedrooms
Exterior Service Stairs

A CLASSIFICATION OF

50 EXAMPLE OF

Four storey apartments, commonly known as 'cold flats' and typical of the Montreal area.

APARTMENT HOUSE PLANS

SQUARE TYPE PLAN

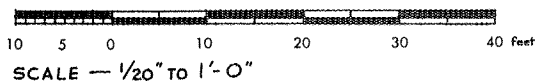
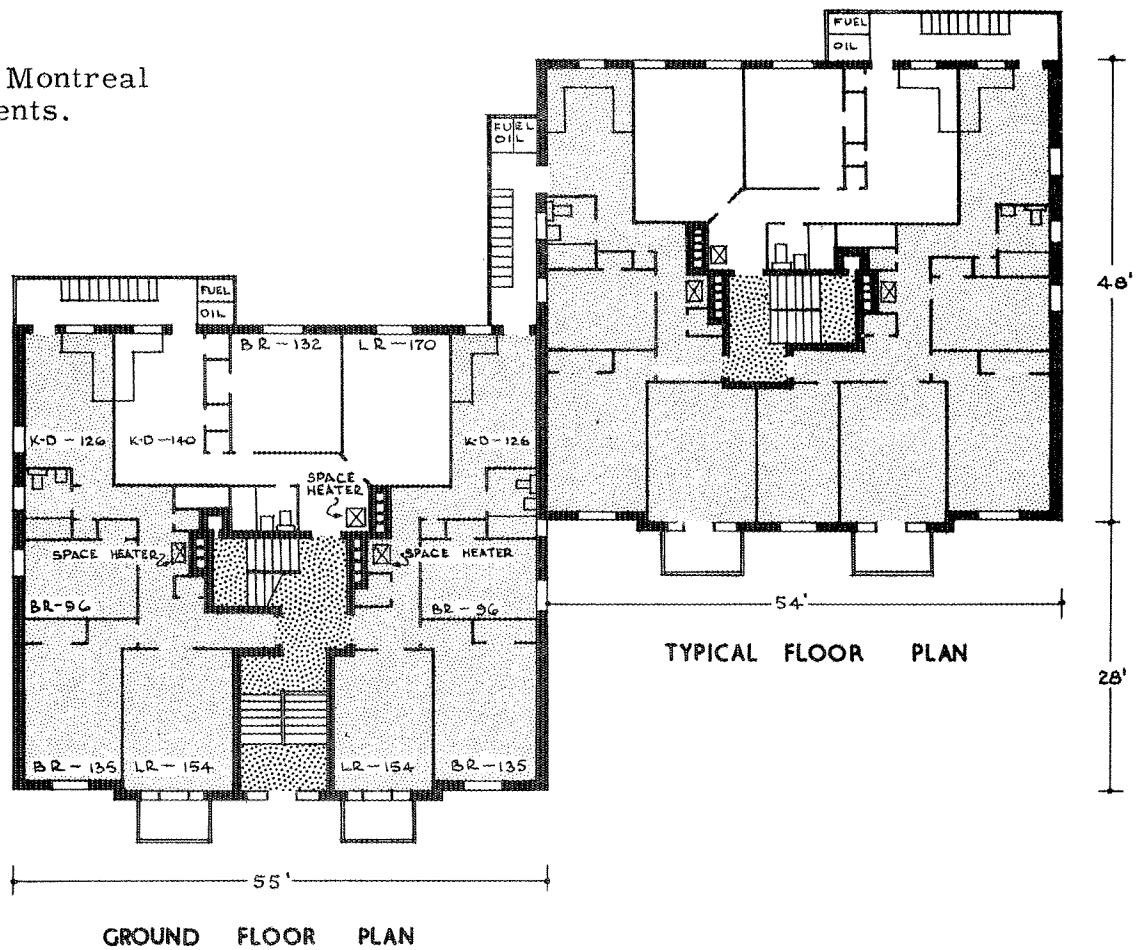
3 Units/Landing

1 & 2 Bedrooms

Exterior Service Stairs

Typical Montreal
Apartments.

50



SQUARE TYPE PLAN
8 Units/Landing
1. & 2 Bedrooms
Elevators & Service Stairs

A CLASSIFICATION OF

51 PROJECT

ARCHITECTS
COMPLETION DATE
PLOT AREA

BUILDING COVERAGE
NO. OF BUILDINGS

DENSITY
DWELLING TYPES
CONSTRUCTION

FORDHAM HILL APARTMENTS,
New York City, N.Y., U.S.A.
Leonard Schultze & Associates.
1950.

Located on the top of a hill in the Bronx
district: the site occupies approximately
7.5 acres.

Approximately 27.5% (gross).

9 sixteen storey building grouped in a
rough oval pattern.

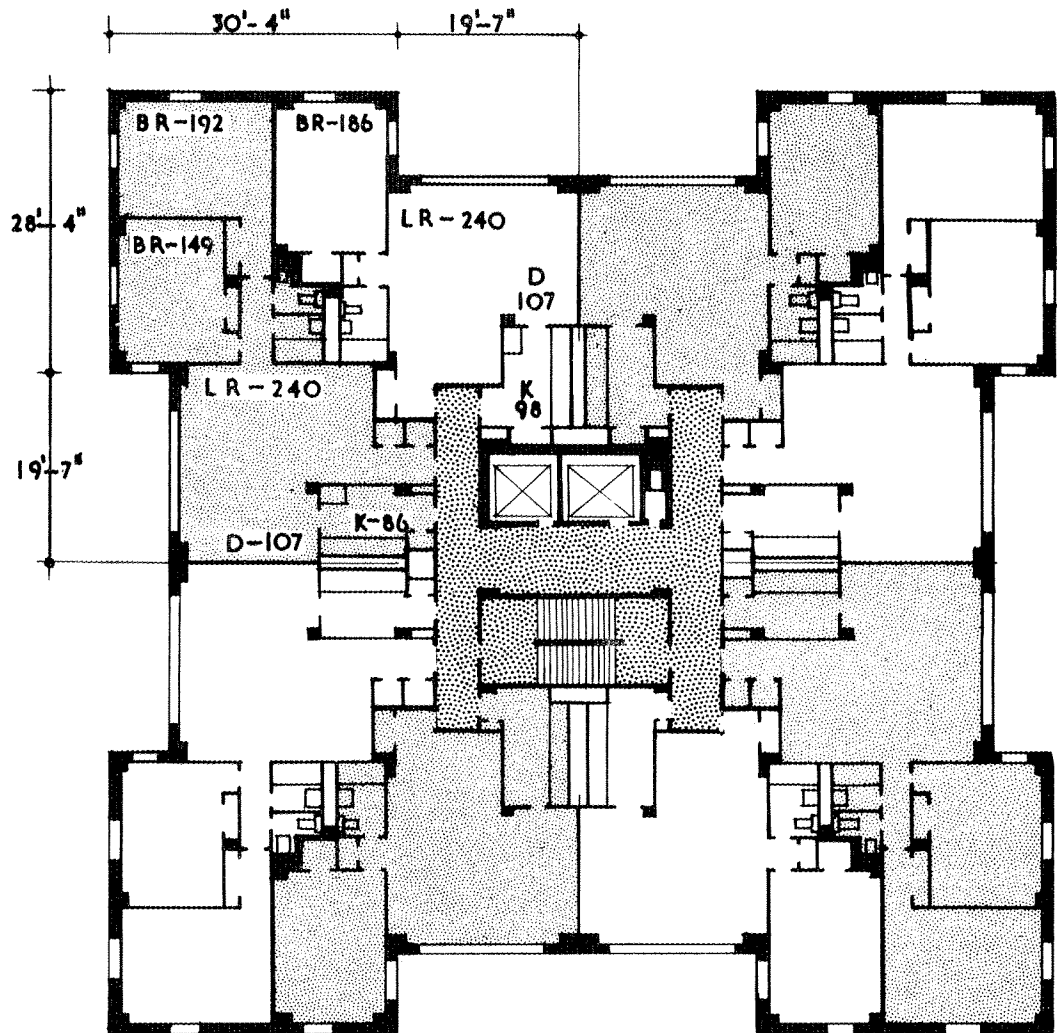
Approximately 149 families/acre(gross).

1118 one and two bedroom dwelling units.

Fire resistant buildings with cream co-
loured brick exteriors.

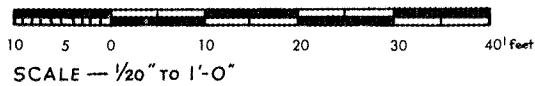
APARTMENT HOUSE PLANS

SQUARE TYPE PLAN
 8 Units/Landing
 1 & 2 Bedrooms
 Elevators & Service Stairs



FORDHAM HILL,
 Bronx, New York City,
 N. Y., U. S. A.

51



BALCONY ACCESS,
STRIP TYPE PLAN
5 Units/Access Balcony
3 Bedrooms
Elevators & Service Stairs

A CLASSIFICATION OF

52 PROJECT

ARCHITECTS
COMPLETION DATE
SITE

NO. OF BUILDINGS
DWELLING TYPES
CONSTRUCTION

DOMBEY STREET APARTMENTS,
Holborn, London, England.
Robert Hening & Anthony Chitty.
1948.

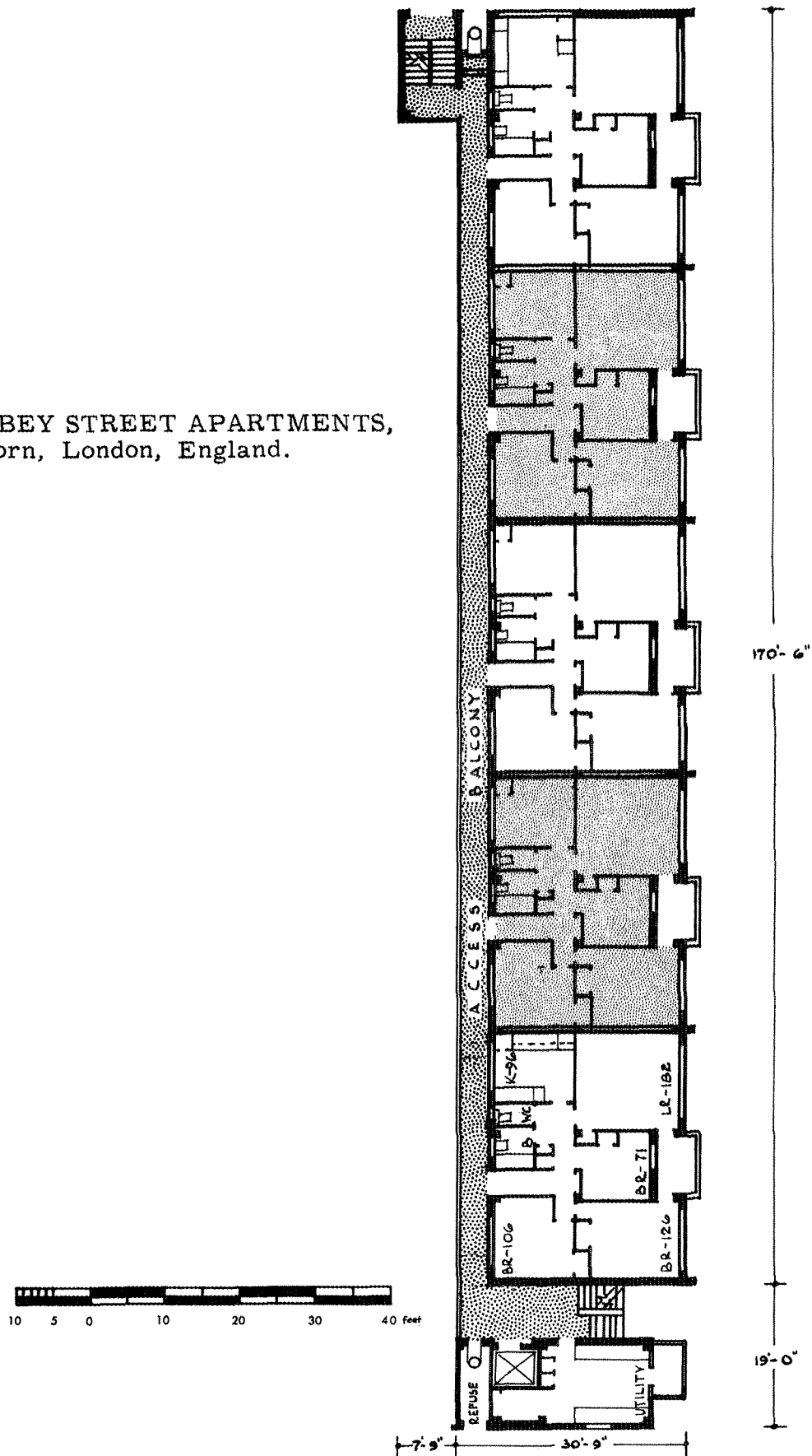
This building is one of several in a scheme in the Great Ormond Street area in the Borough of Holborn, where it is planned to accommodate some 4,000 persons. An 11 storey building (including basement). 50 five room dwelling units. Reinforced concrete frame, spandrils bricked in.

APARTMENT HOUSE PLANS

STRIP TYPE PLAN
5 Units/Access Balcony
3 Bedrooms
Elevators & Service Stairs

DOMBEY STREET APARTMENTS,
Holborn, London, England.

52





ST PANCRAS WAY. St Pancras, London, England.
Architects, Graham Dawbarn, Whitfield Lewis & C.A. Richards.
Credit, Architectural Review, June, 1948, page 249.

IRREGULAR TYPE PLAN

7 Units/Landing

1, 2 & 3 Bedrooms

A CLASSIFICATION OF

53 PROJECT

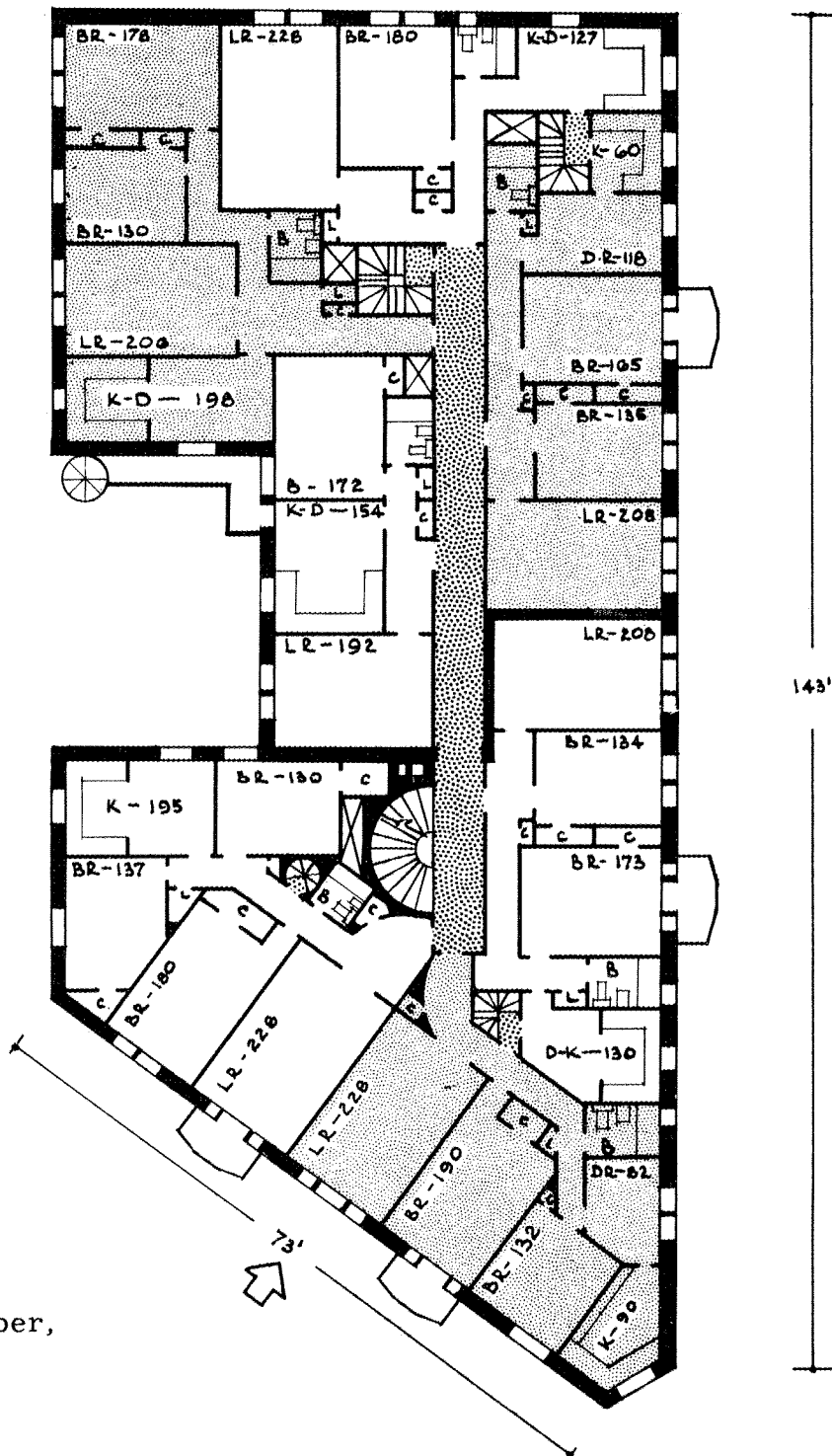
Apartment House, Cote St. Luc &
Draper, Montreal, Quebec.

APARTMENT HOUSE PLANS

IRREGULAR TYPE PLAN

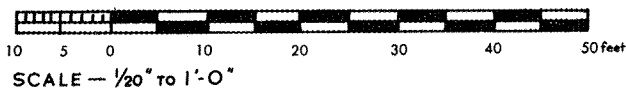
7 Units/Landing

1, 2 & 3 Bedrooms



Apartment House,
Cote St. Luc & Draper,
Montreal, Quebec.

53



MAISONETTE, Y TYPE PLAN
3 Units/Landing
2 Bedrooms

A CLASSIFICATION OF

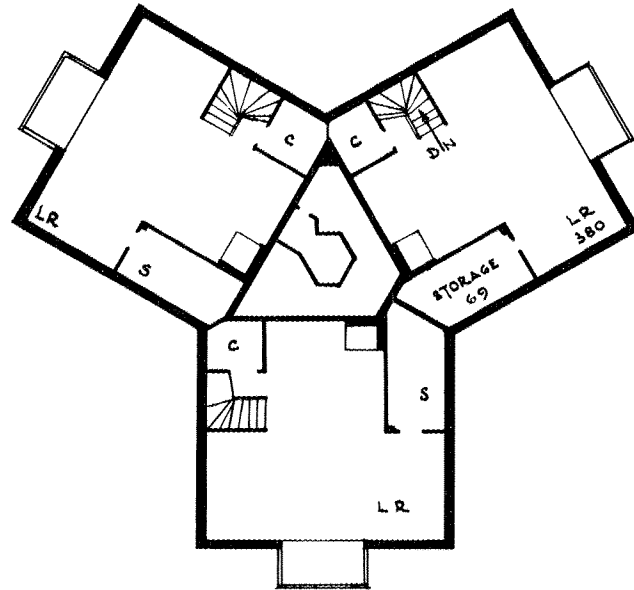
54	PROJECT	NYA SMALHUS, Grondal, Stockholm, Sweden.
	ARCHITECTS	Backstrom & Reinius.
	COMPLETION DATE	1946.
	NO. OF BUILDINGS	24 three storey buildings, 18 of which are grouped in one super block.
	DWELLING TYPES	216 three and five room dwelling units.
	CONSTRUCTION	Colour-washed rendered exterior walls of 10" concrete blocks; pitched roofs.
	AMENITIES	Shops and landscaped terrace garden.

APARTMENT HOUSE PLANS

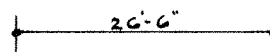
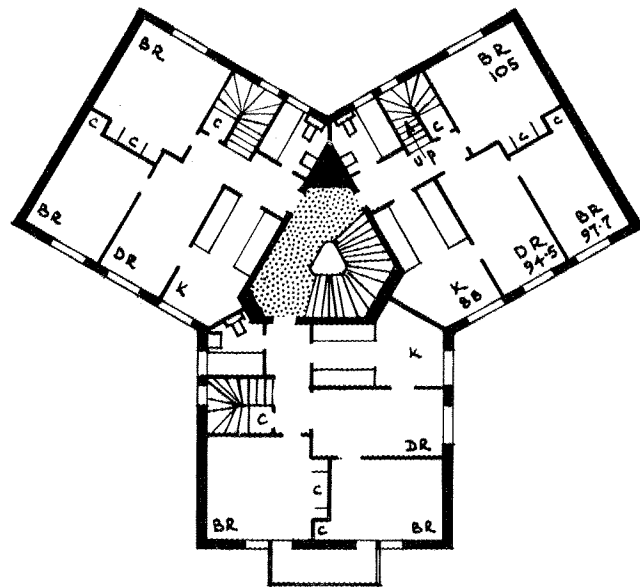
MAISONETTE, Y TYPE PLAN
3 Units/Landing
2 Bedrooms

NYA SMALHUS,
Grondal, Stockholm,
Sweden.

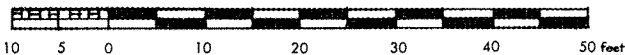
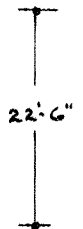
54



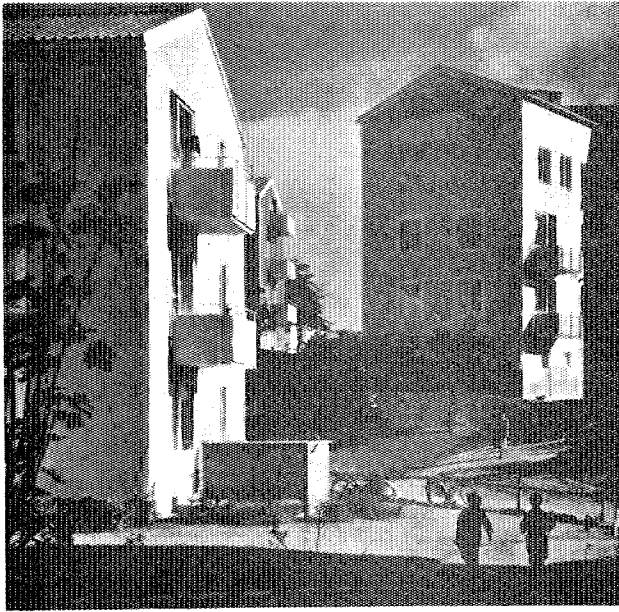
UPPER FLOOR PLAN



LOWER FLOOR PLAN



SCALE — 1/20" TO 1"=0"



NYA SMALHUS, Grondal,
Stockholm, Sweden.
Architects, Backstrom & Reinius.



Note: The two lower floors of the building shown on this page are devoted to apartments and the two upper floors are combined to form two storey dwelling units, or 'Maisonettes'; in this case with the entrance hall, bathroom, kitchen, dining & bed rooms on the lower floor and the living room on the floor above directly under the roof. This room is lit by a window giving access on to a balcony in the gable ends of the building.

Credit, Architectural Review,
August, 1949, page 82.



**MAISONETTE,
BALCONY ACCESS TYPE PLAN**
4 Units/Landing
3 Bedrooms
Elevator

A CLASSIFICATION OF

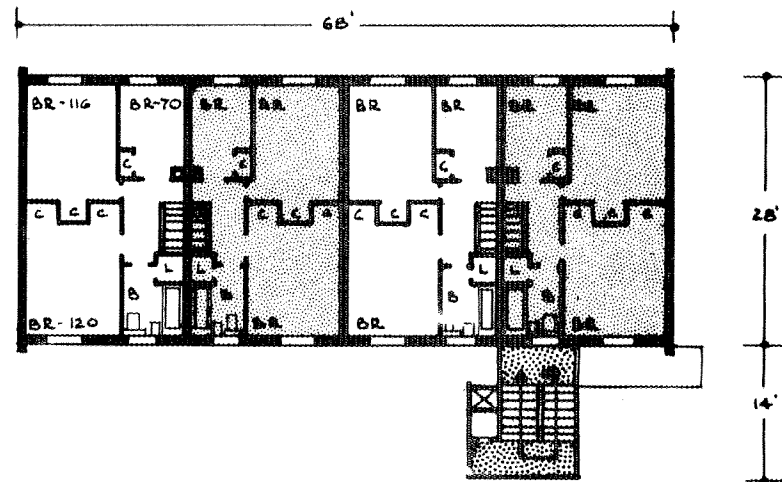
55	PROJECT	KENMURE ROAD, Hackney, London, England.
	ARCHITECTS	Edward D. Mills.
	COMPLETION DATE	1948.
	PLOT AREA	.275 acres.
	NO. OF BUILDINGS	A single five storey basementless building.
	DWELLING TYPES	8 five room maisonettes, four to an access landing and 1 penthouse apartment on the top floor.
	CONSTRUCTION	Reinforced concrete frame combined with 11" cavity brickwork screen walls.

APARTMENT HOUSE PLANS

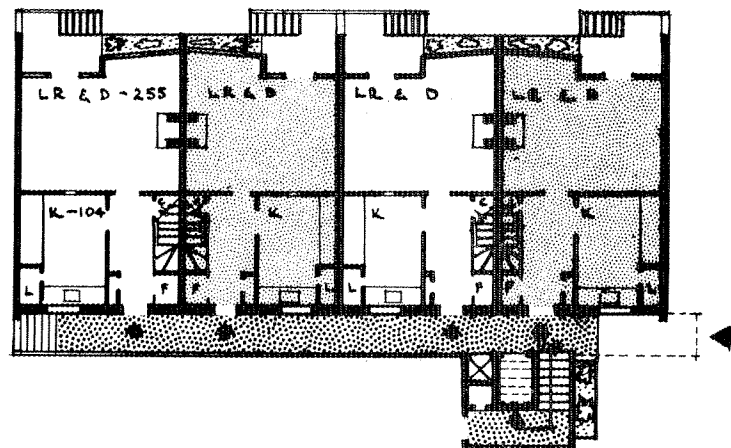
MAISONETTE,
BALCONY ACCESS TYPE PLAN
4 Units/Landing
3 Bedrooms
Elevator

Kenmure Road,
Hackney, London;
England.

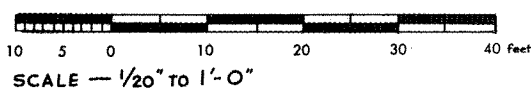
55



SECOND & FOURTH FLOORS



GROUND & THIRD FLOORS



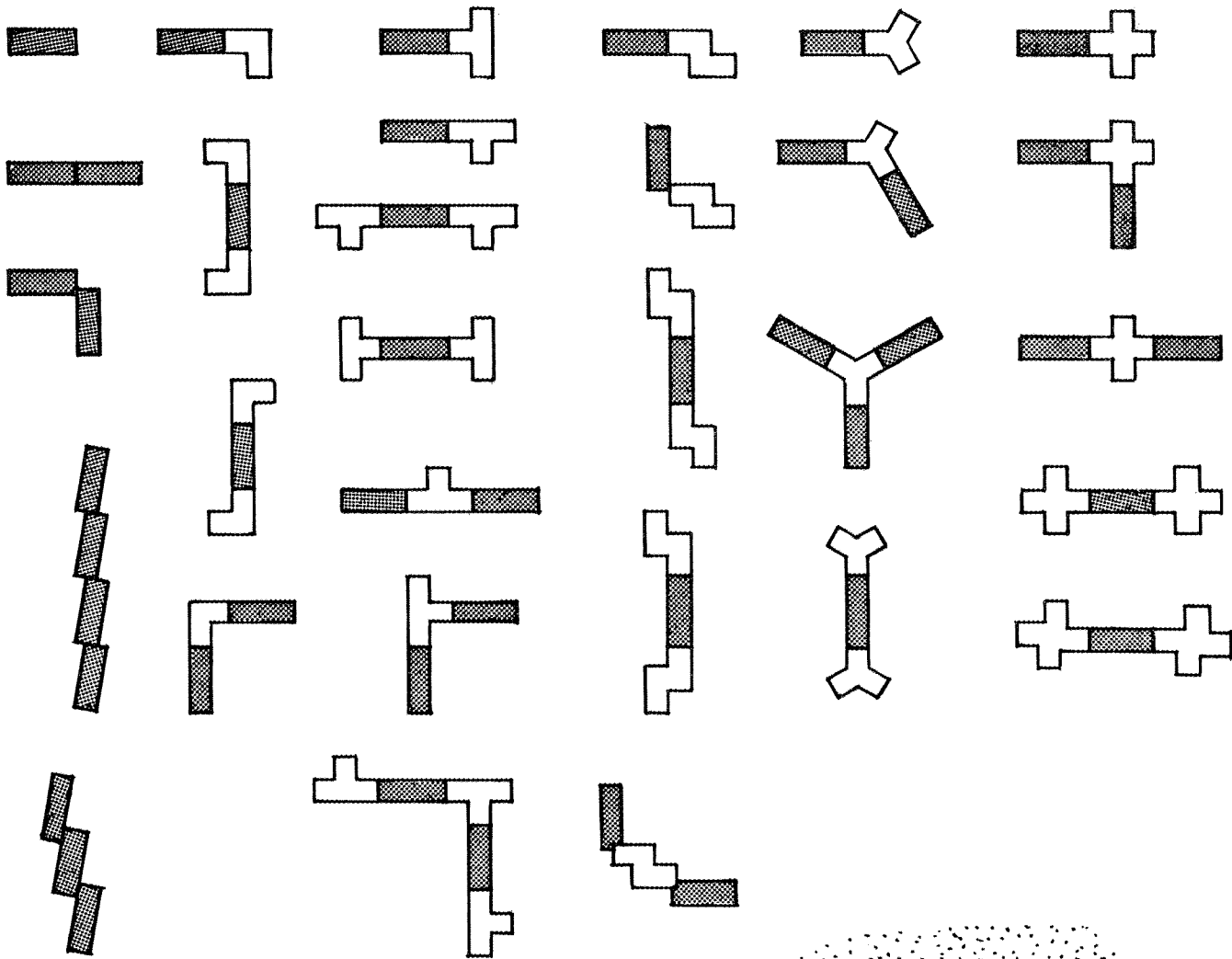
GROUPING OF STRIP TYPE PLAN BUILDINGS



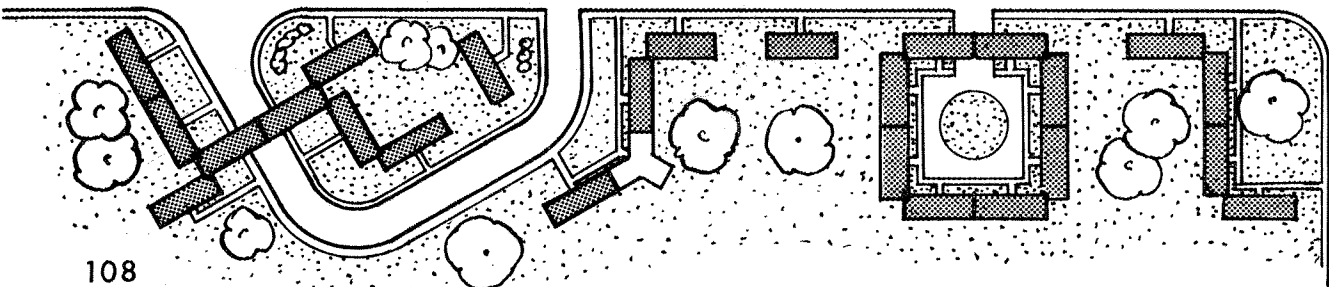
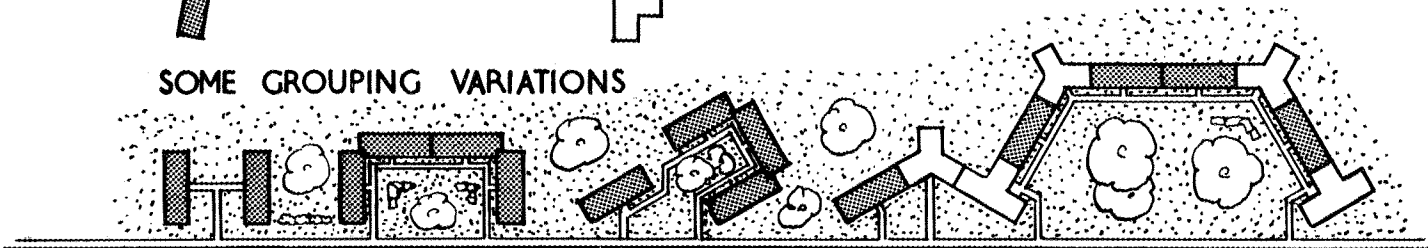
BASIC
COMBINATIONS

STRIP TYPE PLAN COMBINED WITH

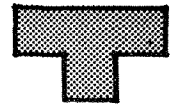
L-TYPE T-TYPES Z-TYPES Y-TYPES CROSS & OFF-SET CROSS TYPE



SOME GROUPING VARIATIONS



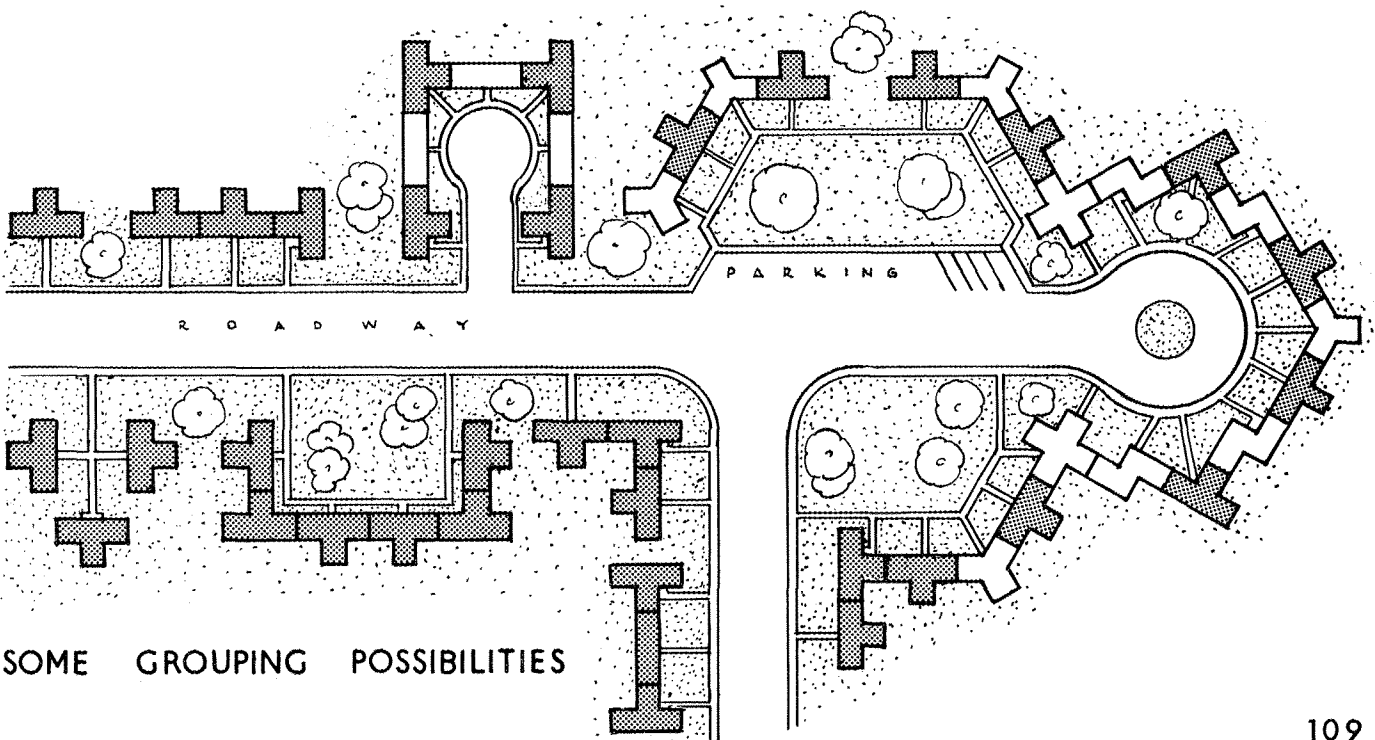
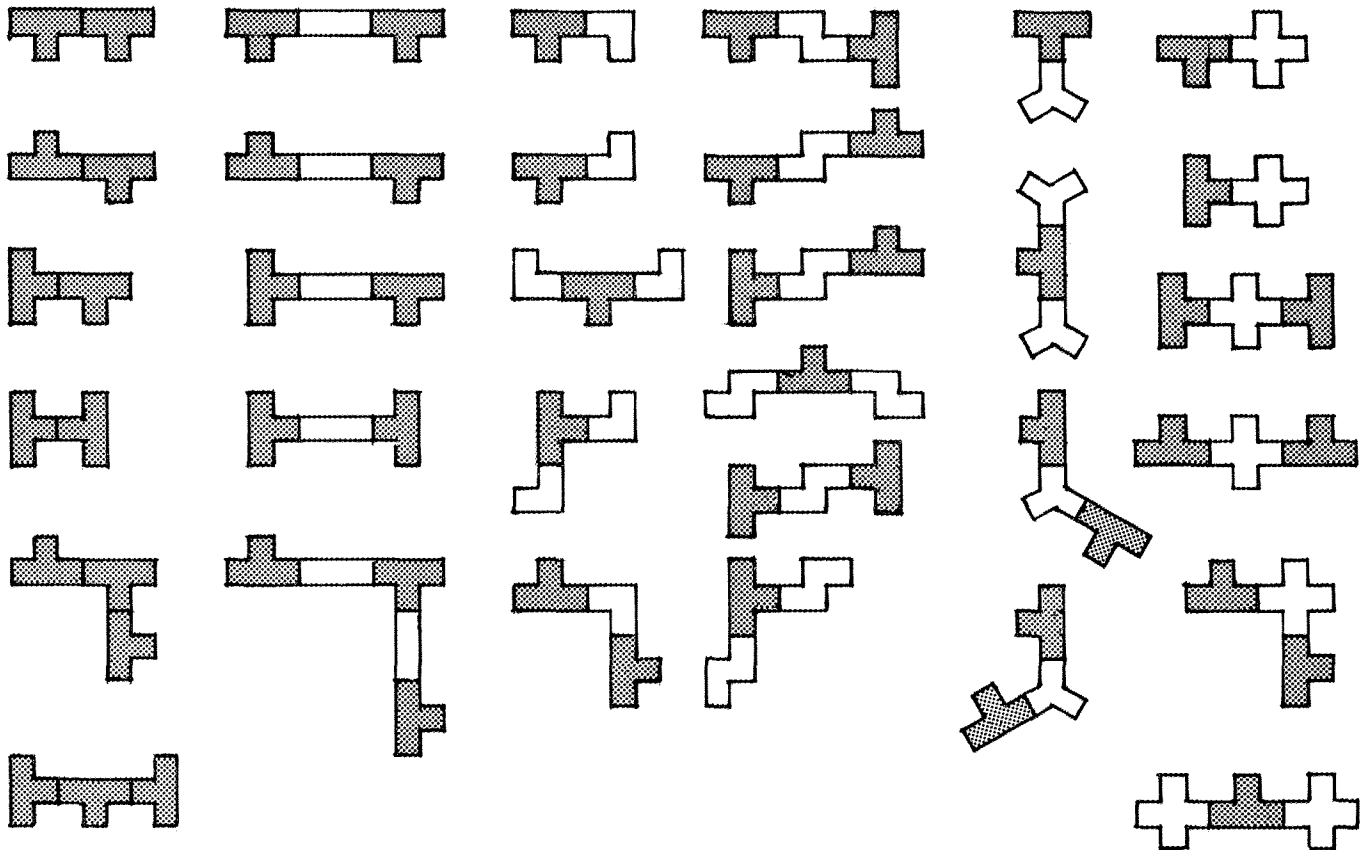
GROUPING OF T-TYPE PLAN BUILDINGS



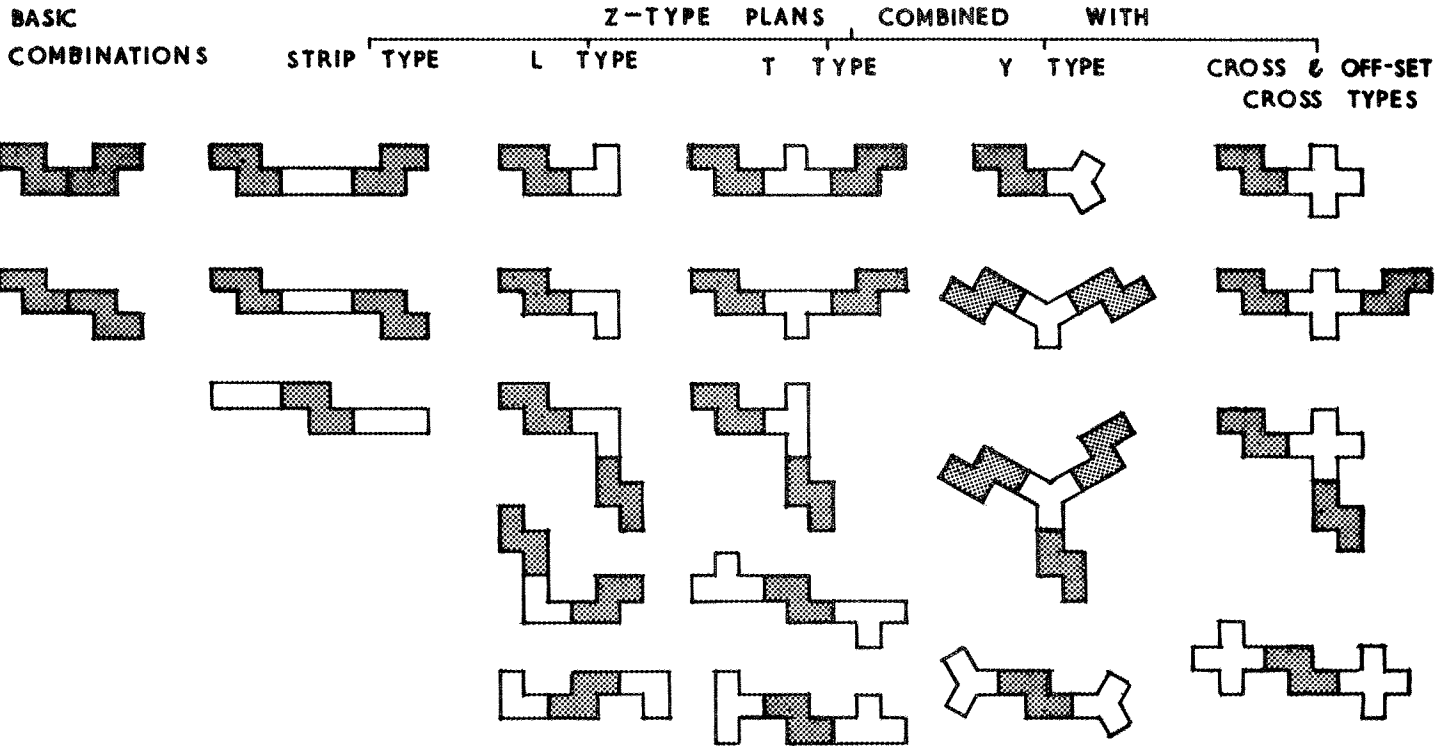
BASIC COMBINATIONS

T-TYPE PLAN COMBINED WITH

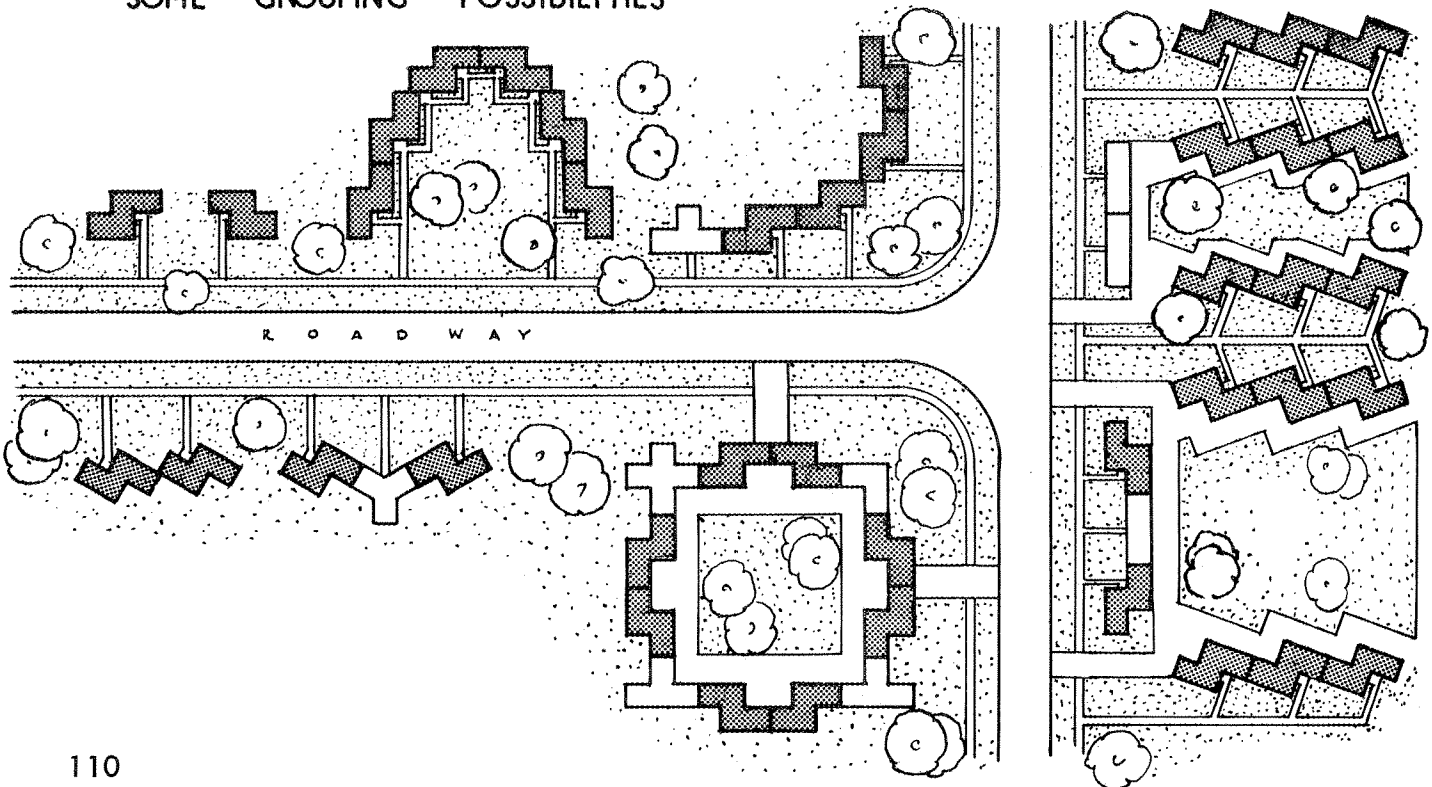
STRIP TYPE	L-TYPE	Z-TYPE	Y-TYPE	CROSS & OFF-SET CROSS TYPE
------------	--------	--------	--------	----------------------------



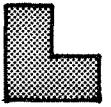
GROUPING OF Z - TYPE PLAN BUILDINGS



SOME GROUPING POSSIBILITIES



GROUPING OF L - TYPE PLAN BUILDINGS



BASIC
COMBINATIONS

L-TYPE PLAN COMBINED WITH

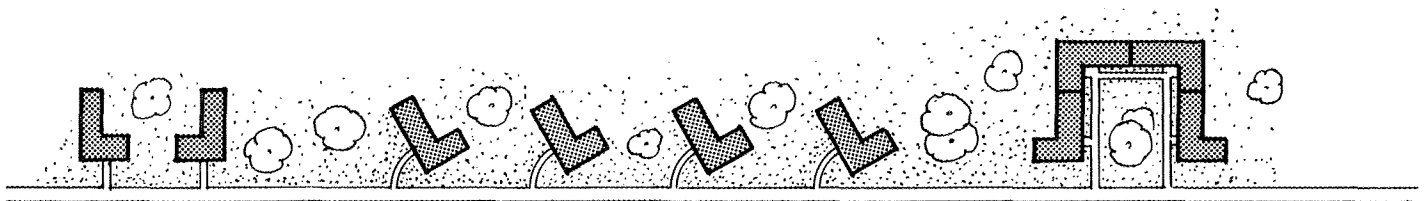
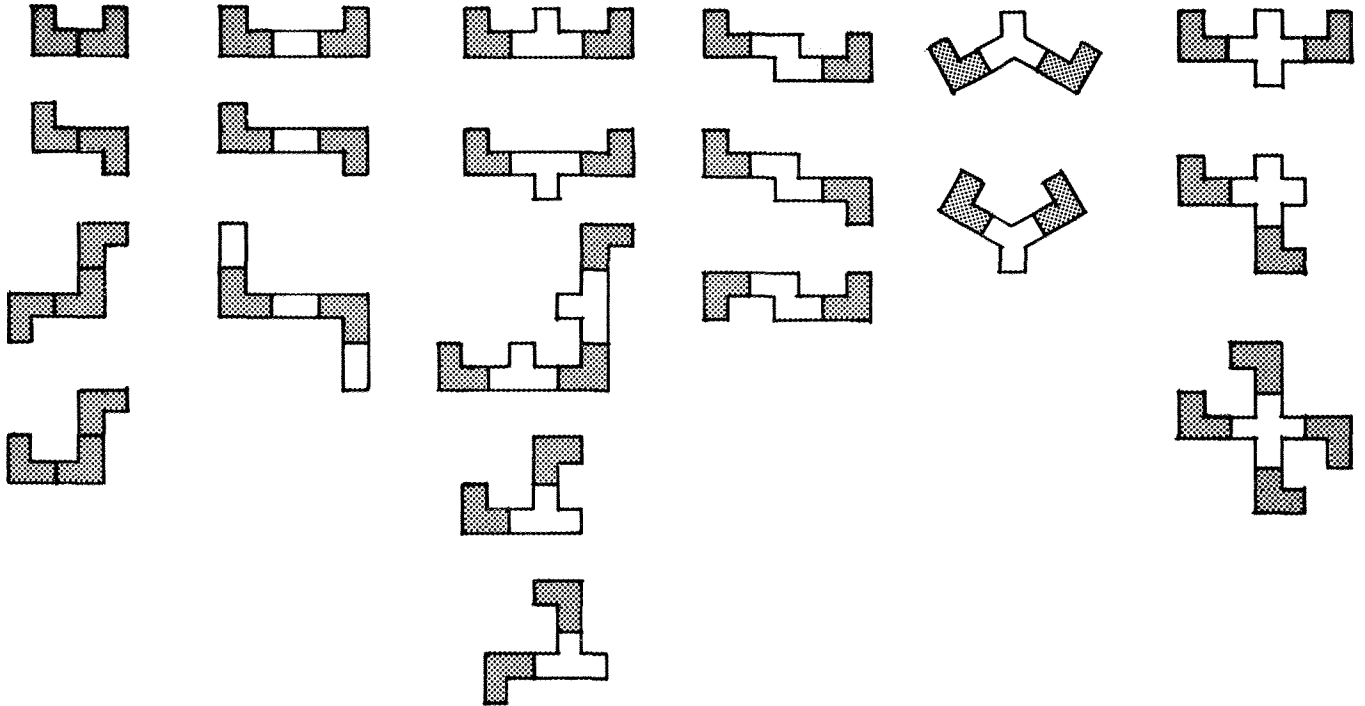
STRIP TYPE

T-TYPE

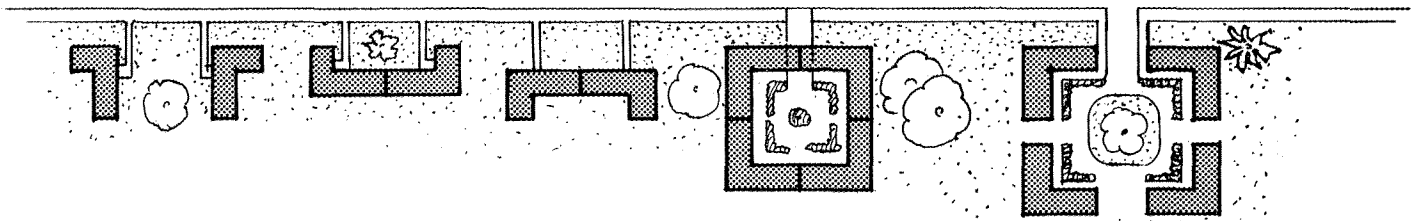
Z-TYPE

Y-TYPE

CROSS & OFF-SET
CROSS TYPES

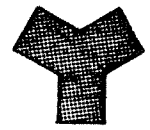


R O A D W A Y



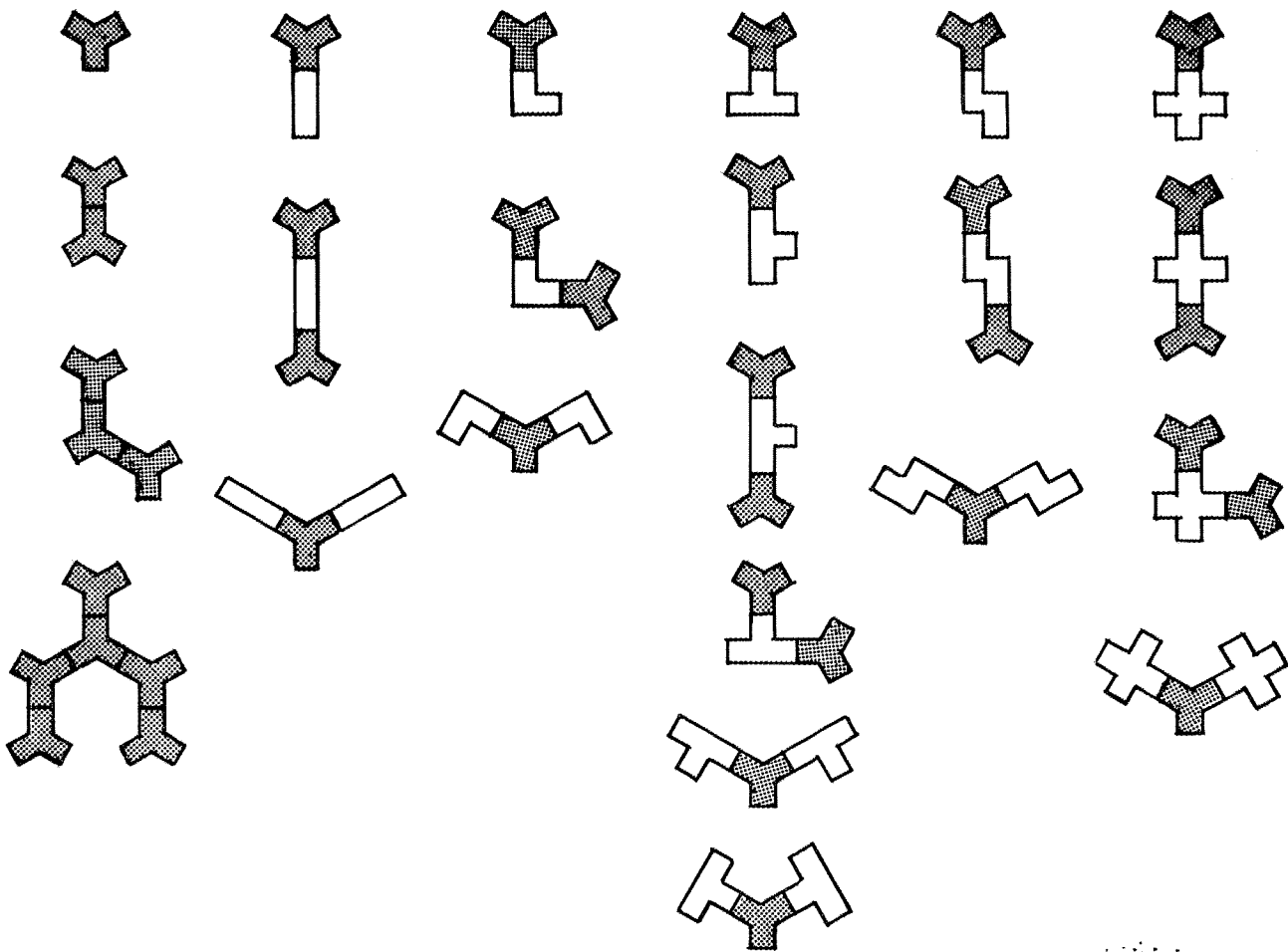
SOME GROUPING POSSIBILITIES USING L SHAPES ONLY

GROUPING OF Y-TYPE PLAN BUILDINGS

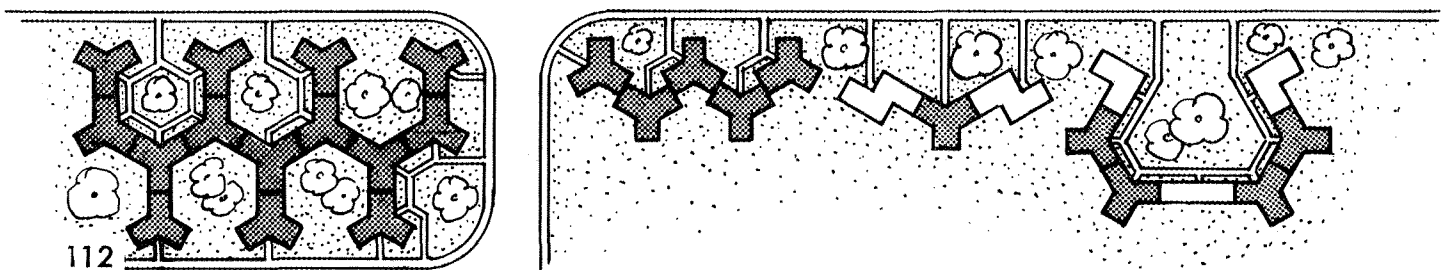
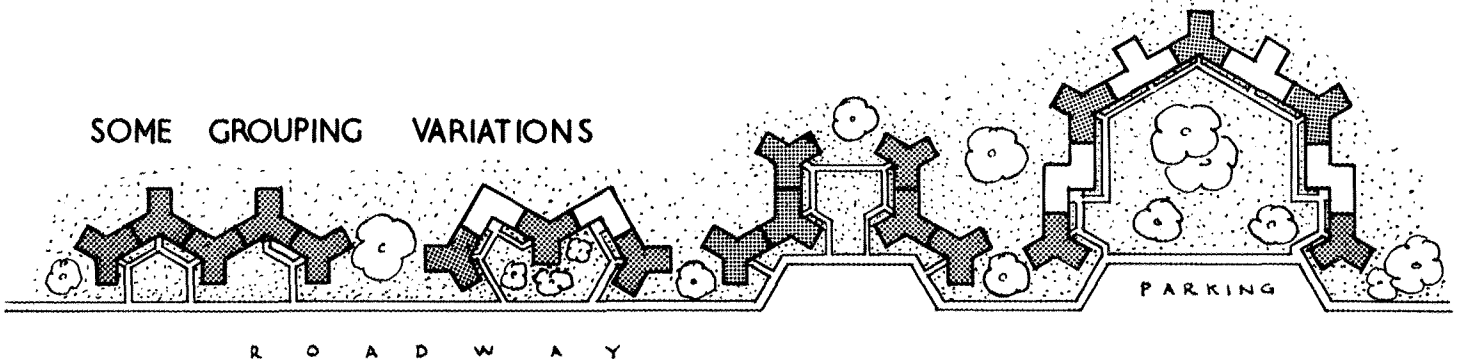


BASIC
COMBINATIONS

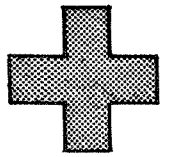
Y-TYPE PLAN COMBINED WITH
 STRIP TYPE L-TYPE T-TYPE Z-TYPE CROSS & OFF-SET CROSS TYPE



SOME GROUPING VARIATIONS



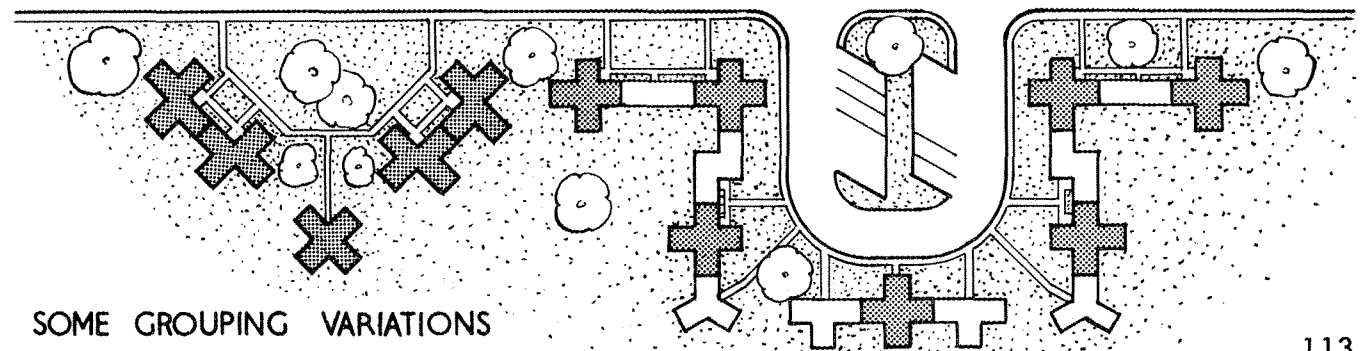
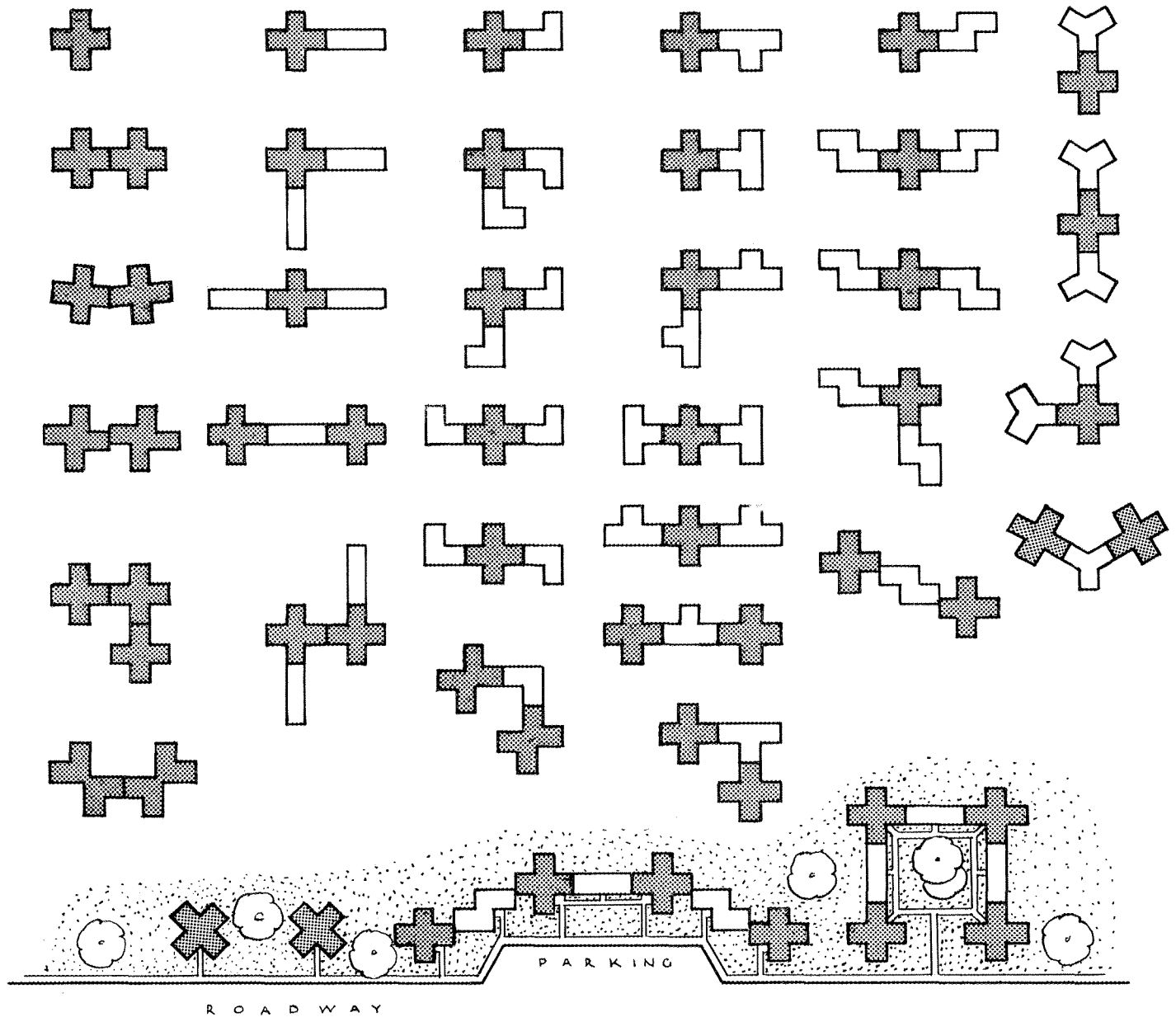
GROUPING OF CROSS TYPE PLAN BUILDINGS



BASIC
COMBINATIONS

CROSS TYPE PLAN COMBINED WITH

STRIP TYPE L- TYPE T- TYPE Z- TYPE Y- TYPE



SOME GROUPING VARIATIONS

<u>PROJECT NAME</u>	<u>REFERENCE</u>
1. Killingsworth Park. Portland, Oregon, USA	"Neighbourhoods Built for Better Housing" Land Planning Bulletin #4, FHA. p. 9
2. Ordway Gardens. Washington, D.C., USA.	"Neighbourhoods Built for Better Housing" Land Planning Bulletin #4, FHA. p. 17
3. Example from	"Planning Rental Housing Pro- jects." FHA. p. 13 fig. 4
4. Example from	"Planning Rental Housing Pro- jects." FHA. p. 39 fig. 37
5. Callaway Apart- ments. Atlanta, Georgia, USA.	Architectural Forum, Magazine of Building, September '48. p. 131
6. Example from	"Planning Rental Housing Pro- jects." FHA. p. 13
7. Example from	Practical Builder, Sept. '47. p. 10
8. Example from	"Planning Rental Housing Pro- jects." FHA. p. 39
9. Apartments at Seattle, Wash., USA.	Practical Builder, Aug. '47. p. 22
10. Typical Montreal 'cold flat'	Plans from C.M.H.C., Head Office, Ottawa.
11. Callaway Apart- ments, Atlanta, Georgia, USA.	Architectural Forum, Magazine of Building, September '48. p. 131
12. Apartments at Clay- ton, Missouri, USA.	Practical Builder, July '47. p. 28
13. Mann Ave. Apart- ments, Ottawa, Ont., Canada.	Plans from C.M.H.C., Head Office, Ottawa.
14. Tuft's Cove. Dartmouth, N.S., Canada.	Plans from C.M.H.C., Head Office, Ottawa.
15. Mellish St. Apart- ments. Poplar, London, England.	Architectural Design, April '48. p. 79
15a. Adaptation of above plan.	
16. Typical Montreal 'cold flat'	Plans from C.M.H.C., Head Office, Ottawa

<u>PROJECT NAME</u>	<u>REFERENCE</u>
17. Allandale Flats. Churchill Park Village, St. John's, Newfoundland; Canada.	St. John's Housing Commission, Newfoundland.
18. Tuft's Cove. Dartmouth, N.S., Canada.	Plans from C.M.H.C., Head Office, Ottawa.
19. Mann Ave. Apart- ments. Ottawa, Ont., Canada.	Plans from C.M.H.C., Head Office, Ottawa.
20. Winchester Hood Apartments. Chicago, Ill., USA.	Architectural Forum, Magazine of Building, January '50. p. 81 NOTE: For similar type apart- ments by the same architects see also Architectural Record, Sept. '50 p. 142, which illu- strates the LUNT-LAKE APART- MENTS, Chicago.
21. Example from	"Home & Environment" by p. 78 W. Segal. fig. 142
22. New Pond House. Chelsea, London, England.	Architectural Design, Nov. '48 p. 235
23. Example from	"Planning Rental Housing Pro- p. 21 jects" FHA. fig. 16
24. South Jamaica Houses. New York City, N.Y., USA.	"10th Annual Report of N.Y.C. H.A.", 1944. p. 49
25. Built by Acme Co., Aberdeen, S.D., USA.	American Builder, March '49. p. 106
26. Catherine Place. 1421 Maple Street, Vancouver, B.C. Canada.	Plans from C.M.H.C., Head Office, Ottawa.
27. Design built at Hamilton, Kitchener, Brantford, London, Sudbury, Ont., Canada (5 projects)	Plans from C.M.H.C., Head Office, Ottawa.
28. Design built at Toronto & Stam- ford Center, Ont., Canada (2 projects)	Plans from C.M.H.C., Head Office, Ottawa.

<u>PROJECT NAME</u>	<u>REFERENCE</u>
29. Design built at Niagara Falls, Kitchener, St. Catherines, Burlington, Oak- ville, Ont., Canada (5 projects)	Plans from C.M.H.C., Head Office, Ottawa.
30. Parkside Houses. New York City, N.Y., USA.	Architectural Forum, Magazine of Building, June '49. p. 88
31. Sedgewick Houses. New York City, N.Y., USA.	Architectural Forum, Magazine of Building, June '49. p. 89
32. Parkside Houses. New York City, N.Y., USA.	Architectural Forum, Magazine of Building, June '49. p. 88
33. Dyckman Houses. New York City, N.Y., USA.	Architectural Forum, Magazine of Building, June '49. p. 89
34. Gowanus Houses. New York City, N.Y., USA.	"10th Annual Report of N.Y.C. H.A.", 1944 p. 90
35. Apartments at Whitton, Middlesex, U.K.	Architects' Journal, Sept. 9, '48.
36. Gun Hill Houses. New York City, N.Y., USA.	Architectural Forum, Magazine of Building, June '49. p. 88
37. Riverside Terrace Housing. Paterson, N.J., USA.	Architectural Forum, Magazine of Building, July '44. p. 77
38. Kingsborough Houses. New York City, N.Y., USA.	"10th Annual Report of N.Y.C. H.A.", 1944. p. 57
39. The Hainault. 825 Gilford Street, Vancouver, B.C., Canada.	Plans from C.M.H.C. Head Office, Ottawa.
40. Nya Smalhus, Grondal, Stockholm, Sweden.	Architectural Review, June '48. p. 247
41. Queensbridge Houses. New York City, N.Y., USA.	Architectural Forum, Magazine of Building, January '40. p. 13

<u>PROJECT NAME</u>	<u>REFERENCE</u>	
42. Hill Crest, North Hill, Hornsey, London, England.	Architects' Journal, April 28, '49.	p. 383
43. Marcy Houses. New York City, N. Y., H. A. ", 1944. USA.	"10th Annual Report of N. Y. C. New York City, N. Y., H. A. ", 1944.	p. 89
44. Apts. on Ridgewood Road, Montreal, P. Q. Office, Ottawa. Canada.	Plans from C. M. H. C., Head Office, Ottawa.	
45. East River Houses. USA.	"10th Annual Report of N. Y. C. New York City, N. Y., H. A. ", 1944.	p. 53
46. Morrisania Housing. USA.	"10th Annual Report of N. Y. C. New York City, N. Y., H. A. ", 1944.	p. 84
47. Astoria Houses. USA.	"The significance of the work of New York City, N. Y., the New York City Housing Authority." by A. I. A. (New York Chapter) 1949.	p. 30
48. Farragut Houses. USA.	"The significance of the work of New York City, N. Y., the New York City Housing Authority." by A. I. A. (New York Chapter) 1949.	p. 30
49. Danvikslippan 'Point' Houses. Stockholm, Sweden.	"The Modern Flat" by Yorke & Gibberd.	p. 170
50. Typical Montreal 'cold flat'	Plans from C. M. H. C., Head Office, Ottawa.	
51. Fordham Hill. New York City, N. Y., USA.	Architectural Forum, Magazine of Building, March '50.	p. 135
52. Dombey Street Apartments. London, England.	Architectural Review, May '49.	p. 234
53. Apartment House, Cote St. Luc & Draper, Montreal, P. Q., Canada.	Plans from C. M. H. C., Head Office, Ottawa.	
54. Nya Smalhus. Stockholm, Sweden.	Architectural Review, June '48.	p. 247
55. Kenmure Road, London, England.	Architectural Review, May '49.	p. 235