

10F0012
1992
Feb.
c. 2

Prairie Update

Economic indicator
report



• Regional Offices



Statistics
Canada

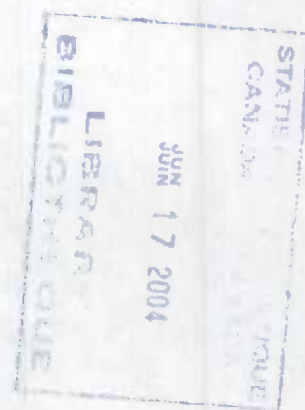
Statistique
Canada

Canada

STATISTICS CANADA PRAIRIE REGION

Monthly Economic Indicator Report

February 1992



Statistics Canada
Advisory Services
Park Square, 8th Floor
10001 Bellamy Hill
Edmonton, Alberta
T5J 3B6

Statistics Canada
Advisory Services
MacDonald Building
300, 344 Edmonton Street
Winnipeg, Manitoba
R3B 3L9

Statistics Canada
Advisory Services
Avord Tower, 9th Floor
2002 Victoria Avenue
Regina, Saskatchewan
S4P 0R7

Statistics Canada
Advisory Services
401, First Street Plaza
138 - 4th Avenue S.E.
Calgary, Alberta
T2G 4Z6

Reference: Statistics Canada
Prepared using CANSIM (Electronic Data Bank).

AUSSI DISPONIBLE EN FRANÇAIS

PRICE: \$60.00 per year

TABLE OF CONTENTS

1. HIGHLIGHTS

2. TIME SERIES

3. DEFINITIONS

4. NEW RELEASES AND UPCOMING EVENTS

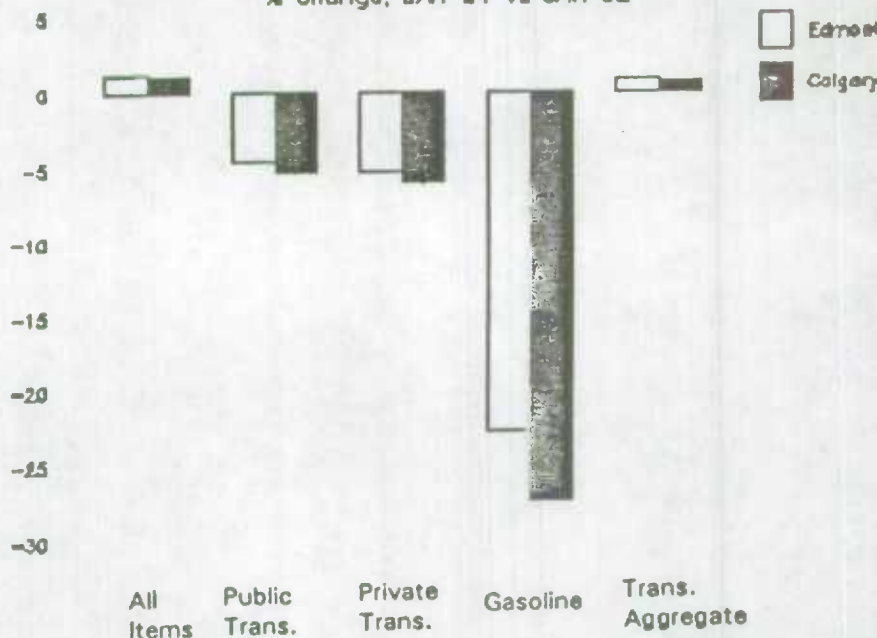
ALBERTA

The Consumer Price Index

The Consumer Price Index for Alberta rose by 0.4 index points to reach 125.3 in January, for a year over year increase of 1.1%. January 1992 C.P.I. year over year monthly comparisons are the first to be made with the G.S.T. in effect for both years. In Edmonton, higher food prices as well as increases in transportation costs such as gasoline, insurance and public bus fares were contributing factors. By contrast, Calgary's transportation index fell due to declines in prices

for gasoline, automotive vehicles and air travel. Calgary did experience increased charges for piped gas, water and postal charges which contributed to increases in the Housing Index, pushing the overall Alberta CPI upwards.

The Consumer Price Index, Transportation Items
% change, JAN 91 vs JAN 92



The Labour Force

In January, Alberta's labour force increased by 4 000 to 1.357 million. Employment declined by 1.2%, reaching 1.216 million in January. The provincial unemployment rose (actual) from 9.0% in December to 10.4% in January. Seasonally adjusted unemployment rate for Alberta was 9.4% for January, up from 9.1% in December.

Retail Sales

In December, retail sales in Alberta were \$ 1 876 300 000, a decline of 7.1% over this period in 1990, but still somewhat stronger than the national decline of 7.8%. Retail sales totalled \$18 856 900 000 in Alberta for 1991, a decline of 5.1% over 1990 totals. Recreational and motor vehicle sales registered a slight increase in December, reaching \$2 435 800 000, up from \$2 434 900 000 in November.

Building Permits

Residential building permits showed a strong increase in November at \$896 880 000, a 10.1% increase over November 1990. Non-residential building permits showed a decline of 20.2% over November 1990.

The Population

Alberta's population increased to 2 538 500 in the fourth quarter of 1991, up from 2 525 200 in the previous quarter. This is an increase of 2.1% over the fourth quarter 1990 figures, a notably strong increase among the prairie provinces. Manitoba's population increased by 0.4% and Saskatchewan's population decreased by 0.2% over the same period.

Saskatchewan Prairie Update

CONSUMER PRICE INDEX

In Regina the 0.3% rise in the all-items index reflected higher overall food prices (most notably for fresh produce, soft drinks and restaurant meals), increased transportation charges, and higher prices for men's and women's wear. The rise in transportation was mainly due to higher gasoline prices (end of "price wars"), offset partially by lower prices for automotive vehicles.

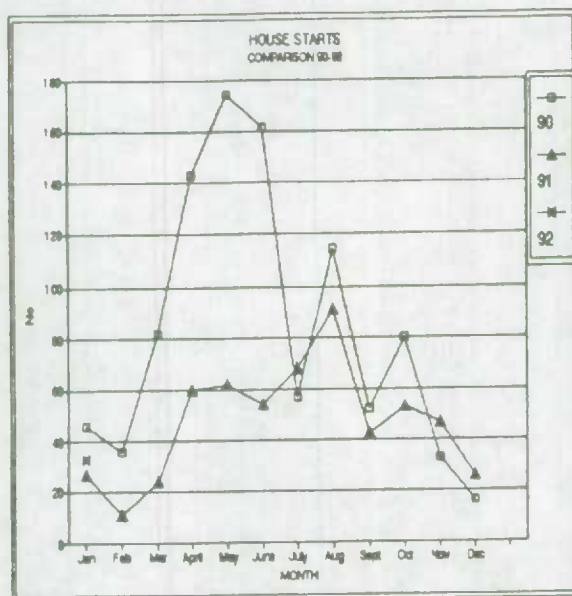
In Saskatoon the 0.1% rise in the all-items index was largely due to higher prices in for men's and women's wear and food (most notably fresh vegetables, soft drinks and cereal products) and cigarettes.

Saskatchewan was up by 0.5% over last year, Regina up 1% but Saskatoon was the same this month as last year.

HOUSING STARTS

(Centers 10,000 and Over)

While Housing starts were down dramatically last year, this year has at least started off on the right foot. Even though the numbers are small we see a 27% increase from January of last year to January 1992.



NEW MOTOR VEHICLE SALES

As of the end of December of this year 33,076 units had been sold. This is down from 35,696 for the same period last year. A 7.3% decrease which is 7.6% decrease in dollars.

RETAIL TRADE

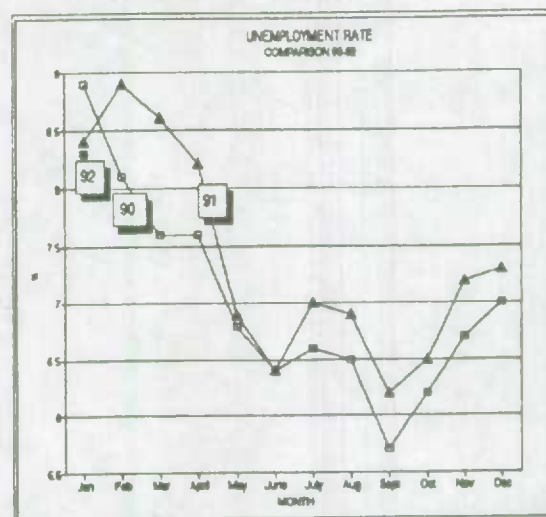
As of the end of November this year retail trade was at 4.7 billion dollars. This is down 2.6% from last year

for the same period when sales were \$140 million more at 4.8 billion.

LABOUR FORCE

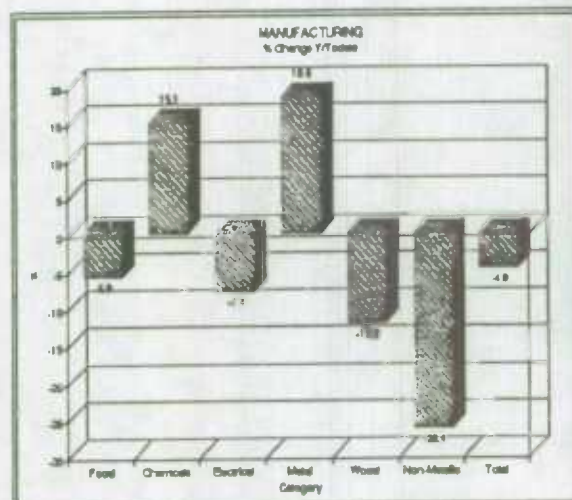
The Unemployment rate for January was 8.3% for Saskatchewan in comparison to 7.3% for December, 1991 but the same as January 1991.

However the 432,00 people employed was still 3,000 fewer than in January, 1991.



MANUFACTURING

The following graph shows a comparison between this year and last (December 31) for some major categories in manufacturing. Chemicals and chemical products show a large increase while non-metallic mineral products show a large decrease. Overall there is nearly a 5% decrease.



MANITOBA

The Consumer Price Index

The January All-Items index for Winnipeg remained unchanged from December at 125.7 (1986 = 100). Upward pressure was exerted by higher prices for men's and women's clothing and increased charges for basic telephone services, water, natural gas and postage. Also observed were higher overall prices for food, personal care supplies and prescribed medicines. Balancing these effects were lower transportation charges, including lower prices for gasoline, automotive vehicles, intercity bus fares, air fares and holiday package trips. Cigarette prices also showed a decline. The yearly change in the All-Items index for Winnipeg and for Manitoba was 1.1%.

The Labour Force

The seasonally adjusted unemployment rate in Manitoba jumped to 9.9% in January from 8.2% in December. On an unadjusted, year over year basis, this reflects a decrease in the labour force of 3 000 while 15 000 fewer people were employed. In Winnipeg, the adjusted three-month moving average unemployment rate stood at 10.8%, compared to 8.9% in Manitoba.

Retail Sales

The total retail sales for all stores in Manitoba reached \$623 600 000 in December, down 6.8% from December 1990. This brings the 1991 total to \$6 164 200 000, representing an annual decline of 6.6%.

Manufacturing Shipments

Manitoba reported \$526 124 000 in manufacturing shipments for December, down 2.1% from December 1990. From 1990 to 1991, an overall decline of 12.8% was observed.

	Reference Period	Data for Reference Period	Data for Previous Period	Percent Change from Last Period	Data for same Per. Last Year	% Change from same Per. a Year ago
LABOUR FORCE ('000)						
Canada.....	92-Jan	13433.	13513.	-0.6	13407.	0.2
Manitoba.....	92-Jan	527.	528.	-0.2	530.	-0.6
Winnipeg.....	92-Jan	335.	336.	-0.3	333.	0.6
Saskatchewan.....	92-Jan	471.	471.	0.0	475.	-0.8
Regina.....	92-Jan	92.	93.	-1.1	96.	-4.2
Saskatoon.....	92-Jan	96.	96.	0.0	89.	7.9
Alberta.....	92-Jan	1357.	1353.	0.3	1325.	2.4
Edmonton.....	92-Jan	416.	413.	0.7	393.	5.9
Calgary.....	92-Jan	394.	395.	-0.3	394.	0.0
EMPLOYED ('000)						
Canada.....	92-Jan	11882.	12129.	-2.0	11952.	-0.6
Manitoba.....	92-Jan	469.	484.	-3.1	484.	-3.1
Winnipeg.....	92-Jan	299.	303.	-1.3	304.	-1.6
Saskatchewan.....	92-Jan	432.	436.	-0.9	435.	-0.7
Regina.....	92-Jan	87.	88.	-1.1	90.	-3.3
Saskatoon.....	92-Jan	87.	88.	-1.1	79.	10.1
Alberta.....	92-Jan	1216.	1231.	-1.2	1209.	0.6
Edmonton.....	92-Jan	370.	371.	-0.3	359.	3.1
Calgary.....	92-Jan	352.	357.	-1.4	363.	-3.0
UNEMPLOYED ('000)						
Canada.....	92-Jan	1551.	1384.	12.1	1455.	6.6
Manitoba.....	92-Jan	57.	44.	29.5	46.	23.9
Winnipeg.....	92-Jan	36.	34.	5.9	29.	24.1
Saskatchewan.....	92-Jan	39.	34.	14.7	40.	-2.5
Regina.....	92-Jan	5.	5.	0.0	6.	-16.7
Saskatoon.....	92-Jan	9.	9.	0.0	10.	-10.0
Alberta.....	92-Jan	141.	122.	15.6	116.	21.6
Edmonton.....	92-Jan	46.	42.	9.5	34.	35.3
Calgary.....	92-Jan	42.	38.	10.5	31.	35.5
UNEMPLOYMENT RATE (%)						
Canada.....	92-Jan	11.5	10.2	12.7	10.9	5.5
Manitoba.....	92-Jan	10.8	8.3	30.1	8.7	24.1
Winnipeg.....	92-Jan	10.7	10.0	7.0	8.8	21.6
Saskatchewan.....	92-Jan	8.3	7.3	13.7	8.4	-1.2
Regina.....	92-Jan	5.9	5.7	3.5	6.3	-6.3
Saskatoon.....	92-Jan	9.3	9.2	1.1	11.2	-17.0
Alberta.....	92-Jan	10.4	9.0	15.6	8.7	19.5
Edmonton.....	92-Jan	11.1	10.1	9.9	8.7	27.6
Calgary.....	92-Jan	10.7	9.6	11.5	7.9	35.4
UNEMPLOYMENT RATE (%) (Seasonally Adjusted)						
Canada.....	92-Jan	10.4	10.3	1.0	9.8	6.1
Manitoba.....	92-Jan	9.9	8.2	20.7	8.0	23.7
Saskatchewan.....	92-Jan	7.1	7.2	-1.4	7.2	-1.4
Alberta.....	92-Jan	9.4	9.1	3.3	7.8	20.5

	Reference Period	Data for Reference Period	Data for Previous Period	Percent Change from Last Period	Data for same Per. last Year	% Change from same Per. a Year ago
PARTICIPATION RATE (%)						
Canada.....	92-Jan	64.3	64.7	-0.6	65.1	-1.2
Manitoba.....	92-Jan	65.0	65.2	-0.3	65.7	-1.1
Winnipeg.....	92-Jan	67.0	67.3	-0.4	67.2	-0.3
Saskatchewan.....	92-Jan	65.4	65.3	0.2	65.9	-0.8
Regina.....	92-Jan	66.7	67.4	-1.0	69.4	-3.9
Saskatoon.....	92-Jan	68.2	68.7	-0.7	63.9	6.7
Alberta.....	92-Jan	71.7	71.6	0.1	71.4	0.4
Edmonton.....	92-Jan	72.7	72.2	0.7	69.9	4.0
Calgary.....	92-Jan	71.6	71.8	-0.3	73.7	-2.8
AVERAGE WEEKLY EARNINGS (All Employees, incl. overtime)						
INDUSTRIAL AGGREGATE (\$)						
Canada.....	91-Nov	549.15	550.82	-0.30	523.12	4.98
Manitoba.....	91-Nov	484.87	490.63	-1.17	464.88	4.30
Saskatchewan.....	91-Nov	482.14	484.78	-0.54	454.67	6.04
Alberta.....	91-Nov	549.92	553.83	-0.71	516.01	6.57
CONSUMER PRICE INDEX ALL-ITEMS (1986=100)						
Canada.....	92-Jan	127.0	126.4	0.5	125.0	1.6
Manitoba.....	92-Jan	125.6	125.7	-0.1	124.2	1.1
Saskatchewan.....	92-Jan	125.1	124.9	0.2	124.5	0.5
Alberta.....	92-Jan	125.3	124.9	0.3	123.9	1.1
Winnipeg.....	92-Jan	125.7	125.7	0.0	124.3	1.1
Regina.....	92-Jan	125.3	124.9	0.3	124.0	1.0
Saskatoon.....	92-Jan	124.5	124.4	0.1	124.5	0.0
Edmonton.....	92-Jan	125.4	124.6	0.6	123.9	1.2
Calgary.....	92-Jan	125.2	125.0	0.2	123.9	1.0
FOOD						
Canada.....	92-Jan	119.7	118.7	0.8	120.9	-1.0
Winnipeg.....	92-Jan	122.7	122.2	0.4	123.0	-0.2
Regina.....	92-Jan	125.1	124.1	0.8	125.3	-0.2
Saskatoon.....	92-Jan	124.3	124.0	0.2	124.9	-0.5
Edmonton.....	92-Jan	119.2	117.3	1.6	119.7	-0.4
Calgary.....	92-Jan	120.3	119.4	0.8	119.8	0.4
NEW HOUSING PRICE INDEX (1986=100)						
Canada.....	91-Dec	133.9	133.9	0.0	138.3	-3.2
Winnipeg.....	91-Dec	108.4	108.4	0.0	108.9	-0.5
Regina.....	91-Dec	112.9	112.9	0.0	109.3	3.3
Saskatoon.....	91-Dec	106.7	106.7	0.0	107.7	-0.9
Edmonton.....	91-Dec	141.7	141.5	0.1	140.1	1.1
Calgary.....	91-Dec	131.9	131.5	0.3	133.2	-1.0

	Reference Period	Data for Reference Period	Data for same Per. last Year	% Change from same Per. a Year ago	Total Year to date	%CHG, YTD over same period last yr.
MANUFACTURING SHIPMENTS (\$'000)						
Canada.....	91-Dec	20914162.	21353864.	-2.1	276591686.	-5.9
Manitoba.....	91-Dec	526124.	537228.	-2.1	6093244.	-12.8
Saskatchewan.....	91-Dec	248265.	266335.	-6.8	3415804.	-4.9
Alberta.....	91-Dec	1420680.	1539227.	-7.7	18469661.	-2.5
RETAIL SALES (millions \$)						
Department Store						
Type Merchandise (Raw)						
All Stores						
Canada.....	91-Dec	7971.9	8818.2	-9.6	60820.1	-7.8
Manitoba.....	91-Dec	282.6	304.3	-7.1	2052.0	-4.8
Saskatchewan.....	91-Dec	232.2	253.3	-8.3	1761.4	-9.2
Alberta.....	91-Dec	902.2	983.2	-8.2	7044.5	-3.9
RETAIL SALES (millions \$)						
Canada, Total, All Stores(Raw).....	91-Dec	17667.3	19169.5	-7.8	179281.1	-6.4
Supermarkets and Grocery stores....	91-Dec	3666.9	3789.4	-3.2	43038.9	1.1
All other food stores.....	91-Dec	357.8	379.2	-5.6	3647.2	-7.6
Drugs and medicine.....	91-Dec	958.2	918.6	4.3	9053.4	1.3
Men's clothing stores.....	91-Dec	277.0	346.4	-20.0	1703.8	-17.9
Women's clothing stores.....	91-Dec	501.1	507.2	-1.2	3667.8	-8.3
Other clothing stores.....	91-Dec	530.6	588.8	-9.9	3713.9	-7.5
Household furnitures and appl.....	91-Dec	828.7	1072.6	-22.7	7274.7	-16.4
Recreational and motor veh.....	91-Dec	2435.8	2434.9	0.0	36895.7	-9.9
Gasoline service stations.....	91-Dec	1092.0	1354.5	-19.4	14006.2	-8.8
General merchandise stores.....	91-Dec	2885.2	3104.9	-7.1	20739.5	-2.9
Manitoba, Total, All Stores.....	91-Dec	623.6	668.9	-6.8	6164.2	-6.6
Saskatchewan, Total, All Stores.....	91-Dec	517.9	555.3	-6.7	5237.6	-6.9
Alberta, Total, All Stores.....	91-Dec	1876.3	2019.5	-7.1	18856.9	-5.1
BUILDING PERMITS (\$'000)						
Manitoba-Total.....	91-Nov	29420.	54393.	-45.9	532137.	-24.7
Man Residential Total.....	91-Nov	12032.	15671.	-23.2	242020.	-27.9
Man Non-Residential Total.....	91-Nov	17388.	38722.	-55.1	290117.	-21.8
Winnipeg.....	91-Nov	19251.	33888.	-43.2	343828.	-25.1
Saskatchewan-Total.....	91-Nov	13278.	14176.	-6.3	310006.	-30.2
Sask Residential Total.....	91-Nov	6533.	3986.	63.9	87847.	-27.4
Sask Non-Residential Total.....	91-Nov	6745.	10190.	-33.8	222159.	-31.2
Regina.....	91-Nov	6196.	2314.	167.8	94944.	-13.0
Saskatoon.....	91-Nov	3039.	4874.	-37.6	92426.	-47.5
Alberta-Total.....	91-Nov	196209.	214940.	-8.7	2500015.	-11.7
Alta Residential Total.....	91-Nov	89688.	81446.	10.1	1278644.	-20.3
Alta Non-Residential Total.....	91-Nov	106521.	133494.	-20.2	1221371.	-0.5
Edmonton.....	91-Nov	50762.	63998.	-20.7	826646.	-8.4
Calgary.....	91-Nov	71507.	74347.	-3.8	786095.	-23.4

	Reference Period	Data for Reference Period	Data for same Per. last Year	% Change from same Per. a Year ago	Total Year to date	%CHG, YTD over same period last yr.
HOUSING STARTS (#)						
Canada (centres 10,000+).....	91-Dec	10220.	8148.	25.4	130094.	-13.6
Manitoba (centres 10,000+).....	91-Dec	55.	104.	-47.1	1438.	-36.8
Winnipeg.....	91-Dec	54.	100.	-46.0	1349.	-37.2
Saskatchewan (centres 10,000+)..	91-Dec	26.	16.	62.5	566.	-43.1
Alberta (centres 10,000+).....	91-Dec	791.	569.	39.0	10107.	-30.0
ELECTRIC POWER GENERATION (MWH)						
TOTAL ENERGY GENERATION						
Manitoba.....	91-Nov	2187165.	1794948.	21.9	20578854.	13.6
Saskatchewan.....	91-Nov	90967.	1191994.	-0.1	12333433.	-2.5
Alberta.....	91-Nov	3714232.	3749030.	-0.9	39789504.	2.6
TOTAL HYDRO GENERATION						
Manitoba.....	91-Nov	2147626.	1749041.	22.8	20308158.	14.1
Saskatchewan.....	91-Nov	315850.	293336.	7.7	3888363.	-1.0
Alberta.....	91-Nov	131309.	122683.	7.0	1898587.	-1.8

Published under the authority of the Minister of Supply and Services Canada. Extracts from this publication may be reproduced for individual use without permission provided the source is fully acknowledged. However, reproduction of this publication in whole or in part for purposes of resale or redistribution requires written permission from the Publishing Services Group, Permissions Officer, Canadian Government Publishing Centre, Ottawa, Canada K1A 0S9

NORTHWEST TERRITORIES

24-FEB-92

	Reference Period	Data for Reference Period	Data for Previous Period	Percent Change from Last Period	Data for same Per. last Year	% Change from same Per. a Year ago
AVERAGE WEEKLY EARNINGS (All Employees, incl. overtime)						
INDUSTRIAL AGGREGATE (\$)						
Northwest Territories...	91-Nov	764.87	776.66	-1.52	735.89	3.94
CONSUMER PRICE INDEX						
ALL-ITEMS (1986=100)						
Yellowknife.....	92-Jan	123.8	123.4	0.3	121.7	1.7
FOOD						
Yellowknife.....	92-Jan	116.9	116.7	0.2	116.0	0.8

	Reference Period	Data for Reference Period	Data for same Per. last Year	% Change from same Per. a Year ago	Total Year to date	%CHG, YTD over same period last yr.
RETAIL SALES (millions \$)						
Department Store						
Type Merchandise (Raw)						
All stores						
Northwest Territories.....	91-Dec	23.3	23.9	-2.5	205.3	-3.1
RETAIL SALES (millions \$)(Raw)						
Northwest Territories						
Total, All Stores.....	91-Dec	36.2	38.8	-6.7	359.6	-4.9
BUILDING PERMITS (\$'000)						
Northwest Territories-Total....	91-Nov	1021.	12963.	-92.1	50652.	-12.5
N.W.T. Residential Total....	91-Nov	391.	2051.	-80.9	22290.	0.1
N.W.T. Non-Residential Total	91-Nov	630.	10912.	-94.2	28362.	-20.4
ELECTRIC POWER GENERATION (MWH)						
TOTAL ENERGY GENERATION						
Northwest Territories.....	91-Nov	43358.	43417.	-0.1	430186.	1.3
TOTAL HYDRO GENERATION						
Northwest Territories.....	91-Nov	22670.	22268.	1.8	232398.	-0.4

	Reference Period	Data for Reference Period	Data for Previous Period	Percent Change from Last Period	Data for same Per. Last Year	% Change from same Per. a Year ago
QUARTERLY POPULATION ('000)						
Canada.....	1991-Q4	27125.8	27023.1	0.4	26744.3	1.4
Manitoba.....	1991-Q4	1096.7	1097.0	0.0	1092.6	0.4
Saskatchewan.....	1991-Q4	994.9	997.4	-0.3	996.9	-0.2
Alberta.....	1991-Q4	2538.5	2525.2	0.5	2487.2	2.1
NUMBER OF BIRTHS						
Manitoba.....	1991-Q3	4490.	4620.	-2.8	4520.	-0.7
Saskatchewan.....	1991-Q3	4010.	4310.	-7.0	4310.	-7.0
Alberta.....	1991-Q3	10730.	11100.	-3.3	10660.	0.7
Canada.....	1991-Q3	108010.	105880.	2.0	102140.	5.7
NUMBER OF DEATHS						
Manitoba.....	1991-Q3	2150.	2250.	-4.4	2120.	1.4
Saskatchewan.....	1991-Q3	1960.	1930.	1.6	1810.	8.3
Alberta.....	1991-Q3	3430.	3520.	-2.6	3390.	1.2
Canada.....	1991-Q3	46320.	48670.	-4.8	46030.	0.6
NUMBER OF MARRIAGES						
Manitoba.....	1991-Q3	3210.	2120.	51.4	3120.	2.9
Saskatchewan.....	1991-Q3	2790.	1560.	78.8	2790.	0.0
Alberta.....	1991-Q3	8340.	5590.	49.2	8230.	1.3
Canada.....	1991-Q3	81190.	52230.	55.4	79130.	2.6
NUMBER OF BANKRUPTCIES						
Manitoba.....	91-Dec	37.	39.	-5.1	35.	5.7
Saskatchewan.....	91-Dec	30.	44.	-31.8	39.	-23.1
Alberta.....	91-Dec	95.	100.	-5.0	87.	9.2
Canada.....	91-Dec	973.	1162.	-16.3	1005.	-3.2
FOREIGN EXCHANGE RATES (cdn.dollars)						
U.S.A. CLOSING SPOT RATE (DOLLAR) IN CDN.DOLLARS.....	92-Jan	1.17460000	1.15550000	1.65296408	1.16290000	1.00610543

DEFINITIONS

LABOUR FORCE: that portion of the civilian non - institutional population 15 years and over who, during the reference week, were employed or unemployed.

EMPLOYED: persons who, during the reference week, did any work at all or had a job but were not at work due to : (1) own illness or disability (2) personal or family responsibilities (3) bad weather (4) labour dispute (5) vacation (6) other reason not specified above (excluding persons on layoff and persons whose job attachment was to a job to start at a definite date in the future).

UNEMPLOYED: persons who, during the reference week, were without work and were available for work, had been on layoff, or had a new job to start in four weeks or less from the reference week.

UNEMPLOYMENT RATE: represents the number of unemployed persons expressed as a percent of the labour force.

PARTICIPATION RATE: represents the labour force expressed as a percentage of the population 15 years of age and over.

EMPLOYMENT/POPULATION RATIO: represents the number of persons employed expressed as a percentage of the population 15 years of age and over.

SA (SEASONALLY ADJUSTED): a seasonally adjusted series is one from which seasonal movement have been eliminated. Seasonal movements are defined as those which are caused by regular annual events such as climate, crop cycles, holidays and vacation period. It should be noted that the seasonally-adjusted series contains irregular as well as longer term cyclical fluctuations.

March 1992

New Releases & Upcoming Events

SUN	MON	TUE	WED	THU	FRI	SAT
1	2 Building Permits released	3	4 Help-Wanted Index release	5	6 Labour Force released	7
8	9	10 Survey Methods & Questionnaire Design, WPG	11 Survey Methods & Questionnaire Design, WPG Entreprise Seminar (Small Business), Edson	12 Survey Methods & Questionnaire Design, WPG	13	14
15	16	17	18 Entreprise Seminar (Small Business), Canmore	19	20 Consumer Price Index released	21
22	23 Retail Trade released	24	25 Entreprise Seminar (Small Business), Brooks	26	27	28
29	30 Employment, Earnings & Hours released	31				

February

S	M	T	W	T	F	S
						1
2	3	4	5	6	7	8
9	10	11	12	13	14	15
16	17	18	19	20	21	22
23	24	25	26	27	28	29

April

S	M	T	W	T	F	S
			1	2	3	4
5	6	7	8	9	10	11
12	13	14	15	16	17	18
19	20	21	22	23	24	25
26	27	28	29	30		

STATISTICS CANADA
BIBLIOTHEQUE STATISTIQUE CANADA



1010384351

C. 2

2000

DATE DUE

