



The Daily

Statistics Canada

Friday, February 9, 2001

For release at 8:30 a.m.

MAJOR RELEASES

- **Labour Force Survey, January 2001** 2
Employment was virtually unchanged in January. The unemployment rate edged up 0.1 percentage points to 6.9%.
-

OTHER RELEASES

- Non-residential building construction price indexes, fourth quarter 2000 7
 - Digital road test file 7
-

NEW PRODUCTS

REGIONAL REFERENCE CENTRES

RELEASE DATES: February 12 to 16



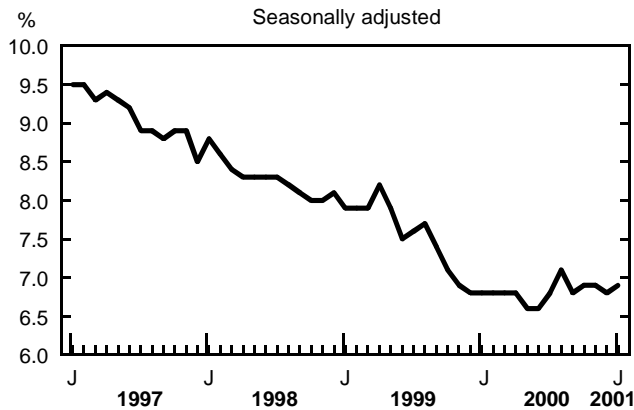
MAJOR RELEASES

Labour Force Survey

January 2001

Employment was virtually unchanged in January, following strong growth over the previous five months. In January, the unemployment rate edged up 0.1 percentage points to 6.9%.

Unemployment rate



Overall employment changed little

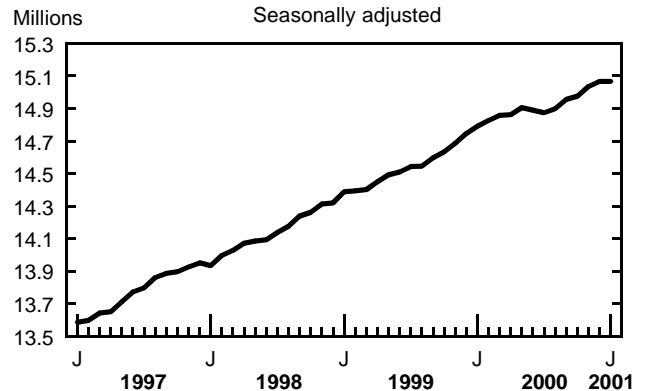
While overall employment was little changed in January, an increase in part-time employment (+20,000) was offset by a similar decline in full-time work.

Employment was essentially unchanged for adult women (those 25 and over), as an increase in part-time employment (+28,000) was offset by a similar decline in full-time work. Employment was also unchanged among adult men and youths (15 to 24).

Though it was little changed in January, youth employment grew strongly in the last five months of 2000 (+70,000 or +3.1%); gains were concentrated in part-time jobs. In January, a slight decline in youth labour force participation (-10,000) pushed their unemployment rate down to 12.1% (-0.4 percentage points).

Although overall employment was essentially unchanged among adult men and women in January, employment among women increased throughout 2000, ending the year up 154,000 (+2.7%), more than twice the increase for adult men (+75,000 or +1.1%). The gains for both men and women over this period were in full-time work.

Employment



Employers continued to hire while self-employment declined

In January, the number of private sector employees increased by an estimated 37,000, while the number of self-employed fell by 48,000. The number of public sector employees grew slightly (+13,000). This continues the trend of strength in paid employment and weakness in self-employment seen throughout 2000. Over the last 12 months, paid employment grew by 492,000 jobs (+4.0%), while the number of self-employed declined 216,000 (-8.5%).

Employment trends by industry

Manufacturing employment was little changed (-9,000) in January, following gains in the preceding three months.

Trade, the largest employer along with manufacturing, gained 21,000 jobs in January. While employment in all industries rose 1.9% over the last 12 months, trade more than doubled that pace with an increase of 4.9%.

January's increase of 21,000 in health care and social assistance brought the gains over December and January to 35,000, returning employment in this industry to near the peak attained in May 2000.

In January, employment in management, administrative and other support services fell 28,000. Losses over December and January totalled 39,000; this followed gains over most of 2000.

Employment was little changed in information, culture and recreation or in professional, scientific and

technical services in January. However, both industries led employment growth over the last 12 months.

Employment in natural resources increased 5,000 in January, partly offsetting the decline in December. Employment in this industry has remained at around the current level since May 2000, after a gain in the previous eight months.

There was little change in the other industries.

Provincial summary

Building on the performance of the last four years, employment in Ontario rose an estimated 16,000 in January, all full-time jobs. The unemployment rate edged down 0.3 points to 5.7%.

Employment in Saskatchewan increased 4,000 in January, partly offsetting the decline in December. Despite this increase, employment in the province is 5,000 below the level of January 2000. An increase in labour force participation (+6,000) in January pushed up unemployment 0.3 percentage points to 5.6%.

In New Brunswick, a gain of 3,000 jobs in January was matched by a similar increase in labour force participation, keeping the unemployment rate unchanged at 10.0%. Employment is up 10,000 since June 2000, when the pace of growth increased.

Employment in Quebec was little changed in January and the labour force grew 29,000. This brought the unemployment rate up by 0.6 points to 8.6%. Employment grew 29,000 from November to January.

In British Columbia, employment fell sharply by 30,000; the loss was mainly concentrated in services

(-26,000). About two-thirds of the overall employment decline was in self-employment. After a drop last July, employment increased for five consecutive months (+44,000) before the January decline. The unemployment rate edged up 0.3 points to 7.4%, as the labour force also contracted by 26,000 in January.

In Nova Scotia, employment fell 9,000, offsetting four consecutive monthly increases. Employment in the province is now at the same level as in August, 2000. In January, employment in the goods-producing sector fell 4,000; most of the losses were in construction. The service-producing sector was down 6,000; most of the losses were in trade (-3,000). The unemployment rate increased 0.9 percentage points to 9.8%.

Employment was little changed in the other provinces in January.

Available on CANSIM: matrices 3450-3471, 3483-3492, 3503 and table 00799999.

Available at 7 am on Statistics Canada's Web site (www.statcan.ca) on the *Daily news* page.

A more detailed summary, *Labour force information (71-001-PIB, \$8/\$78; 71-001-PPB, \$11/\$103) for the week ending January 20, 2001*, is now available. see *How to order products*.

The next release of the Labour Force Survey will be on March 9.

For more information, or to enquire about the concepts, methods or data quality of this release, contact Vincent Ferrao (613-951-4750) or Jacques Ouellet (613-951-4168), Labour Statistics Division. □

Labour force characteristics for both sexes, aged 15 and over

	December 2000	January 2001	December 2000 to January 2001 seasonally adjusted	December 2000	January 2001	December 2000 to January 2001
Labour force						
	'000		% change	%		change
Canada	16,170.4	16,180.6	0.1	66.2	66.1	-0.1
Newfoundland	248.6	246.8	-0.7	56.5	56.1	-0.4
Prince Edward Island	74.0	73.7	-0.4	67.2	66.9	-0.3
Nova Scotia	467.4	461.4	-1.3	62.3	61.5	-0.8
New Brunswick	375.7	379.1	0.9	62.1	62.7	0.6
Quebec	3,753.3	3,782.4	0.8	63.0	63.4	0.4
Ontario	6,342.8	6,337.6	-0.1	67.8	67.6	-0.2
Manitoba	584.8	585.5	0.1	68.0	68.0	0.0
Saskatchewan	506.1	512.2	1.2	66.3	67.1	0.8
Alberta	1,695.0	1,704.9	0.6	72.5	72.8	0.3
British Columbia	2,122.8	2,097.1	-1.2	65.2	64.4	-0.8
Employment						
	'000		% change	%		change
Canada	15,066.7	15,067.4	0.0	61.7	61.6	-0.1
Newfoundland	204.7	206.6	0.9	46.5	46.9	0.4
Prince Edward Island	65.3	65.1	-0.3	59.3	59.1	-0.2
Nova Scotia	425.6	416.4	-2.2	56.7	55.5	-1.2
New Brunswick	338.3	341.2	0.9	55.9	56.4	0.5
Quebec	3,451.4	3,457.3	0.2	57.9	58.0	0.1
Ontario	5,960.4	5,976.4	0.3	63.7	63.8	0.1
Manitoba	556.3	558.6	0.4	64.6	64.9	0.3
Saskatchewan	479.2	483.4	0.9	62.8	63.4	0.6
Alberta	1,613.0	1,619.9	0.4	69.0	69.1	0.1
British Columbia	1,972.5	1,942.5	-1.5	60.6	59.6	-1.0
Unemployment						
	'000		% change	%		change
Canada	1,103.7	1,113.2	0.9	6.8	6.9	0.1
Newfoundland	43.9	40.2	-8.4	17.7	16.3	-1.4
Prince Edward Island	8.7	8.6	-1.1	11.8	11.7	-0.1
Nova Scotia	41.8	45.0	7.7	8.9	9.8	0.9
New Brunswick	37.4	37.8	1.1	10.0	10.0	0.0
Quebec	301.9	325.1	7.7	8.0	8.6	0.6
Ontario	382.3	361.1	-5.5	6.0	5.7	-0.3
Manitoba	28.5	26.9	-5.6	4.9	4.6	-0.3
Saskatchewan	26.9	28.8	7.1	5.3	5.6	0.3
Alberta	82.0	85.0	3.7	4.8	5.0	0.2
British Columbia	150.2	154.7	3.0	7.1	7.4	0.3

Labour force characteristics for both sexes, aged 15 and over

	January 2000	January 2001	January 2000 to January 2001 unadjusted	January 2000	January 2001	January 2000 to January 2001
Labour force						
	'000		% change	%		change
Canada	15,537.7	15,868.1	2.1	64.4	64.9	0.5
Newfoundland	230.5	231.3	0.3	52.4	52.6	0.2
Prince Edward Island	70.0	70.3	0.4	64.3	63.9	-0.4
Nova Scotia	449.3	449.5	0.0	60.3	59.9	-0.4
New Brunswick	348.0	362.7	4.2	57.8	60.0	2.2
Quebec	3,647.3	3,705.0	1.6	61.6	62.1	0.5
Ontario	6,030.0	6,227.3	3.3	65.6	66.4	0.8
Manitoba	569.9	574.5	0.8	66.6	66.7	0.1
Saskatchewan	502.1	500.8	-0.3	65.8	65.6	-0.2
Alberta	1,634.6	1,682.1	2.9	71.3	71.8	0.5
British Columbia	2,055.9	2,064.5	0.4	63.9	63.4	-0.5
Employment						
	'000		% change	%		change
Canada	14,399.2	14,680.1	2.0	59.7	60.0	0.3
Newfoundland	188.5	190.9	1.3	42.9	43.4	0.5
Prince Edward Island	58.4	59.1	1.2	53.7	53.7	0.0
Nova Scotia	402.8	400.8	-0.5	54.1	53.4	-0.7
New Brunswick	310.8	320.9	3.2	51.6	53.1	1.5
Quebec	3,317.9	3,349.8	1.0	56.1	56.2	0.1
Ontario	5,668.3	5,851.5	3.2	61.6	62.4	0.8
Manitoba	537.1	545.1	1.5	62.8	63.3	0.5
Saskatchewan	474.2	470.0	-0.9	62.1	61.6	-0.5
Alberta	1,544.8	1,591.2	3.0	67.4	67.9	0.5
British Columbia	1,896.5	1,900.6	0.2	58.9	58.3	-0.6
Unemployment						
	'000		% change	%		change
Canada	1,138.5	1,188.0	4.3	7.3	7.5	0.2
Newfoundland	41.9	40.4	-3.6	18.2	17.5	-0.7
Prince Edward Island	11.6	11.1	-4.3	16.6	15.8	-0.8
Nova Scotia	46.6	48.7	4.5	10.4	10.8	0.4
New Brunswick	37.3	41.8	12.1	10.7	11.5	0.8
Quebec	329.5	355.2	7.8	9.0	9.6	0.6
Ontario	361.7	375.8	3.9	6.0	6.0	0.0
Manitoba	32.9	29.4	-10.6	5.8	5.1	-0.7
Saskatchewan	27.9	30.9	10.8	5.6	6.2	0.6
Alberta	89.8	91.0	1.3	5.5	5.4	-0.1
British Columbia	159.4	163.9	2.8	7.8	7.9	0.1

Employment by industry (based on NAICS) and class of worker for both sexes, aged 15 and over

	December 2000	January 2001	December 2000 to January 2001	January 2000 to January 2001	December 2000 to January 2001	January 2000 to January 2001
	seasonally adjusted					
	'000				% change	
All industries	15,066.7	15,067.4	0.7	275.6	0.0	1.9
Goods-producing sector	3,891.8	3,891.9	0.1	2.7	0.0	0.1
Agriculture	347.5	345.7	-1.8	-55.4	-0.5	-13.8
Forestry, fishing, mining, oil and gas	277.7	282.9	5.2	7.4	1.9	2.7
Utilities	117.7	122.4	4.7	6.4	4.0	5.5
Construction	820.6	821.6	1.0	6.6	0.1	0.8
Manufacturing	2,328.4	2,319.3	-9.1	37.6	-0.4	1.6
Services-producing sector	11,174.9	11,175.6	0.7	273.0	0.0	2.5
Trade	2,354.4	2,375.0	20.6	111.9	0.9	4.9
Transportation and warehousing	787.8	788.1	0.3	11.5	0.0	1.5
Finance, insurance, real estate and leasing	881.9	869.6	-12.3	10.0	-1.4	1.2
Professional, scientific and technical services	988.6	994.1	5.5	67.0	0.6	7.2
Management, administrative and other support	559.2	530.8	-28.4	18.3	-5.1	3.6
Educational services	952.1	959.9	7.8	-38.6	0.8	-3.9
Health care and social assistance	1,523.7	1,544.4	20.7	33.4	1.4	2.2
Information, culture and recreation	700.6	700.0	-0.6	71.6	-0.1	11.4
Accommodation and food services	965.7	968.0	2.3	16.3	0.2	1.7
Other services	698.4	685.8	-12.6	-15.5	-1.8	-2.2
Public administration	762.4	760.0	-2.4	-12.8	-0.3	-1.7
Class of worker						
Public sector employees	2,833.5	2,846.0	12.5	99.7	0.4	3.6
Private sector	12,233.2	12,221.4	-11.8	175.9	-0.1	1.5
Employees	9,869.9	9,906.5	36.6	392.2	0.4	4.1
Self-employed	2,363.3	2,314.9	-48.4	-216.3	-2.0	-8.5

Employment by type of work, age and sex

	January 2001	December 2000 to January 2001	January 2000 to January 2001	January 2001	December 2000 to January 2001	January 2000 to January 2001	January 2001	December 2000 to January 2001	January 2000 to January 2001
	seasonally adjusted								
	Both sexes			Men			Women		
	'000								
Employment	15,067.4	0.7	275.6	8,108.9	-10.0	89.5	6,958.5	10.7	186.1
Full-time	12,339.2	-19.5	221.6	7,275.6	-1.2	67.0	5,063.5	-18.4	154.6
Part-time	2,728.3	20.3	54.1	833.3	-8.8	22.5	1,895.0	29.1	31.6
15-24	2,345.3	0.9	79.5	1,206.9	-10.0	25.2	1,138.4	10.9	54.3
25+	12,722.2	-0.1	196.2	6,902.0	0.0	64.3	5,820.2	-0.1	131.9
25-54	11,164.3	32.7	189.4	5,982.1	28.0	77.8	5,182.1	4.6	111.6
55+	1,557.9	-32.8	6.8	919.9	-28.0	-13.4	638.0	-4.8	20.2

OTHER RELEASES

Non-residential building construction price indexes

Fourth quarter 2000

The composite price index for non-residential building construction (1992=100) stood at 123.5 in the fourth quarter, up 1.2% over the previous quarter and up 7.0% from the fourth quarter of 1999 — the highest year-to-year increase since the second quarter of 1989, when it rose 7.3%.

The index for Toronto rose 1.8% from the third quarter, followed by Ottawa (+1.6%), Calgary (+1.4%), Edmonton (+1.2%), Vancouver (+0.5%), Montréal (+0.3%), and Halifax (+0.2%).

Toronto also had the highest year-over-year change (+10.4%) compared with the fourth quarter of 1999. Ottawa registered an 8.3% annual gain, followed by Calgary (+5.8%), Edmonton (+5.2%), Montréal (+3.9%), Vancouver (+2.6%) and Halifax (+2.5%).

Non-residential building construction price index (1992=100)

	Fourth quarter 2000	Fourth quarter 1999 to fourth quarter 2000 % change	Third to fourth quarter 2000
Composite Index	123.5	7.0	1.2
Halifax	109.5	2.5	0.2
Montréal	118.6	3.9	0.3
Ottawa	123.8	8.3	1.6
Toronto	128.8	10.4	1.8
Calgary	123.0	5.8	1.4
Edmonton	121.6	5.2	1.2
Vancouver	119.3	2.6	0.5

Note: Non-residential building construction price indexes provide an indication of changes in construction costs in seven major urban areas (Halifax, Montréal, Ottawa, Toronto, Calgary, Edmonton and Vancouver). Three construction categories — industrial, commercial and institutional buildings — are represented by selected models (a light factory building, an office building, a warehouse, a shopping centre and a school).

Besides the major urban areas and composite indexes, a further breakdown of the changes in costs is available by trade group — structural, architectural, mechanical and electrical — within the building types. These price indexes are derived from surveys of general and special trade group contractors. They report data on various categories of costs (material, labour, equipment, taxes, overhead and profit) relevant to the detailed construction specifications included in the surveys.

Available on CANSIM: matrices 9930 and 9931.

The fourth quarter 2000 issue of *Construction price statistics* (62-007-XPB, \$24/\$79) will be available in March. See *How to order products*.

For more information, or to enquire about the concepts, methods or data quality of this release, contact Denise Potvin (613 951-3350; fax: 613 951-1539; potvden@statcan.ca), Prices Division. ■

Digital road test file

Statistics Canada invites comments from clients on a test file containing roads and streets for a limited geographic area. This file, in CD-ROM format, is now available for evaluation and information purposes.

Comments from clients will help Statistics Canada's Geography Division to design the digital road file to be released with other products from the 2001 Census.

For more information, or to obtain the CD-ROM, contact your nearest Statistics Canada Regional Reference Centre. ■

NEW PRODUCTS

Infomat — A weekly review, February 9, 2001
Catalogue number 11-002-XIE (\$3/\$109).

Infomat — A weekly review, February 9, 2001
Catalogue number 11-002-XPE (\$4/\$145).

Canada's international transactions in securities,
 November 2000
Catalogue number 67-002-XIB (\$14/\$132).

All prices are in Canadian dollars and exclude sales tax. Additional shipping charges apply for delivery outside Canada.

Catalogue numbers with an -XIB or an -XIE extension are Internet versions; those with -XMB or -XME are microfiche; -XPB or -XPE are paper versions; -XDB are electronic versions on diskette and -XCD are electronic versions on compact disc.

How to order products

Order products by phone:

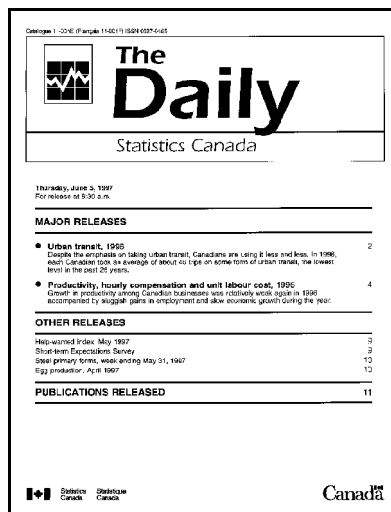
Please refer to the • Title • Catalogue number • Volume number • Issue number • Your VISA or MasterCard number.

In Canada and the United States call:	1-800-267-6677
From other countries call:	1-613-951-7277
To fax your order:	1-877-287-4369
Address changes or account inquiries:	1-800-700-1033

To order a product by mail write: Statistics Canada, Circulation Management, Dissemination Division, Ottawa, K1A 0T6. Include a cheque or money order payable to **Receiver General of Canada/Publications**. Canadian customers add 7% GST and applicable PST.

To order by Internet: write to order@statcan.ca or download an electronic version by accessing Statistics Canada's Web site (www.statcan.ca), under the headings *Products and services*, *Downloadable publications*.

Authorized agents and bookstores also carry Statistics Canada's catalogued publications.



Statistics Canada's official release bulletin

Catalogue 11-001E.

Published each working day by the Communications Division, Statistics Canada, 10-H, R.H. Coats Bldg., Tunney's Pasture, Ottawa, Ontario K1A 0T6.

To access *The Daily* on the Internet, visit our site at <http://www.statcan.ca>. To receive *The Daily* each morning by E-mail, send an E-mail message to listproc@statcan.ca. Leave the subject line blank. In the body of the message, type "subscribe daily firstname lastname".

Editor: Tom Vradenburg (613-951-1103, vradtom@statcan.ca)

Head of Official Release: Madeleine Simard (613-951-1088), simamad@statcan.ca

Published by authority of the Minister responsible for Statistics Canada. © Minister of Industry, 2001. Citation in newspaper, magazine, radio, and television reporting is permitted subject to the requirement that Statistics Canada is acknowledged as the source. Any other reproduction is permitted subject to the requirement that Statistics Canada is acknowledged as the source on all copies as follows: Statistics Canada, *The Daily*, catalogue 11-001E, along with date and page references.

REGIONAL REFERENCE CENTRES

Statistics Canada's Regional Reference Centres offer a full range of the Agency's products and services. Each reference centre is equipped with a library and sales counter where you can consult or purchase publications, diskettes, CD-ROM discs, microfiche, maps and more.

Each centre has facilities to retrieve information from CANSIM, Statistics Canada's data retrieval system. A telephone inquiry service is available with toll-free access for those located outside local calling areas. Many other valuable services—from seminars to consultations—are also offered. For information, contact your nearest Regional Reference Centre.

Newfoundland and Labrador, Nova Scotia, Prince Edward Island and New Brunswick

Advisory Services
Statistics Canada
1741 Brunswick Street
2nd Floor, Box 11
Halifax, Nova Scotia
B3J 3X8
Local calls: (902) 426-5331
Toll free: 1-800-263-1136
Fax: 1-902-426-9538
E-mail: atlantic.info@statcan.ca

Quebec and Nunavut

Advisory Services
Statistics Canada
4th Floor, East Tower
Guy Favreau Complex
200 René Lévesque Blvd. W.
Montréal, Québec
H2Z 1X4
Local calls: (514) 283-5725
Toll free: 1-800-263-1136
Fax: 1-514-283-9350

National Capital Region

Statistical Reference Centre (NCR)
Statistics Canada
Lobby, R.H. Coats Building
Holland Avenue
Tunney's Pasture
Ottawa, Ontario
K1A 0T6
Local calls: (613) 951-8116
Fax: 1-613-951-0581
E-mail: infostats@statcan.ca

Ontario

Advisory Services
Statistics Canada
10th Floor
Arthur Meighen Building
25 St. Clair Avenue East
Toronto, Ontario
M4T 1M4
Local calls: (416) 973-6586
Toll free: 1-800-263-1136
Fax: 1-416-973-7475

Manitoba

Advisory Services
Statistics Canada
Via Rail Building, Suite 200
123 Main Street
Winnipeg, Manitoba
R3C 4V9
Local calls: (204) 983-4020
Toll free: 1-800-263-1136
Fax: 1-204-983-7543
E-mail: statswpg@solutions.net

Saskatchewan

Advisory Services
Statistics Canada
Park Plaza, Suite 440
2365 Albert Street
Regina, Saskatchewan
S4P 4K1
Local calls: (306) 780-5405
Toll free: 1-800-263-1136
Fax: 1-306-780-5403
E-mail: statcan@sk.sympatico.ca

Southern Alberta

Advisory Services
Statistics Canada
Discovery Place, Room 201
3553-31 Street N.W.
Calgary, Alberta
T2L 2K7
Local calls: (403) 292-6717
Toll free: 1-800-263-1136
Fax: 1-403-292-4958
E-mail: degagnej@cadvision.com

Northern Alberta and the Northwest Territories

Advisory Services
Statistics Canada
15th Floor, Park Square
10001 Bellamy Hill
Edmonton, Alberta
T5J 3B6
Local calls: (780) 495-3027
Toll free: 1-800-263-1136
Fax: 1-780-495-5318
E-mail:
Johane.Tremblay@a.statcan.ca

British Columbia and the Yukon

Advisory Services
Statistics Canada
Library Square Tower, Suite 600
300 West Georgia Street
Vancouver, B.C.
V6B 6C7
Local calls: (604) 666-3691
Toll free: 1-800-263-1136
Fax: 1-604-666-4863

National toll-free enquiries line (Canada and the United States): 1-800-263-1136
Toll-free order-only line (Canada and the United States): 1-800-267-6677
Toll-free fax order line (Canada and the United States): 1-877-287-4369
Toll-free telecommunications device for the hearing impaired: 1-800-363-7629

The Daily, February 9, 2001

RELEASE DATES: FEBRUARY 12 TO 16

(Release dates are subject to change.)

Release date	Title	Reference period
12	New Housing Price Index	December 2000
14	Productivity growth	1961 to 1999
15	Consumer Price Index	January 2001
15	New motor vehicle sales	December 2000
15	Livestock estimates	January 2001
16	Travel between Canada and other countries	December 2000
